

# Weather briefing

ACLOUD Longyearbyen, Svalbard

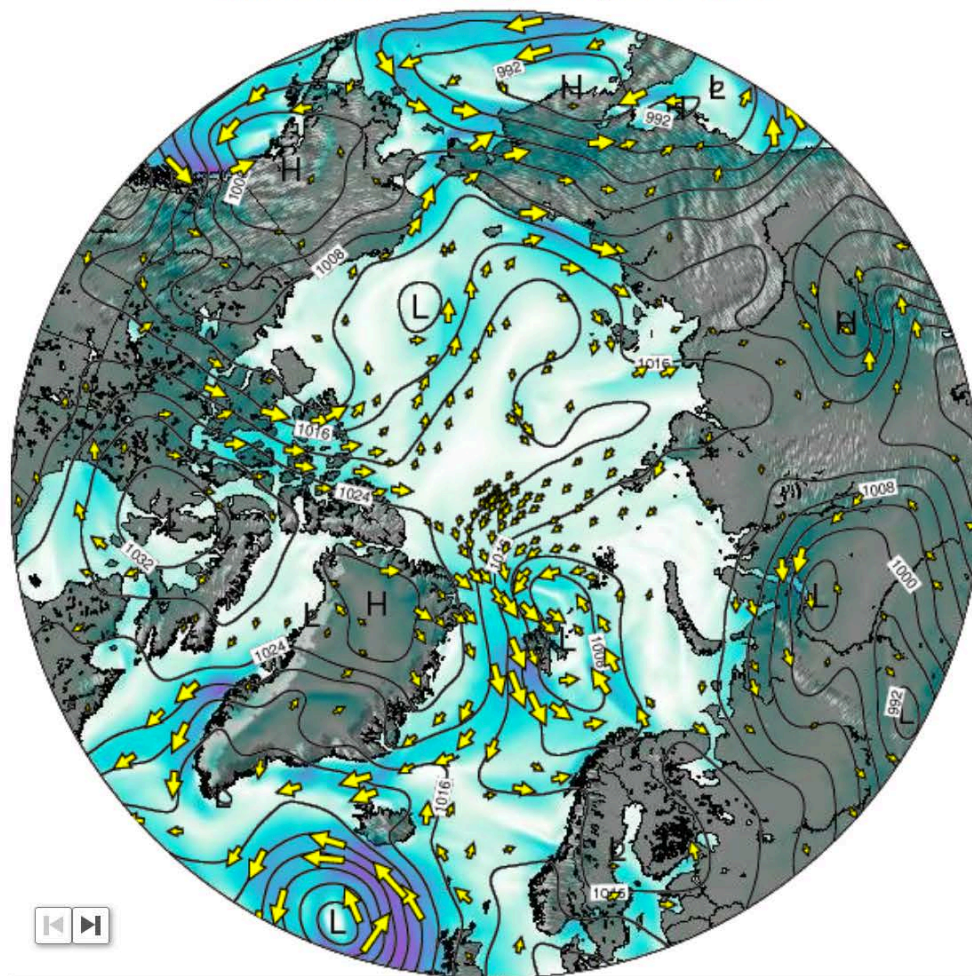
Mon 22 May 2017 – **Tue 23 May** – Thu 25 May 2017

## **Summary**

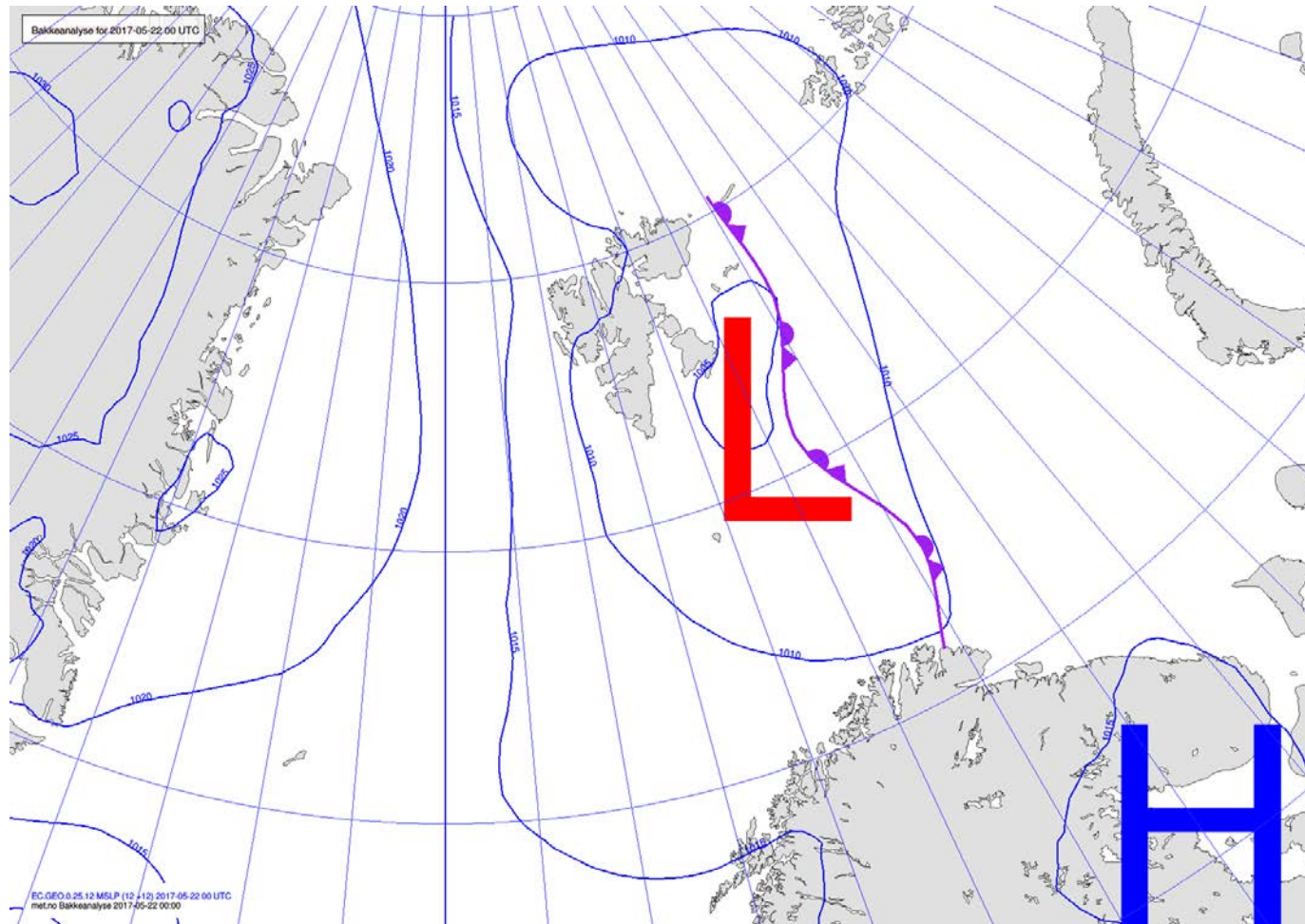
A low pressure system with center east of Spitsbergen is moving eastwards, directing a northwesterly airflow over Svalbard area – Arctic cold-air-outbreak in the Fram Strait.

# General Weather Situation 22 May 2017

Surface Wind on Monday 22 May at 12am UTC

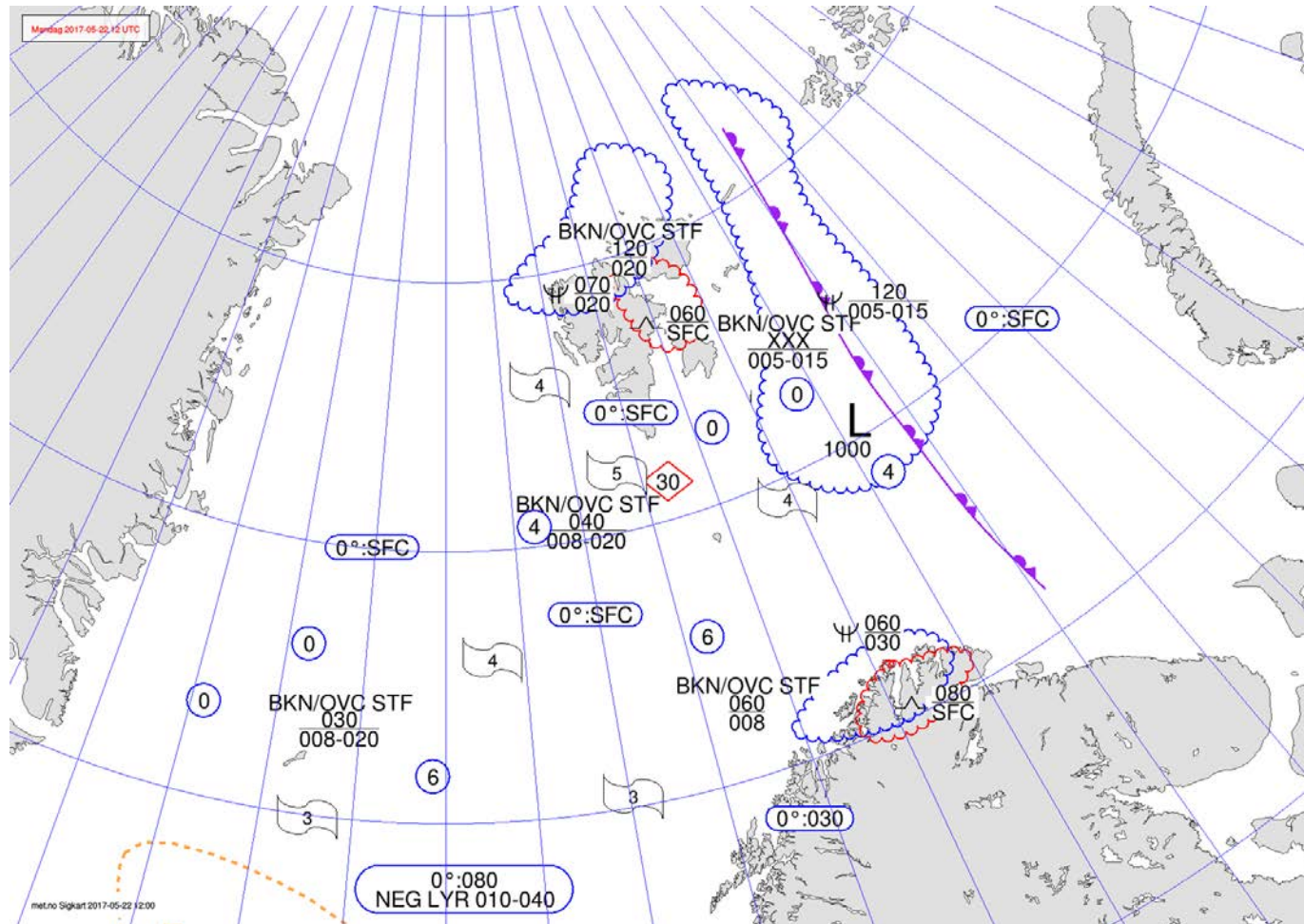


## Analysis 22 May 2017 @ 00 UTC

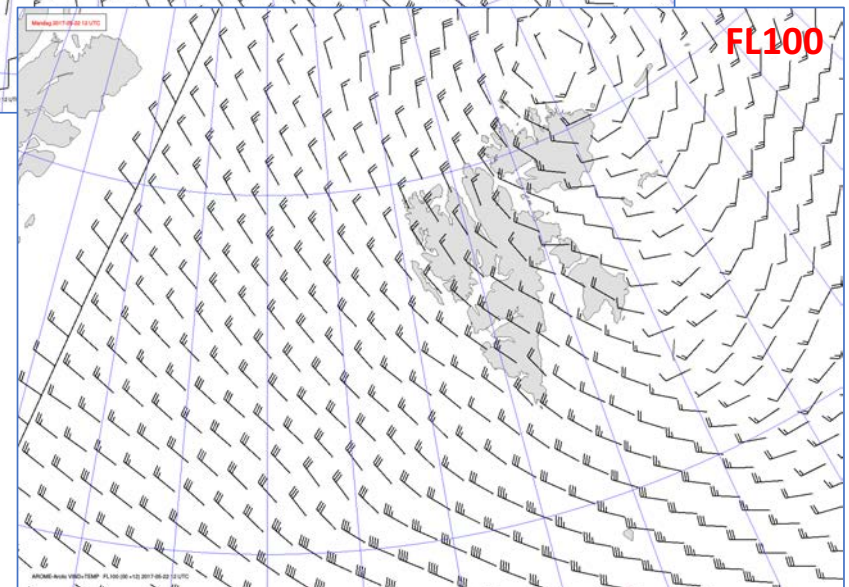
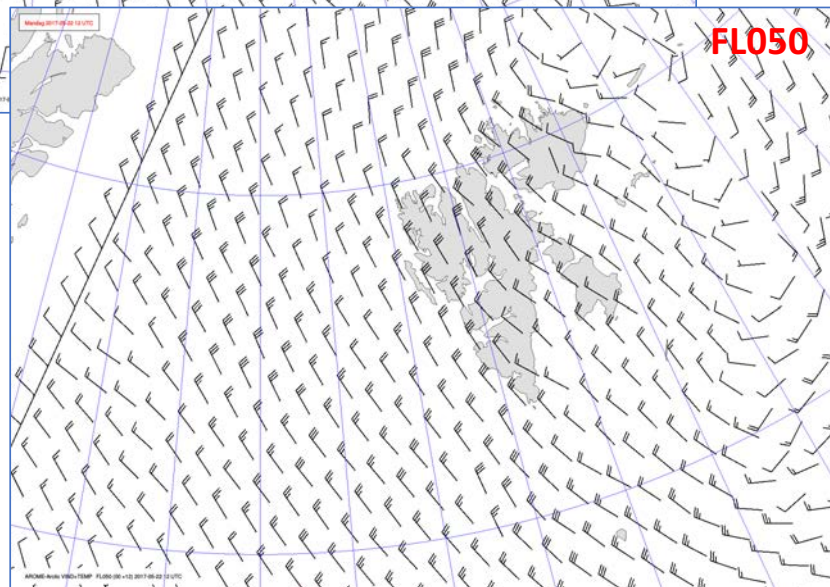
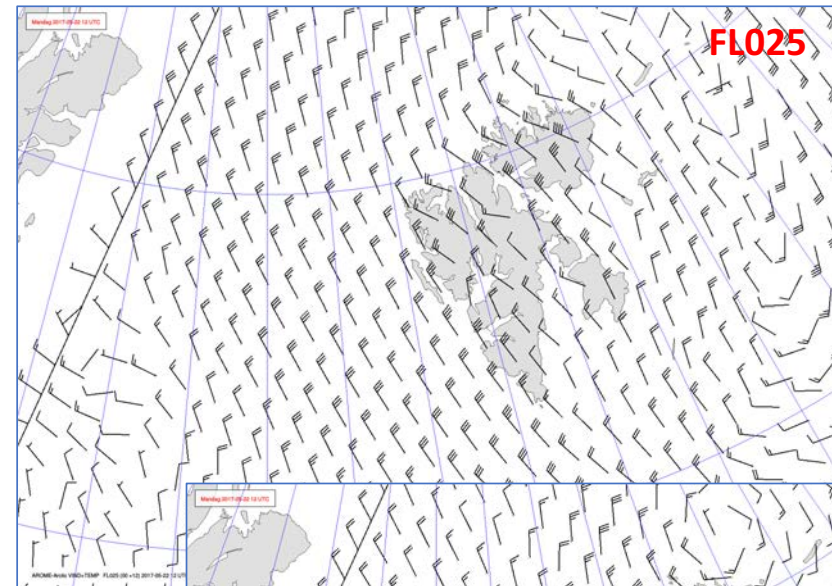
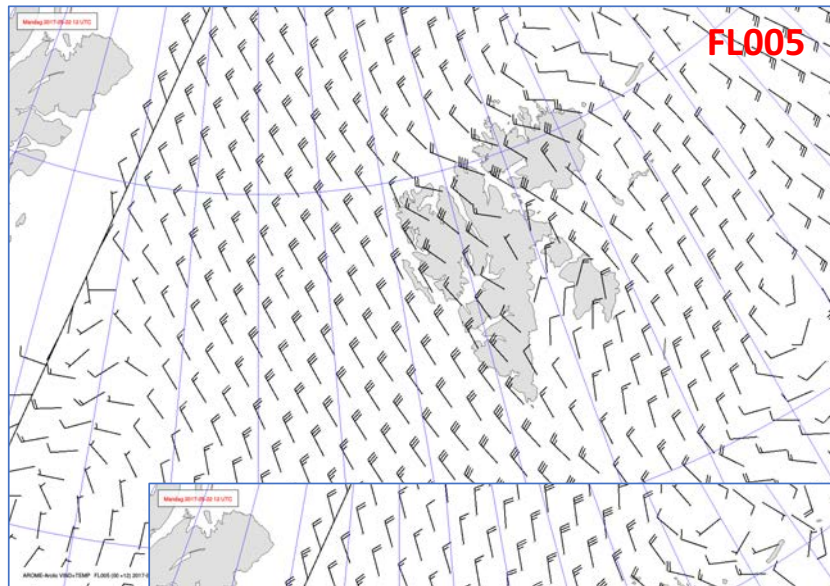




## Sign. synop features 22 May 2017 @ 00 UTC



## Wind 22 May 2017 @ 12 UTC



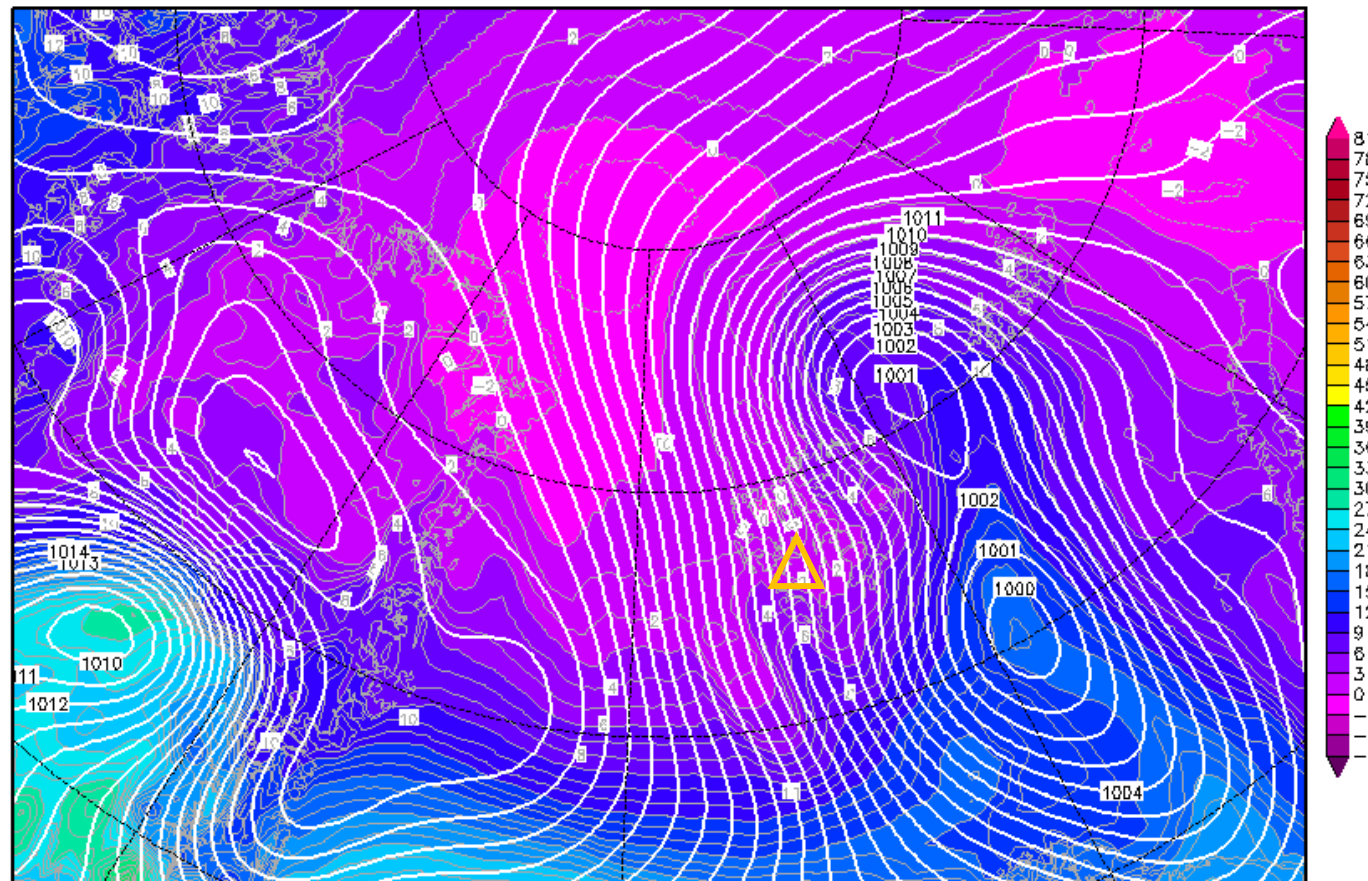


# 850-hPa Theta Equiv. 22 May 2017 @ 12 UTC

Init : Mon,22MAY2017 00Z

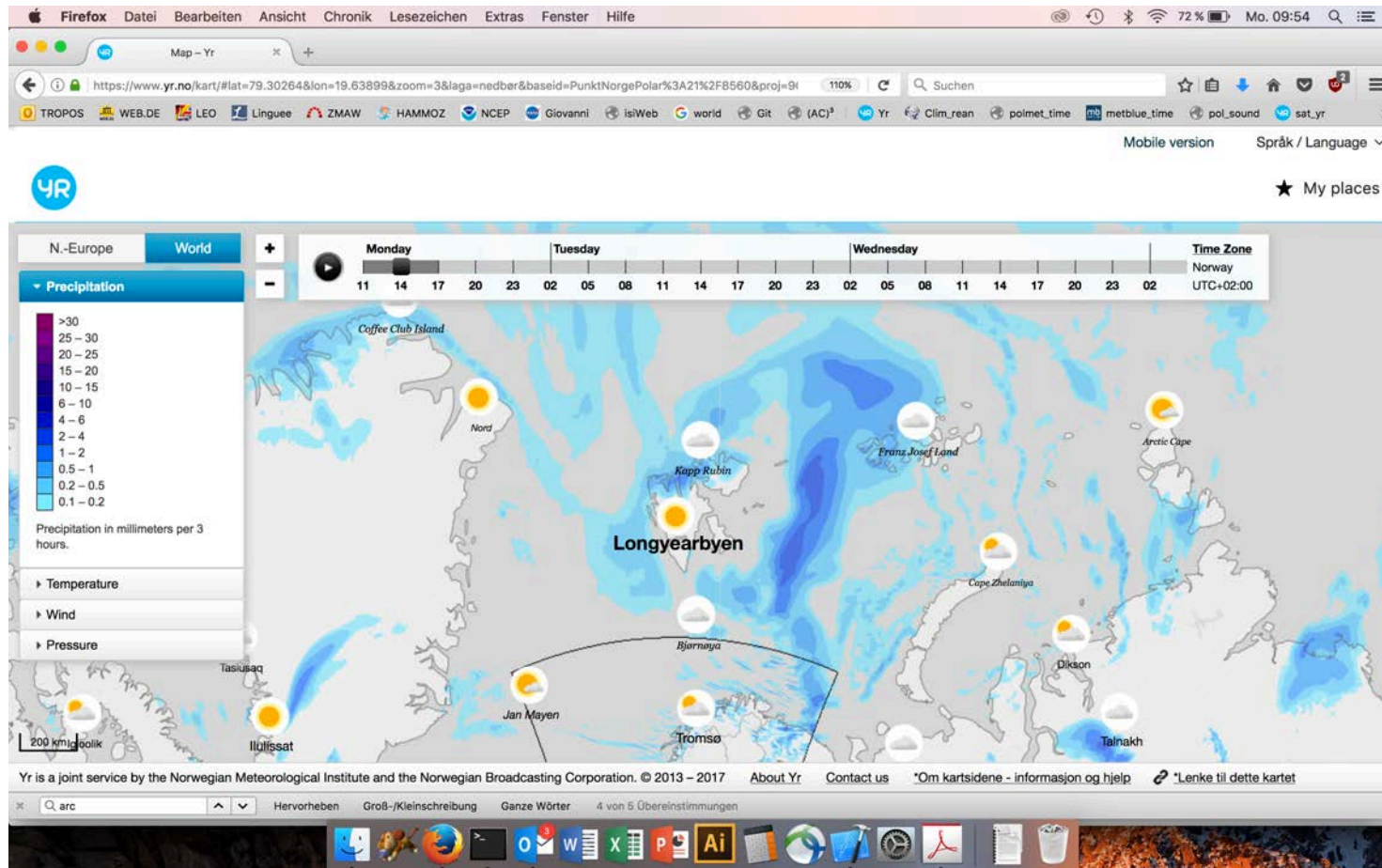
Valid: Mon,22MAY2017 12Z

*Bodendruck (hPa) und 850 hPa Aeq.Pot.T. (Grad C)*



Daten: GFS-Modell des amerikanischen Wetterdienstes  
(C) Wetterzentrale  
[www.wetterzentrale.de](http://www.wetterzentrale.de)

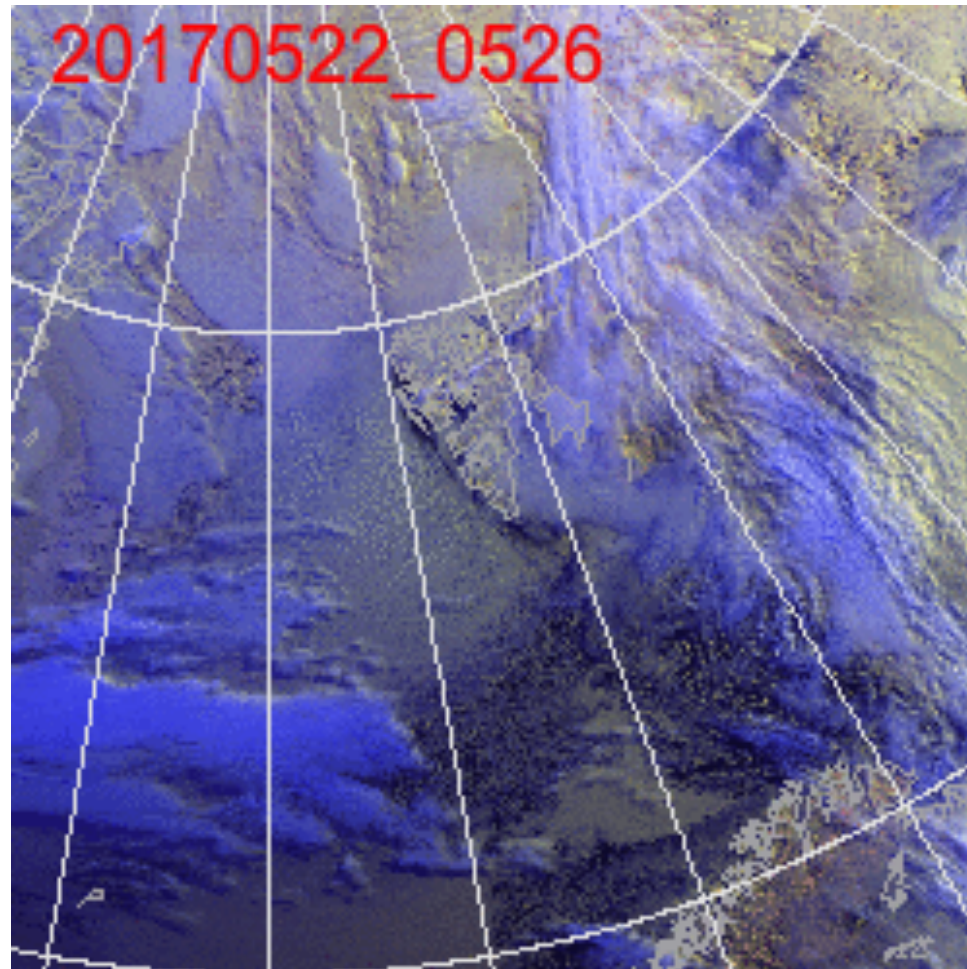
# Precipitation 22 May 2017 12 UTC



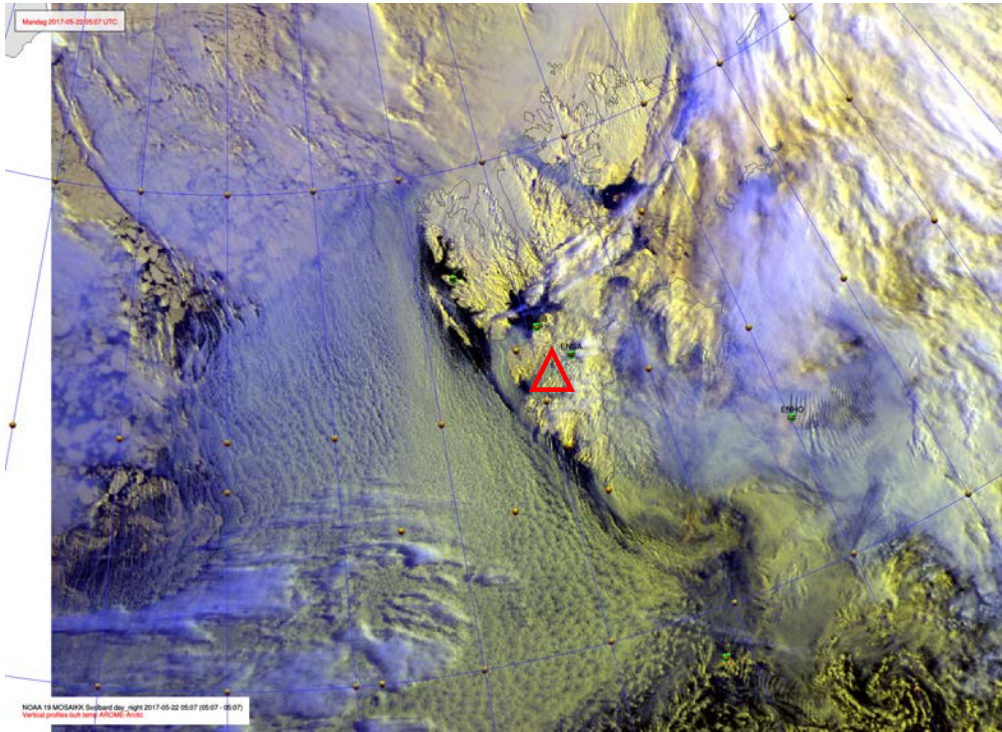
To be replaced by NMI plots during campaign



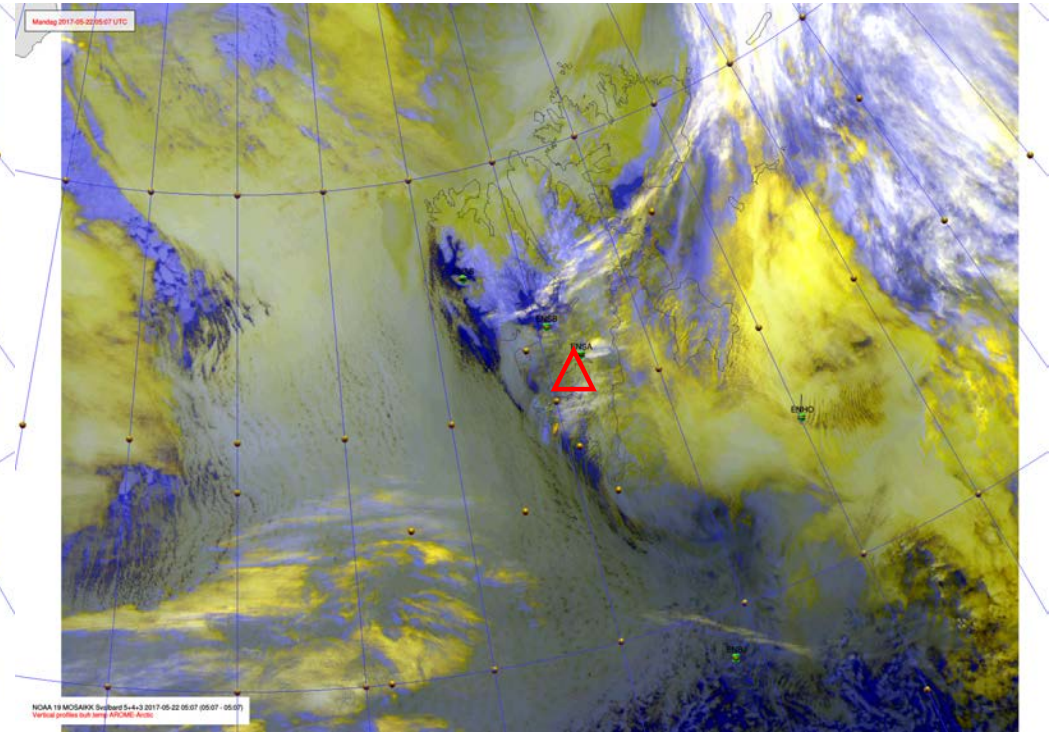
**NOAA 22 May 2017 @ 0300-1200 UTC**



# NOAA-19 22 May 2017 @ 0507 UTC



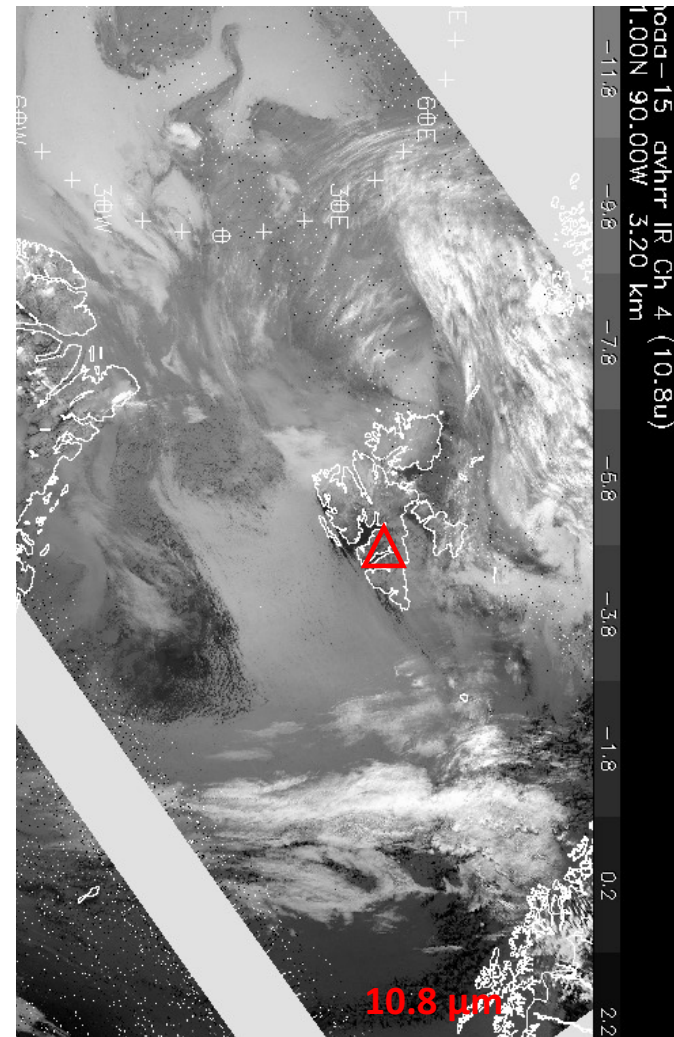
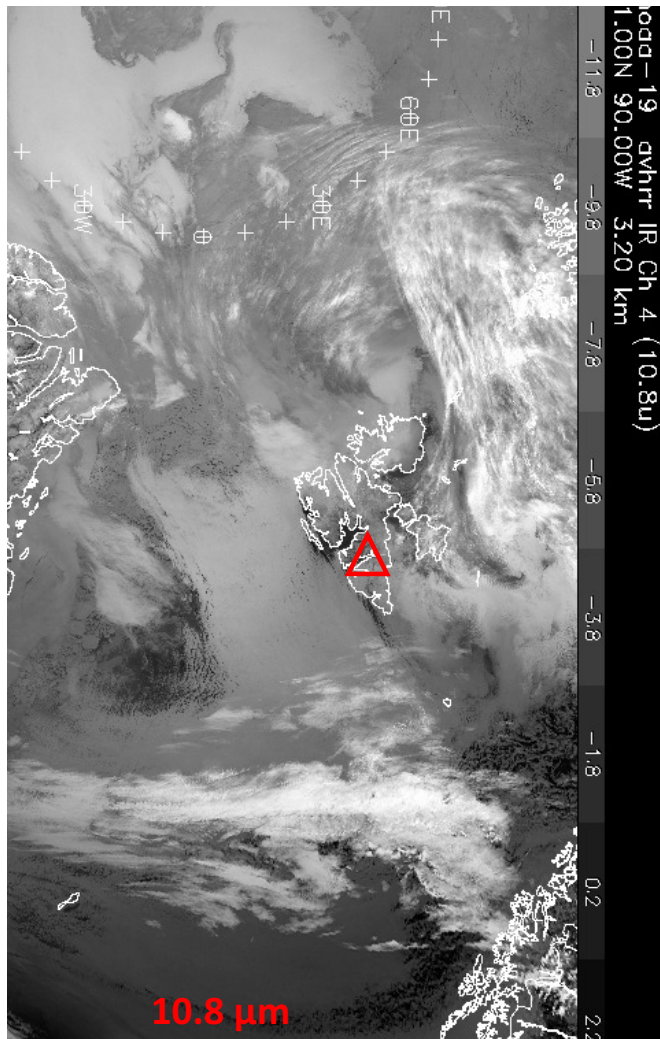
10.8  $\mu\text{m}$



IR, Ch 5+4+3

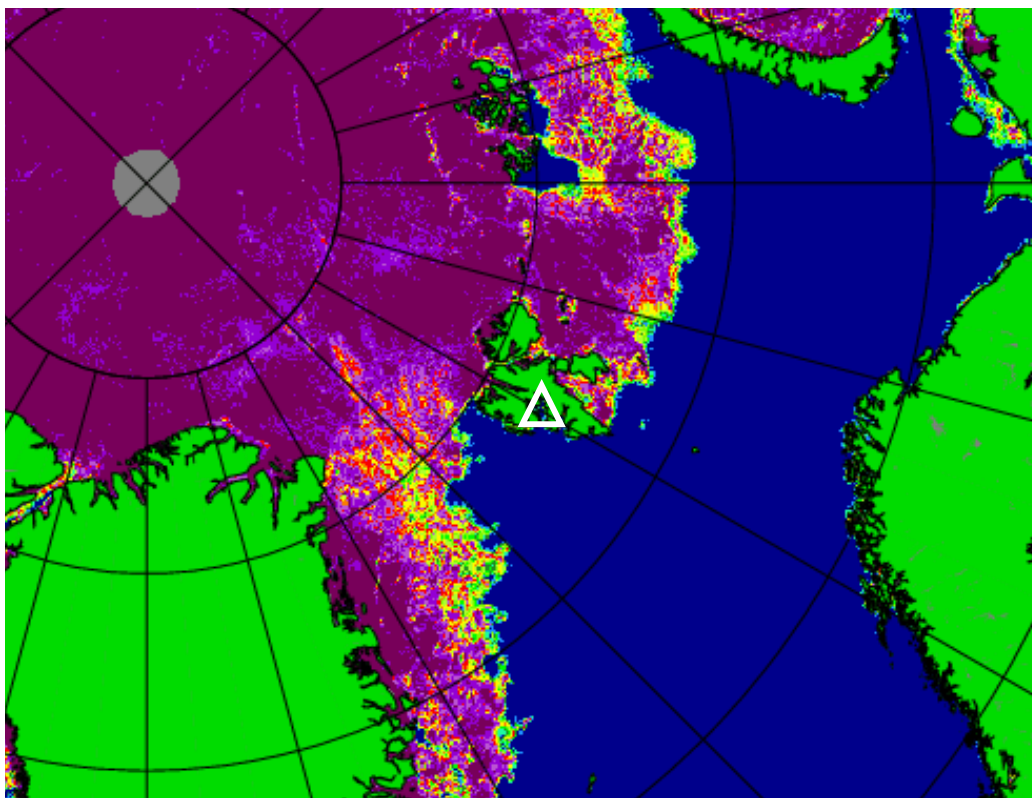


# NOAA-19 22 May 2017 @ 0828 & 0946 UTC

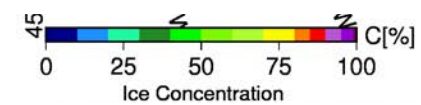




# Arctic sea ice 21 May 2017



May 20 2017 60  
Arctic  
ASI (from AMSR2) ver. 5.3, Grid 6.25 km



# Flight Day

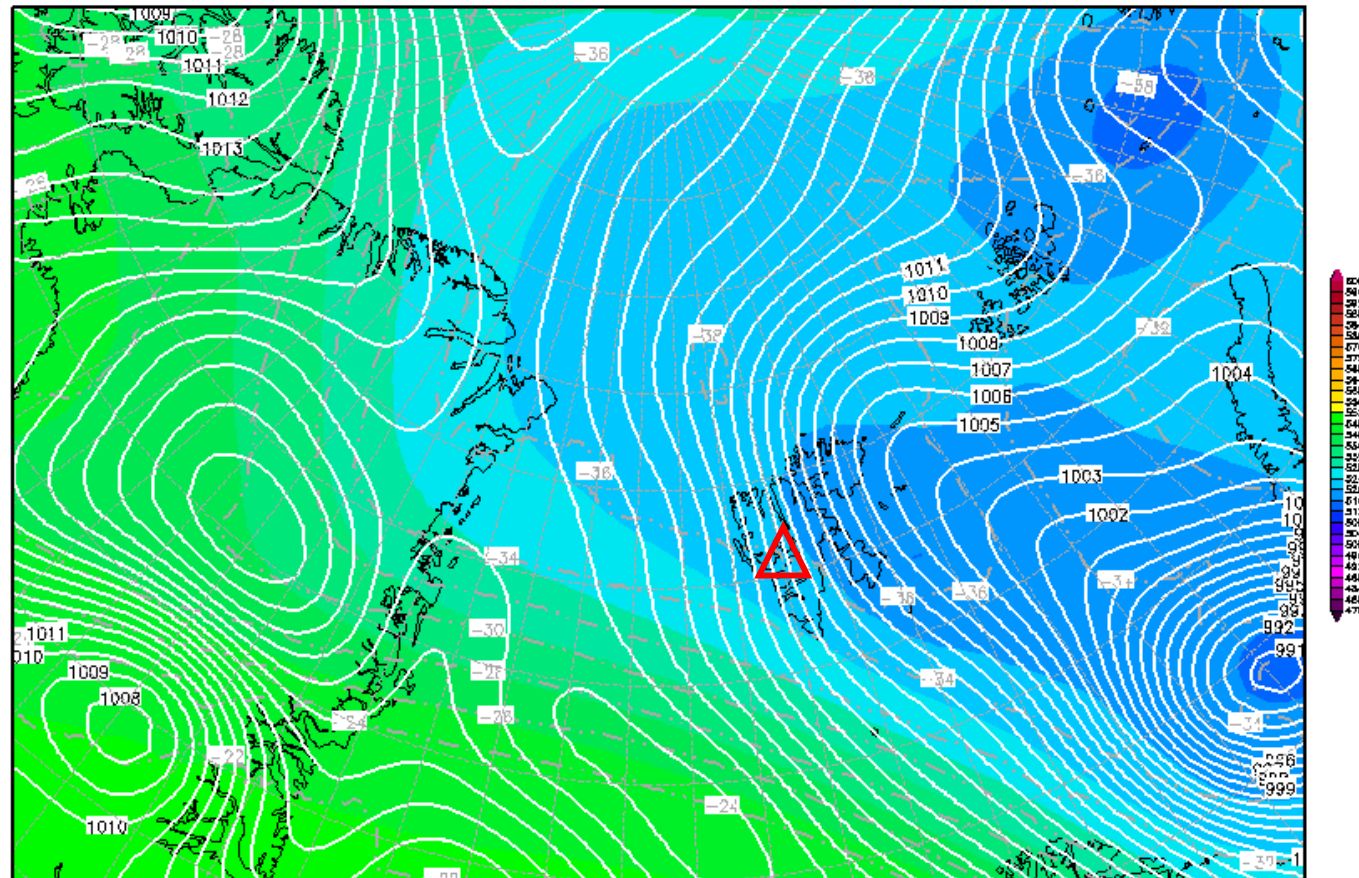
**Tue 23 May 2017**

# 500-hPa Geopotential 23 May 2017 @ 12 UTC

Init : Mon,22MAY2017 00Z

Valid: Tue,23MAY2017 12Z

*500 hPa Geopot.(gpdm), T (C) und Bodendr. (hPa)*



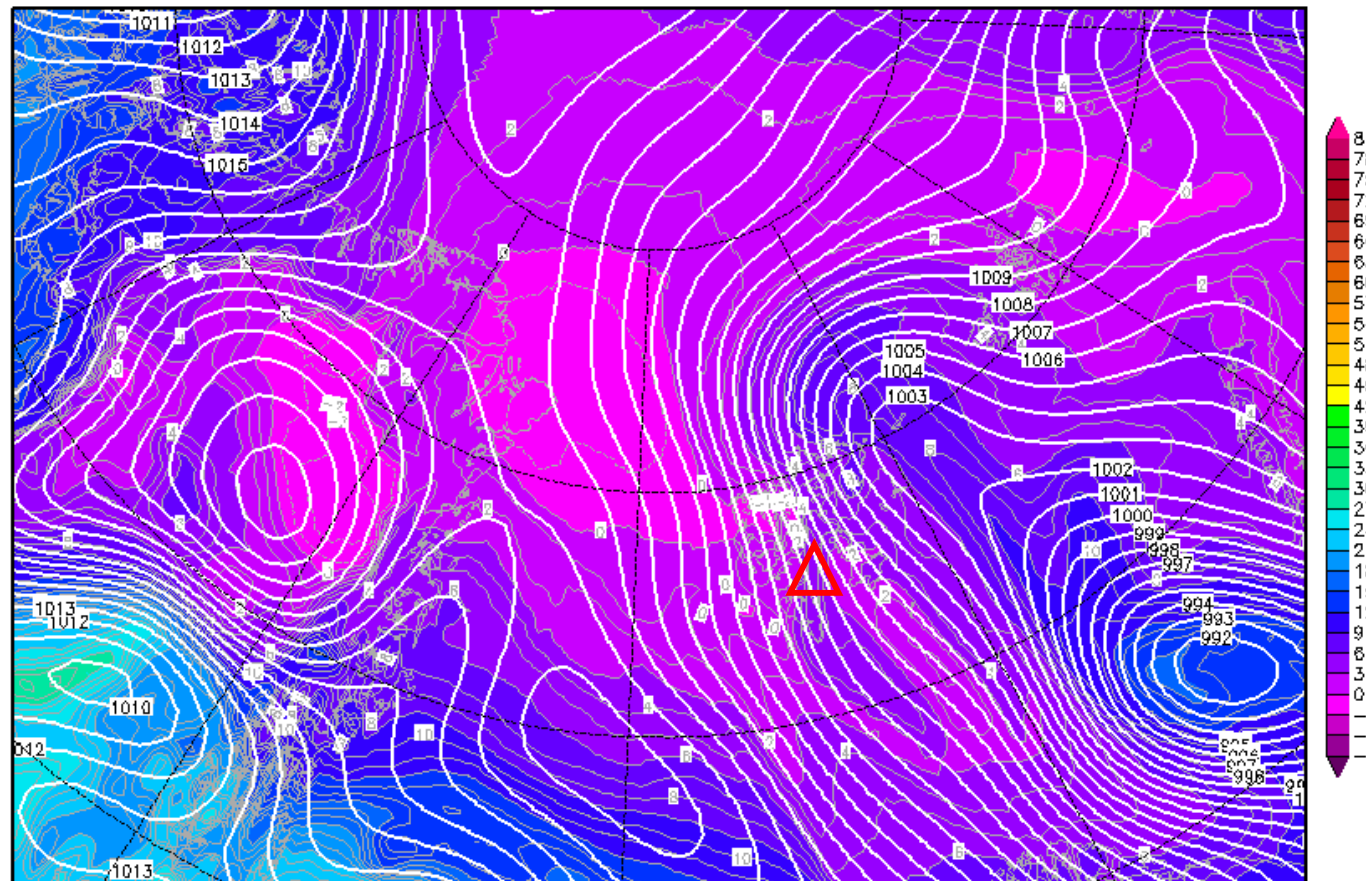


# 850-hPa Theta Equiv. 23 May 2017 @ 06 UTC

Init : Mon,22MAY2017 00Z

Valid: Tue,23MAY2017 06Z

*Bodendruck (hPa) und 850 hPa Aeq.Pot.T. (Grad C)*



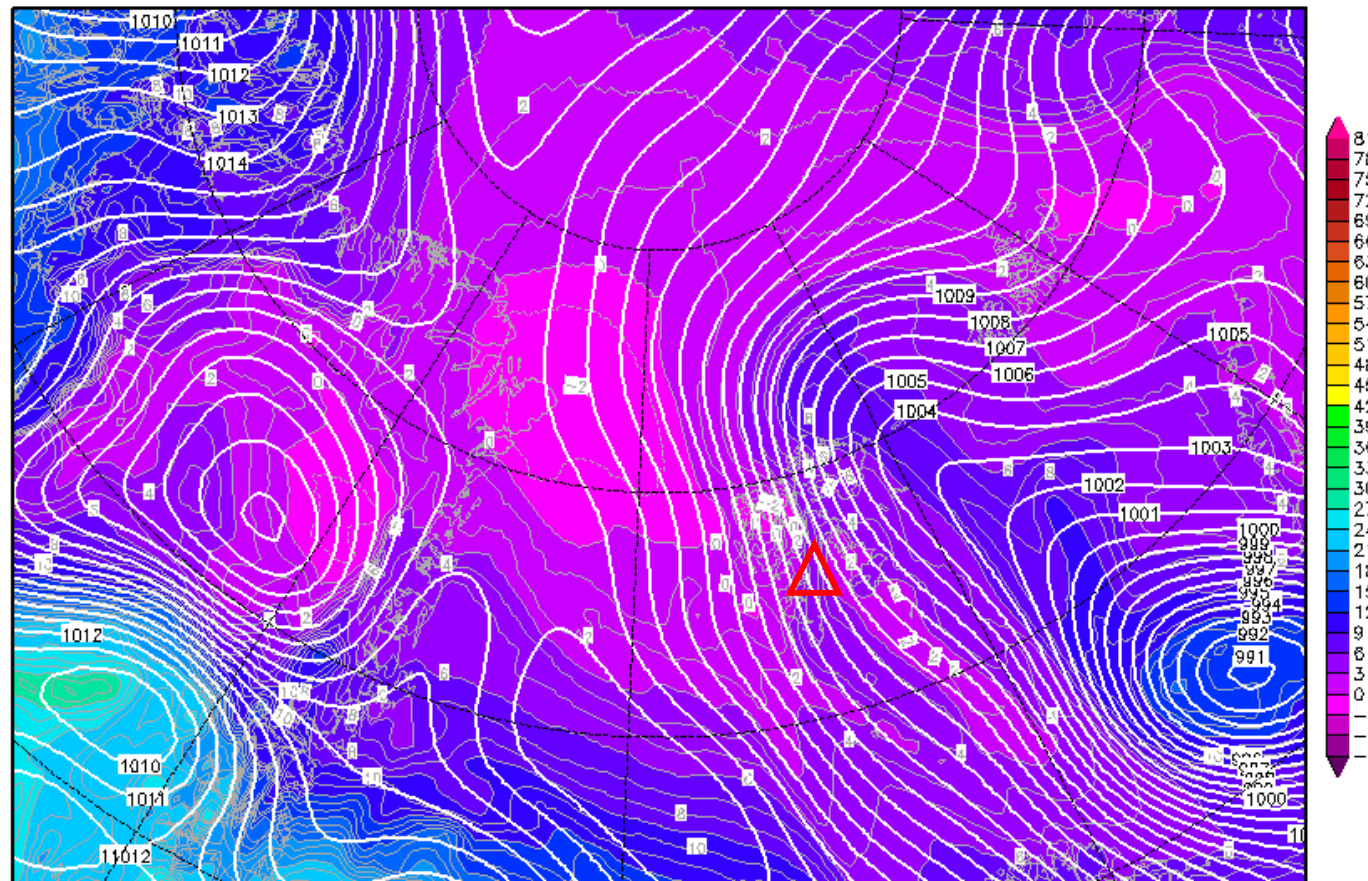
Daten: GFS-Modell des amerikanischen Wetterdienstes  
(C) Wetterzentrale  
[www.wetterzentrale.de](http://www.wetterzentrale.de)

# 850-hPa Theta Equiv. 23 May 2017 @ 09 UTC

Init : Mon,22MAY2017 00Z

Valid: Tue,23MAY2017 09Z

*Bodendruck (hPa) und 850 hPa Aeq.Pot.T. (Grad C)*



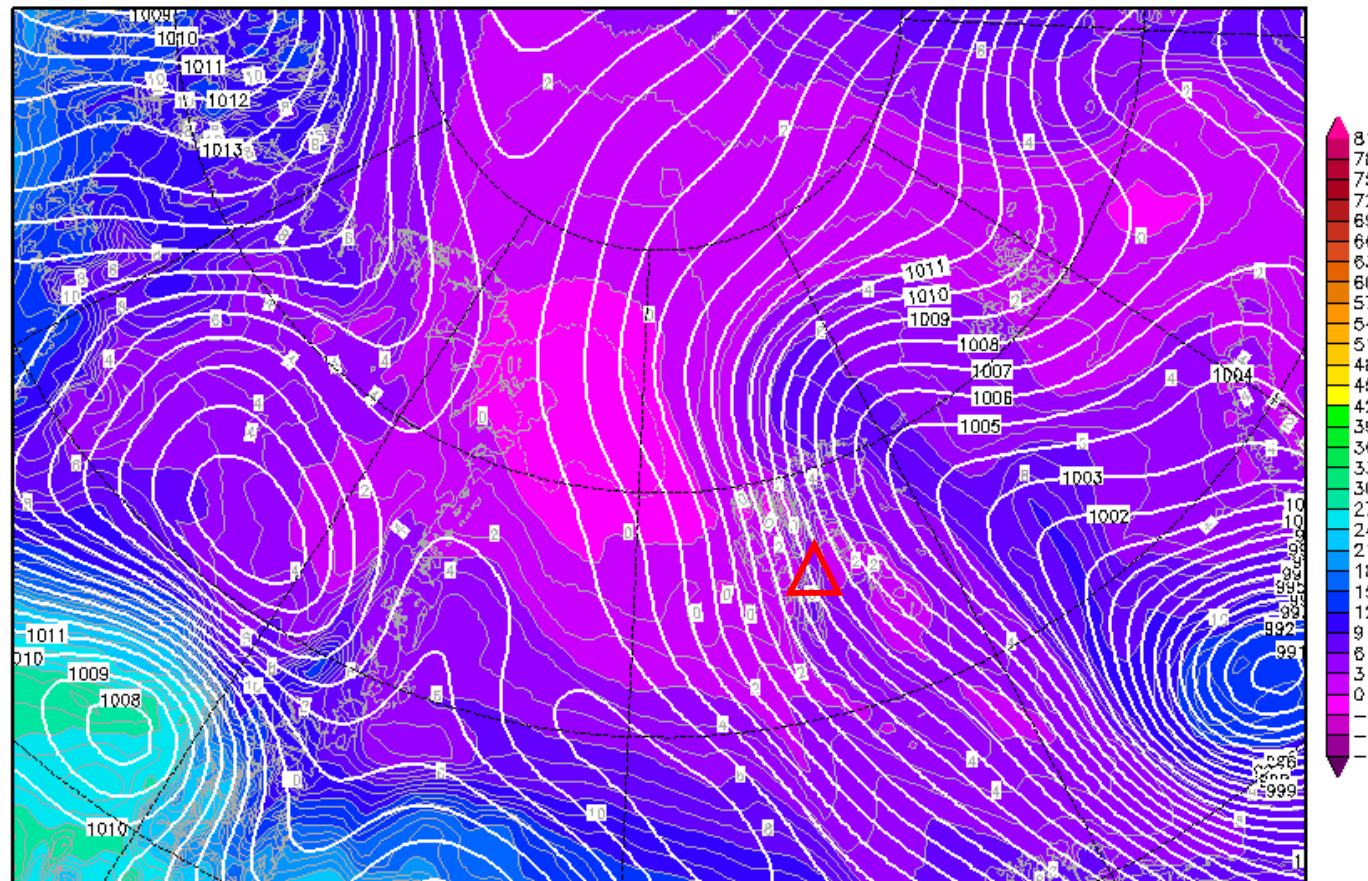
Daten: GFS—Modell des amerikanischen Wetterdienstes  
(C) Wetterzentrale  
[www.wetterzentrale.de](http://www.wetterzentrale.de)

# 850-hPa Theta Equiv. 23 May 2017 @ 12 UTC

Init : Mon,22MAY2017 00Z

Valid: Tue,23MAY2017 12Z

*Bodendruck (hPa) und 850 hPa Aeq.Pot.T. (Grad C)*



Daten: GFS-Modell des amerikanischen Wetterdienstes  
(C) Wetterzentrale  
[www.wetterzentrale.de](http://www.wetterzentrale.de)

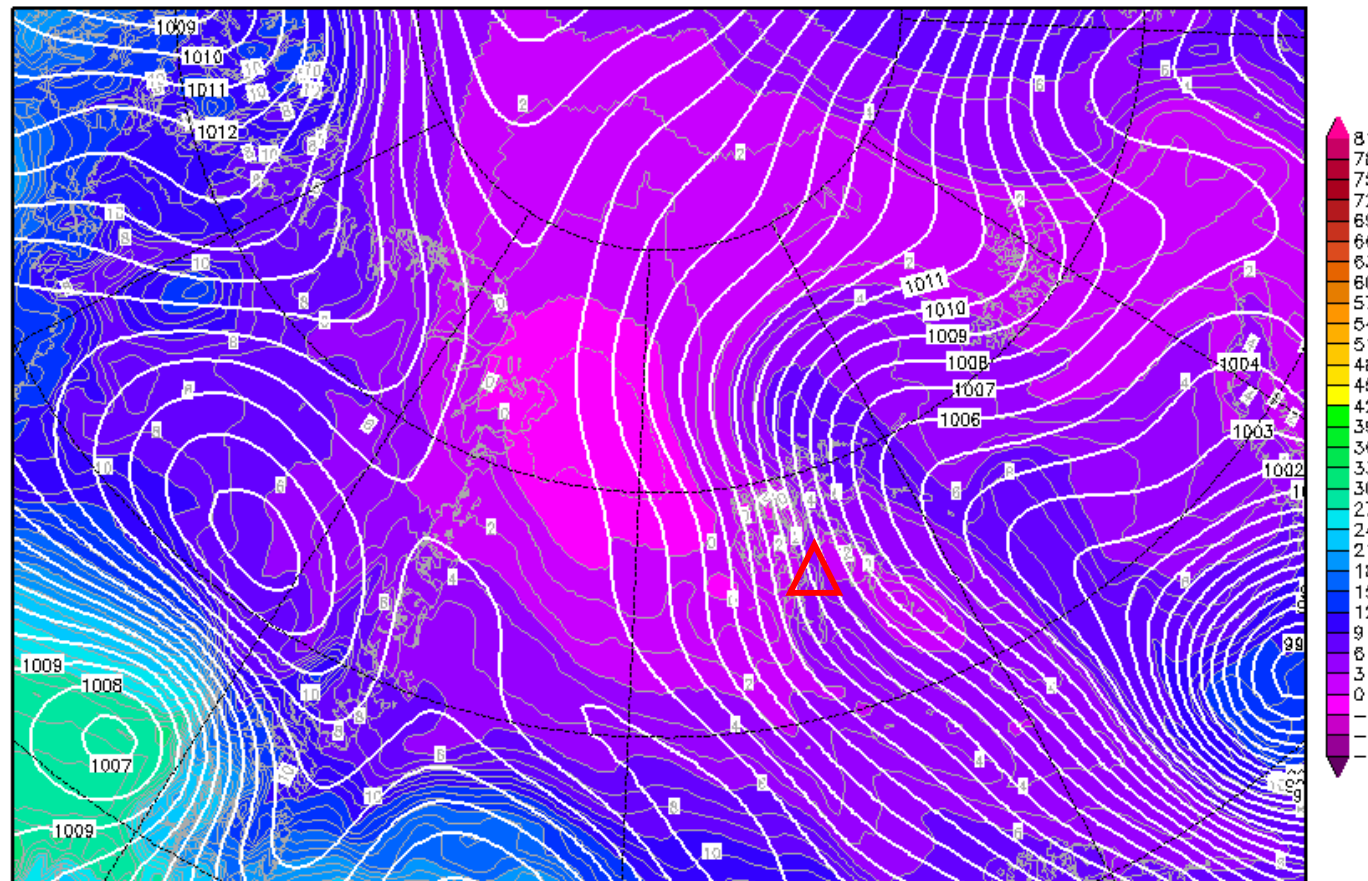


# 850-hPa Theta Equiv. 23 May 2017 @ 15 UTC

Init : Mon,22MAY2017 00Z

Valid: Tue,23MAY2017 15Z

*Bodendruck (hPa) und 850 hPa Aeq.Pot.T. (Grad C)*



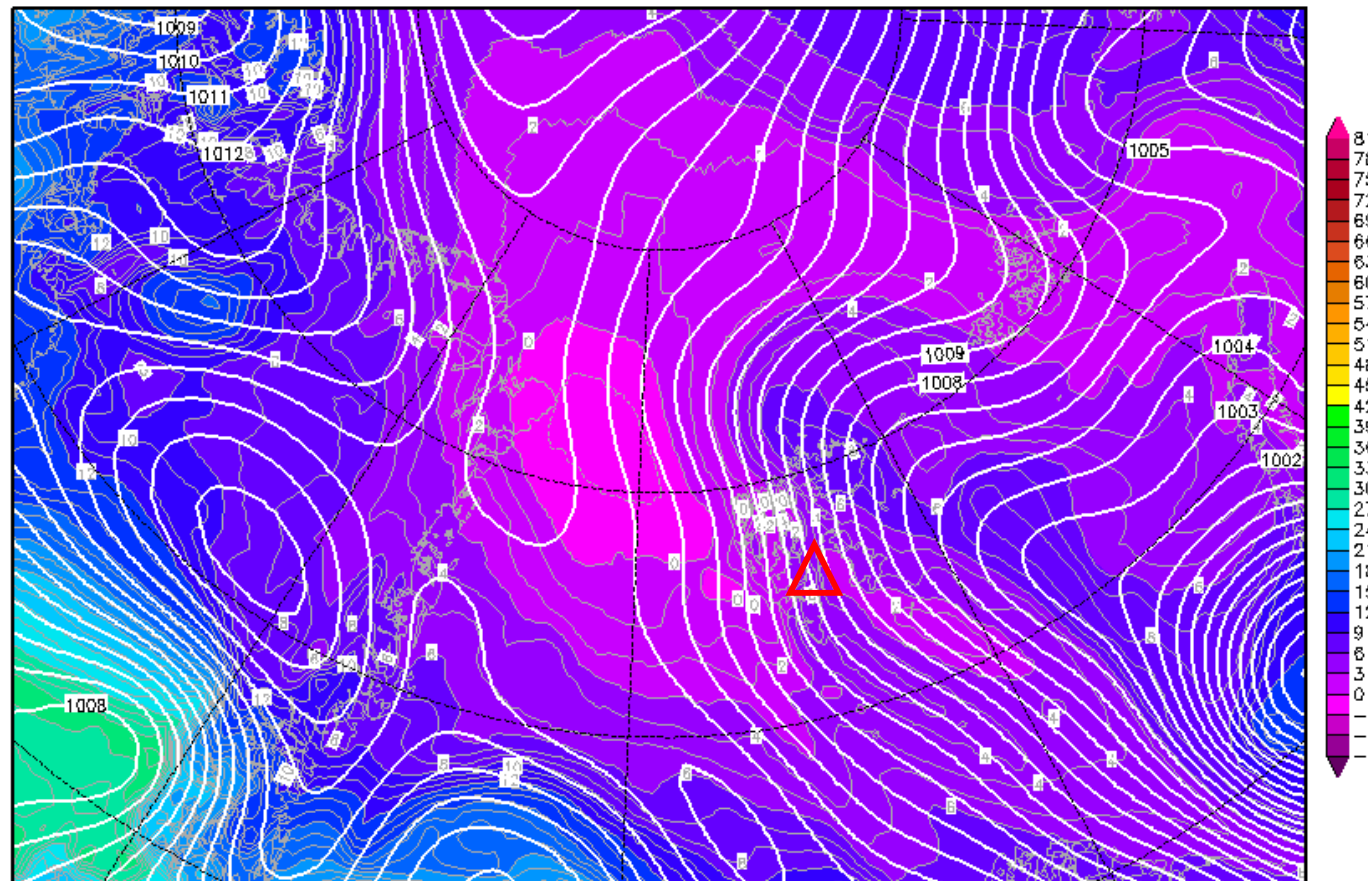
Daten: GFS—Modell des amerikanischen Wetterdienstes  
(C) Wetterzentrale  
[www.wetterzentrale.de](http://www.wetterzentrale.de)

# 850-hPa Theta Equiv. 23 May 2017 @ 18 UTC

Init : Mon,22MAY2017 00Z

Valid: Tue,23MAY2017 18Z

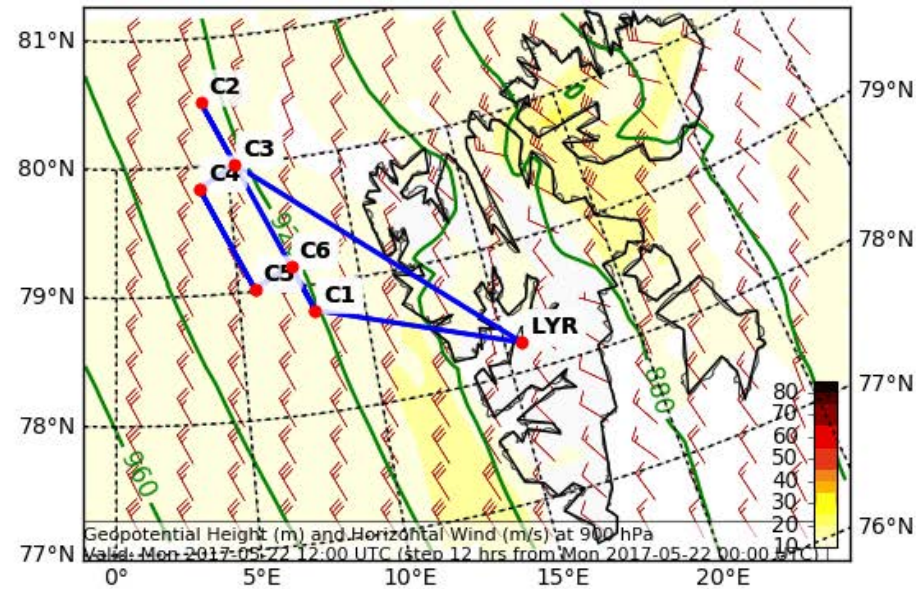
*Bodendruck (hPa) und 850 hPa Aeq.Pot.T. (Grad C)*



Daten: GFS-Modell des amerikanischen Wetterdienstes  
(C) Wetterzentrale  
[www.wetterzentrale.de](http://www.wetterzentrale.de)

# Forecast Tomorrow 12 UTC

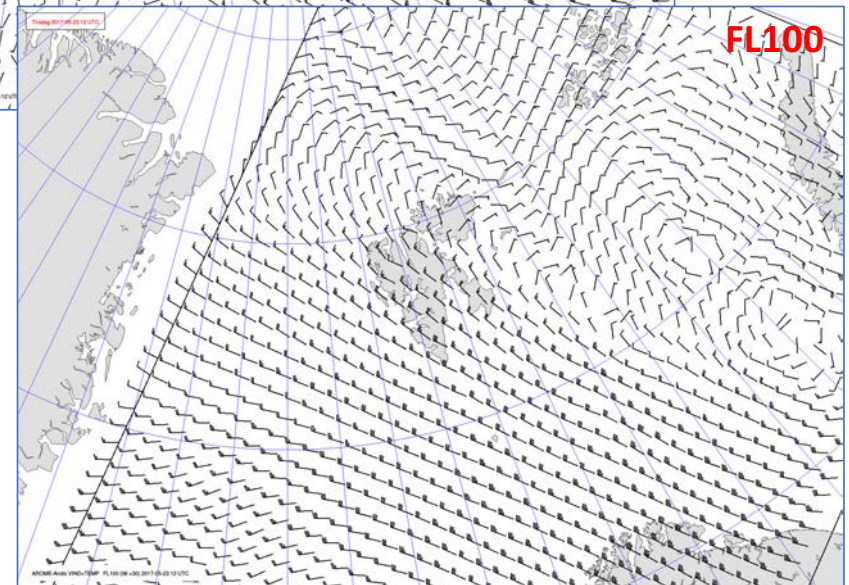
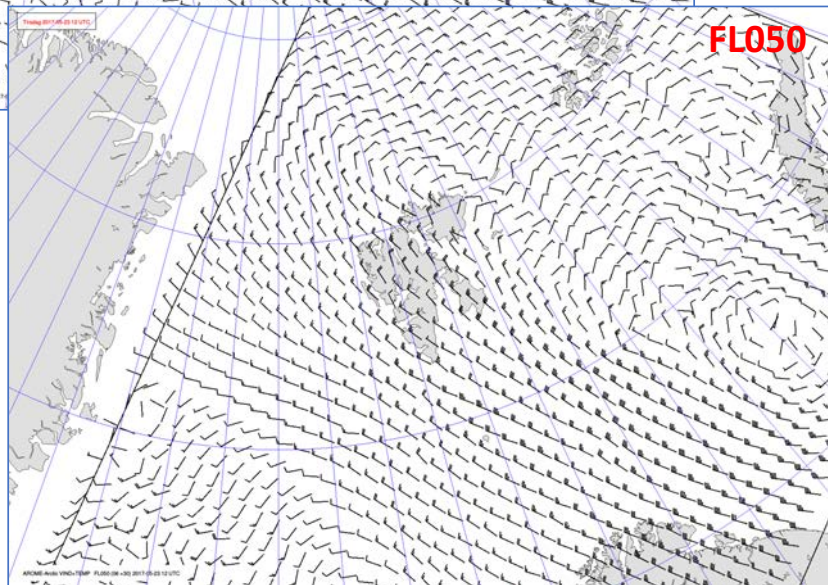
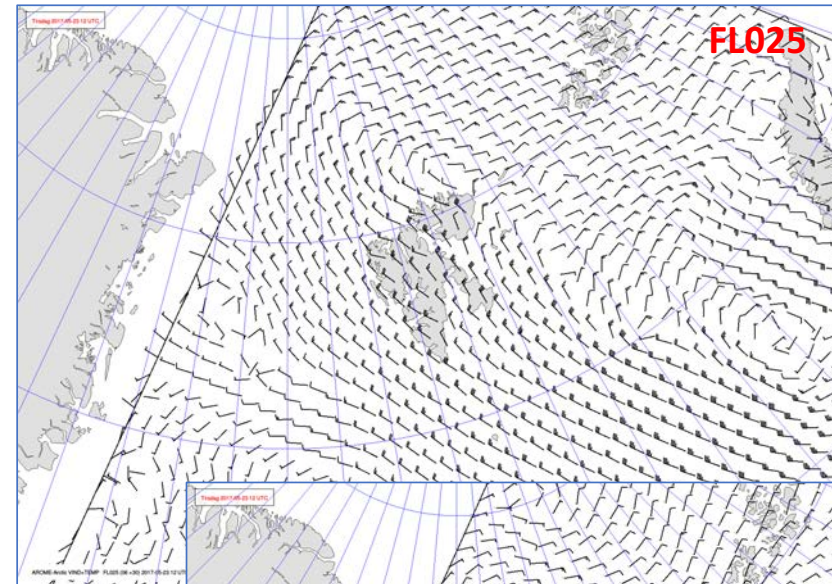
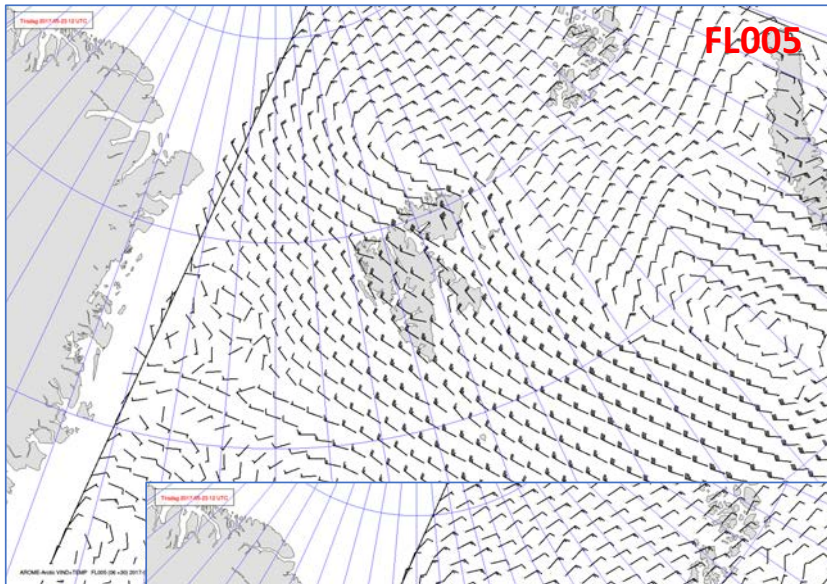
Geopotential Height (m) and Horizontal Wind (m/s) (Wind Speed 10-85 m/s) at 900 (hPa)  
Valid: Mon 2017-05-22 12:00 UTC (step 12 hrs from Mon 2017-05-22 00:00 UTC)



EPSG:77790000



## Wind 22 May 2017 @ 12 UTC

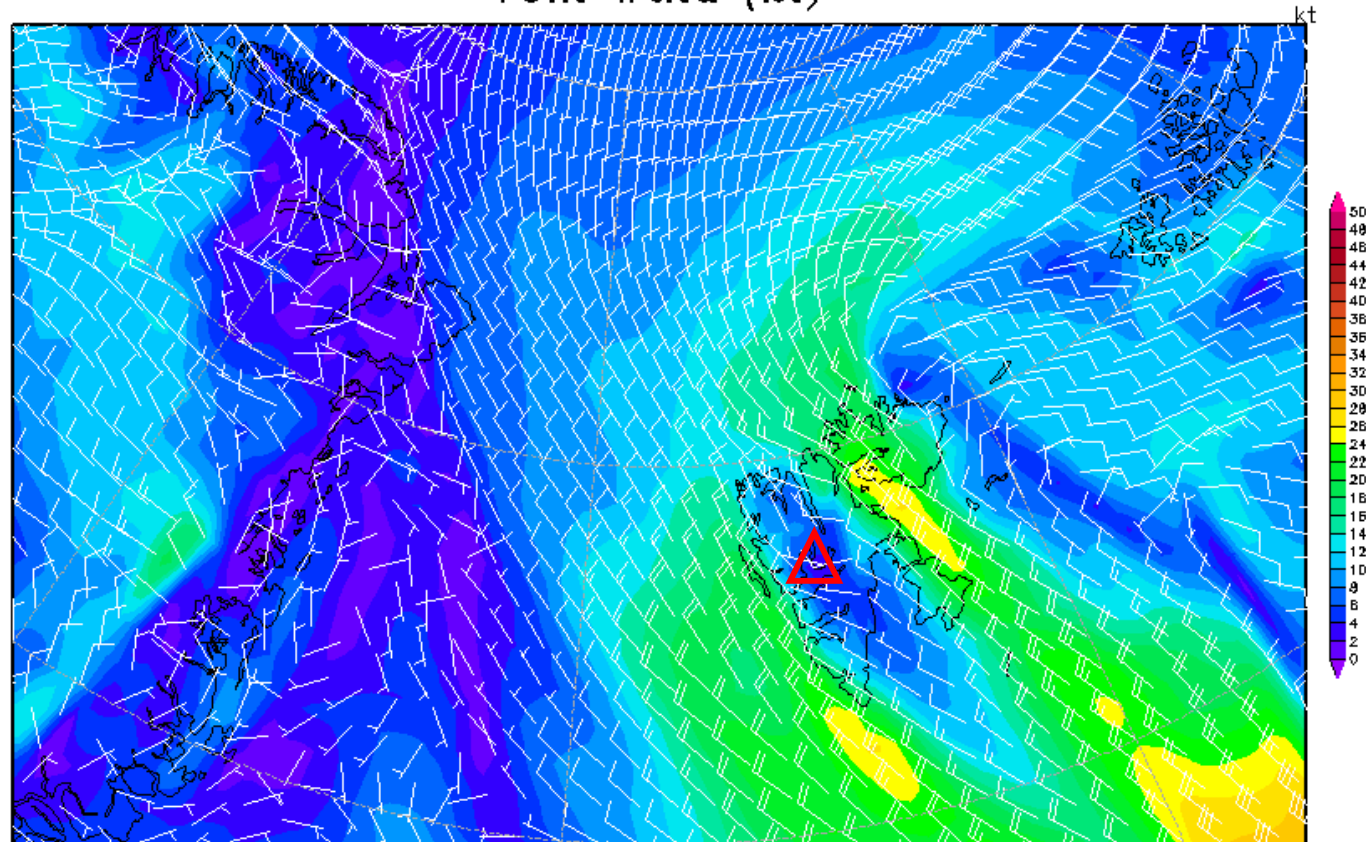


# 10-m Wind 23 May 2017 @ 12 UTC

Init : Mon,22MAY2017 00Z

Valid: Tue,23MAY2017 12Z

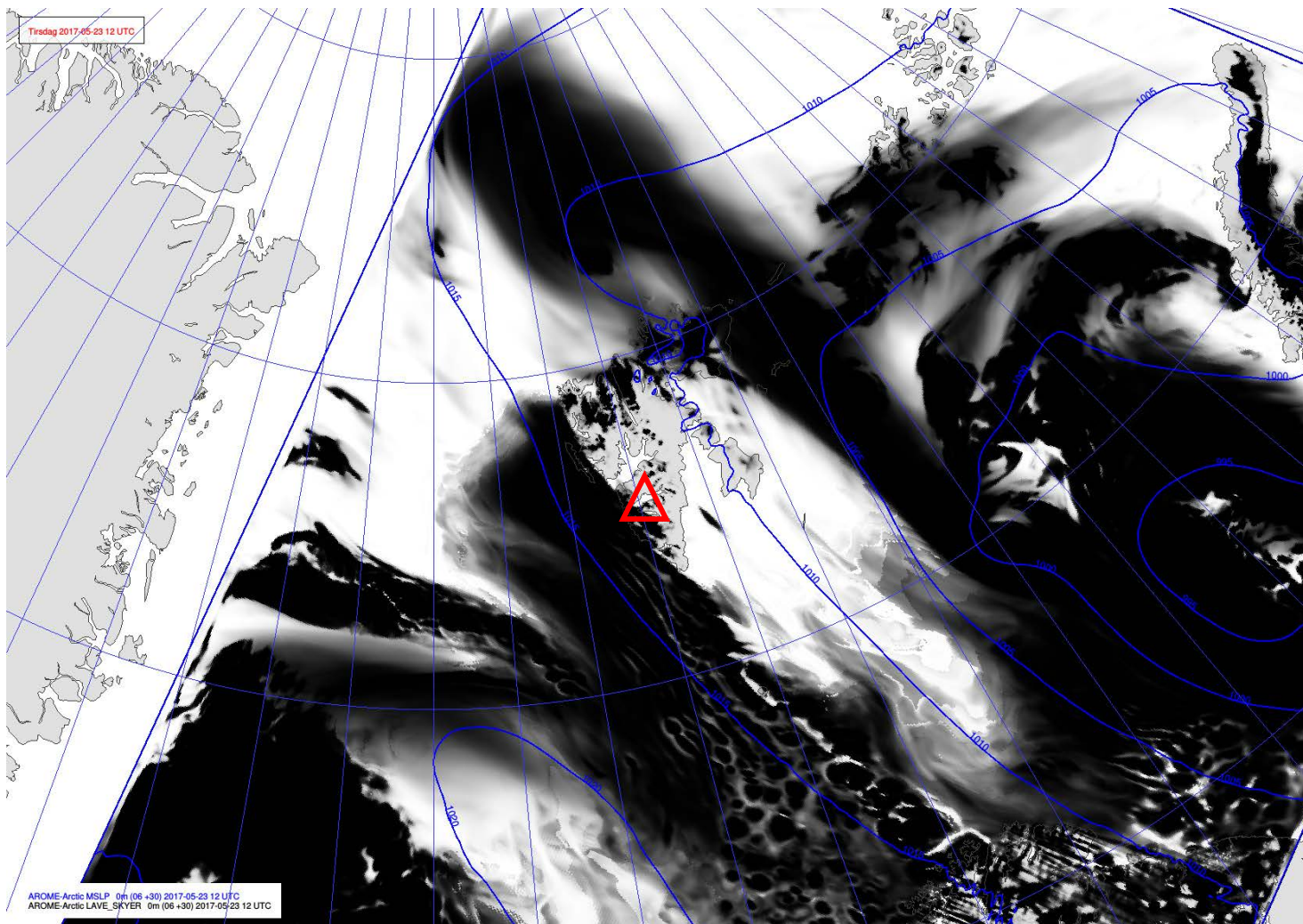
10m Wind (kt)



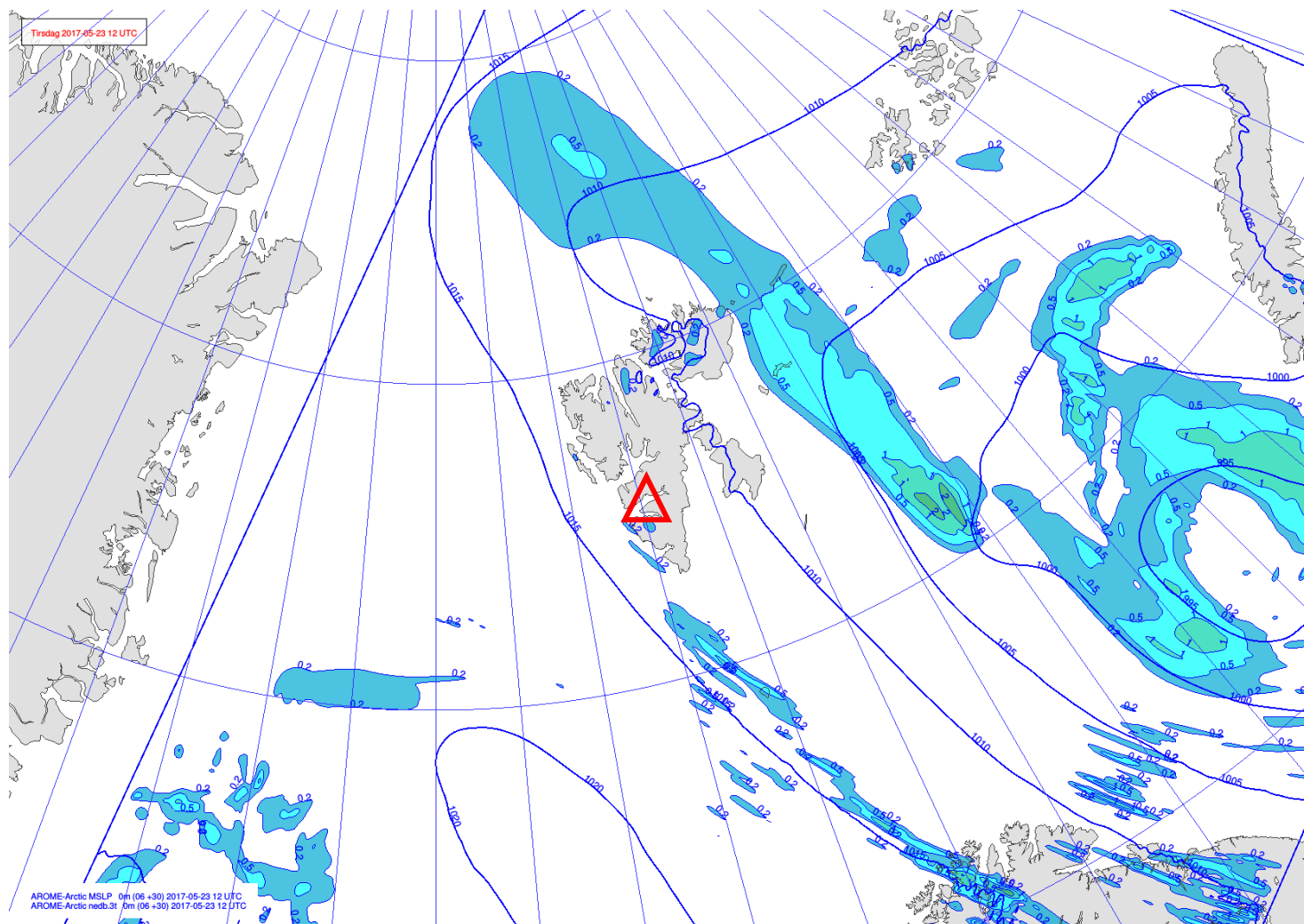
Daten: GFS-Modell des amerikanischen Wetterdienstes  
(C) Wetterzentrale  
[www.wetterzentrale.de](http://www.wetterzentrale.de)



## Low cloud cover 23 May 2017 @ 12 UTC



# Precipitation 23 May 2017 @ 12 UTC



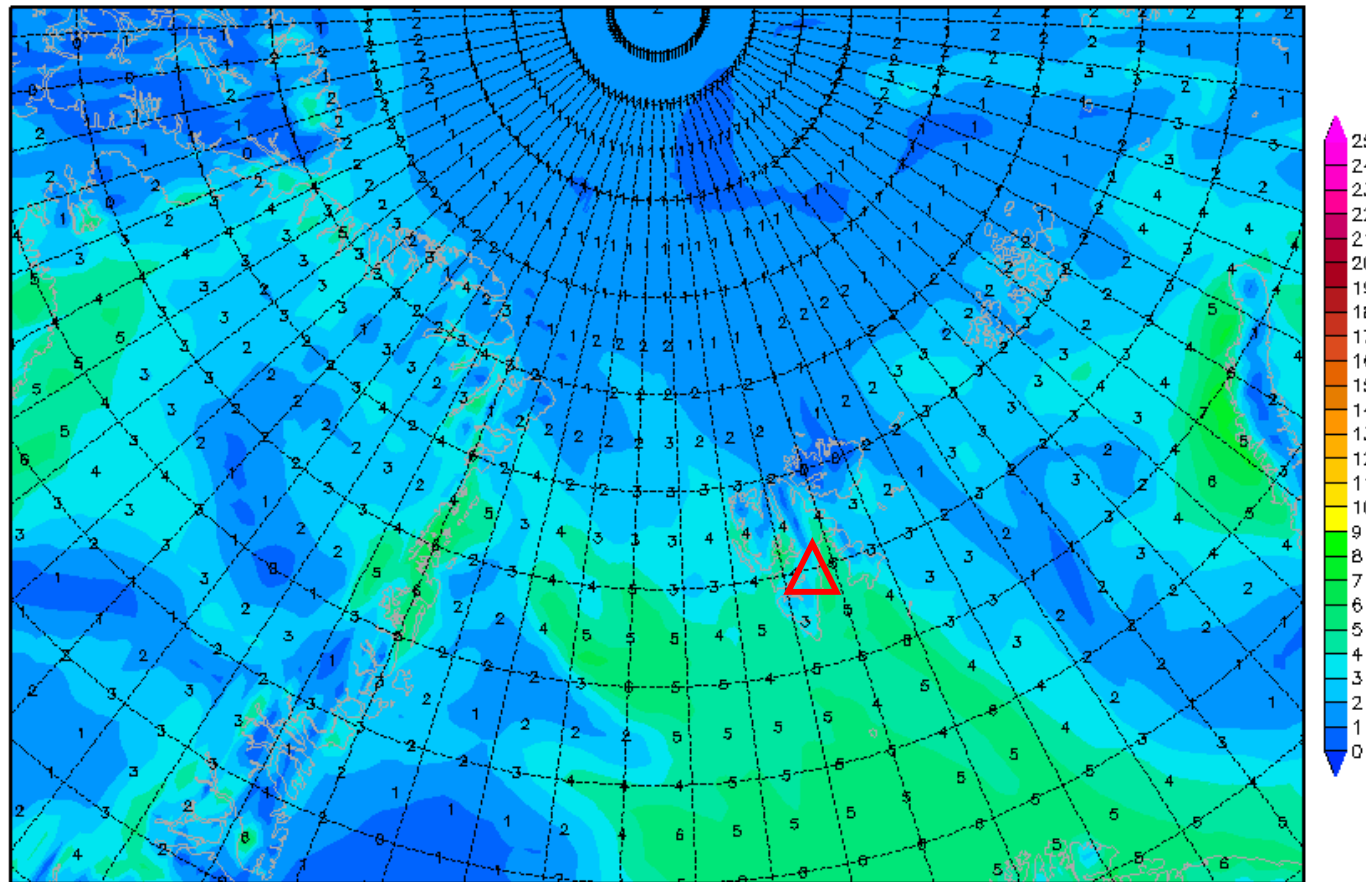


# 2-m dew point diff. 23 May 2017 @ 12 UTC

Init : Mon,22MAY2017 00Z

Valid: Tue,23MAY2017 12Z

*2m (Temperatur-Taupunkt)*

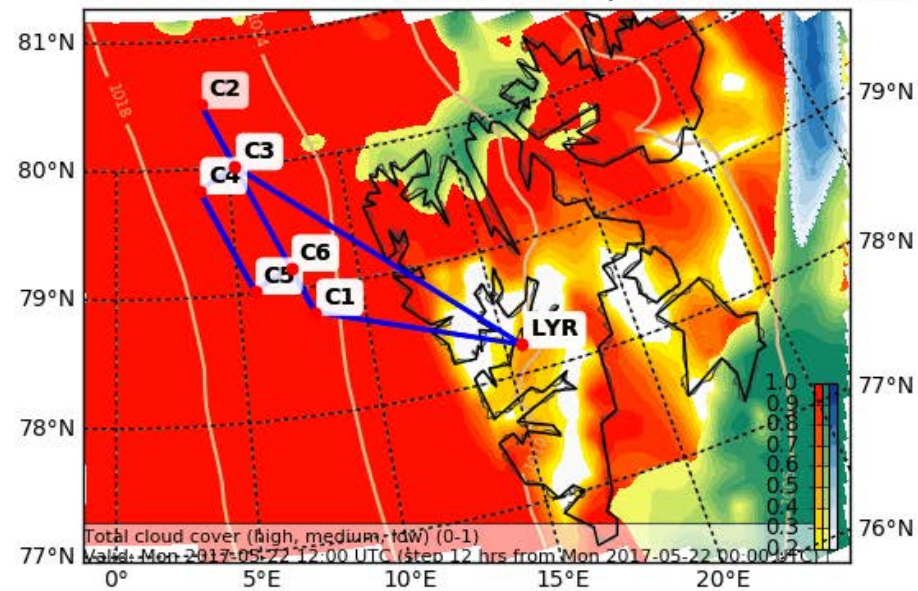


Daten: GFS  
(C) Wetterzentrale  
[www.wetterzentrale.de](http://www.wetterzentrale.de)

# Forecast Tomorrow 12 UTC

Cloud Cover (0-1) (Total Cloud Cover)

Valid: Mon 2017-05-22 12:00 UTC (step 12 hrs from Mon 2017-05-22 00:00 UTC)

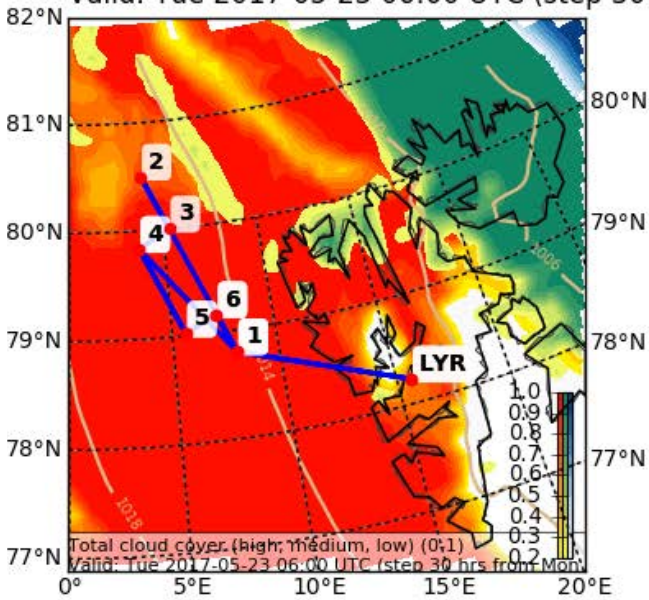


EPSG:77790000

# Forecast Tomorrow 06 UTC

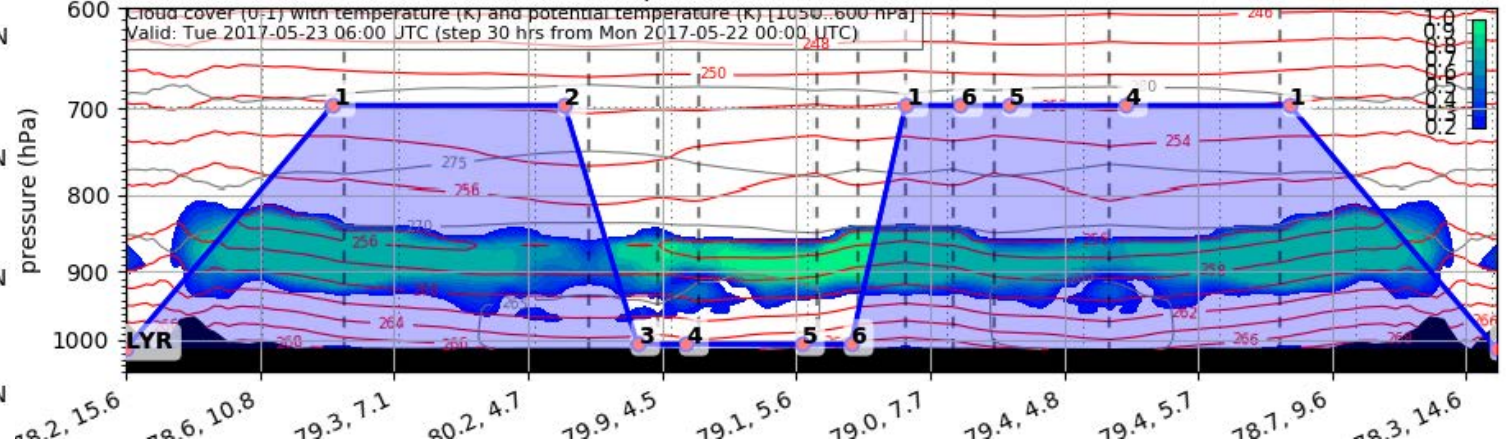
Cloud Cover (0-1) (Total Cloud Cover)

Valid: Tue 2017-05-23 06:00 UTC (step 30)



Valid: Tue 2017-05-23 06:00 UTC (step 30 hrs from Mon 2017-05-22 00:00 UTC)

cloud cover (0-1) with temperature (K) and potential temperature (K) [1050..600 hPa]  
valid: Tue 2017-05-23 06:00 UTC (step 30 hrs from Mon 2017-05-22 00:00 UTC)

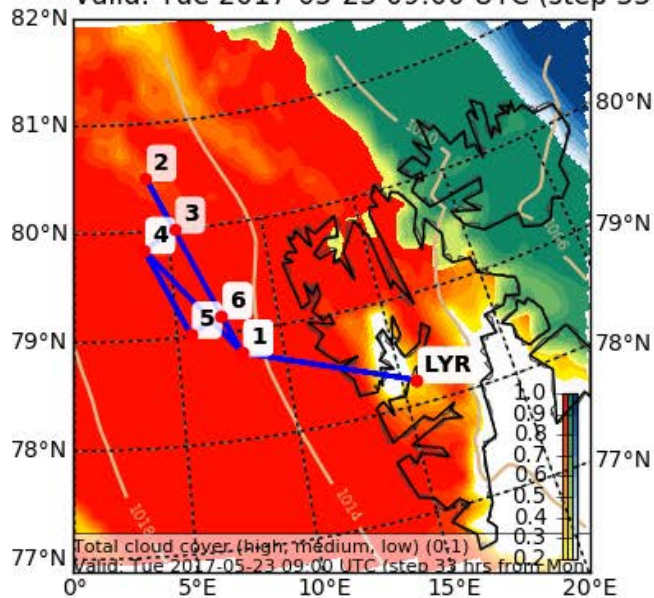




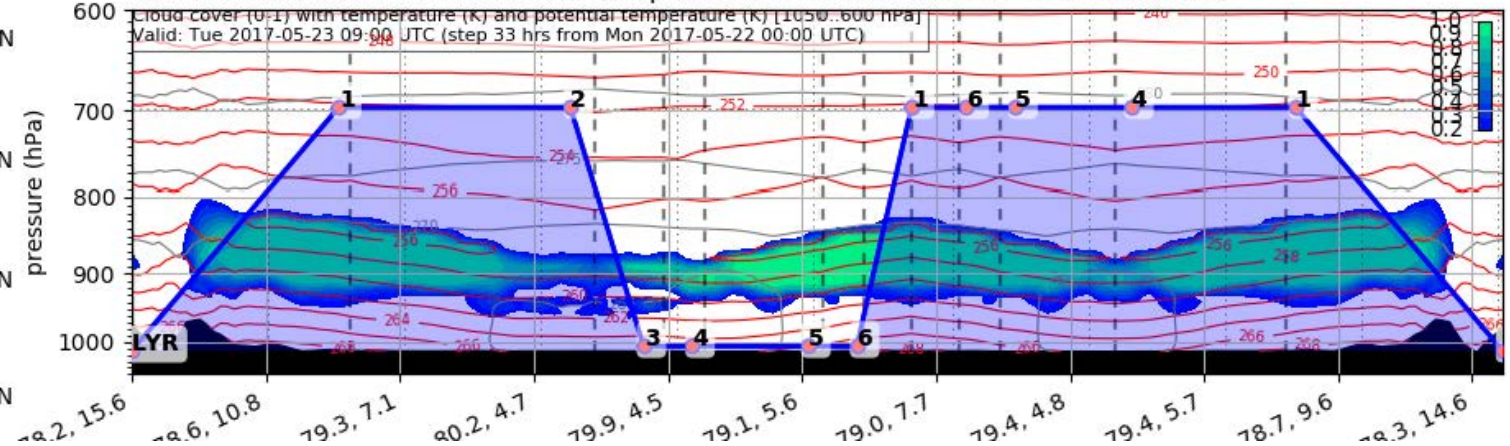
# Forecast Tomorrow 09 UTC

Cloud Cover (0-1) (Total Cloud Cover)

Valid: Tue 2017-05-23 09:00 UTC (step 33)



Valid: Tue 2017-05-23 09:00 UTC (step 33 hrs from Mon 2017-05-22 00:00 UTC)

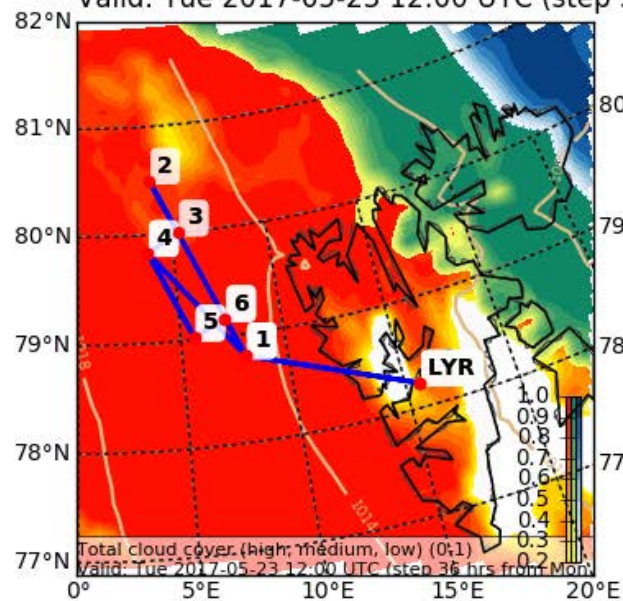




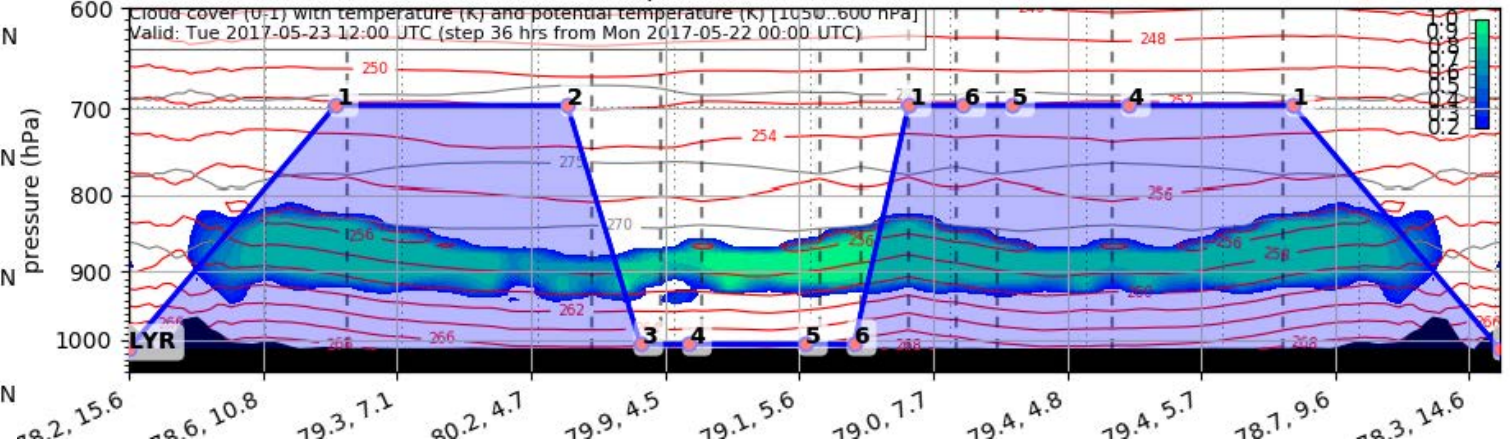
# Forecast Tomorrow 12 UTC

Cloud Cover (0-1) (Total Cloud Cover)

Valid: Tue 2017-05-23 12:00 UTC (step 36)



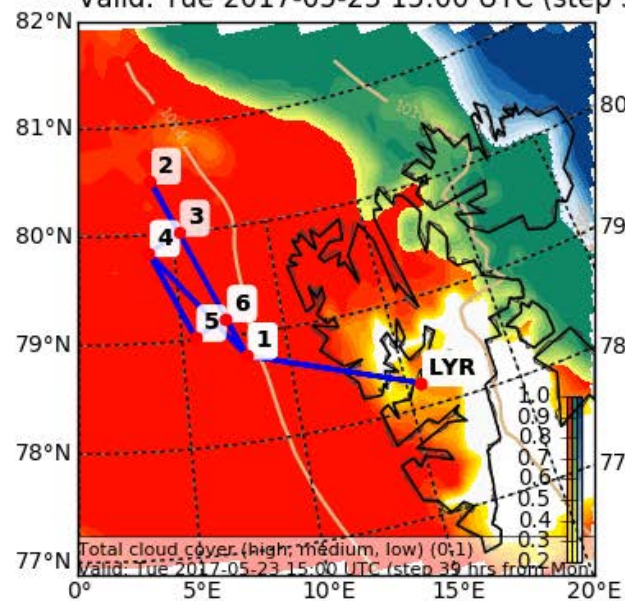
Valid: Tue 2017-05-23 12:00 UTC (step 36 hrs from Mon 2017-05-22 00:00 UTC)



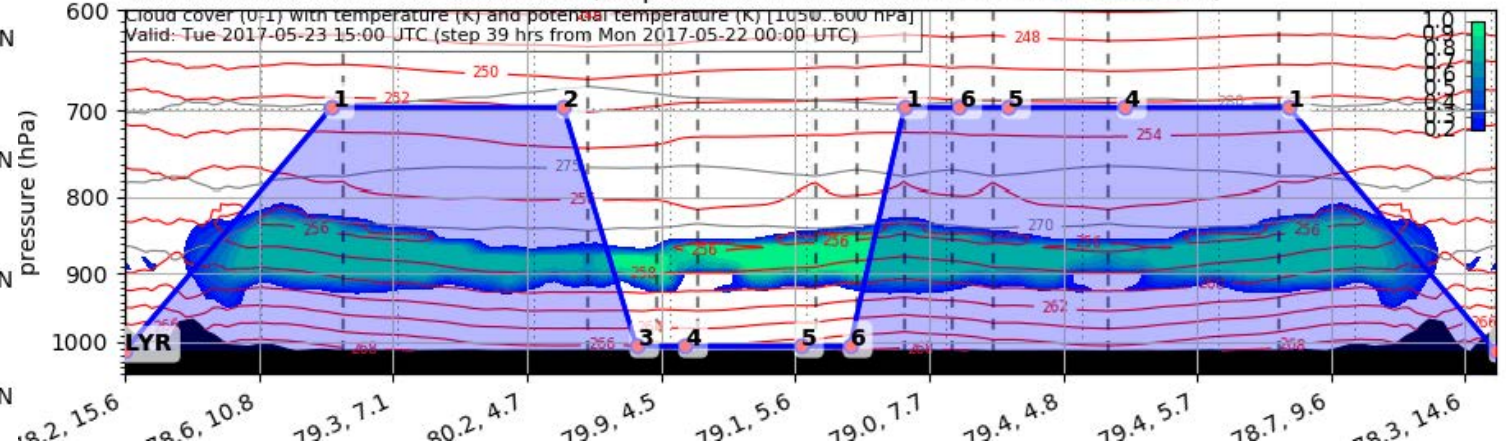
# Forecast Tomorrow 15 UTC

Cloud Cover (0-1) (Total Cloud Cover)

Valid: Tue 2017-05-23 15:00 UTC (step 39)

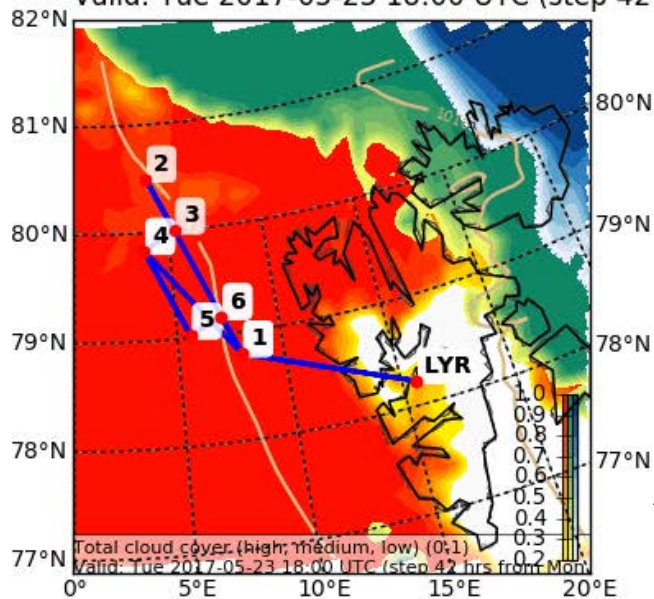


Valid: Tue 2017-05-23 15:00 UTC (step 39 hrs from Mon 2017-05-22 00:00 UTC)

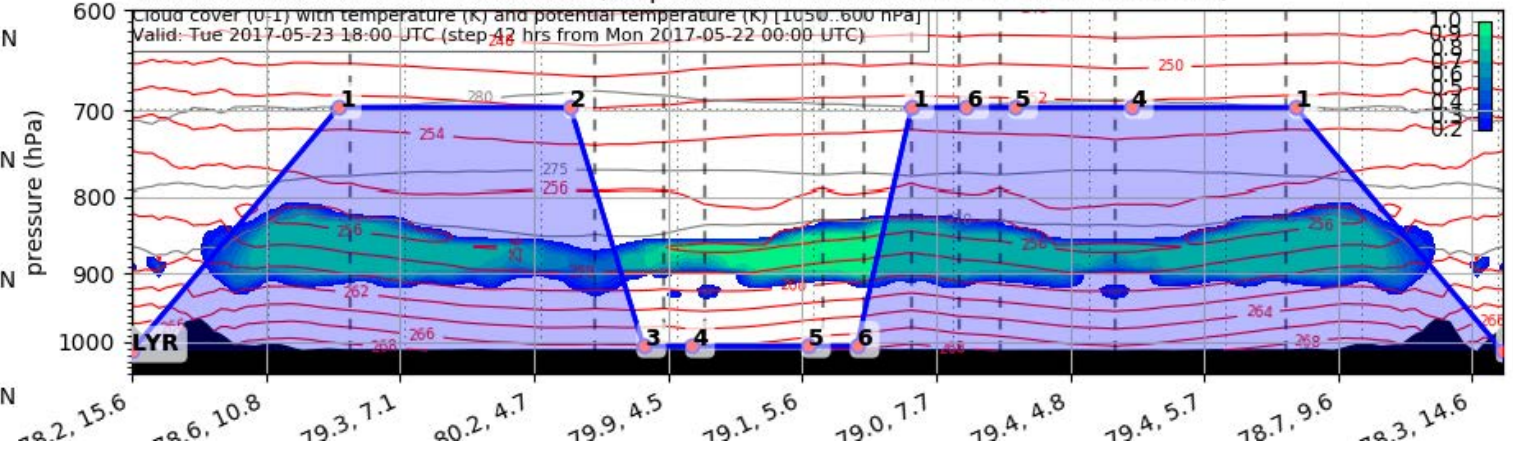


# Forecast Tomorrow 18 UTC

Cloud Cover (0-1) (Total Cloud Cover)  
Valid: Tue 2017-05-23 18:00 UTC (step 42)



Valid: Tue 2017-05-23 18:00 UTC (step 42 hrs from Mon 2017-05-22 00:00 UTC)



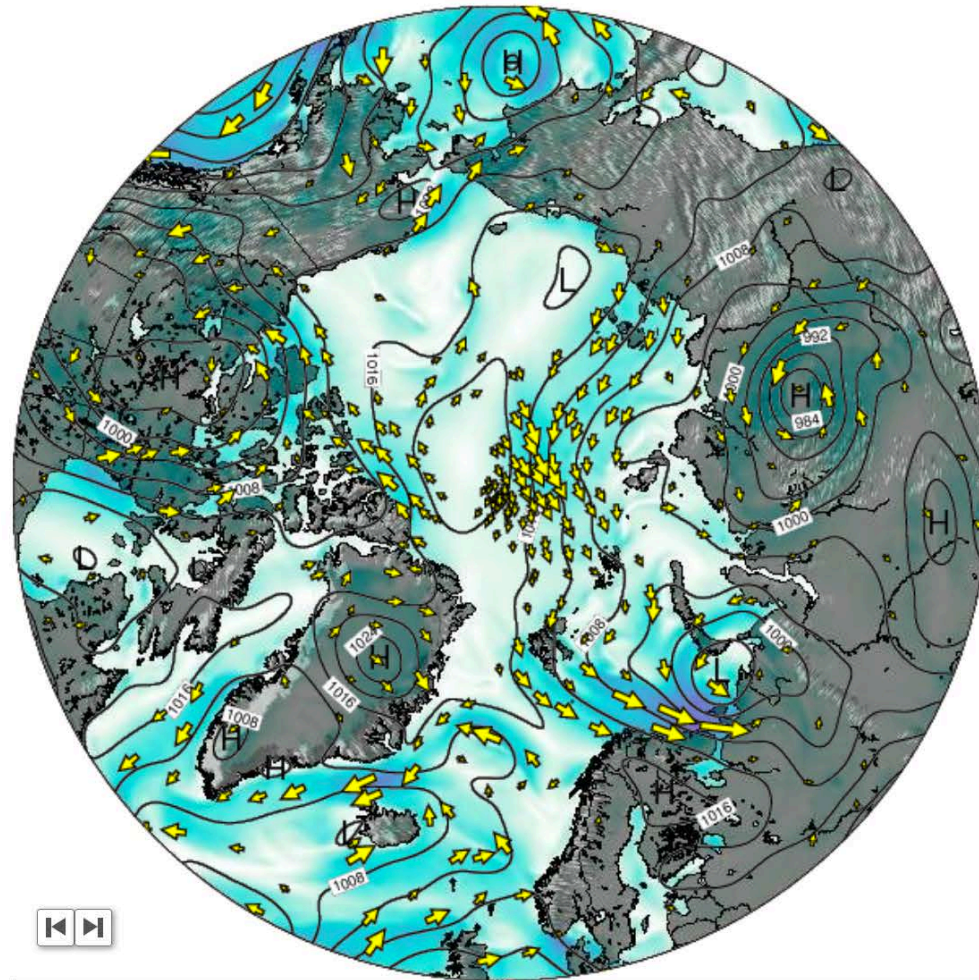


# Outlook

**Wed 24 May – Thu 25 May 2017**

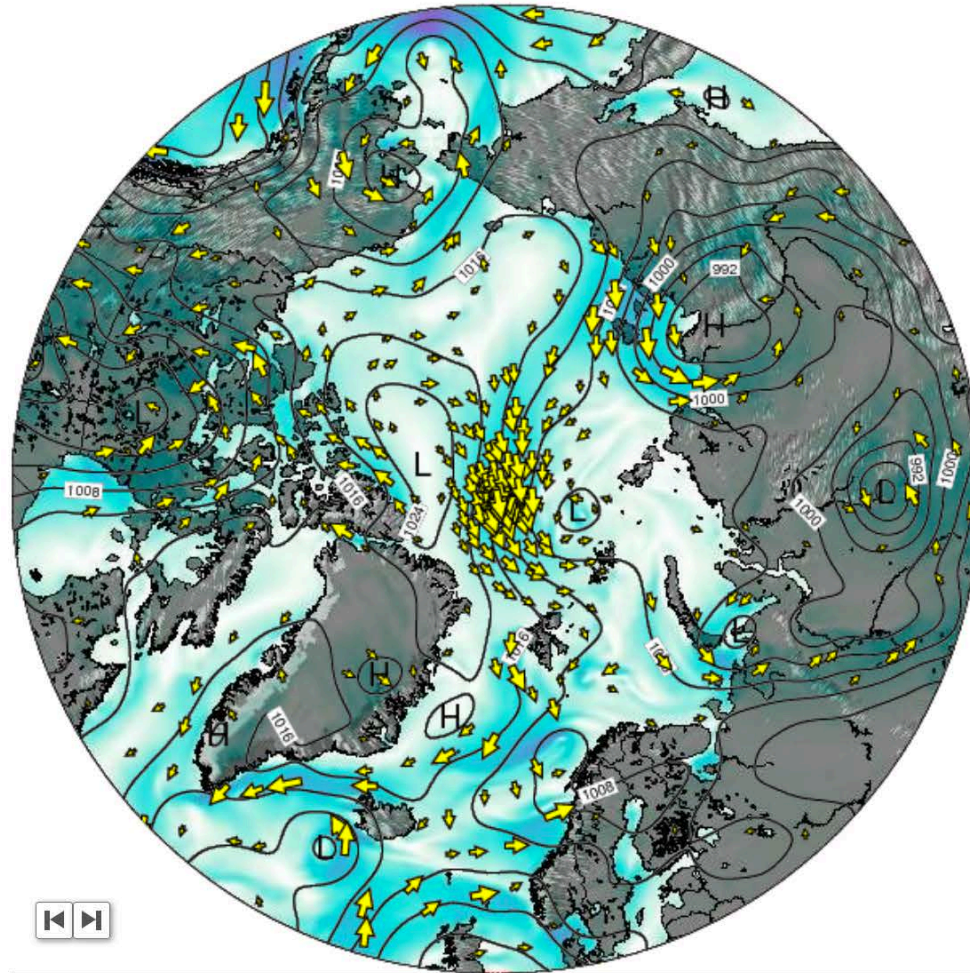
# Outlook – General Weather Situation

Surface Wind on Wednesday 24 May at 12am UTC



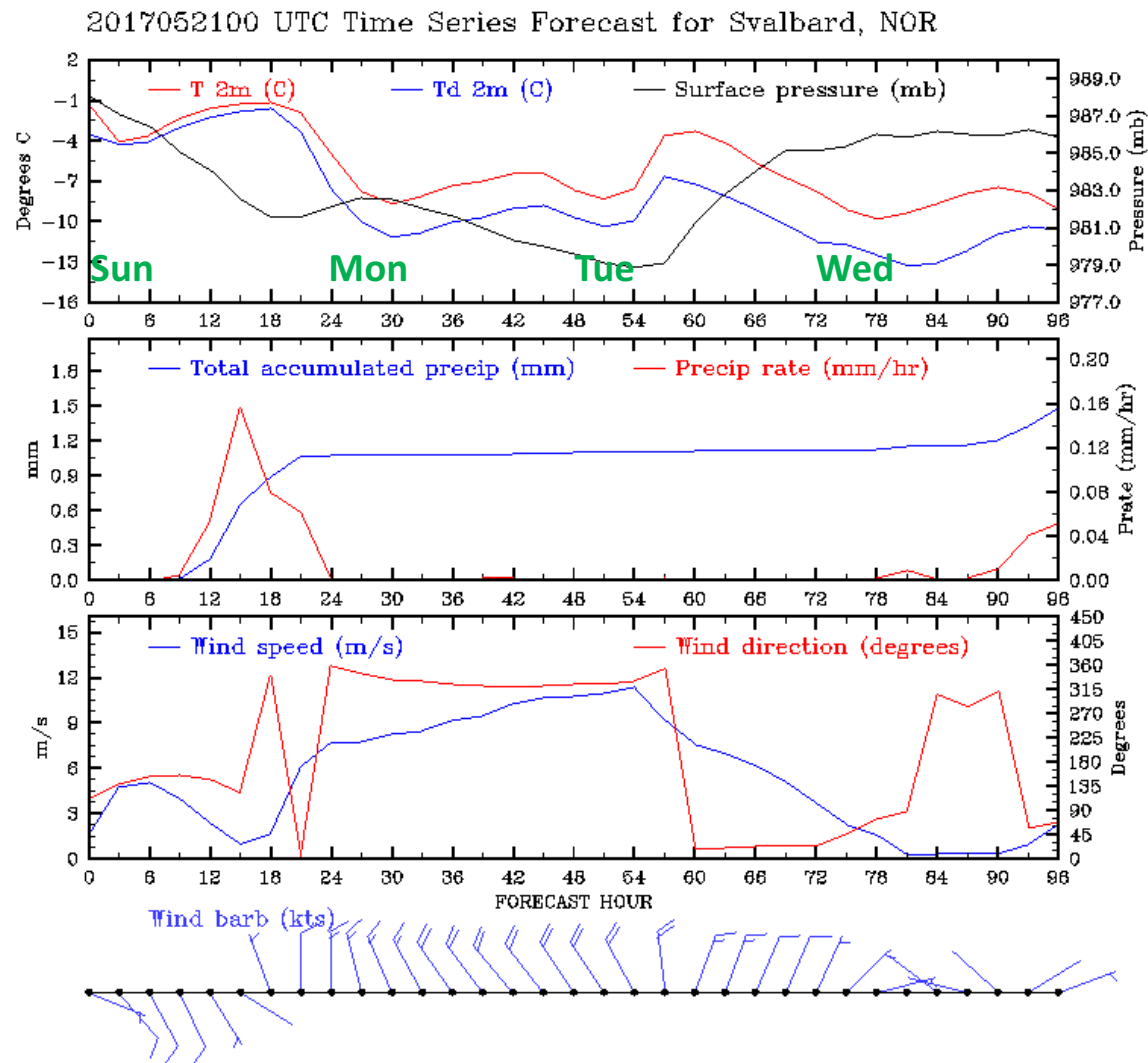
# Outlook – General Weather Situation

Surface Wind on Thursday 25 May at 12am UTC



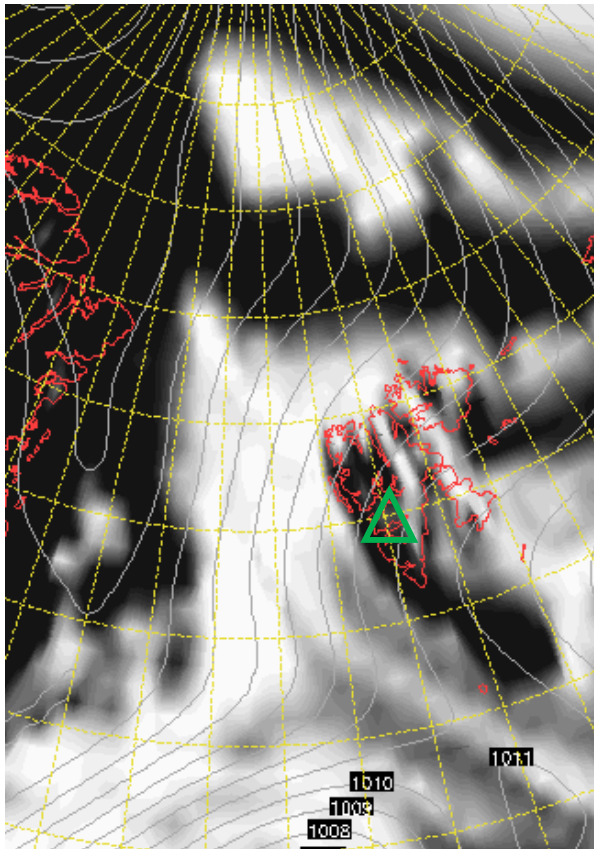


## Outlook – Meteogram

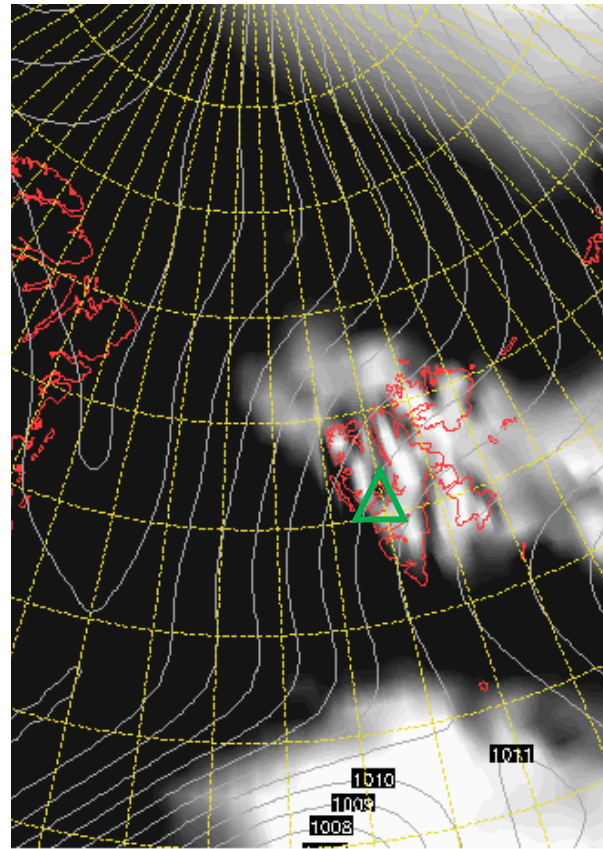


## Cloud Cover 24 May 2017 @ 12 UTC

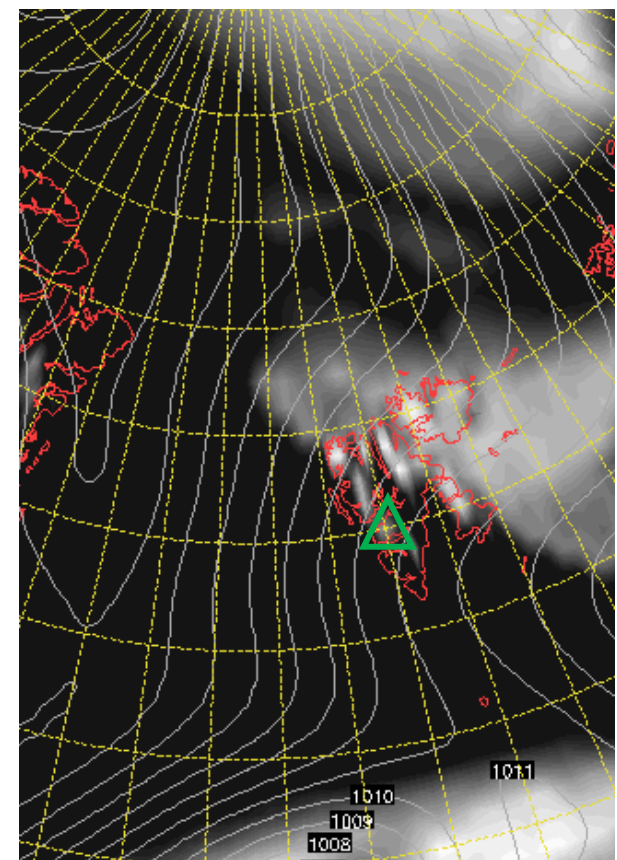
L



M



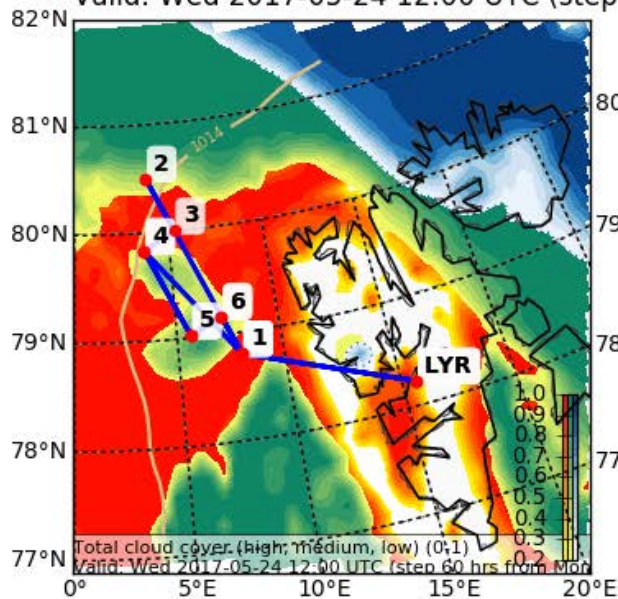
H



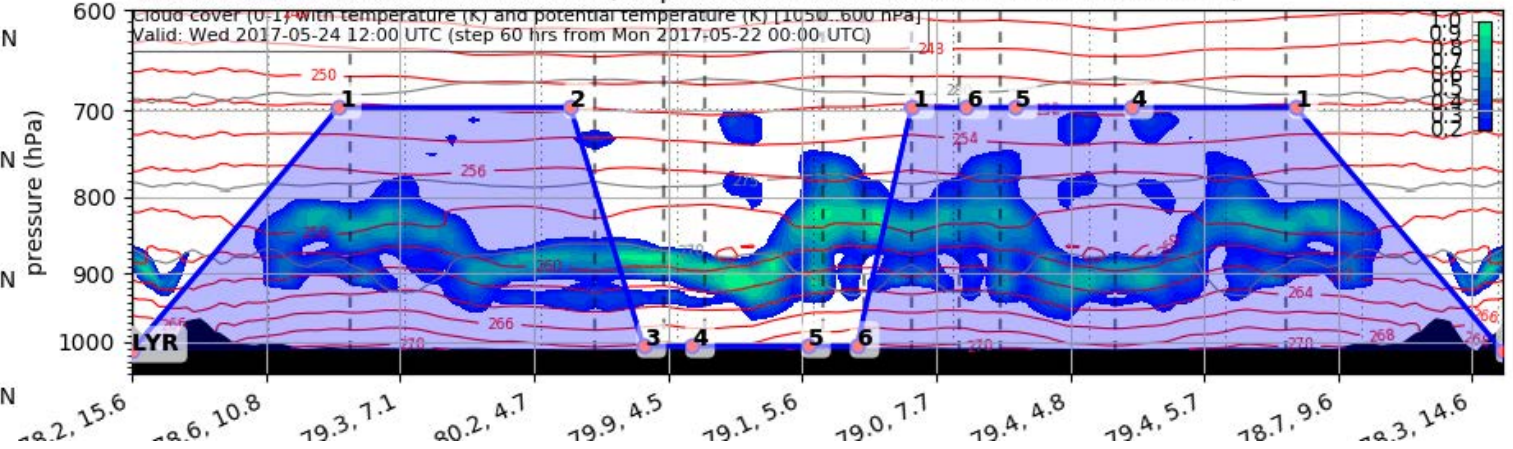
# Forecast After Tomorrow 12 UTC

Cloud Cover (0-1) (Total Cloud Cover)

Valid: Wed 2017-05-24 12:00 UTC (step 60)



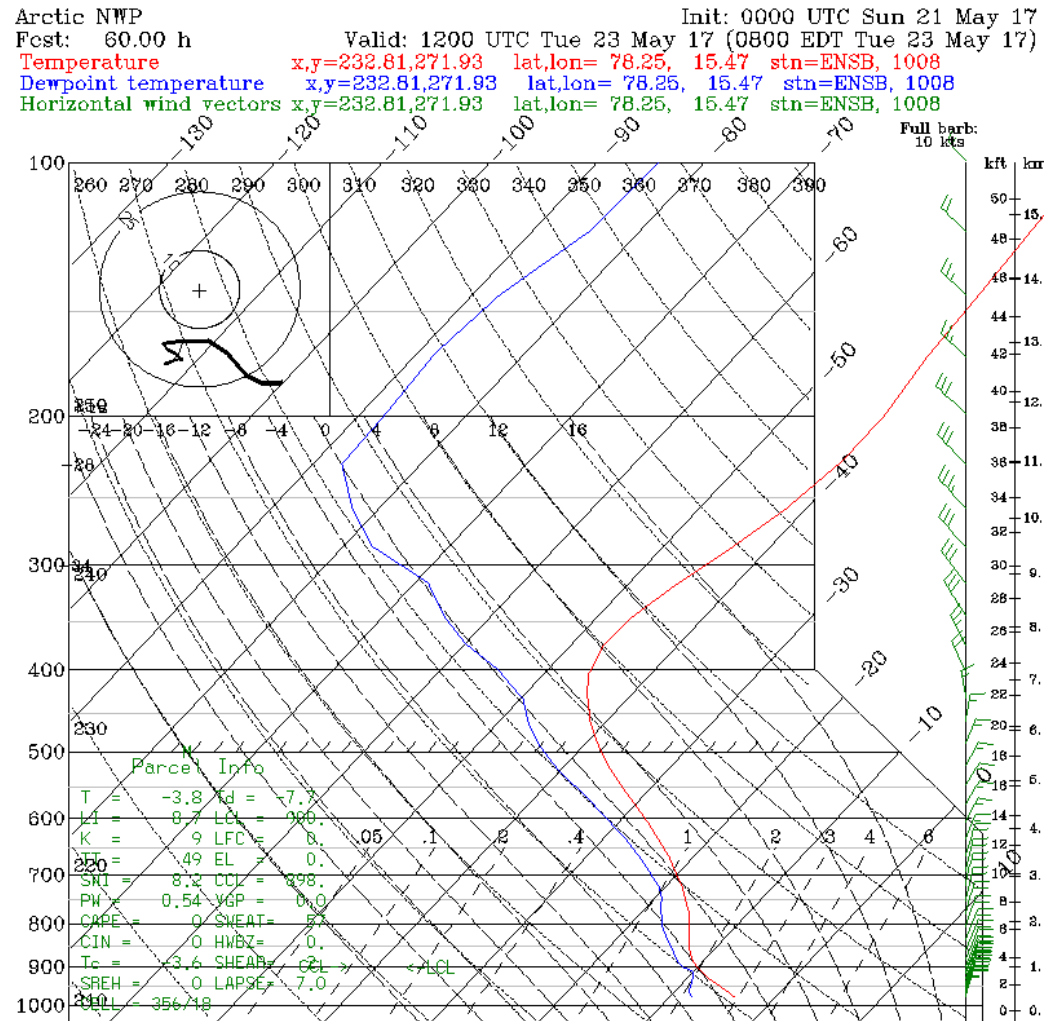
Valid: Wed 2017-05-24 12:00 UTC (step 60 hrs from Mon 2017-05-22 00:00 UTC)







# Sounding Longyearbyen 23 May 2017 @ 12 UTC



# Precip. Water 22 May 2017

GFS 0.25°x0.25°  
Daily Average

Precipitable Water  
Saturday, May 20, 2017

