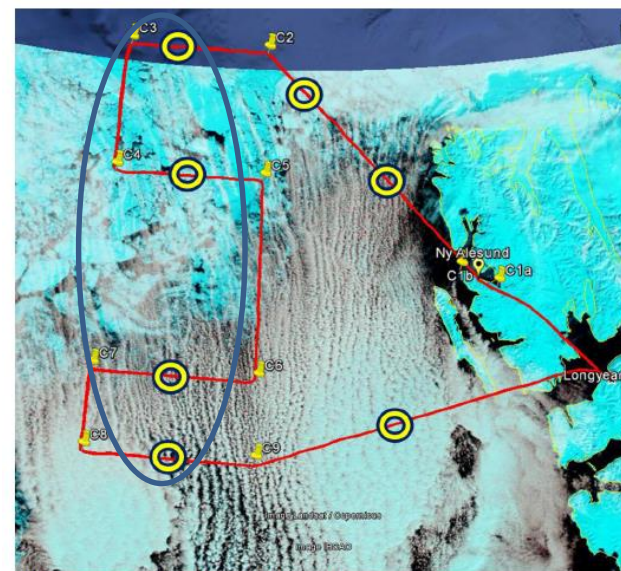
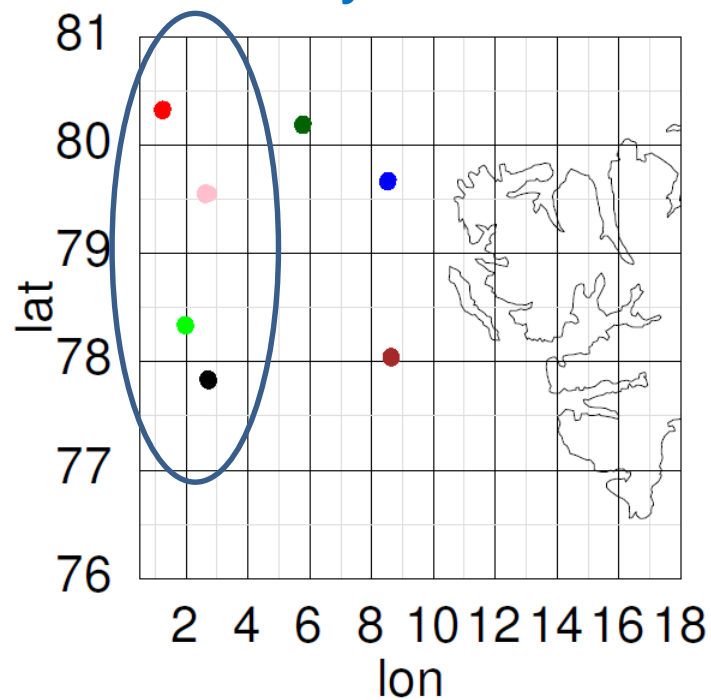
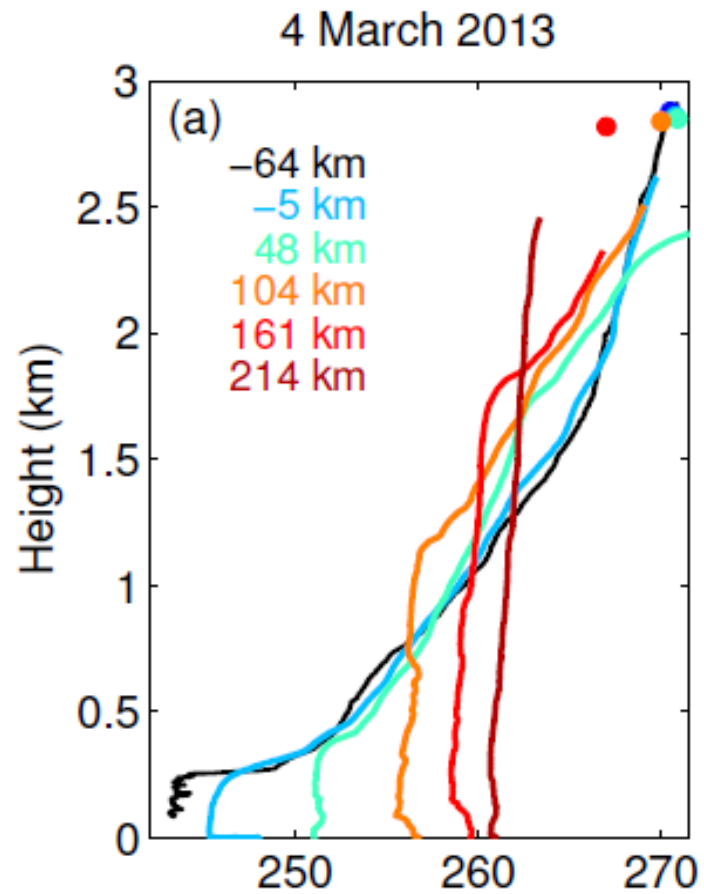
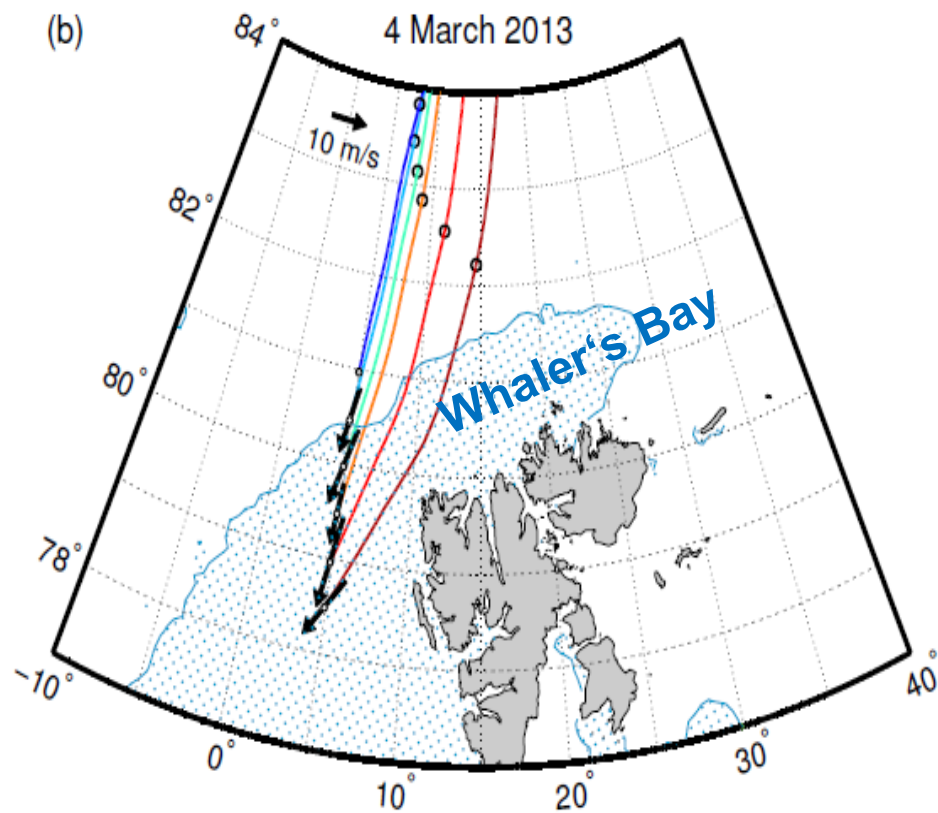


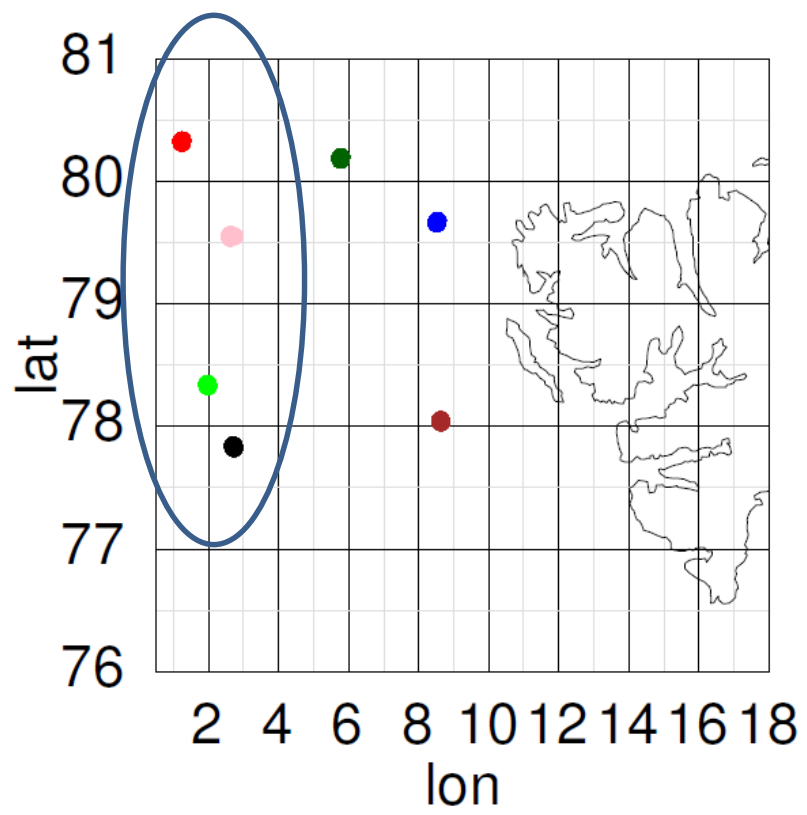
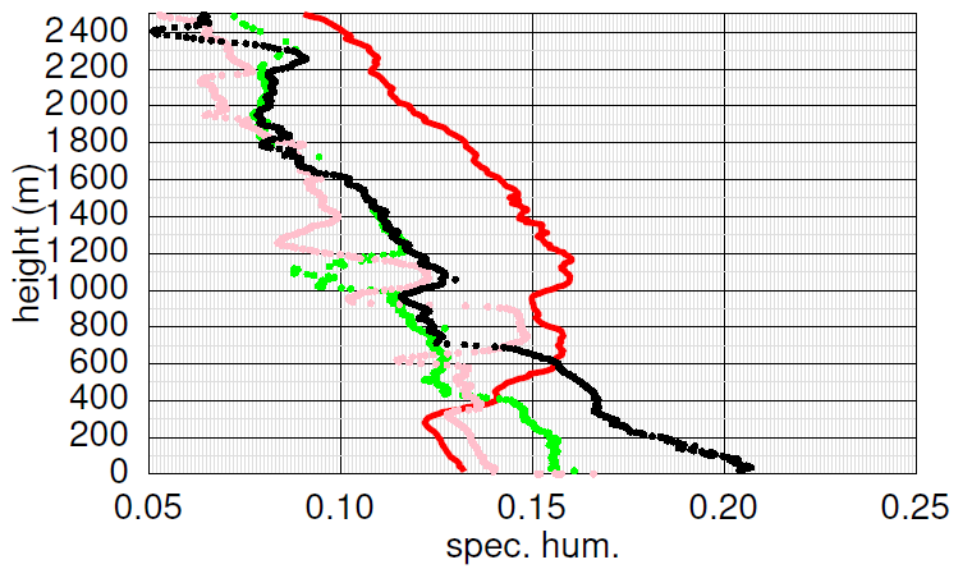
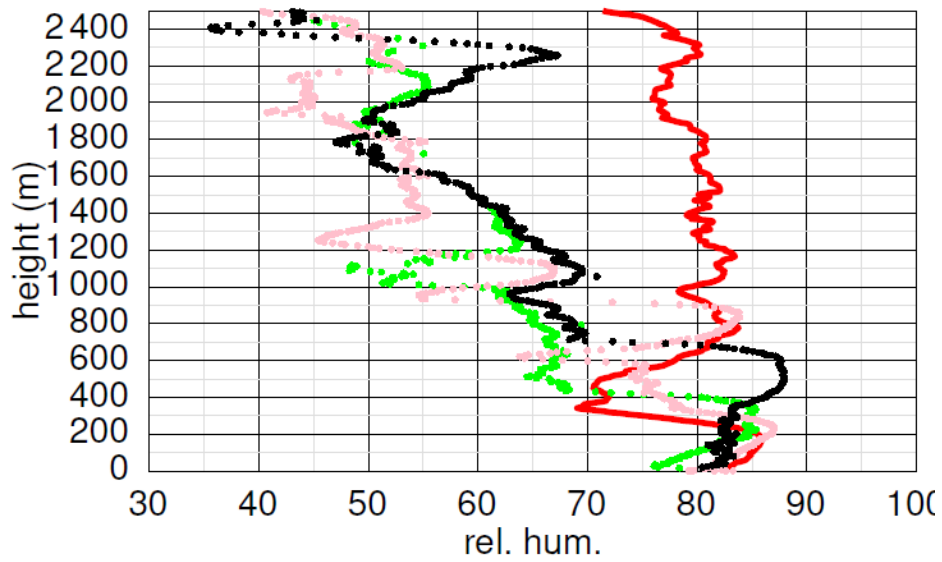
25 May 2017



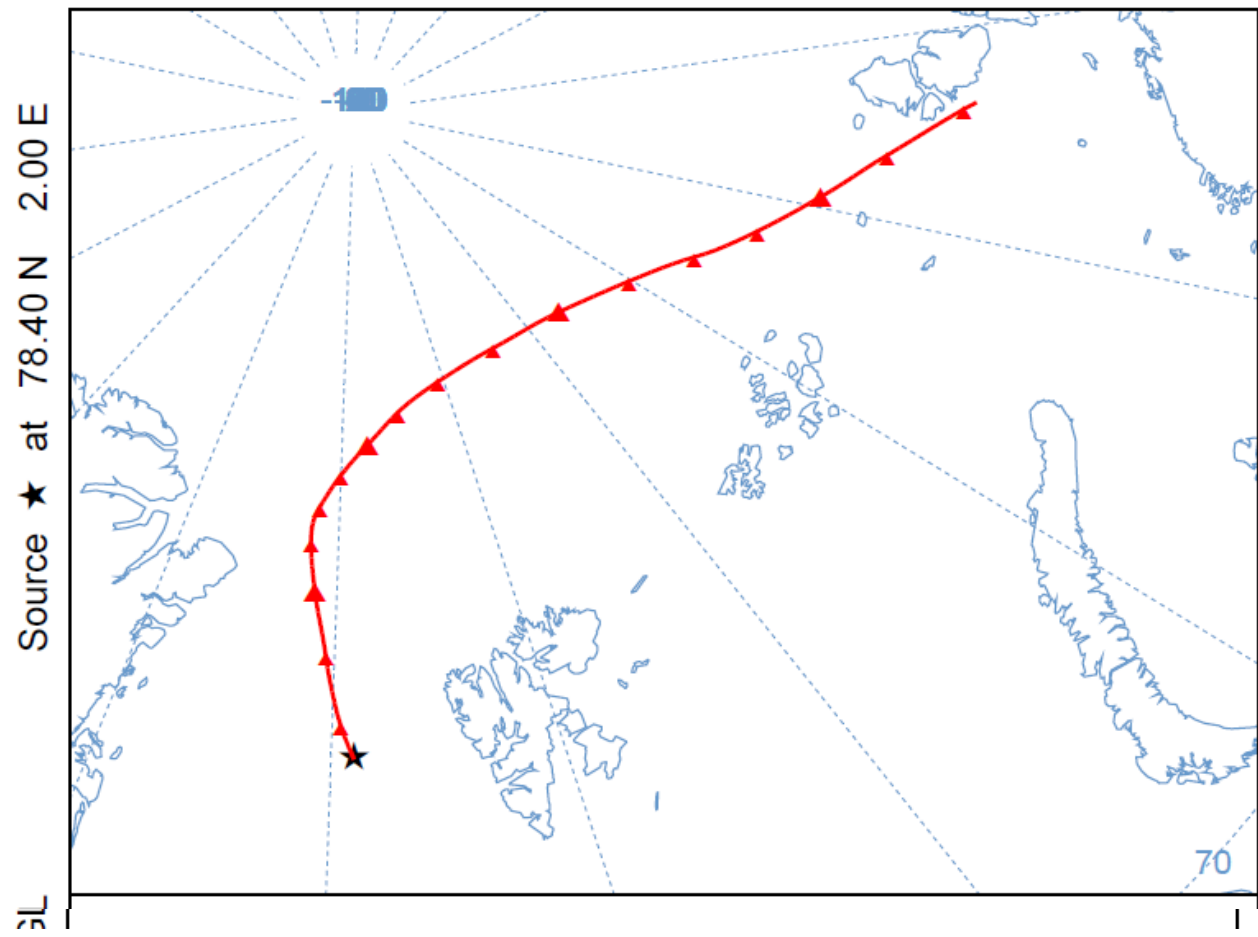
# AWI campaign STABLE 2013

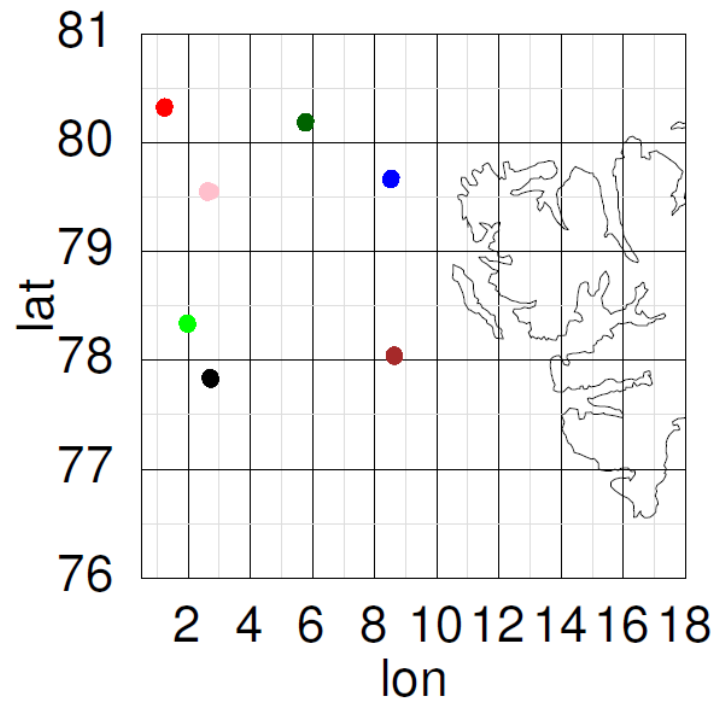
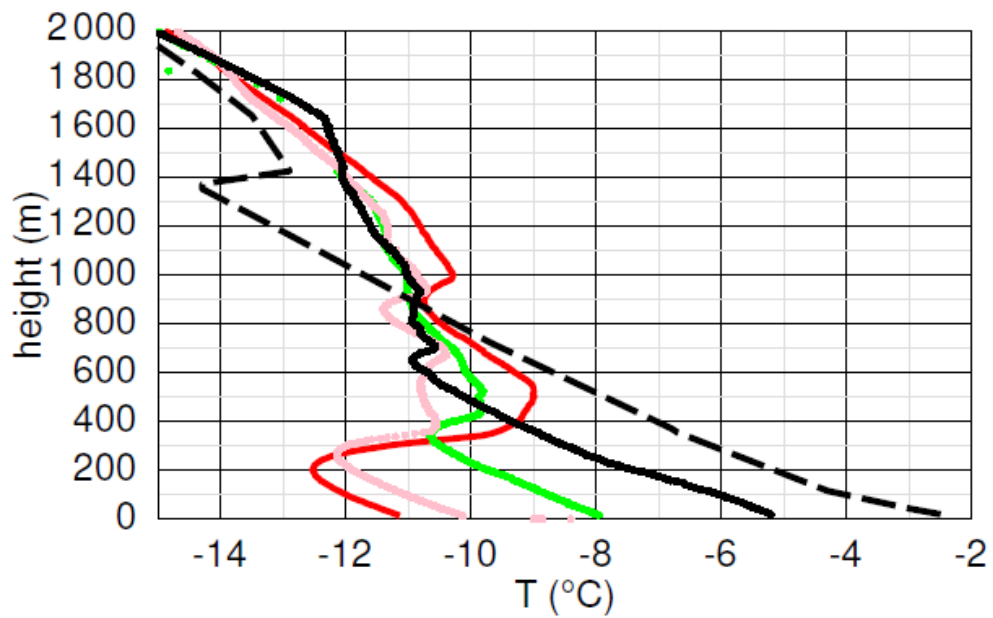
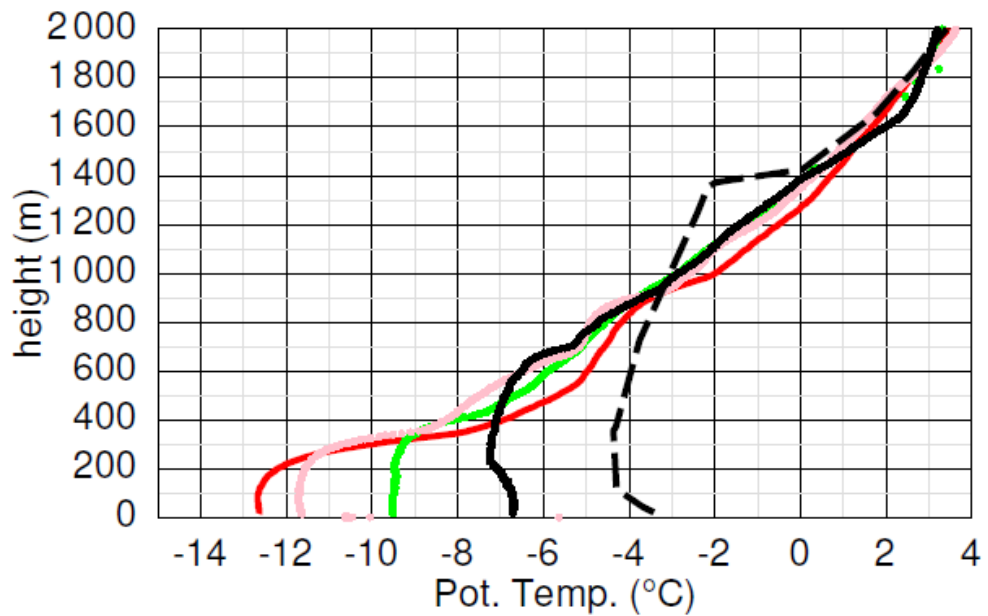
Tetzlaff et al. 2014

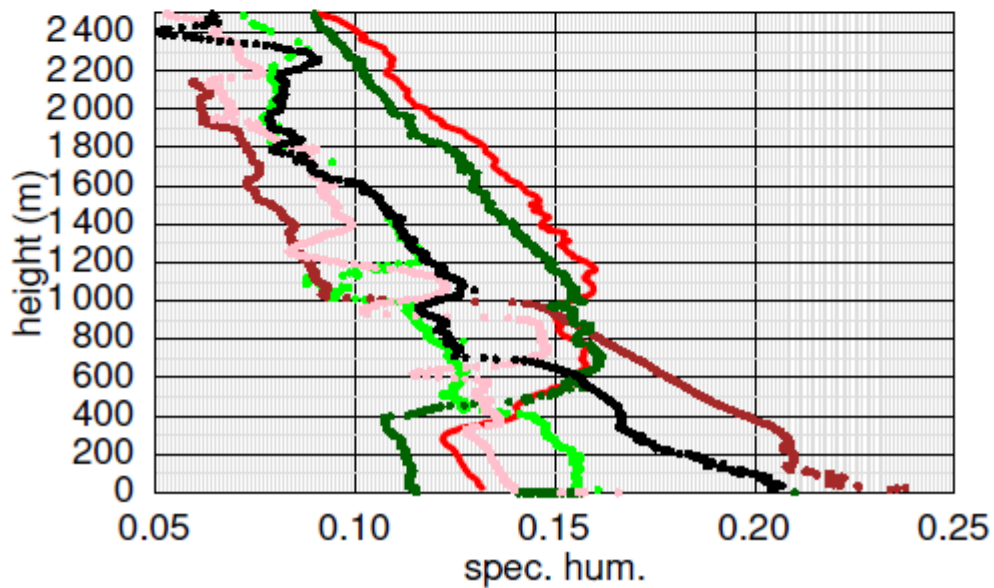
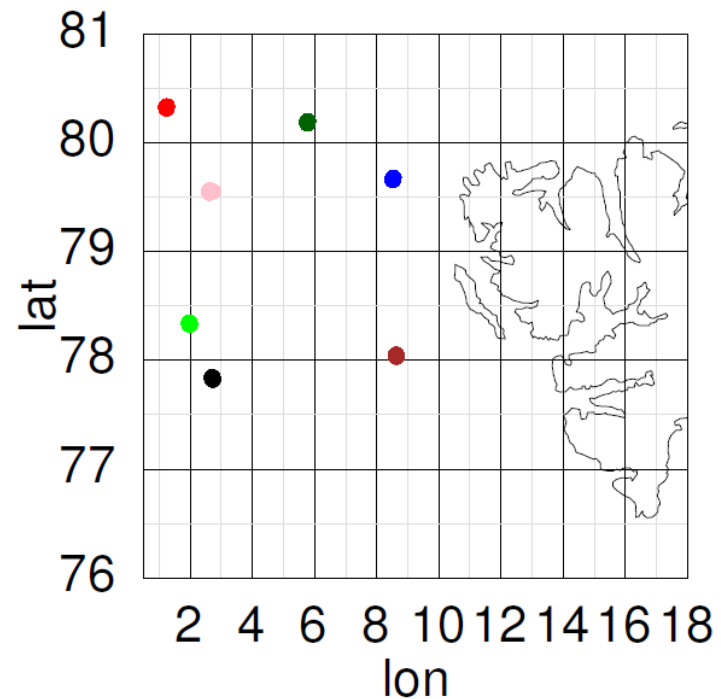
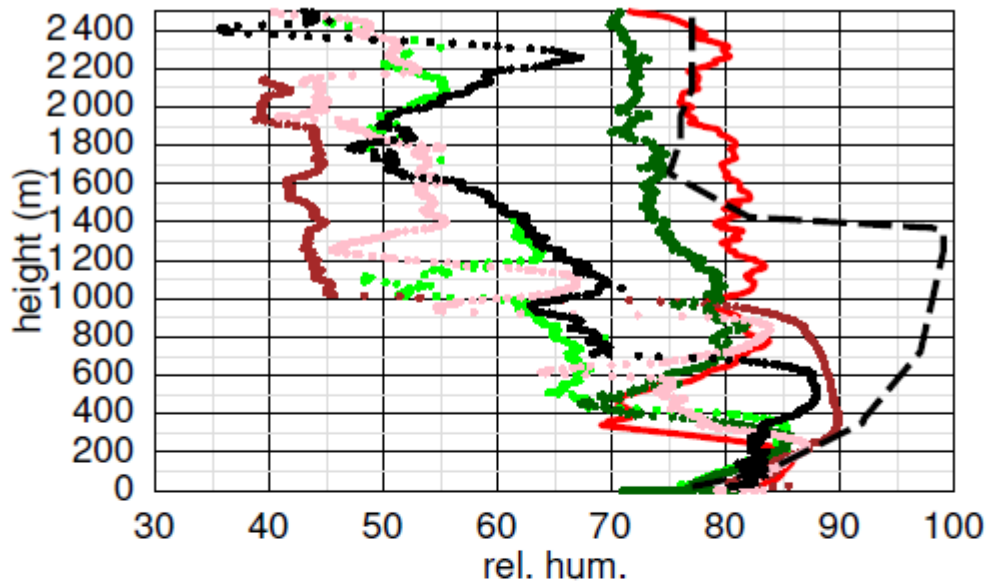




NOAA HYSPLIT MODEL  
Backward trajectory ending at 1500 UTC 25 May 17  
GFSG Meteorological Data

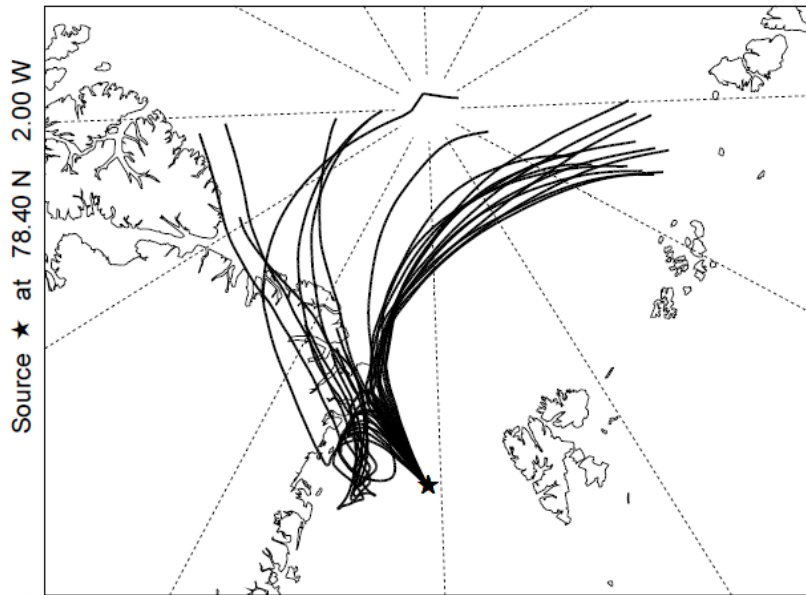






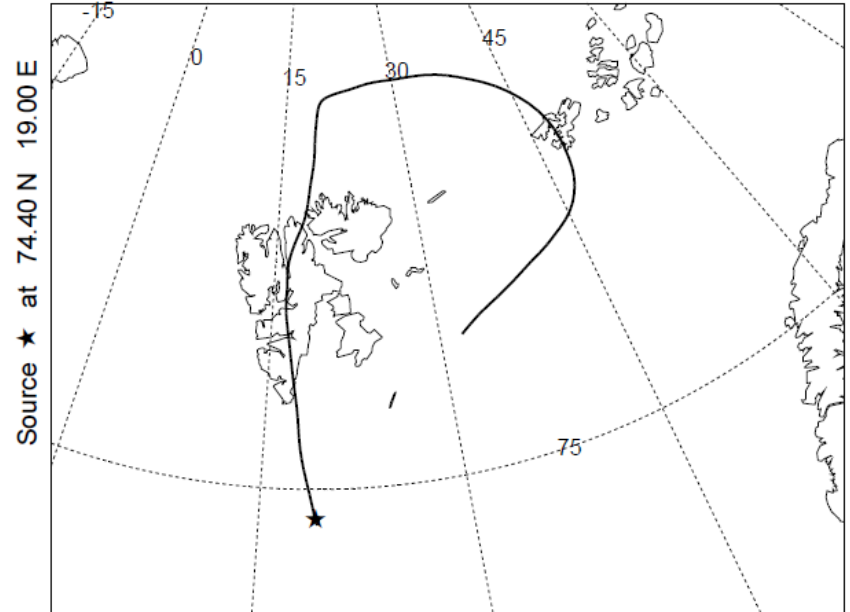
# Start slightly west of drop sonde position

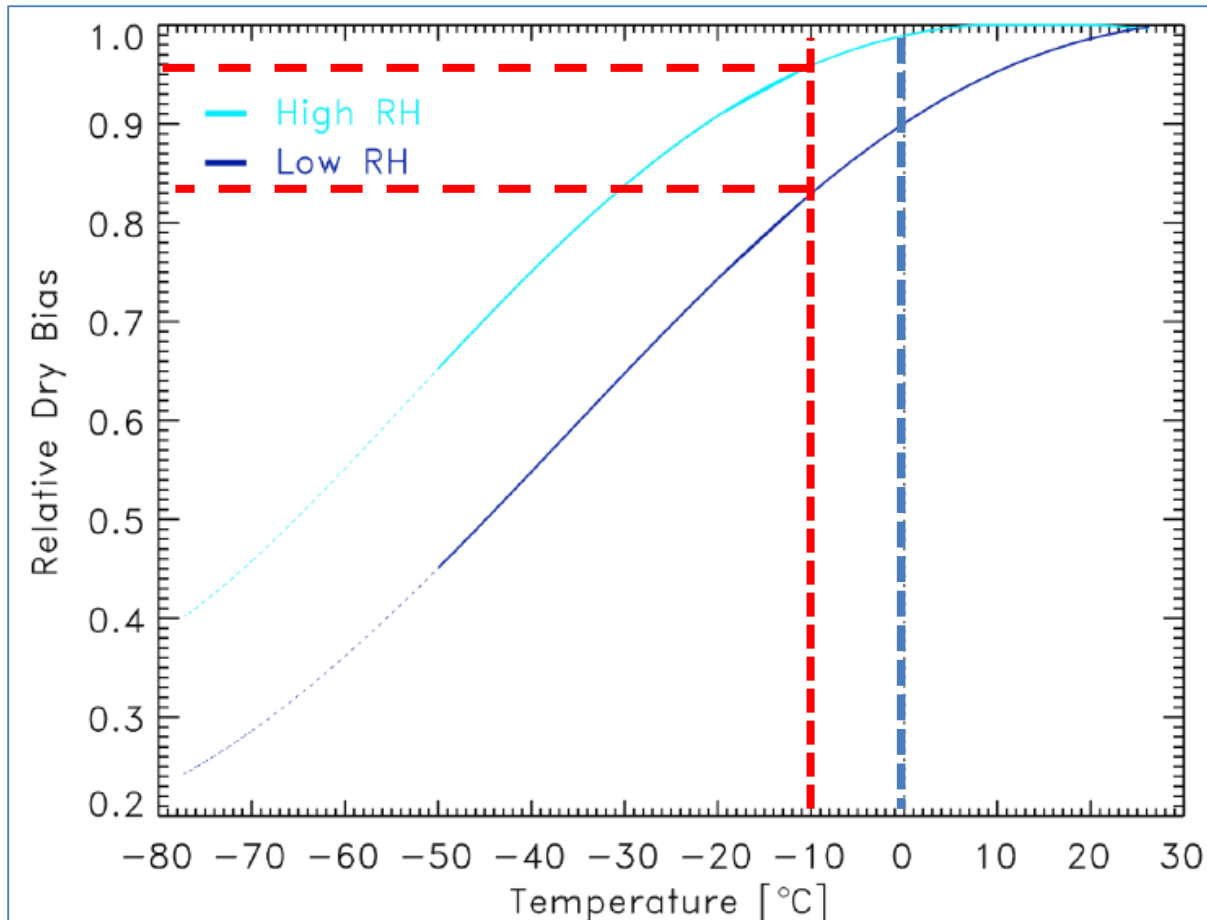
NOAA HYSPLIT MODEL  
Backward trajectories ending at 1900 UTC 25 May 17  
GFSG Meteorological Data



# Start at Bjornoya

NOAA HYSPLIT MODEL  
Backward trajectory ending at 1900 UTC 25 May 17  
GFSG Meteorological Data





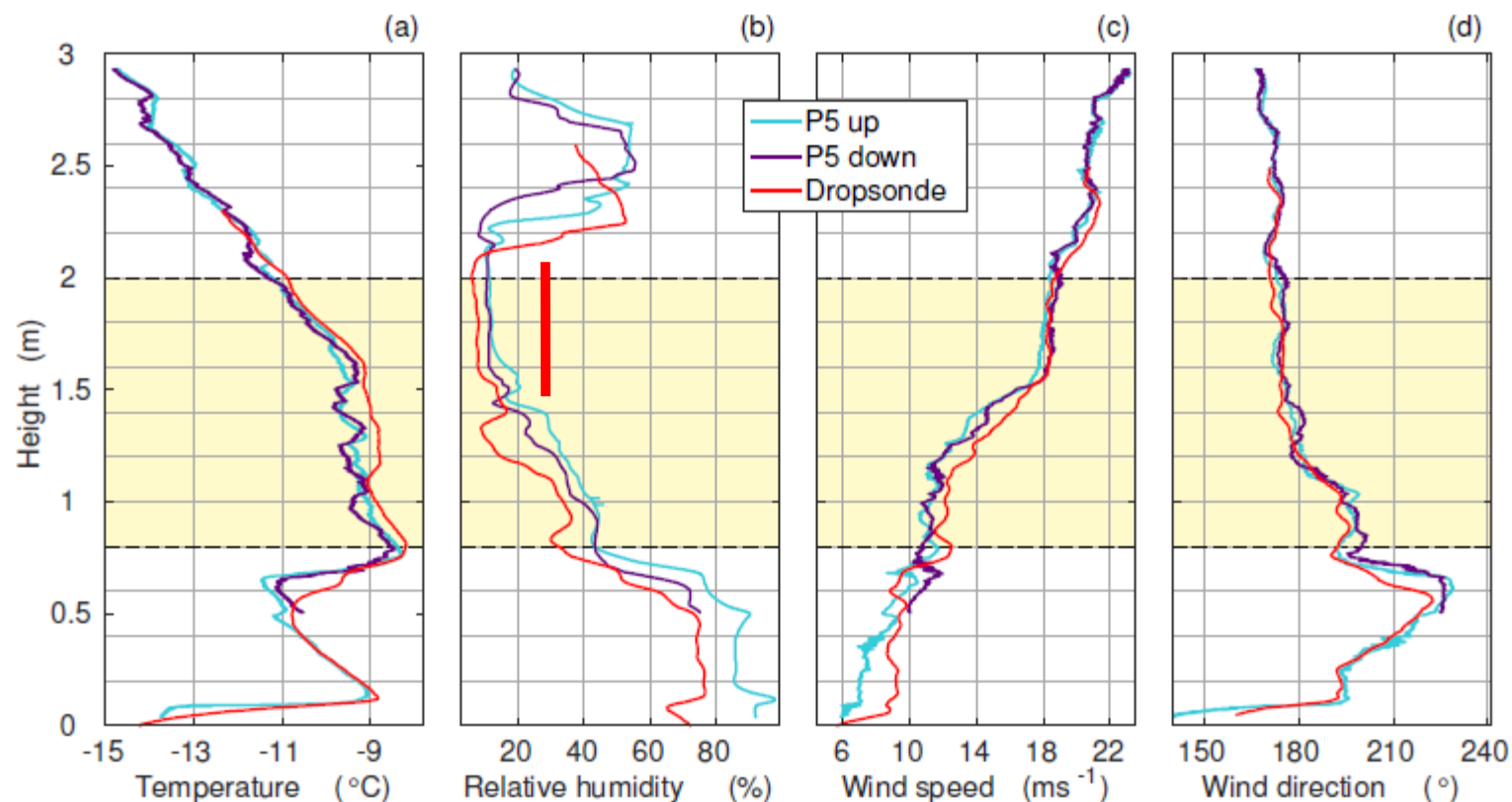
**Technical Note  
NCAR /EOL**

**Dropsonde  
Dry Bias**

**Correction necessary for  $T \ll 0^\circ \text{C}$  and small Rel. Hum.  
Not necessary for  $T$  around  $0^\circ \text{C}$  and warmer....**



# Campaign STABLE 2013, comparison aircraft-dropsonde



**Figure 4.2:** Vertical profiles of (a) temperature, (b) relative humidity, (c) wind speed, and (d) wind direction from up- and downward aircraft profiles and the corresponding dropsonde on 20 March 2013. The shaded area denotes the values used for the calculation of differences in Table 4.1