

Weather briefing **ACLOUD**

From Sun 18 June 2017
for Mon 19 June 2017
and next three days

Summary

Low pressure system brings light precipitations on western part of Svalbard moving toward SE.

Winds over northern and western part of the Svalbard are variable and up to 5kt. At higher levels they become more NW over northern part of Spitsbergen and SW over Longyearbyen and go up to 25 kt.

Over the whole Spitsbergen during the day low level clouds with patchy structure are present while mid level clouds cover middle part of Spitsbergen early in the morning.

Observations

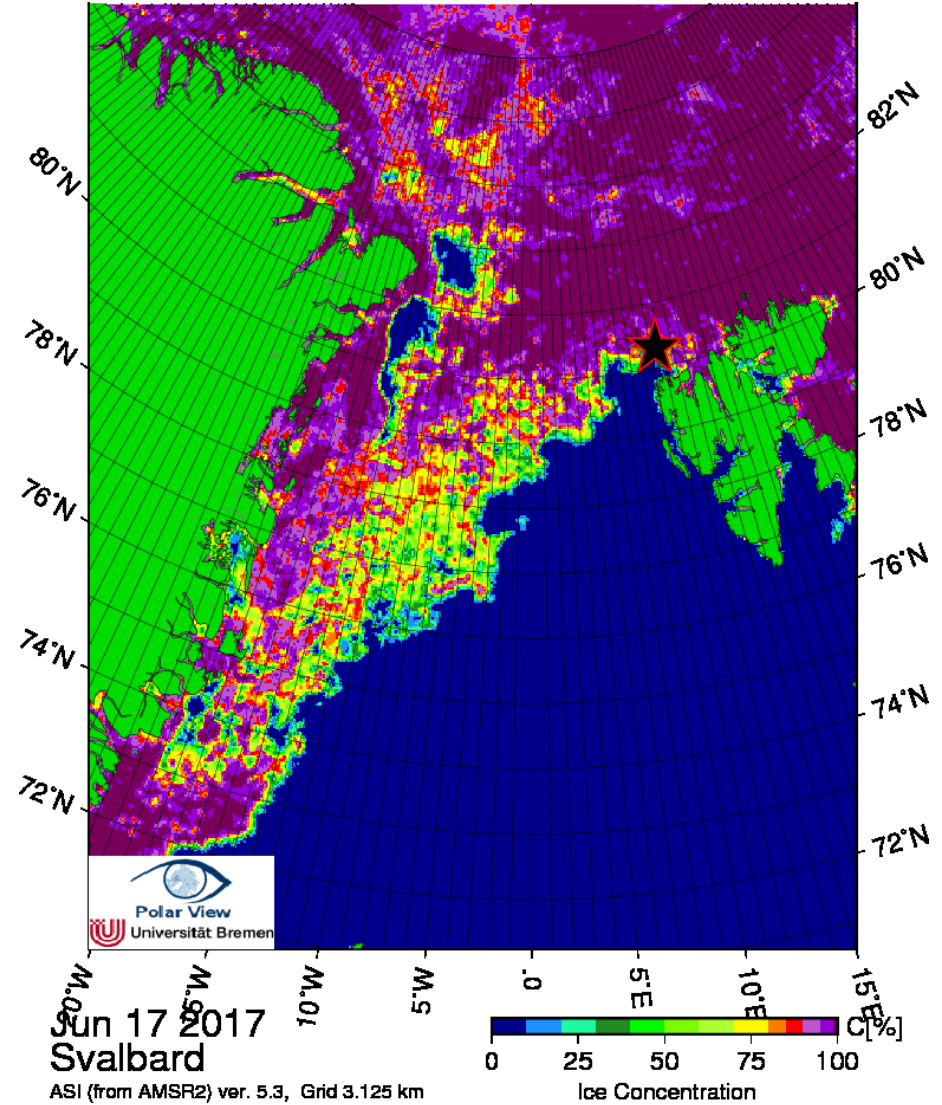
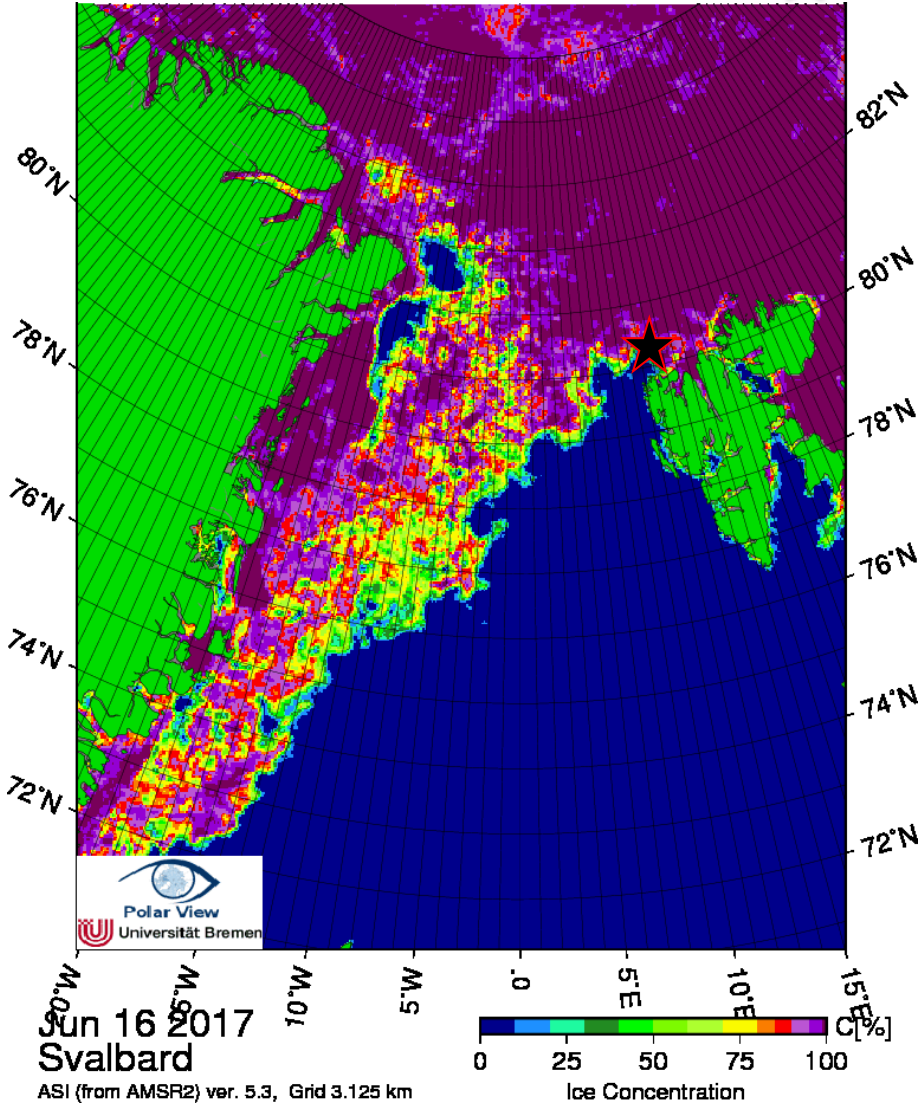
Fri 18 June 2017

Sea ice image

Jun 16

★ Polarstern

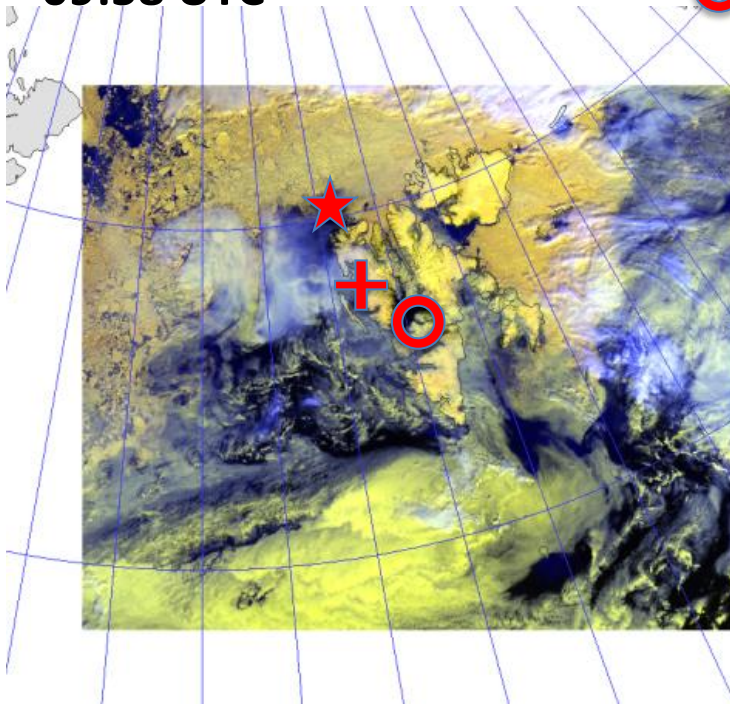
Jun 17



Satellite image

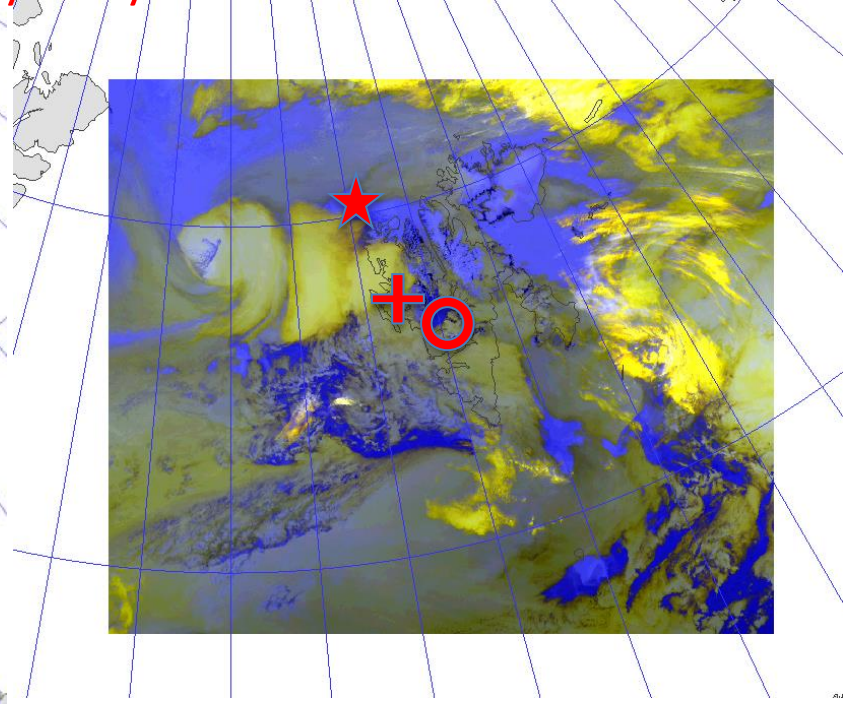
Jun 18
09:58 UTC

- ★ Polarstern
- + Ny-Ålesund
- Longyearbyen



VIS + IR

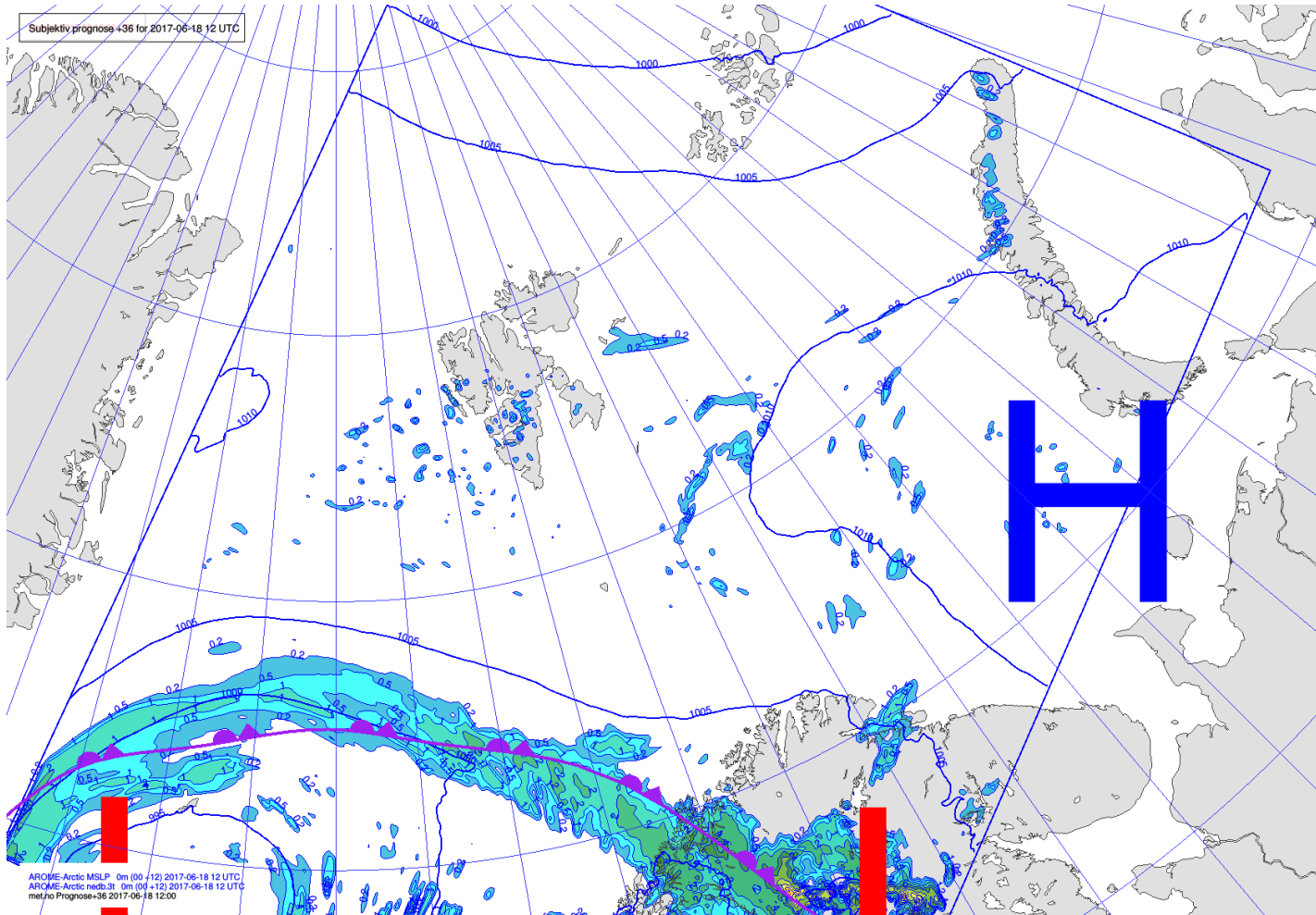
NOAA-19



IR 5+4+3

MSLP/ Fronts / Precipitation

Jun 18
12 UTC



AROME-
Arctic

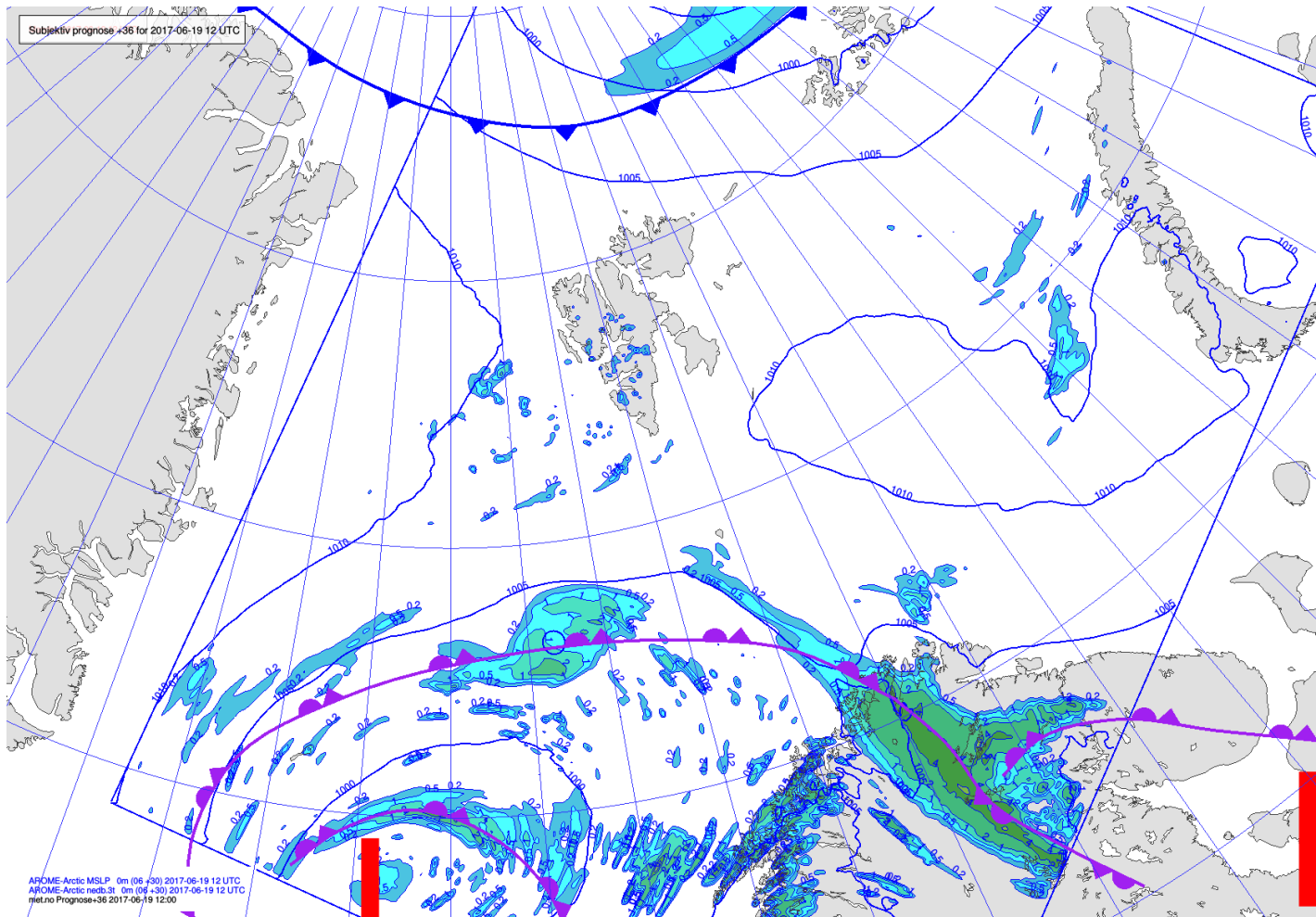
METAR and TAF

- Longyearbyen/Longyear (ENSB):
 - METAR 181120Z 27007KT 9999 FEW020 SCT045 05/M00 Q1007 RMK WIND 1400FT VRB02KT
 - TAF 180500Z **1806/1906** 25008KT 9999 FEW010 BKN030 TEMPO 1806/1906 BKN012
 - No SIGMET/AIRMET
- Ny-Ålesund/Hamnerabben (ENAS):
 - METAR 181100Z 1812/1912 25008KT 9999 FEW015 BKN040 PROB40 TEMPO 1812/1909 BKN012

Forecast
Sat 19 June 2017

MSLP / Fronts / Precipitation

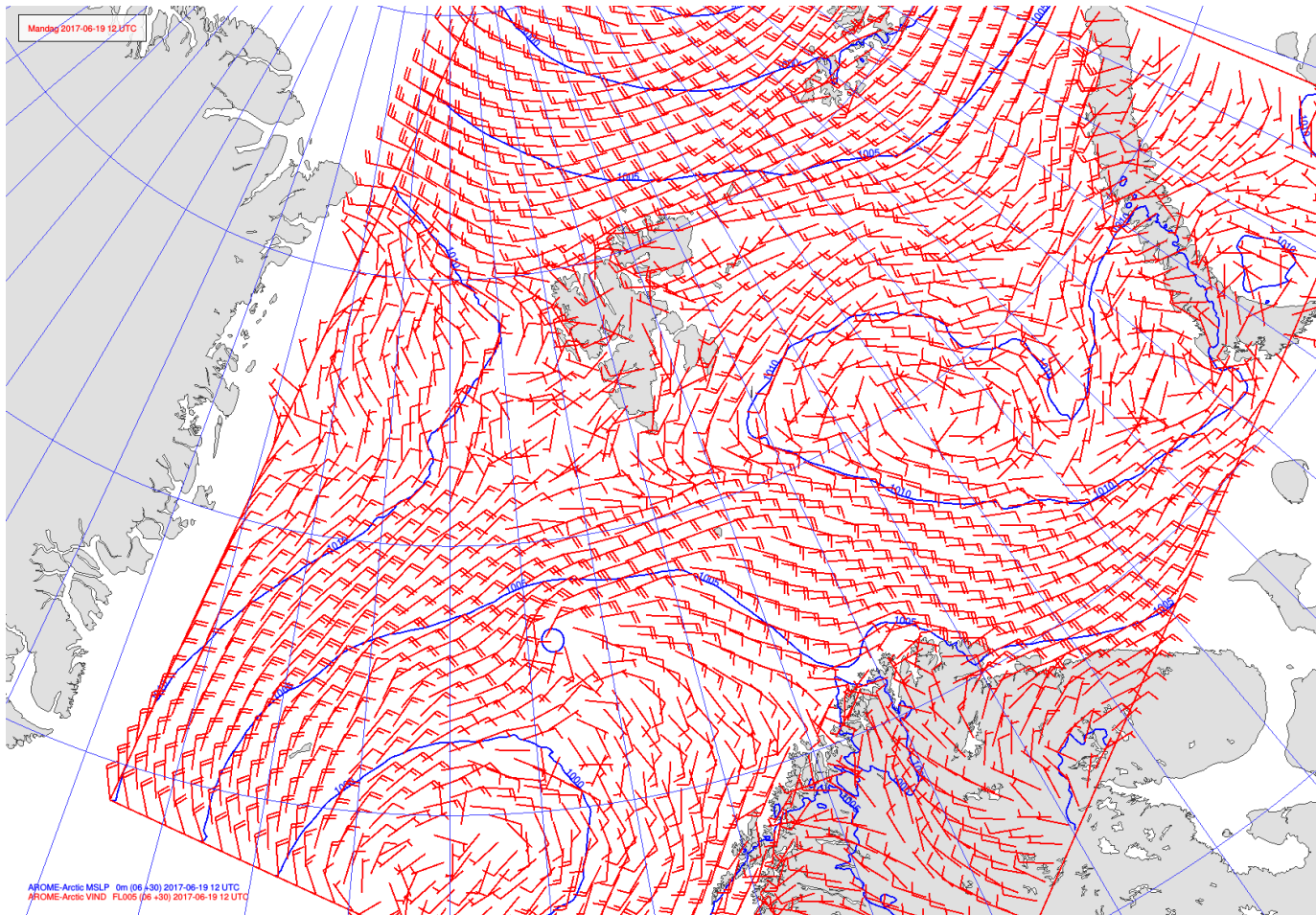
Jun 19
12 UTC



AROME-
Arctic

MSLP / V_{FL005}

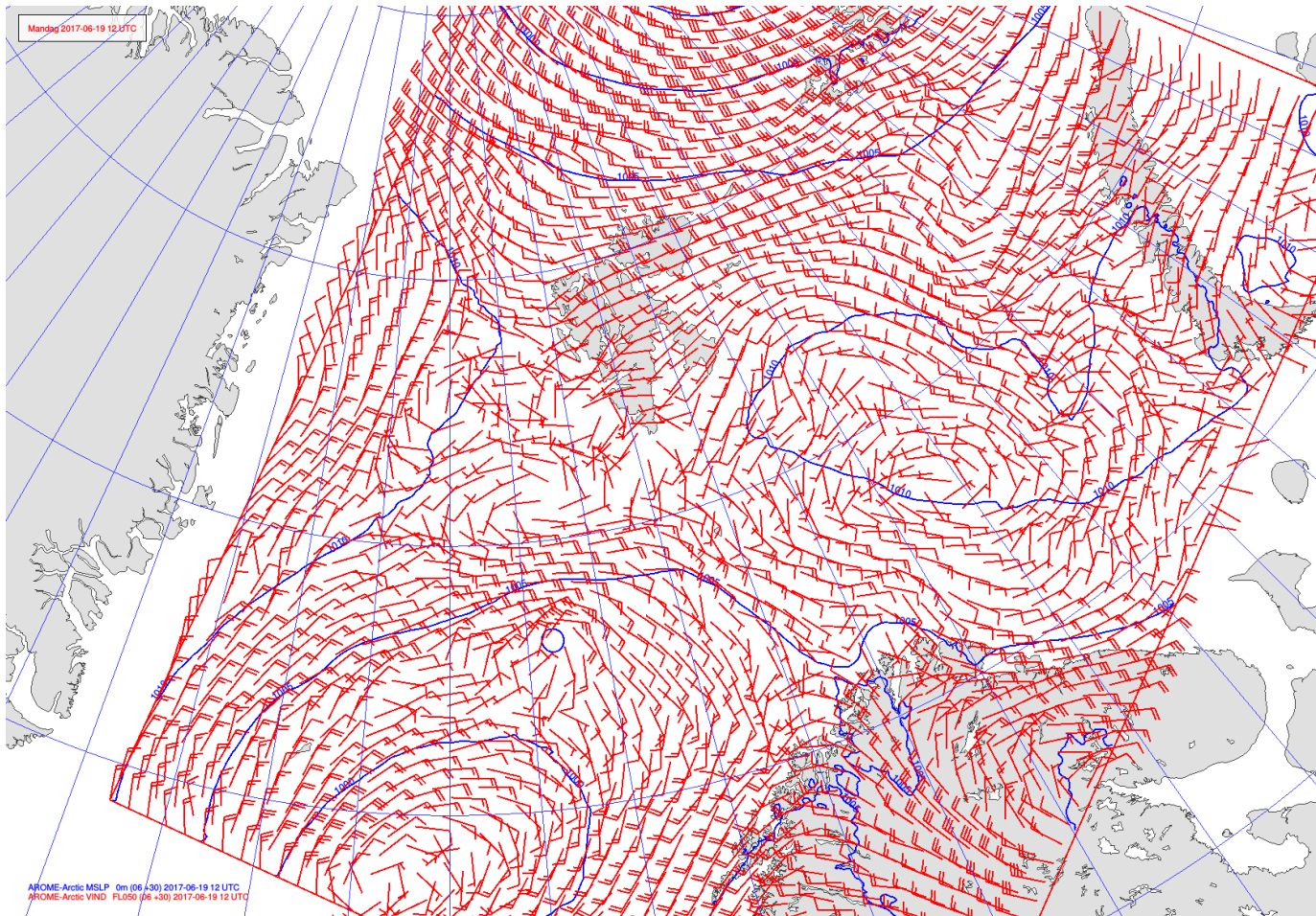
Jun 19
12 UTC



AROME-
Arctic

MSLP / V_{FL050}

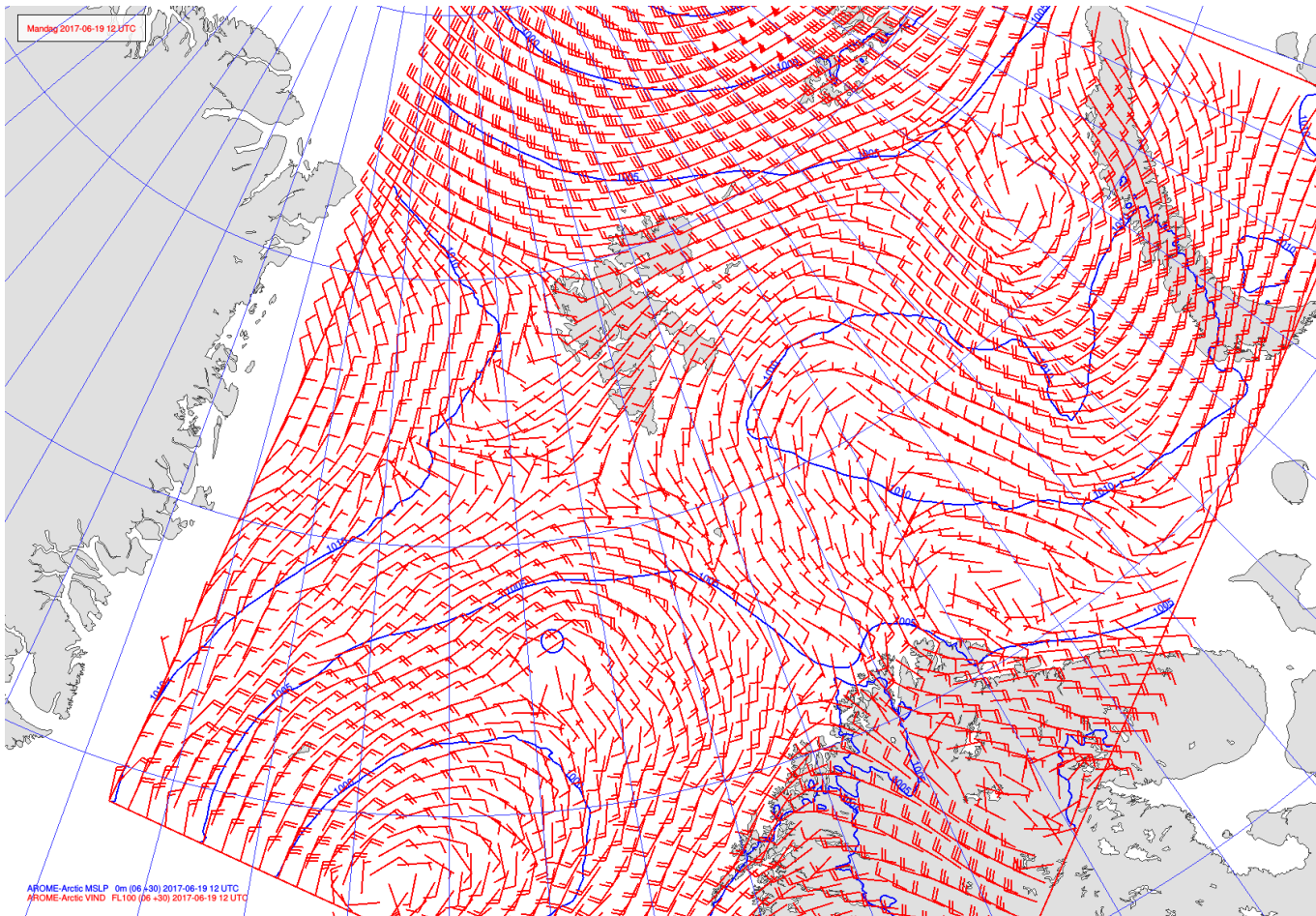
Jun 19
12 UTC



AROME-
Arctic

MSLP / V_{FL100}

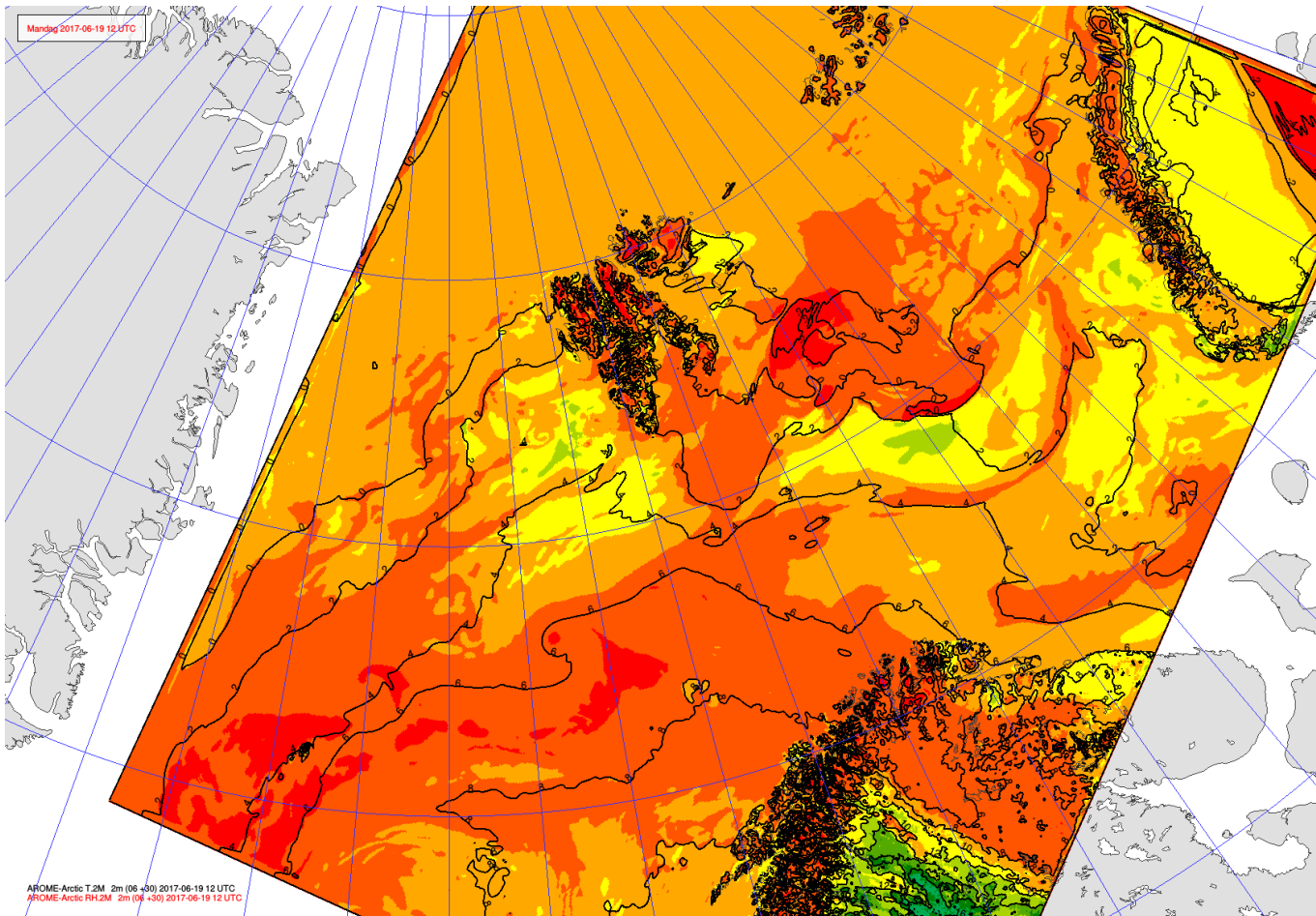
Jun 19
12 UTC



AROME-
Arctic

T_{2m} / RH_{2m}

Jun 19
12 UTC



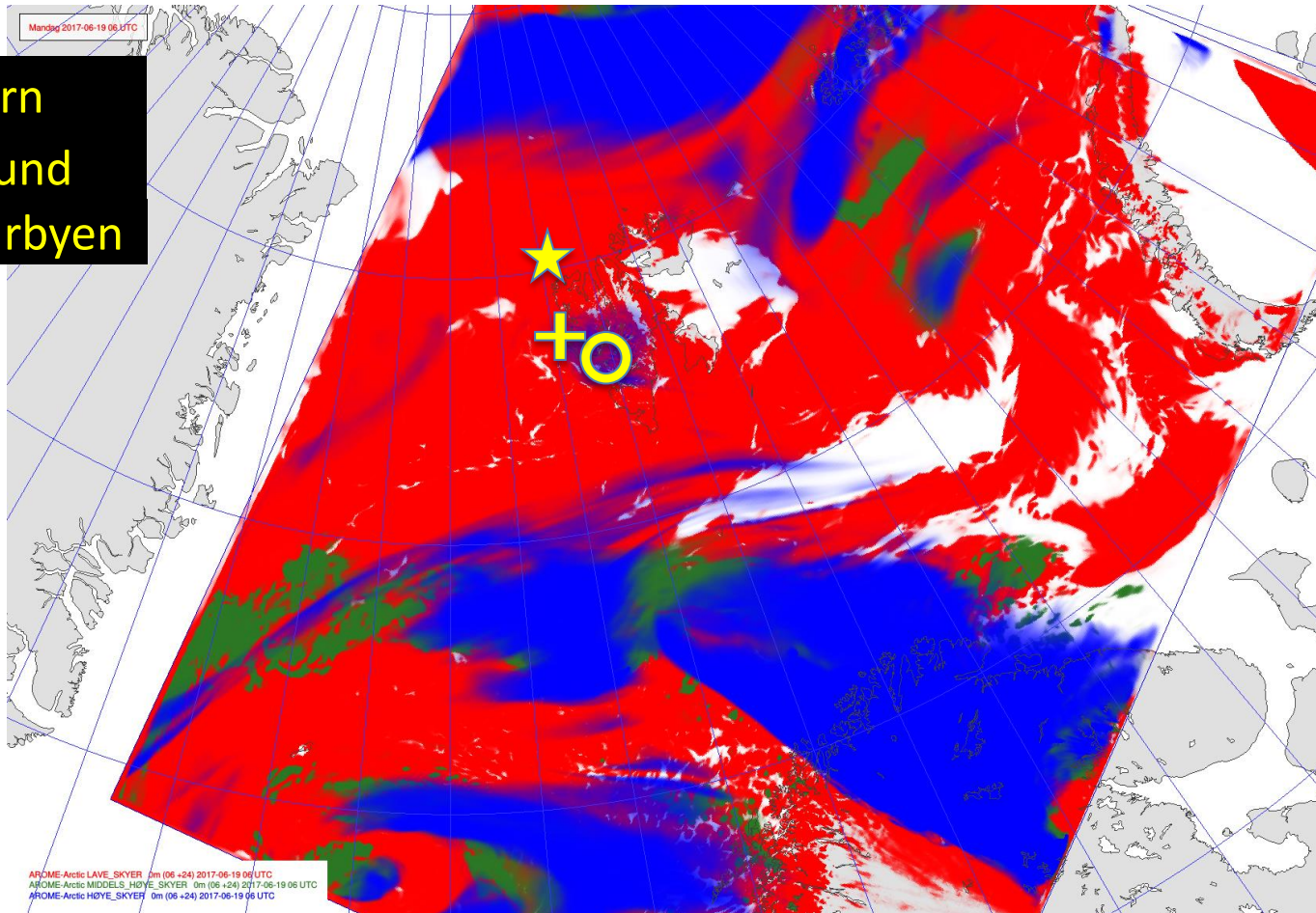
AROME-
Arctic

Cloud cover

Jun 19
06 UTC

Low / Medium / High

- ★ Polarstern
- + Ny-Ålesund
- Longyearbyen



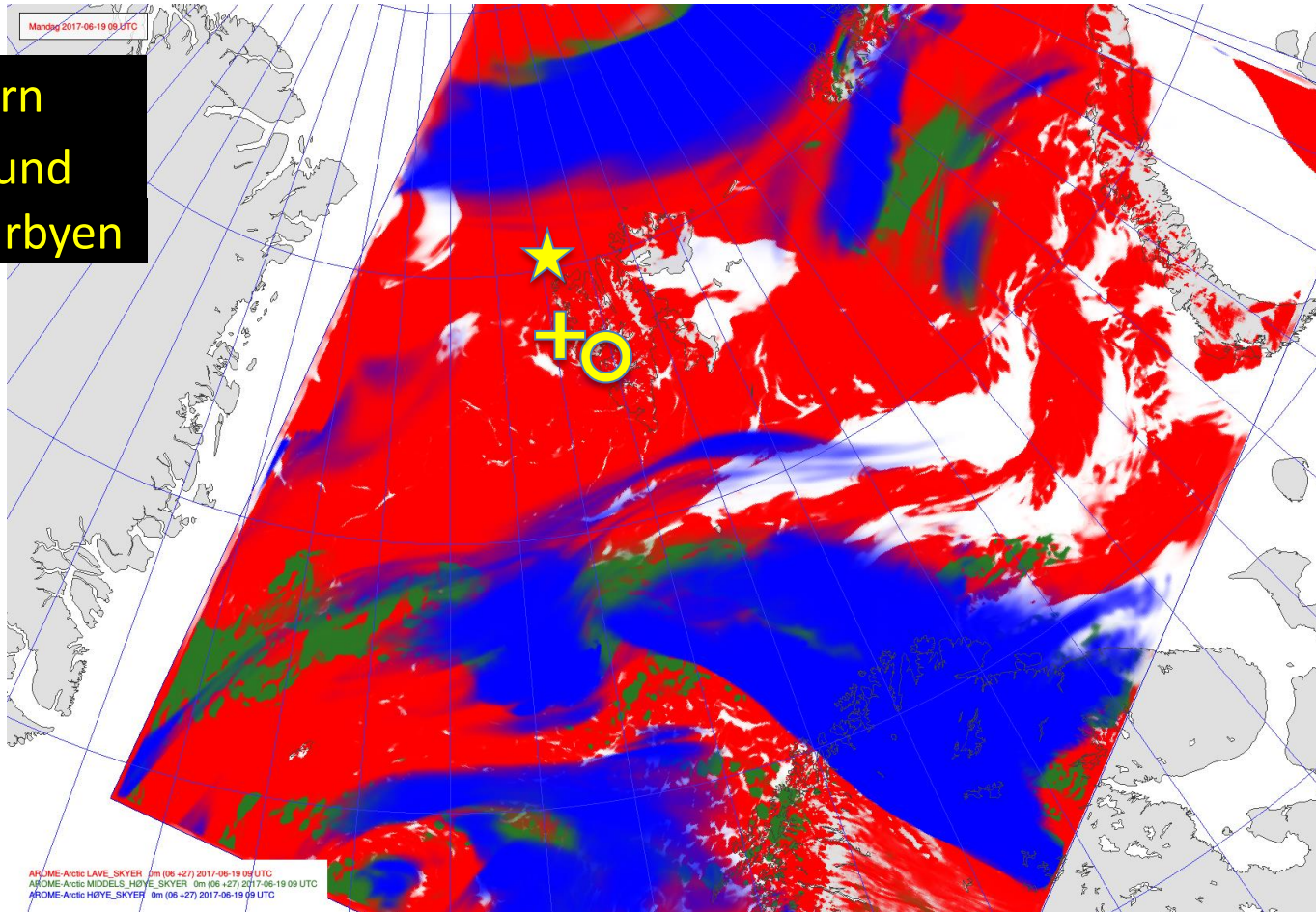
AROME-
Arctic

Cloud cover

Jun 19
09 UTC

Low / Medium / High

- ★ Polarstern
- + Ny-Ålesund
- Longyearbyen



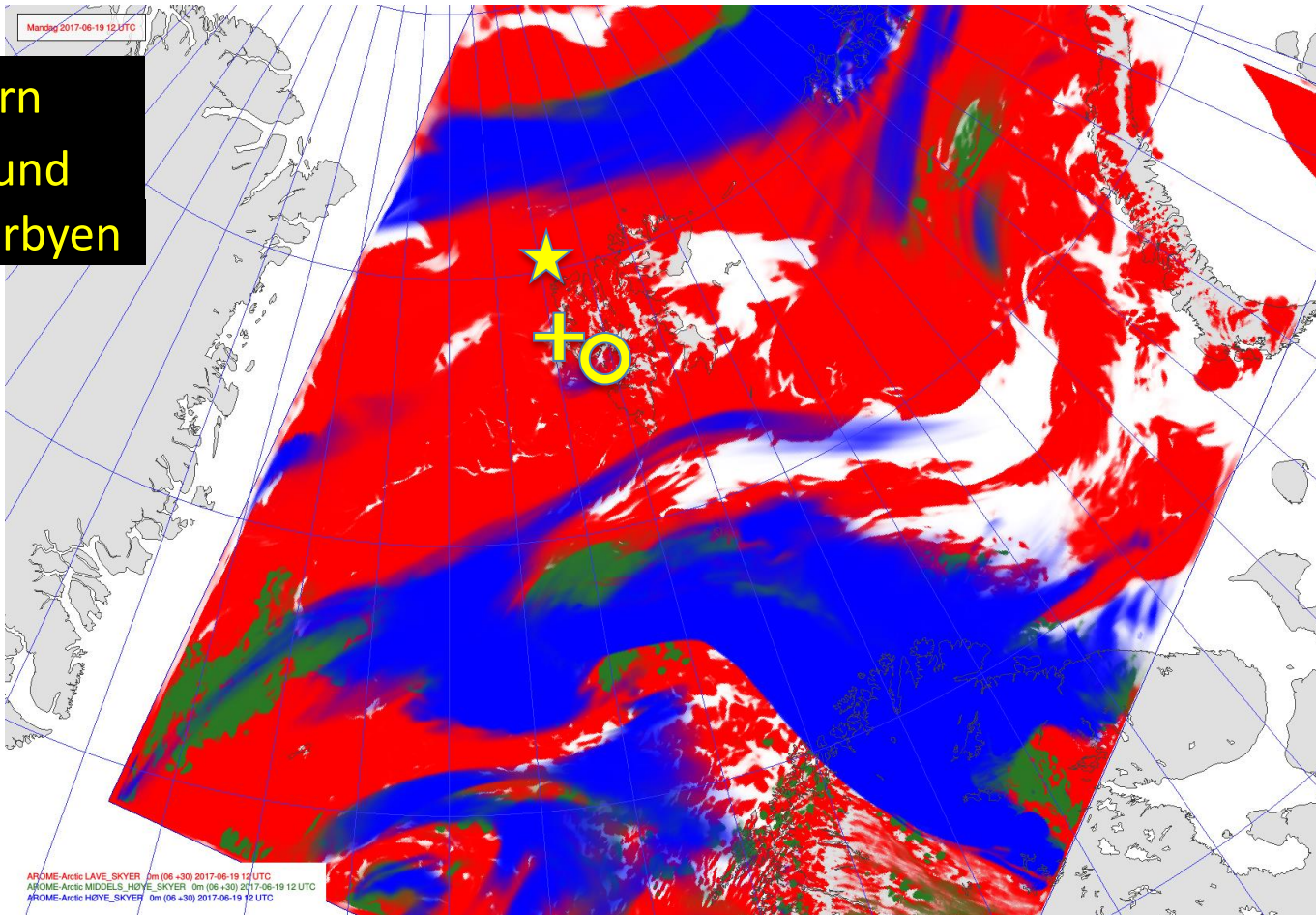
AROME-
Arctic

Cloud cover

Jun 19
12 UTC

Low / Medium / High

- ★ Polarstern
- + Ny-Ålesund
- Longyearbyen



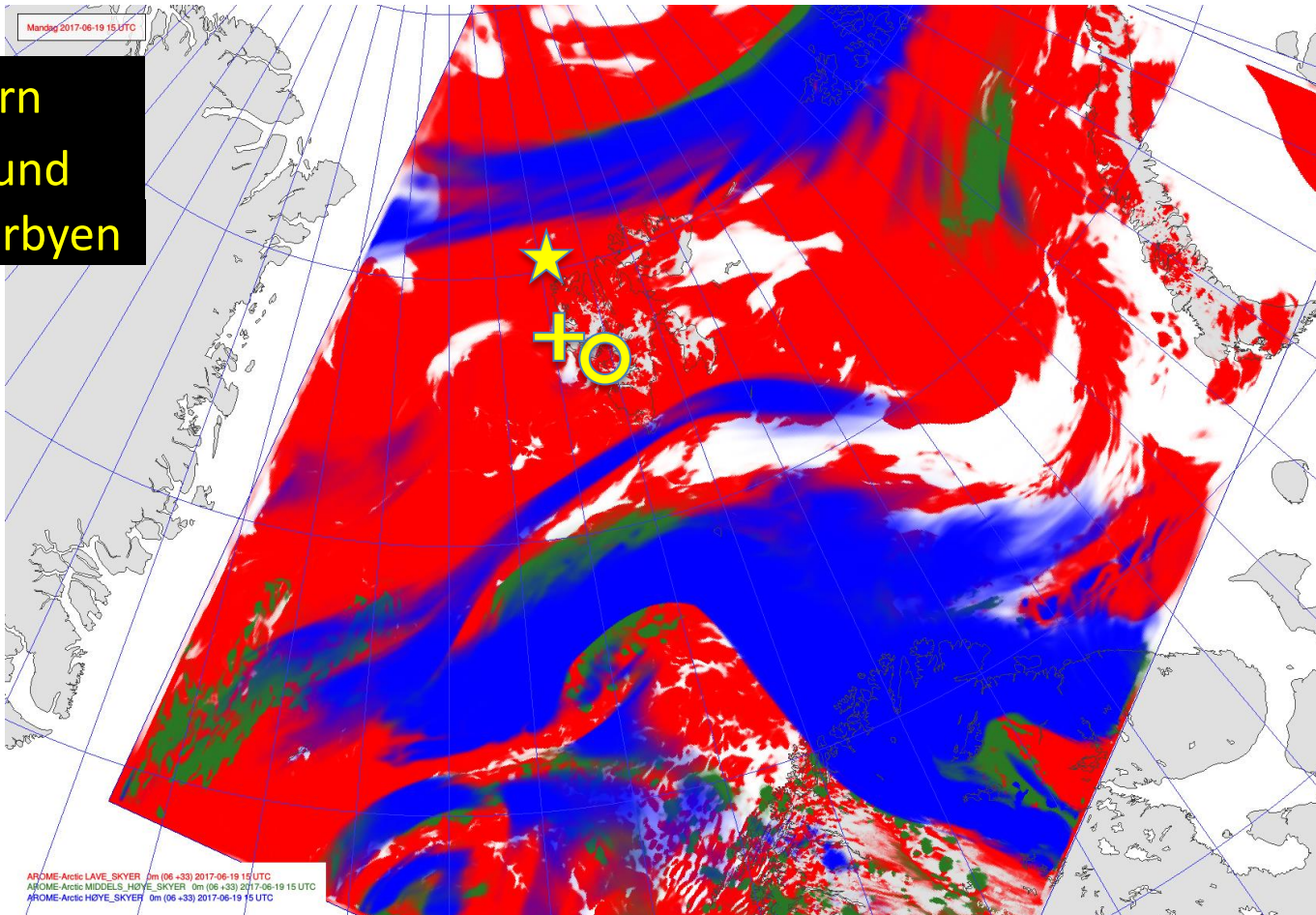
AROME-
Arctic

Cloud cover

Jun 19
15 UTC

Low / Medium / High

- ★ Polarstern
- + Ny-Ålesund
- Longyearbyen



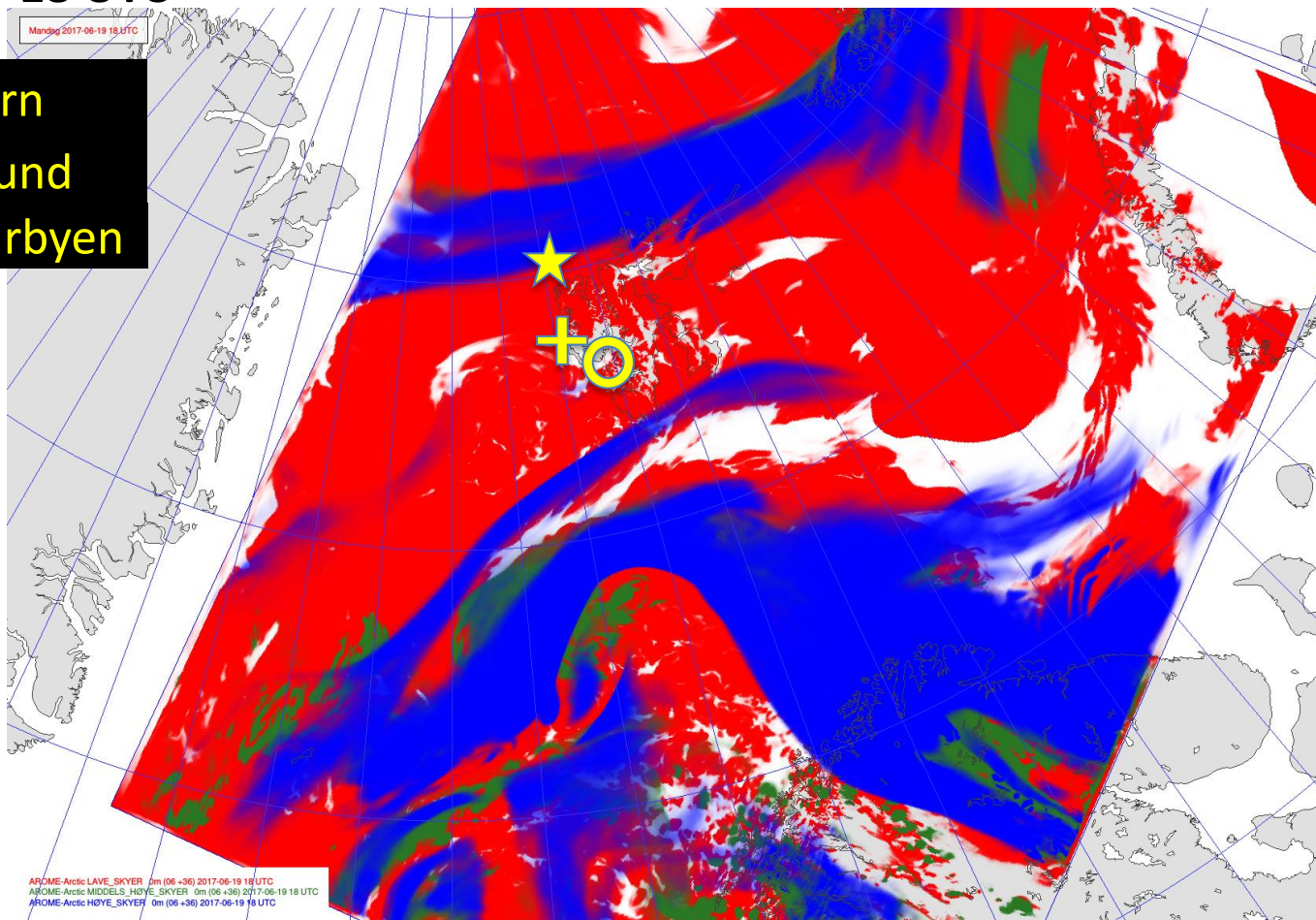
AROME-
Arctic

Cloud cover

Jun 19
18 UTC

Low / Medium / High

- ★ Polarstern
- + Ny-Ålesund
- Longyearbyen



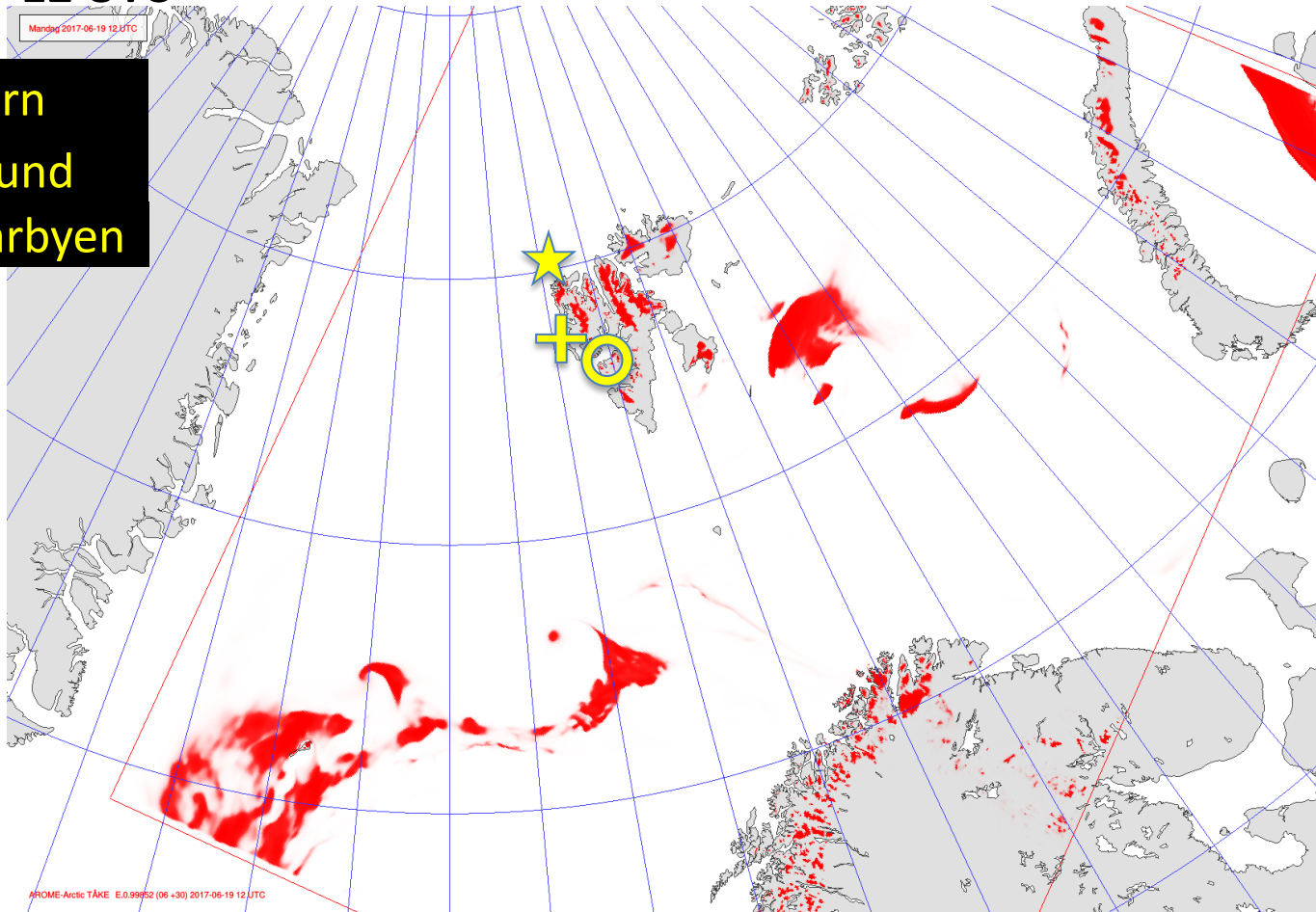
AROME-
Arctic

Fog

Jun 19
12 UTC

Low / Medium / High

- ★ Polarstern
- + Ny-Ålesund
- Longyearbyen



AROME-
Arctic

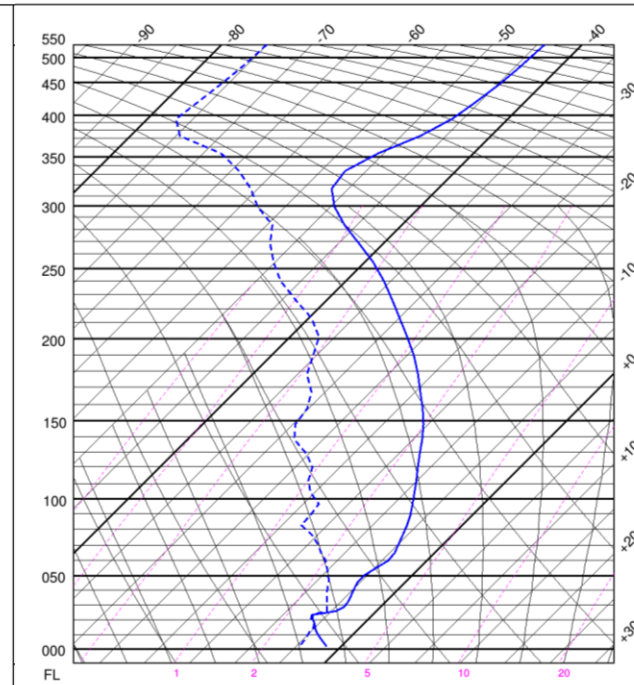
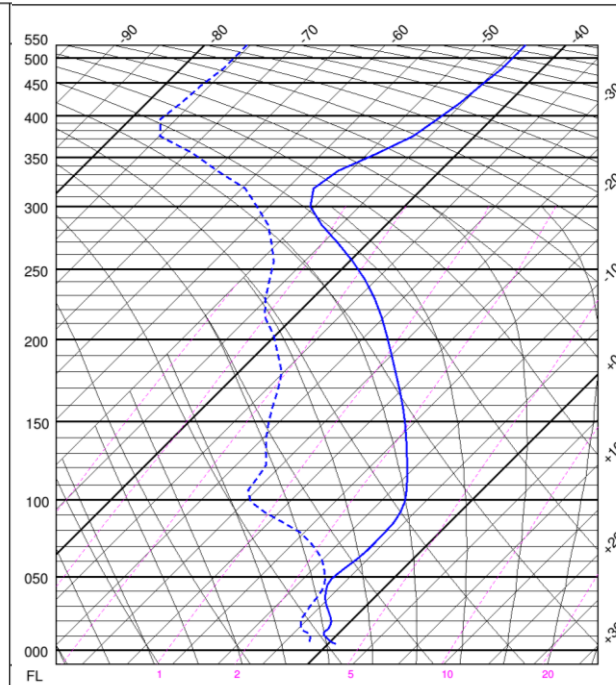
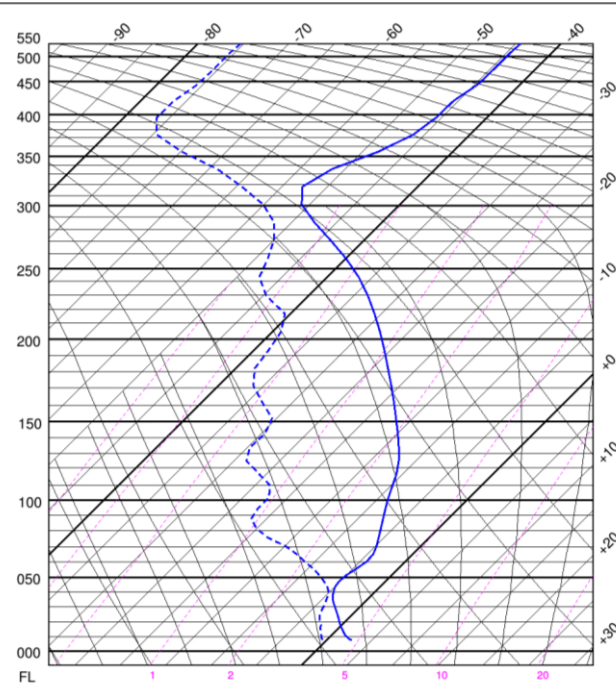
Vertical profile

Jun 19
12 UTC

Longyearbyen

Ny-Ålesund

~Polarstern



AROME-Arctic

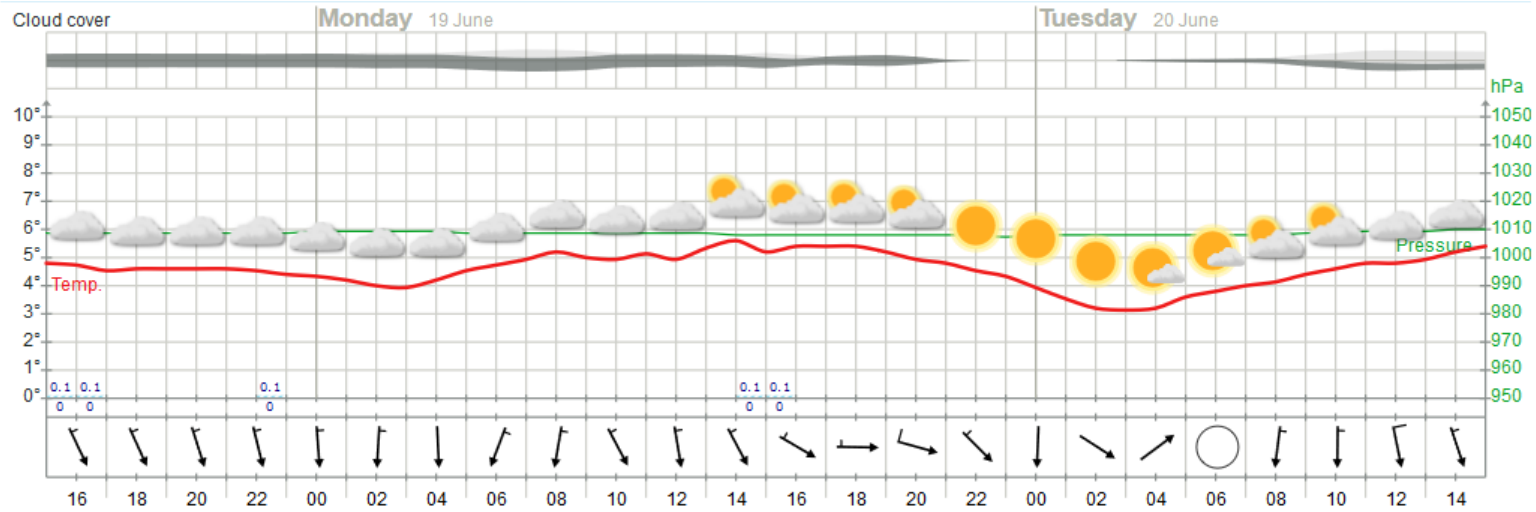
Outlook

Sun 20 – Tue 22 June 2017

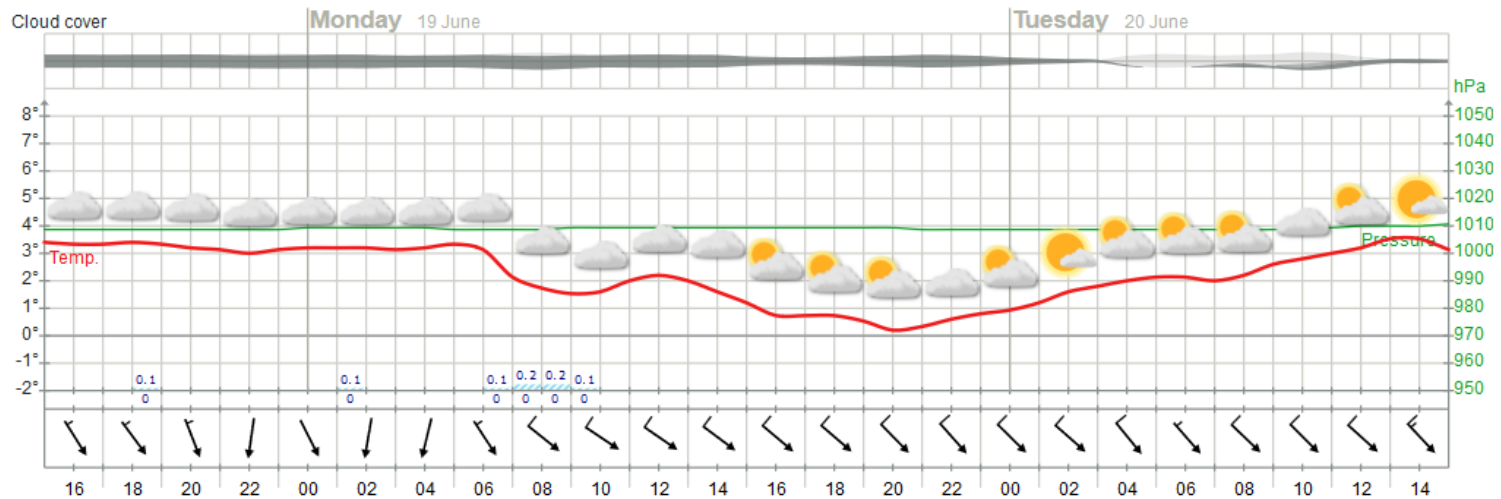
Meteogram

Jun 18-20

Longyearbyen

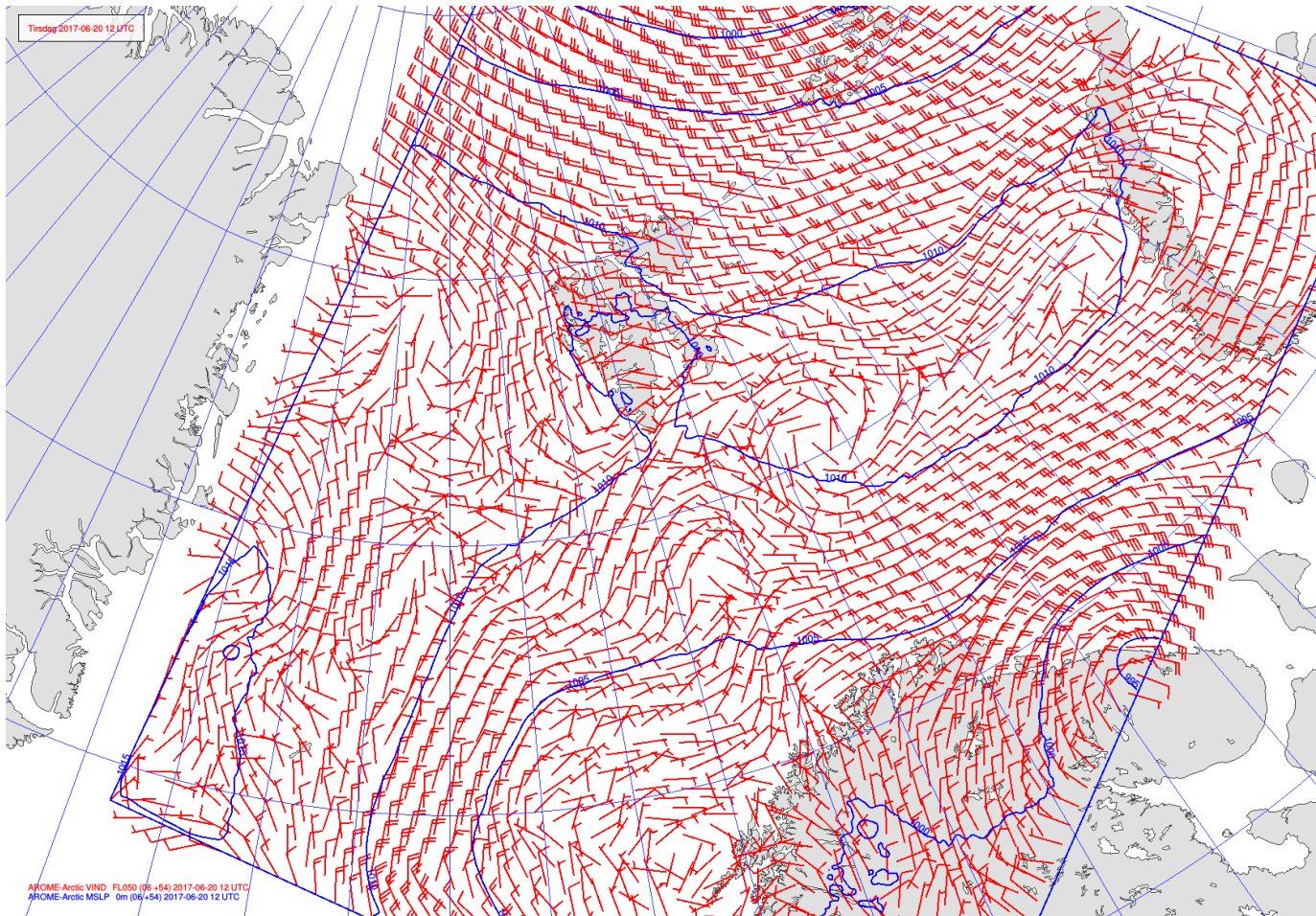


Ny-Ålesund



MSLP / V_{FL050}

Jun 20
12 UTC



AROME-
Arctic

MSLP / v_{surf}

Jun 20
12 UTC

Jun 21
12 UTC

