

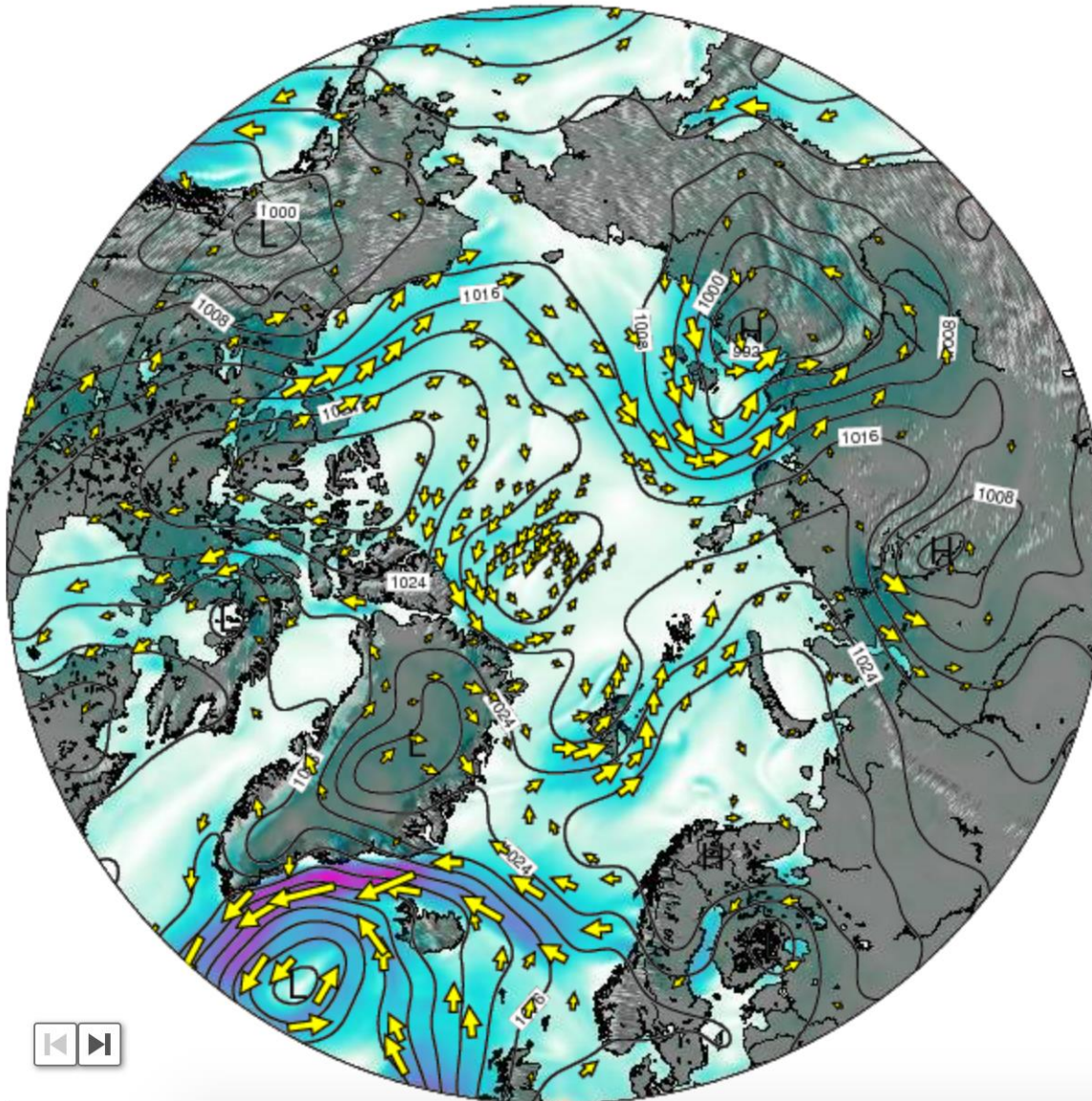
Weather briefing

ACLOUD Longyearbyen, Svalbard

Mon 15 May 2017 – **Tue 16 May** – Thu 18 May 2017

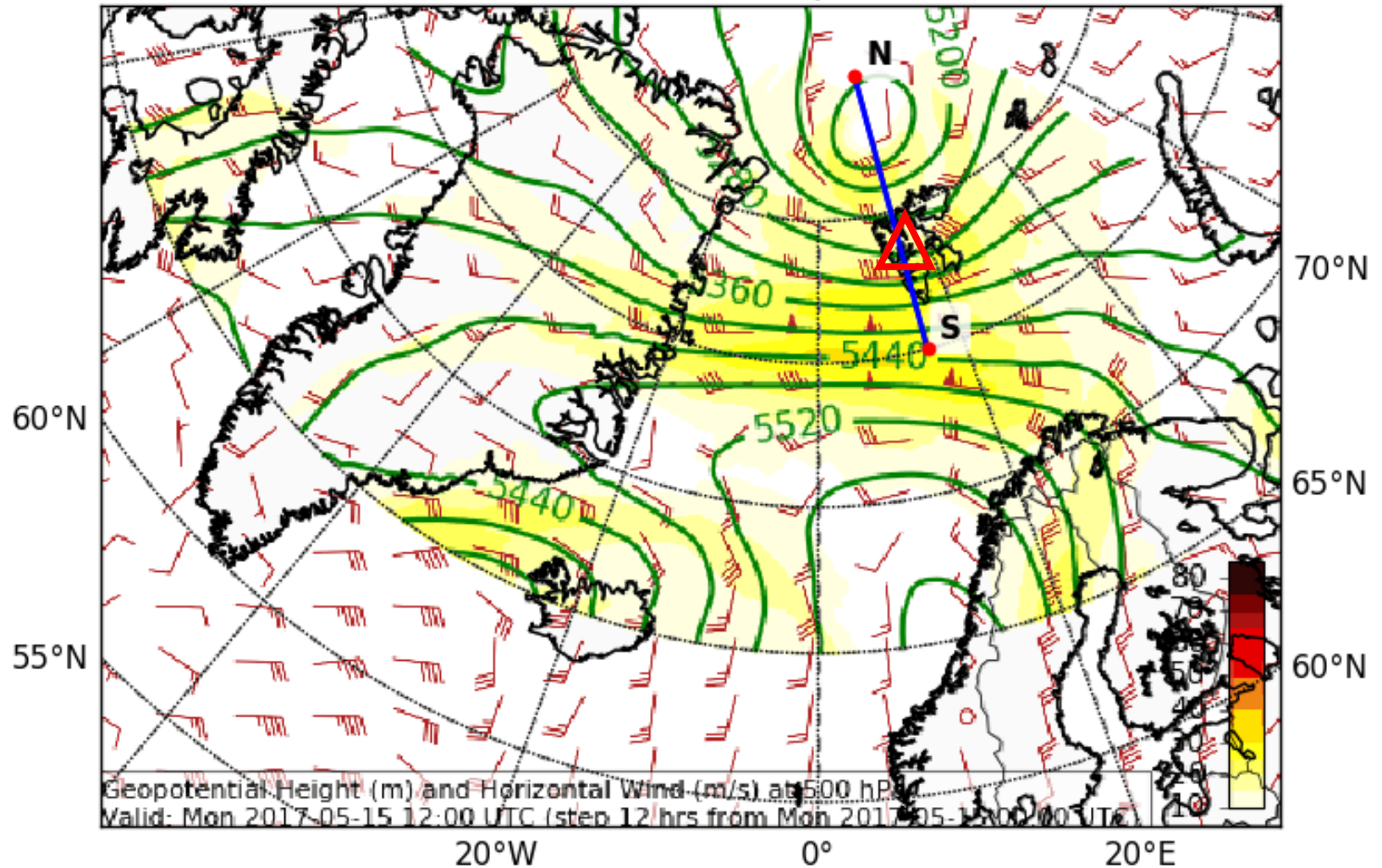
General Weather Situation 15 May 2017

Surface Wind on Monday 15 May at 12am UTC



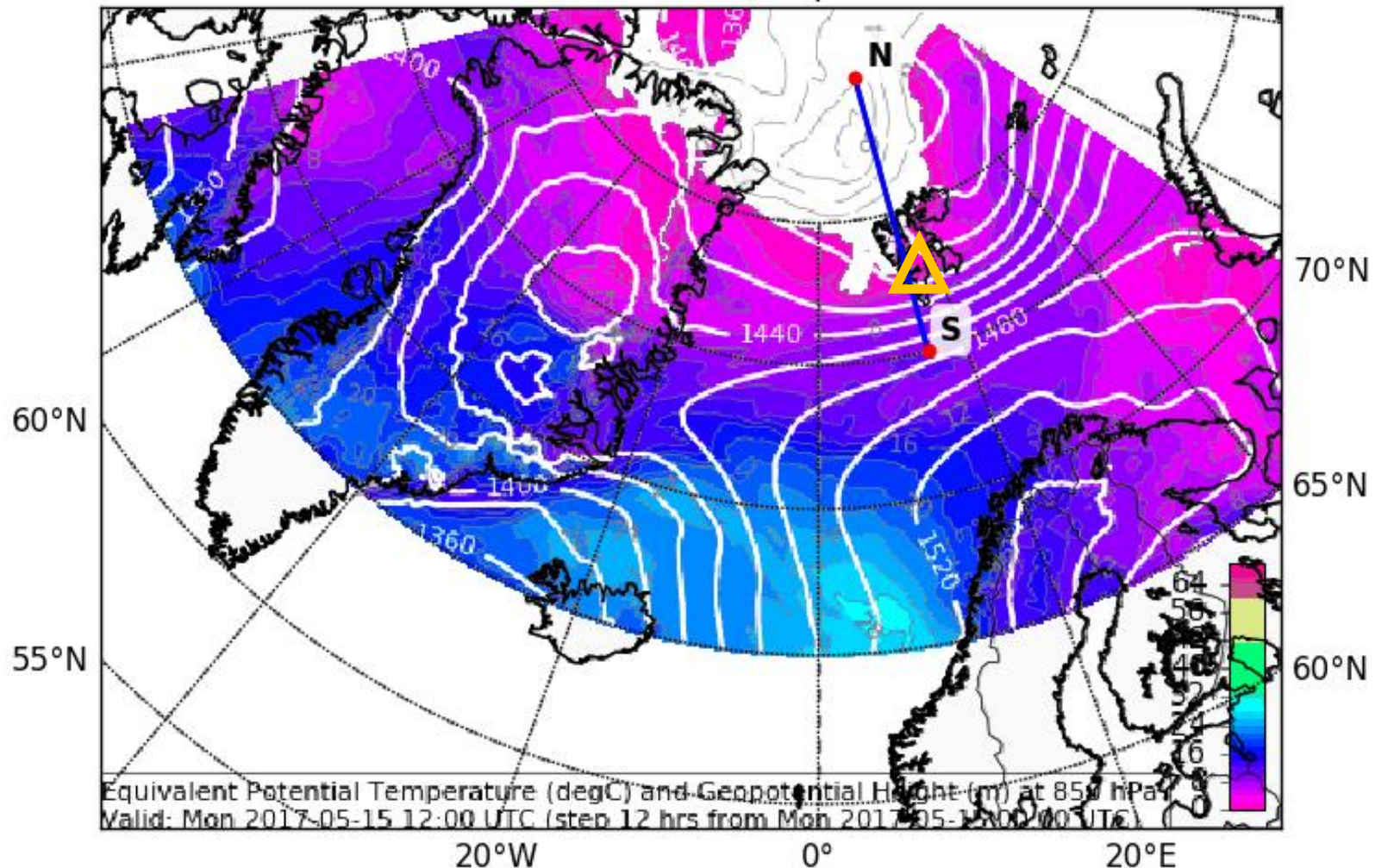
500-hPa Geopotential 15 May 2017 @ 12 UTC

Geopotential Height (m) and Horizontal Wind (m/s) (Wind Speed 10-85 m/s)
Valid: Mon 2017-05-15 12:00 UTC (step 12 hrs from Mon 2017-05-15 00:00 UTC)

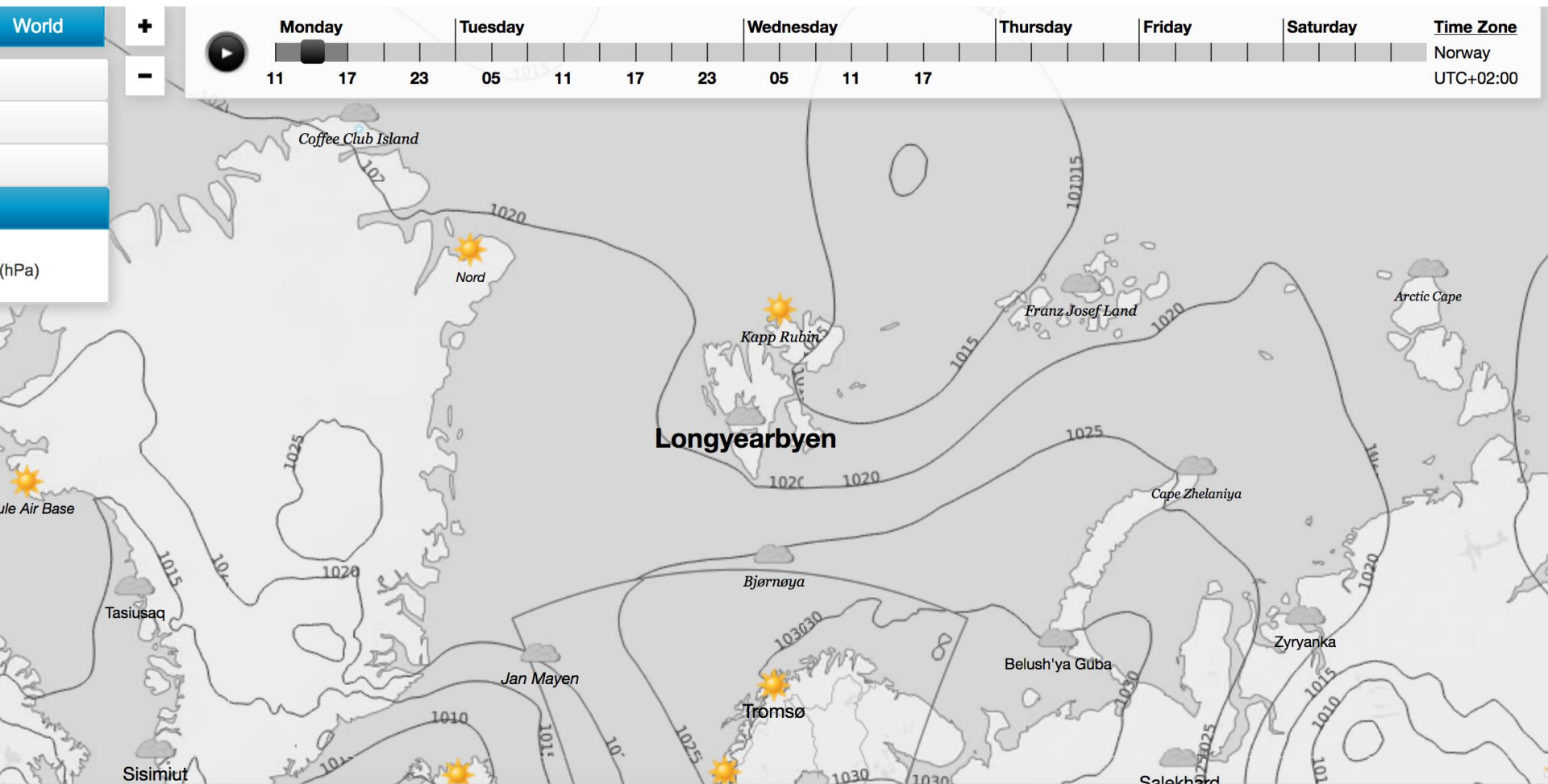


850-hPa Theta Equiv. 15 May 2017 @ 12 UTC

Equivalent Potential Temperature (degC) and Geopotential Height (m) at 850 hPa
Valid: Mon 2017-05-15 12:00 UTC (step 12 hrs from Mon 2017-05-15 00:00 UTC)

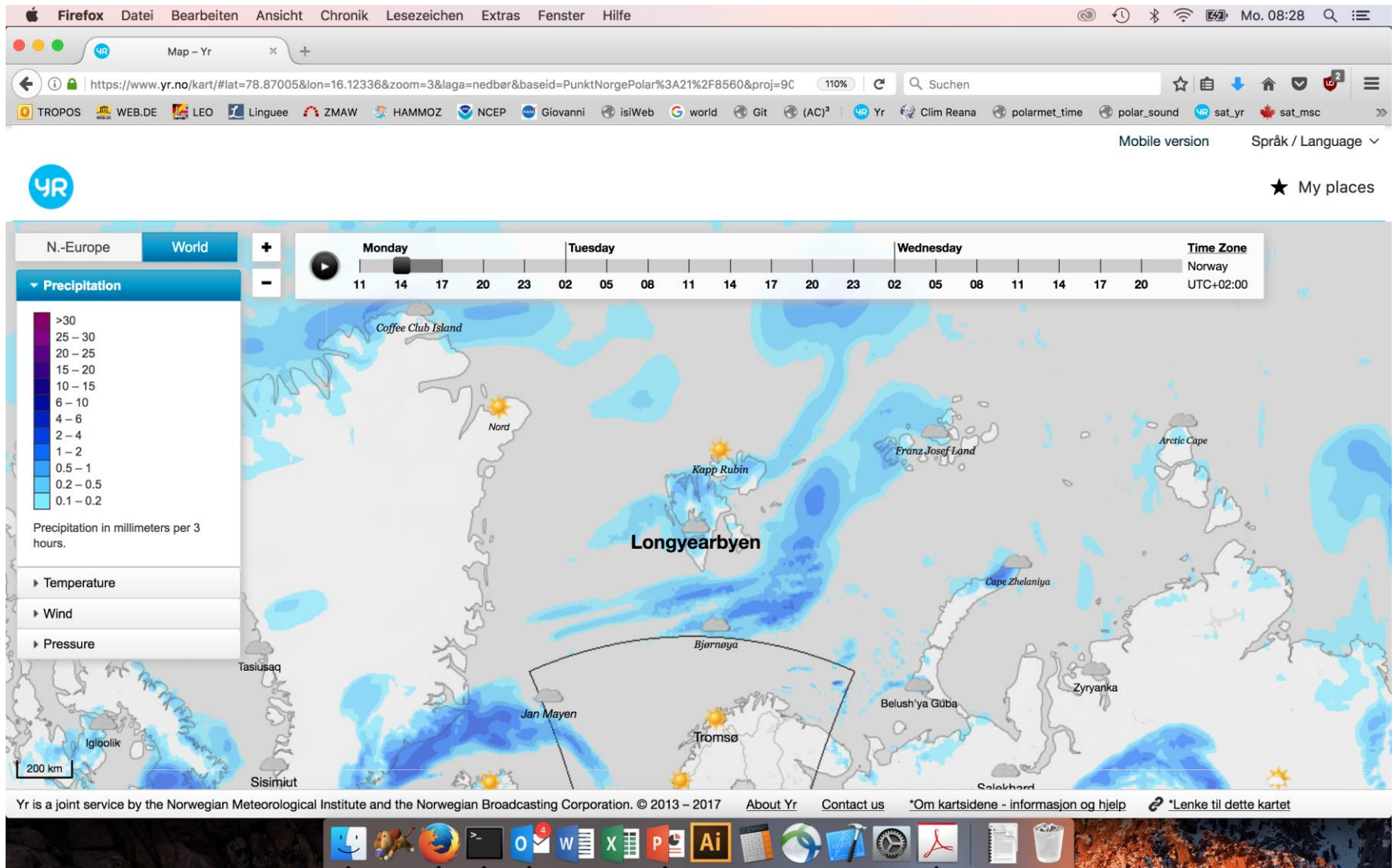


Detailed Analysis 15 May 2017 @ 12 UTC



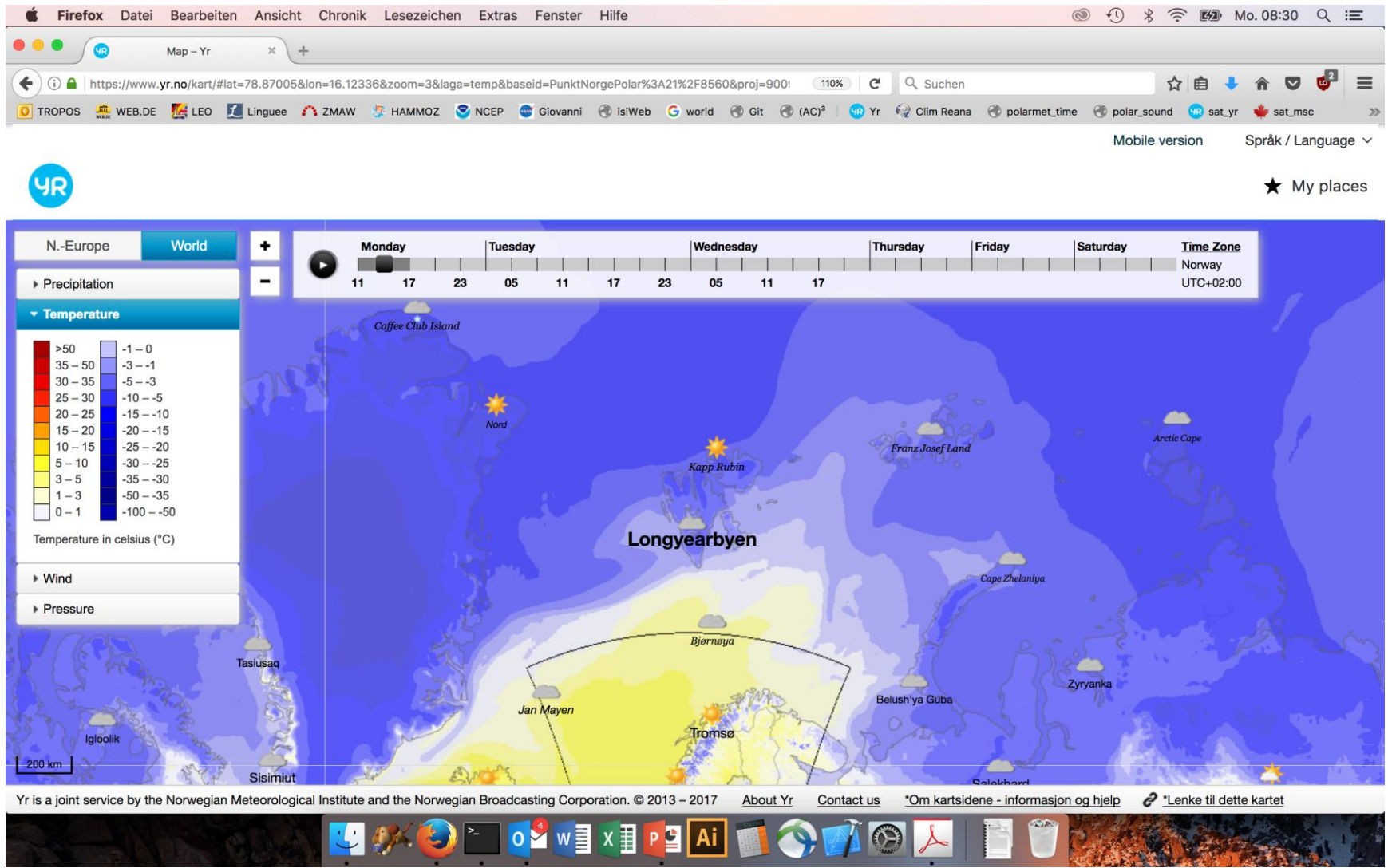
To be replaced by NMI plots during campaign

Precipitation 15 May 2017 12 UTC



To be replaced by NMI plots during campaign

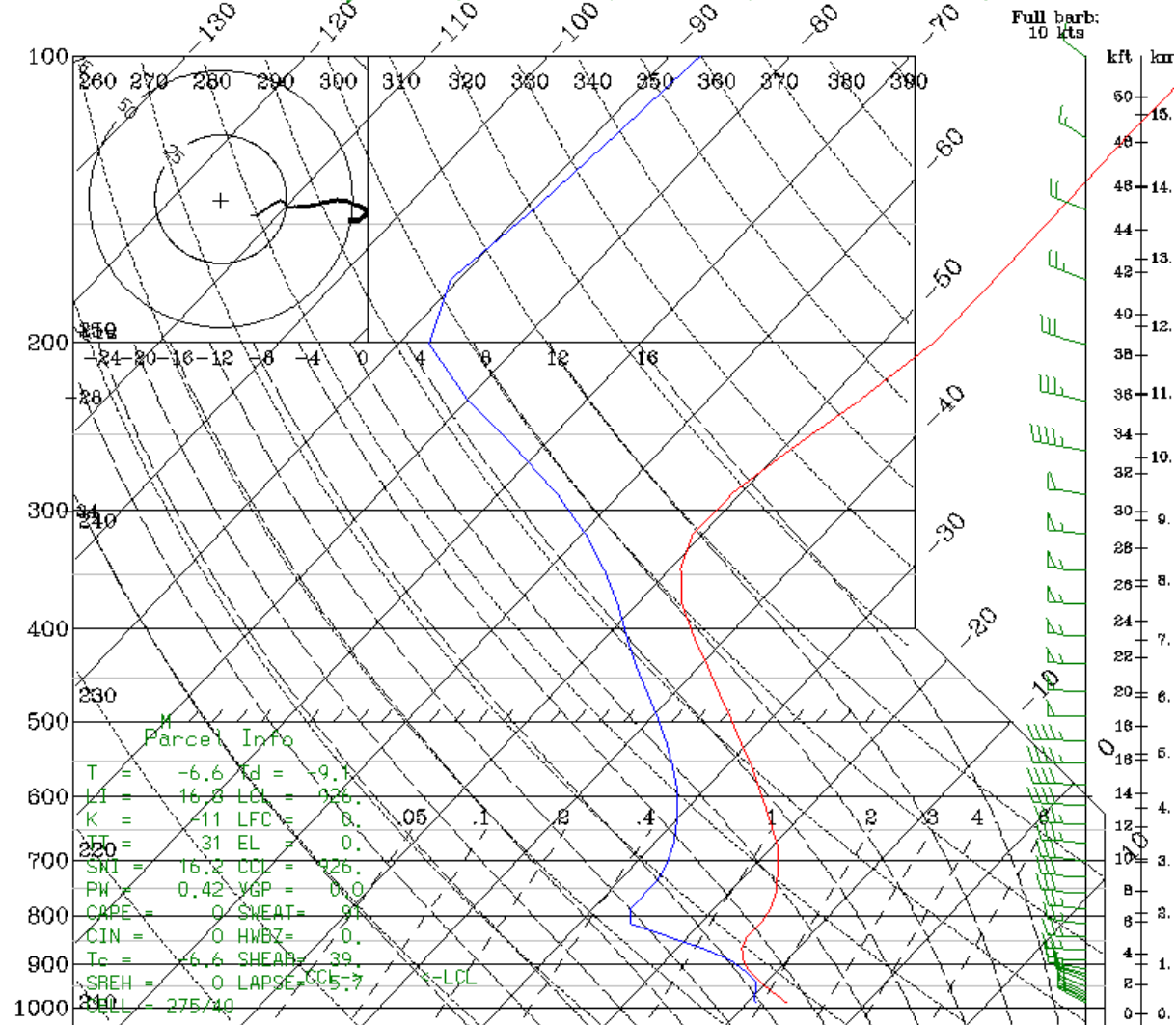
Surface Temperature 15 May 2017 12 UTC



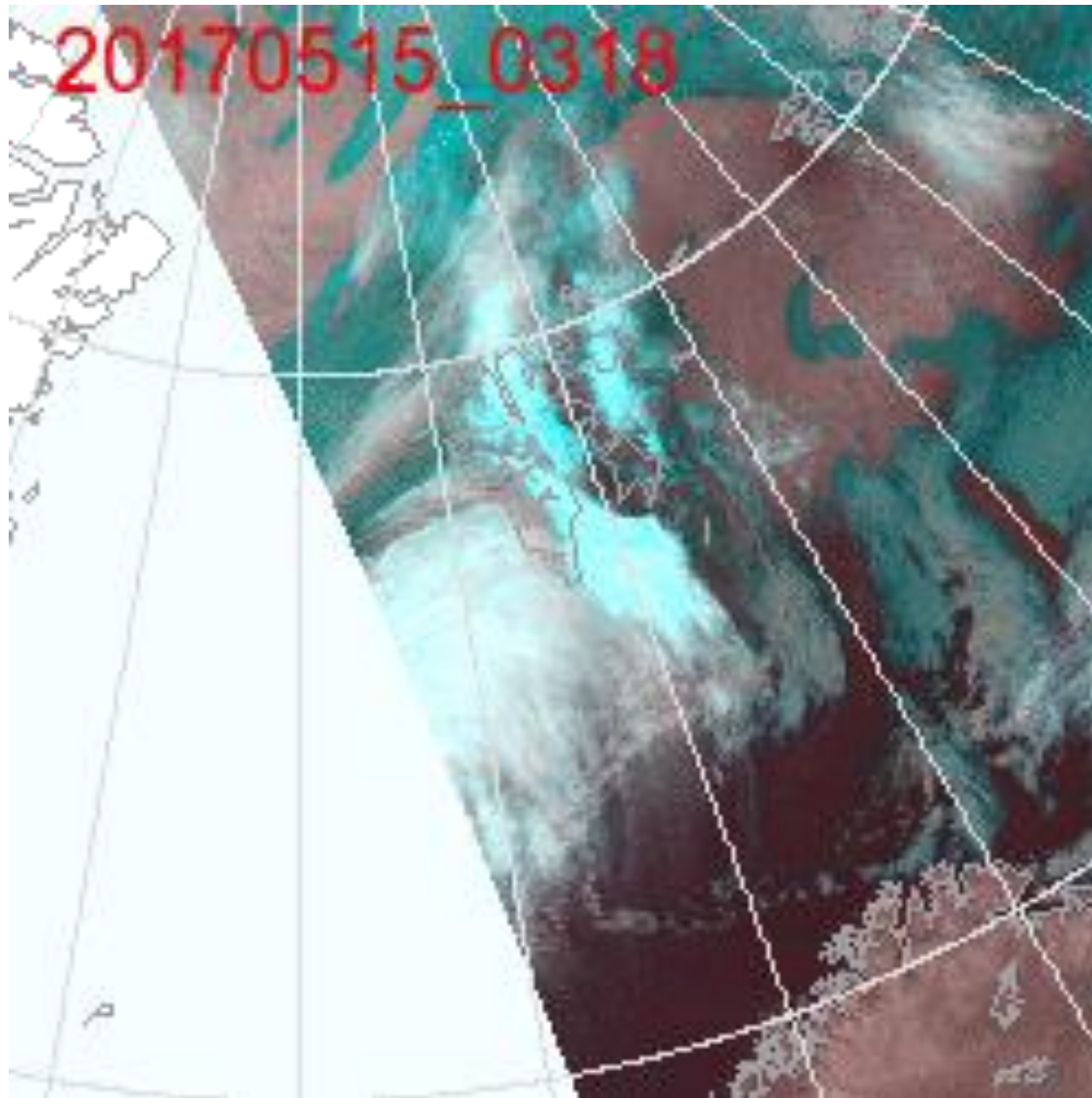
To be replaced by NMI plots during campaign

Sounding Longyearbyen 15 May 2017 @ 12 UTC

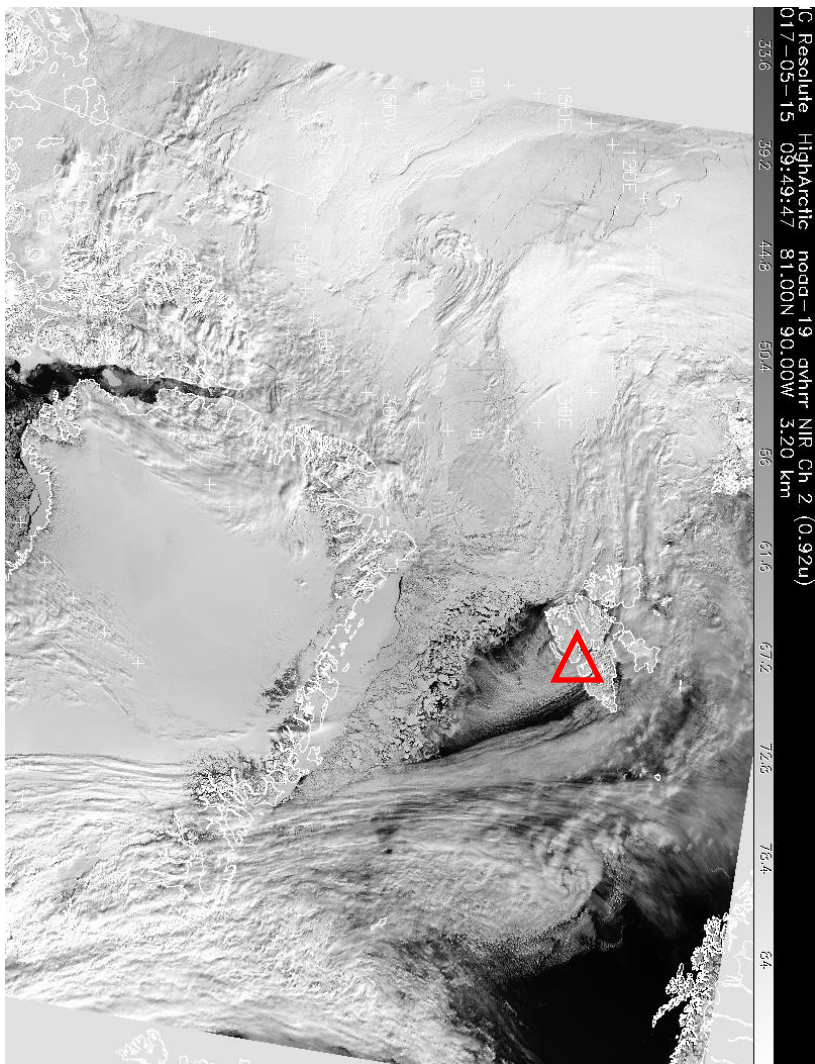
Arctic NWP
Fest: 36.00 h
Valid: 1200 UTC Mon 15 May 17 (0800 EDT Mon 15 May 17)
Init: 0000 UTC Sun 14 May 17
Temperature x,y=232.81,271.93 lat,lon= 78.25, 15.47 stn=ENSB, 1008
Dewpoint temperature x,y=232.81,271.93 lat,lon= 78.25, 15.47 stn=ENSB, 1008
Horizontal wind vectors x,y=232.81,271.93 lat,lon= 78.25, 15.47 stn=ENSB, 1008



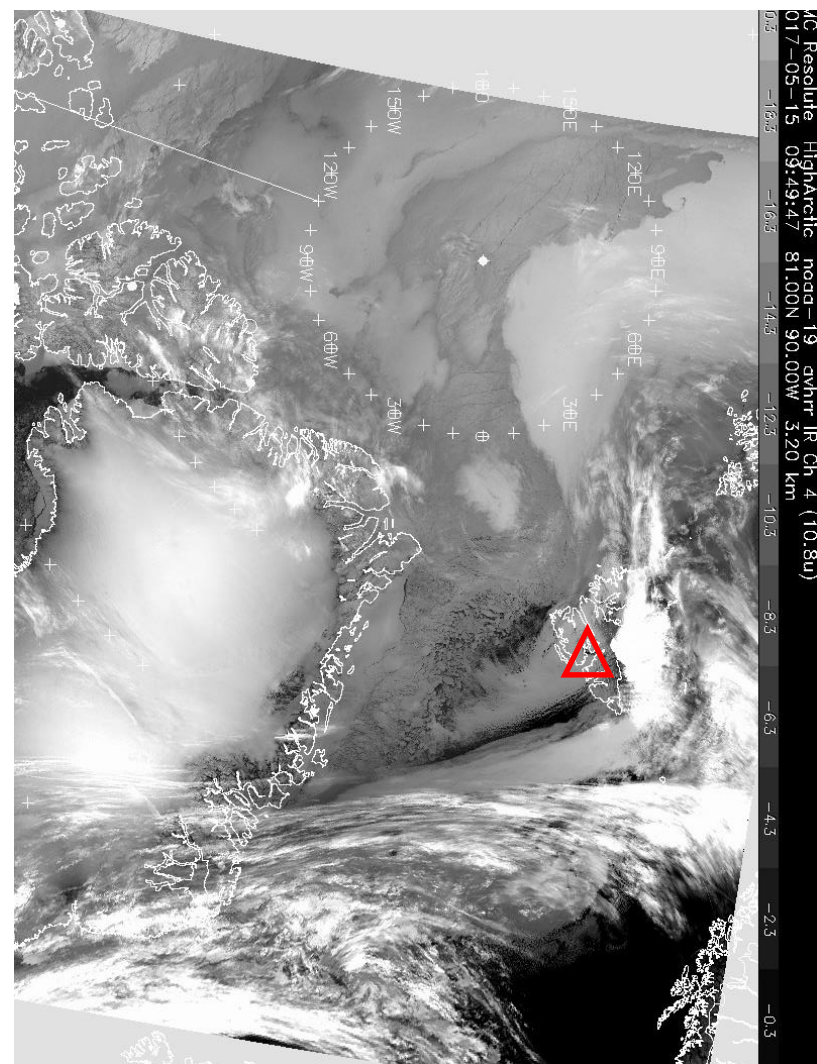
NOAA 15 May 2017 @ 0300-1200 UTC



NOAA 15 May 2017 @ 0946 UTC



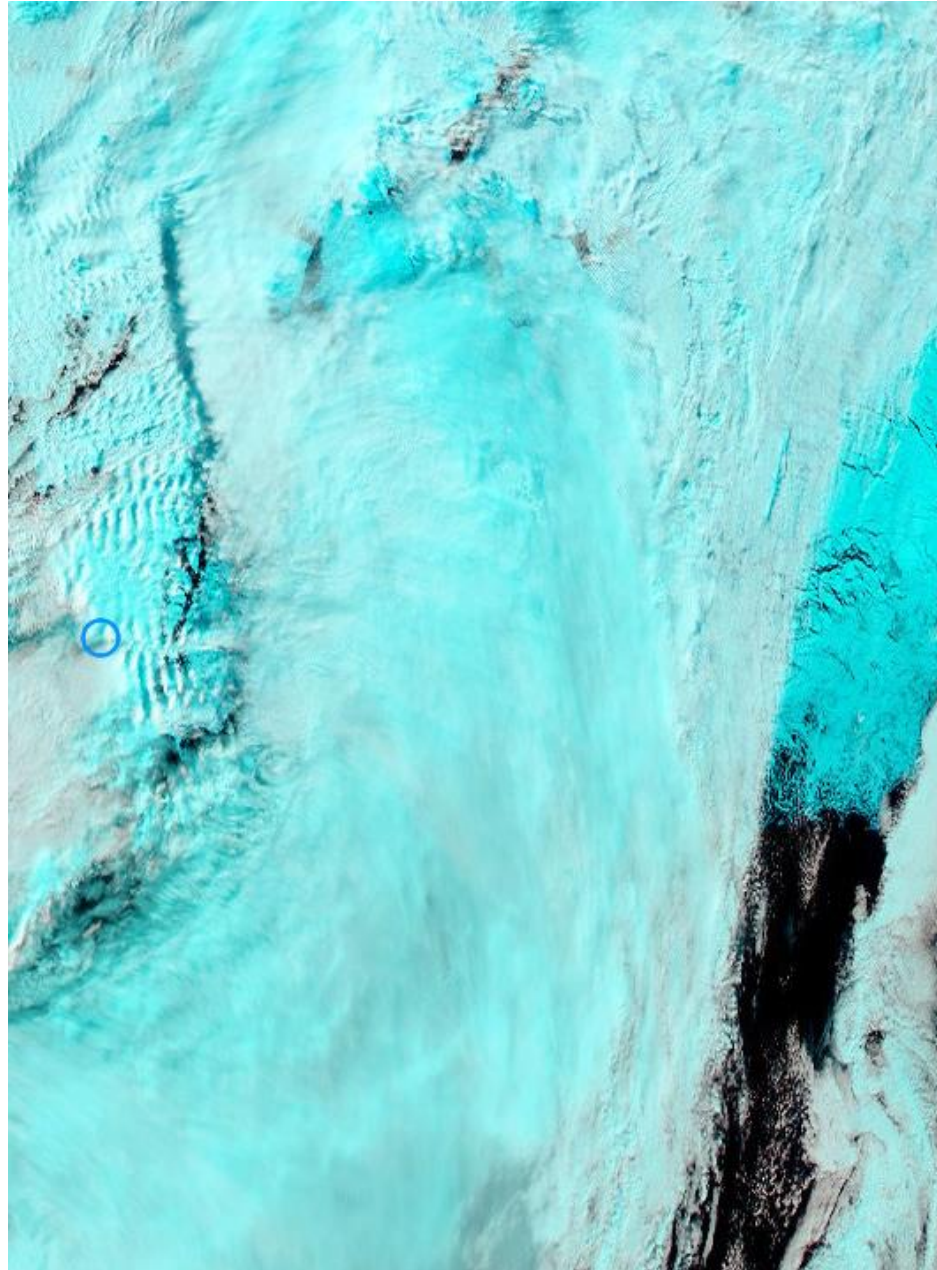
0.9 μm



10.8 μm

MODIS Aqua 15 May 2017

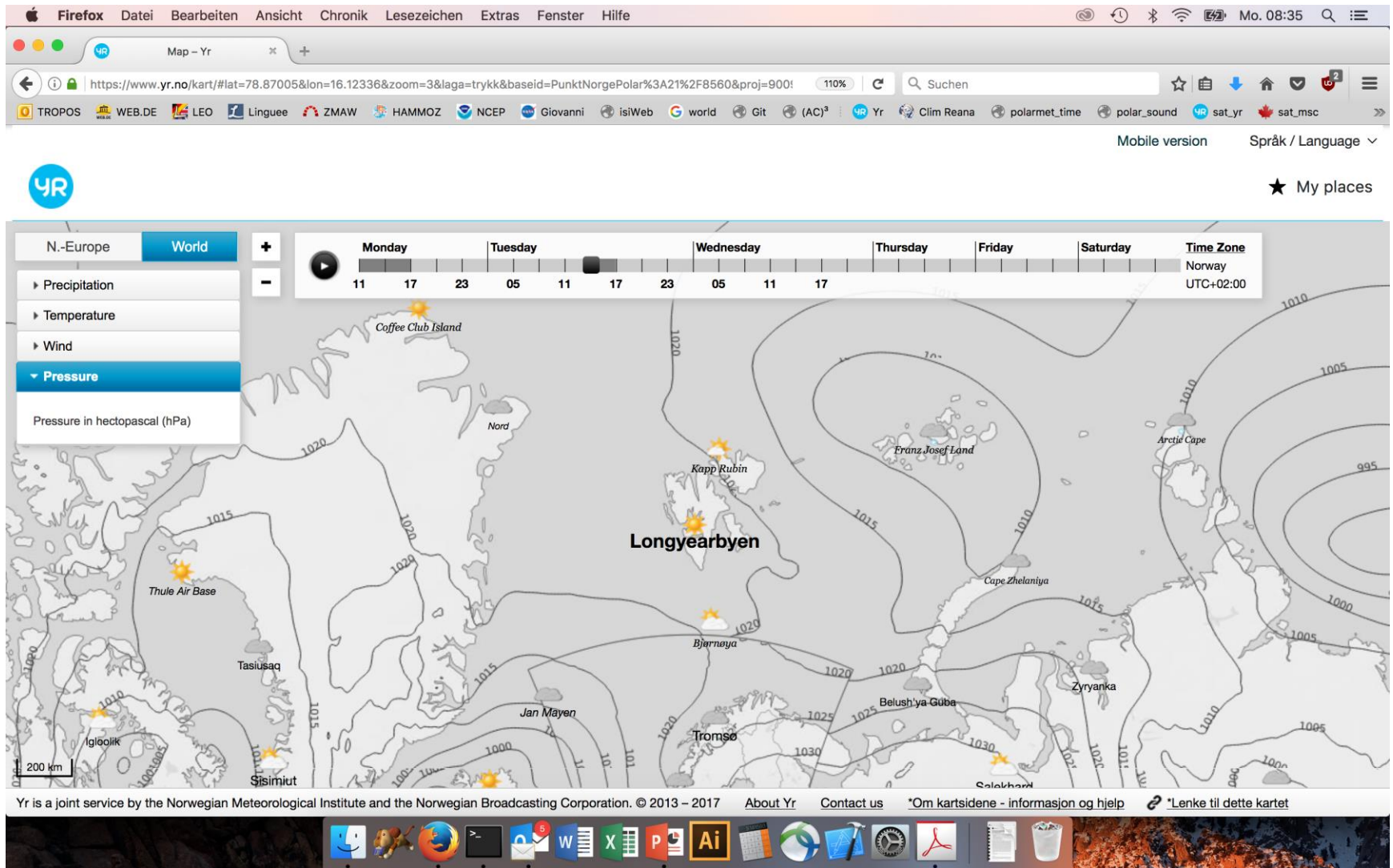
Hornsund,
Svalbard



Flight Day

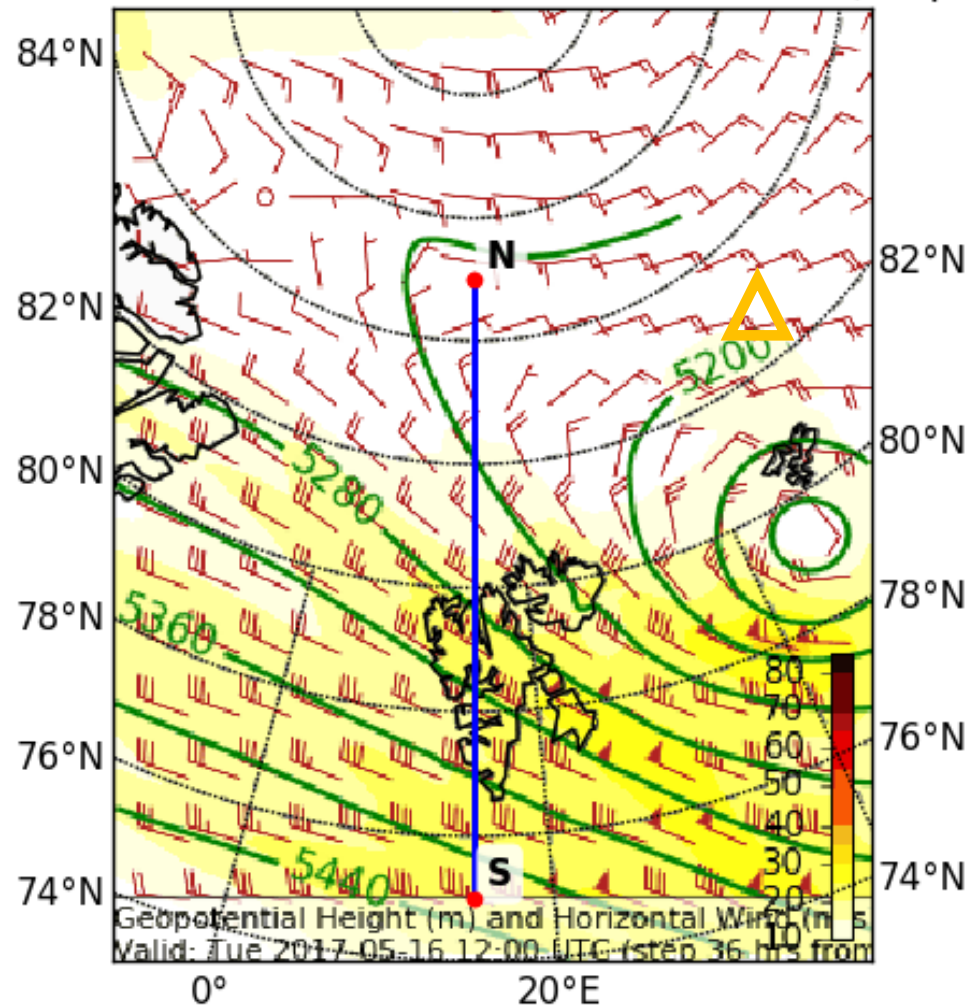
Tue 16 May 2017

Detailed Analysis 16 May 2017 @ 12 UTC



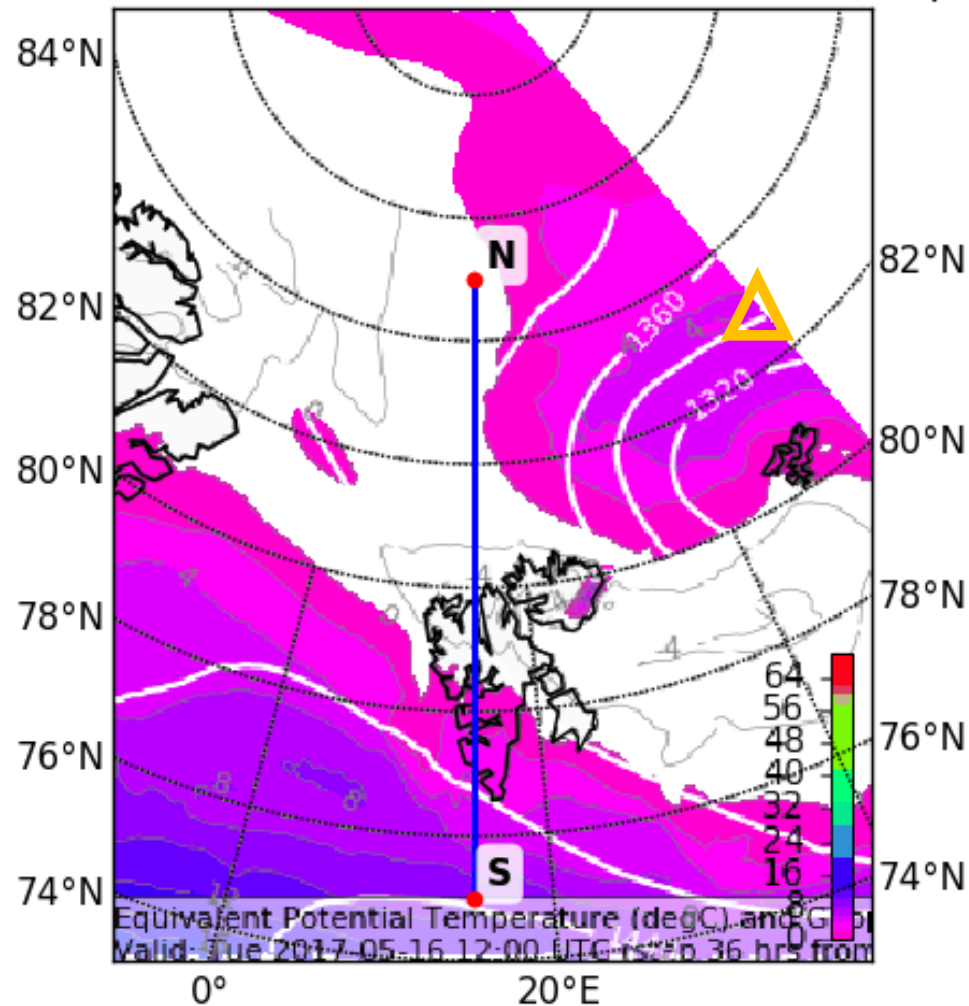
500-hPa Geopotential 16 May 2017 @ 12 UTC

Geopotential Height (m) and Horizontal Wind (m/s) (Wind Speed
Valid: Tue 2017-05-16 12:00 UTC (step 36 hrs from Mon 2017-05-15 00:00 UTC)

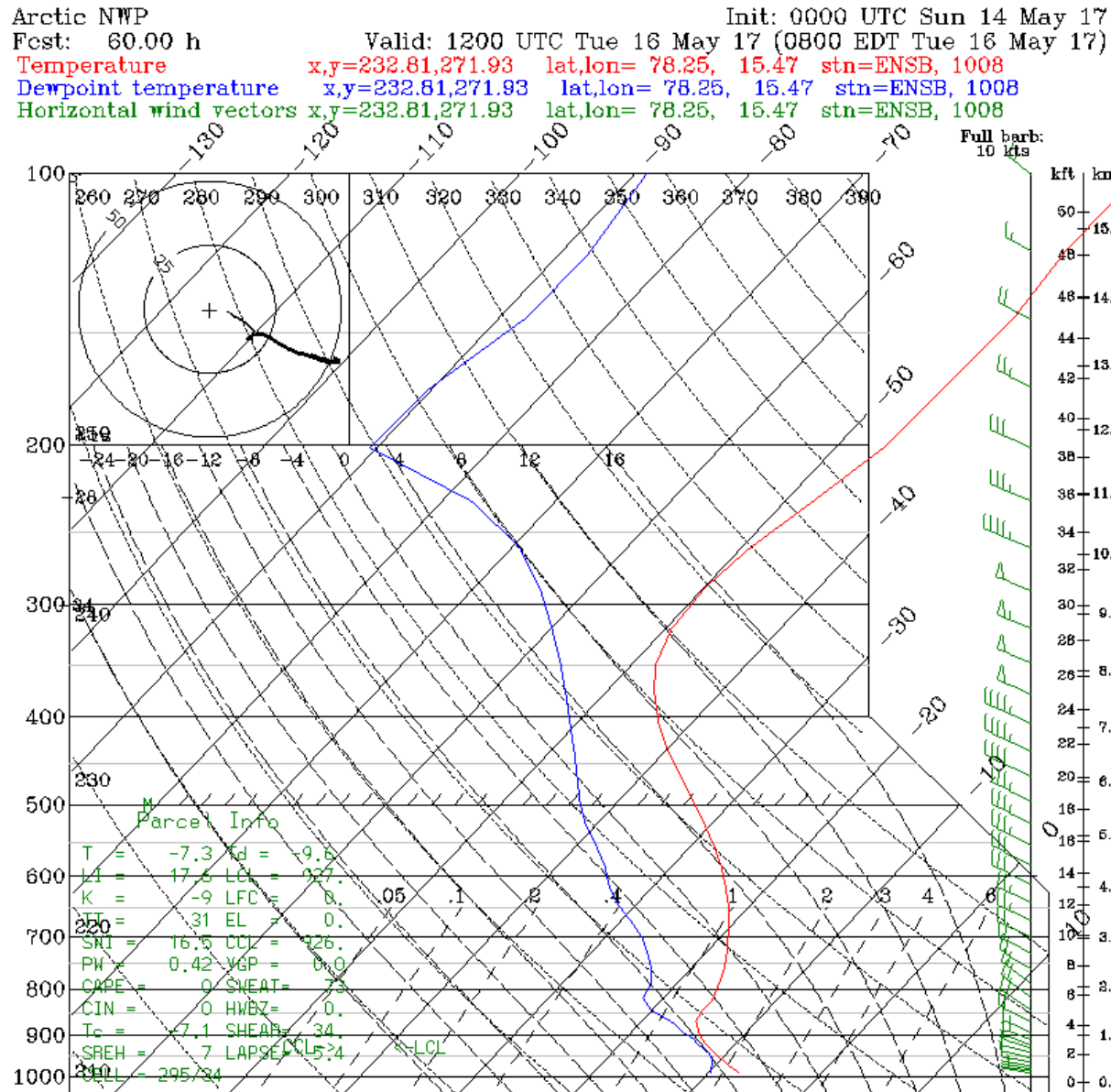


850-hPa Theta Equiv. 16 May 2017 @ 12 UTC

Equivalent Potential Temperature (degC) and Geopotential Height
Valid: Tue 2017-05-16 12:00 UTC (step 36 hrs from Mon 2017-05-15 00:00 UTC)



Sounding Longyearbyen 16 May 2017 @ 12 UTC



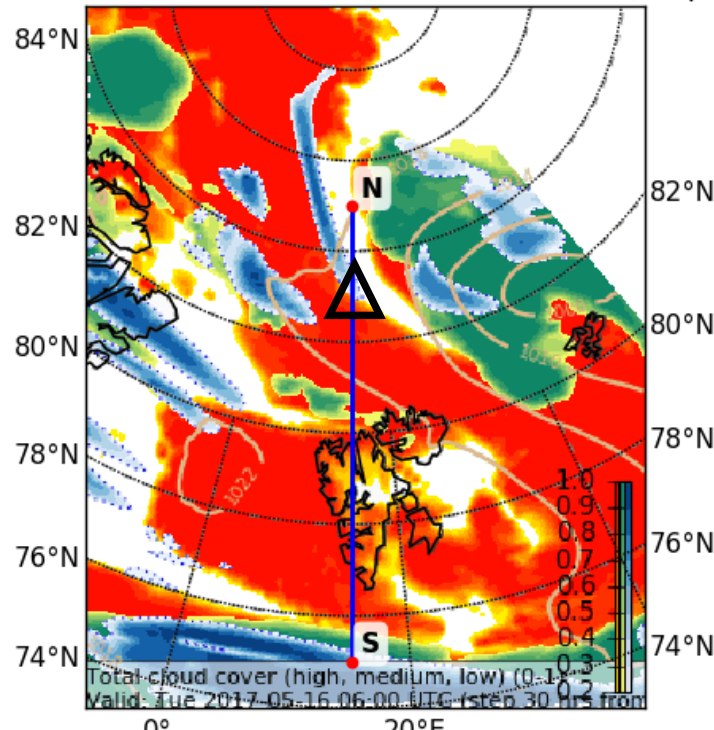
Weather in a nut shell – 15 May 2017

A screenshot of a web browser window displaying the METAR-TAF website. The browser's address bar shows "en.allmetsat.com/metar-taf/europe.php?icao=ENSB". The page title is "METAR-TAF". Below the navigation bar, there are search filters for "Airports : Longyearbyen" and "Europe". The main content area displays weather information for Longyearbyen, Norway, Svalbard Airport. It includes current weather observations (Wind 26 kt from the West, Temperature -2°C, Humidity 74%, Pressure 1017 hPa, Visibility: 2400 m) and a forecast (Forecast valid from 15 at 06 UTC to 16 at 06 UTC). The forecast details include Wind 15 kt from the West/Southwest, Visibility 10 km or more, Few clouds at a height of 1500 ft, Broken clouds at a height of 3000 ft, Temporary snow showers from 15 at 06 UTC to 15 at 12 UTC, Wind 20 kt from the West/Southwest with gusts up to 30 kt, Visibility: 2000 m at a height of 1000 ft, snow showers, Temporary snow showers from 15 at 12 UTC to 16 at 06 UTC, and Wind 15 kt from the West/Northwest. A map of Europe is shown on the right side of the page, with various stations marked by yellow and red dots. The bottom of the screen shows a Windows taskbar with several open applications.

Cloud Cover 16 May 2017 @ 06 UTC

Cloud Cover (0-1) (Total Cloud Cover)

Valid: Tue 2017-05-16 06:00 UTC (step 30 hrs from Mon 2017-05-15 00:00)

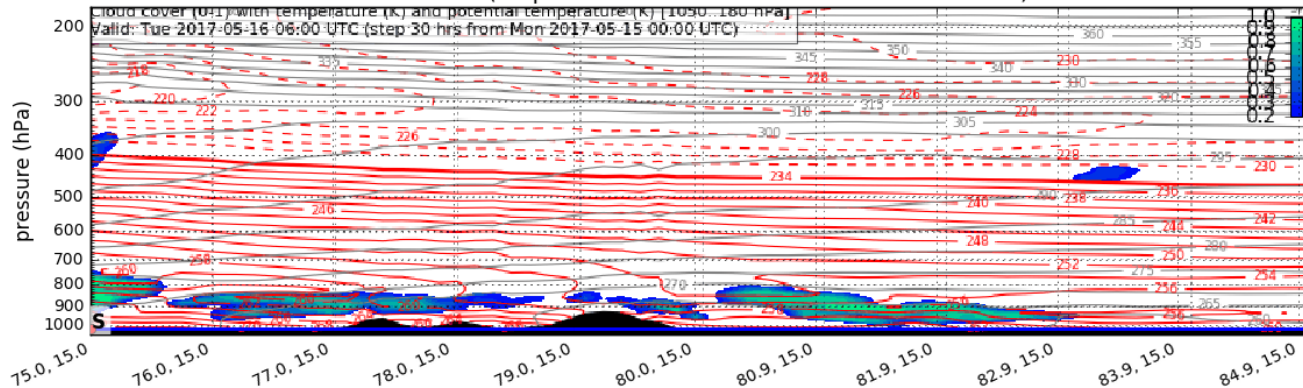


Ice station



Cloud Cover (0-1) vertical section

Valid: Tue 2017-05-16 06:00 UTC (step 30 hrs from Mon 2017-05-15 00:00 UTC)

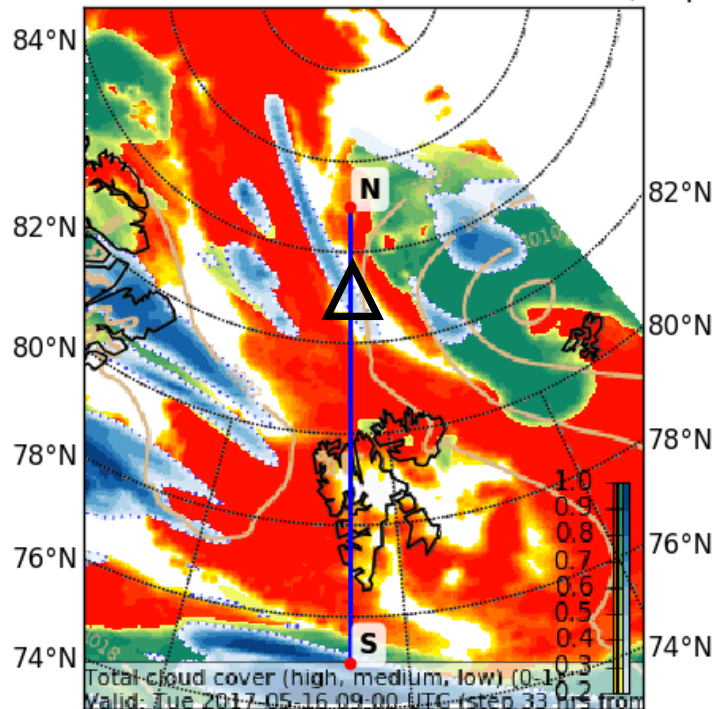


EPSG:77790015

Cloud Cover 16 May 2017 @ 09 UTC

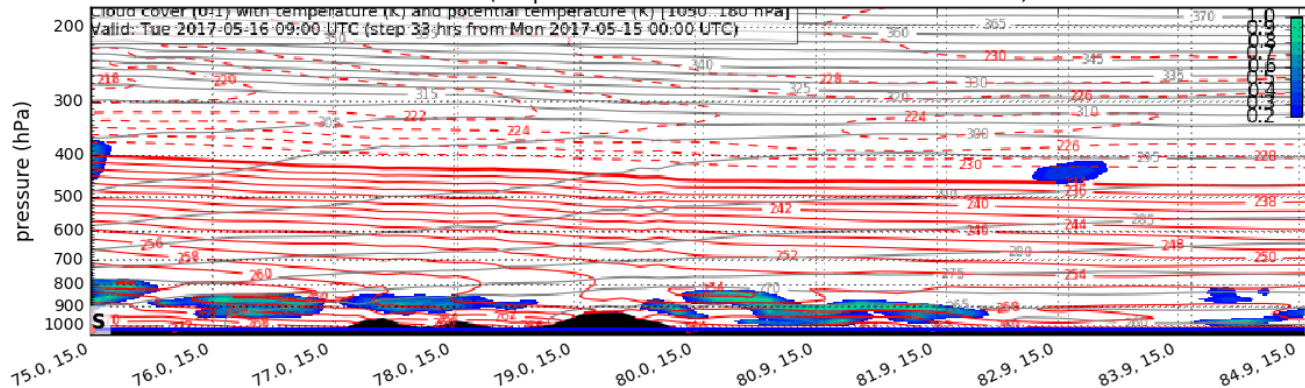
Cloud Cover (0-1) (Total Cloud Cover)

Valid: Tue 2017-05-16 09:00 UTC (step 33 hrs from Mon 2017-05-15 00:00)



Cloud Cover (0-1) vertical section

Valid: Tue 2017-05-16 09:00 UTC (step 33 hrs from Mon 2017-05-15 00:00 UTC)

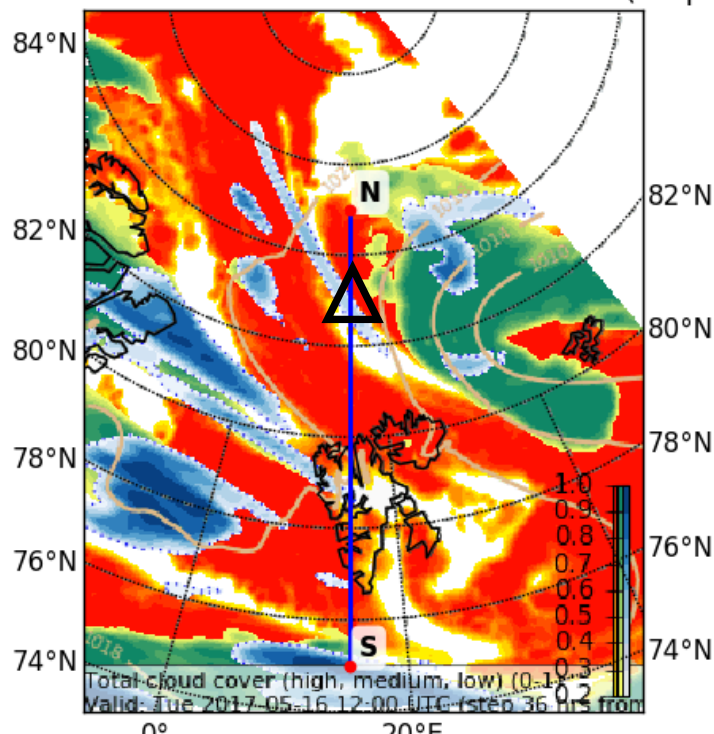


EPSG:77790015

Cloud Cover 16 May 2017 @ 12 UTC

Cloud Cover (0-1) (Total Cloud Cover)

Valid: Tue 2017-05-16 12:00 UTC (step 36 hrs from Mon 2017-05-15 00:00)

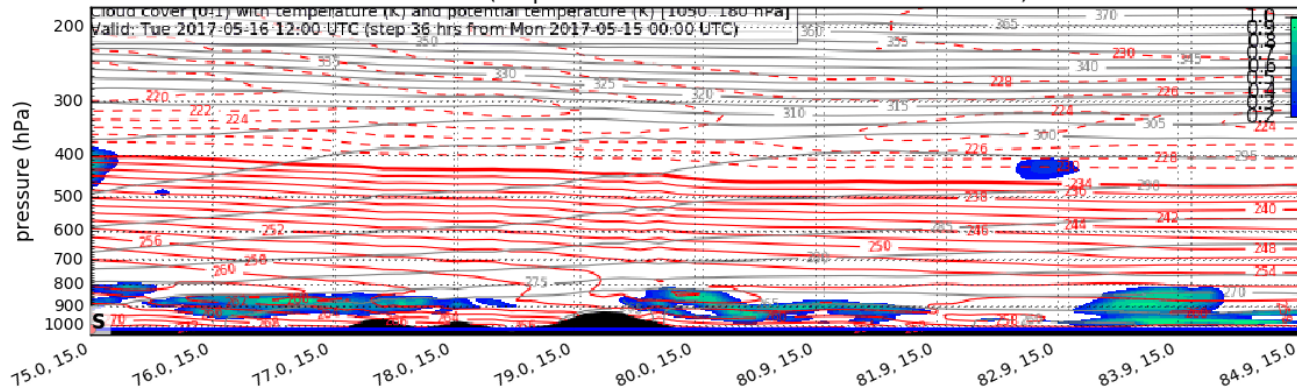


Cloud Cover (0-1) vertical section

Valid: Tue 2017-05-16 12:00 UTC (step 36 hrs from Mon 2017-05-15 00:00 UTC)

Cloud cover (0-1) with temperature (K) and potential temperature (K) [1050, 180 hPa]

Valid: Tue 2017-05-16 12:00 UTC (step 36 hrs from Mon 2017-05-15 00:00 UTC)

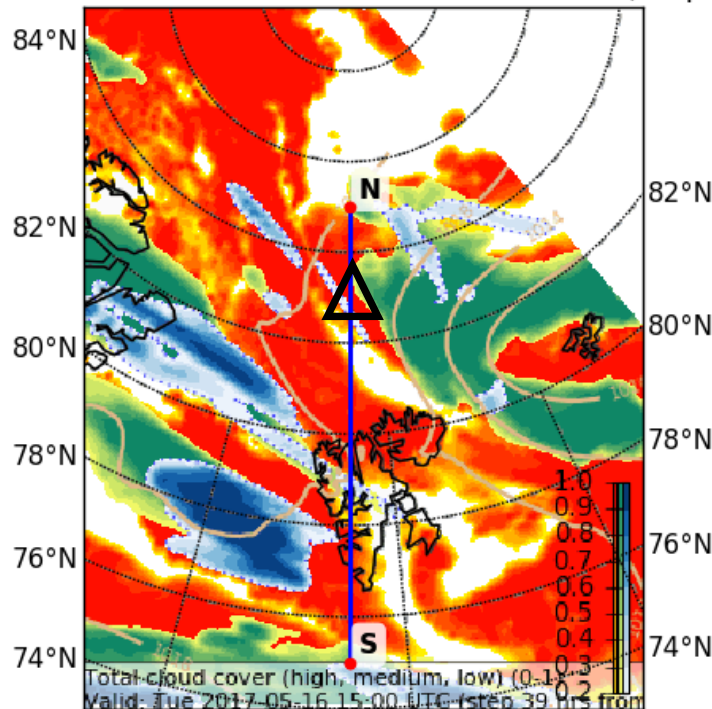


EPSG:77790015

Cloud Cover 16 May 2017 @ 15 UTC

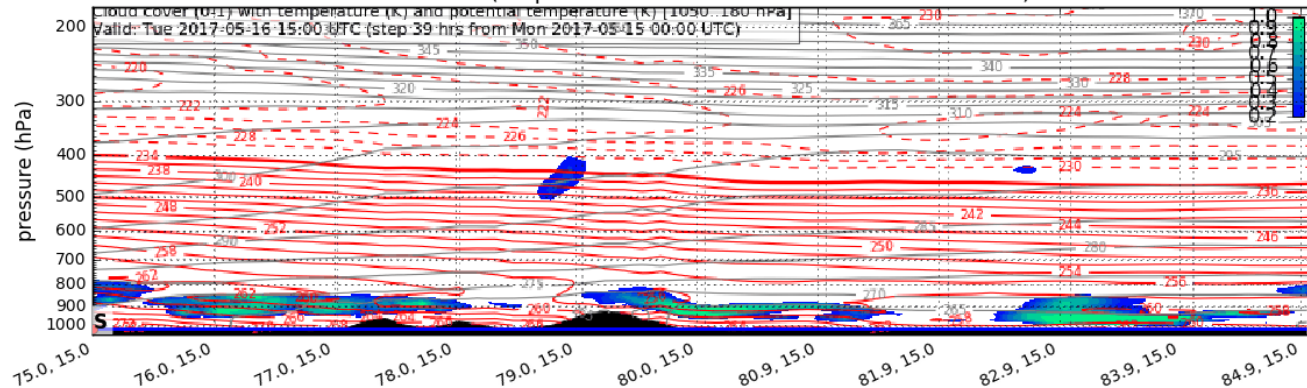
Cloud Cover (0-1) (Total Cloud Cover)

Valid: Tue 2017-05-16 15:00 UTC (step 39 hrs from Mon 2017-05-15 00:00)



Cloud Cover (0-1) vertical section

Valid: Tue 2017-05-16 15:00 UTC (step 39 hrs from Mon 2017-05-15 00:00 UTC)

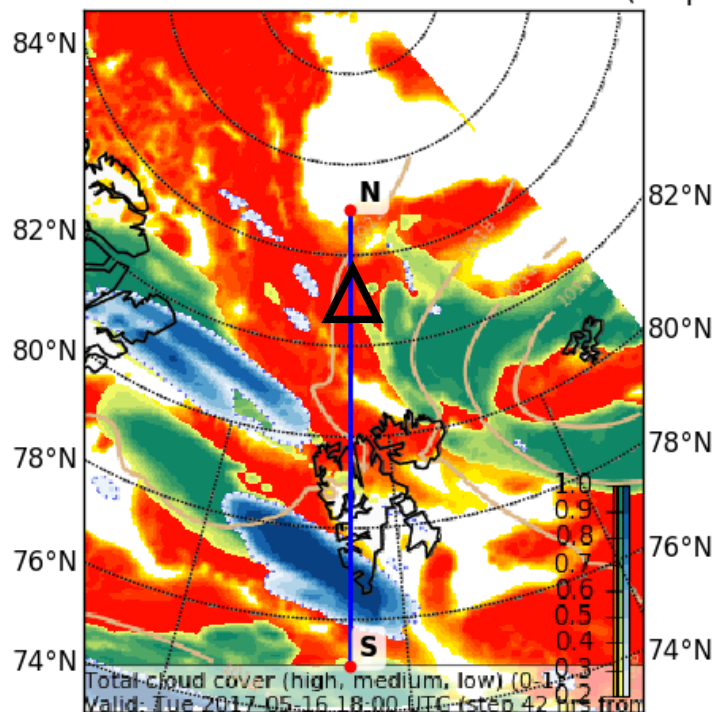


EPSG:77790015

Cloud Cover 16 May 2017 @ 18 UTC

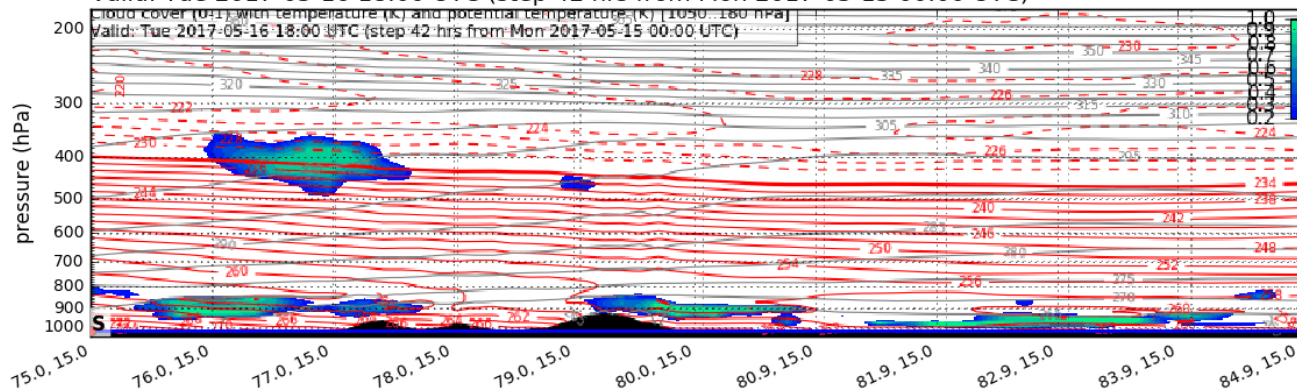
Cloud Cover (0-1) (Total Cloud Cover)

Valid: Tue 2017-05-16 18:00 UTC (step 42 hrs from Mon 2017-05-15 00:00)



Cloud Cover (0-1) vertical section

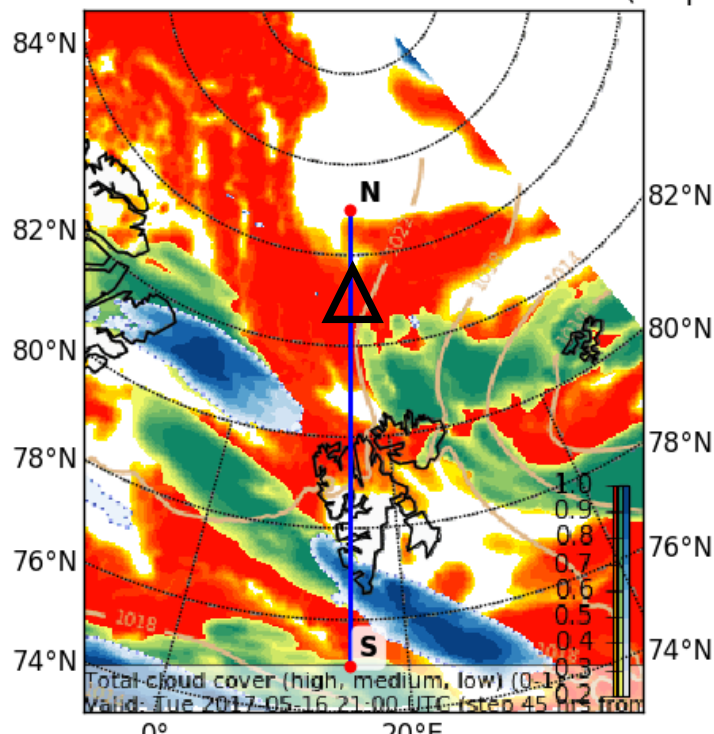
Valid: Tue 2017-05-16 18:00 UTC (step 42 hrs from Mon 2017-05-15 00:00 UTC)



Cloud Cover 16 May 2017 @ 21 UTC

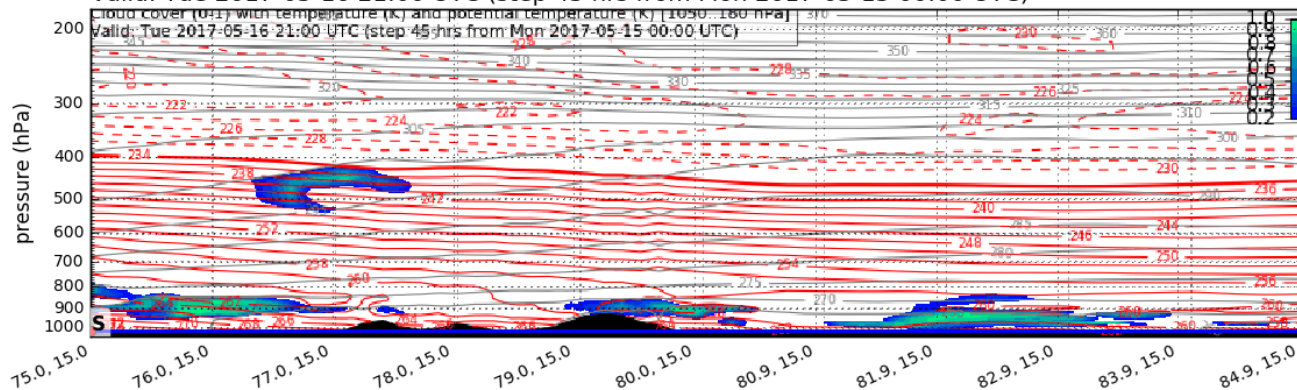
Cloud Cover (0-1) (Total Cloud Cover)

Valid: Tue 2017-05-16 21:00 UTC (step 45 hrs from Mon 2017-05-15 00:00)



Cloud Cover (0-1) vertical section

Valid: Tue 2017-05-16 21:00 UTC (step 45 hrs from Mon 2017-05-15 00:00 UTC)



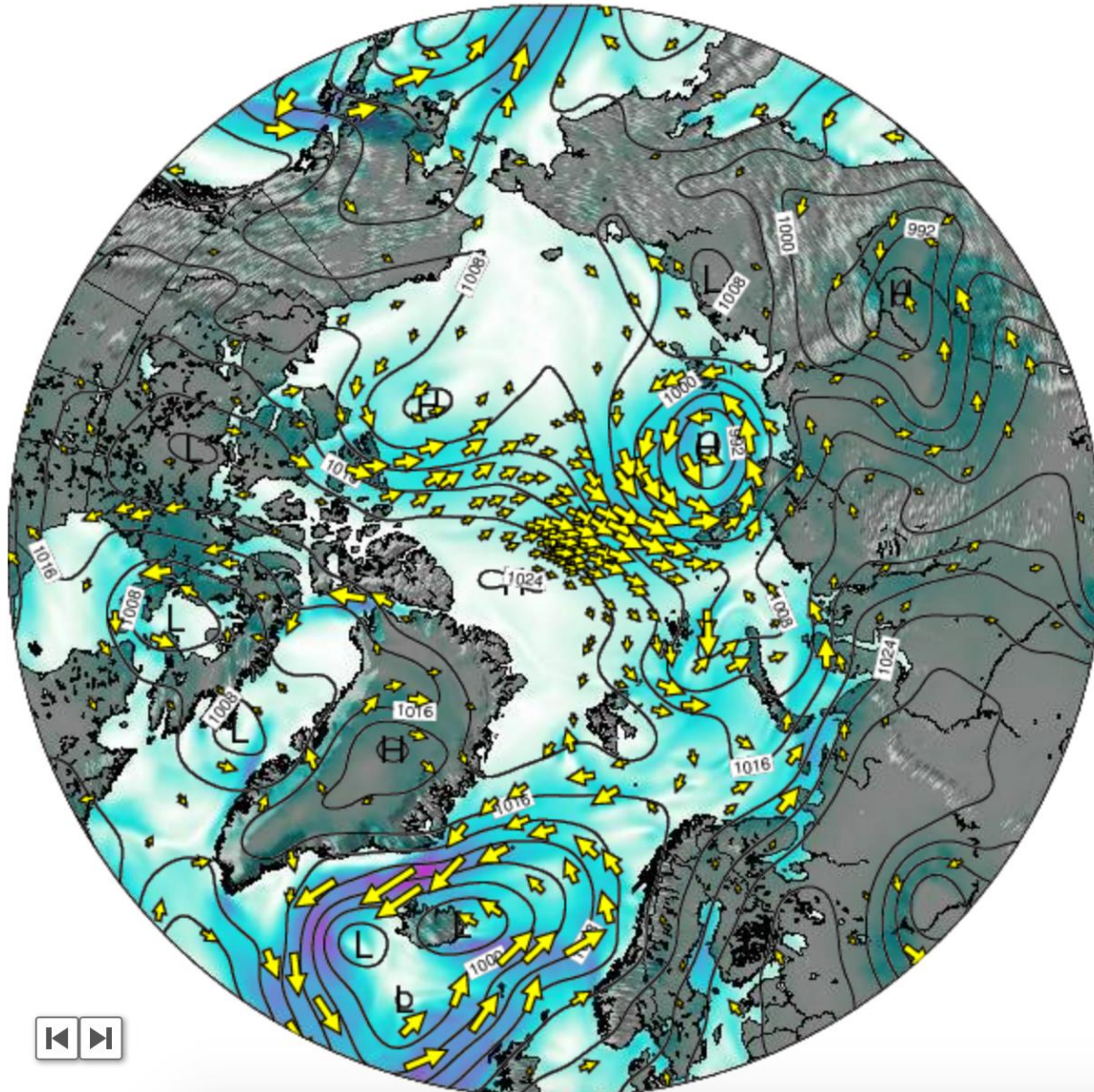
EPSG:77790015

Outlook

Wed 17 May – Thu 18 May 2017

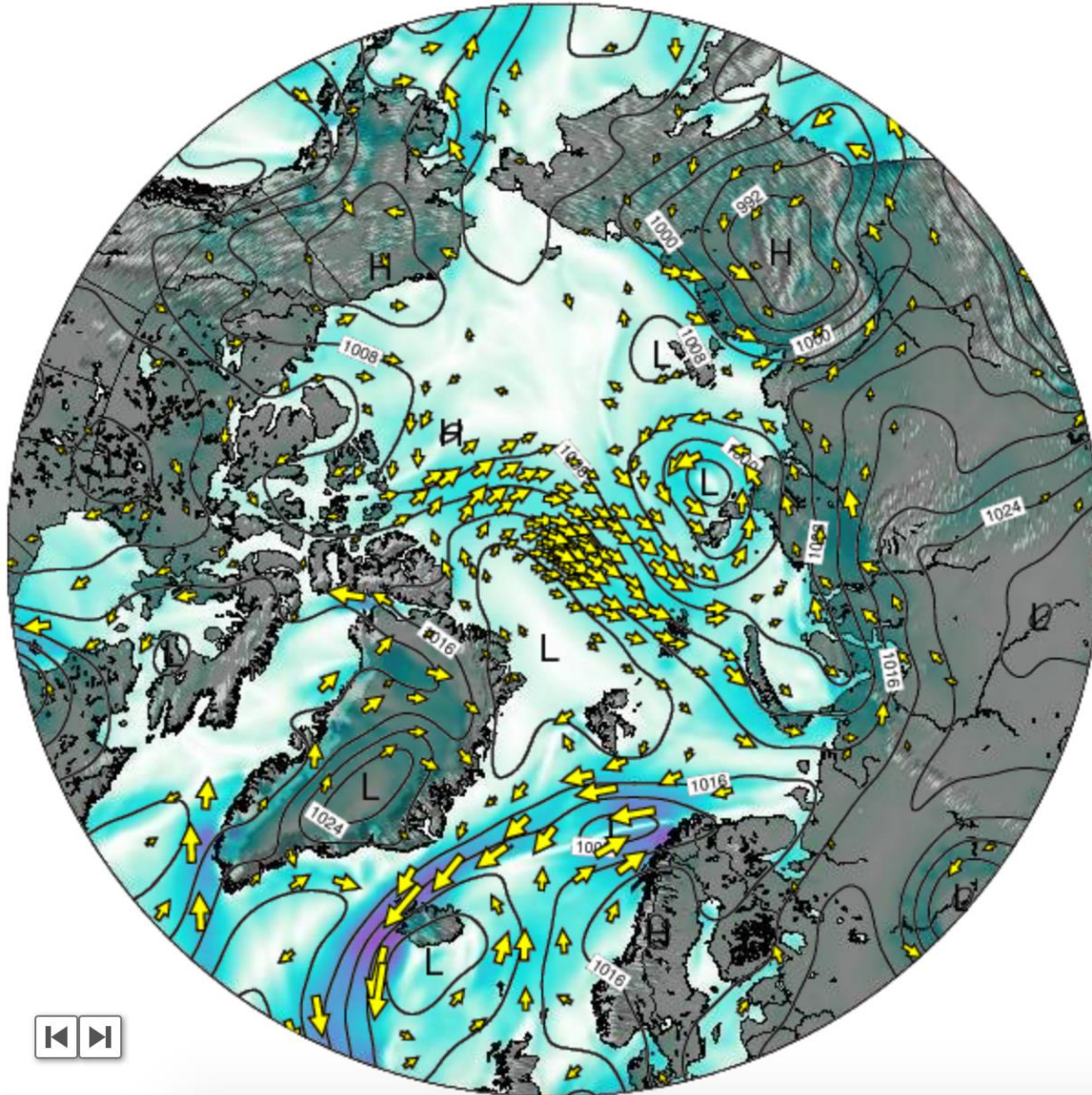
Outlook – General Weather Situation

Surface Wind on Wednesday 17 May at 12am UTC



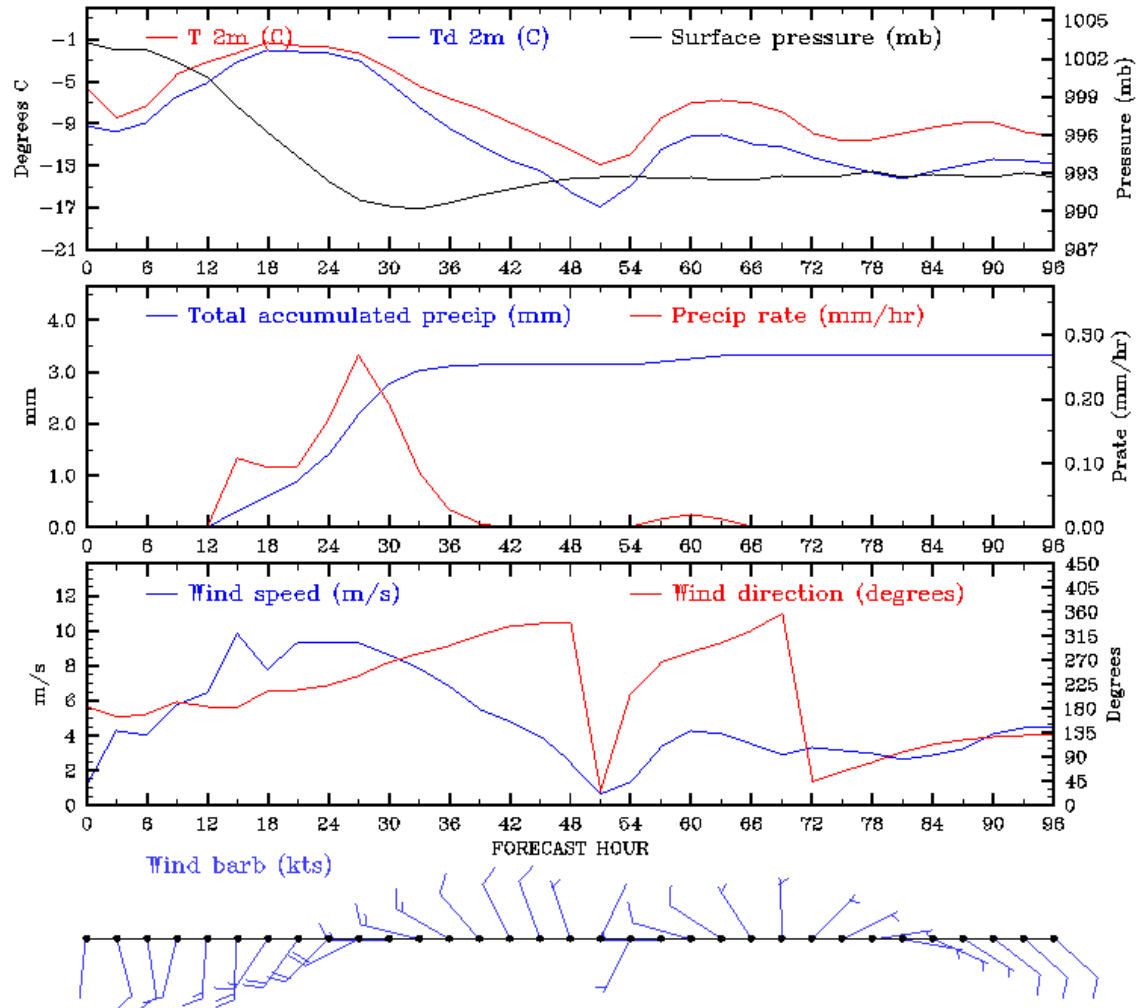
Outlook – General Weather Situation

Surface Wind on Thursday 18 May at 12am UTC



Outlook – Meteogram

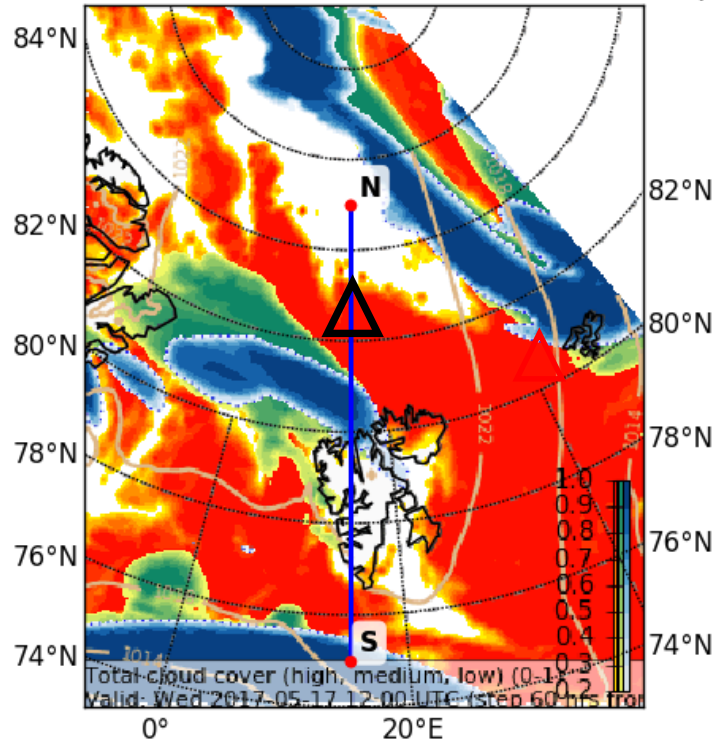
2017051400 UTC Time Series Forecast for Svalbard, NOR



Cloud Cover 17 May 2017 @ 12 UTC

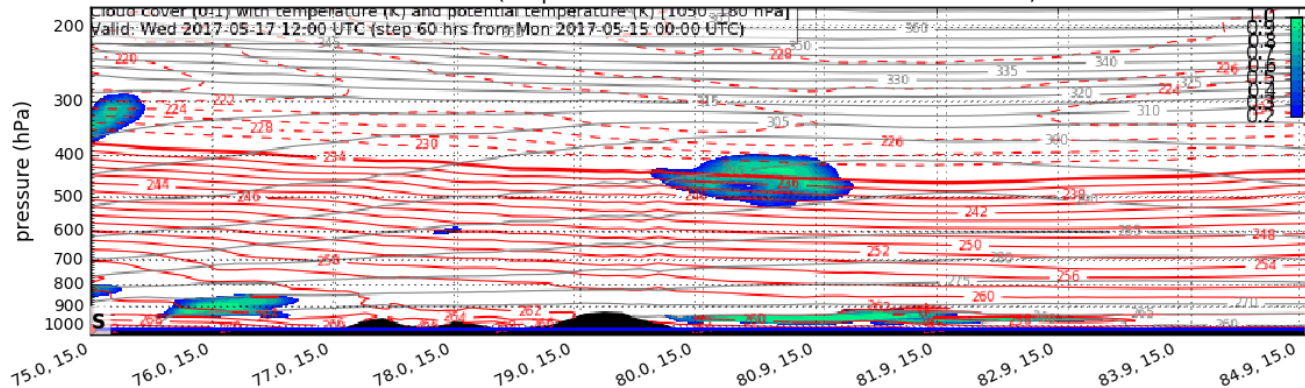
Cloud Cover (0-1) (Total Cloud Cover)

Valid: Wed 2017-05-17 12:00 UTC (step 60 hrs from Mon 2017-05-15 00:00)



Cloud Cover (0-1) vertical section

Valid: Wed 2017-05-17 12:00 UTC (step 60 hrs from Mon 2017-05-15 00:00 UTC)

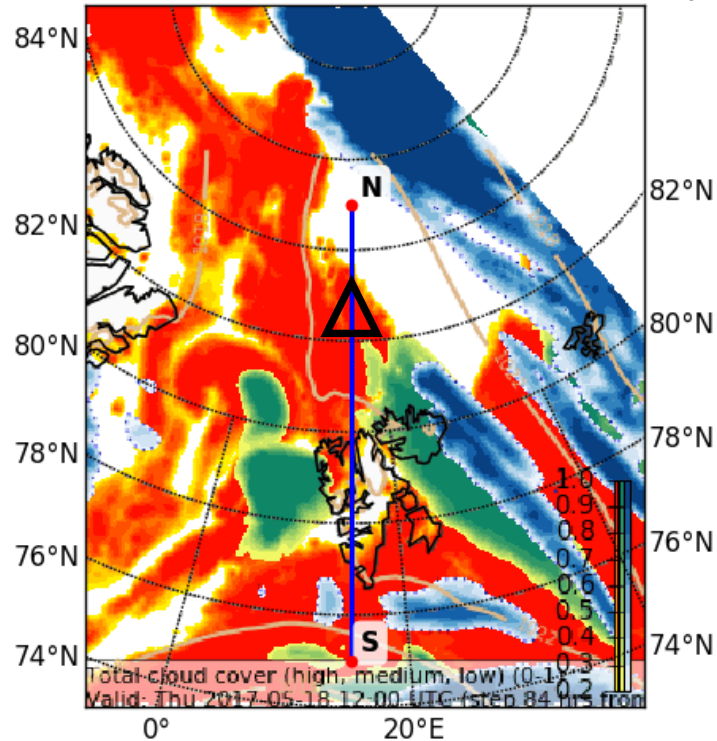


EPSG:77790015

Cloud Cover 18 May 2017 @ 12 UTC

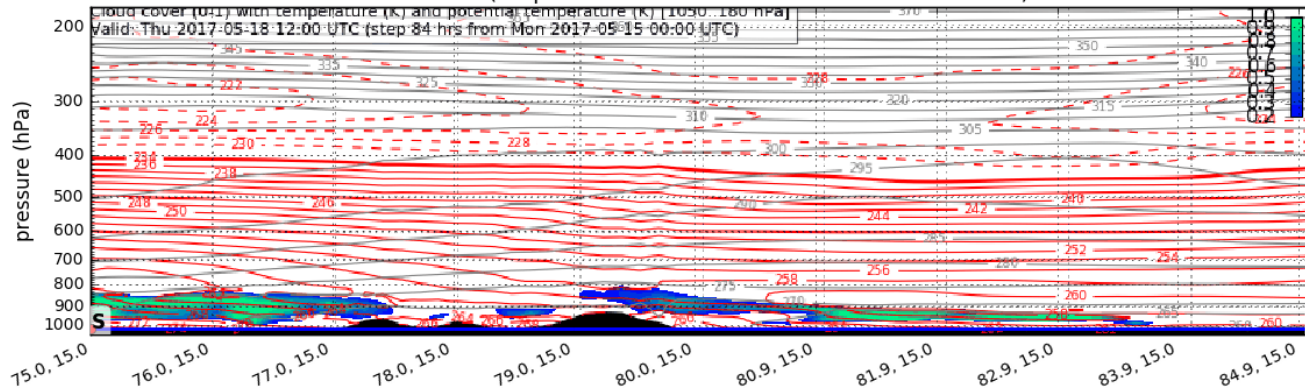
Cloud Cover (0-1) (Total Cloud Cover)

Valid: Thu 2017-05-18 12:00 UTC (step 84 hrs from Mon 2017-05-15 00:00)



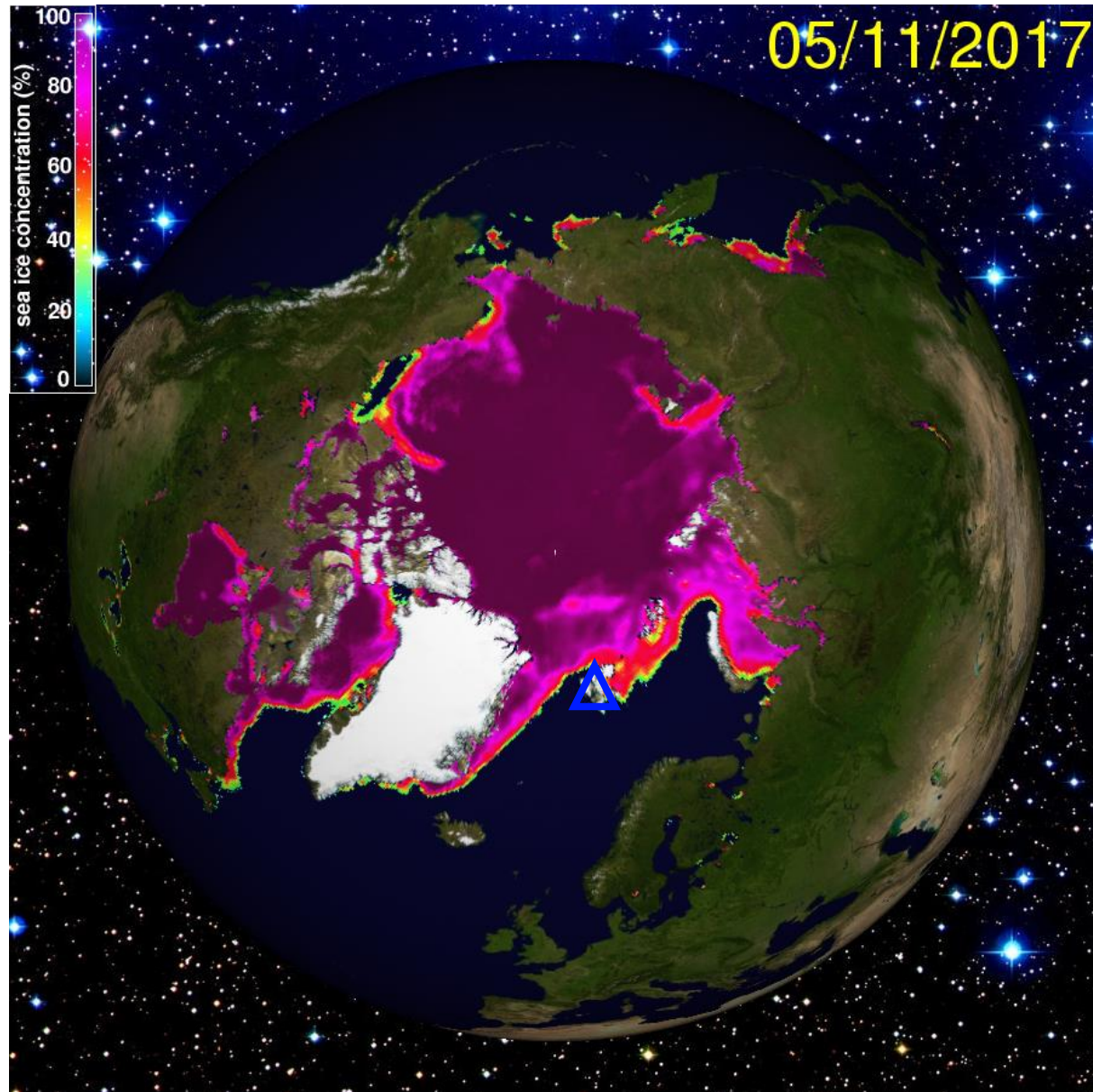
Cloud Cover (0-1) vertical section

Valid: Thu 2017-05-18 12:00 UTC (step 84 hrs from Mon 2017-05-15 00:00 UTC)



EPSG:77790015

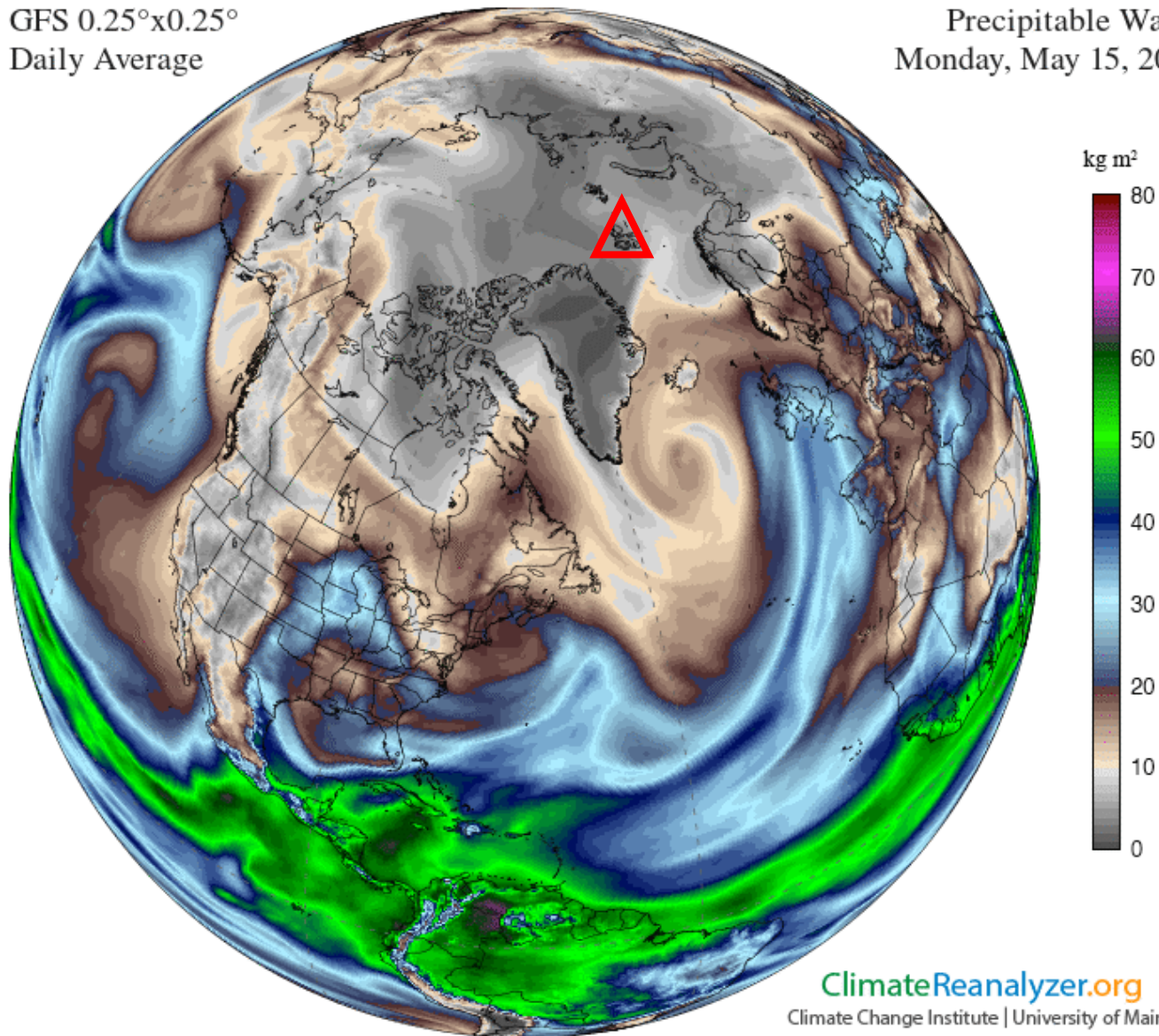
Arctic sea ice 14 May 2017



Precip. Water 15 May 2017

GFS 0.25°x0.25°
Daily Average

Precipitable Water
Monday, May 15, 2017



ClimateReanalyzer.org

Climate Change Institute | University of Maine

Jet Stream Wind 15 May 2017

GFS 0.25°x0.25°
Daily Average

Wind Speed at 250 mbar
Monday, May 15, 2017

