

# ACLOUD Flight 2017 06 16

**POLAR 6**  
**In Situ**

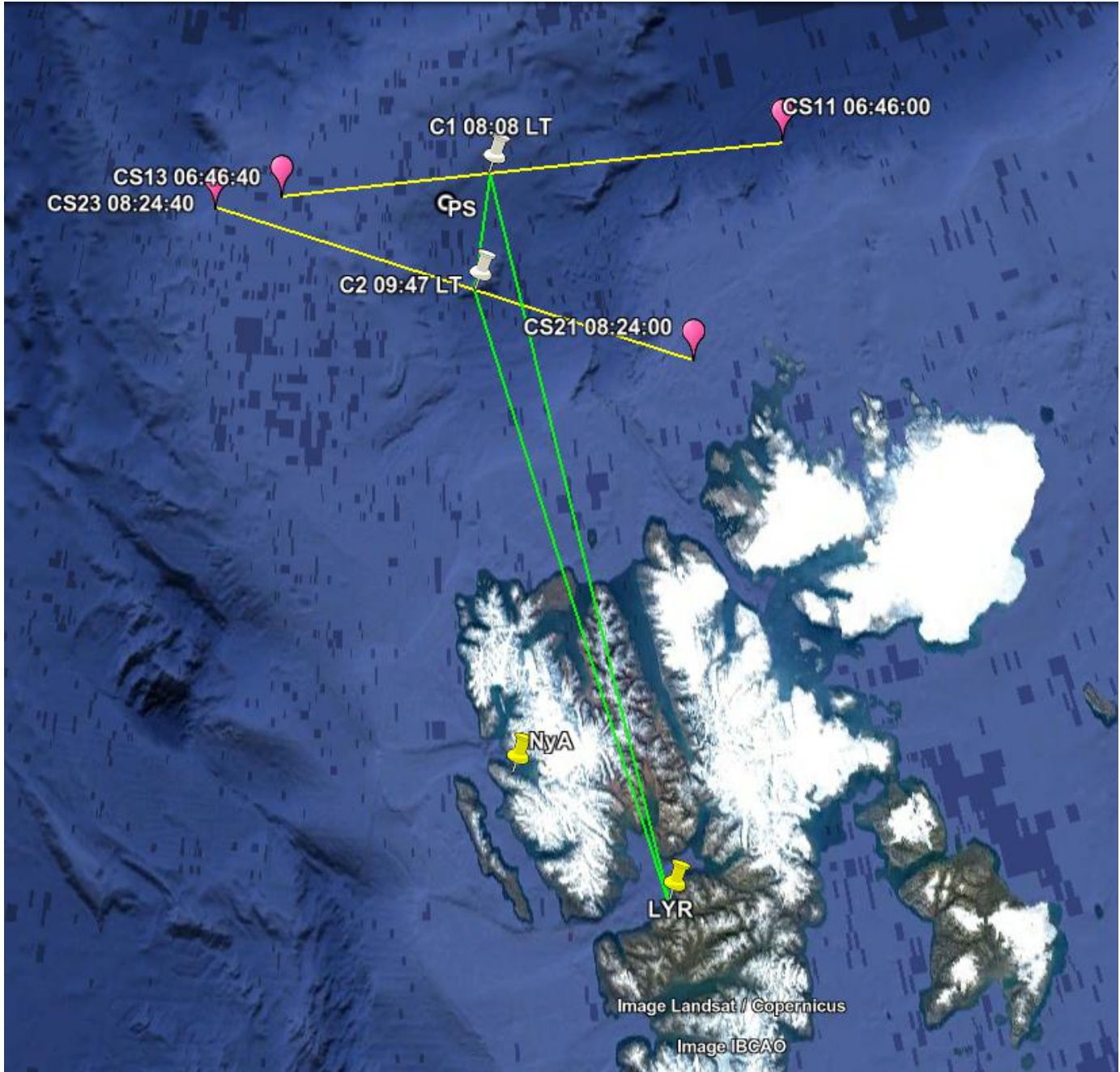
Crew:	Mission PI	Emma Järvinen
	AWI	Cristina Sans i Coll
	Aerosol 1	Udo Kästner
	Aerosol 2	Franziska Köllner
	Trace Gas	Oliver Eppers
	PMS	Guillaume Mioche

Est. Take Off: 6:30 LT  
Est. Duration: 5 h 35 min

Waypoints:           **C1:** 81° 49.557'N, 12° 15.221'E  
                          **C2:** 81° 15.726'N, 11° 35.833'E

LYR – C1	be at C1 at 08:08 LT Aerosol profile: 6000 ft – 12000 ft – 9000 ft – 4000 ft	<b>255 NM @ free</b>	<b>95 min</b>
C1 position	3 hour glass pattern, 6 altitudes <i>collocated with P5 at 08:46 LT</i>	<b>140 NM @ 120kn</b>	<b>70 min</b>
C1 – C2	be at C1 at 09:47 LT	<b>50 NM @140kn</b>	<b>20 min</b>
C2 position	3 hour glass pattern, 6 altitudes <i>collocated with P5 at 10:24 LT</i>	<b>140 NM @ 120kn</b>	<b>70 min</b>
C2- LYR	Aerosol profile: 200-500 ft – 6000 ft – 12000 ft – 9000 ft – 4000 ft	<b>215 NM @free</b>	<b>80 min</b>

Total: **5h 35 min**



### B. sand glass pattern

15 mile straight leg, on and perpendicular to the satellite track

