

ACLOUD Flight 2017 06 18

POLAR 5
Remote

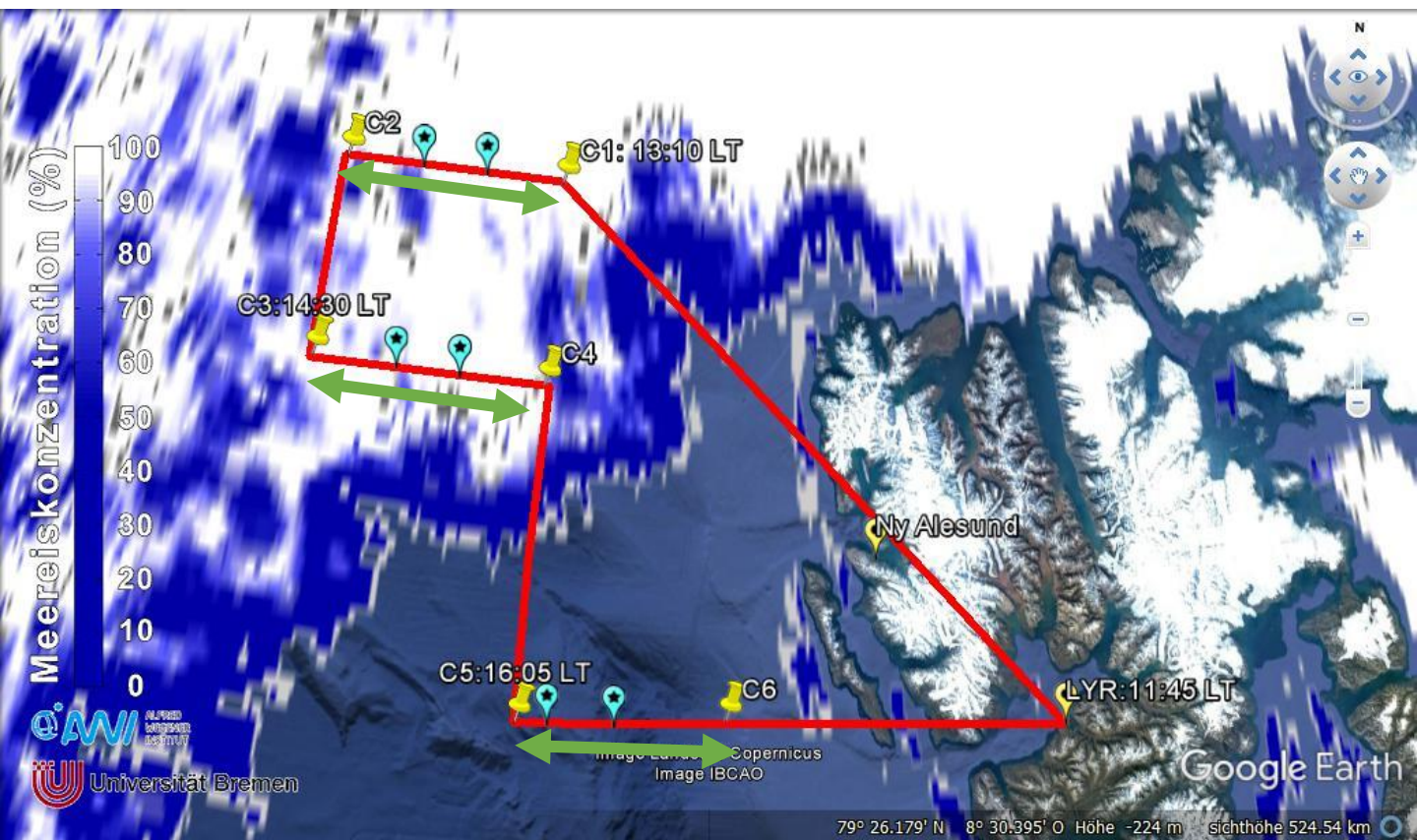
Crew:	Mission PI	Manfred Wendisch	
	AWI	Lukas Kandora	Est. Take Off: 10:30 LT
	SMART	Elena Ruiz	
	Eagle/Hawk	Tobias Donth	Est. Duration: 5h 5 min
	MiRAC	Tobias Doktorowski	
	AMALI	Marek Jacob	

Waypoints:	C1 (11:55 LT)	80° 20' N, 5° 0' E	80.333° N, 5.000° E
	C2	80° 20' N, 0° 0' E	80.333° N, 0.000° E
	C3 (13:15 LT)	79° 33' N, 0° 0' E	79.550° N, 0.000° E
	C4	79° 33' N, 5° 0' E	79.550° N, 5.000° E
	C5 (14:50 LT)	78° 15' N, 5° 0' E	78.250° N, 5.000° E
	C6	78° 18' N, 9° 0' E	78.300° N, 9.000° E

Between C1 and C5 all in 10,000 ft

<u>LYR—NyA—C1</u>	Ascend to 10,000 ft Cross-pattern over Ny Alesund	174 NM @ 160 kn	65 min 20 min
<u>C1—C2</u>	3 times, back & forth Collocated with P6, DS1	50 NM @ 150 kn	60 min
<u>C2—C3</u>		46 NM @ 150 kn	20 min
<u>C3—C4</u>	3 times, back & forth Collocated with P6, DS2	54 NM @ 150 kn	60 min
<u>C4—C5</u>		78 NM @ 150 kn	32 min
<u>C5—C6</u>	3 times, back & forth Collocated with P6, DS3	49 NM @ 150 kn	60 min
<u>C6—LYR</u>	DS4	81 NM @ 160 kn	30 min

Total: 347 min = 5 h 47 min



**Cross Pattern at 10,000 ft
Over Ny Alesund
5 min straight leg**

