

Weather briefing ACLOUD

From Mon 26 June 2017
for Tue 27 June 2017
and next three days

Summary

A low pressure system accompanied by an occluded front west of us moves slowly northeastward over the day and tomorrow. Along with a weak high pressure in the east, this sets up a southerly air flow. S-SW up to 30 kt winds west of us, S 10-15 kt to the east, SE-S 10-15 kt to the north, and SW-W 5-10 kt near Longyearbyen – at maximum around 5000 ft.

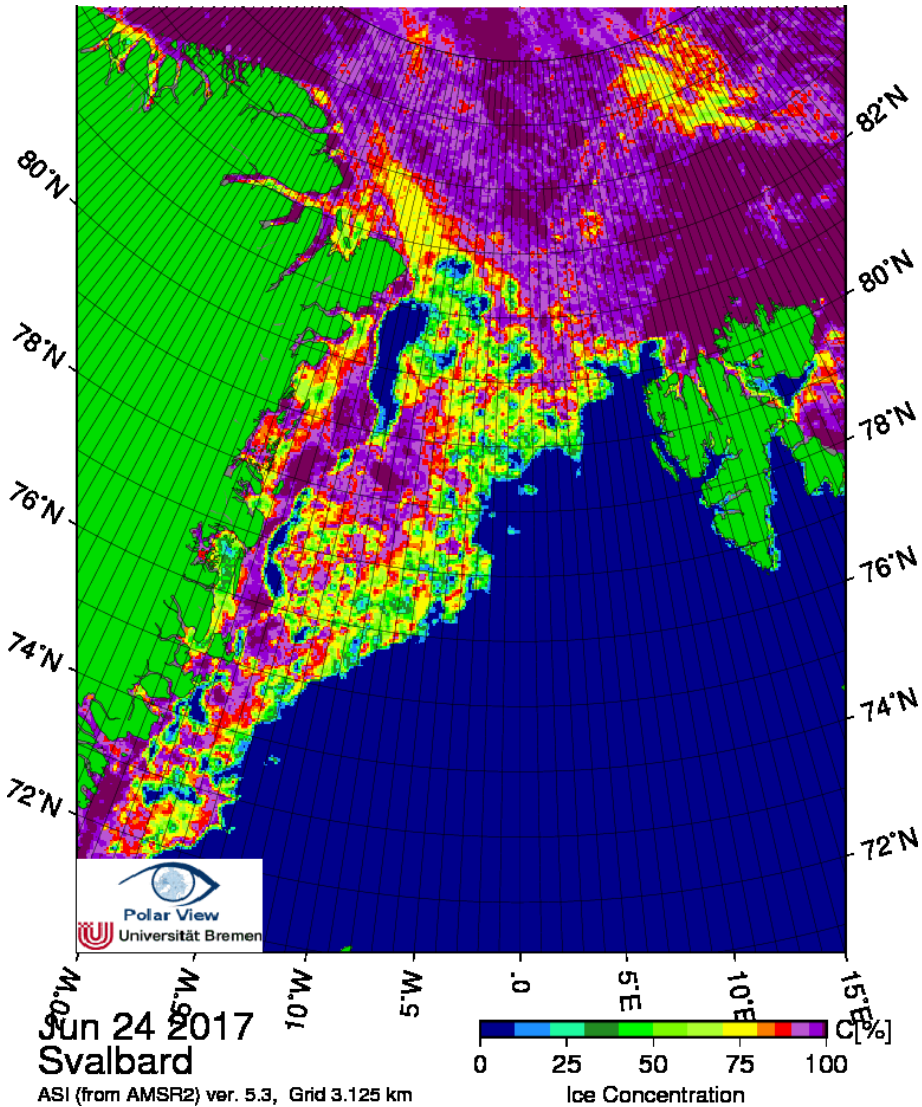
Low-level clouds mainly covering all our areas of interest today and tomorrow, with mid-level clouds moving in from the west tonight. High-level clouds becoming denser over the day.

Rain showers over Longyearbyen today, again picking up in the evening tomorrow. Few chances of fog during daytime.

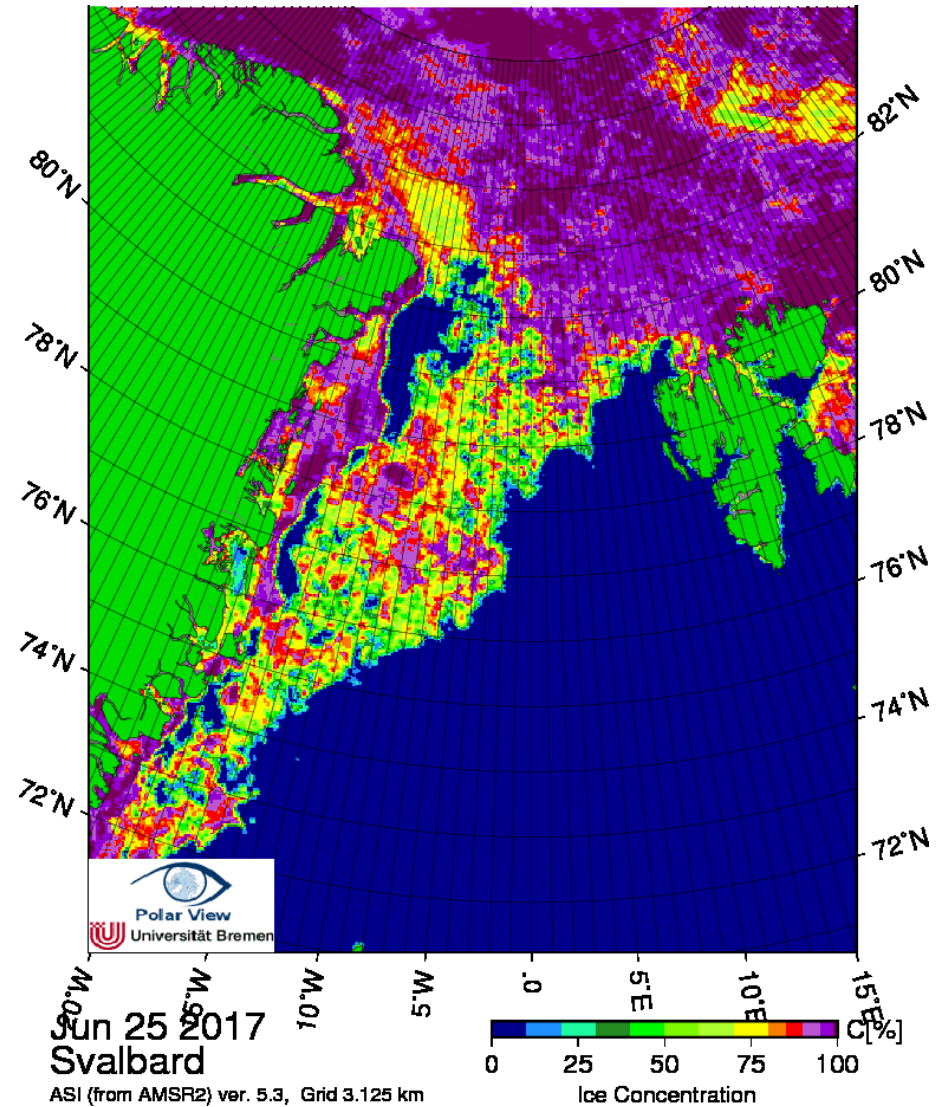
Observations and nowcast
Sat 24 – Mon 26 June 2017

Sea ice concentration

Sat Jun 24



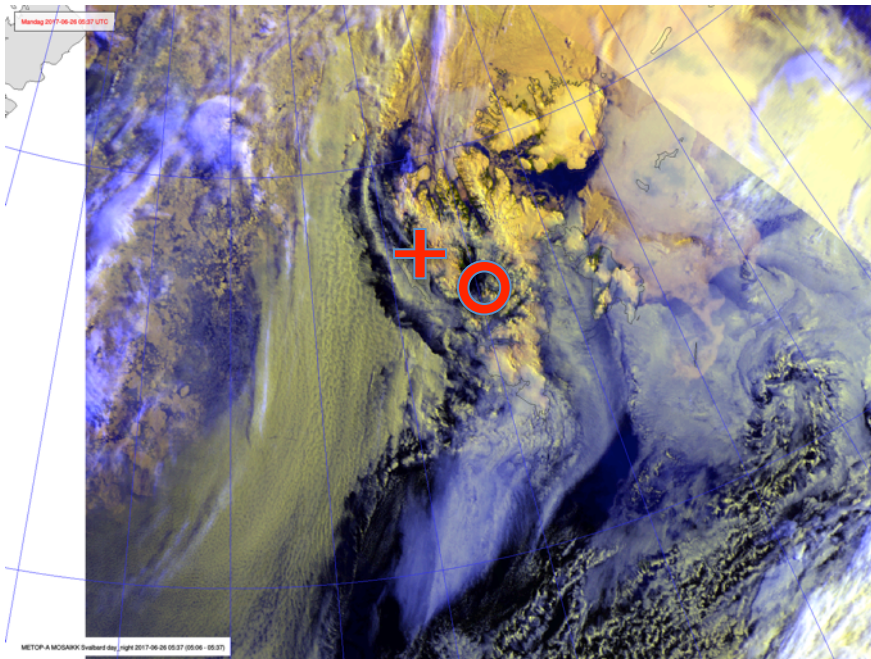
Sun Jun 25



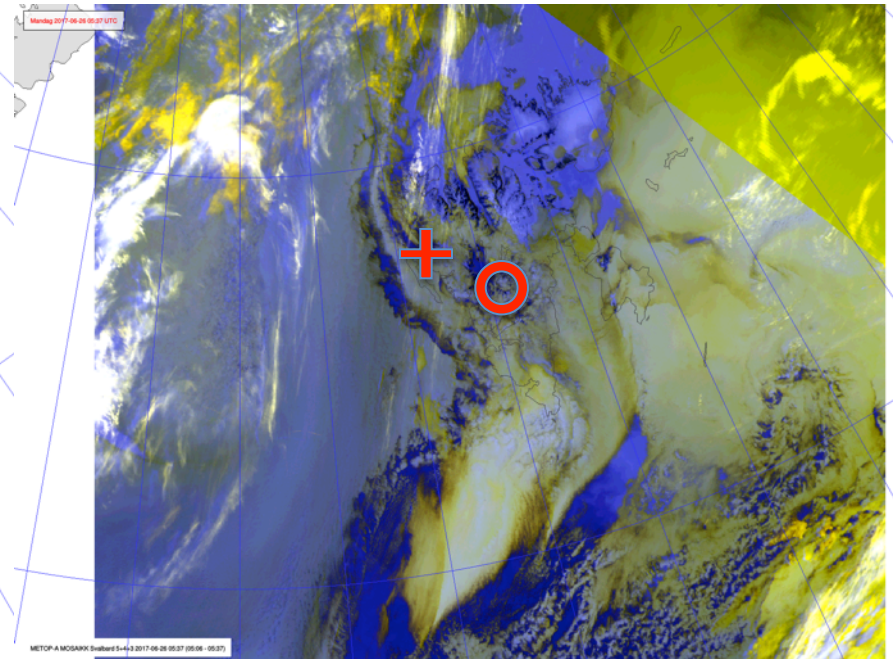
Satellite images

Mon Jun 26
05:37 UTC

+ Ny-Ålesund
○ Longyearbyen



VIS + IR



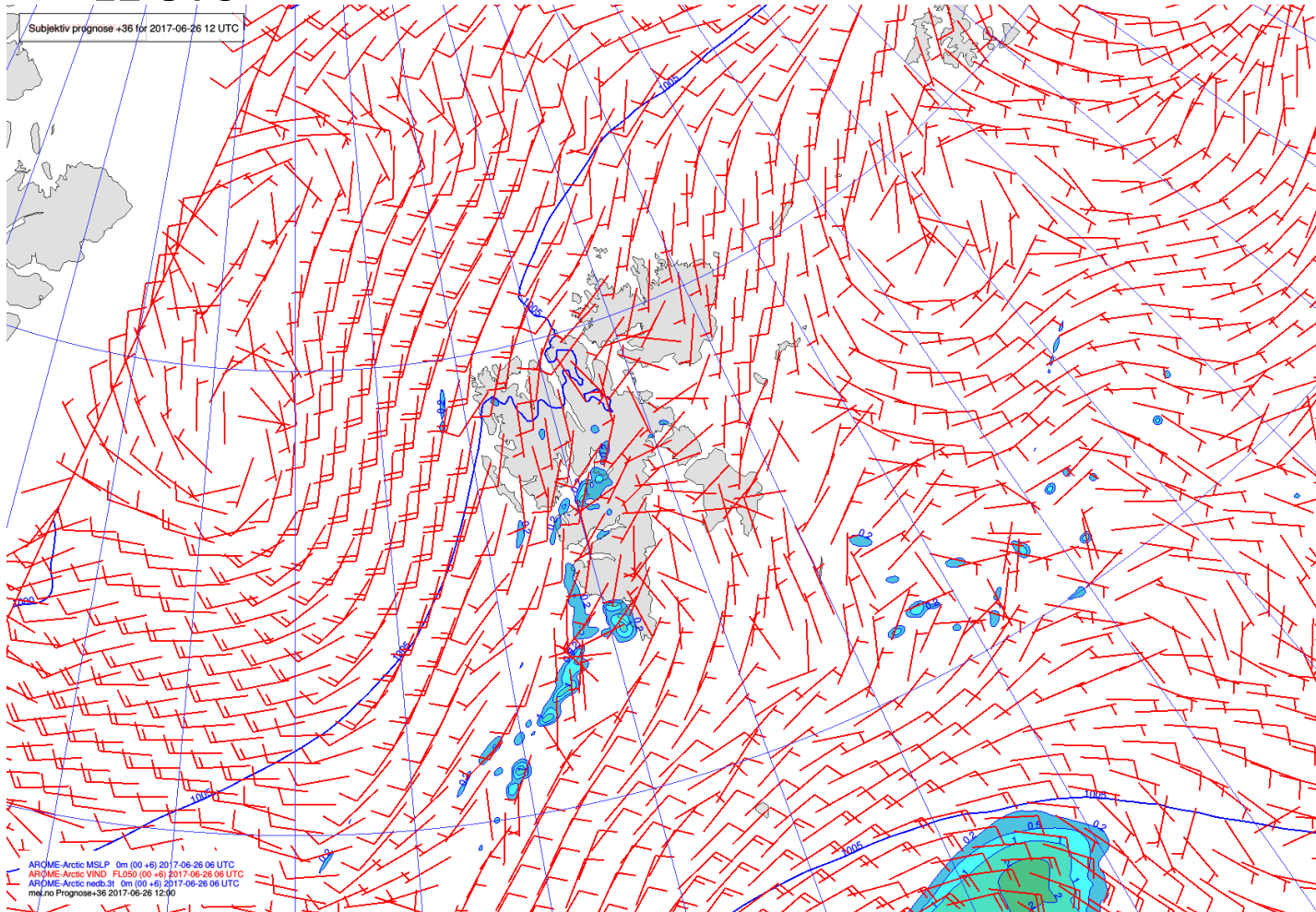
NOAA-19

IR 5+4+3

MSLP / v_{FL050} / Fronts / Precipitation

Mon Jun 26

12 UTC

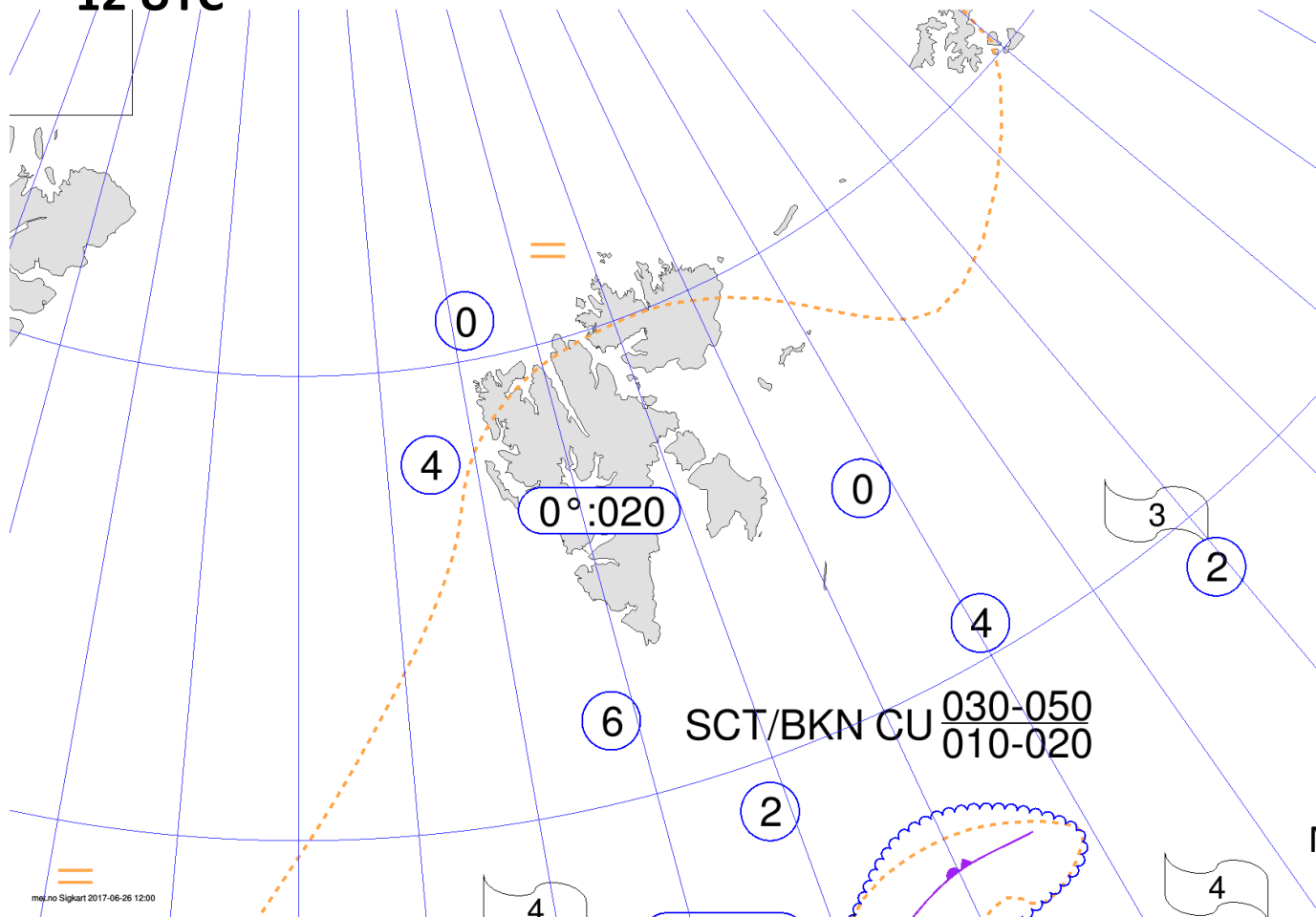


AROME-
Arctic

Significant weather chart

Mon Jun 26

12 UTC



Norwegian
Meteorological
Institute

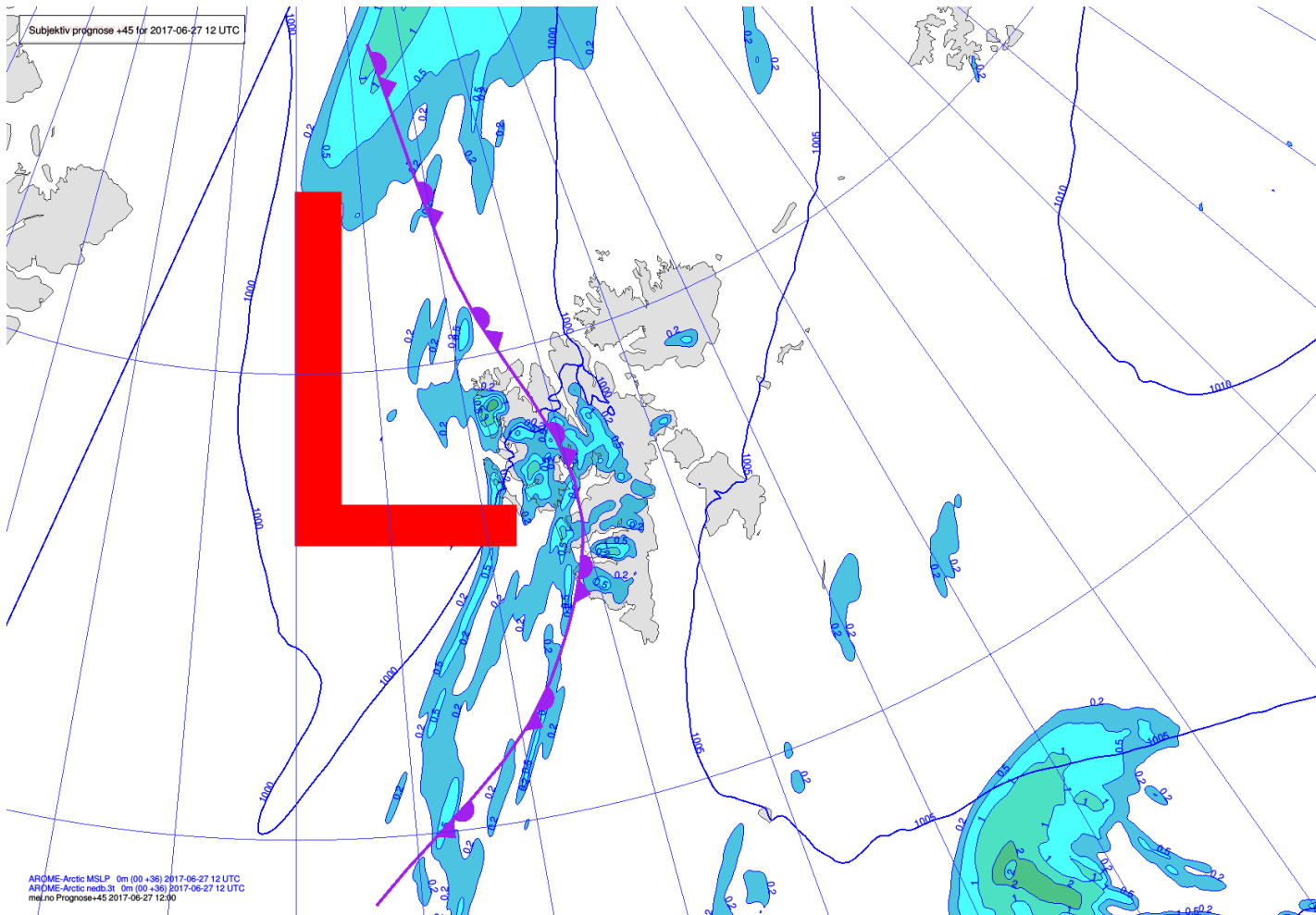
METAR and TAF

- Longyearbyen/Longyear (ENSB):
 - METAR 260720Z 26010KT 9999 VCSH FEW015 BKN037 06/01 Q1005 NOSIG RMK WIND 1400FT 26009KT
 - TAF 260500Z 2606/2706 26008KT 9999 FEW020 BKN030 PROB30 TEMPO 2606/2706 BKN012
 - No SIGMET/AIRMET
- Ny-Ålesund/Hamnerabben (ENAS):
 - METAR 260550Z 19009KT 9999 BKN029 06/M01 Q1005
 - NOTAM DAILY 0600-1600 UNMANNED ACFT IN NY ALESUND AREA PSN 7856N 01231E, RADIUS 5NM, LOWER LIM: GND, UPPER LIM: 400FT AMSL
- Svea (ENSA):
 - METAR NIL

Forecast
Tue 27 June 2017

MSLP / Fronts / Precipitation

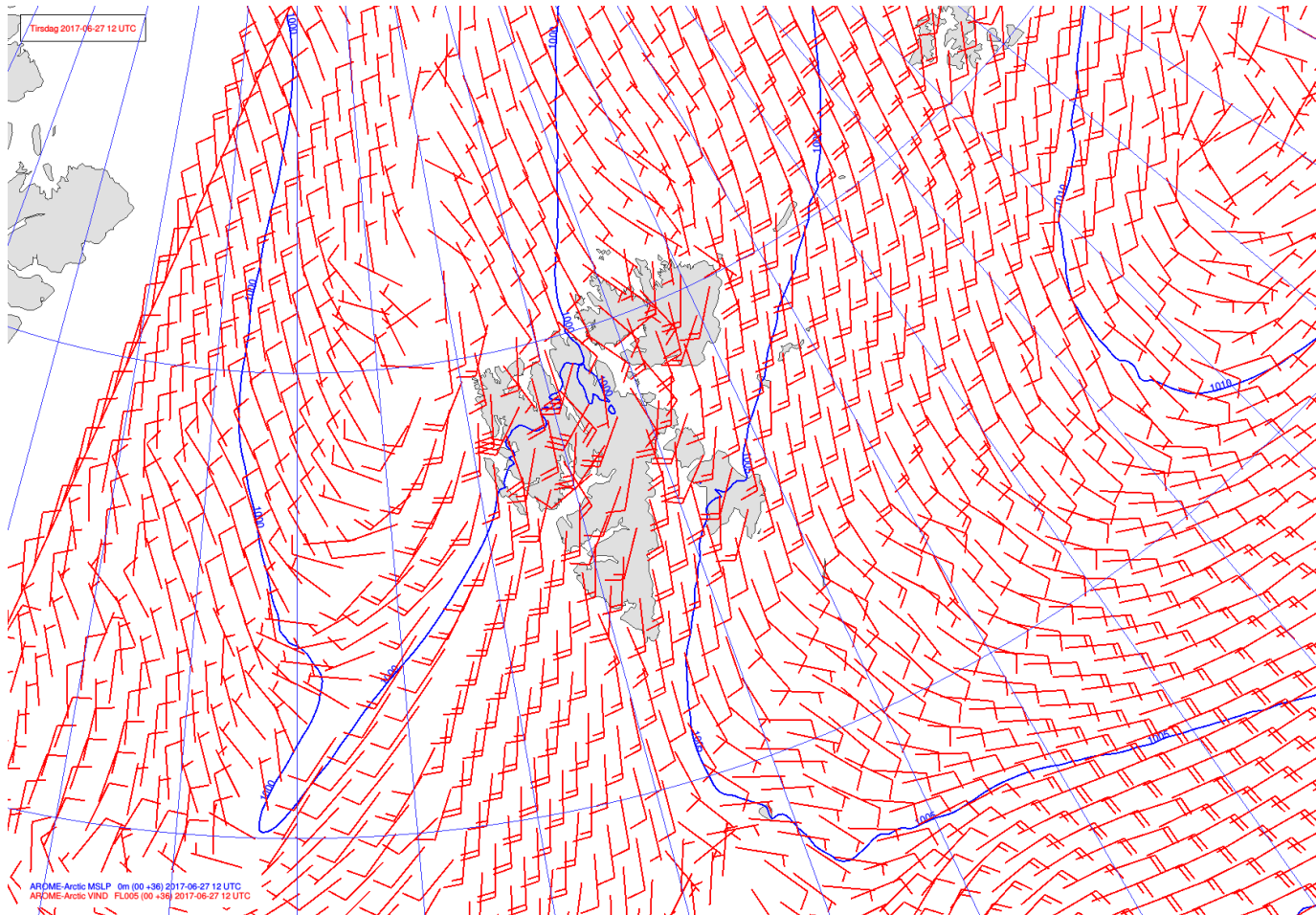
Tue Jun 27
12 UTC



AROME-
Arctic

MSLP / V_{FL005}

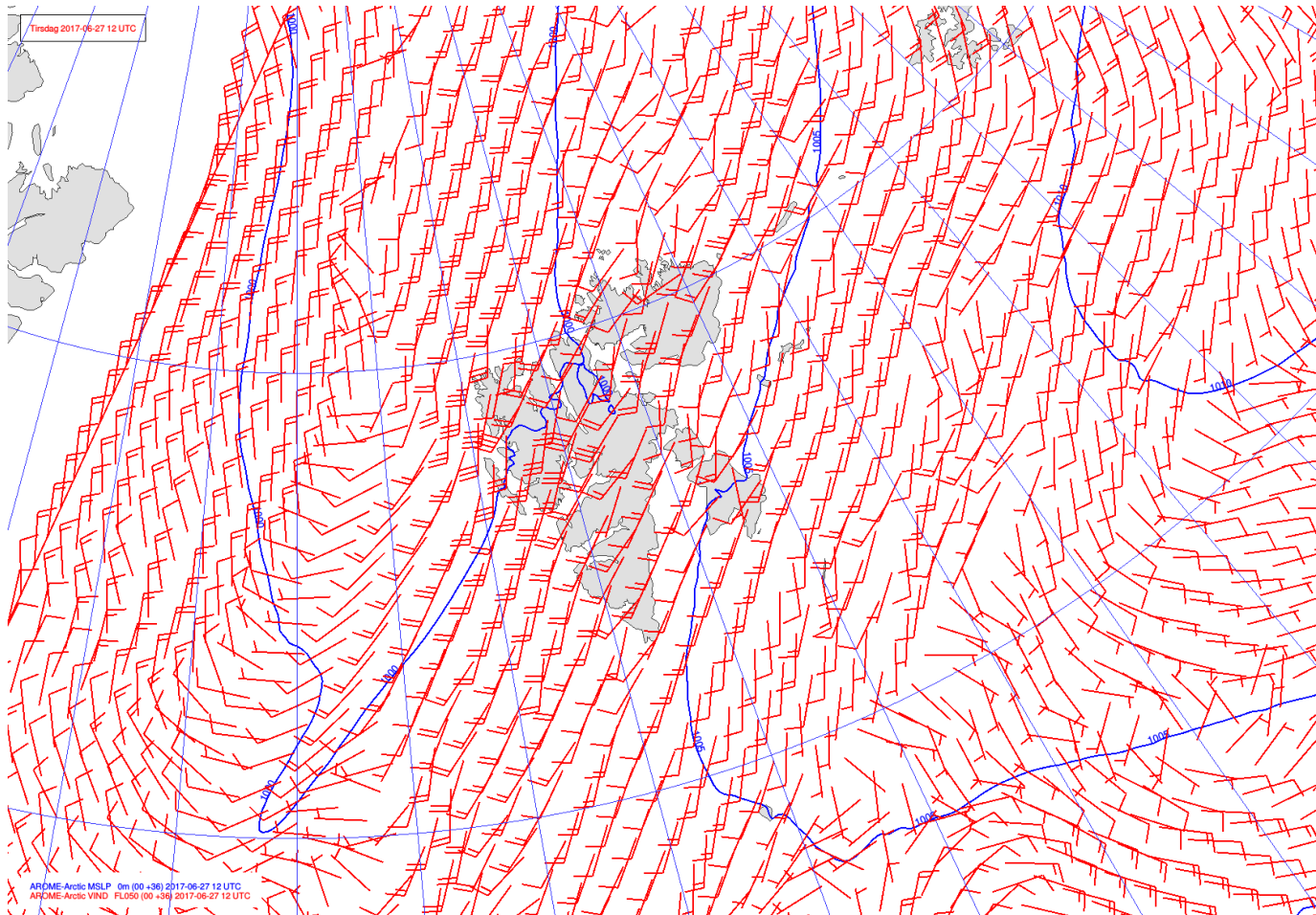
**Tue Jun 27
12 UTC**



AROME-
Arctic

MSLP / V_{FL050}

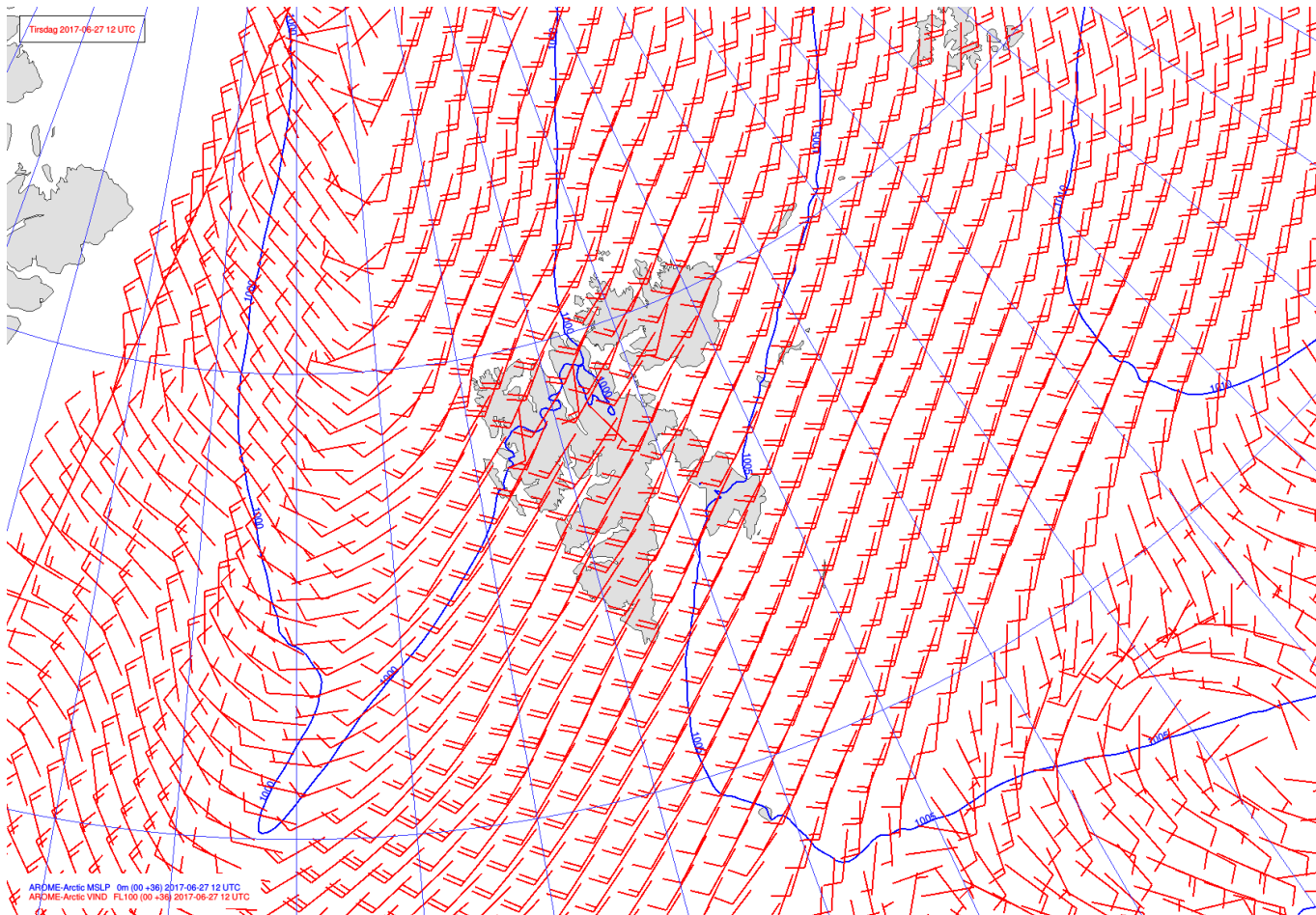
Tue Jun 27
12 UTC



AROME-
Arctic

MSLP / V_{FL100}

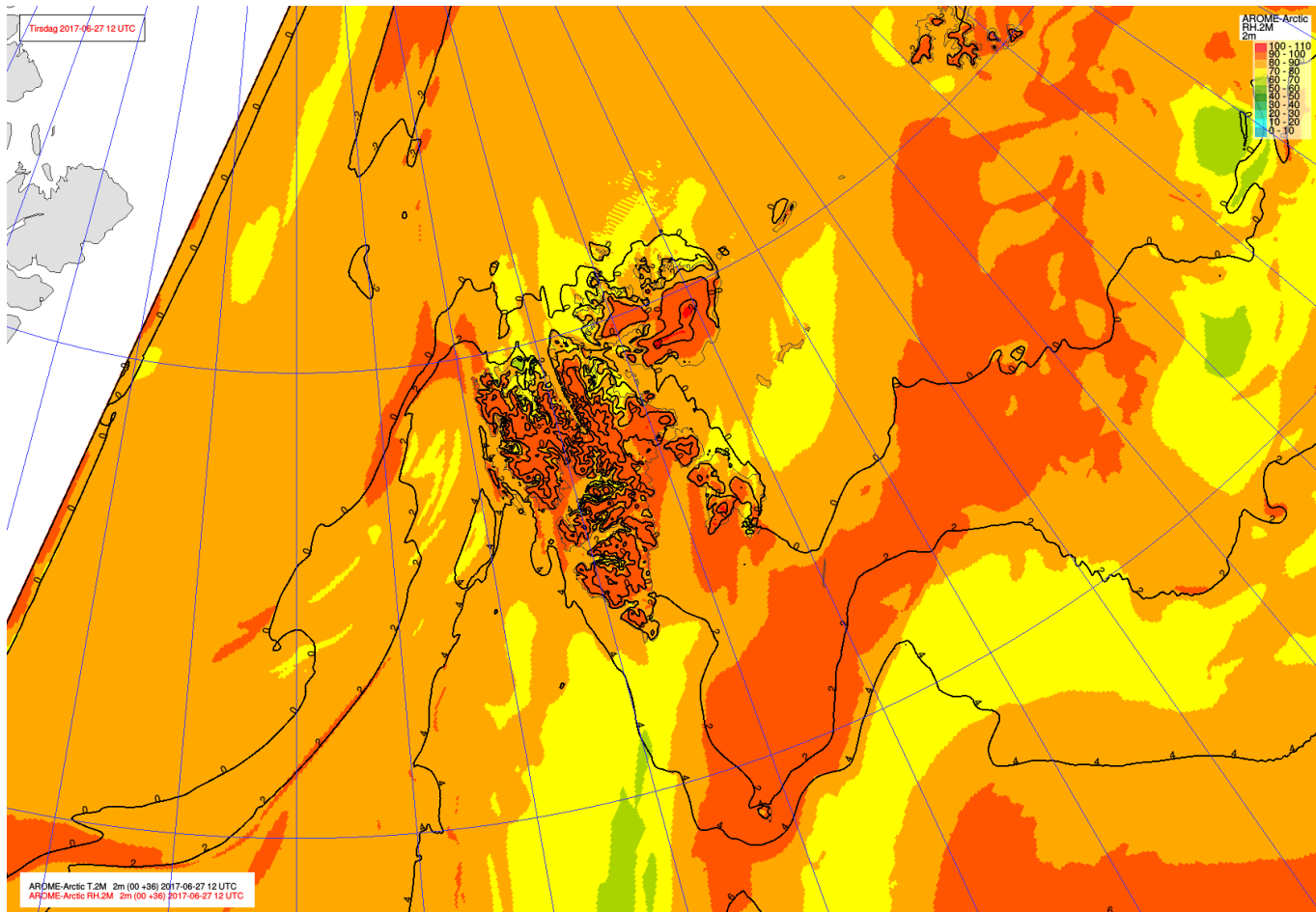
Tue Jun 27
12 UTC



AROME-
Arctic

T_{2m} / RH_{2m}

Tue Jun 27
12 UTC



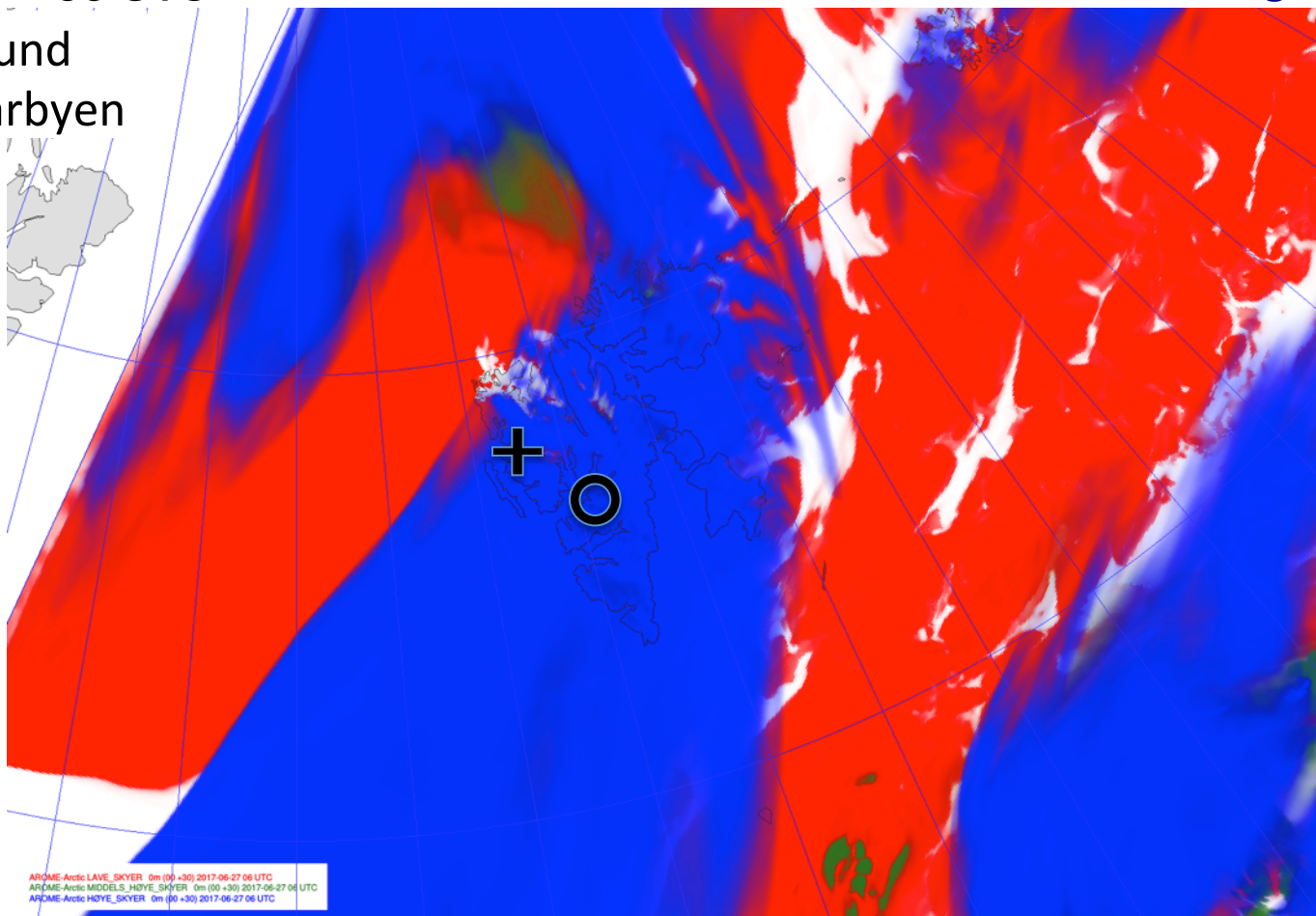
AROME-
Arctic

Cloud cover

Tue Jun 27
06 UTC

Low / Mid / High

+ Ny-Ålesund
○ Longyearbyen



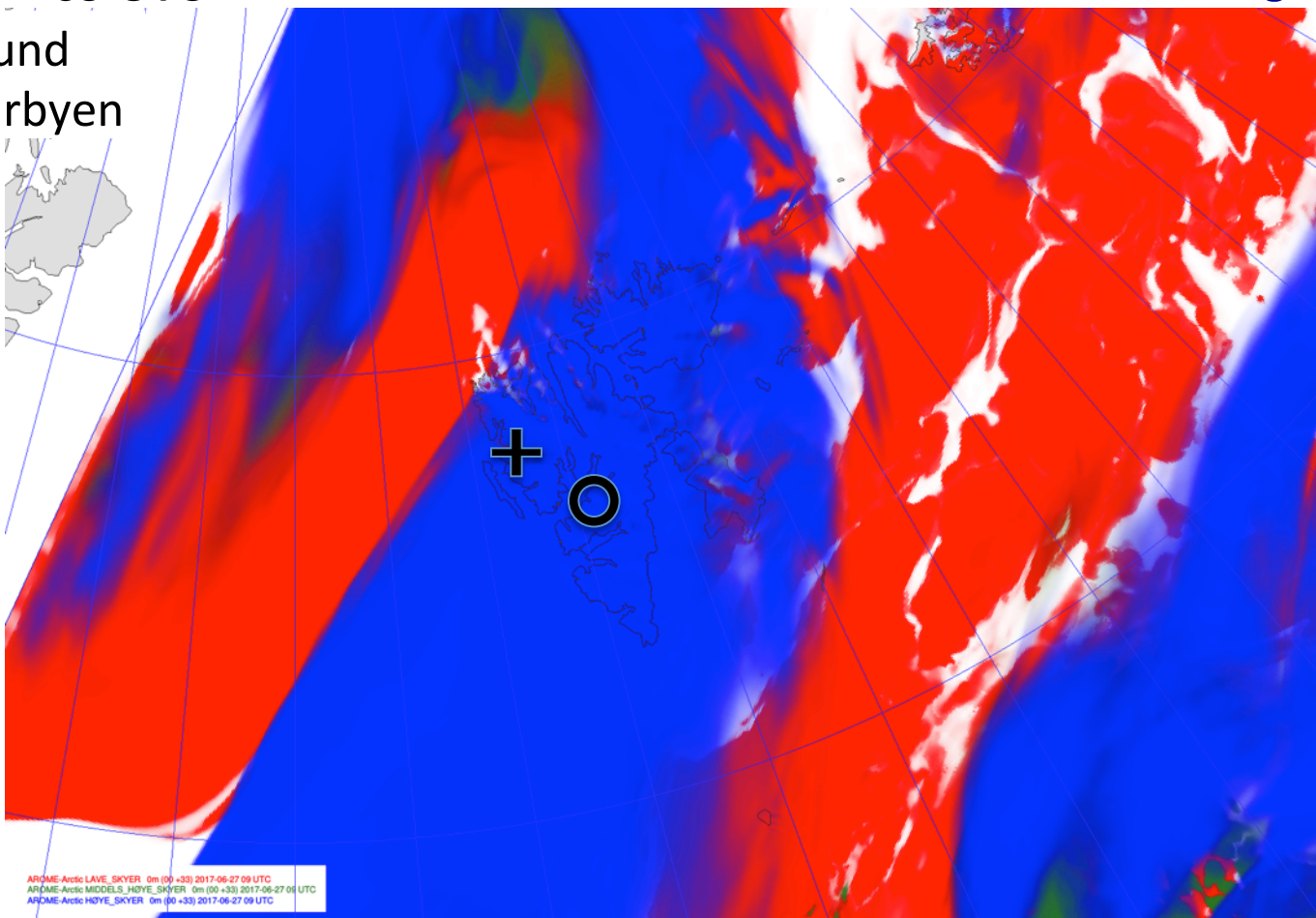
AROME-
Arctic

Cloud cover

Tue Jun 27
09 UTC

Low / Mid / High

+ Ny-Ålesund
○ Longyearbyen



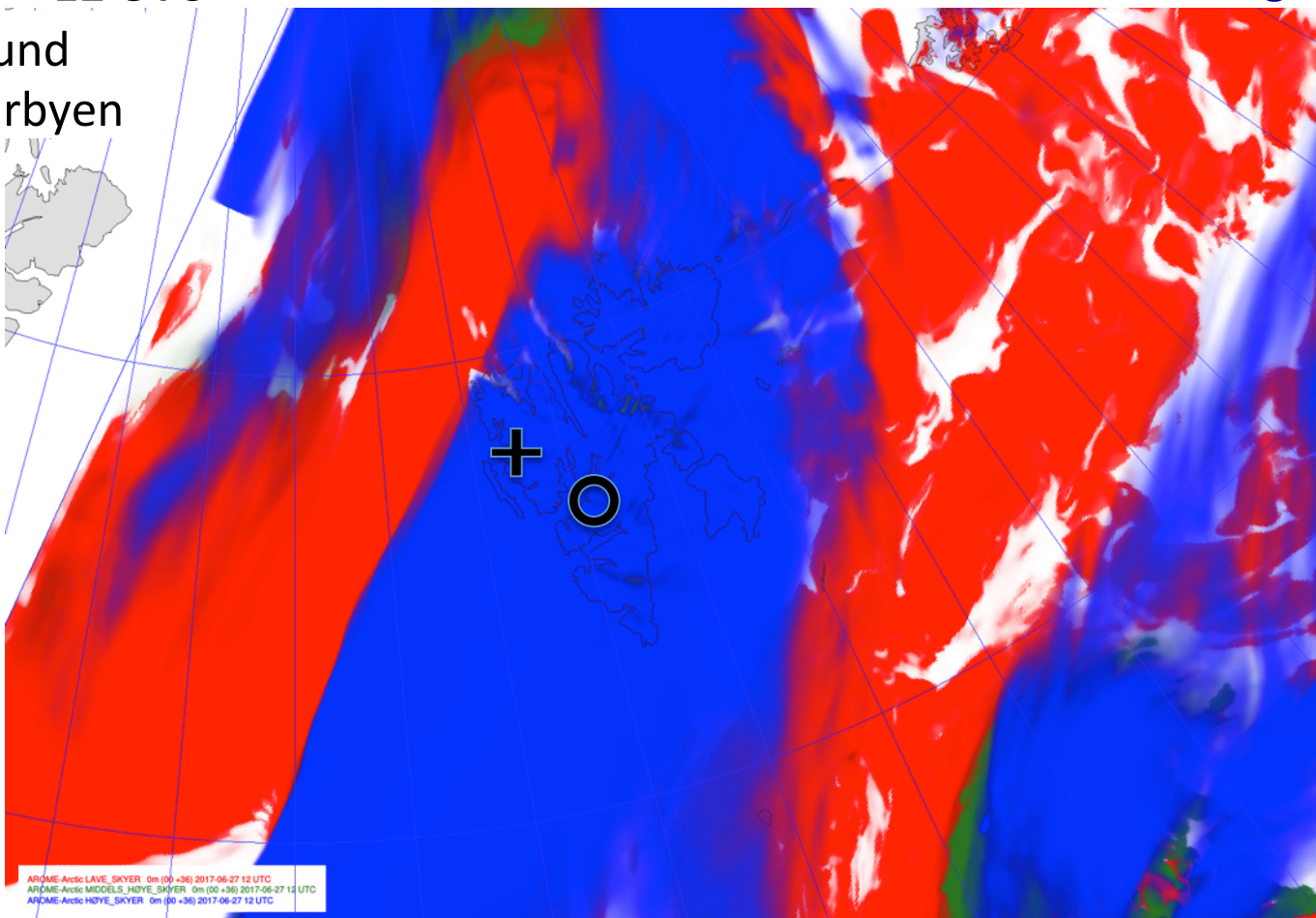
AROME-
Arctic

Cloud cover

Tue Jun 27
12 UTC

Low / Mid / High

+ Ny-Ålesund
○ Longyearbyen



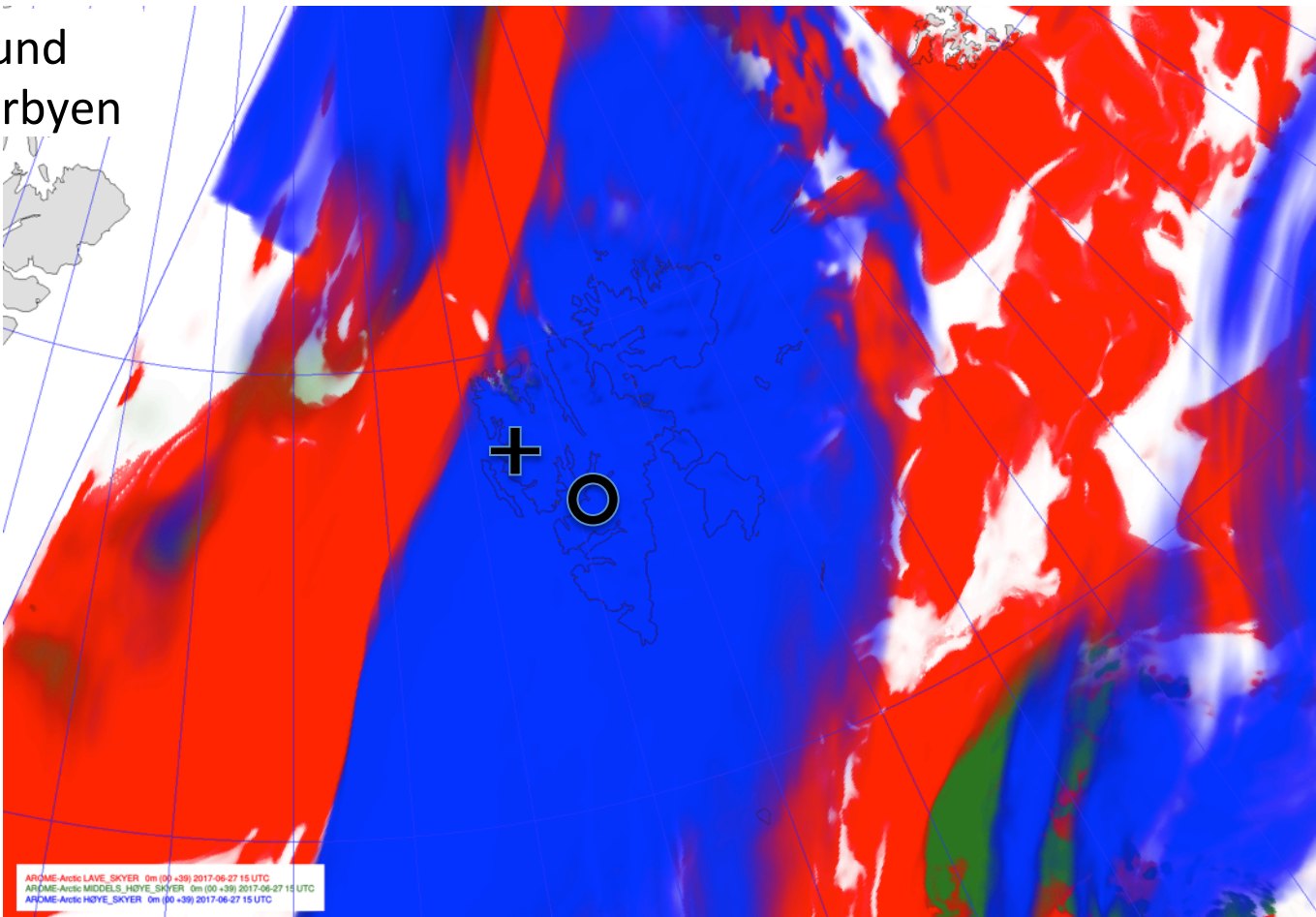
AROME-
Arctic

Cloud cover

Tue Jun 27
15 UTC

Low / Mid / High

+ Ny-Ålesund
○ Longyearbyen



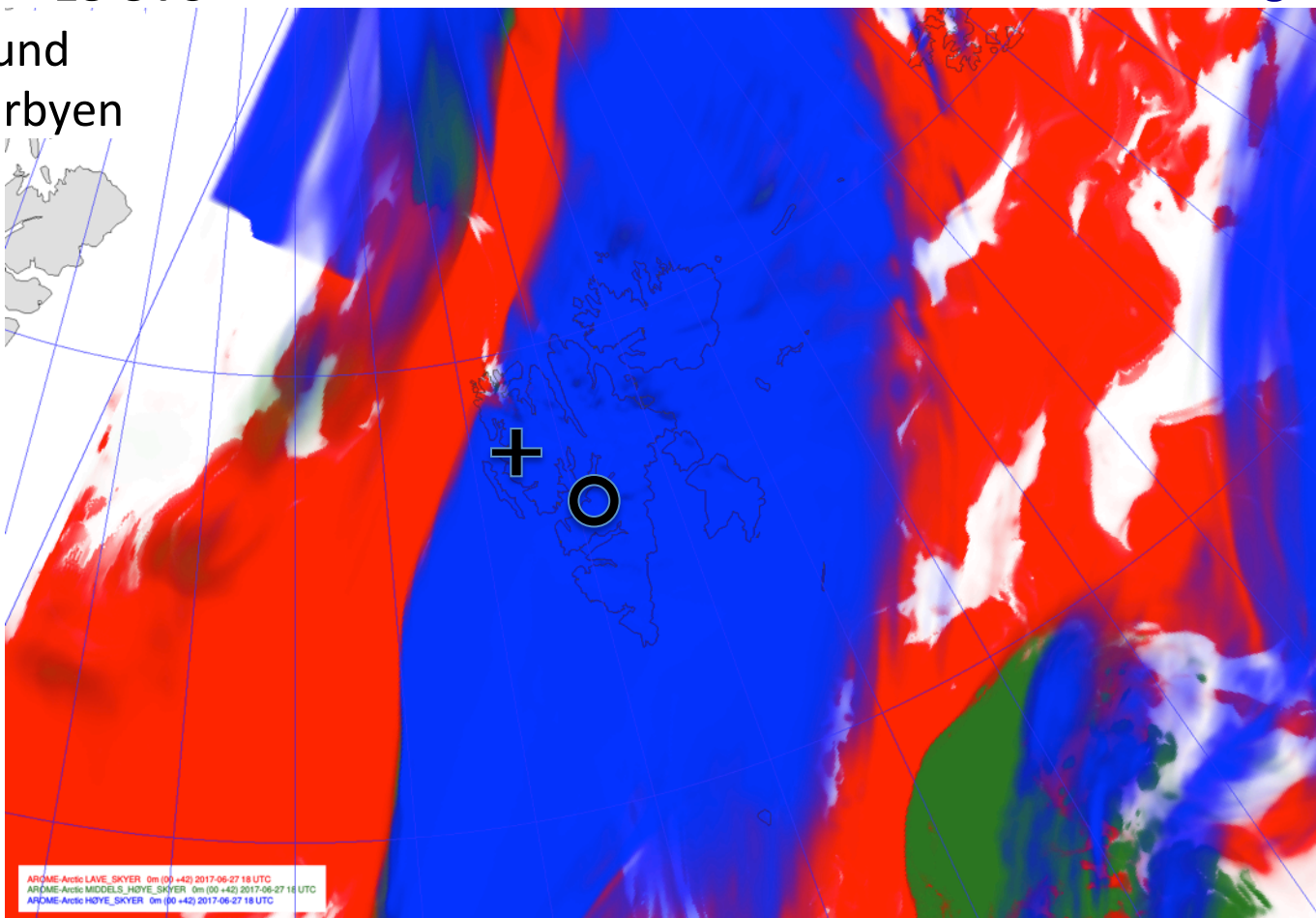
AROME-
Arctic

Cloud cover

Tue Jun 27
18 UTC

Low / Mid / High

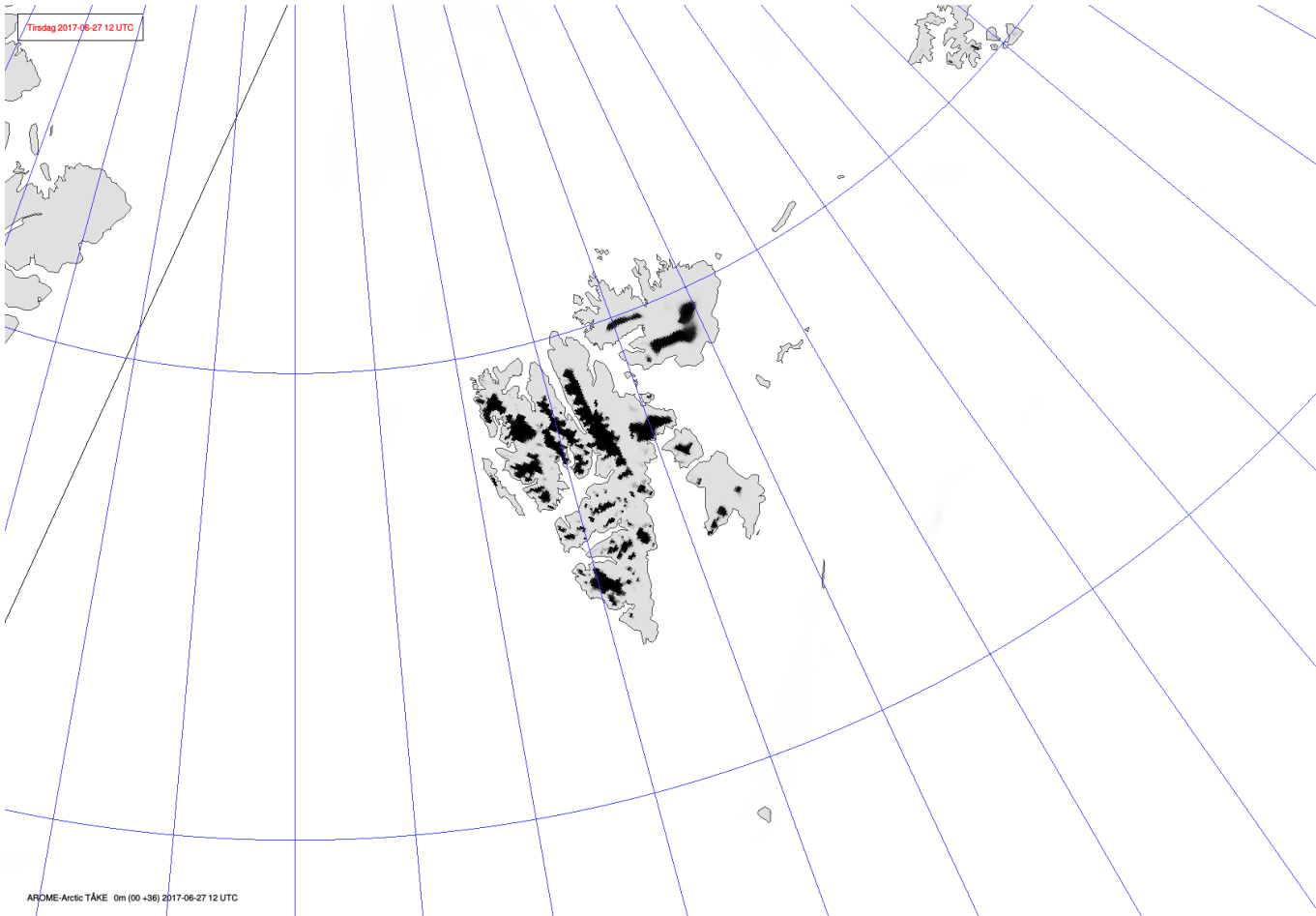
+ Ny-Ålesund
○ Longyearbyen



AROME-
Arctic

Fog

Tue Jun 27
12 UTC

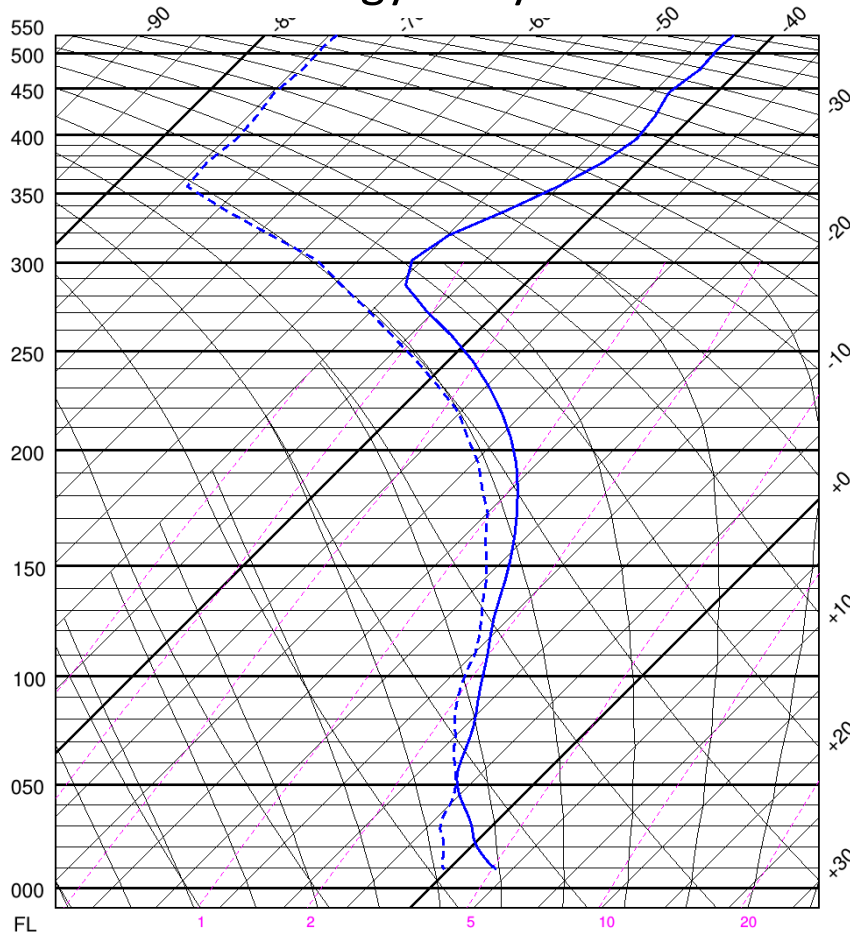


**AROME-
Arctic**

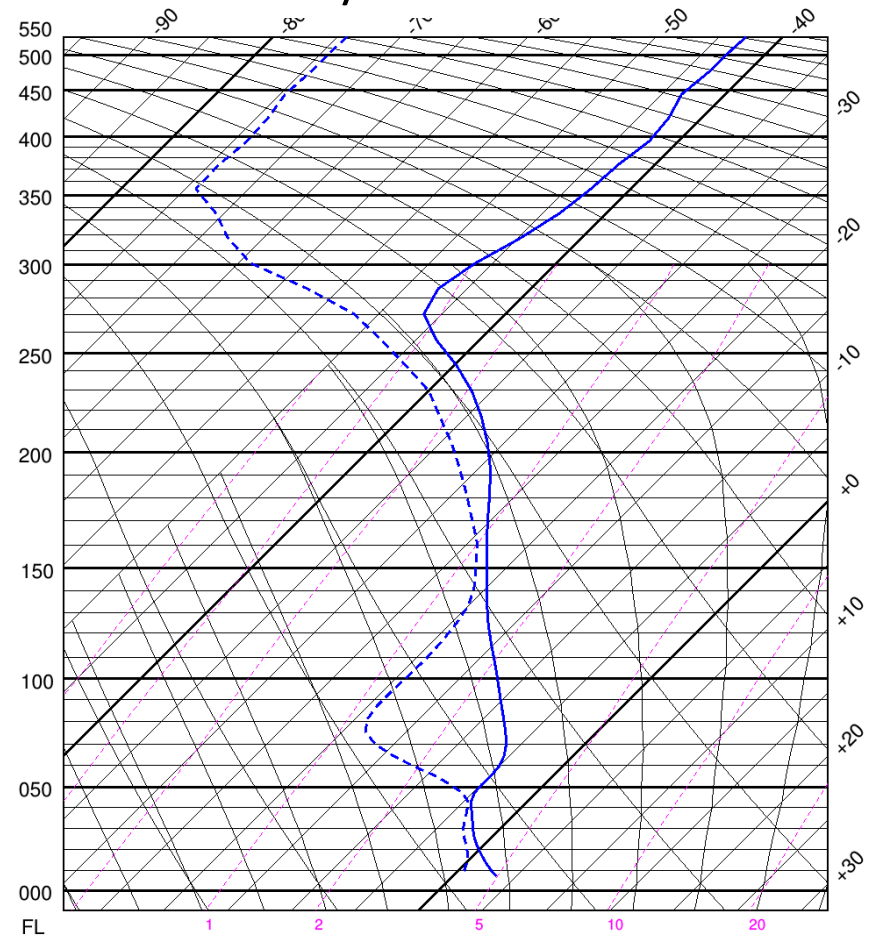
Vertical profiles

**Tue Jun 27
12 UTC**

Longyearbyen



Ny-Ålesund

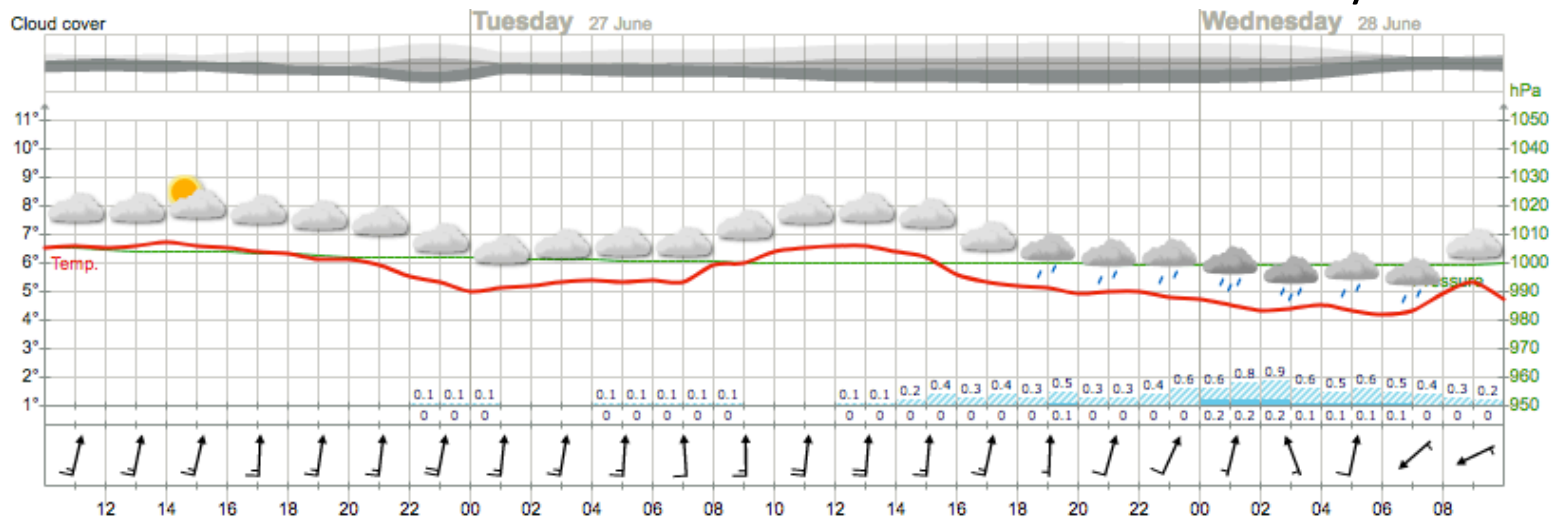


AROME-Arctic

Outlook

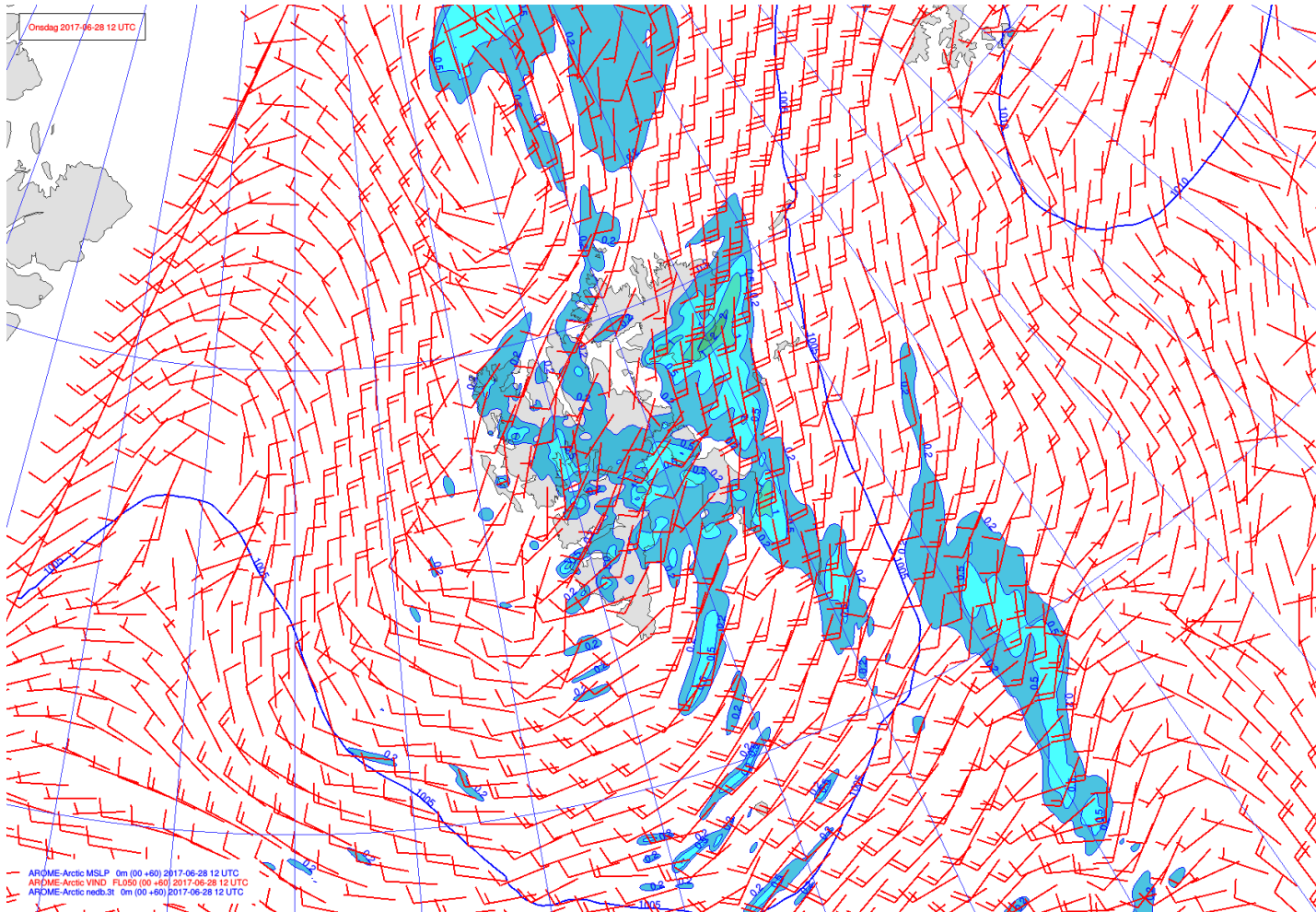
Wed 28 June 2017

Longyearbyen



MSLP / v_{FL050} / Precipitation

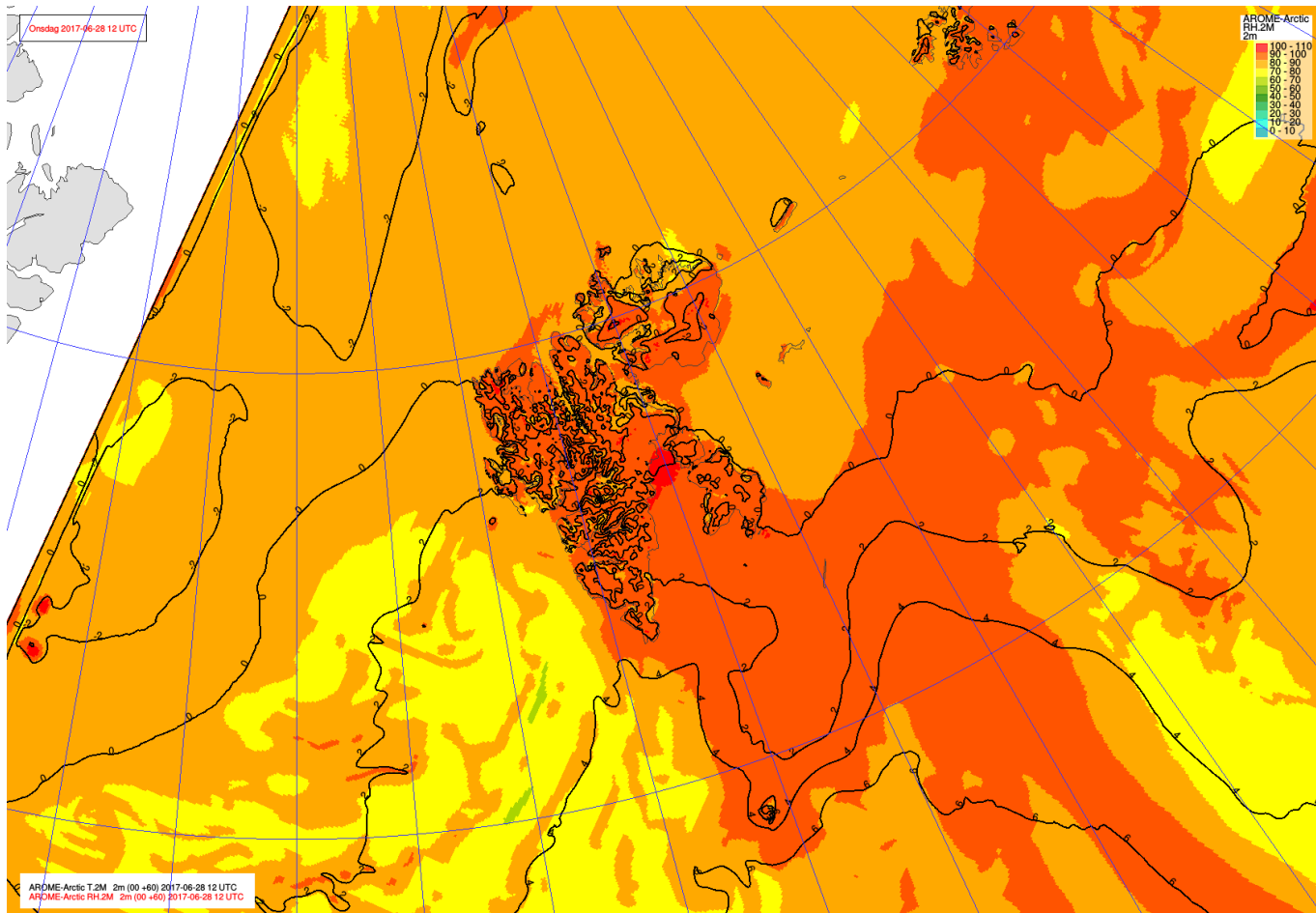
Wed Jun 28
12 UTC



AROME-
Arctic

T_{2m} / RH_{2m}

Wed Jun 28
12 UTC



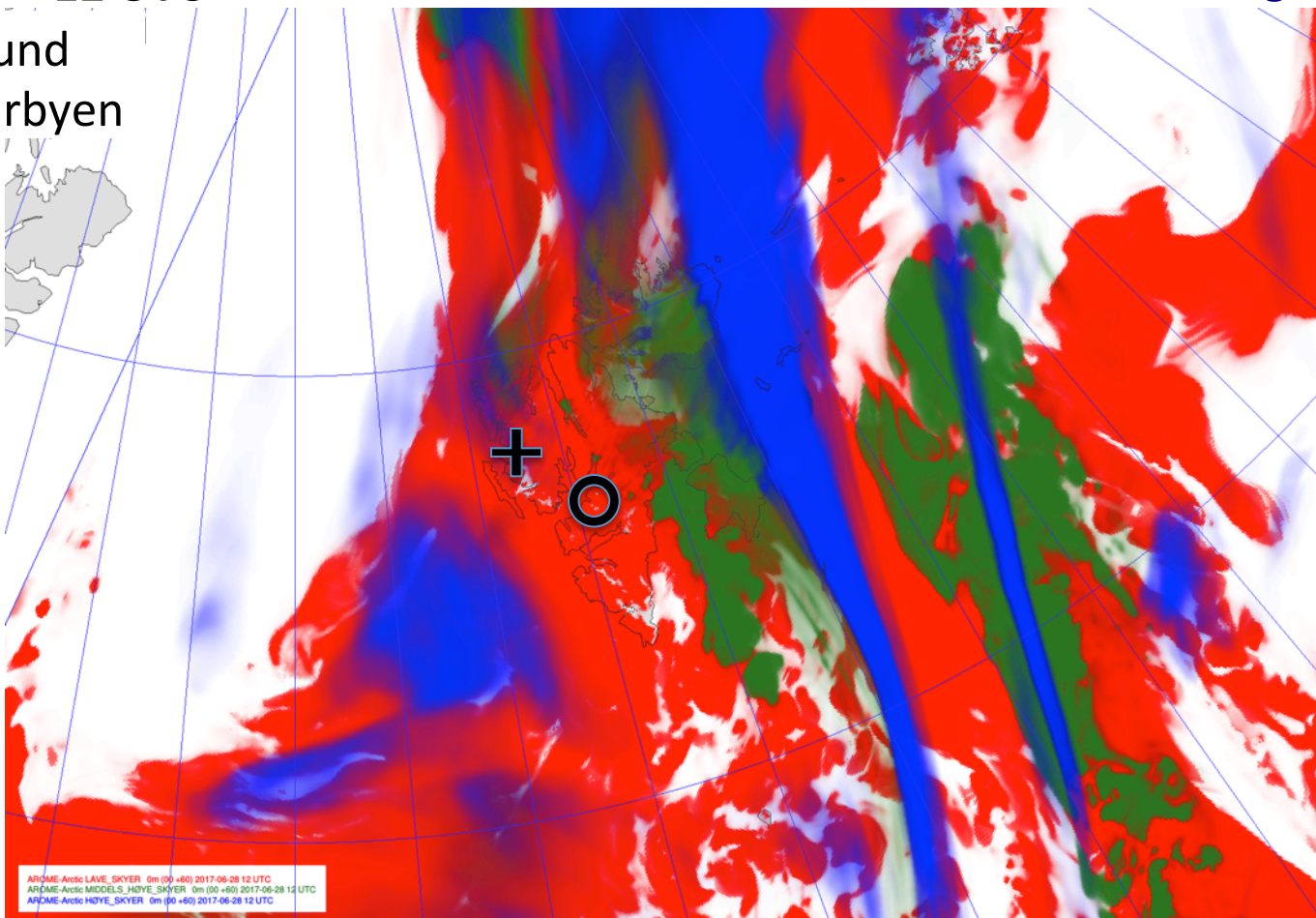
AROME-
Arctic

Cloud cover

Wed Jun 28
12 UTC

Low / Mid / High

+ Ny-Ålesund
○ Longyearbyen



AROME-
Arctic

Fog

Wed Jun 28
12 UTC

