

Weather briefing ACLOUD

From Sat 17 June 2017
for Sun 18 June 2017
and next three days

Summary

The low pressure system west of us dissipates, leaving a chance of some rain showers over the first part of tomorrow. A new low with an occluded front moving into the southern part of the region Monday, but probably not affecting us much.

Mainly W 7.5-10.0 kt winds over western Spitsbergen and off its coast, weakening and becoming variable into tomorrow. In the north, W-N 5-10 kt wind. Mainly W 2.5-5.0 kt in Longyearbyen.

Mid-level clouds associated with the remains of the low pressure system. Otherwise, mainly low clouds, but Isfjorden becoming cloud-free over the day tomorrow.

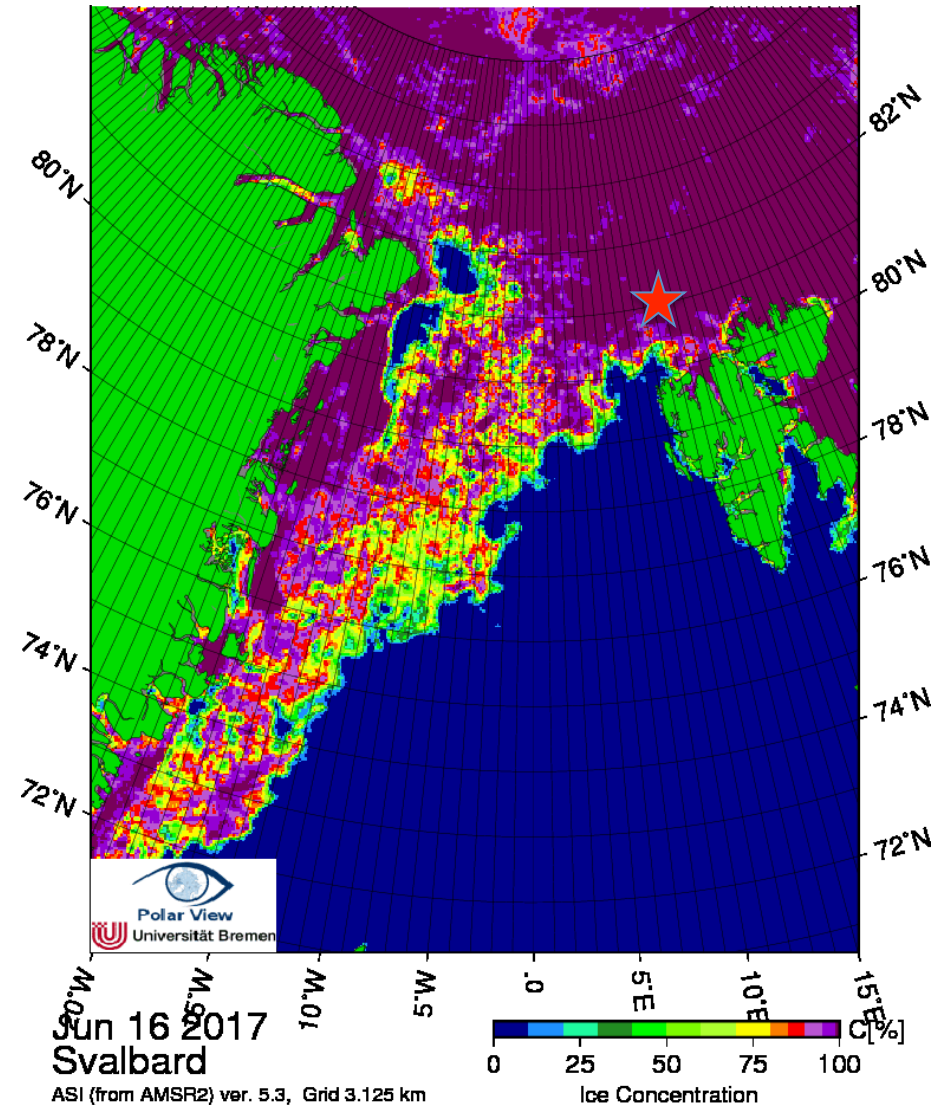
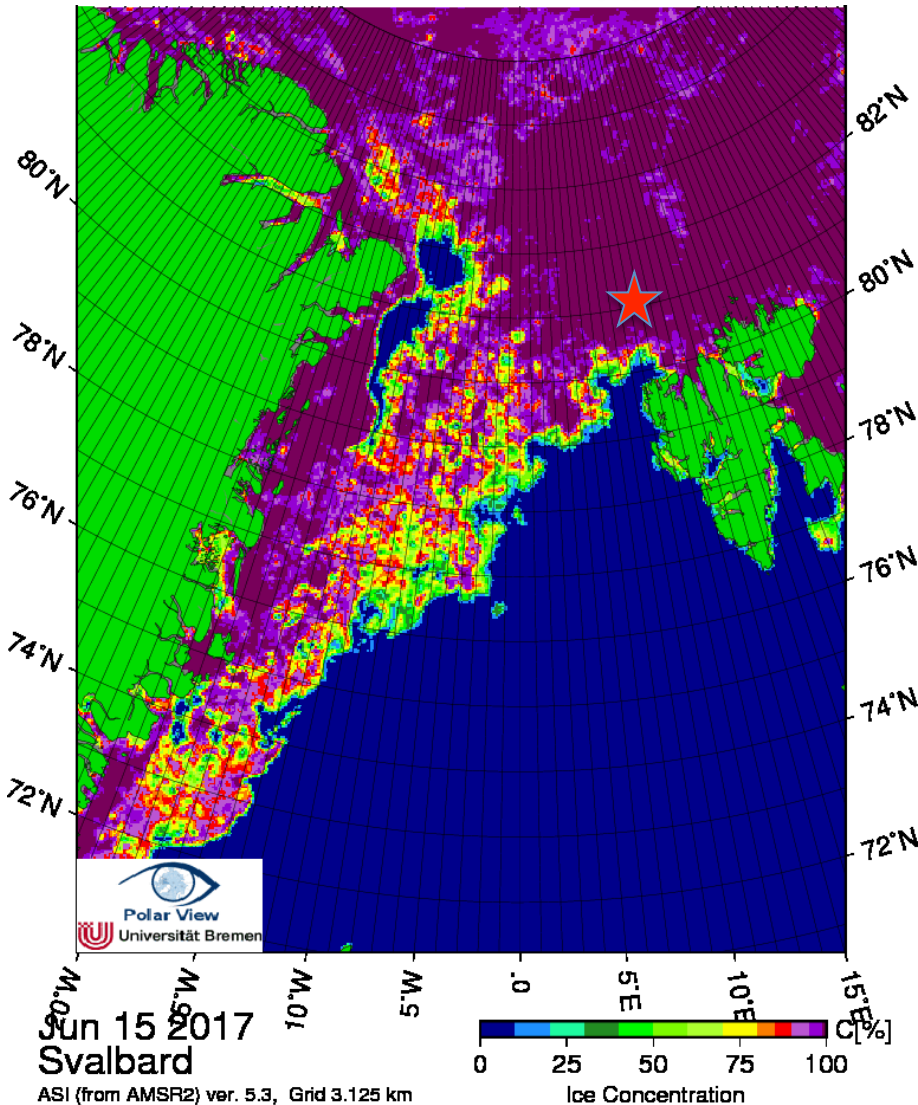
Observations and nowcast
Thu 15 – Sat 17 June 2017

Sea ice concentration

Thu Jun 15

★ Polarstern (Sat Jun 17 07 UTC)

Fri Jun 16



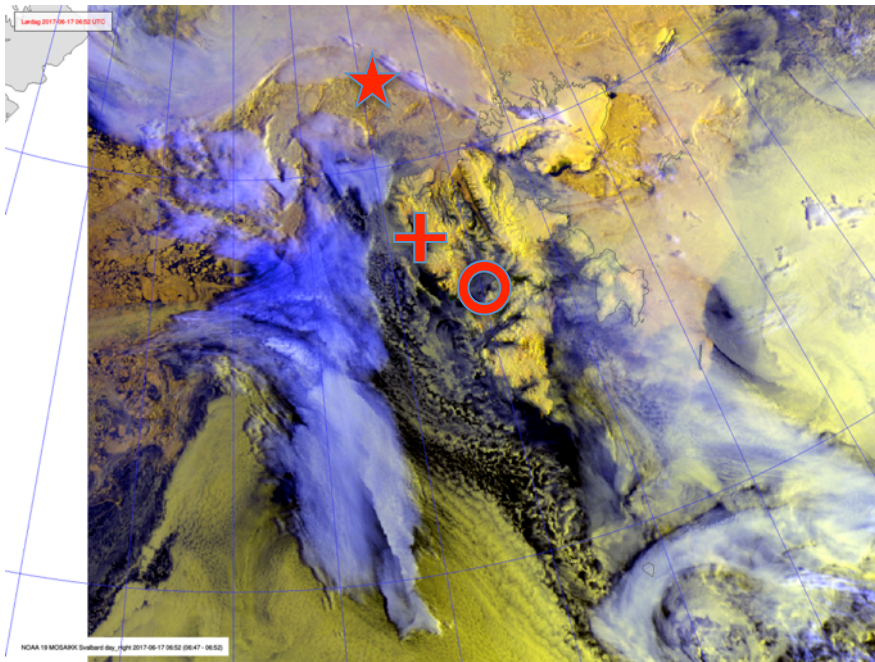
Satellite image

Sat Jun 17
06:52 UTC

★ Polarstern (07 UTC)

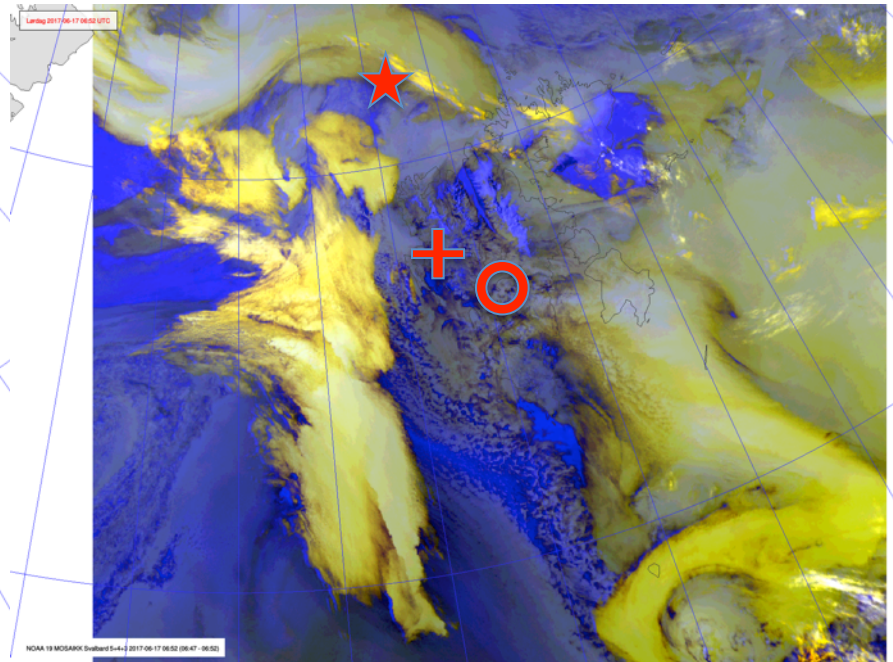
+ Ny-Ålesund

○ Longyearbyen



VIS + IR

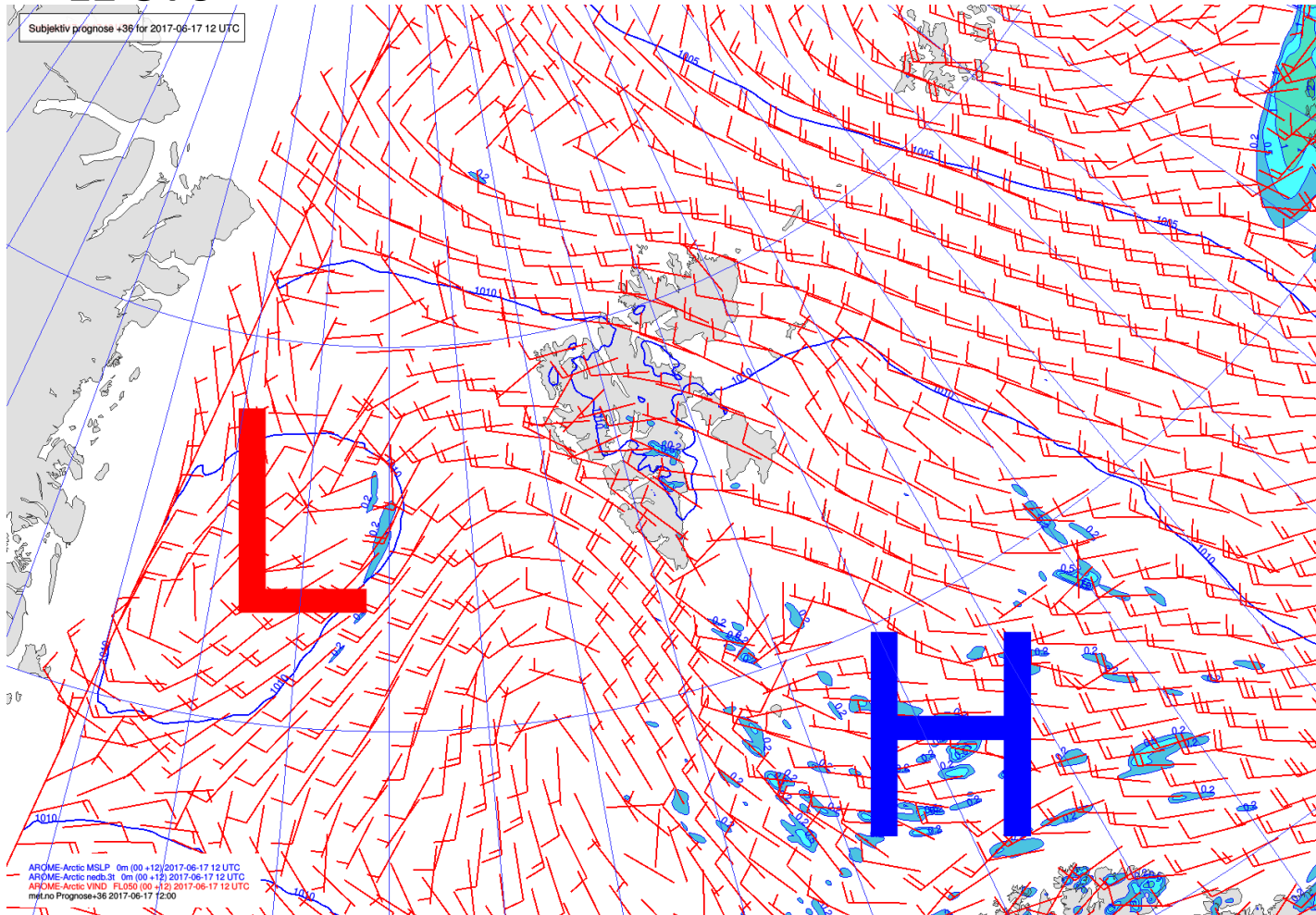
NOAA-19



IR 5+4+3

MSLP / v_{FL050} / Fronts / Precipitation

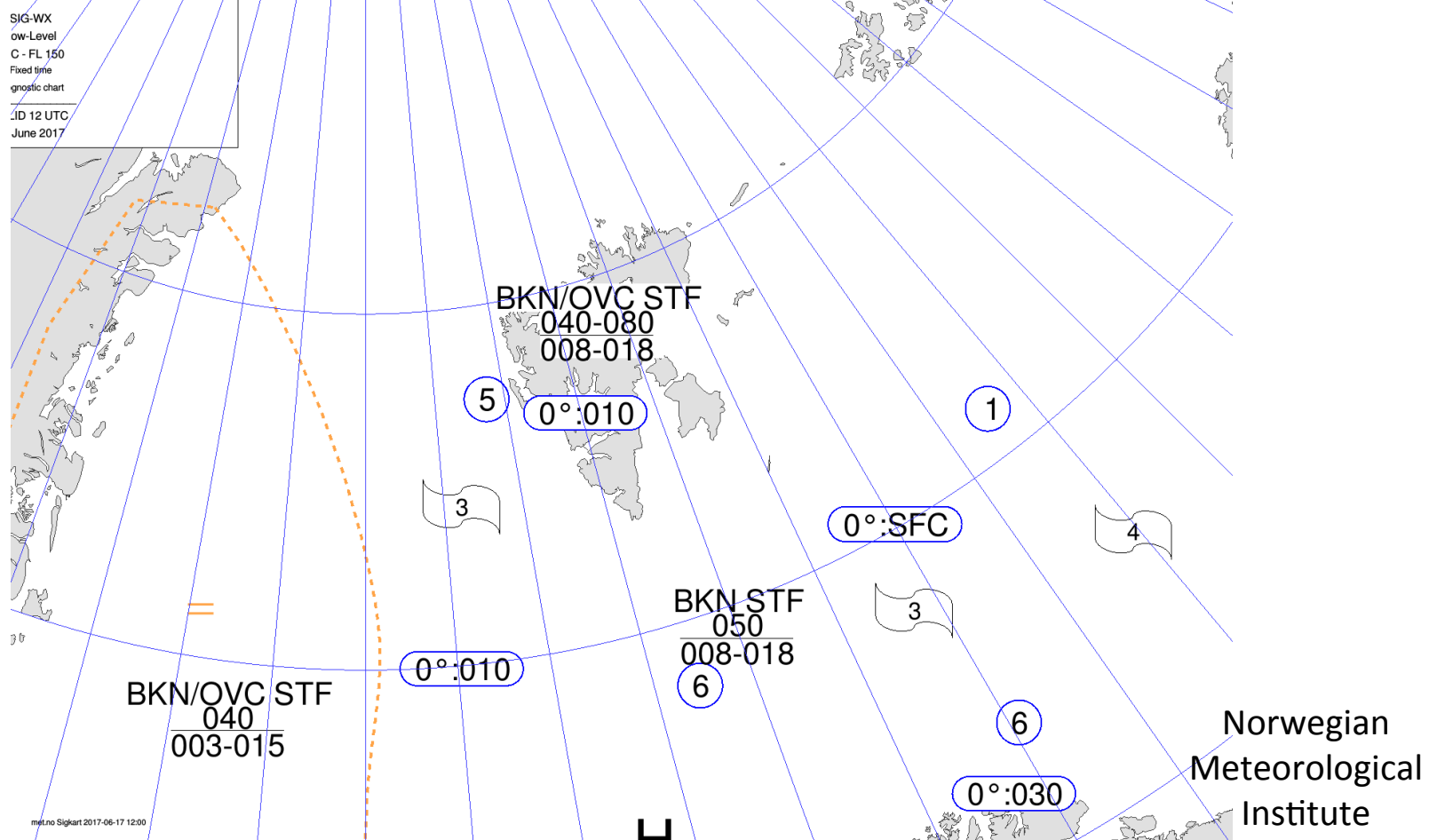
Sat Jun 17
12 UTC



AROME-
Arctic

Significant weather chart

Sat Jun 17
12 UTC



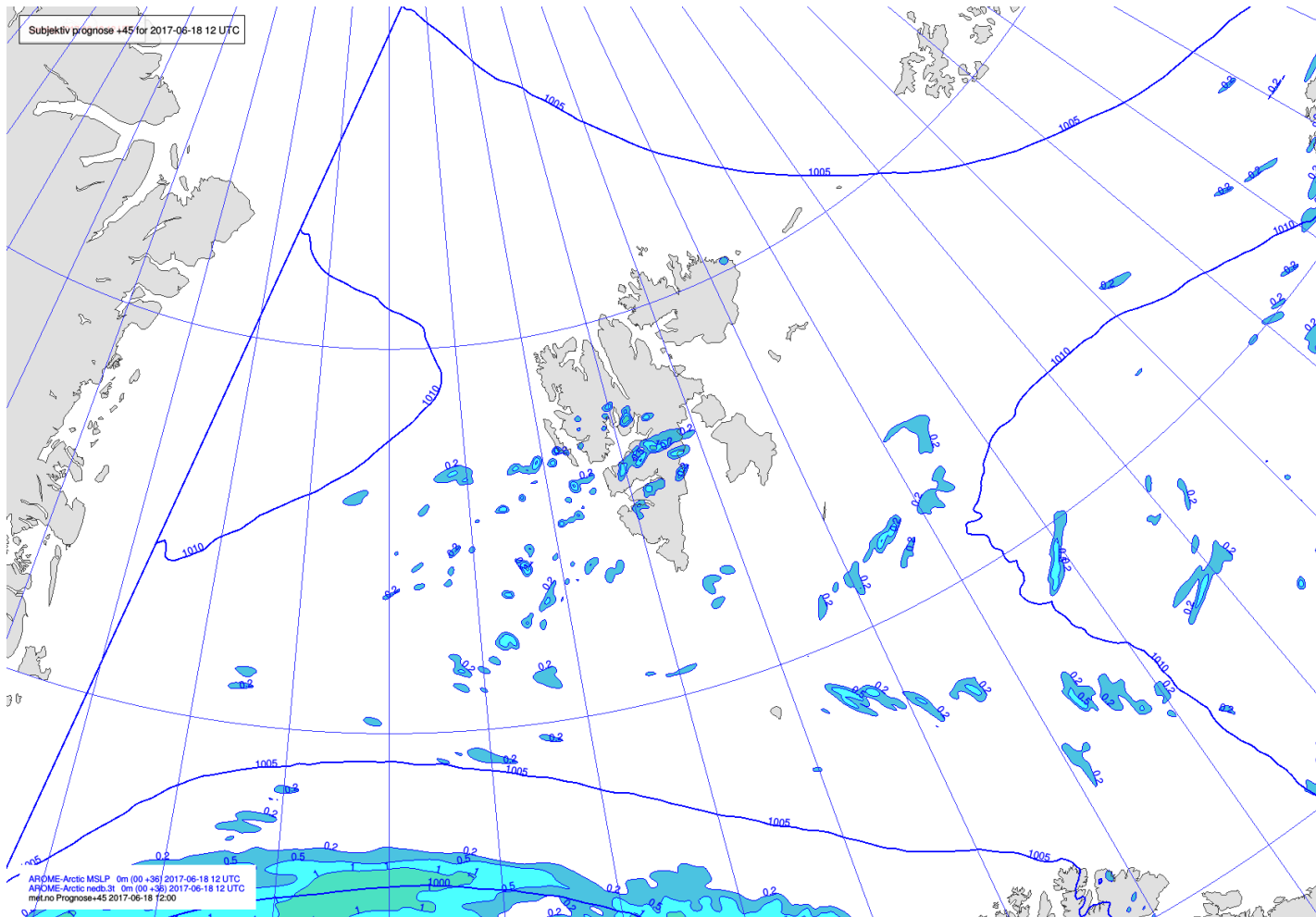
METAR and TAF

- Longyearbyen/Longyear (ENSB):
 - METAR 170750Z 26009KT 9999 SCT015 BKN030 04/01 Q1009 RMK WIND 1400FT 23004KT
 - TAF 170500Z 1706/1806 25008KT 9999 FEW009 BKN018 TEMPO 1706/1709 4000 -DZ SCT003 BKN006 TEMPO 1800/1806 BKN008
 - No SIGMET/AIRMET
- Ny-Ålesund/Hamnerabben (ENAS):
 - METAR NIL
 - AIRMET DAILY 0600-1600 UNMANNED ACFT WILL TAKE PLACE IN NY ALESUND AREA PSN 7856N 01231E, RADIUS 5NM, LOWER LIMIT: GND, UPPER LIMIT: 400FT AMSL
- Svea (ENSA):
 - METAR NIL

Forecast
Sun 18 June 2017

MSLP / Fronts / Precipitation

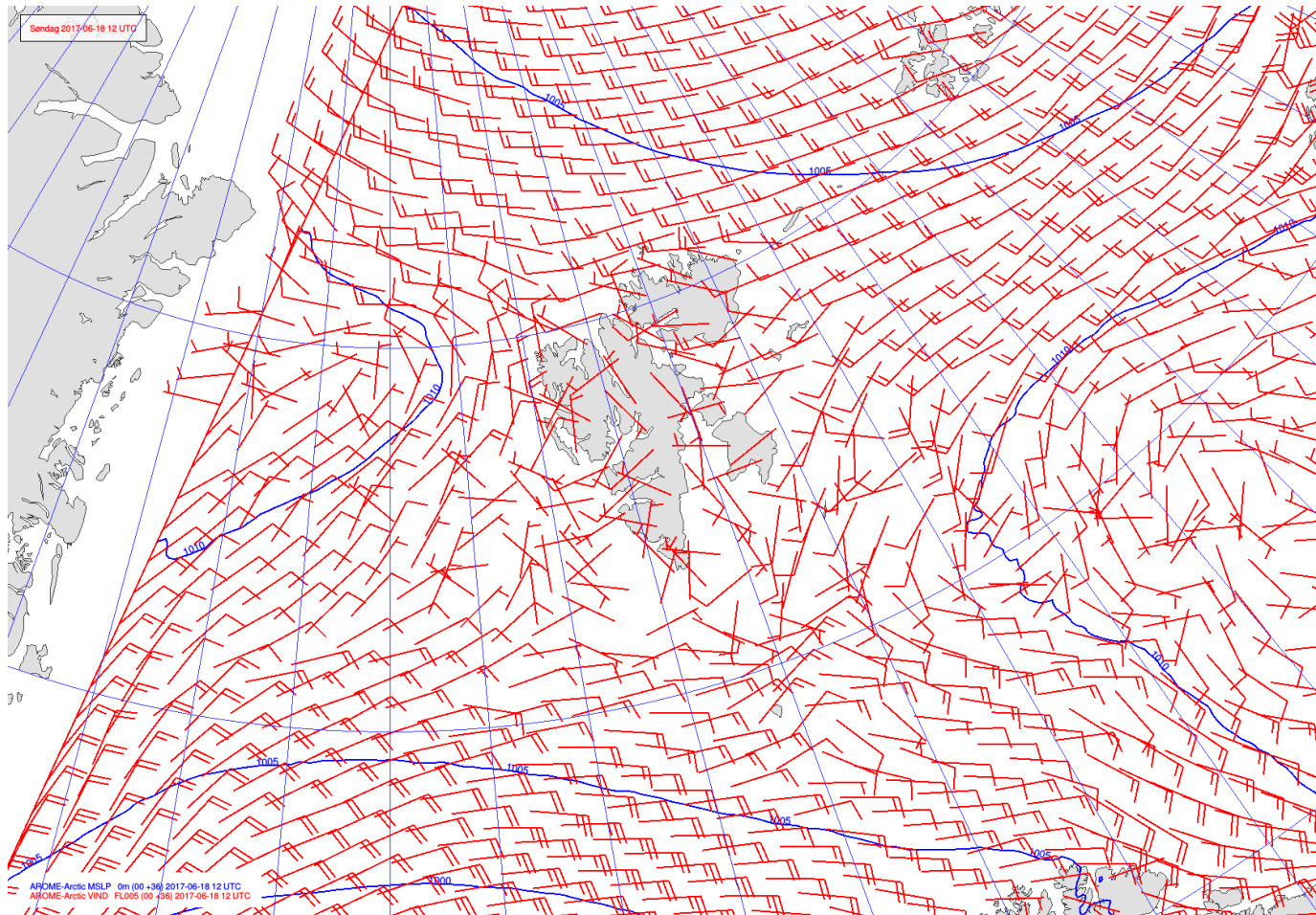
Sun Jun 18
12 UTC



AROME-
Arctic

MSLP / V_{FL005}

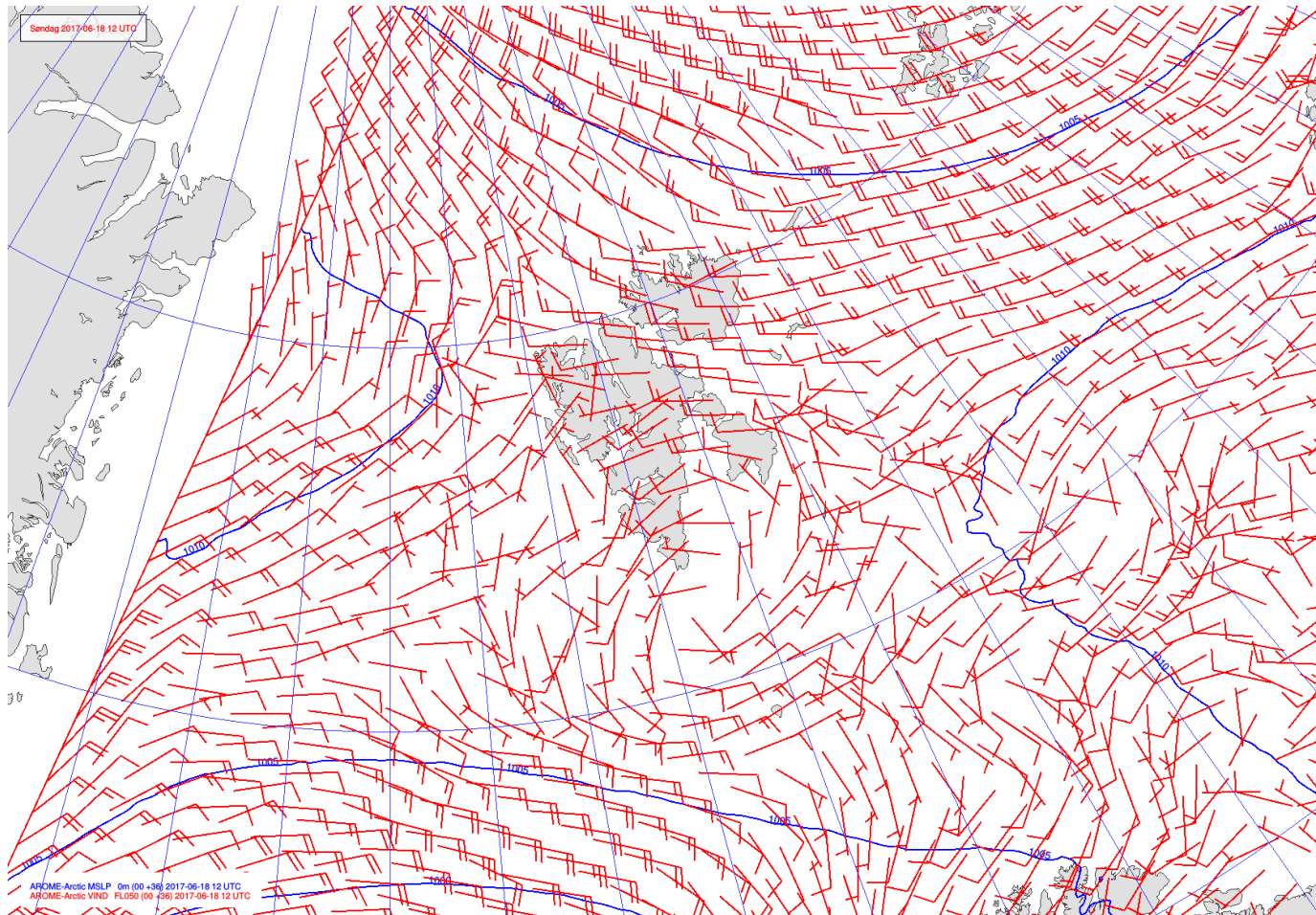
Sun Jun 18
12 UTC



AROME-
Arctic

MSLP / V_{FL050}

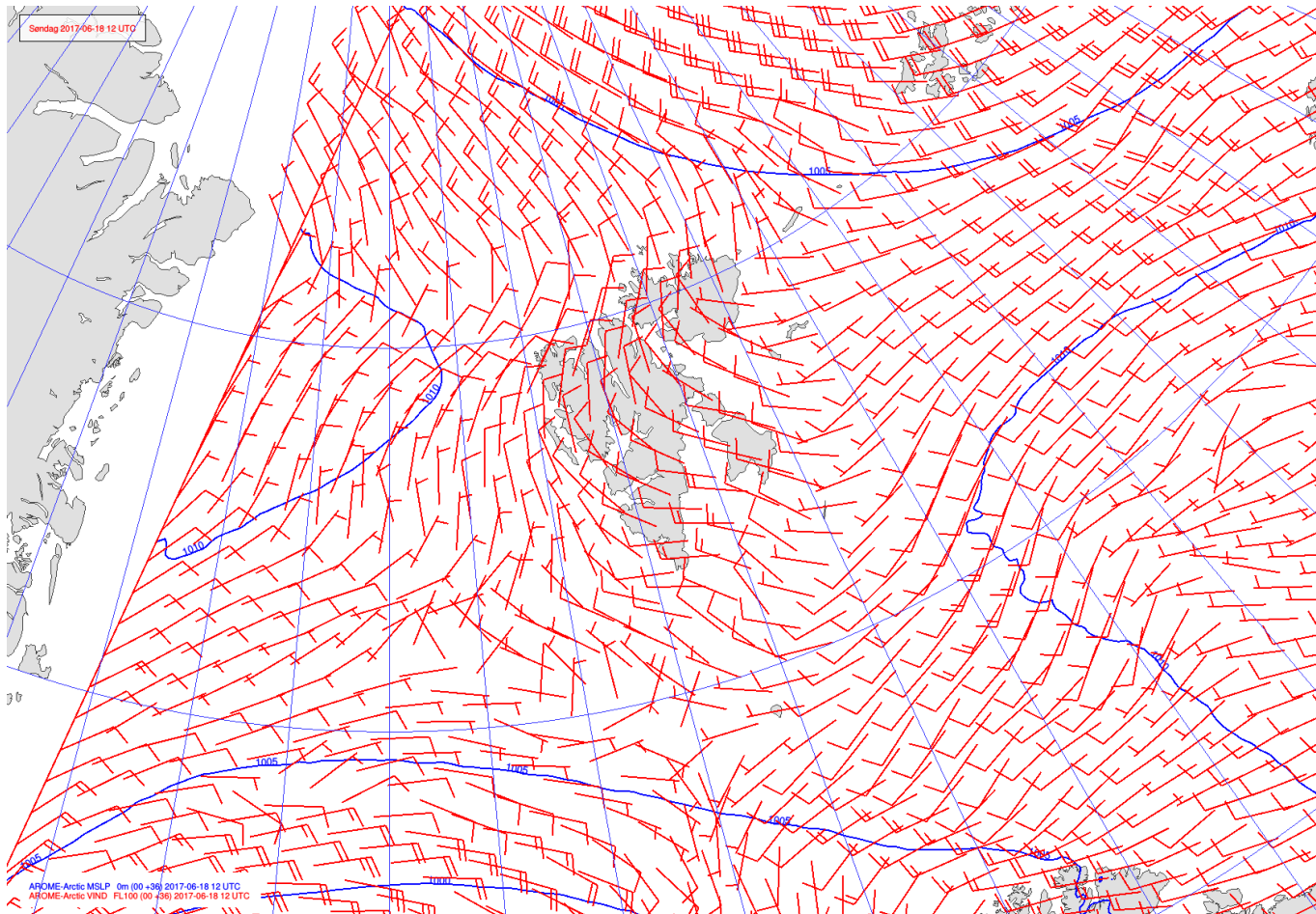
Sun Jun 18
12 UTC



AROME-
Arctic

MSLP / V_{FL100}

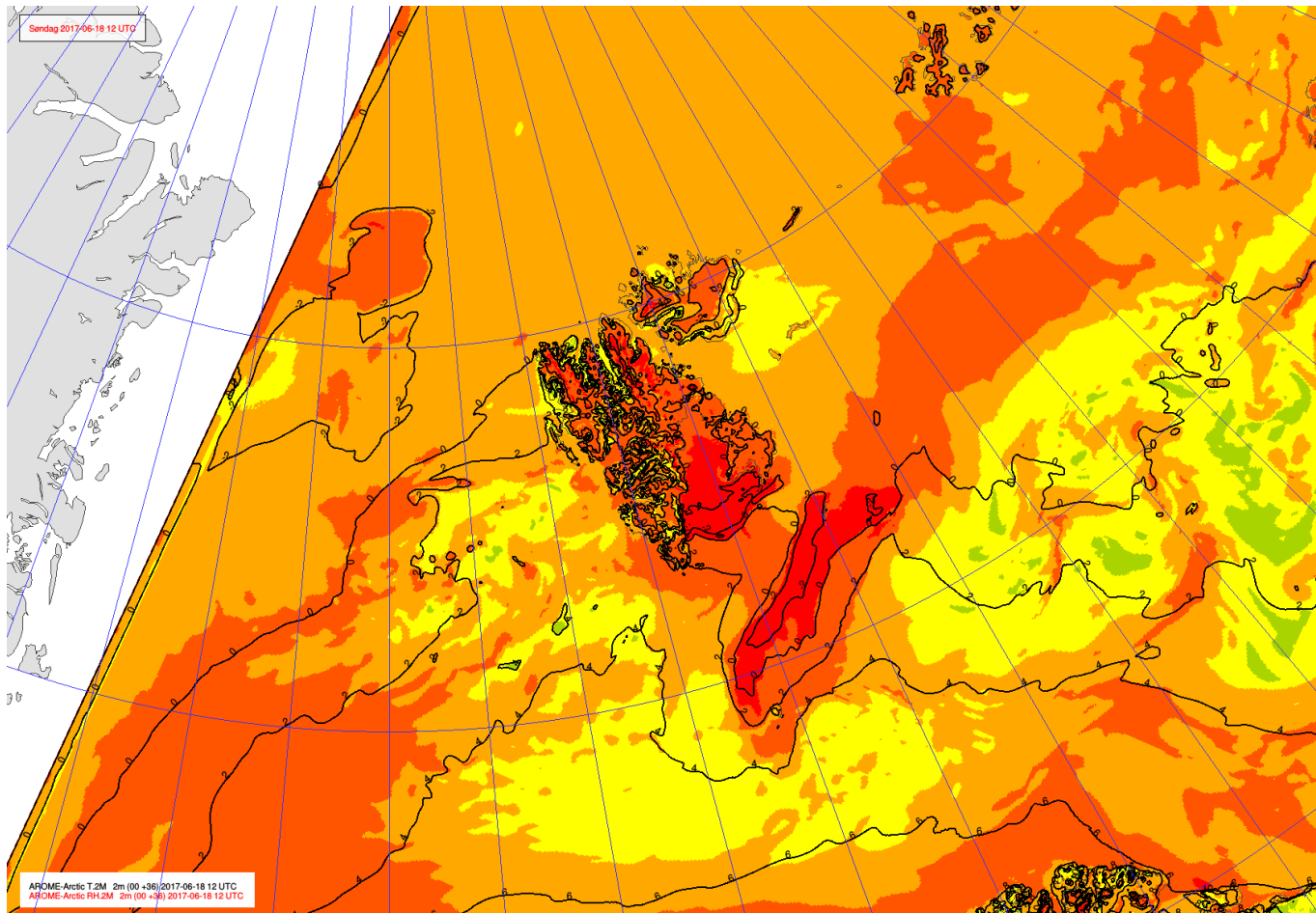
Sun Jun 18
12 UTC



AROME-
Arctic

T_{2m} / RH_{2m}

Sun Jun 18
12 UTC



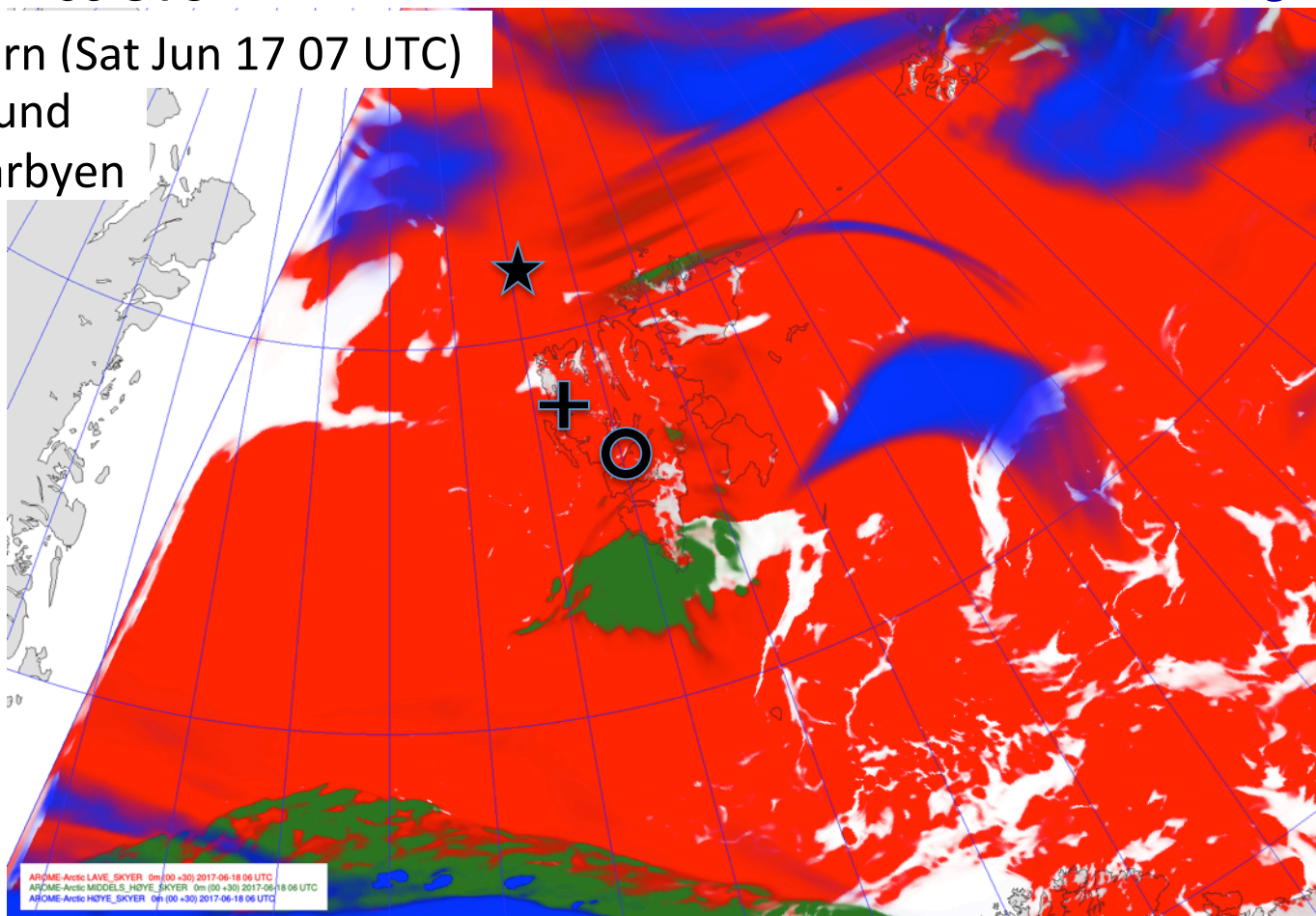
AROME-
Arctic

Cloud cover

Sun Jun 18
06 UTC

Low / Medium / High

- ★ Polarstern (Sat Jun 17 07 UTC)
- + Ny-Ålesund
- Longyearbyen



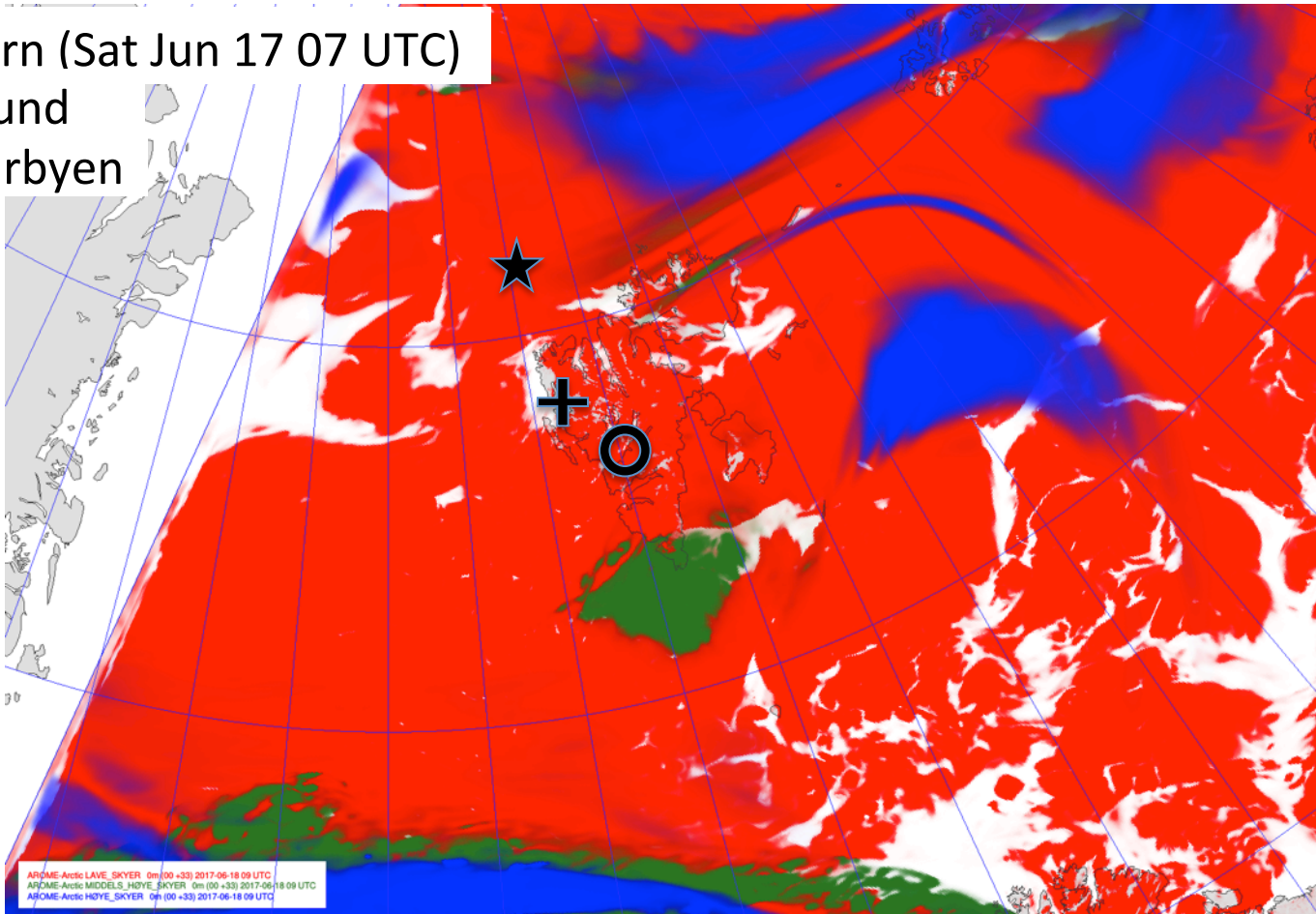
AROME-
Arctic

Cloud cover

Sun Jun 18
09 UTC

Low / Medium / High

- ★ Polarstern (Sat Jun 17 07 UTC)
- + Ny-Ålesund
- Longyearbyen



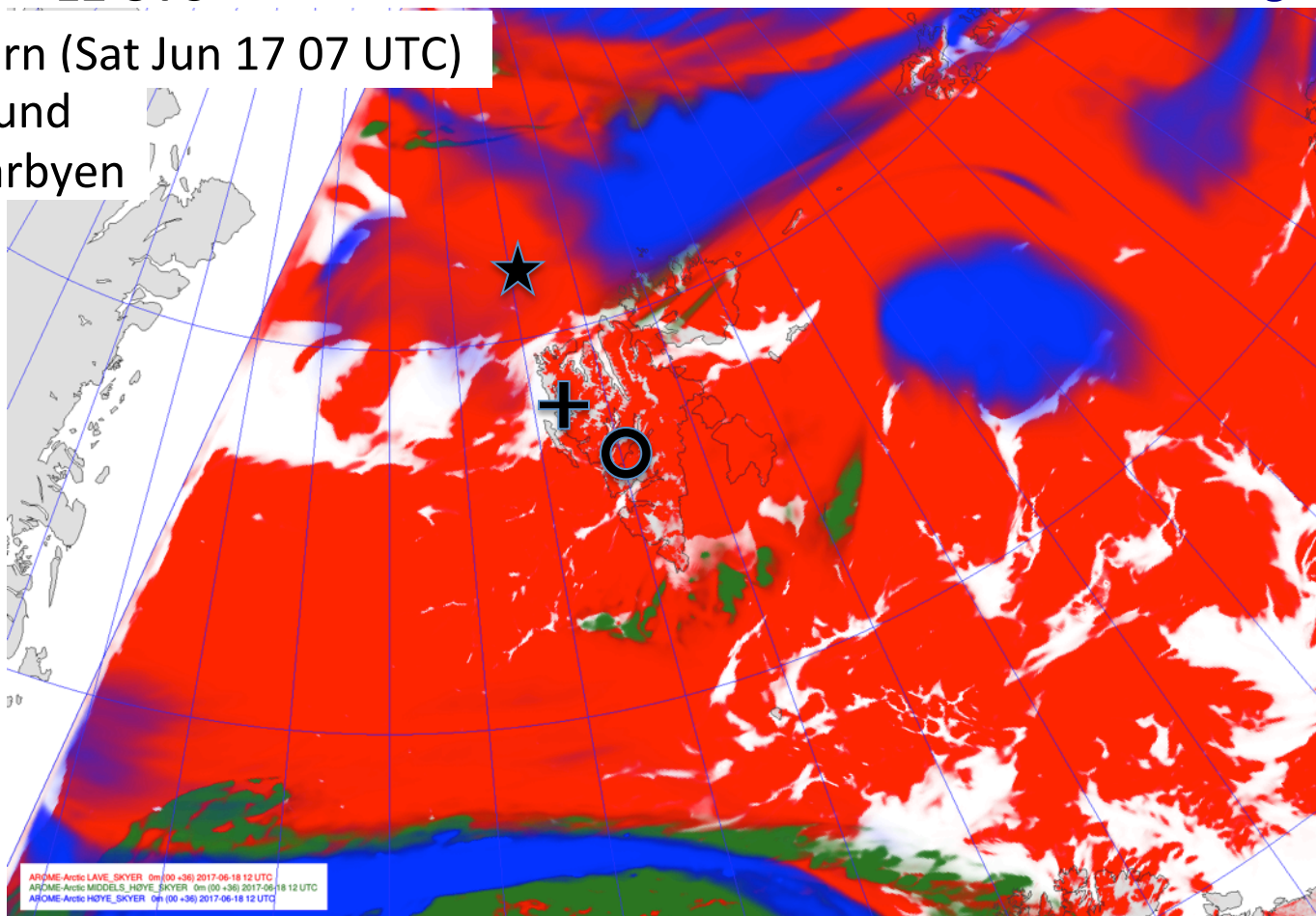
AROME-
Arctic

Cloud cover

Sun Jun 18
12 UTC

Low / Medium / High

- ★ Polarstern (Sat Jun 17 07 UTC)
- + Ny-Ålesund
- Longyearbyen



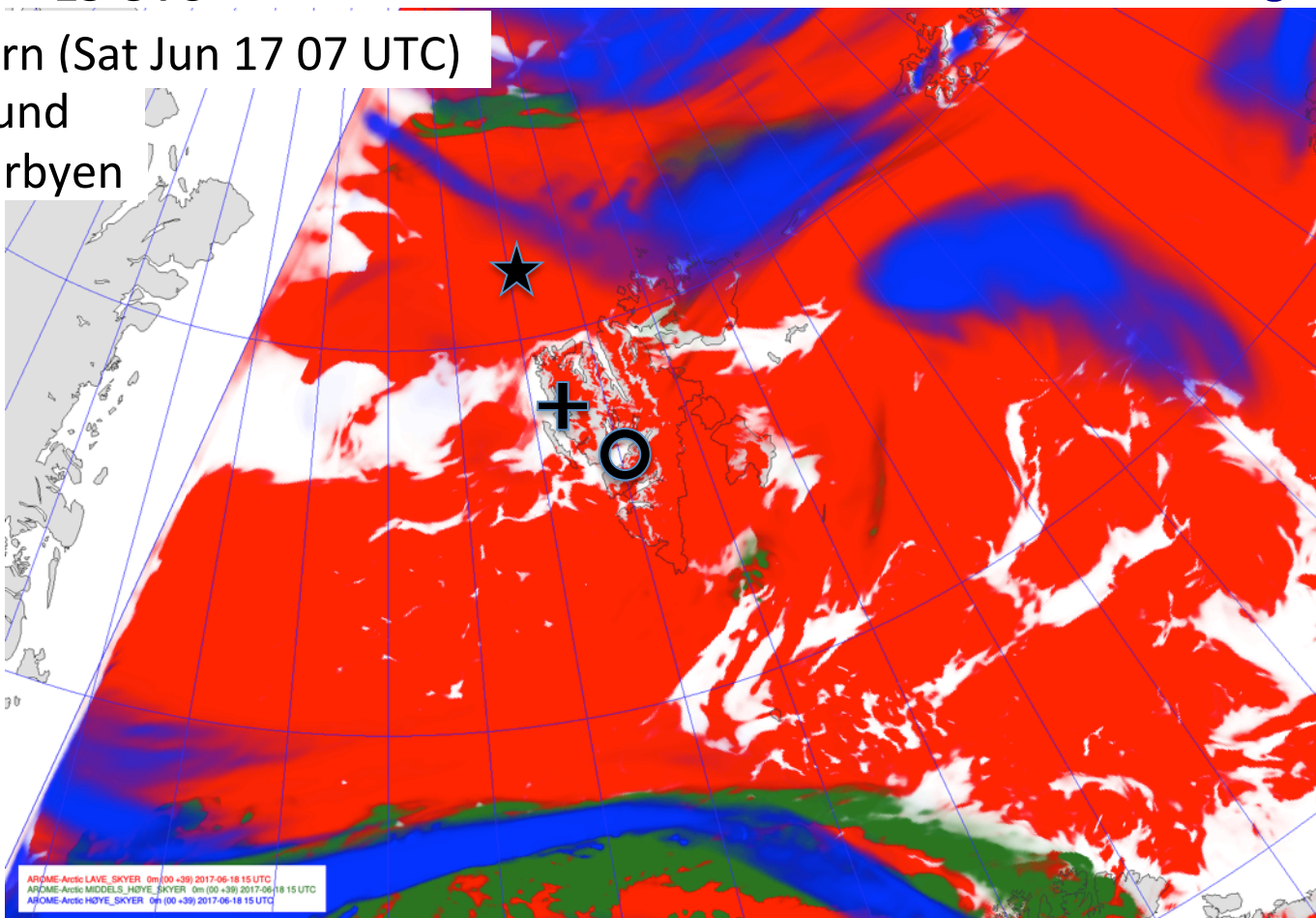
AROME-
Arctic

Cloud cover

Sun Jun 18
15 UTC

Low / Medium / High

- ★ Polarstern (Sat Jun 17 07 UTC)
- + Ny-Ålesund
- Longyearbyen



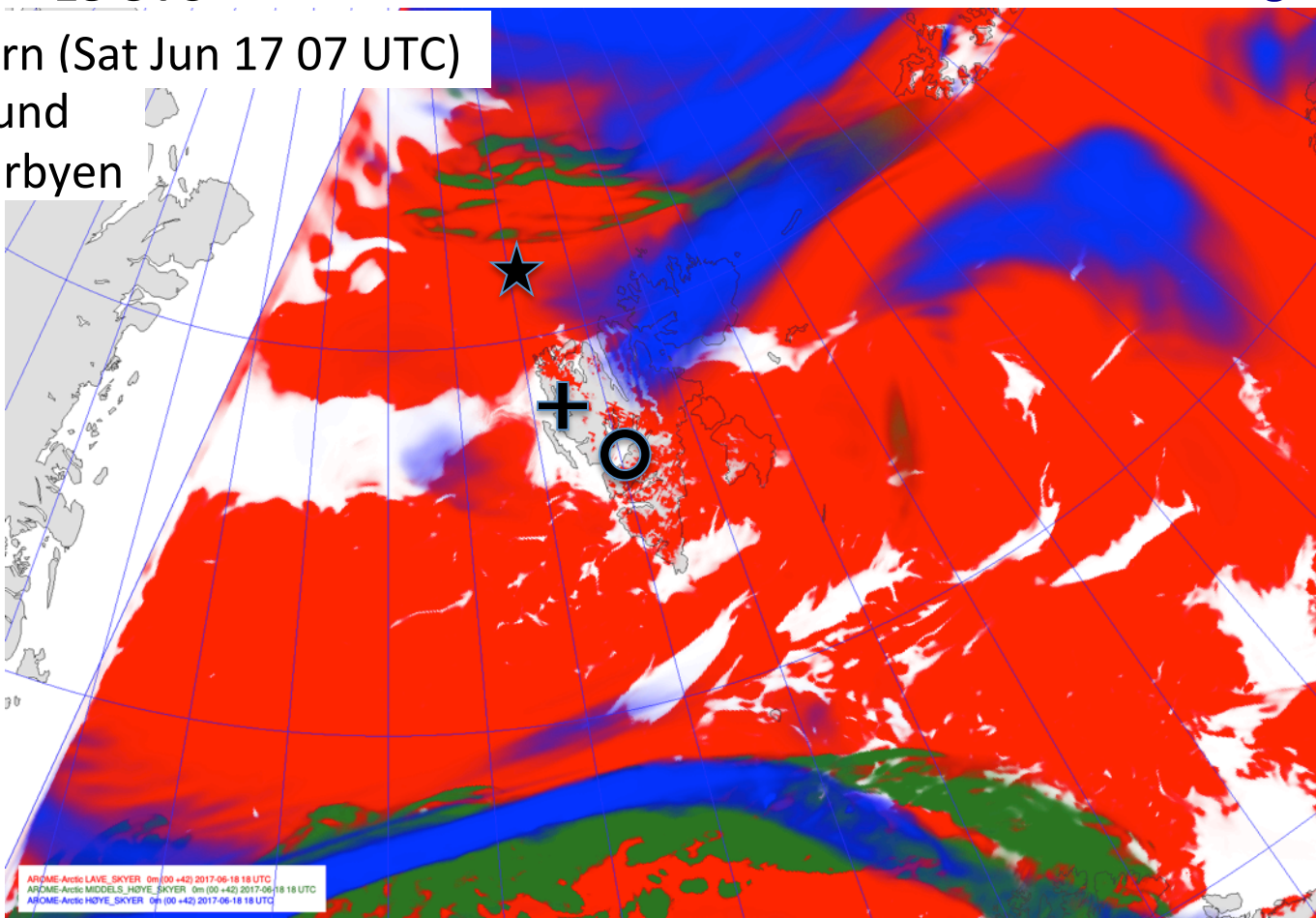
AROME-
Arctic

Cloud cover

Sun Jun 18
18 UTC

Low / Medium / High

- ★ Polarstern (Sat Jun 17 07 UTC)
- + Ny-Ålesund
- Longyearbyen



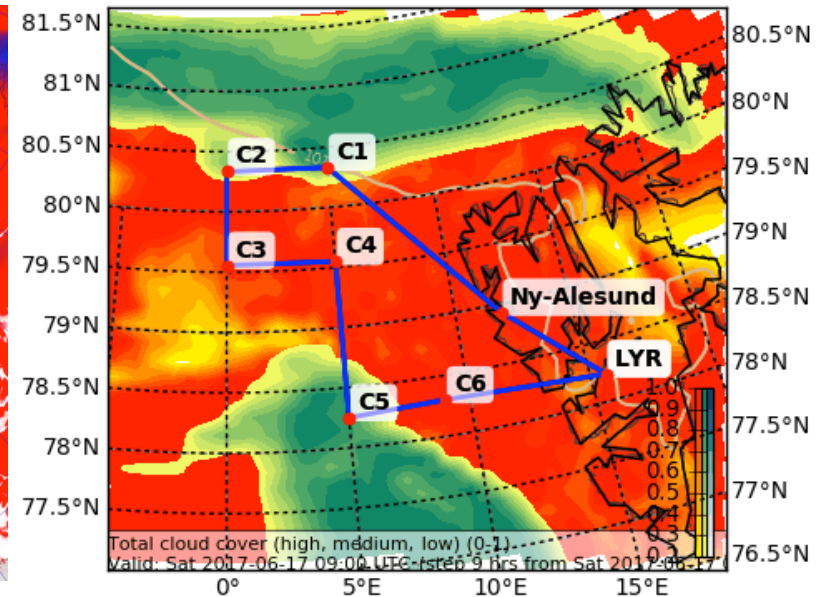
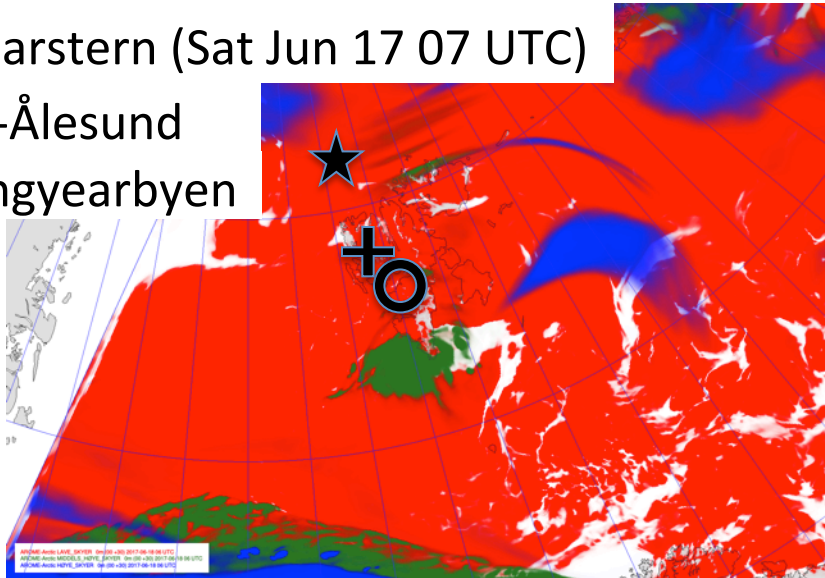
AROME-
Arctic

Sun Jun 18
06 UTC

Cloud cover

Low / Medium / High

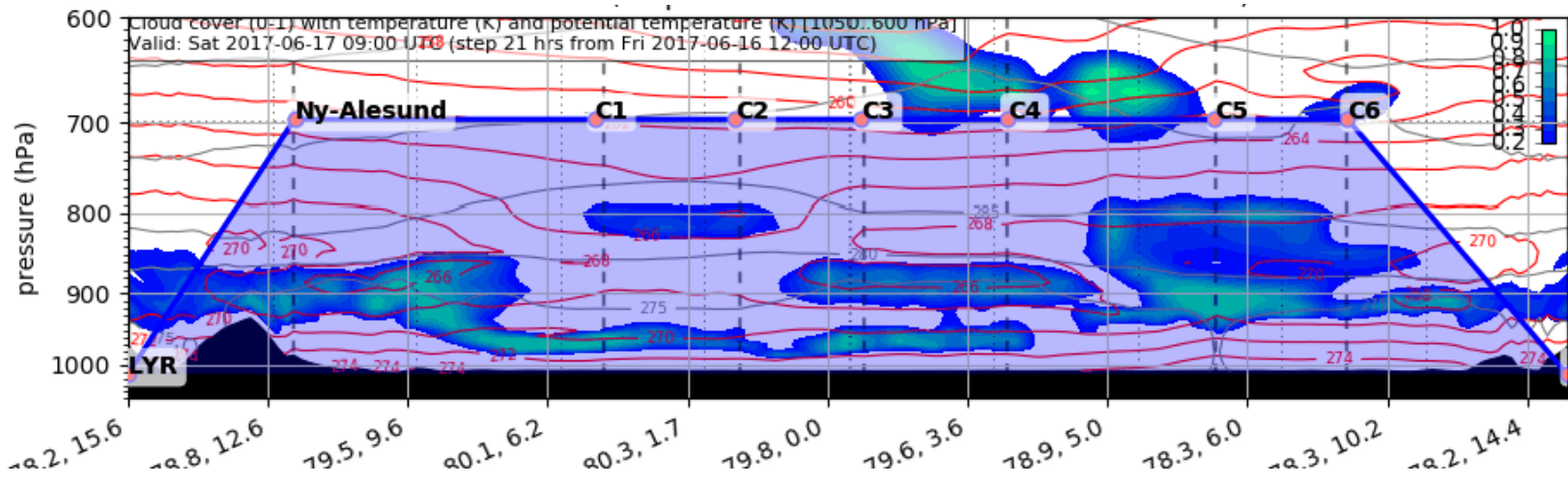
- ★ Polarstern (Sat Jun 17 07 UTC)
- ✚ Ny-Ålesund
- Longyearbyen



AROME-Arctic

Cloud cover / T (K) / θ (K)

ECMWF

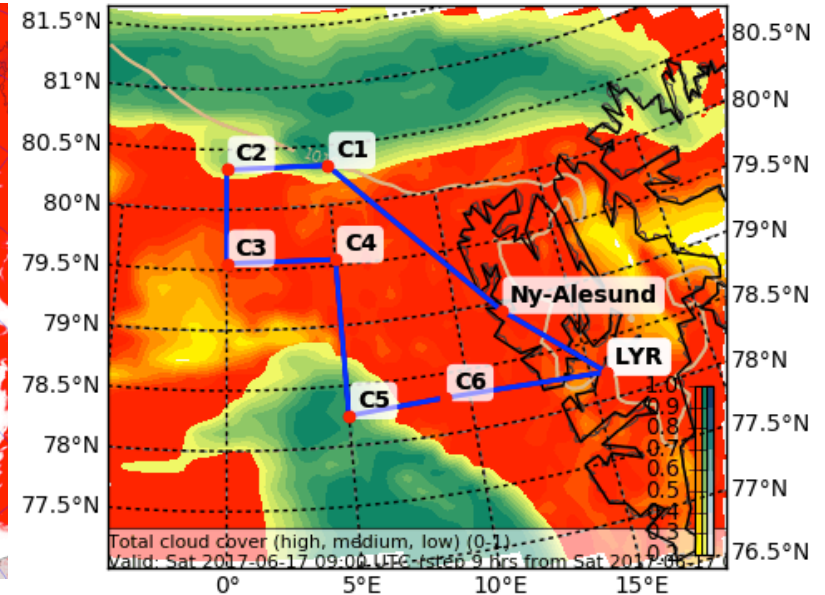
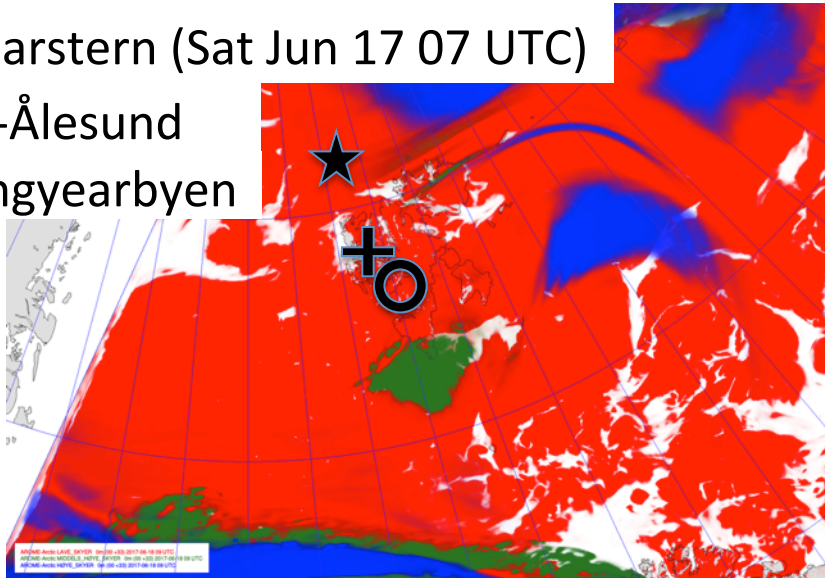


Sun Jun 18
09 UTC

Cloud cover

Low / Medium / High

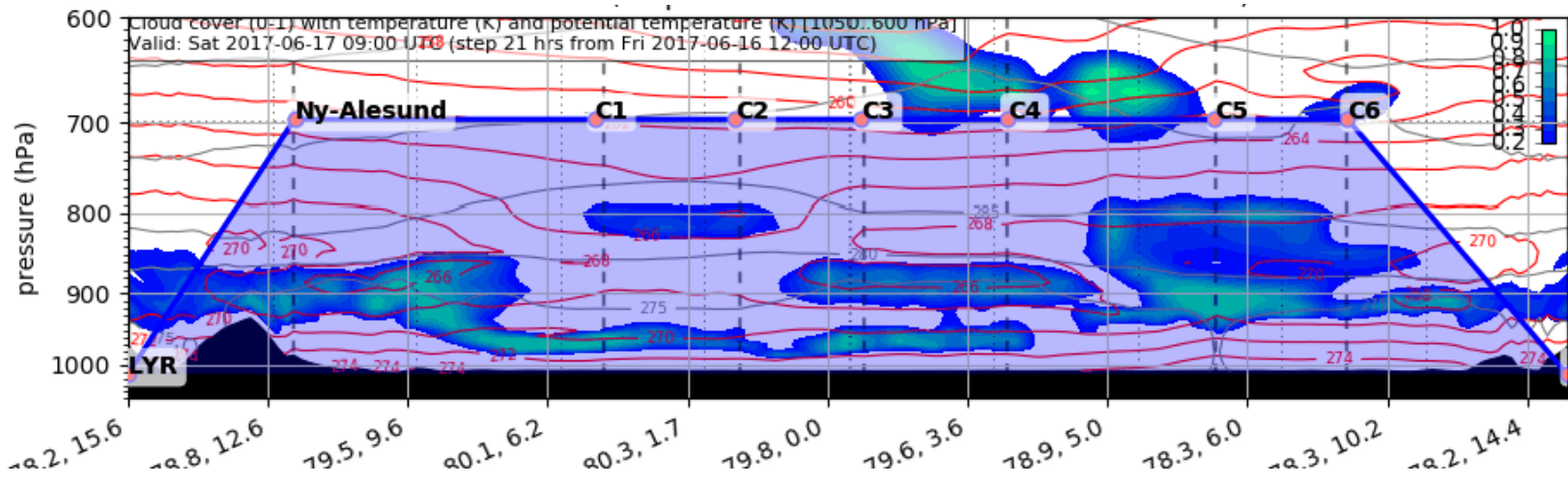
- ★ Polarstern (Sat Jun 17 07 UTC)
- ✚ Ny-Ålesund
- Longyearbyen



AROME-Arctic

Cloud cover / T (K) / θ (K)

ECMWF

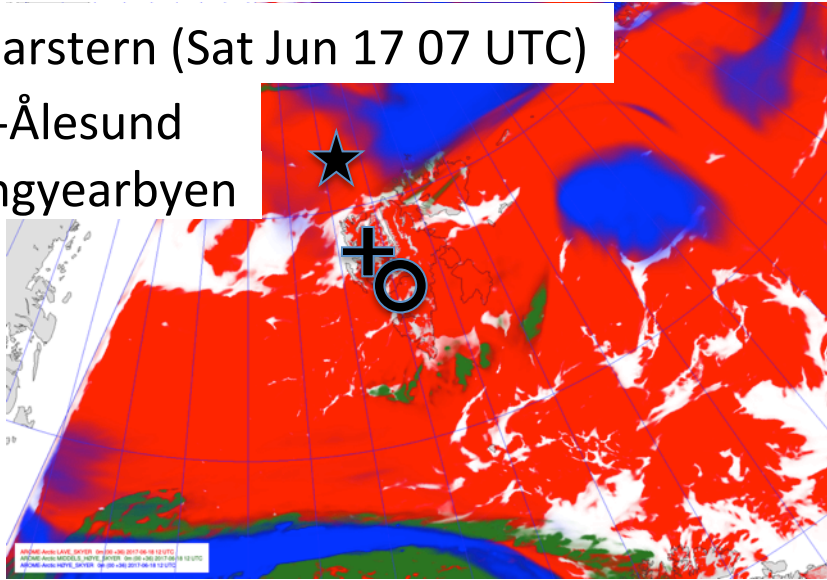


Sun Jun 18
12 UTC

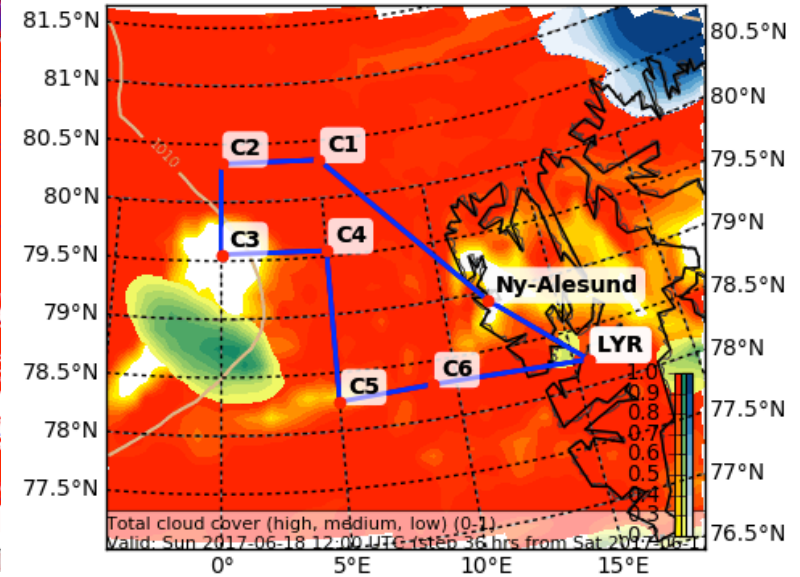
Cloud cover

Low / Medium / High

- ★ Polarstern (Sat Jun 17 07 UTC)
- ✚ Ny-Ålesund
- Longyearbyen

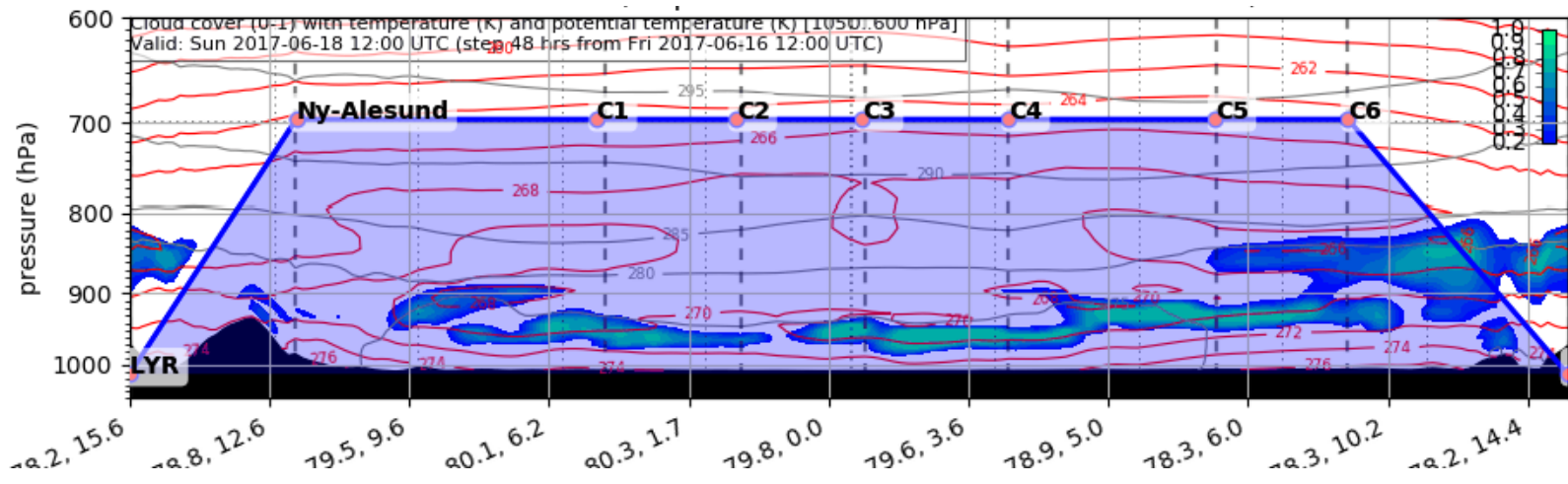


AROME-Arctic



ECMWF

Cloud cover / T (K) / θ (K)

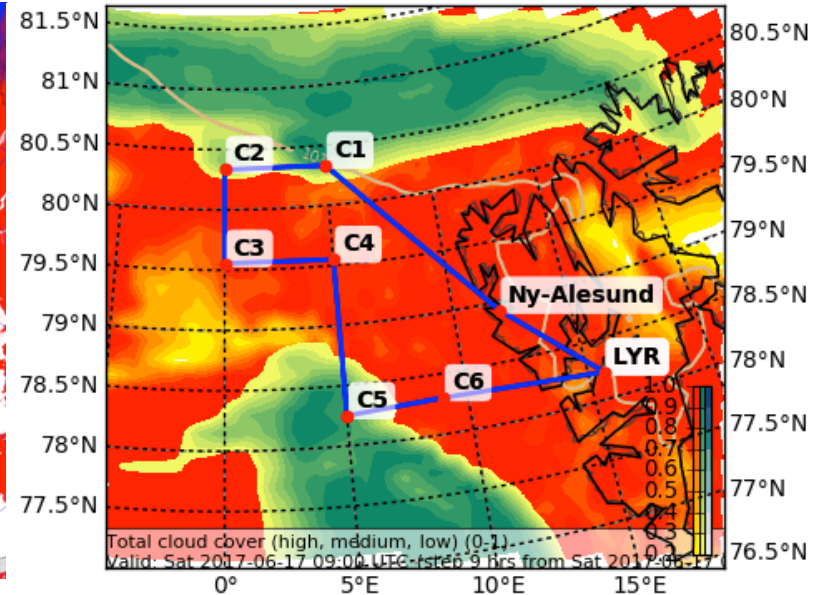
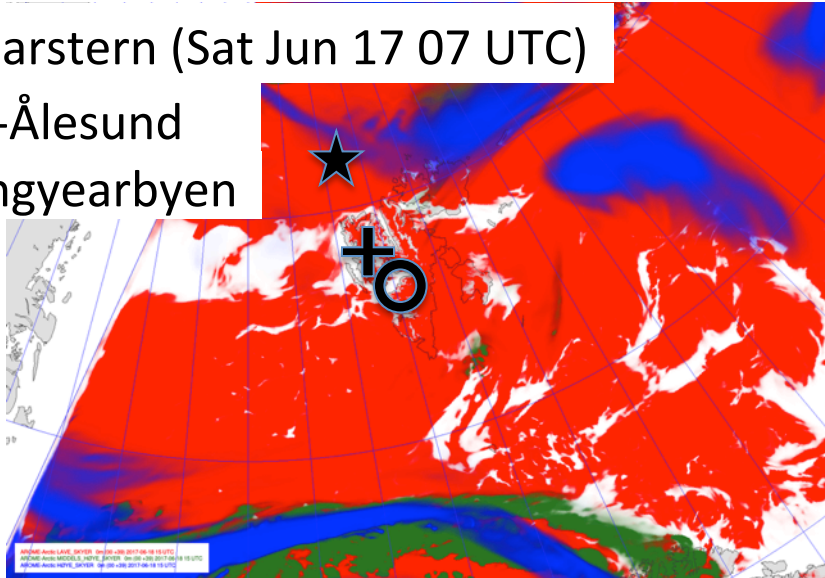


Sun Jun 18
15 UTC

Cloud cover

Low / Medium / High

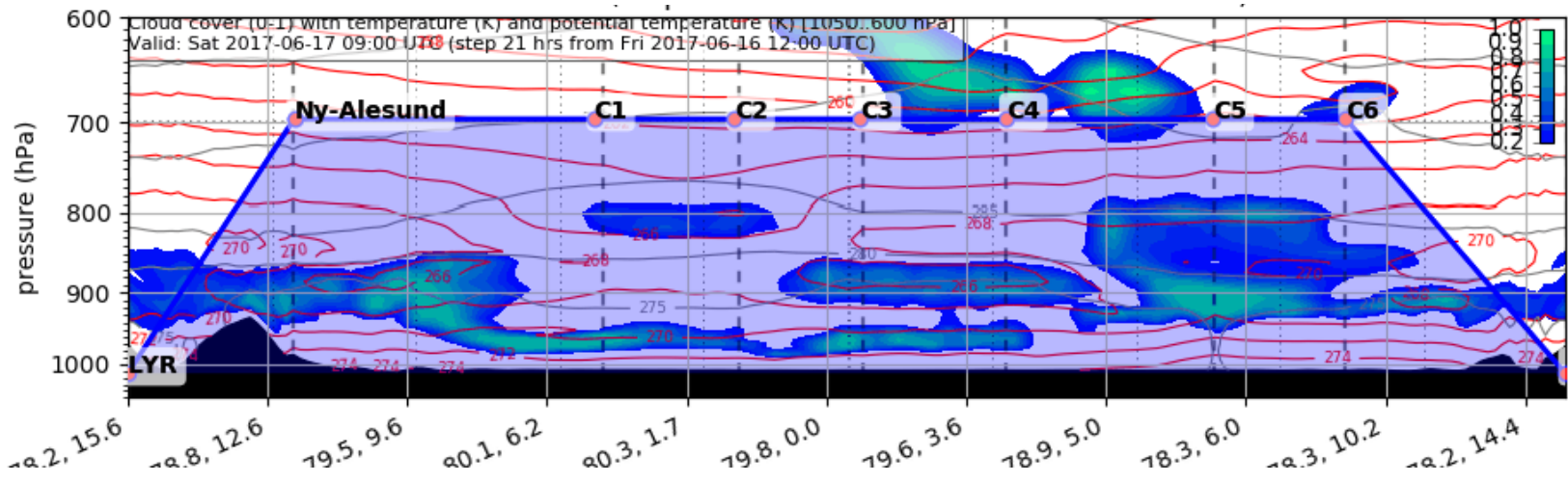
- ★ Polarstern (Sat Jun 17 07 UTC)
- ✚ Ny-Ålesund
- Longyearbyen



AROME-Arctic

Cloud cover / T (K) / θ (K)

ECMWF

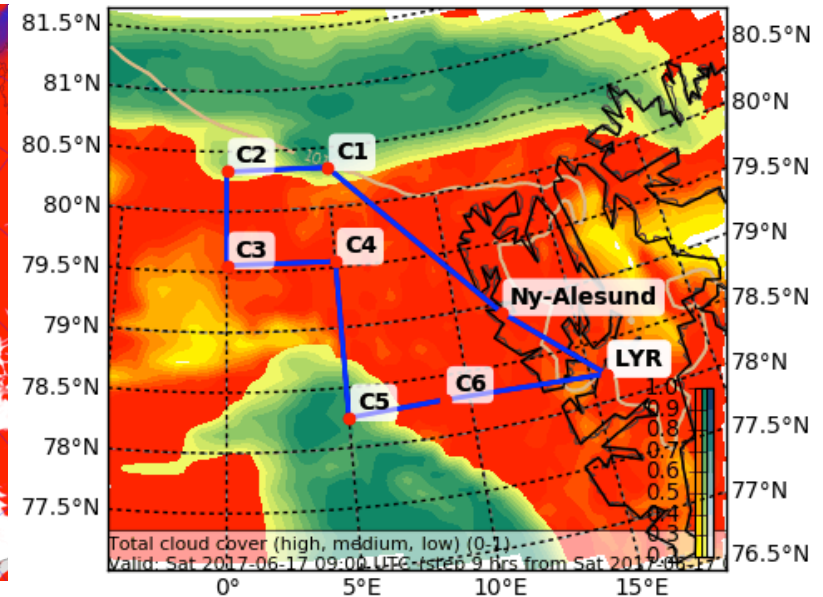
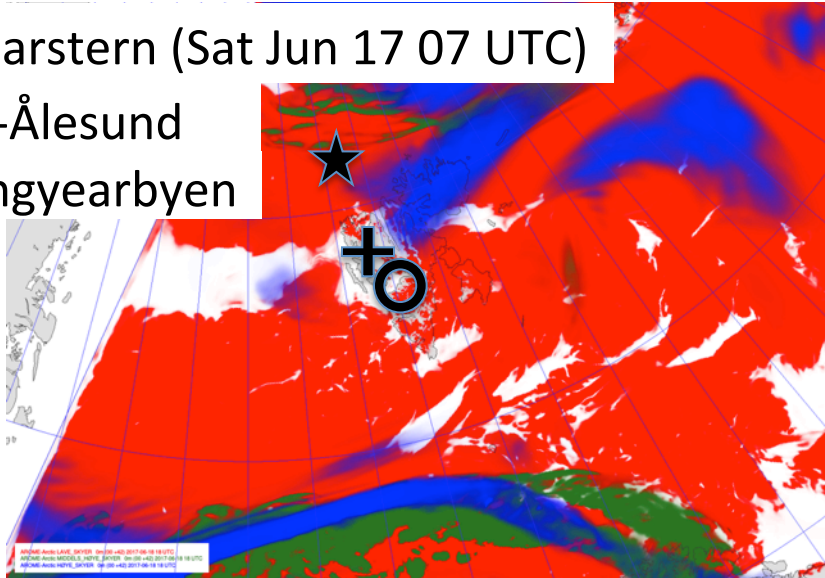


Sun Jun 18
18 UTC

Cloud cover

Low / Medium / High

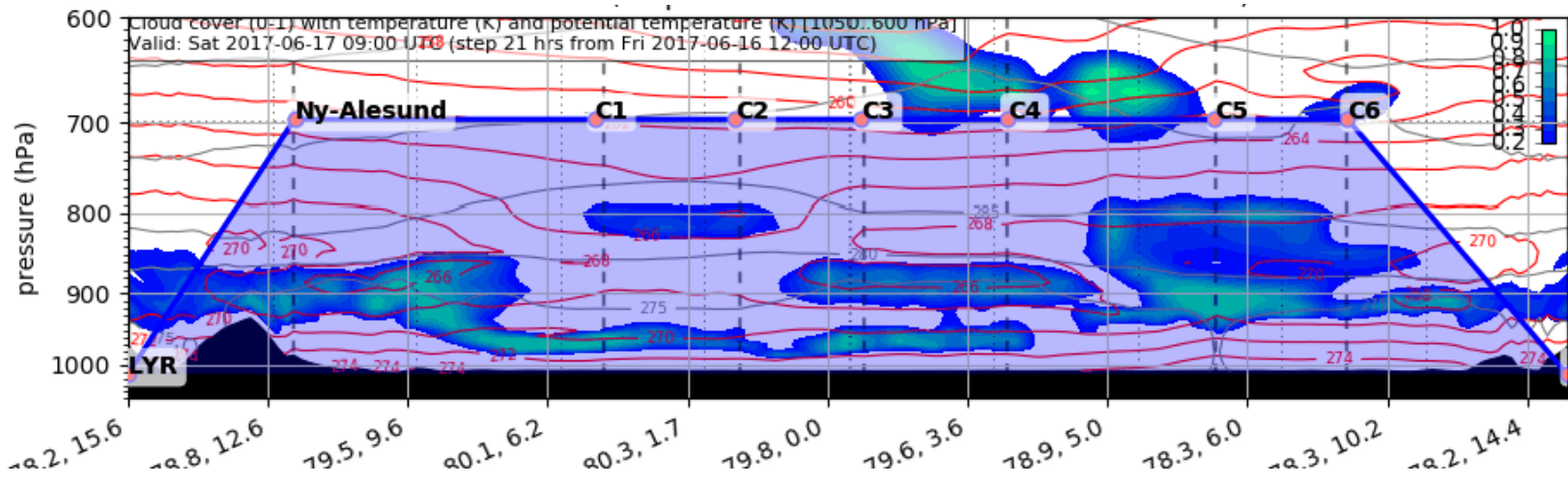
- ★ Polarstern (Sat Jun 17 07 UTC)
- ✚ Ny-Ålesund
- Longyearbyen



AROME-Arctic

Cloud cover / T (K) / θ (K)

ECMWF



Fog

Sun Jun 18
12 UTC

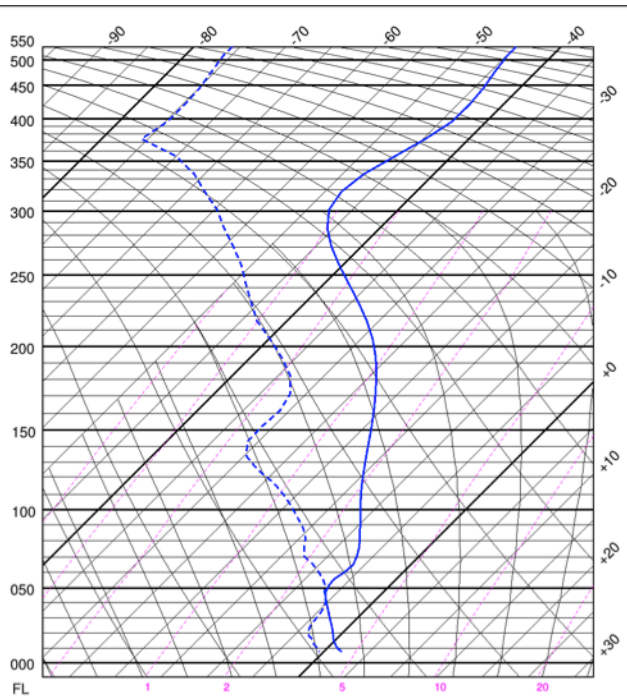


AROME-
Arctic

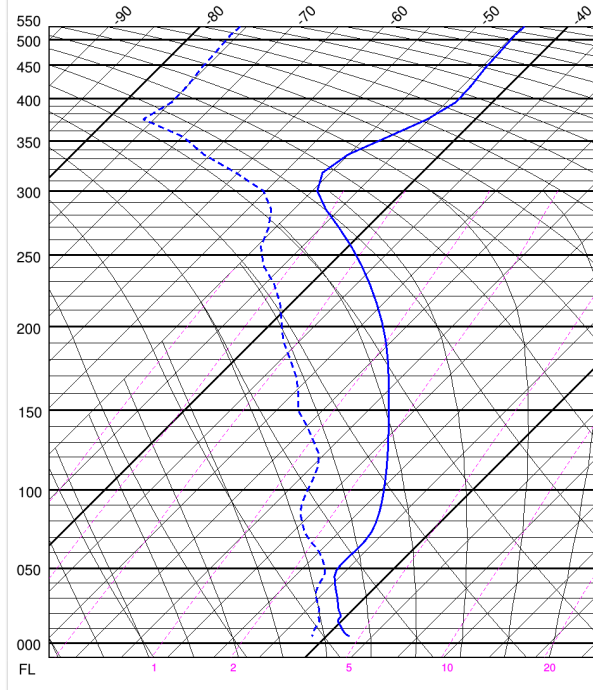
Vertical profile

Sun Jun 18
12 UTC

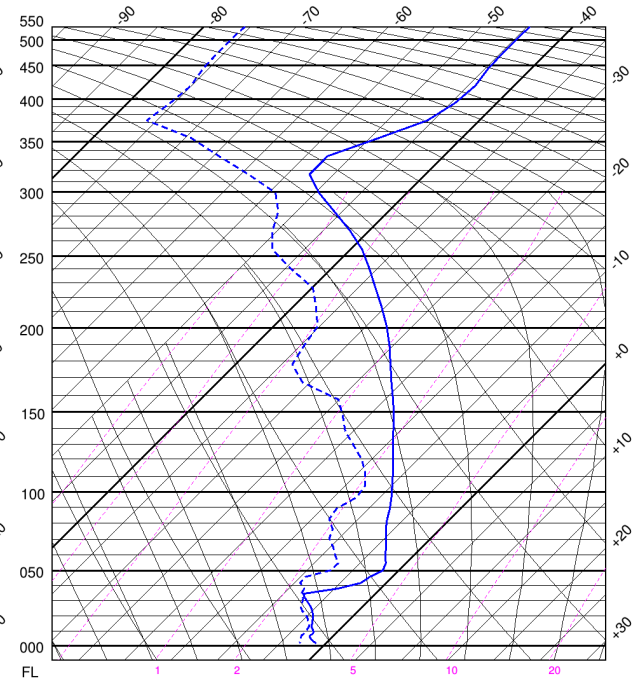
Longyearbyen



Ny-Ålesund



≈Polarstern (80°N, 10°E)



AROME-Arctic

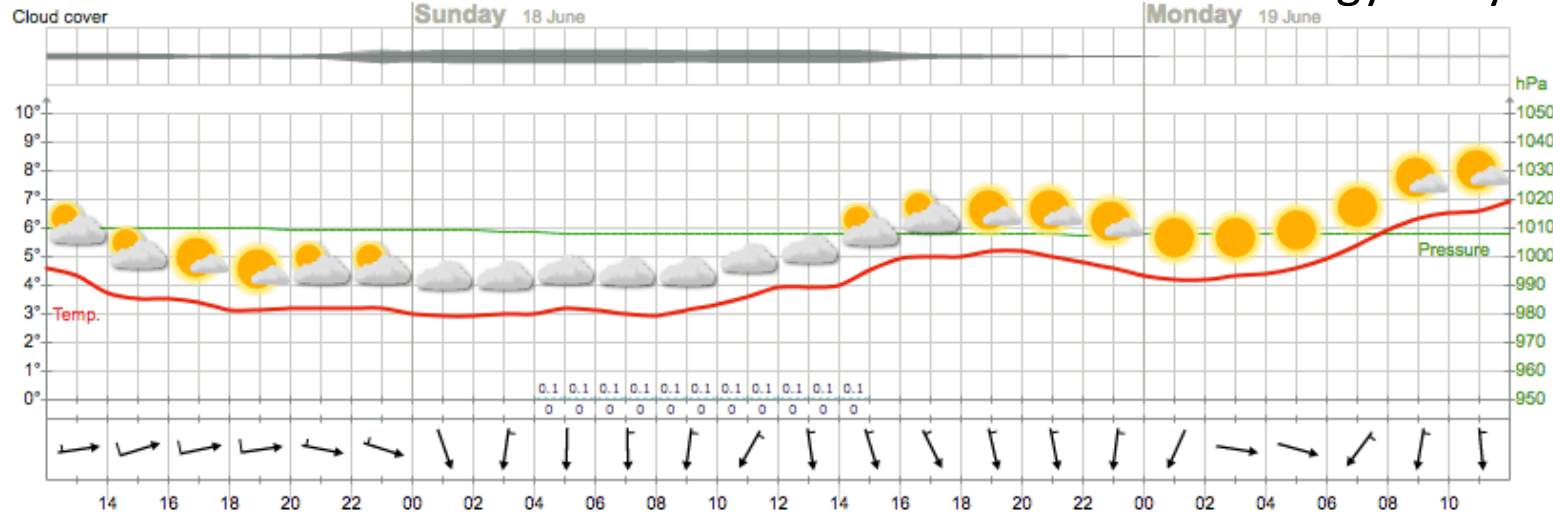
Outlook

Mon 19 – Wed 21 June 2017

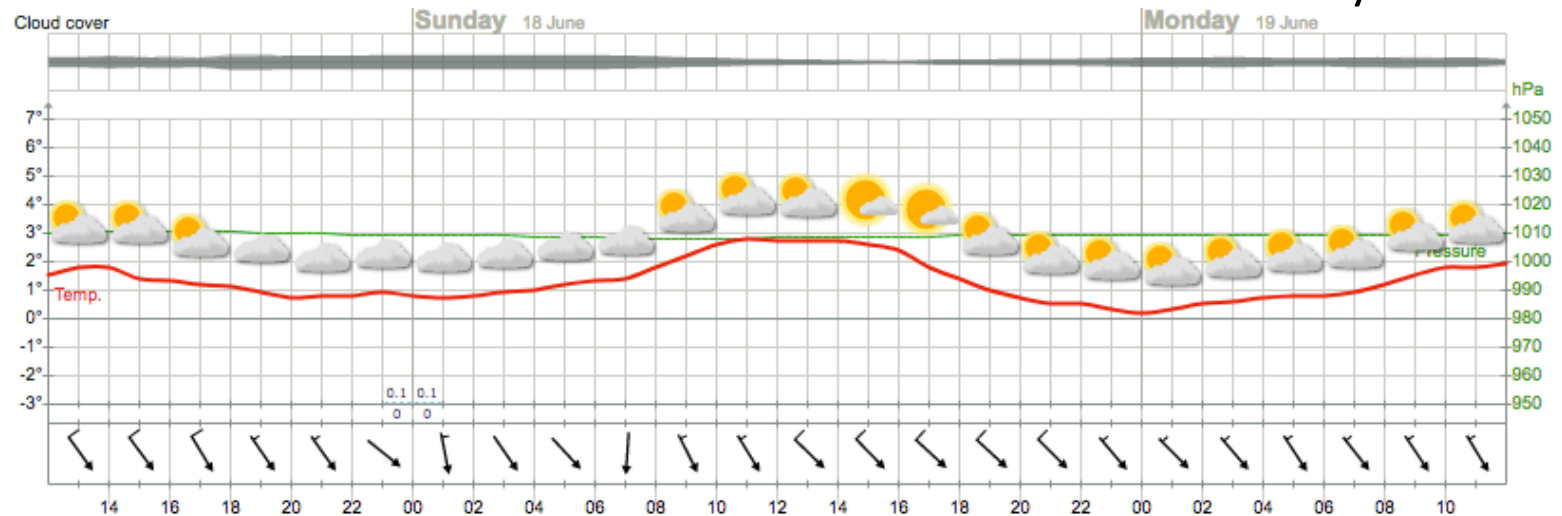
Meteogram

Sat Jun 17 – Mon 19

Longyearbyen

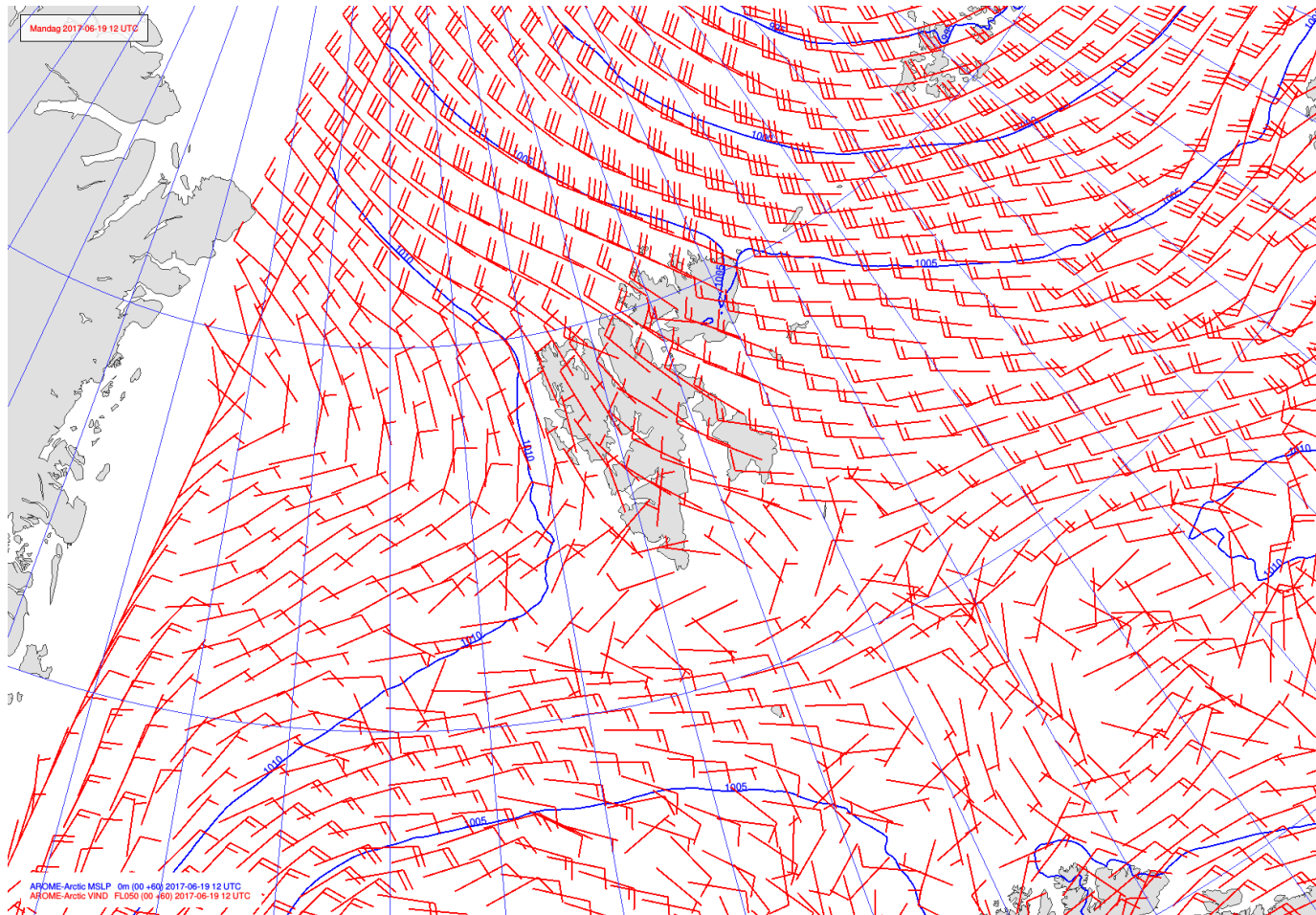


Ny-Ålesund



MSLP / V_{FL050}

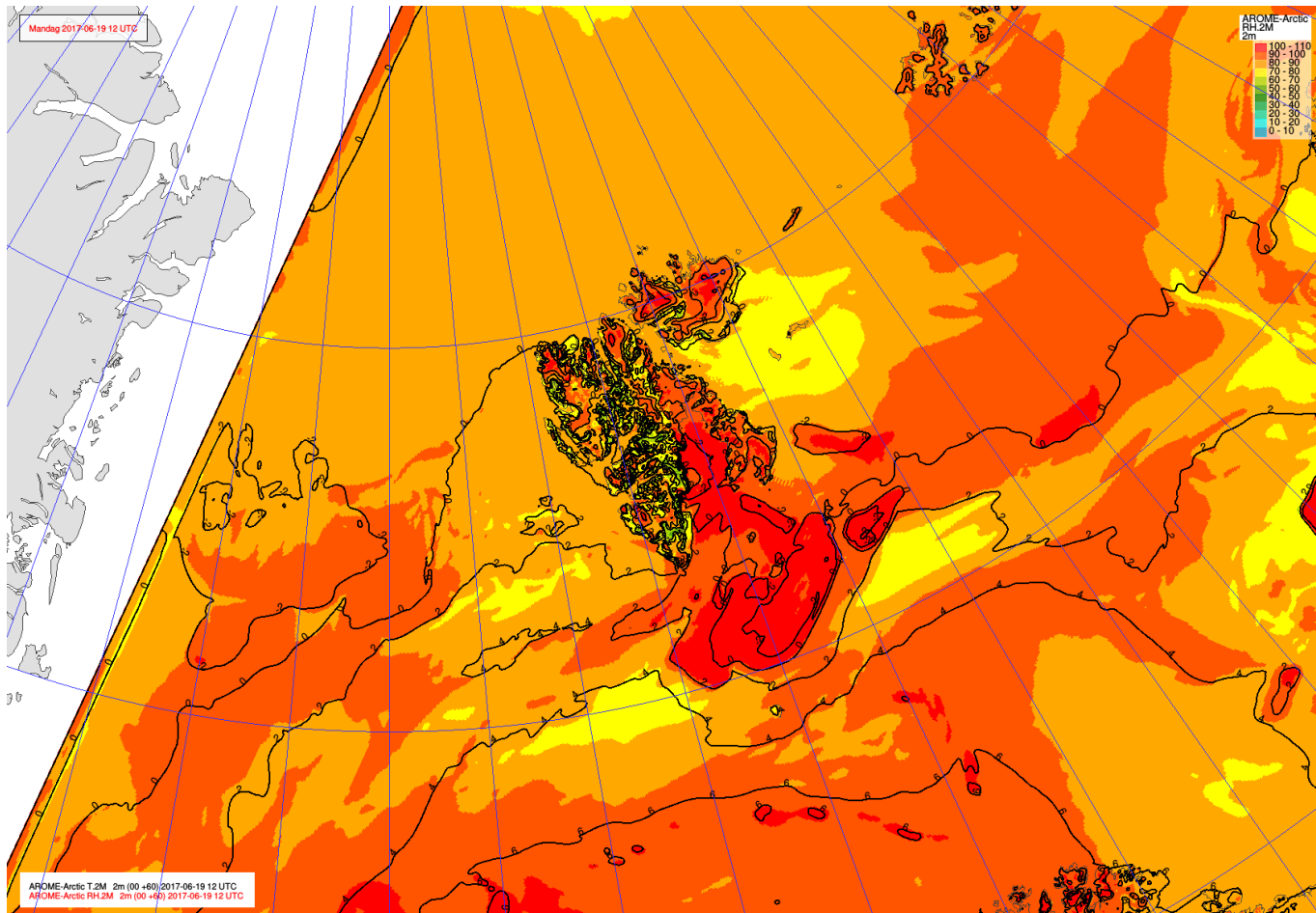
**Mon Jun 19
12 UTC**



AROME-
Arctic

T_{2m} / RH_{2m}

Mon Jun 19
12 UTC

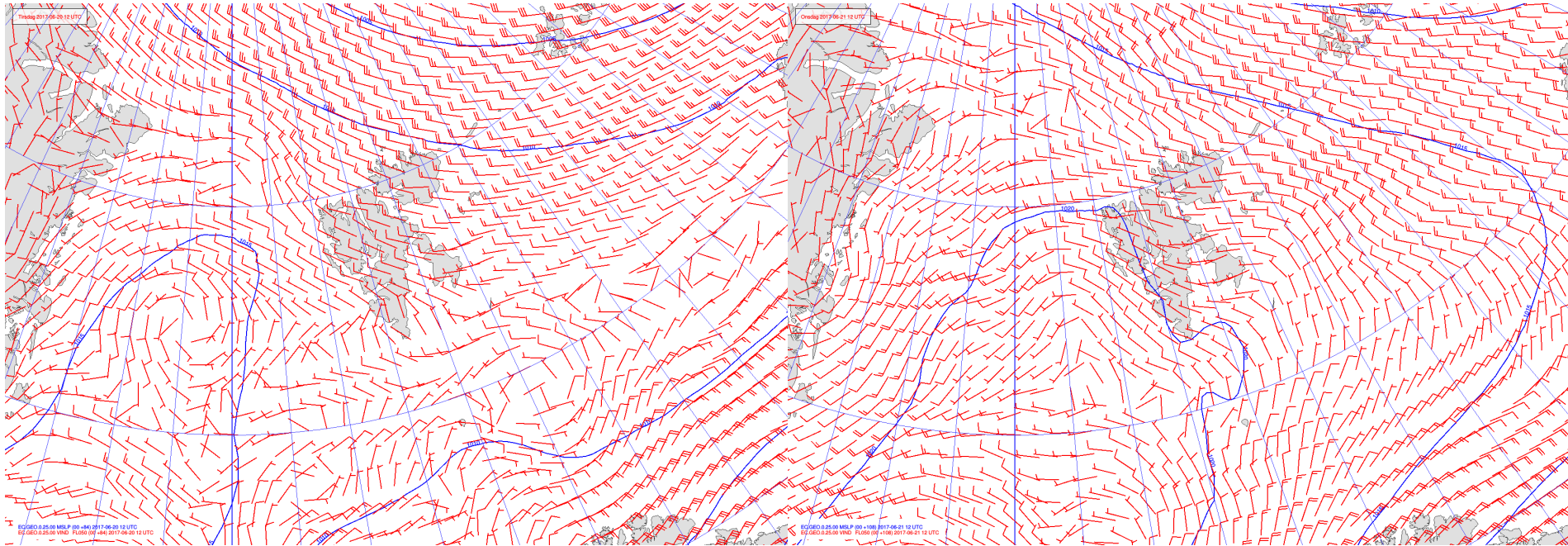


AROME-
Arctic

MSLP / V_{FL050}

**Tue Jun 20
12 UTC**

**Wed Jun 21
12 UTC**



ECMWF