

Weather briefing ACLOUD

From Tue 13 June 2017
for Wed 14 June 2017
and next three days

Summary

Svalbard lies between a high in the Greenland Sea and a low in the Kara Sea. This results in cold and dry air advection east of the archipelago and warm and moist air advection west of it. Weak surface winds in Longyearbyen, moving from W to NE. Higher up, 5-10 knots NW-NE wind.

Low clouds moving S-SW and breaking up over W Spitsbergen over tomorrow, replaced by higher level clouds. Chance of fog decreasing.

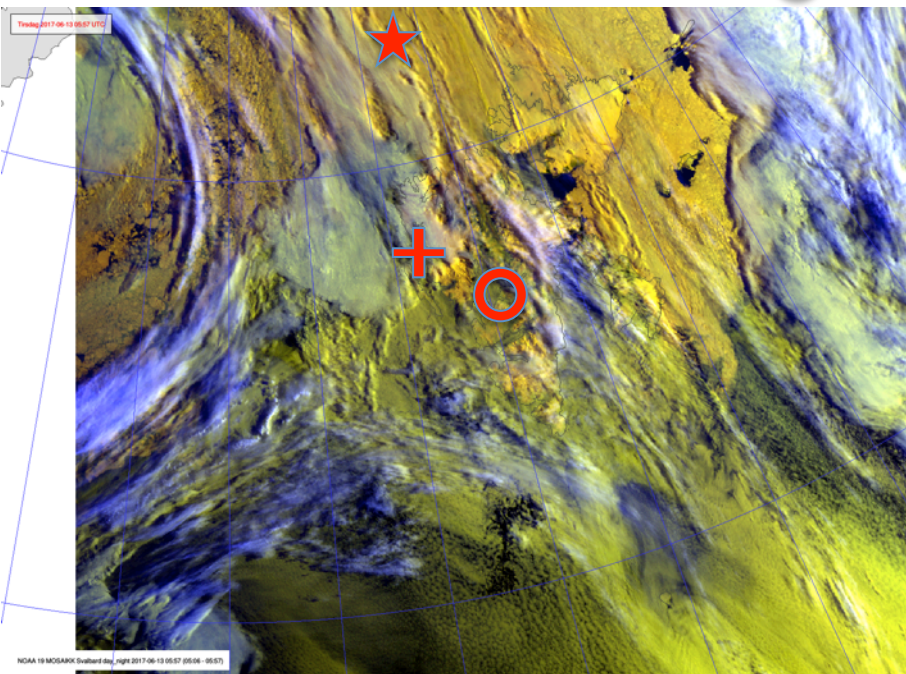
Observations

Tue 13 June 2017

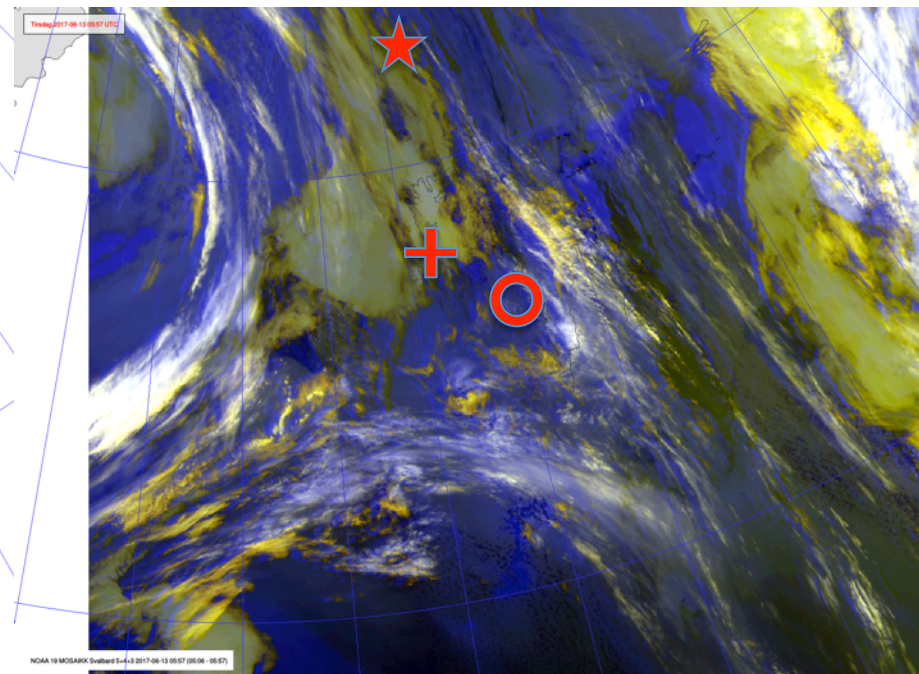
Satellite image

Jun 13
05:57 UTC

- ★ Polarstern
- + Ny-Ålesund
- Longyearbyen



VIS + IR



NOAA-19

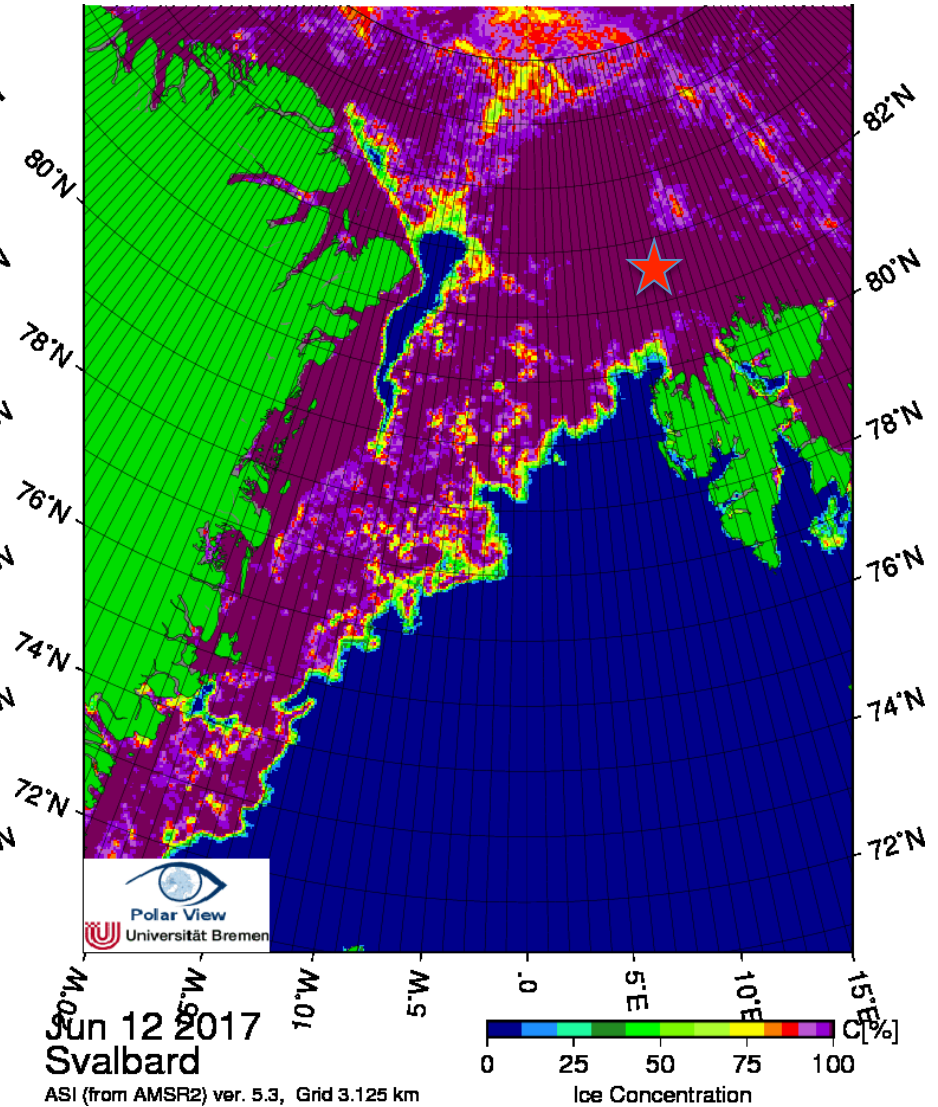
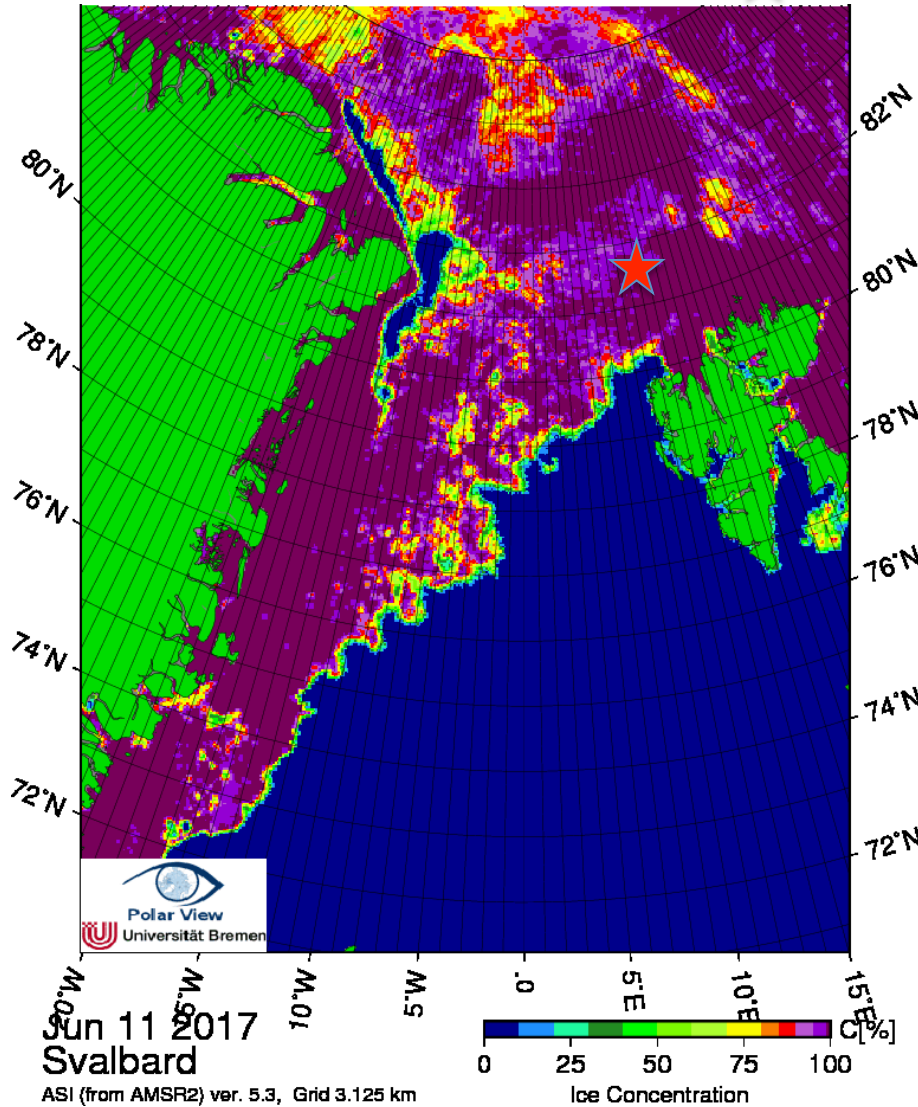
IR 5+4+3

Sea ice image

Jun 11

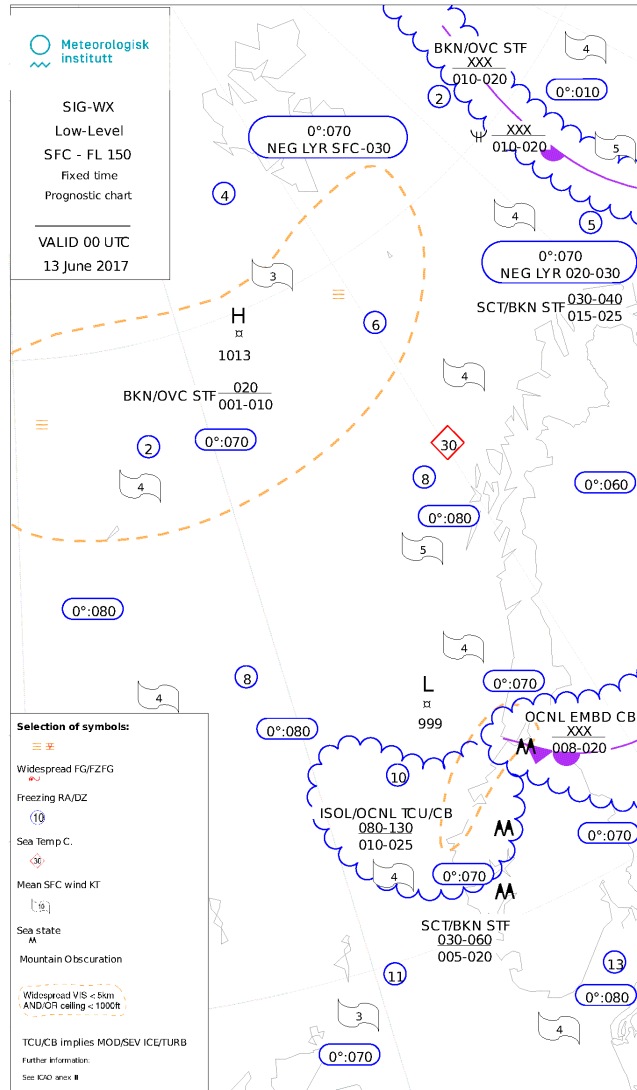
★ Polarstern

Jun 12



Significant weather chart

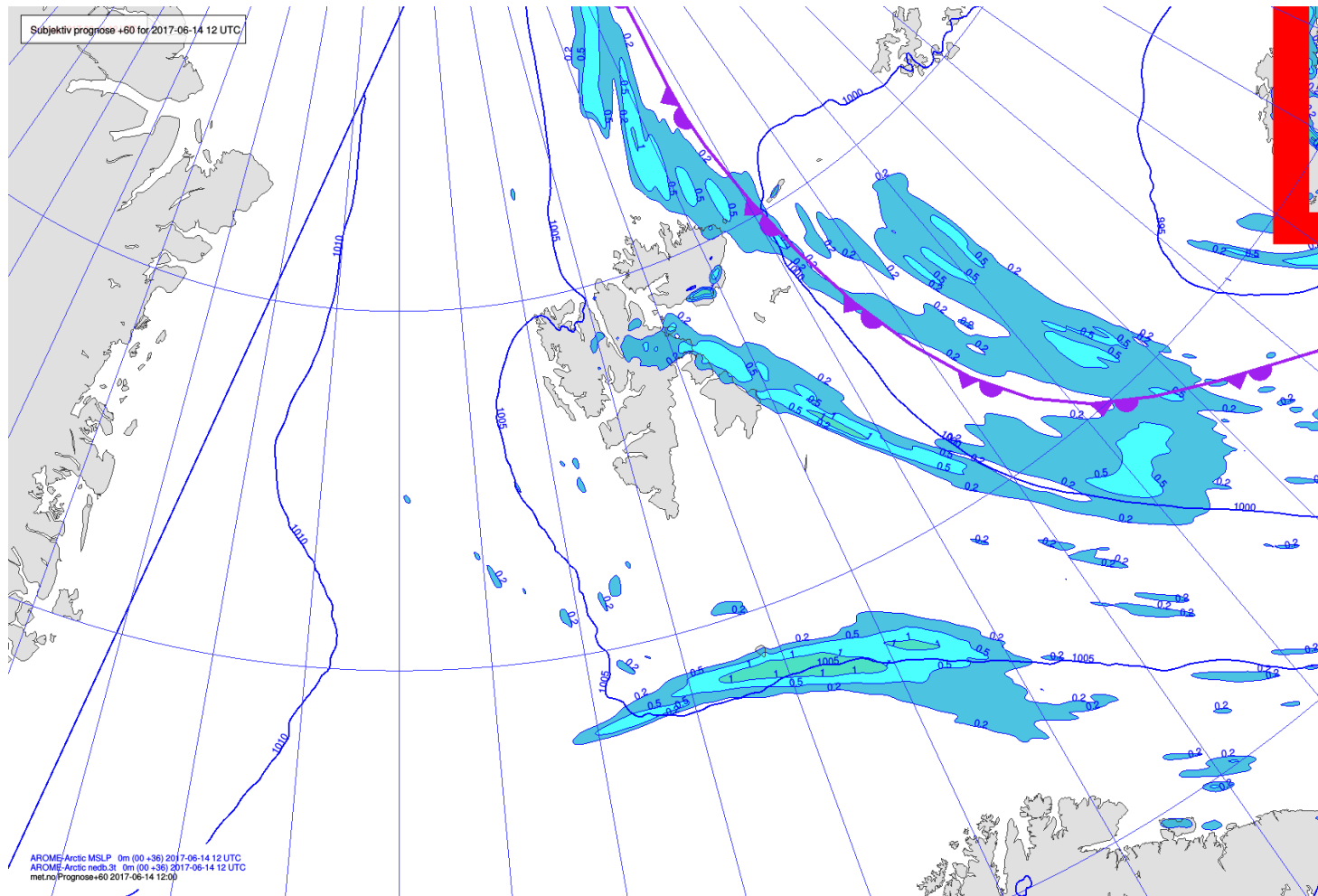
**Jun 13
00 UTC**



Forecast
Wed 14 June 2017

MSLP / Fronts / Precipitation

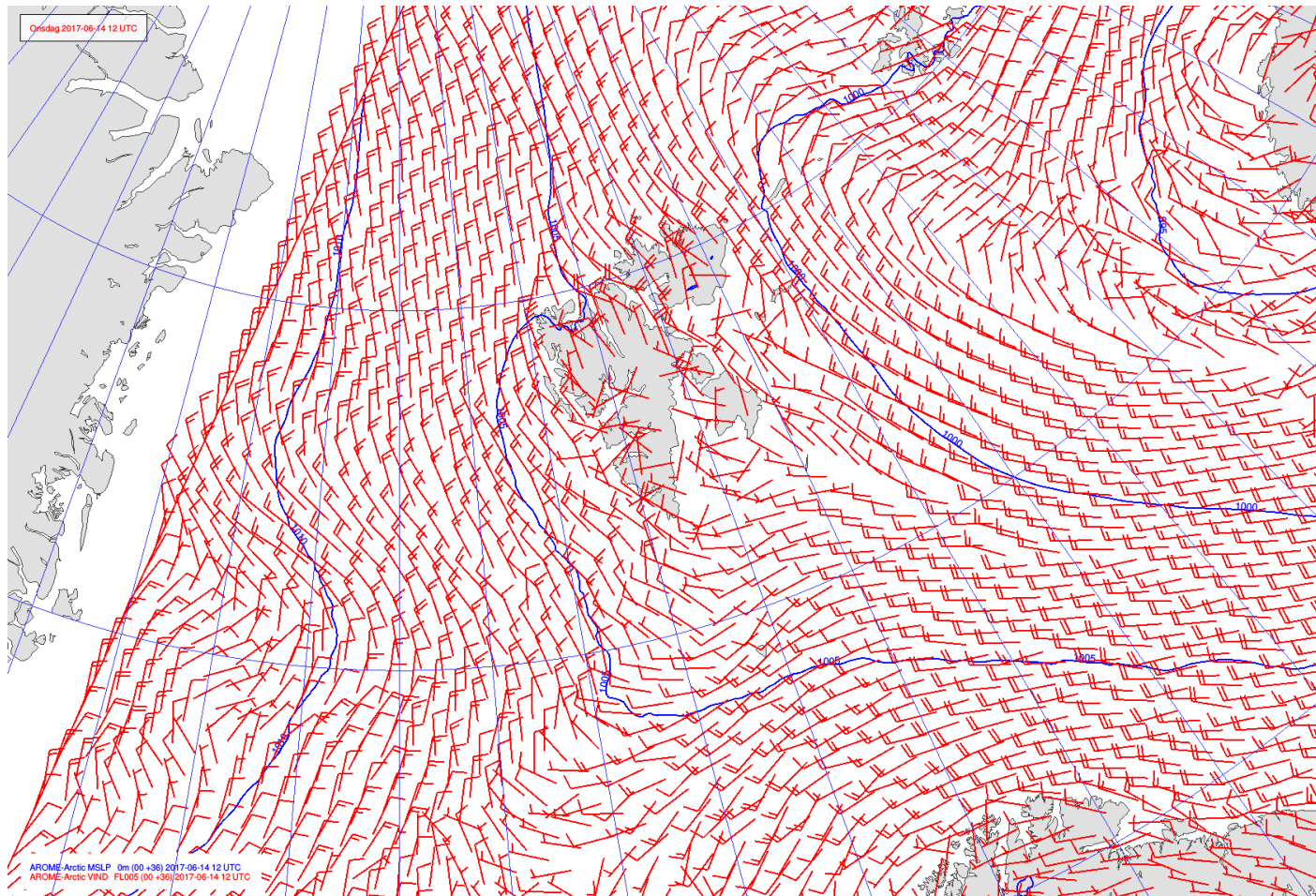
Jun 14
12 UTC



AROME-
Arctic

MSLP / V_{FL005}

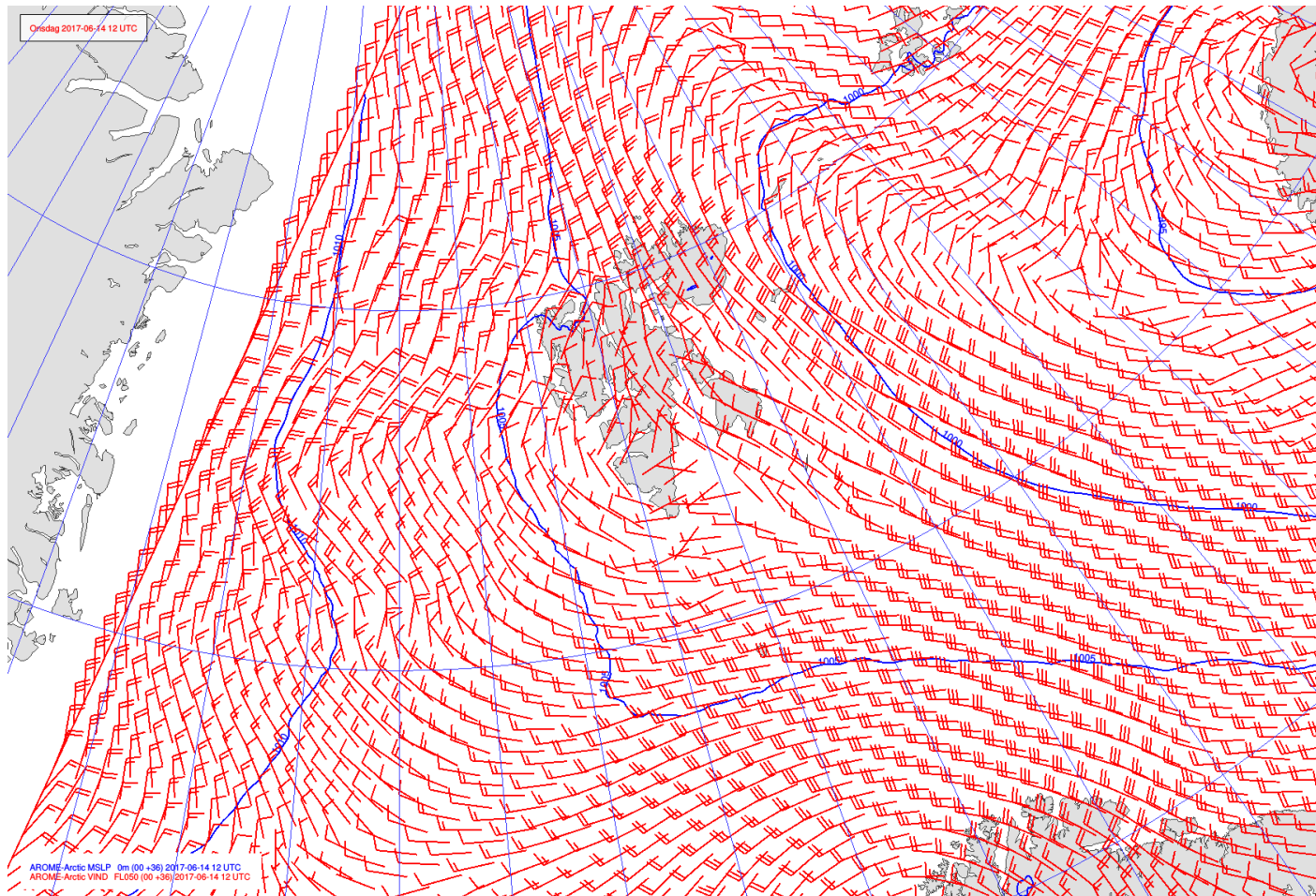
**Jun 14
12 UTC**



AROME-
Arctic

MSLP / V_{FL050}

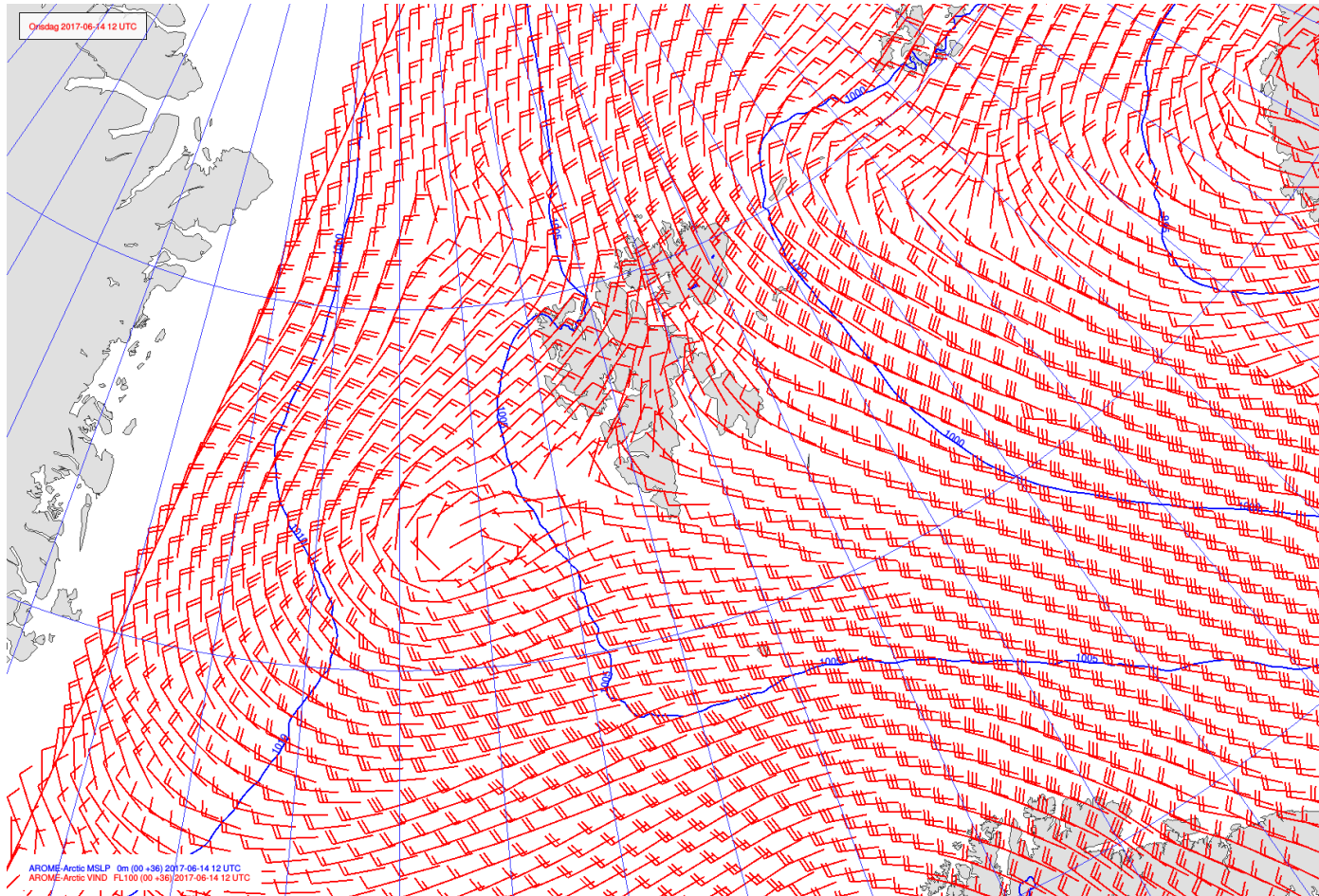
**Jun 14
12 UTC**



AROME-
Arctic

MSLP / V_{FL100}

**Jun 14
12 UTC**

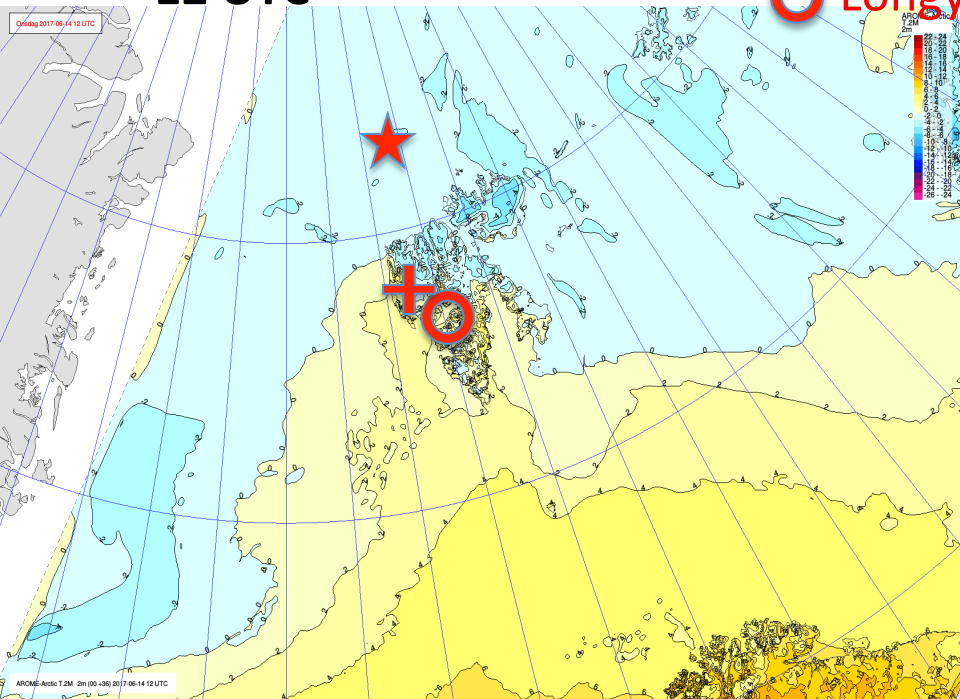


AROME-
Arctic

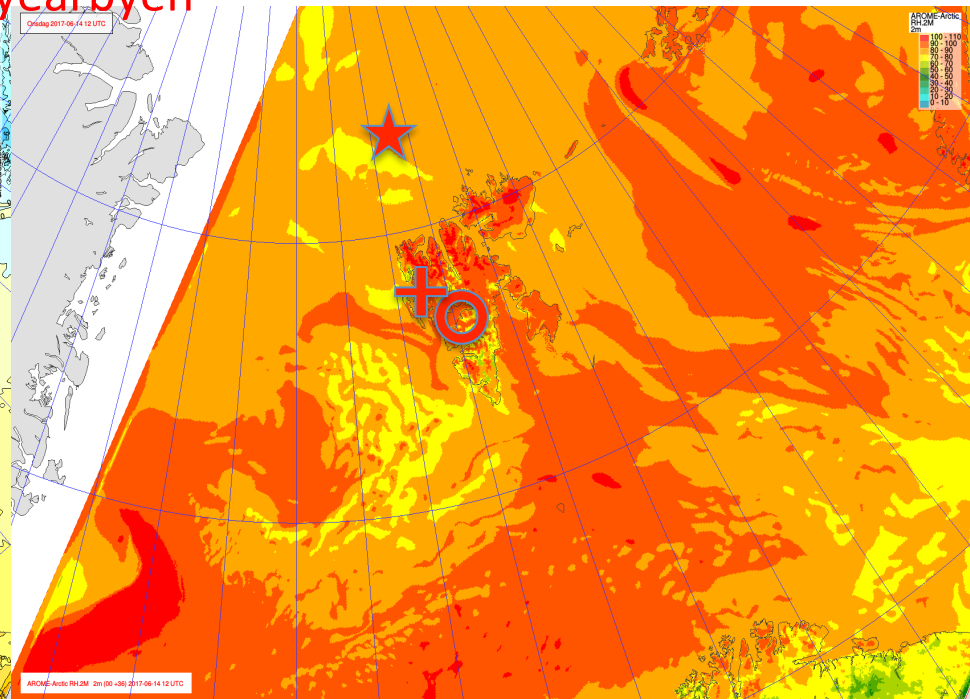
T_{2m} / RH_{2m}

- ★ Polarstern
- + Ny-Ålesund
- Longyearbyen

Jun 14
12 UTC



Temperature



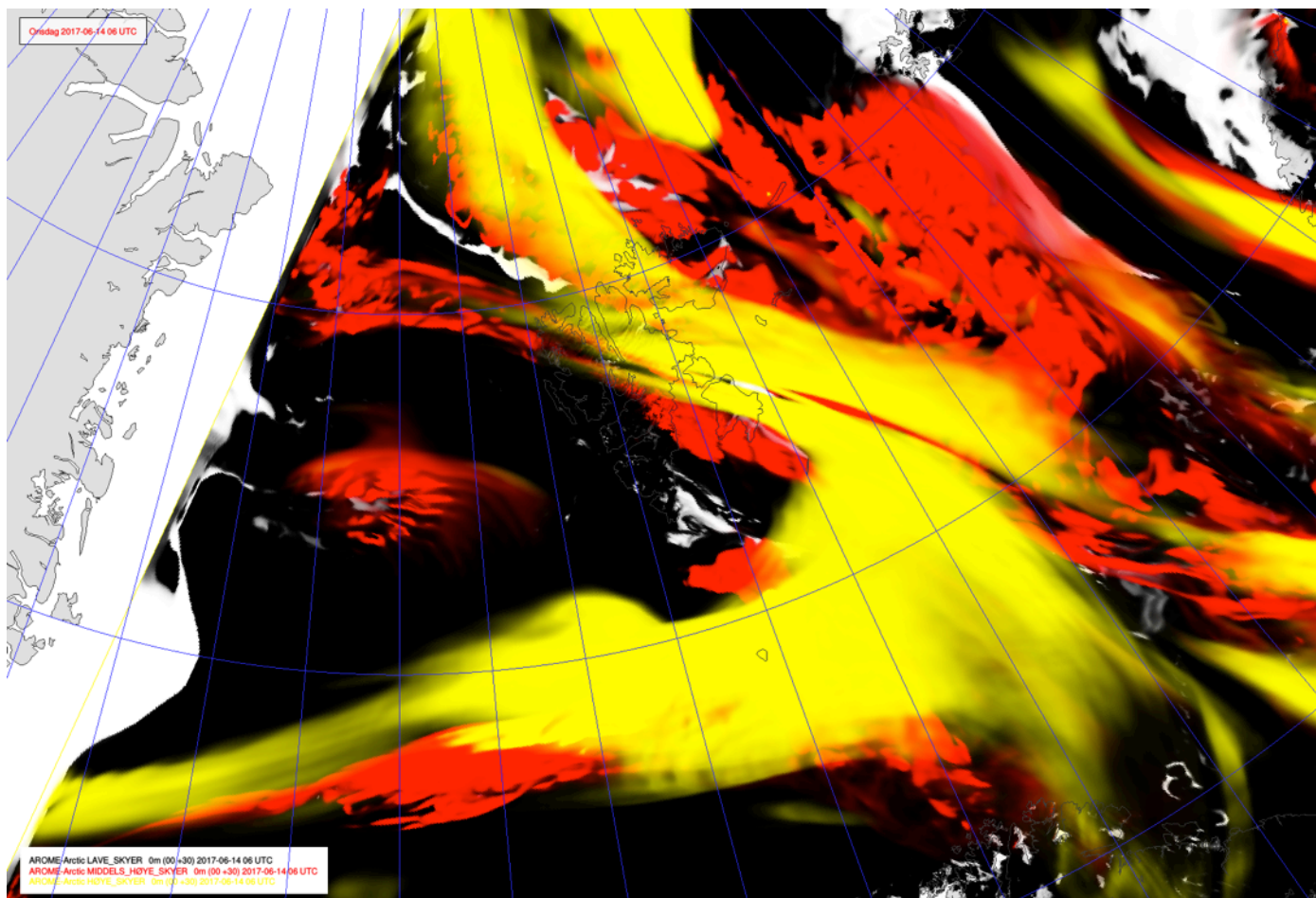
AROME-Arctic

Relative humidity

Cloud cover

Jun 14
06 UTC

Low / **Medium** / High

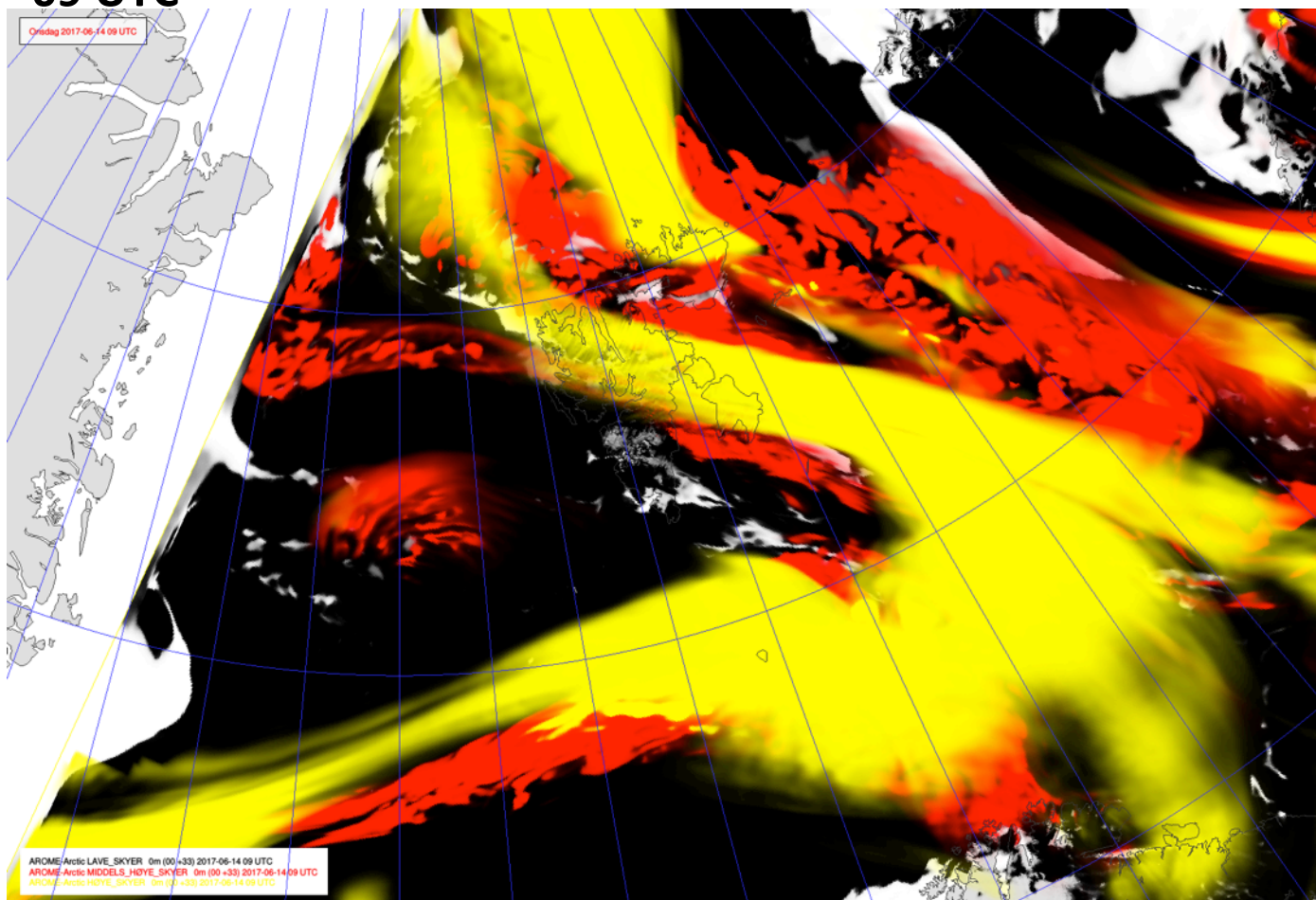


AROME-
Arctic

Cloud cover

**Jun 14
09 UTC**

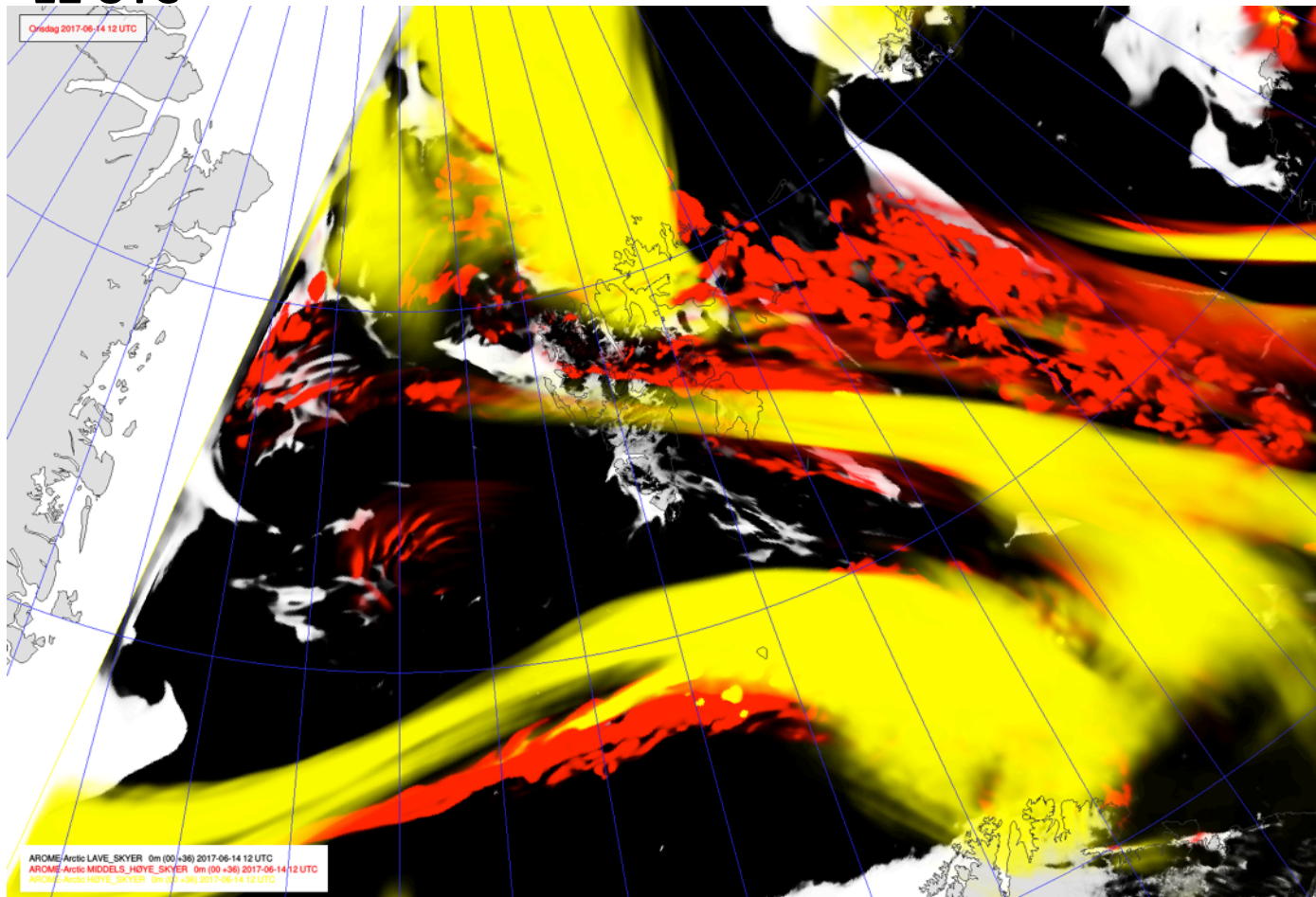
Low / **Medium** / High



Cloud cover

Jun 14
12 UTC

Low / **Medium** / High

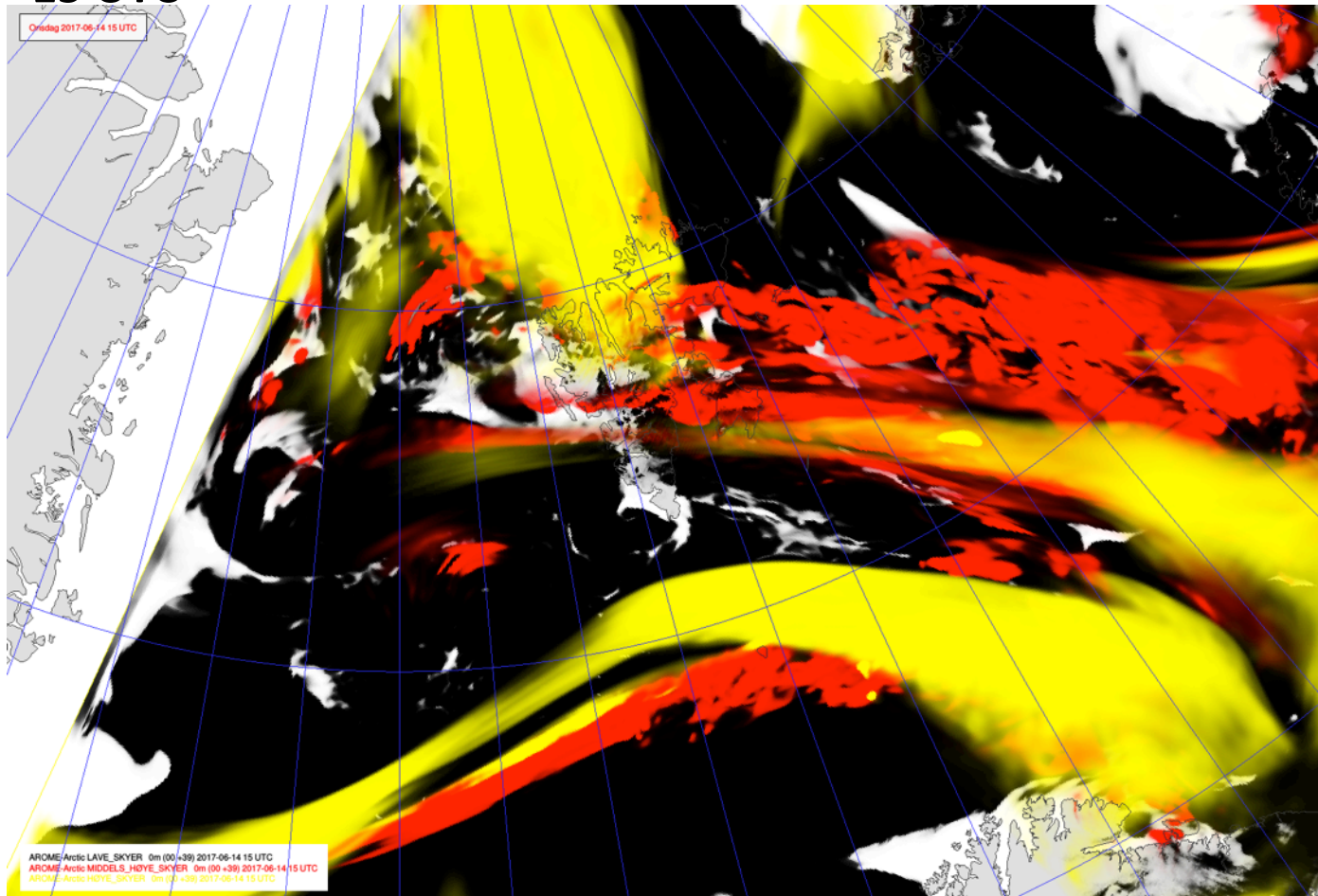


AROME-
Arctic

Cloud cover

**Jun 14
15 UTC**

Low / **Medium** / High

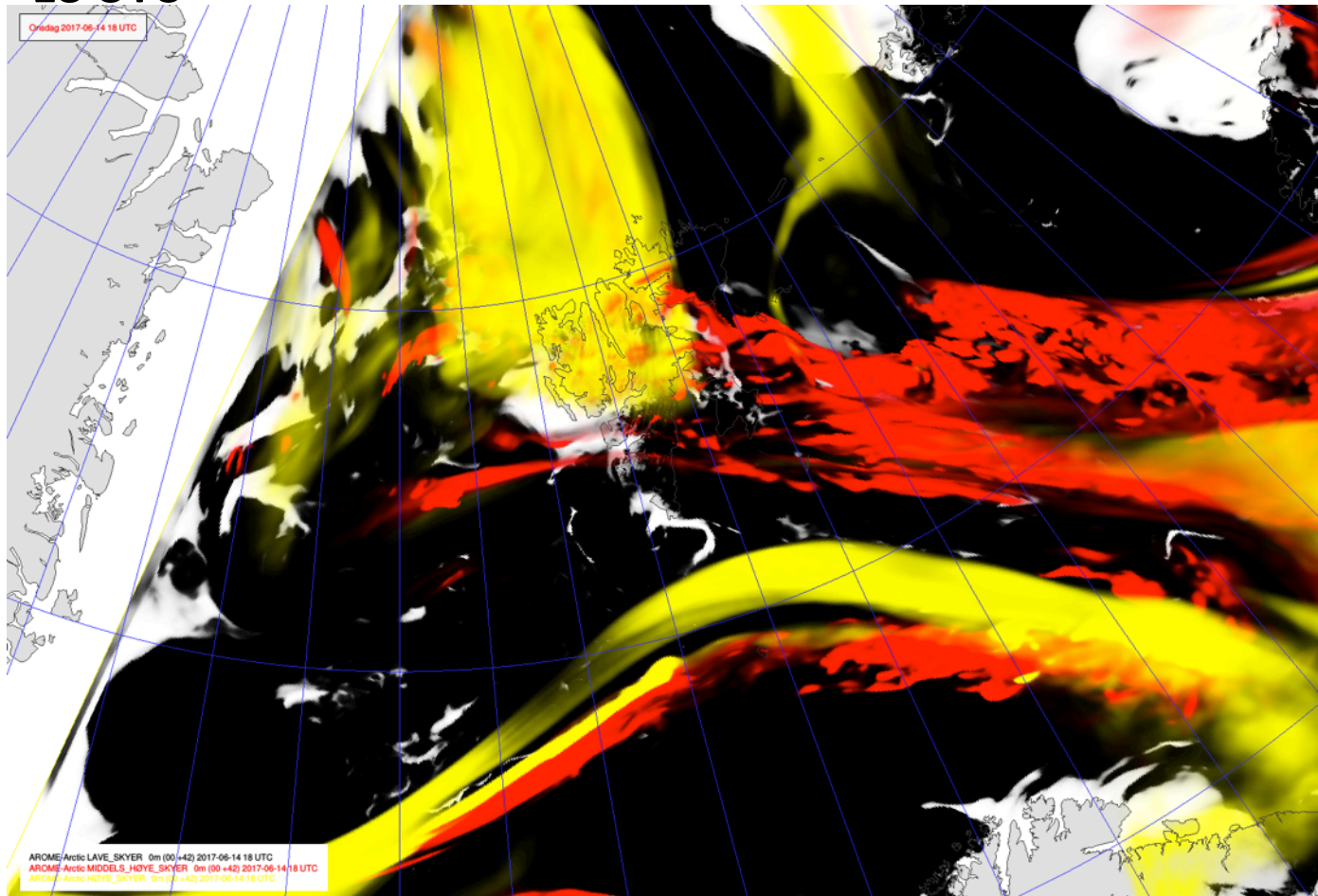


AROME-
Arctic

Cloud cover

**Jun 14
18 UTC**

Low / **Medium** / High

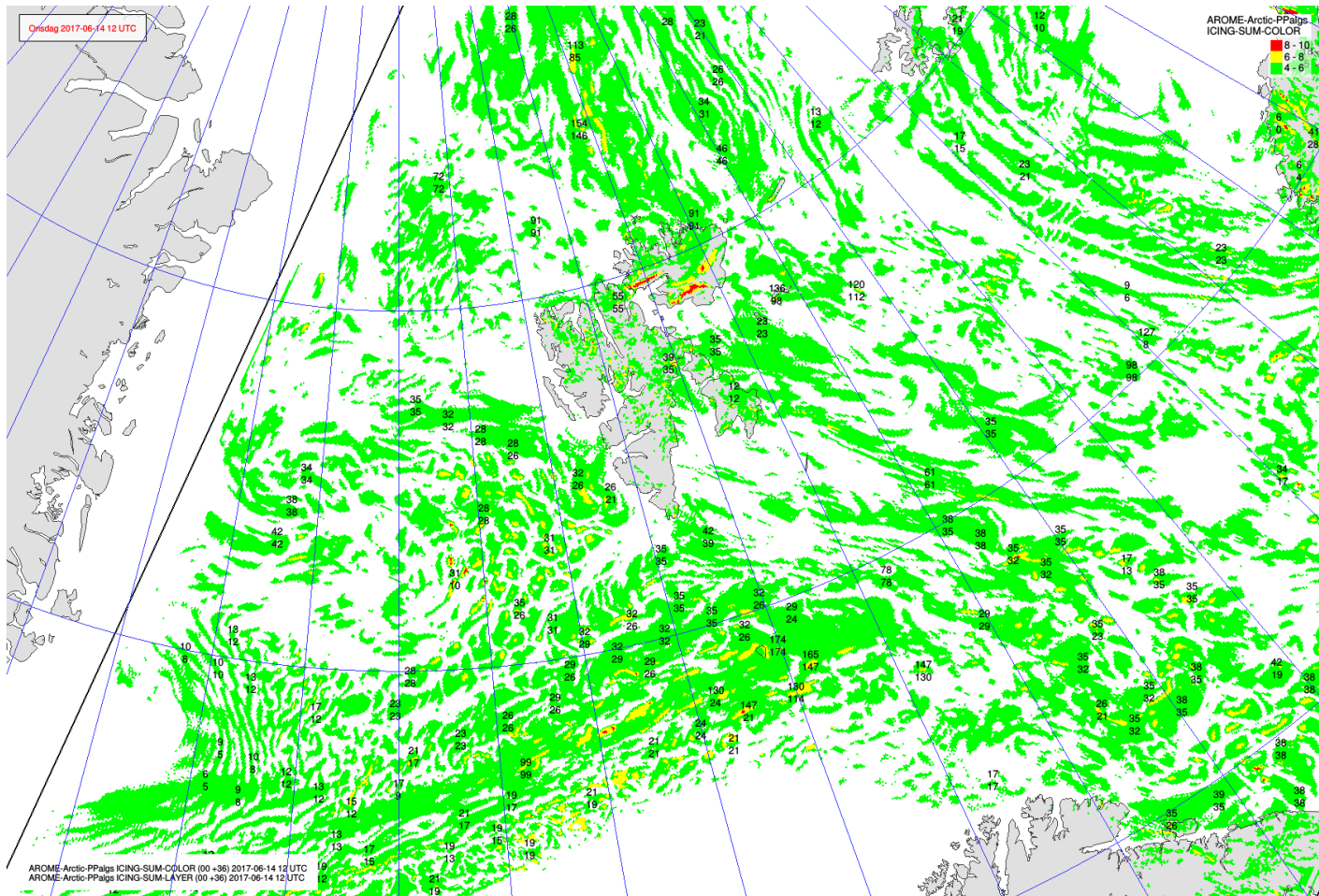


AROME-
Arctic

Cloud icing

**Jun 14
12 UTC**

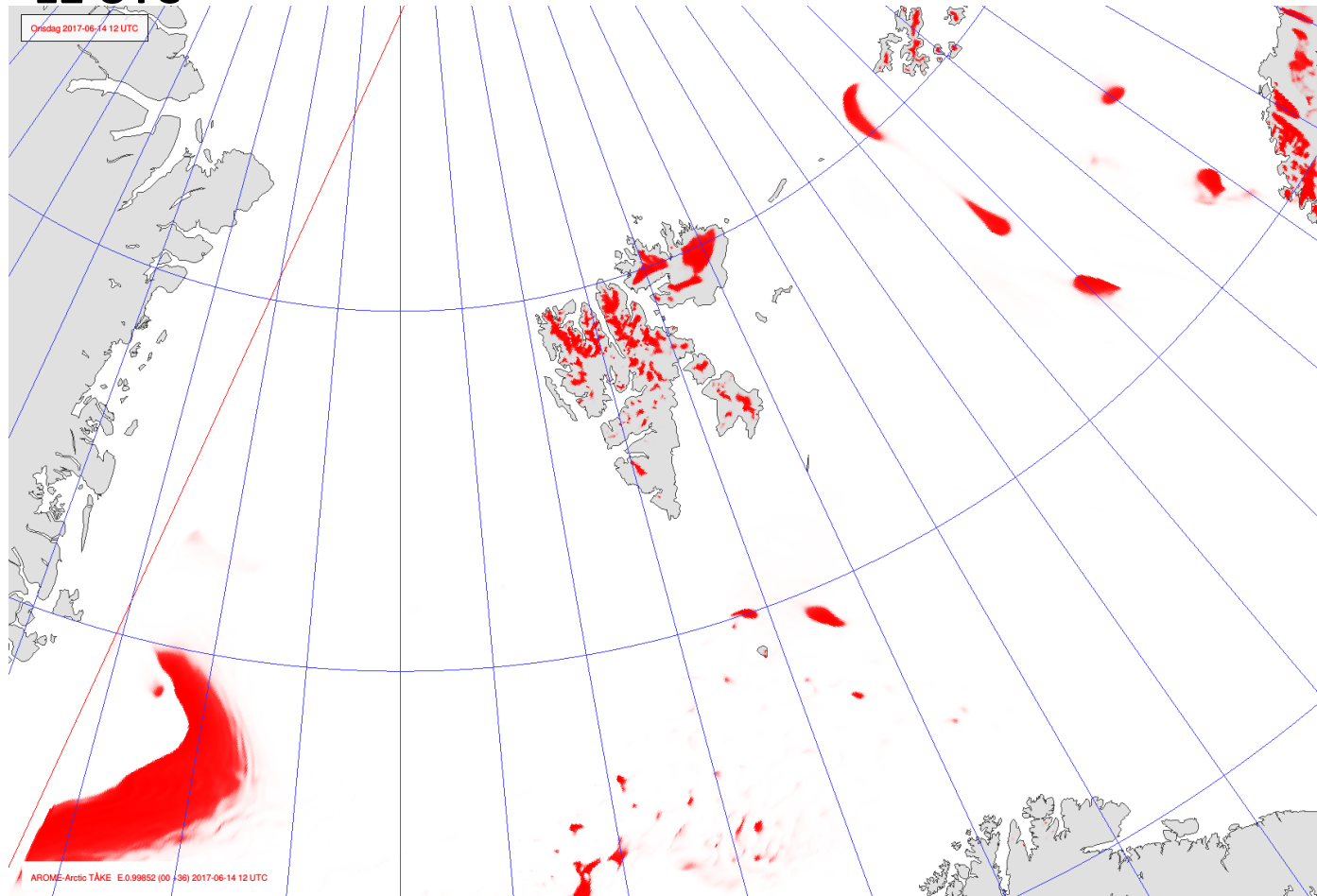
Feeble / Moderate / Heavy



AROME-
Arctic

Fog

**Jun 14
12 UTC**

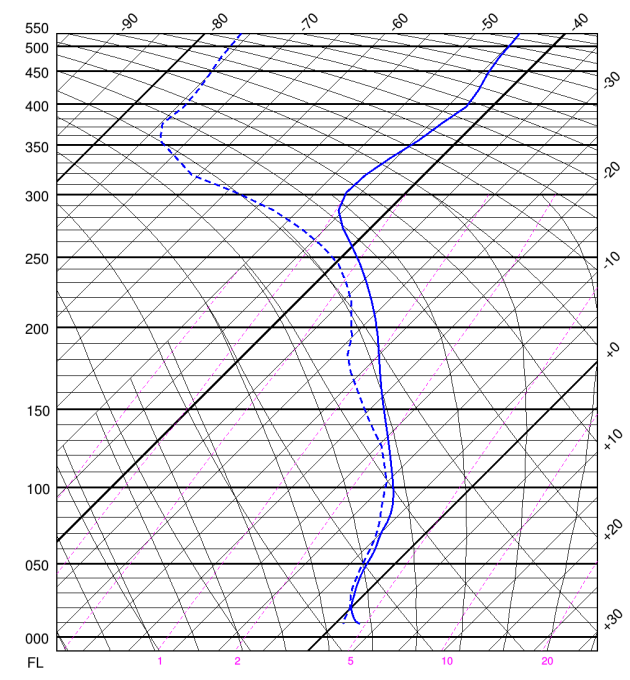


**AROME-
Arctic**

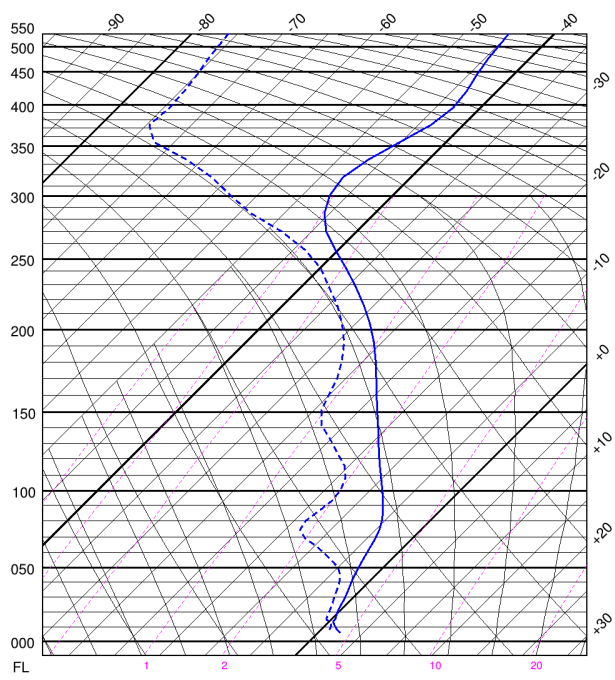
Vertical profile

Jun 14
12 UTC

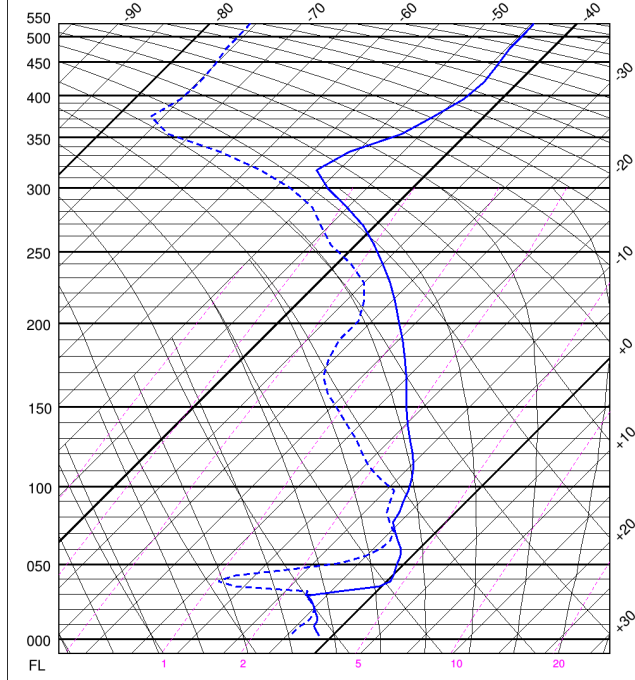
Longyearbyen



Ny-Ålesund



Polarstern

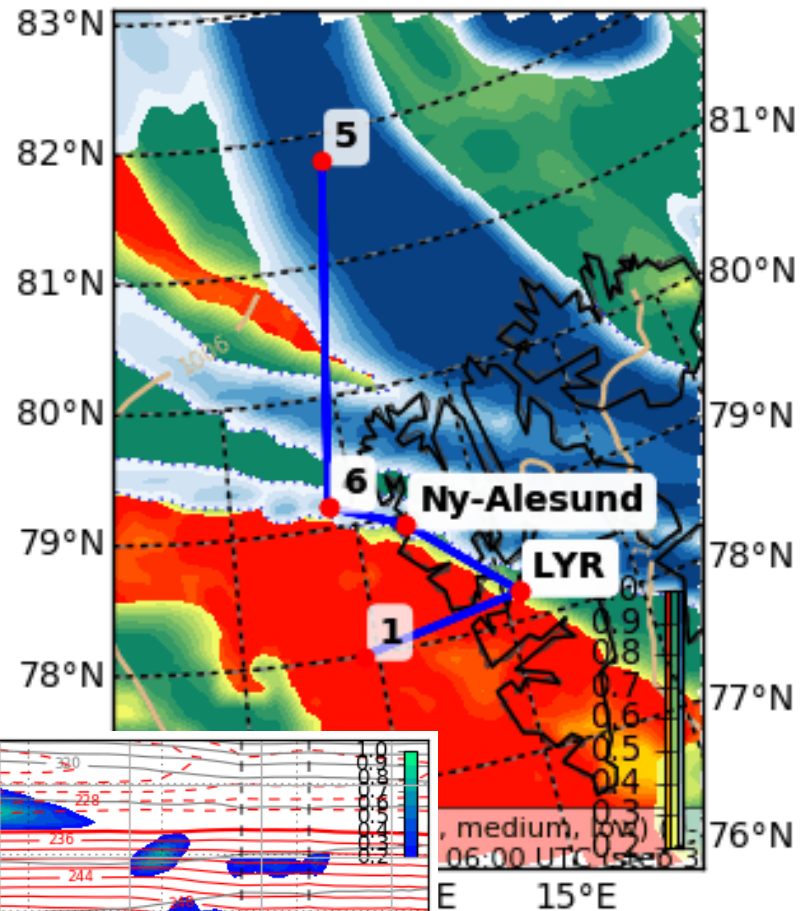


AROME-Arctic

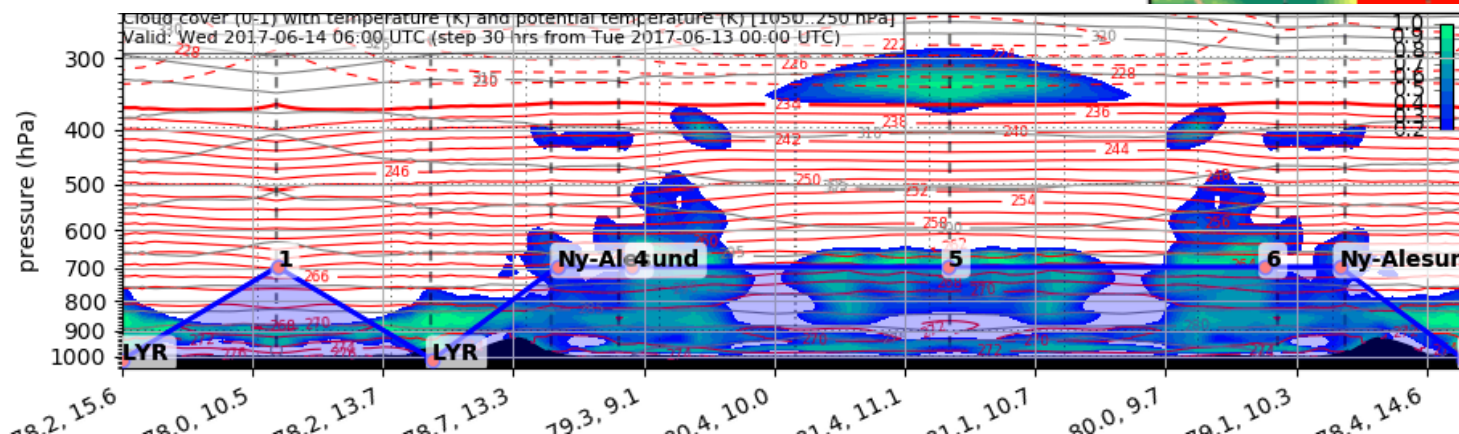
Cloud cover

Jun 14
06 UTC

Low
Medium
High



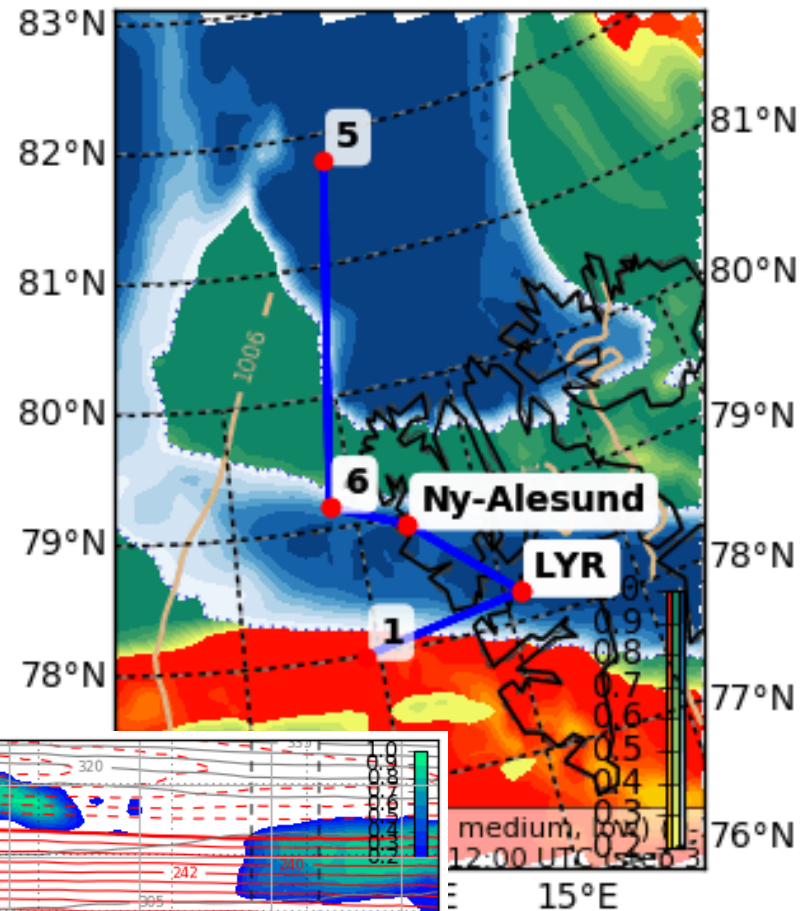
Cloud cover / T (K) / θ (K)



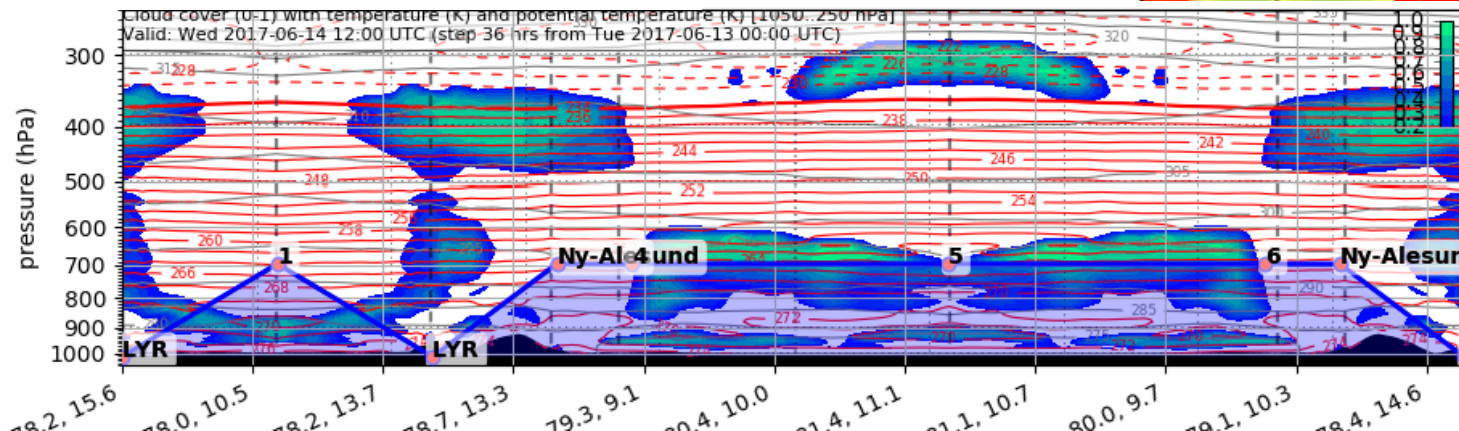
Cloud cover

Jun 14
12 UTC

Low
Medium
High



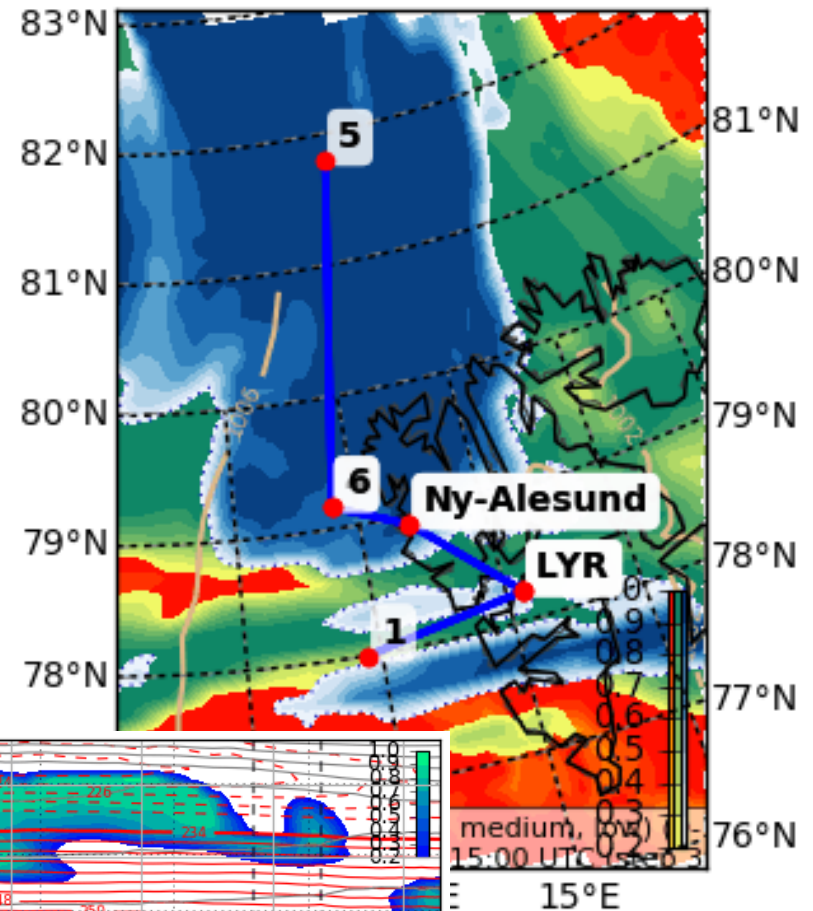
Cloud cover / T (K) / θ (K)



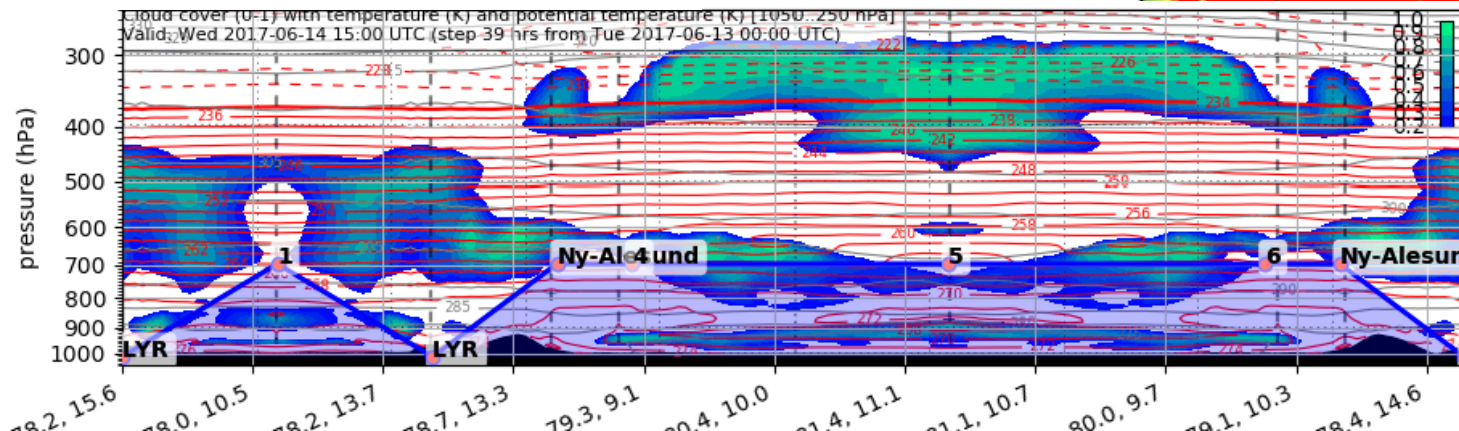
Cloud cover

Jun 14
15 UTC

Low
Medium
High



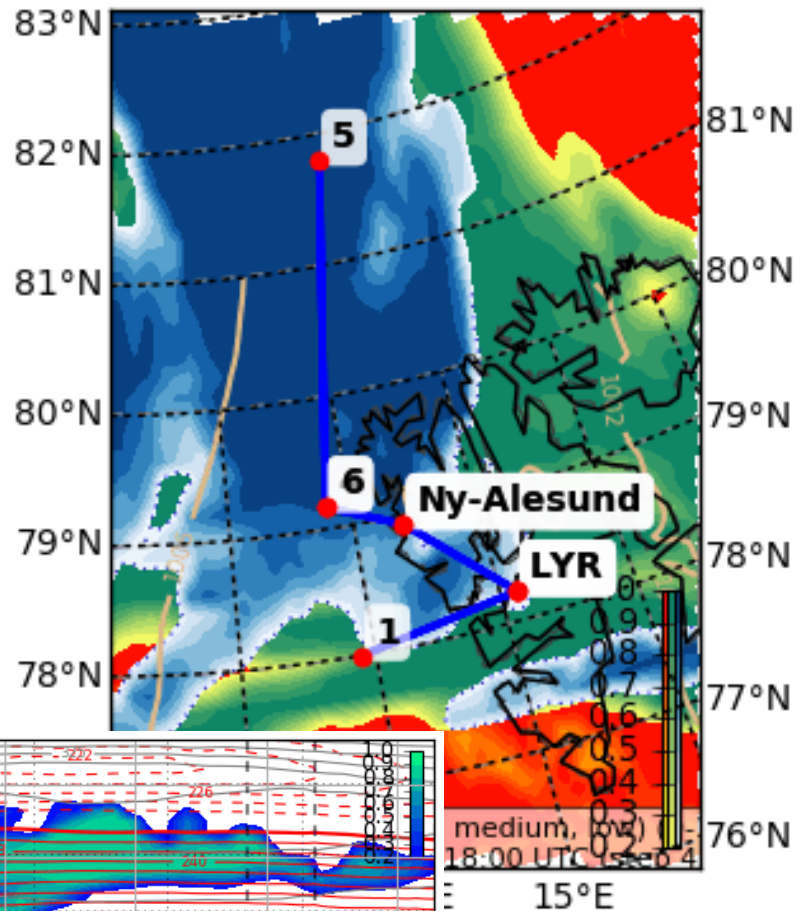
Cloud cover / T (K) / θ (K)



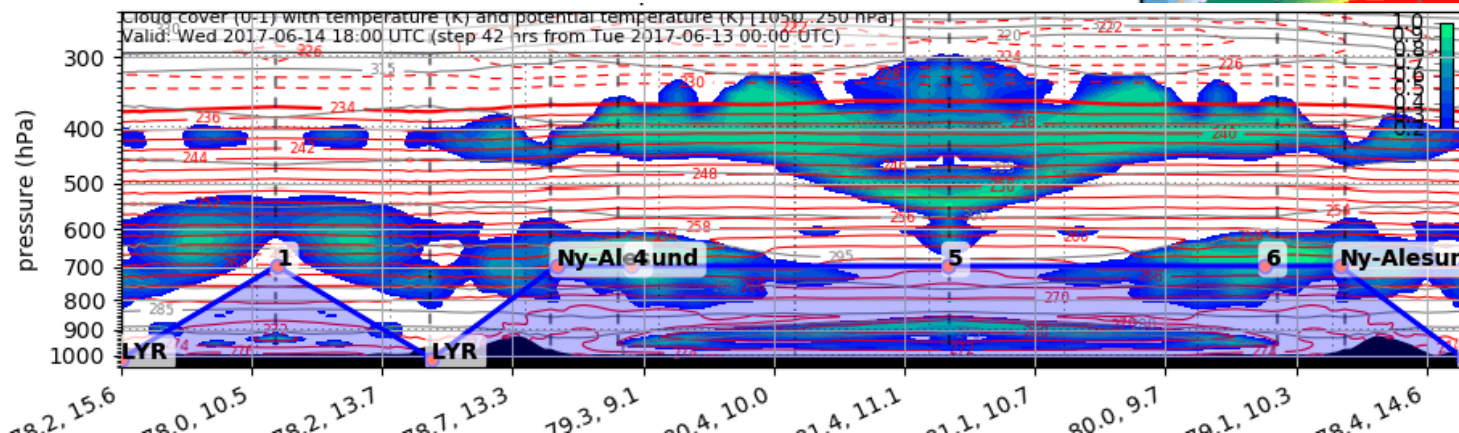
Cloud cover

Jun 14
18 UTC

Low
Medium
High



Cloud cover / T (K) / θ (K)



METAR and TAF

- Longyearbyen/Longyear (ENSB):
 - METAR 130750Z 26009KT 9999 OVC013 04/01 Q1008
RMK WIND 1400FT VRB03KT
 - TAF 130500Z 1306/1406 25008KT 9999 SCT008
BKN015 TEMPO 1306/1406 BKN008 PROB30 TEMPO
1306/1406 0500 FG VV003
 - No SIGMET/AIRMET
- Ny-Ålesund/Hamnerabben (ENAS):
 - METAR 130550Z 29005KT 9999 OVC004 02/00 Q1009

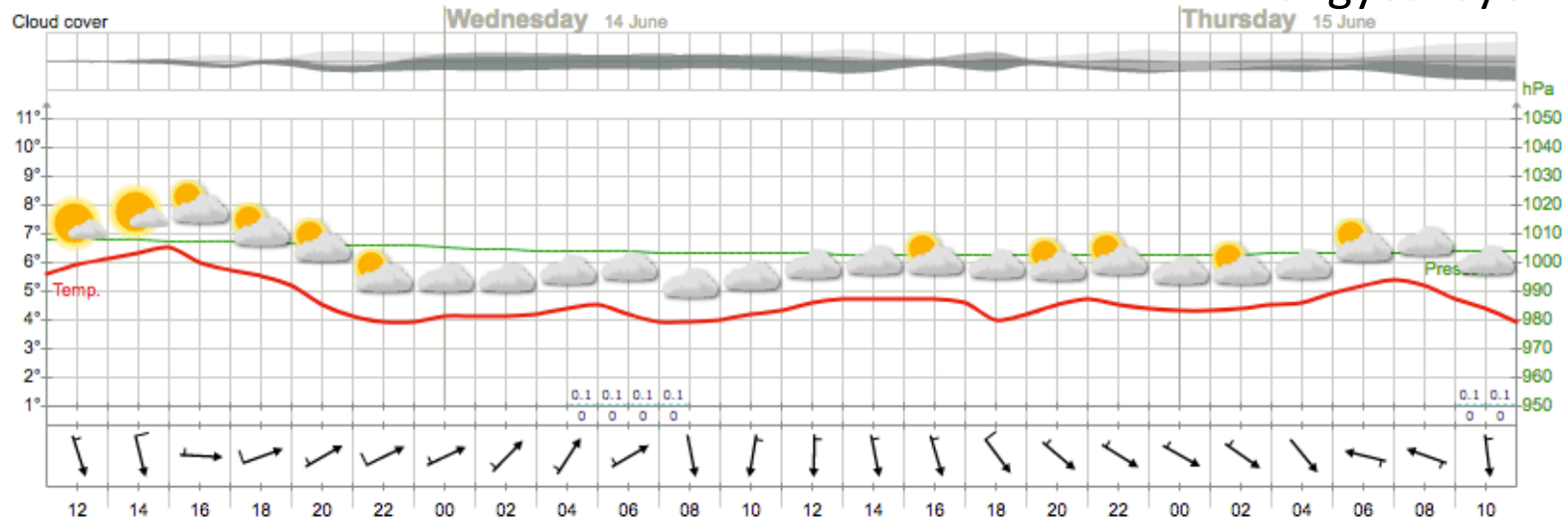
Outlook

Thu 15 – Sat 17 June 2017

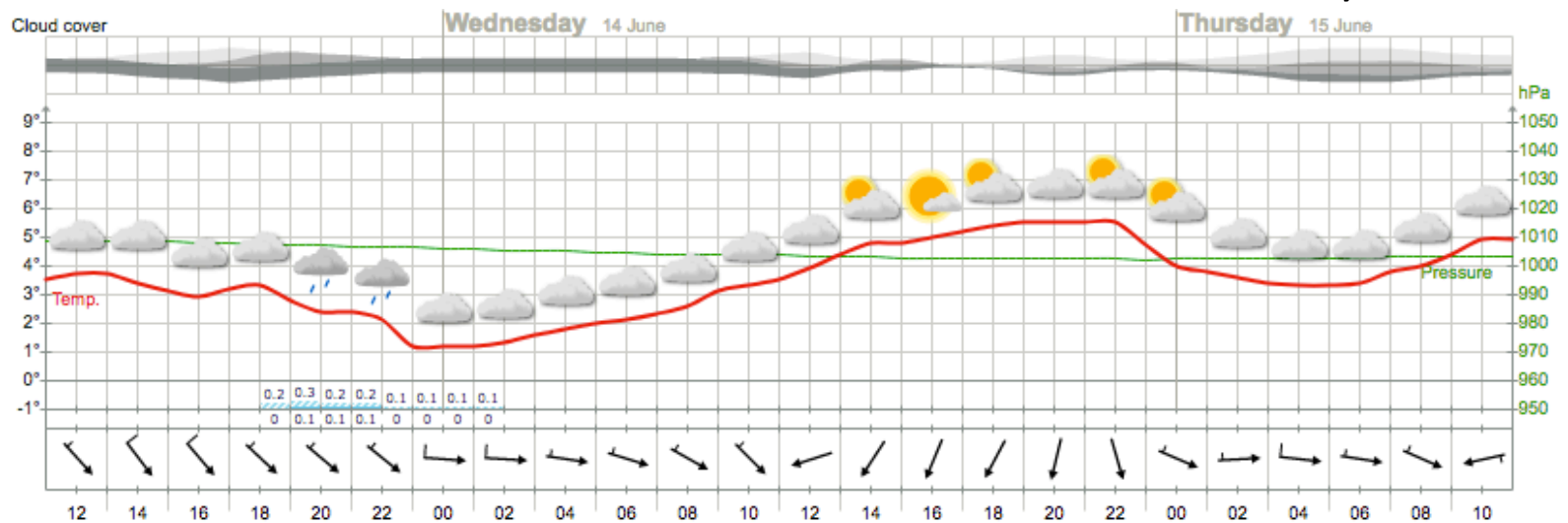
Meteogram

Jun 13-15

Longyearbyen

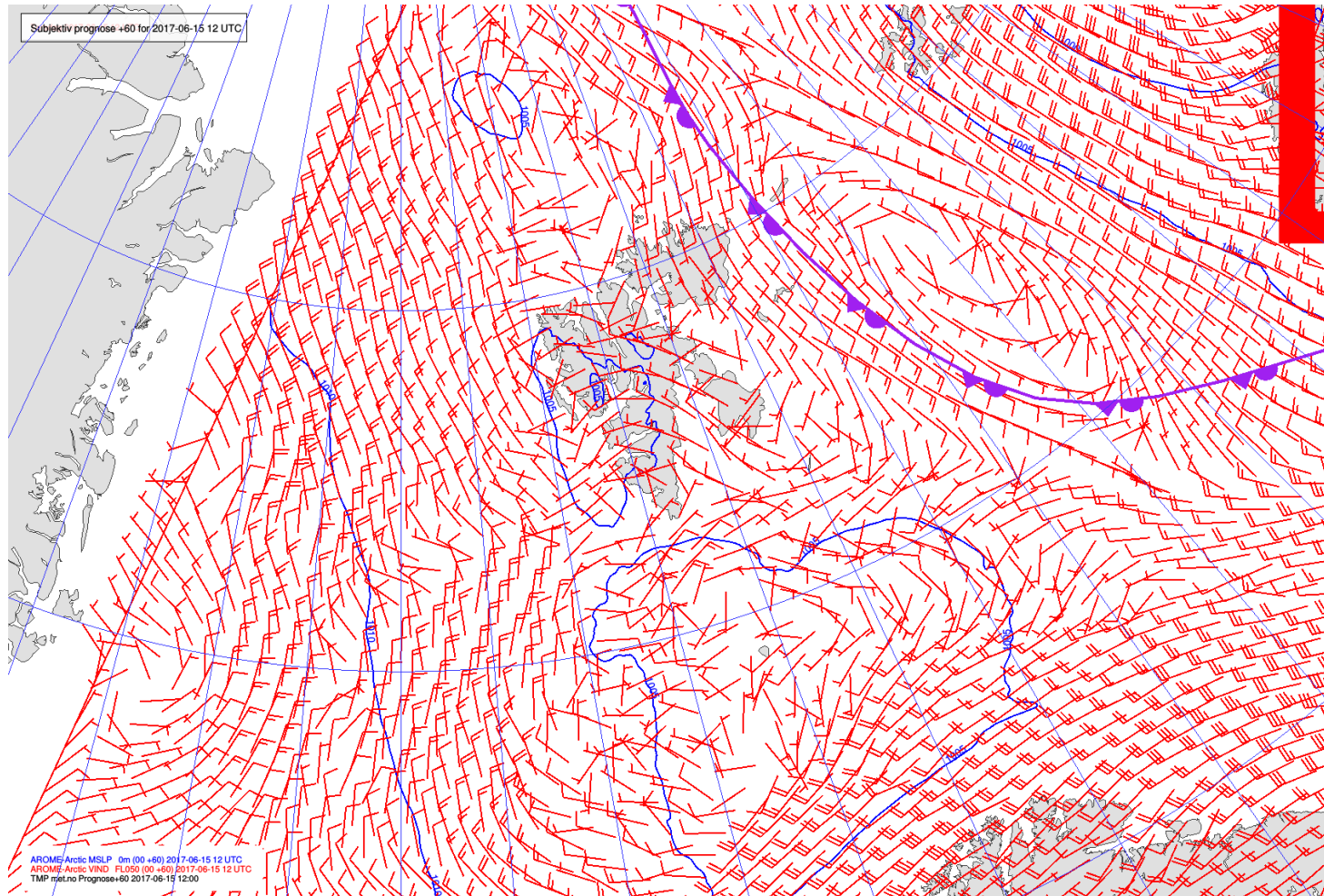


Ny-Ålesund



MSLP / Fronts / v_{FL050}

Jun 15
12 UTC

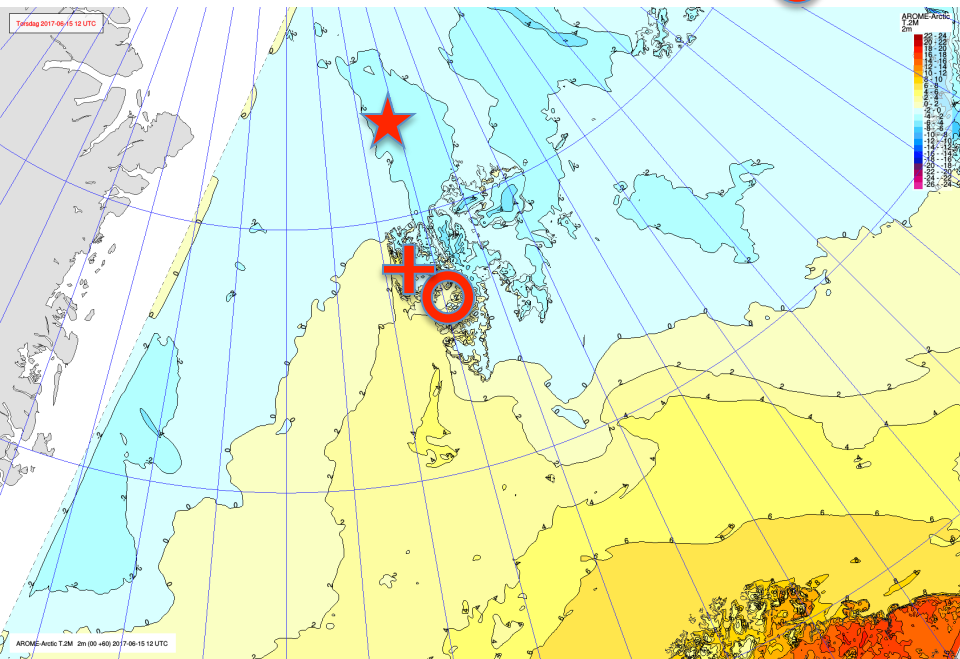


AROME-
Arctic

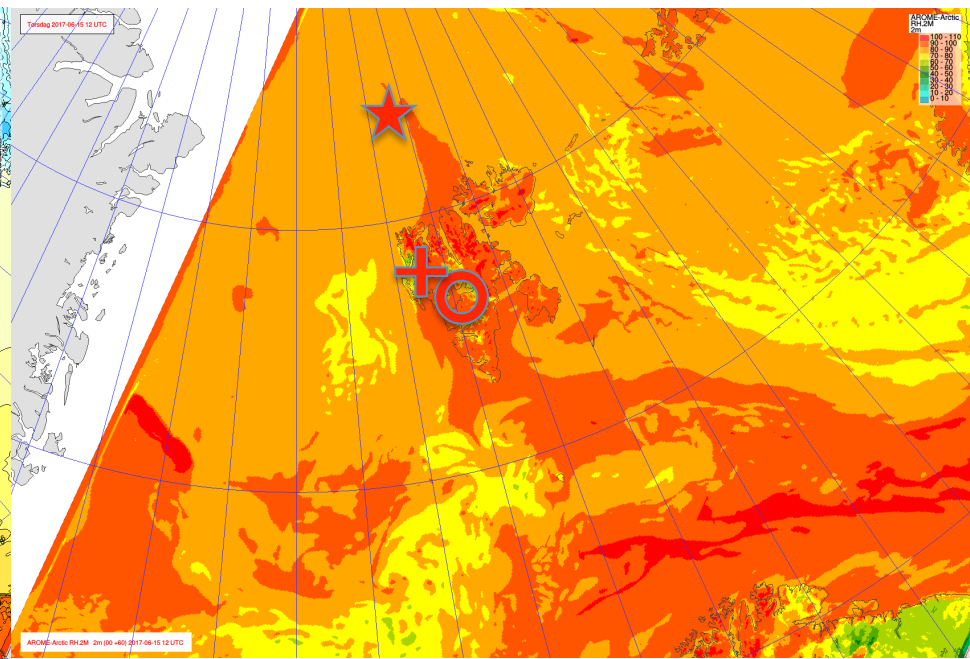
T_{2m} / RH_{2m}

Jun 15
12 UTC

- ★ Polarstern
- + Ny-Ålesund
- Longyearbyen



Temperature



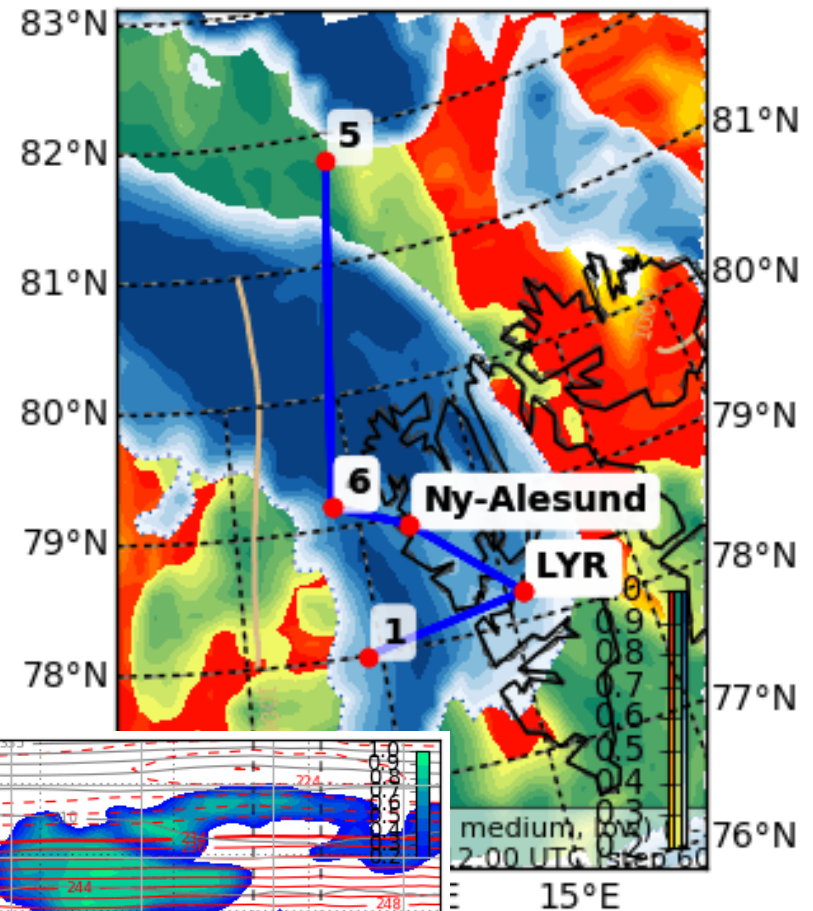
AROME-Arctic

Relative humidity

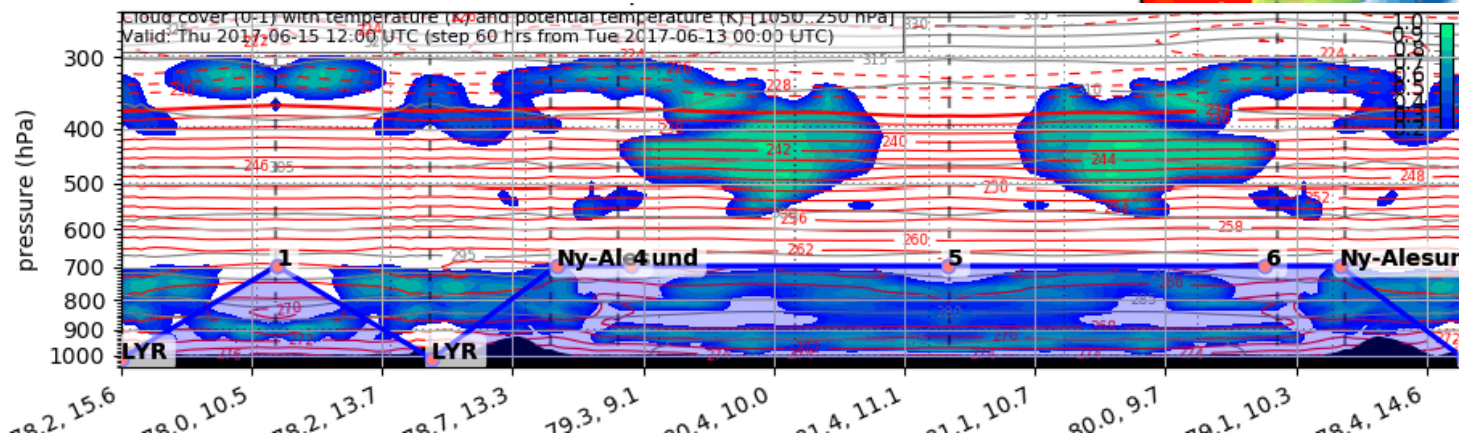
Cloud cover

Jun 15
12 UTC

Low
Medium
High



Cloud cover / T (K) / θ (K)

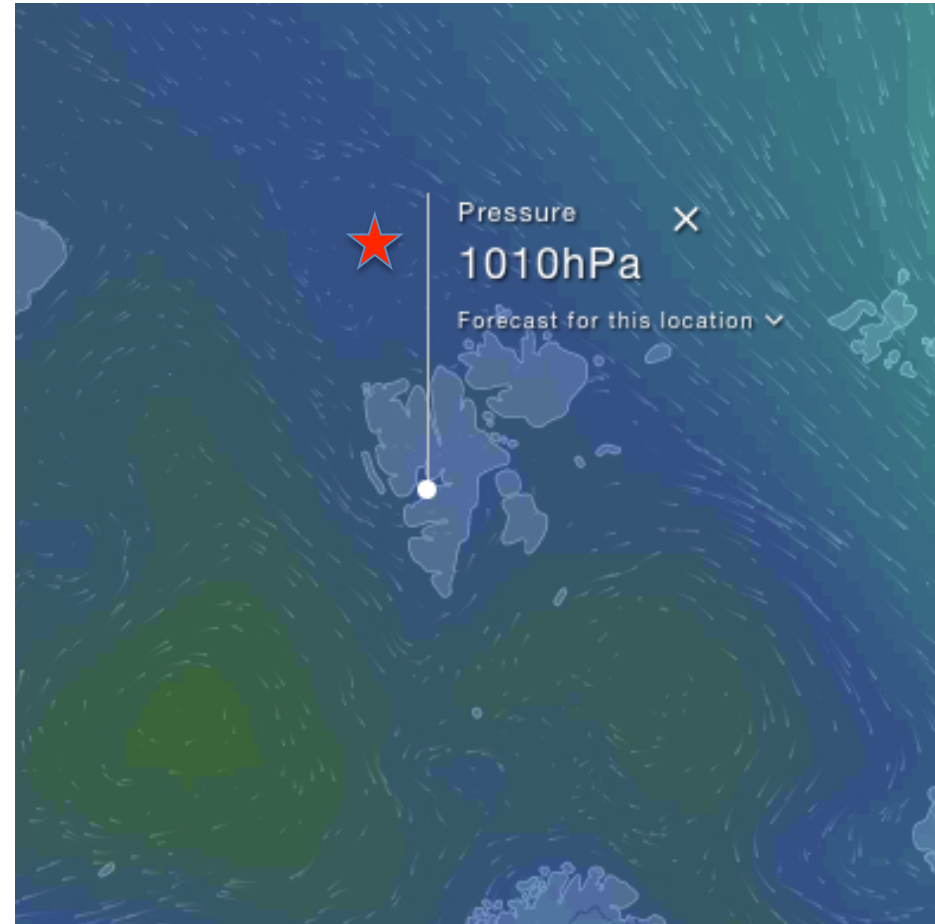
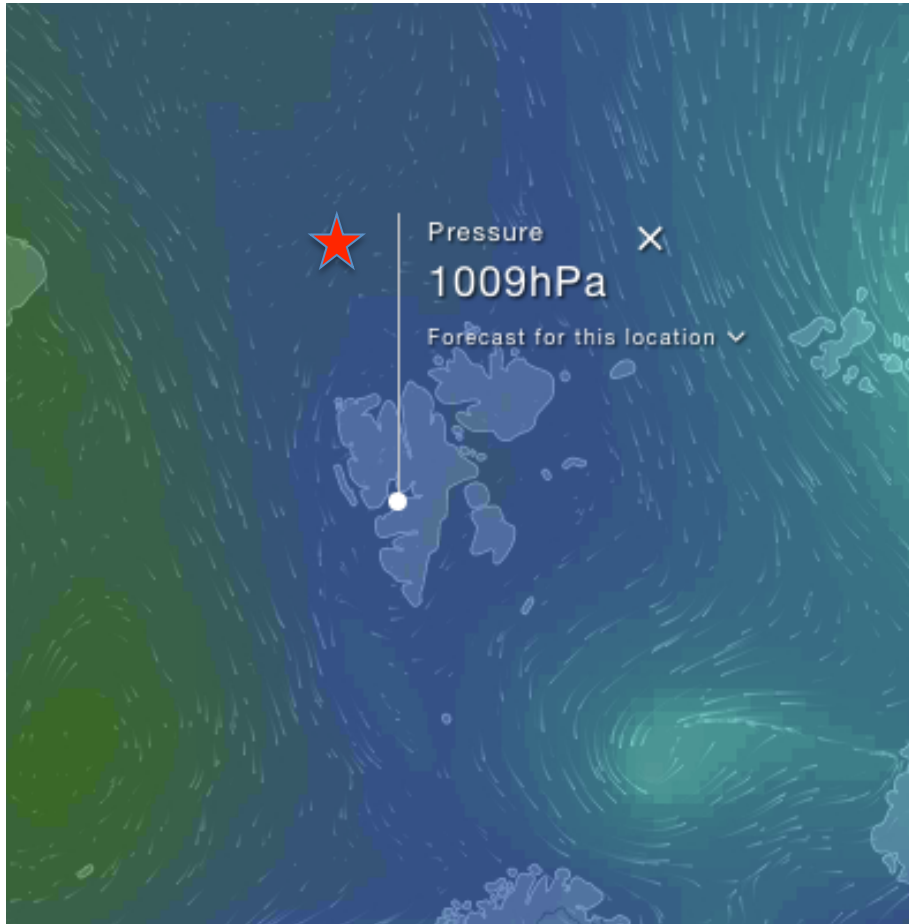


MSLP / v_{surf}

Jun 16
12 UTC

★ Polarstern

Jun 17
12 UTC



ECMWF