

# Weather briefing

ACLOUD Longyearbyen, Svalbard

Fri 09 June 2017 – **Sat 10 June** – Tue 13 June 2017

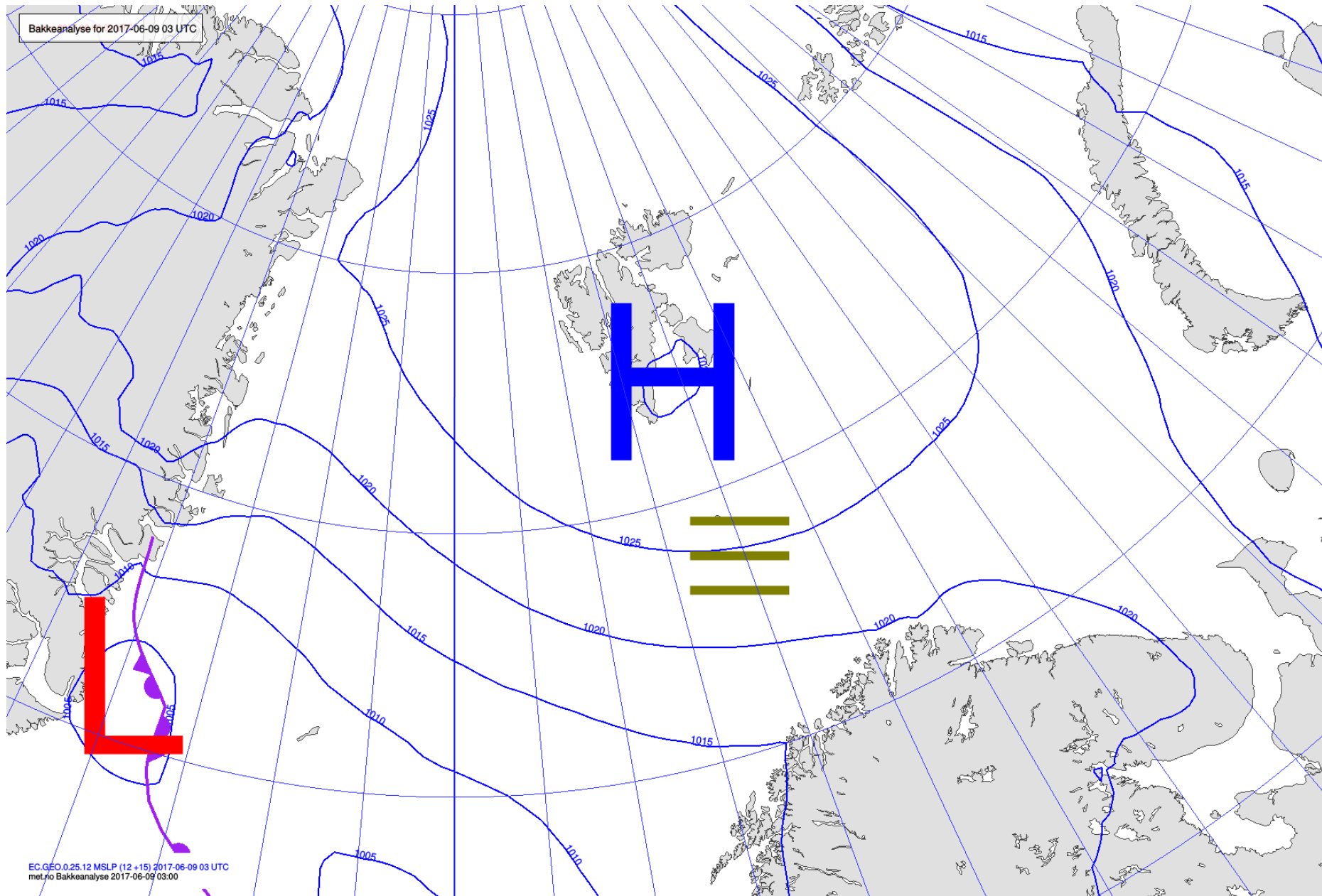
## Summary

Spitsbergen is still mainly influenced by a high pressure system with a weak pressure gradient. Therefore wind speeds stay low while coming from changing directions, the main component being west. To the west and north of the archipelago broken low clouds can be found. Above that there are medium and high clouds to the northwest of Spitsbergen.

Tomorrow the wind stays calm. The higher clouds will mostly be gone. The remaining clouds are very low and will touch the ground in some areas.

- Position of Polarstern (semi stationary) 81.94° N, 10.92° E

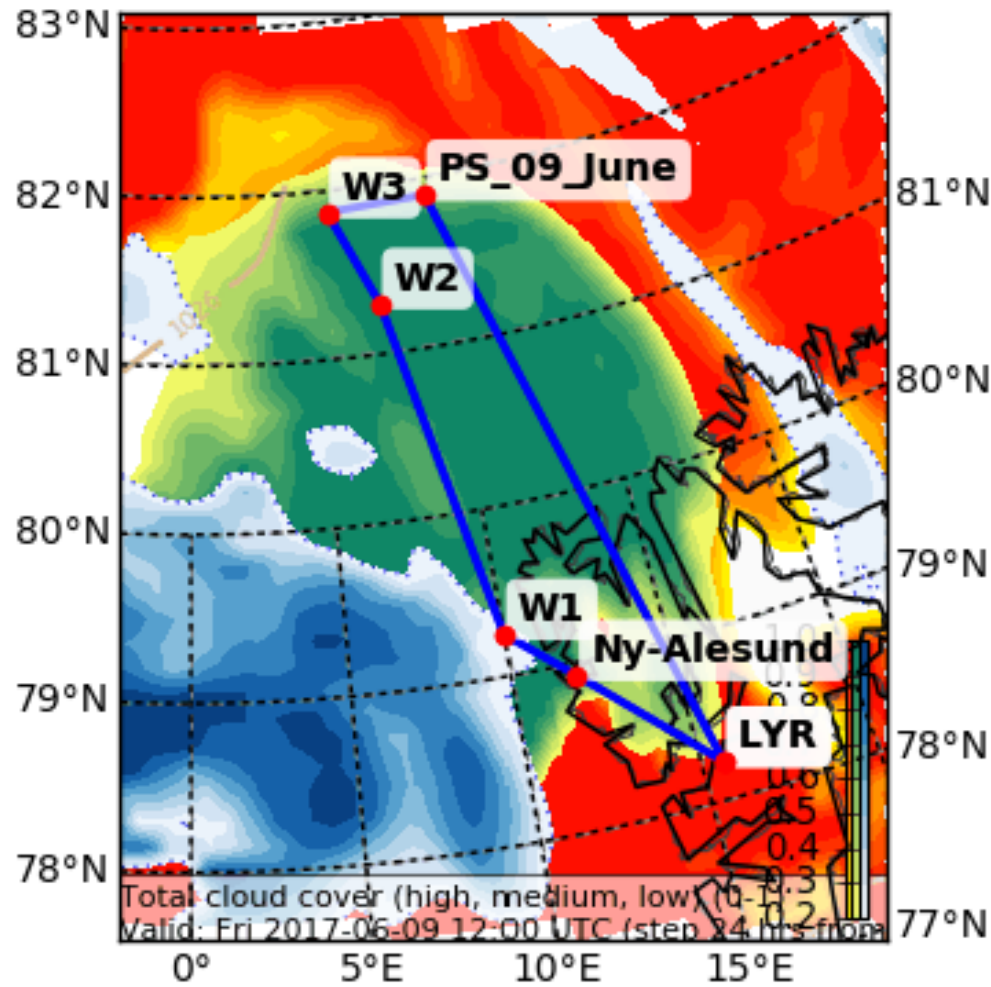
# Analysis 09 June 2017 @ 03 UTC



# Today 12 UTC

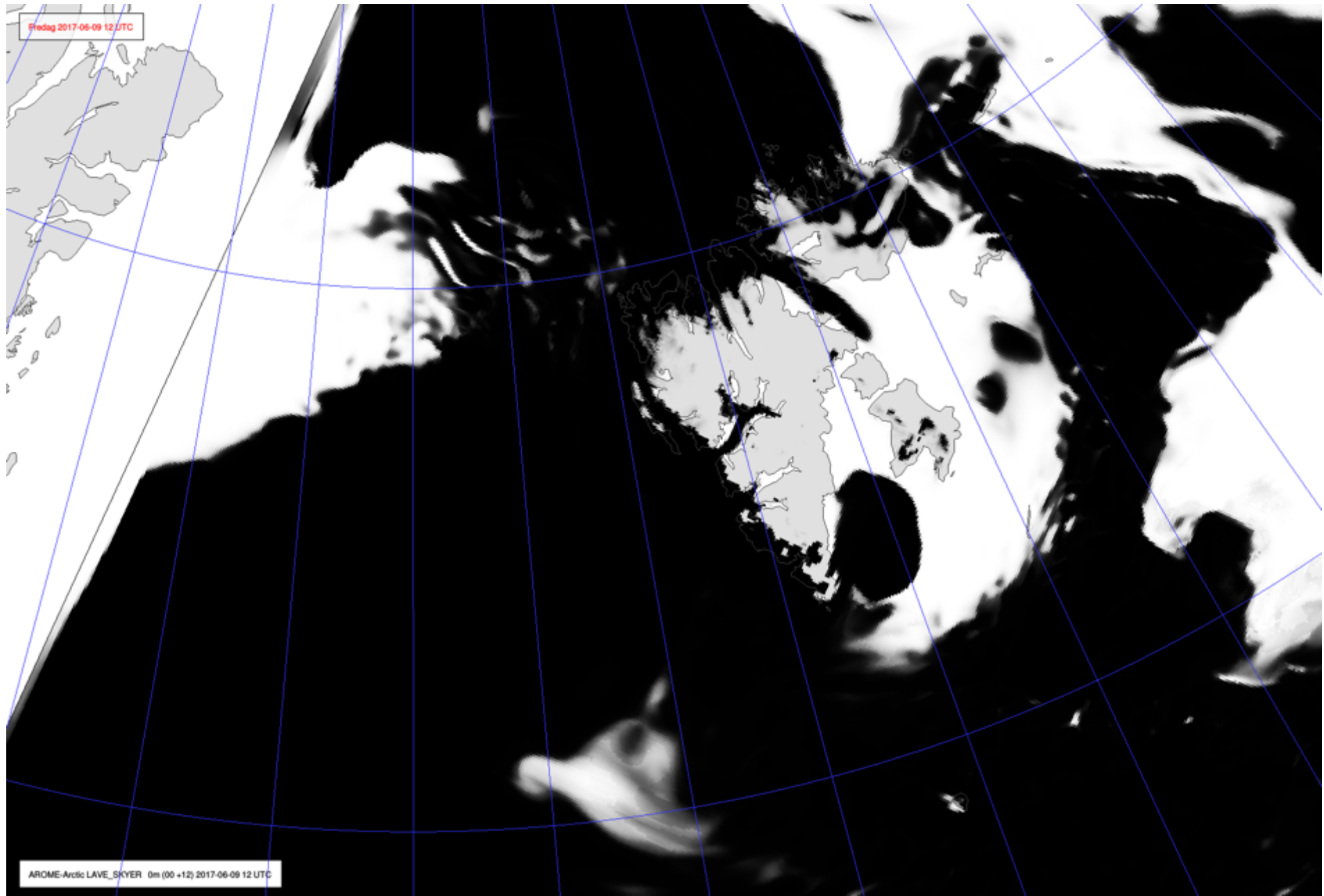
Cloud Cover (0-1) (Total Cloud Cover)

Valid: Fri 2017-06-09 12:00 UTC (step 24 hrs from Thu 2017-06-08 1





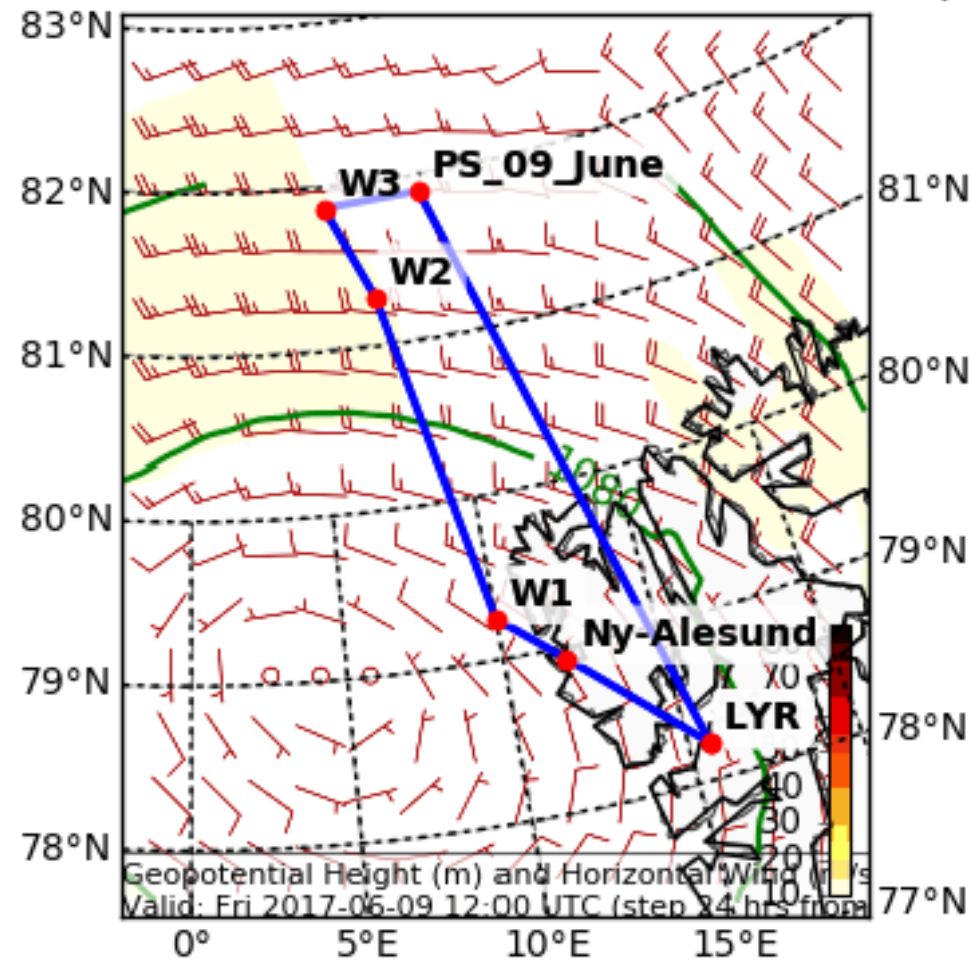
# Cloud 09 June 2017 @ 12 UTC



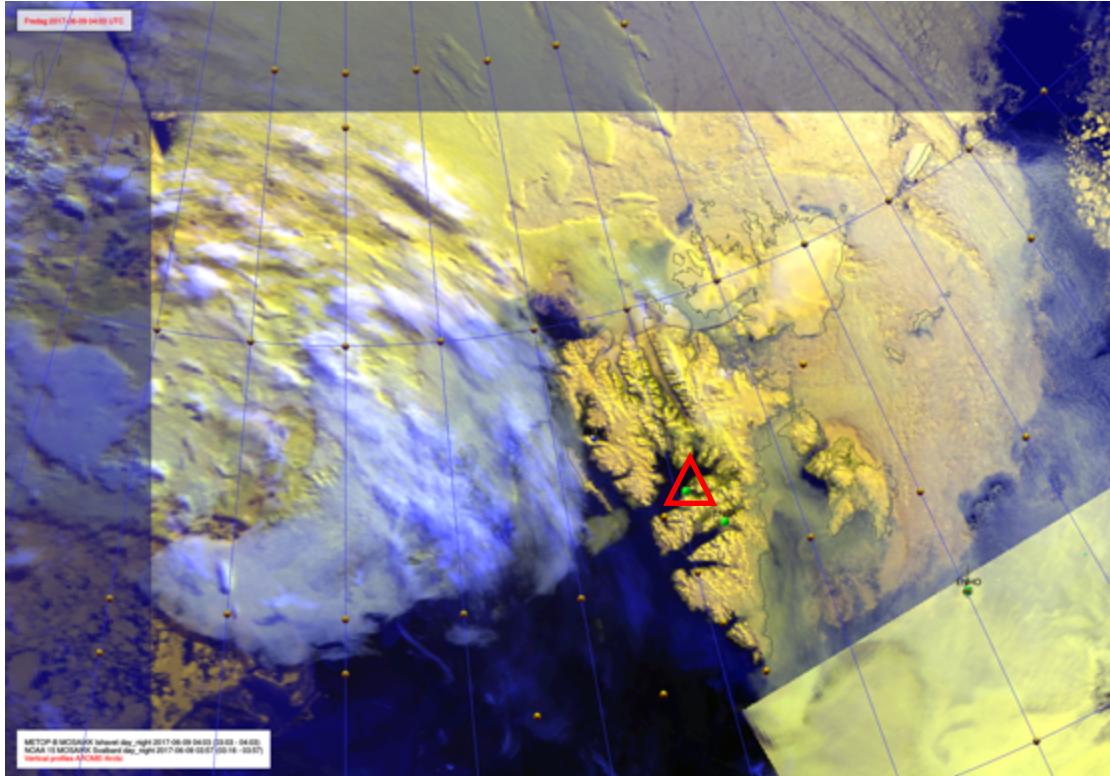
# Wind

## Today 12 UTC

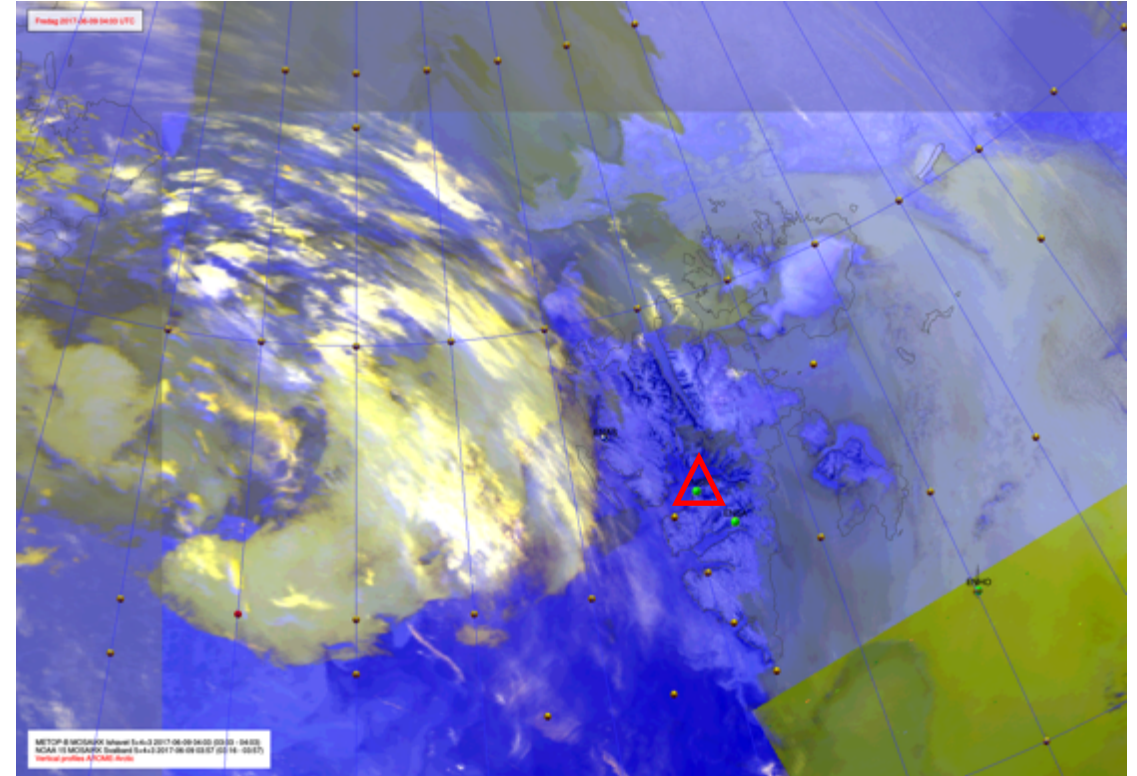
Geopotential Height (m) and Horizontal Wind (m/s) (Wind Speed 10-85 m/s)  
Valid: Fri 2017-06-09 12:00 UTC (step 24 hrs from Thu 2017-06-08 12:00 UTC)



# NOAA-19 09 June 2017 @ 3:03-4:03 UTC



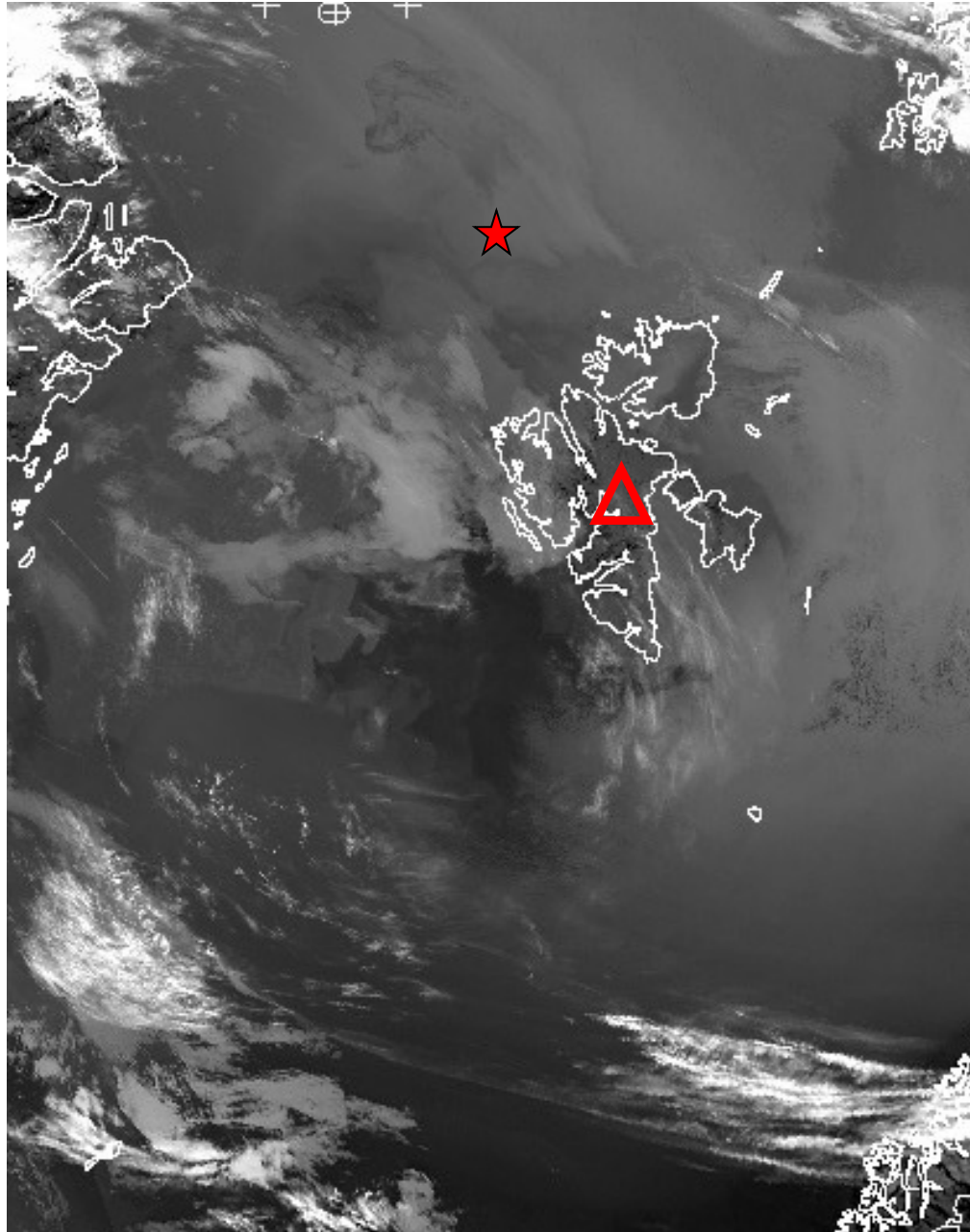
10.8  $\mu\text{m}$



IR, Ch 5+4+3



**NOAA-19 09 June 2017 @ 08:23 UTC**



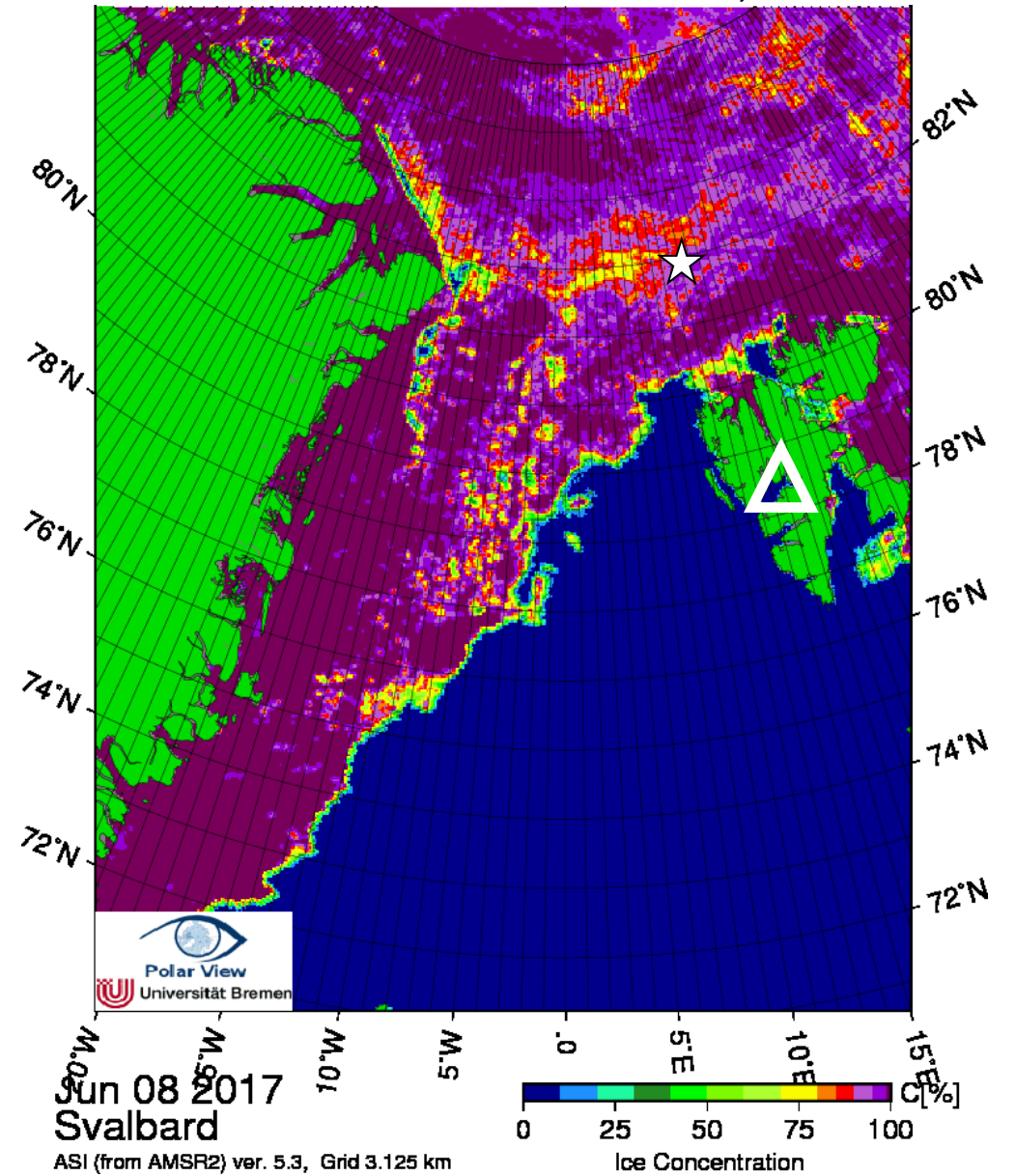
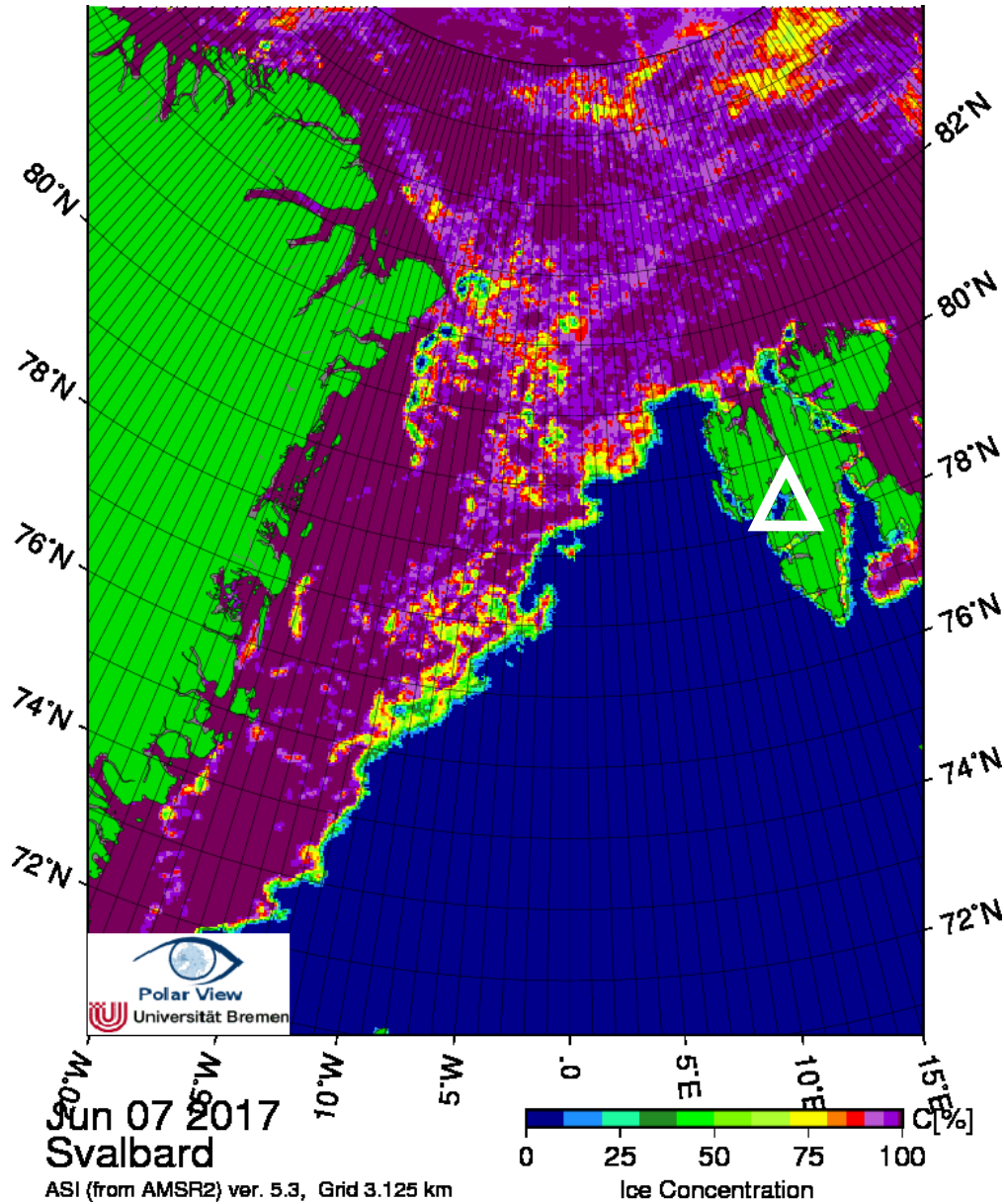
★ RV Polarstern (81.95° N, 10.46° E)

**08:23**

**10.8 μm**

# Arctic sea ice 7 June & 8 June 2017

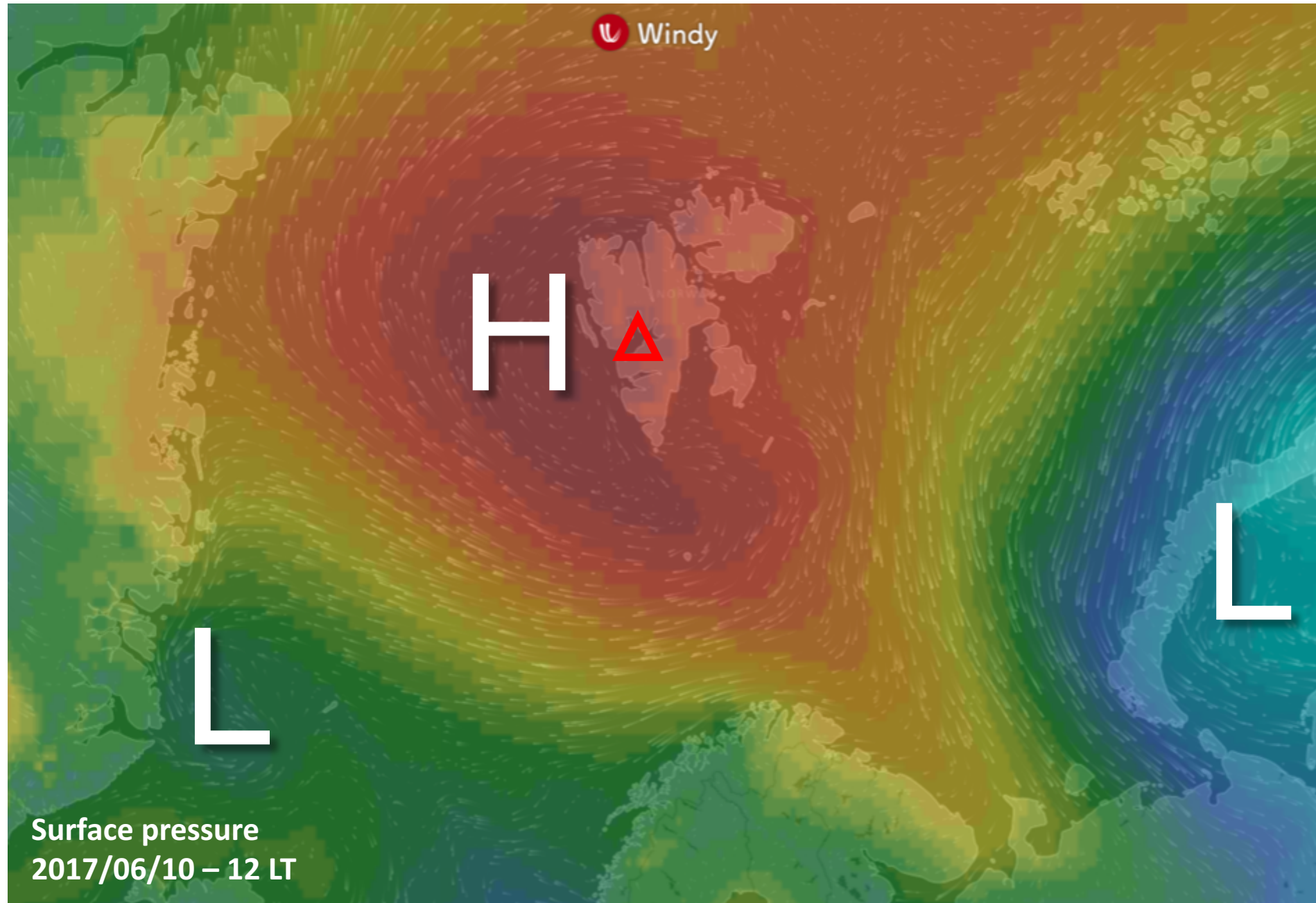
☆ RV Polarstern 5 June 81.94° N, 10.92° E



# Tomorrow

**Sat 10 June 2017**

# General Situation Sat 10 June 2017



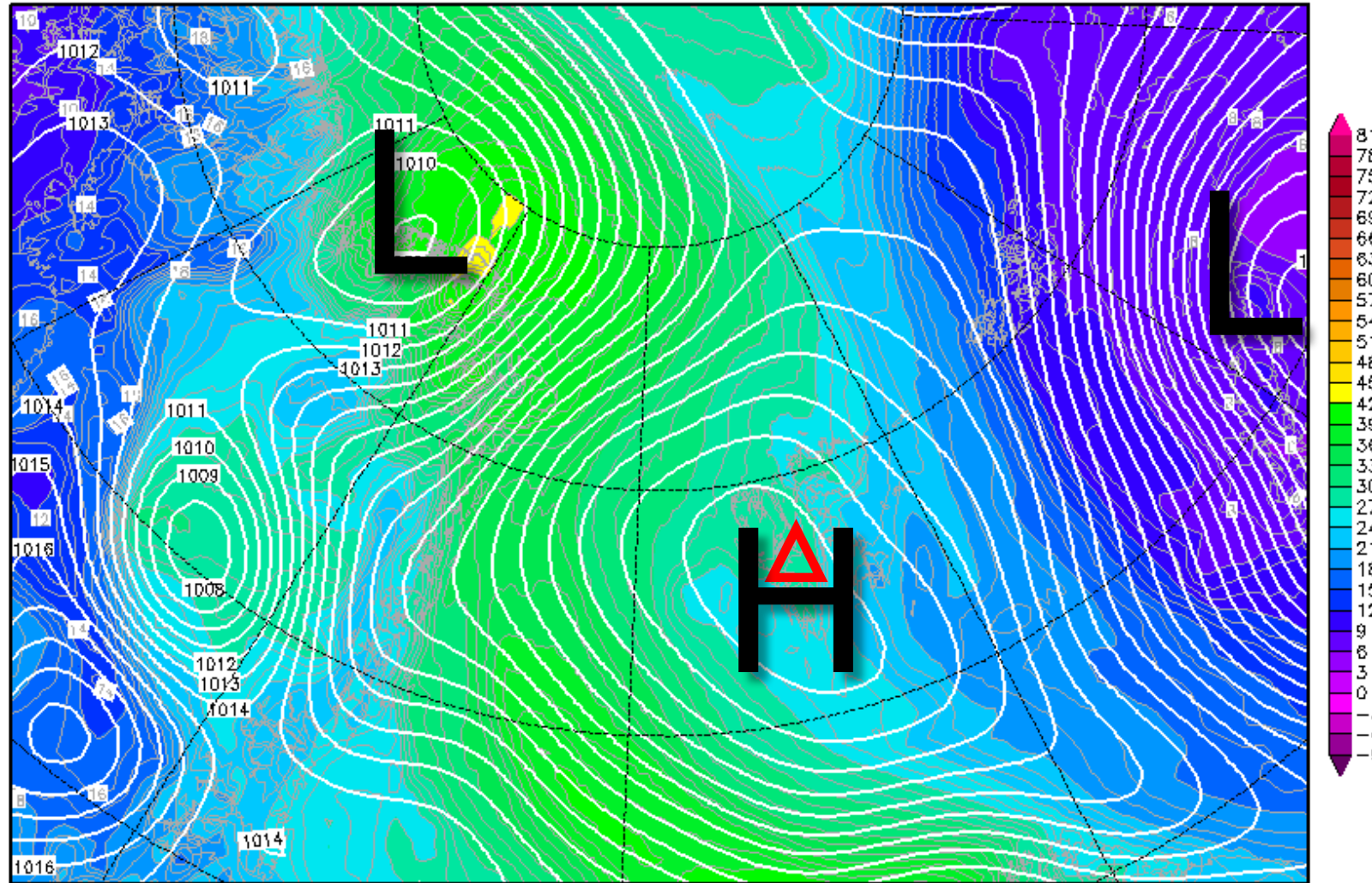


# 850-hPa Theta Equiv. 10 June 2017 @ 12 UTC

Init : Fri,09JUN2017 00Z

Valid: Sat,10JUN2017 12Z

*Bodendruck (hPa) und 850 hPa Aeq.Pot.T. (Grad C)*



Daten: GFS-Modell des amerikanischen Wetterdienstes

(C) Wetterzentrale

[www.wetterzentrale.de](http://www.wetterzentrale.de)

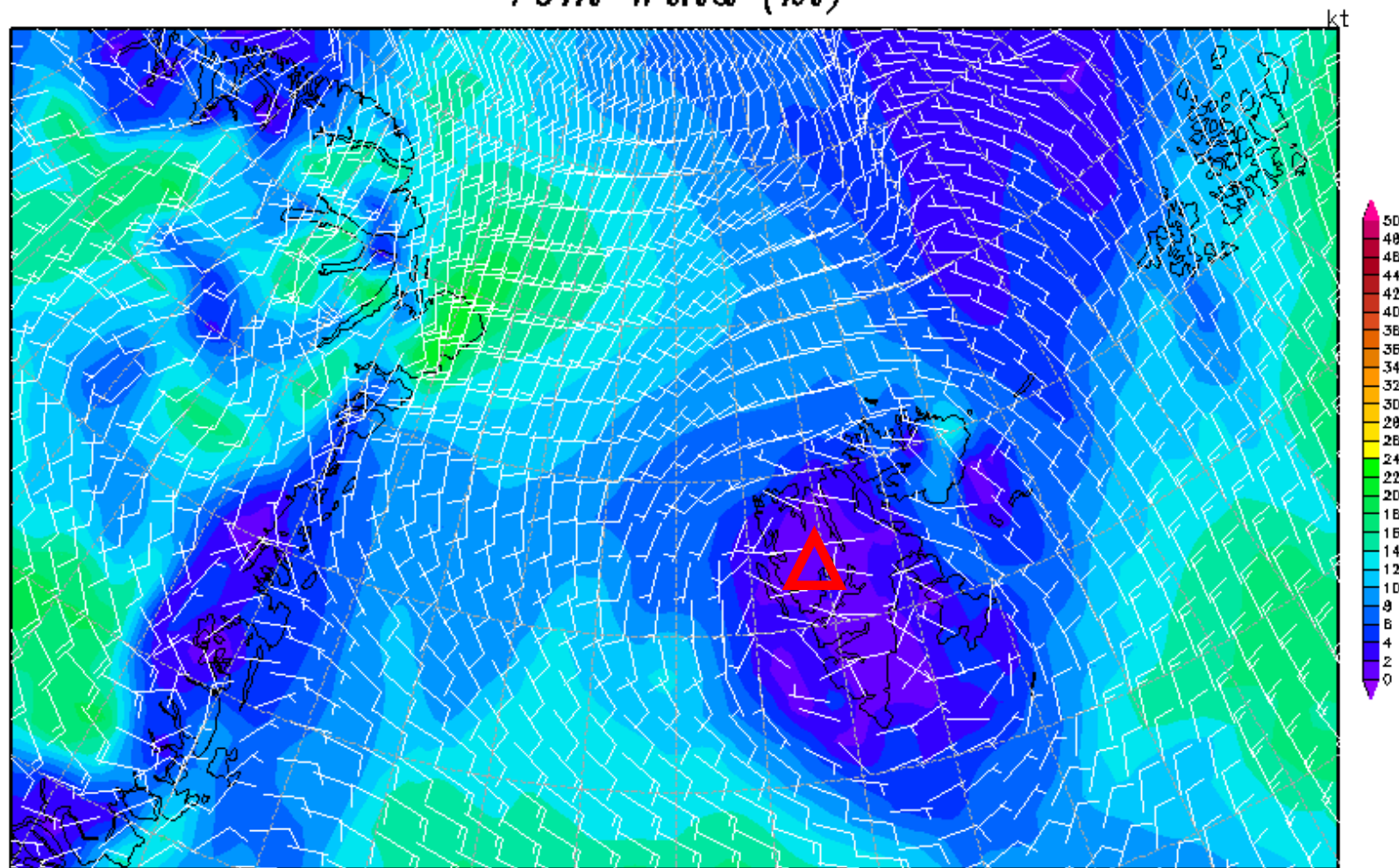


# 10m wind 10 June 2017 @ 12 UTC

Init : Fri,09JUN2017 00Z

Valid: Sat,10JUN2017 12Z

10m Wind (kt)

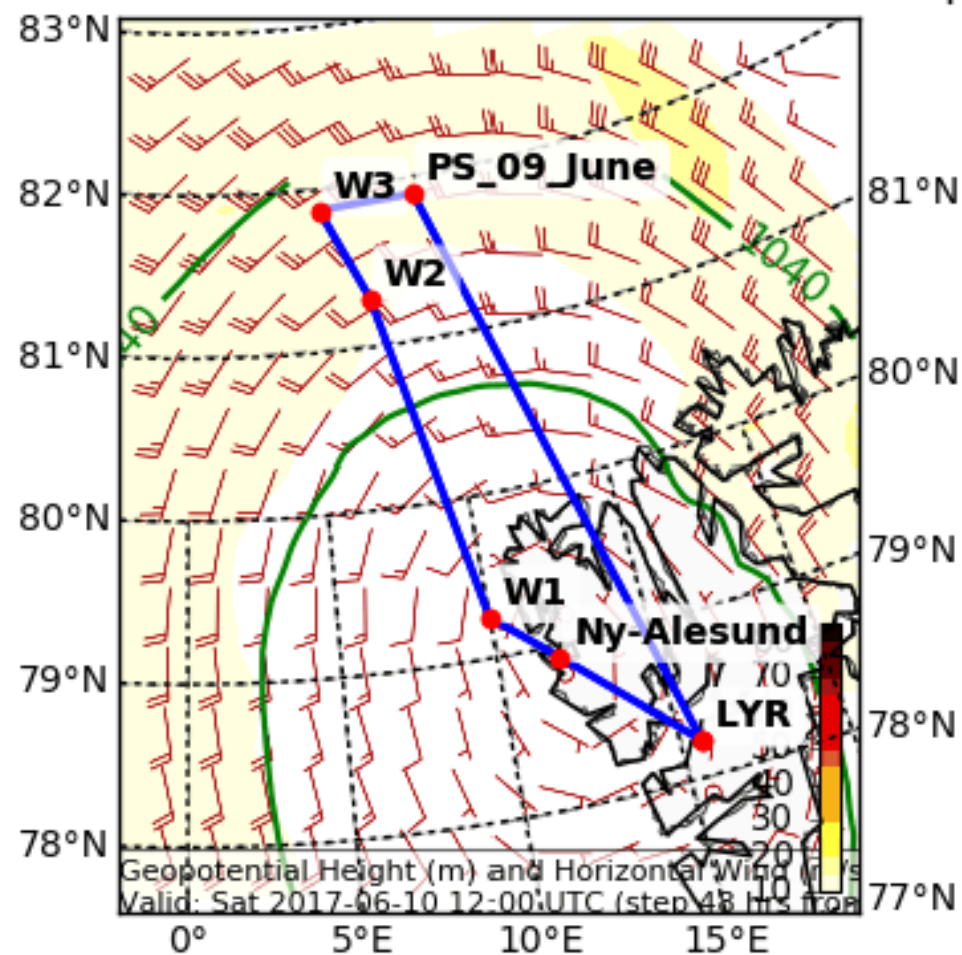


Daten: GFS-Modell des amerikanischen Wetterdienstes  
(C) Wetterzentrale  
[www.wetterzentrale.de](http://www.wetterzentrale.de)

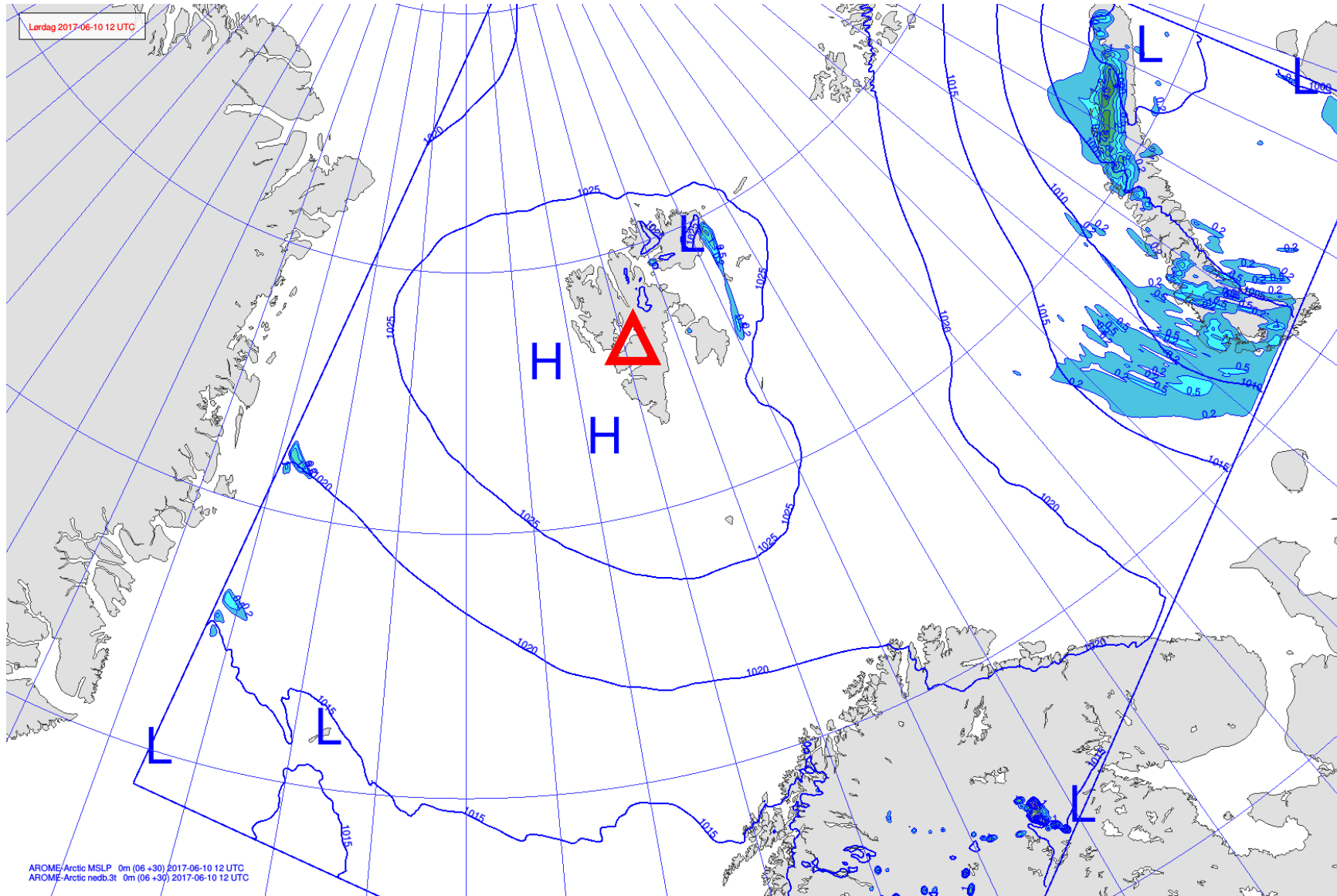
# Wind

## Saturday 12 UTC

Geopotential Height (m) and Horizontal Wind (m/s) (Wind Speed 10-85 m/s)  
Valid: Sat 2017-06-10 12:00 UTC (step 48 hrs from Thu 2017-06-08 12:00 UTC)

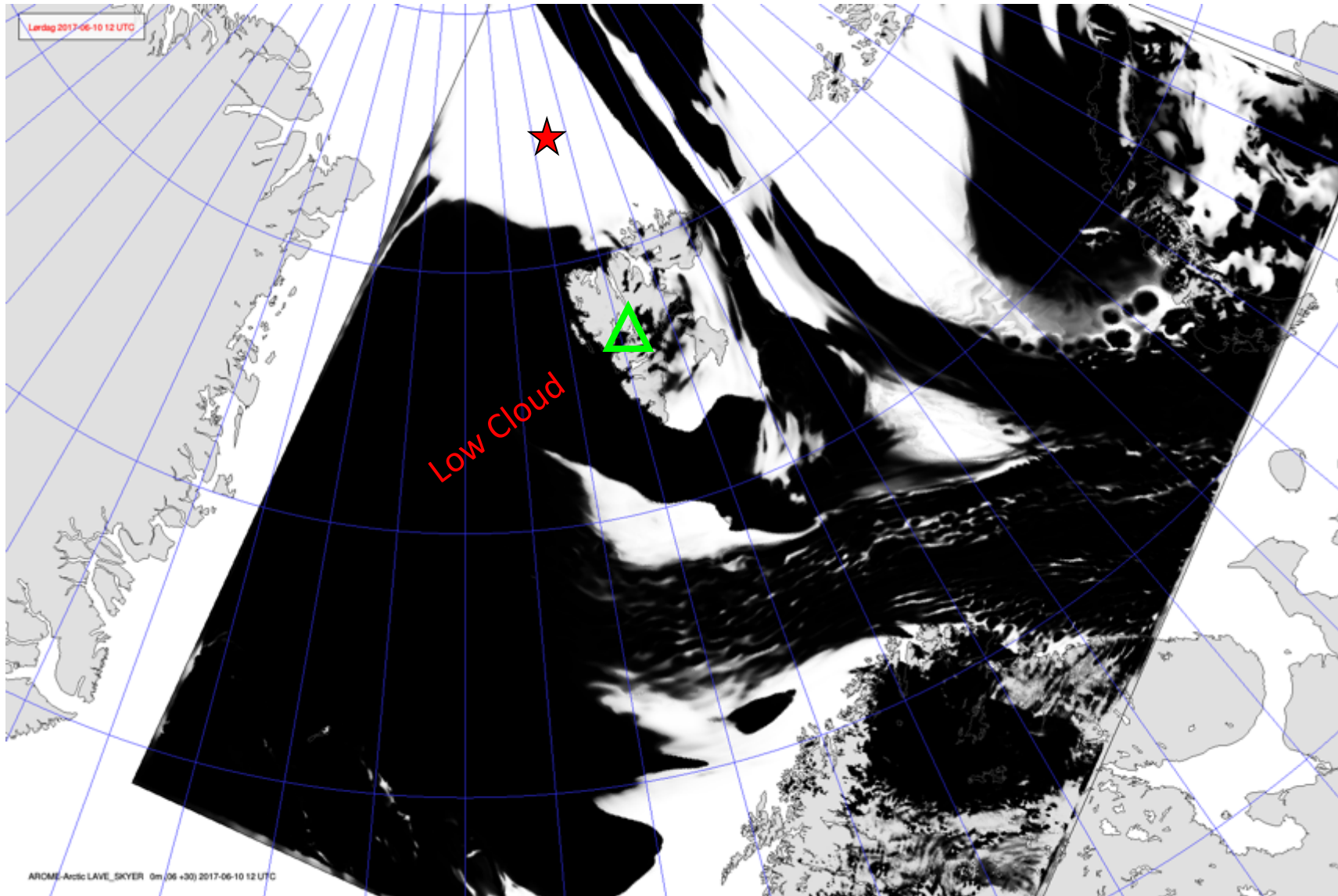


# Precipitation Wind 10 June 2017 @ 12 UTC



# Low-level cloud cover 10 June 2017 @ 12 UTC

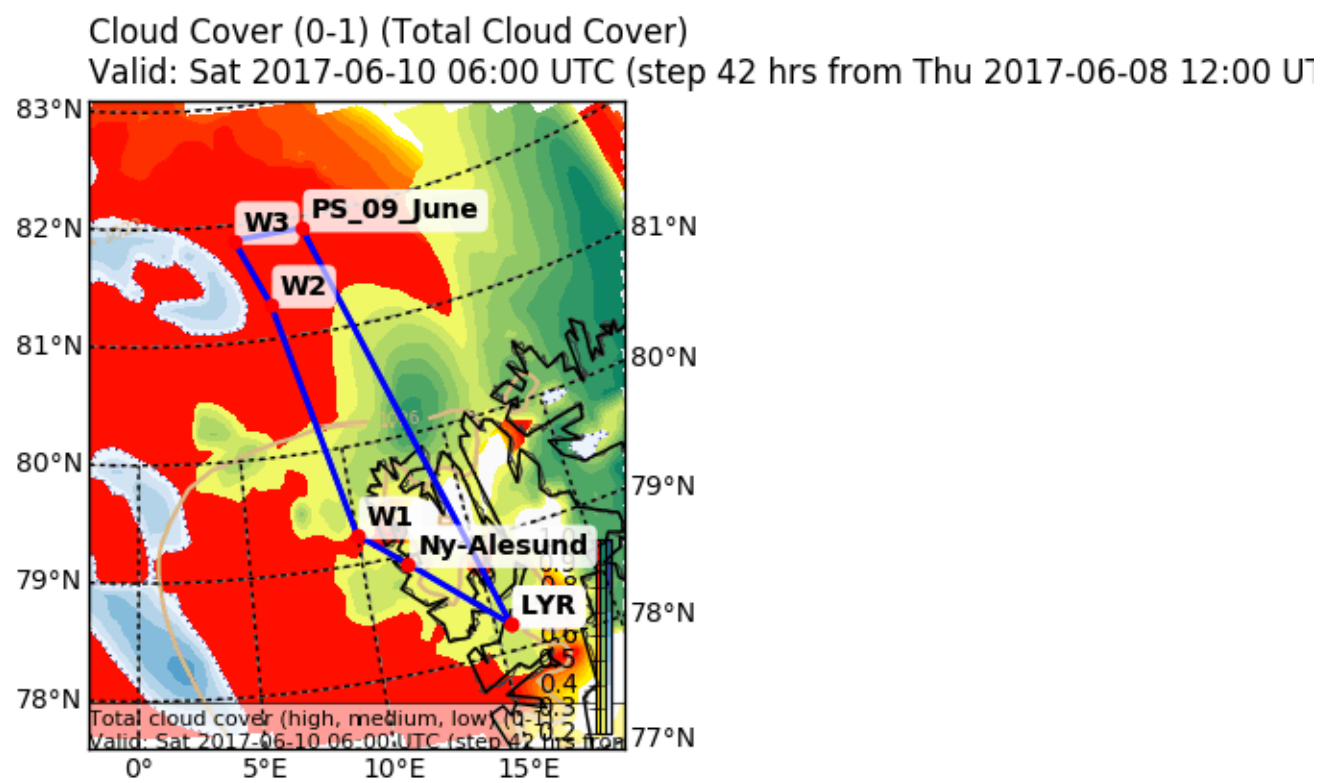
★ RV Polarstern (81.94° N, 10.92° E)



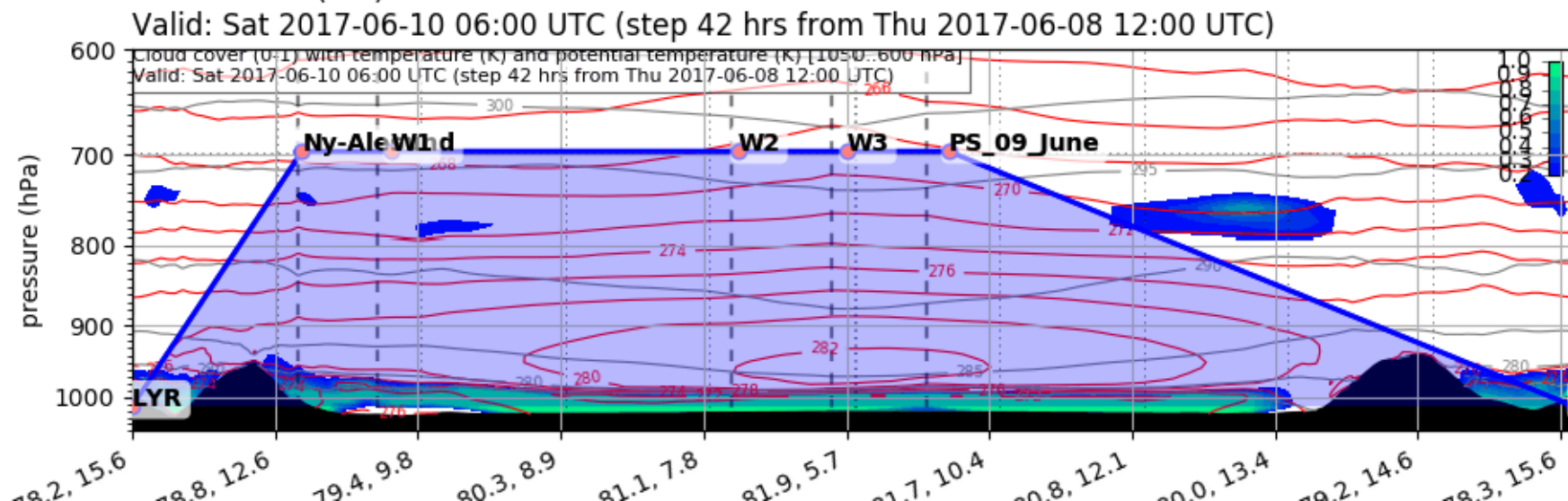


# Forecast

## Saturday 06 UTC

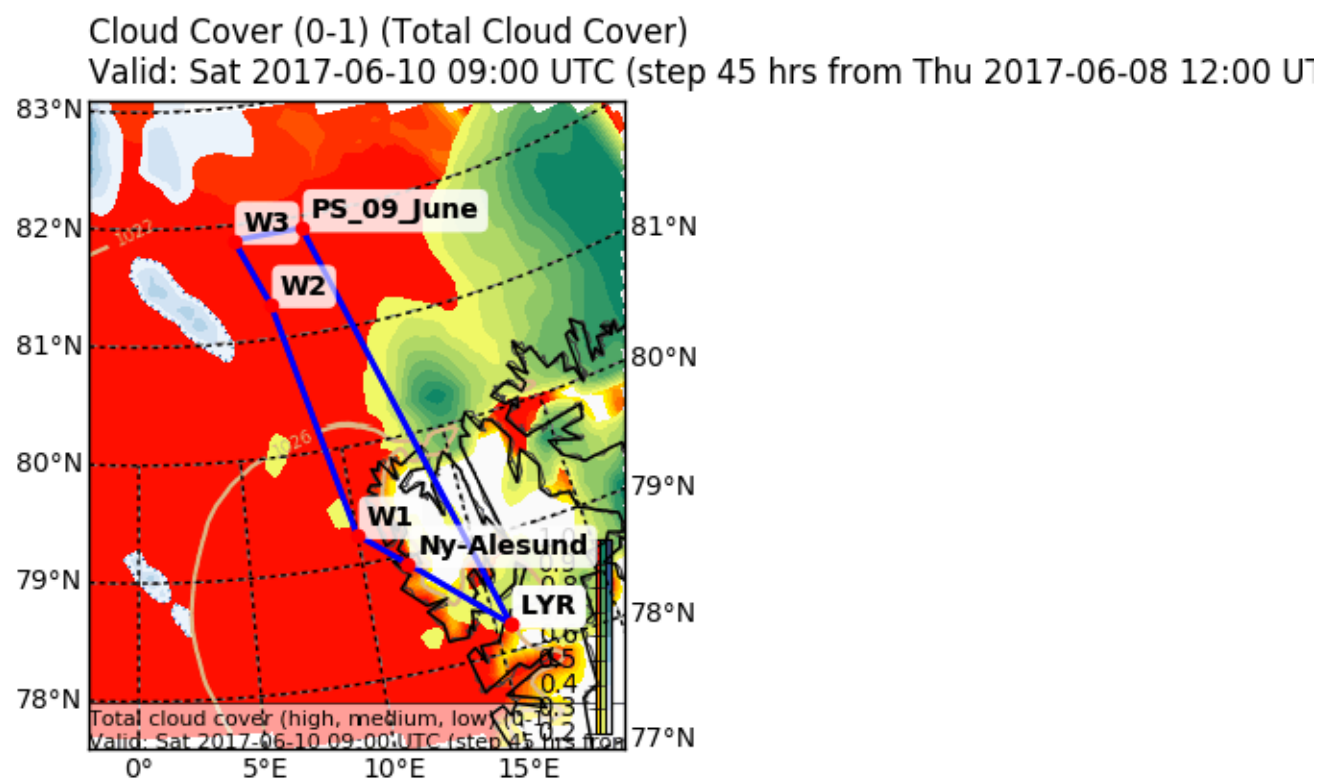


EPSG:77790000

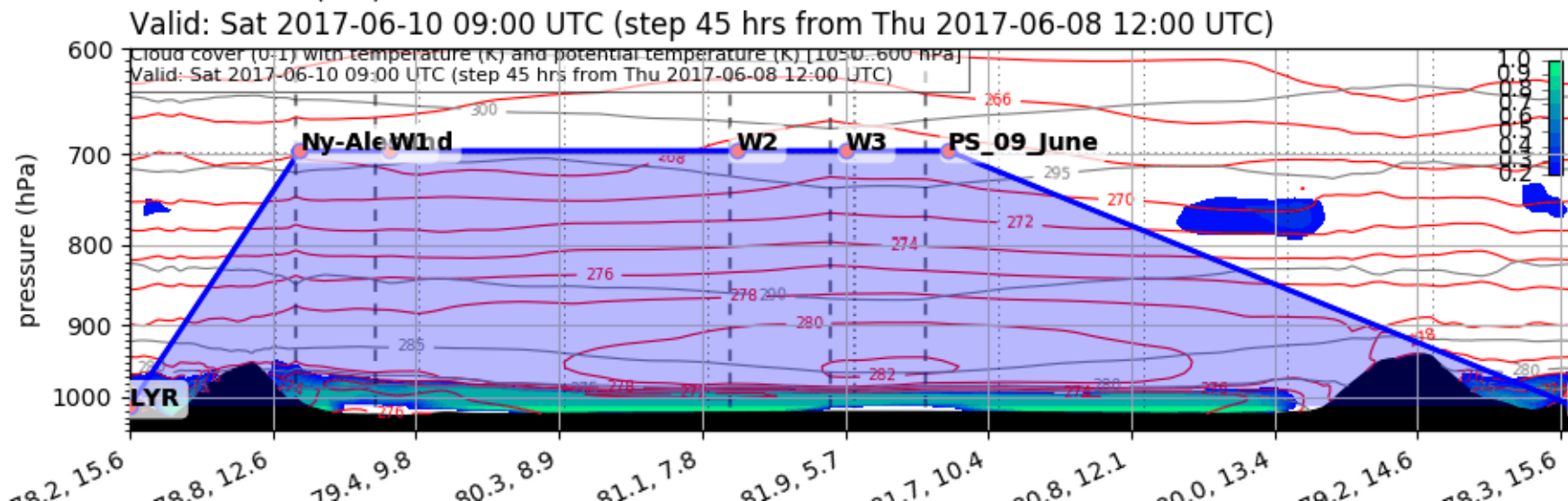


# Forecast

## Saturday 09 UTC

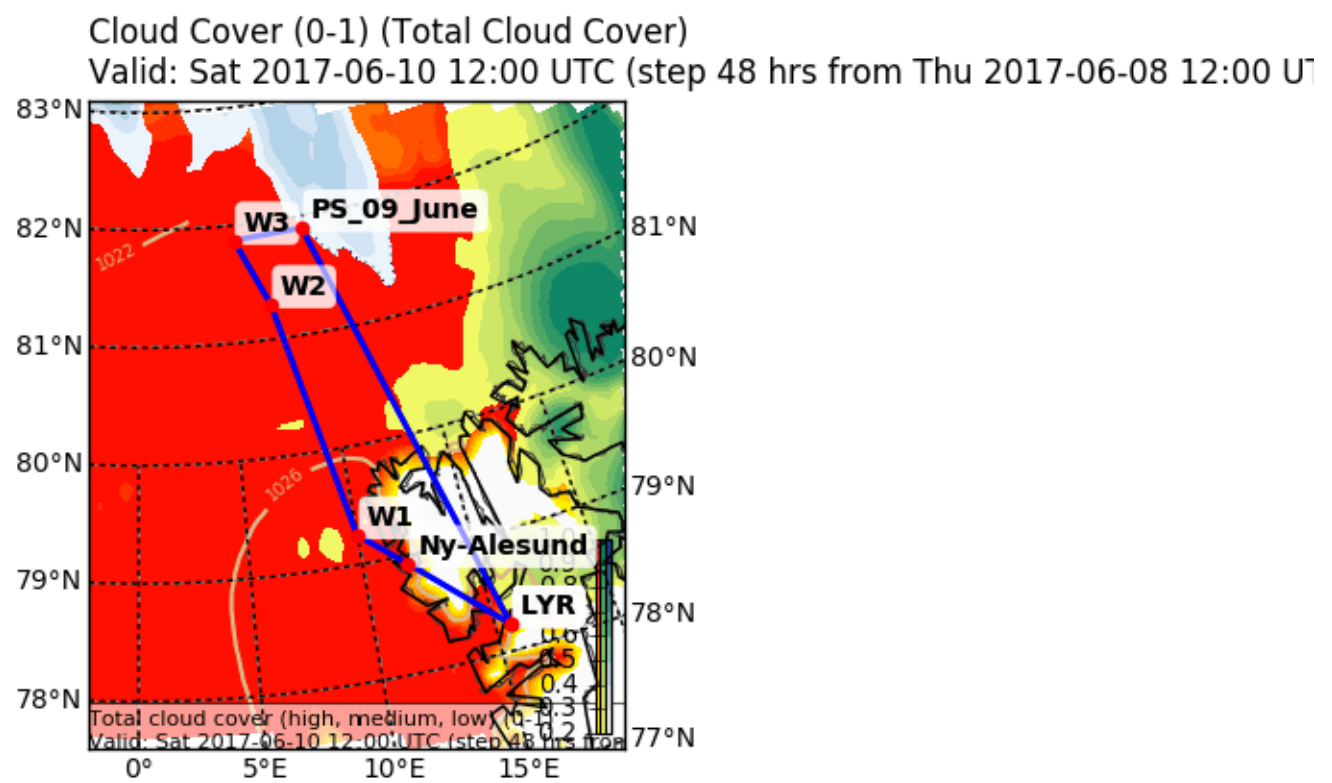


EPSG:77790000

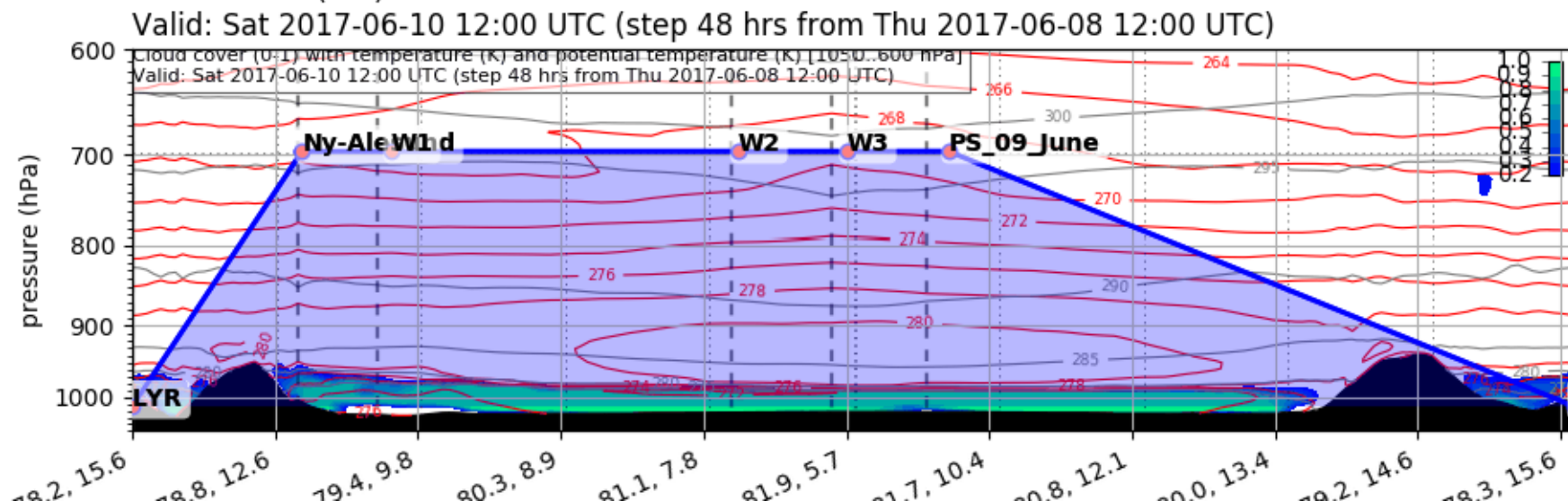


# Forecast

## Saturday 12 UTC

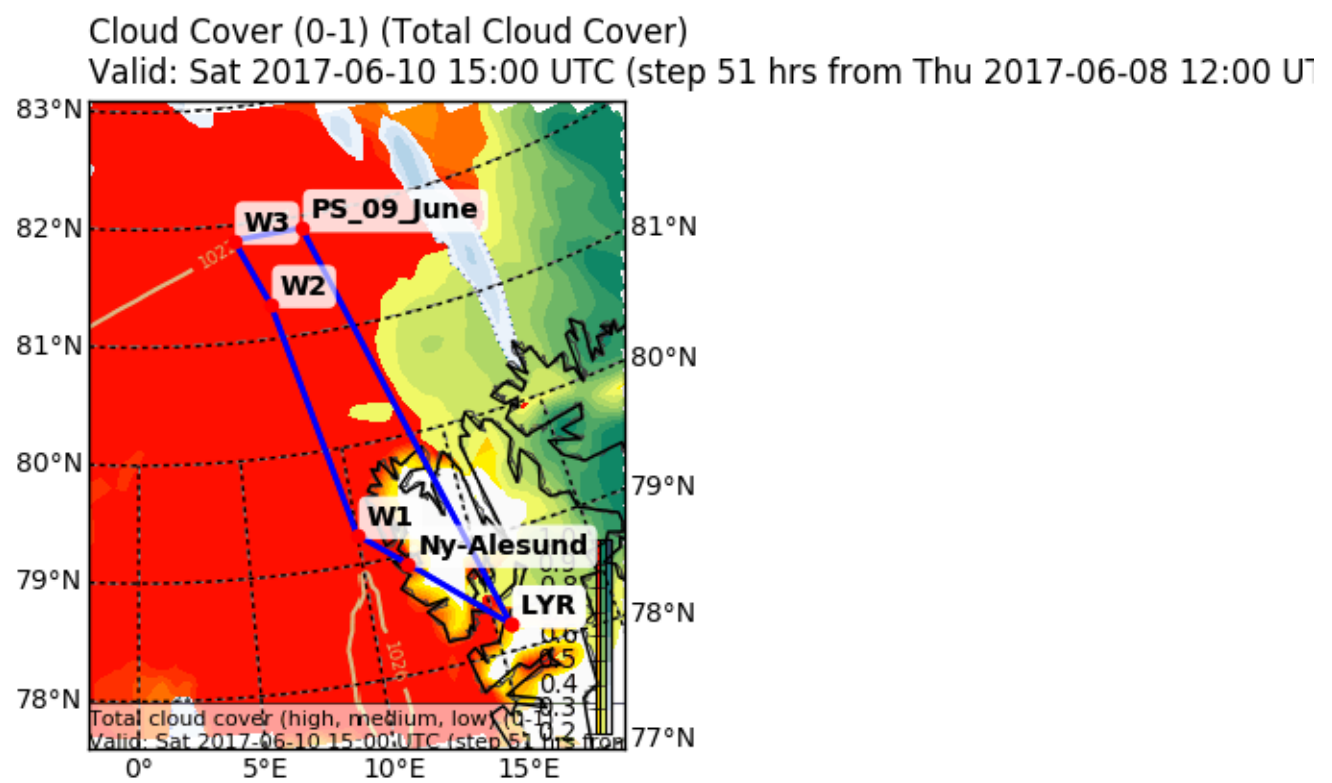


EPSG:77790000

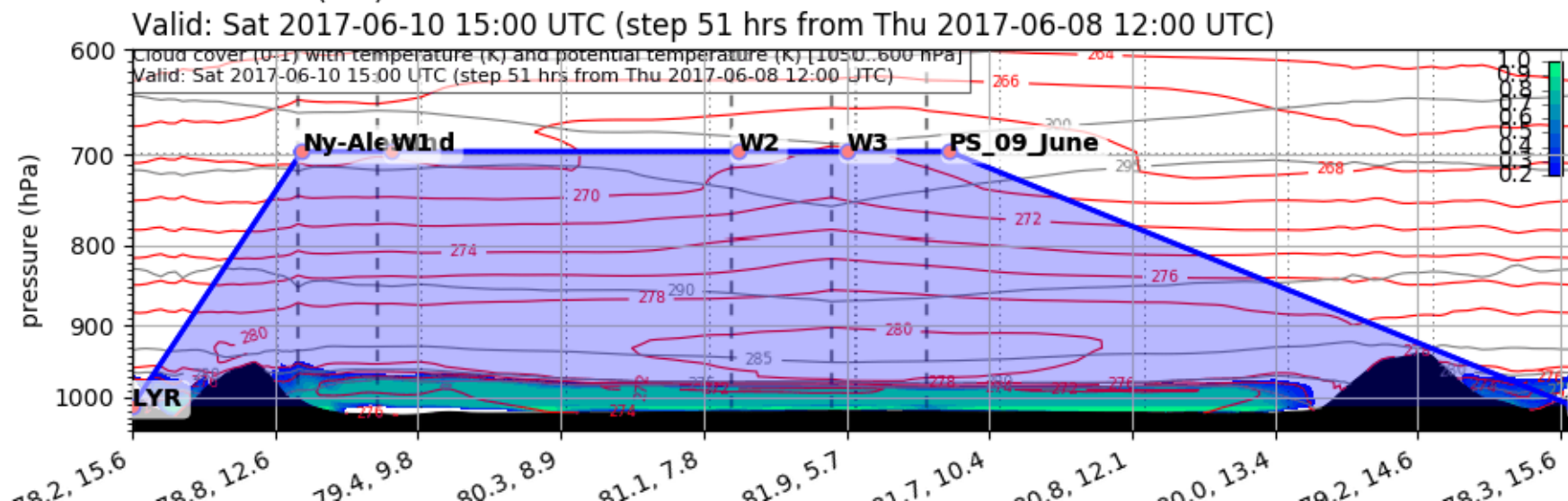


# Forecast

## Saturday 15 UTC



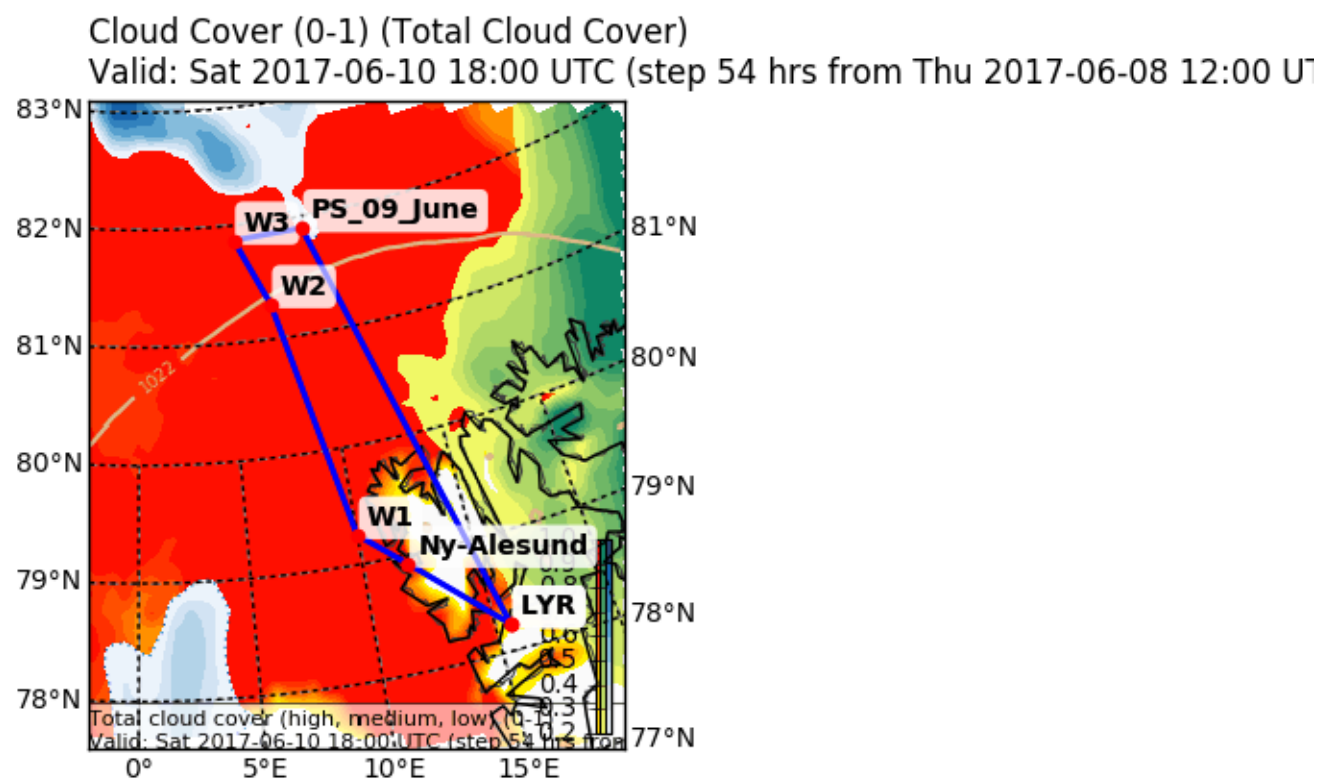
EPSG:77790000



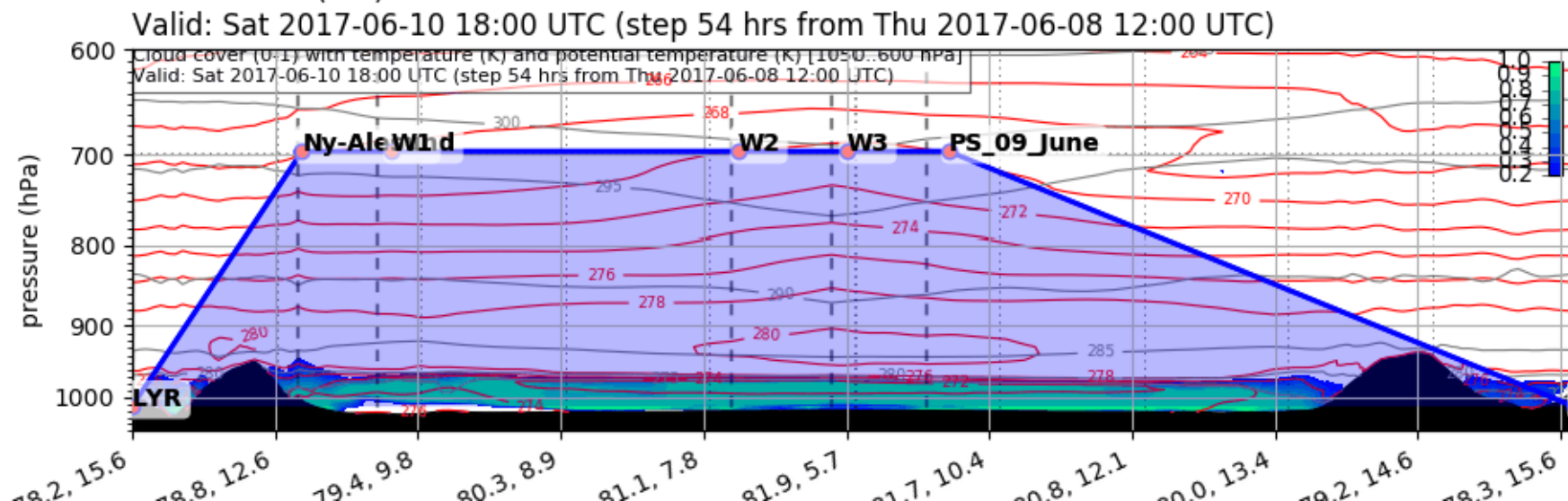


# Forecast

## Saturday 18 UTC

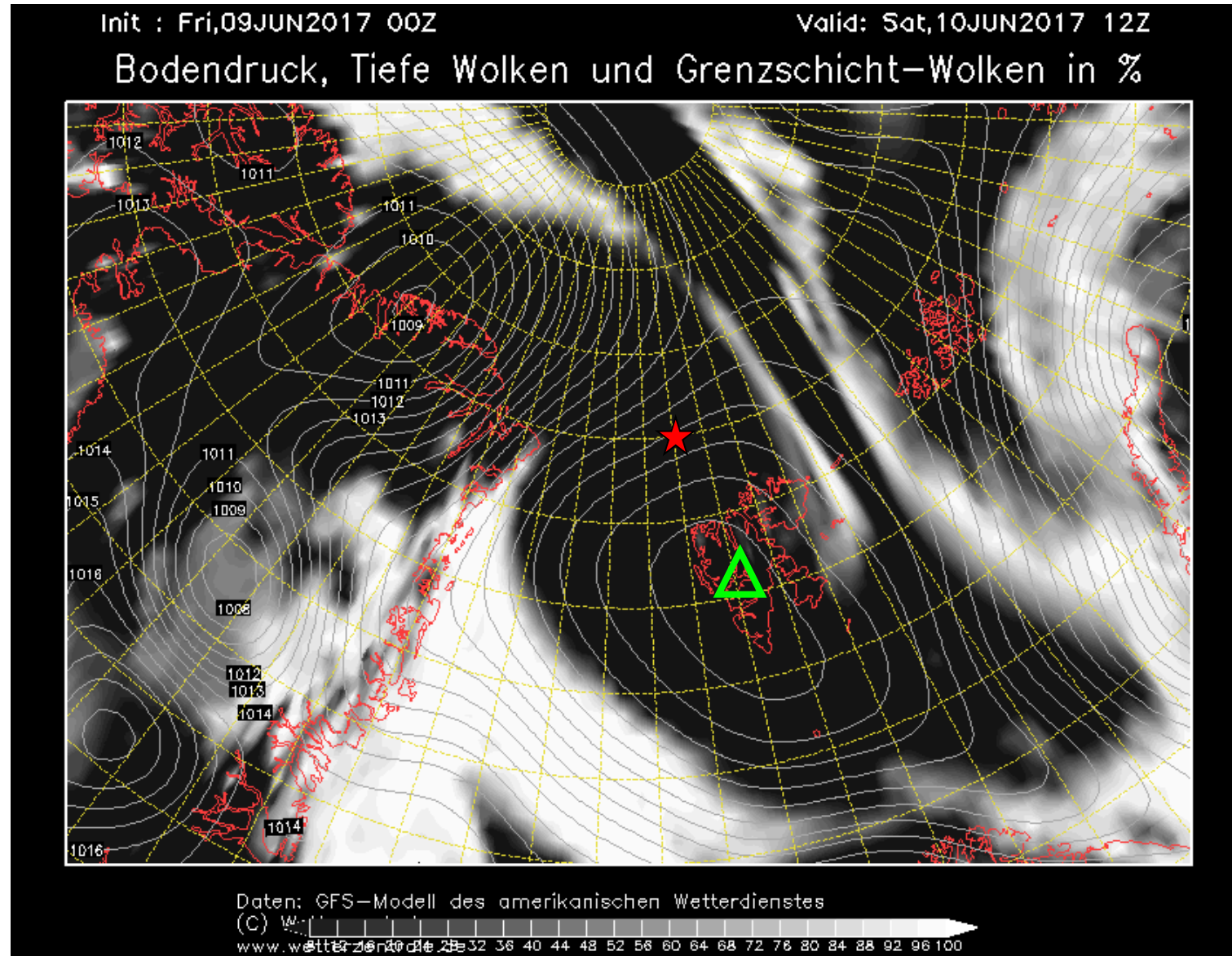


EPSG:77790000



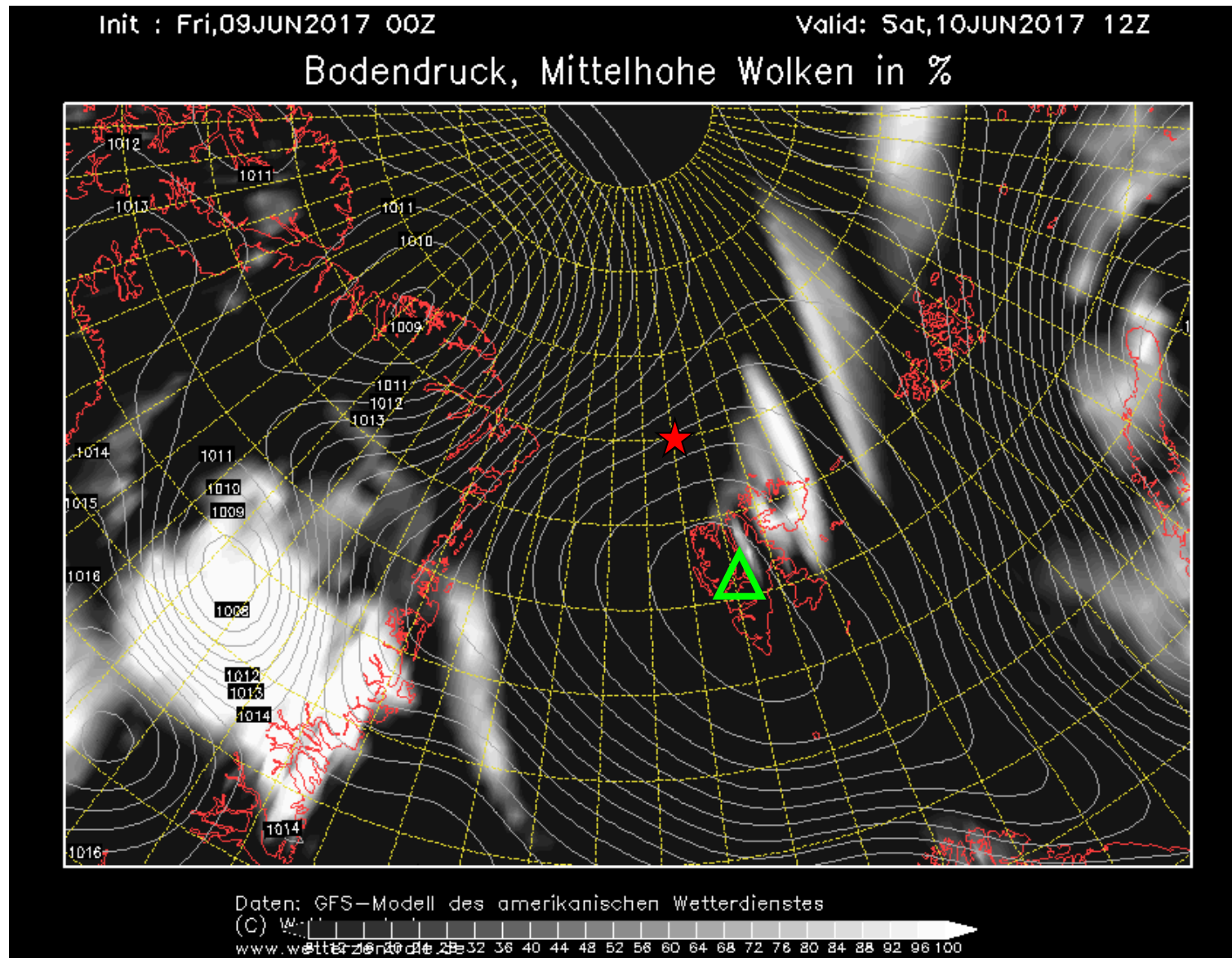
# Low-level cloud cover 10 June 2017 @ 12 UTC

★ RV Polarstern (81.94° N, 10.92° E)



# Mid-level cloud cover 10 June 2017 @ 12 UTC

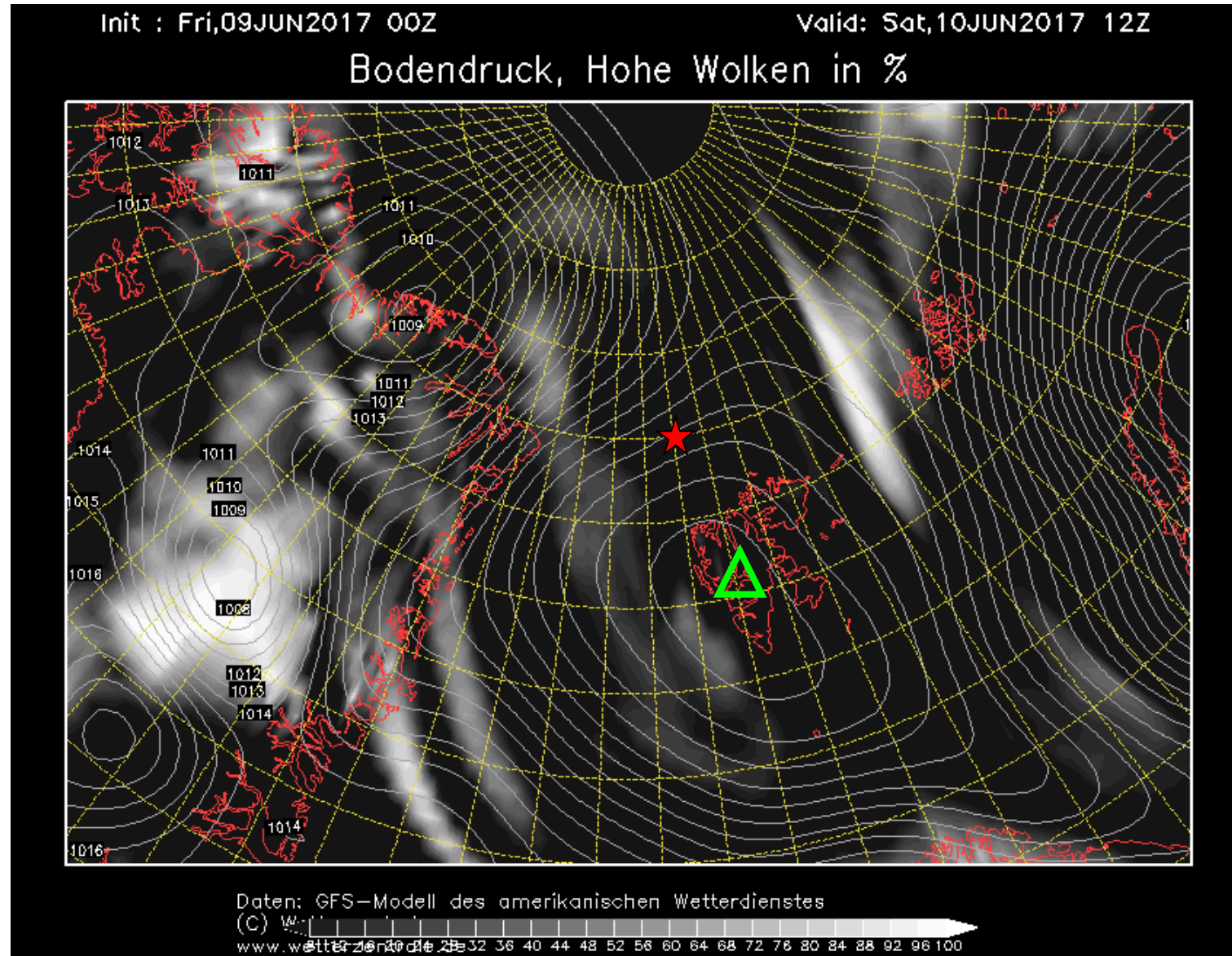
★ RV Polarstern (81.94° N, 10.92° E)





# High-level cloud cover 10 June 2017 @ 12 UTC

★ RV Polarstern (81.94° N, 10.92° E)

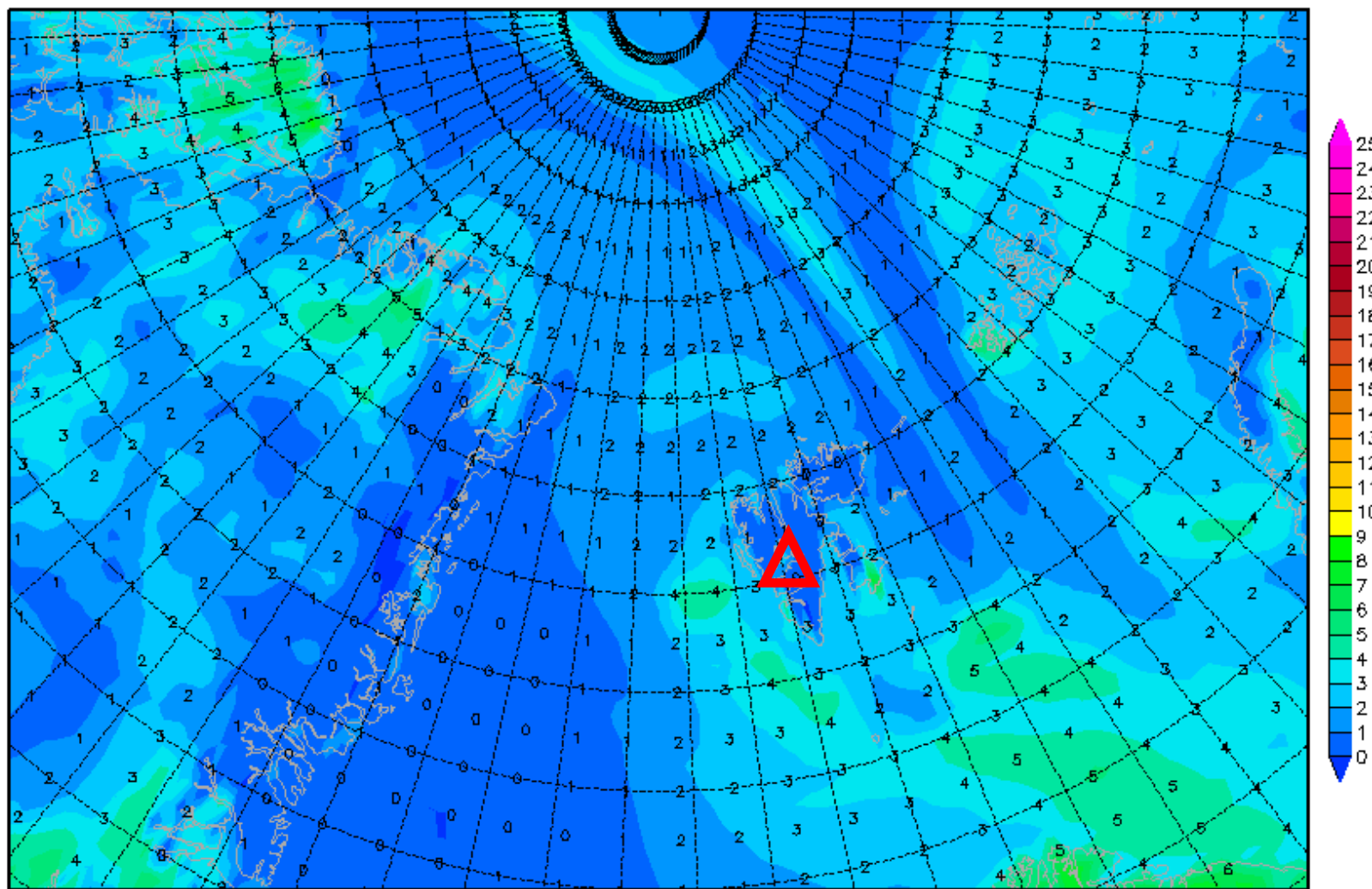


# 2-m dew point diff. 10 June 2017 @ 12 UTC

Init : Fri,09JUN2017 00Z

Valid: Sat,10JUN2017 12Z

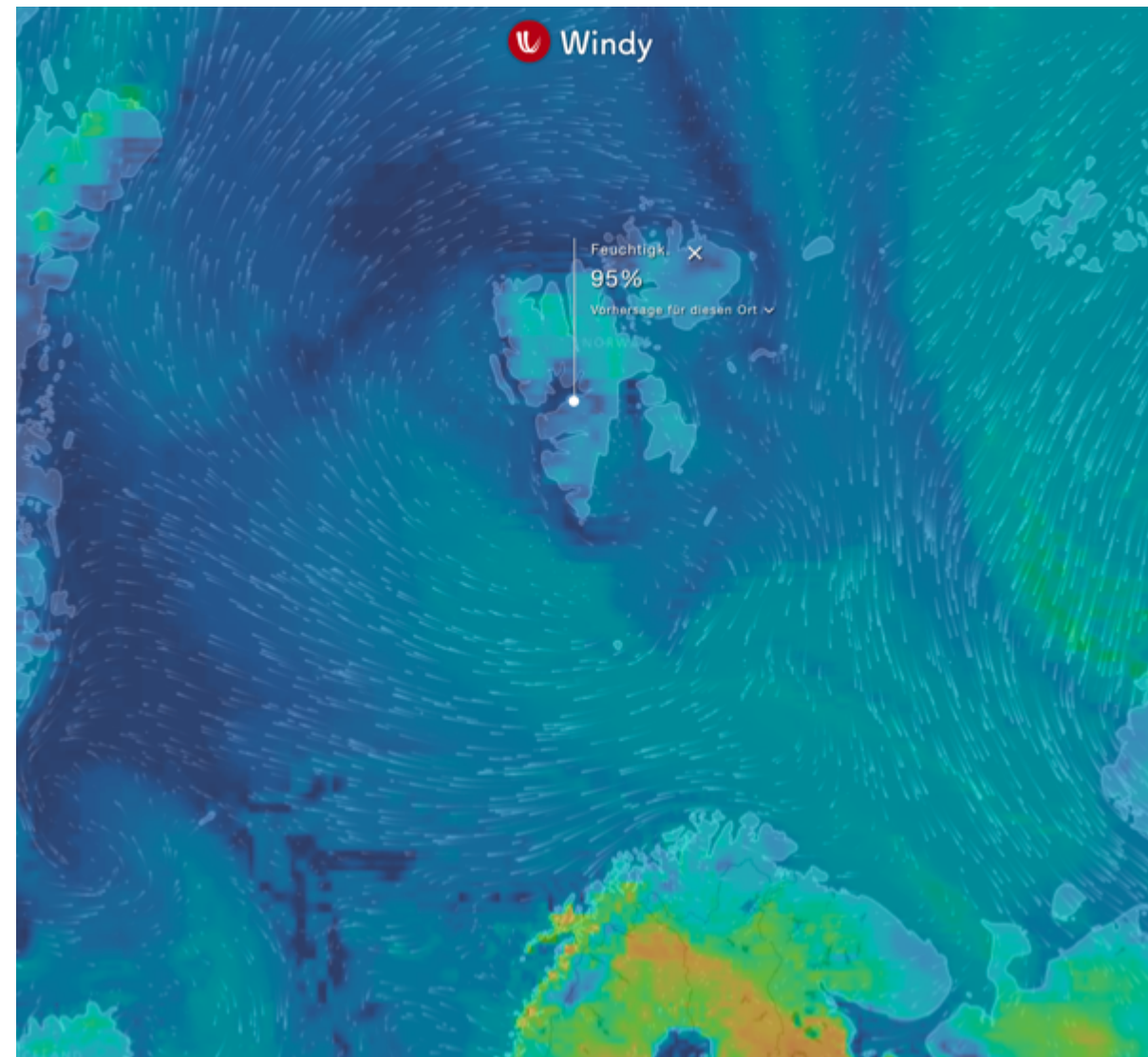
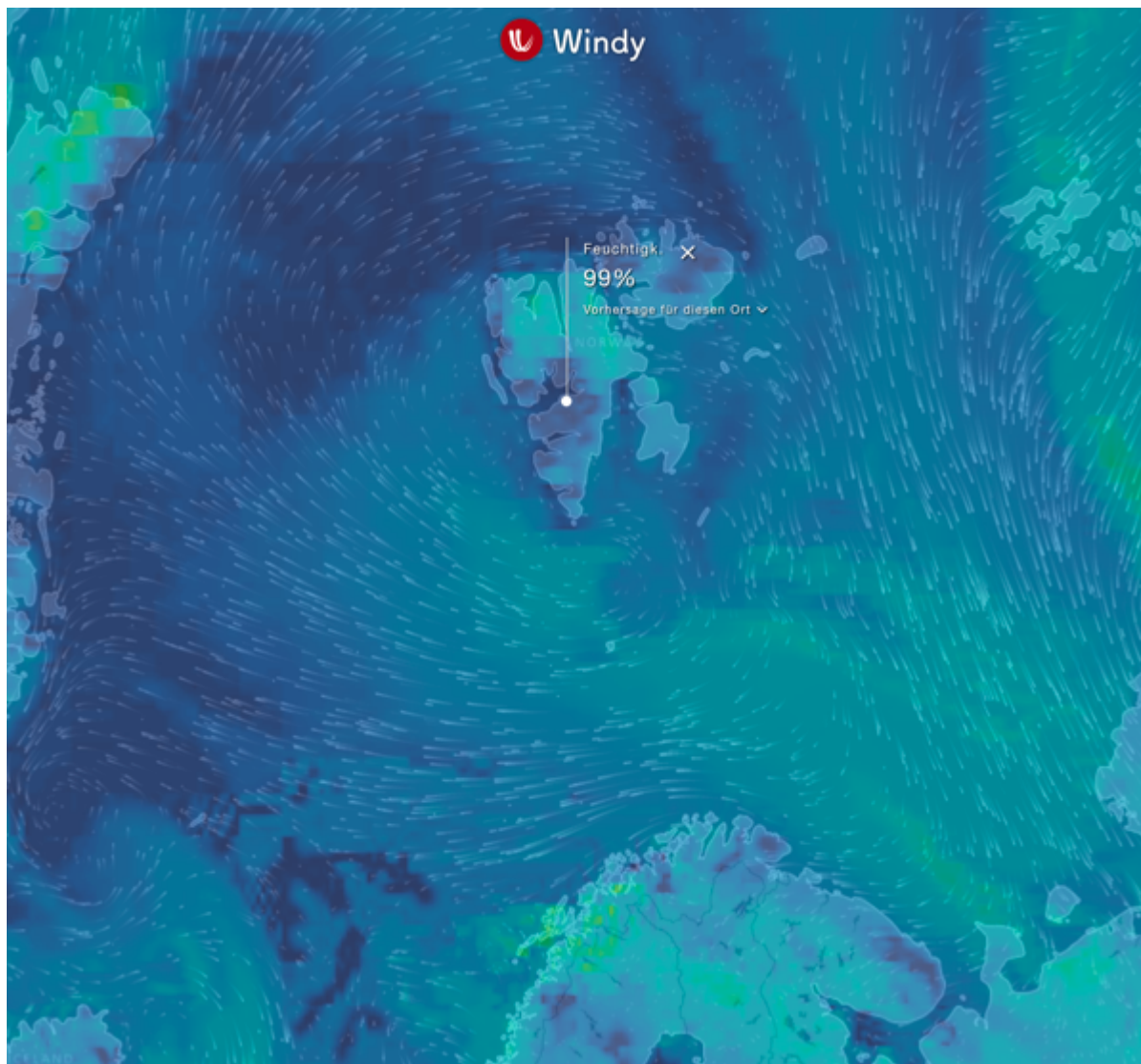
*2m (Temperatur-Taupunkt)*



Daten: GFS  
(C) Wetterzentrale  
[www.wetterzentrale.de](http://www.wetterzentrale.de)



# Rel Humid 10 June 2017 @ 06:00/12:00

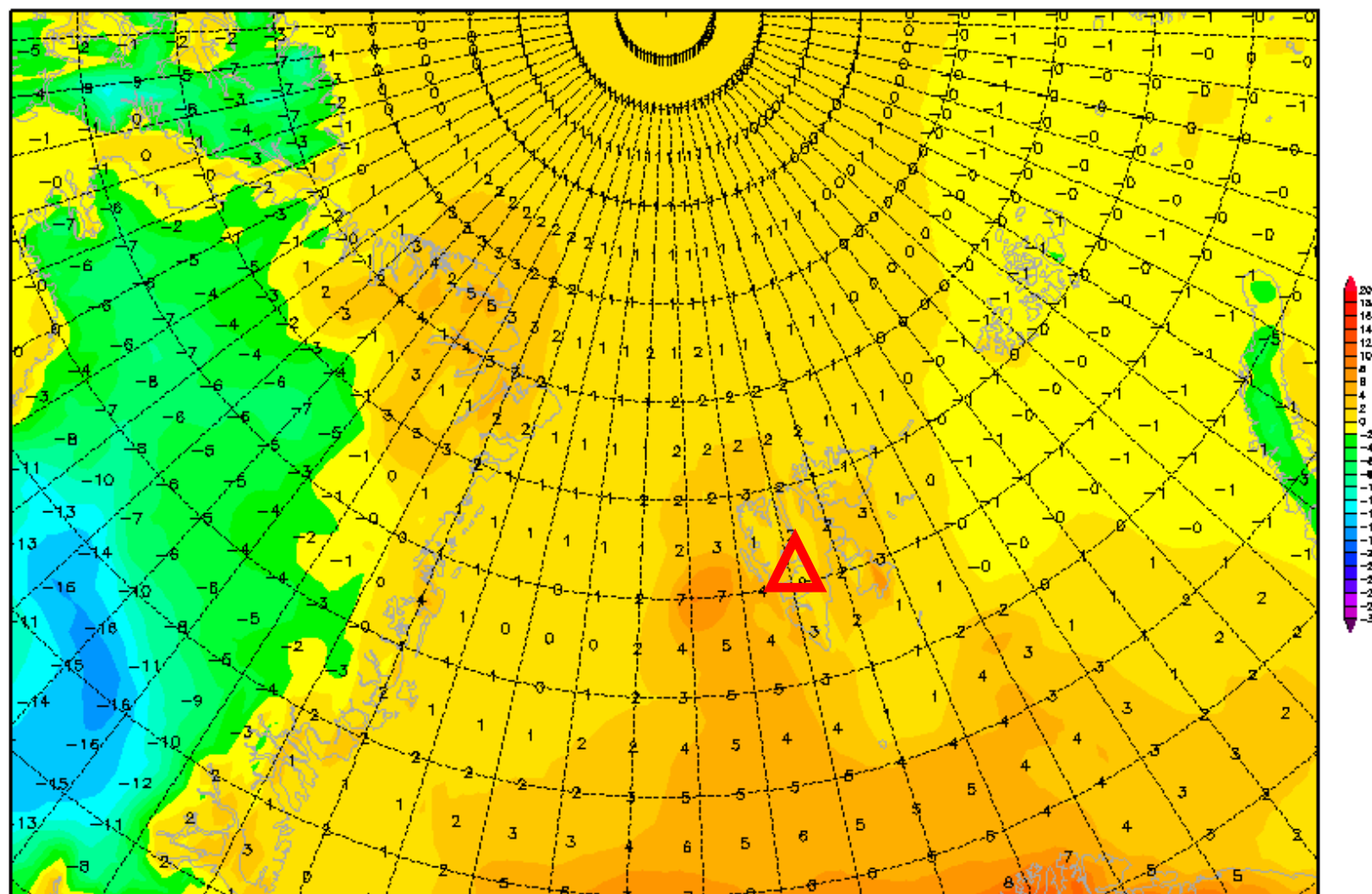


# 2-m temperature 10 June 2017 @ 12 UTC

Init : Fri,09JUN2017 00Z

Valid: Sat,10JUN2017 12Z

*2m Temperatur (°C)*

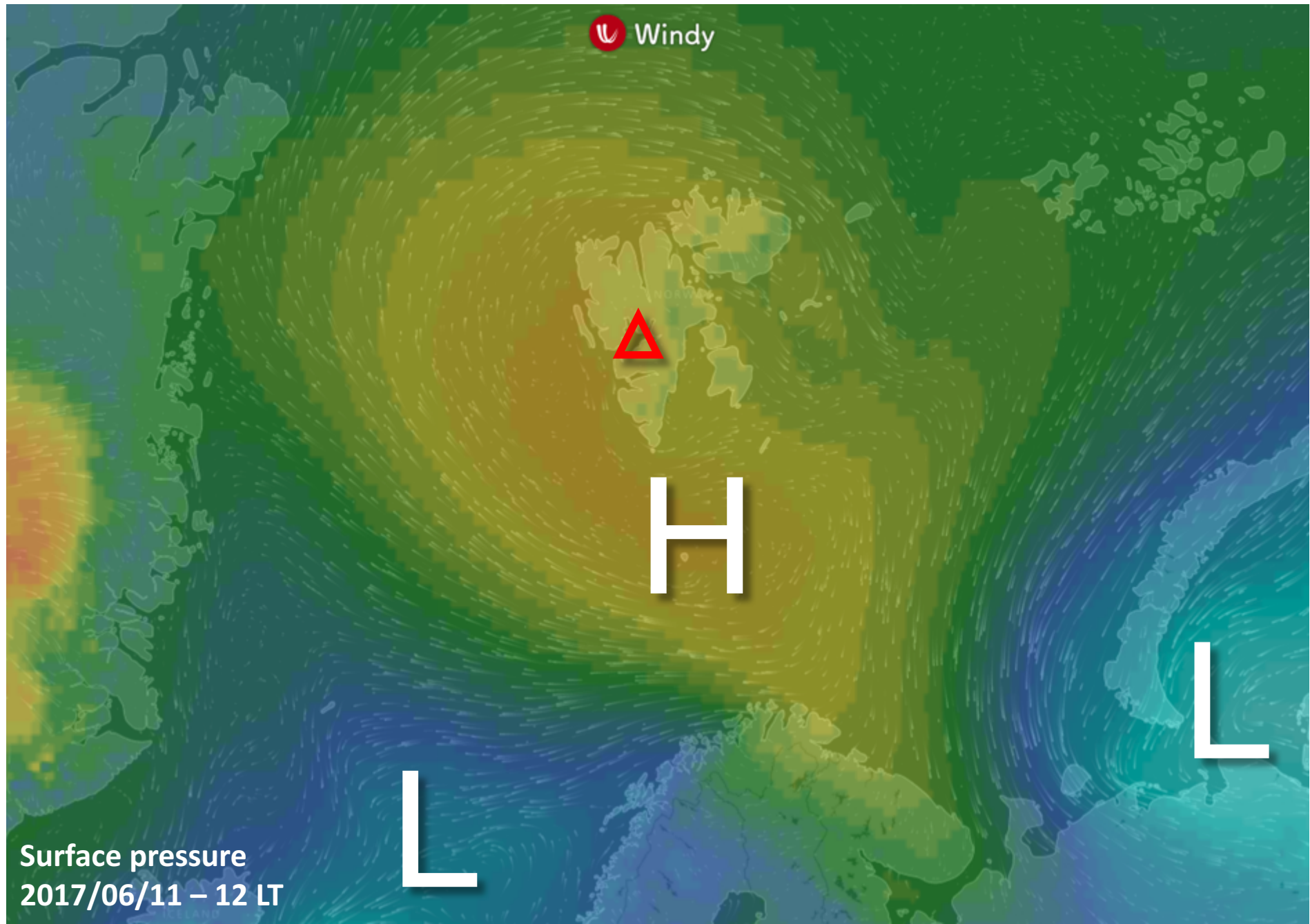


# Outlook

**Sun 11 June – Tue 13 June 2017**



# General Situation Sun 11 June 2017

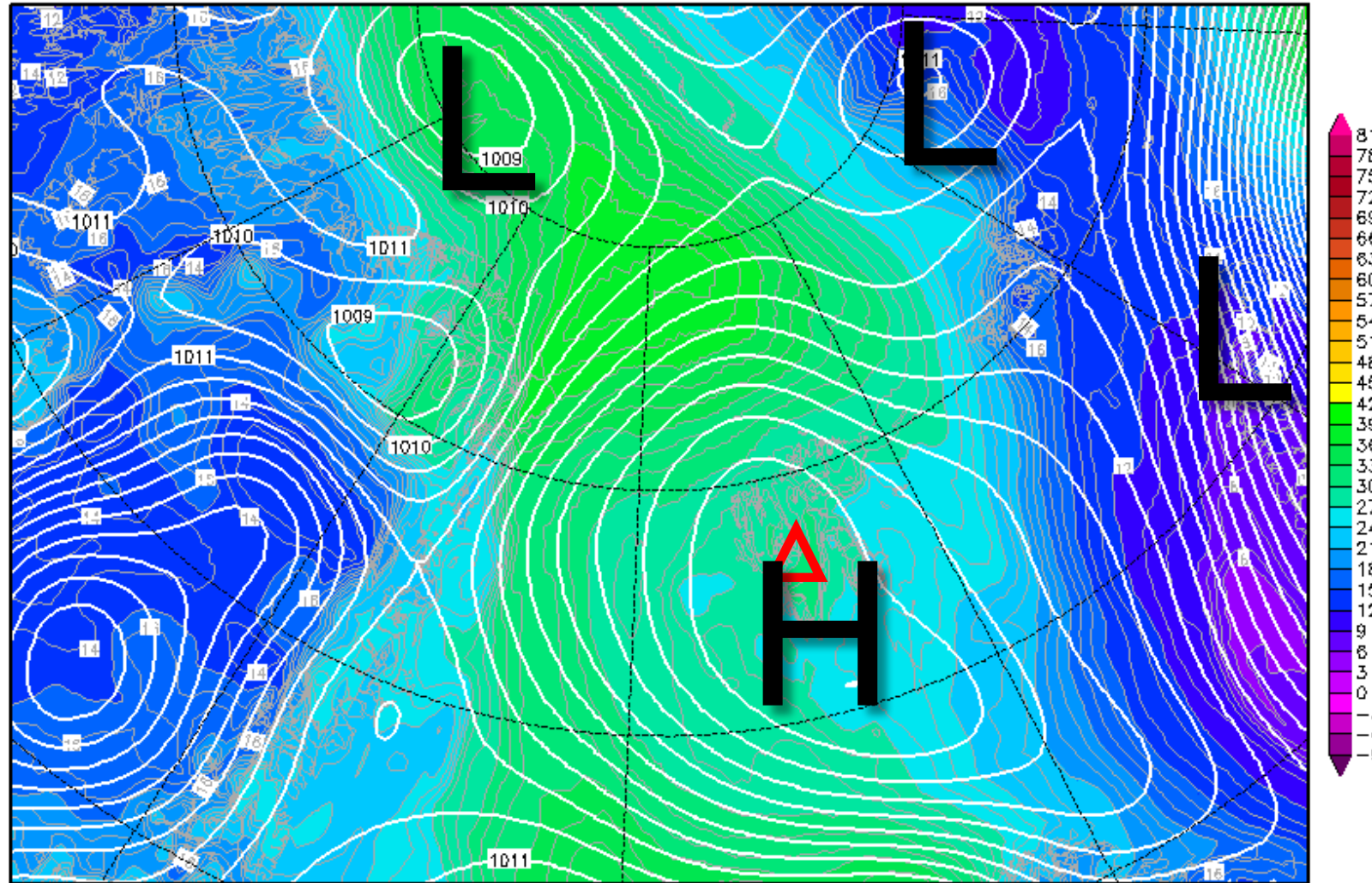


# 850-hPa Theta Equiv. 11 June 2017 @ 12 UTC

Init : Fri,09JUN2017 00Z

Valid: Sun,11JUN2017 12Z

*Bodendruck (hPa) und 850 hPa Aeq.Pot.T. (Grad C)*



Daten: GFS-Modell des amerikanischen Wetterdienstes

(C) Wetterzentrale

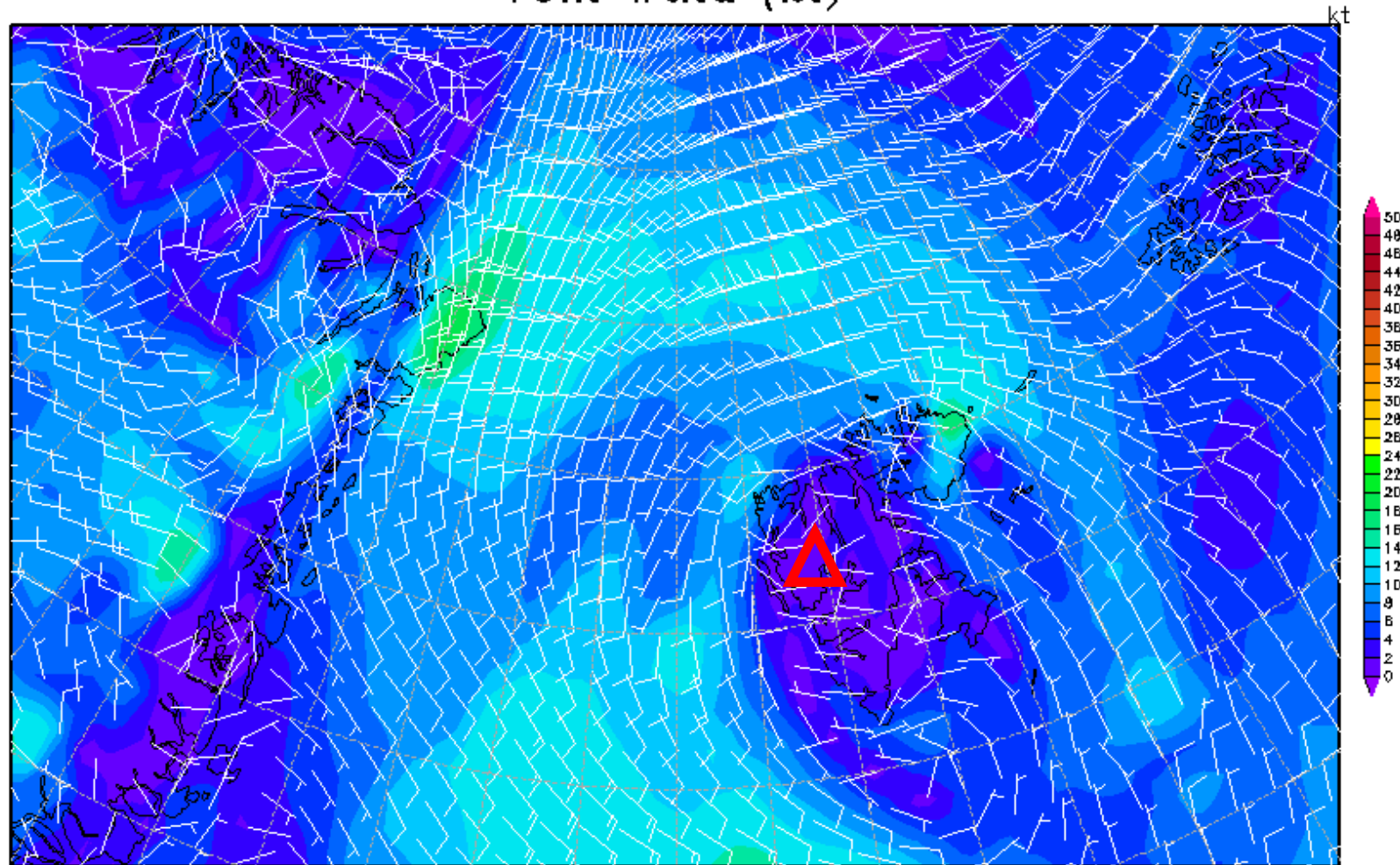
[www.wetterzentrale.de](http://www.wetterzentrale.de)

# 10m wind 11 June 2017 @ 12 UTC

Init : Fri,09JUN2017 00Z

Valid: Sun,11JUN2017 12Z

*10m Wind (kt)*

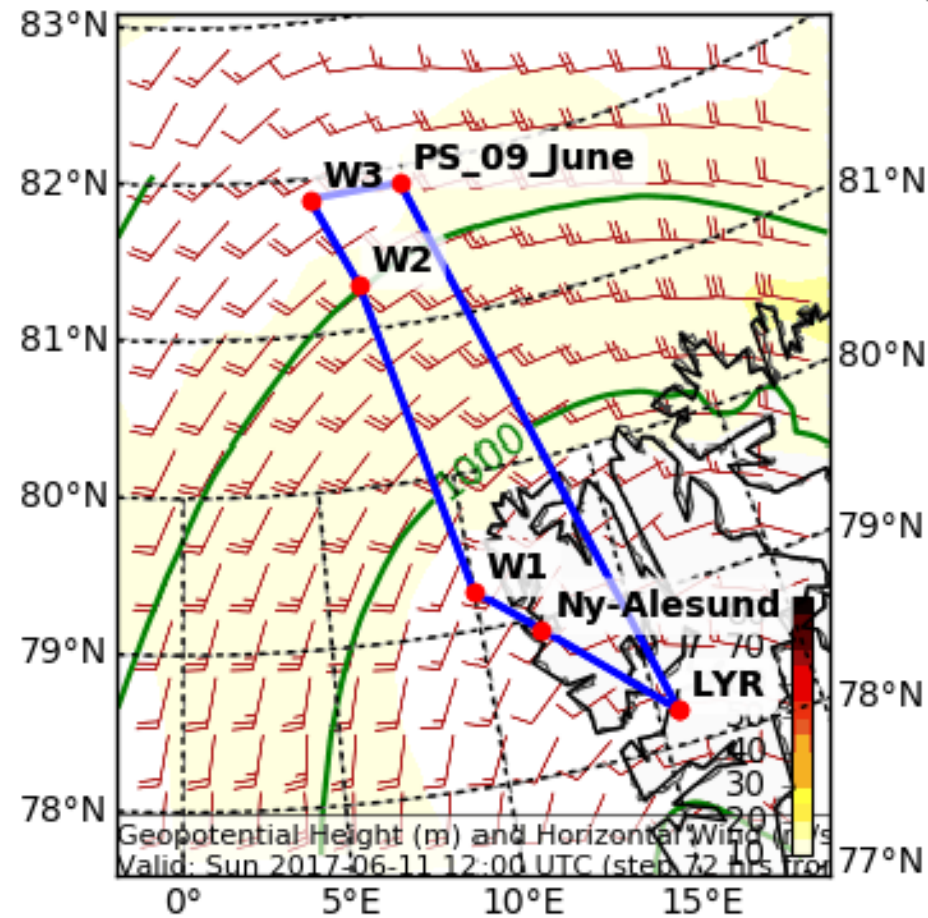




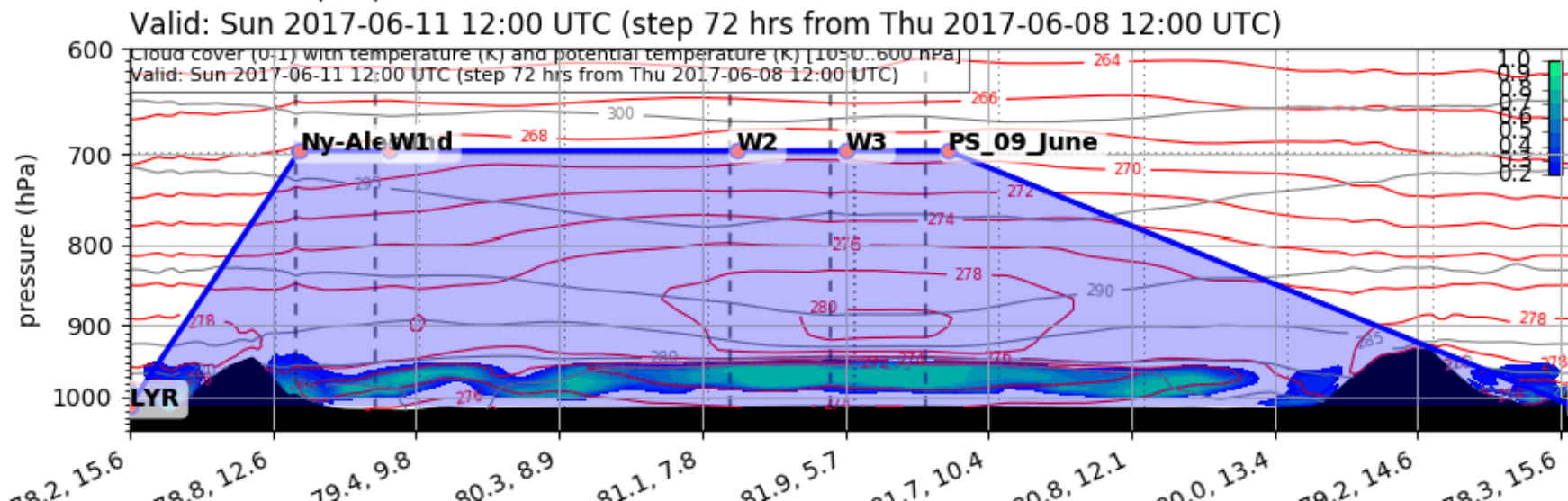
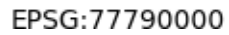
# Wind

## Sunday 12 UTC

Geopotential Height (m) and Horizontal Wind (m/s) (Wind Speed 10-85 m/s)  
Valid: Sun 2017-06-11 12:00 UTC (step 72 hrs from Thu 2017-06-08 12:00 UTC)

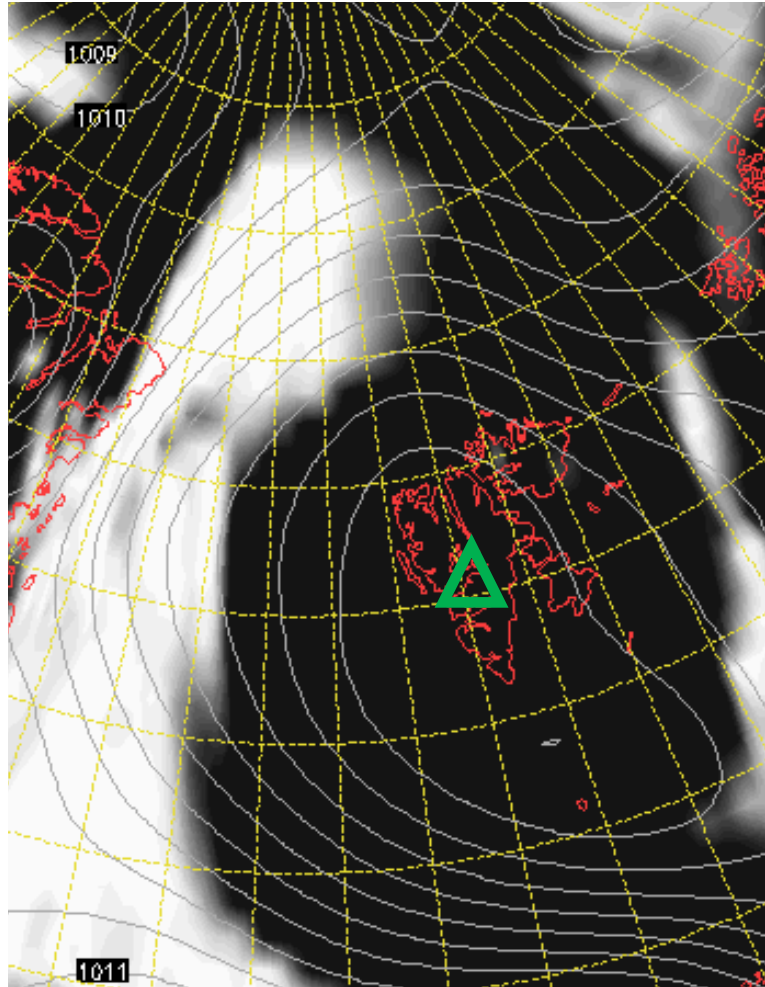


Cloud Cover (0-1) (Total Cloud Cover)  
Valid: Sun 2017-06-11 12:00 UTC (step 72 hrs from Thu 2017-06-08 12:00 U

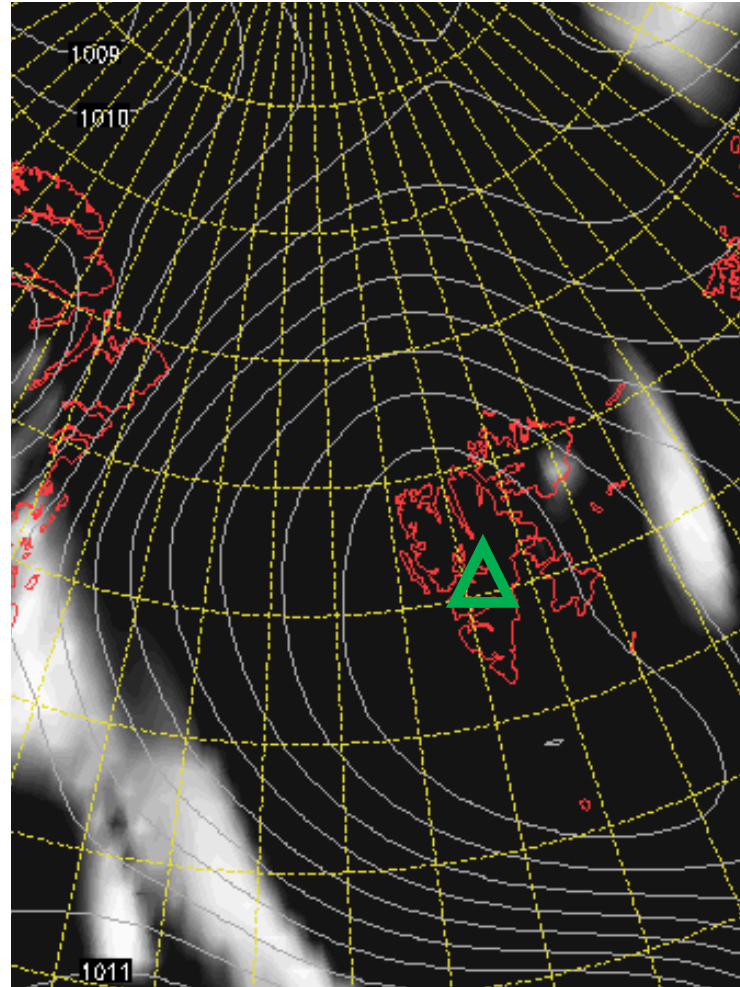


# Cloud Cover 11 June 2017 @ 12 UTC

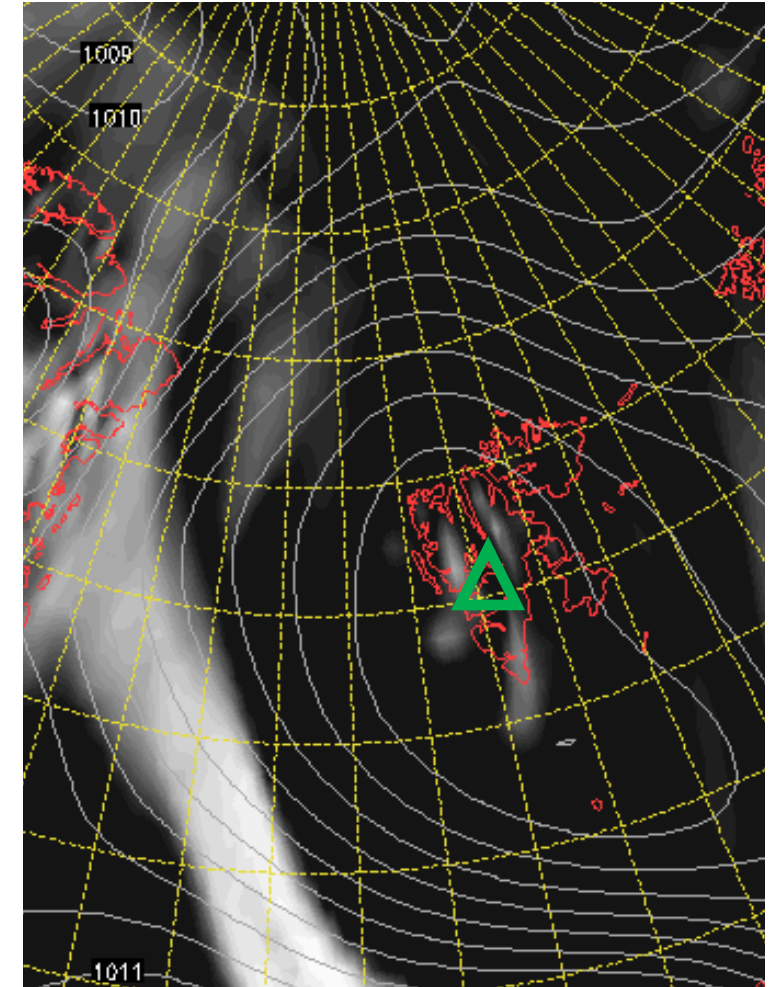
L



M



H

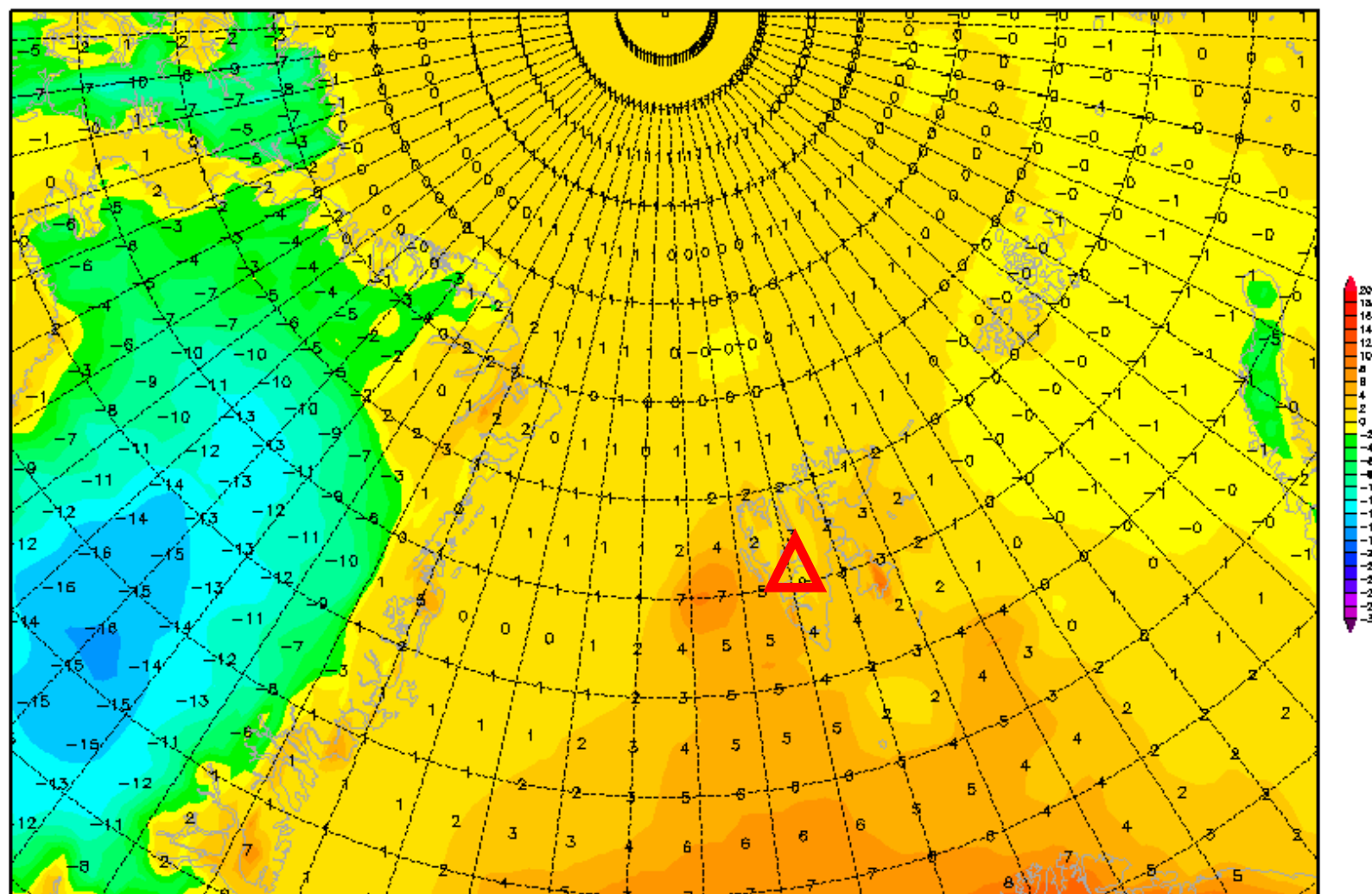


# 2-m temperature 11 June 2017 @ 12 UTC

Init : Fri,09JUN2017 00Z

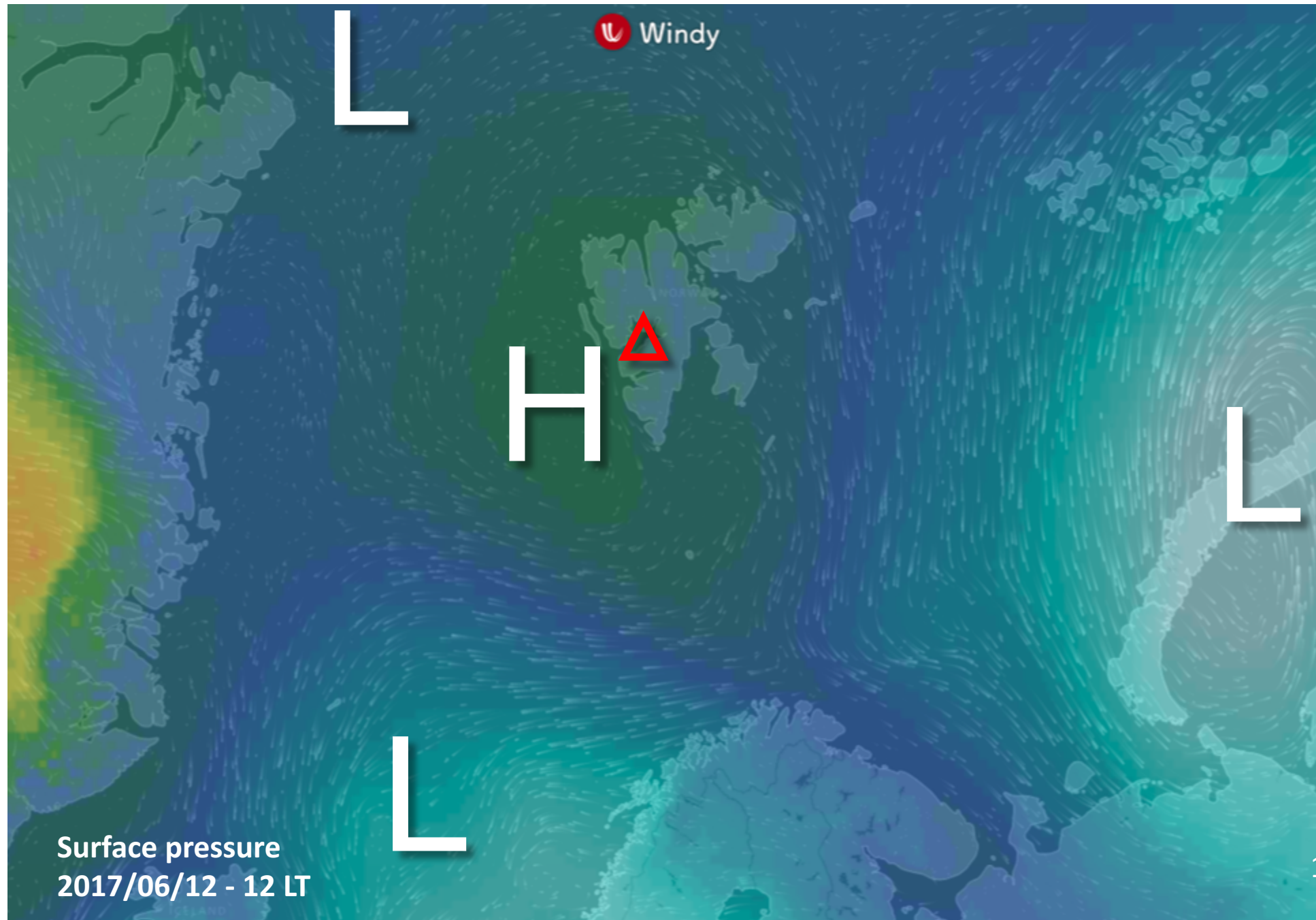
Valid: Sun,11JUN2017 12Z

*2m Temperatur (°C)*





# General Situation Mon 12 June 2017



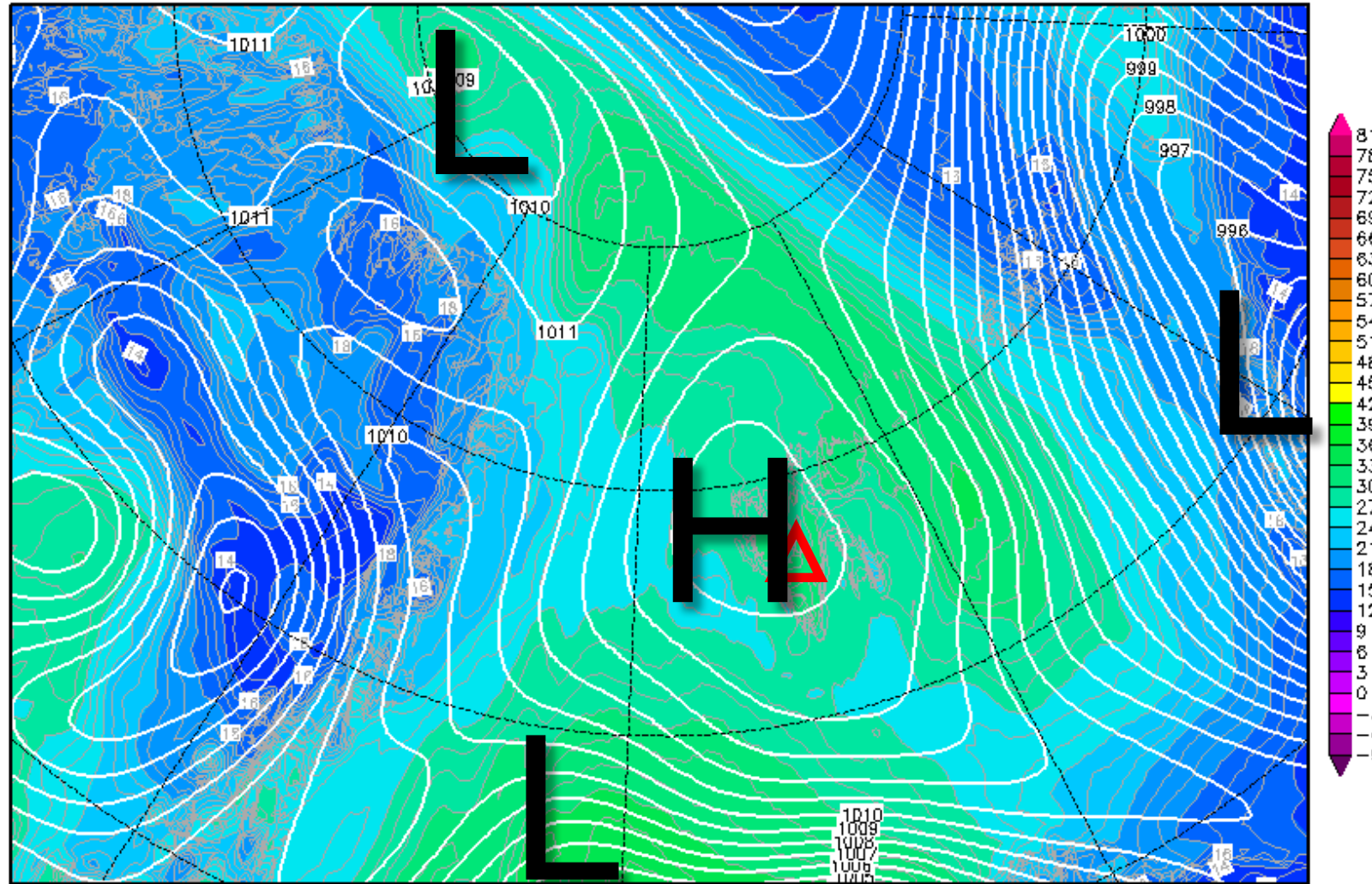


# 850-hPa Theta Equiv. 12 June 2017 @ 12 UTC

Init : Fri,09JUN2017 00Z

Valid: Mon,12JUN2017 12Z

*Bodendruck (hPa) und 850 hPa Aeq.Pot.T. (Grad C)*



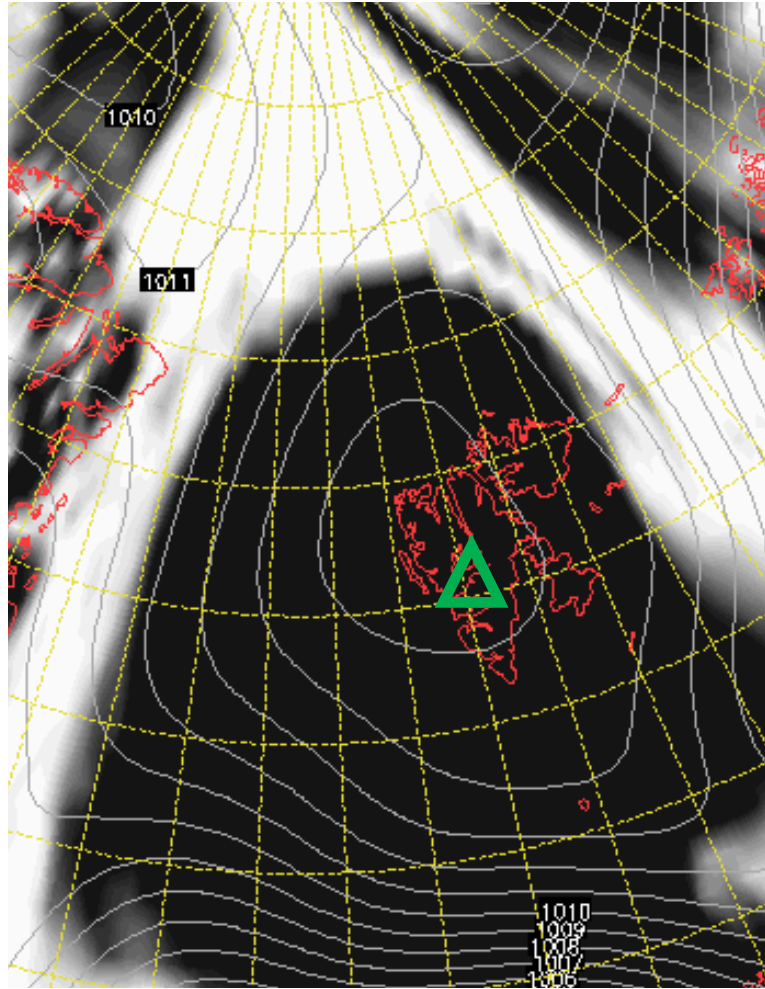
Daten: GFS-Modell des amerikanischen Wetterdienstes

(C) Wetterzentrale

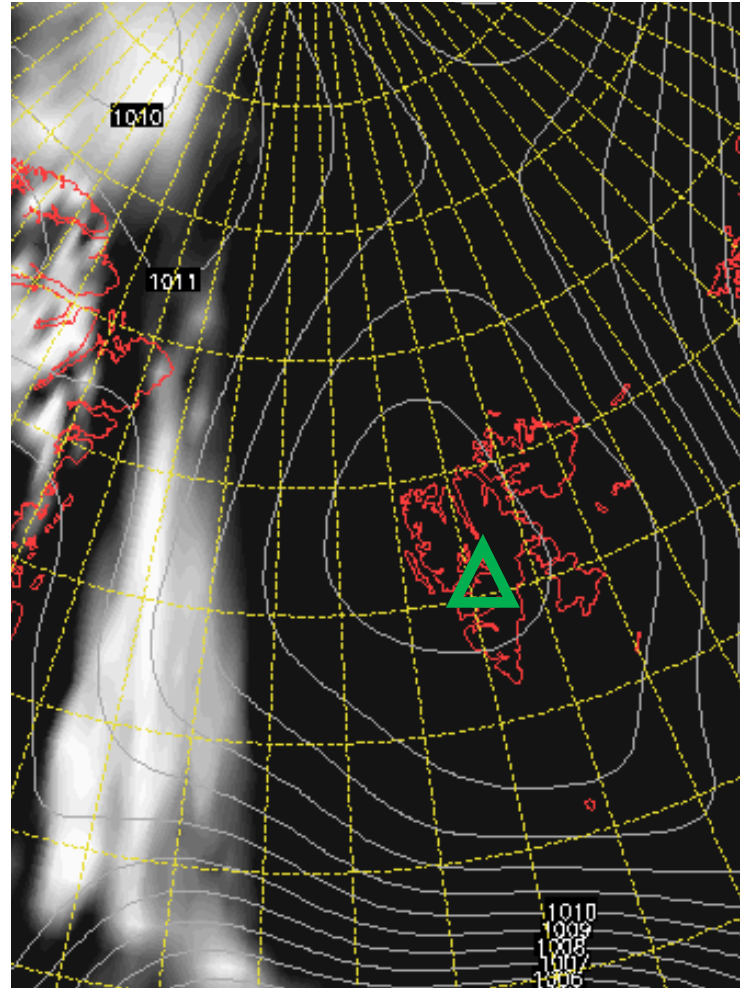
[www.wetterzentrale.de](http://www.wetterzentrale.de)

# Cloud Cover 12 June 2017 @ 12 UTC

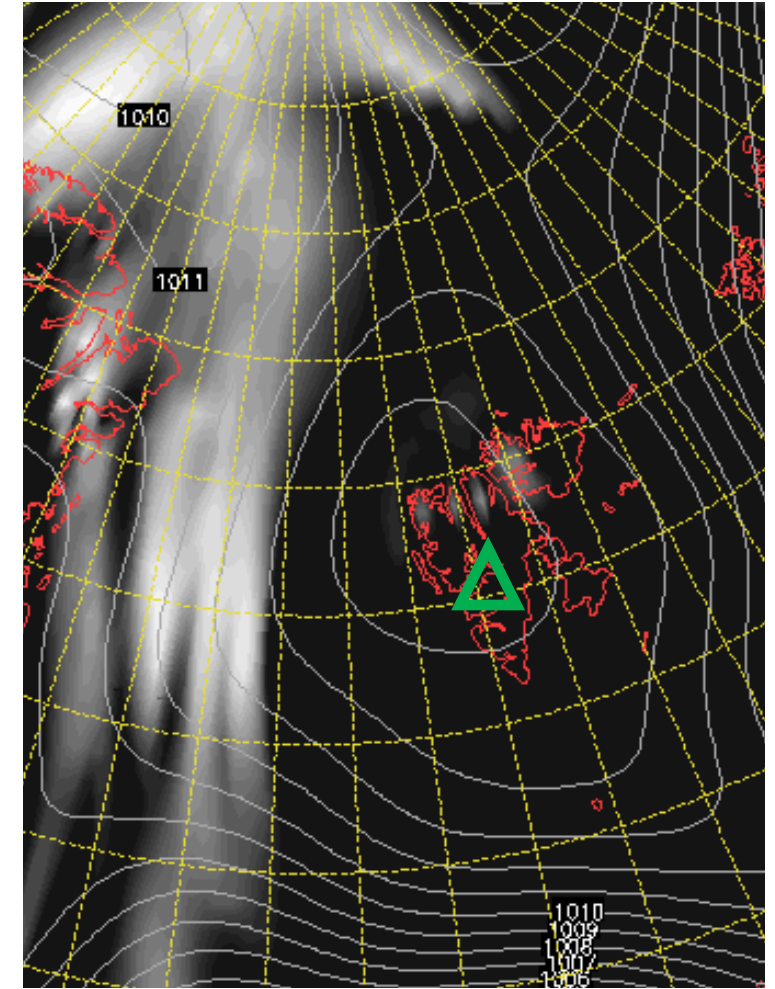
L



M



H

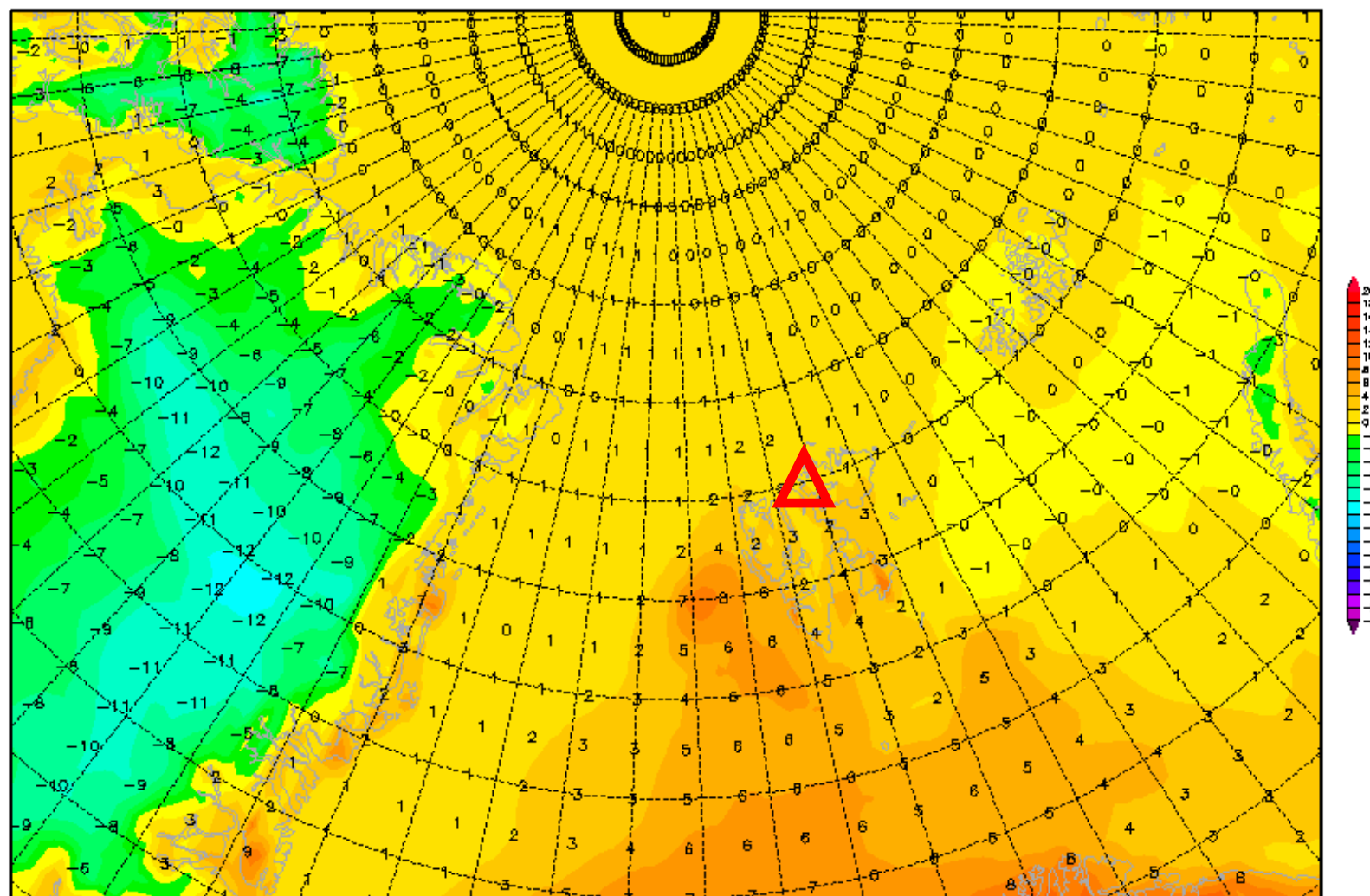


# 2-m temperature 12 June 2017 @ 12 UTC

Init : Fri,09JUN2017 00Z

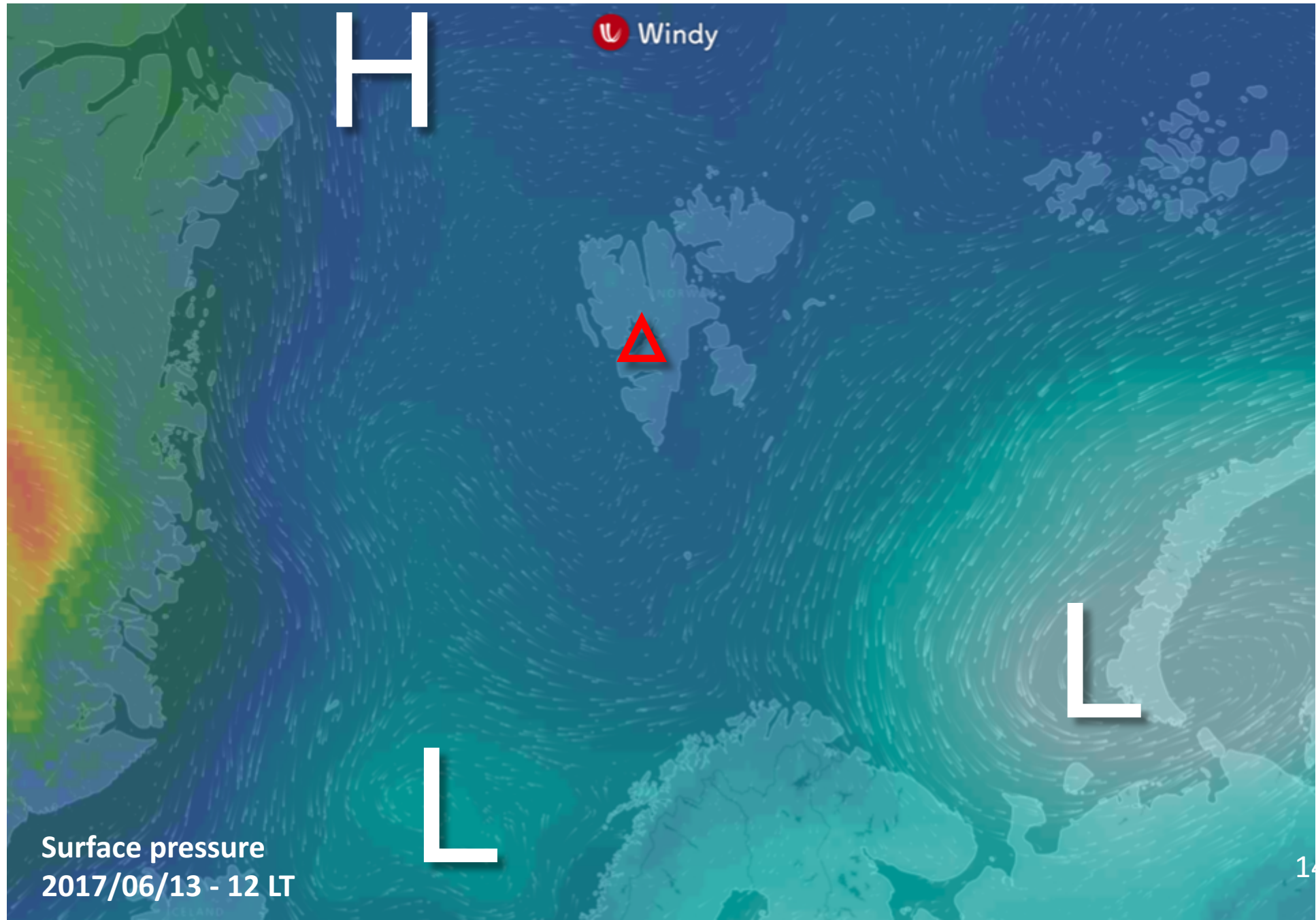
Valid: Mon,12JUN2017 12Z

*2m Temperatur (°C)*





# General Situation Tue 13 June 2017



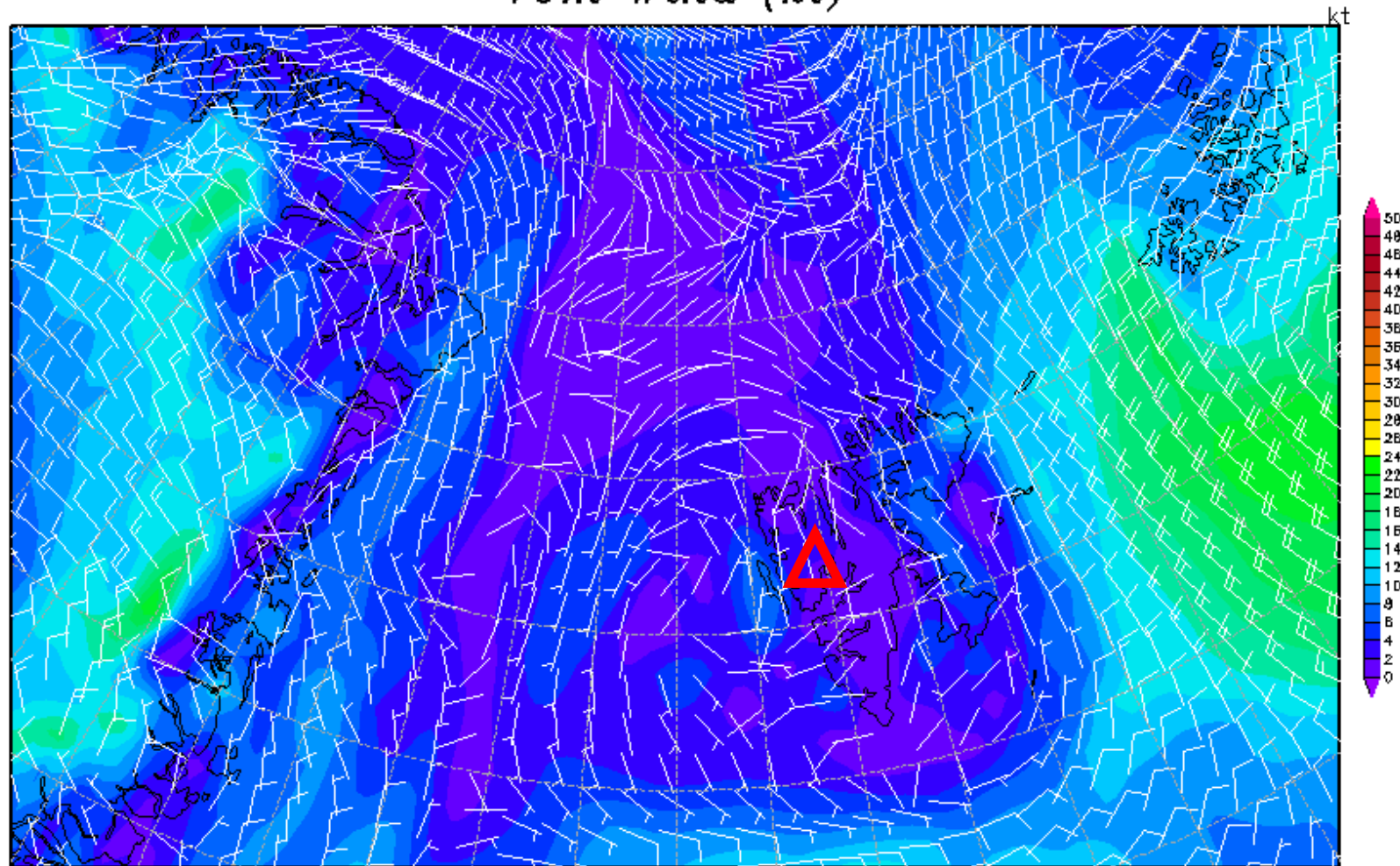


# 10m wind 13 June 2017 @ 12 UTC

Init : Fri,09JUN2017 00Z

Valid: Tue,13JUN2017 12Z

10m Wind (kt)

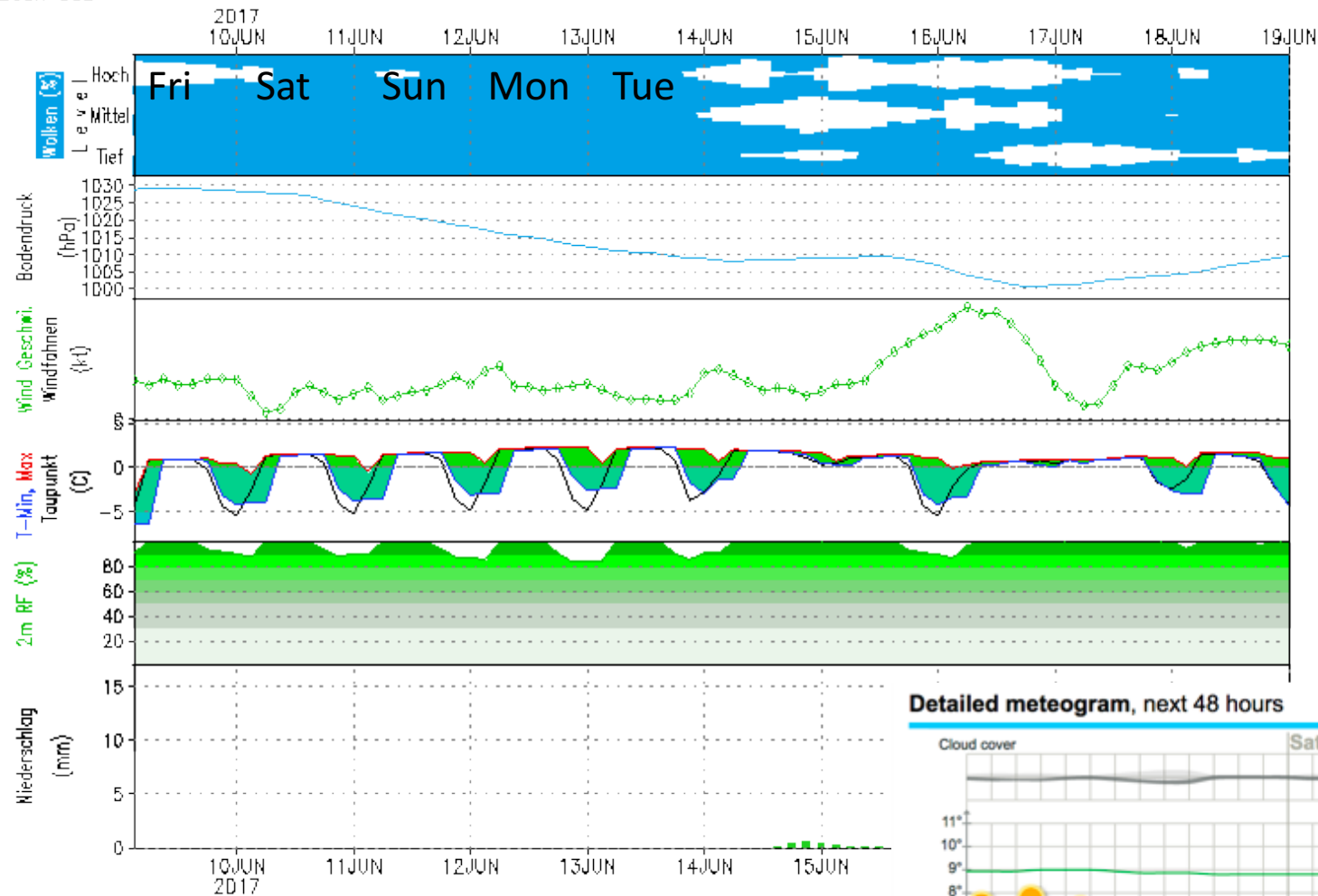


Daten: GFS-Modell des amerikanischen Wetterdienstes  
(C) Wetterzentrale  
[www.wetterzentrale.de](http://www.wetterzentrale.de)

# GFS – Meteogramm

Lon: 15.63 Lat: 78.22 Hgt: 331m

Lauf: 00Z

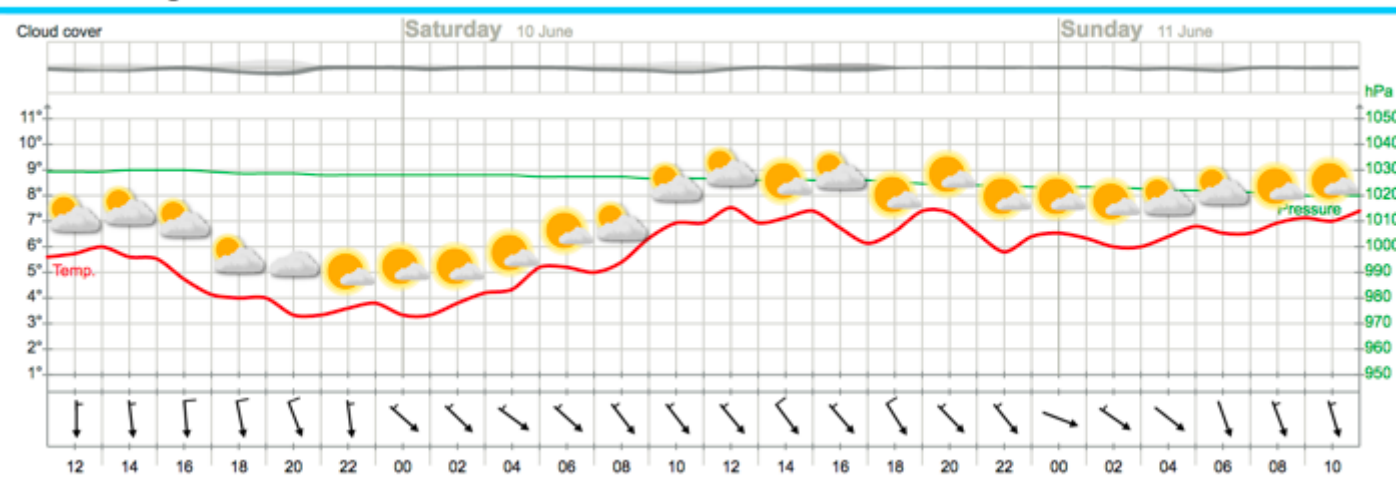


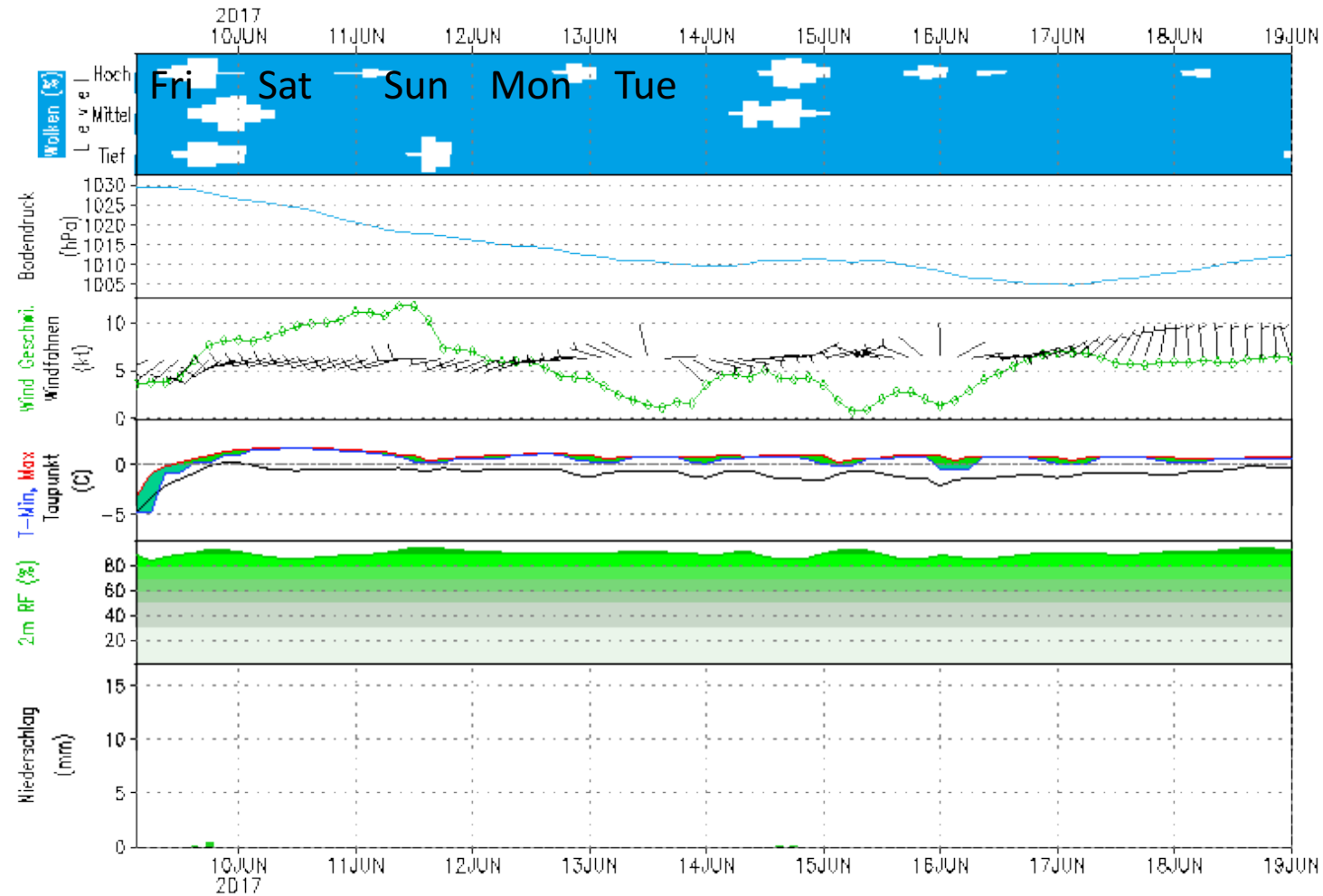
Heute kein Sonnenaufgang  
Heute kein Sonnenuntergang

## Outlook – Meteogram

YR.no

Detailed meteorogram, next 48 hours





Heute kein Sonnenaufgang  
Heute kein Sonnenuntergang

