

Weather briefing

ACLOUD Longyearbyen, Svalbard

Thu 08 June 2017 – **Fri 09 June** – Mon 12 June 2017

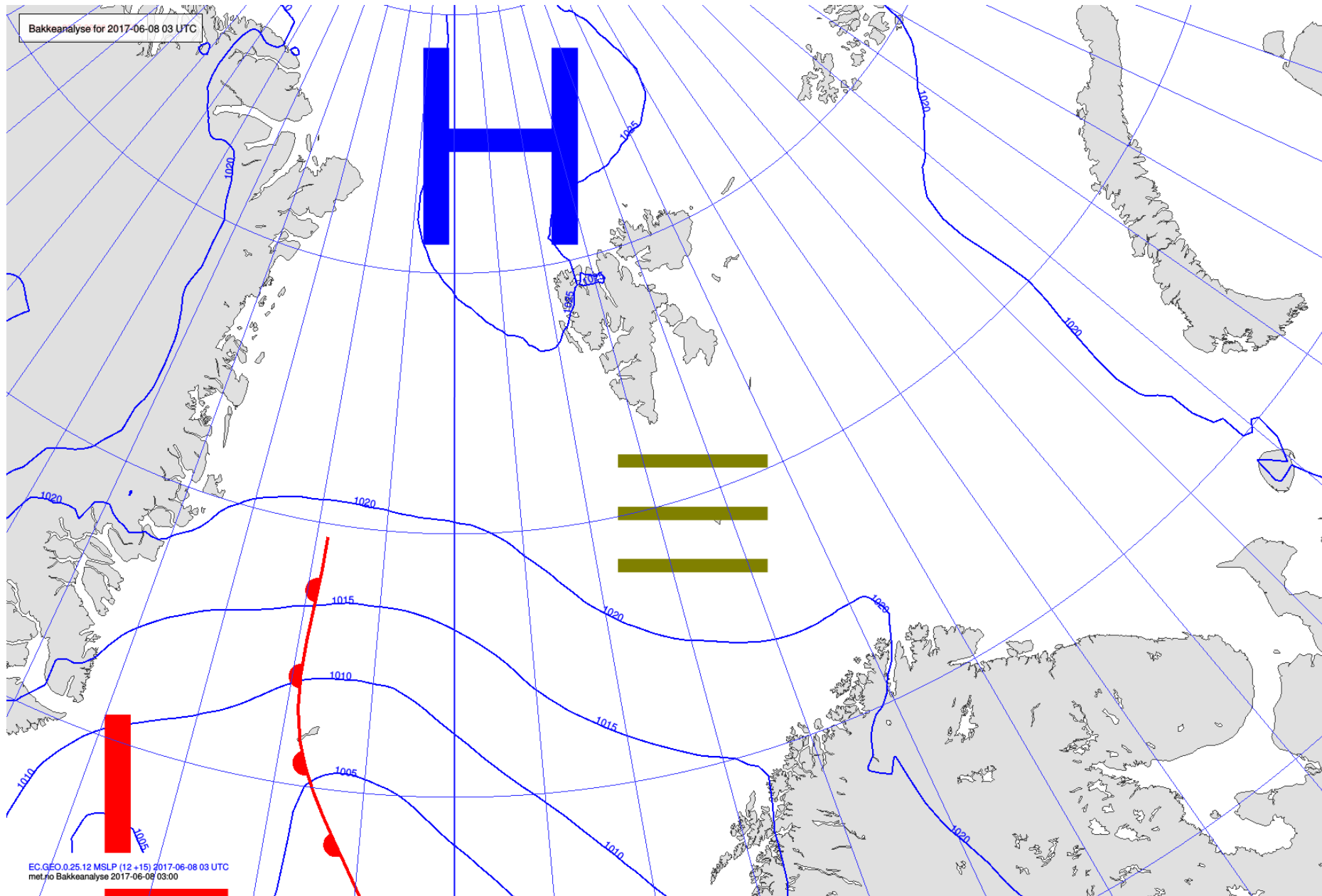
Summary

Spitsbergen is still mainly influenced by a high pressure system with a weak pressure gradient. Therefore wind speeds stay low while coming from changing directions, the main component being west. To the west and north of the archipelago broken low clouds can be found. The sky clears up from the south.

Tomorrow the wind stays calm. More and more moist, warm air is transported the the north along the coast of Greenland, bringing clouds in all levels.

- Position of Polarstern (semi stationary) 81.94° N, 10.92° E

Analysis 08 June 2017 @ 03 UTC

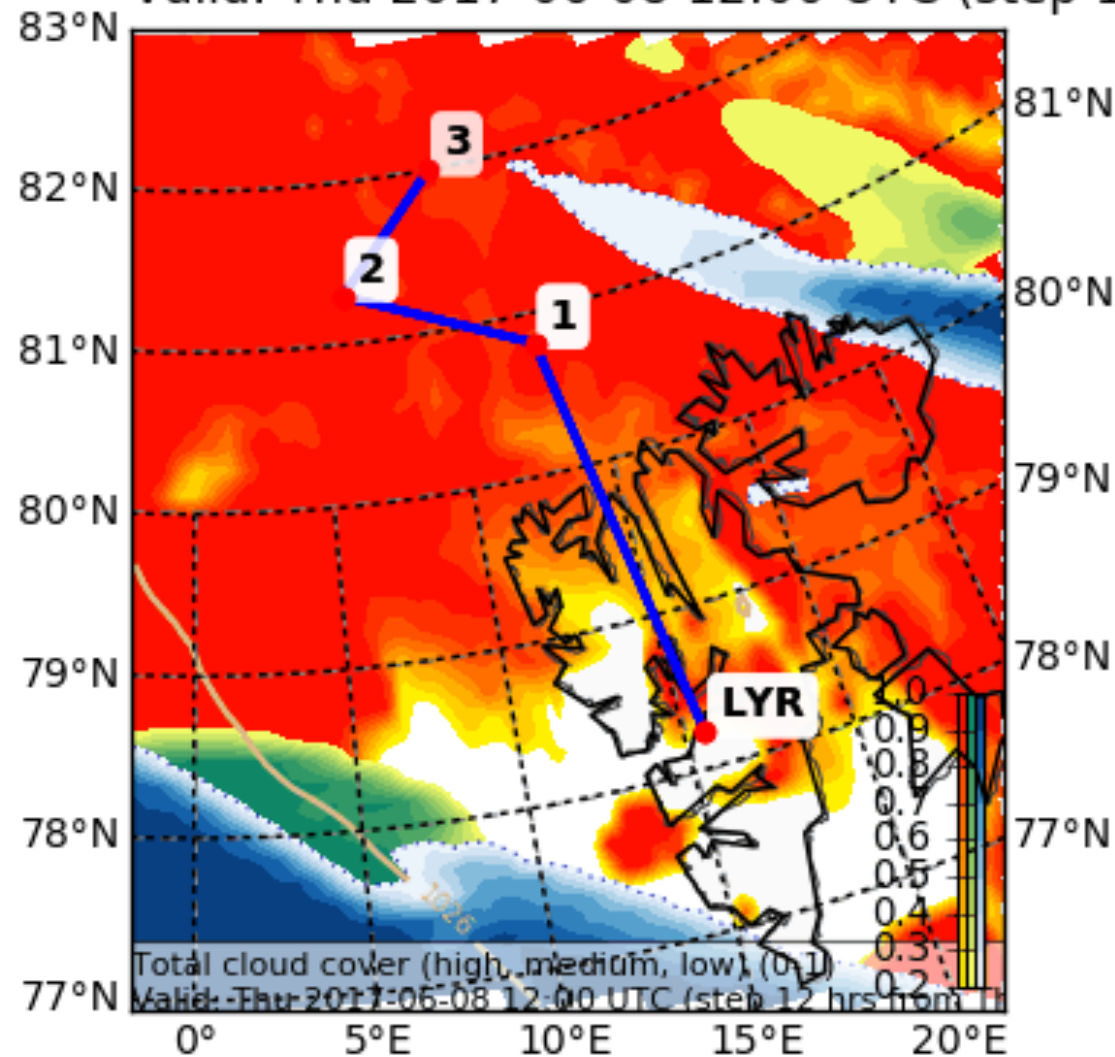


Clouds

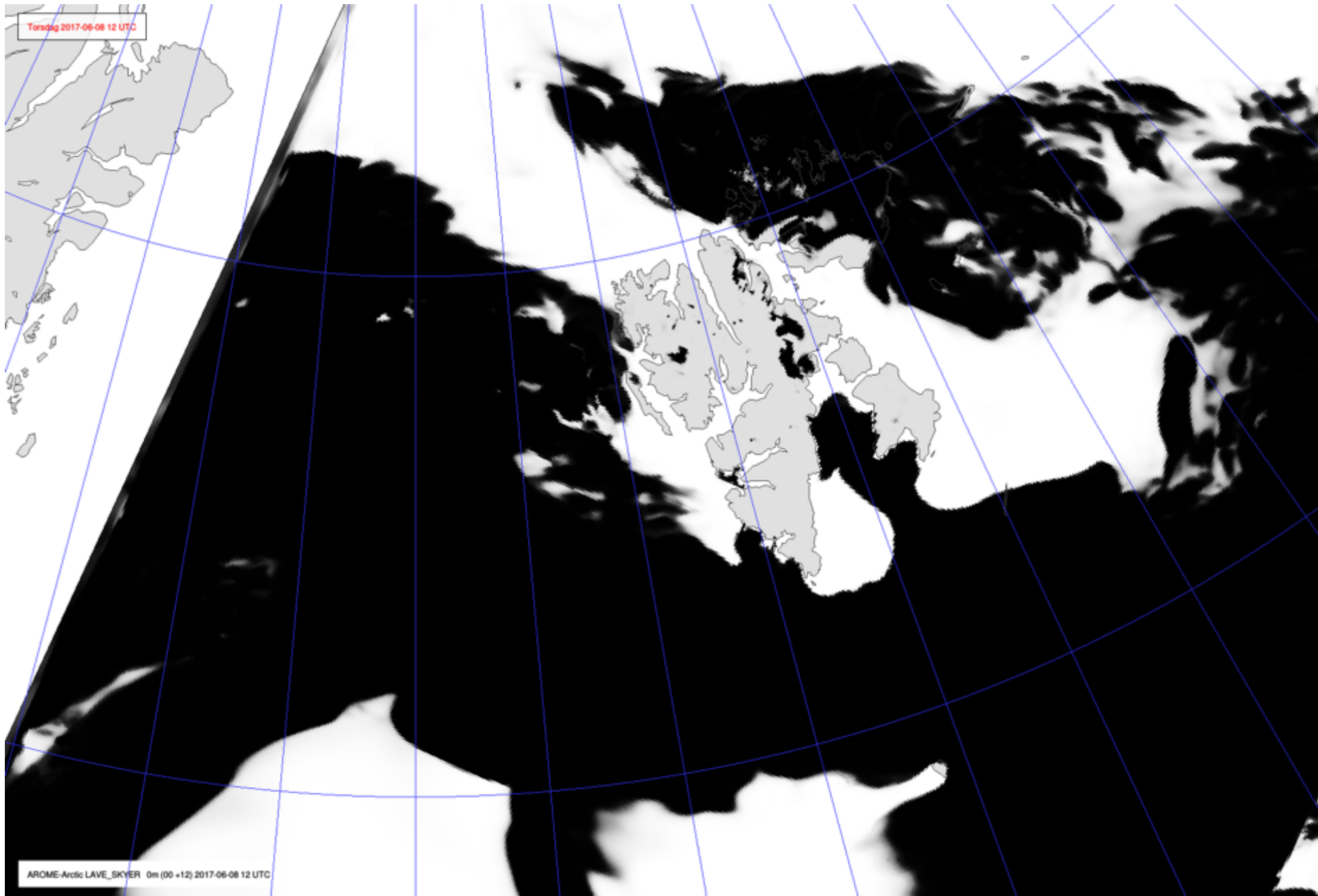
Today 12 UTC

Cloud Cover (0-1) (Total Cloud Cover)

Valid: Thu 2017-06-08 12:00 UTC (step 12 hrs from Thu 2017-06-08 00:00 UTC)

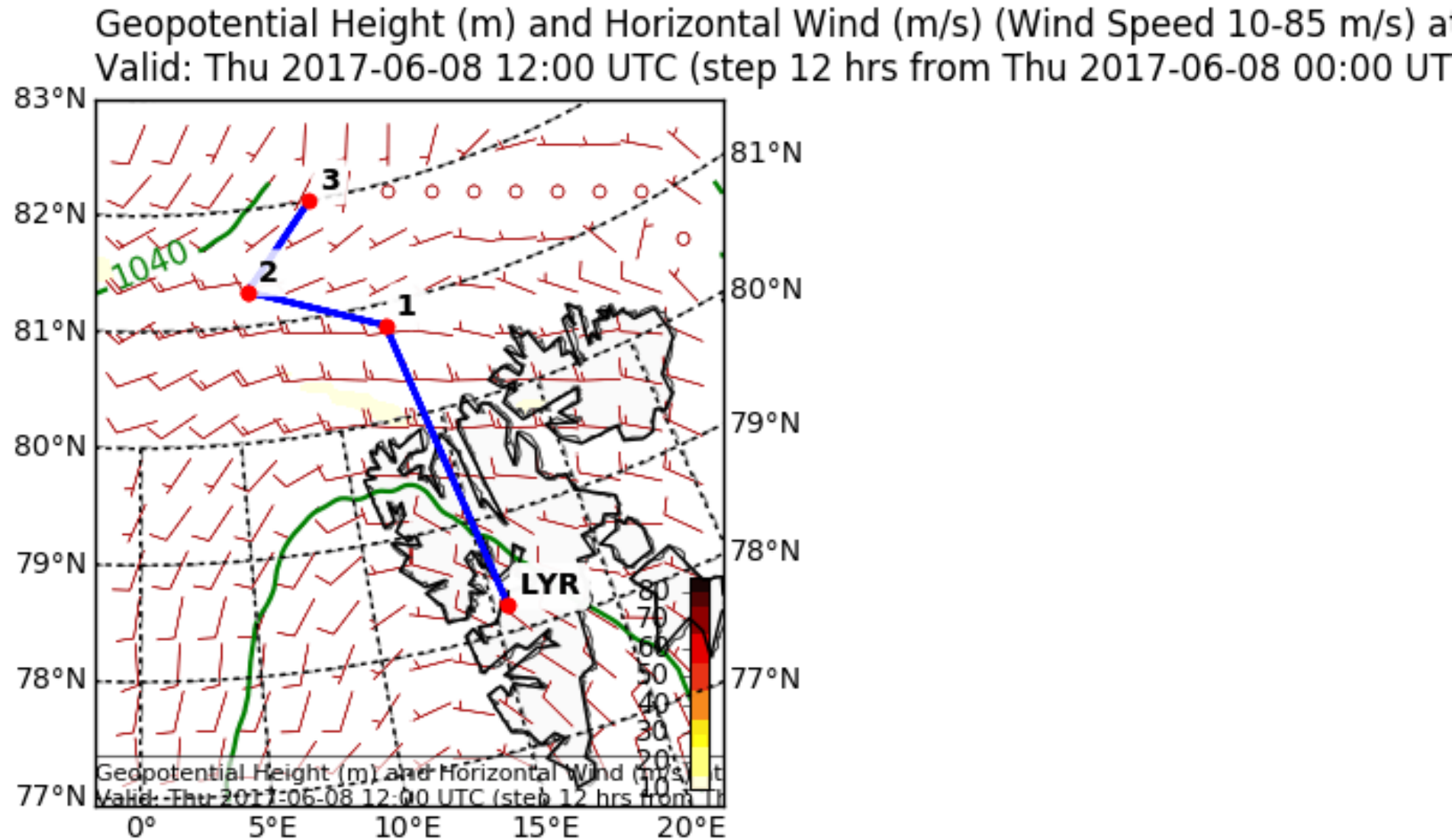


Cloud 08 June 2017 @ 12 UTC

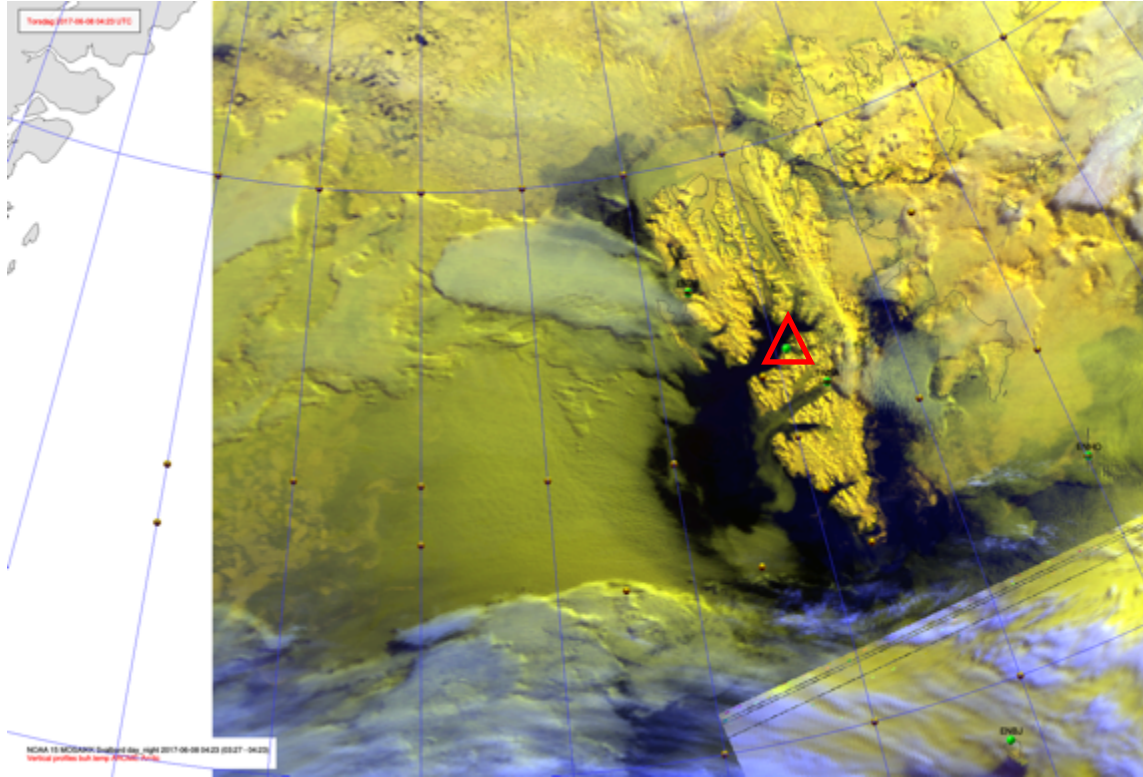


Wind

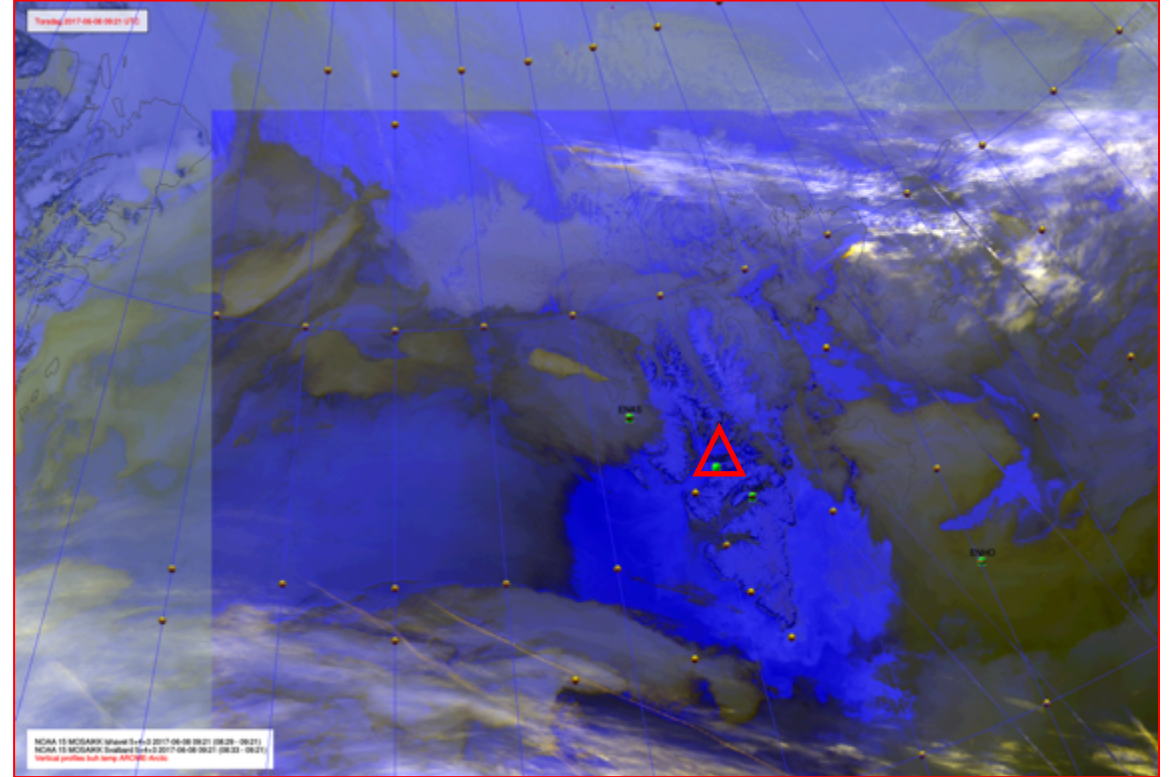
Today 12 UTC



NOAA-19 08 June 2017 @ 4:23 UTC / 09:21

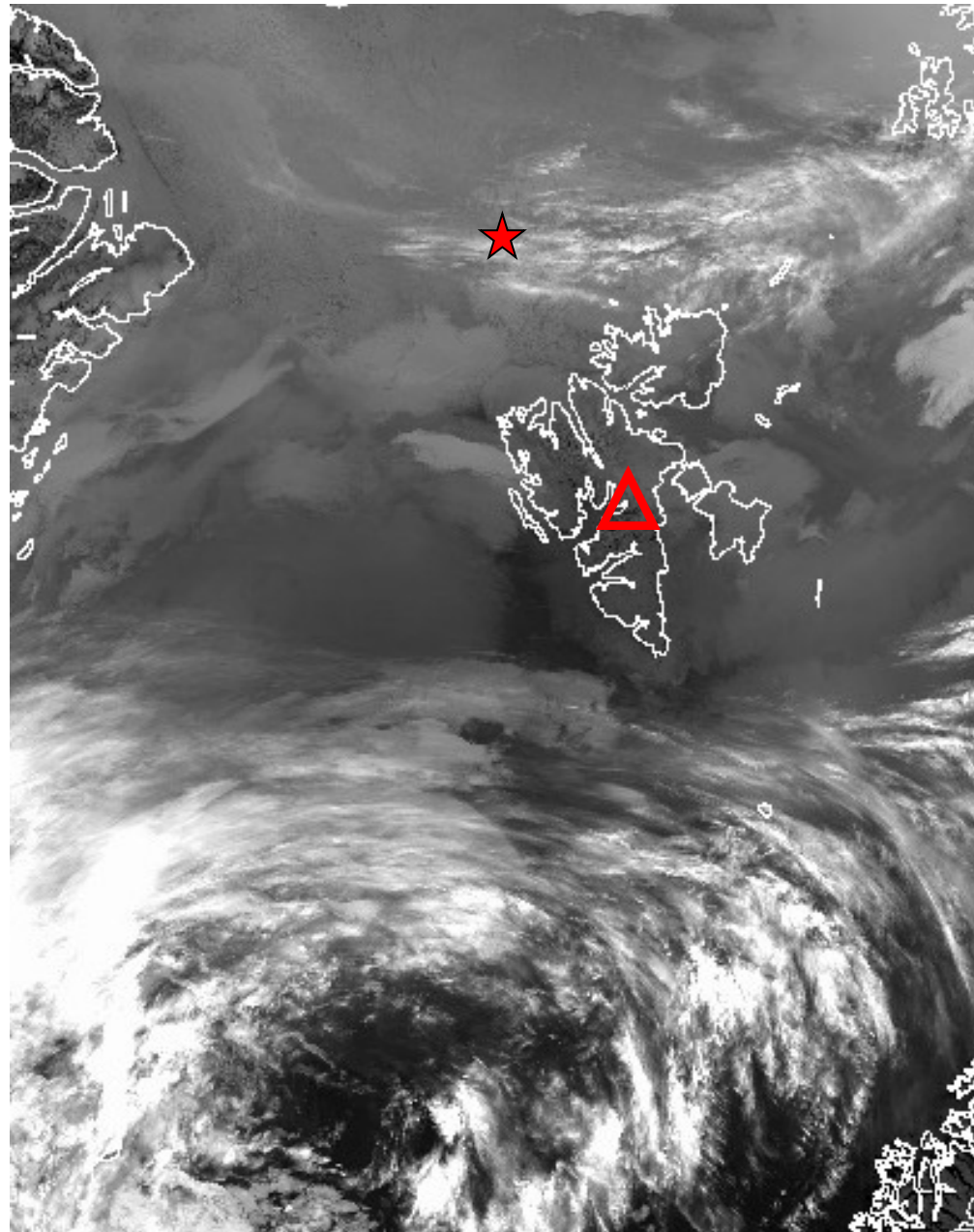


10.8 μm



IR, Ch 5+4+3

NOAA-19 07 June 2017 @ 0653 UTC

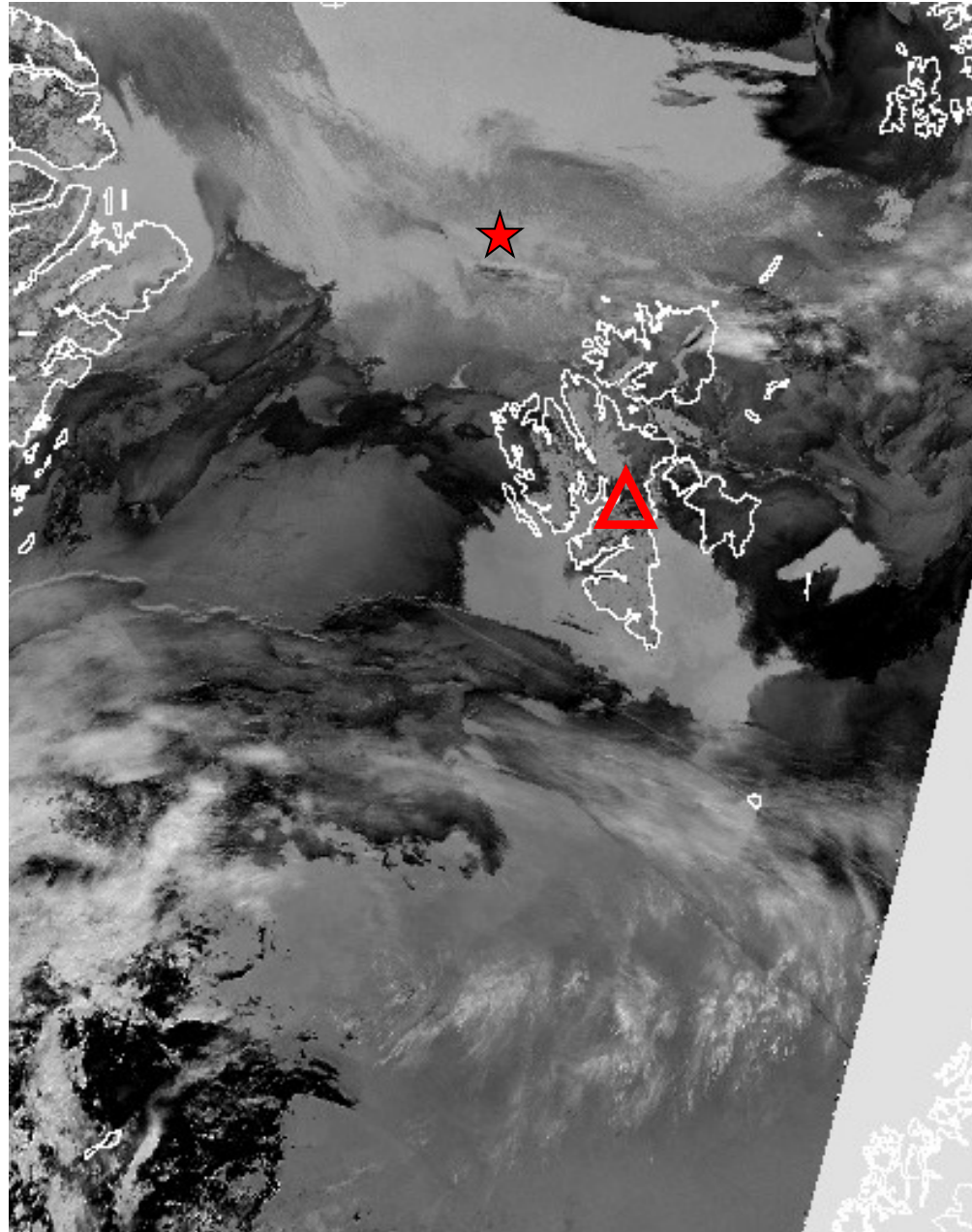


★ RV Polarstern (81.95° N, 10.46° E)

07:04

10.8 μm

NOAA-19 07 June 2017 @ 1016UTC



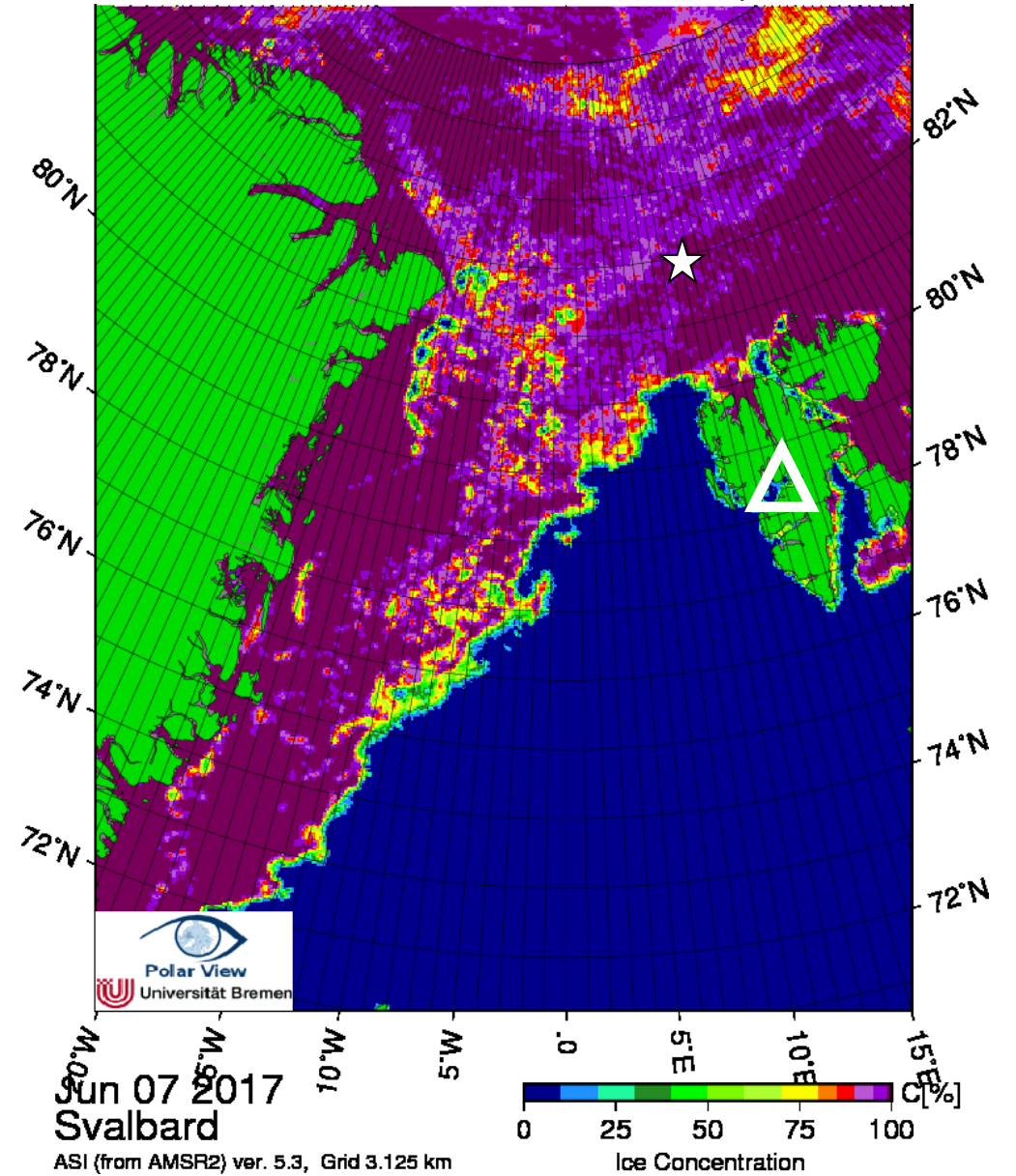
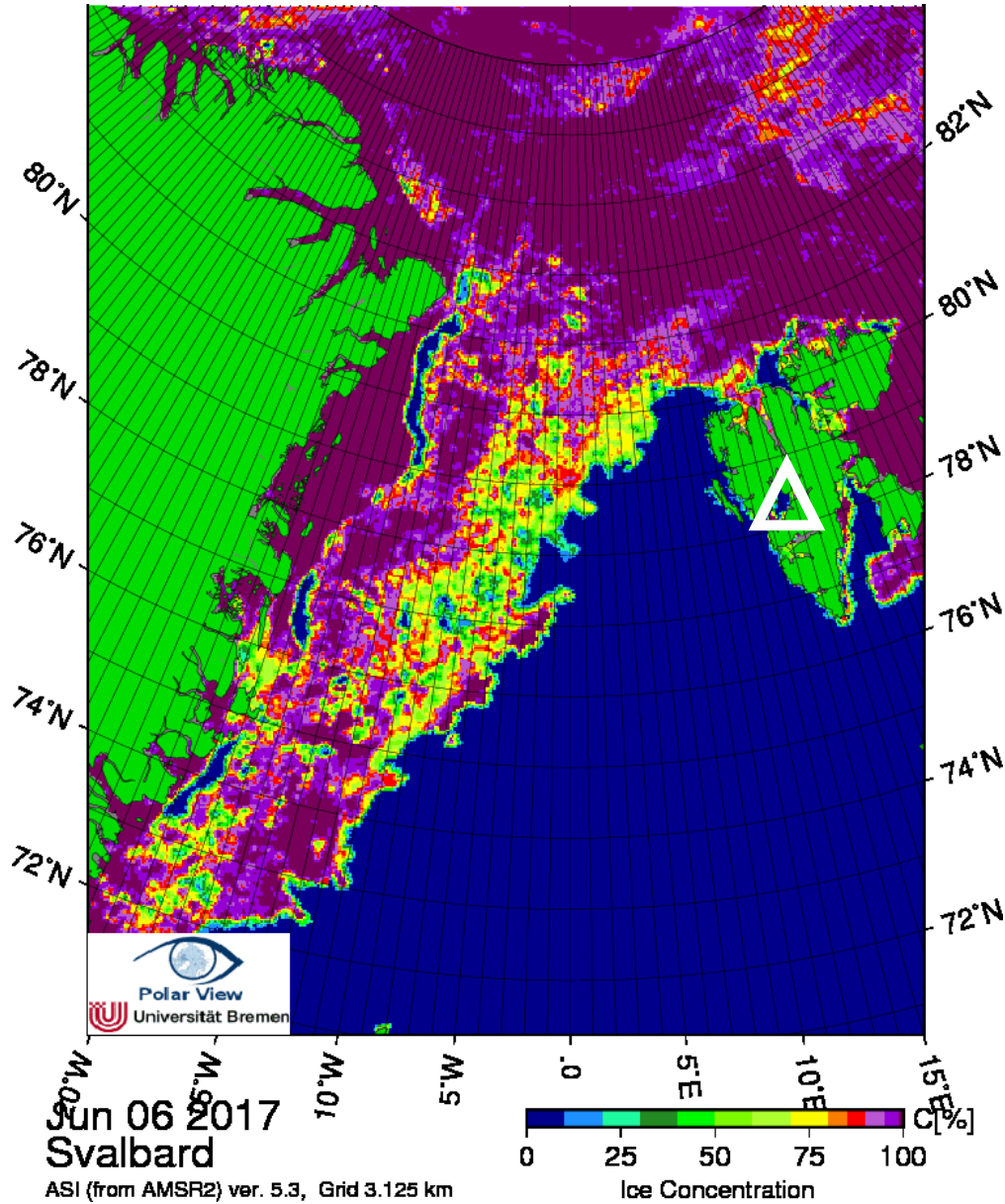
★ RV Polarstern (81.95° N, 10.46° E)

07:04

3.7 μm

Arctic sea ice 6 June & 7 June 2017

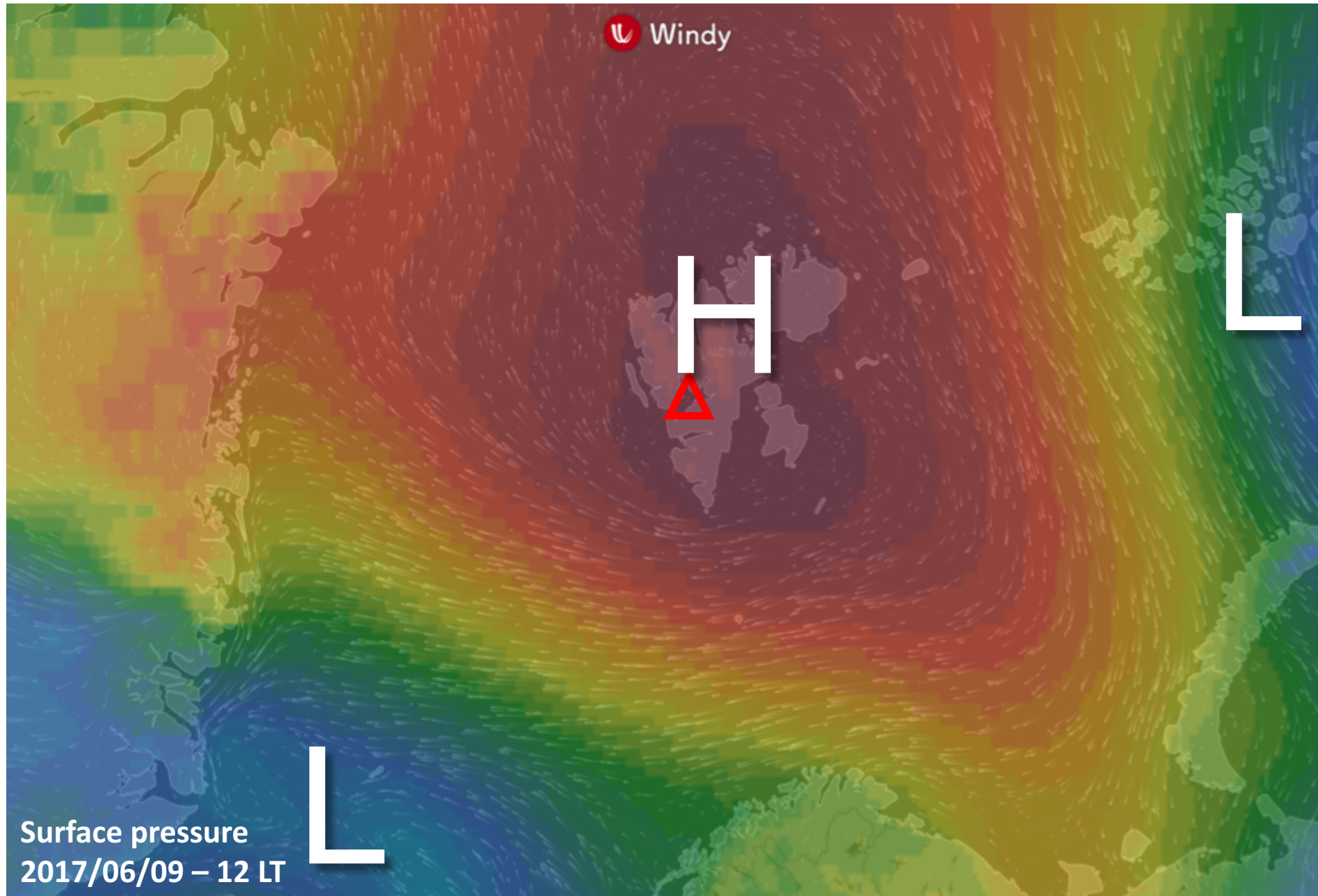
☆ RV Polarstern 5 June 81.94° N, 10.92° E



Tomorrow

Fri 09 June 2017

General Situation Fri 09 June 2017

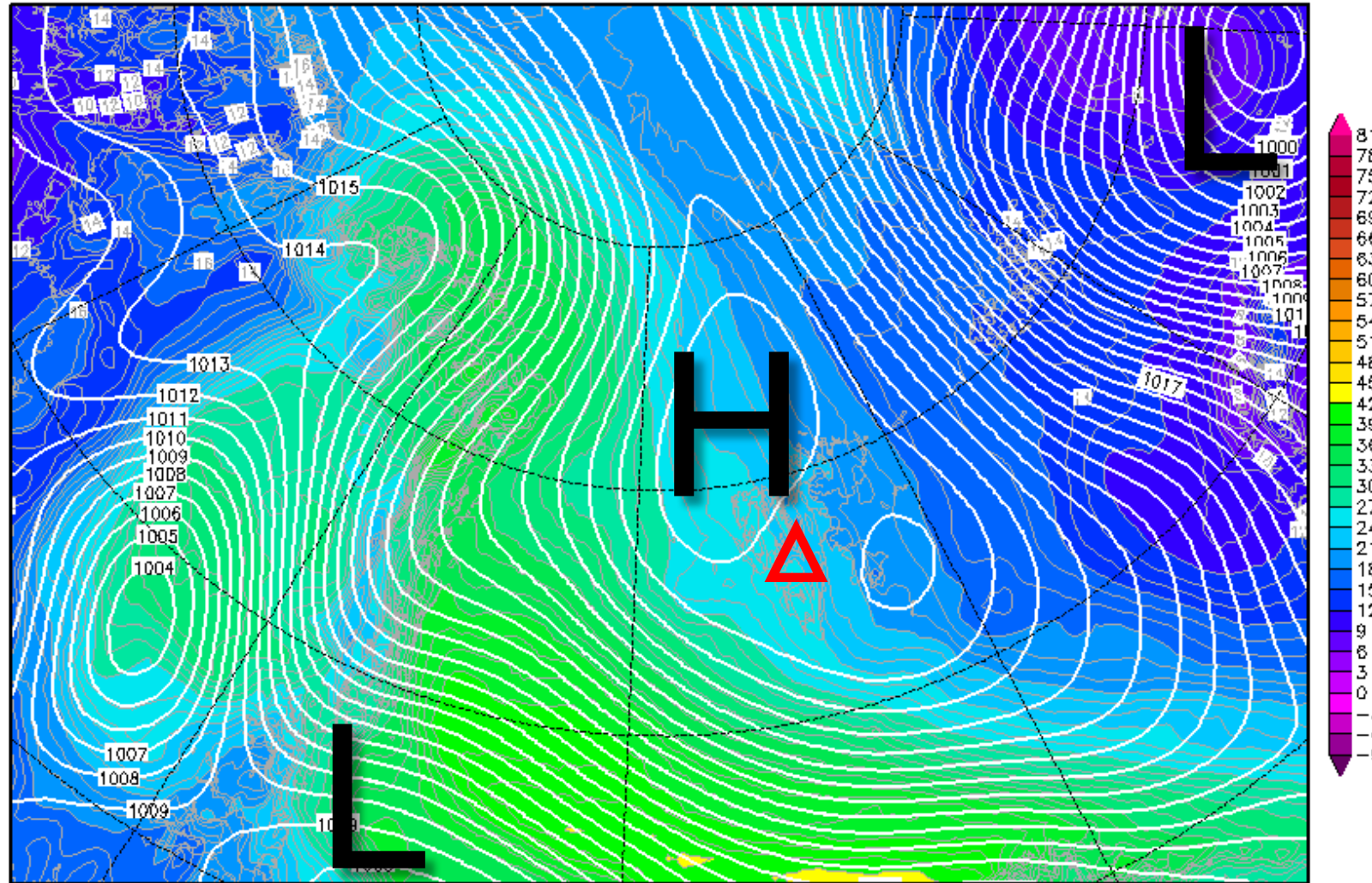


850-hPa Theta Equiv. 09 June 2017 @ 12 UTC

Init : Thu,08JUN2017 00Z

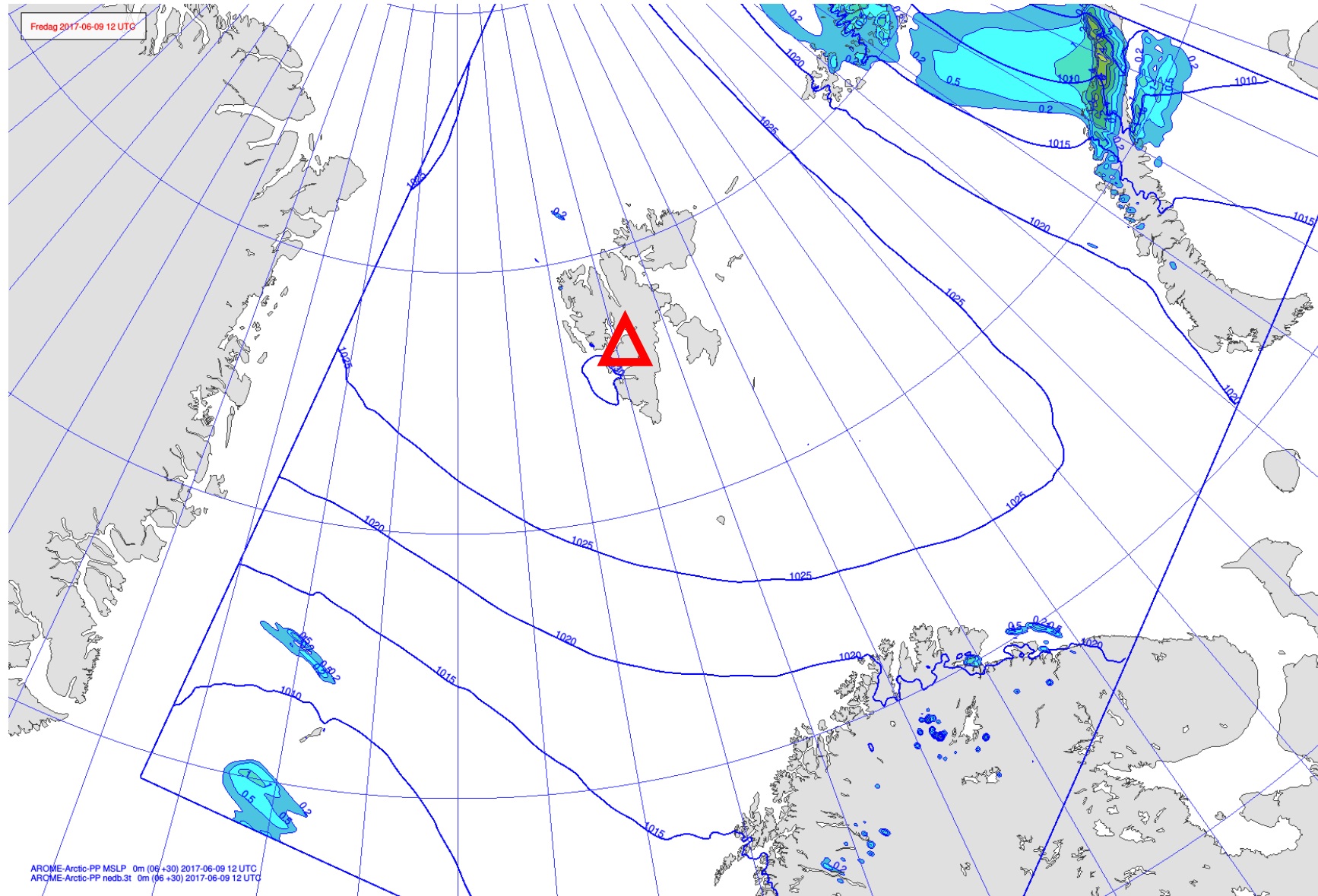
Valid: Fri,09JUN2017 12Z

Bodendruck (hPa) und 850 hPa Aeq.Pot.T. (Grad C)



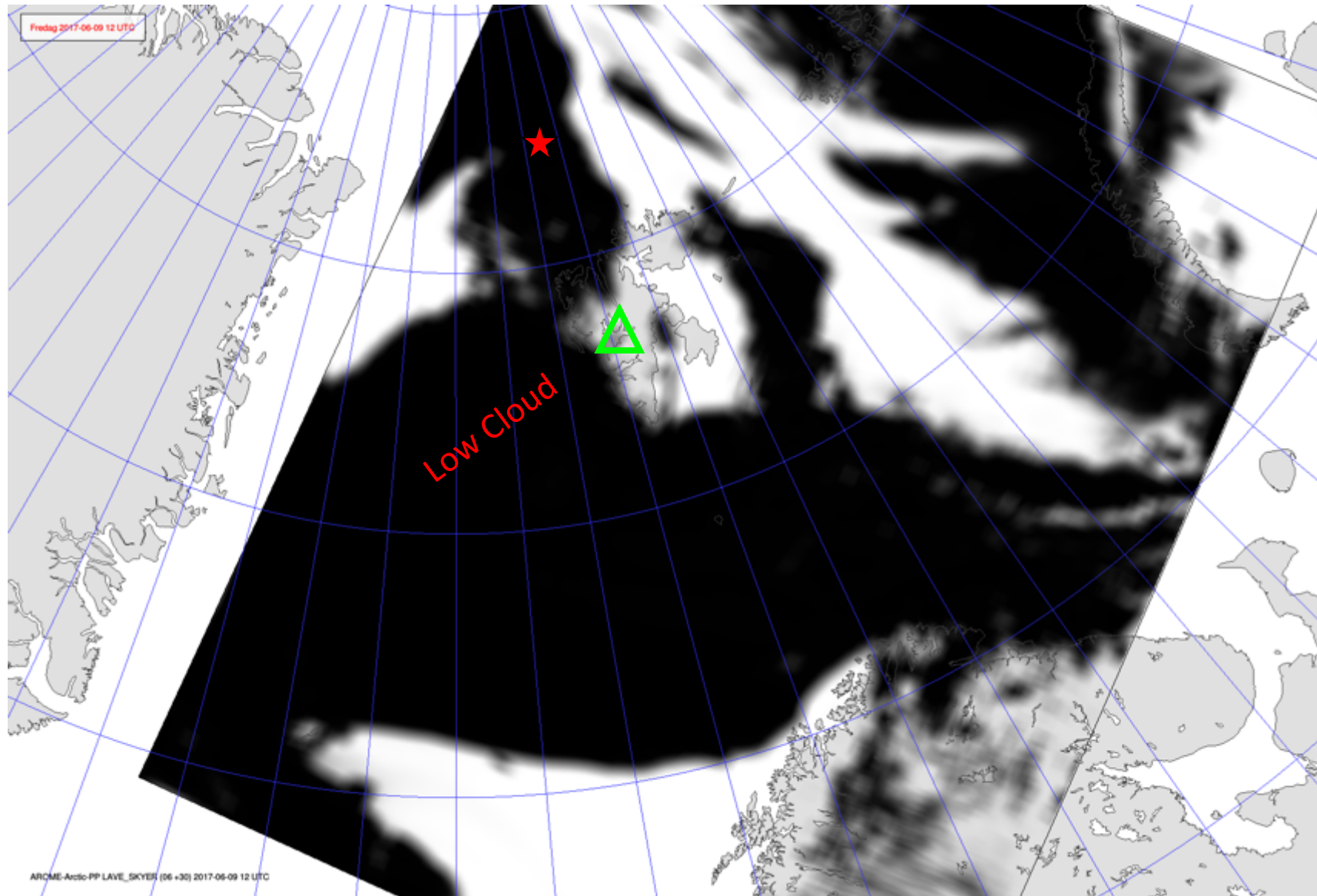
Daten: GFS-Modell des amerikanischen Wetterdienstes
(C) Wetterzentrale
www.wetterzentrale.de

Precipitation Wind 09 June 2017 @ 12 UTC

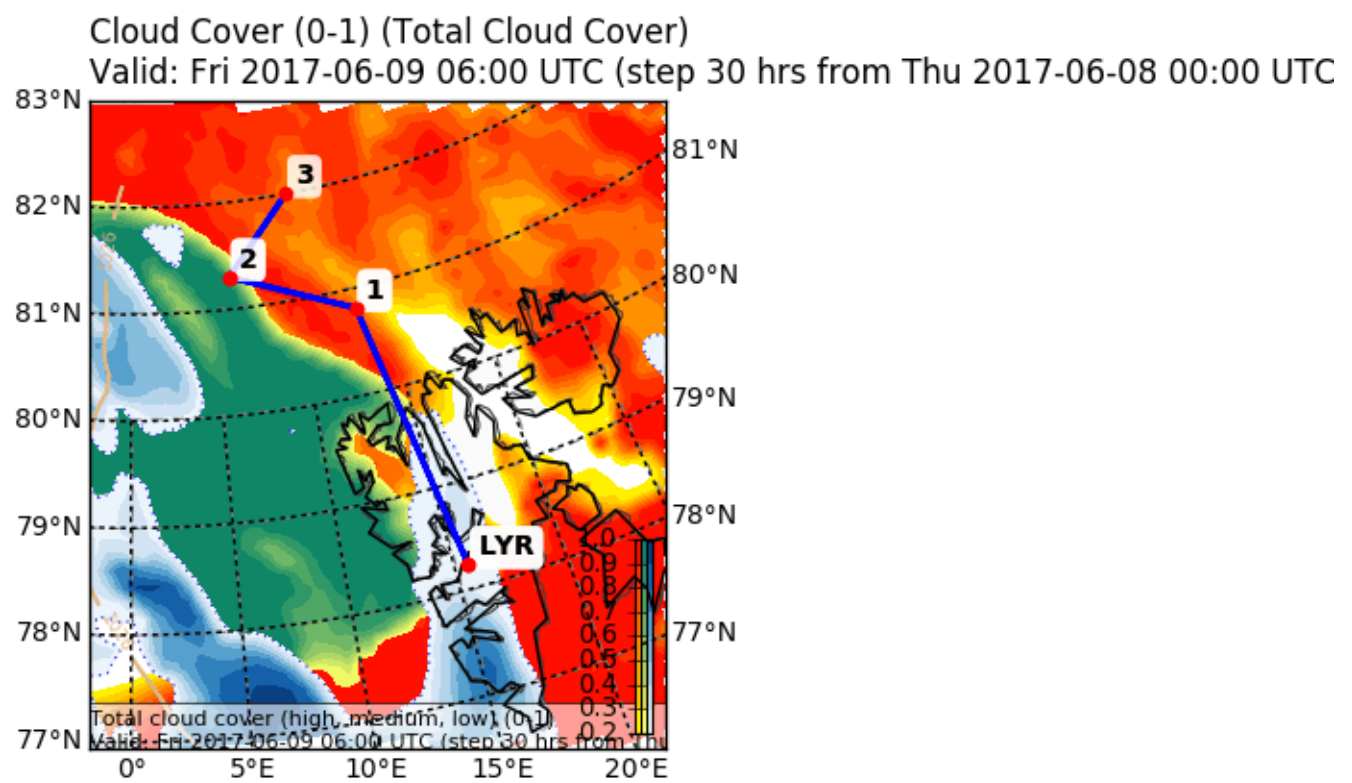


Low-level cloud cover 09 June 2017 @ 12 UTC

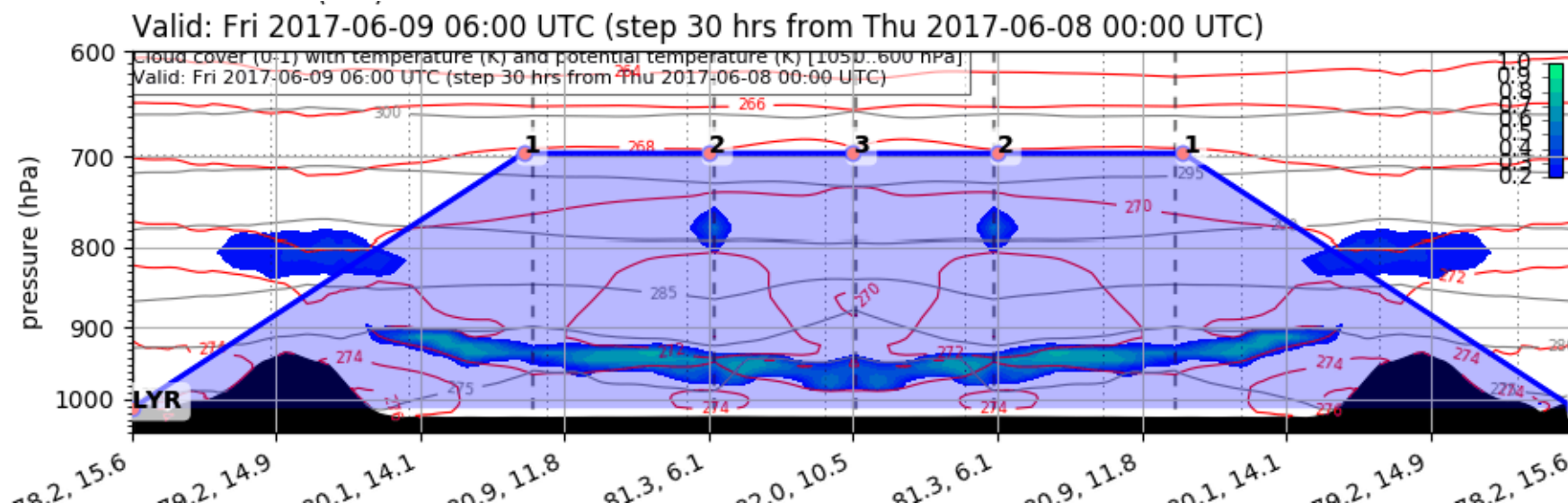
★ RV Polarstern (81.94° N, 10.92° E)



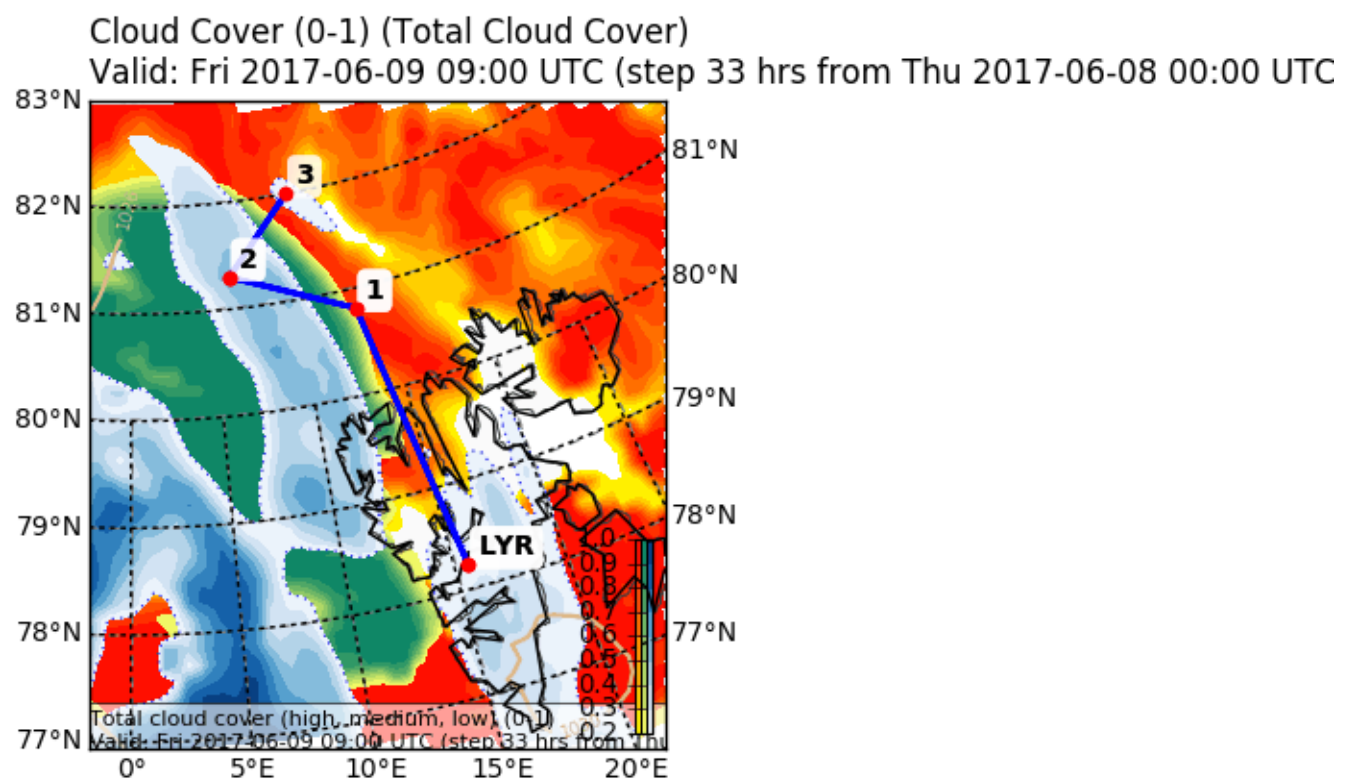
Forecast Friday 06 UTC



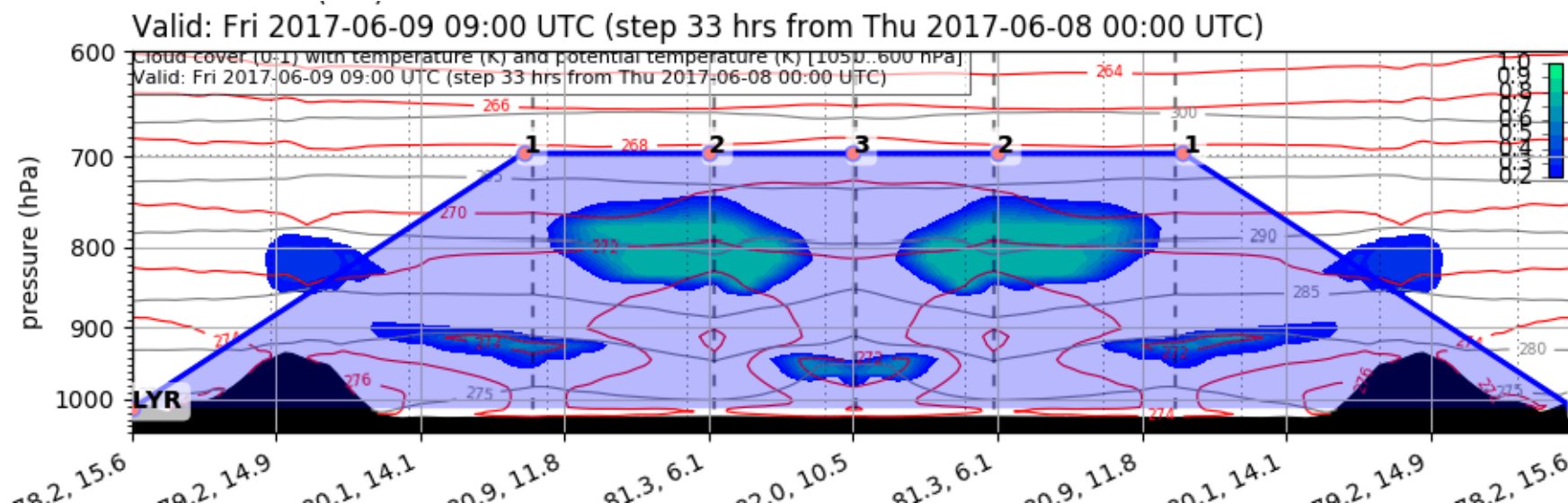
EPSG:77790000



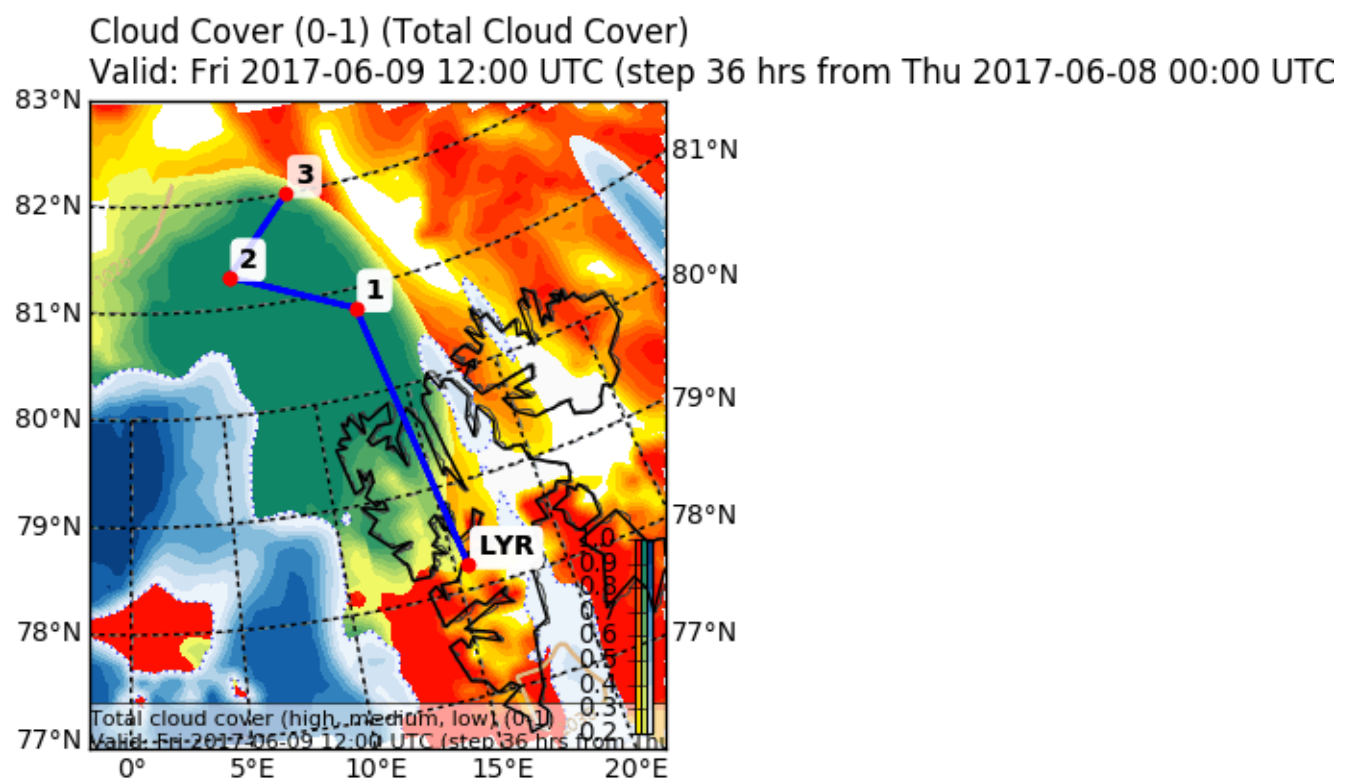
Forecast Friday 09 UTC



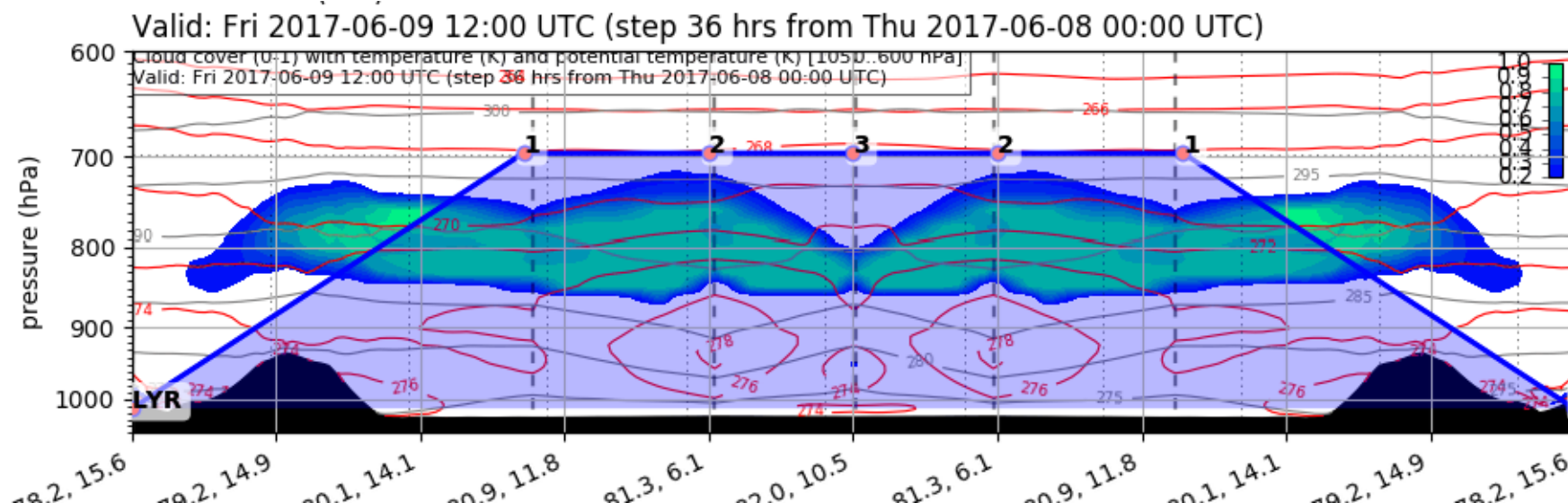
EPSG:77790000



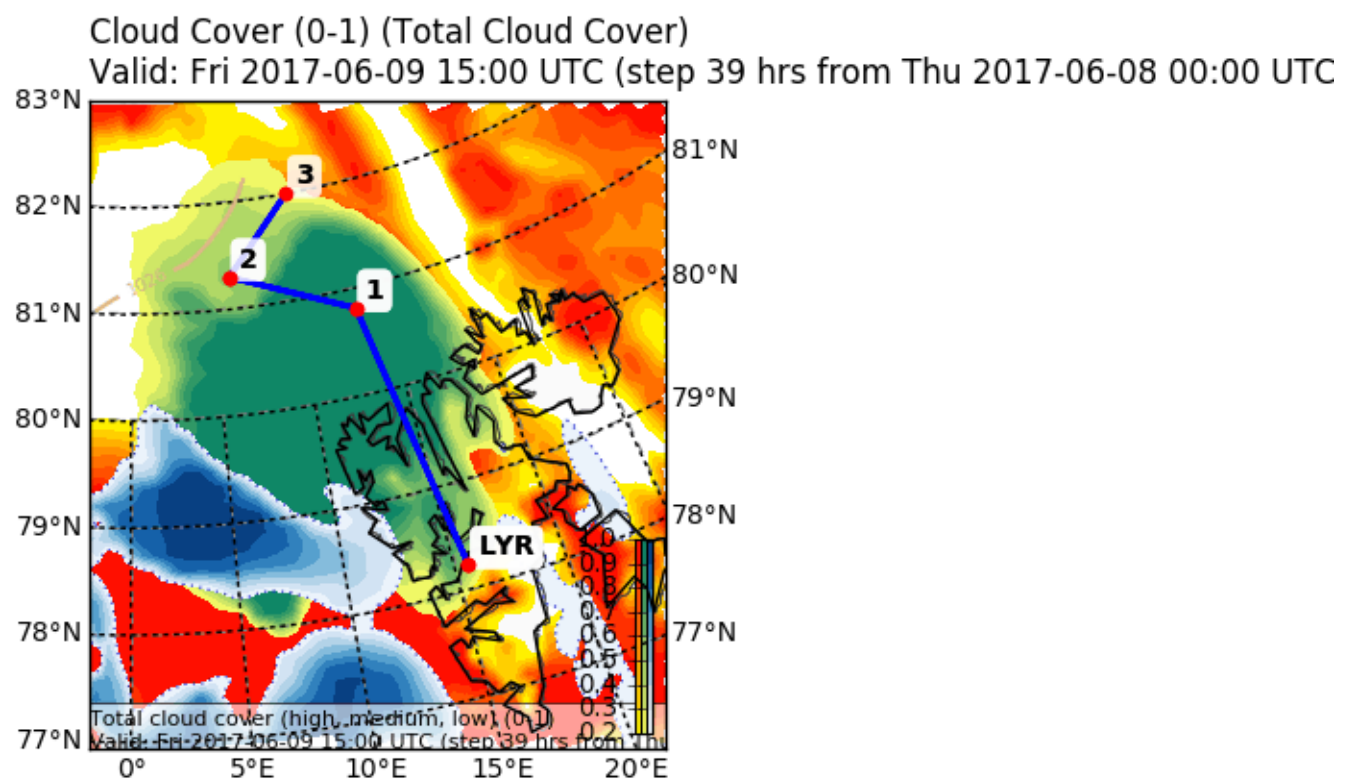
Forecast Friday 12 UTC



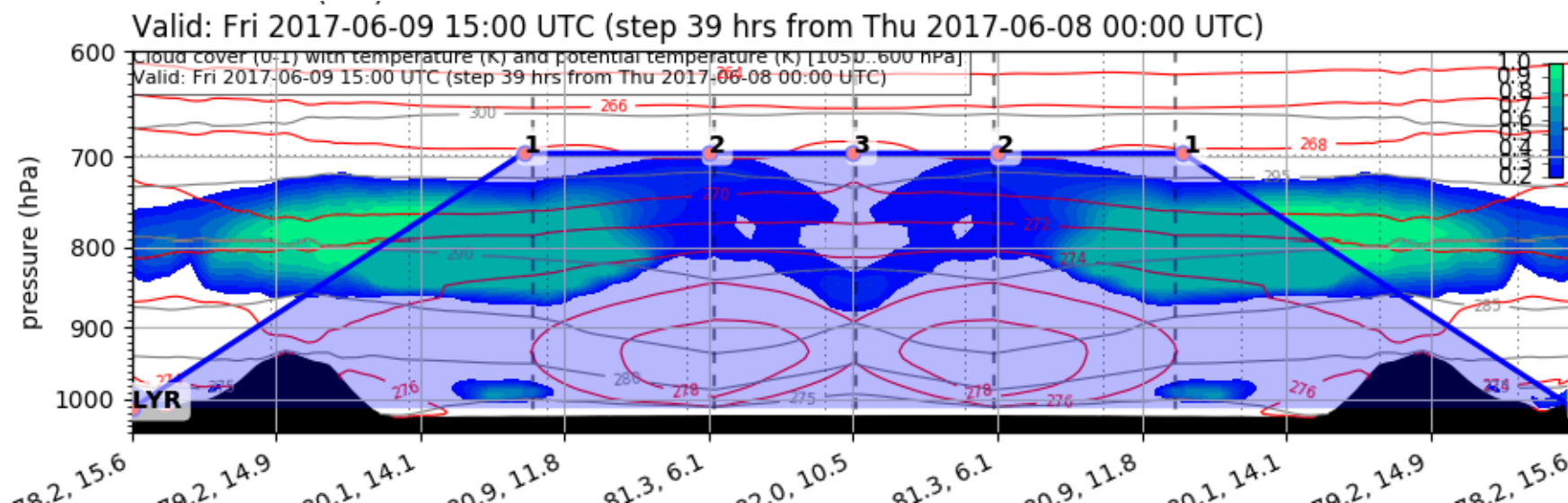
EPSG:77790000



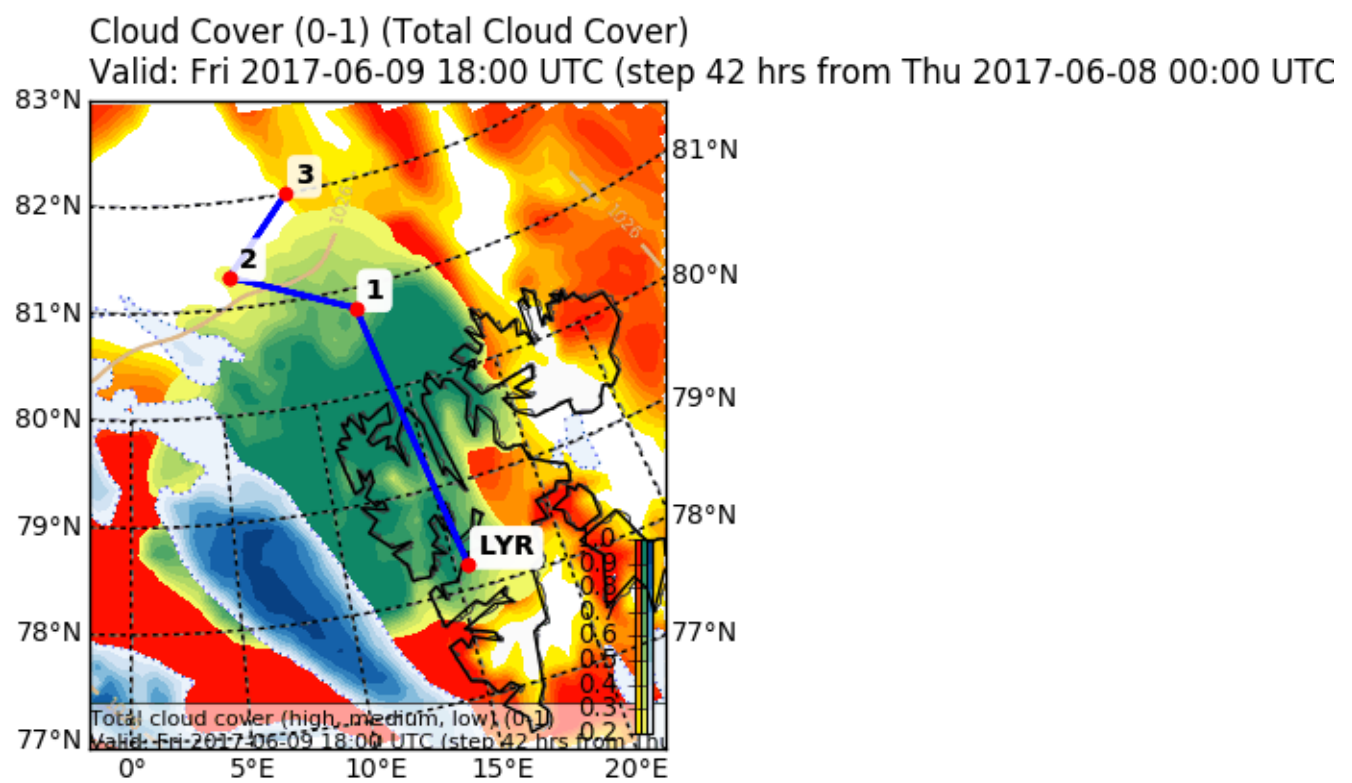
Forecast Friday 15 UTC



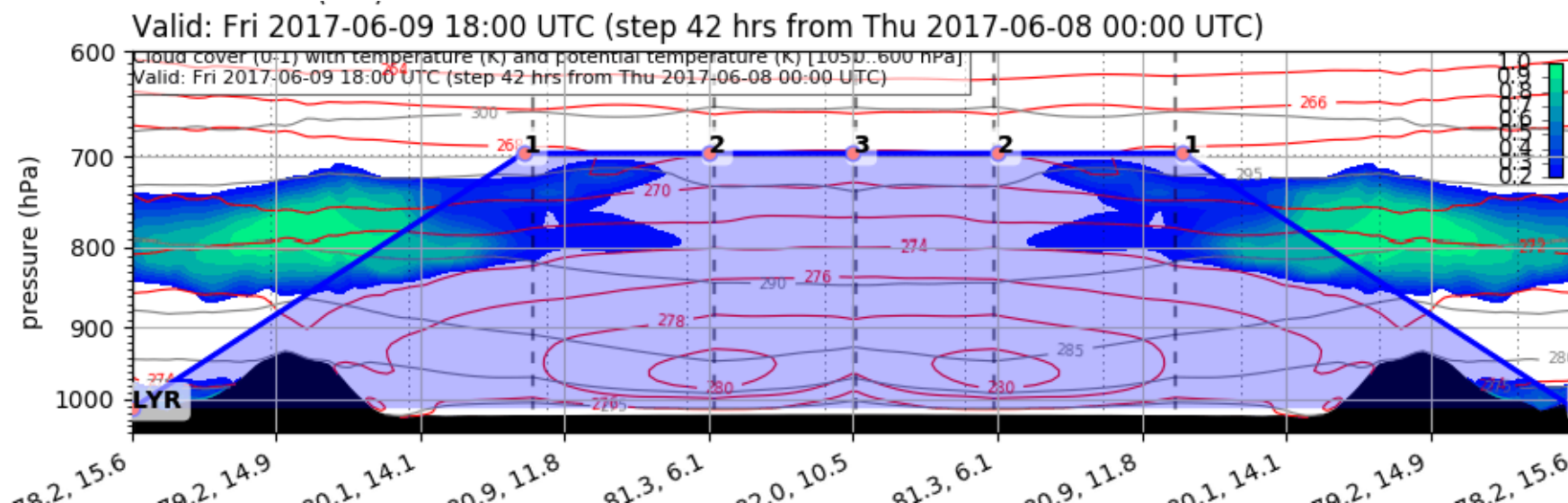
EPSG:77790000



Forecast Friday 18 UTC

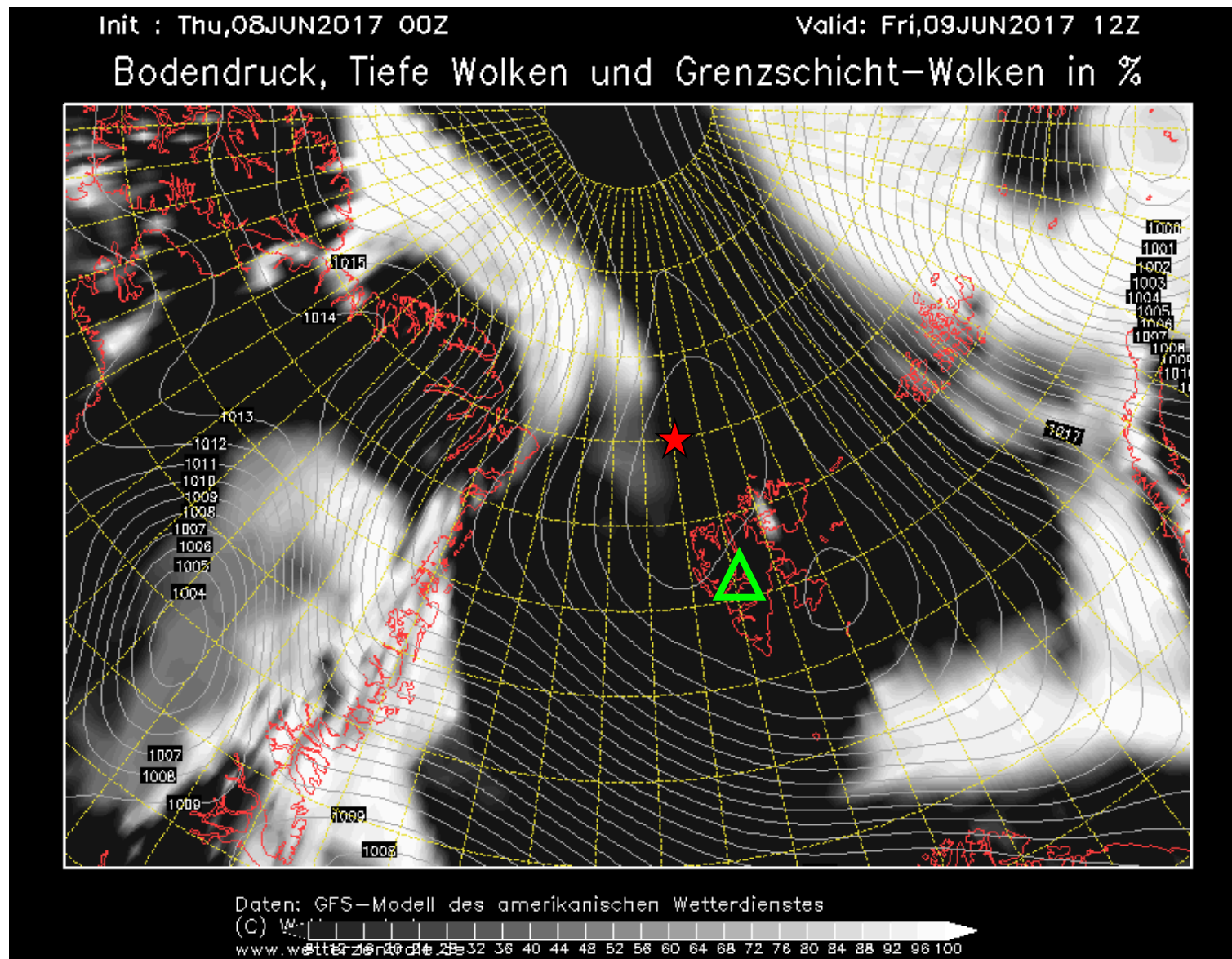


EPSG:77790000



Low-level cloud cover 09 June 2017 @ 12 UTC

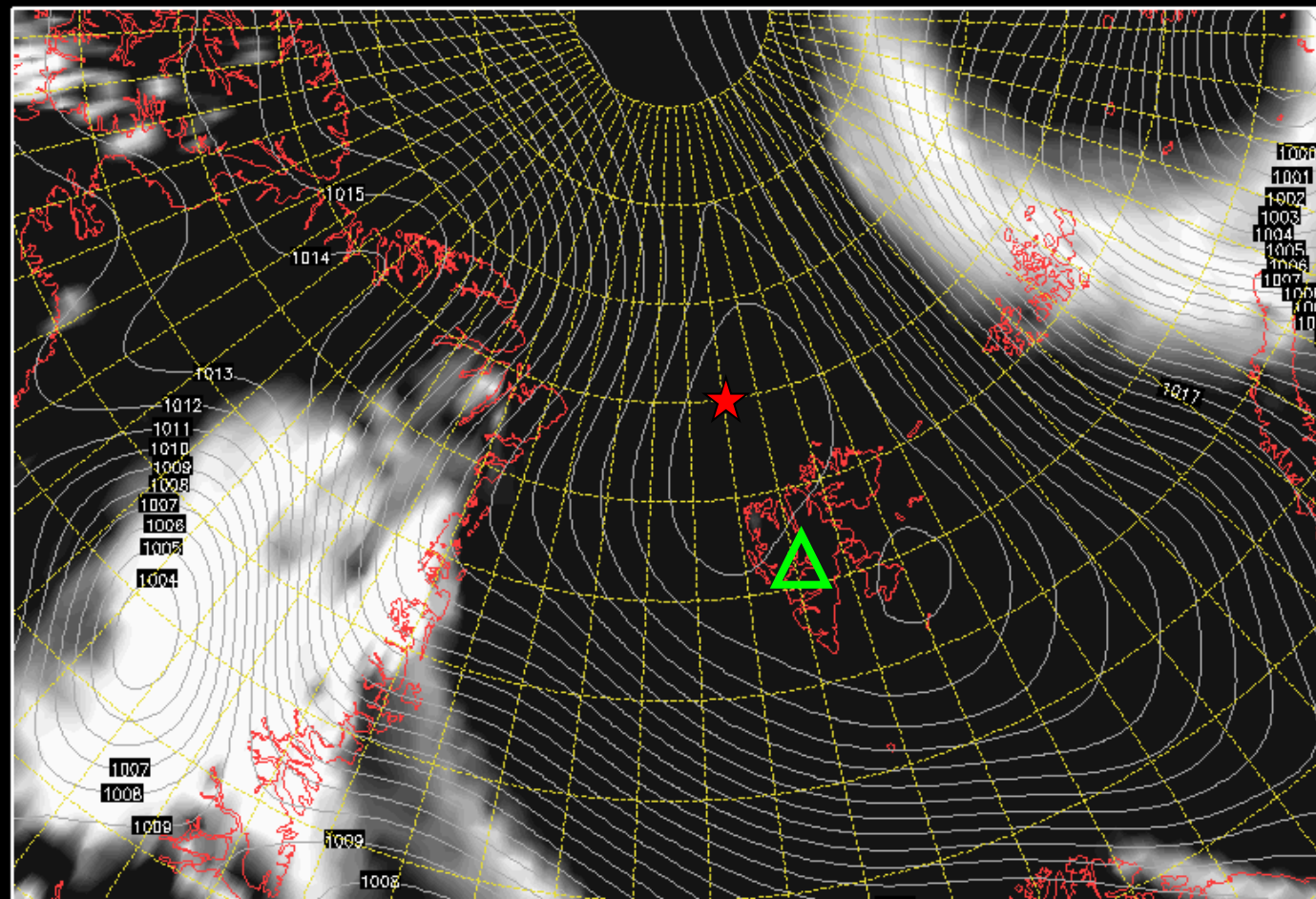
★ RV Polarstern (81.94° N, 10.92° E)



★ RV Polarstern (81.94° N, 10.92° E)

Valid: Fri,09JUN2017 12Z

Bodendruck, Mittelhohe Wolken in %

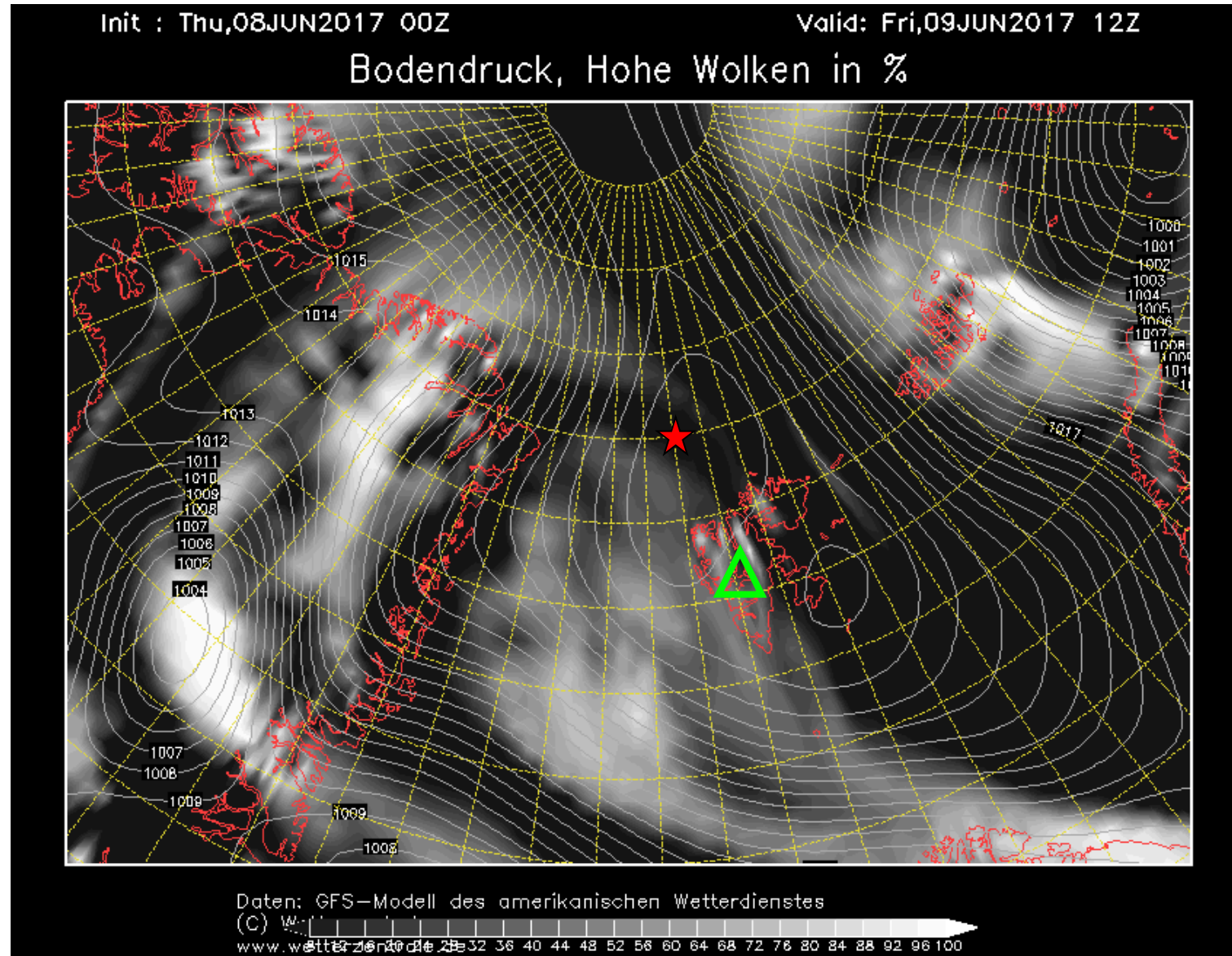


(C) 1997

www.walter-zandl.de 28 32 36 40 44 48 52 56 60 64 68 72 76 80 84 88 92 96 100

High-level cloud cover 09 June 2017 @ 12 UTC

★ RV Polarstern (81.94° N, 10.92° E)

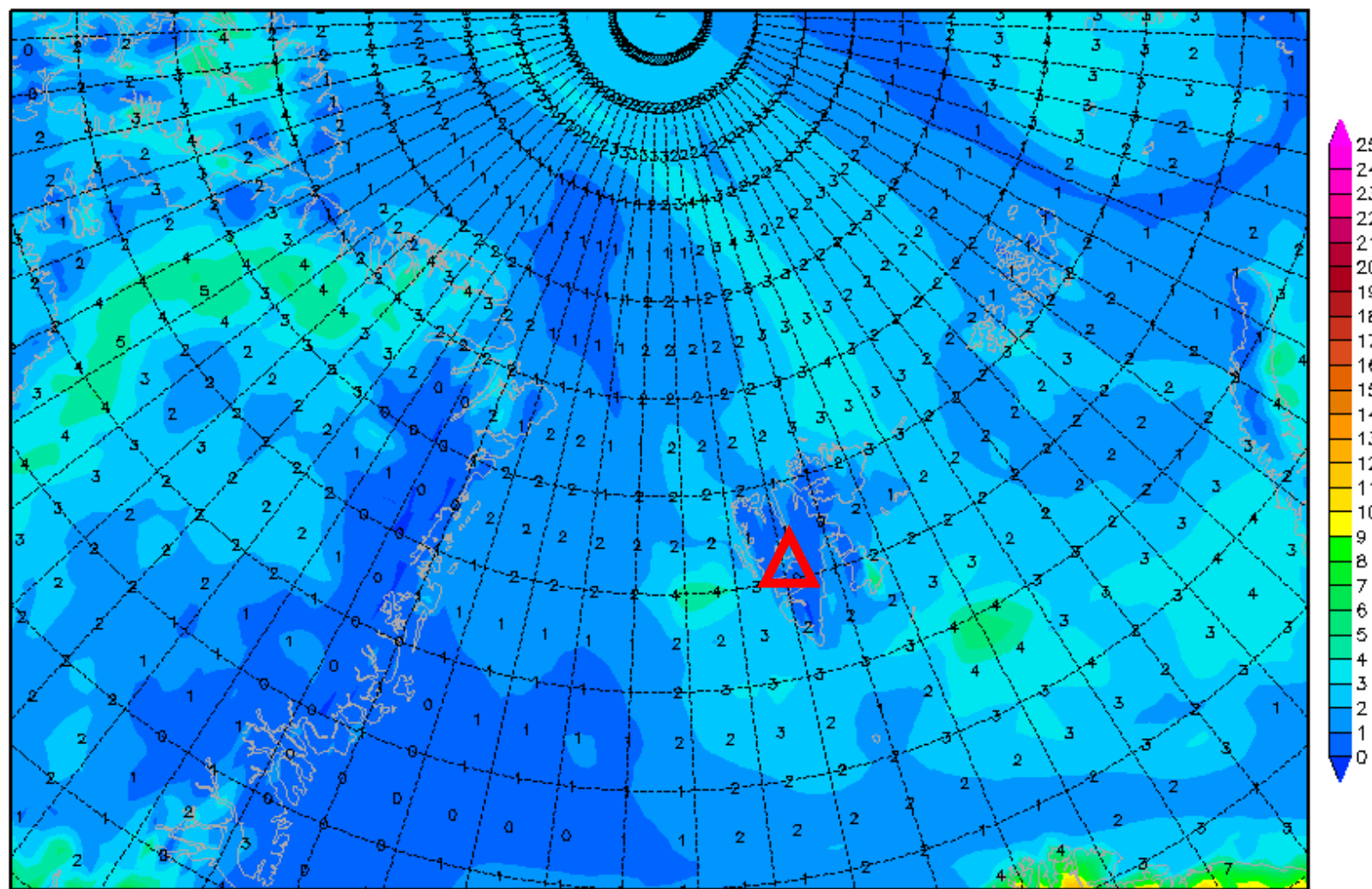


2-m dew point diff. 9 June 2017 @ 12 UTC

Init : Thu,08JUN2017 00Z

Valid: Fri,09JUN2017 12Z

2m (Temperatur-Taupunkt)



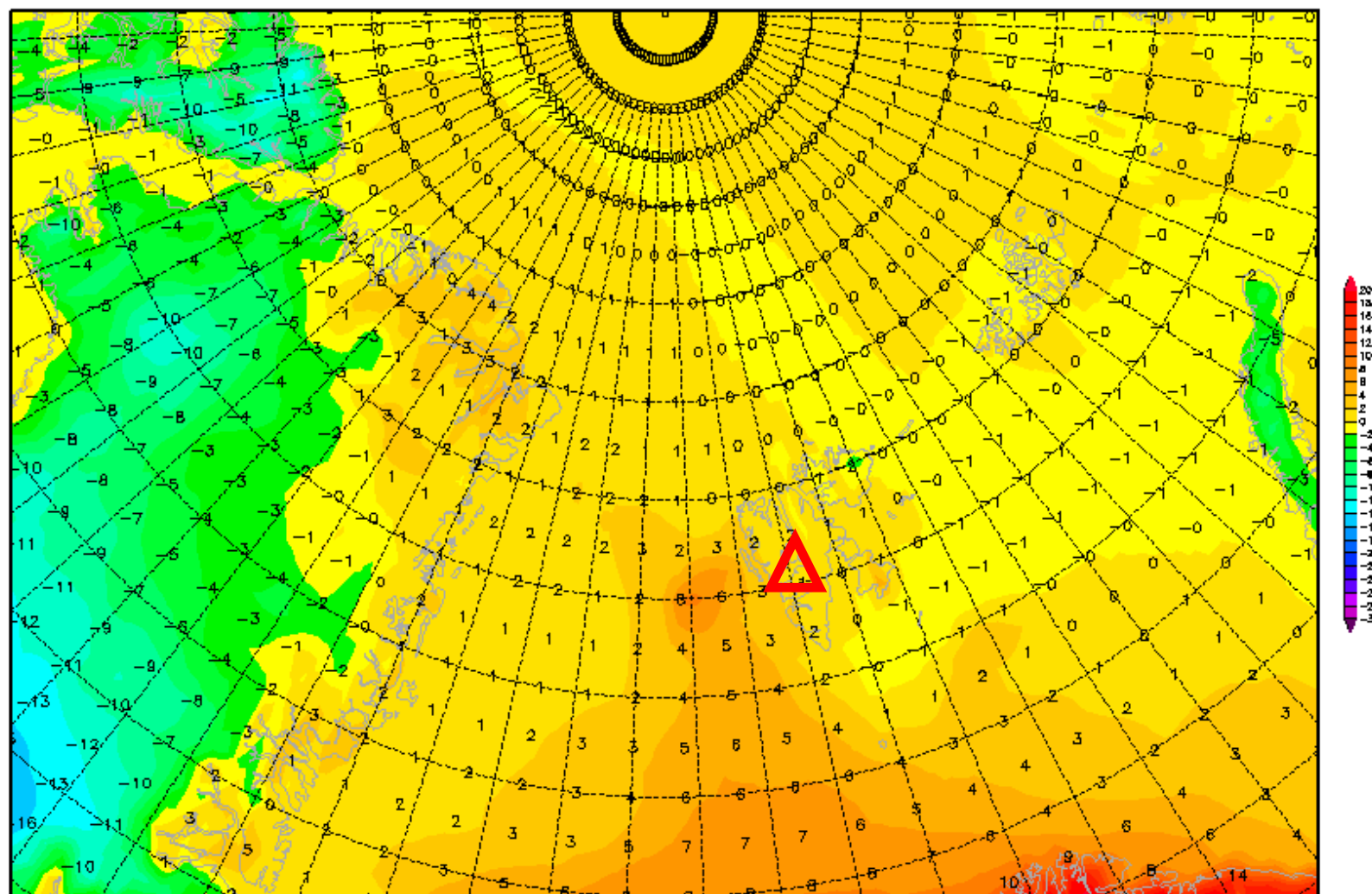
Daten: GFS
(C) Wetterzentrale
www.wetterzentrale.de

2-m temperature 9 June 2017 @ 12 UTC

Init : Thu,08JUN2017 00Z

Valid: Fri,09JUN2017 12Z

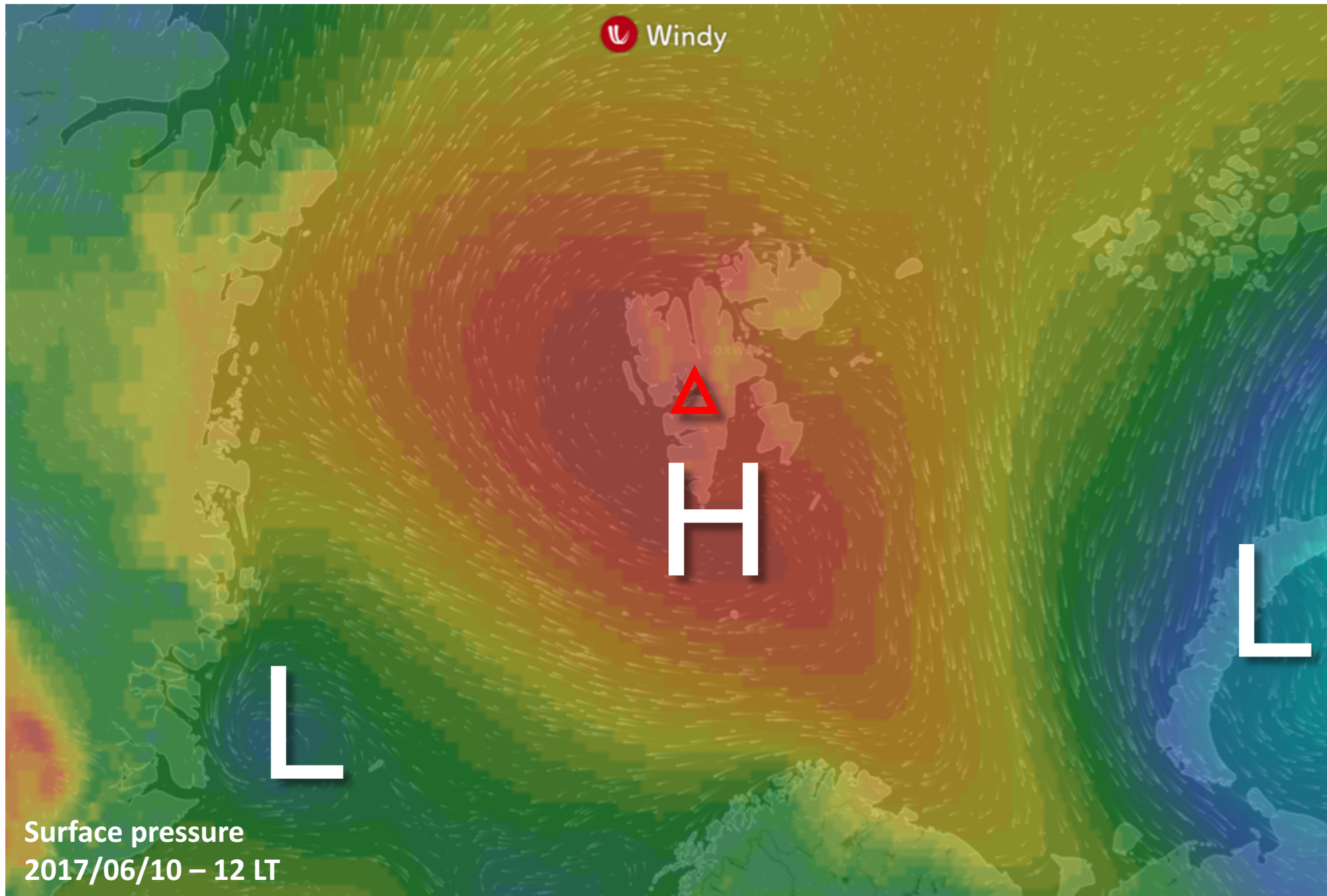
2m Temperatur (°C)



Outlook

Sat 10 June – Mon 12 June 2017

General Situation Sat 10 June 2017

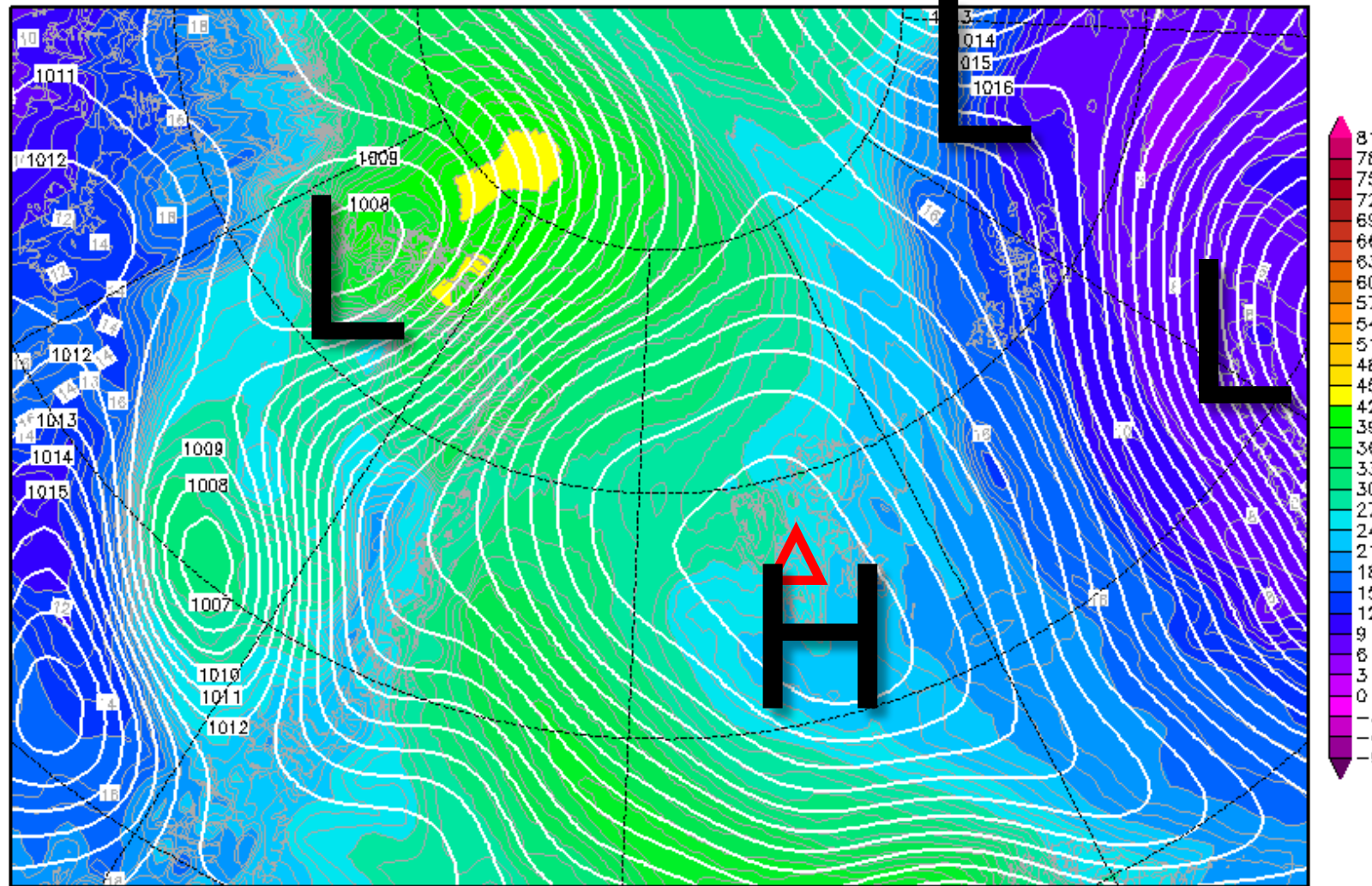


850-hPa Theta Equiv. 10 June 2017 @ 12 UTC

Init : Thu,08JUN2017 00Z

Valid: Sat,10JUN2017 12Z

Bodendruck (hPa) und 850 hPa Aeq.Pot.T. (Grad C)



Daten: GFS-Modell des amerikanischen Wetterdienstes

(C) Wetterzentrale

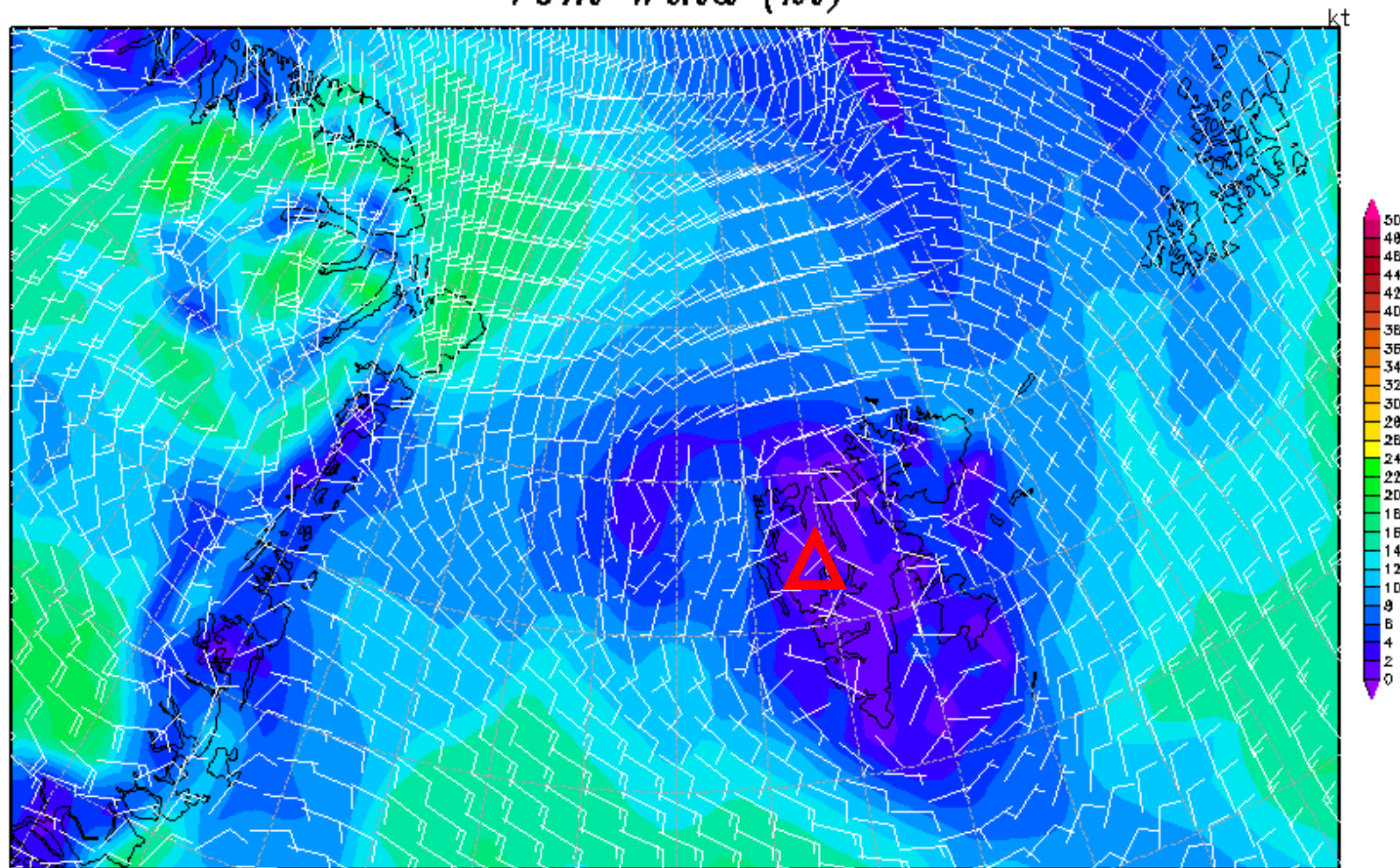
www.wetterzentrale.de

10m wind 10 June 2017 @ 12 UTC

Init : Thu,08JUN2017 00Z

Valid: Sat,10JUN2017 12Z

10m Wind (kt)

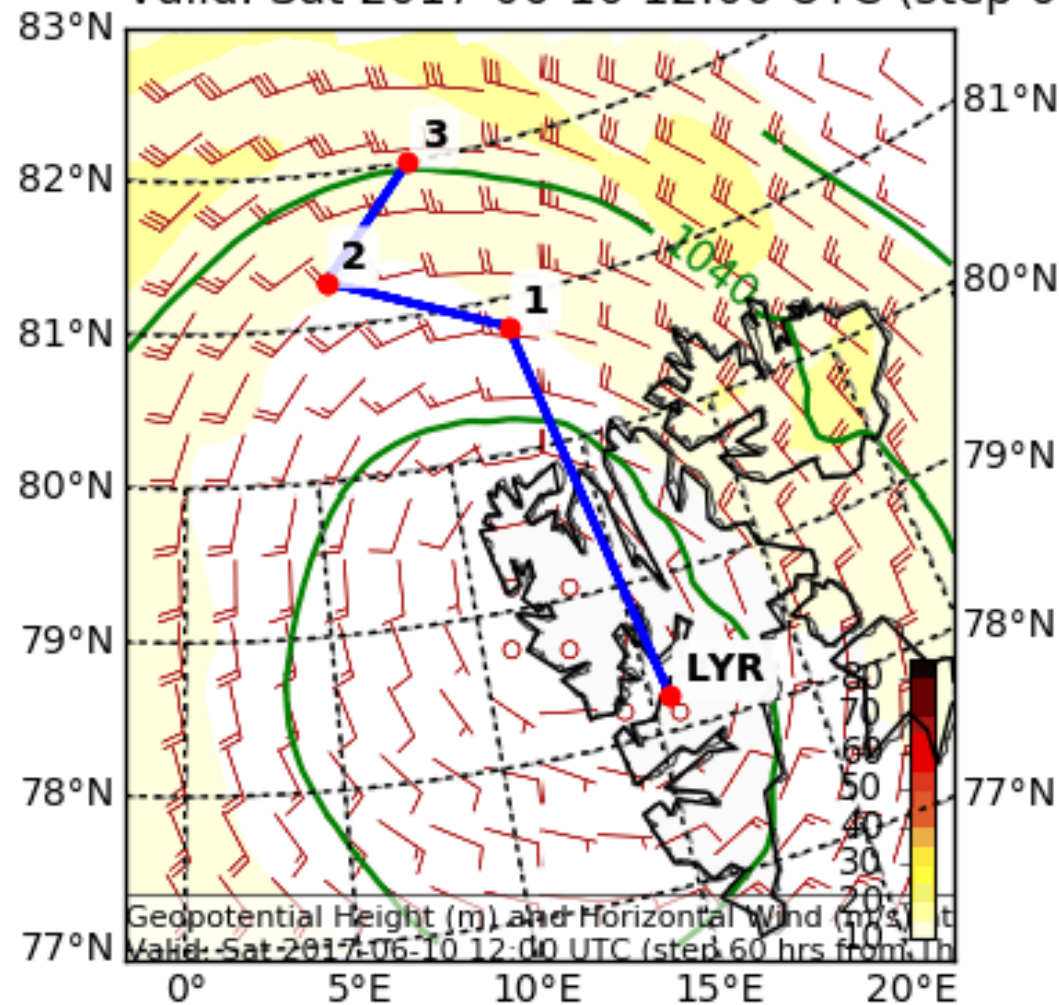


Daten: GFS-Modell des amerikanischen Wetterdienstes
(C) Wetterzentrale
www.wetterzentrale.de

Wind

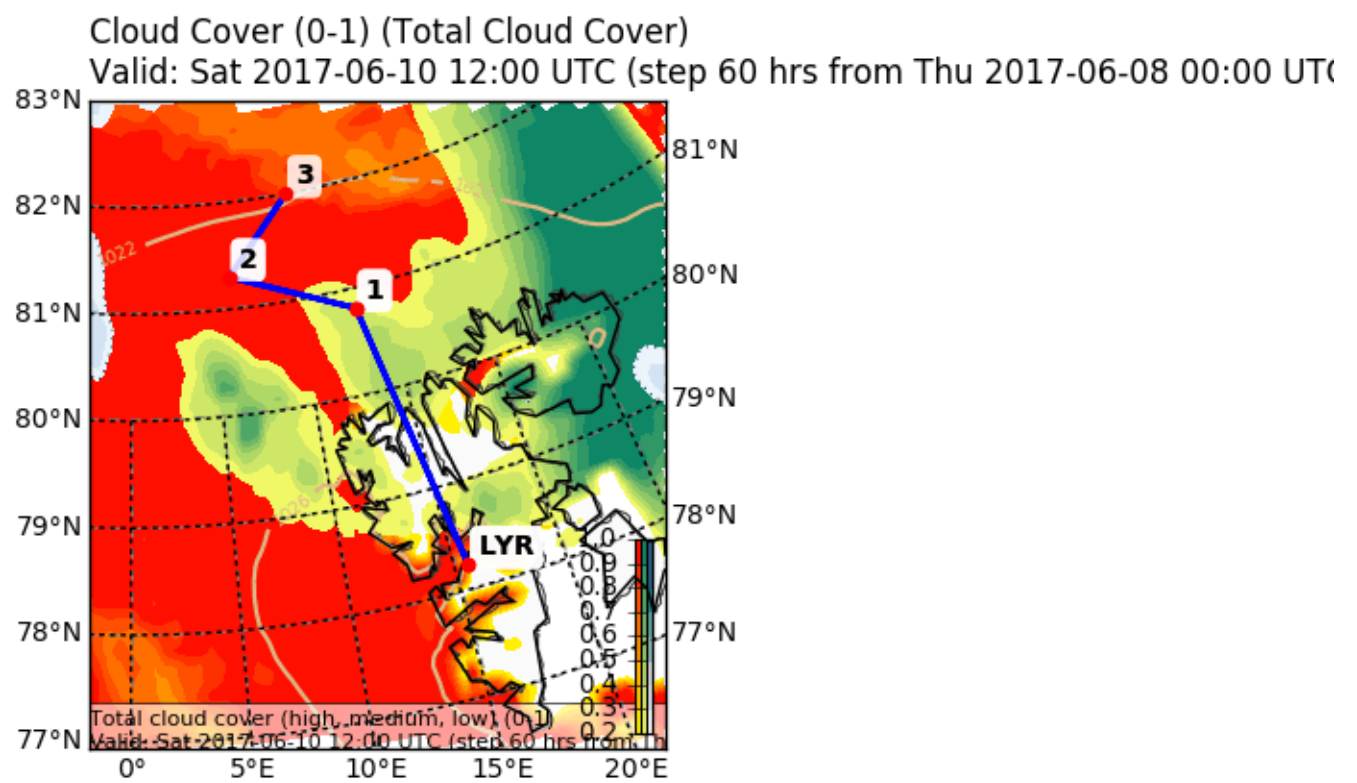
Friday 12 UTC

Geopotential Height (m) and Horizontal Wind (m/s) (Wind Speed 10-85 m/s) at
Valid: Sat 2017-06-10 12:00 UTC (step 60 hrs from Thu 2017-06-08 00:00 UTC)

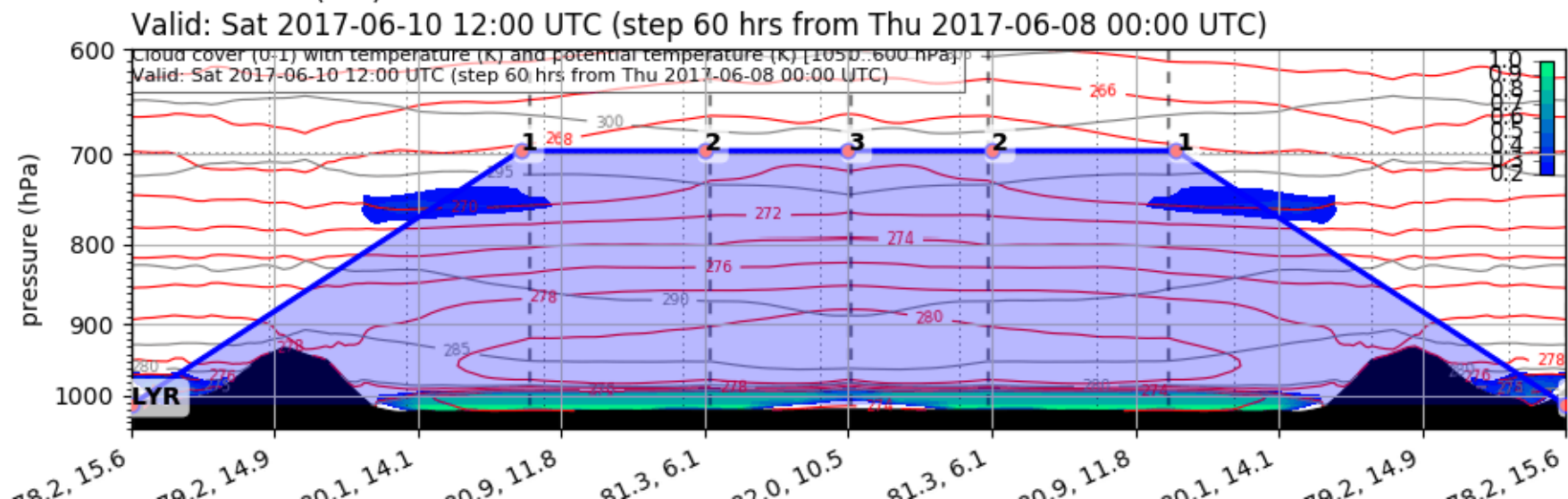


Forecast

Saturday 06 UTC

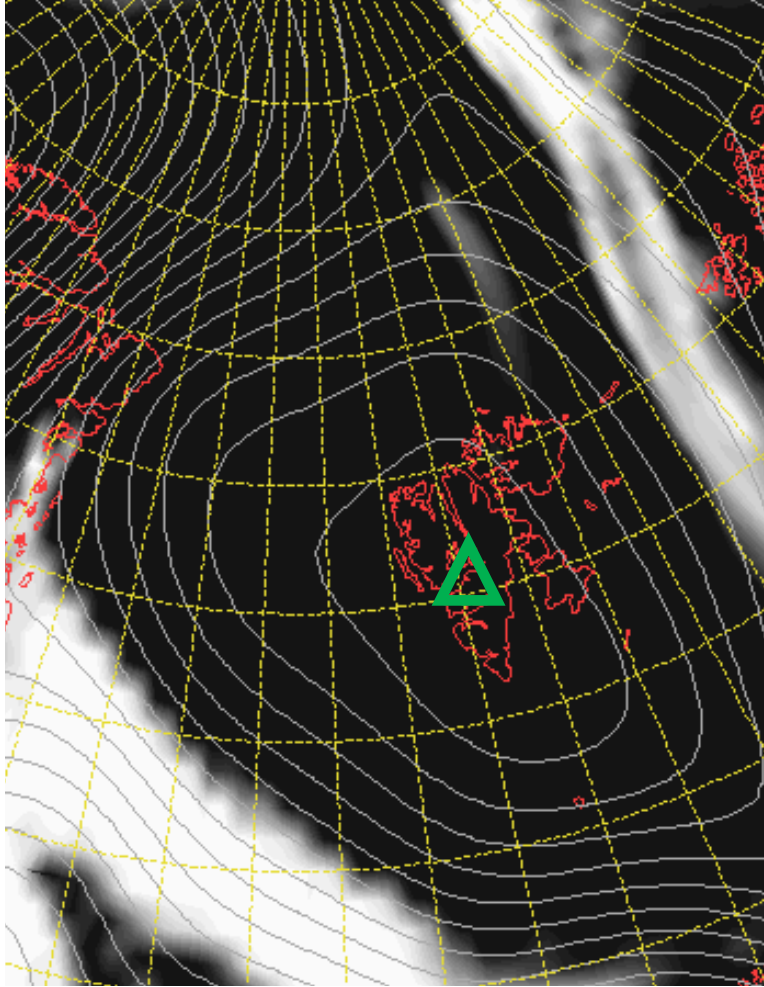


EPSG:77790000

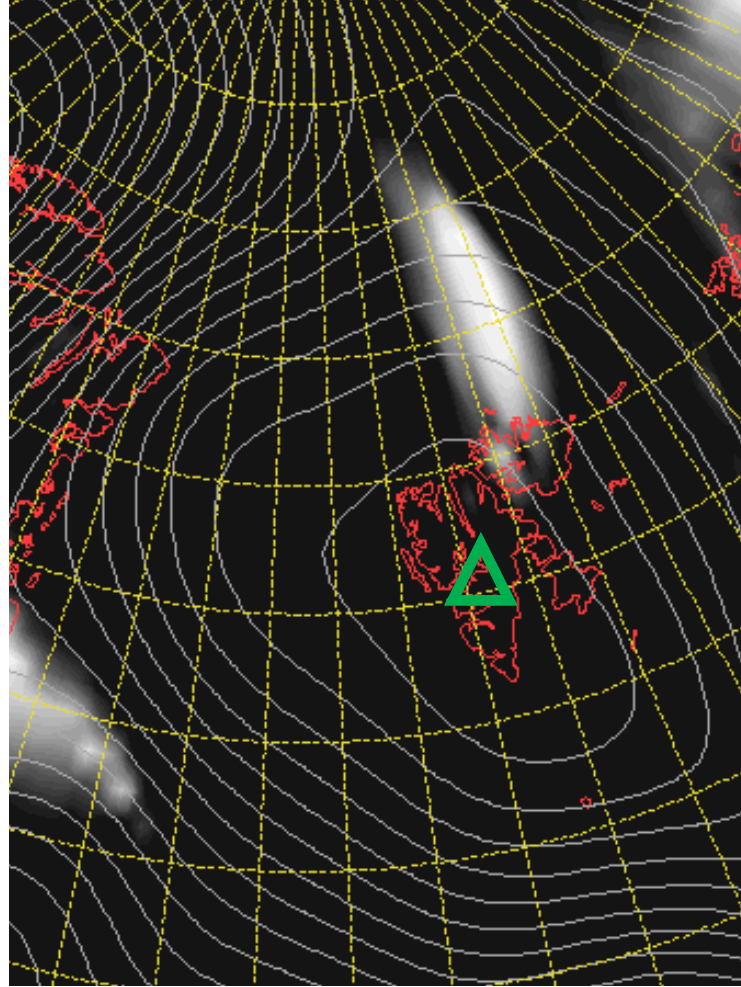


Cloud Cover 10 June 2017 @ 12 UTC

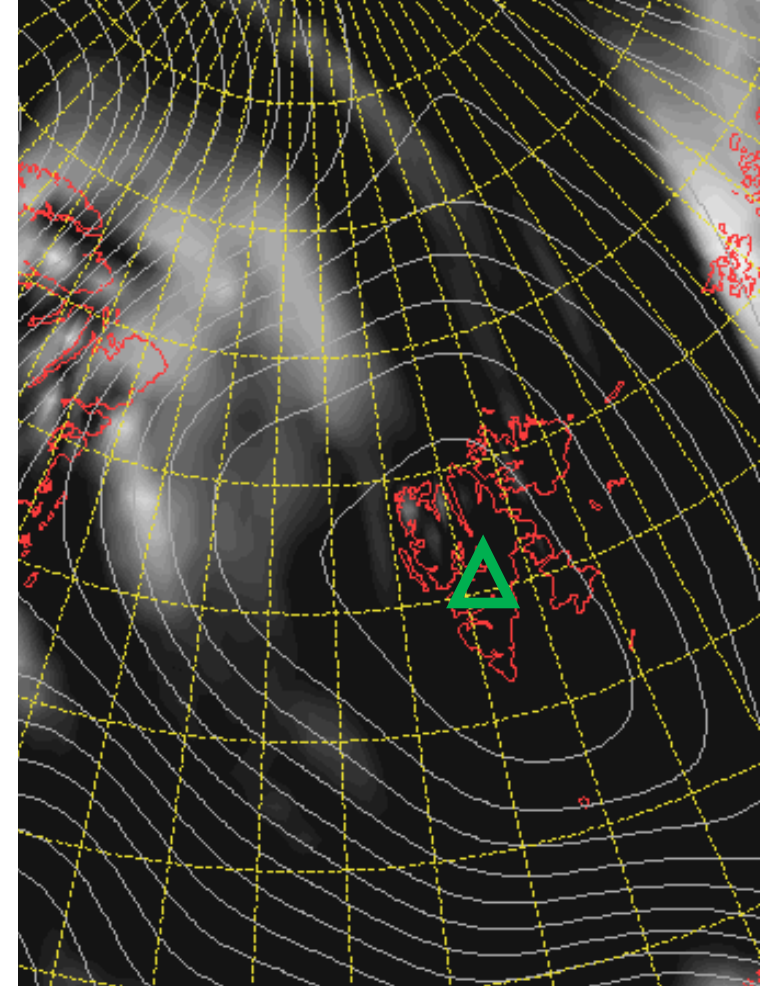
L



M



H

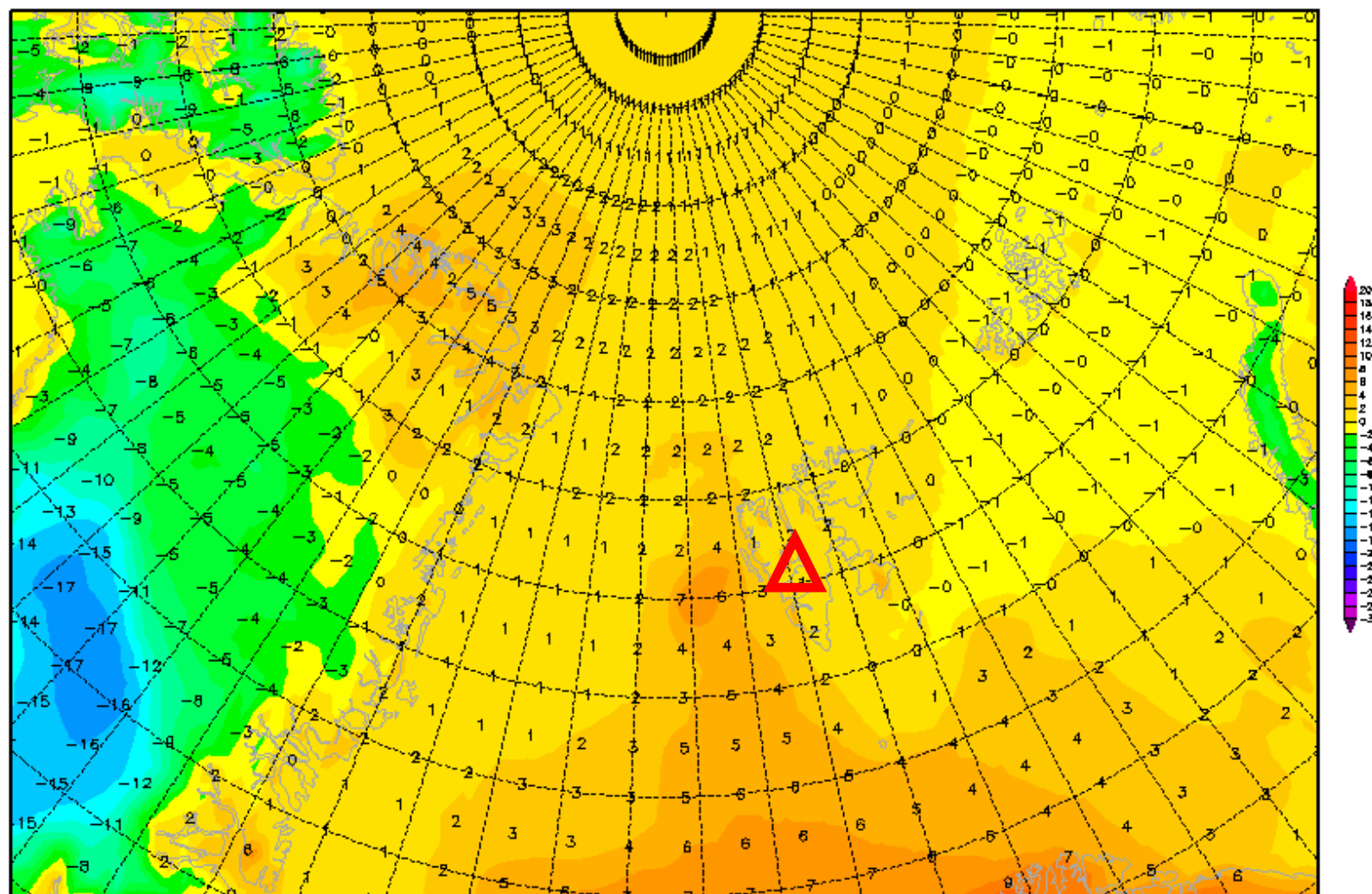


2-m temperature 10 June 2017 @ 12 UTC

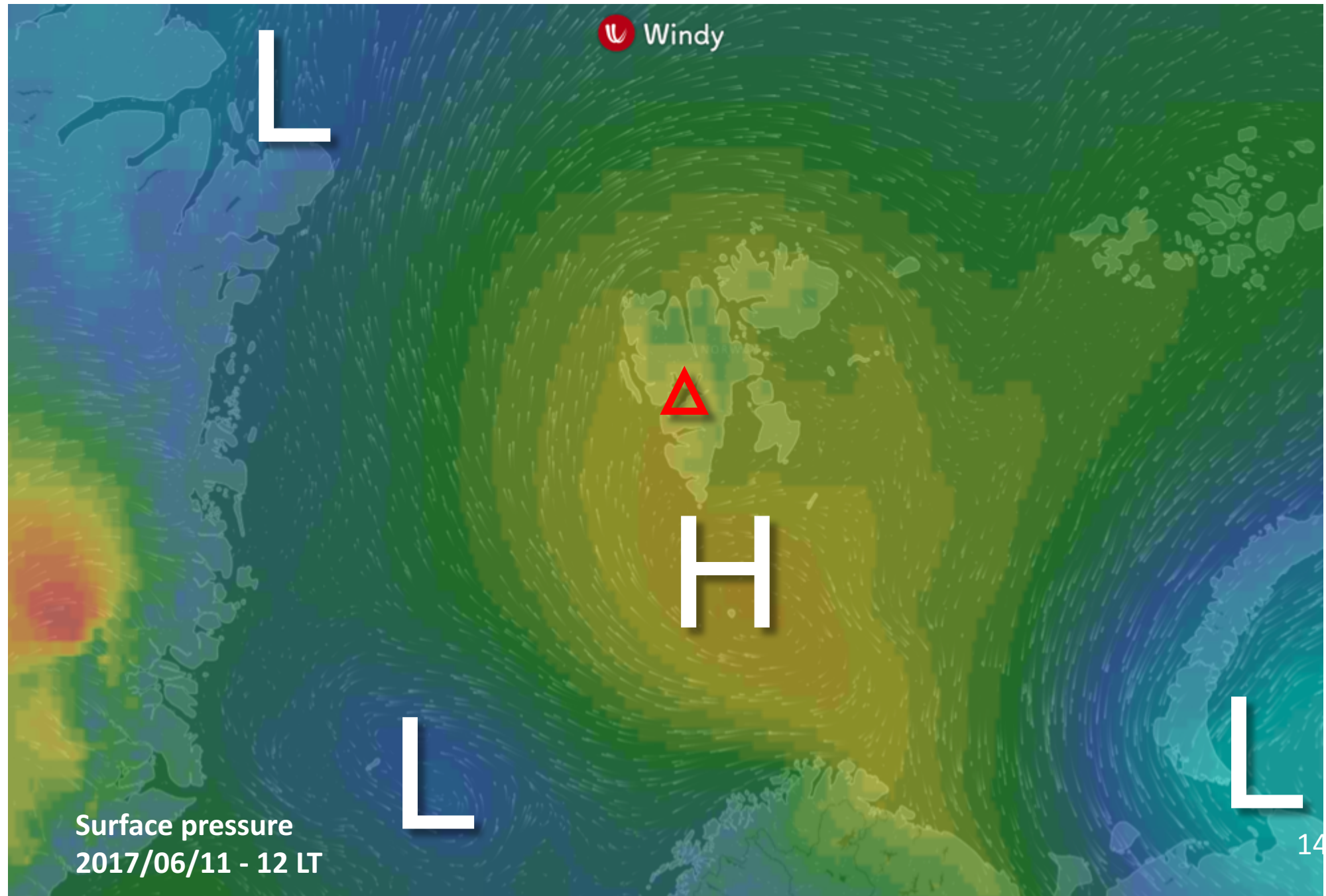
Init : Thu,08JUN2017 00Z

Valid: Sat,10JUN2017 12Z

2m Temperatur (°C)

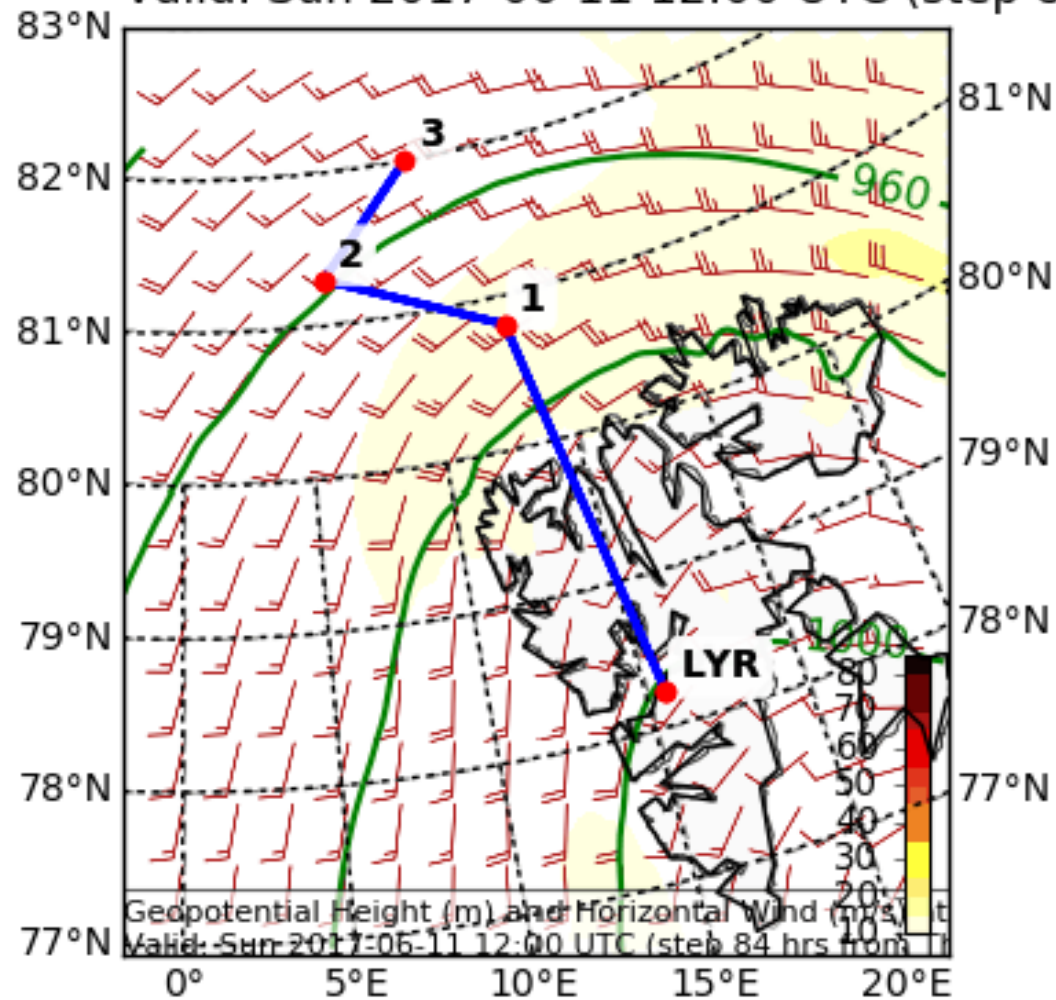


General Situation Sun 11 June 2017



Wind, Sunday12 UTC

Geopotential Height (m) and Horizontal Wind (m/s) (Wind Speed 10-85 m/s) a
Valid: Sun 2017-06-11 12:00 UTC (step 84 hrs from Thu 2017-06-08 00:00 UT

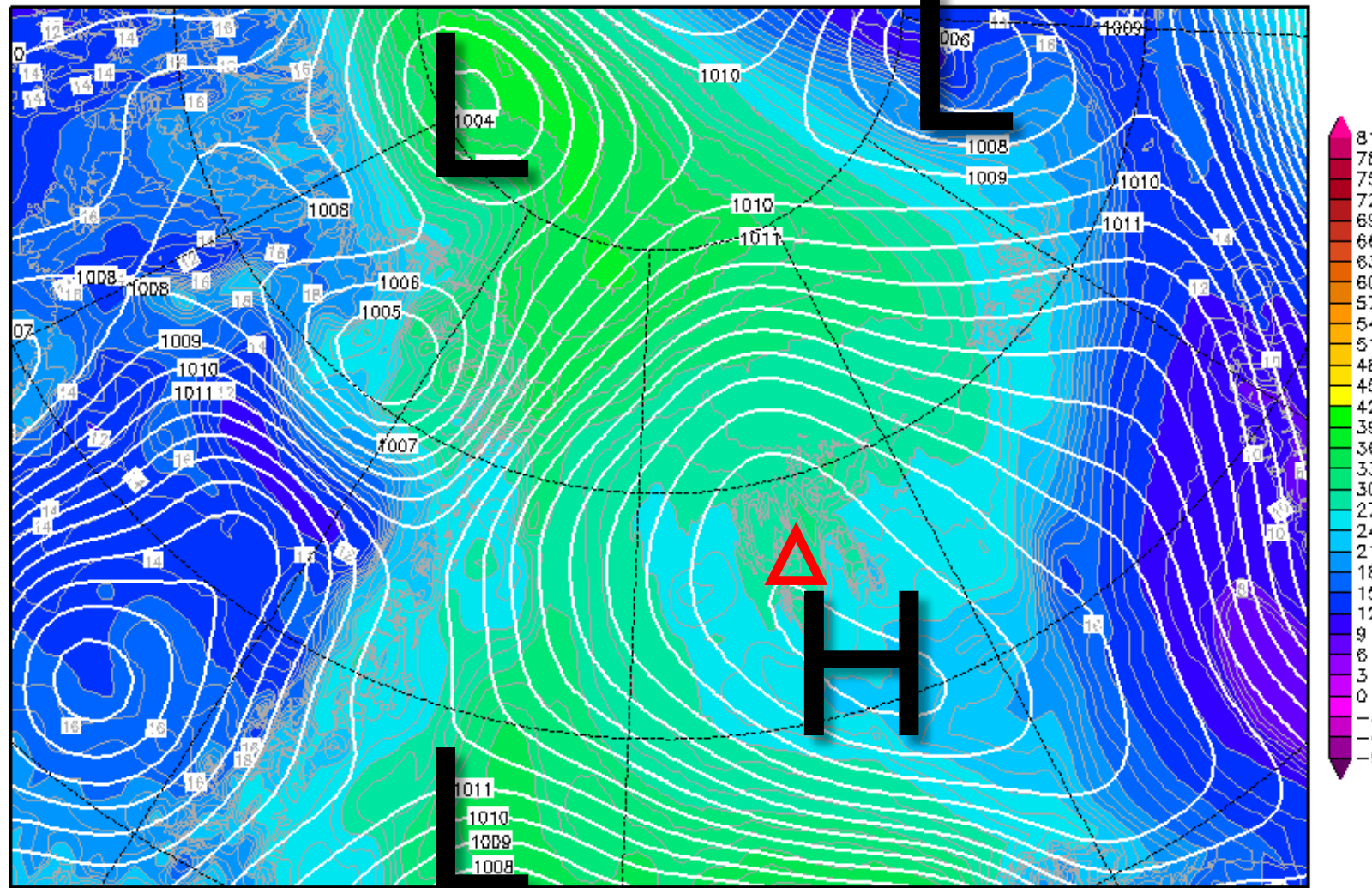


850-hPa Theta Equiv. 11 June 2017 @ 12 UTC

Init : Thu,08JUN2017 00Z

Valid: Sun,11JUN2017 12Z

Bodendruck (hPa) und 850 hPa Aeq.Pot.T. (Grad C)



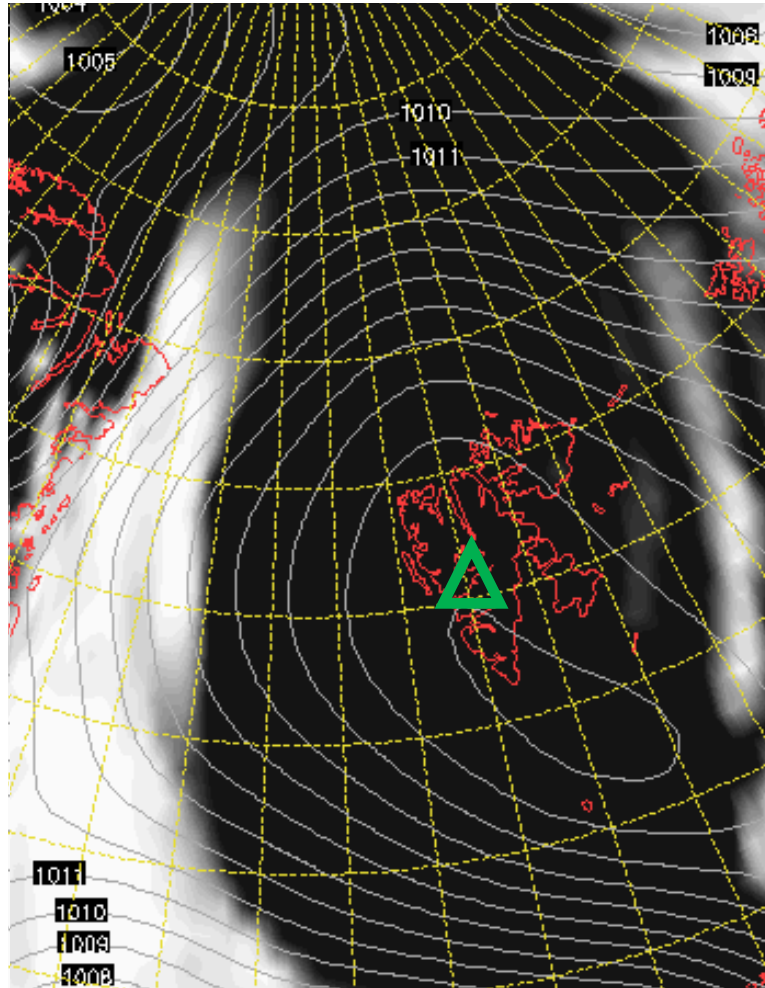
Daten: GFS-Modell des amerikanischen Wetterdienstes

(C) Wetterzentrale

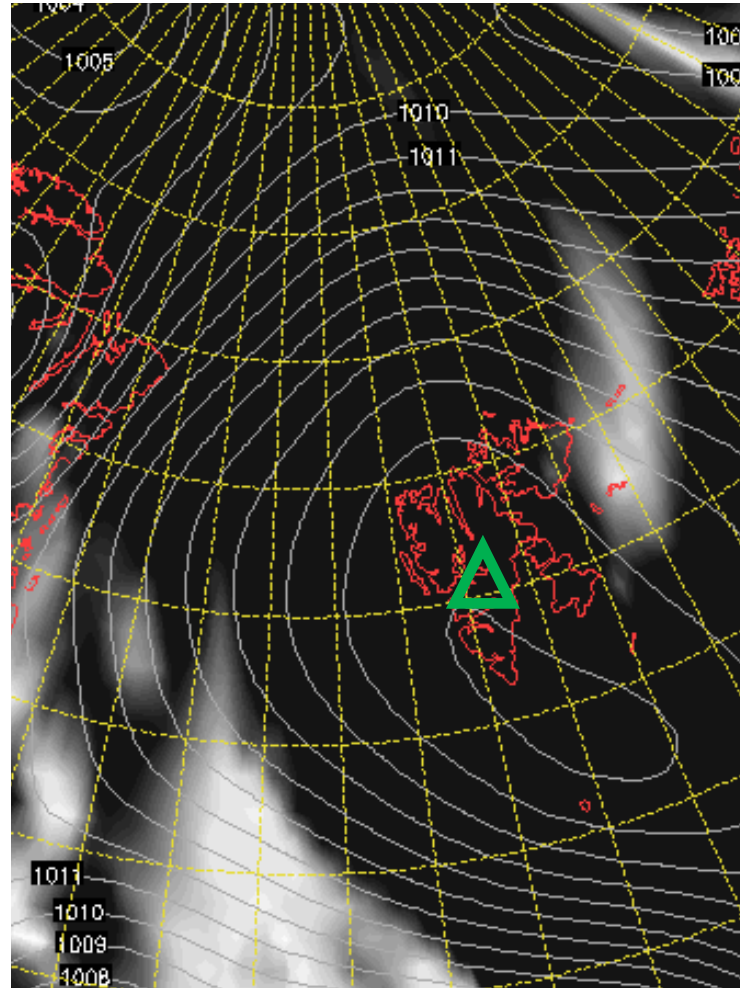
www.wetterzentrale.de

Cloud Cover 11 June 2017 @ 12 UTC

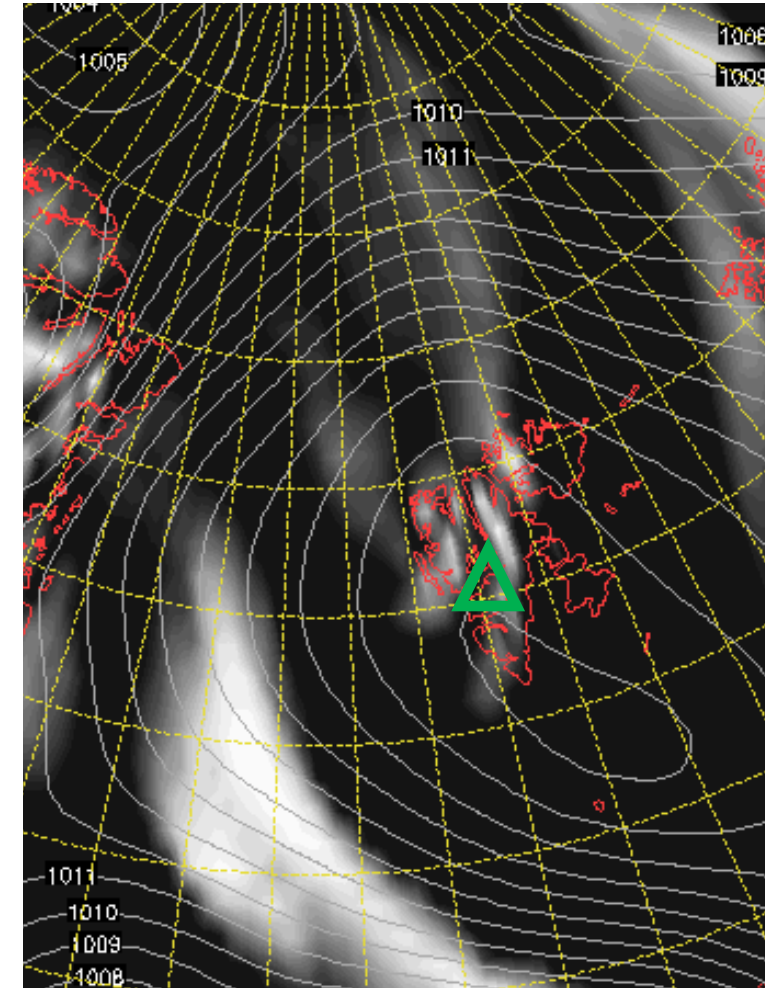
L



M



H

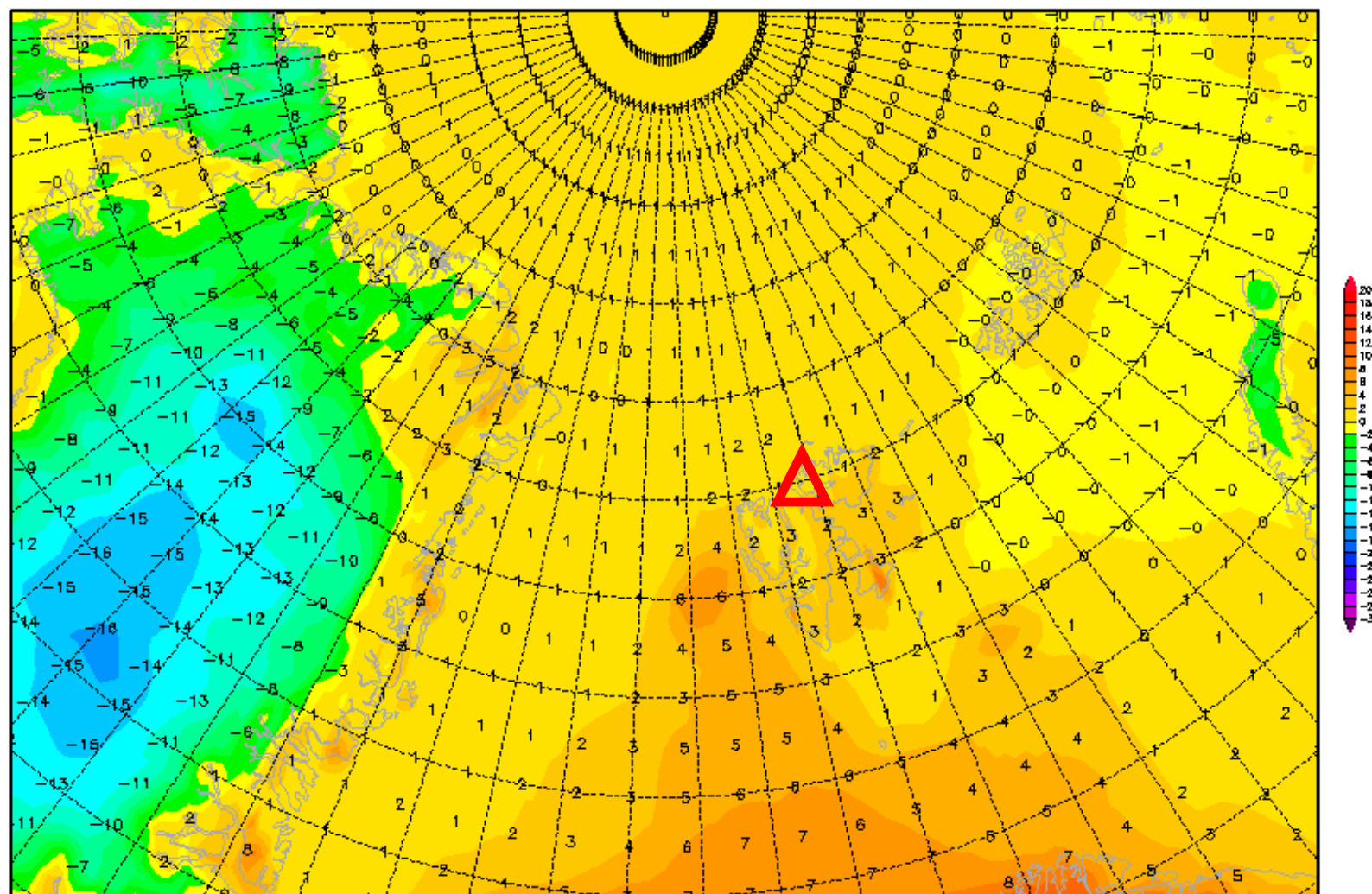


2-m temperature 11 June 2017 @ 12 UTC

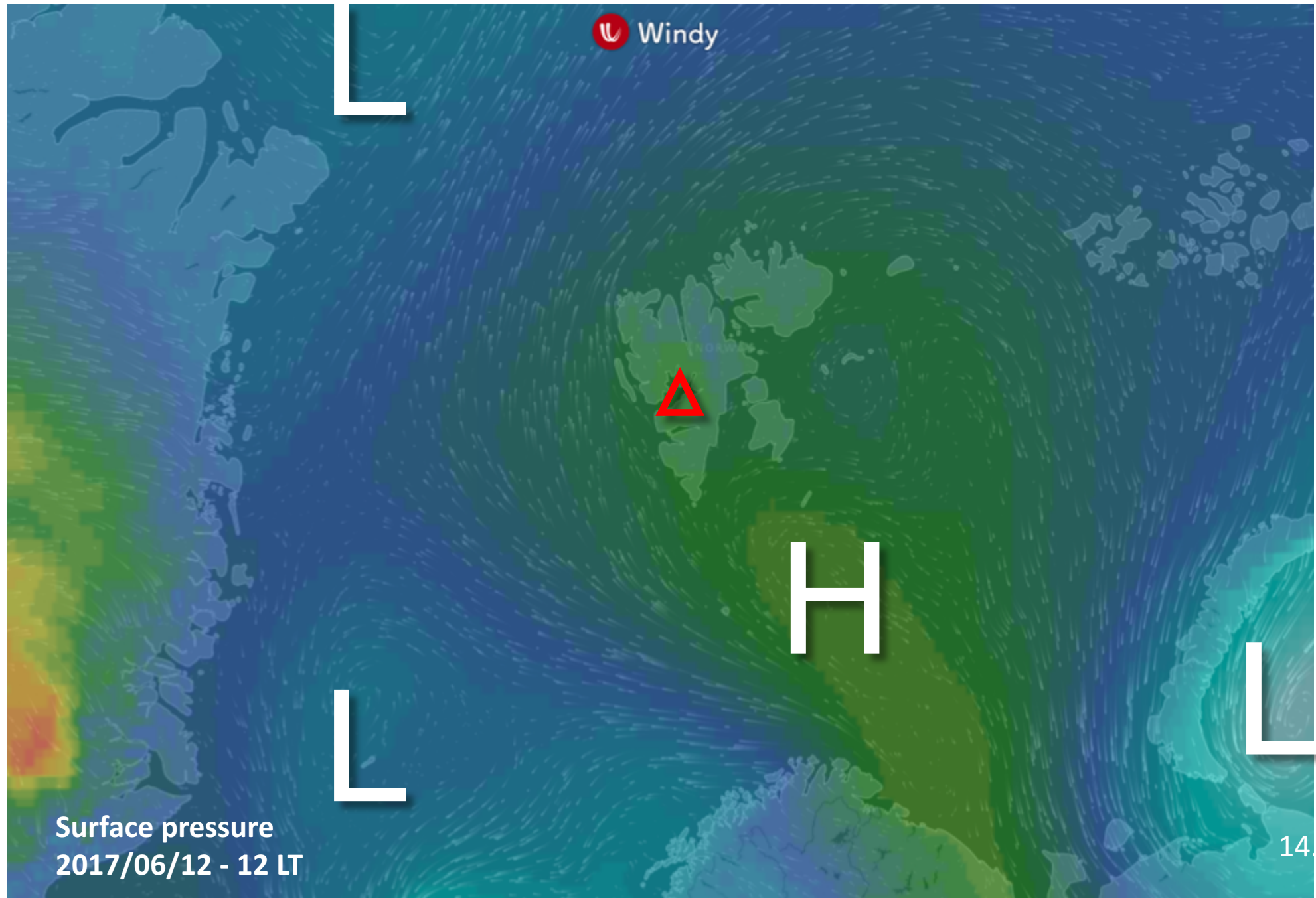
Init : Thu,08JUN2017 00Z

Valid: Sun,11JUN2017 12Z

2m Temperatur (°C)



General Situation Mon 12 June 2017

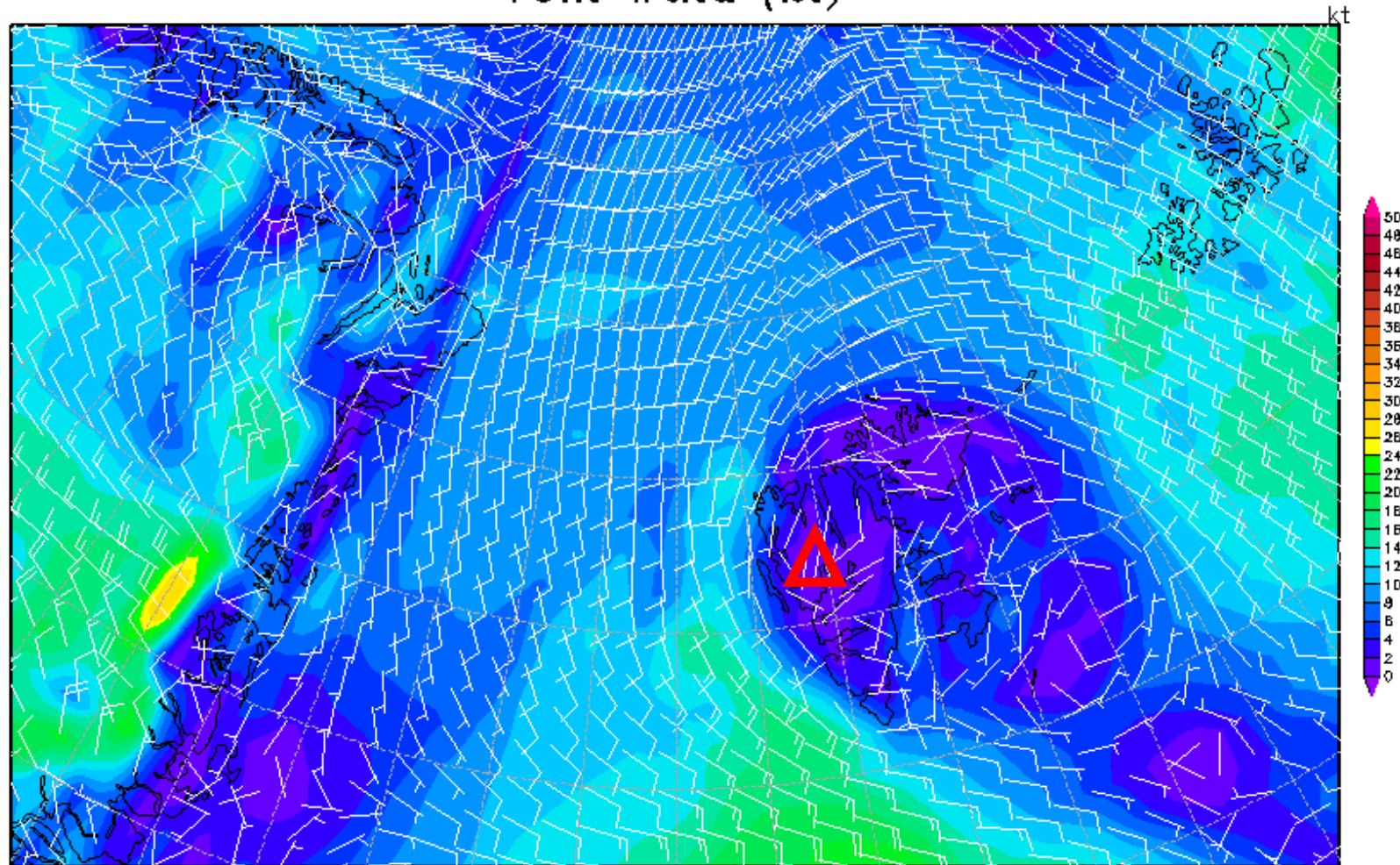


10m wind 12 June 2017 @ 12 UTC

Init : Thu,08JUN2017 00Z

Valid: Mon,12JUN2017 12Z

10m Wind (kt)



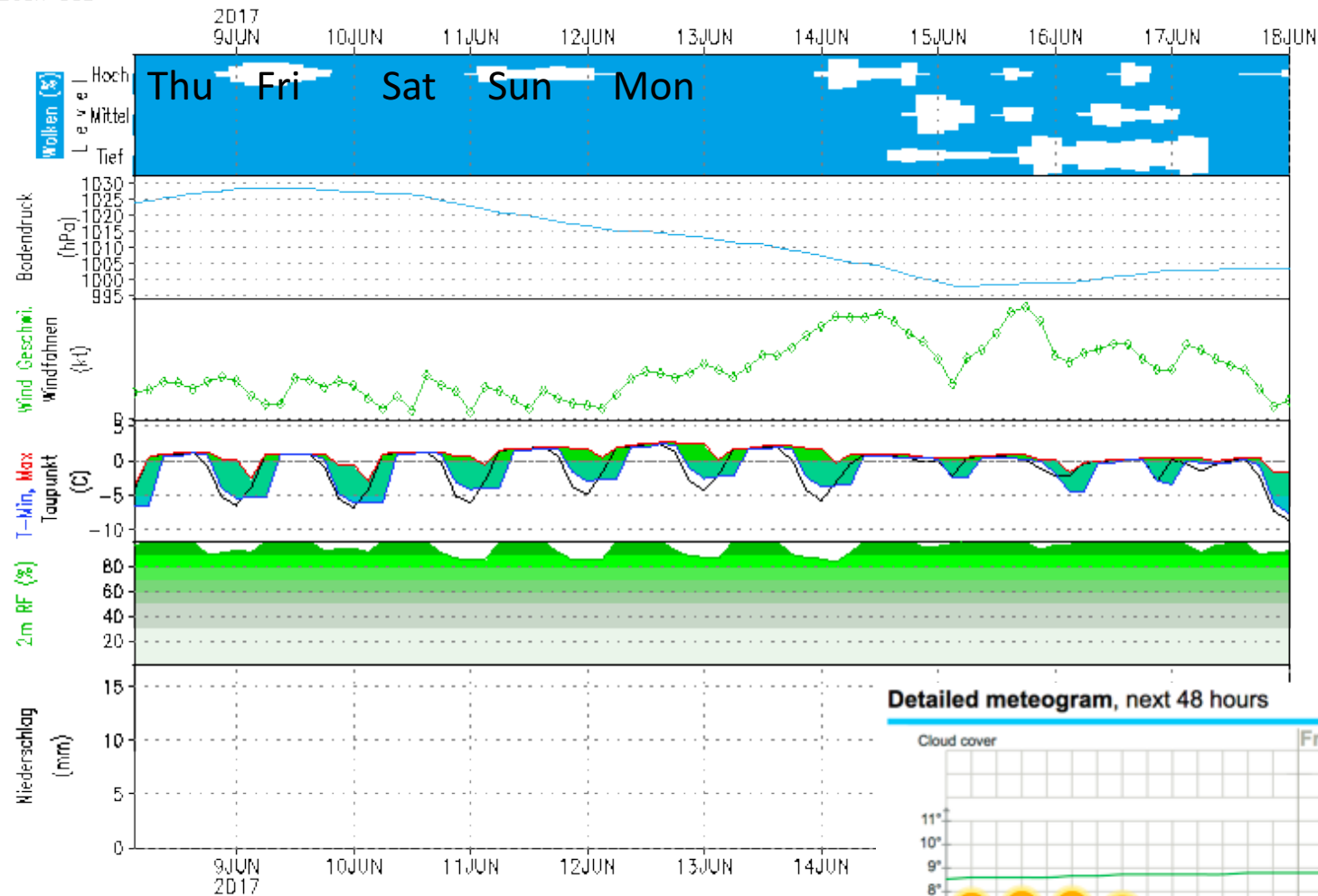
Daten: GFS-Modell des amerikanischen Wetterdienstes
(C) Wetterzentrale
www.wetterzentrale.de

GFS – Meteogramm

Lon: 15.63 Lat: 78.22 Hgt: 331m

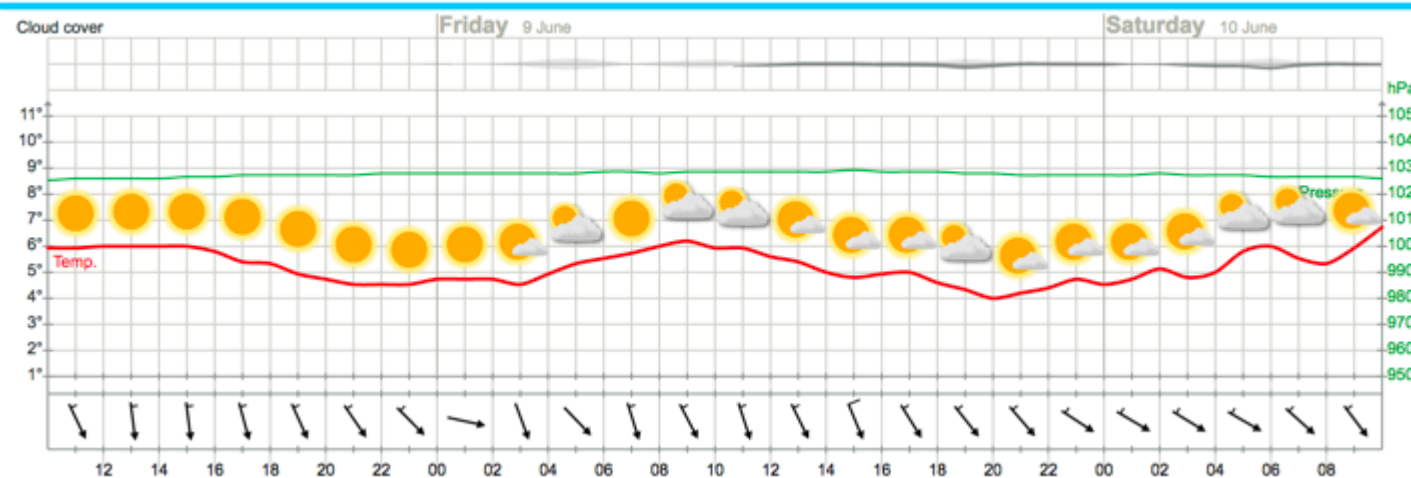
Lauf: 00Z

Outlook – Meteogram



Heute kein Sonnenaufgang
Heute kein Sonnenuntergang

Detailed meteogram, next 48 hours



YR.no

