

Weather briefing

ACLOUD Longyearbyen, Svalbard

Wed 07 June 2017 – **Thu 08 June** – Sun 11 June 2017

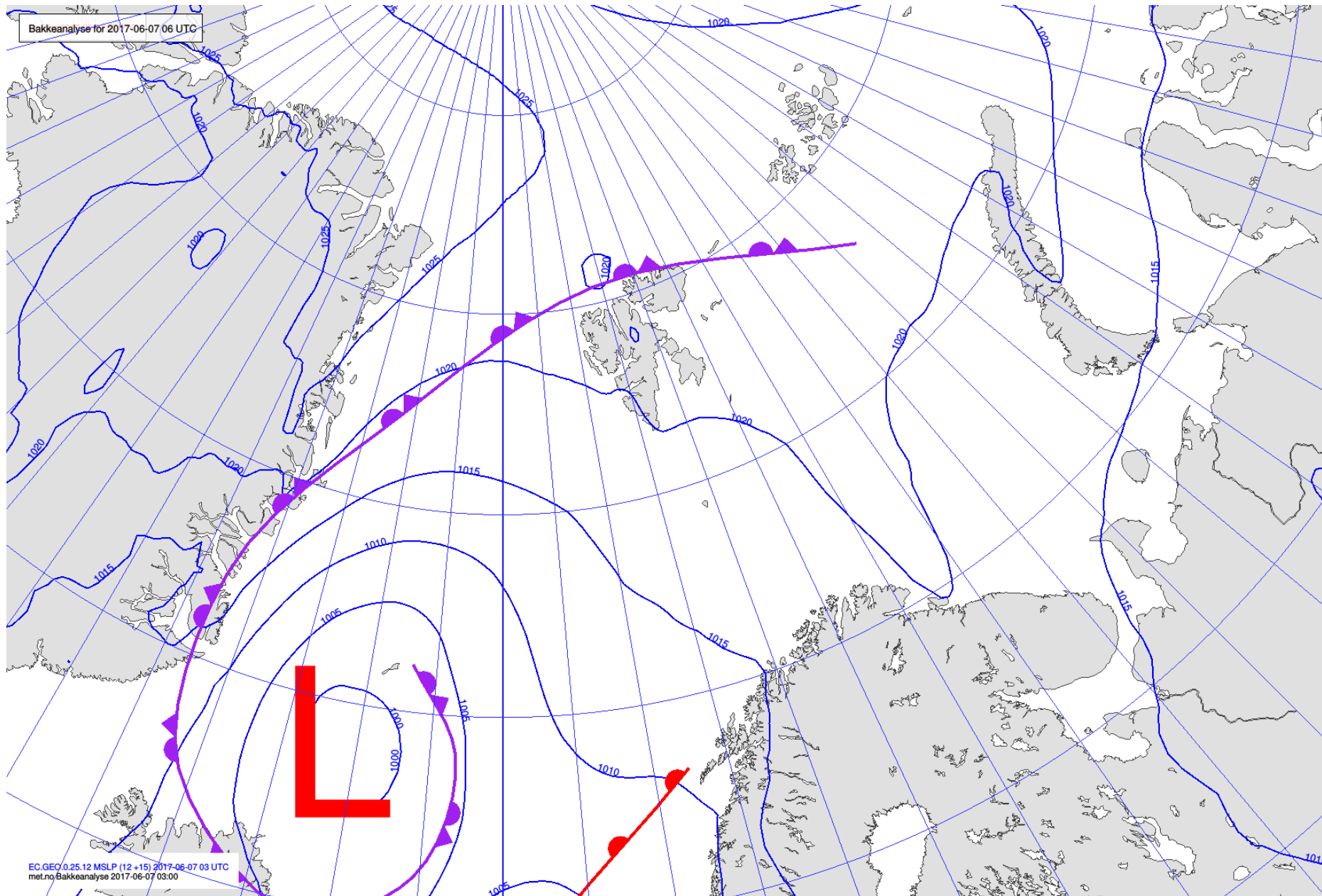
Summary

The front has passed but clouds remain in all levels, with the bottom most layers showing some gaps. A weak ridge over Spitsbergen brings slow wind speeds from changing directions.

Tomorrow the wind stays calm. The middle and high clouds clear up. A layer of broken low clouds can be found to the west and north of the archipelago.

- Position of Polarstern (semi stationary) 81.94° N, 10.92° E

Analysis 07 June 2017 @ 03 UTC

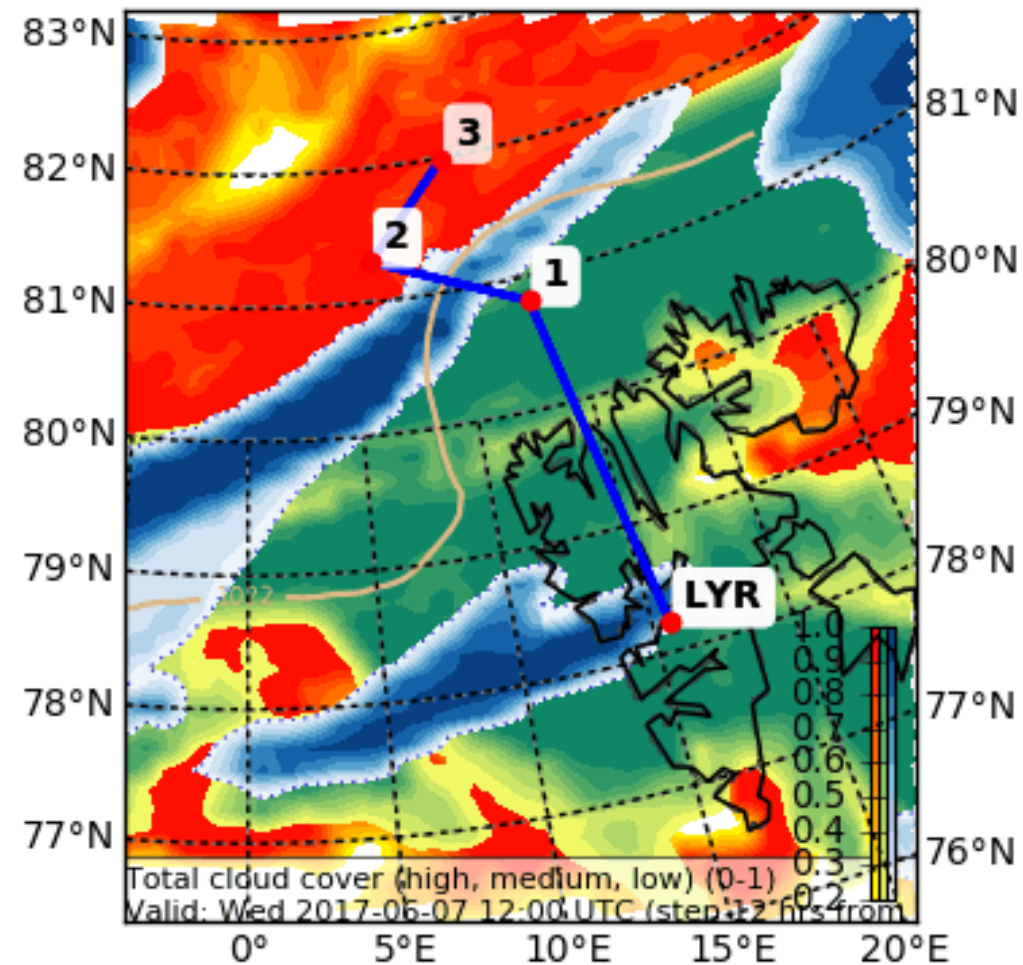


Clouds

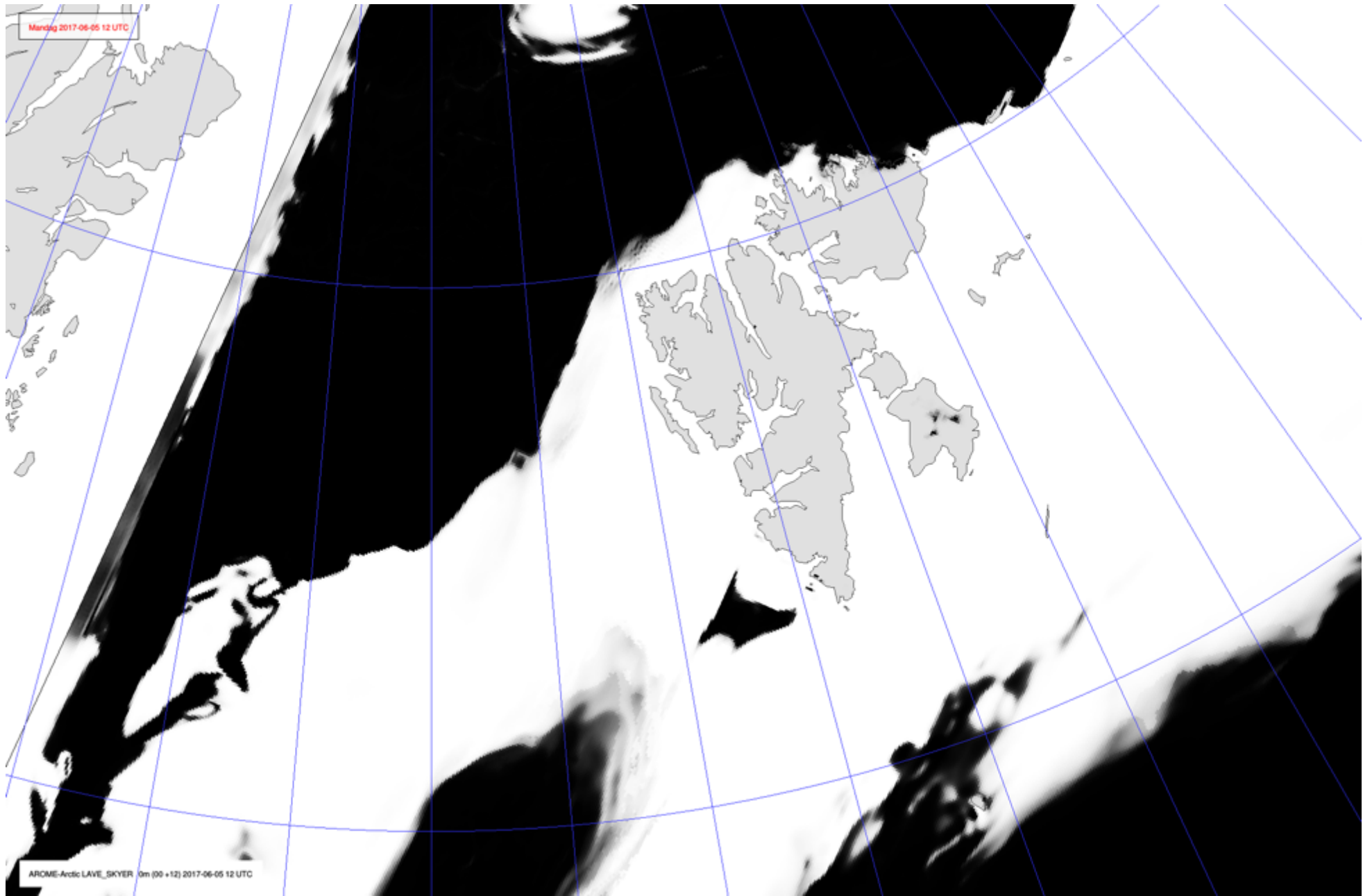
Today 12 UTC

Cloud Cover (0-1) (Total Cloud Cover)

Valid: Wed 2017-06-07 12:00 UTC (step 12 hrs from Wed 2017-06-07 00:00 UTC)



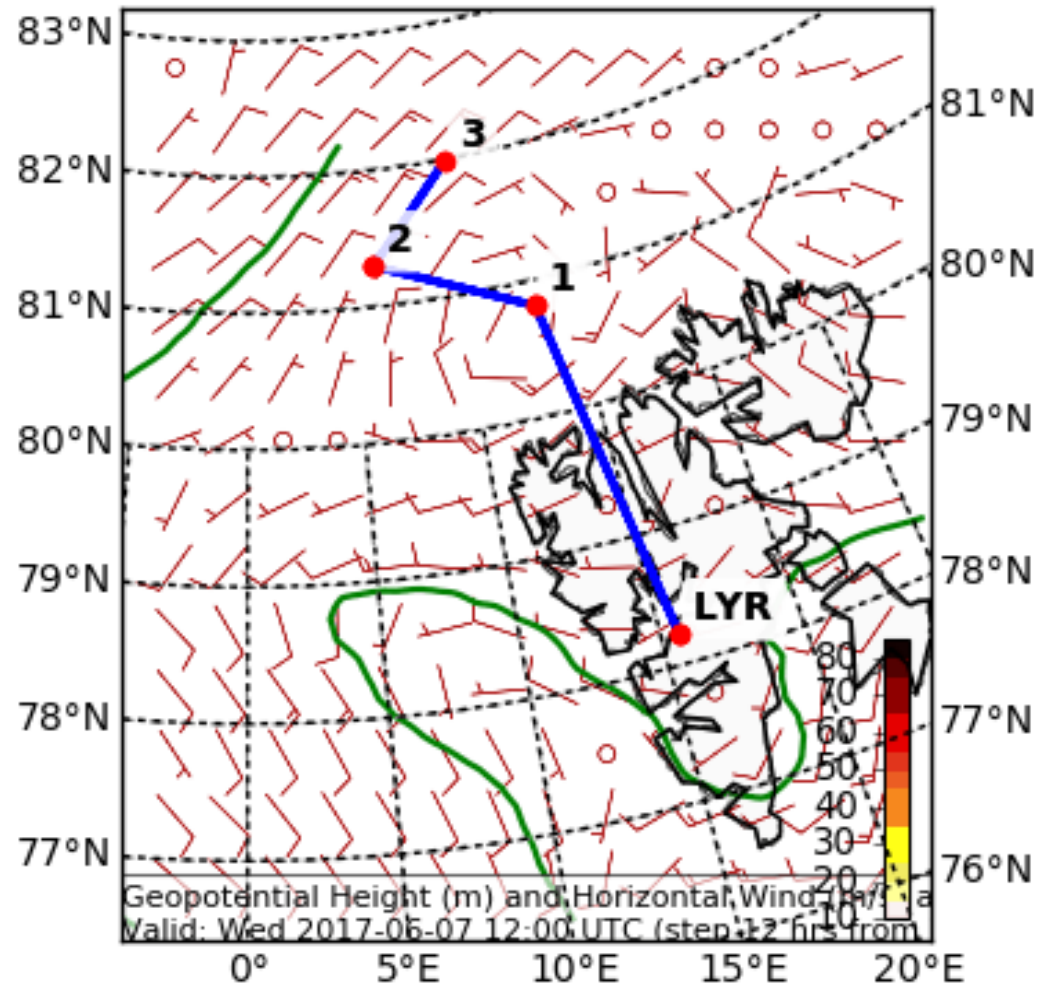
Cloud 07 June 2017 @ 12 UTC



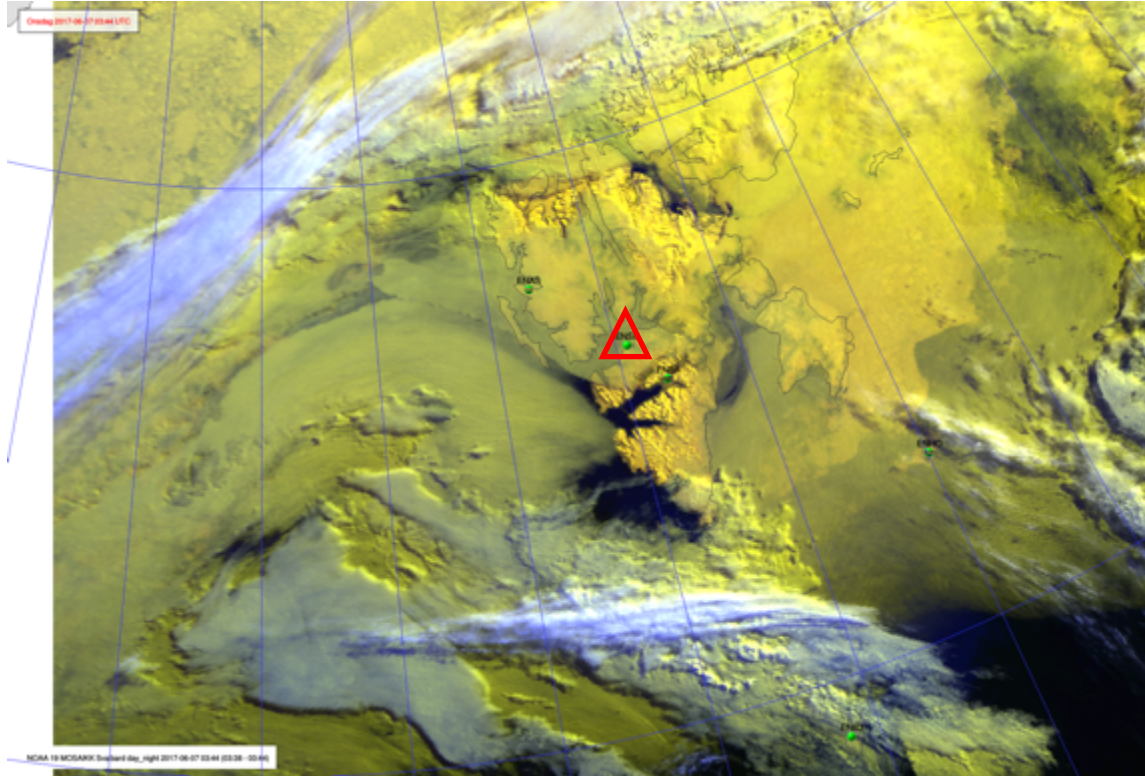
Wind

Today 12 UTC

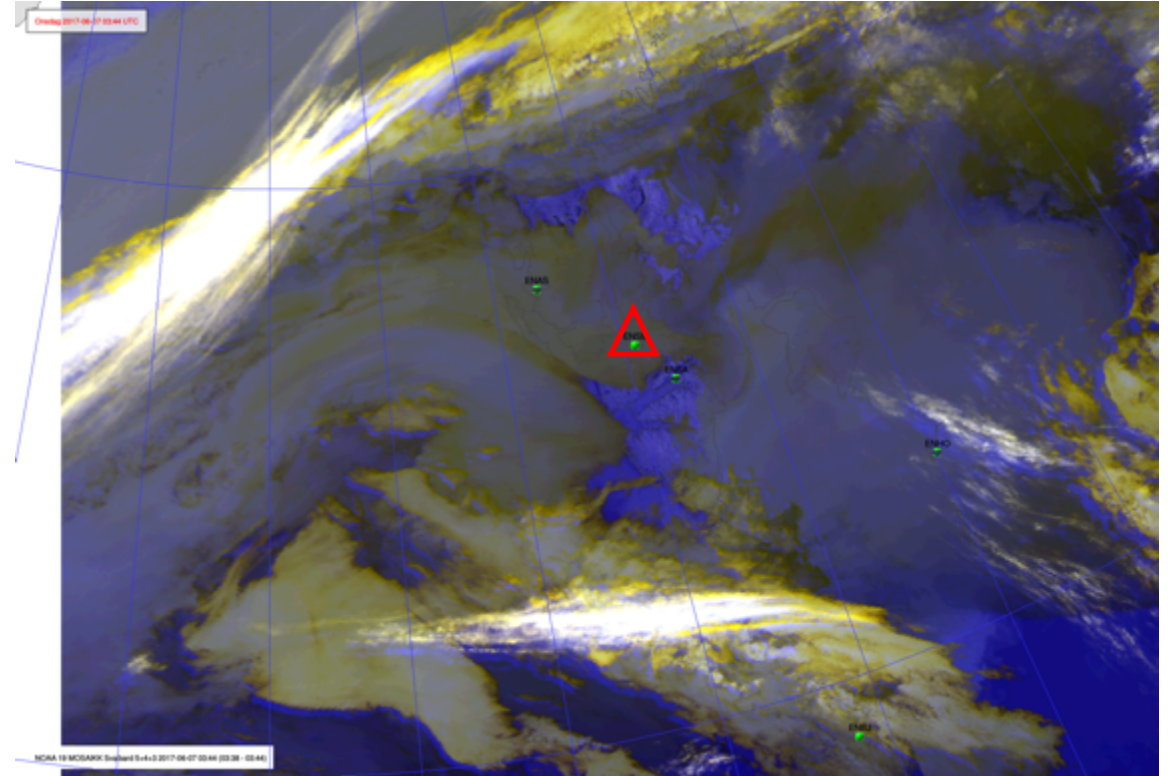
Geopotential Height (m) and Horizontal Wind (m/s) (Wind Speed 10-85 m/s) a
Valid: Wed 2017-06-07 12:00 UTC (step 12 hrs from Wed 2017-06-07 00:00 UTC)



NOAA-19 07 June 2017 @ 03:44 UTC

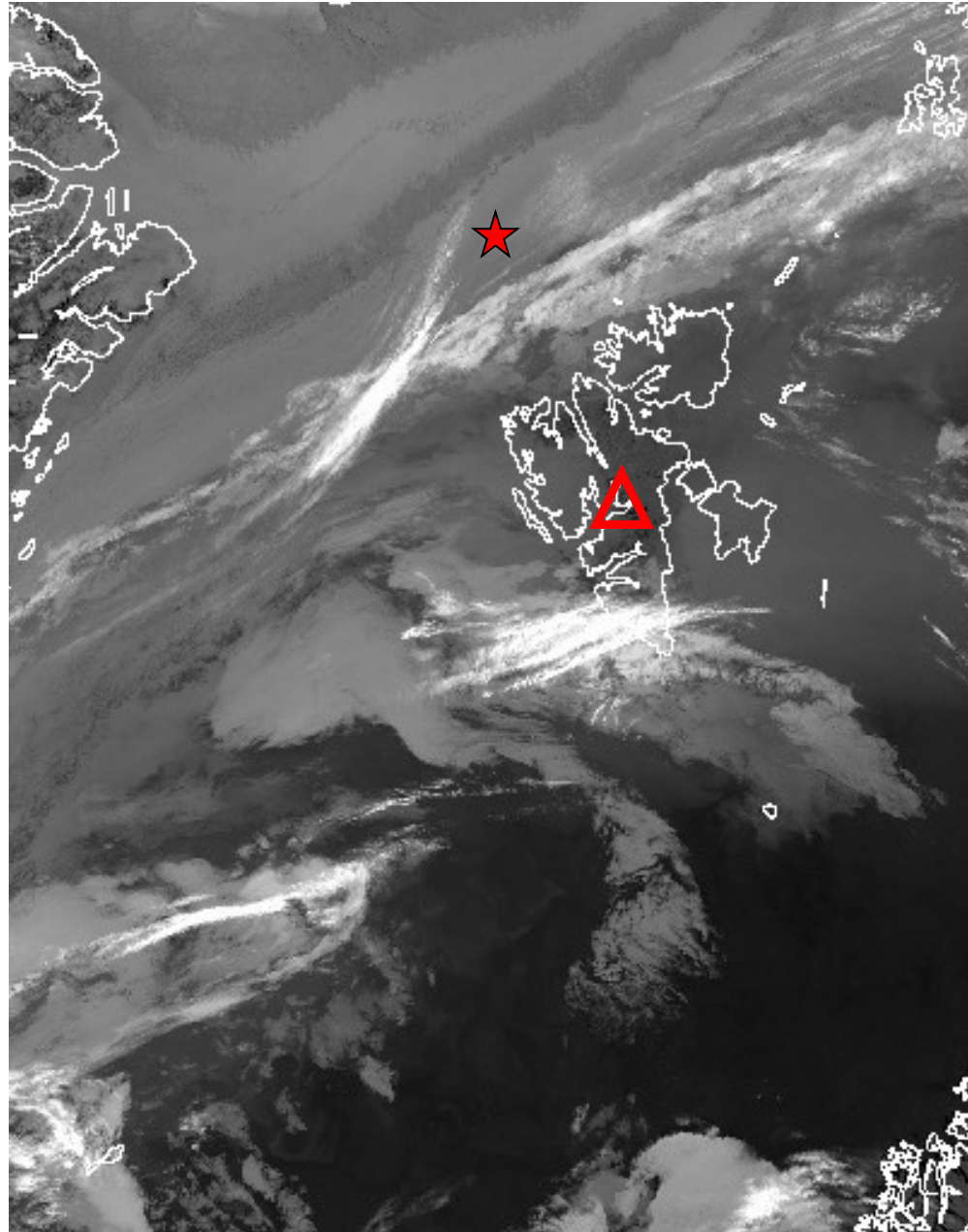


10.8 μm



IR, Ch 5+4+3

NOAA-19 07 June 2017 @ 0704 UTC



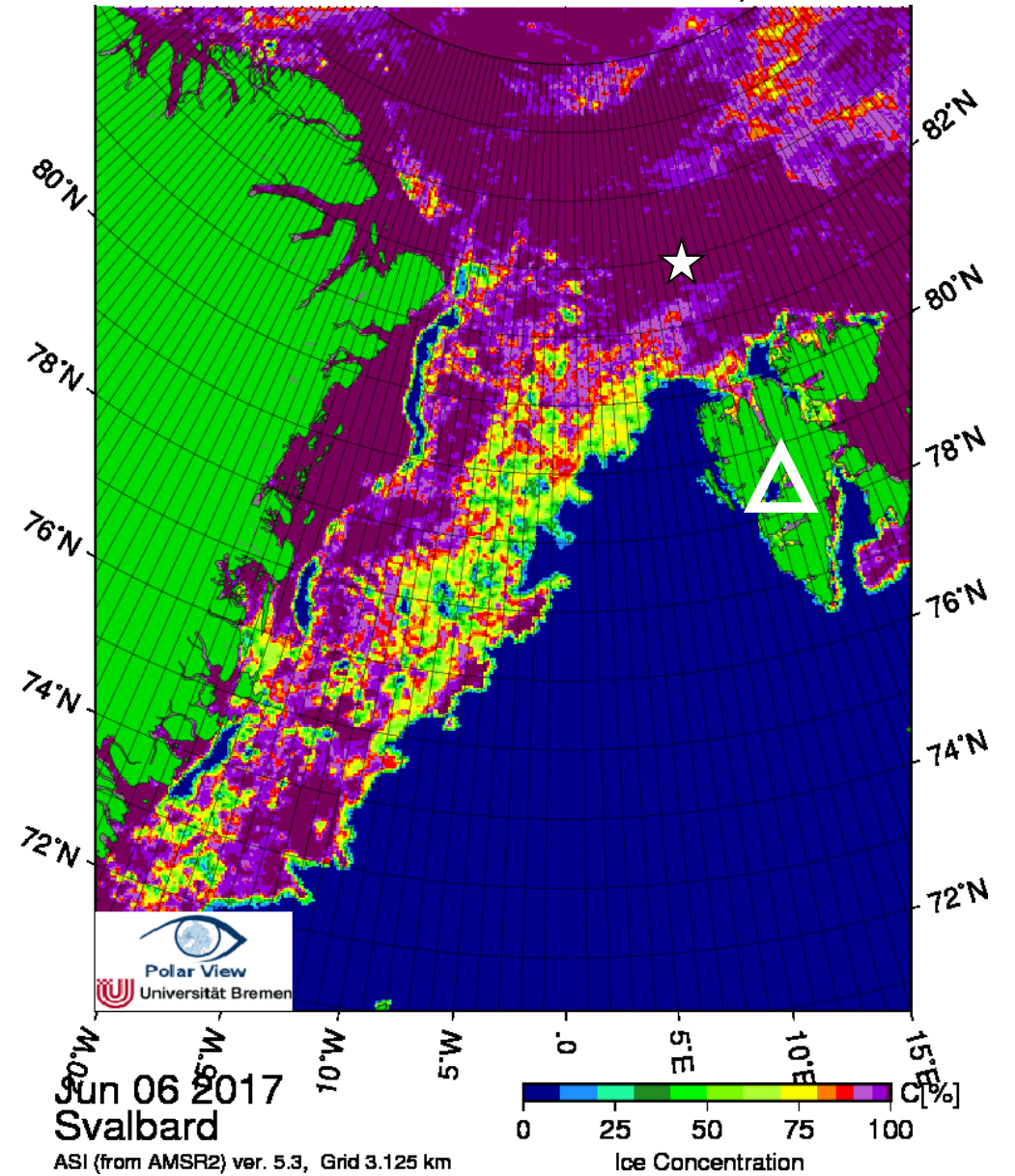
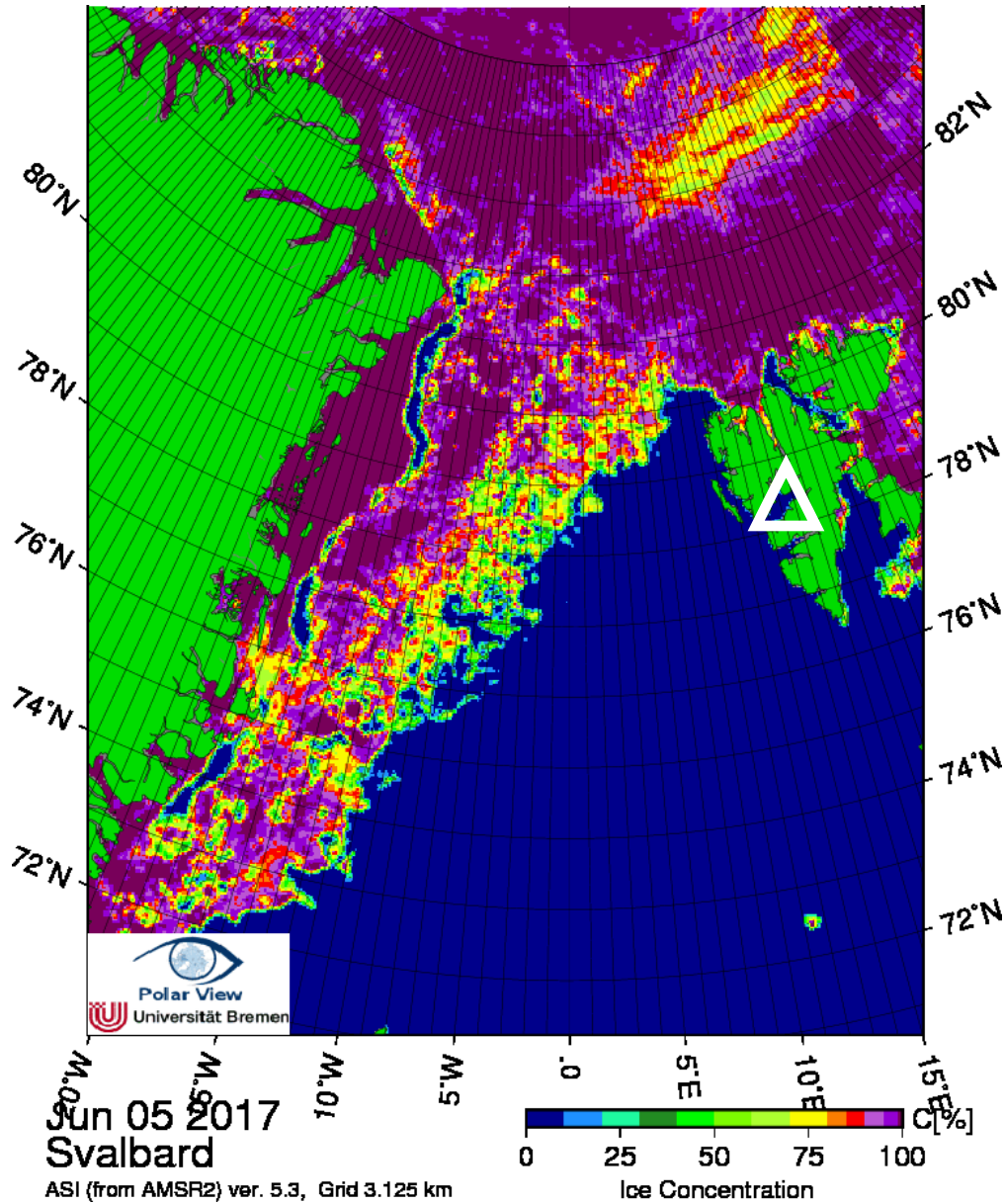
★ RV Polarstern (81.95° N, 10.46° E)

07:04

10.8 μm

Arctic sea ice 5 June & 6 June 2017

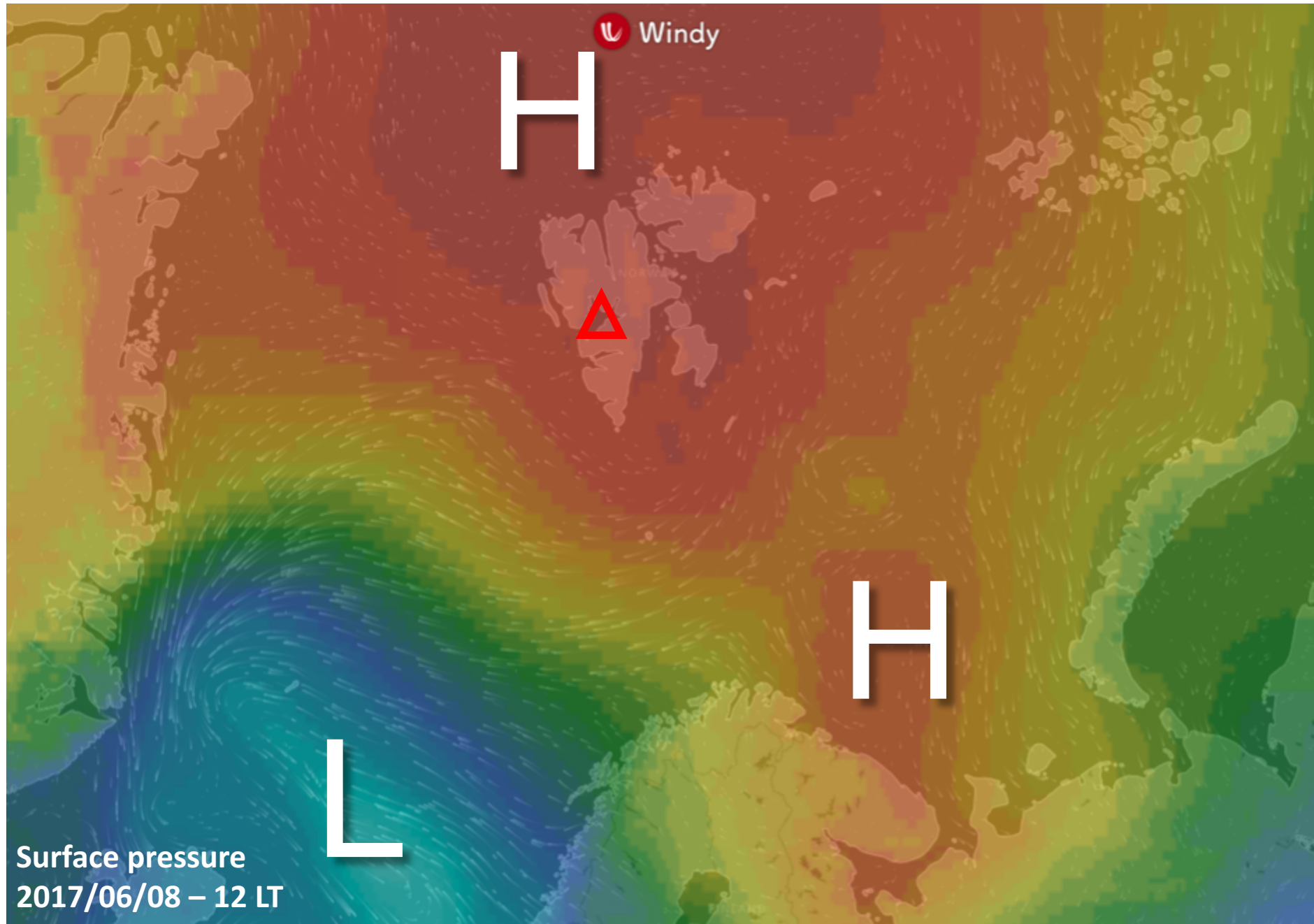
☆ RV Polarstern 5 June 81.94° N, 10.92° E



Tomorrow

Tue 08 June 2017

General Situation Thu 08 June 2017

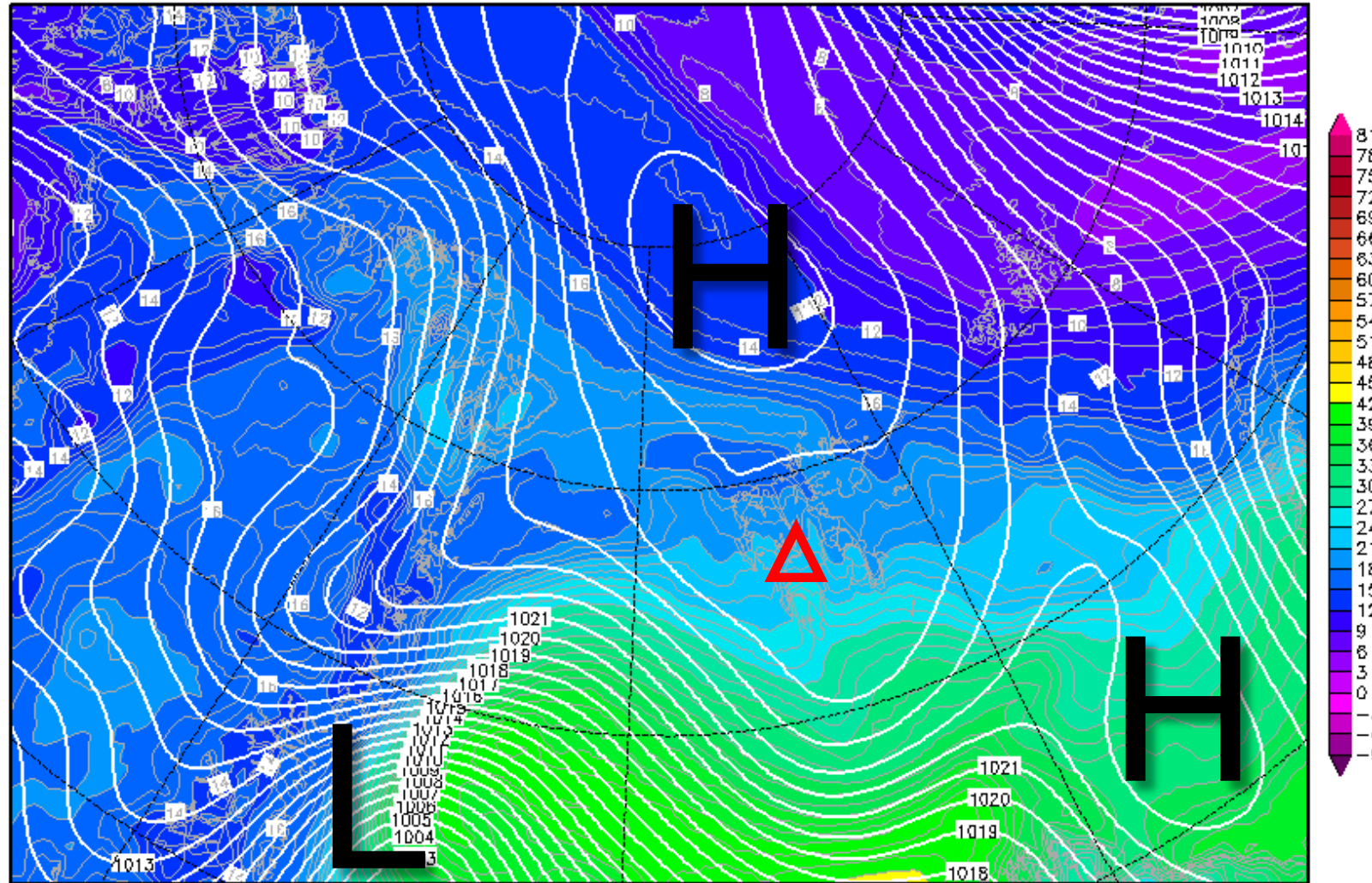


850-hPa Theta Equiv. 08 June 2017 @ 12 UTC

Init : Wed,07JUN2017 00Z

Valid: Thu,08JUN2017 12Z

Bodendruck (hPa) und 850 hPa Aeq.Pot.T. (Grad C)



Daten: GFS-Modell des amerikanischen Wetterdienstes

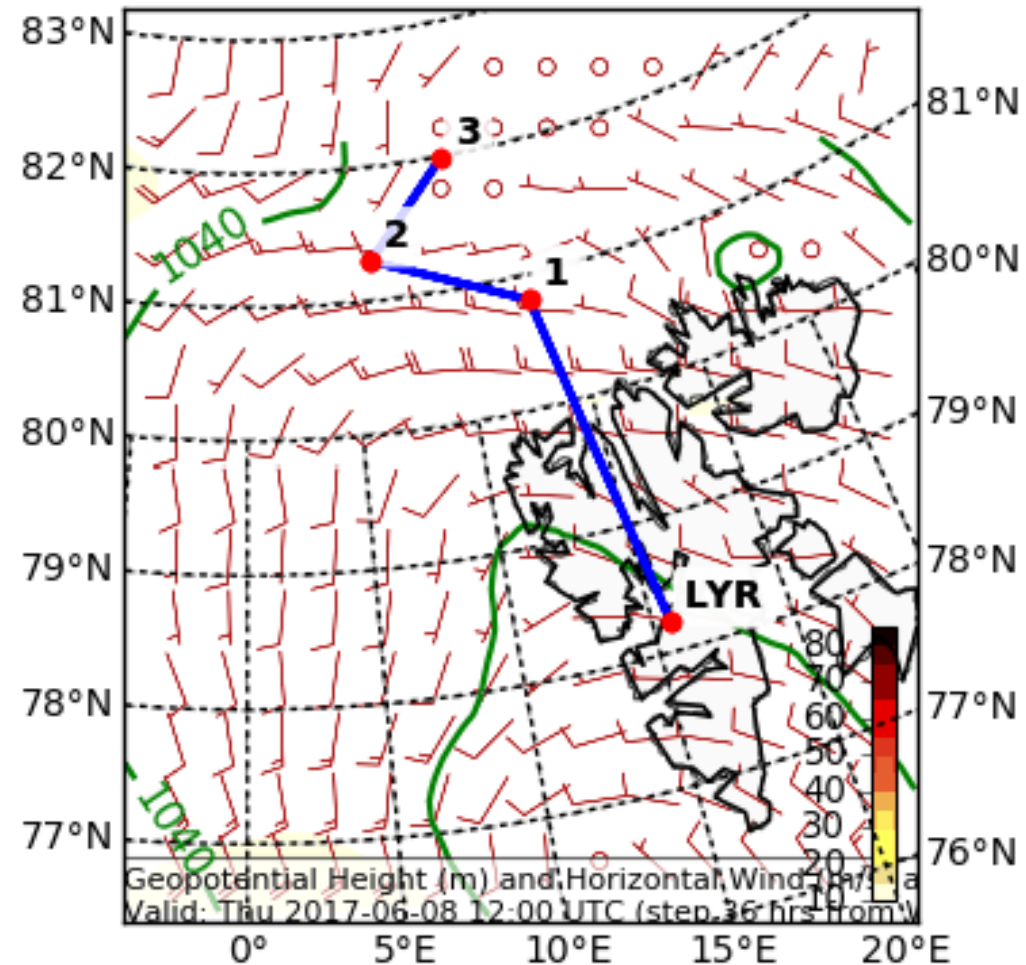
(C) Wetterzentrale

www.wetterzentrale.de

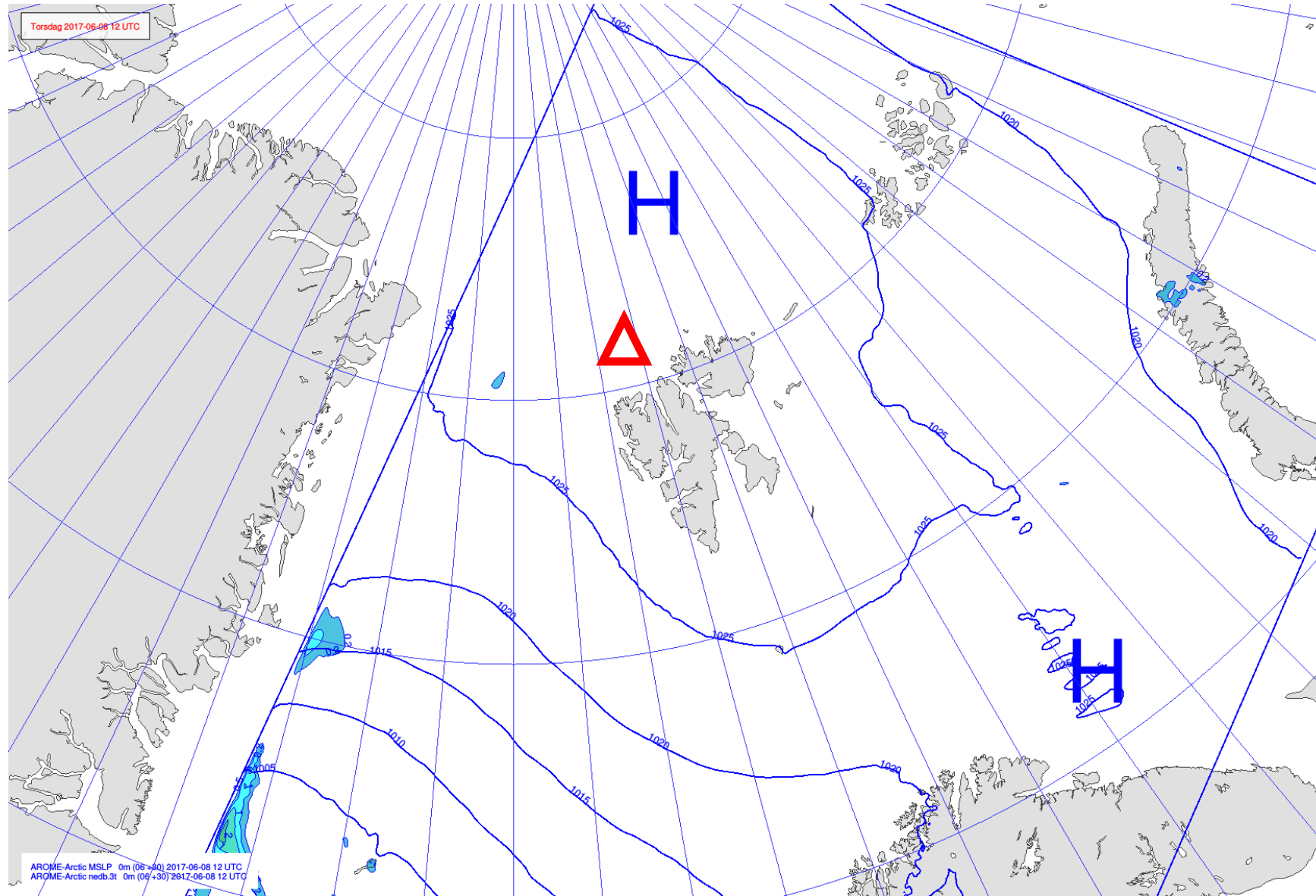
Wind

Thursday 12 UTC

Geopotential Height (m) and Horizontal Wind (m/s) (Wind Speed 10-85 m/s) a
Valid: Thu 2017-06-08 12:00 UTC (step 36 hrs from Wed 2017-06-07 00:00 U

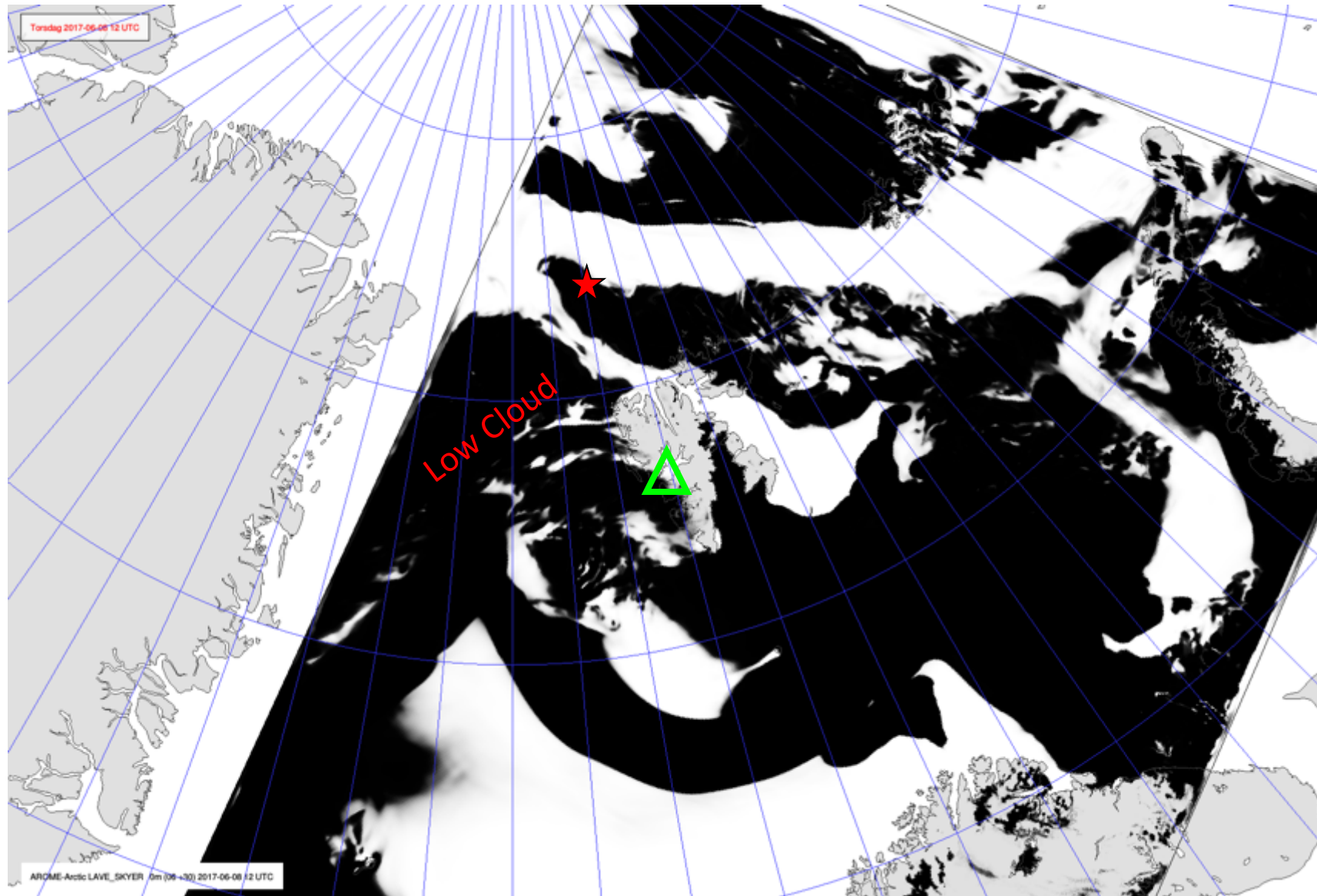


Precipitation Wind 08 June 2017 @ 12 UTC



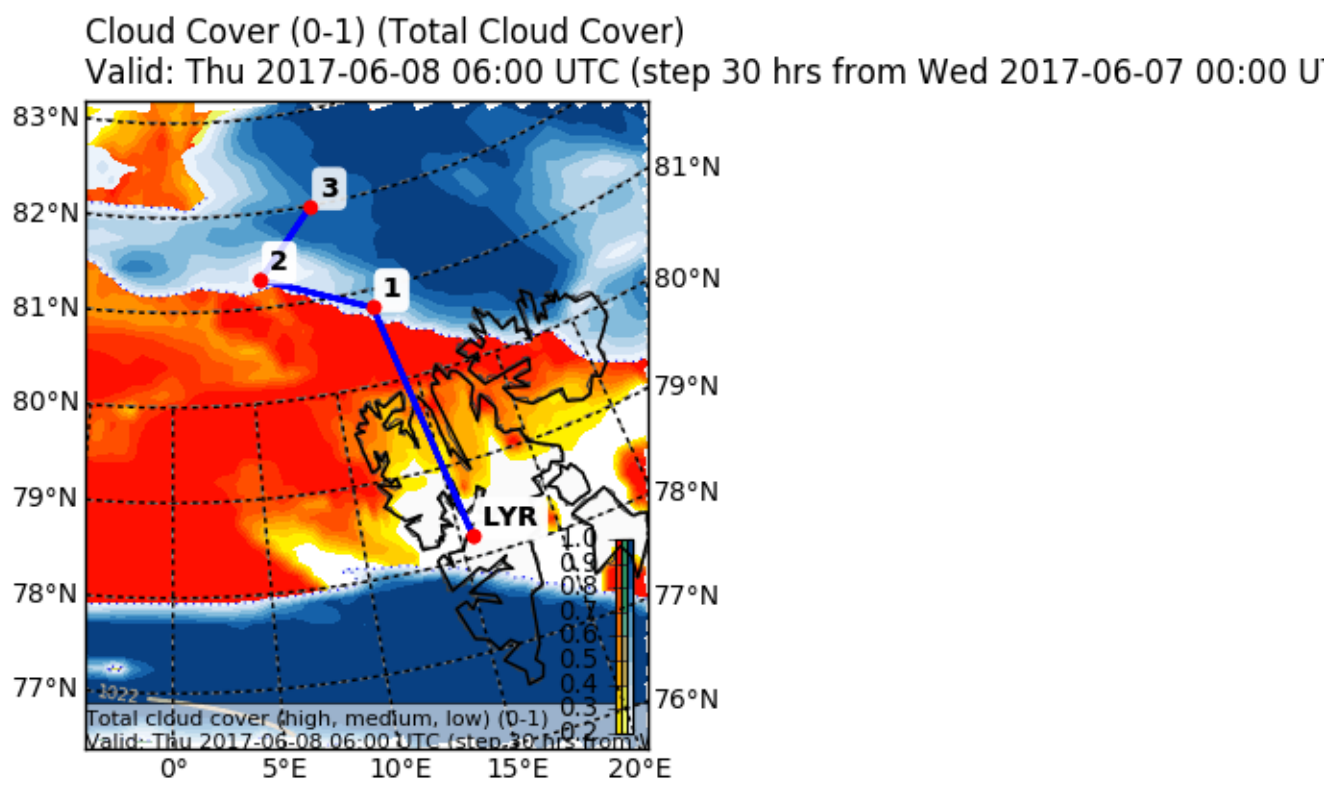
Low-level cloud cover 08 June 2017 @ 12 UTC

★ RV Polarstern (81.94° N, 10.92° E)

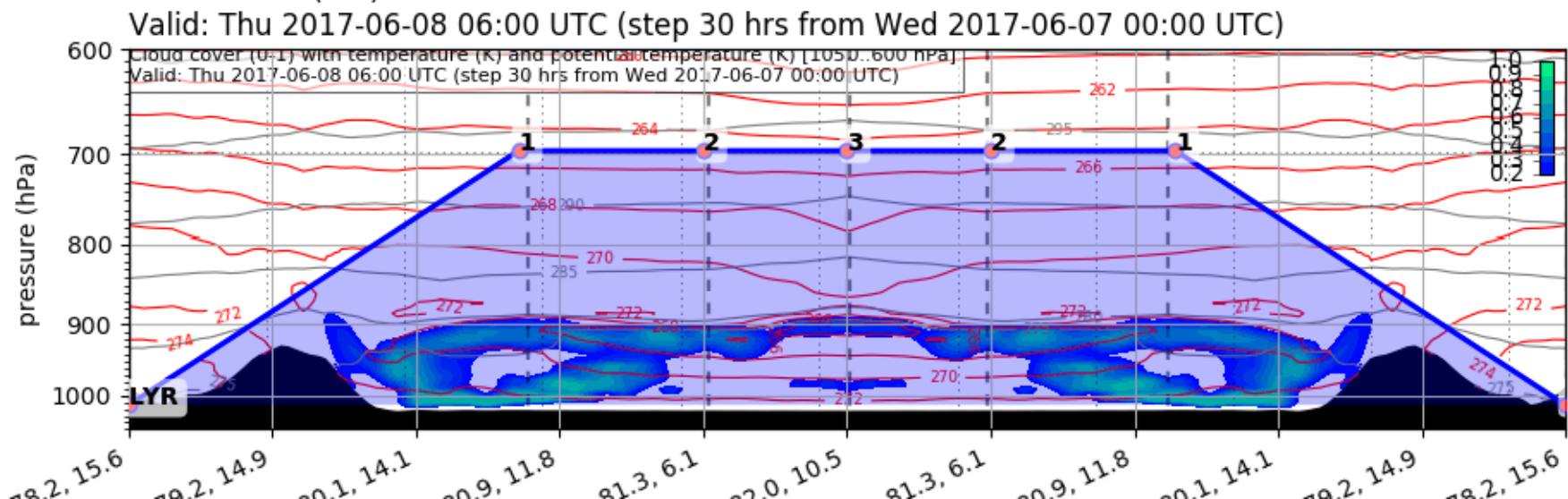


Forecast

Thursday 06 UTC

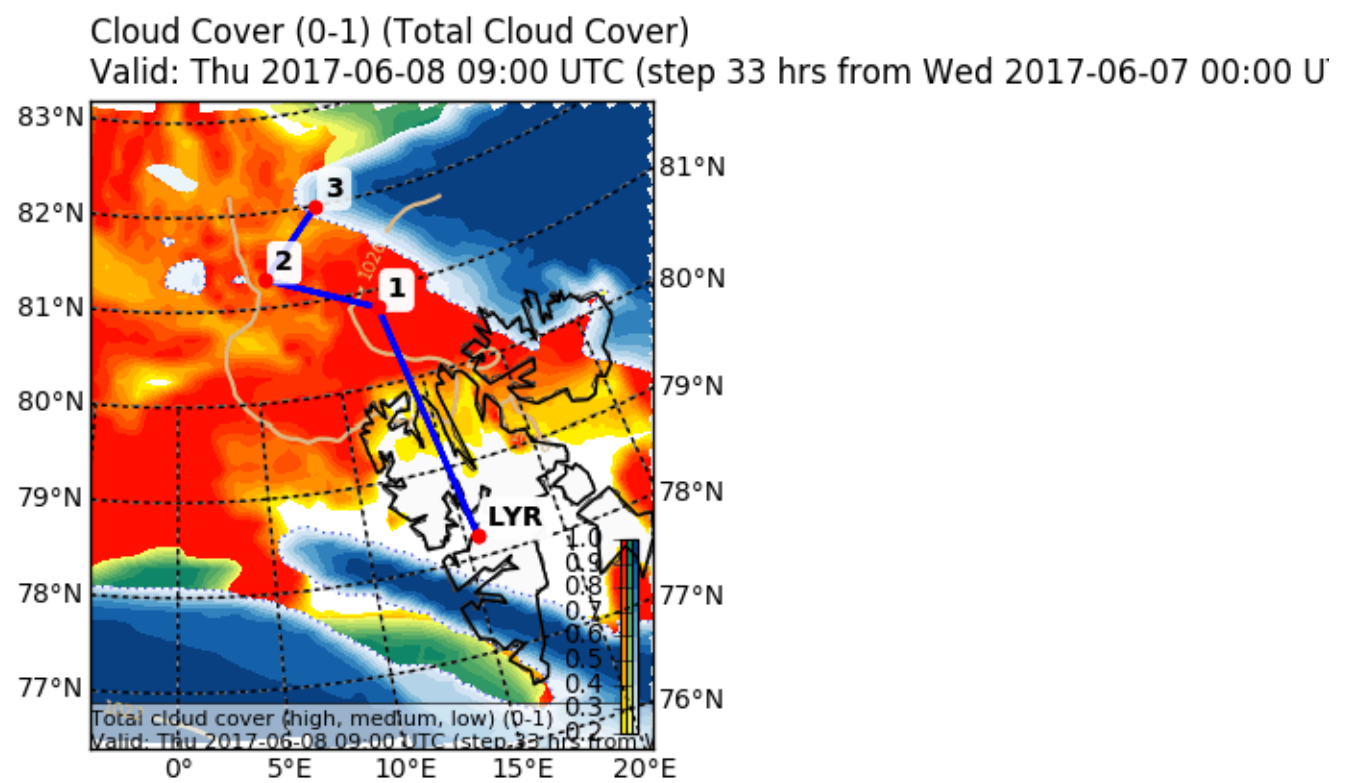


EPSG:77790000

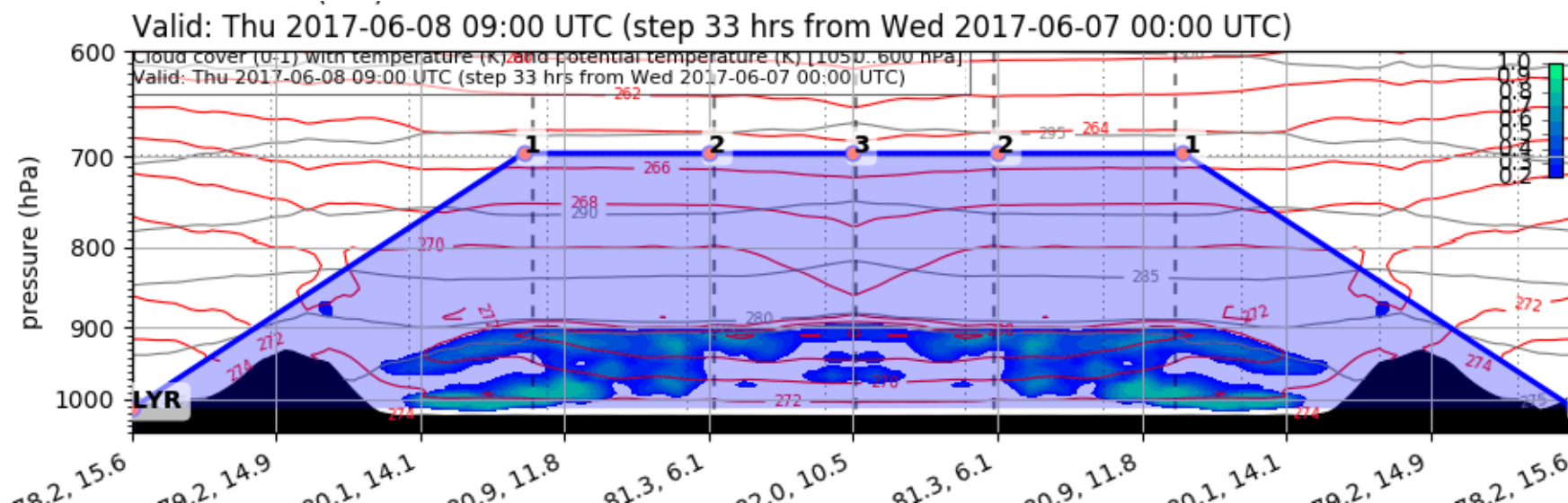


Forecast

Thursday 09 UTC

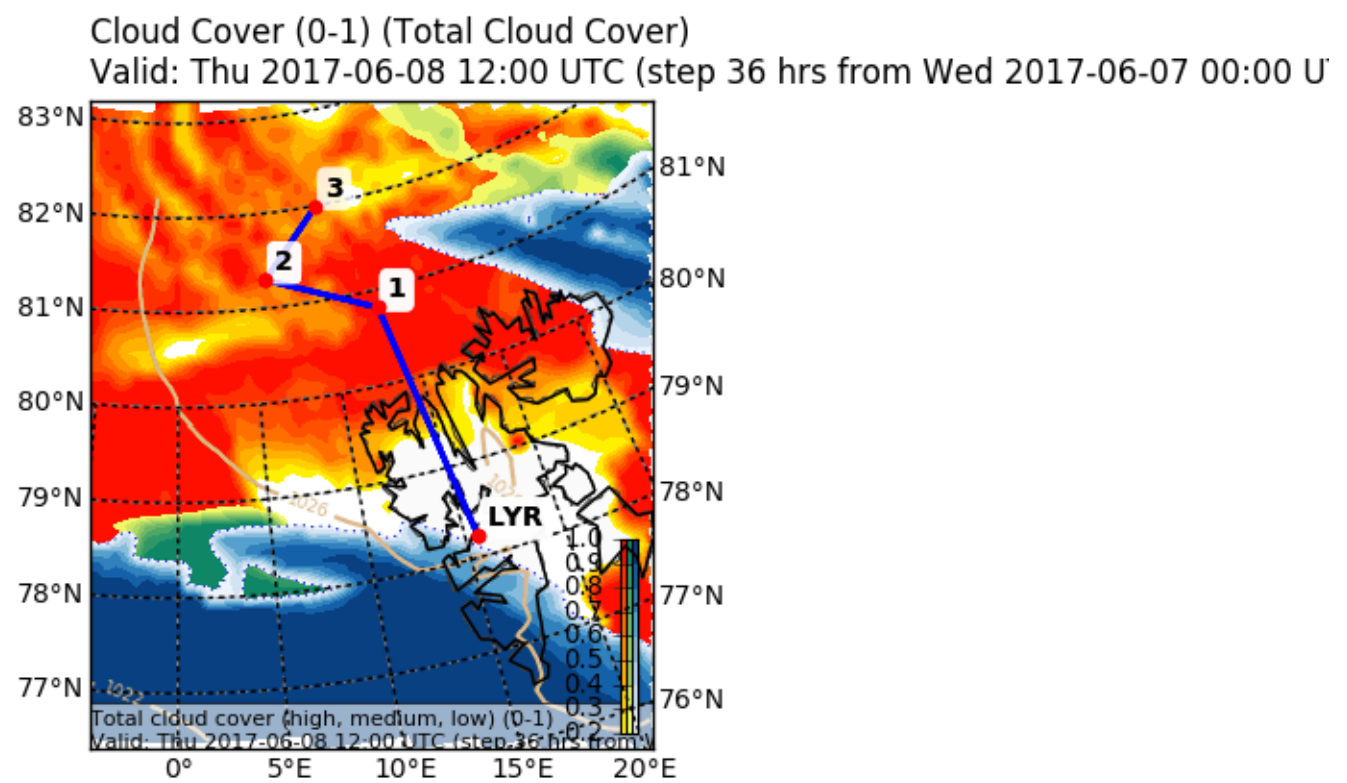


EPSG:77790000

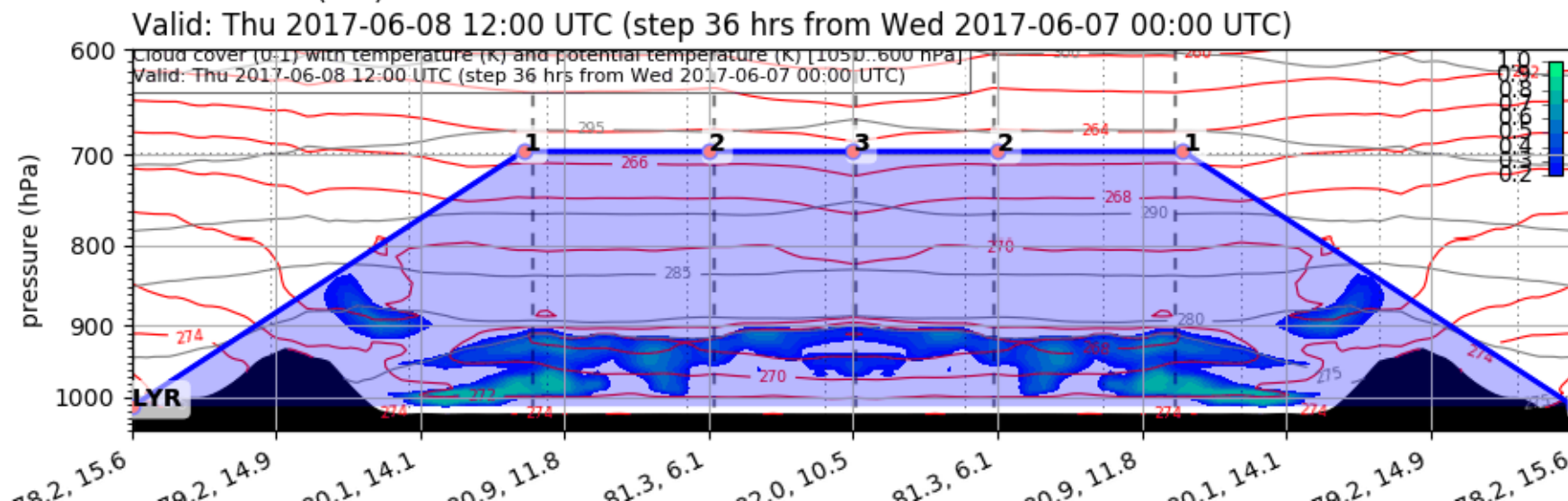


Forecast

Thursday 12 UTC

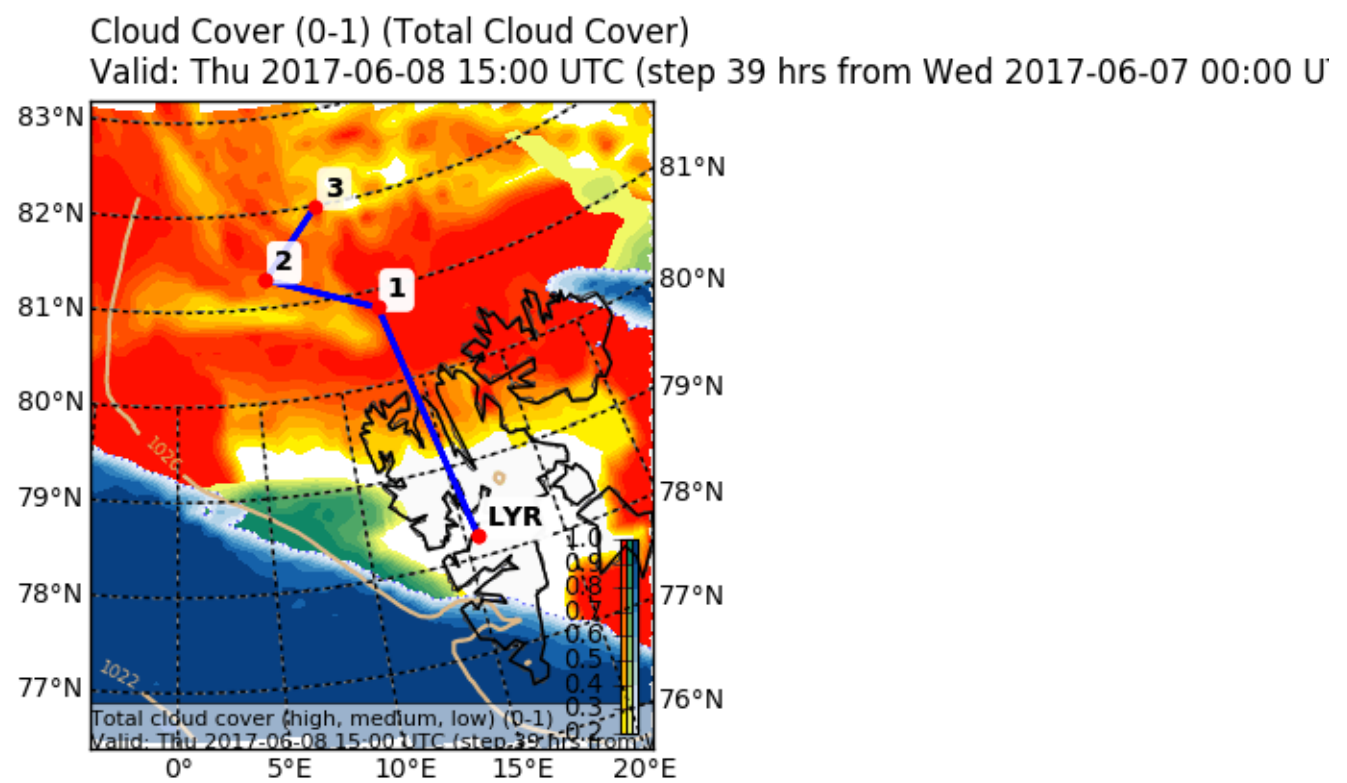


EPSG:77790000

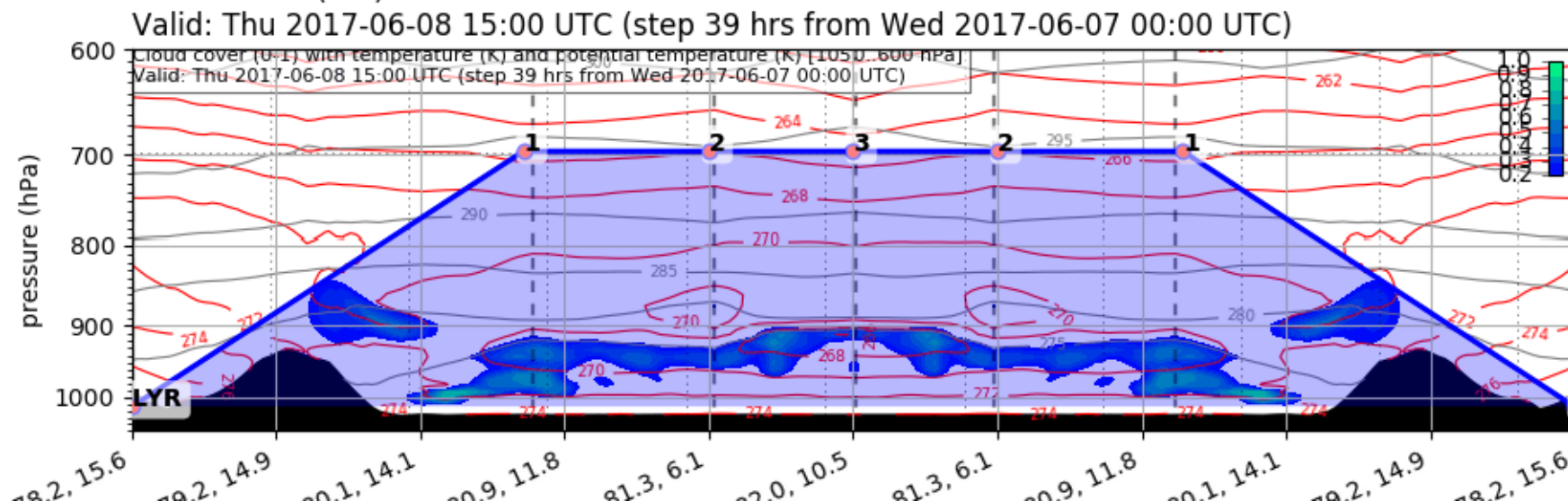


Forecast

Thursday 15 UTC

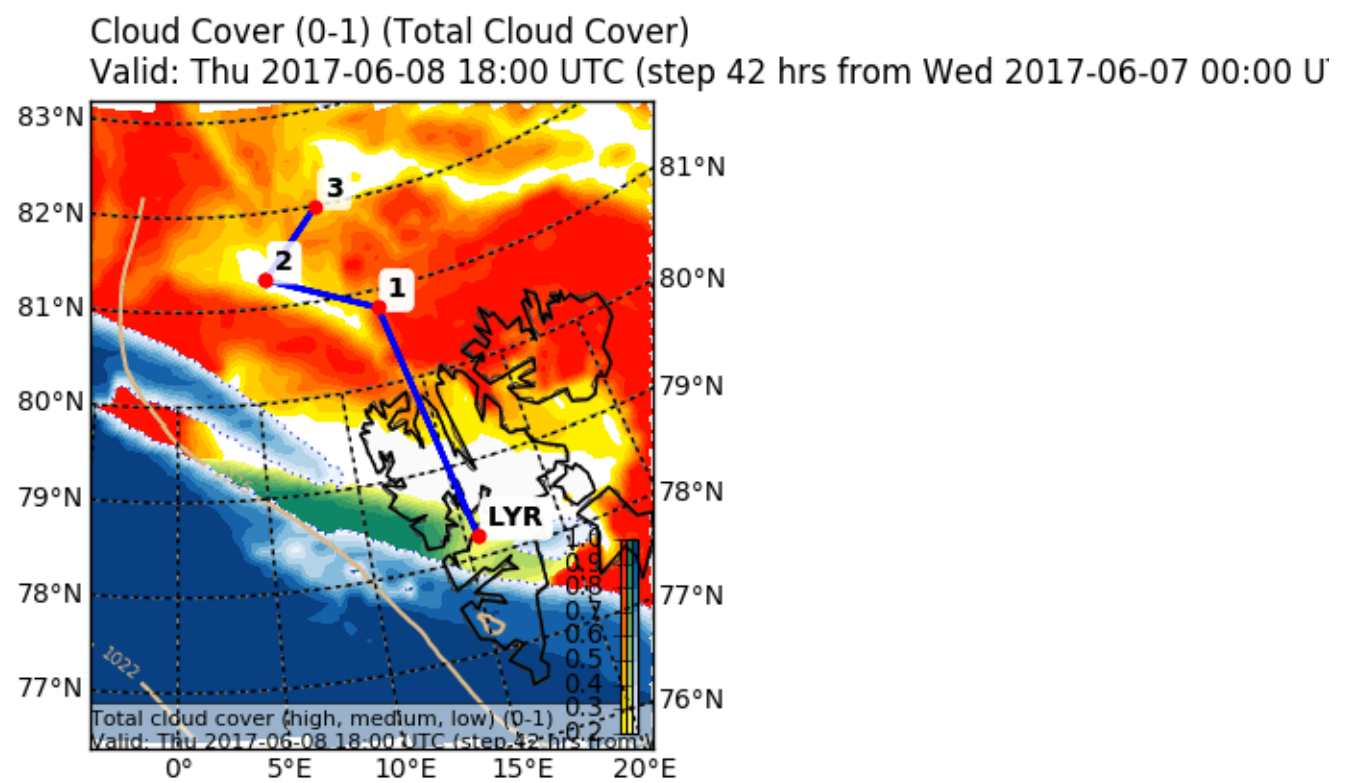


EPSG:77790000

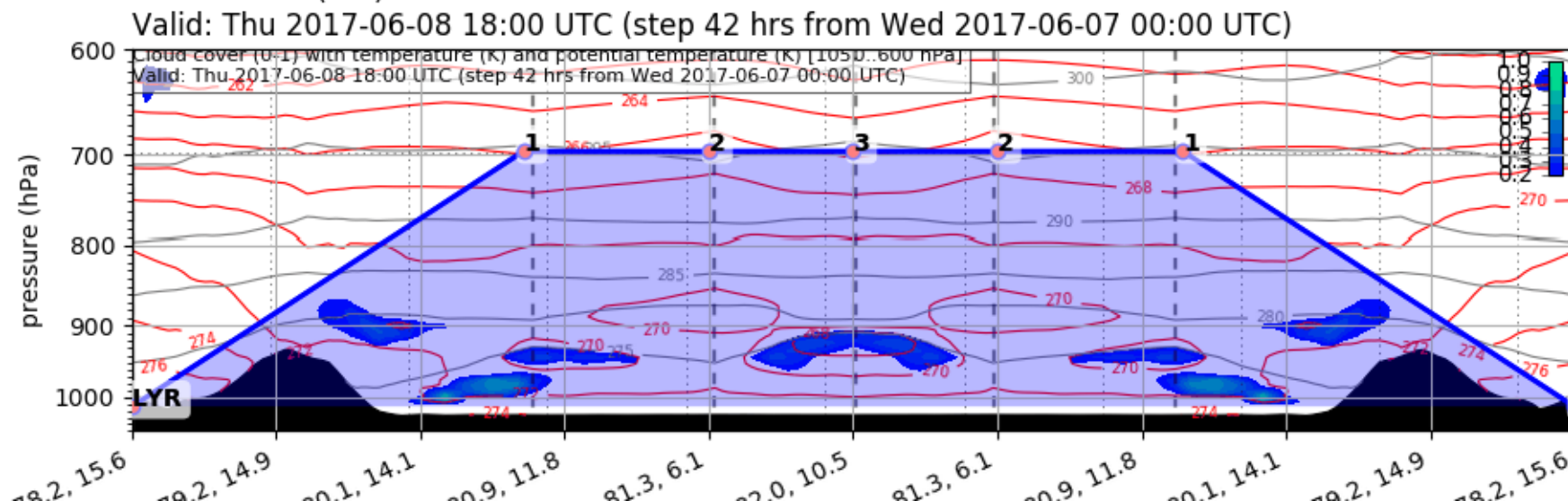


Forecast

Thursday 18 UTC

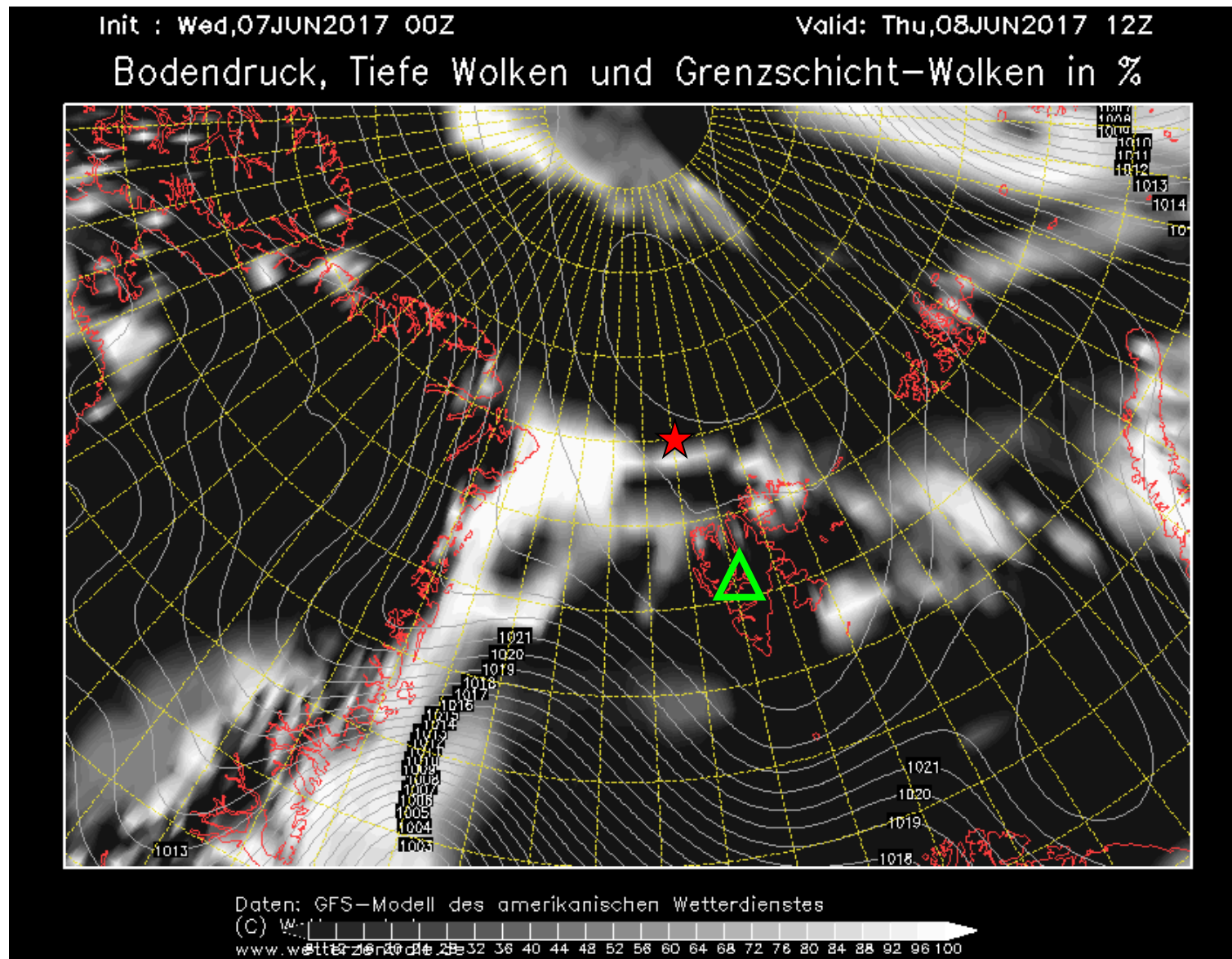


EPSG:77790000



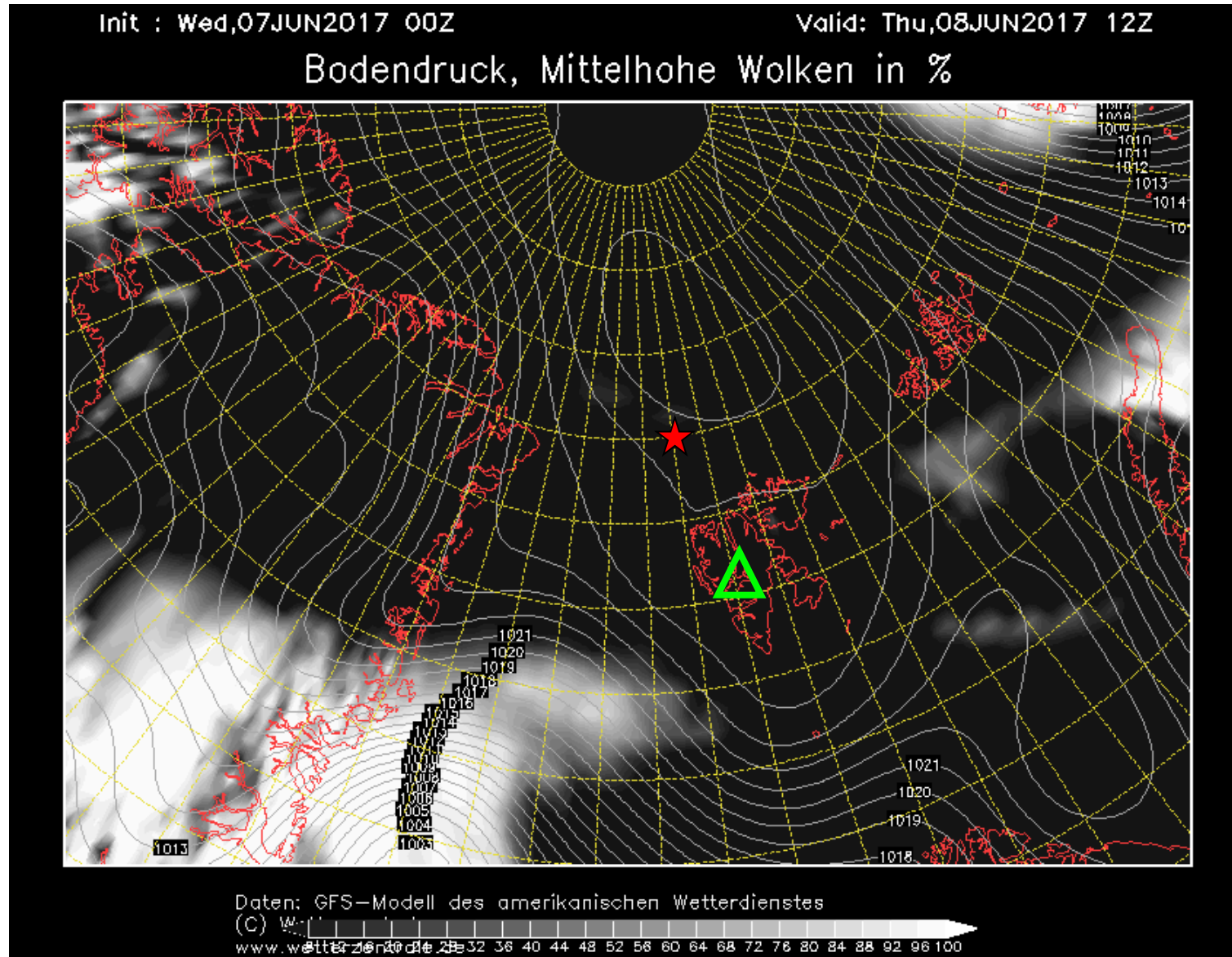
Low-level cloud cover 08 June 2017 @ 12 UTC

★ RV Polarstern (81.94° N, 10.92° E)



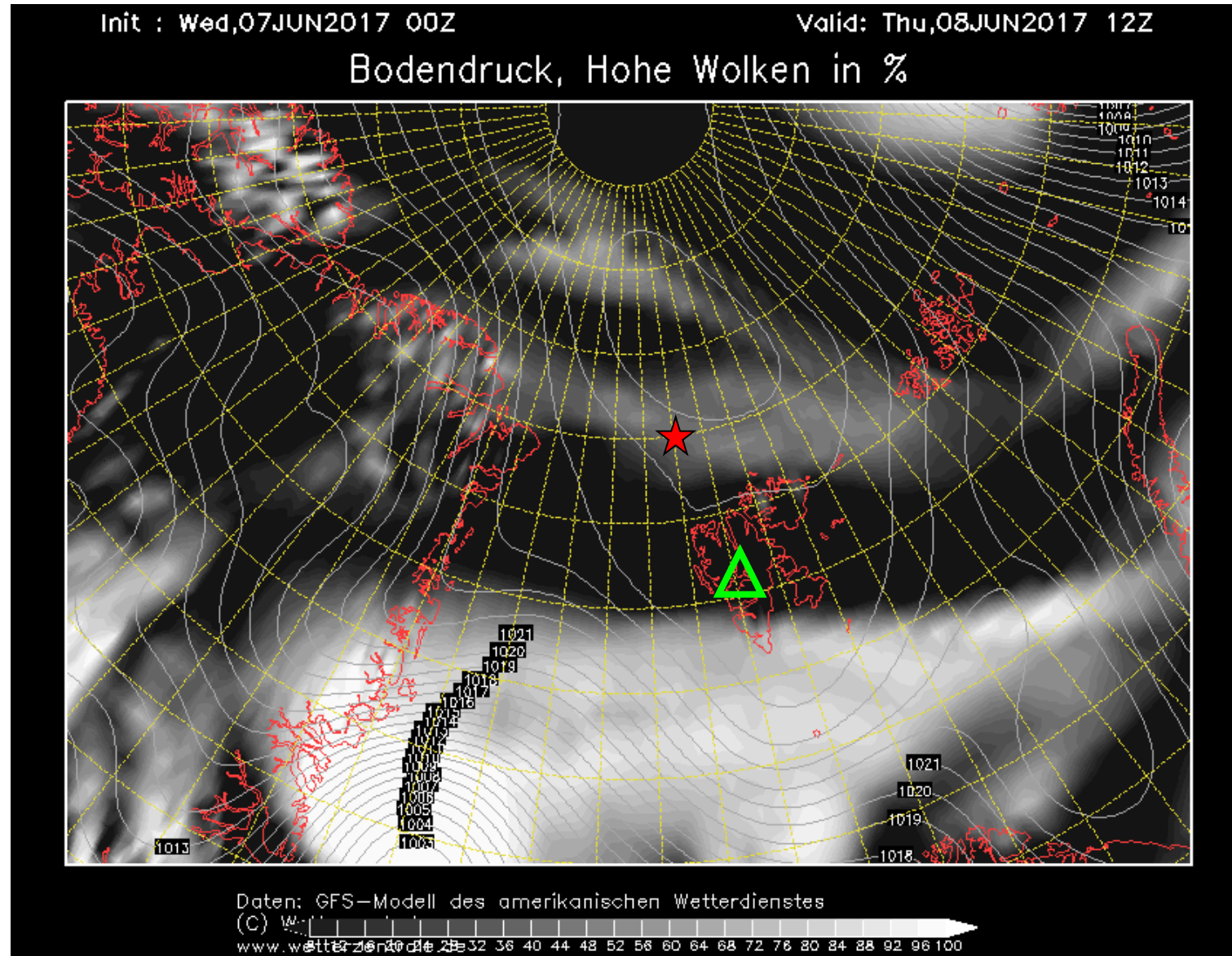
Mid-level cloud cover 08 June 2017 @ 12 UTC

★ RV Polarstern (81.94° N, 10.92° E)



High-level cloud cover 08 June 2017 @ 12 UTC

★ RV Polarstern (81.94° N, 10.92° E)

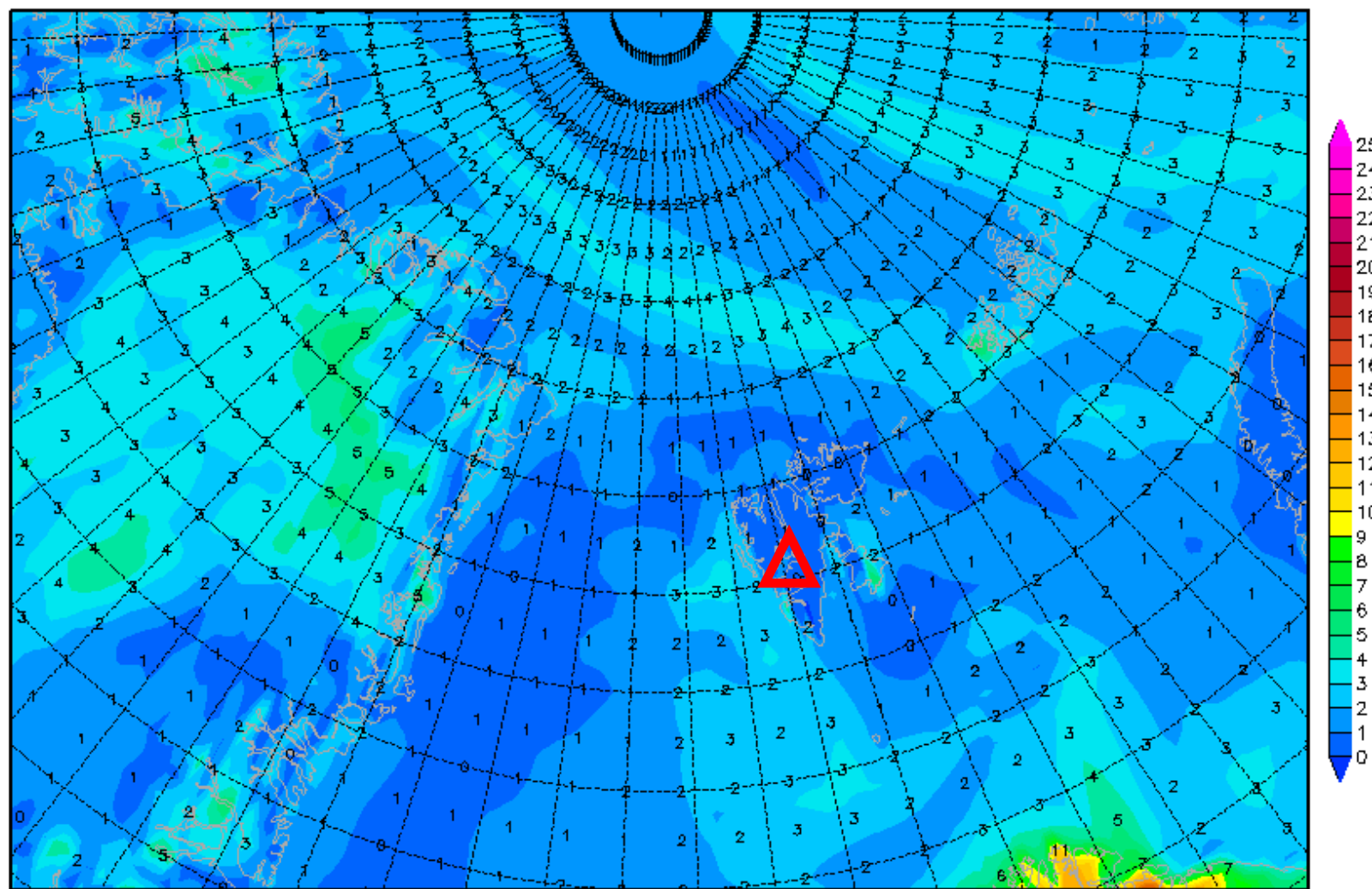


2-m dew point diff. 8 June 2017 @ 12 UTC

Init : Wed,07JUN2017 00Z

Valid: Thu,08JUN2017 12Z

2m (Temperatur-Taupunkt)



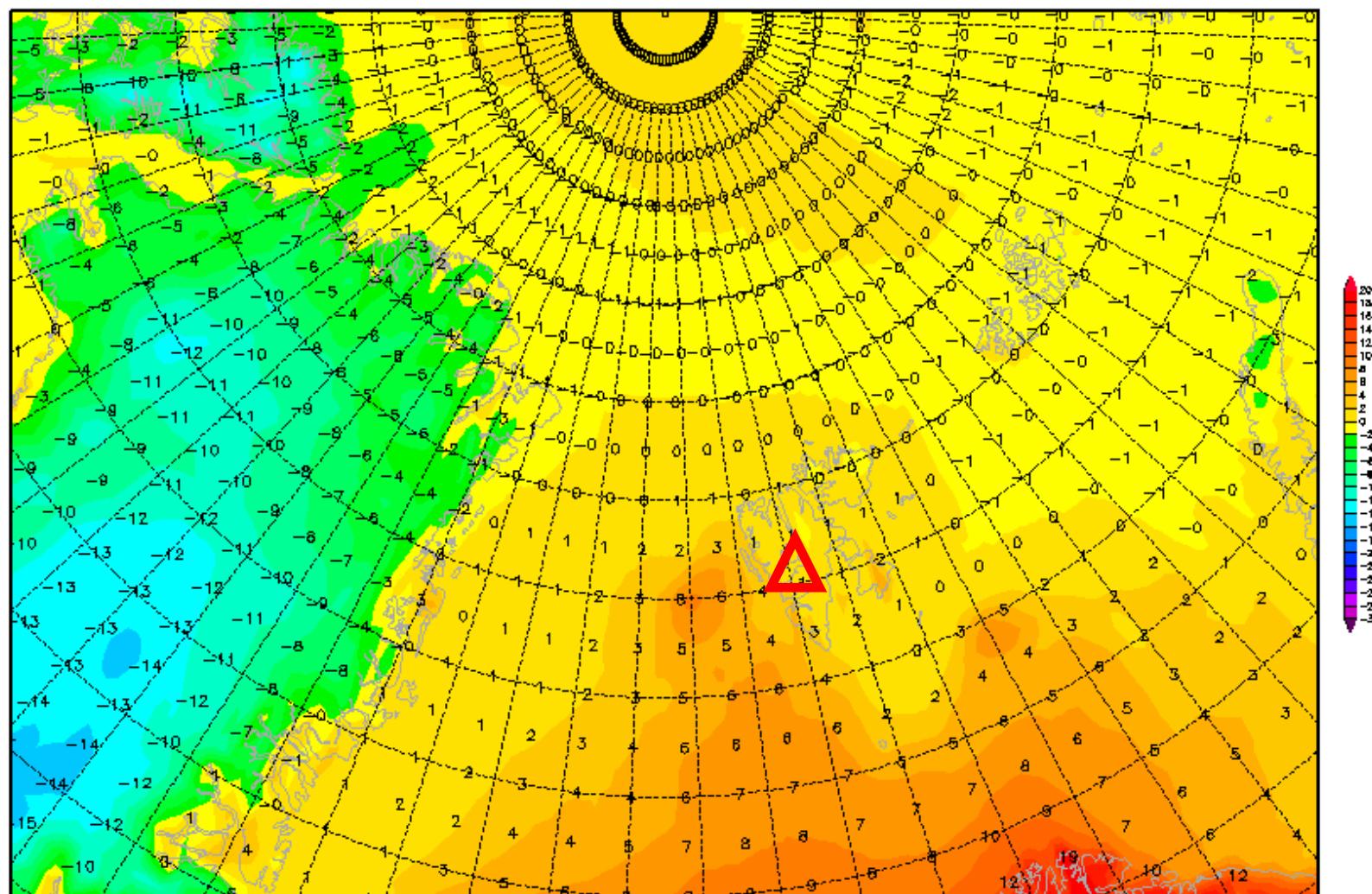
Daten: GFS
(C) Wetterzentrale
www.wetterzentrale.de

2-m temperature 8 June 2017 @ 12 UTC

Init : Wed,07JUN2017 00Z

Valid: Thu,08JUN2017 12Z

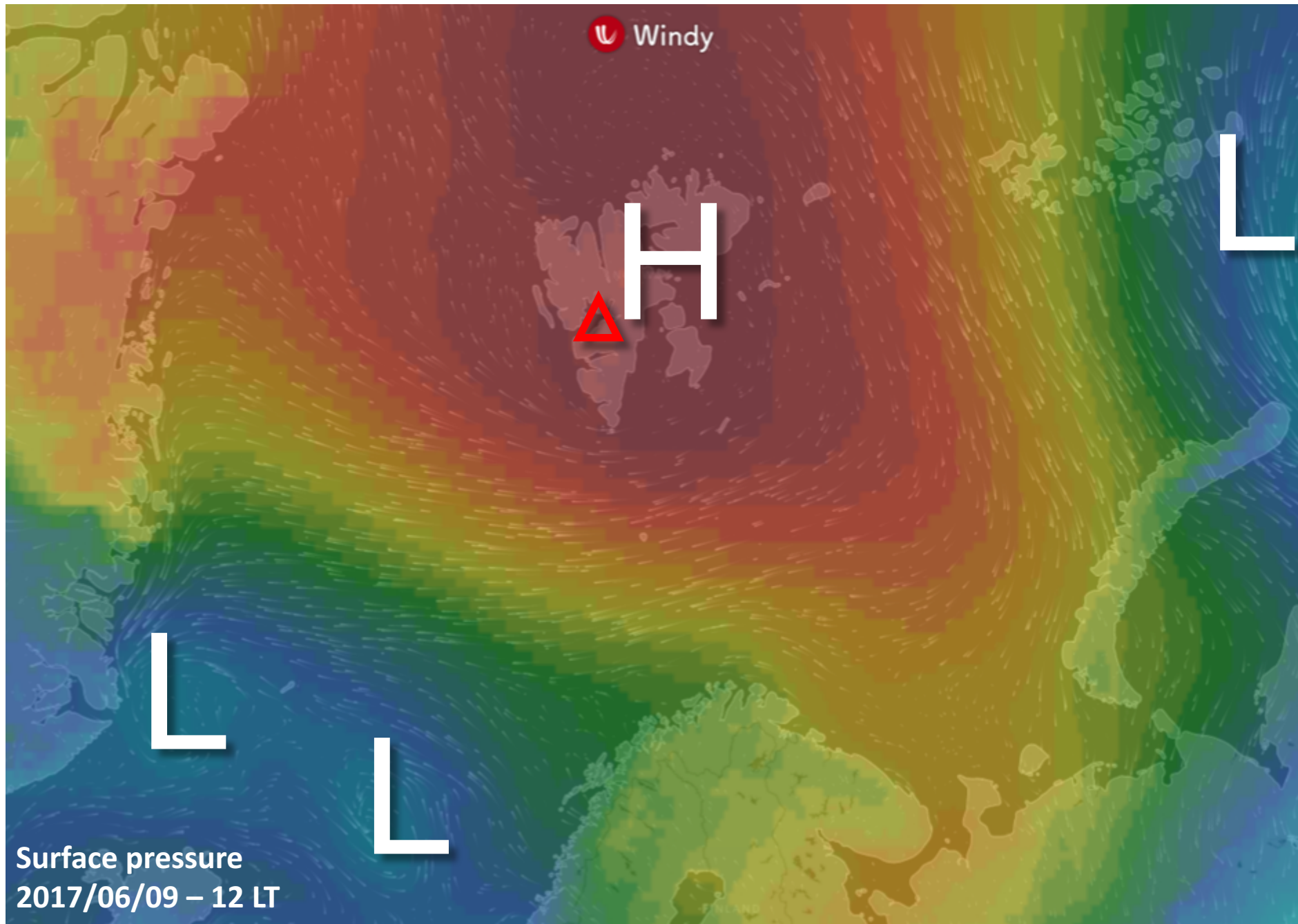
2m Temperatur (°C)



Outlook

Fri 9 June – Sun 11 June 2017

General Situation Fri 9 June 2017

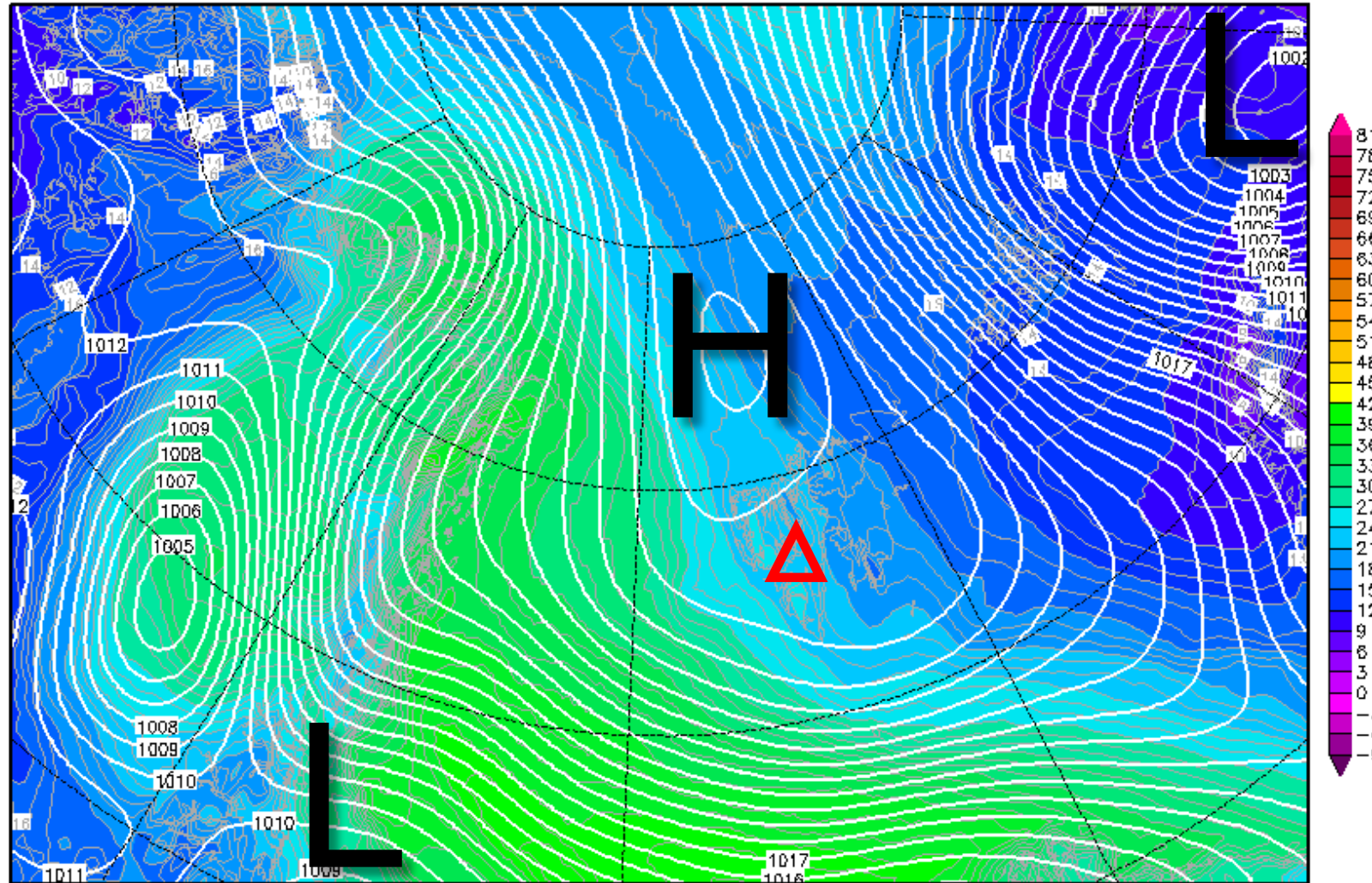


850-hPa Theta Equiv. 9 June 2017 @ 12 UTC

Init : Wed,07JUN2017 00Z

Valid: Fri,09JUN2017 12Z

Bodendruck (hPa) und 850 hPa Aeq.Pot.T. (Grad C)



Daten: GFS-Modell des amerikanischen Wetterdienstes

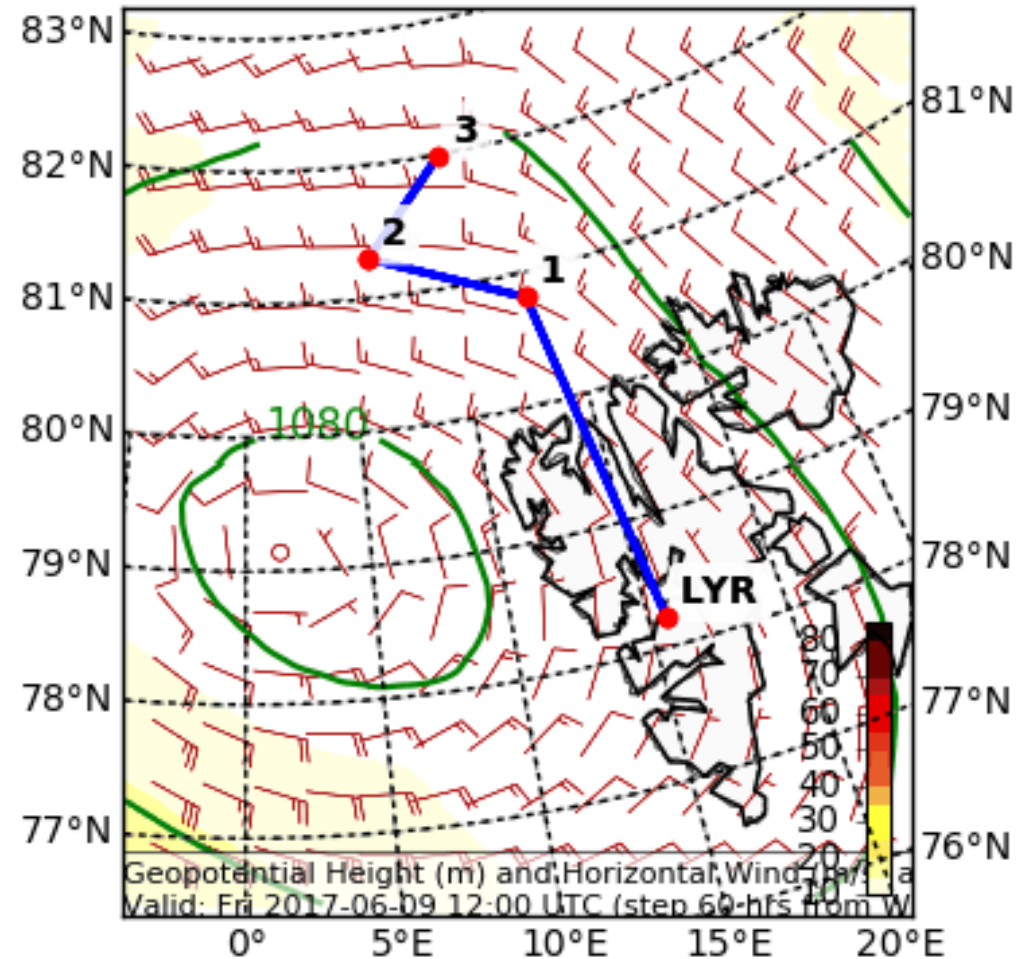
(C) Wetterzentrale

www.wetterzentrale.de

Wind

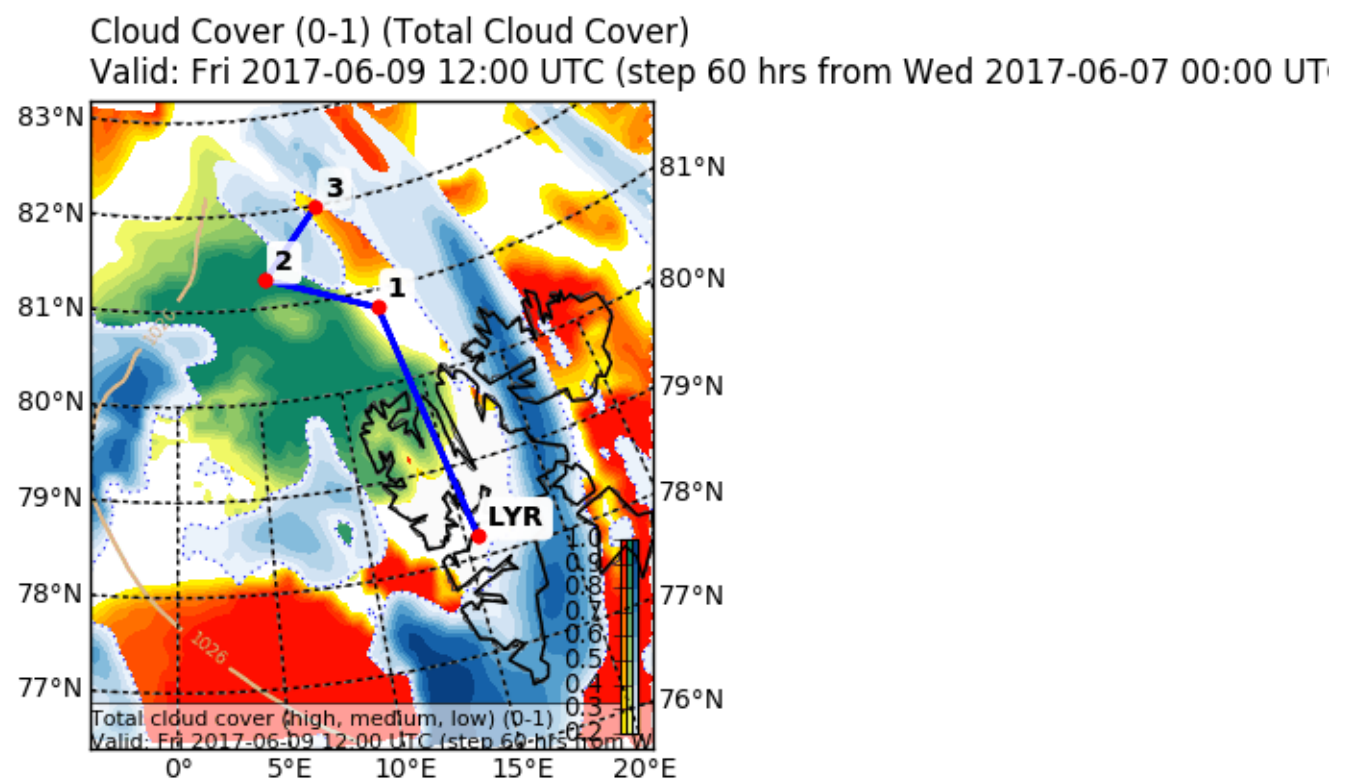
Friday 12 UTC

Geopotential Height (m) and Horizontal Wind (m/s) (Wind Speed 10-85 m/s) a
Valid: Fri 2017-06-09 12:00 UTC (step 60 hrs from Wed 2017-06-07 00:00 UTC)

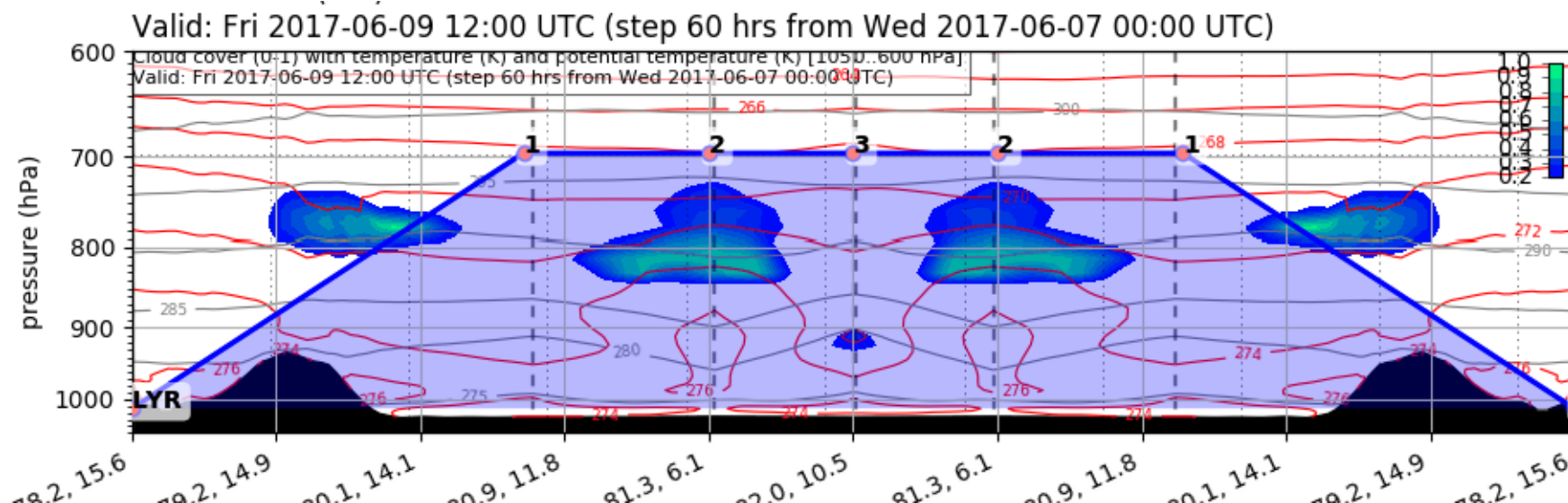


Forecast

Friday 12 UTC

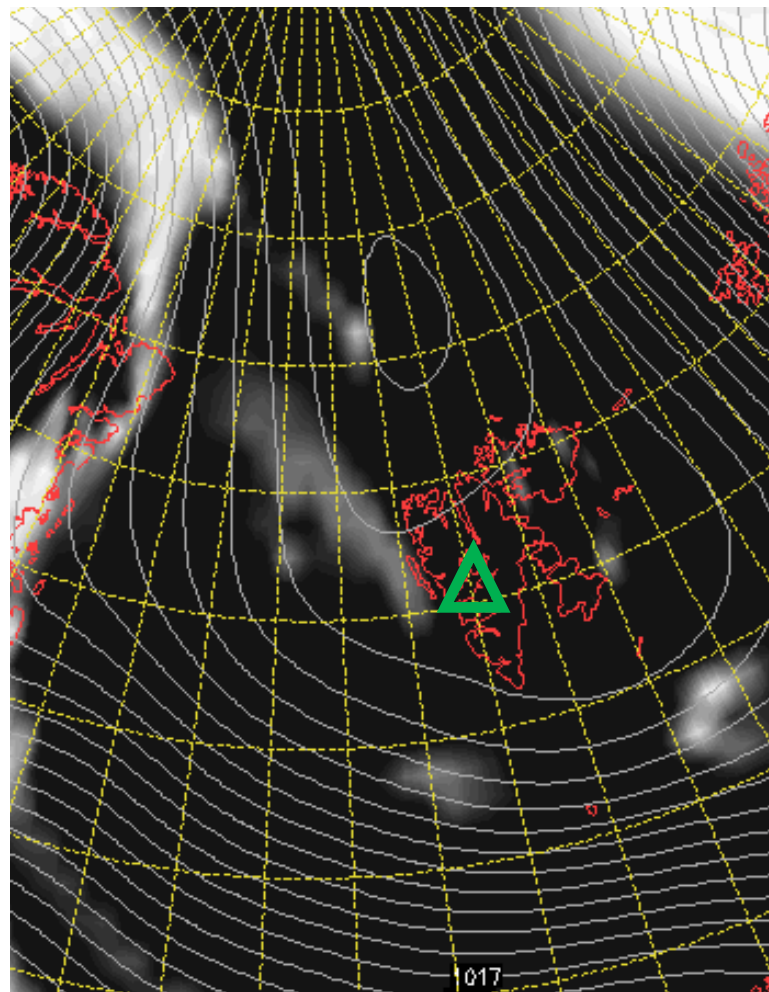


EPSG:77790000

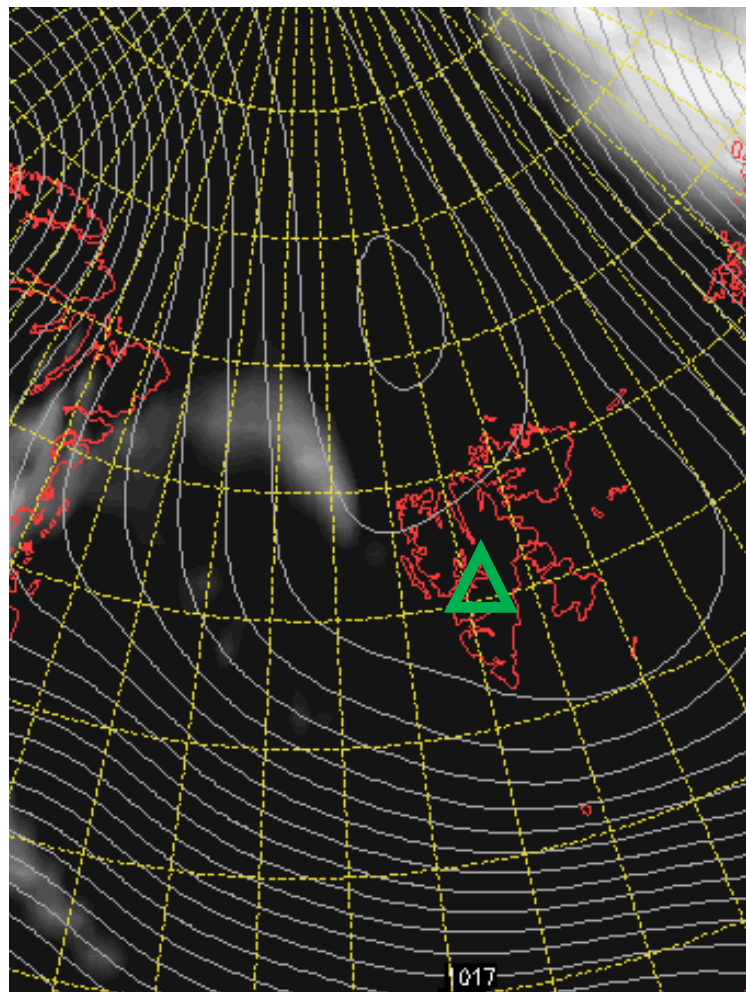


Cloud Cover 7 June 2017 @ 12 UTC

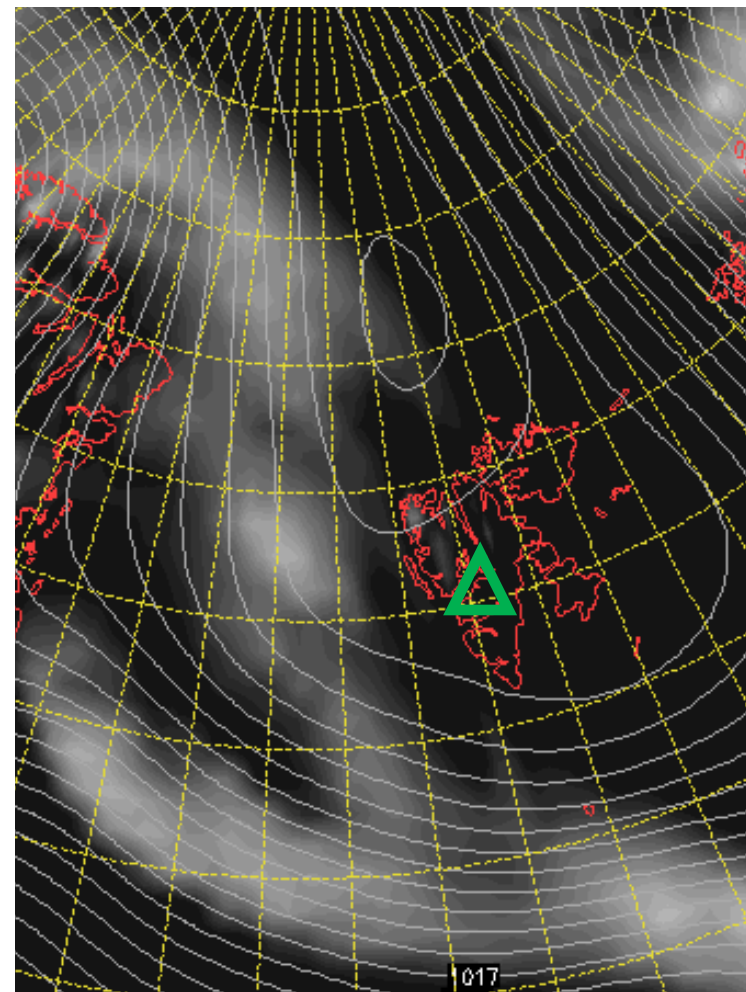
L



M



H

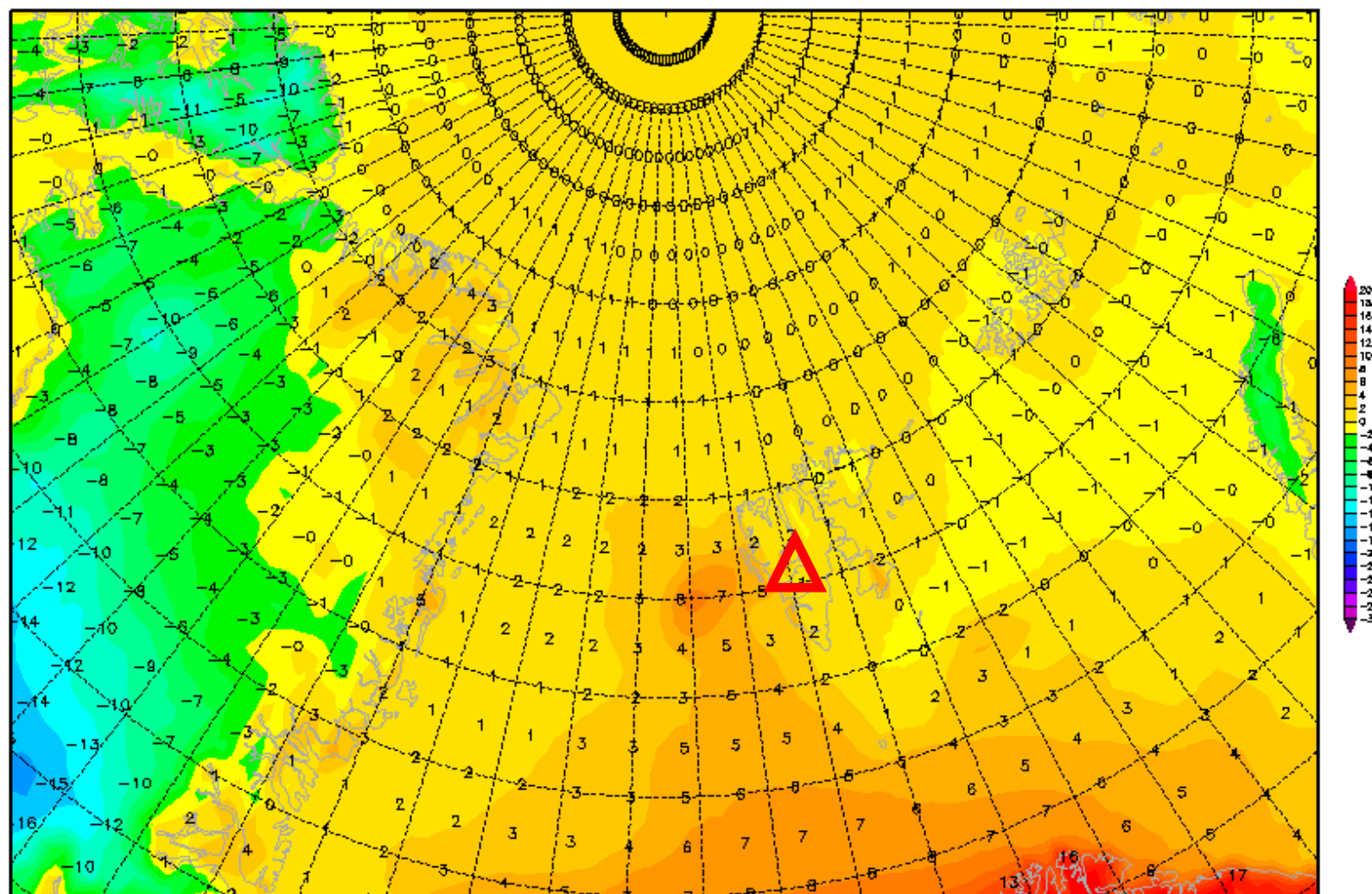


2-m temperature 7 June 2017 @ 12 UTC

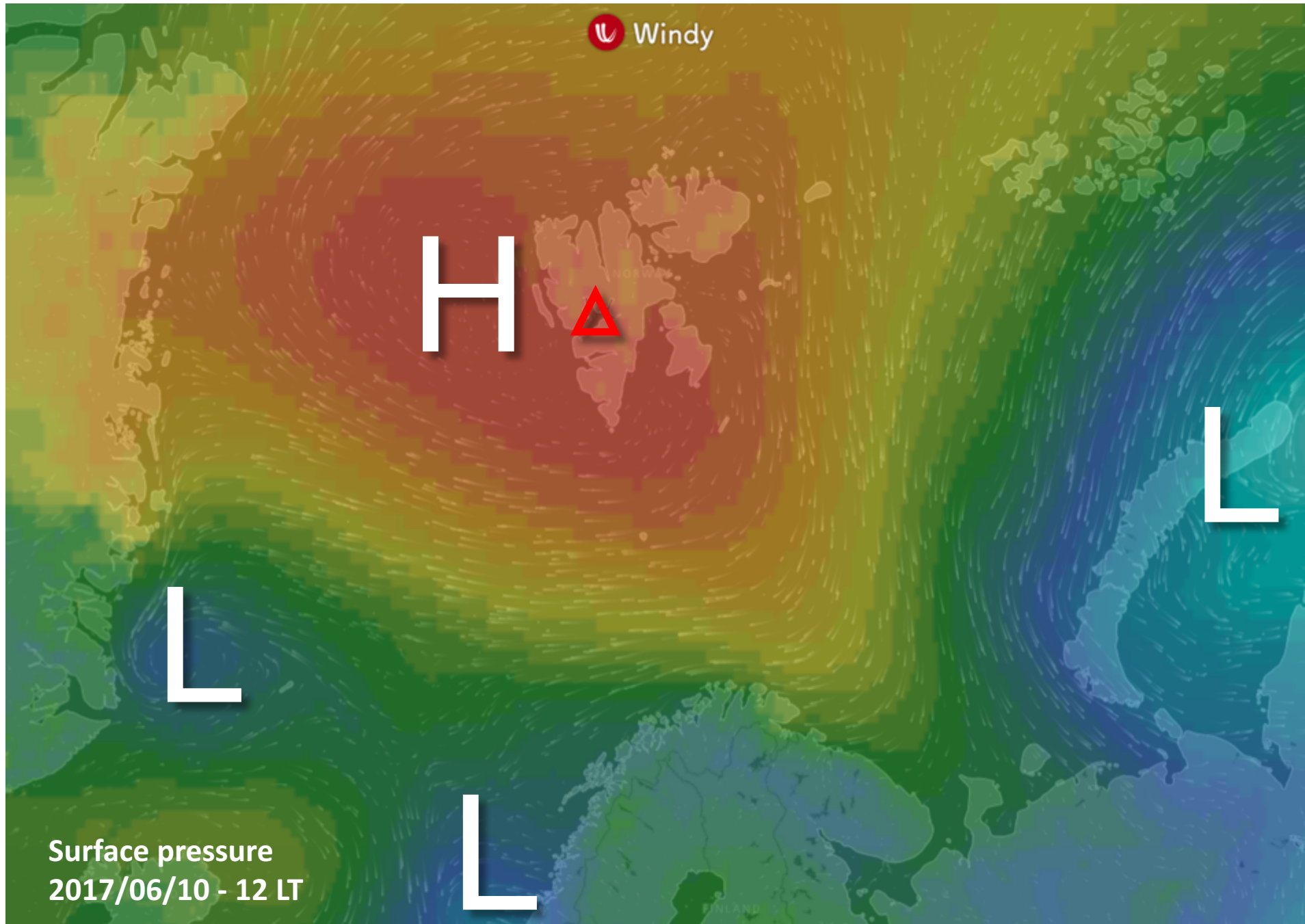
Init : Wed,07JUN2017 00Z

Valid: Fri,09JUN2017 12Z

2m Temperatur (°C)



General Situation Sat 10 June 2017

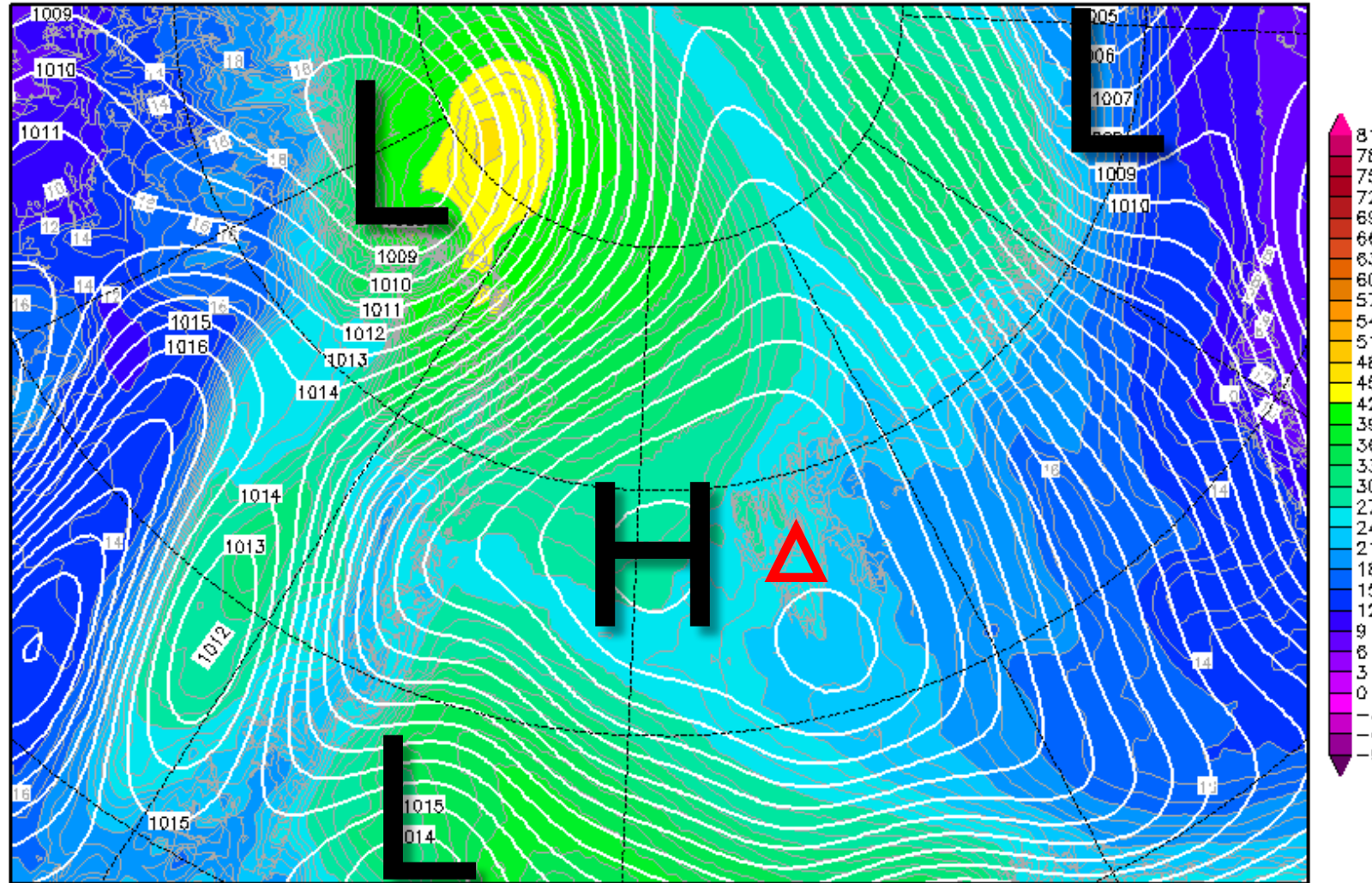


850-hPa Theta Equiv. 10 June 2017 @ 12 UTC

Init : Wed,07JUN2017 00Z

Valid: Sat,10JUN2017 12Z

Bodendruck (hPa) und 850 hPa Aeq.Pot.T. (Grad C)



Daten: GFS-Modell des amerikanischen Wetterdienstes

(C) Wetterzentrale

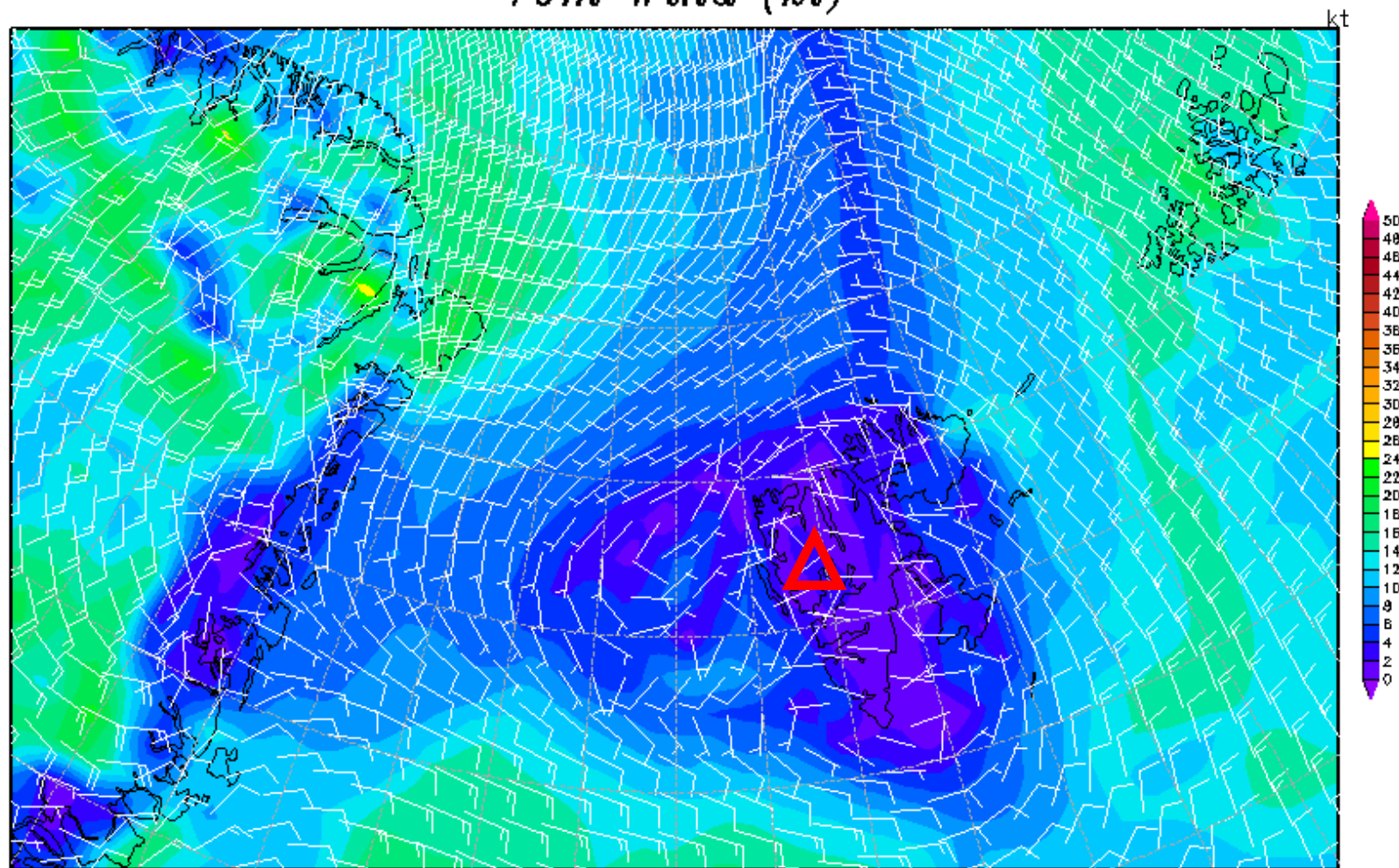
www.wetterzentrale.de

10m wind 10 June 2017 @ 12 UTC

Init : Wed,07JUN2017 00Z

Valid: Sat,10JUN2017 12Z

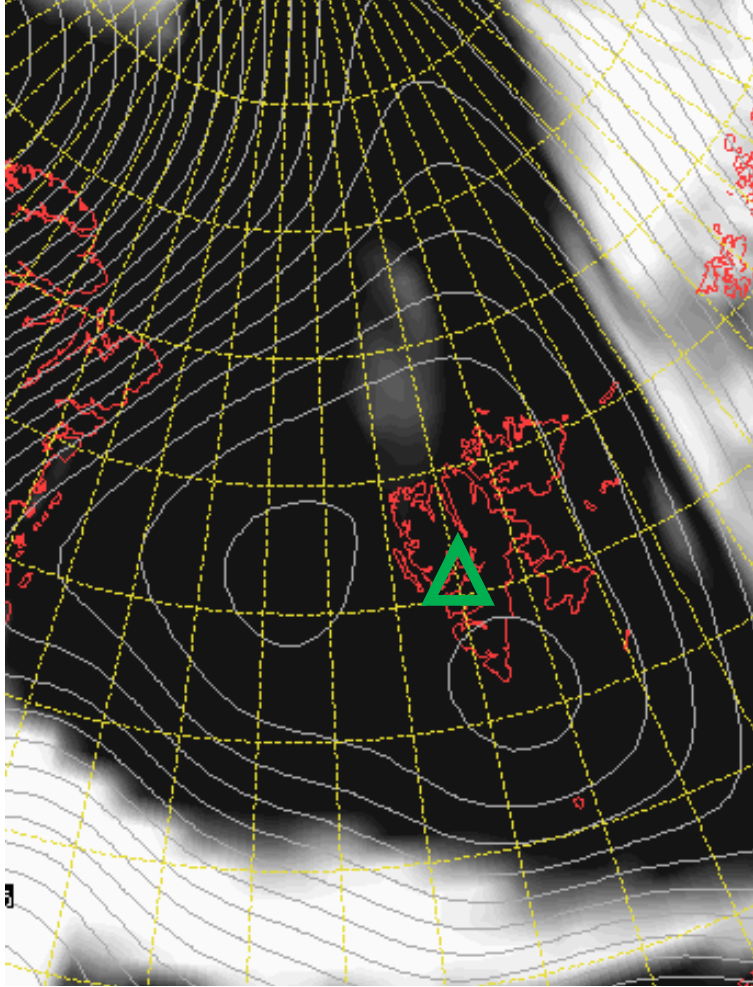
10m Wind (kt)



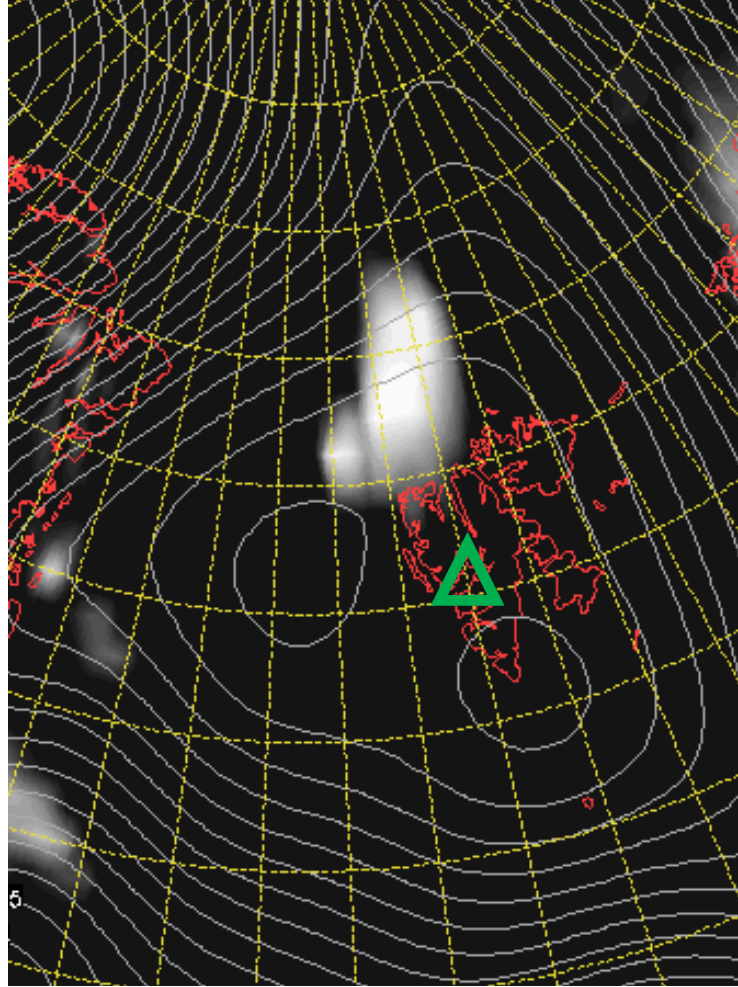
Daten: GFS-Modell des amerikanischen Wetterdienstes
(C) Wetterzentrale
www.wetterzentrale.de

Cloud Cover 10 June 2017 @ 12 UTC

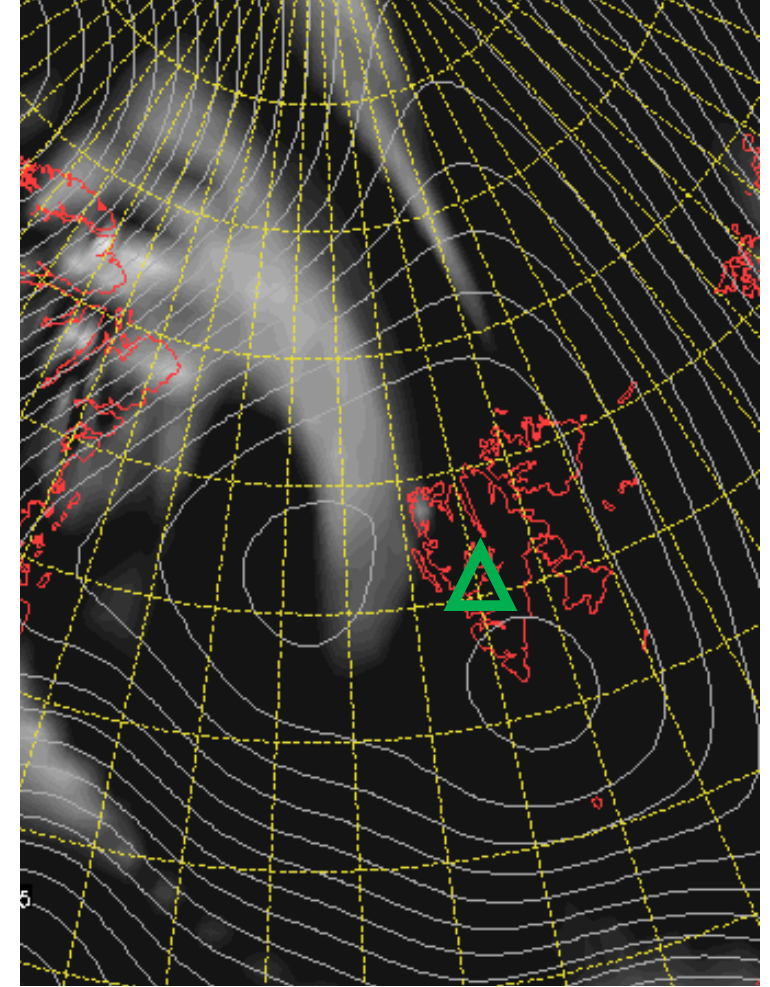
L



M



H

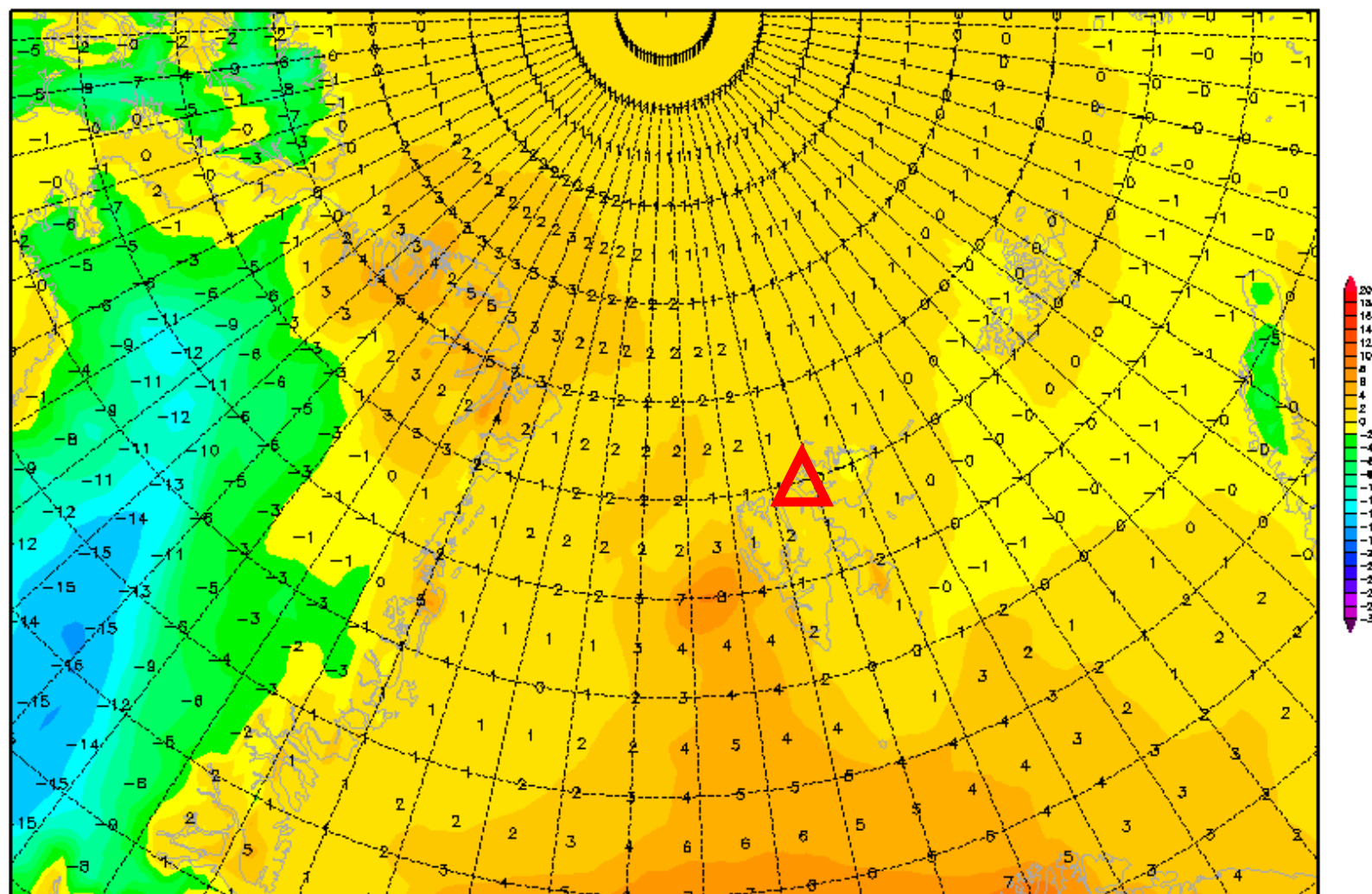


2-m temperature 10 June 2017 @ 12 UTC

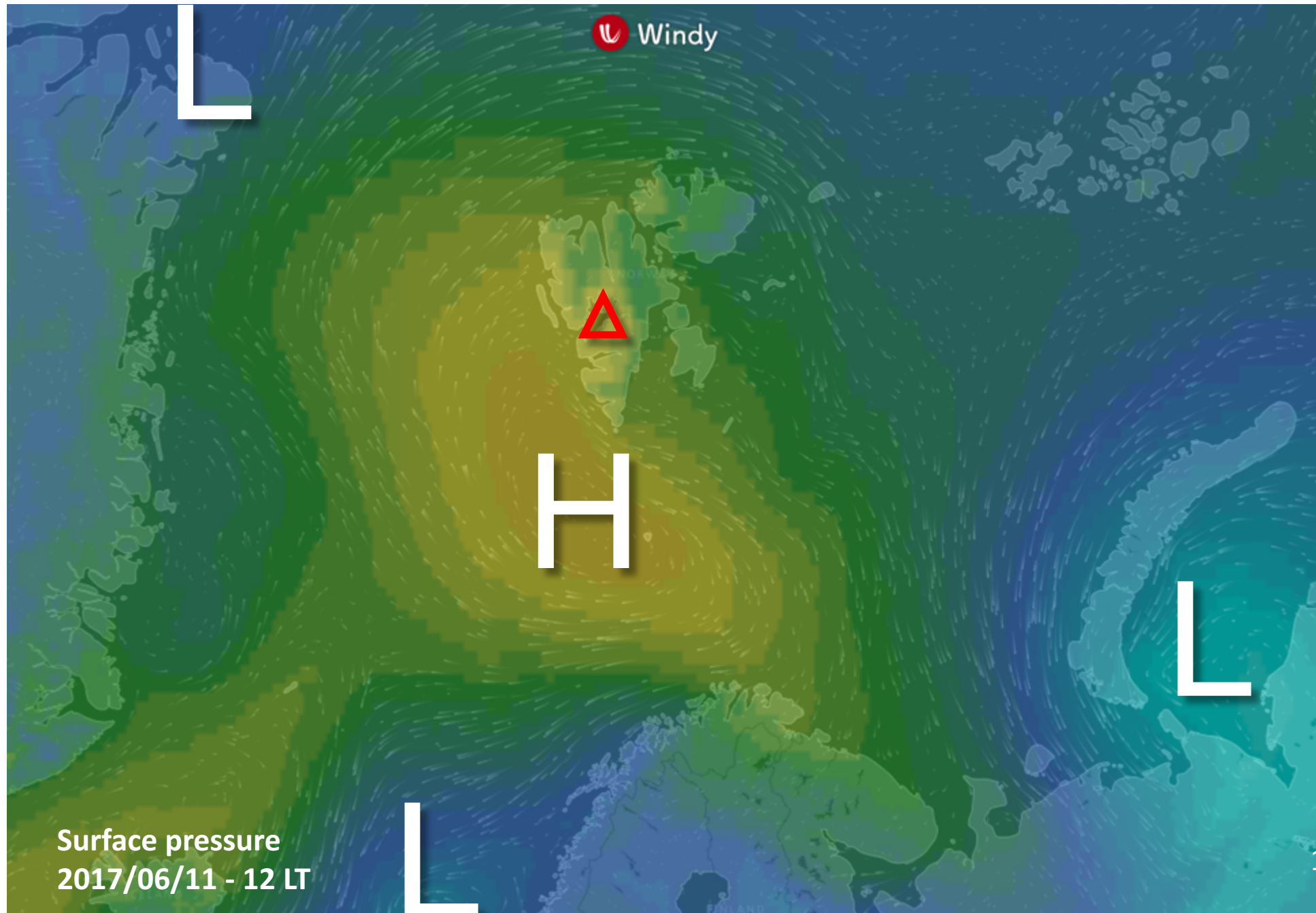
Init : Wed,07JUN2017 00Z

Valid: Sat,10JUN2017 12Z

2m Temperatur (°C)



General Situation Sun 11 June 2017

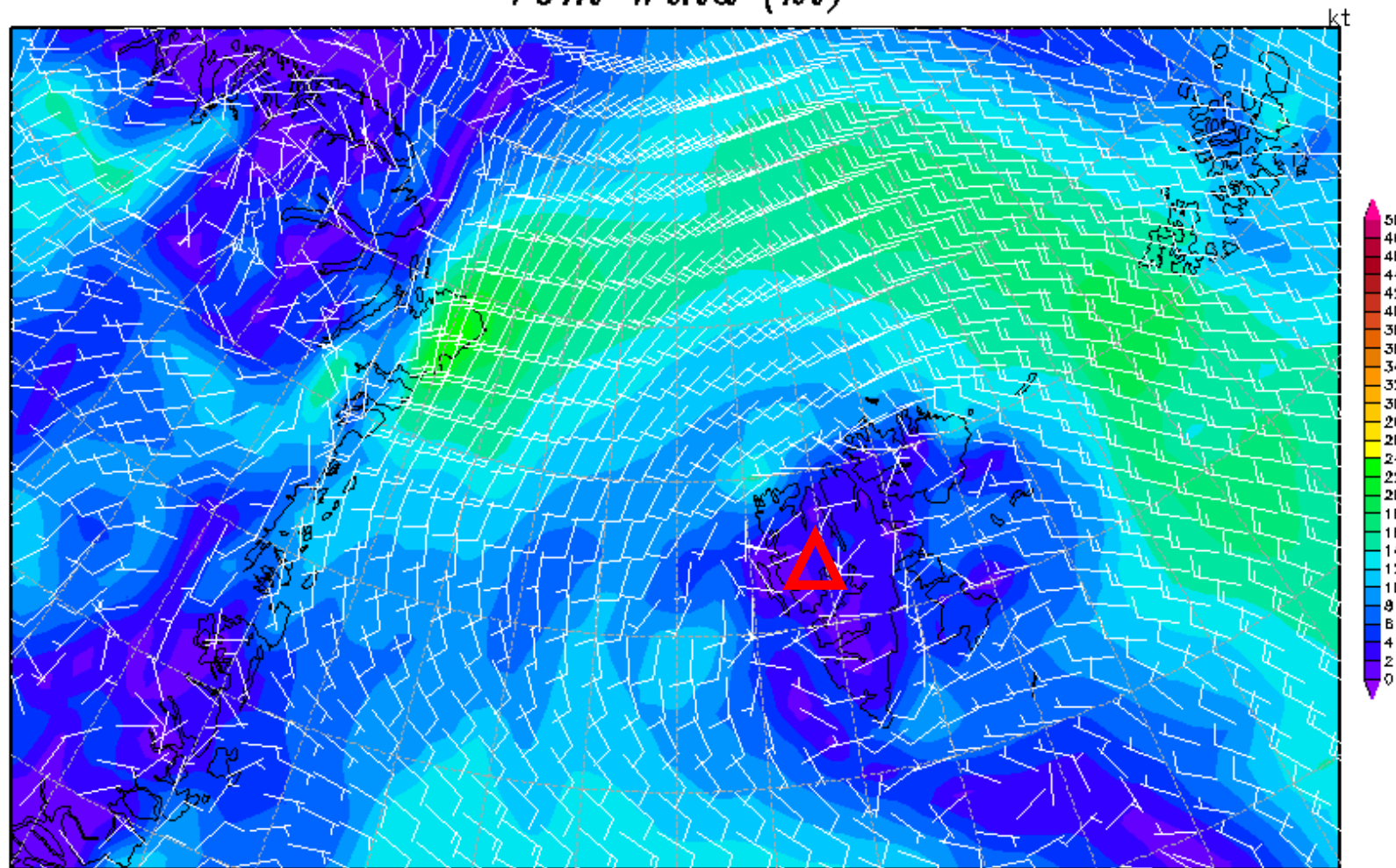


10m wind 10 June 2017 @ 12 UTC

Init : Wed,07JUN2017 00Z

Valid: Sun,11JUN2017 12Z

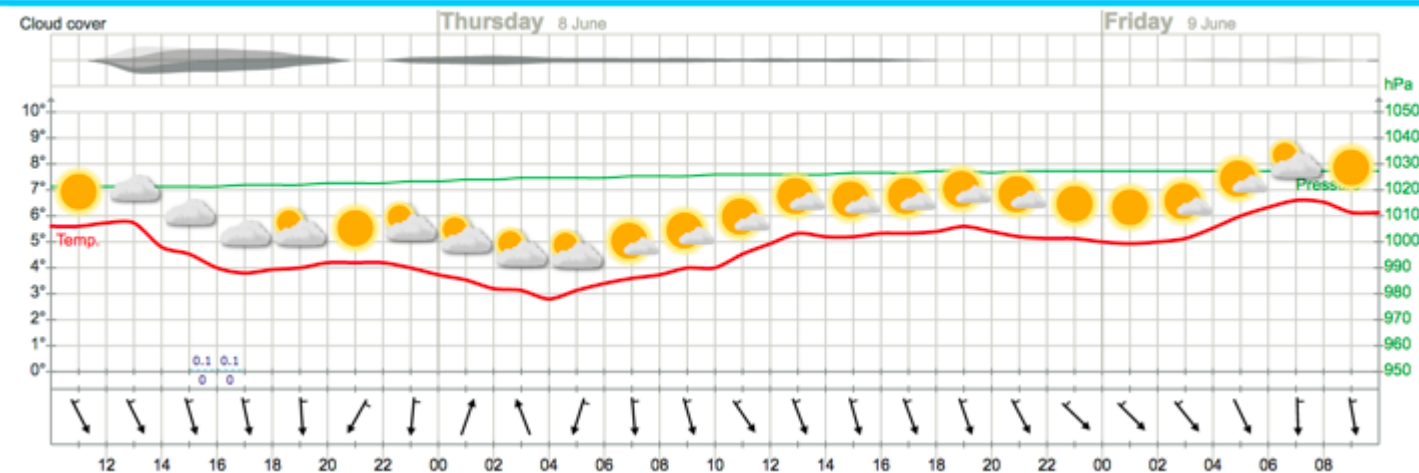
10m Wind (kt)



Daten: GFS-Modell des amerikanischen Wetterdienstes
(C) Wetterzentrale
www.wetterzentrale.de

Outlook – Meteogram

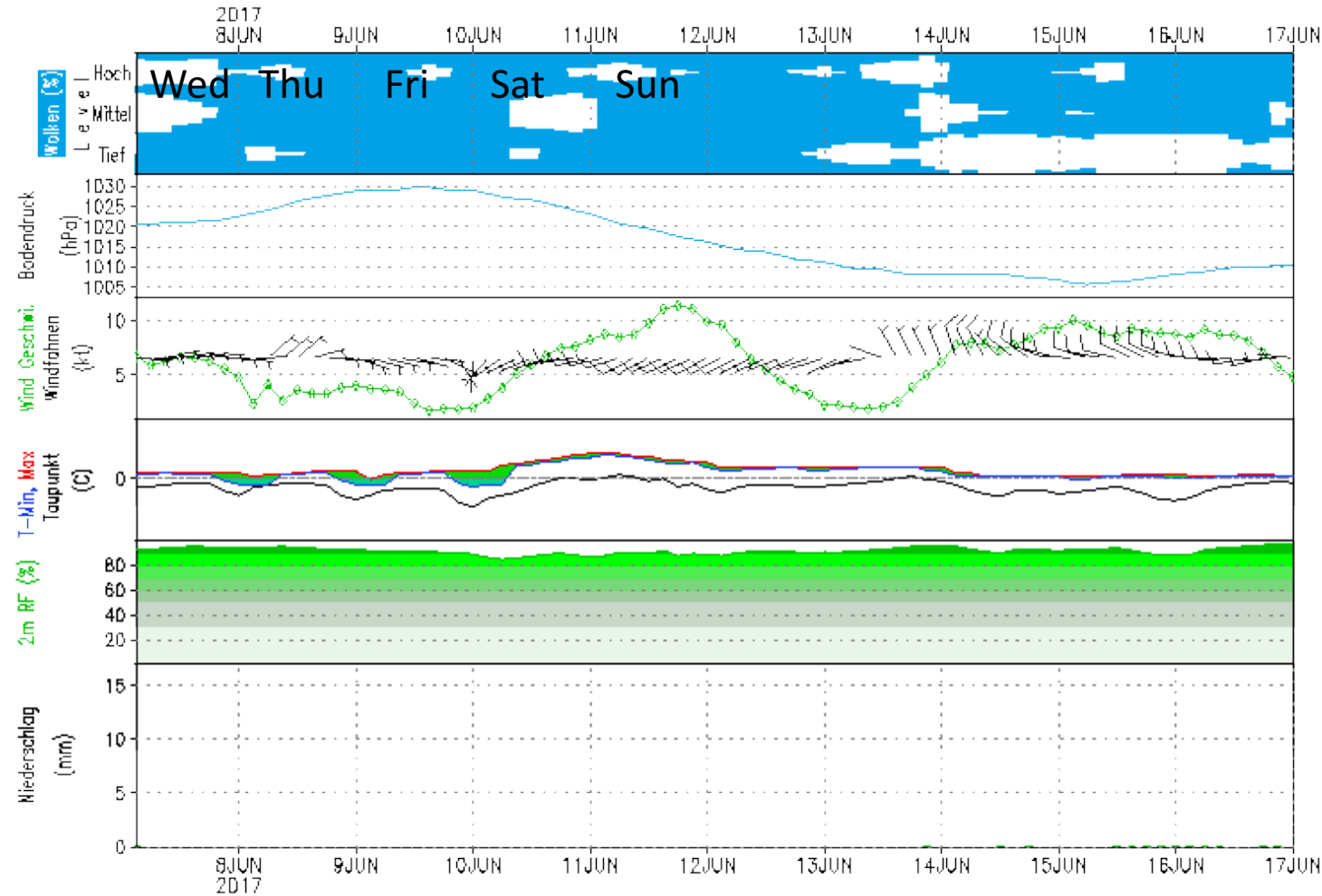
Detailed meteogram, next 48 hours



GFS – Meteogramm

Lon: 15.0 Lat: 81.0 Hgt: 0m

Lauf: 00Z



Heute kein Sonnenaufgang
Heute kein Sonnenuntergang

www.wetterzentrale.de

Outlook – Meteogram Polarstern

