

Weather briefing

ACLOUD Longyearbyen, Svalbard

Mon 05 June 2017 – **Tue 06 June** – Thu 8 June 2017

Summary

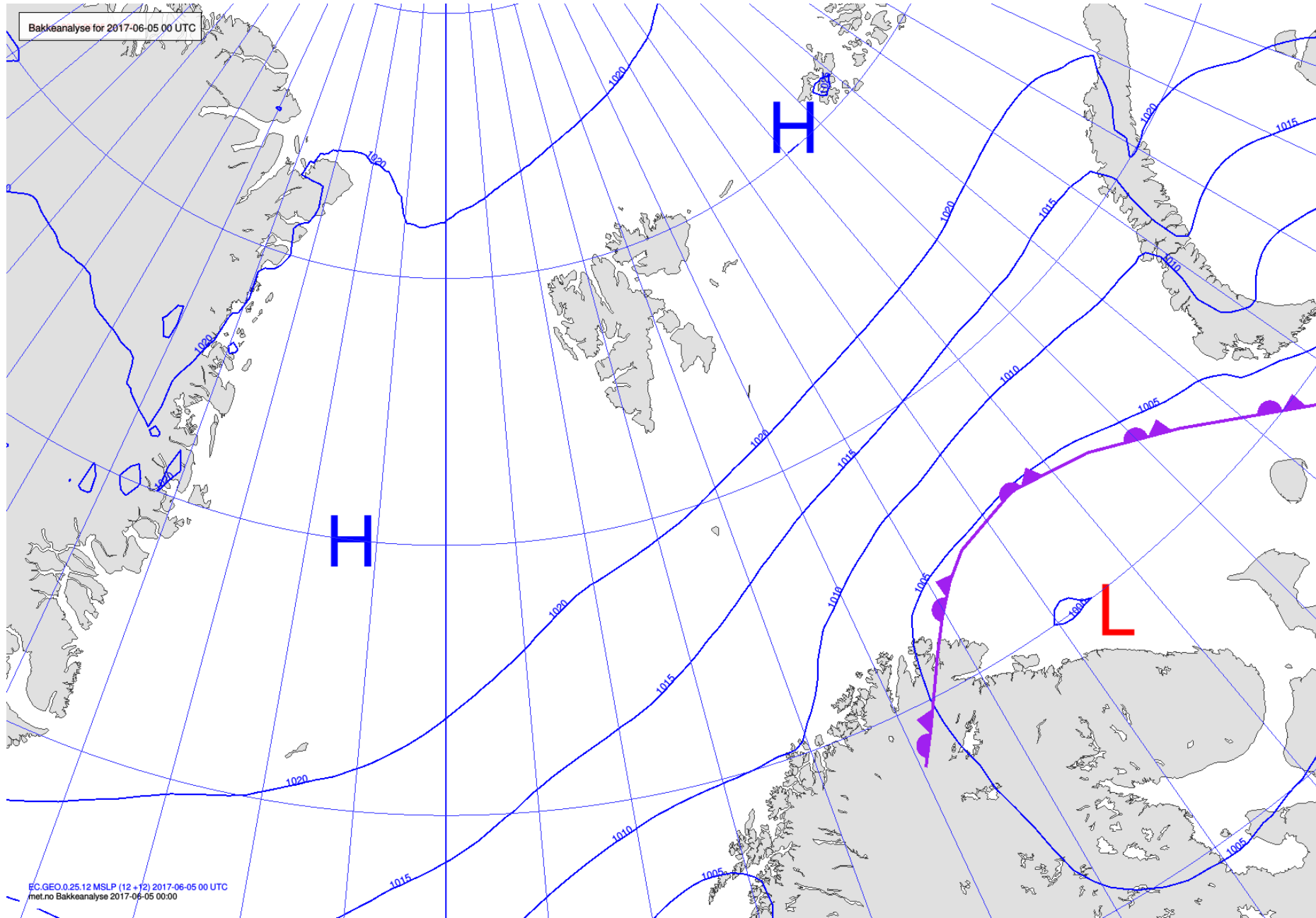
The high pressure system has shifted north to the direct west of Spitsbergen and brings us northerly winds over the open water west. In the fjord wind speeds are low and vary from west to southwest. Low clouds can be found near the coast, stretching north. Some cirrus above.

Tomorrow low clouds can still be found north of Spitsbergen, while clouds in all levels come closer from the south, transported by a low.

The front will reach us approximately Tuesday morning.

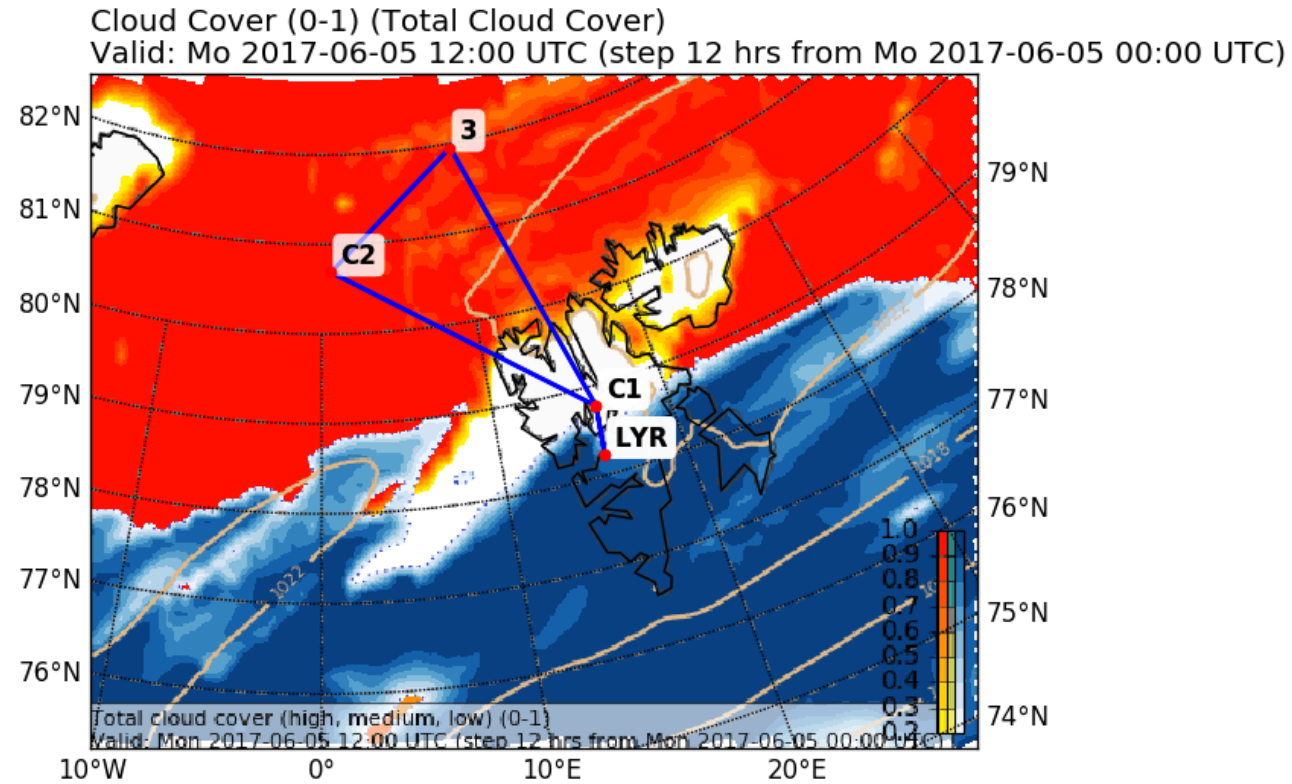
- Position of Polarstern (semi stationary) 81.94° N, 10.92° E

Analysis 05 June 2017 @ 00 UTC



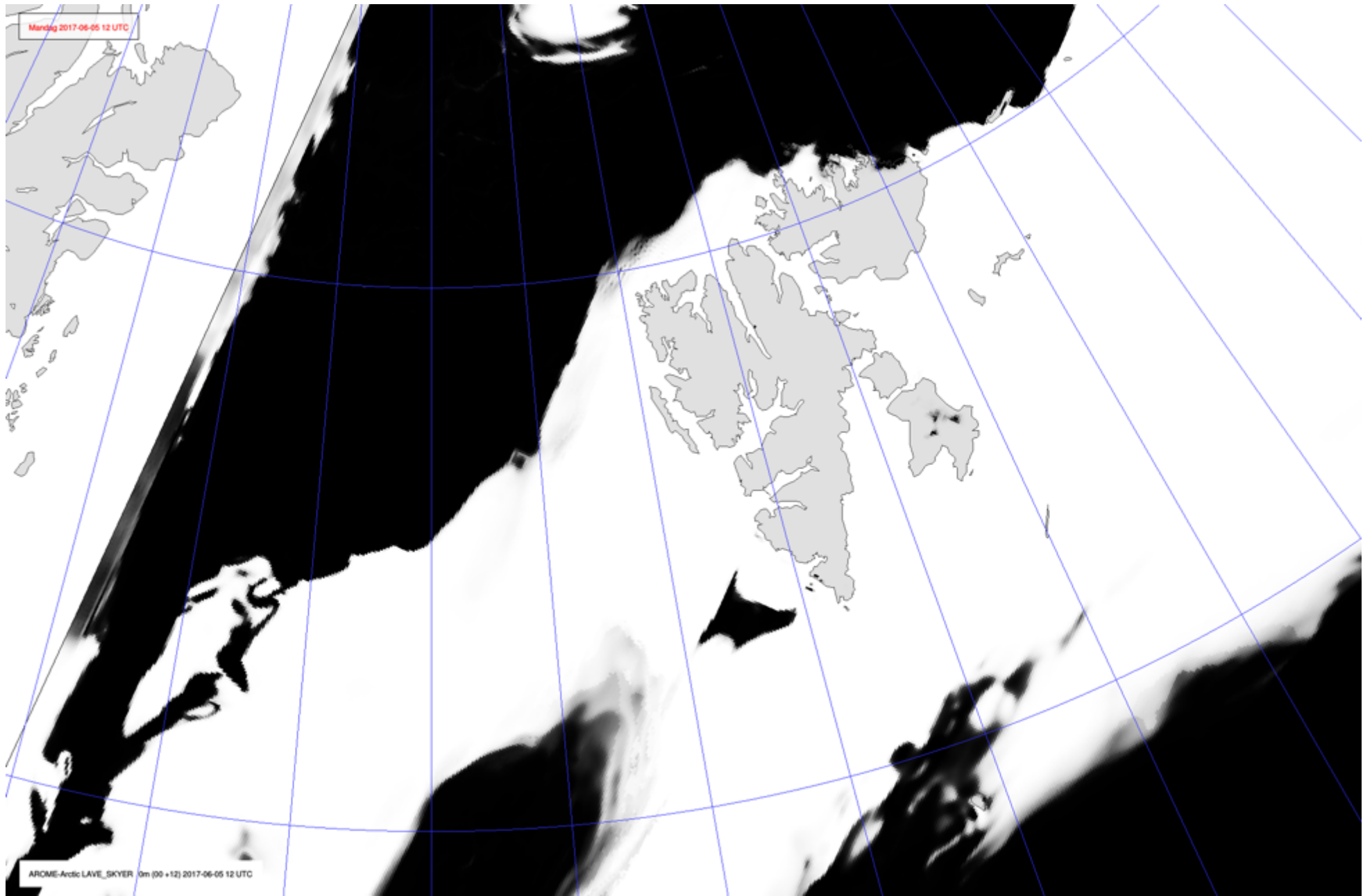
Clouds

Today 12 UTC



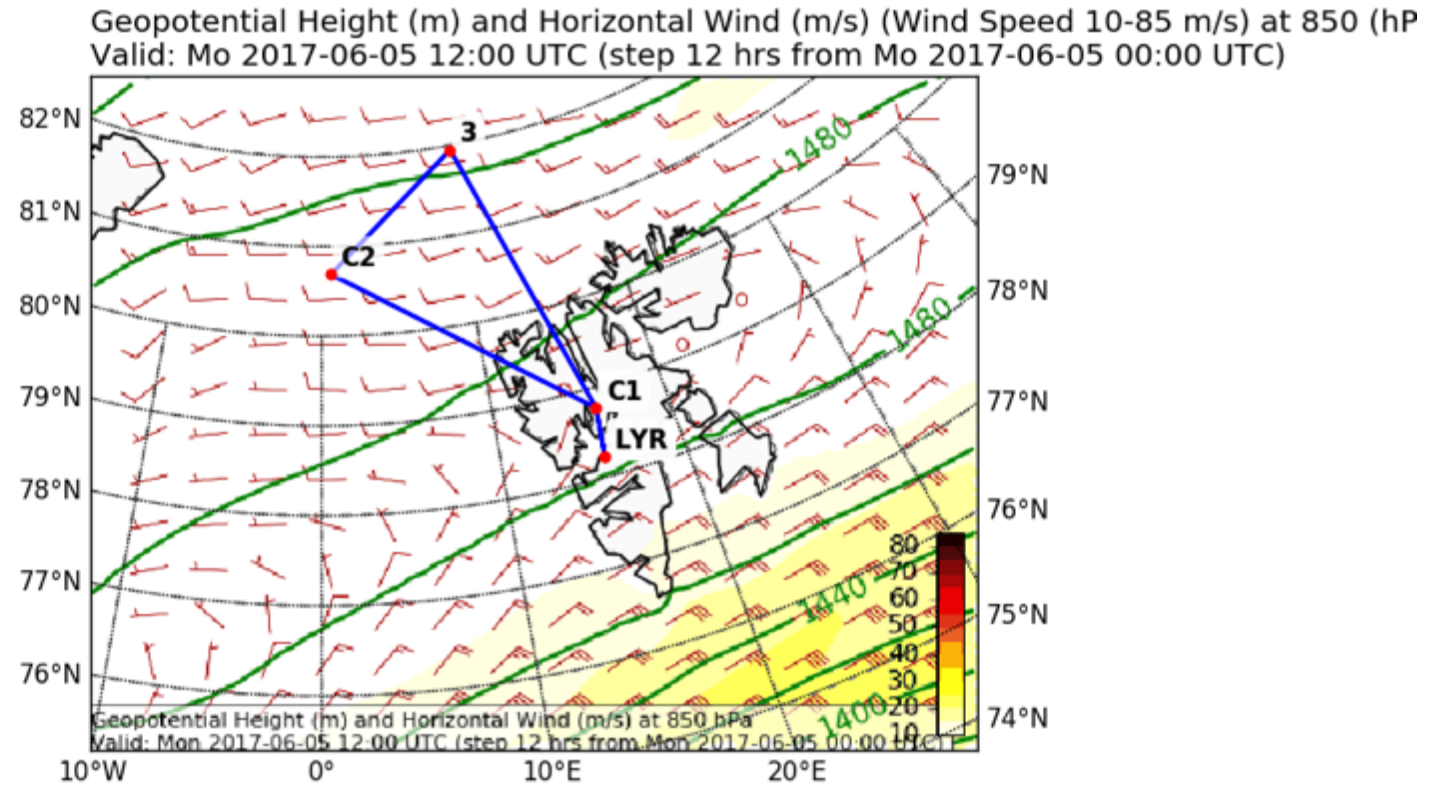
EPSG:77790000

Cloud 05 June 2017 @ 12 UTC



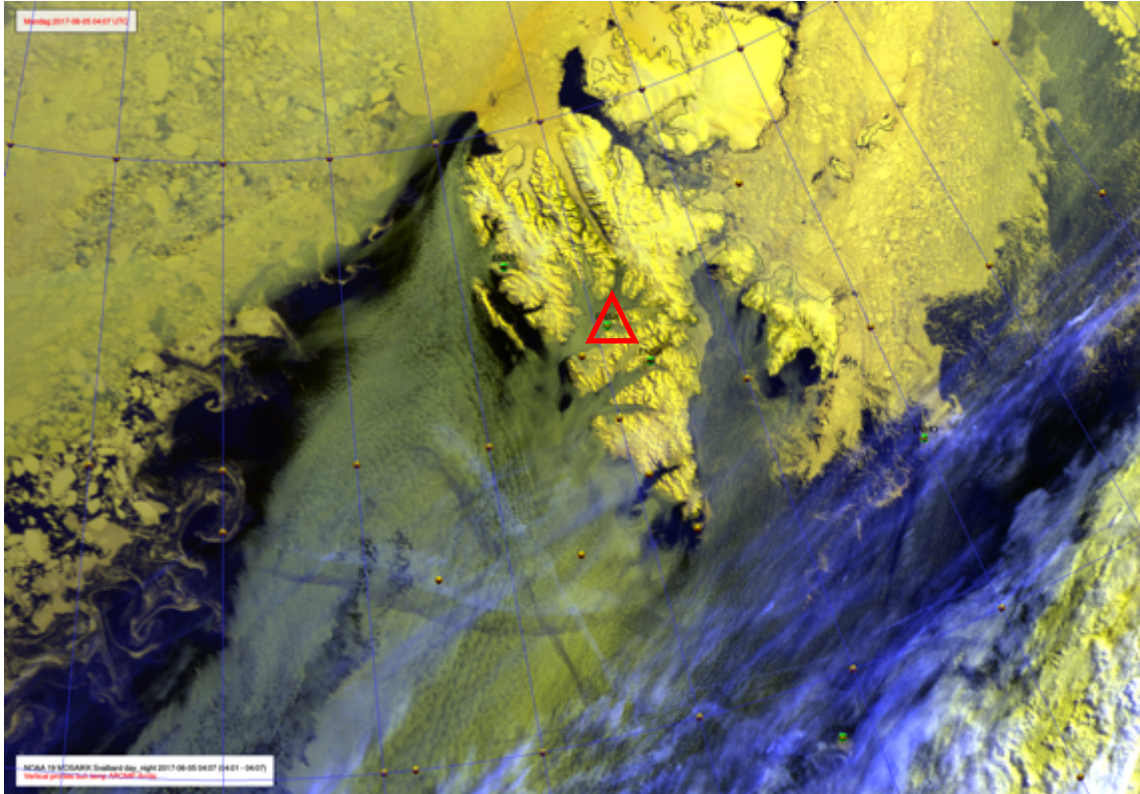
Wind

Today 12 UTC

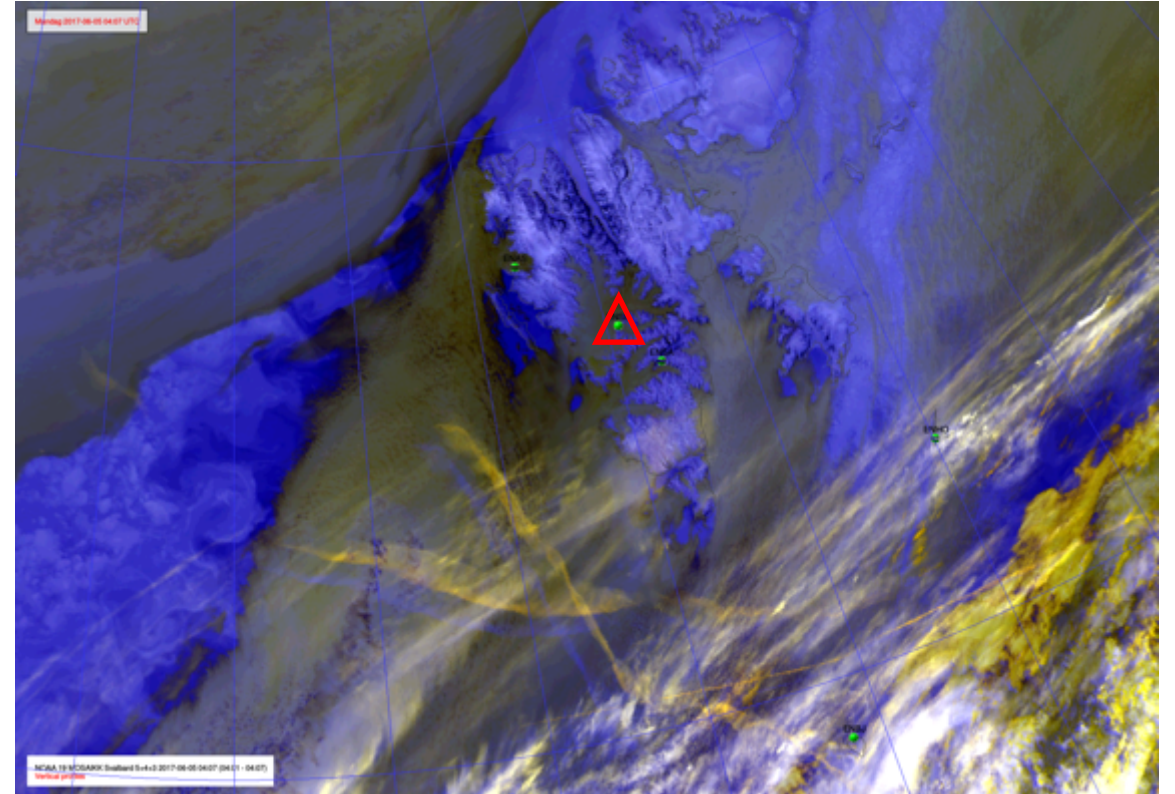


EPSG:77790000

NOAA-19 05 June 2017 @ 0407 UTC

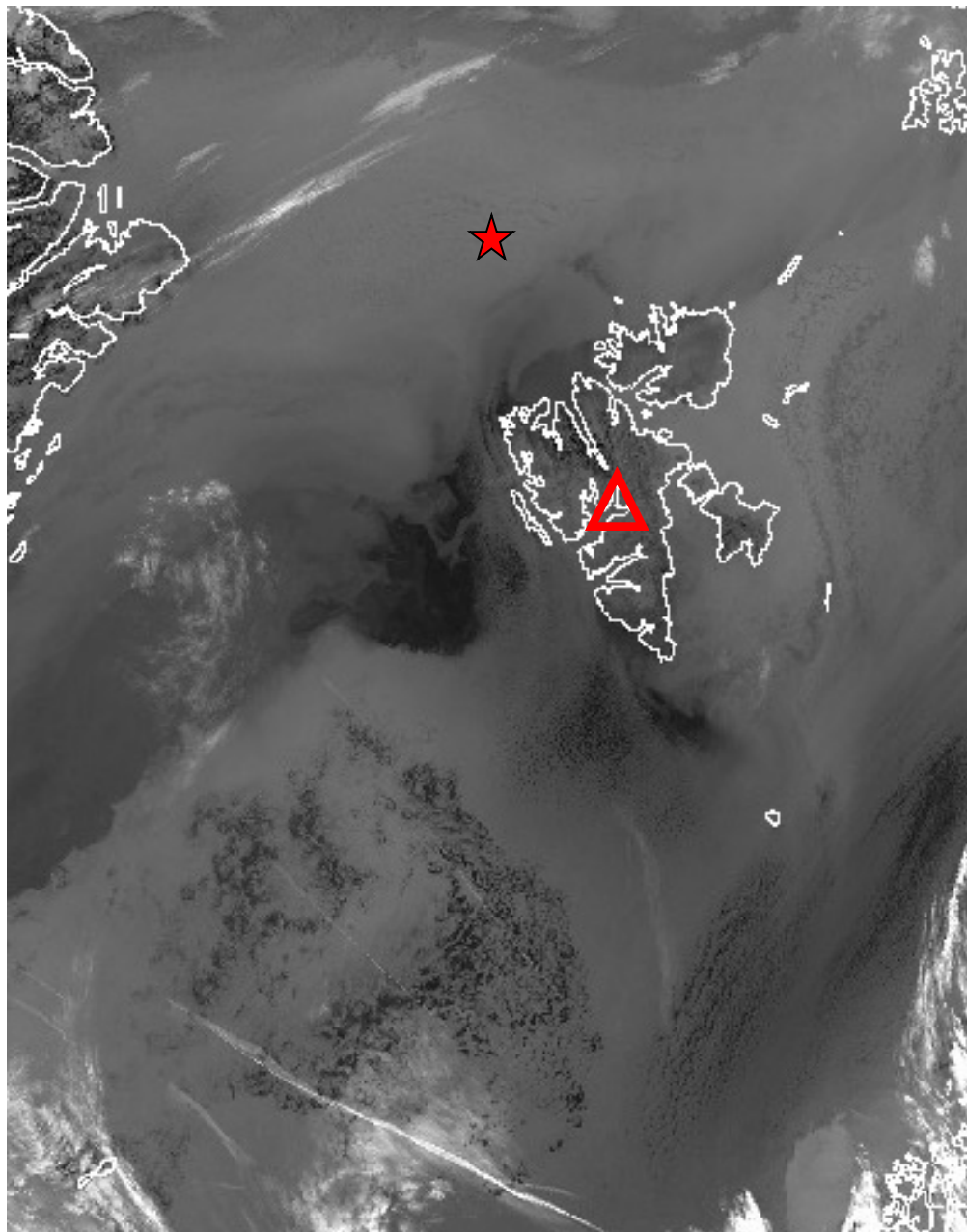


10.8 μm



IR, Ch 5+4+3

NOAA-19 04 June 2017 @ 0751 UTC



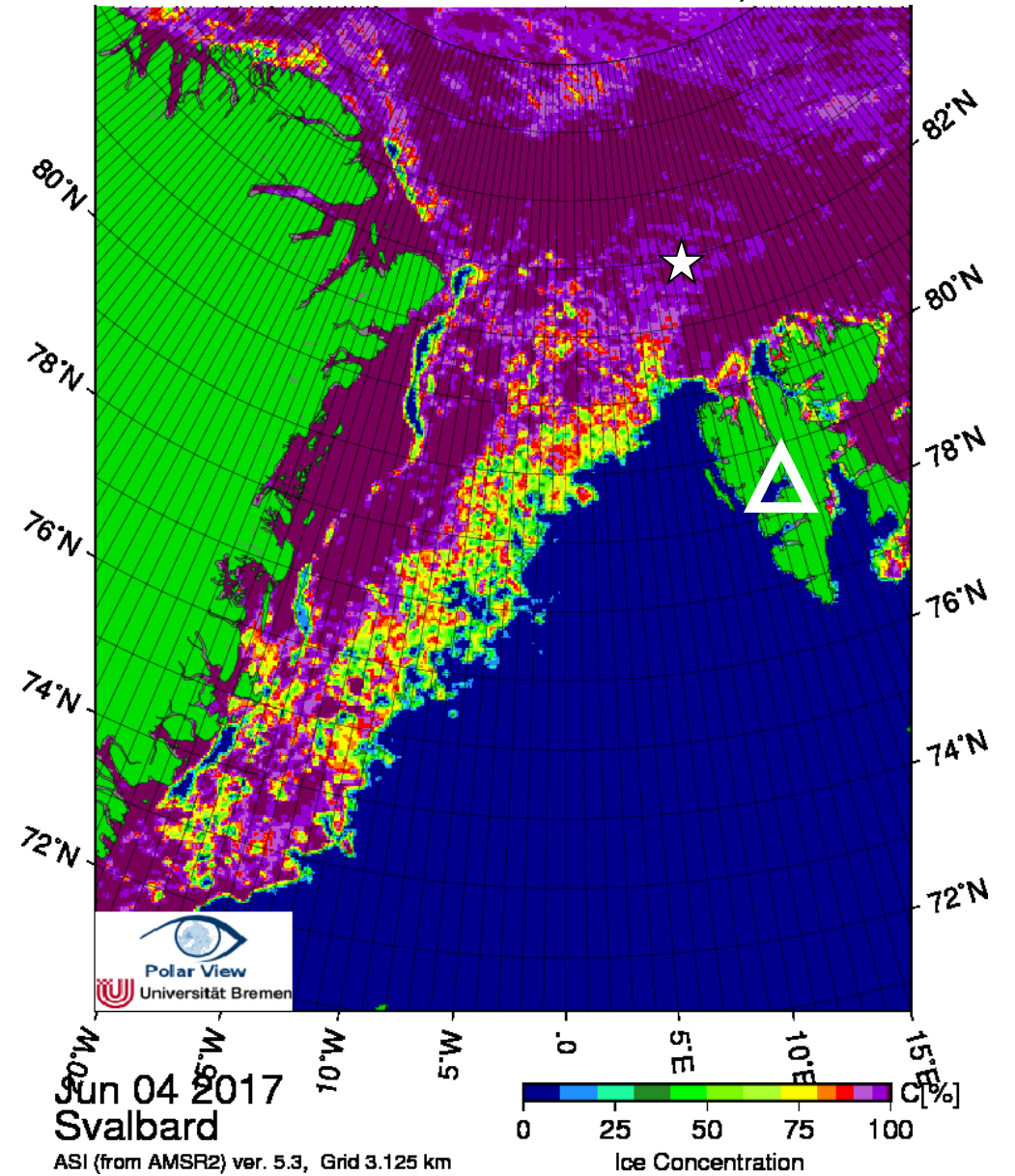
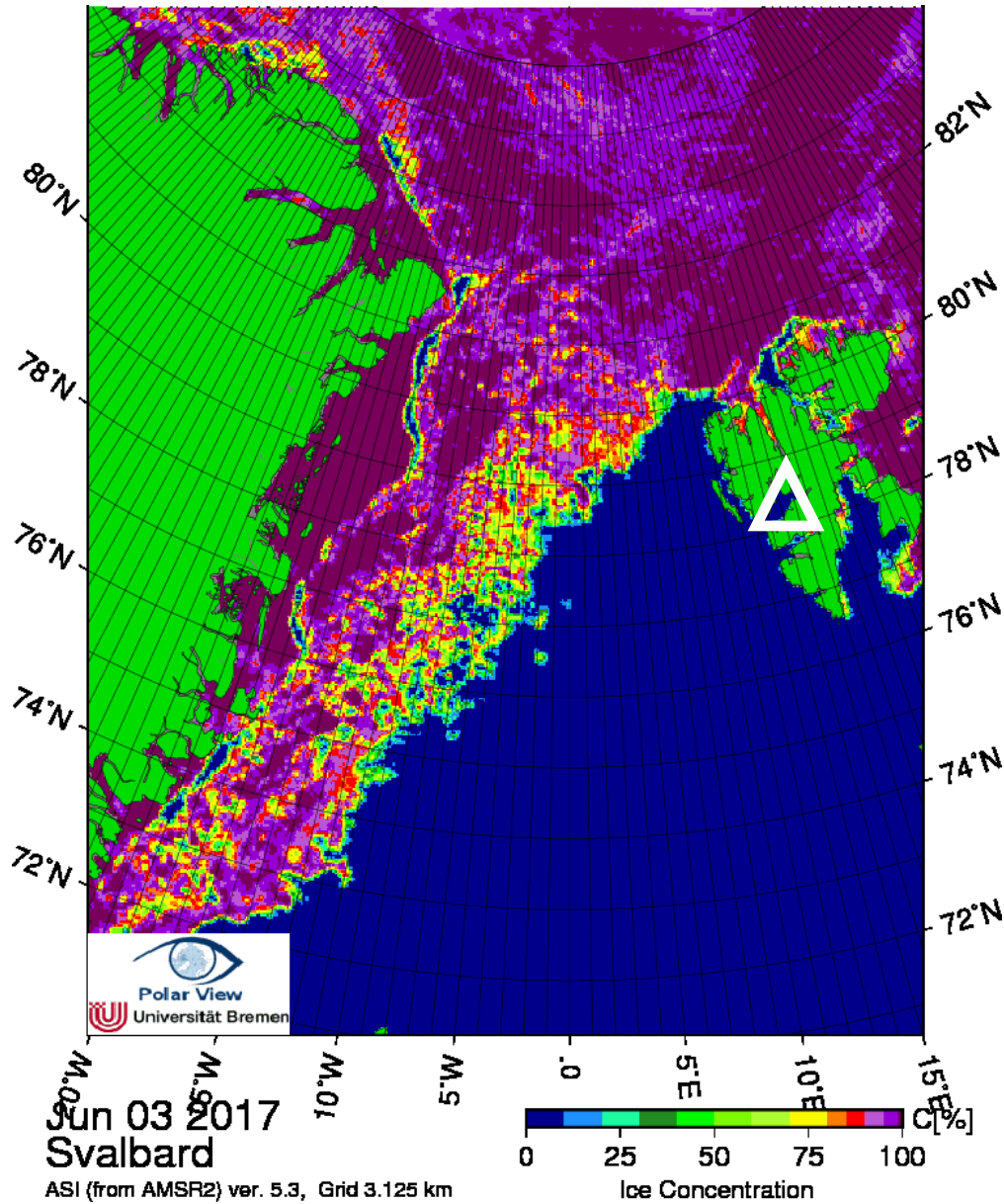
★ RV Polarstern (81.95° N, 10.46° E)

07:51

10.8 μm

Arctic sea ice 2 June & 3 June 2017

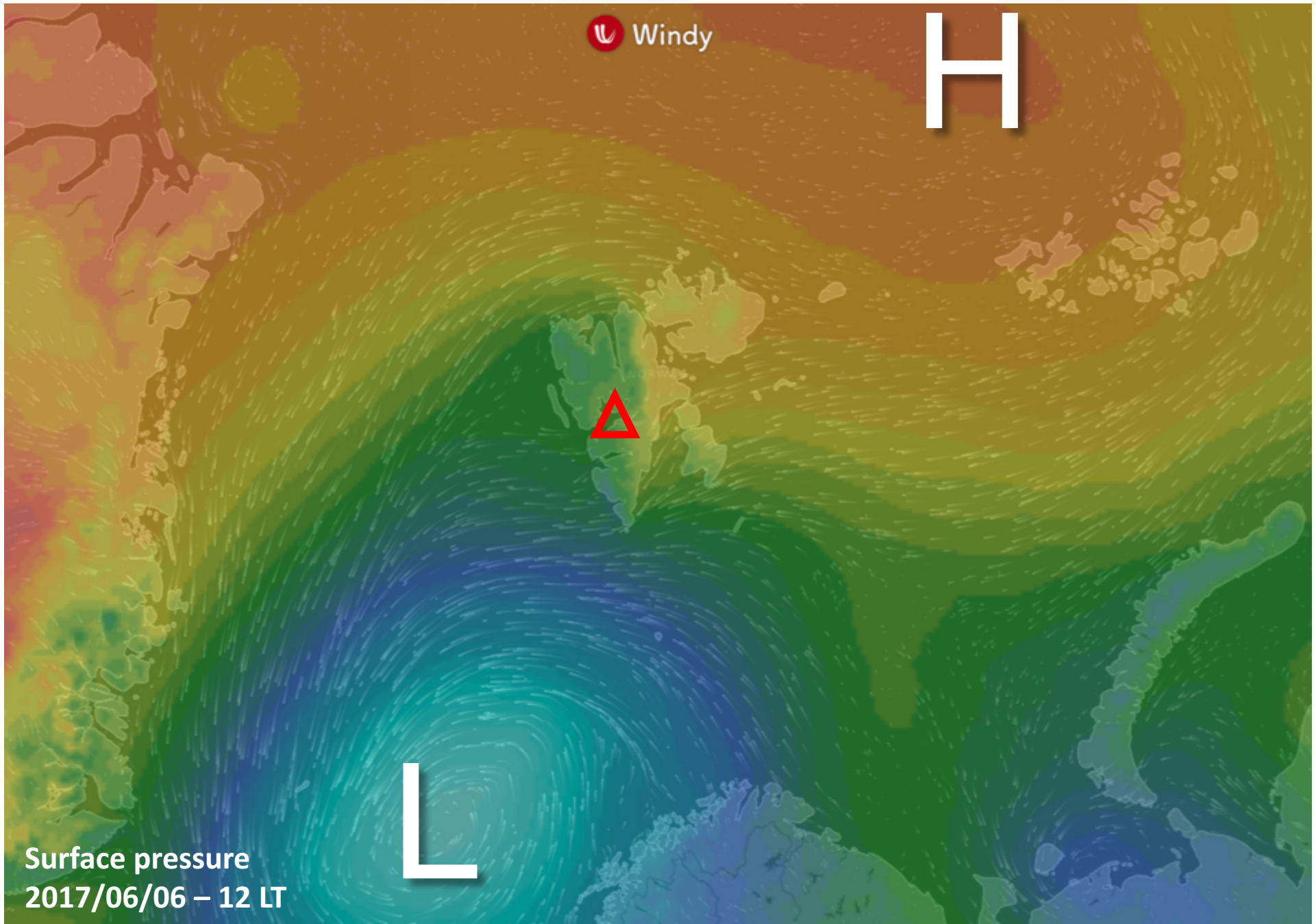
☆ RV Polarstern 5 June 81.94° N, 10.92° E



Tomorrow

Tue 06 June 2017

General Situation Tue 06 June 2017

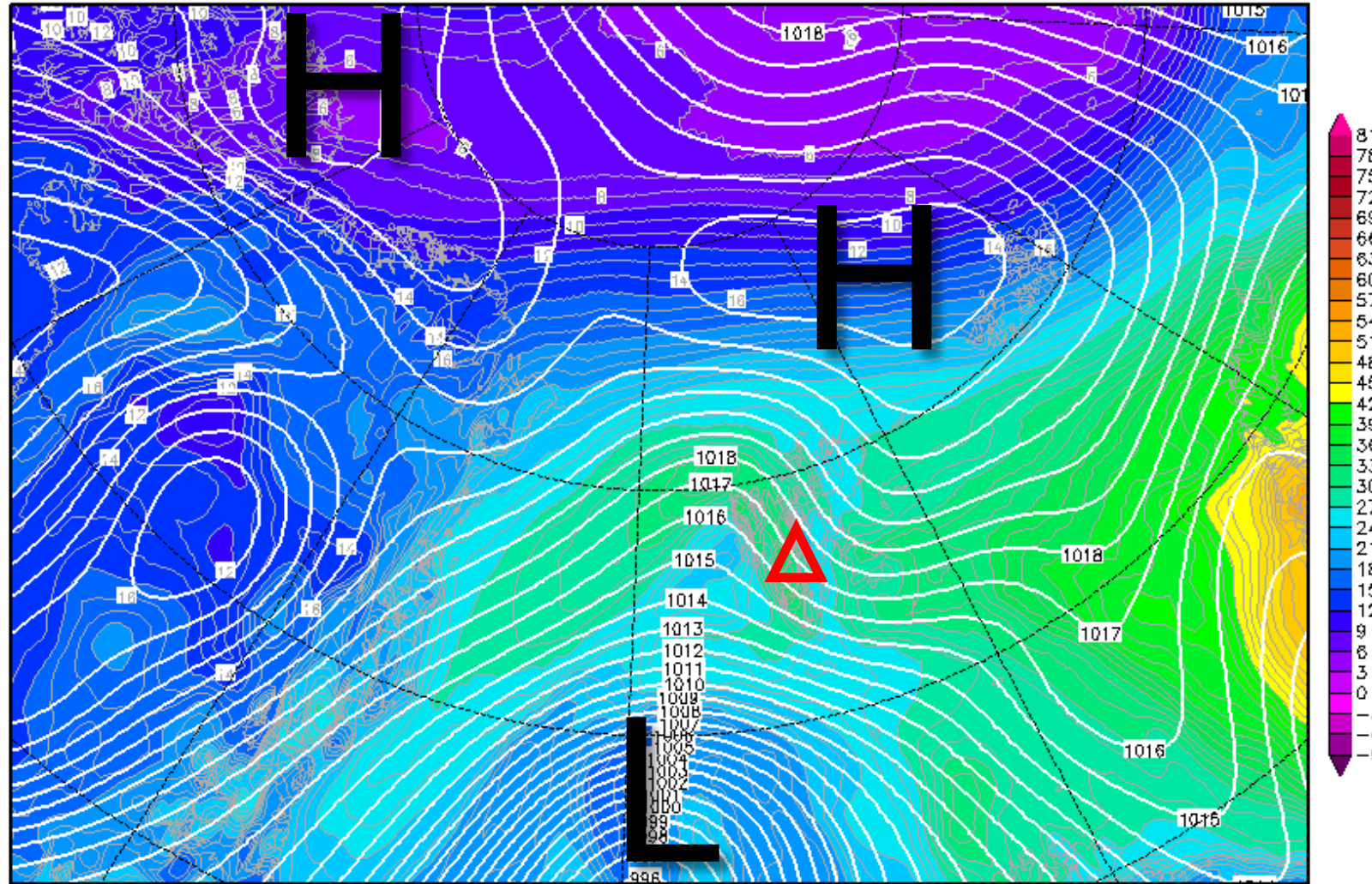


850-hPa Theta Equiv. 06 June 2017 @ 12 UTC

Init : Mon,05JUN2017 00Z

Valid: Tue,06JUN2017 12Z

Bodendruck (hPa) und 850 hPa Aeq.Pot.T. (Grad C)



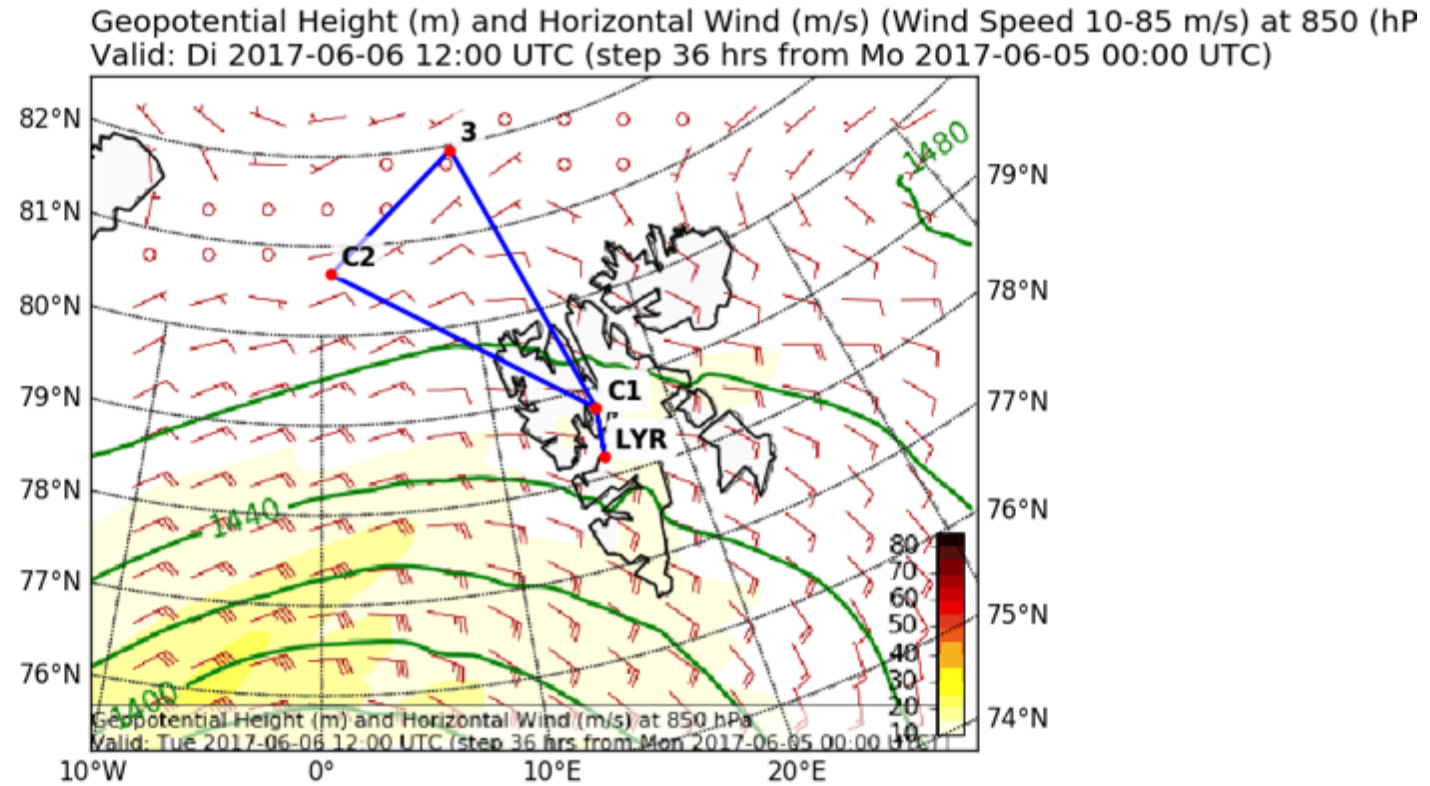
Daten: GFS-Modell des amerikanischen Wetterdienstes

(C) Wetterzentrale

www.wetterzentrale.de

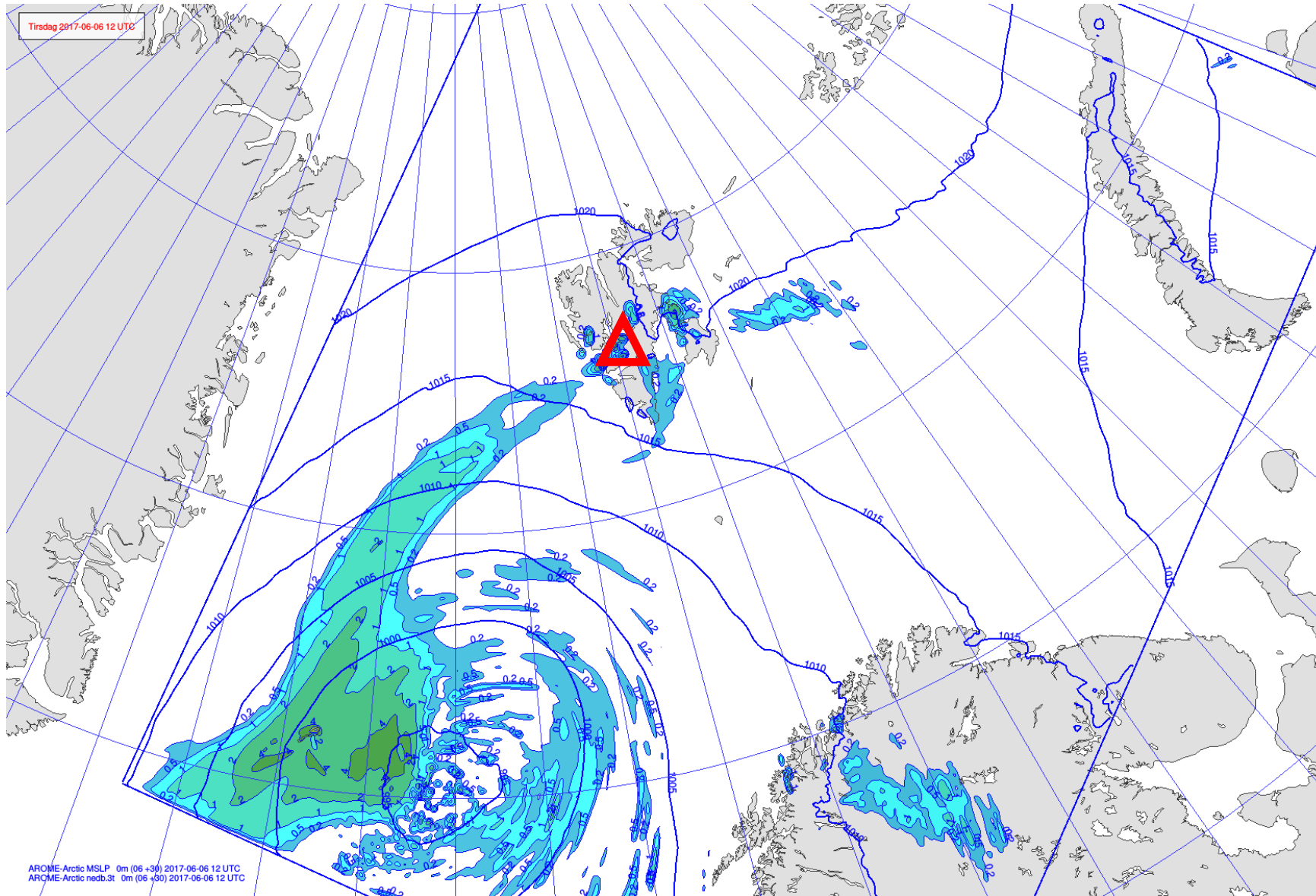
Wind

Tomorrow 12 UTC



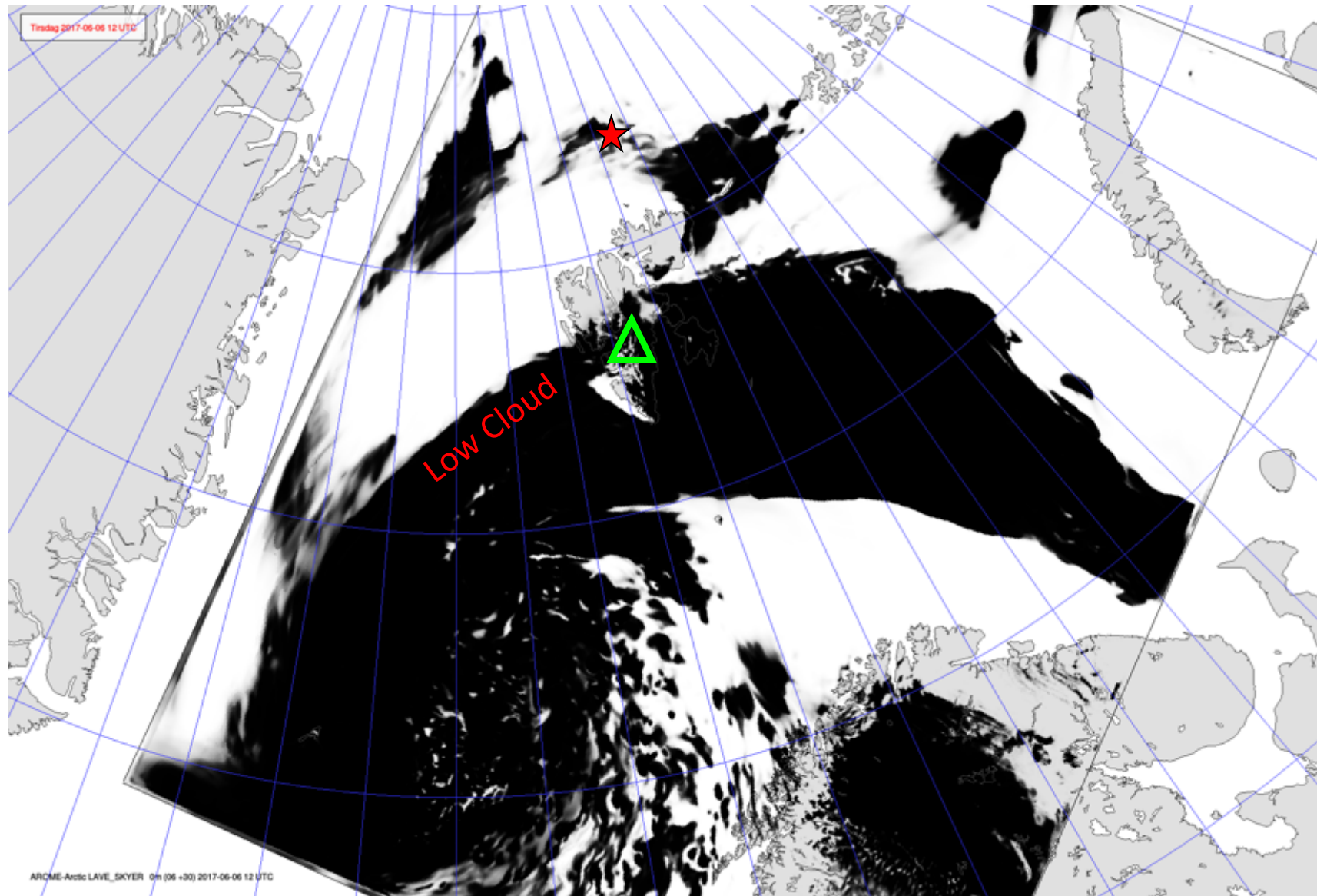
EPSG:77790000

Precipitation Wind 06 June 2017 @ 12 UTC



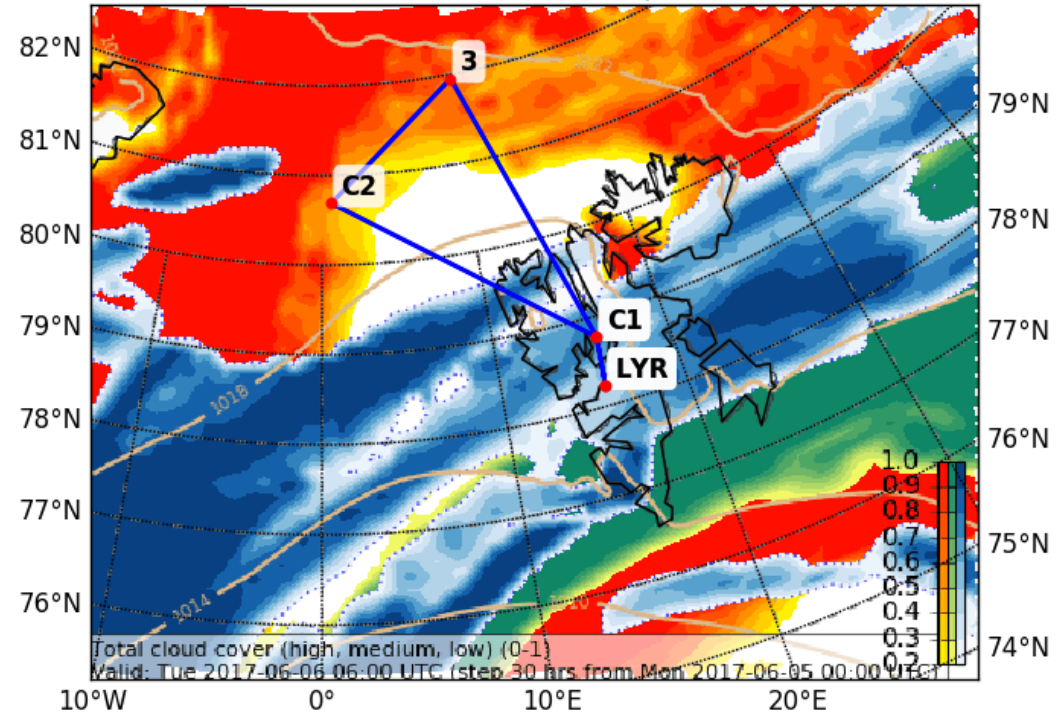
Low-level cloud cover 06 June 2017 @ 12 UTC

★ RV Polarstern (81.94° N, 10.92° E)

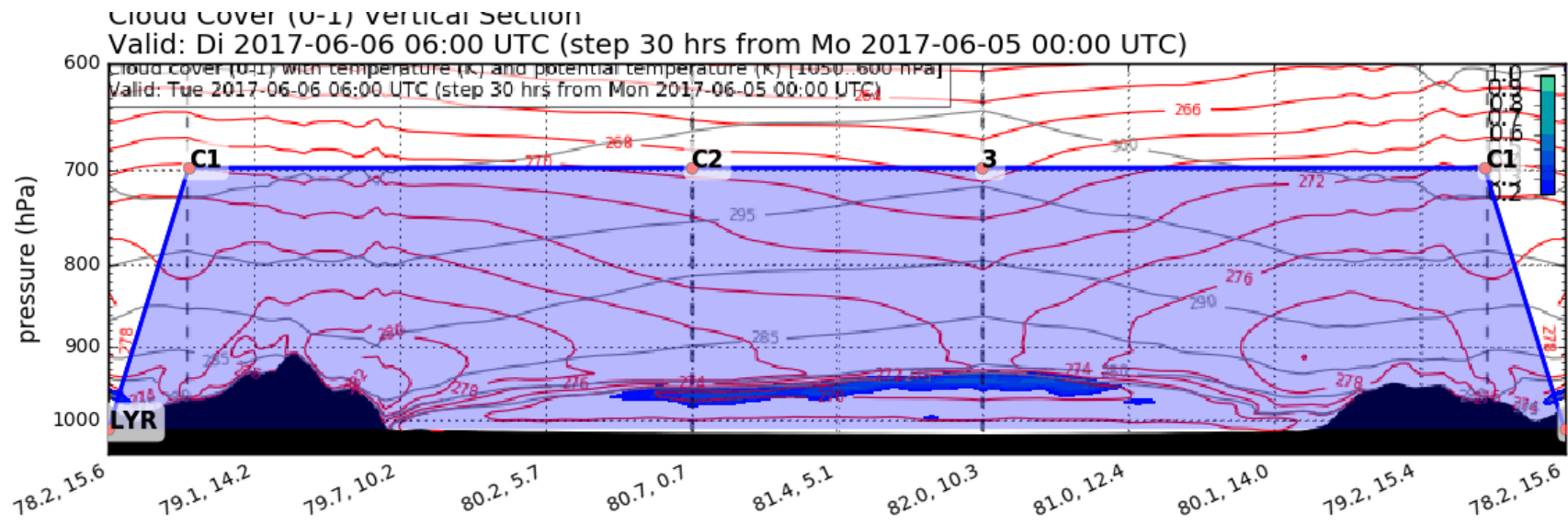


Forecast Tomorrow 06 UTC

Cloud Cover (0-1) (Total Cloud Cover)
Valid: Di 2017-06-06 06:00 UTC (step 30 hrs from Mo 2017-06-05 00:00 UTC)



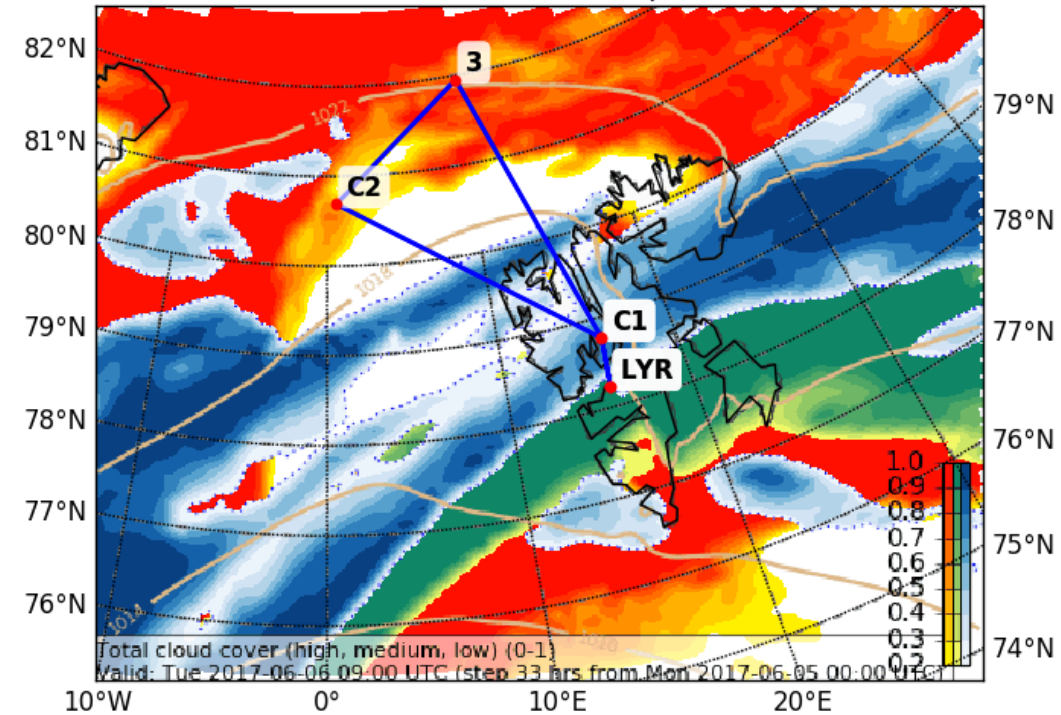
EPSG:77790000



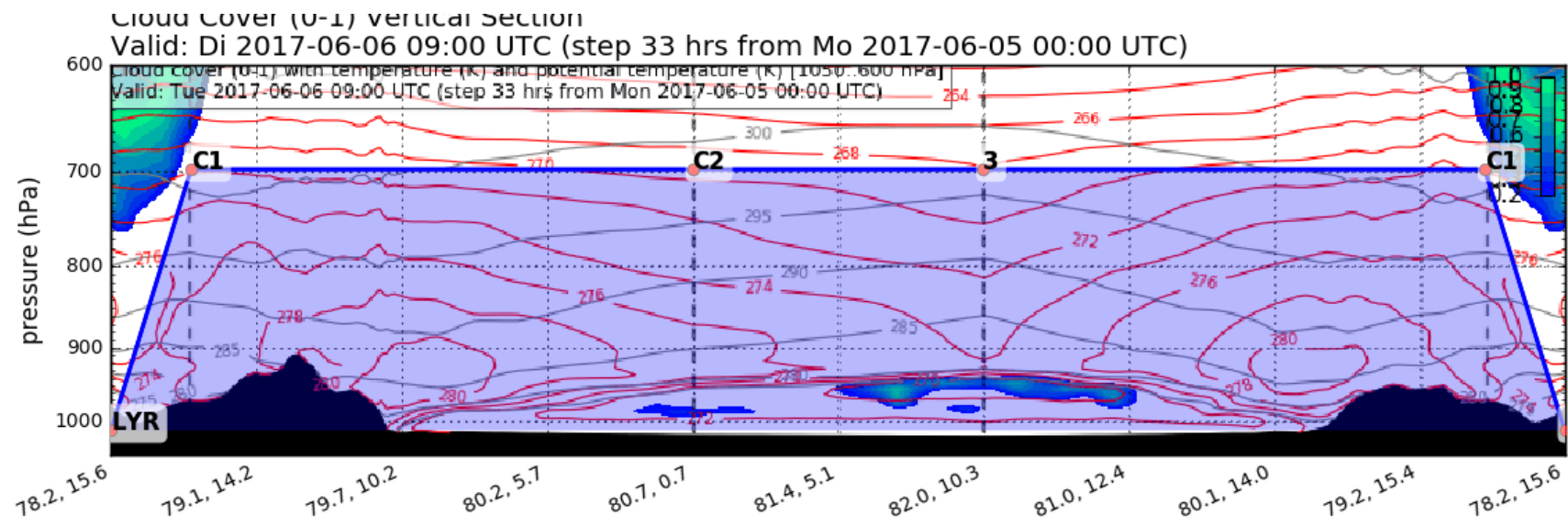
Forecast Tomorrow 09 UTC

Cloud Cover (0-1) (Total Cloud Cover)

Valid: Di 2017-06-06 09:00 UTC (step 33 hrs from Mo 2017-06-05 00:00 UTC)

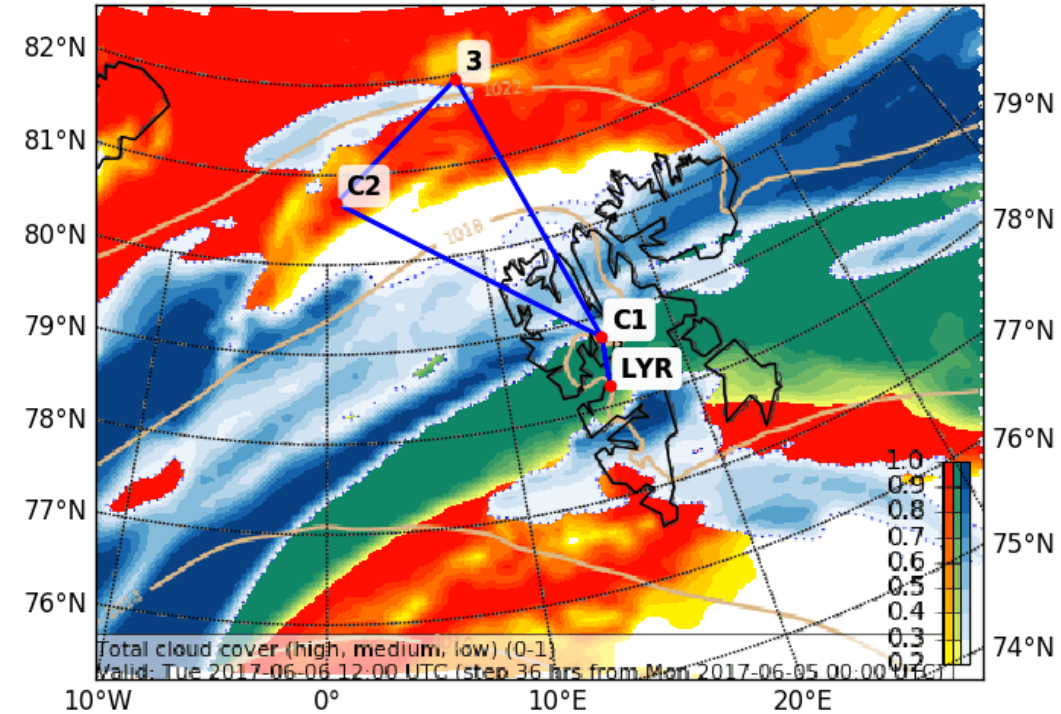


EPSG:77790000

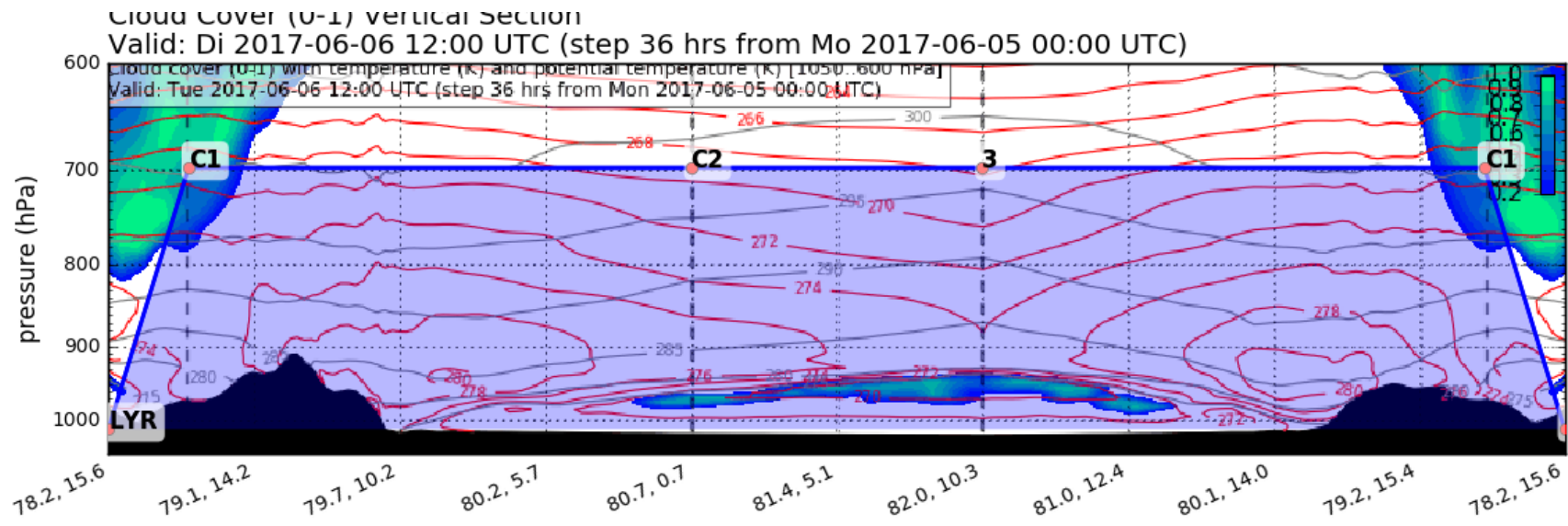


Forecast Tomorrow 12 UTC

Cloud Cover (0-1) (Total Cloud Cover)
Valid: Di 2017-06-06 12:00 UTC (step 36 hrs from Mo 2017-06-05 00:00 UTC)

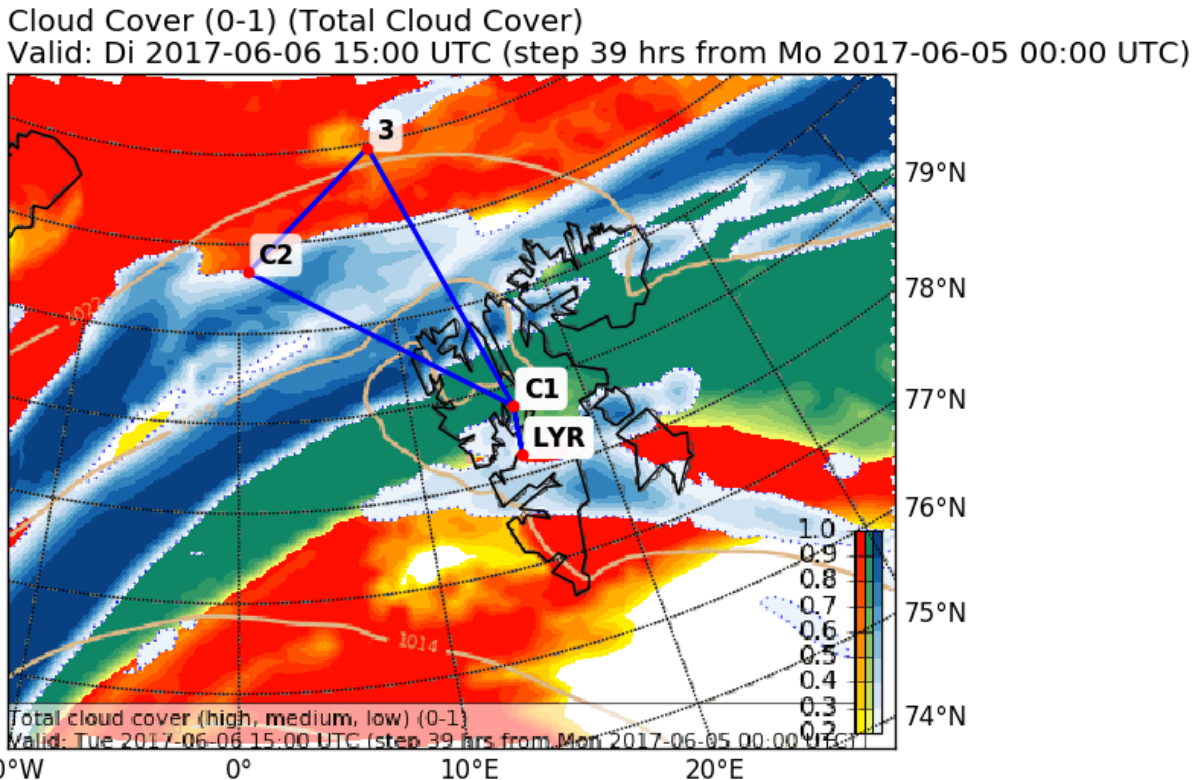


EPSG:77790000

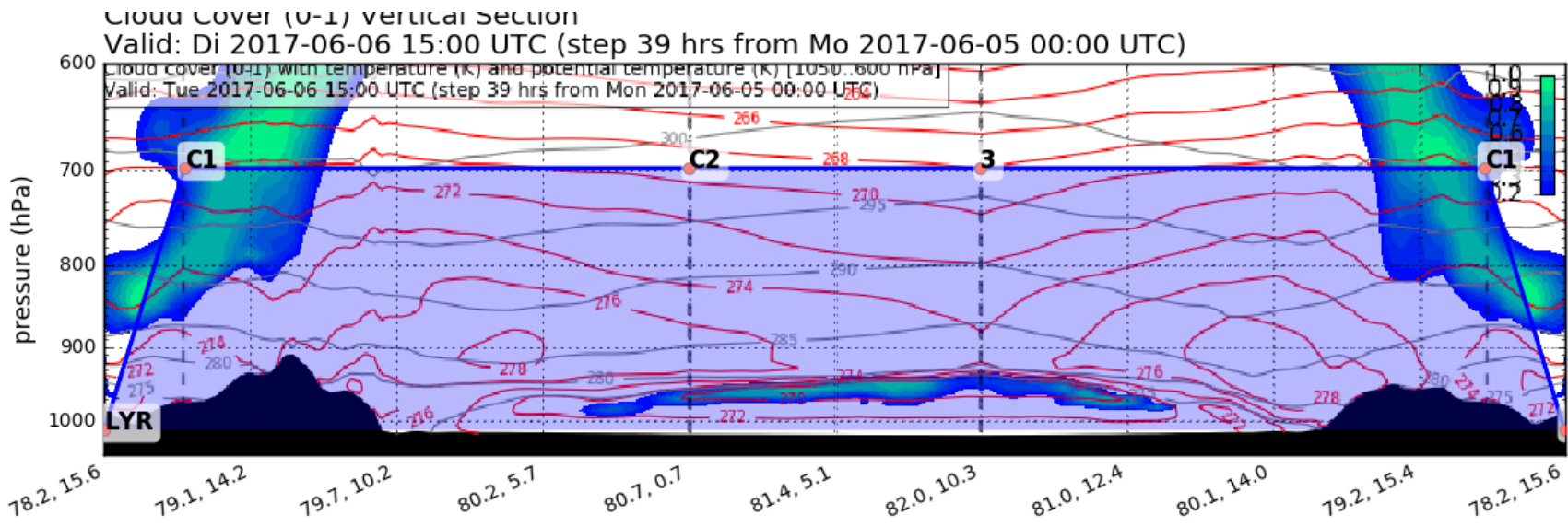


Forecast

Tomorrow 15 UTC

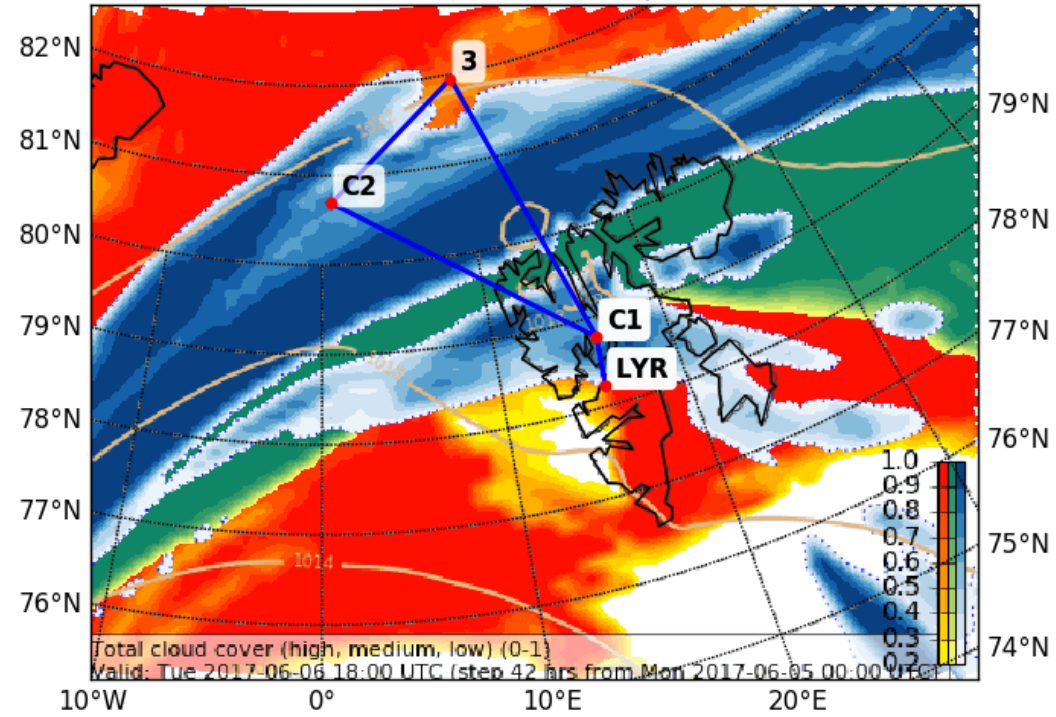


EPSG:77790000

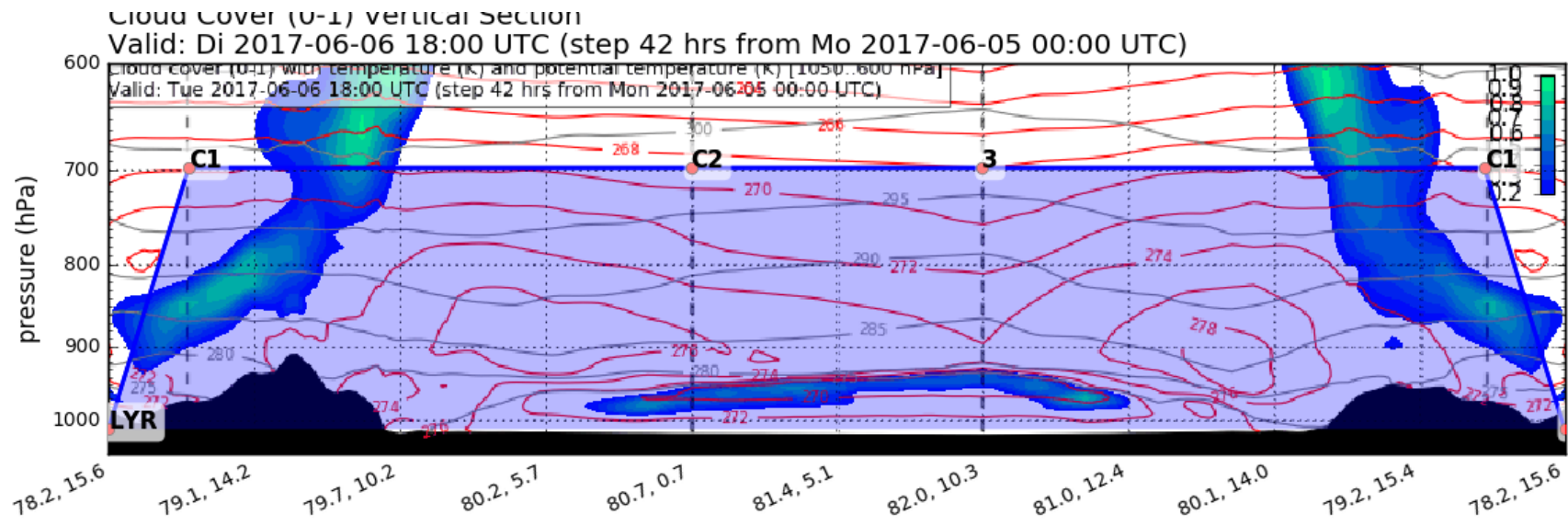


Forecast Tomorrow 18 UTC

Cloud Cover (0-1) (Total Cloud Cover)
Valid: Di 2017-06-06 18:00 UTC (step 42 hrs from Mo 2017-06-05 00:00 UTC)



EPSG:77790000



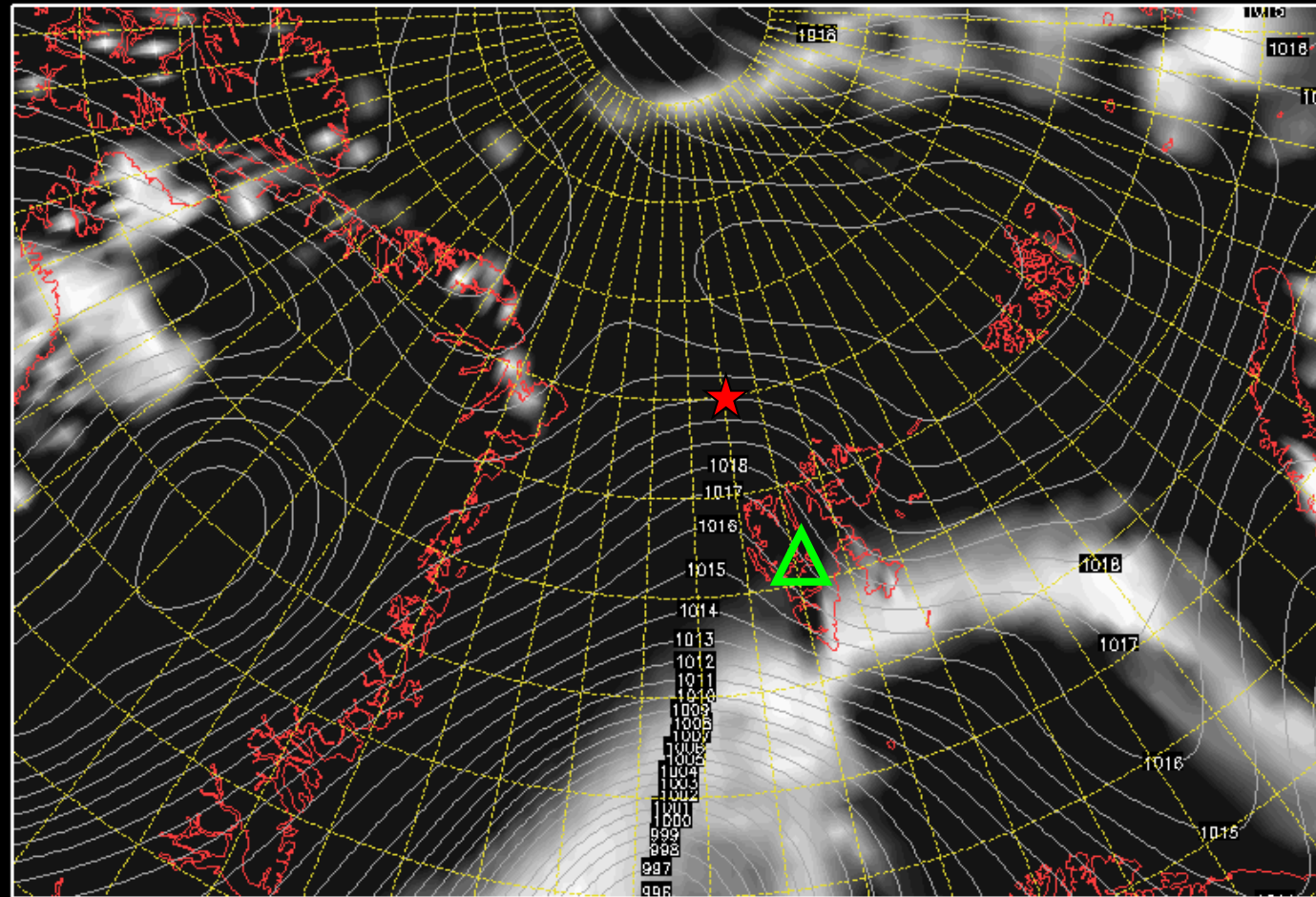
Low-level cloud cover 06 June 2017 @ 12 UTC

★ RV Polarstern (81.94° N, 10.92° E)

Init : Mon,05JUN2017 00Z

Valid: Tue,06JUN2017 12Z

Bodendruck, Tiefe Wolken und Grenzschicht-Wolken in %



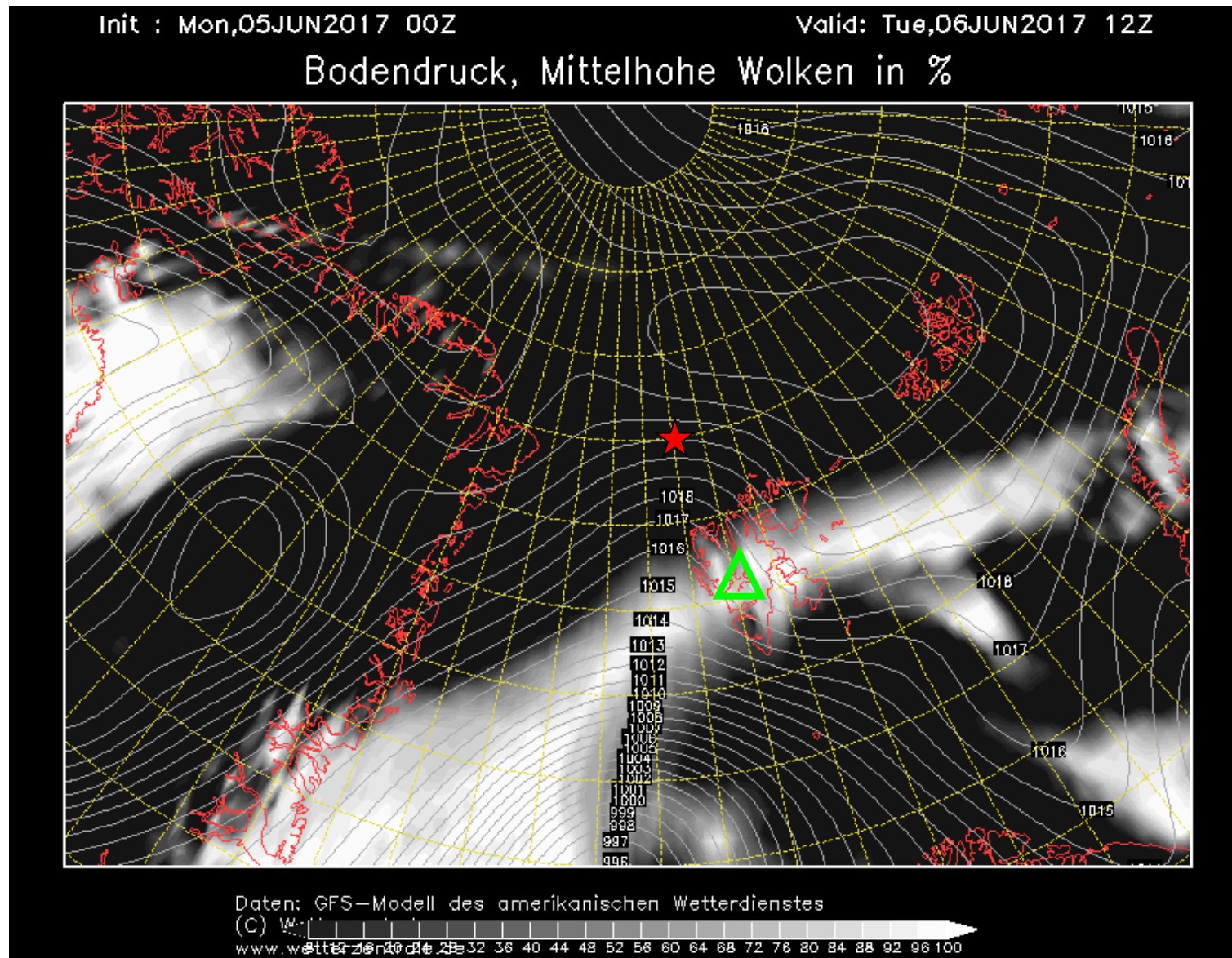
Daten: GFS-Modell des amerikanischen Wetterdienstes

(C) W...

www.wetter.de 28 32 36 40 44 48 52 56 60 64 68 72 76 80 84 88 92 96 100

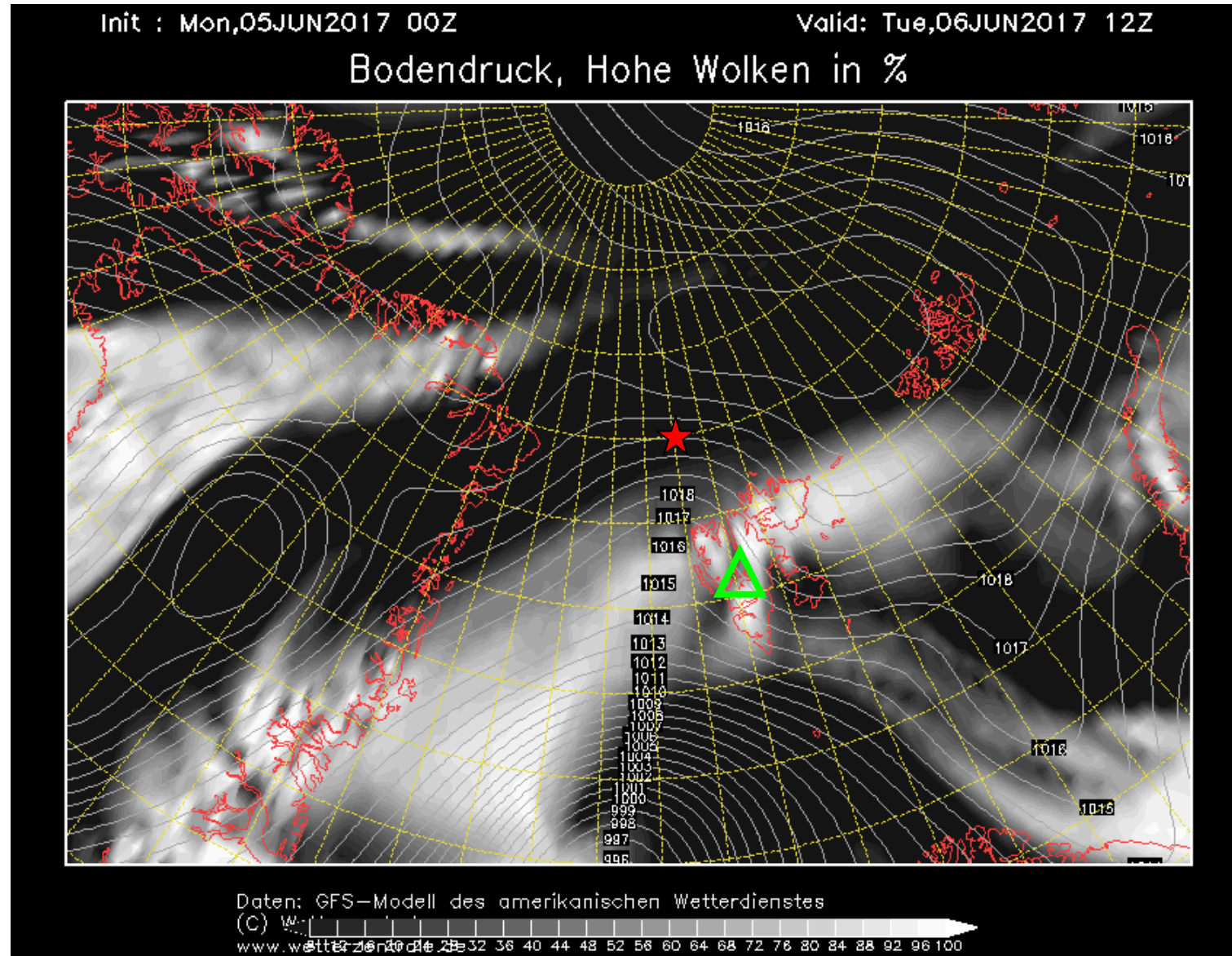
Mid-level cloud cover 06 June 2017 @ 12 UTC

★ RV Polarstern (81.94° N, 10.92° E)



High-level cloud cover 06 June 2017 @ 12 UTC

★ RV Polarstern (81.94° N, 10.92° E)

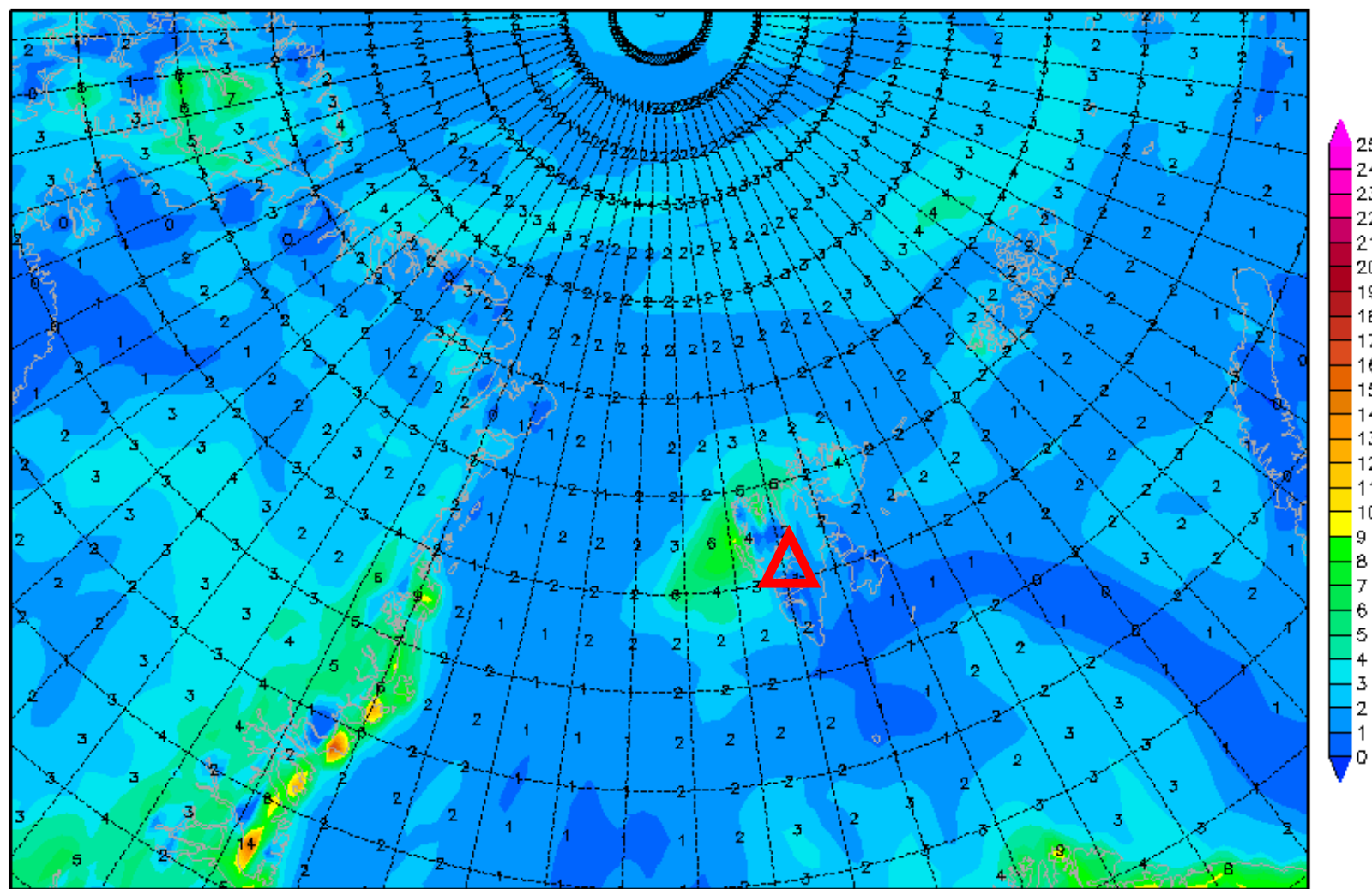


2-m dew point diff. 6 June 2017 @ 12 UTC

Init : Mon,05JUN2017 00Z

Valid: Tue,06JUN2017 12Z

2m (Temperatur-Taupunkt)



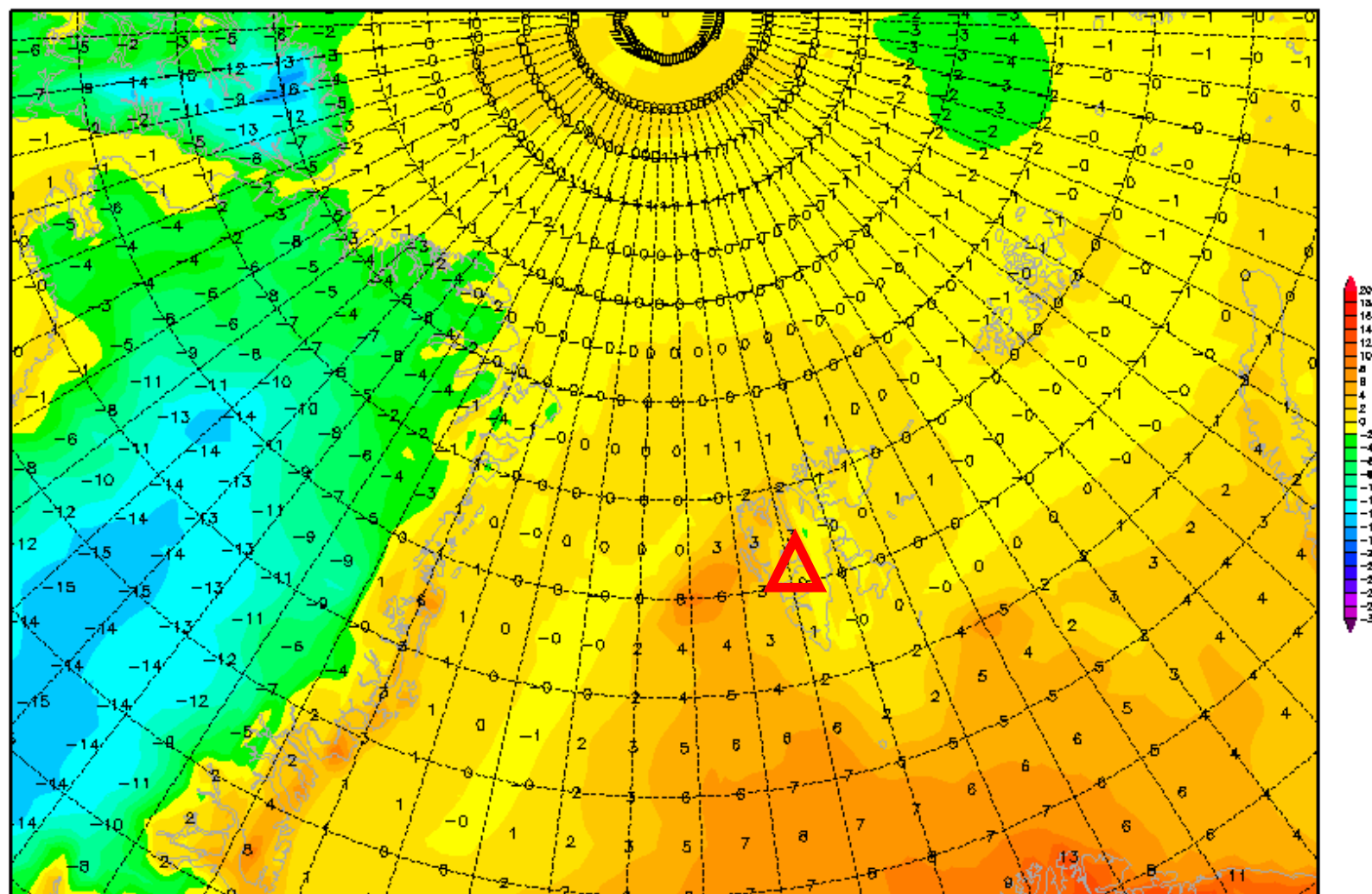
Daten: GFS
(C) Wetterzentrale
www.wetterzentrale.de

2-m temperature 6 June 2017 @ 12 UTC

Init : Mon,05JUN2017 00Z

Valid: Tue,06JUN2017 12Z

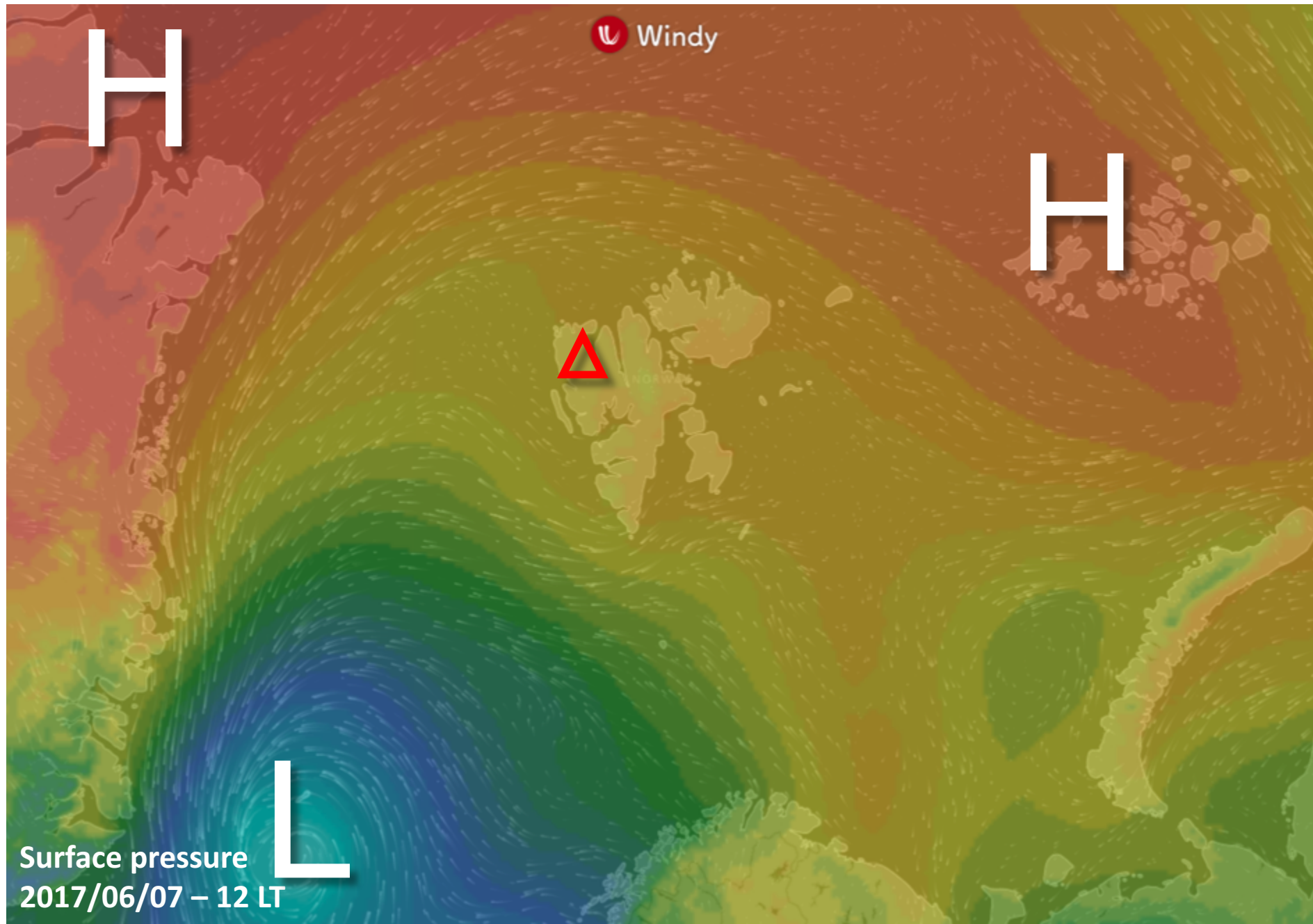
2m Temperatur (°C)



Outlook

Wed 7 June – Thu 8 June 2017

General Situation Wed 7 June 2017

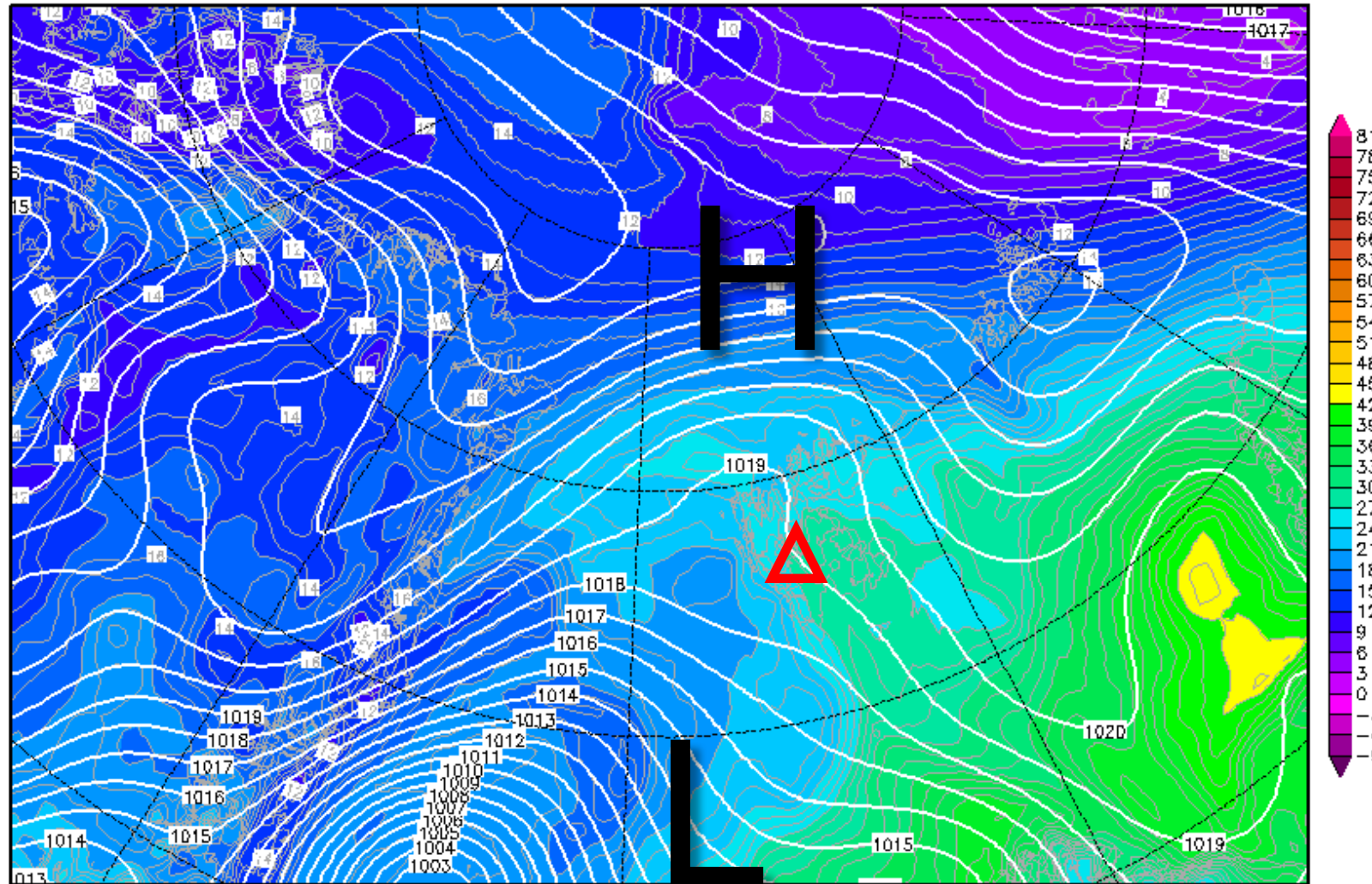


850-hPa Theta Equiv. 7 June 2017 @ 12 UTC

Init : Mon,05JUN2017 00Z

Valid: Wed,07JUN2017 12Z

Bodendruck (hPa) und 850 hPa Aeq.Pot.T. (Grad C)



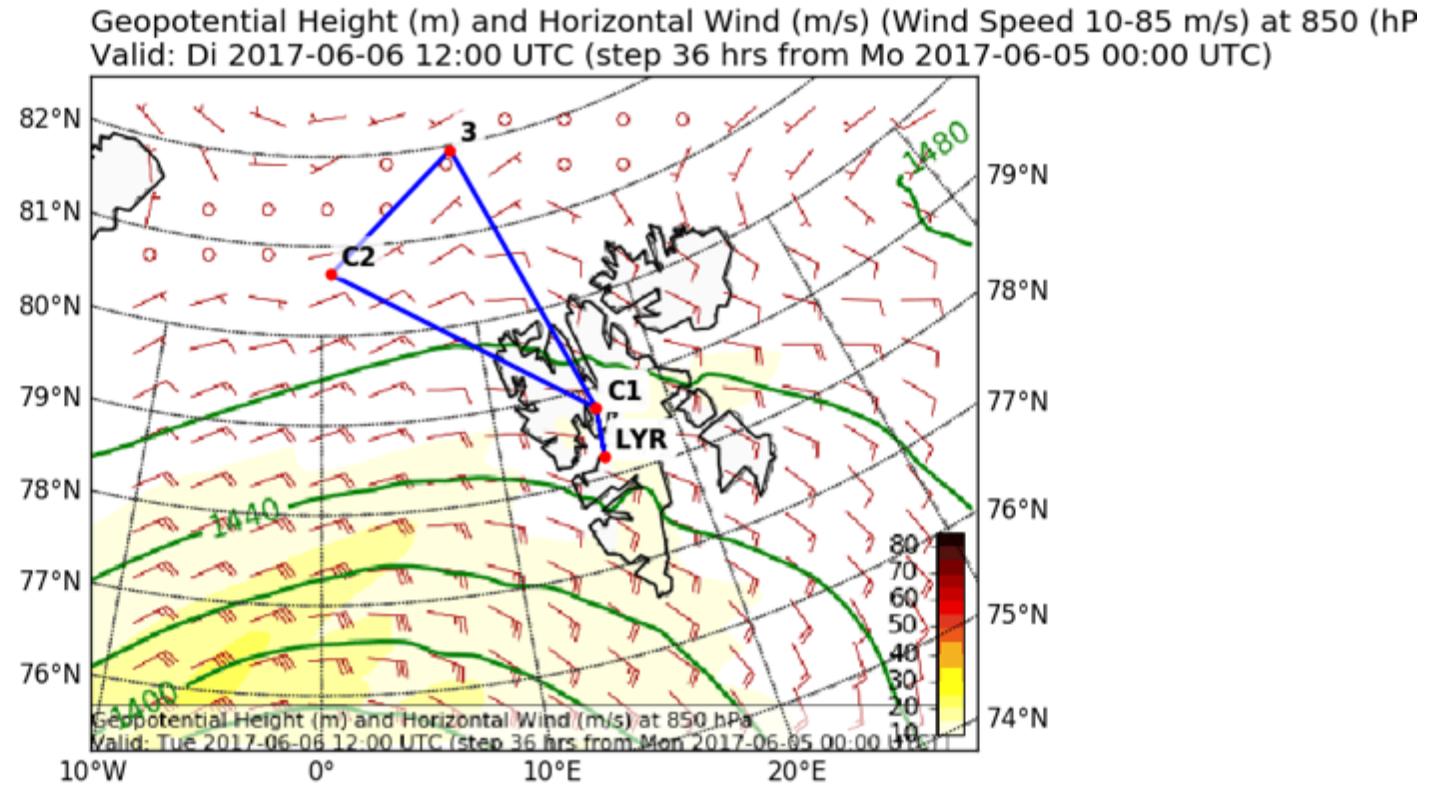
Daten: GFS-Modell des amerikanischen Wetterdienstes

(C) Wetterzentrale

www.wetterzentrale.de

Wind

Tomorrow 12 UTC

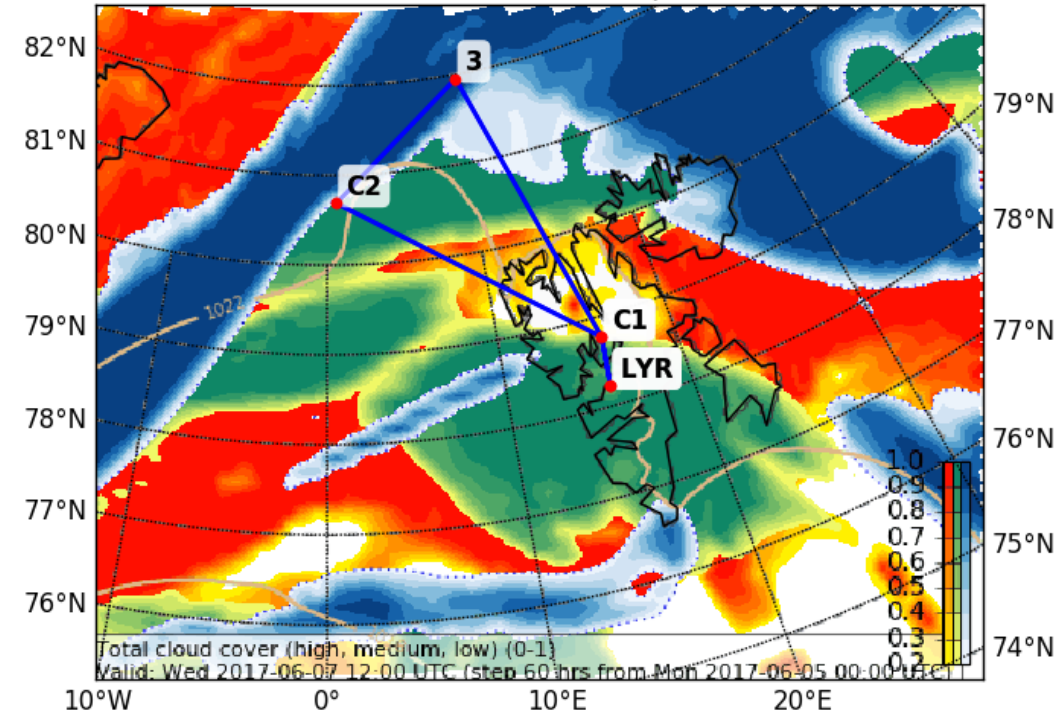


EPSG:77790000

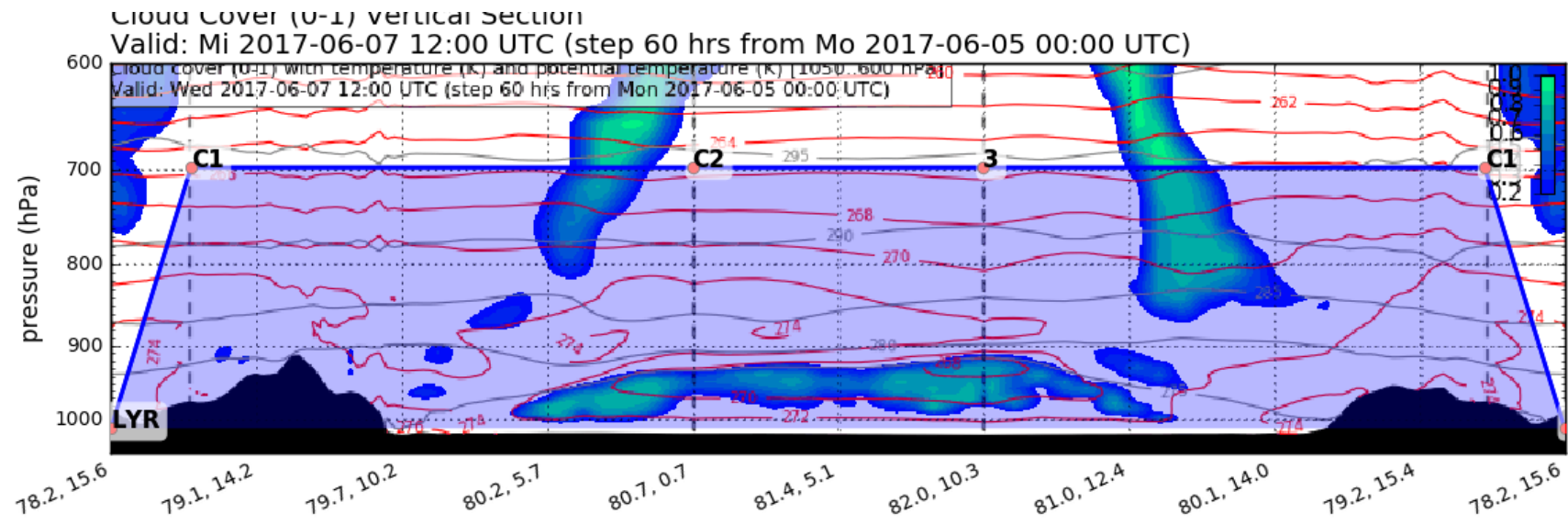
Forecast Wed 07 June 12 UTC

Cloud Cover (0-1) (Total Cloud Cover)

Valid: Mi 2017-06-07 12:00 UTC (step 60 hrs from Mo 2017-06-05 00:00 UTC)

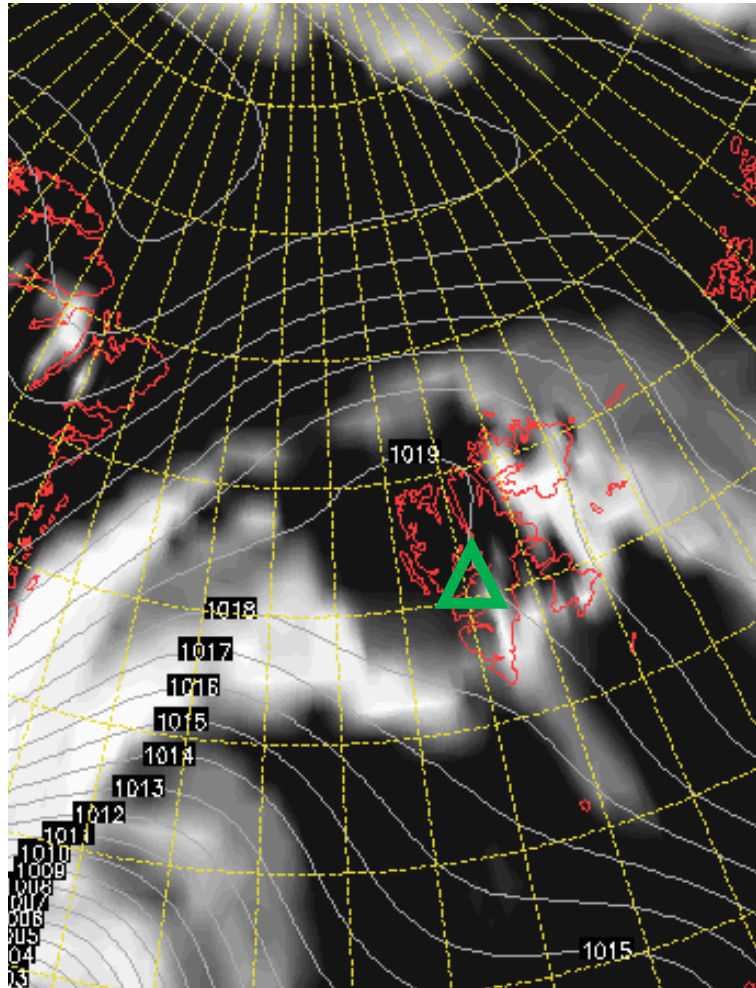


EPSG:77790000

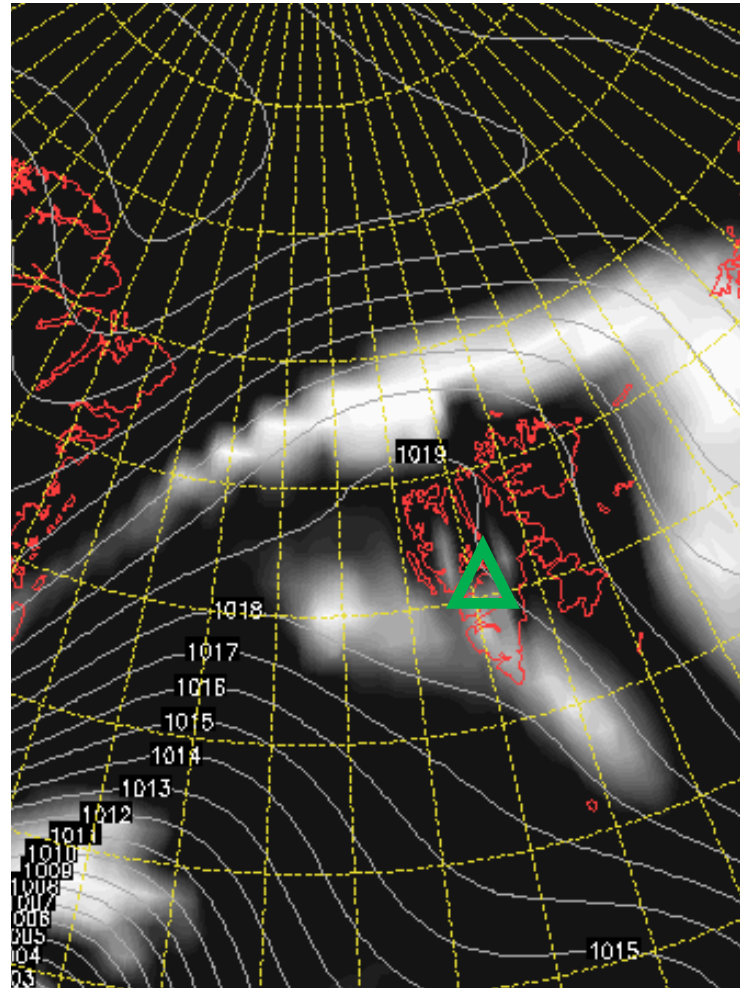


Cloud Cover 7 June 2017 @ 12 UTC

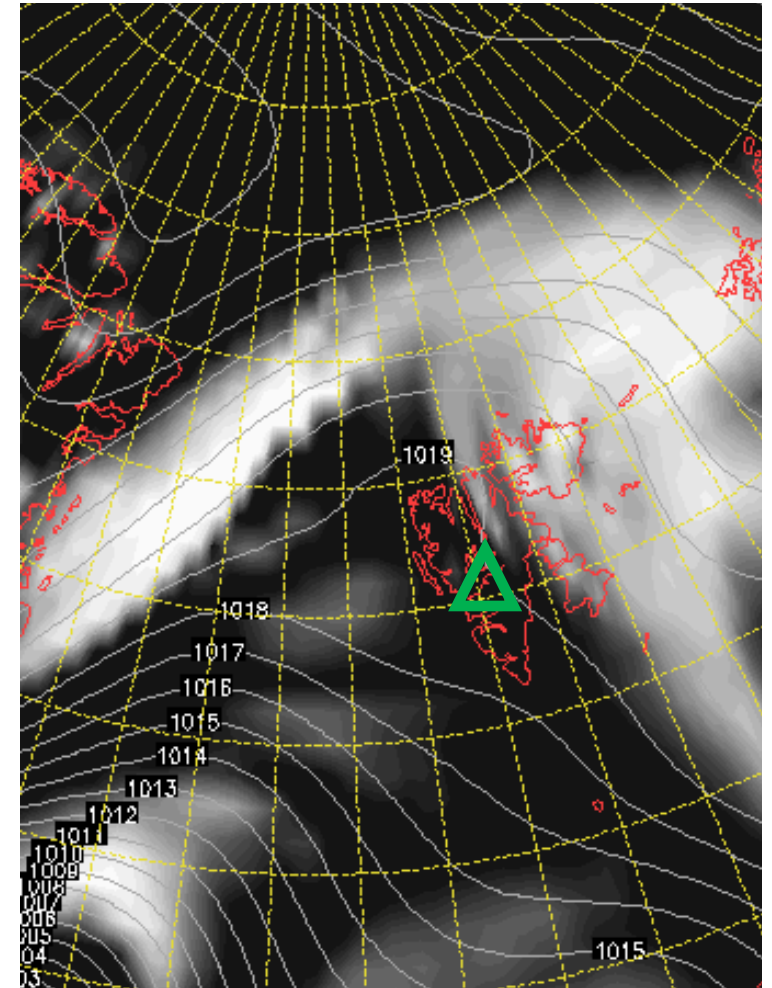
L



M



H

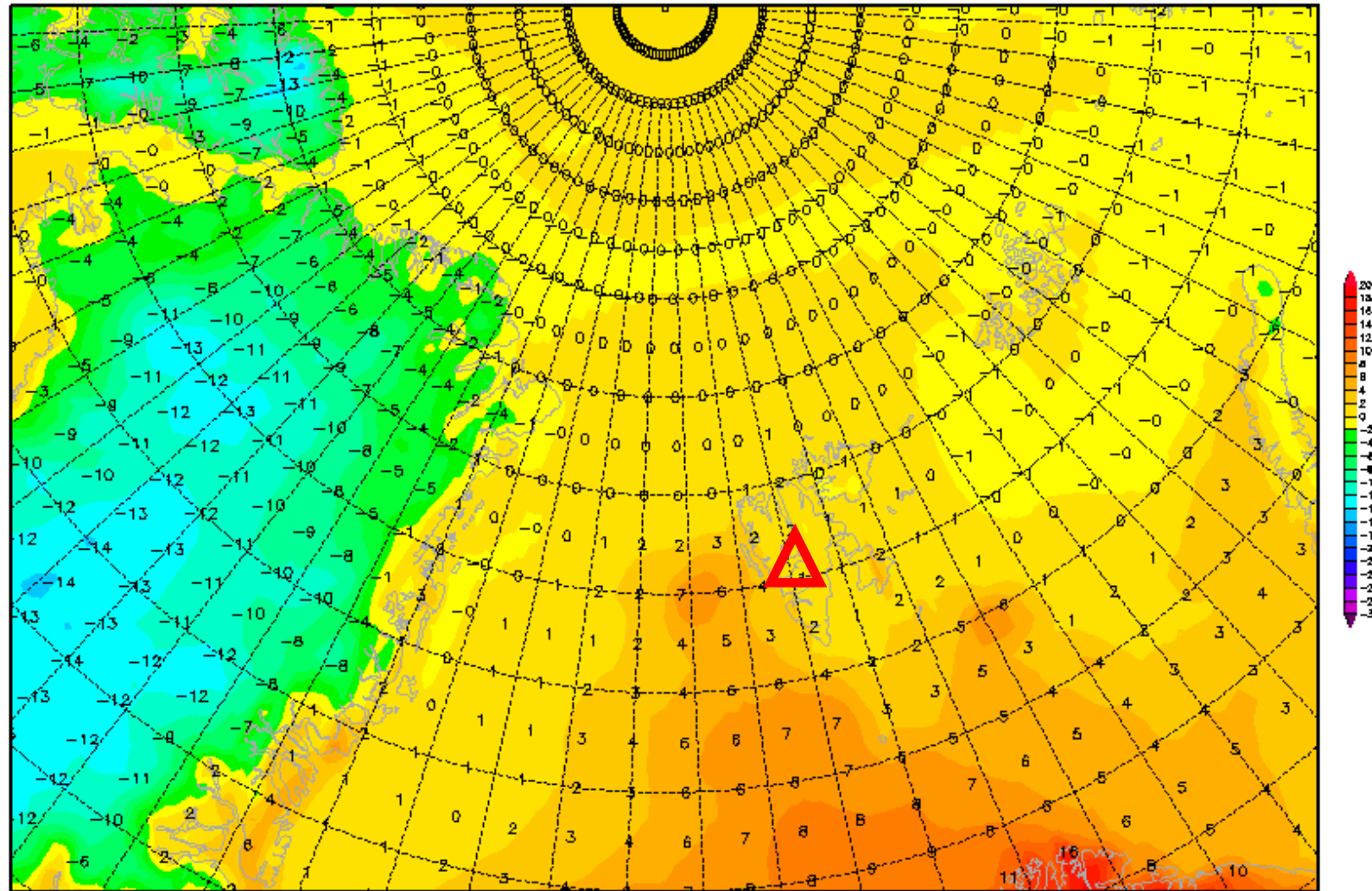


2-m temperature 7 June 2017 @ 12 UTC

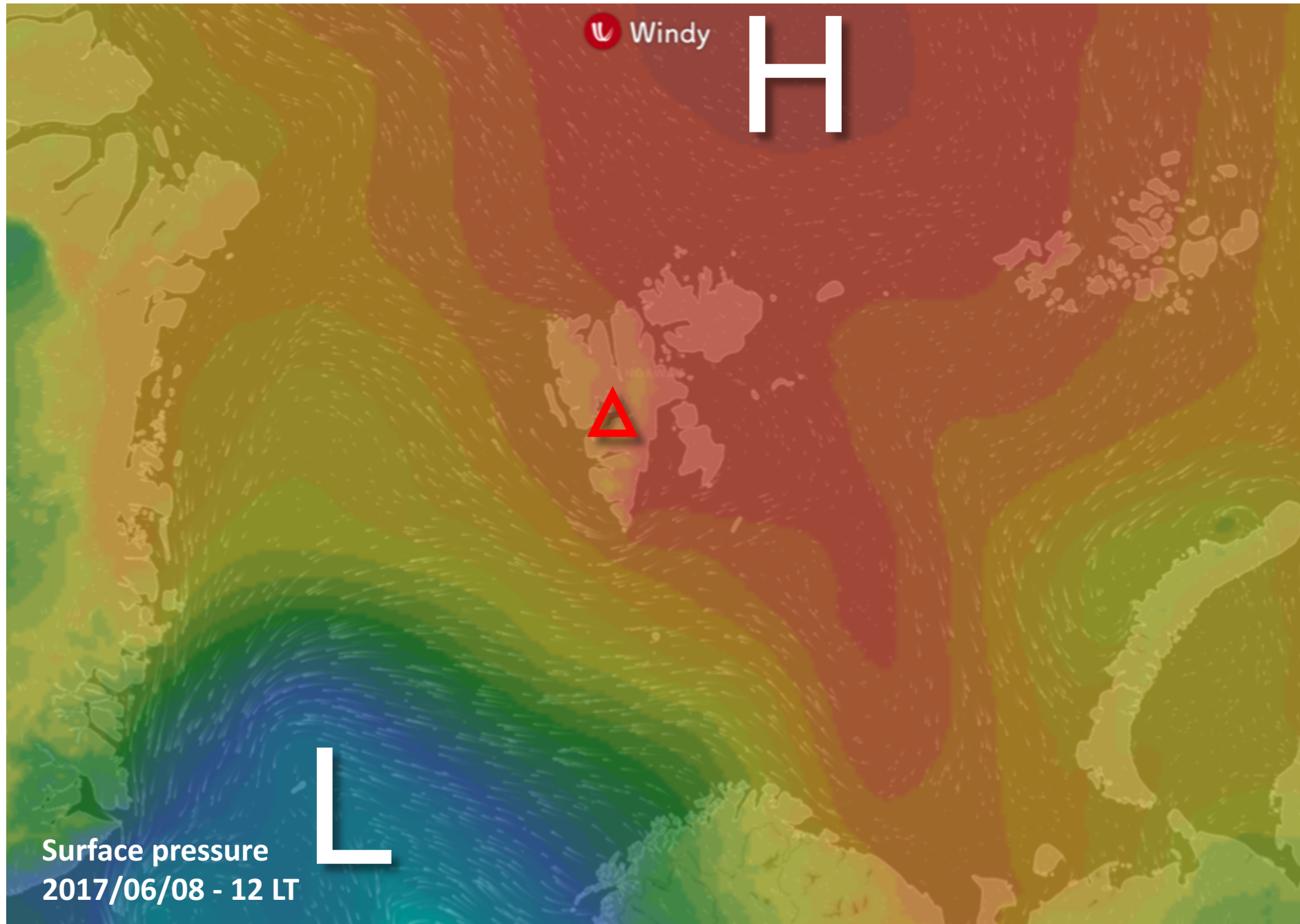
Init : Mon,05JUN2017 00Z

Valid: Wed,07JUN2017 12Z

2m Temperatur (°C)



General Situation Thu 8 June 2017

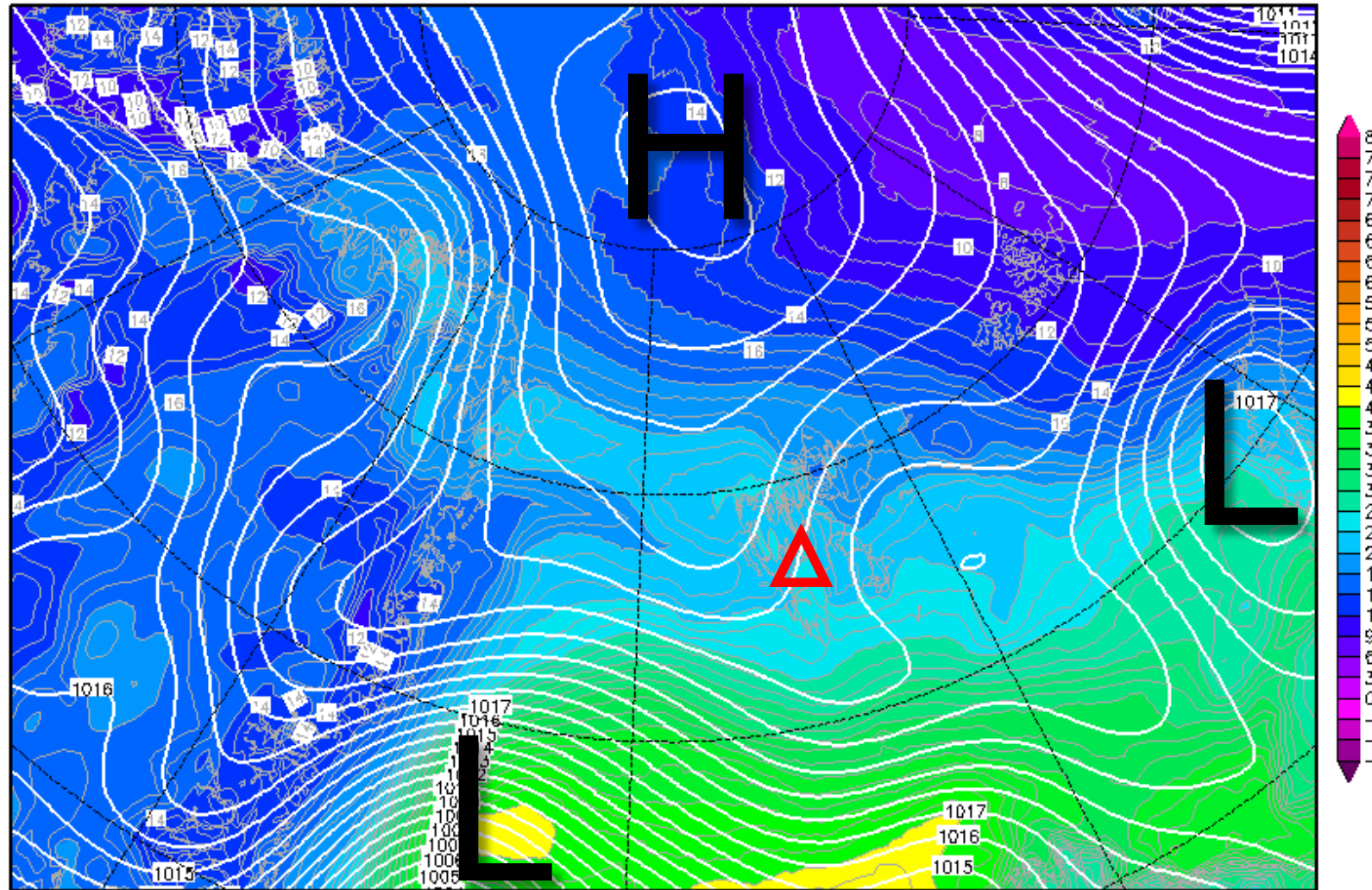


850-hPa Theta Equiv. 8 June 2017 @ 12 UTC

Init : Mon,05JUN2017 00Z

Valid: Thu,08JUN2017 12Z

Bodendruck (hPa) und 850 hPa Aeq.Pot.T. (Grad C)



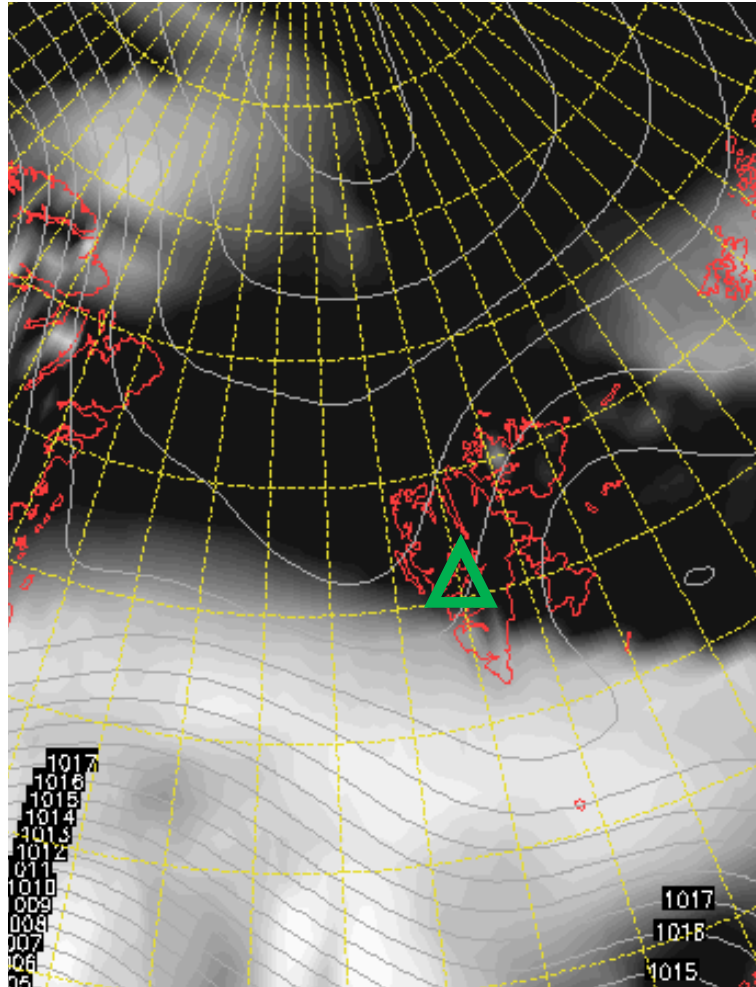
Daten: GFS-Modell des amerikanischen Wetterdienstes

(C) Wetterzentrale

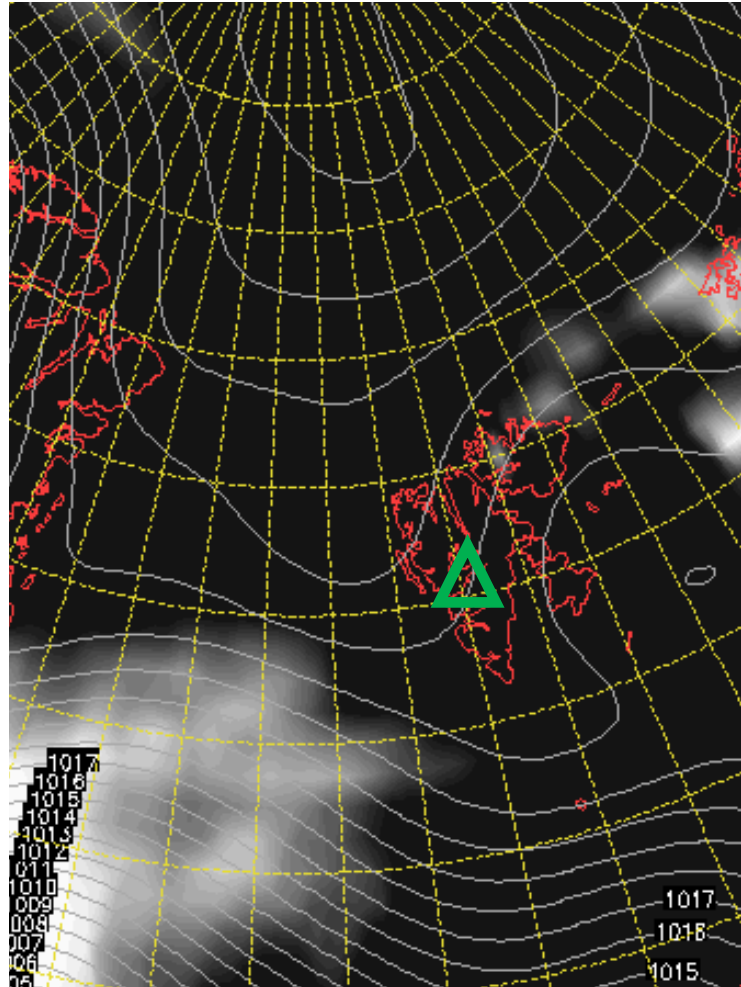
www.wetterzentrale.de

Cloud Cover 8 June 2017 @ 12 UTC

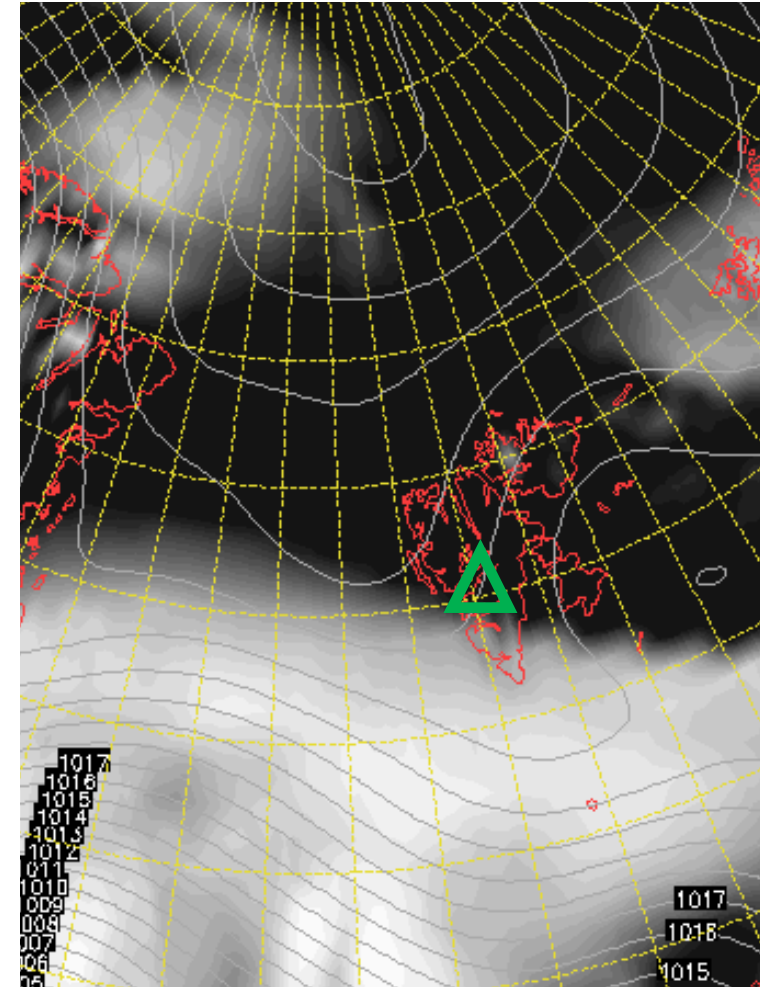
L



M



H

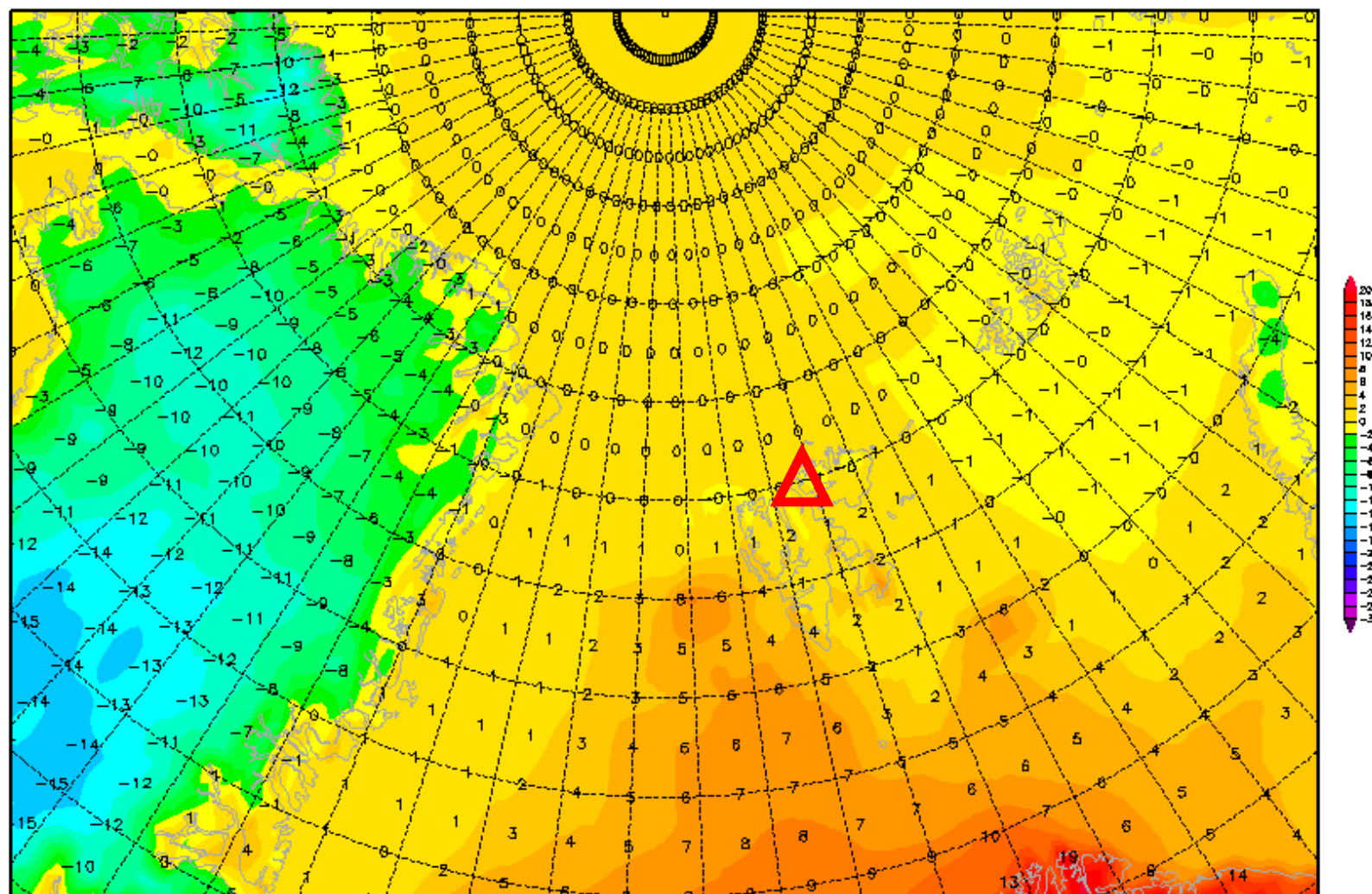


2-m temperature 8 June 2017 @ 12 UTC

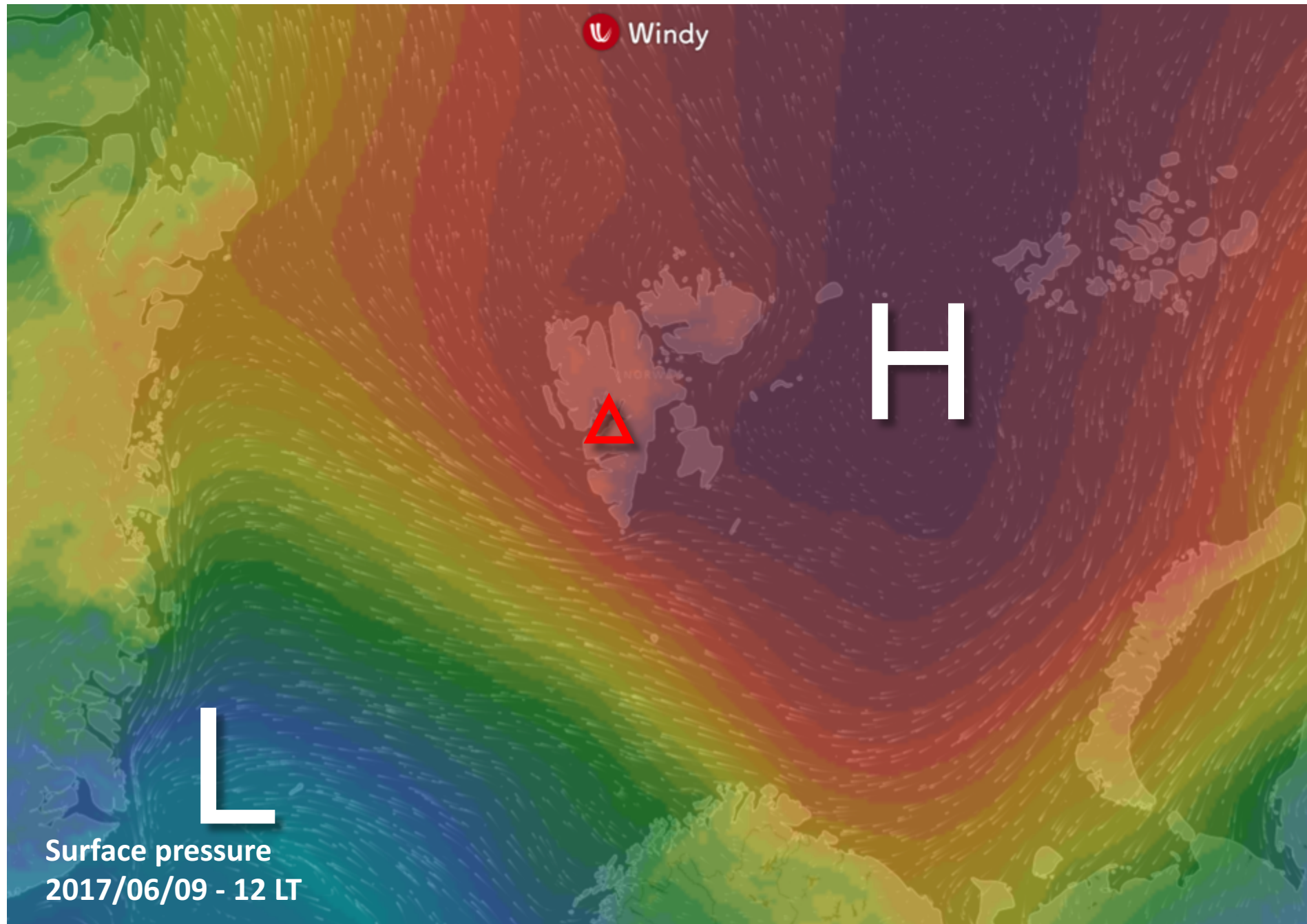
Init : Mon,05JUN2017 00Z

Valid: Thu,08JUN2017 12Z

2m Temperatur (°C)



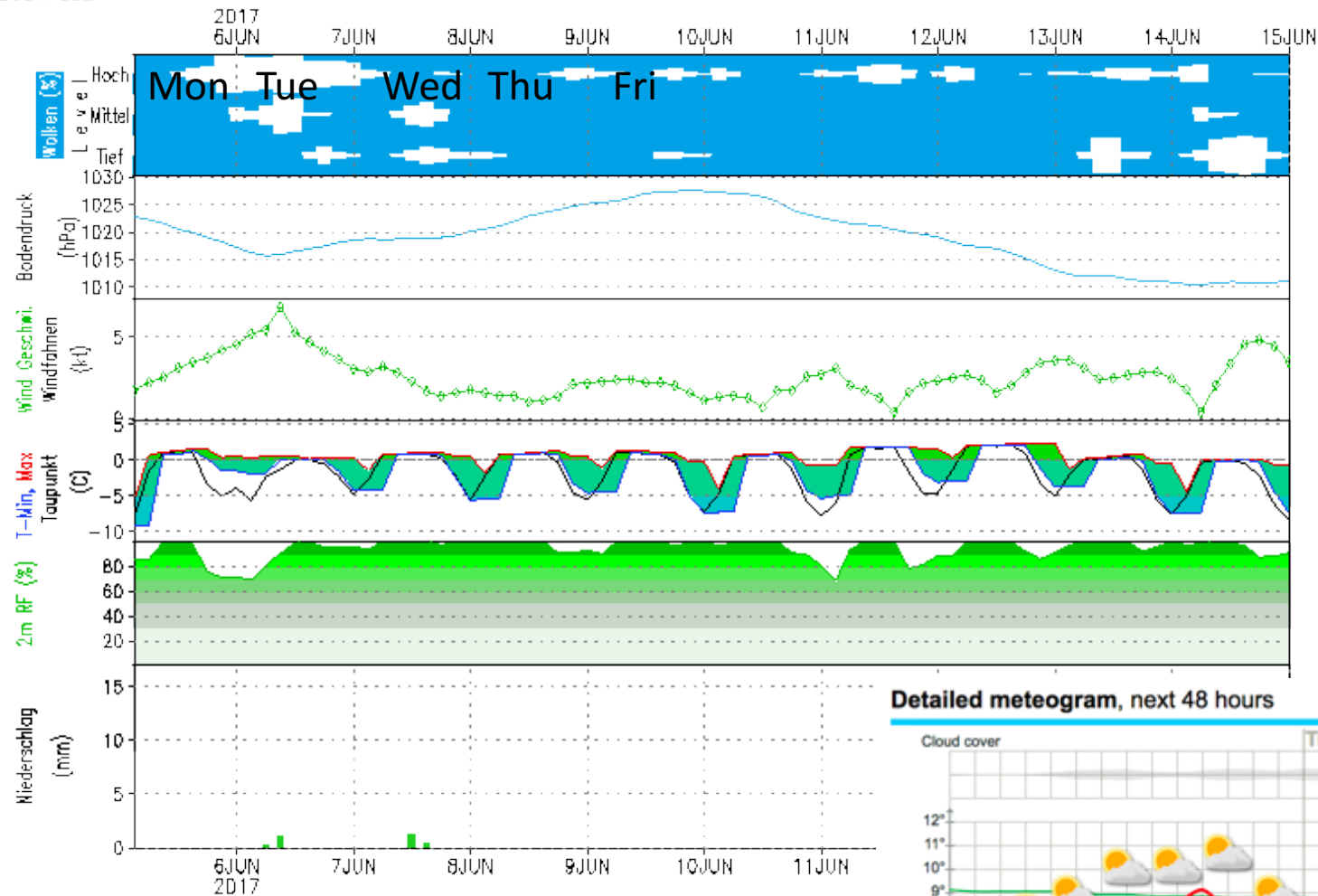
General Situation Fri 9 June 2017



GFS – Meteogramm

Lon: 15.63 Lat: 78.22 Hgt: 331m

Lauf: 00Z

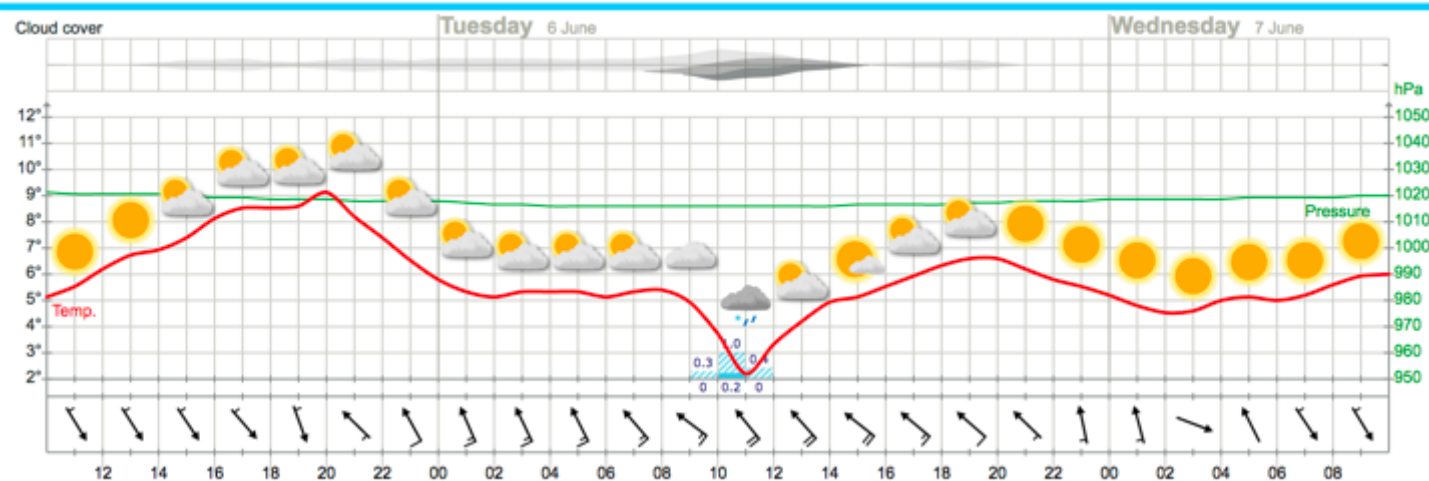


Heute kein Sonnenaufgang
Heute kein Sonnenuntergang

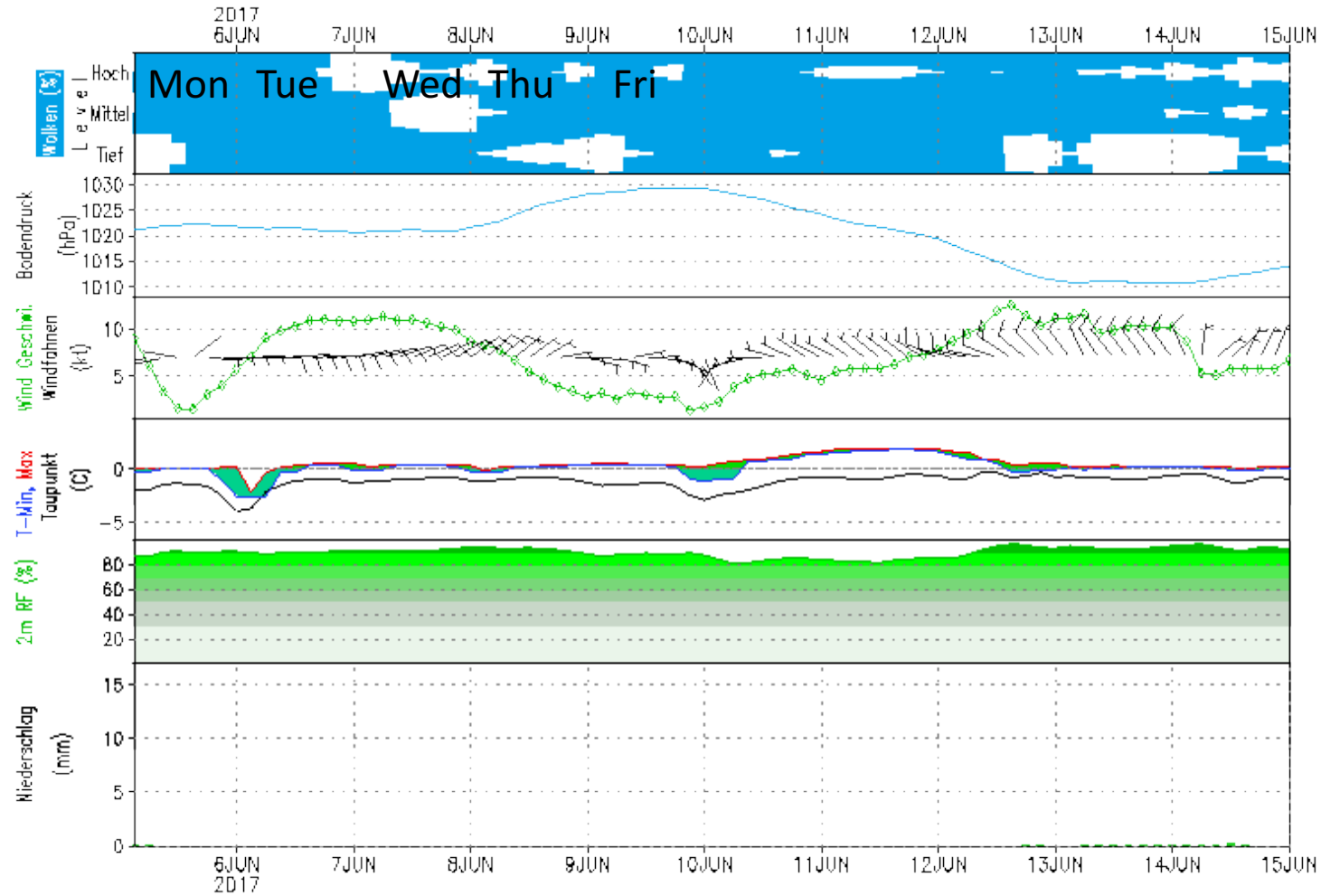
Outlook – Meteogram

YR.no

Detailed meteogram, next 48 hours



Outlook – Meteogram Polarstern



Heute kein Sonnenaufgang
Heute kein Sonnenuntergang

