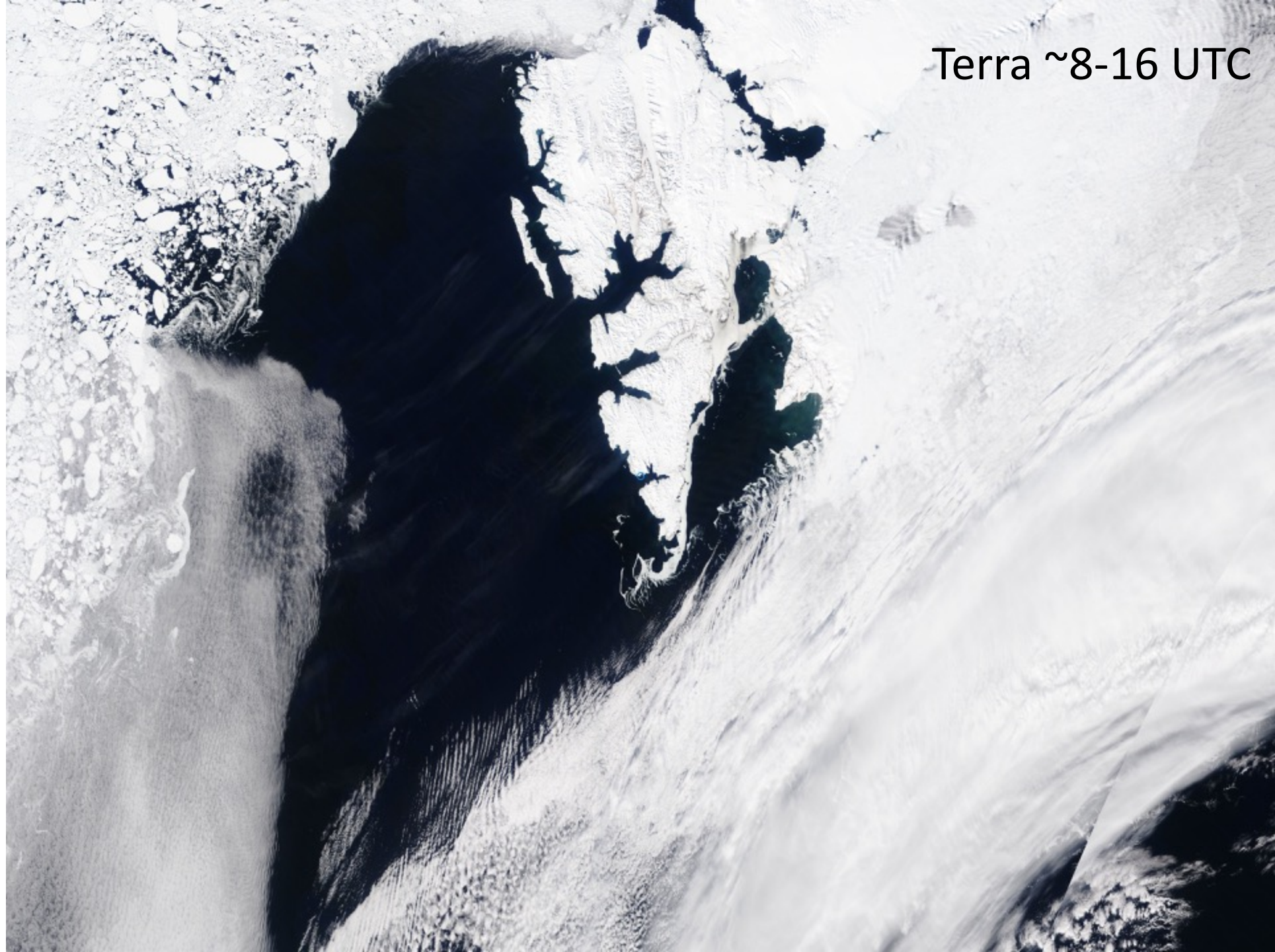


Weather briefing

ACLOUD Longyearbyen, Svalbard

Thu 01 June 2017 – **Fri 02 June** – Sun 4 June 2017

Terra ~8-16 UTC



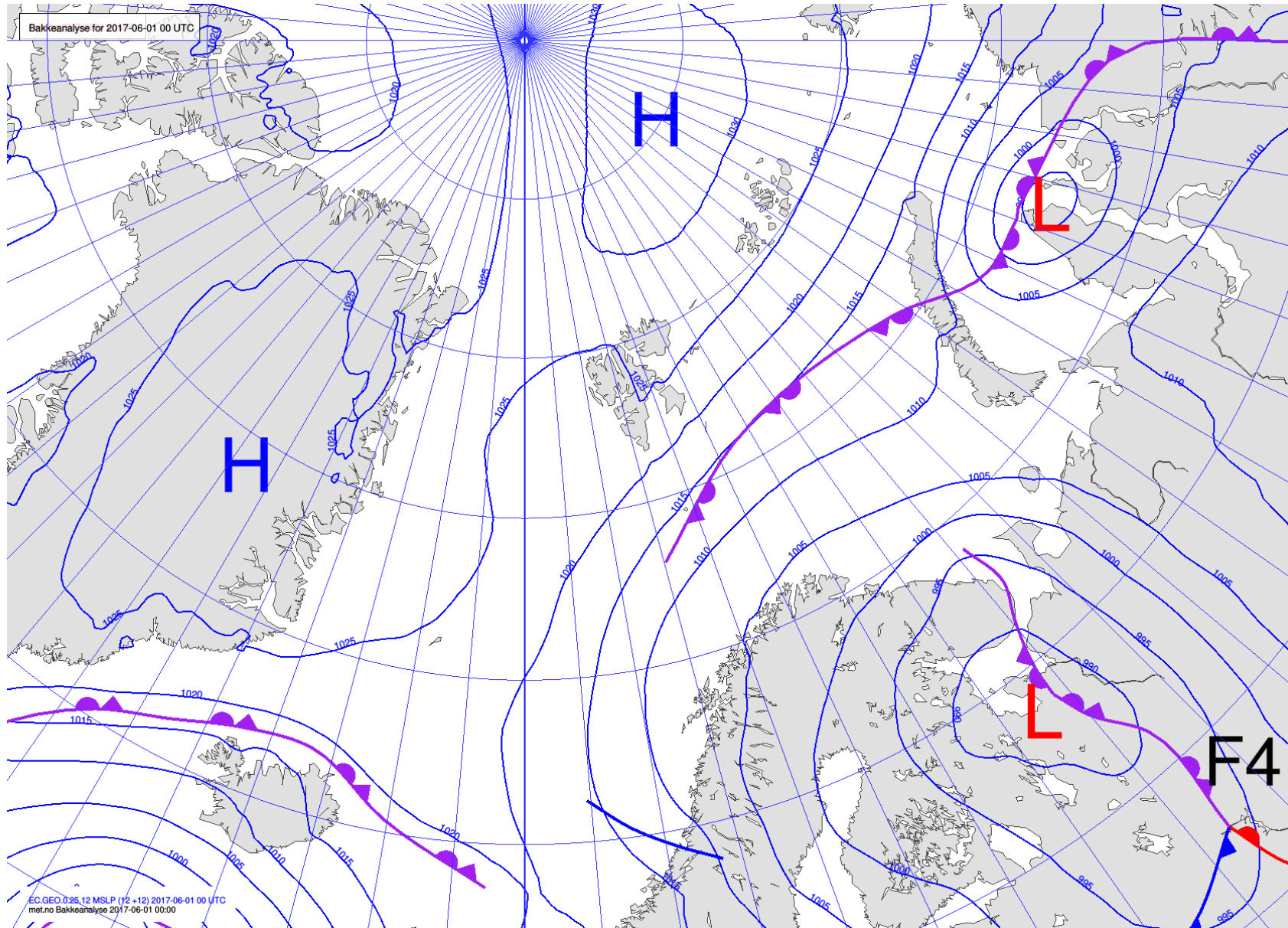
Summary

Low pressure over northern Russia combined with high pressure to the north of Spitsbergen bring a northeasterly wind flow. No clouds around Longyearbyen because of the lee effect.

Tomorrow the wind changes to a southerly flow resulting in an increase in cloudiness.

Position of Polarstern (8:00 UTC): 80°24' N 07°12' E

Analysis 01 June 2017 @ 00 UTC

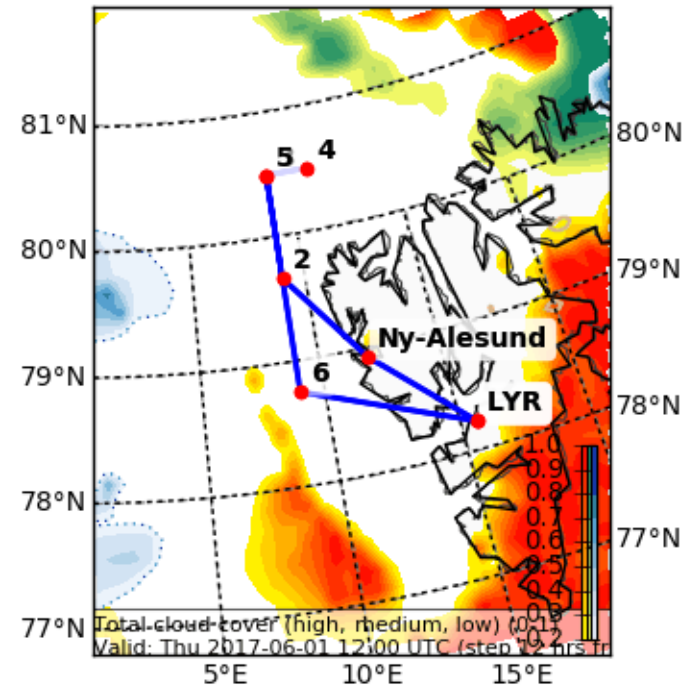


Clouds

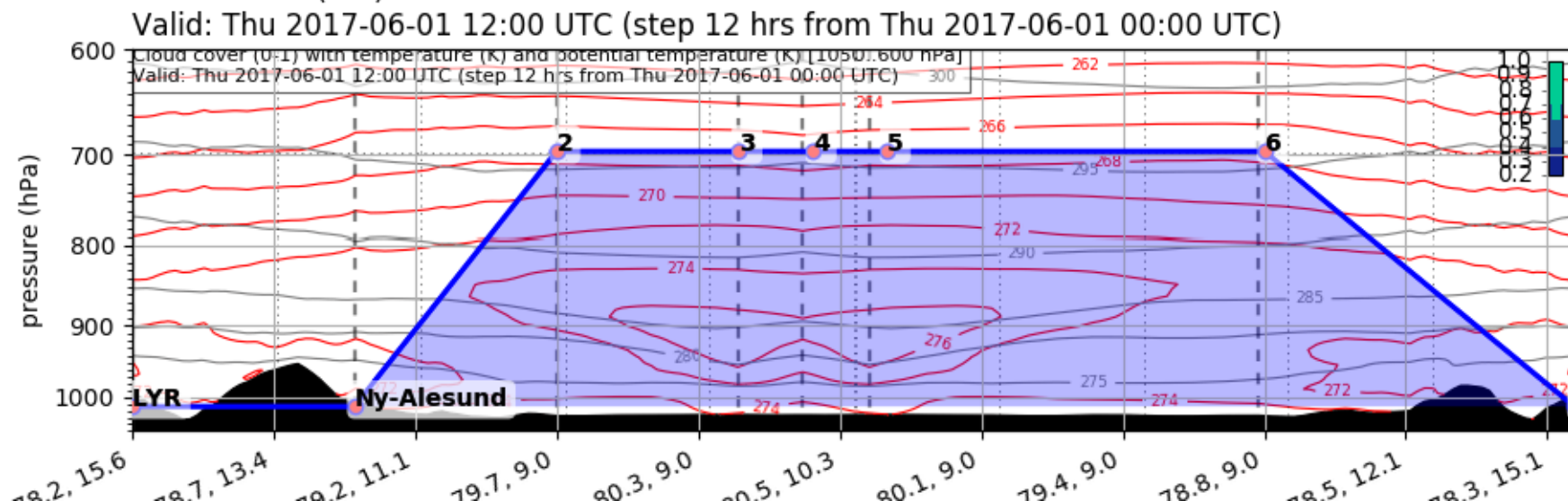
Today 12 UTC

Cloud Cover (0-1) (Total Cloud Cover)

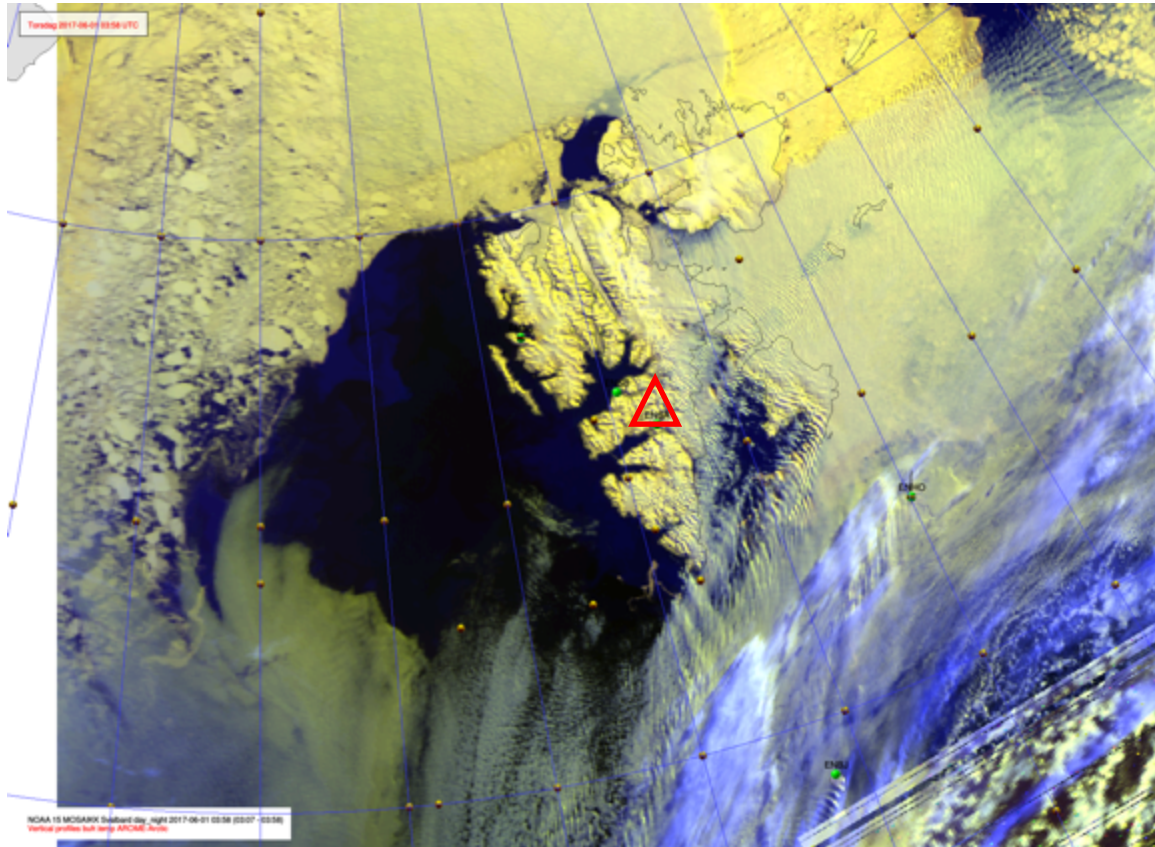
Valid: Thu 2017-06-01 12:00 UTC (step 12 hrs from Thu 2017-06-01 00:00 L



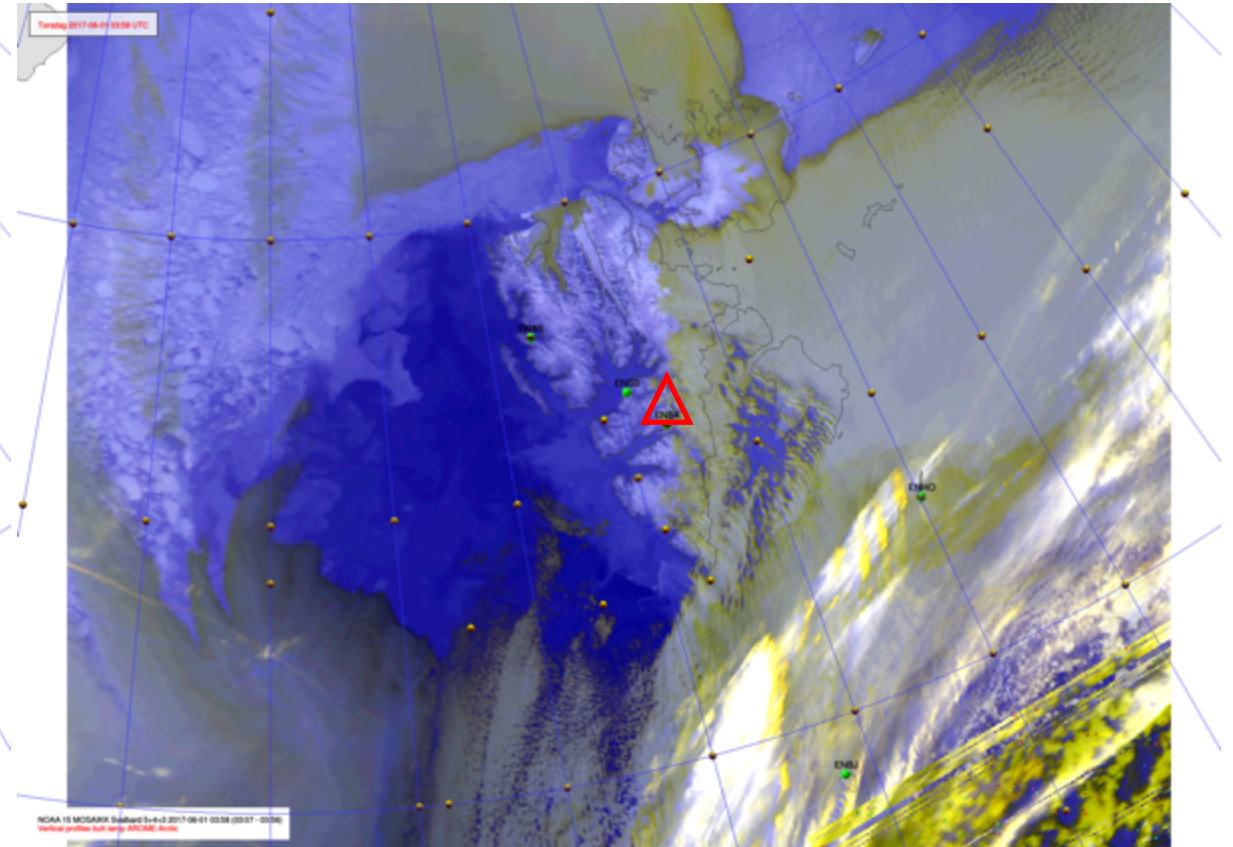
EPSG:77790000



NOAA-19 01 June 2017 @ 0359 UTC

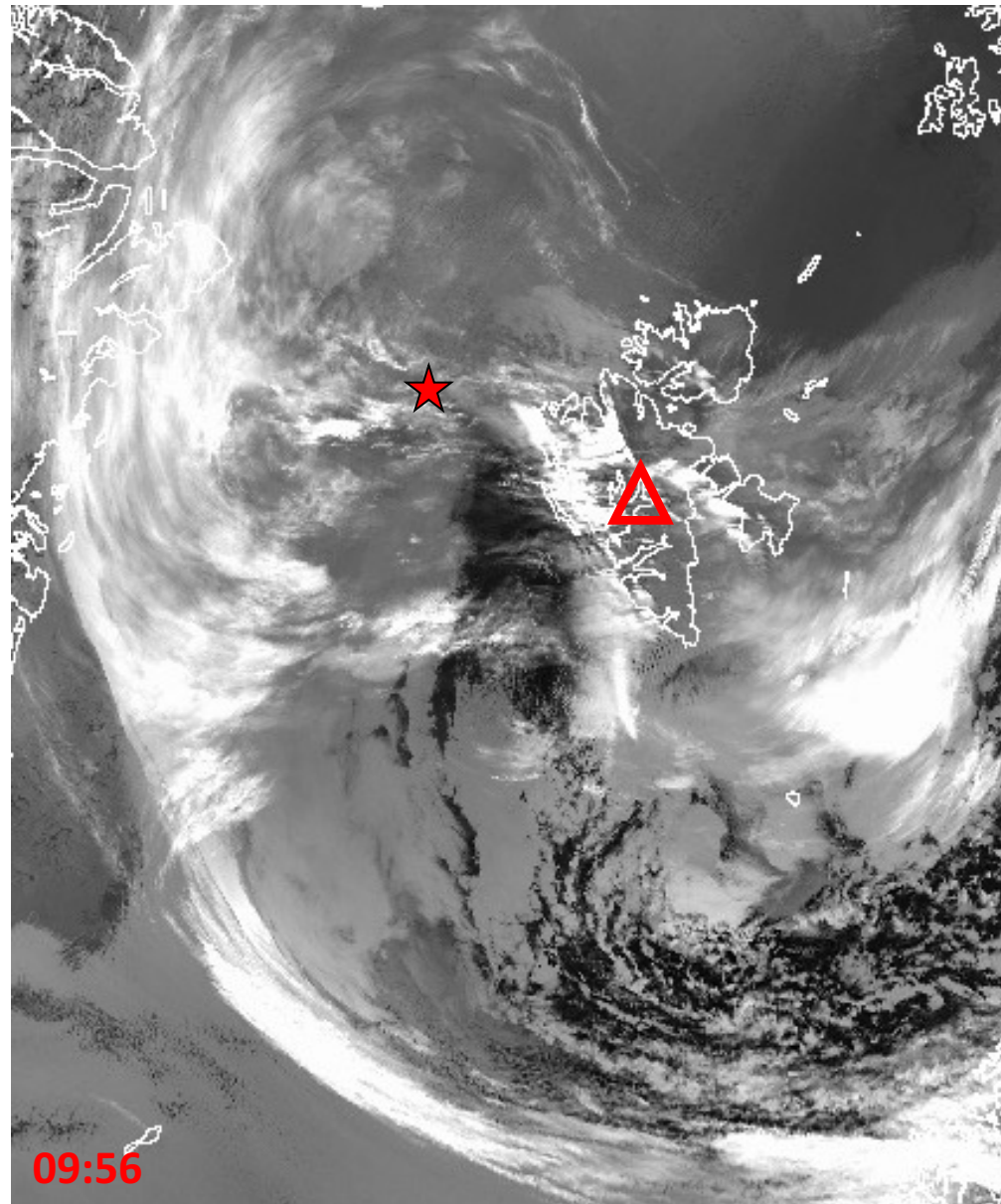


10.8 μm



IR, Ch 5+4+3

NOAA-19 01 June 2017 @ 0956 UTC



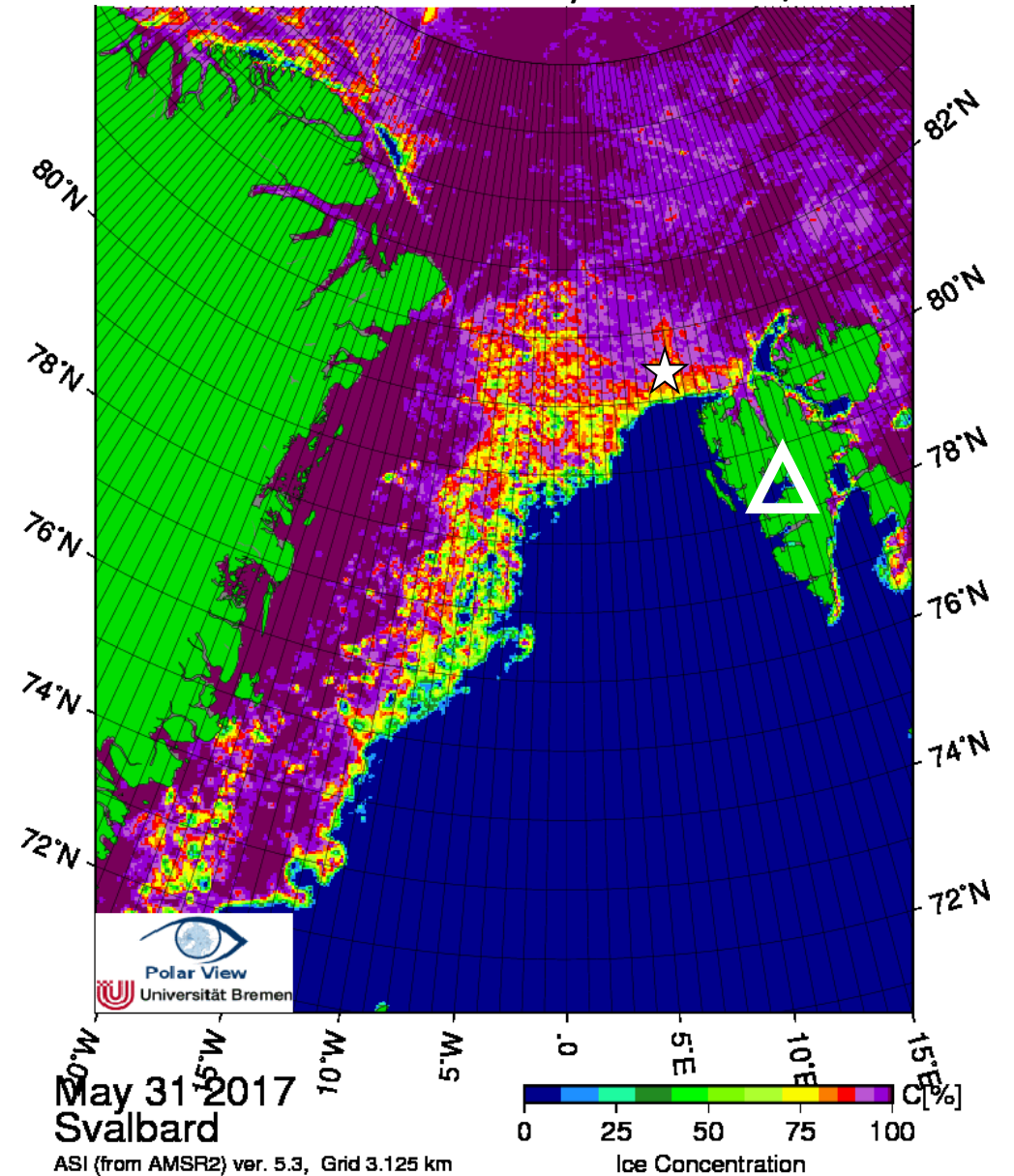
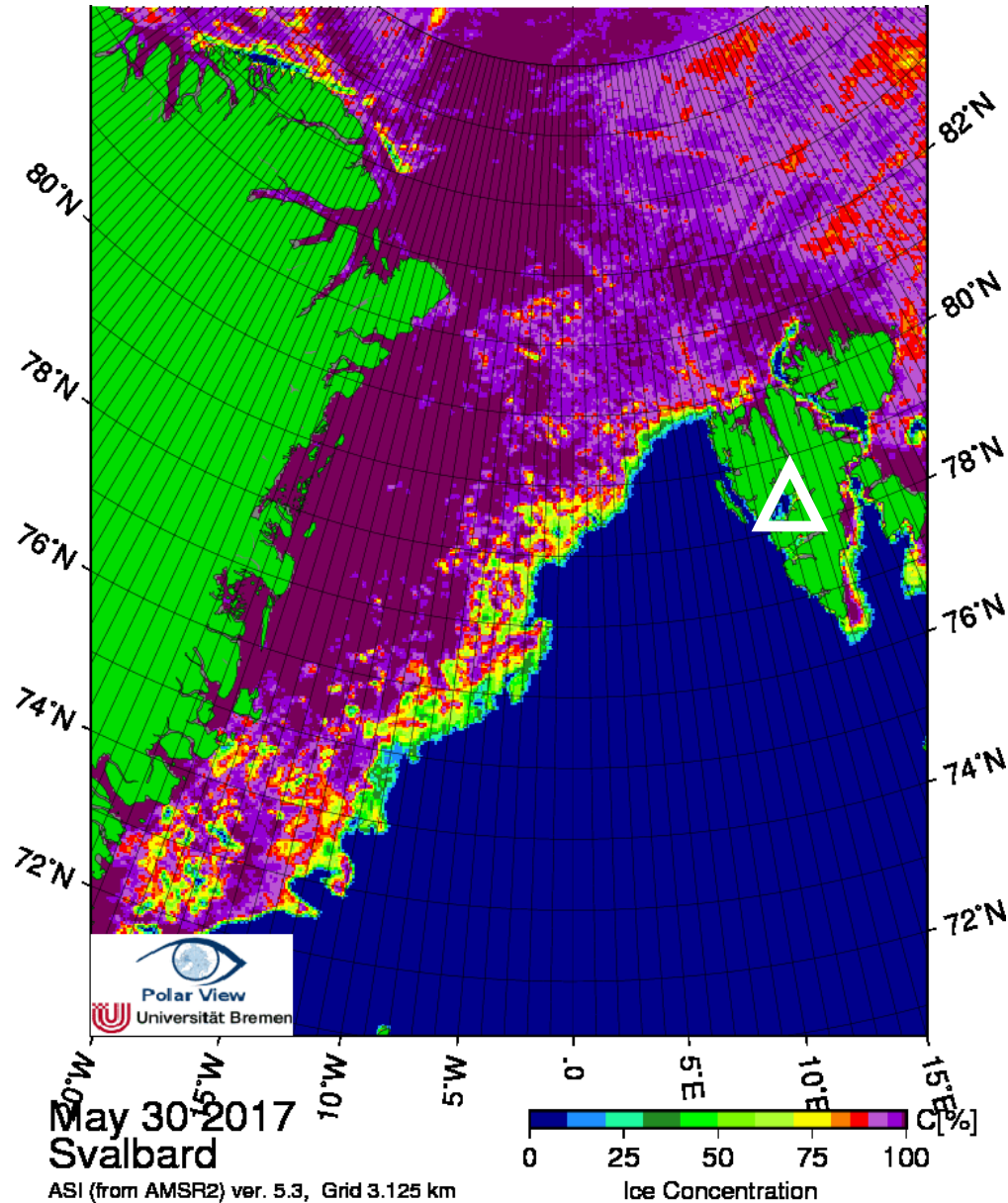
★ RV Polarstern (80°N/7°E)

09:56

10.8 μm

Arctic sea ice 30 & 31 May 2017

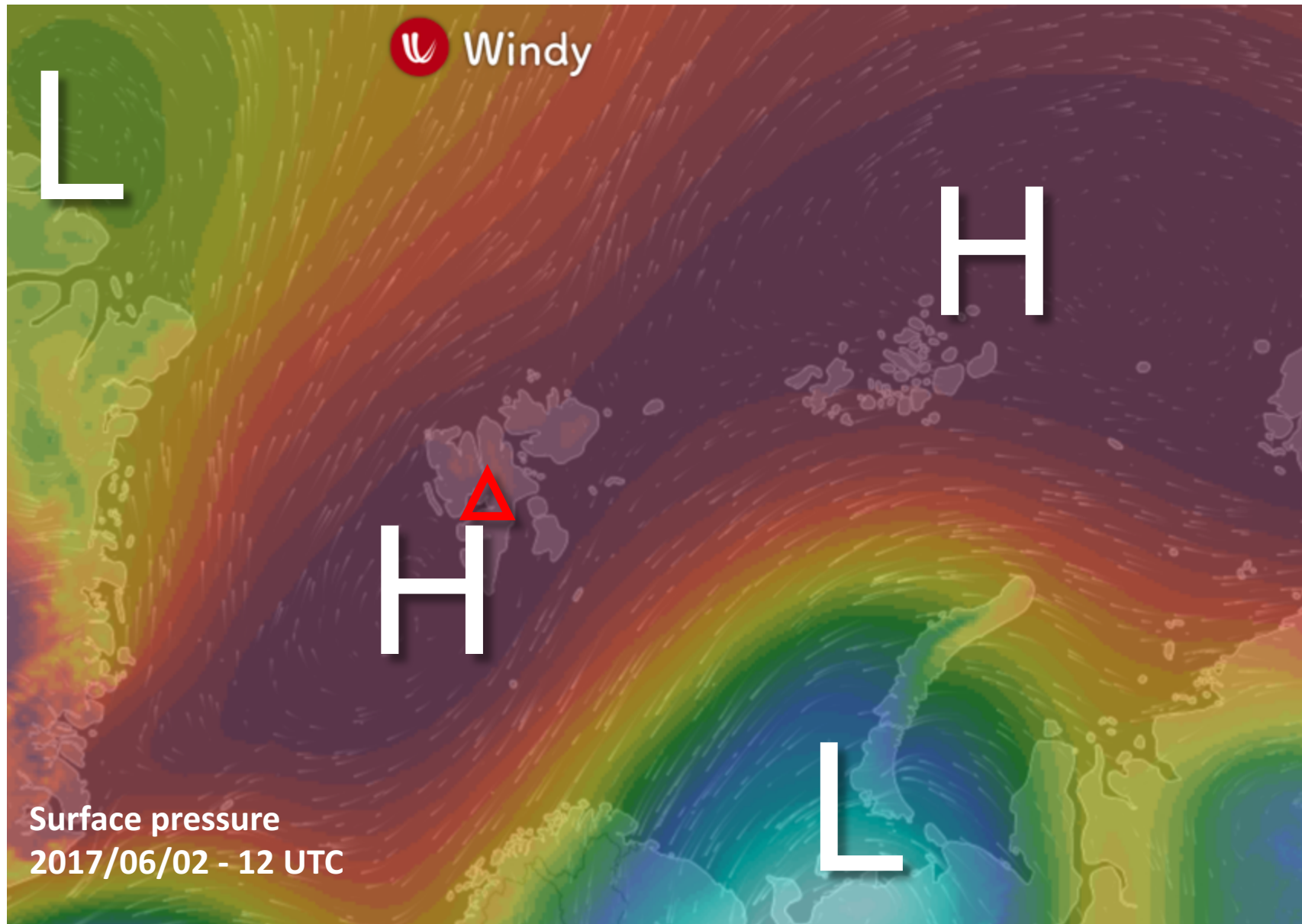
☆ RV Polarstern 31 May 80°01.5'N/8°08.7'E



Flight Day

Fri 02 June 2017

General Situation Fri 02 June 2017

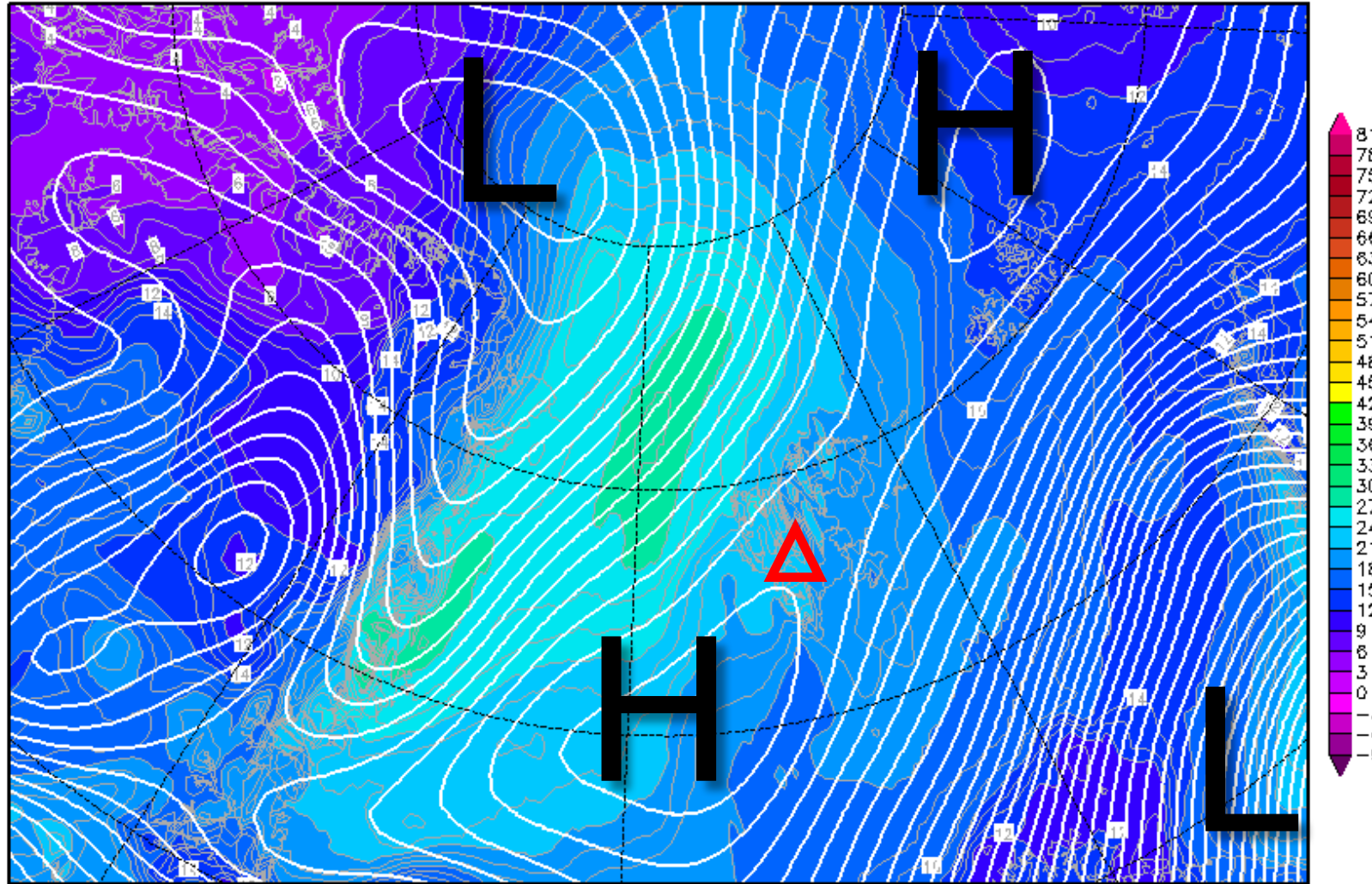


850-hPa Theta Equiv. 02 June 2017 @ 12 UTC

Init : Thu,01JUN2017 00Z

Valid: Fri,02JUN2017 12Z

Bodendruck (hPa) und 850 hPa Aeq.Pot.T. (Grad C)

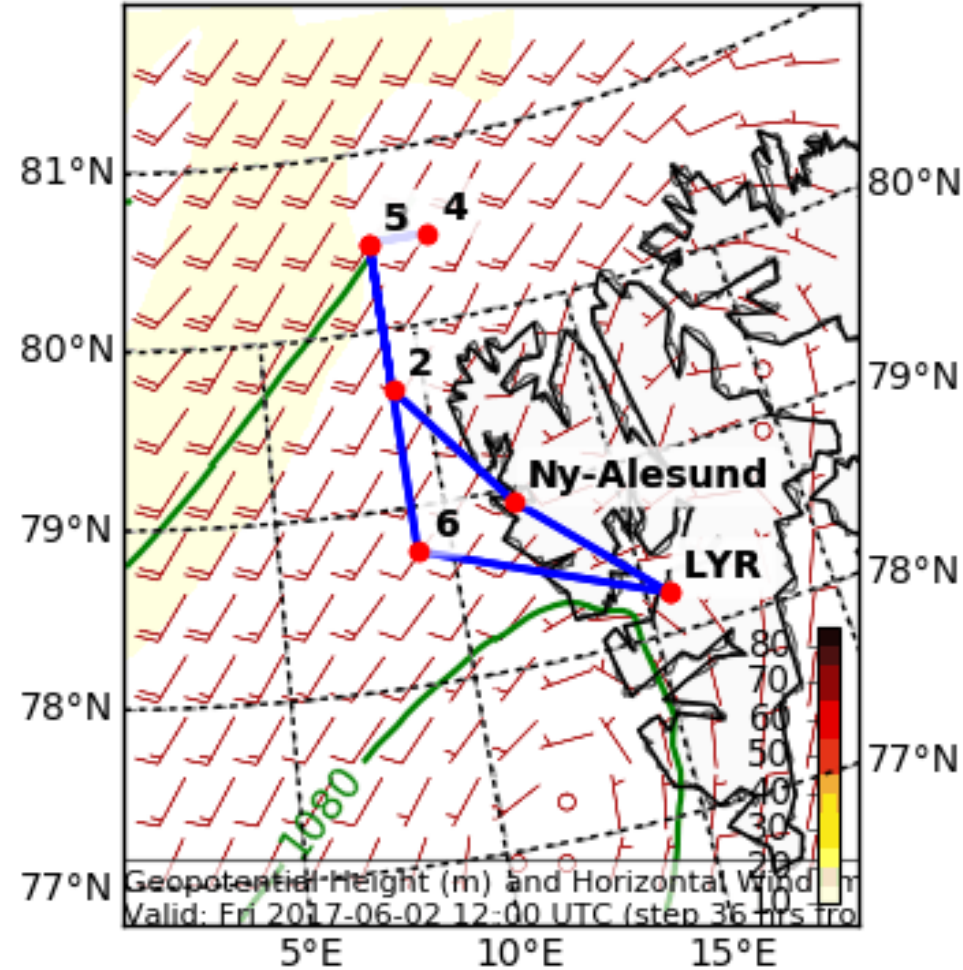


Daten: GFS-Modell des amerikanischen Wetterdienstes
(C) Wetterzentrale
www.wetterzentrale.de

Wind

Tomorrow 12 UTC

Geopotential Height (m) and Horizontal Wind (m/s) (Wind Speed 10-85 m/s)
Valid: Fri 2017-06-02 12:00 UTC (step 36 hrs from Thu 2017-06-01 00:00 UTC)

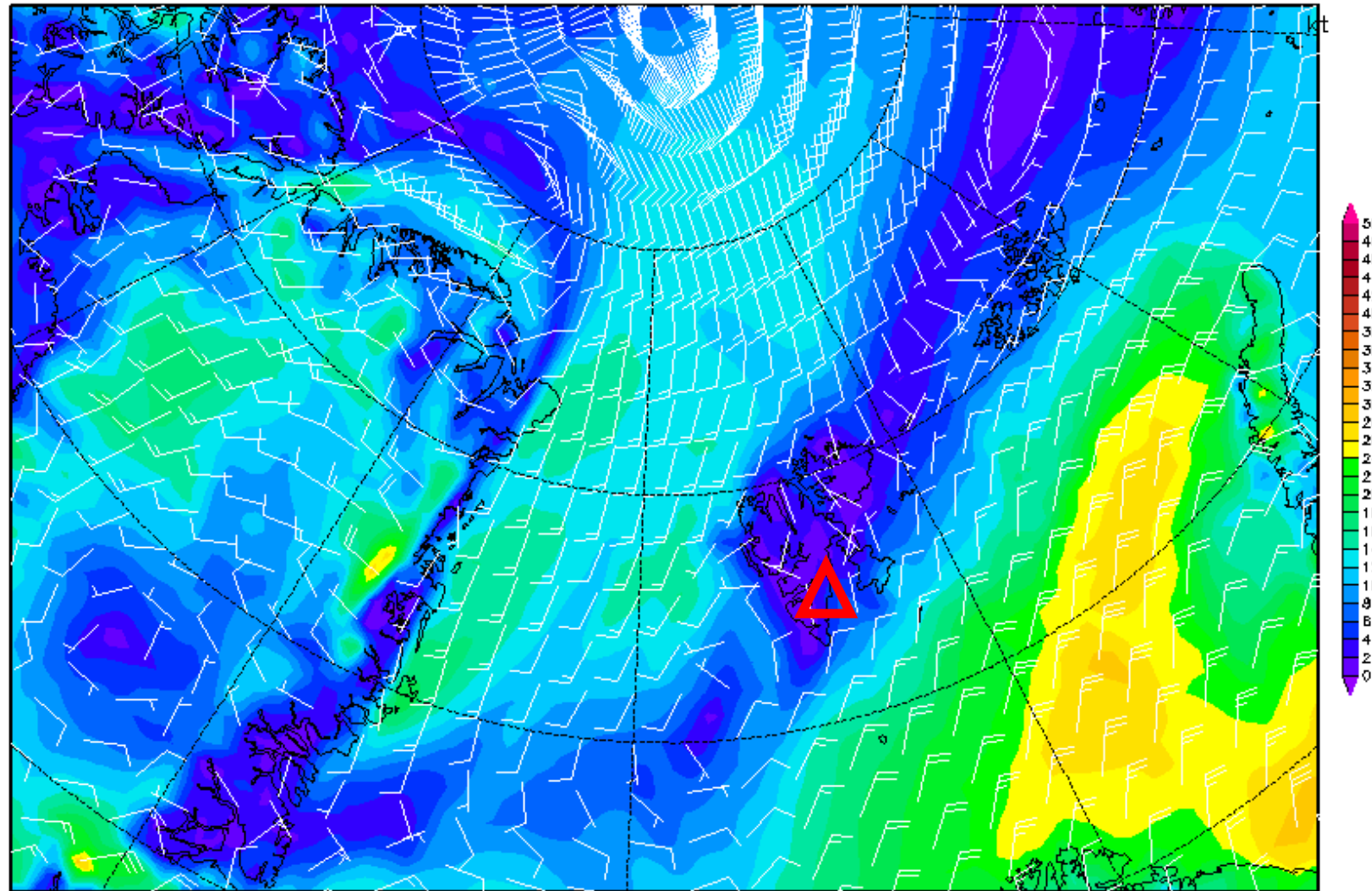


10-m Wind 02 June 2017 @ 12 UTC

Init : Thu,01JUN2017 00Z

Valid: Fri,02JUN2017 12Z

10m Wind (kt)



Daten: GFS-Modell des amerikanischen Wetterdienstes

(C) Wetterzentrale

www.wetterzentrale.de

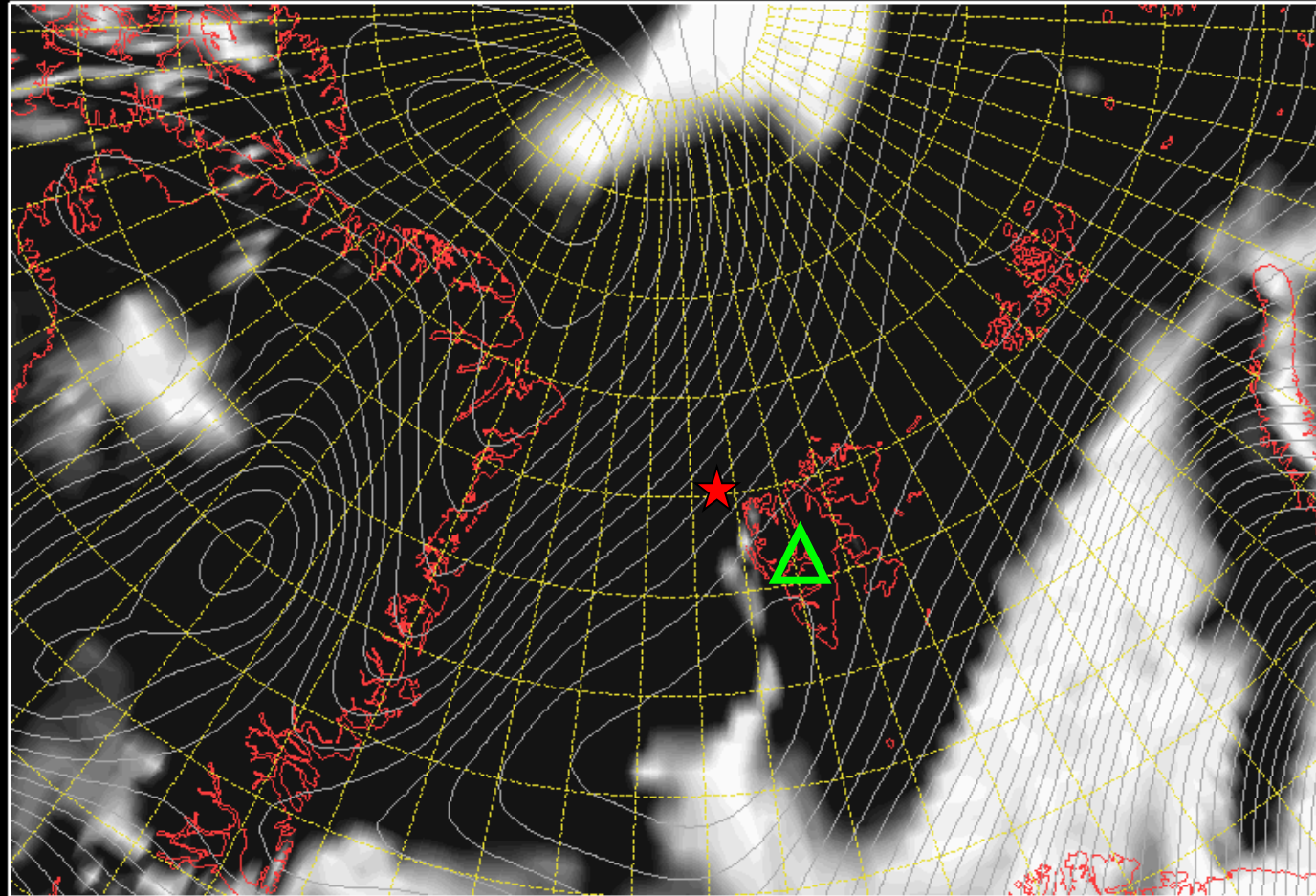
Low-level cloud cover 02 June 2017 @ 12 UTC

★ RV Polarstern (80°24' N / 7°20' E)

Init : Thu,01JUN2017 00Z

Valid: Fri,02JUN2017 12Z

Bodendruck, Tiefe Wolken und Grenzschicht-Wolken in %



Daten: GFS-Modell des amerikanischen Wetterdienstes

(C) W. J.

www.wetterzentrale.de 28 32 36 40 44 48 52 56 60 64 68 72 76 80 84 88 92 96 100

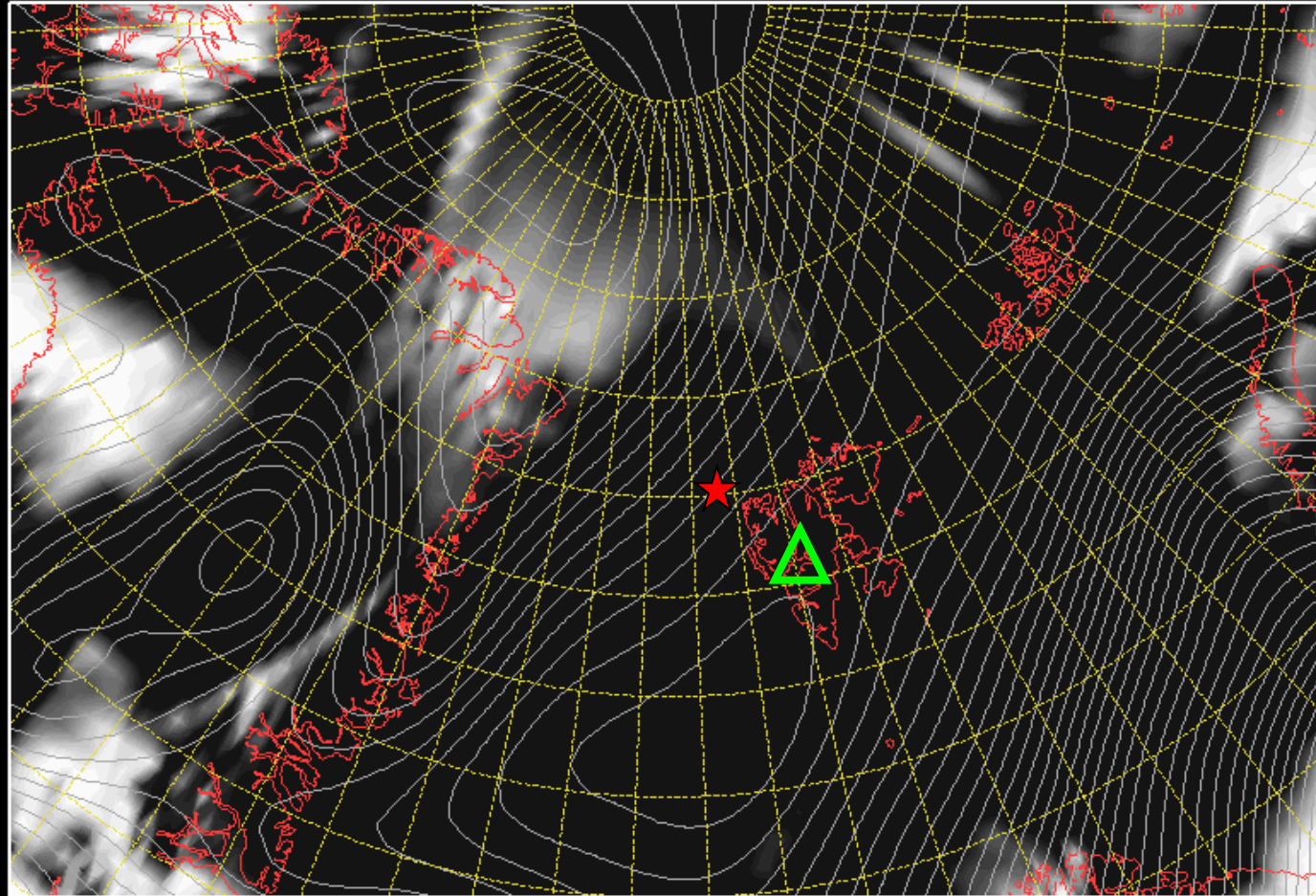
Mid-level cloud cover 02 June 2017 @ 12 UTC

★ RV Polarstern (80°24' N / 7°20' E)

Init : Thu,01JUN2017 00Z

Valid: Fri,02JUN2017 12Z

Bodendruck, Mittelhohe Wolken in %



Daten: GFS-Modell des amerikanischen Wetterdienstes

(C) W.:

www.wetterzentrale.de 28 32 36 40 44 48 52 56 60 64 68 72 76 80 84 88 92 96 100

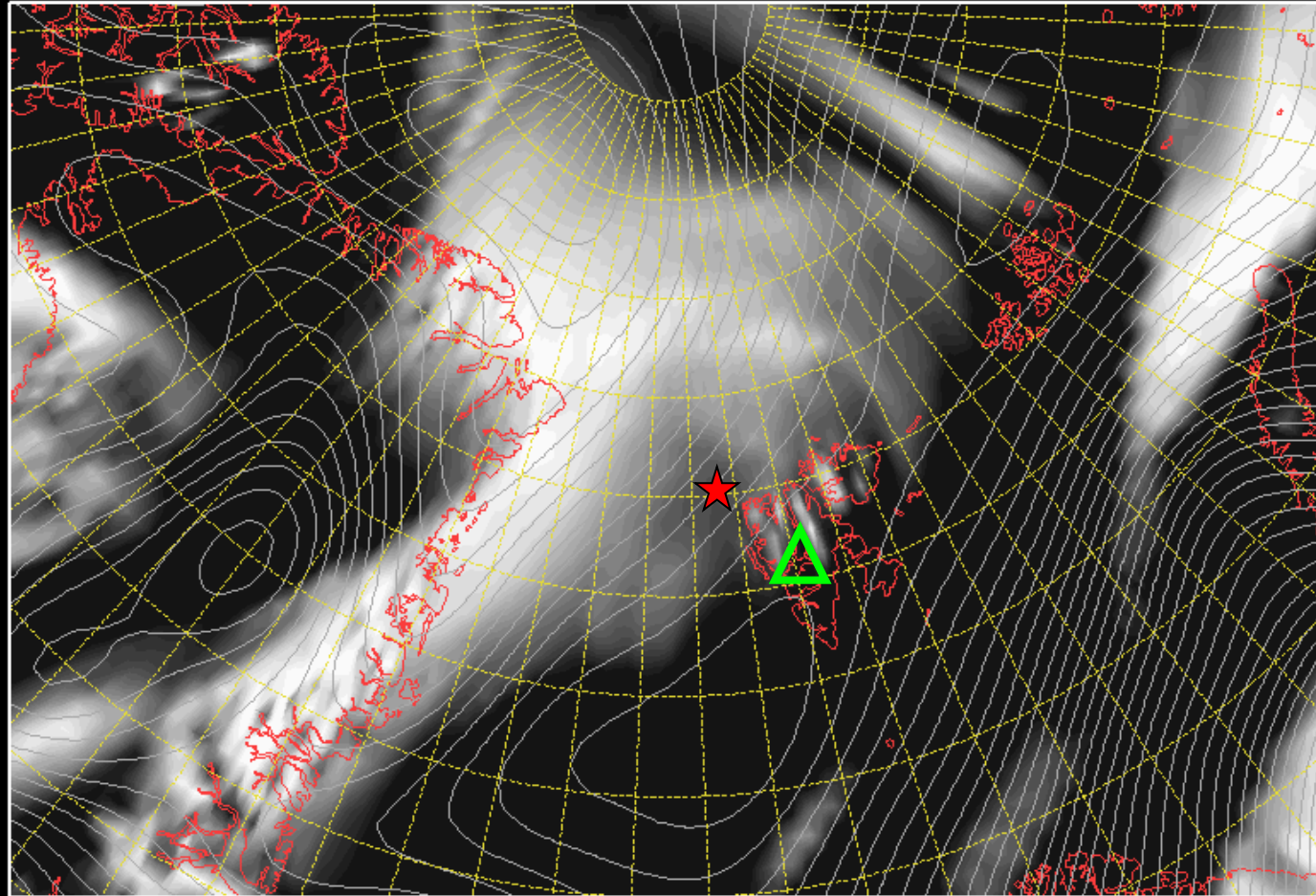
High-level cloud cover 02 June 2017 @ 12 UTC

★ RV Polarstern (80°24' N / 7°20' E)

Init : Thu,01JUN2017 00Z

Valid: Fri,02JUN2017 12Z

Bodendruck, Hohe Wolken in %



Daten: GFS-Modell des amerikanischen Wetterdienstes

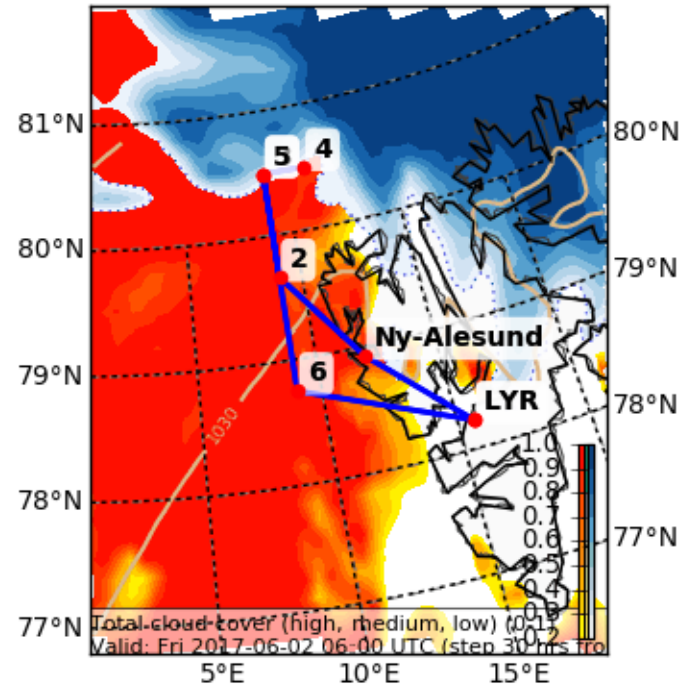
(C) W...

www.wetterzentrale.de 28 32 36 40 44 48 52 56 60 64 68 72 76 80 84 88 92 96 100

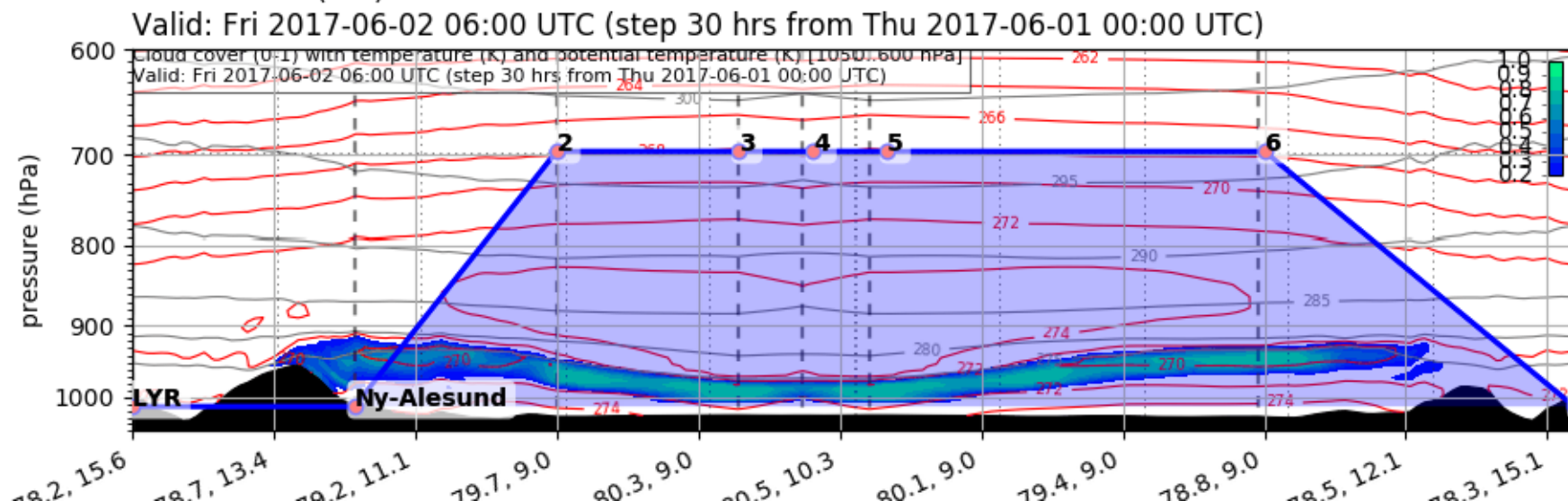
Forecast Tomorrow 06 UTC

Cloud Cover (0-1) (Total Cloud Cover)

Valid: Fri 2017-06-02 06:00 UTC (step 30 hrs from Thu 2017-06-01 00:00 UTC)



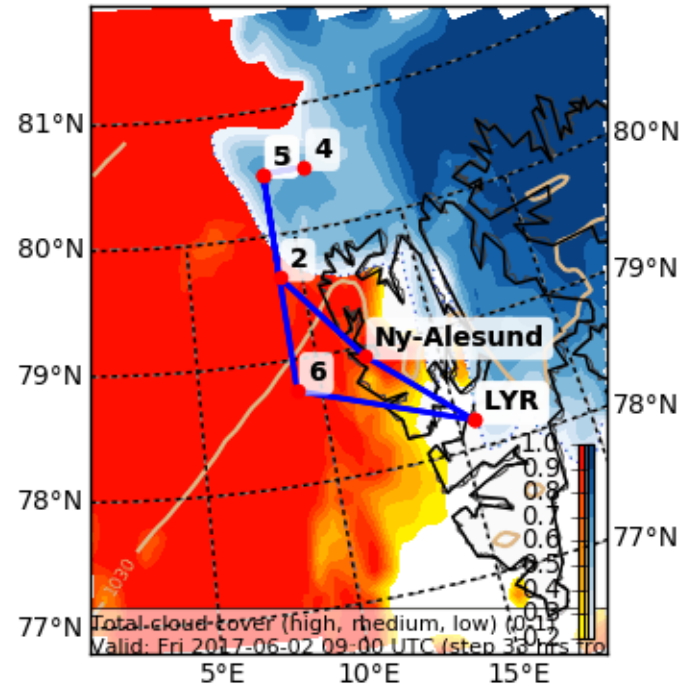
EPSG:77790000



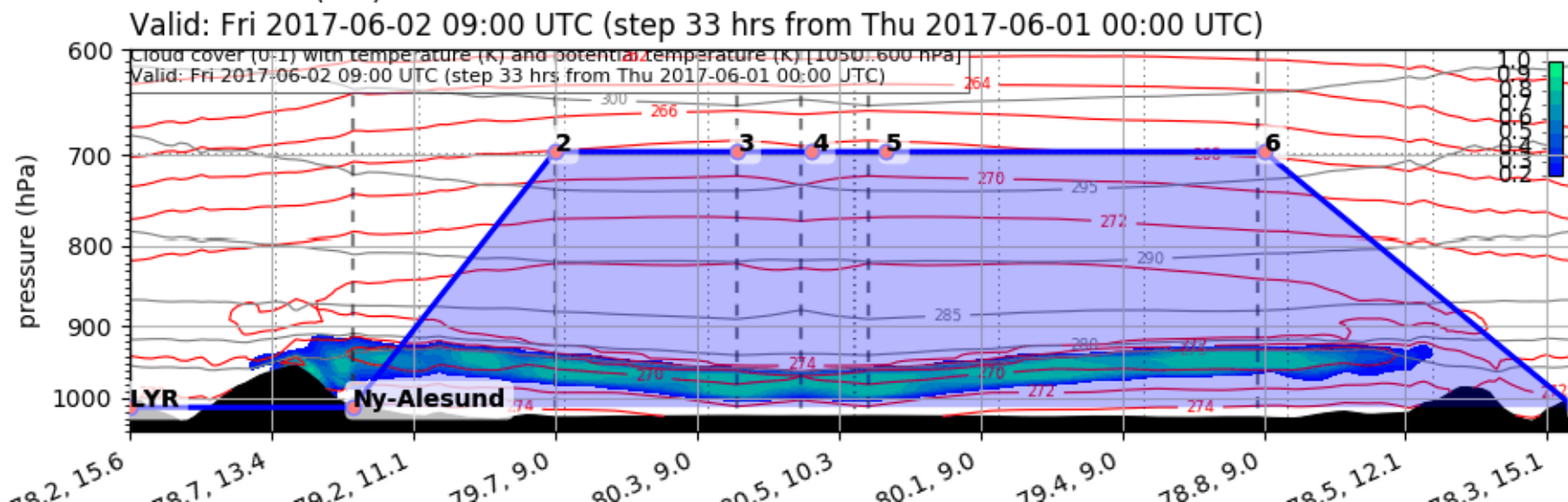
Forecast Tomorrow 09 UTC

Cloud Cover (0-1) (Total Cloud Cover)

Valid: Fri 2017-06-02 09:00 UTC (step 33 hrs from Thu 2017-06-01 00:00 UTC)



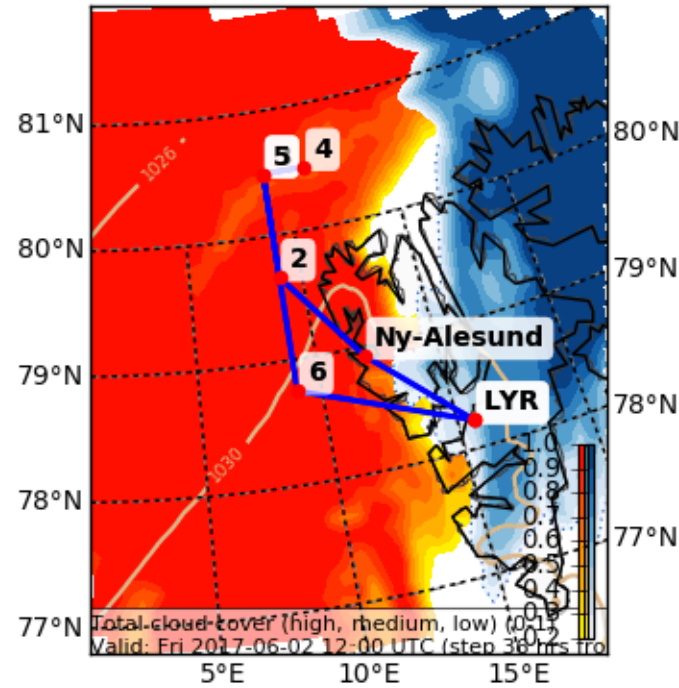
EPSG:77790000



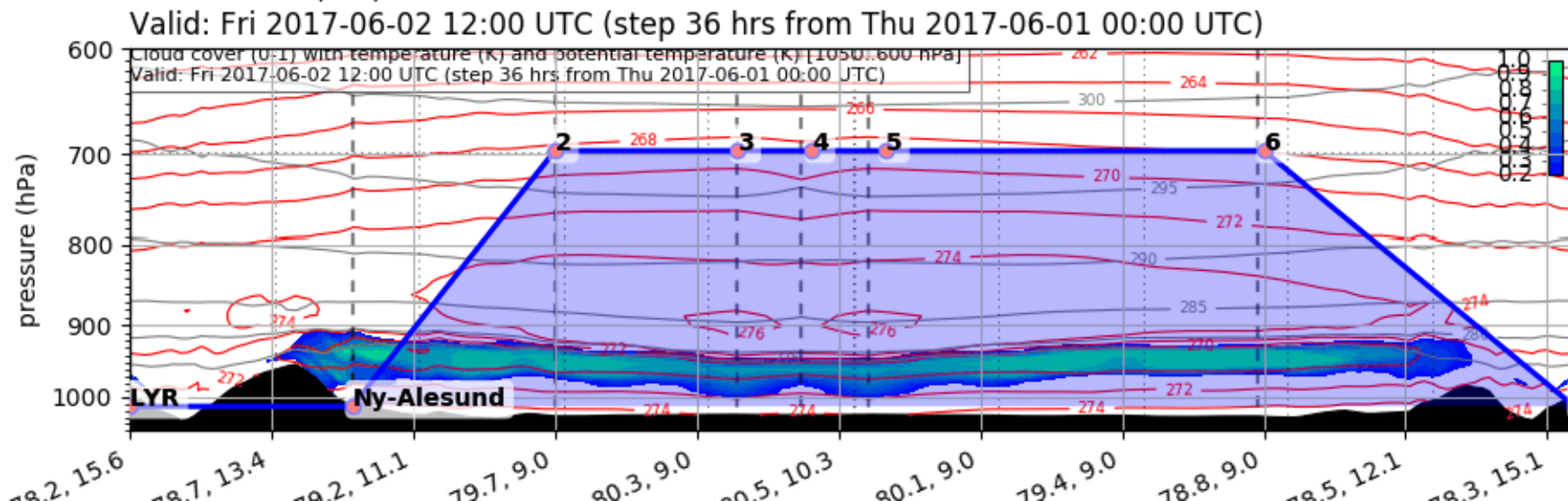
Forecast Tomorrow 12 UTC

Cloud Cover (0-1) (Total Cloud Cover)

Valid: Fri 2017-06-02 12:00 UTC (step 36 hrs from Thu 2017-06-01 00:00 UTC)



EPSG:77790000

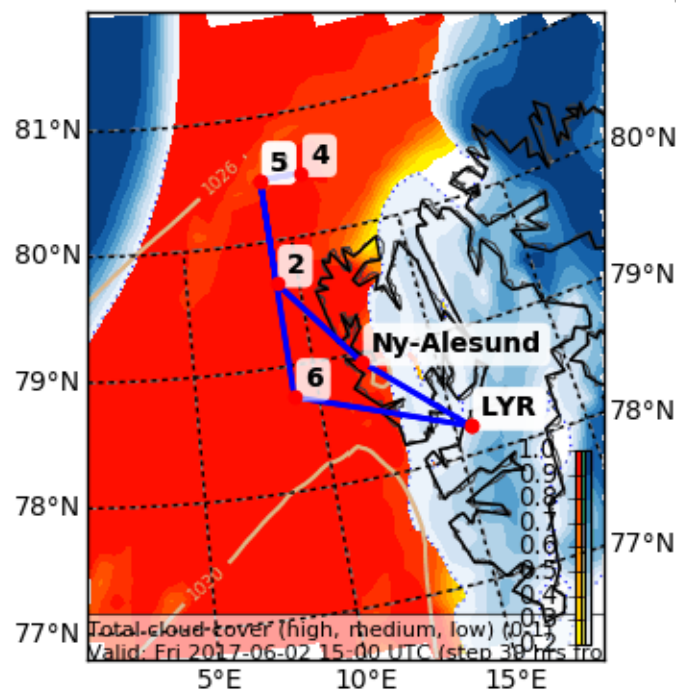


Forecast

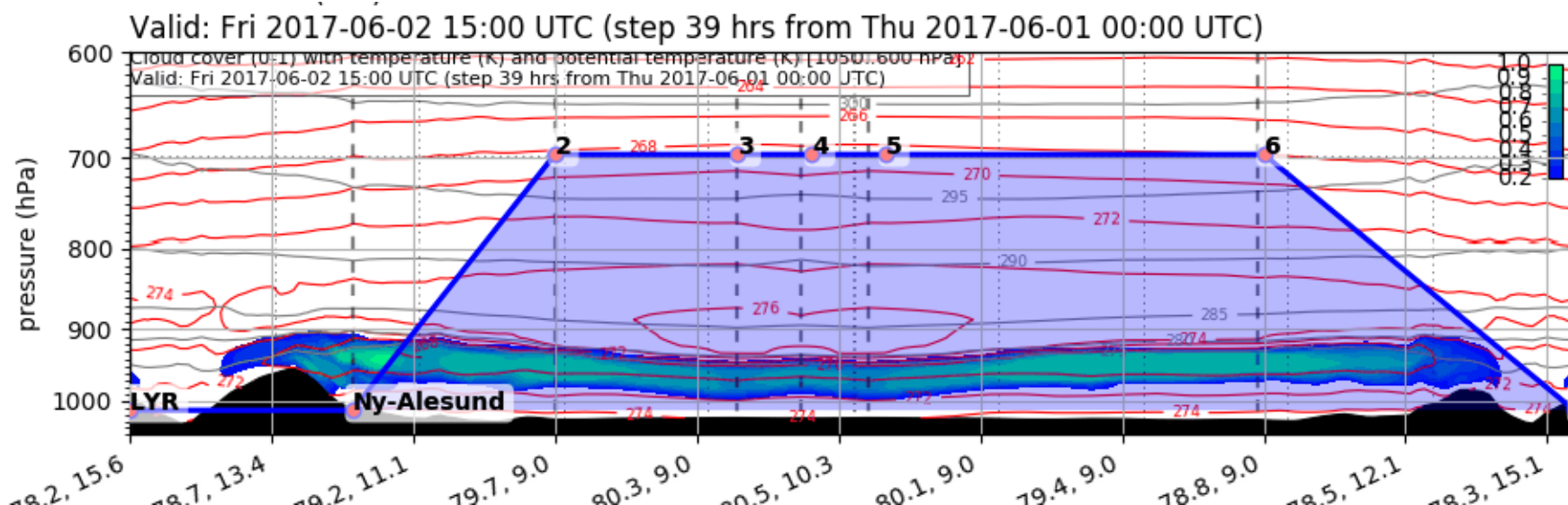
Tomorrow 15 UTC

Cloud Cover (0-1) (Total Cloud Cover)

Valid: Fri 2017-06-02 15:00 UTC (step 39 hrs from Thu 2017-06-01 00:00 UTC)



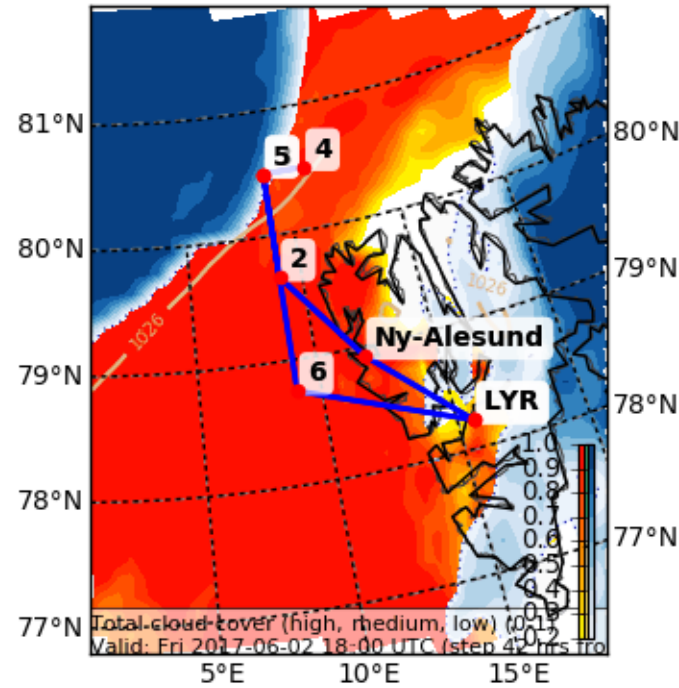
EPSG:77790000



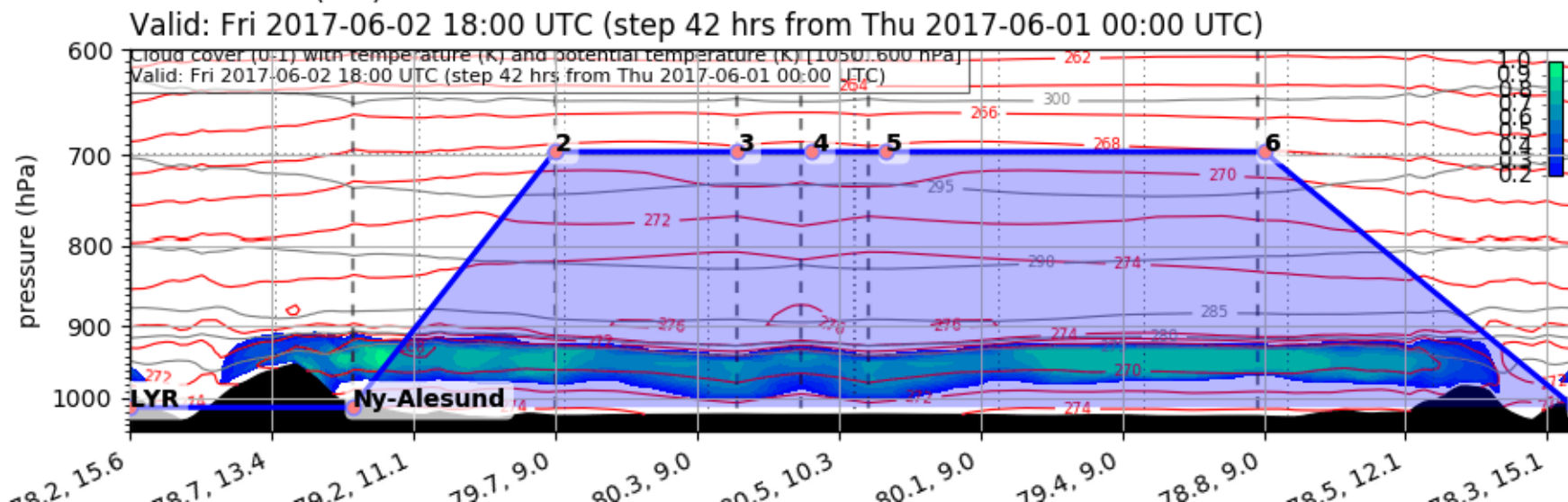
Forecast Tomorrow 18 UTC

Cloud Cover (0-1) (Total Cloud Cover)

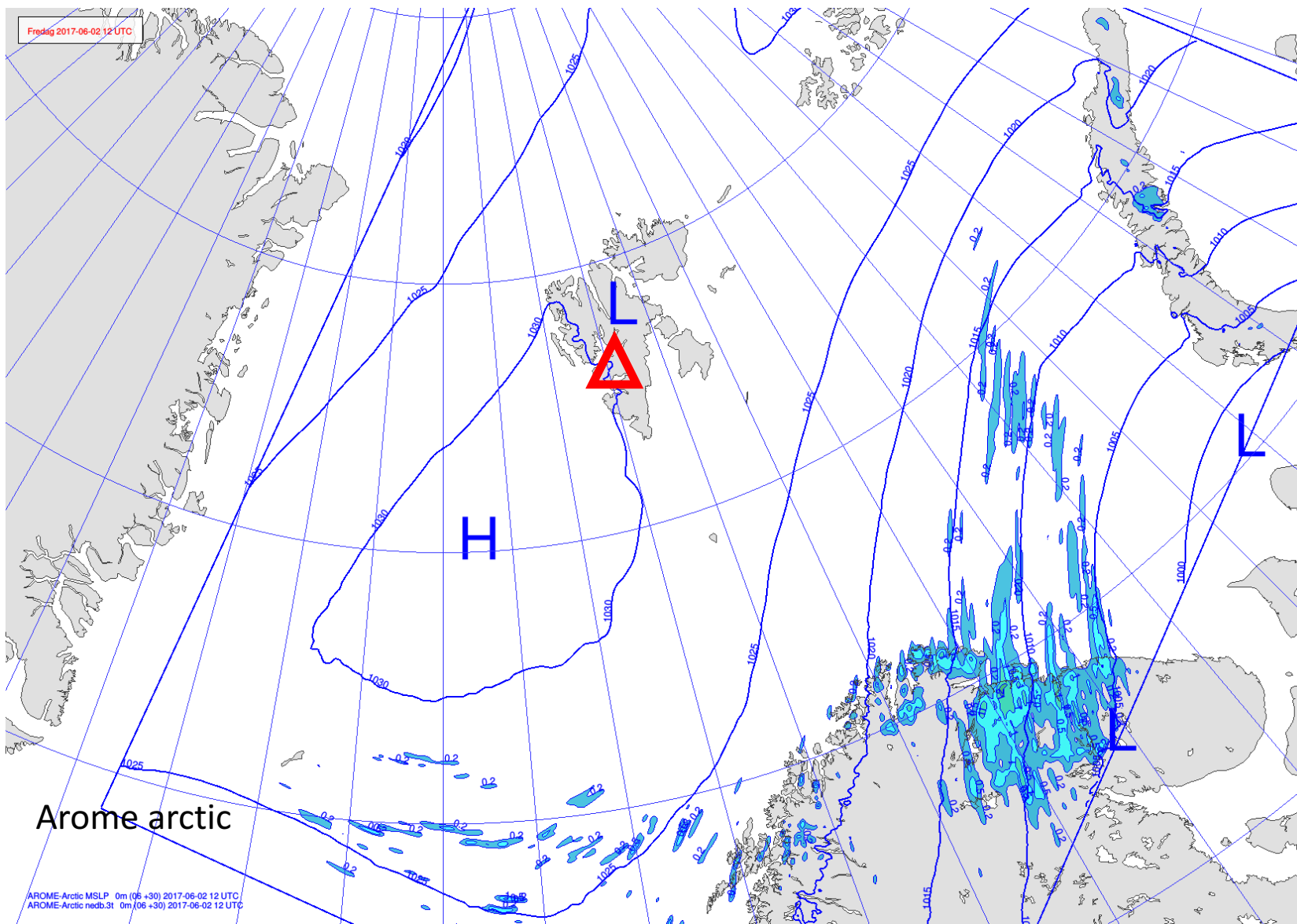
Valid: Fri 2017-06-02 18:00 UTC (step 42 hrs from Thu 2017-06-01 00:00 UTC)



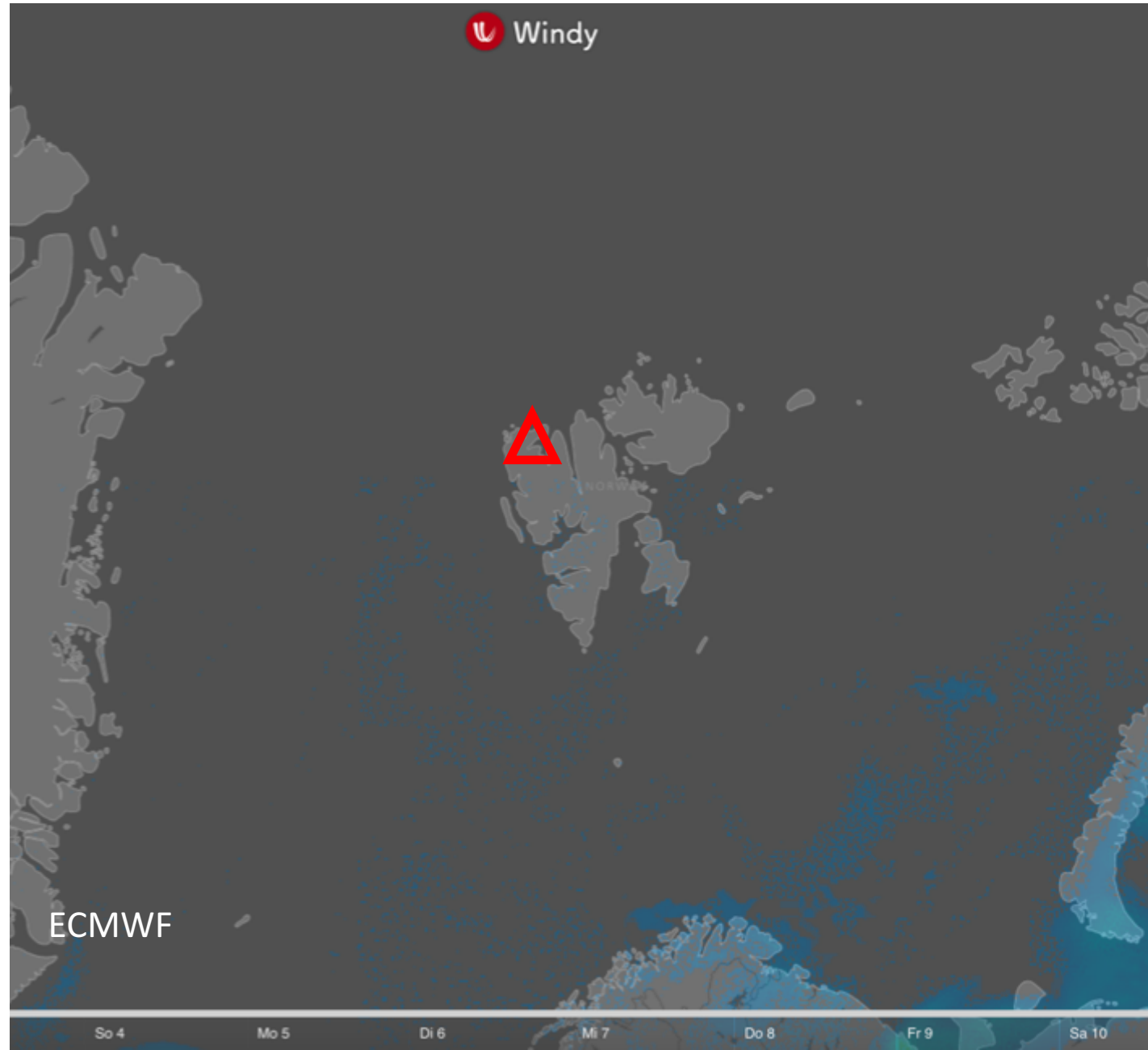
EPSG:77790000



Precipitation 2 June 2017 @ 12 UTC



Precipitation 2 June 2017 @ 12 UTC

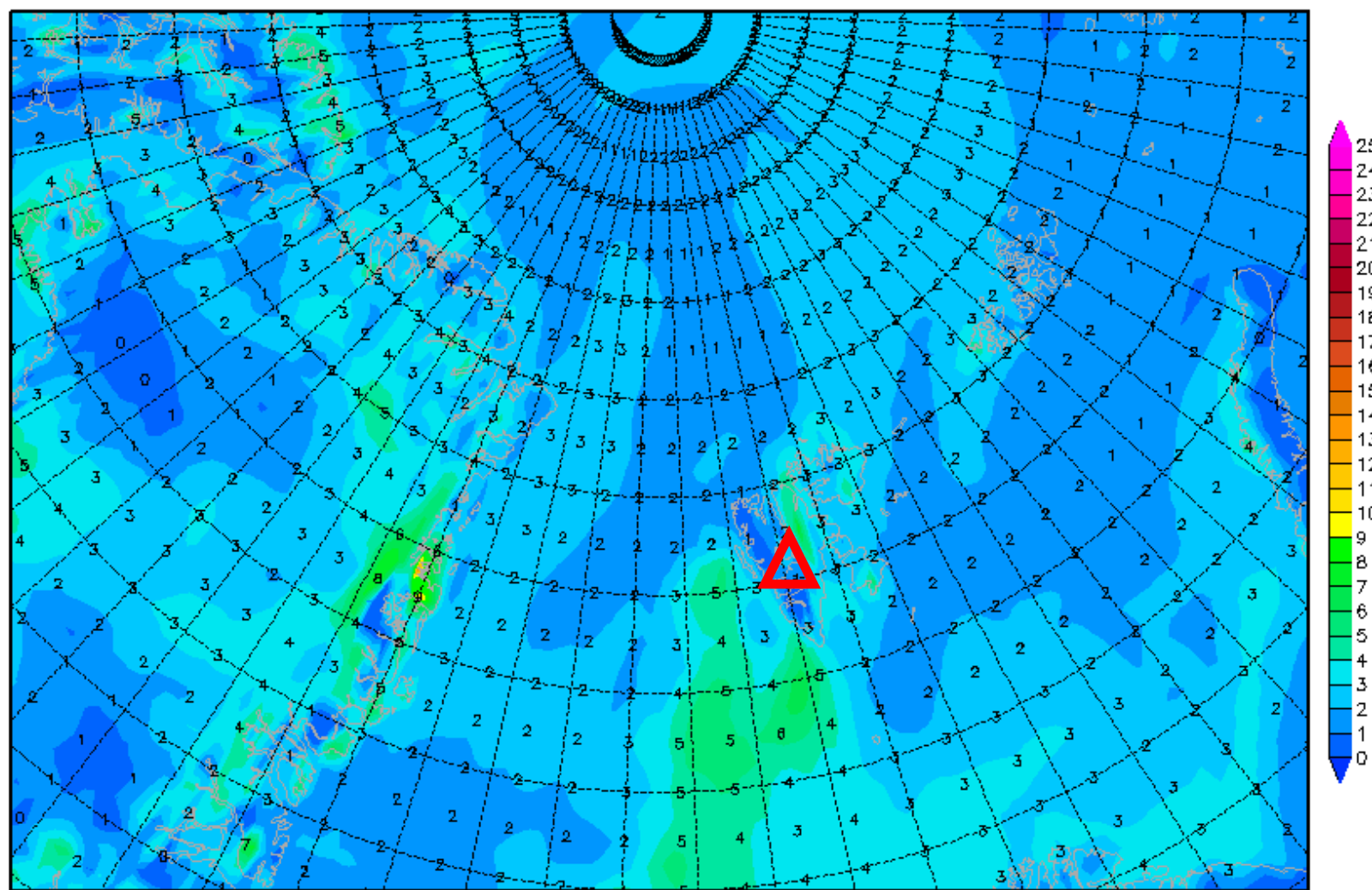


2-m dew point diff. 2 June 2017 @ 12 UTC

Init : Thu,01JUN2017 00Z

Valid: Fri,02JUN2017 12Z

2m (Temperatur-Taupunkt)



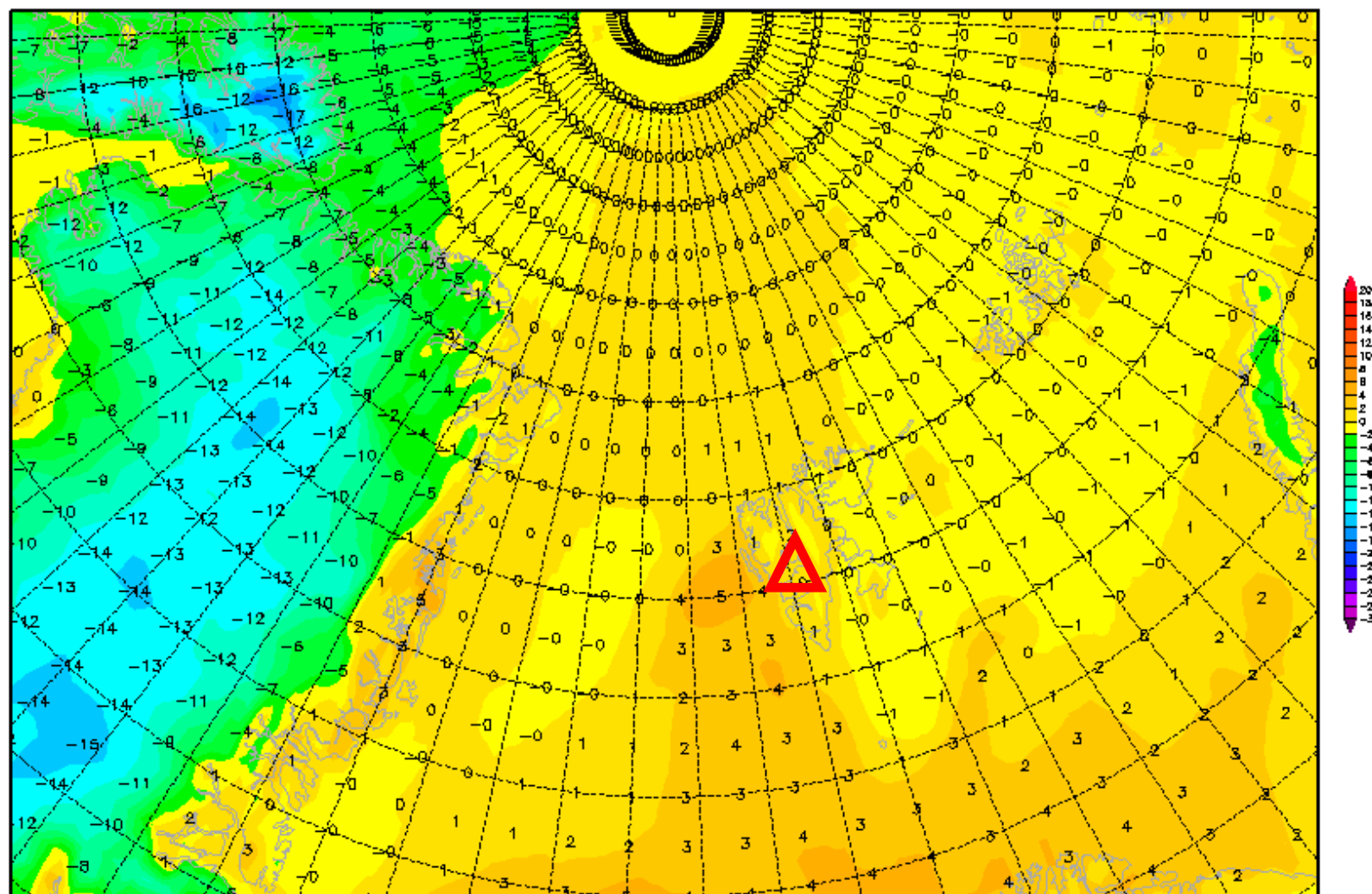
Daten: GFS
(C) Wetterzentrale
www.wetterzentrale.de

2-m temperature 2 June 2017 @ 12 UTC

Init : Thu,01JUN2017 00Z

Valid: Fri,02JUN2017 12Z

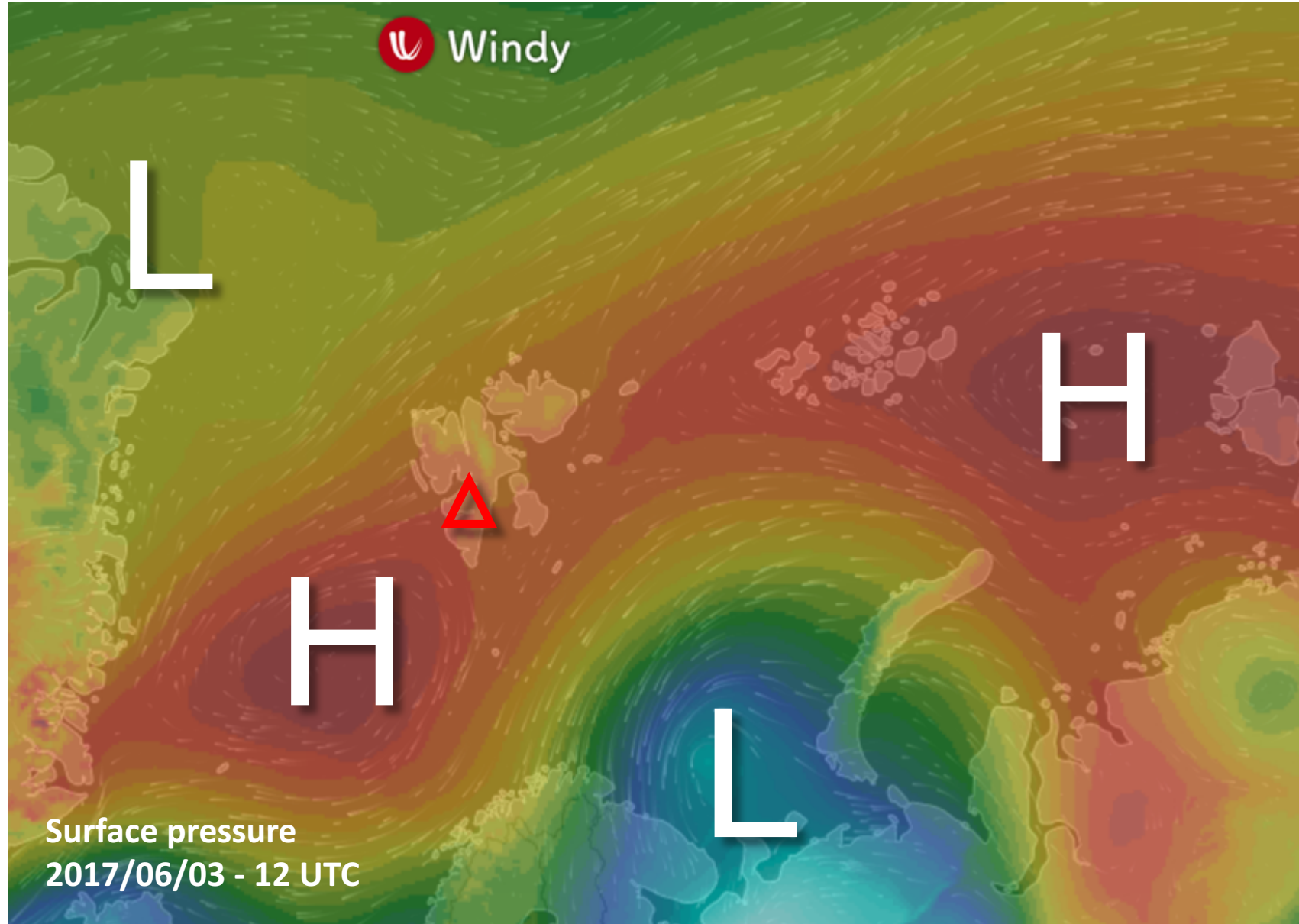
2m Temperatur (°C)



Outlook

Sat 3 June – Sun 4 June 2017

General Situation Sat 3 June 2017

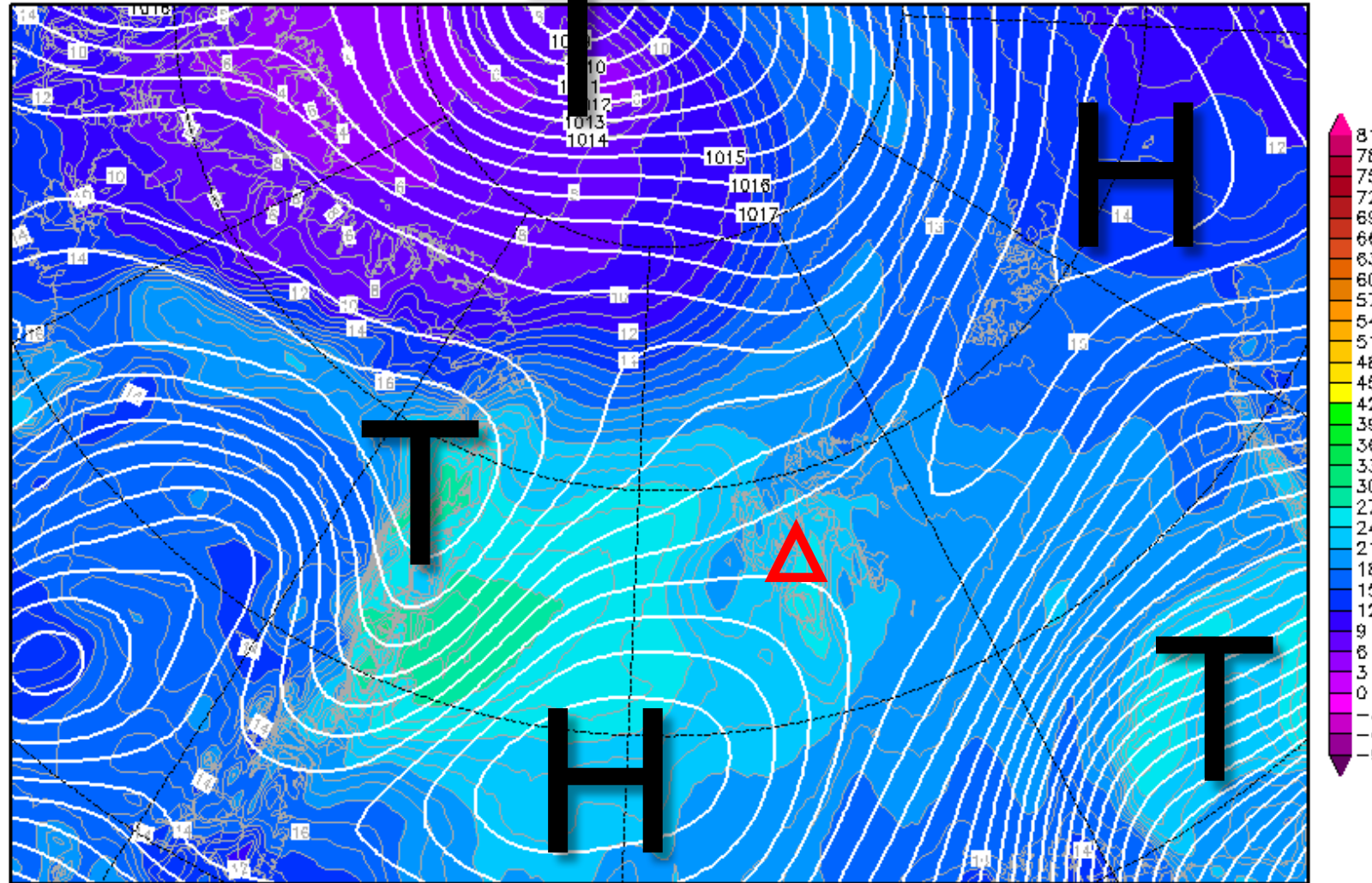


850-hPa Theta Equiv. 3 June 2017 @ 12 UTC

Init : Thu,01JUN2017 00Z

Valid: Sat,03JUN2017 12Z

Bodendruck (hPa) und 850 hPa Aeq.Pot.T. (Grad C)



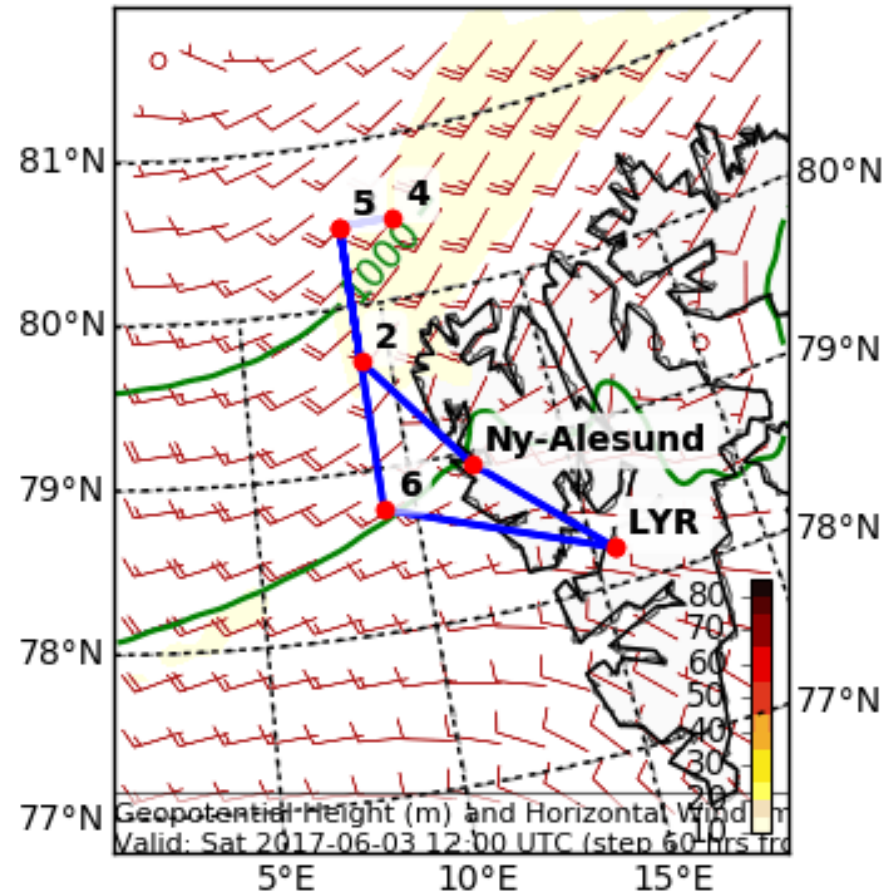
Daten: GFS-Modell des amerikanischen Wetterdienstes

(C) Wetterzentrale

www.wetterzentrale.de

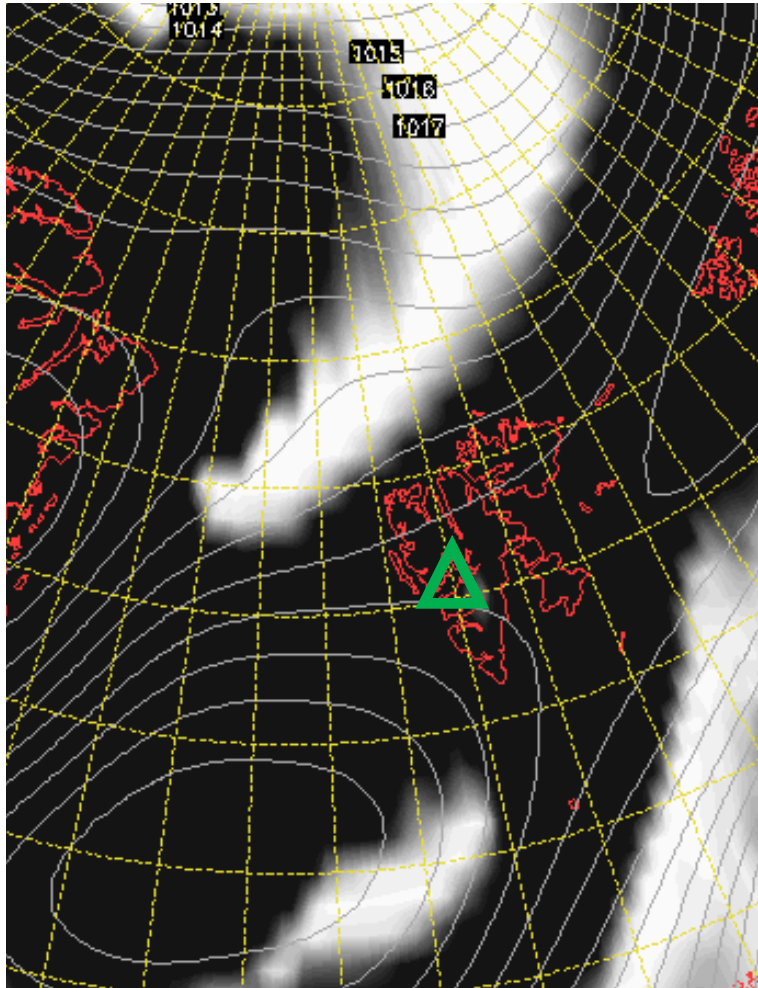
Wind, After Tomorrow 12 UTC

Geopotential Height (m) and Horizontal Wind (m/s) (Wind Speed 10-85 m/s)
Valid: Sat 2017-06-03 12:00 UTC (step 60 hrs from Thu 2017-06-01 00:00 U

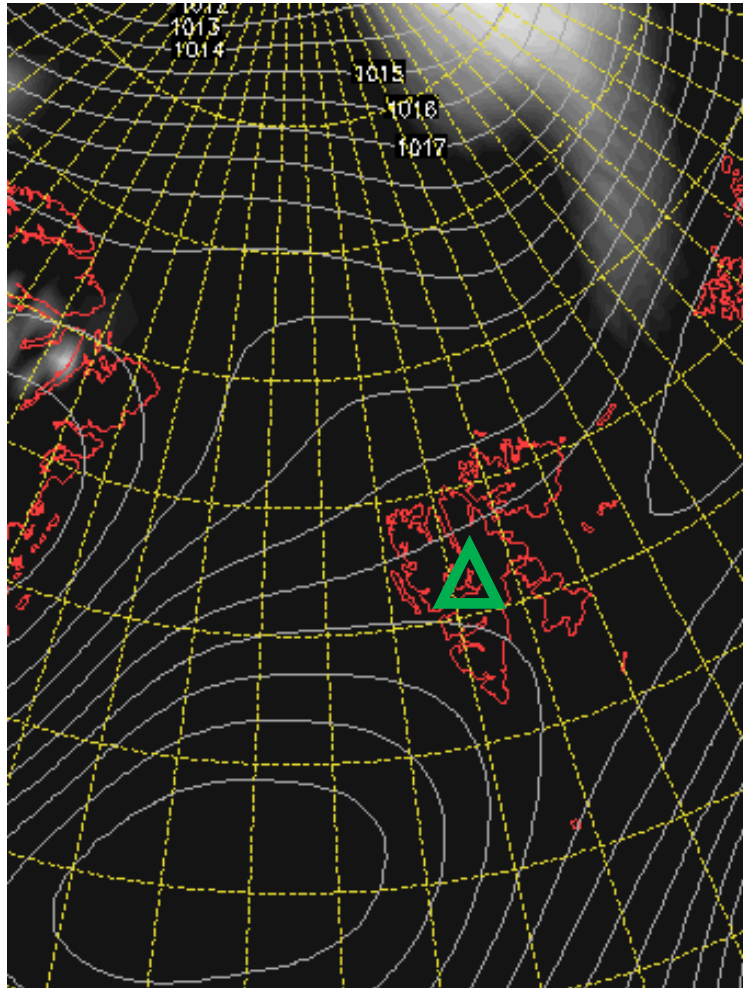


Cloud Cover 3 June 2017 @ 12 UTC

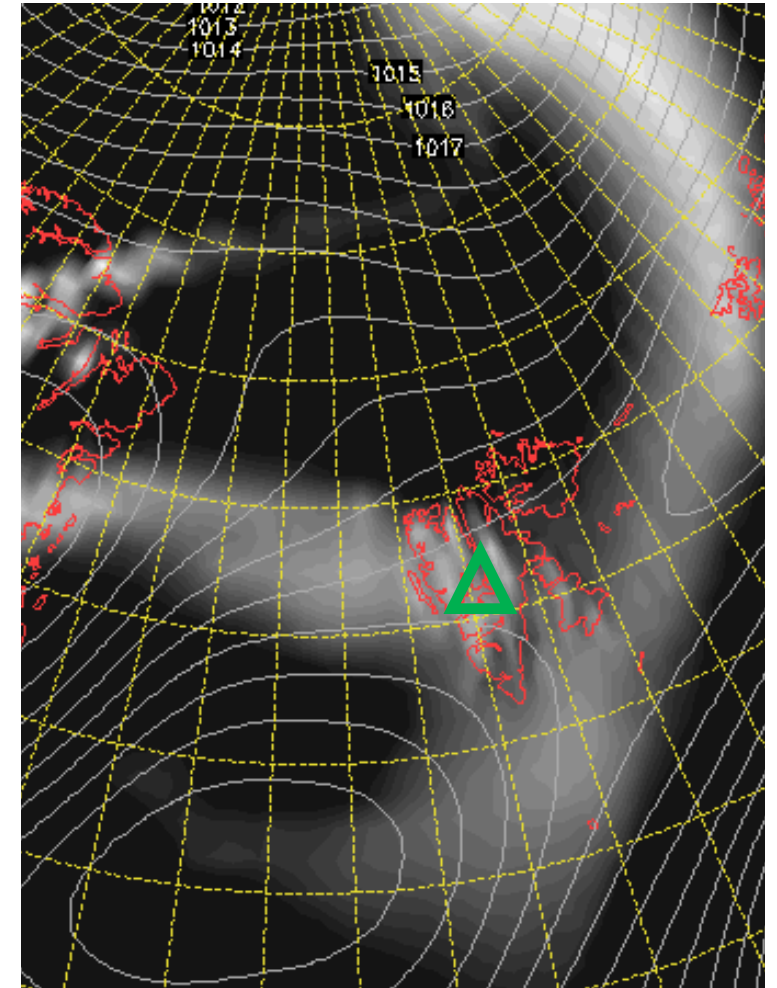
L



M

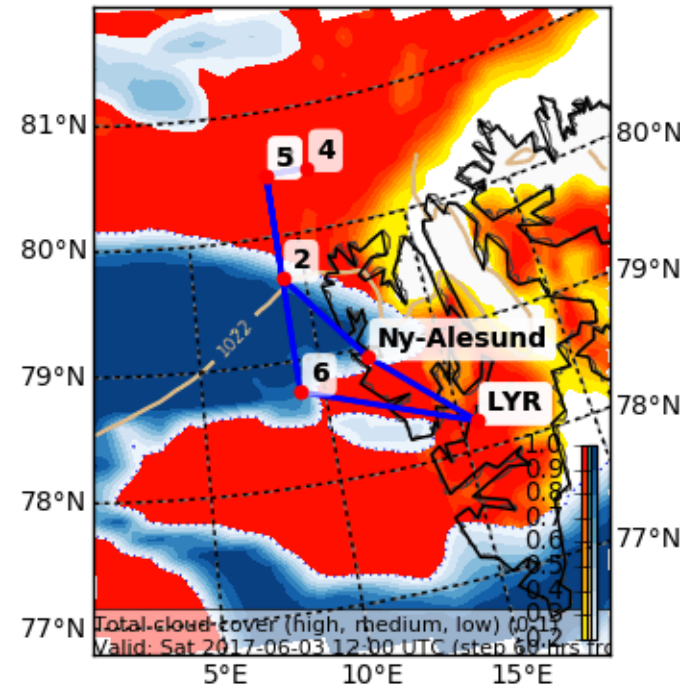


H

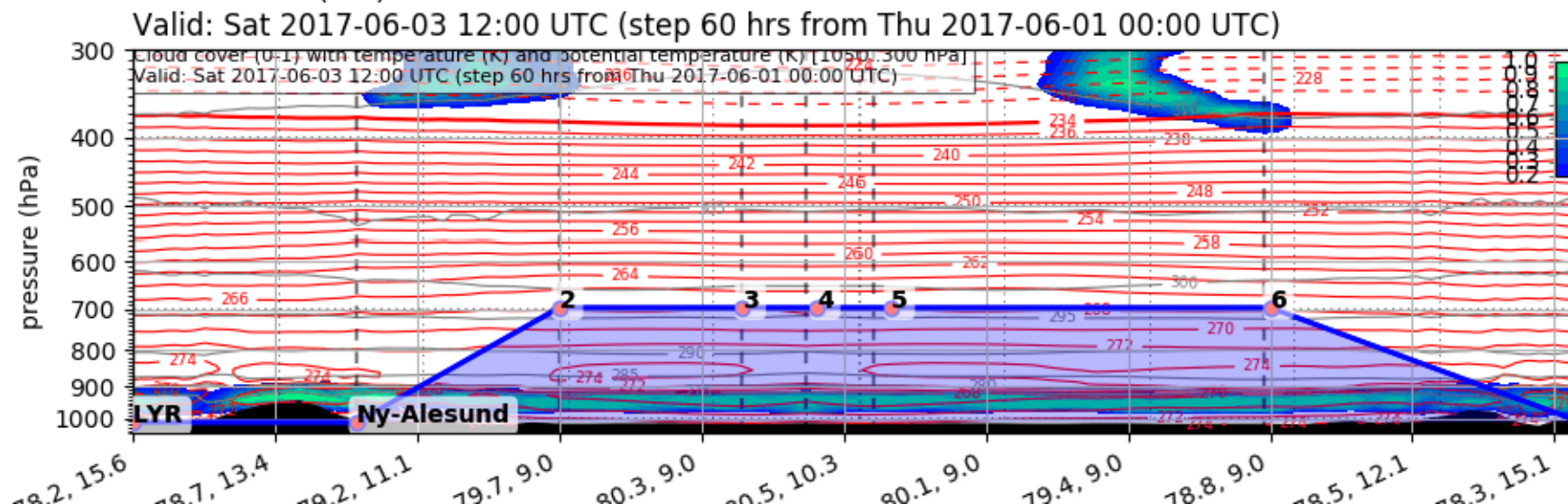


Forecast After Tomorrow 12 UTC

Cloud Cover (0-1) (Total Cloud Cover)
Valid: Sat 2017-06-03 12:00 UTC (step 60 hrs from Thu 2017-06-01 00:00 U



EPSG:77790000

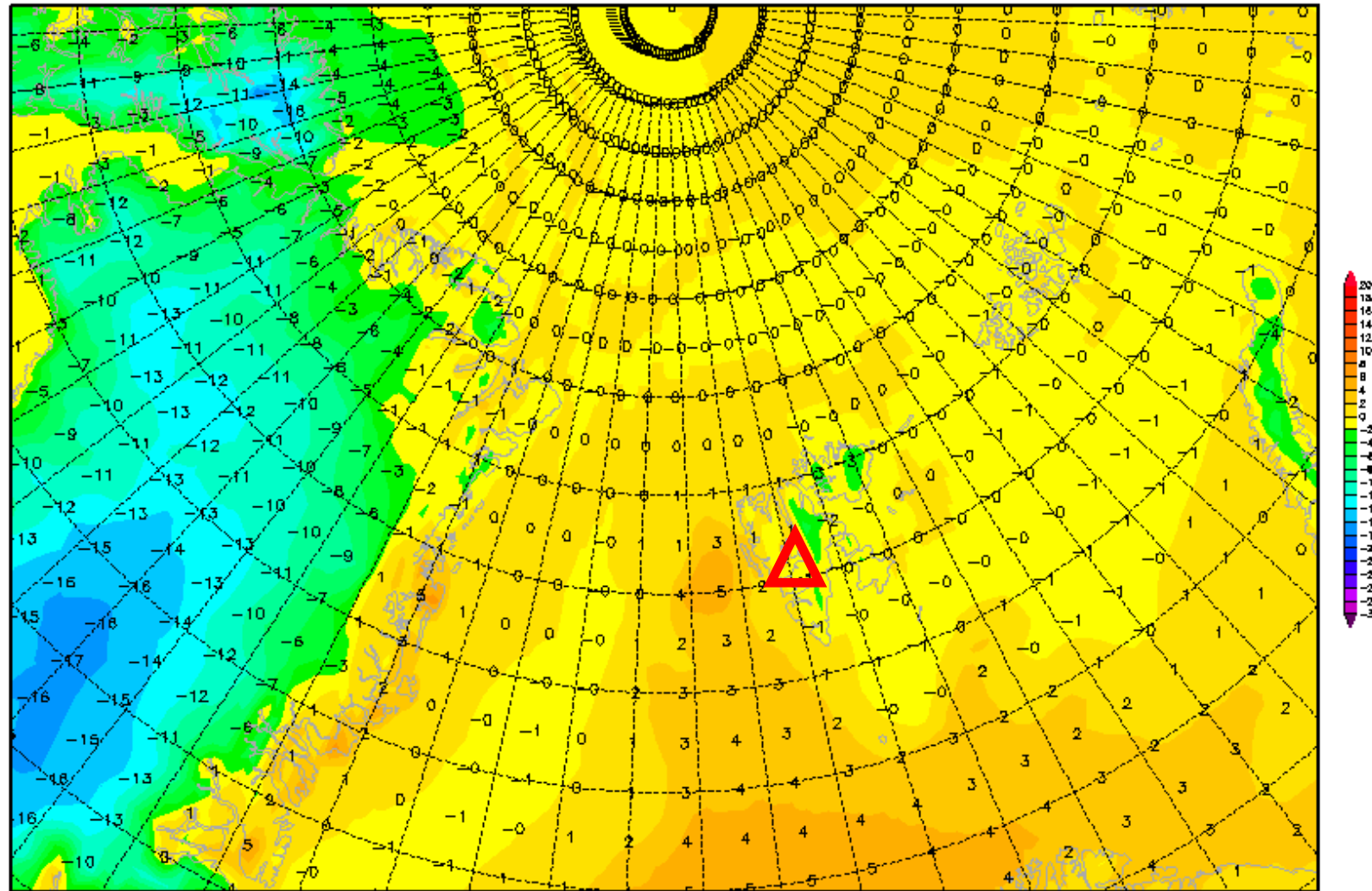


2-m temperature 3 June 2017 @ 12 UTC

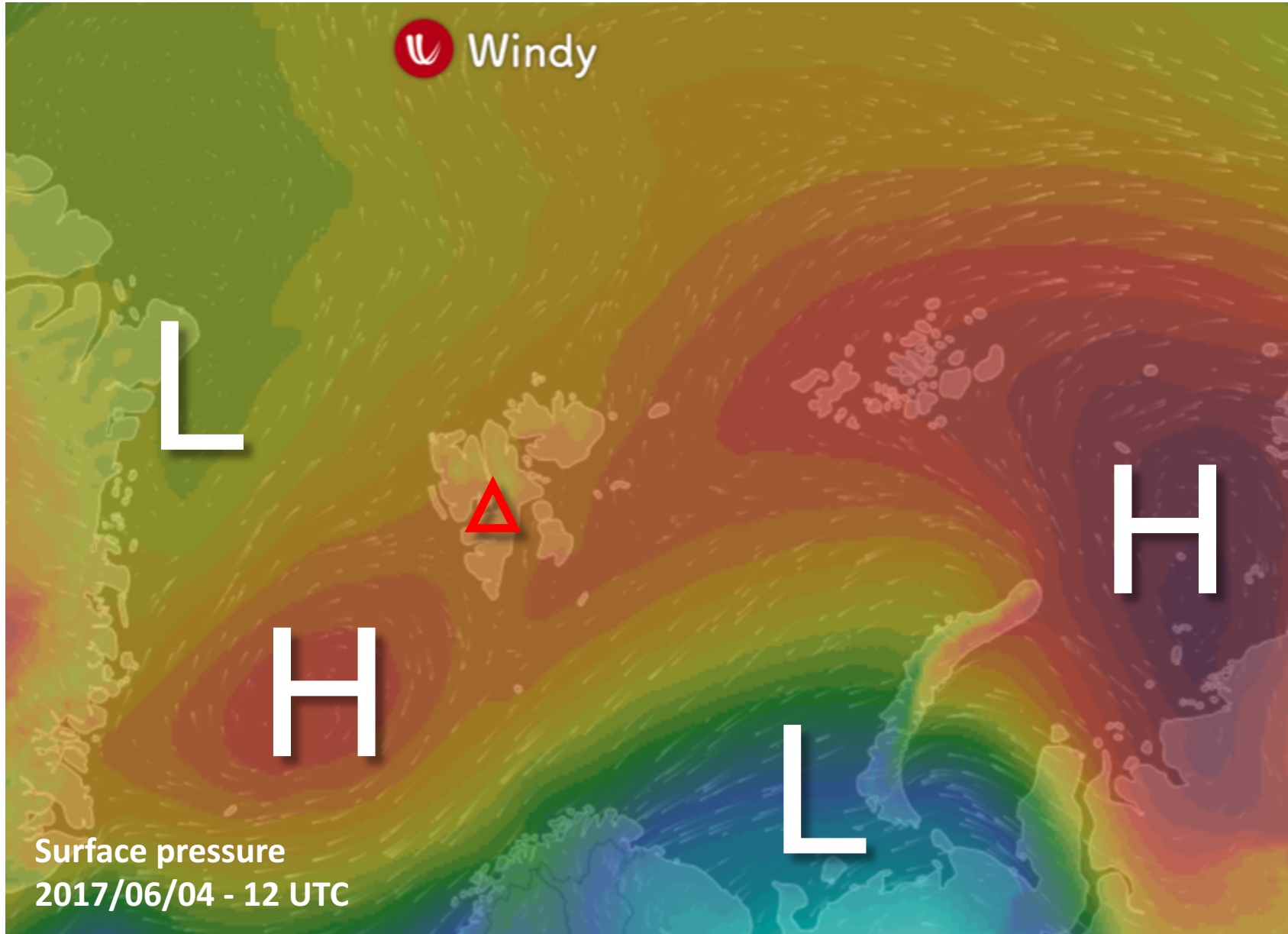
Init : Tue,30MAY2017 00Z

Valid: Thu,01JUN2017 12Z

2m Temperatur (°C)



General Situation Sun 4 June 2017

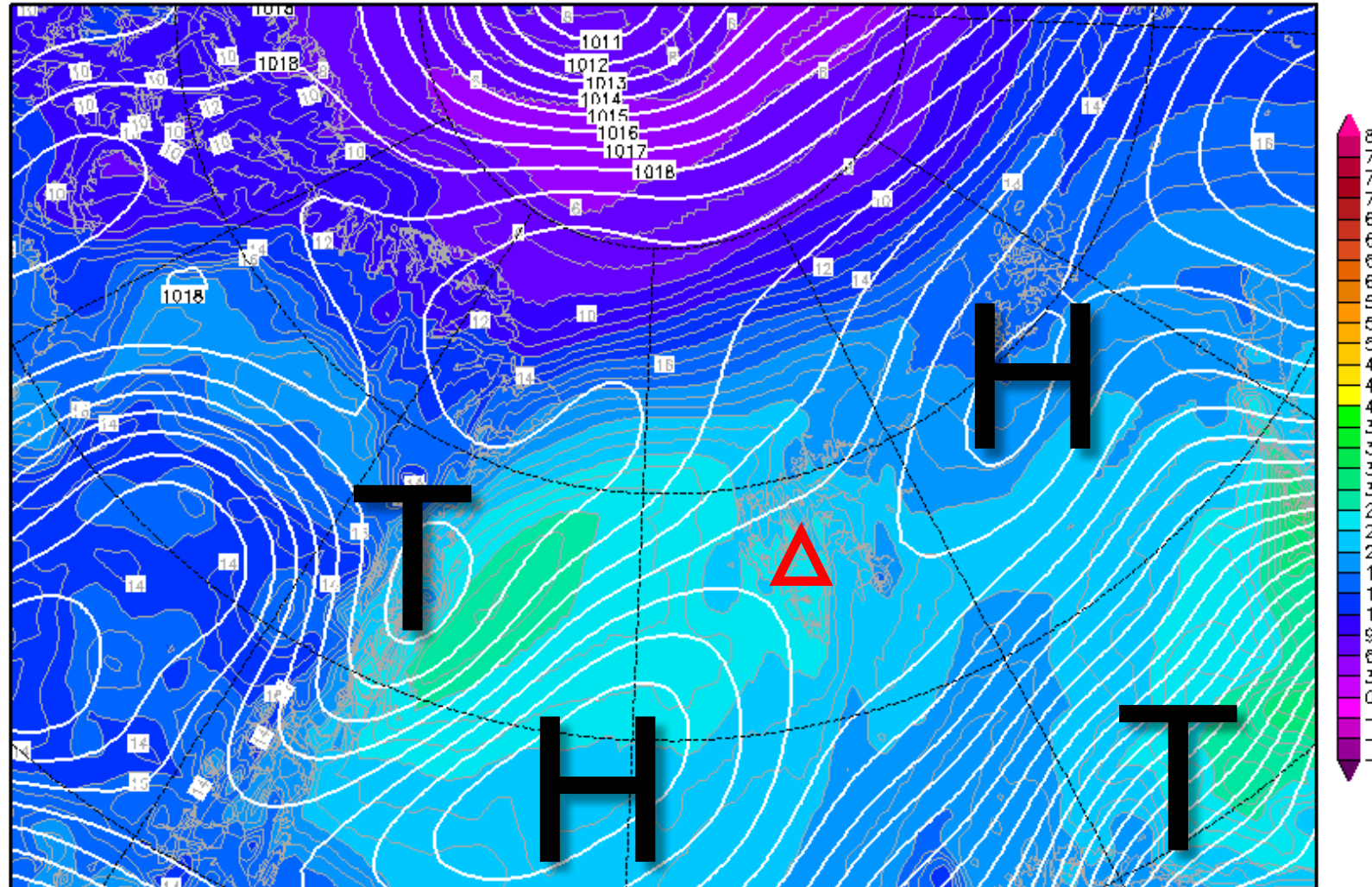


850-hPa Theta Equiv. 4 June 2017 @ 12 UTC

Init : Thu,01JUN2017 00Z

Valid: Sun,04JUN2017 12Z

Bodendruck (hPa) und 850 hPa Aeq.Pot.T. (Grad C)



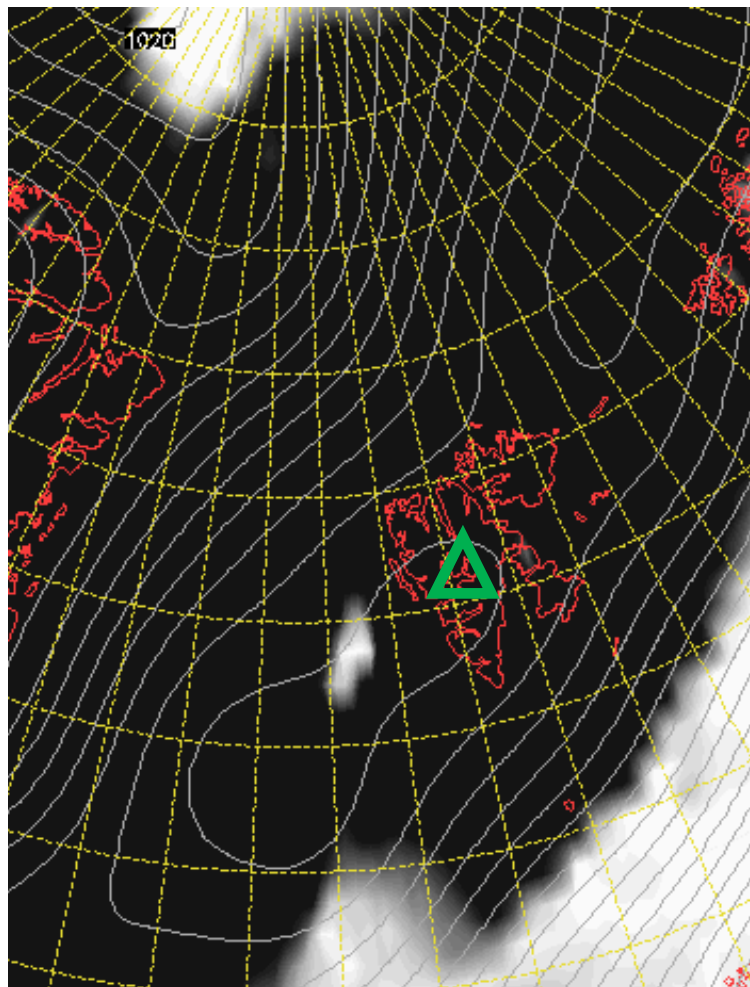
Daten: GFS-Modell des amerikanischen Wetterdienstes

(C) Wetterzentrale

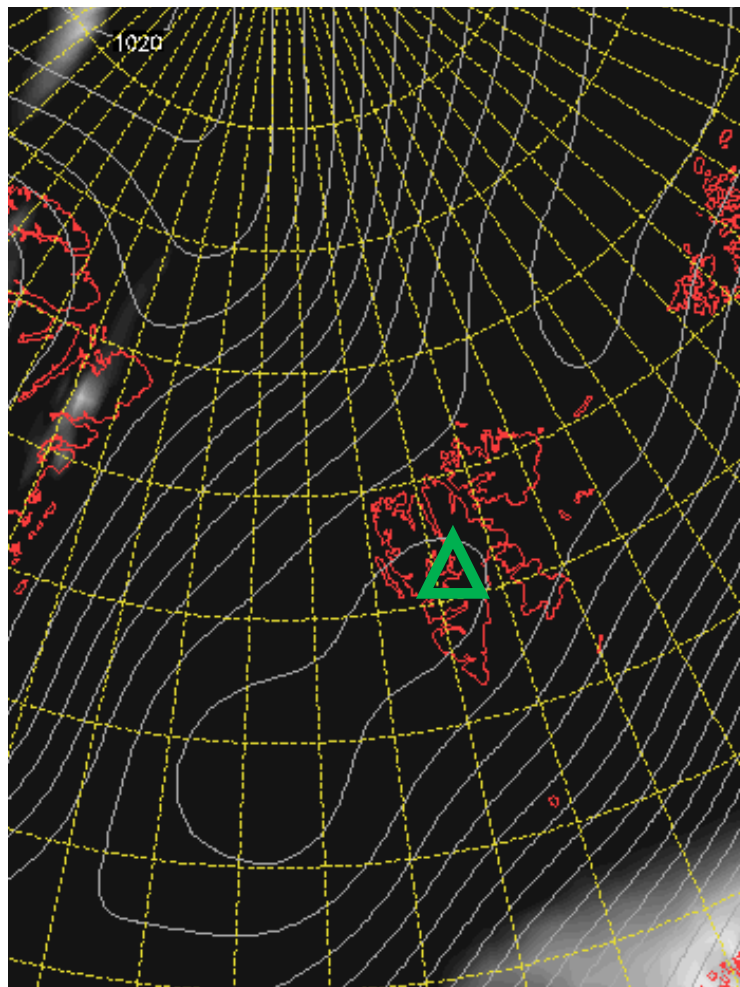
www.wetterzentrale.de

Cloud Cover 2 June 2017 @ 12 UTC

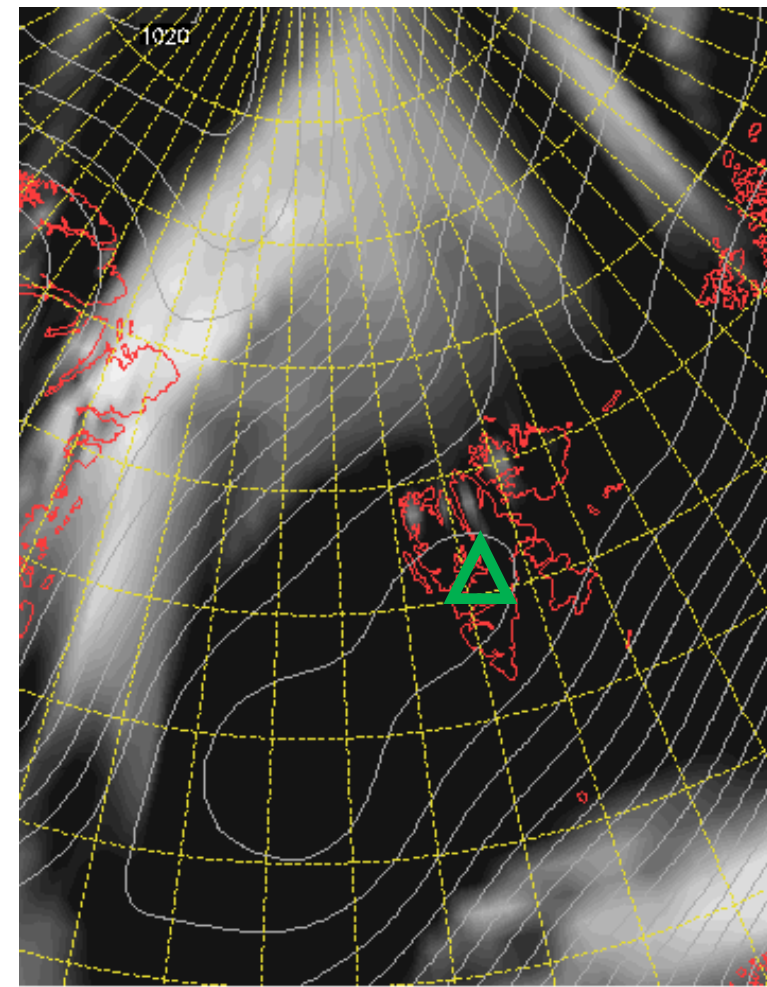
L



M



H

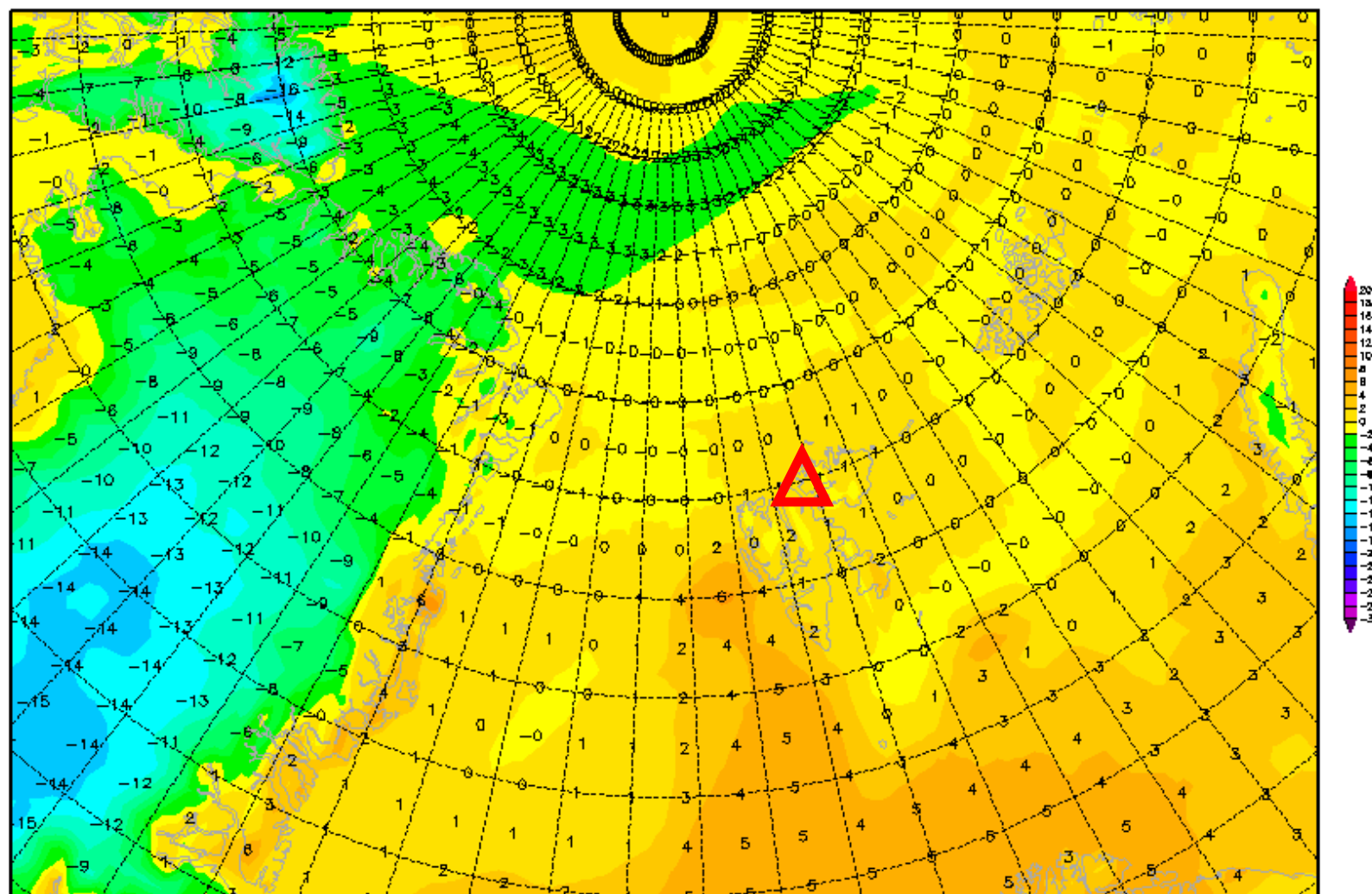


2-m temperature 4 June 2017 @ 12 UTC

Init : Thu,01JUN2017 00Z

Valid: Sun,04JUN2017 12Z

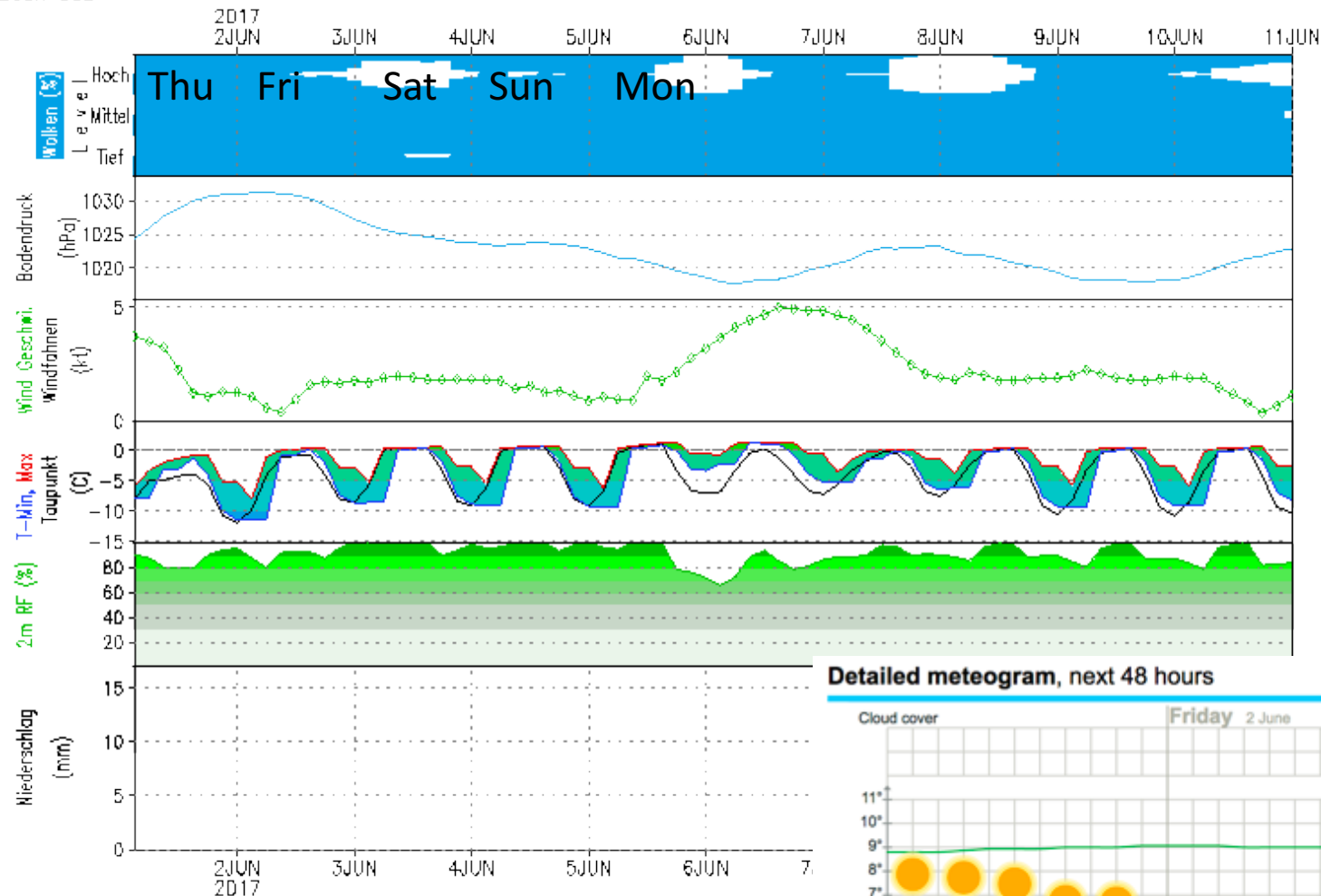
2m Temperatur (°C)



GFS — Meteogramm

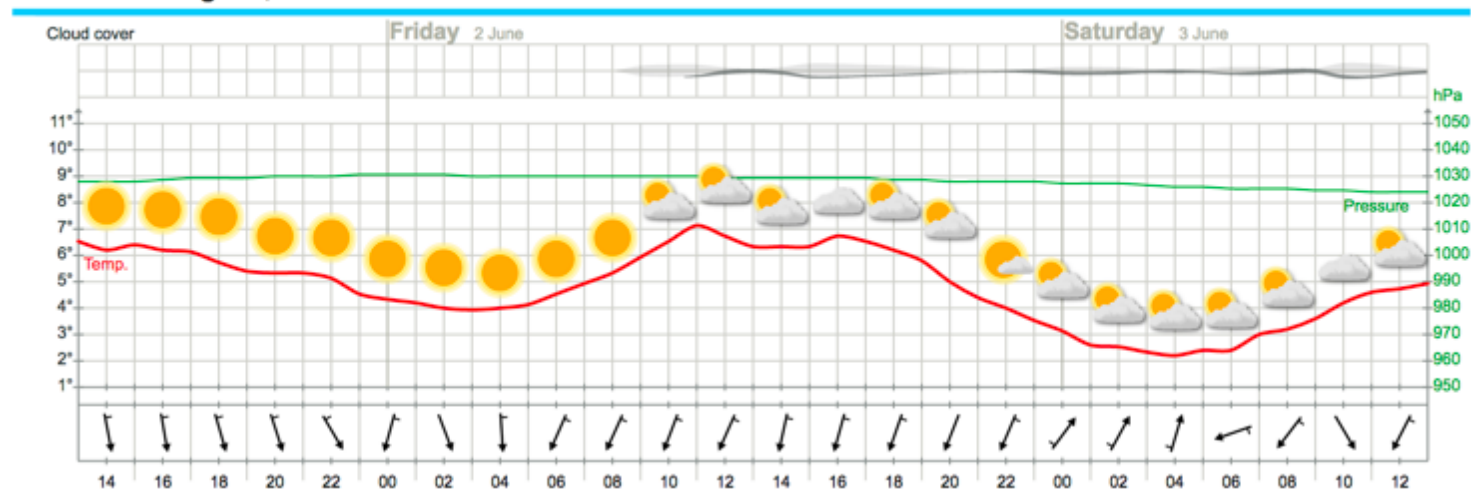
Lon: 15.63 Lat: 78.22 Hgt: 331m

Lauf: 00Z



Heute kein Sonnenaufgang
Heute kein Sonnenuntergang

Detailed meteogram, next 48 hours



Outlook – Meteogram

YR.no

Precip. Water 01 June 2017

GFS 0.25°x0.25°
Daily Average

Precipitable Water
Thursday, Jun 01, 2017

