

# Weather briefing

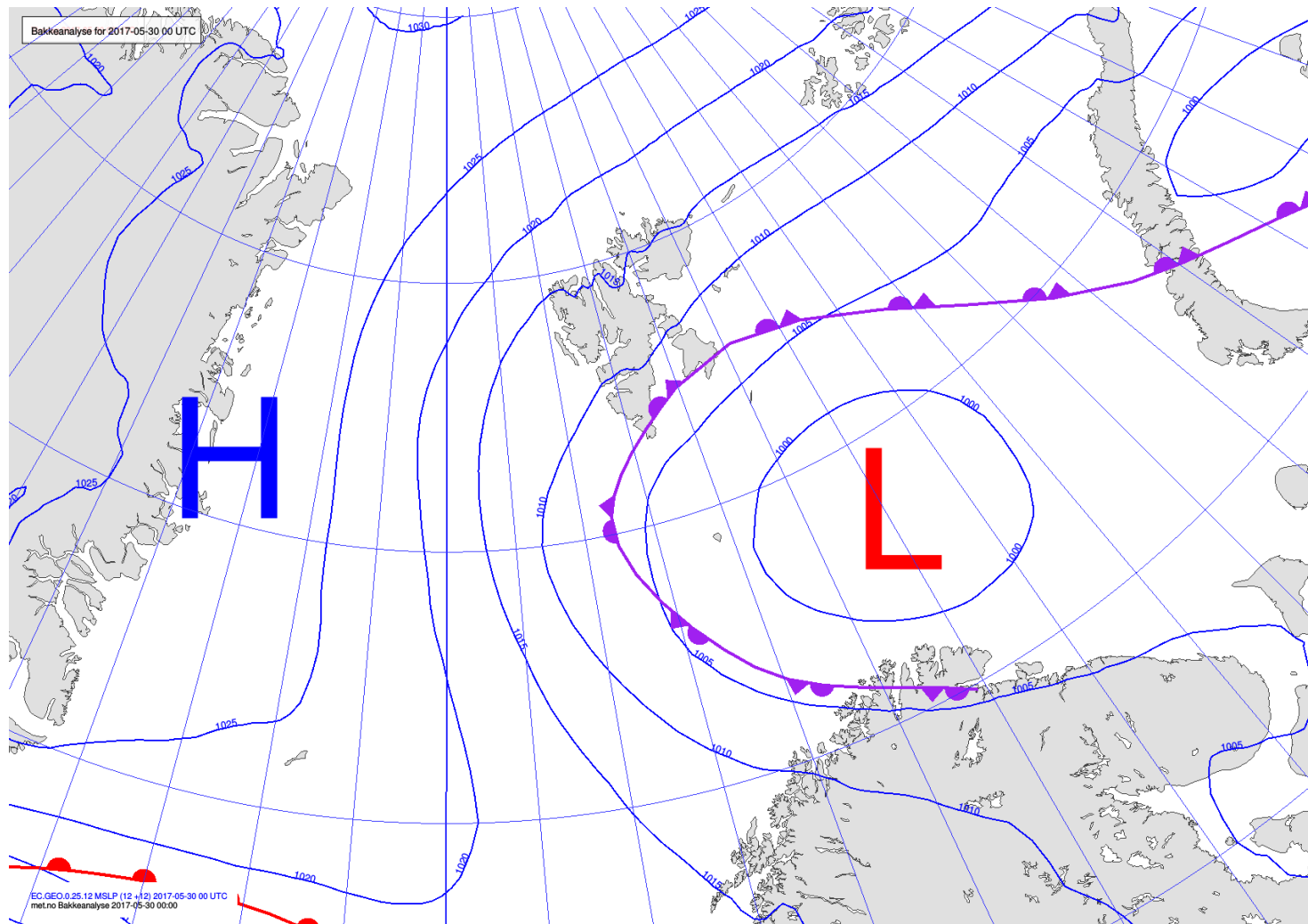
ACLOUD Longyearbyen, Svalbard

Tue 30 May 2017 – **Wed 31 May** – Fri 2 June 2017

## Summary

A low in the Barents Sea directs a northeasterly windflow over Svalbard area. Snow in north and east areas, in central regions cloudy or partly cloudy and mainly dry, clear conditions to the west. Low clouds overlain with few cirrus at today's position of RV Polarstern (approx. 76°N / 8°E).

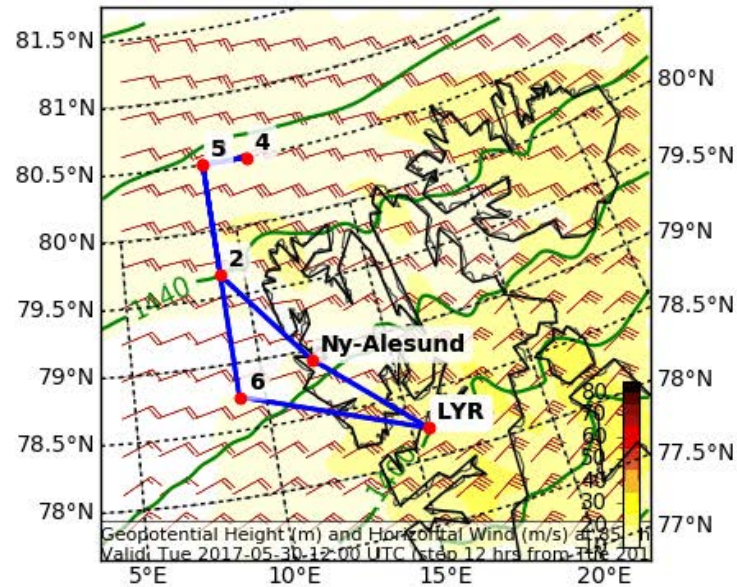
# Analysis 30 May 2017 @ 12 UTC



# Wind

## Today 12 UTC

Geopotential Height (m) and Horizontal Wind (m/s) (Wind Speed 10-85 m/s) at 8  
Valid: Tue 2017-05-30 12:00 UTC (step 12 hrs from Tue 2017-05-30 00:00 UTC)



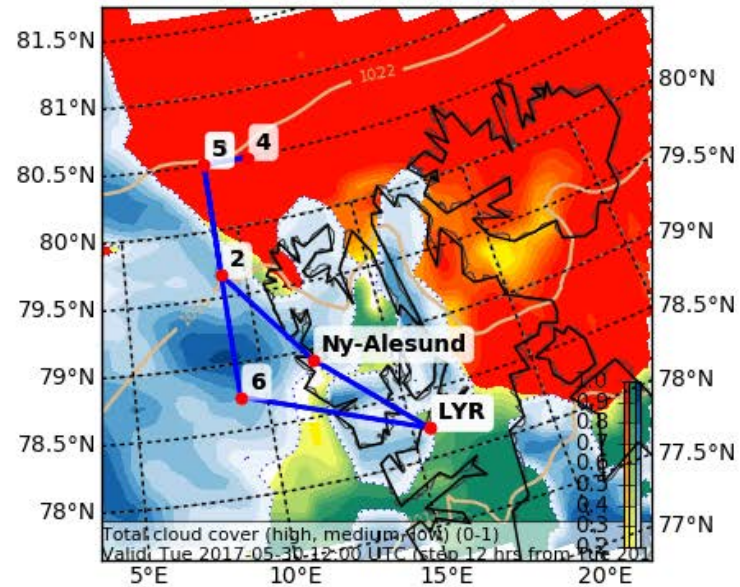
EPSG:77790000

# Clouds

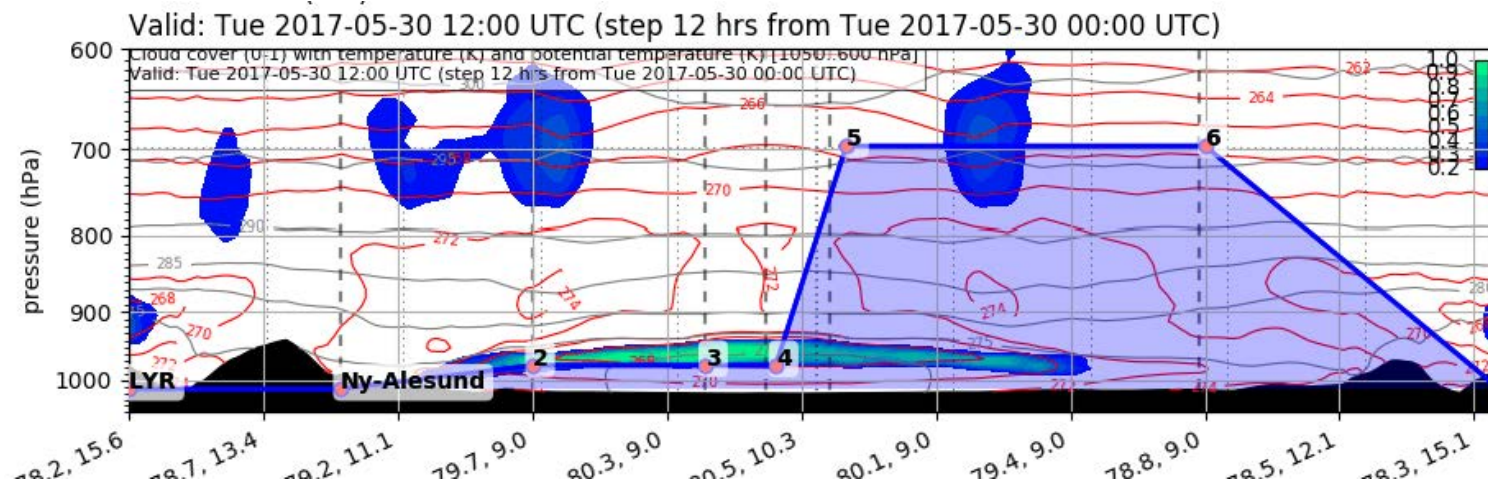
## Today 12 UTC

Cloud Cover (0-1) (Total Cloud Cover)

Valid: Tue 2017-05-30 12:00 UTC (step 12 hrs from Tue 2017-05-30 00:00 UTC)

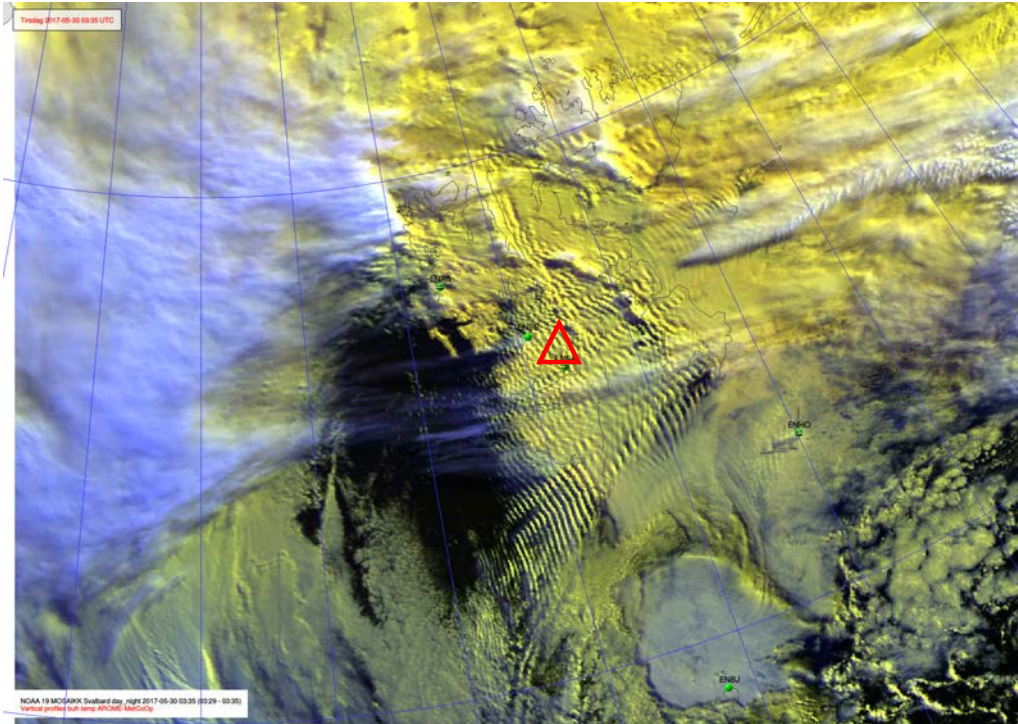


EPSG:77790000

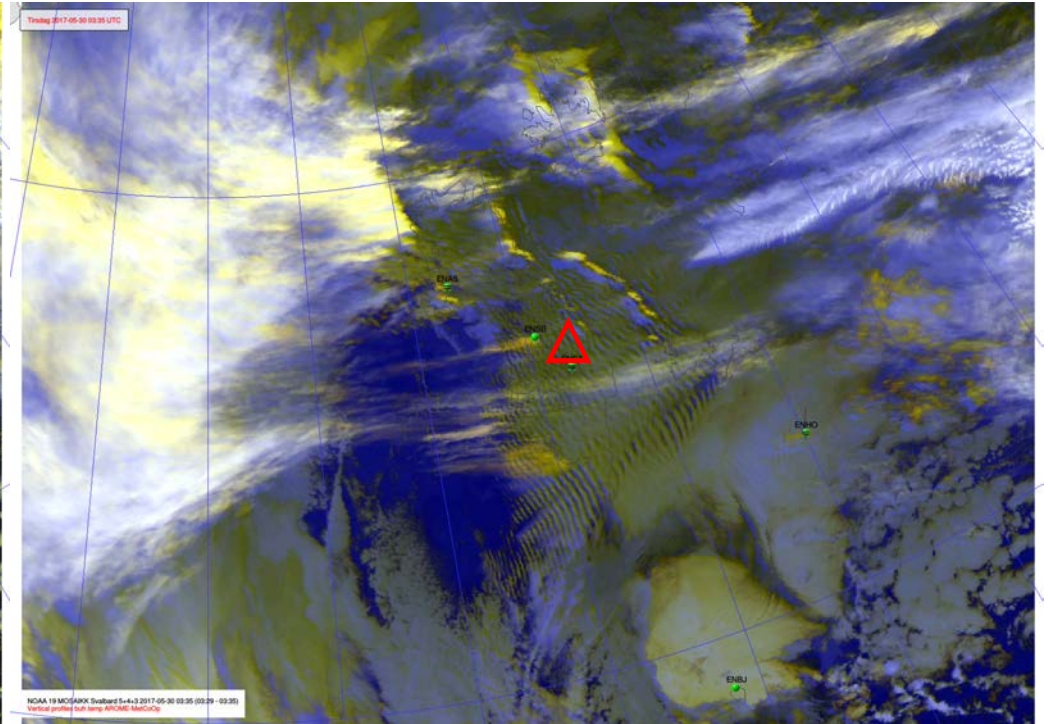




# NOAA-19 30 May 2017 @ 0335 UTC

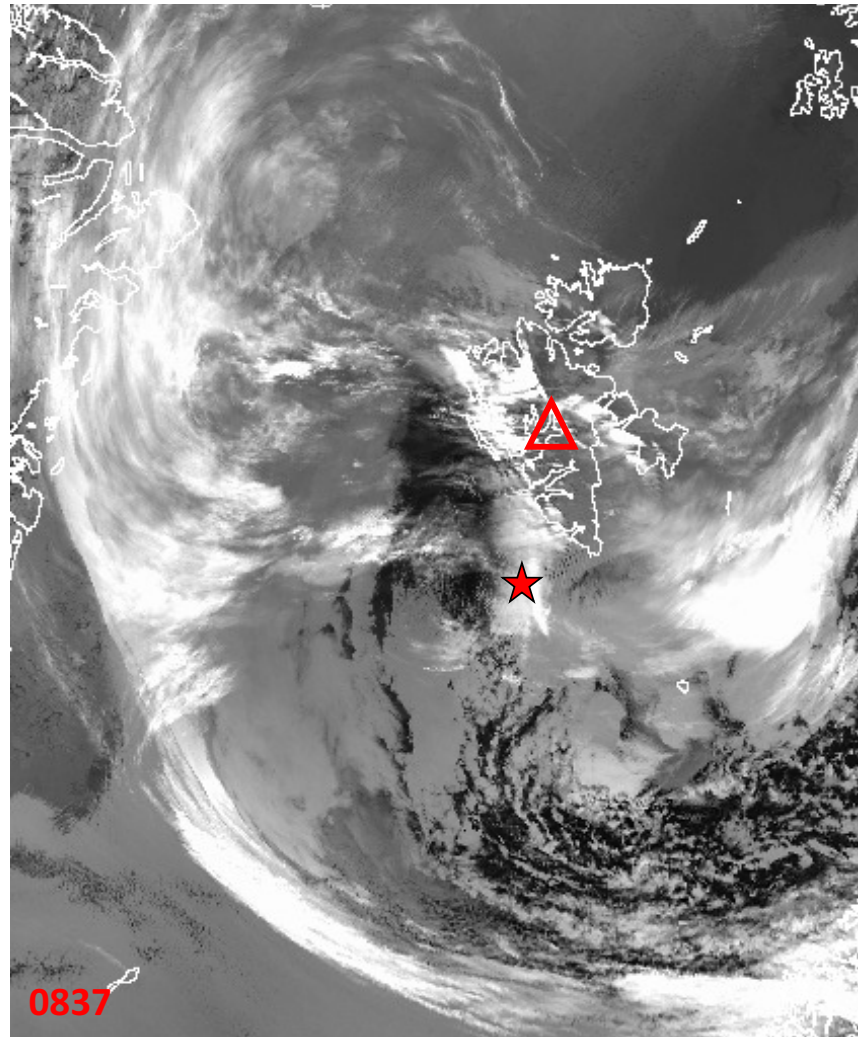


10.8  $\mu\text{m}$



IR, Ch 5+4+3

# NOAA-19 30 May 2017 @ 0837 UTC



★ RV Polarstern (76°N/8°E)

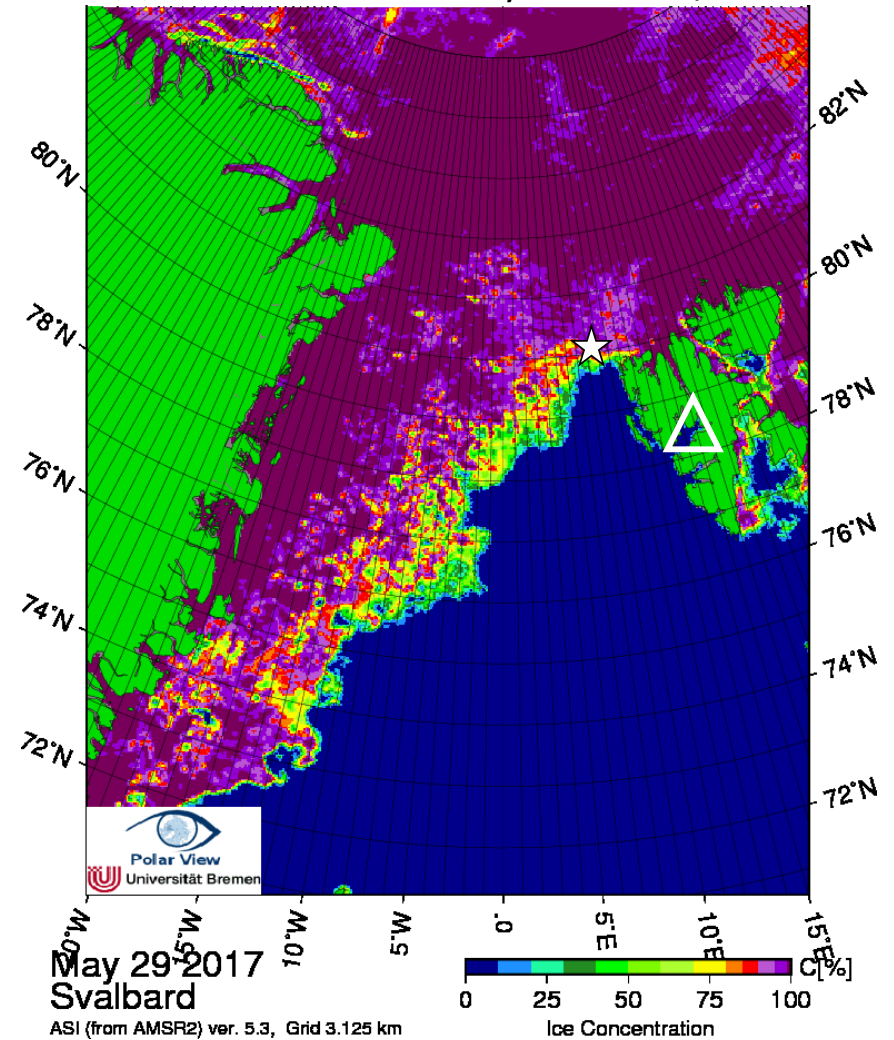
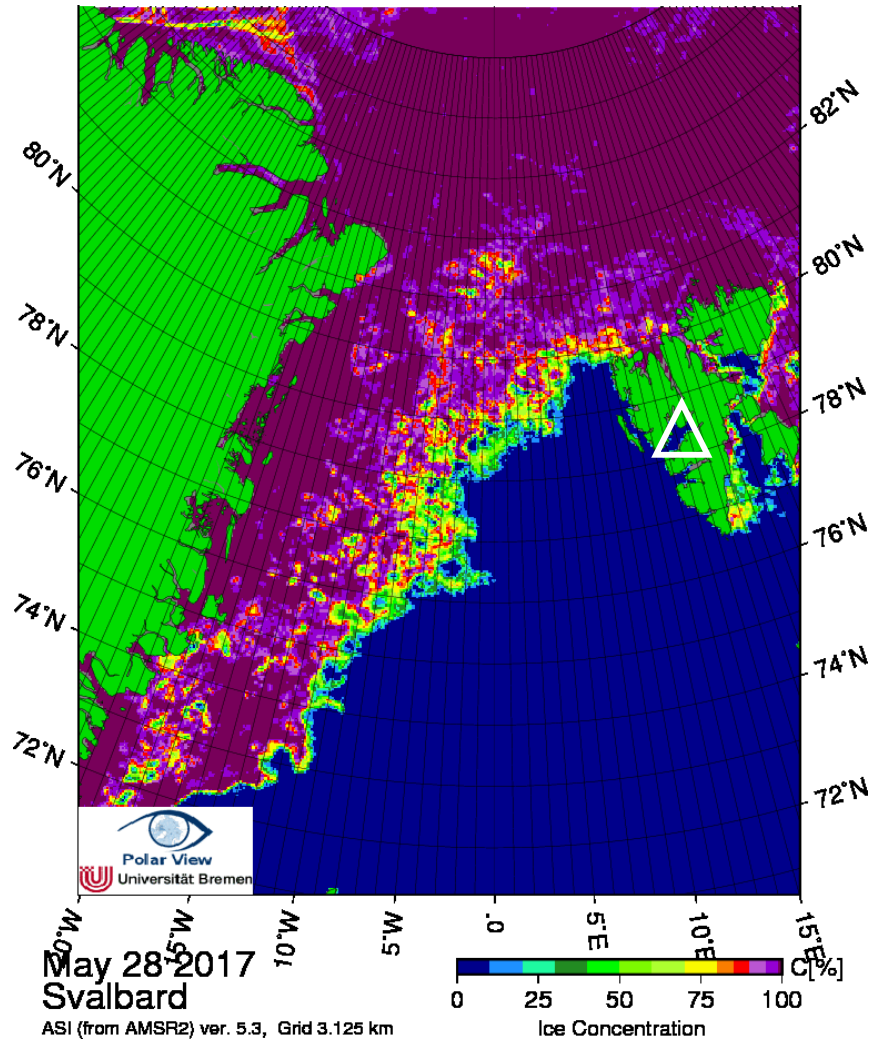
0837

10.8 μm



# Arctic sea ice 28 & 29 May 2017

☆ RV Polarstern 31 May 80°01.5'N/8°08.7'E

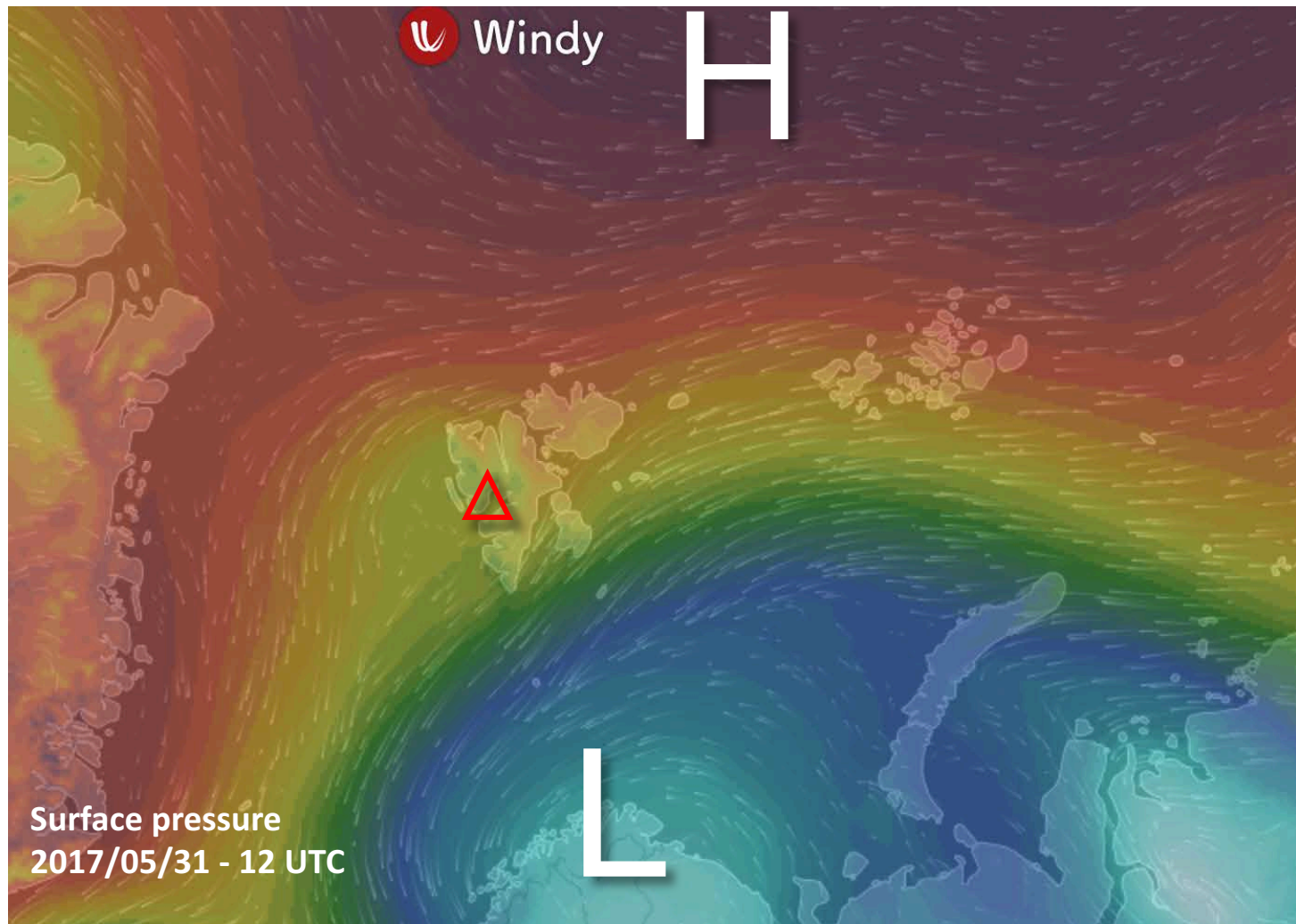




# Flight Day

**Wed 31 May 2017**

## General Situation Wed 31 May 2017

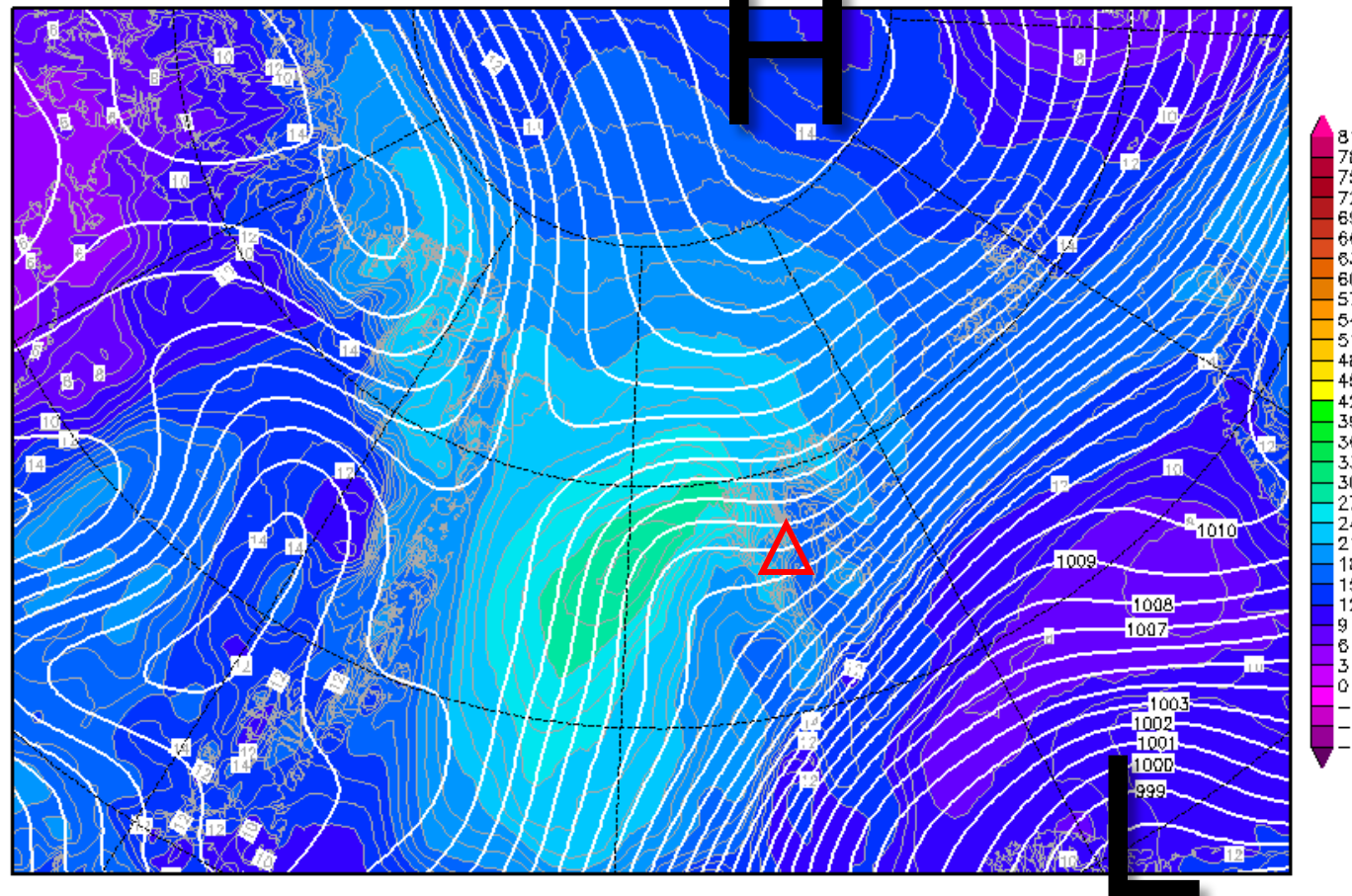


# 850-hPa Theta Equiv. 31 May 2017 @ 12 UTC

Init : Tue,30MAY2017 00Z

Valid: Wed,31MAY2017 12Z

*Bodendruck (hPa) und 850 hPa Aeq.Pot.T. (Grad C)*

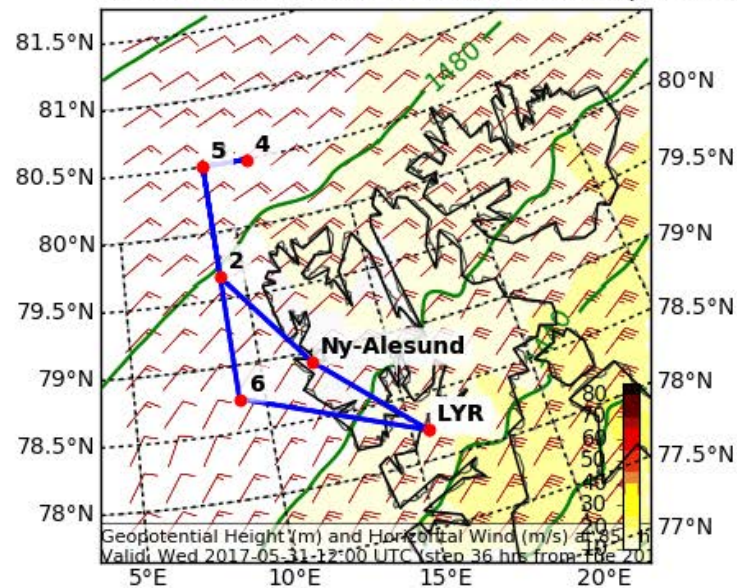


Daten: GFS-Modell des amerikanischen Wetterdienstes  
(C) Wetterzentrale  
[www.wetterzentrale.de](http://www.wetterzentrale.de)

# Wind

## Tomorrow 12 UTC

Geopotential Height (m) and Horizontal Wind (m/s) (Wind Speed 10-85 m/s) at 8  
Valid: Wed 2017-05-31 12:00 UTC (step 36 hrs from Tue 2017-05-30 00:00 UTC)



EPSG:77790000

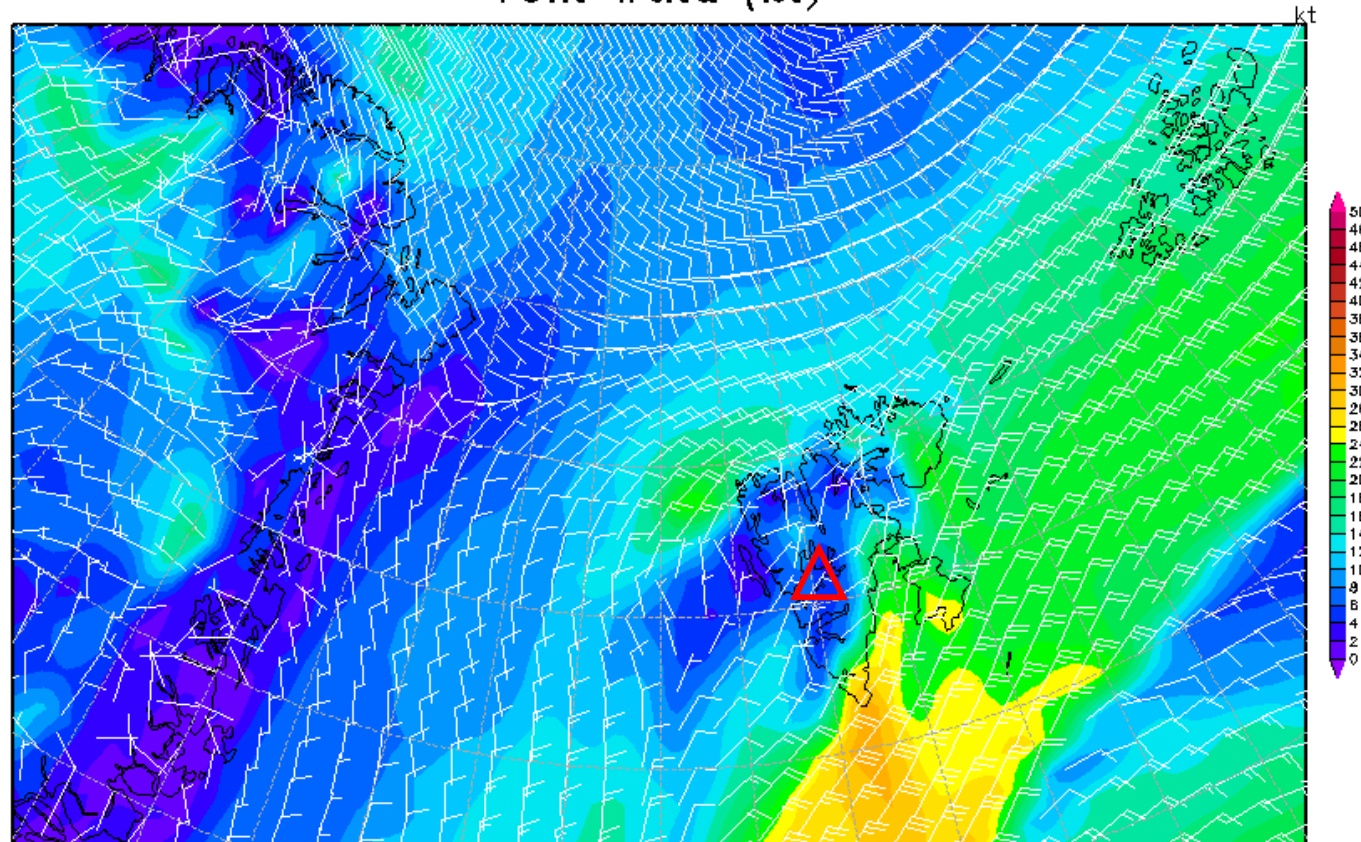


# 10-m Wind 31 May 2017 @ 12 UTC

Init : Tue,30MAY2017 00Z

Valid: Wed,31MAY2017 12Z

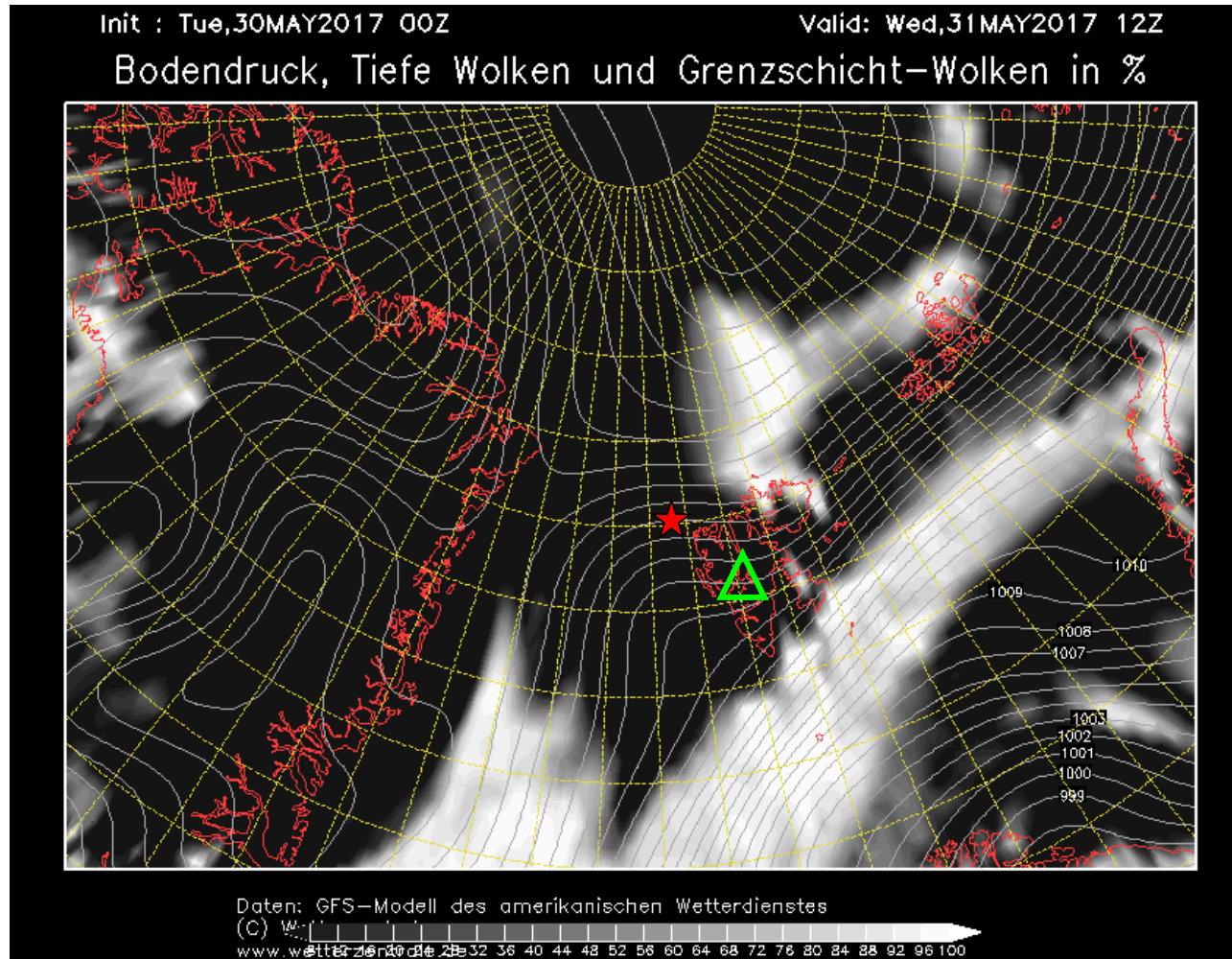
10m Wind (kt)



Daten: GFS-Modell des amerikanischen Wetterdienstes  
(C) Wetterzentrale  
[www.wetterzentrale.de](http://www.wetterzentrale.de)

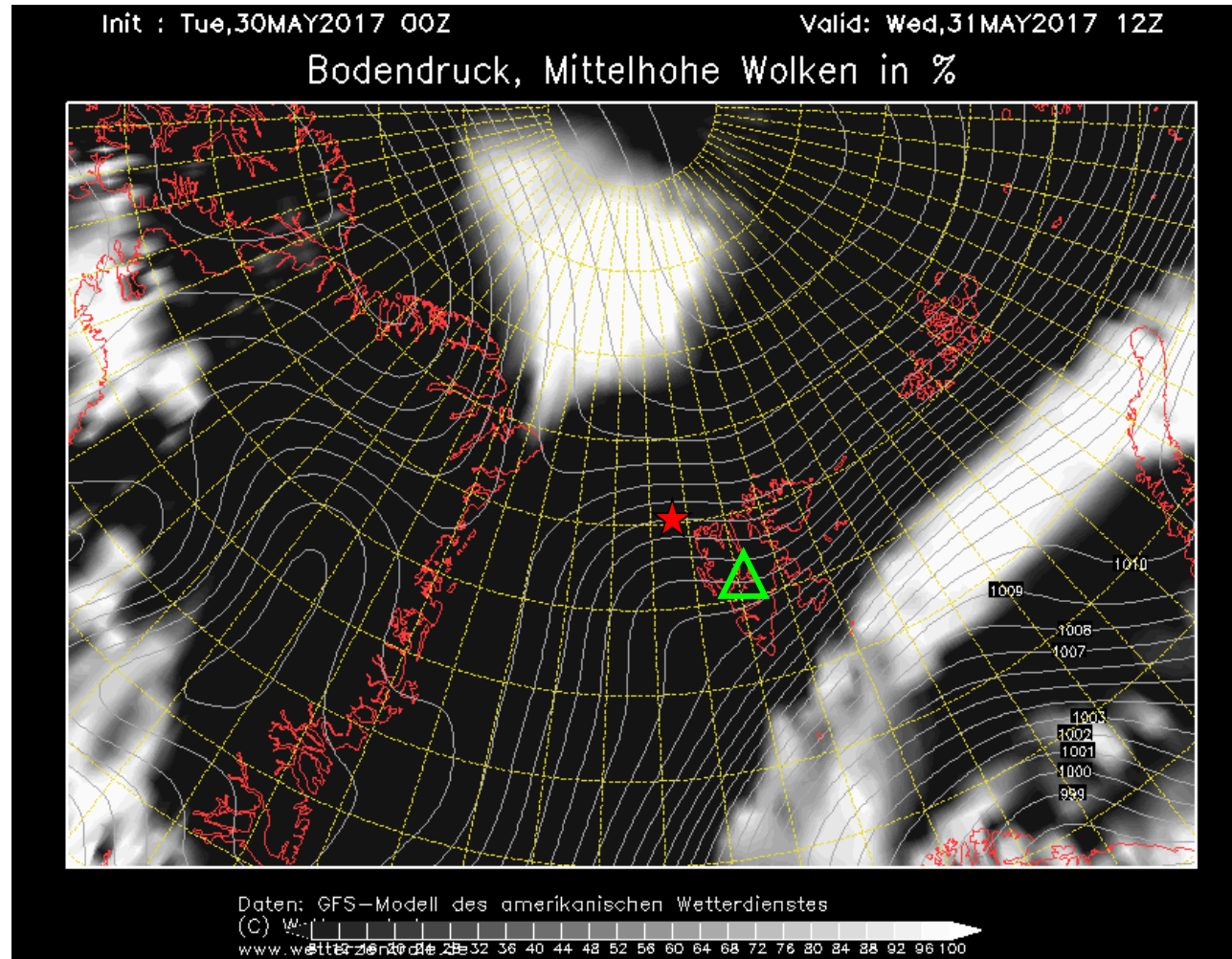
# Low-level cloud cover 31 May 2017 @ 12 UTC

★ RV Polarstern (80° 01.5' N / 9° 08.7'E)



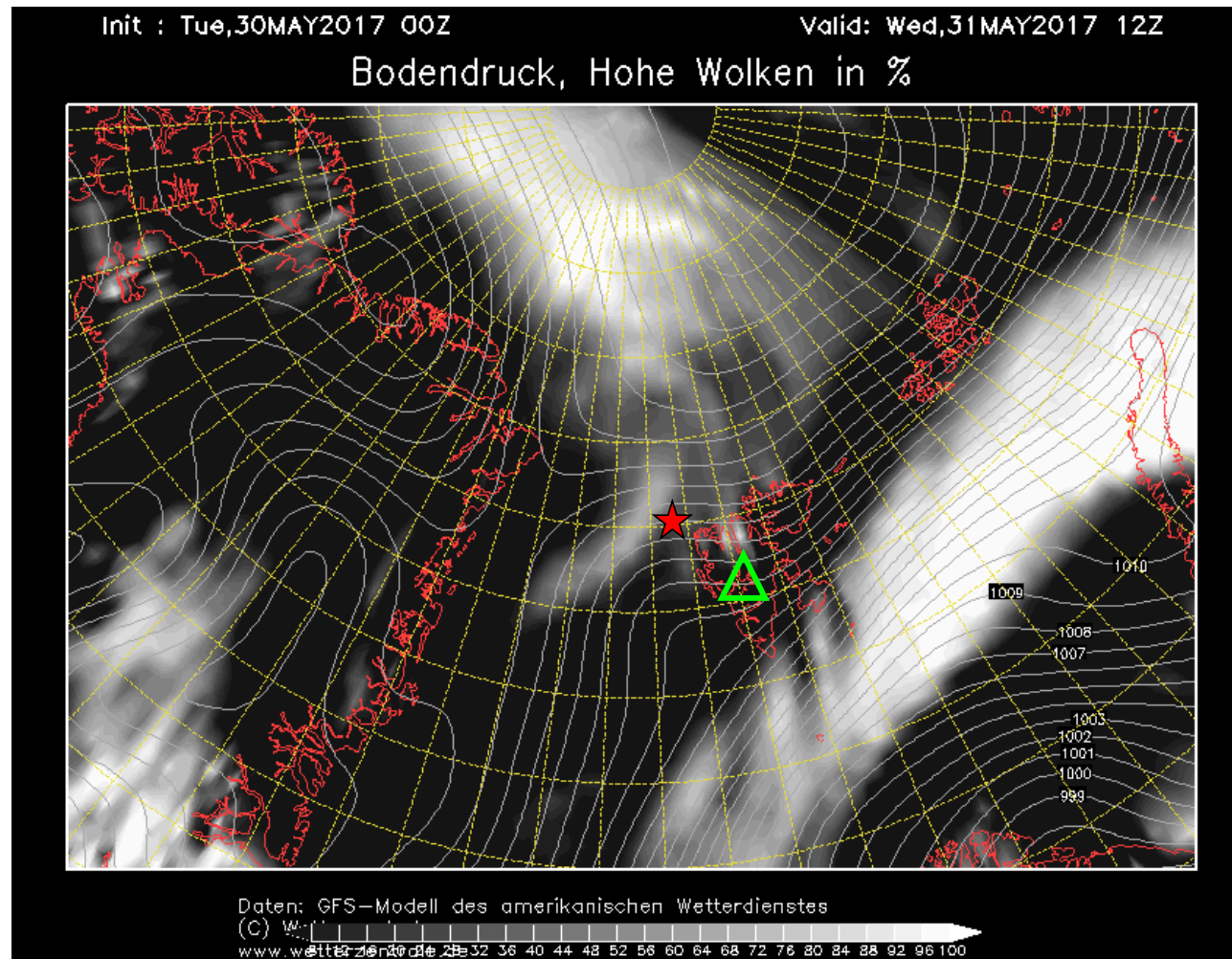
# Mid-level cloud cover 31 May 2017 @ 12 UTC

★ RV Polarstern (80° 01.5' N / 9° 08.7'E)



# High-level cloud cover 31 May 2017 @ 12 UTC

★ RV Polarstern (80° 01.5' N / 9° 08.7'E)

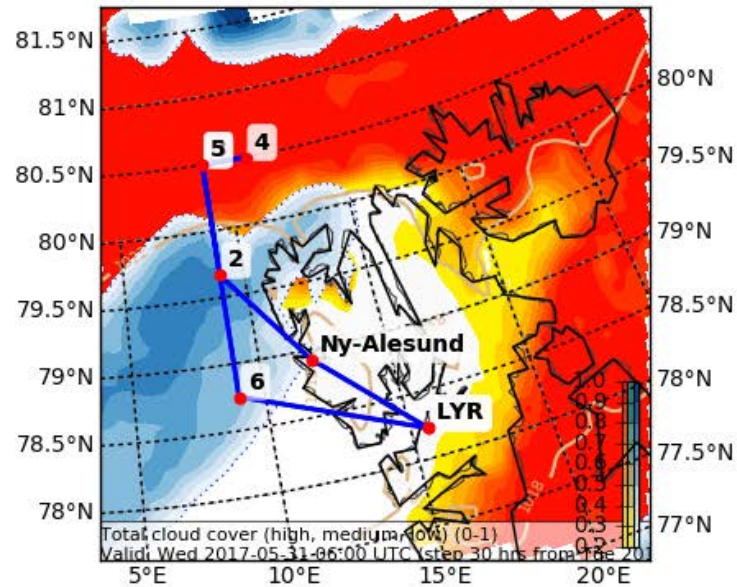




# Forecast Tomorrow 06 UTC

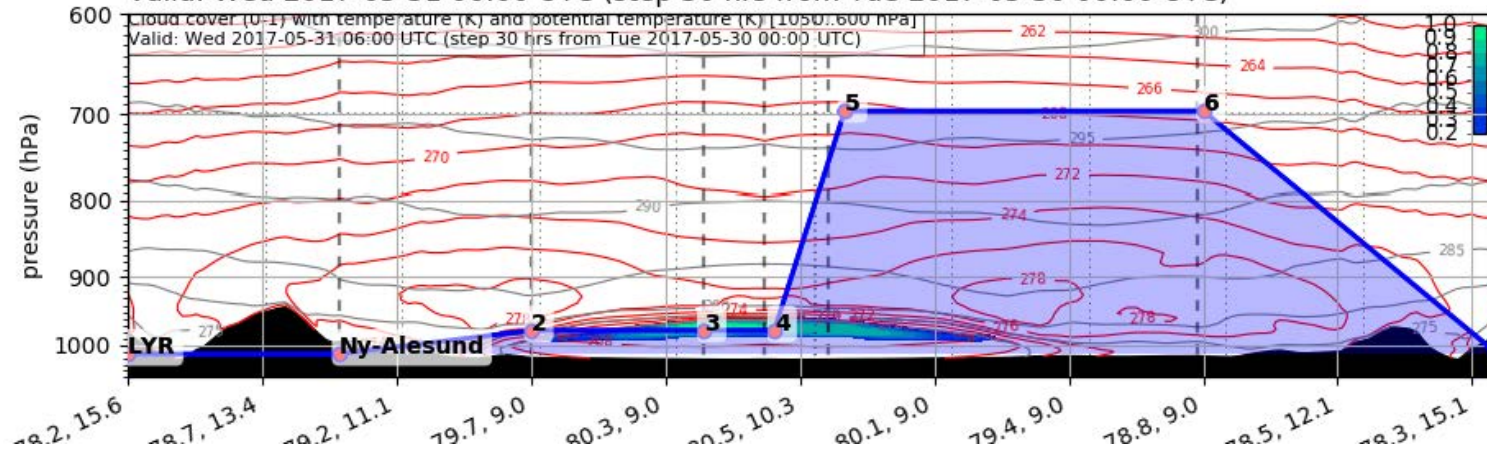
Cloud Cover (0-1) (Total Cloud Cover)

Valid: Wed 2017-05-31 06:00 UTC (step 30 hrs from Tue 2017-05-30 00:00 UTC)



EPSG:77790000

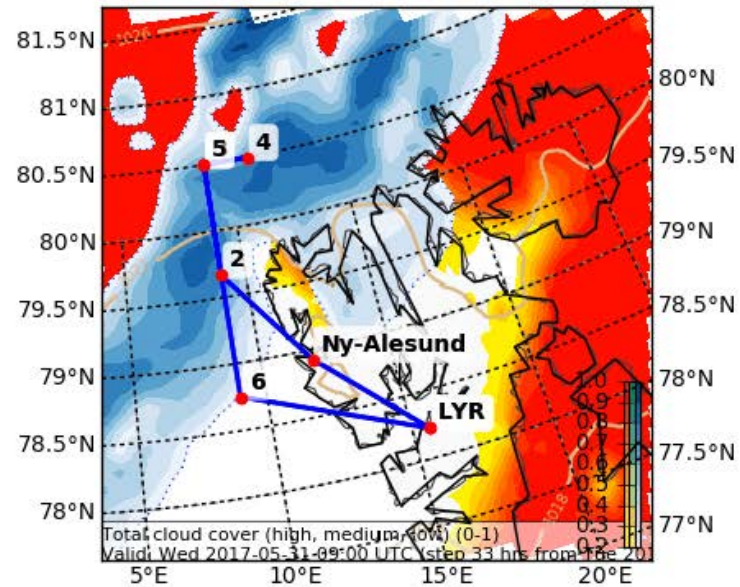
Valid: Wed 2017-05-31 06:00 UTC (step 30 hrs from Tue 2017-05-30 00:00 UTC)



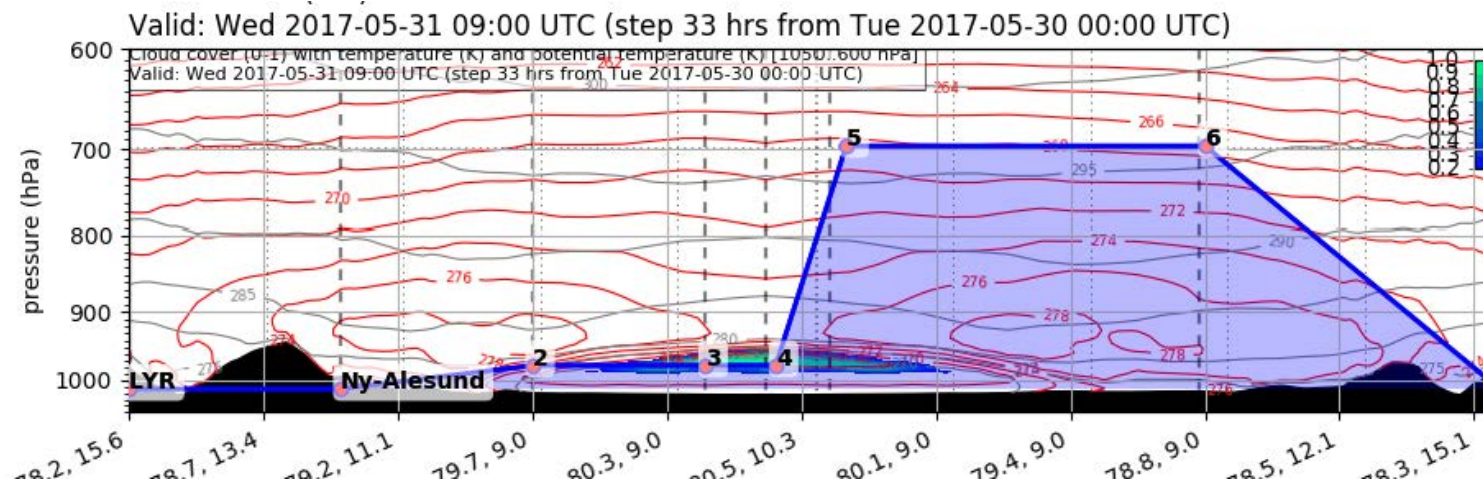
# Forecast Tomorrow 09 UTC

Cloud Cover (0-1) (Total Cloud Cover)

Valid: Wed 2017-05-31 09:00 UTC (step 33 hrs from Tue 2017-05-30 00:00 UTC)



EPSG:77790000

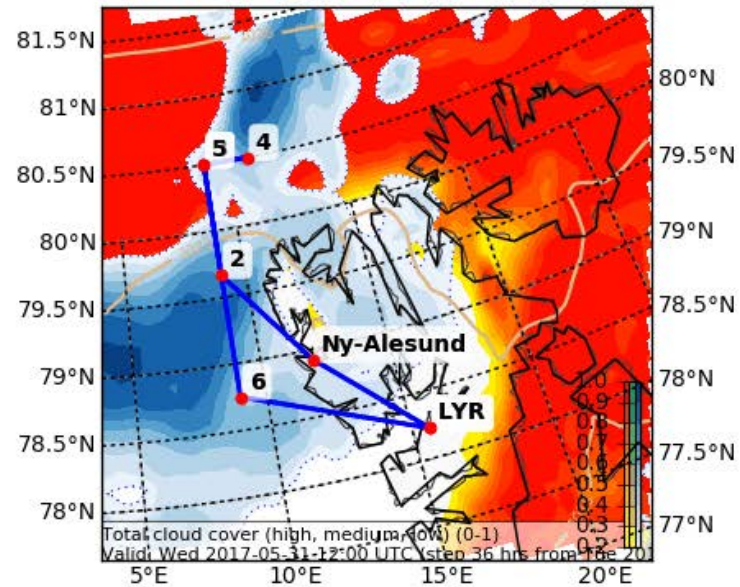




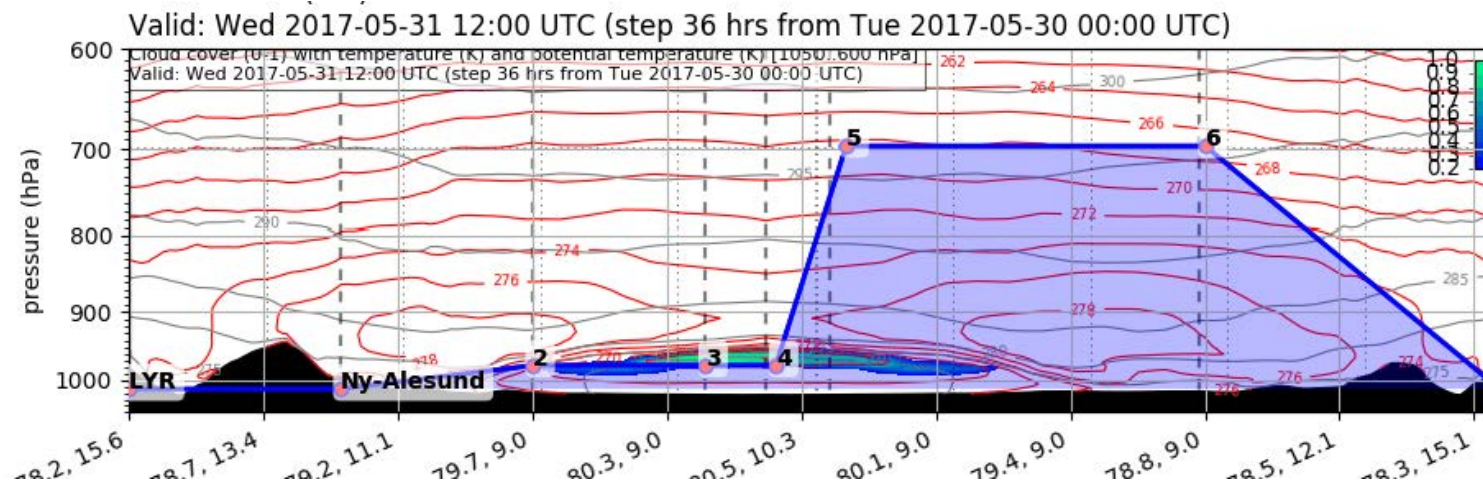
# Forecast Tomorrow 12 UTC

Cloud Cover (0-1) (Total Cloud Cover)

Valid: Wed 2017-05-31 12:00 UTC (step 36 hrs from Tue 2017-05-30 00:00 UTC)



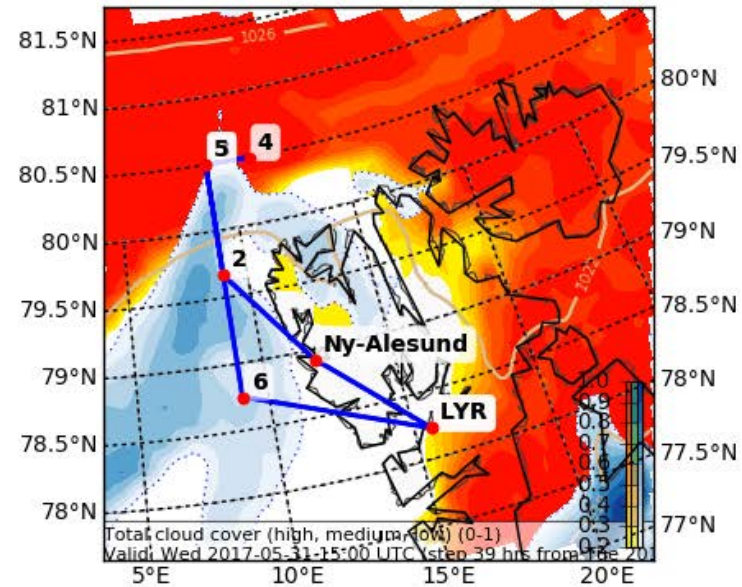
EPSG:77790000



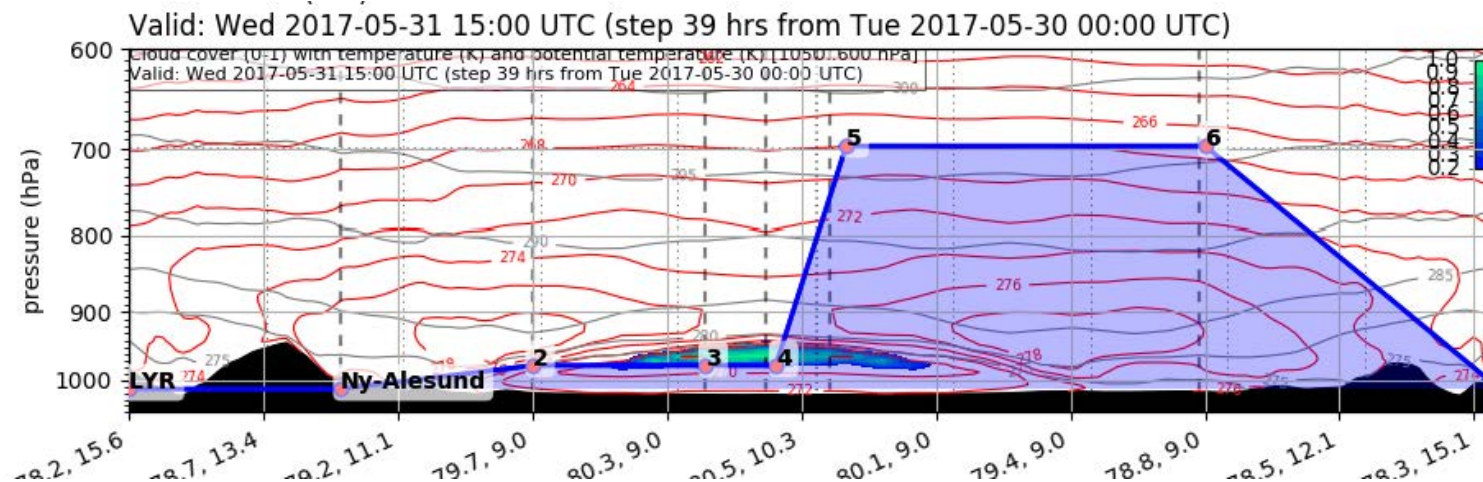
# Forecast Tomorrow 15 UTC

Cloud Cover (0-1) (Total Cloud Cover)

Valid: Wed 2017-05-31 15:00 UTC (step 39 hrs from Tue 2017-05-30 00:00 UTC)



EPSG:77790000

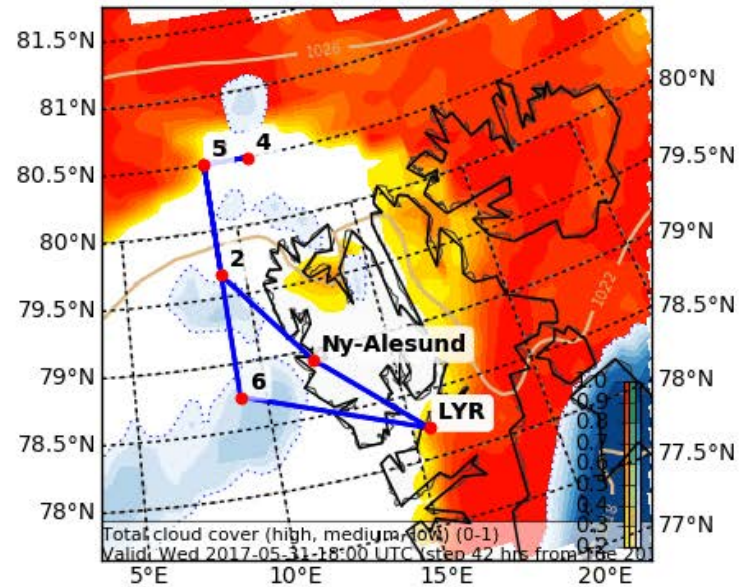




# Forecast Tomorrow 18 UTC

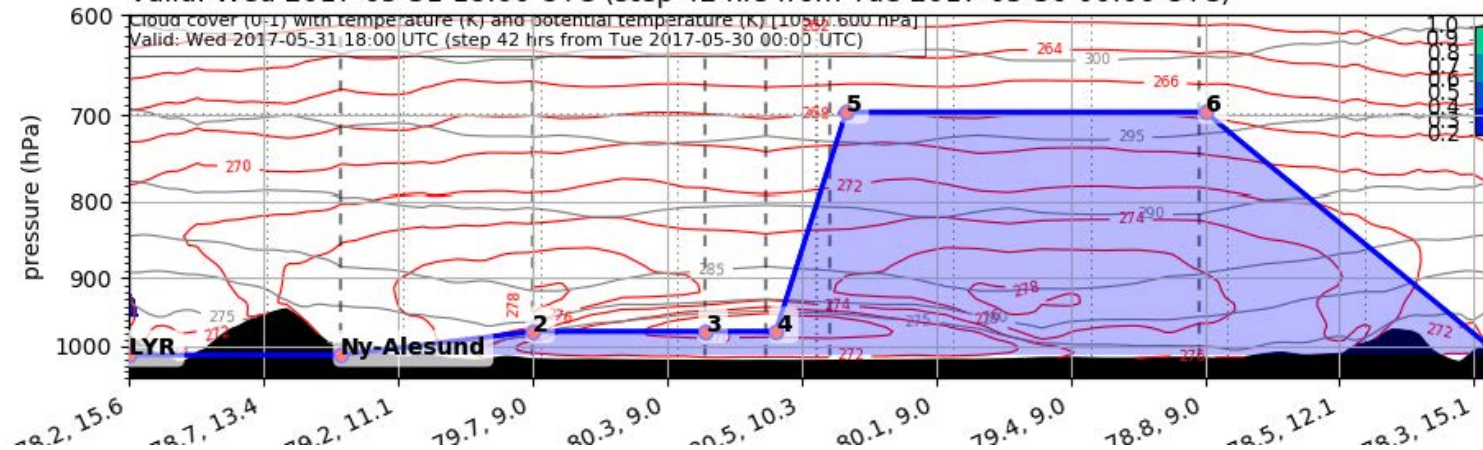
Cloud Cover (0-1) (Total Cloud Cover)

Valid: Wed 2017-05-31 18:00 UTC (step 42 hrs from Tue 2017-05-30 00:00 UTC)



EPSG:77790000

Valid: Wed 2017-05-31 18:00 UTC (step 42 hrs from Tue 2017-05-30 00:00 UTC)

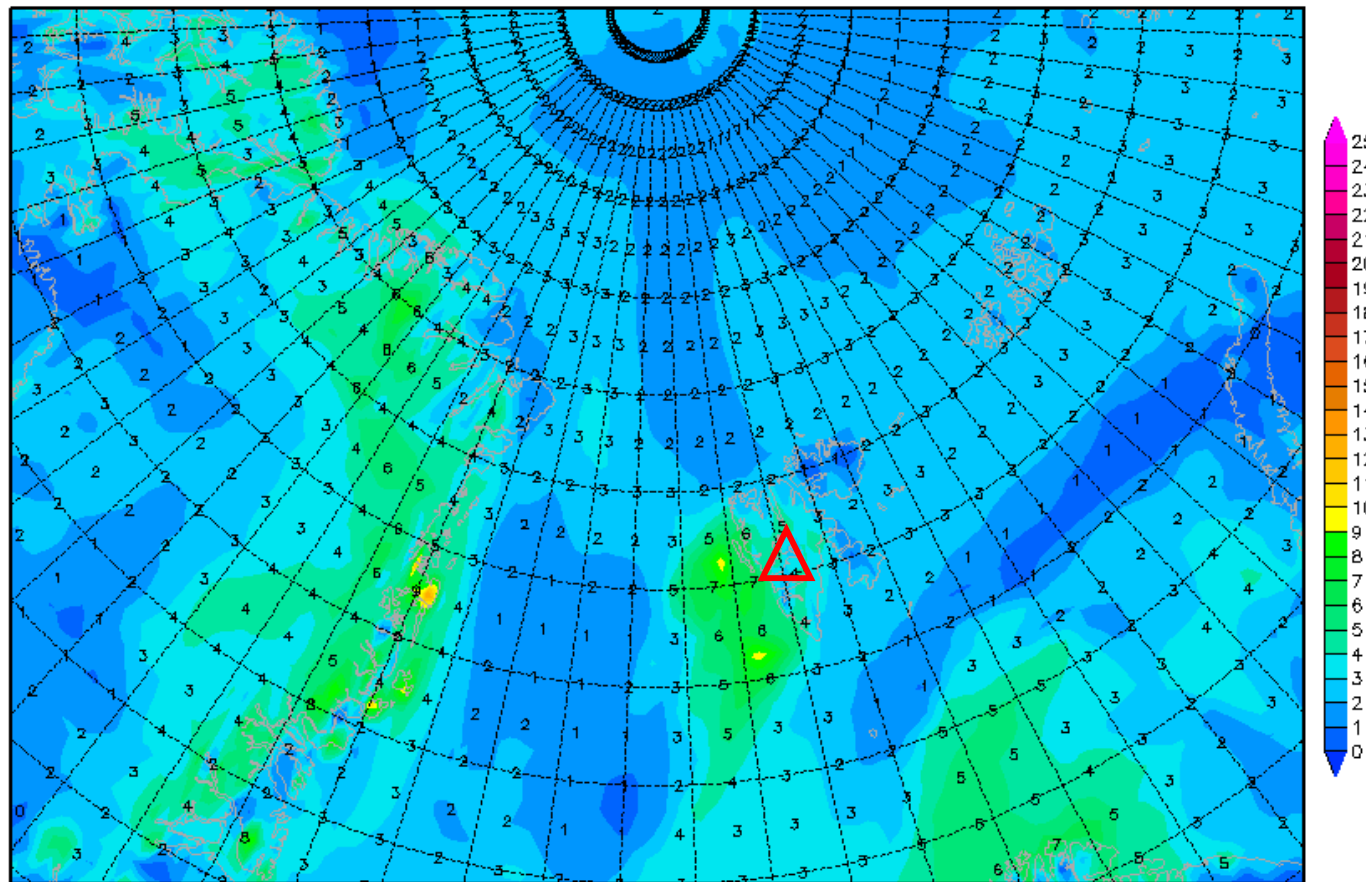


# 2-m dew point diff. 31 May 2017 @ 12 UTC

Init : Tue,30MAY2017 00Z

Valid: Wed,31MAY2017 12Z

*2m (Temperatur-Taupunkt)*



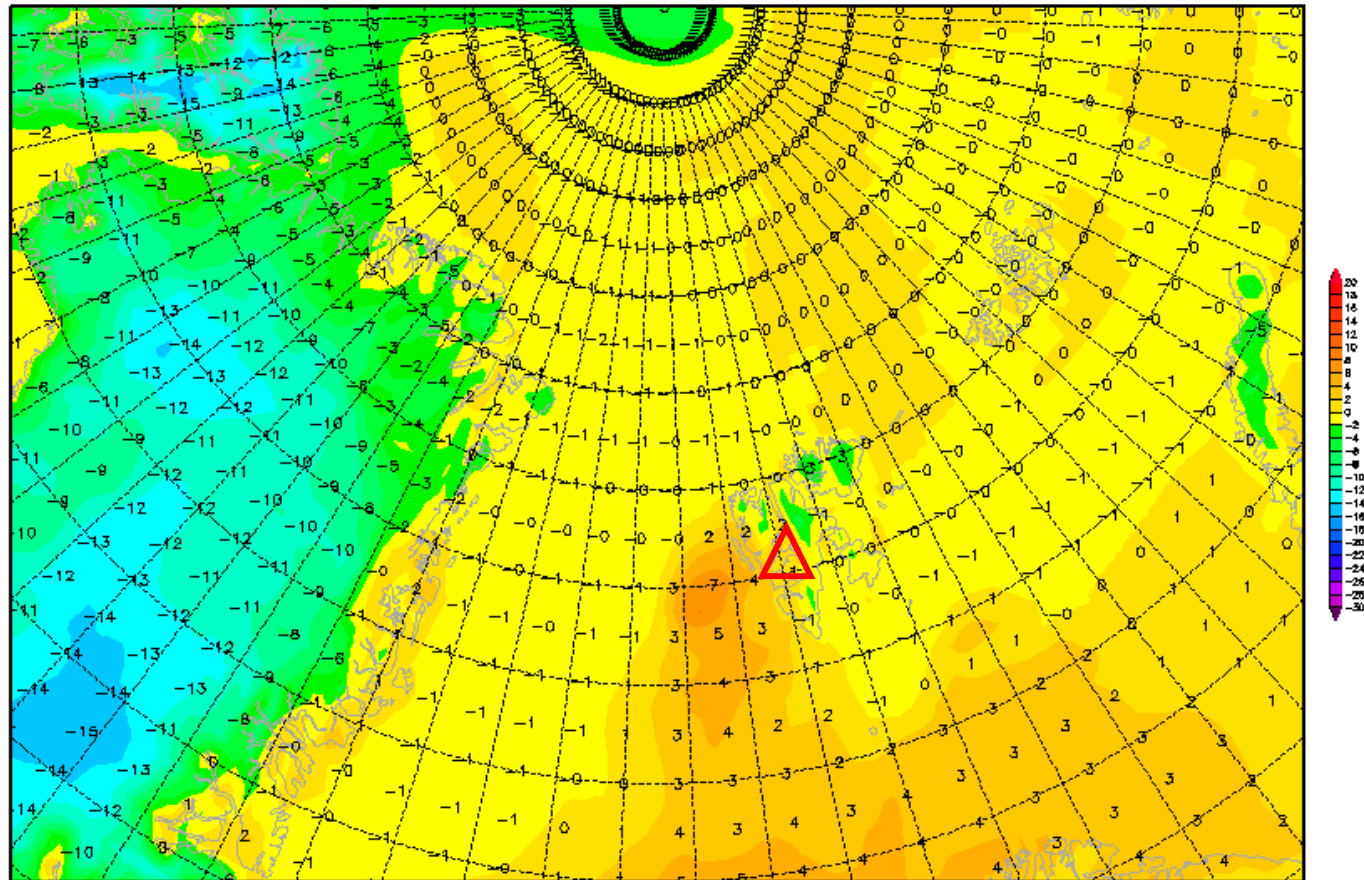
Daten: GFS  
(C) Wetterzentrale  
[www.wetterzentrale.de](http://www.wetterzentrale.de)

# 2-m temperature 31 May 2017 @ 12 UTC

Init : Tue,30MAY2017 00Z

Valid: Wed,31MAY2017 12Z

*2m Temperatur (°C)*

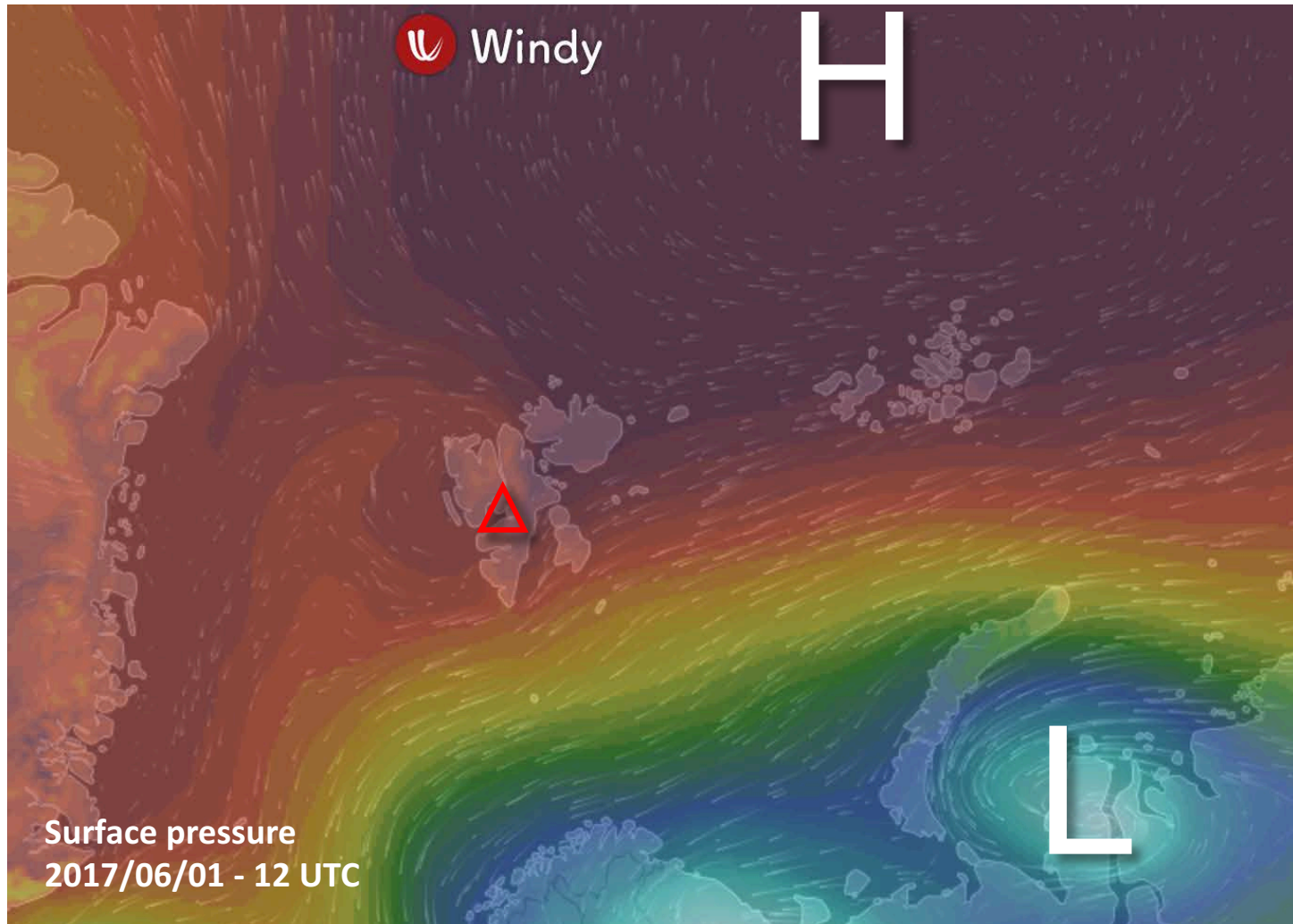


# Outlook

**Thu 1 June – Fri 2 June 2017**



## General Situation Thu 1 June 2017

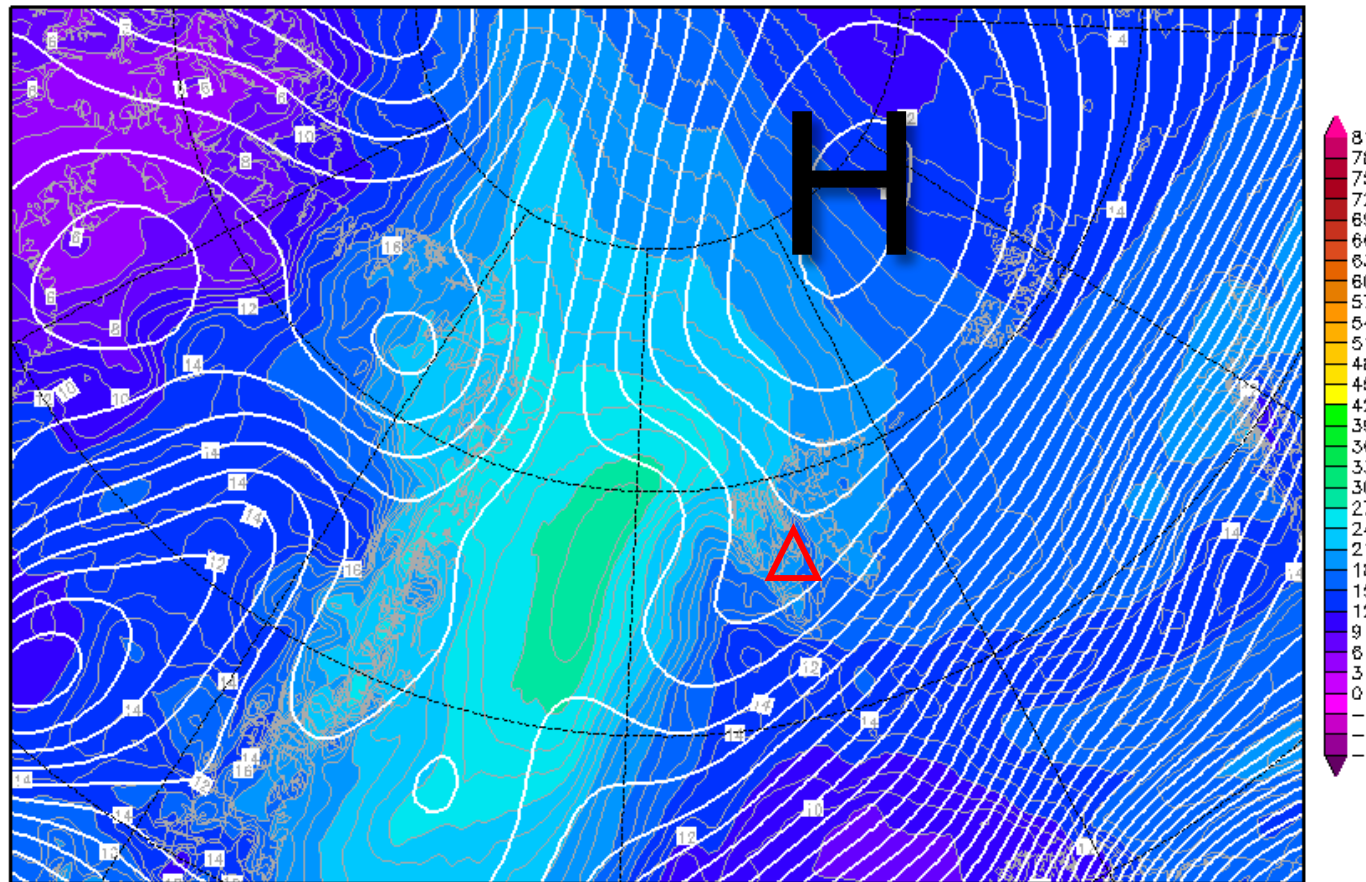


# 850-hPa Theta Equiv. 1 June 2017 @ 12 UTC

Init : Tue,30MAY2017 00Z

Valid: Thu,01JUN2017 12Z

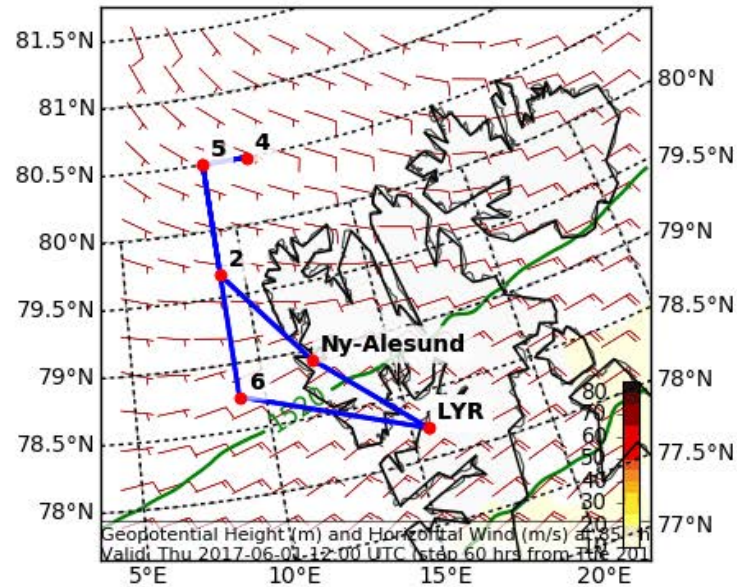
*Bodendruck (hPa) und 850 hPa Aeq.Pot.T. (Grad C)*



Daten: GFS-Modell des amerikanischen Wetterdienstes  
(C) Wetterzentrale  
[www.wetterzentrale.de](http://www.wetterzentrale.de)

# Wind, After Tomorrow 12 UTC

Geopotential Height (m) and Horizontal Wind (m/s) (Wind Speed 10-85 m/s) at 8  
Valid: Thu 2017-06-01 12:00 UTC (step 60 hrs from Tue 2017-05-30 00:00 UTC)

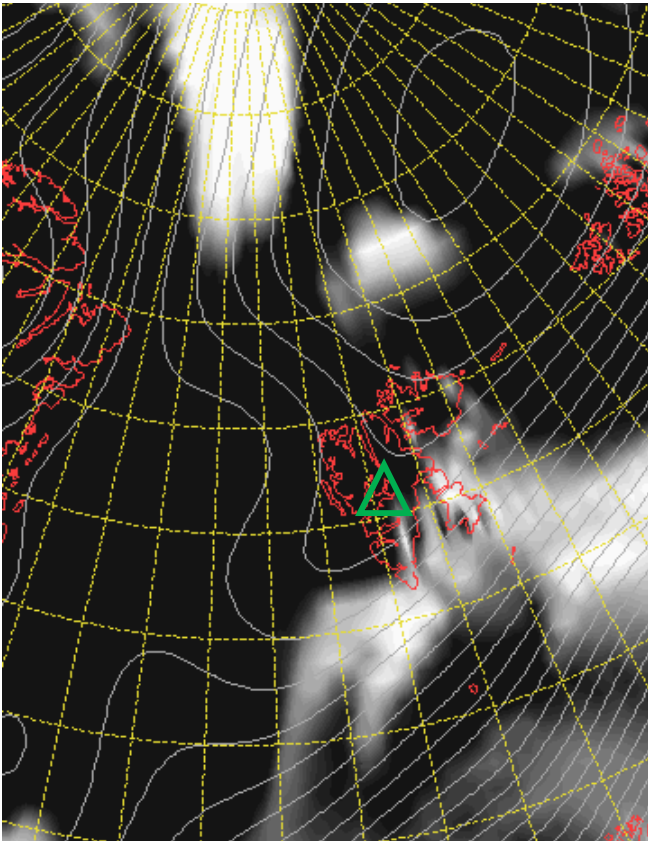


EPSG:77790000

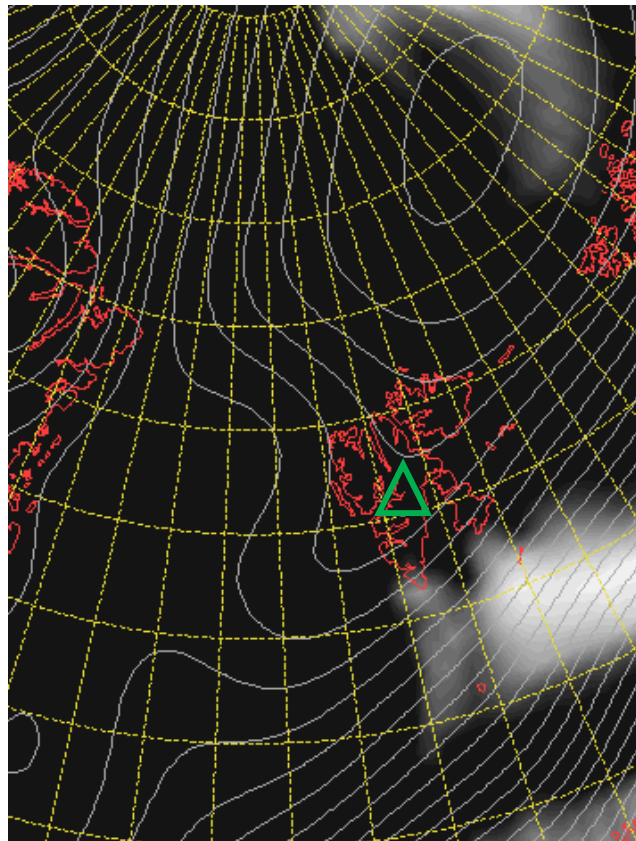


## Cloud Cover 1 June 2017 @ 12 UTC

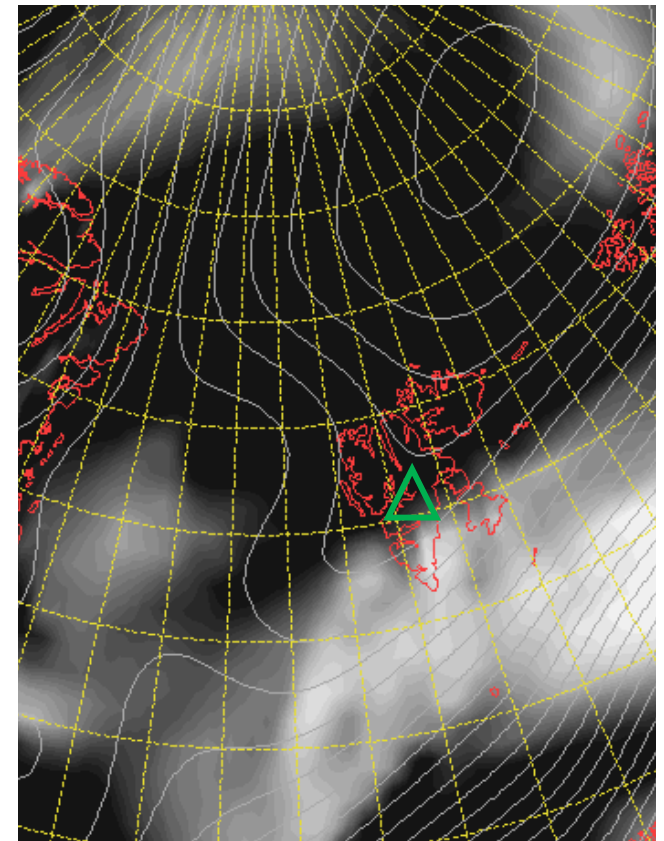
L



M



H

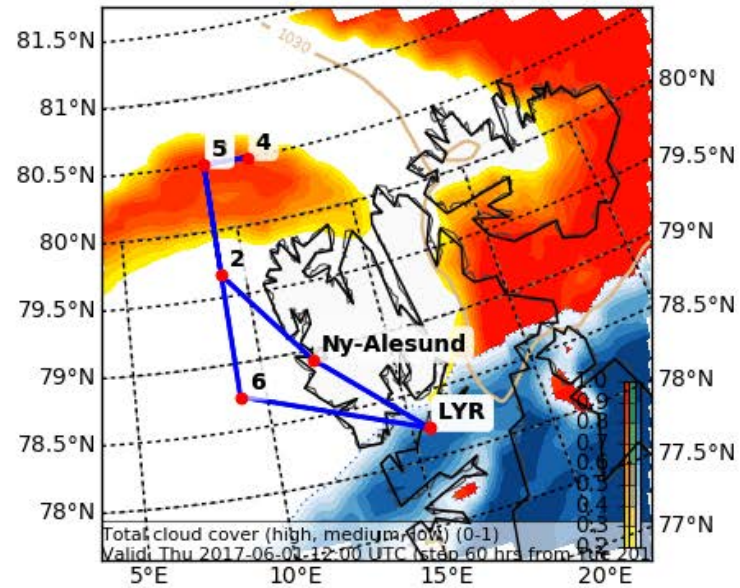




# Forecast After Tomorrow 12 UTC

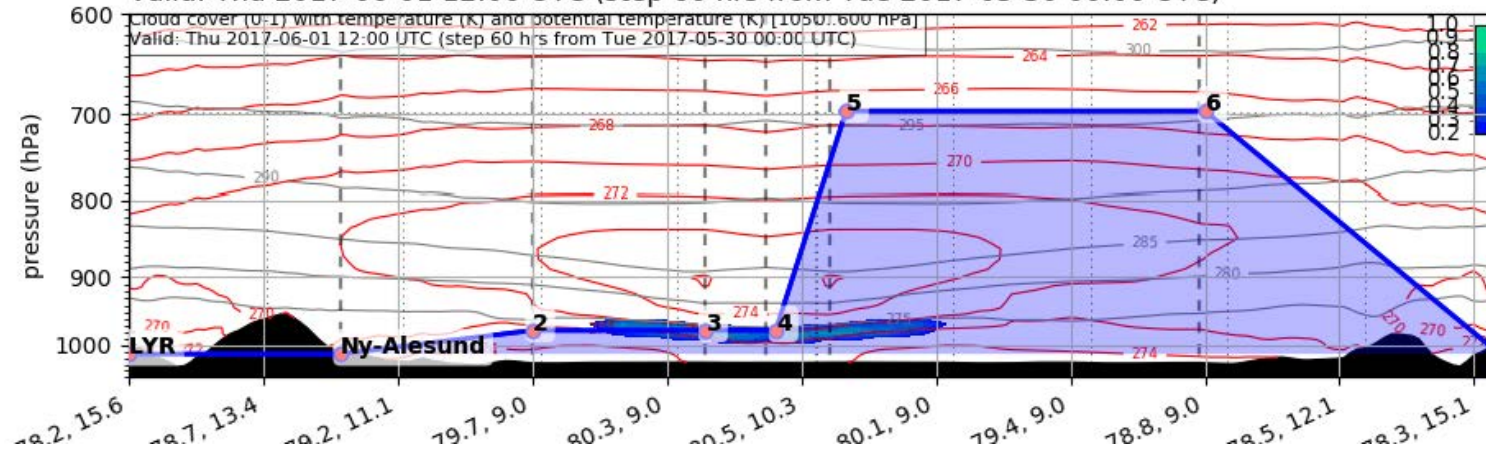
Cloud Cover (0-1) (Total Cloud Cover)

Valid: Thu 2017-06-01 12:00 UTC (step 60 hrs from Tue 2017-05-30 00:00 UTC)



EPSG:77790000

Valid: Thu 2017-06-01 12:00 UTC (step 60 hrs from Tue 2017-05-30 00:00 UTC)

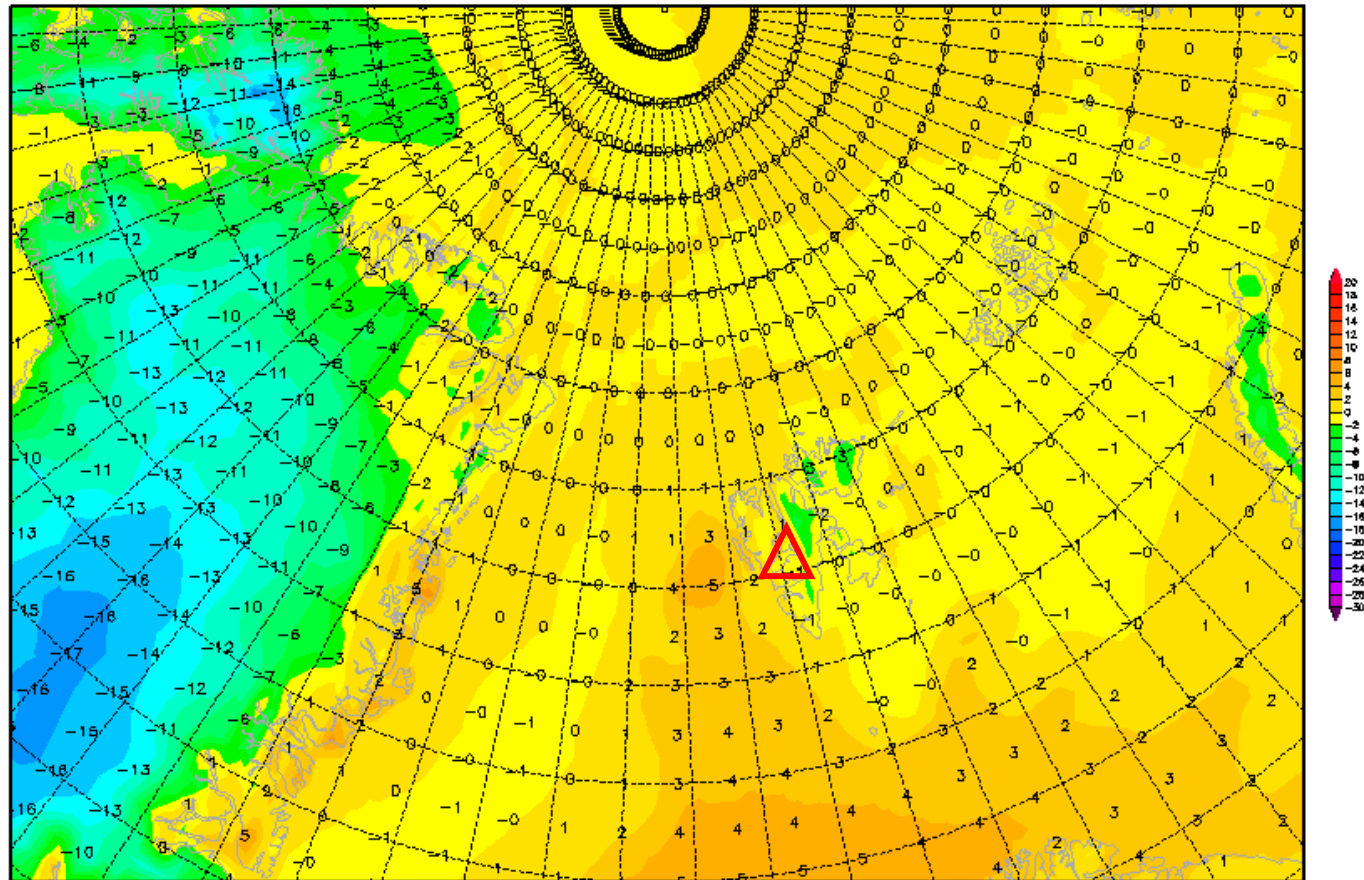


# 2-m temperature 1 June 2017 @ 12 UTC

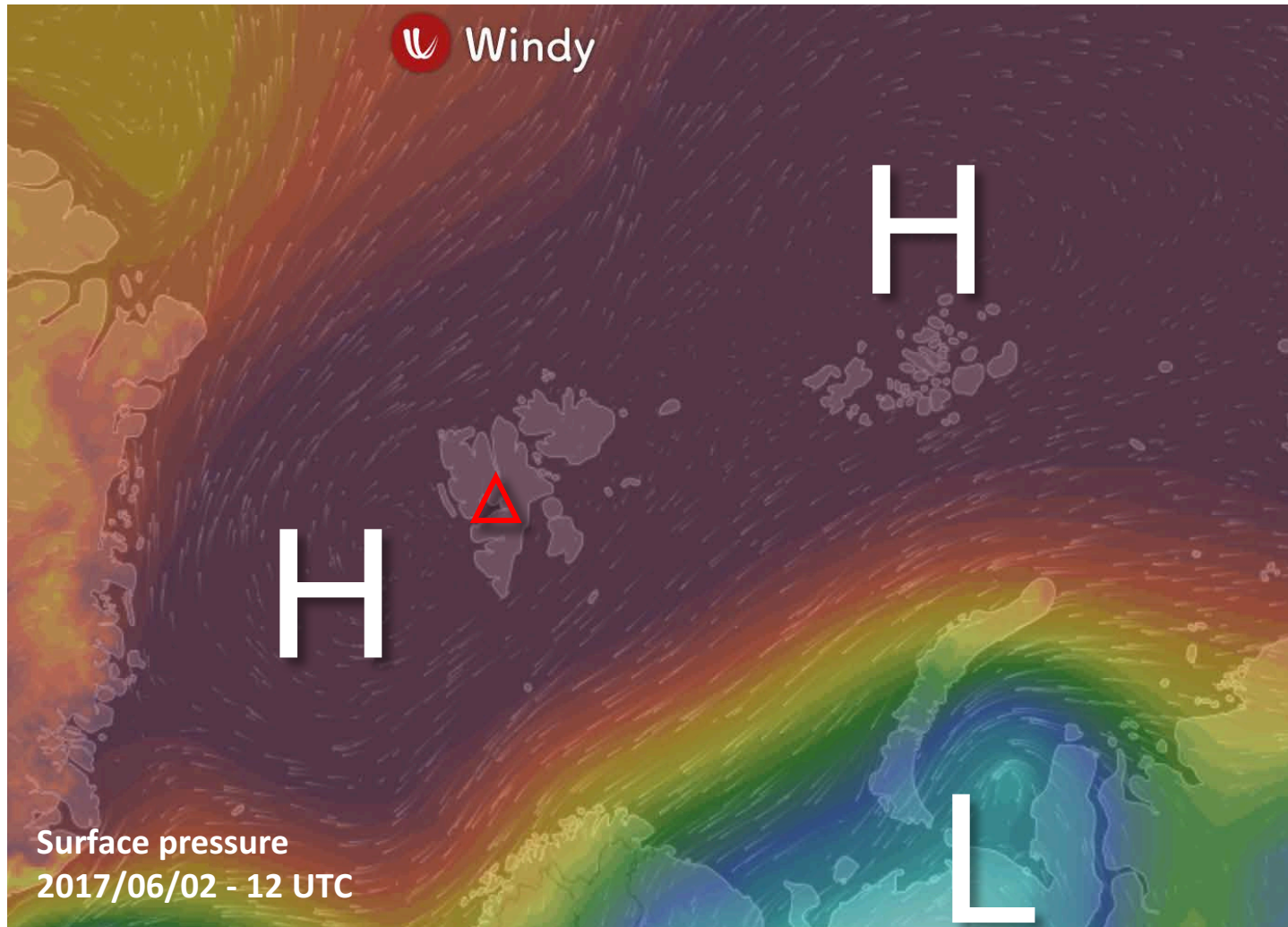
Init : Tue,30MAY2017 00Z

Valid: Thu,01JUN2017 12Z

*2m Temperatur (°C)*



## General Situation Fri 2 June 2017



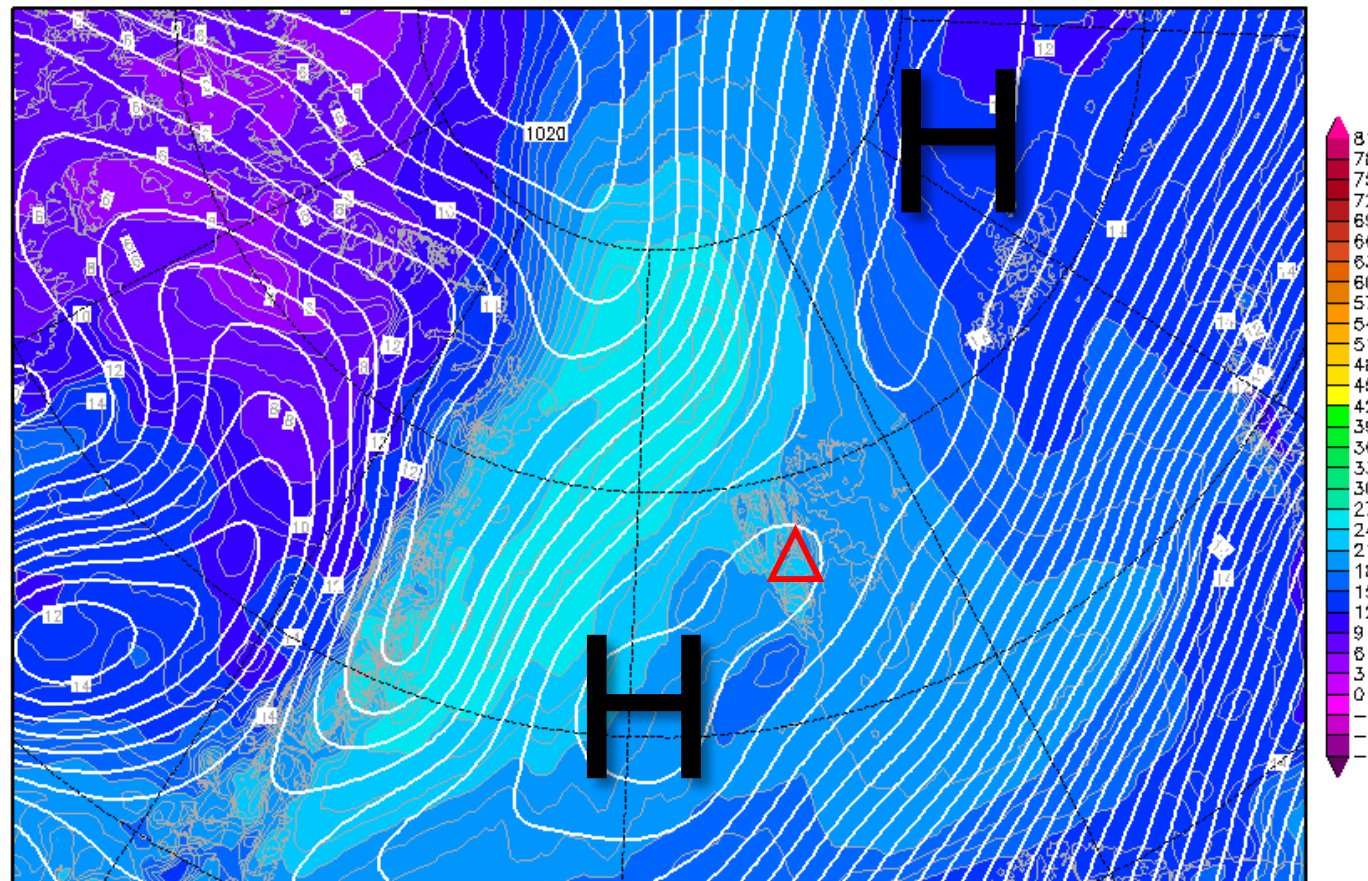


# 850-hPa Theta Equiv. 2 June 2017 @ 12 UTC

Init : Tue,30MAY2017 00Z

Valid: Fri,02JUN2017 12Z

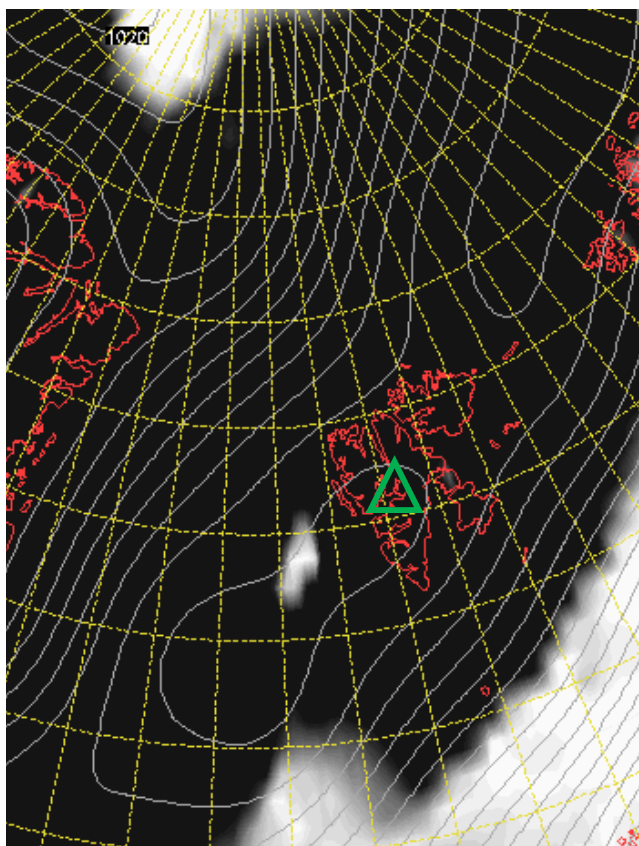
*Bodendruck (hPa) und 850 hPa Aeq.Pot.T. (Grad C)*



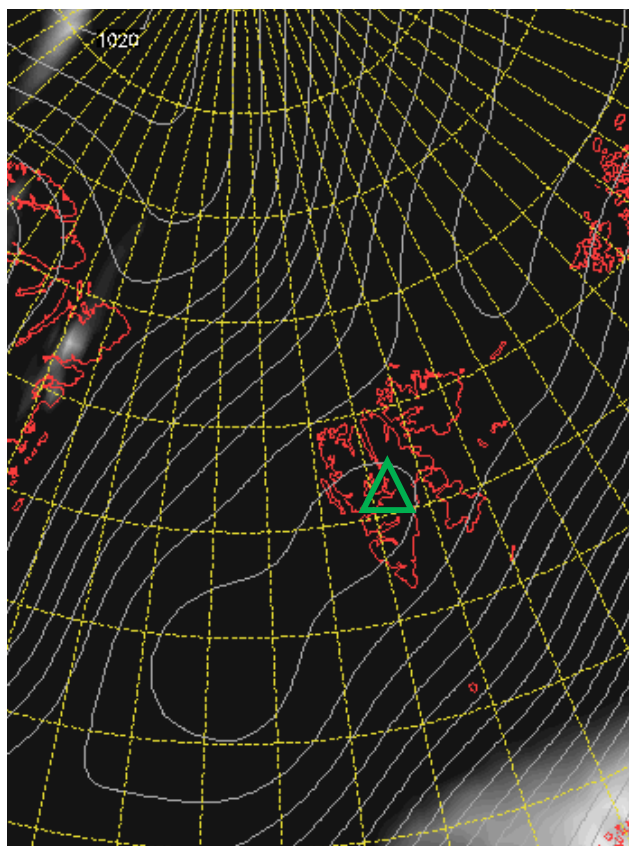


## Cloud Cover 2 June 2017 @ 12 UTC

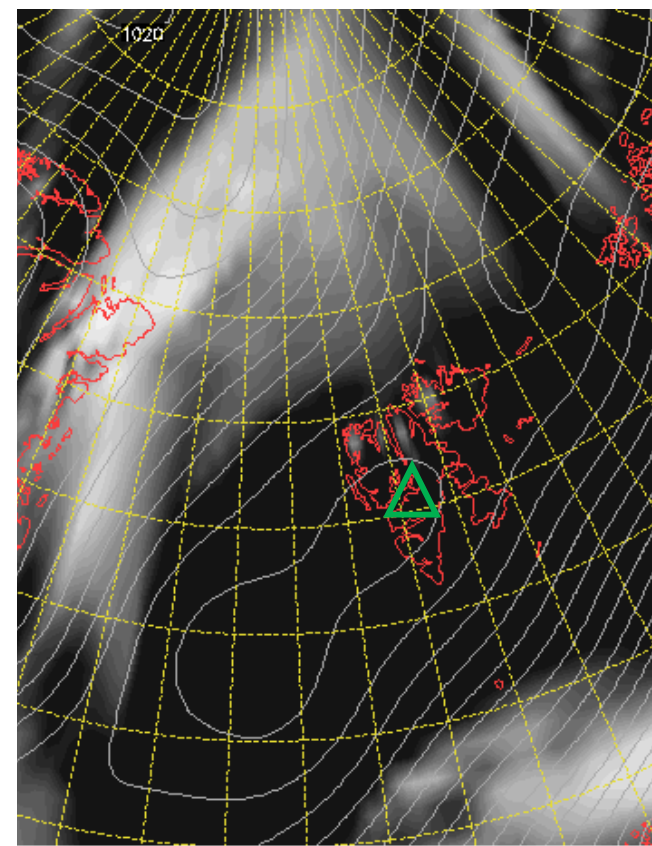
L



M



H

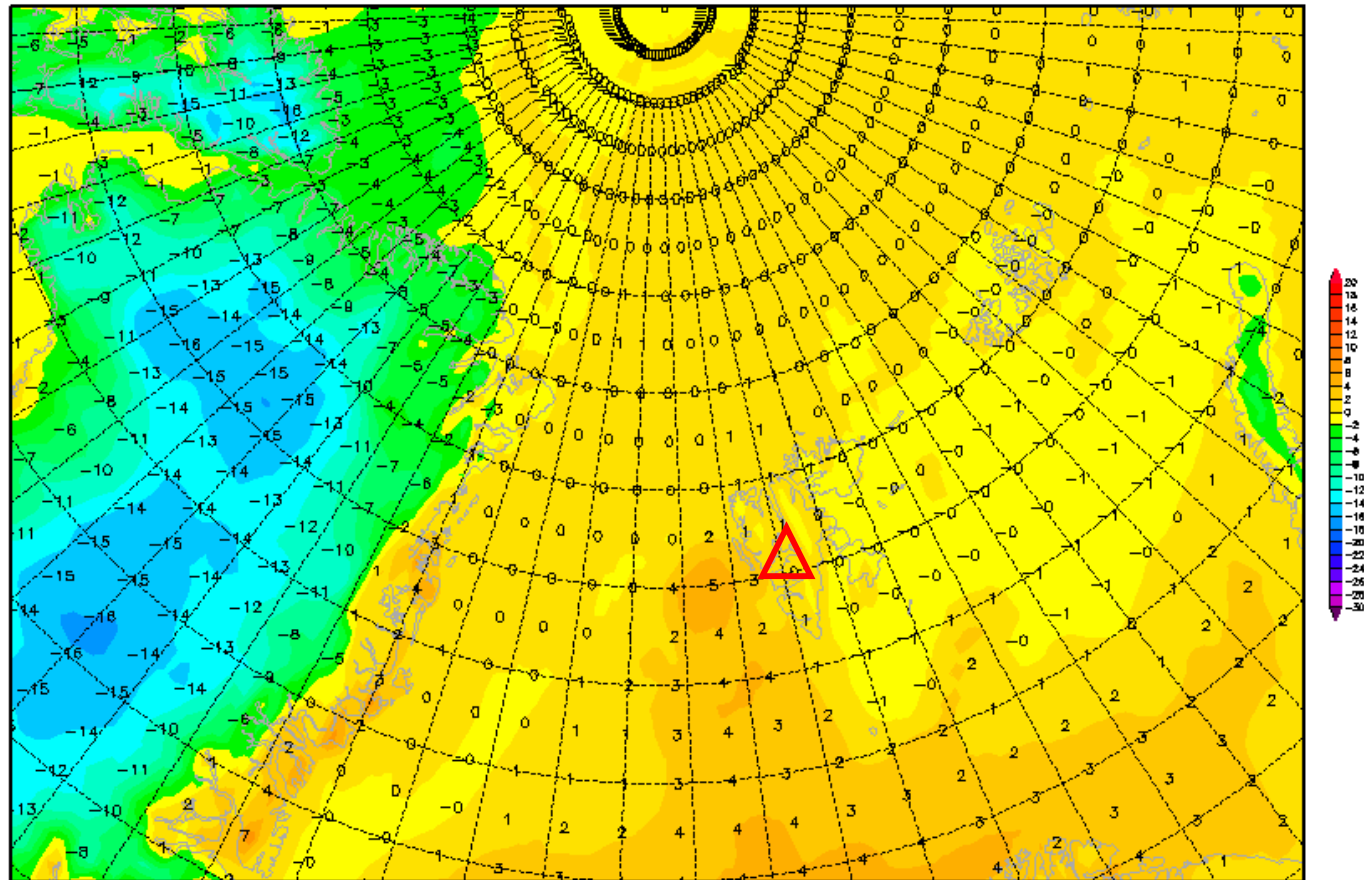


# 2-m temperature 2 June 2017 @ 12 UTC

Init : Tue,30MAY2017 00Z

Valid: Fri,02JUN2017 12Z

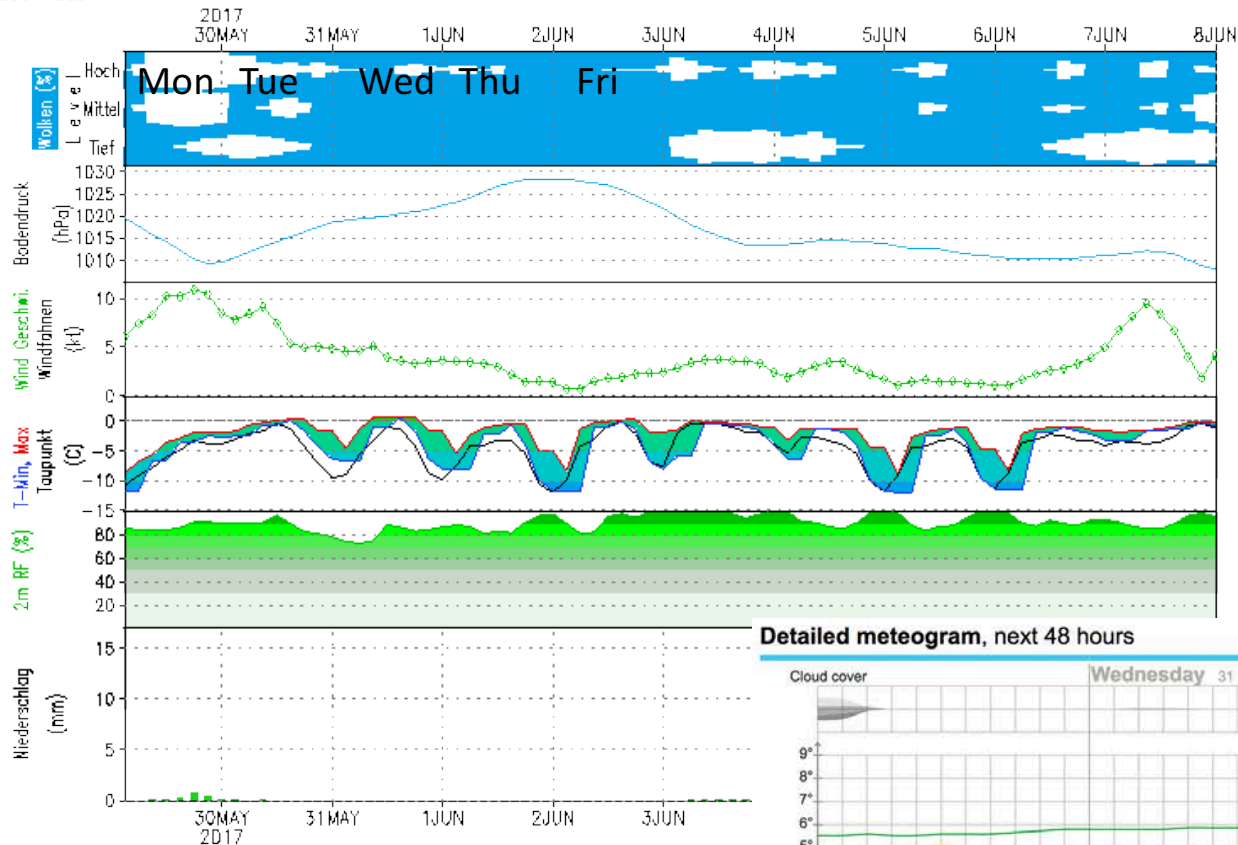
*2m Temperatur (°C)*



# GFS – Meteogramm

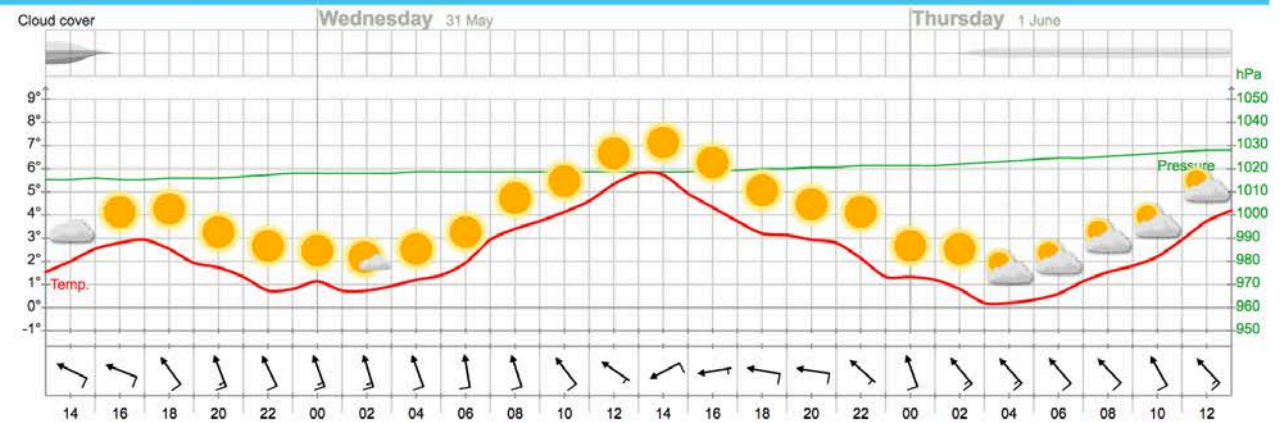
Lon: 15.63 Lat: 78.22 Hgt: 331m

Lauf: 00Z



Heute kein Sonnenaufgang  
Heute kein Sonnenuntergang

## Detailed meteogram, next 48 hours



# Outlook – Meteogram

YR.no

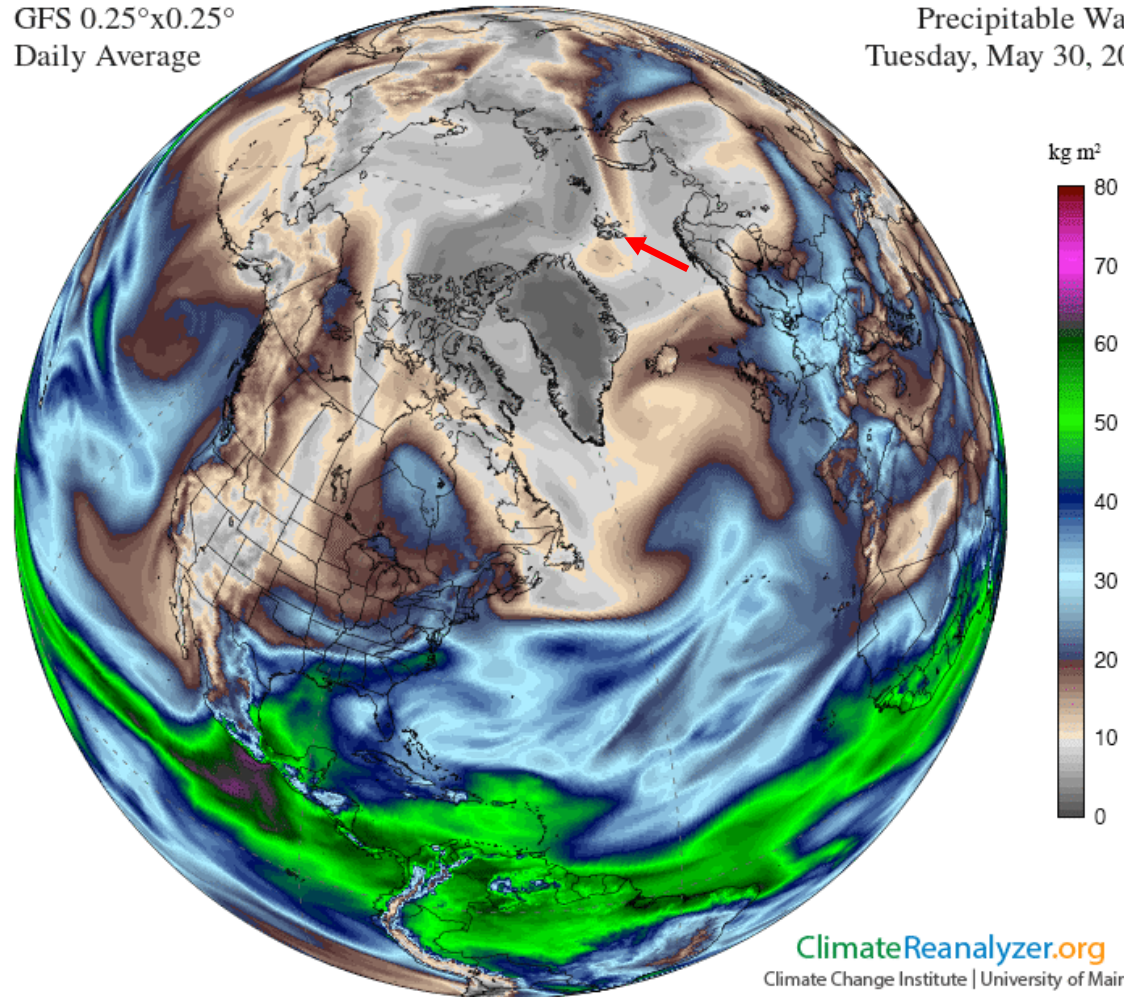




# Precip. Water 30 May 2017

GFS 0.25°x0.25°  
Daily Average

Precipitable Water  
Tuesday, May 30, 2017



# Sounding Longyearbyen 29 May 2017 @ 12 UTC

