

Weather briefing

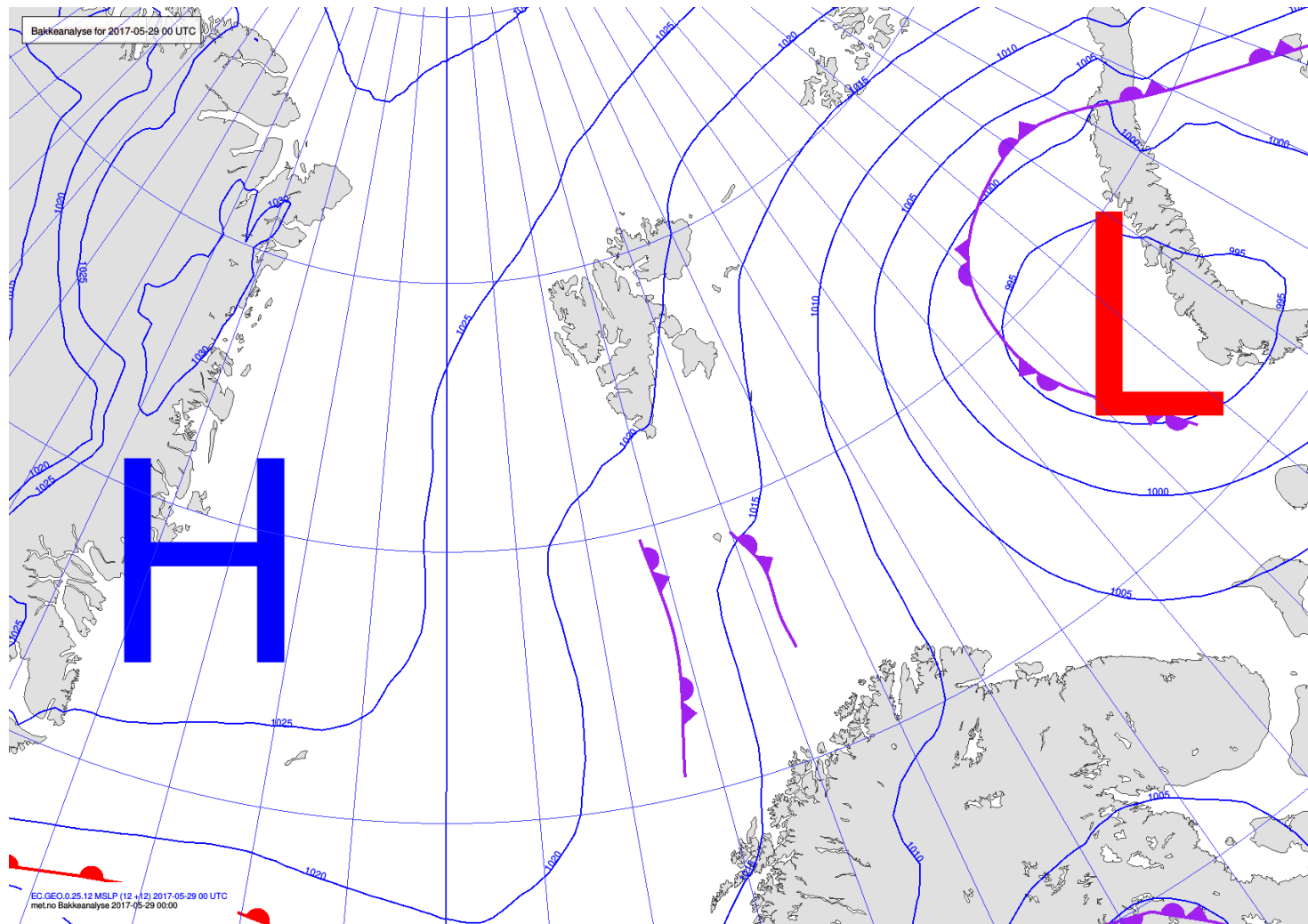
ACLOUD Longyearbyen, Svalbard

Mon 29 May 2017 – **Tue 30 May** – Thu 1 June 2017

Summary

A low in the Barents Sea is moving towards southwest, and will during the day direct a northeasterly increasing wind flow over Svalbard area. Snow in northern and eastern areas, in central regions cloudy or partly cloudy and mainly dry, becoming scattered snow after noon.

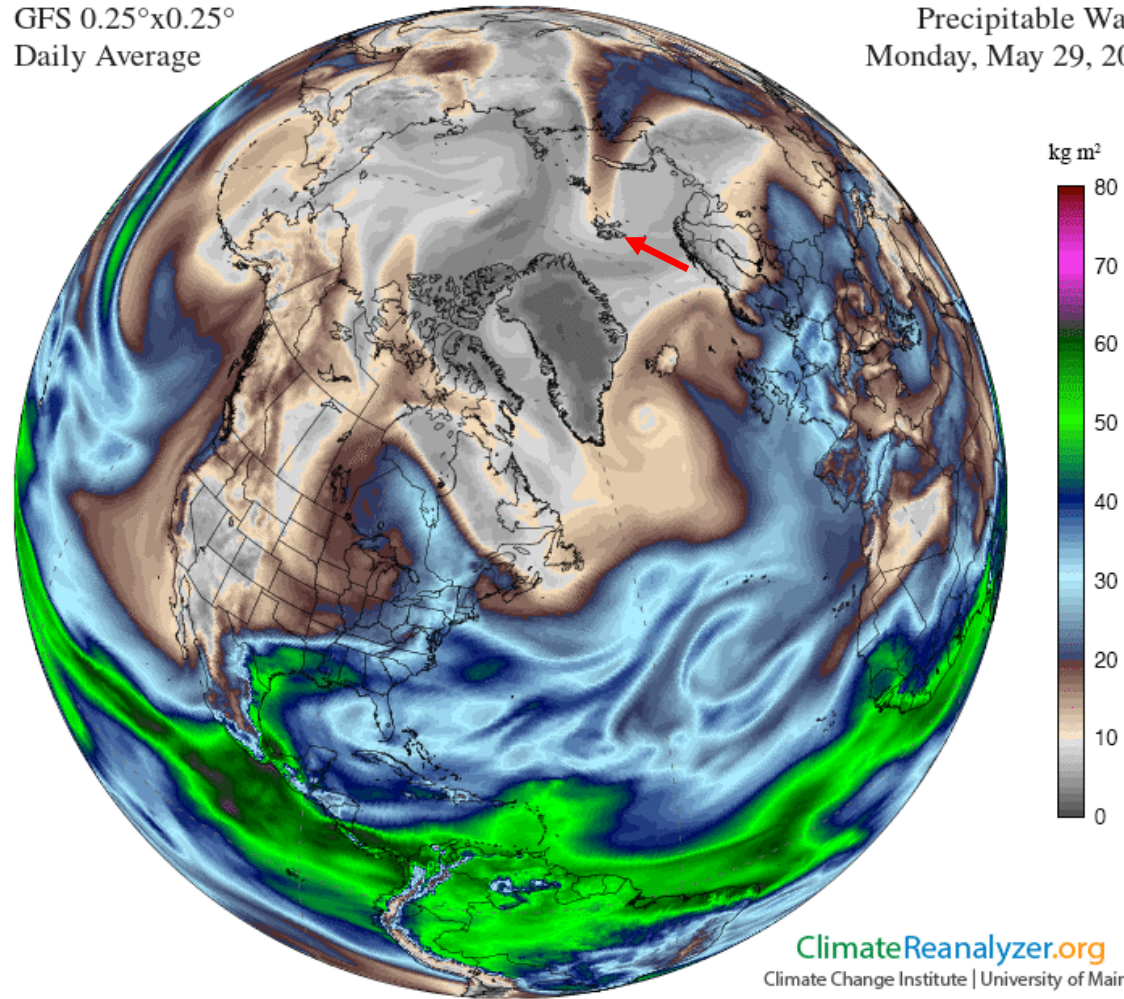
Analysis 29 May 2017 @ 12 UTC



Precip. Water 29 May 2017

GFS 0.25°x0.25°
Daily Average

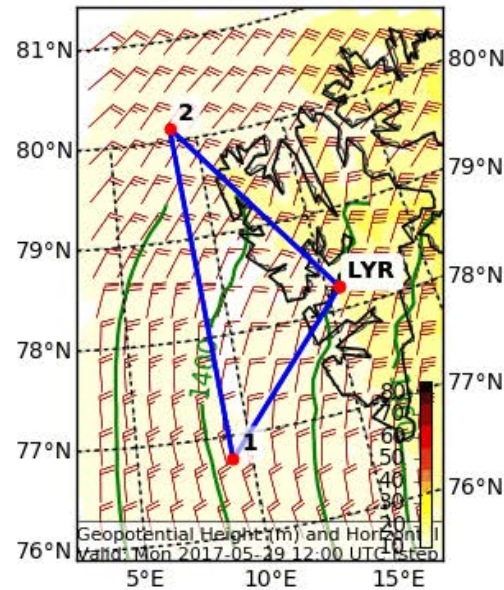
Precipitable Water
Monday, May 29, 2017



Wind

Today 12 UTC

Geopotential Height (m) and Horizontal Wind (m/s) (Wind Speed 10-85 m
Valid: Mon 2017-05-29 12:00 UTC (step 12 hrs from Mon 2017-05-29 00:00 UTC)



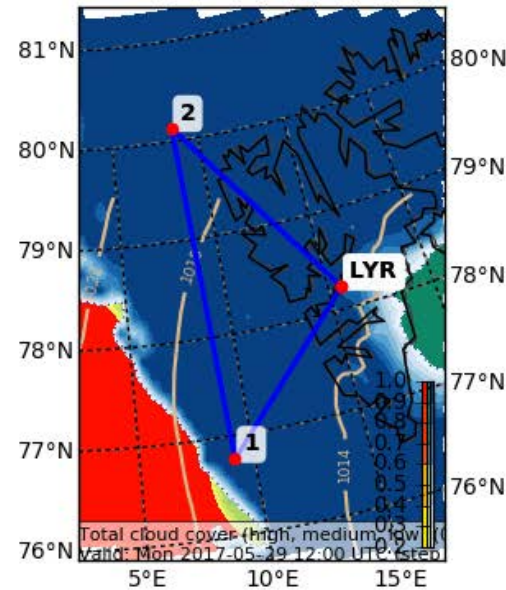
EPSG:77790000

Clouds

Today 12 UTC

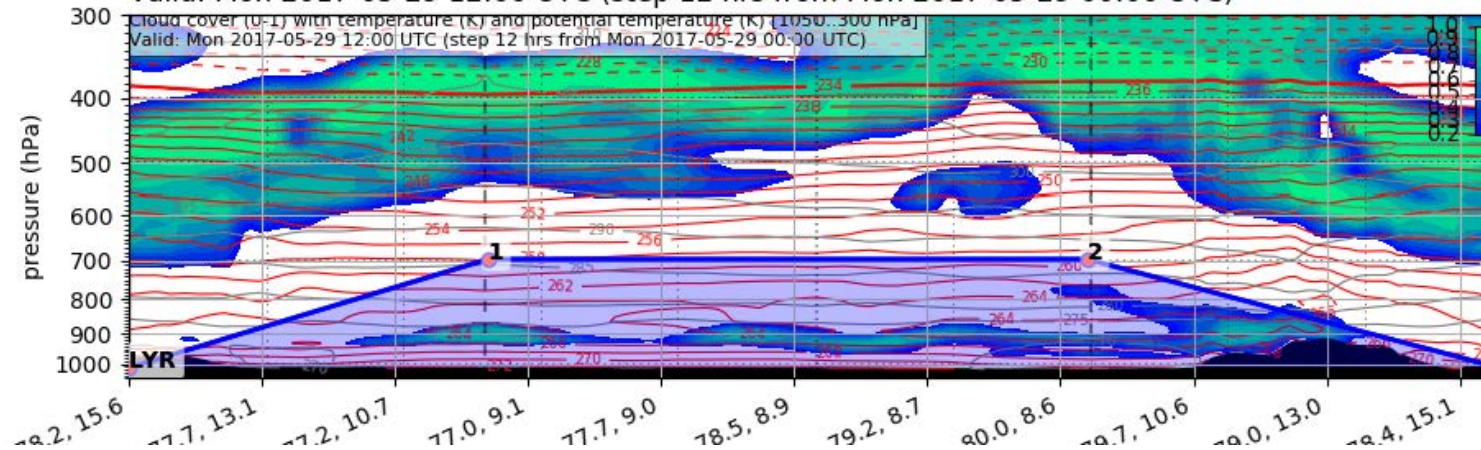
Cloud Cover (0-1) (Total Cloud Cover)

Valid: Mon 2017-05-29 12:00 UTC (step 12 hrs from Mon 2017-05-29 00:00 UTC)

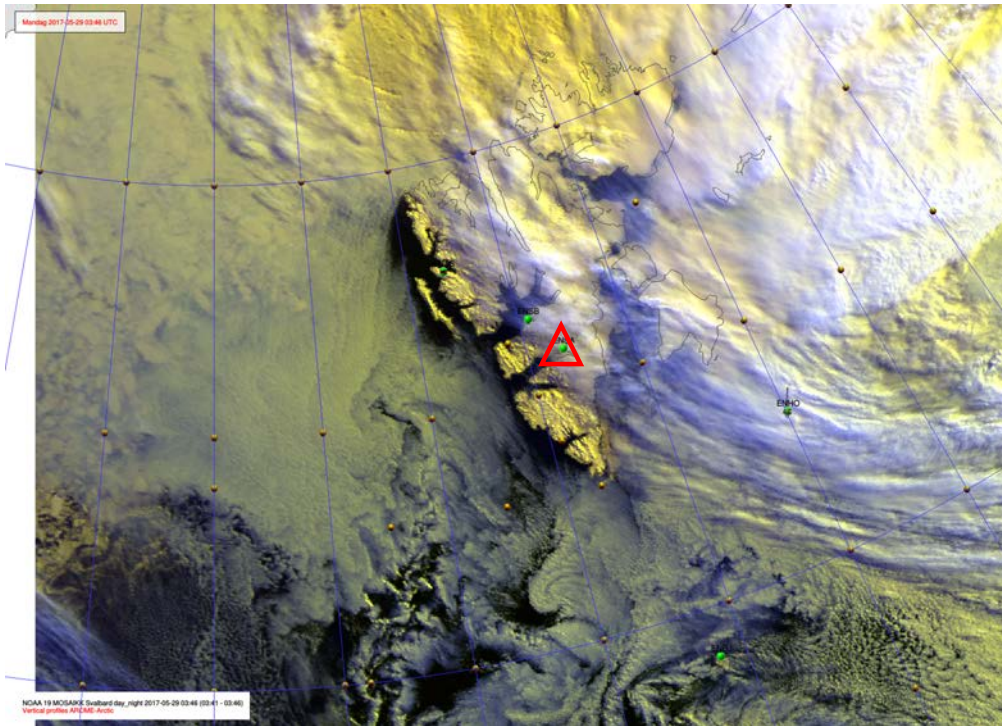


EPSG:77790000

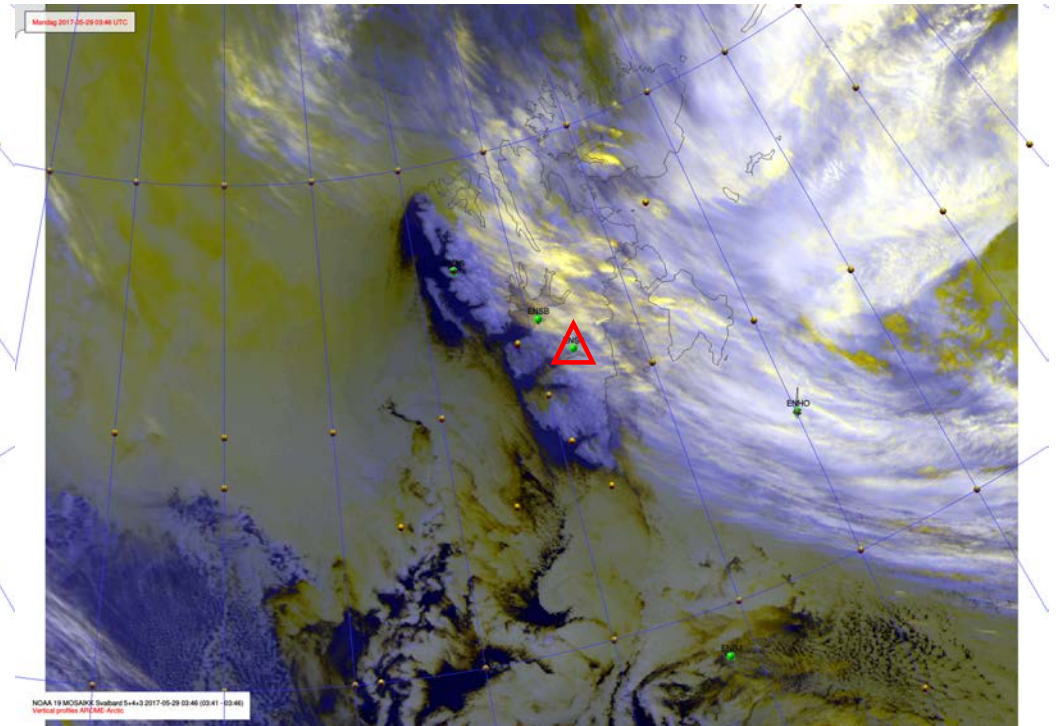
Valid: Mon 2017-05-29 12:00 UTC (step 12 hrs from Mon 2017-05-29 00:00 UTC)



NOAA-19 29 May 2017 @ 0446 UTC

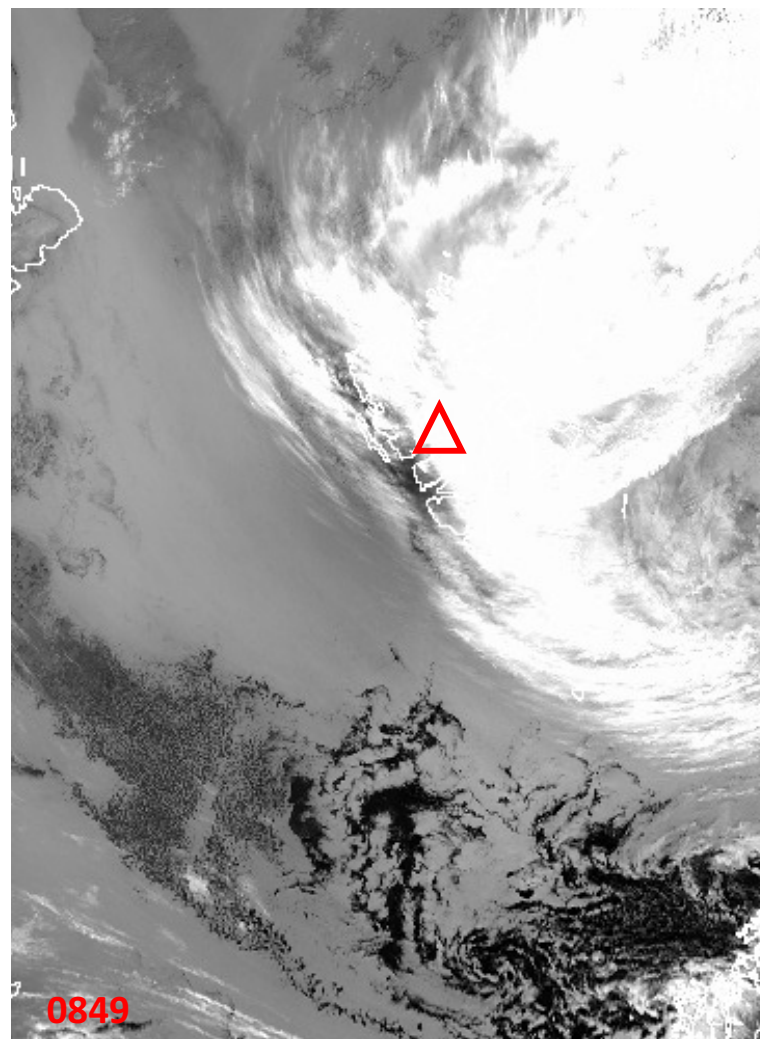


10.8 μm



IR, Ch 5+4+3

NOAA-19 29 May 2017 @ 0849 UTC

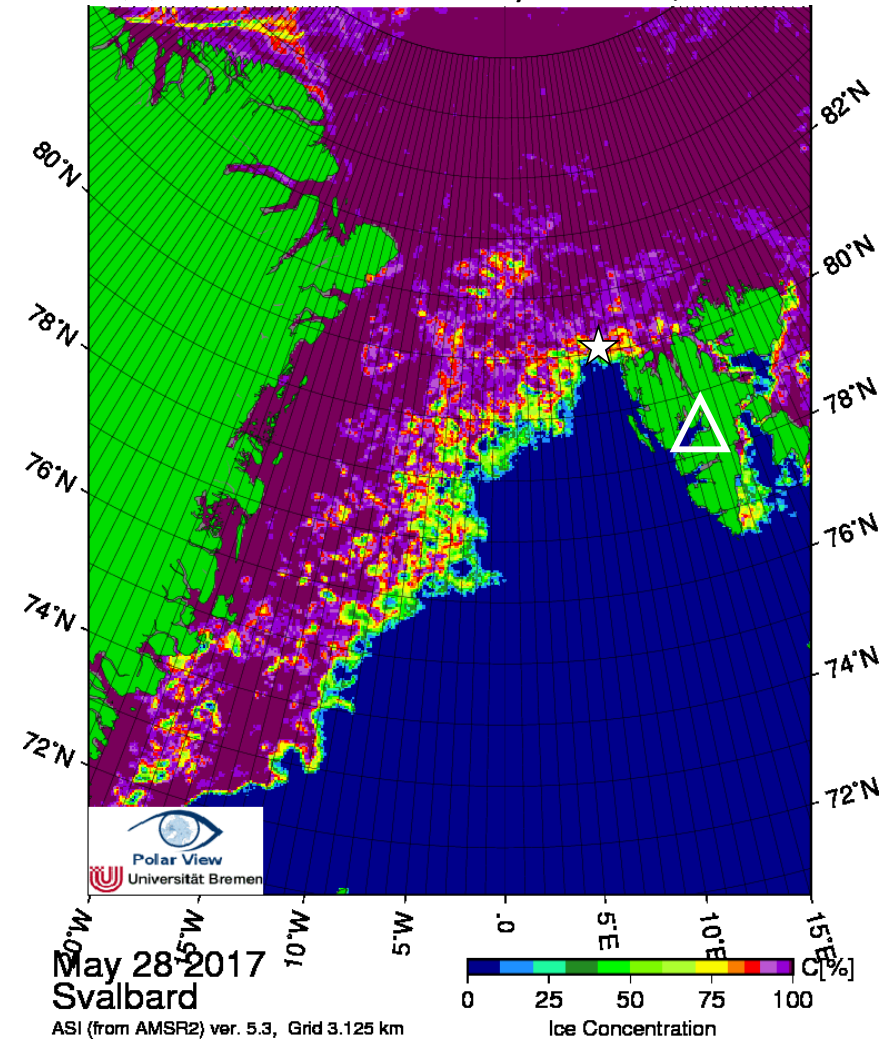
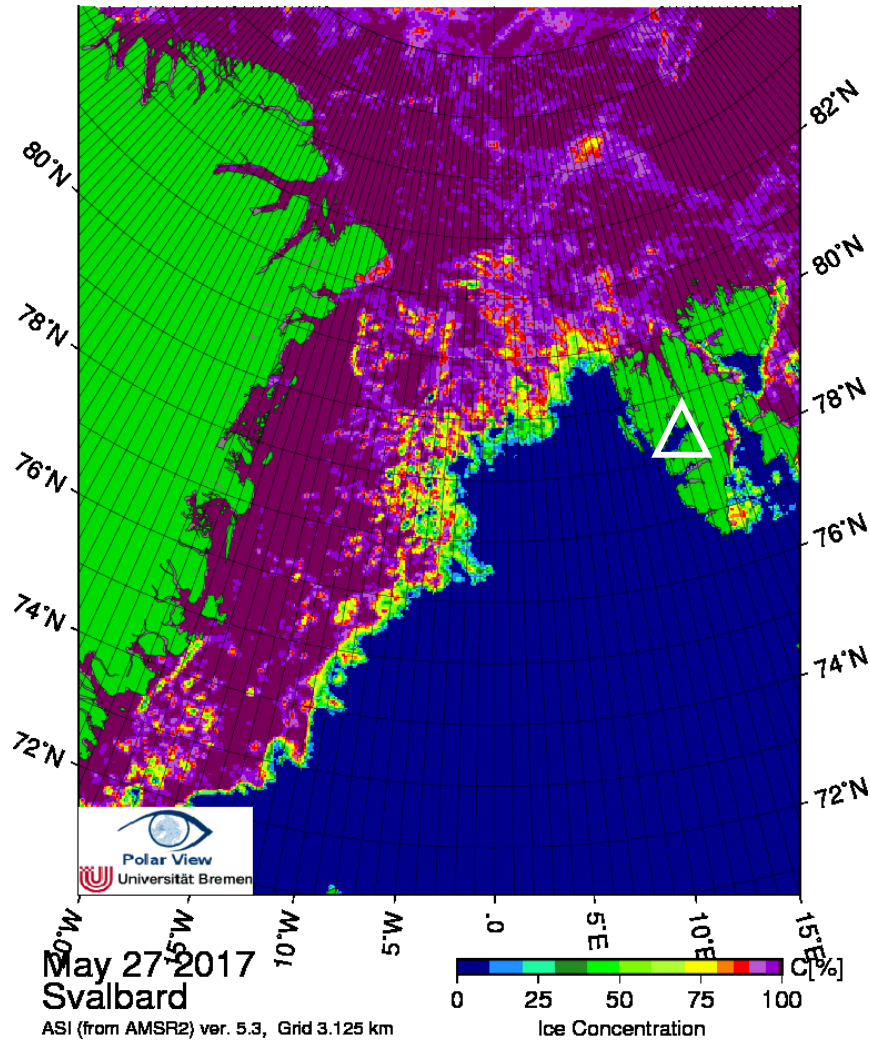


0849

10.8 μm

Arctic sea ice 27 & 28 May 2017

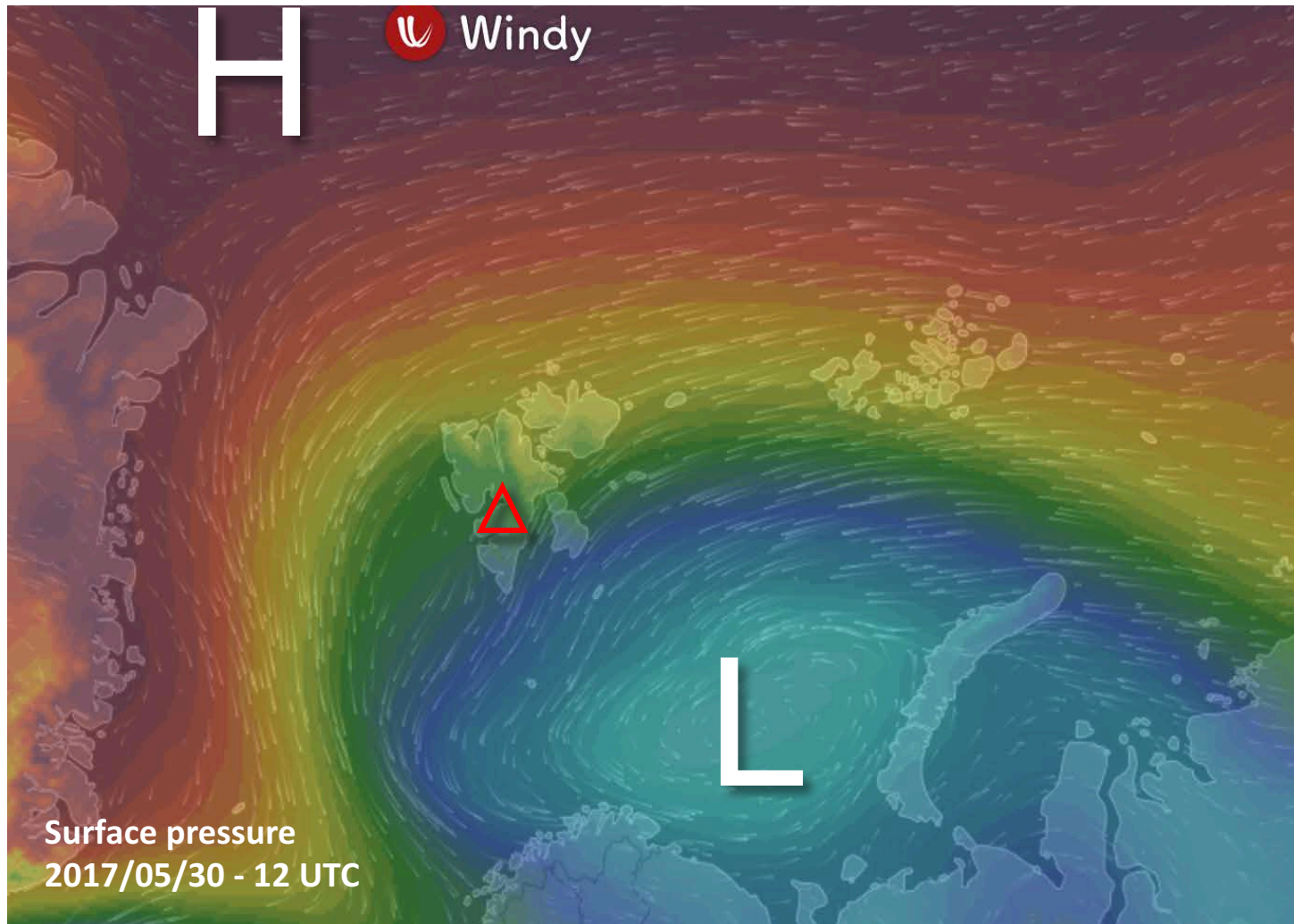
☆ RV Polarstern 31 May 80°08'N, 8°33'E



Flight Day

Tue 30 May 2017

General Situation Tue 30 May 2017

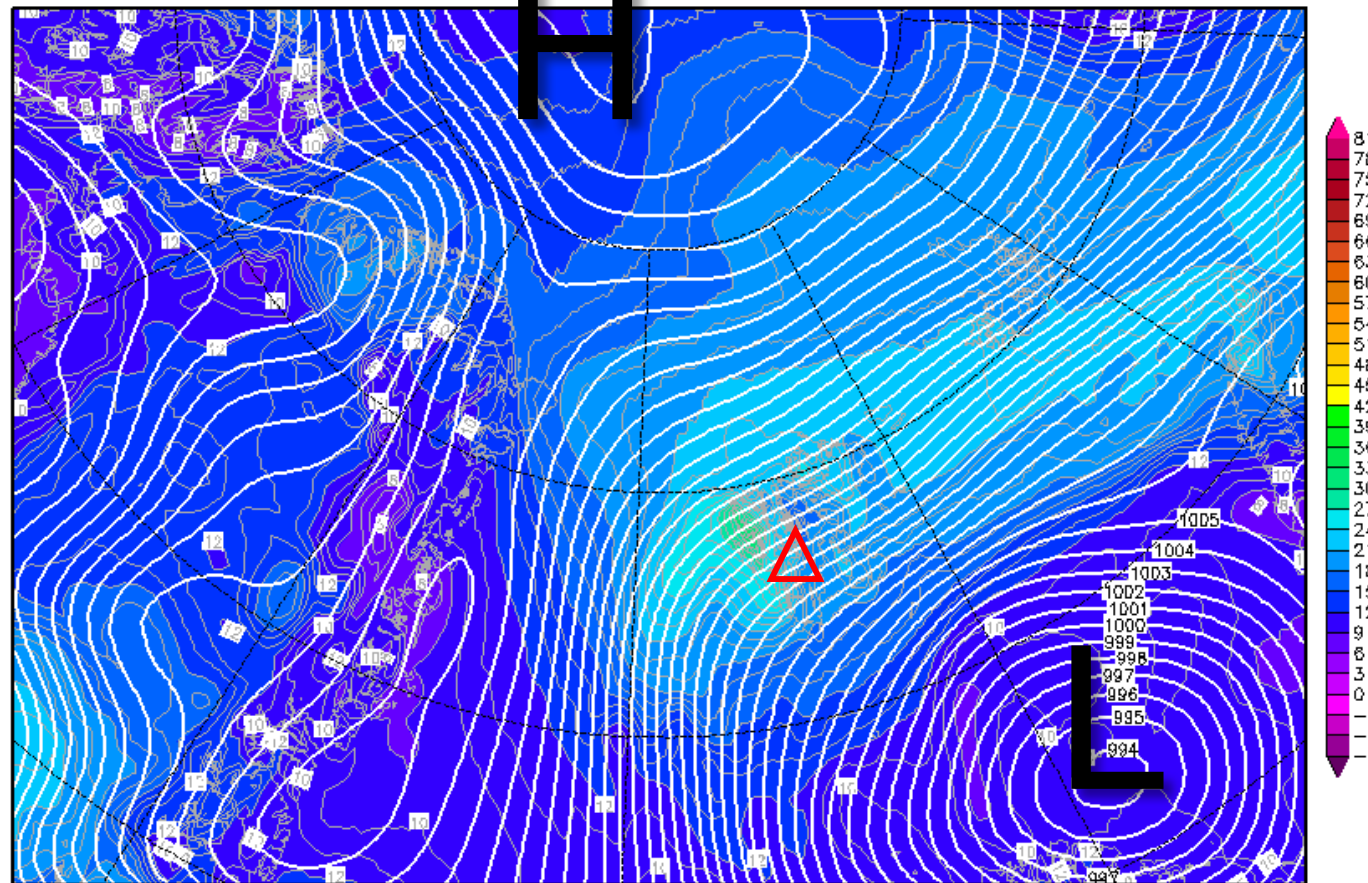


850-hPa Theta Equiv. 30 May 2017 @ 12 UTC

Init : Sun,28MAY2017 00Z

Valid: Tue,30MAY2017 12Z

Bodendruck (hPa) und 850 hPa Aeq.Pot.T. (Grad C)

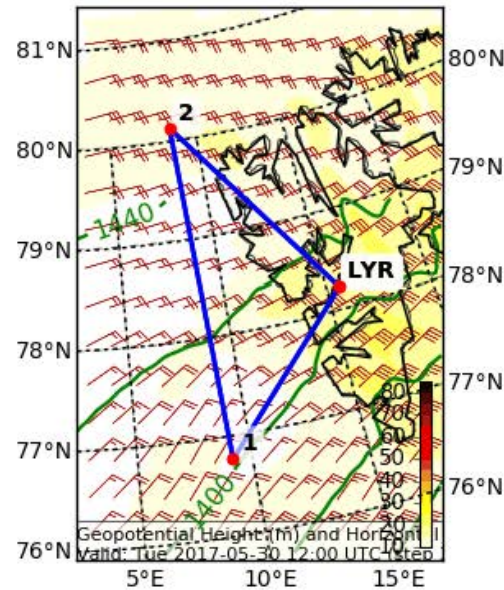


Daten: GFS-Modell des amerikanischen Wetterdienstes
(C) Wetterzentrale
www.wetterzentrale.de

Wind

Tomorrow 12 UTC

Geopotential Height (m) and Horizontal Wind (m/s) (Wind Speed 10-85 m
Valid: Tue 2017-05-30 12:00 UTC (step 36 hrs from Mon 2017-05-29 00:00 UTC)



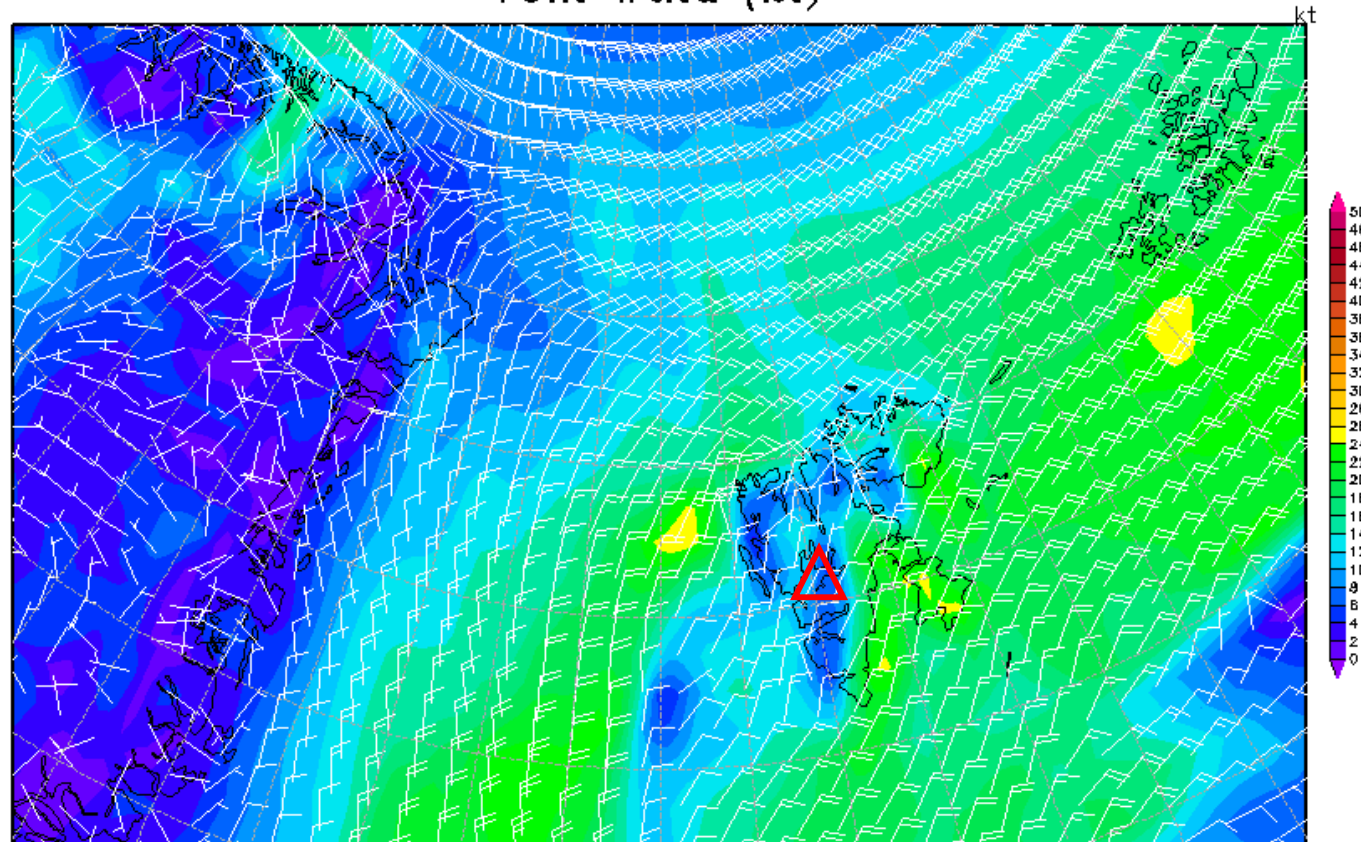
EPSG:77790000

10-m Wind 30 May 2017 @ 12 UTC

Init : Mon,29MAY2017 00Z

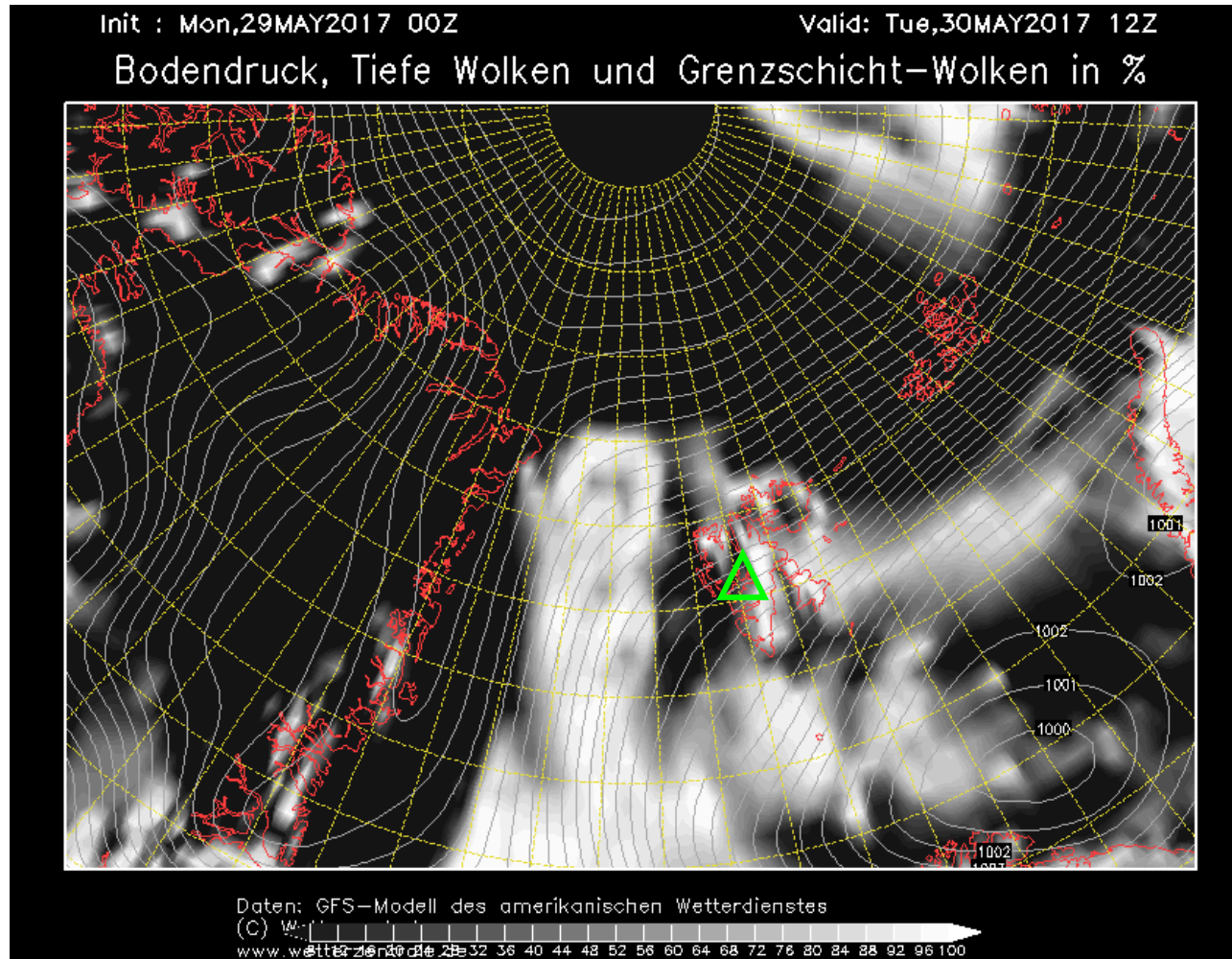
Valid: Tue,30MAY2017 12Z

10m Wind (kt)

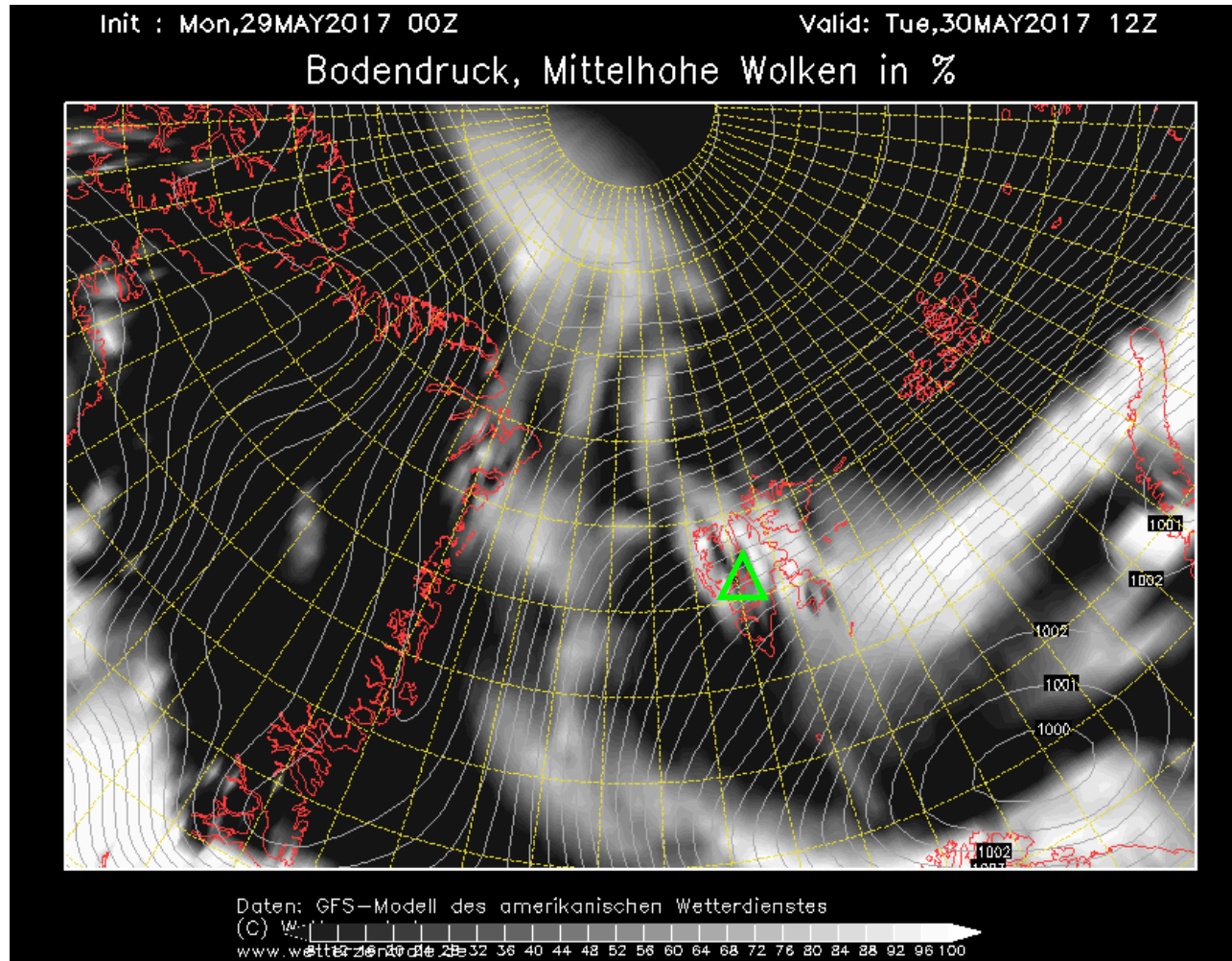


Daten: GFS-Modell des amerikanischen Wetterdienstes
(C) Wetterzentrale
www.wetterzentrale.de

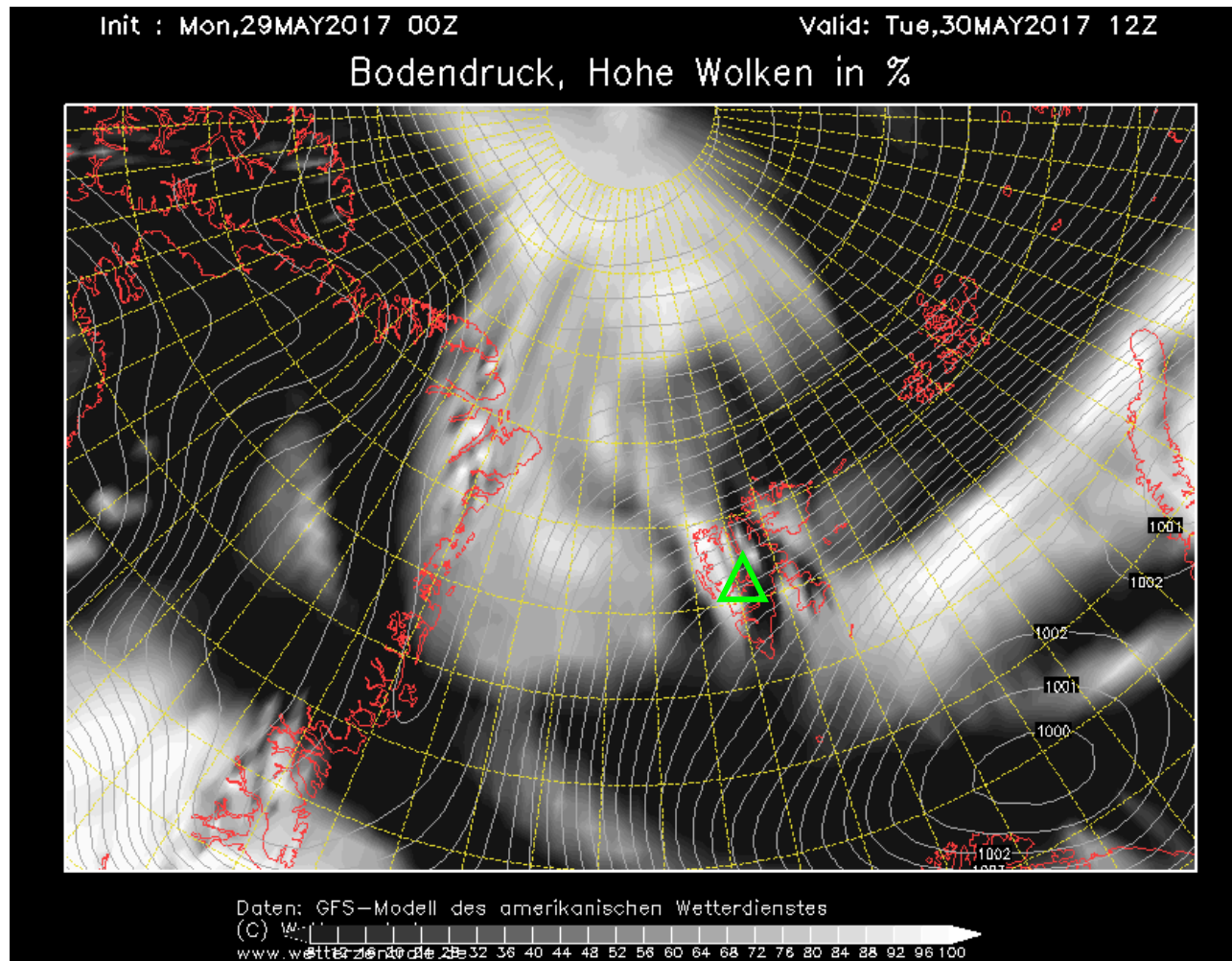
Low-level cloud cover 30 May 2017 @ 12 UTC



Mid-level cloud cover 30 May 2017 @ 12 UTC



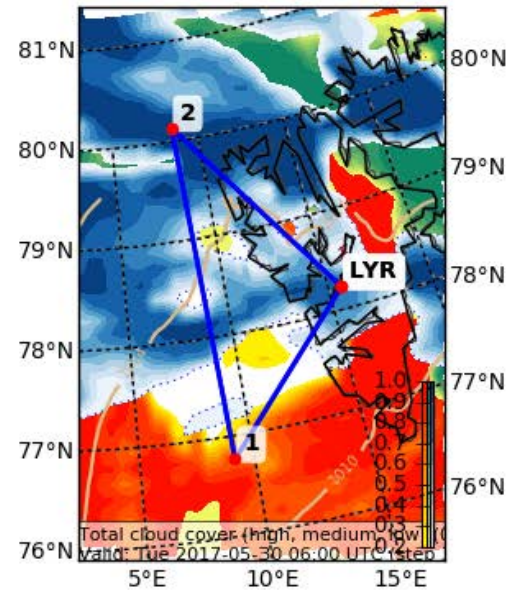
High-level cloud cover 30 May 2017 @ 12 UTC



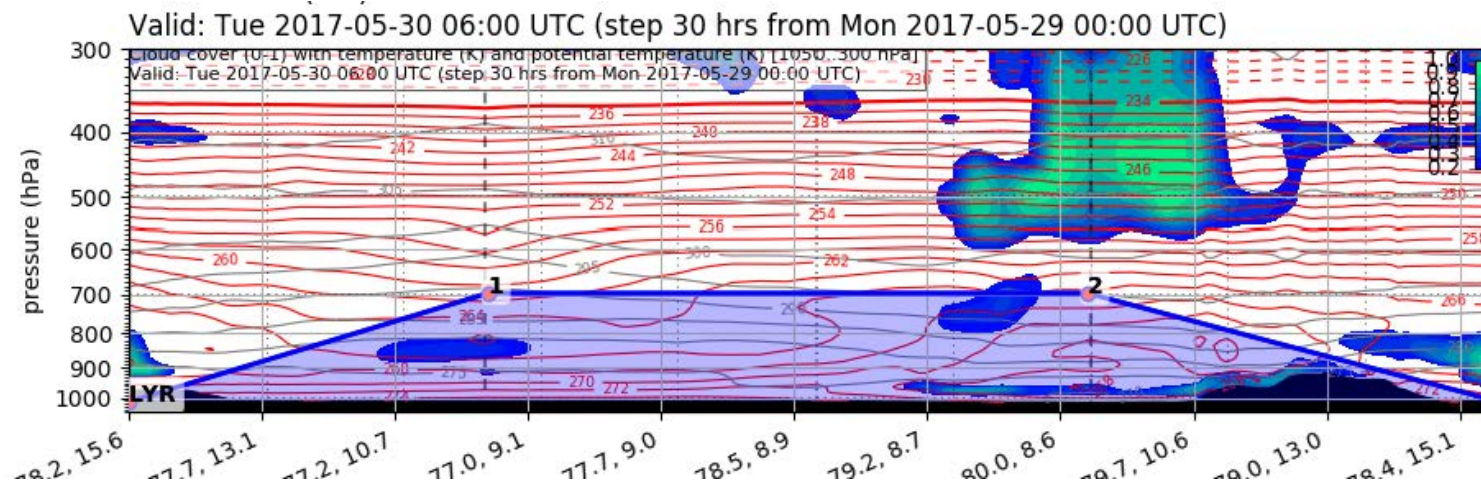
Forecast Tomorrow 06 UTC

Cloud Cover (0-1) (Total Cloud Cover)

Valid: Tue 2017-05-30 06:00 UTC (step 30 hrs from Mon 2017-05-29 00:00 UTC)



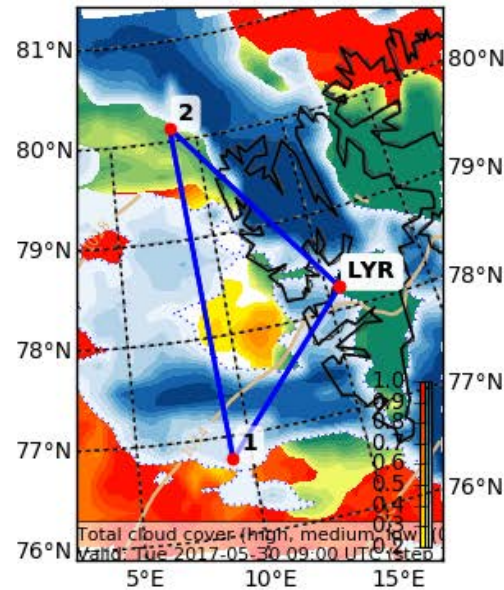
EPSG:77790000



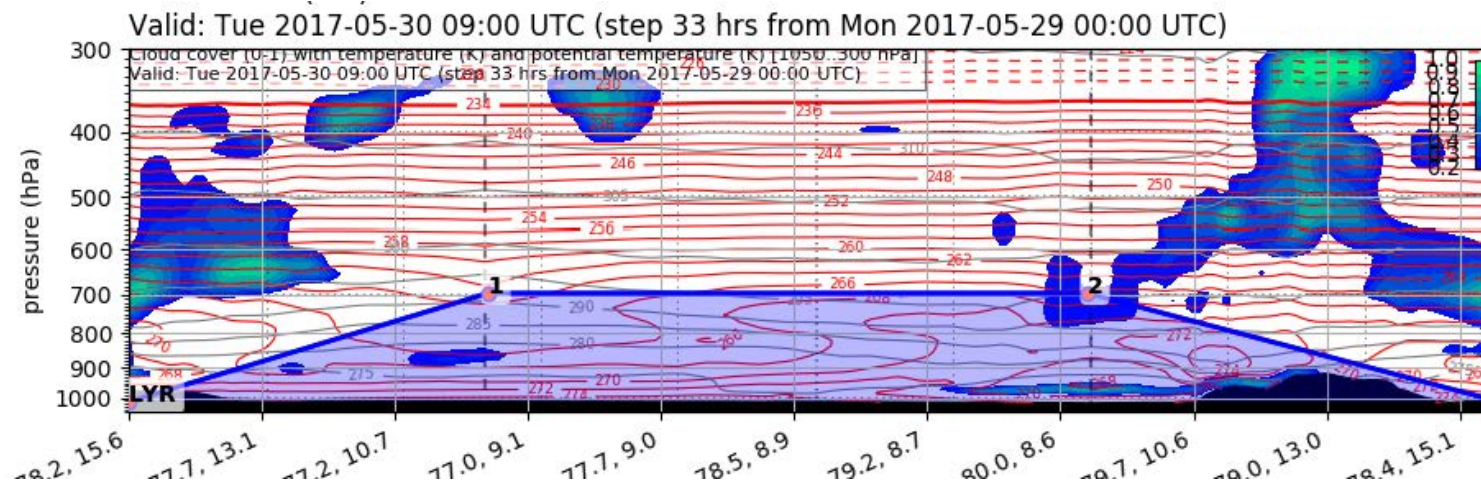
Forecast Tomorrow 09 UTC

Cloud Cover (0-1) (Total Cloud Cover)

Valid: Tue 2017-05-30 09:00 UTC (step 33 hrs from Mon 2017-05-29 00:00 UTC)



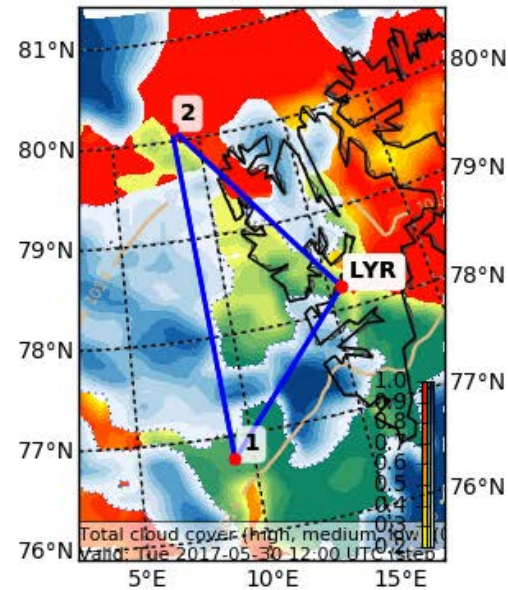
EPSG:77790000



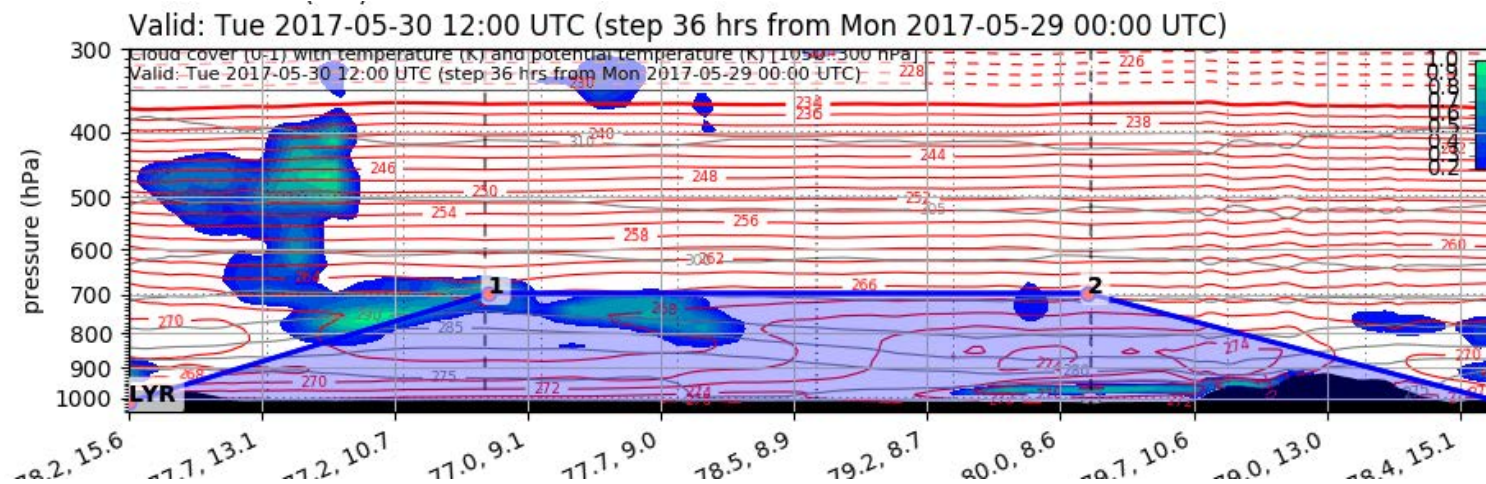
Forecast Tomorrow 12 UTC

Cloud Cover (0-1) (Total Cloud Cover)

Valid: Tue 2017-05-30 12:00 UTC (step 36 hrs from Mon 2017-05-29 00:00 UTC)



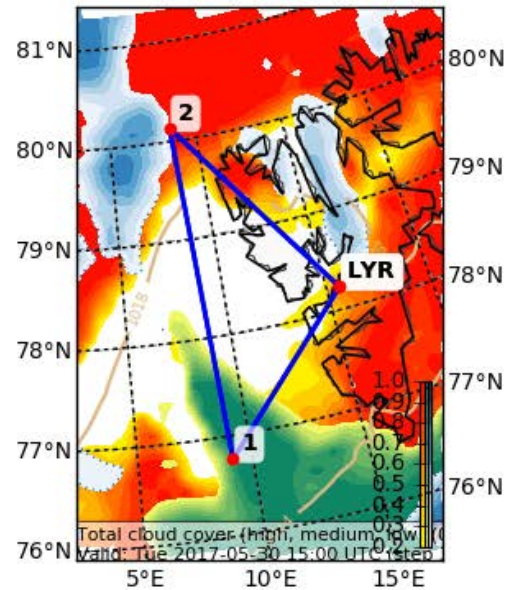
EPSG:77790000



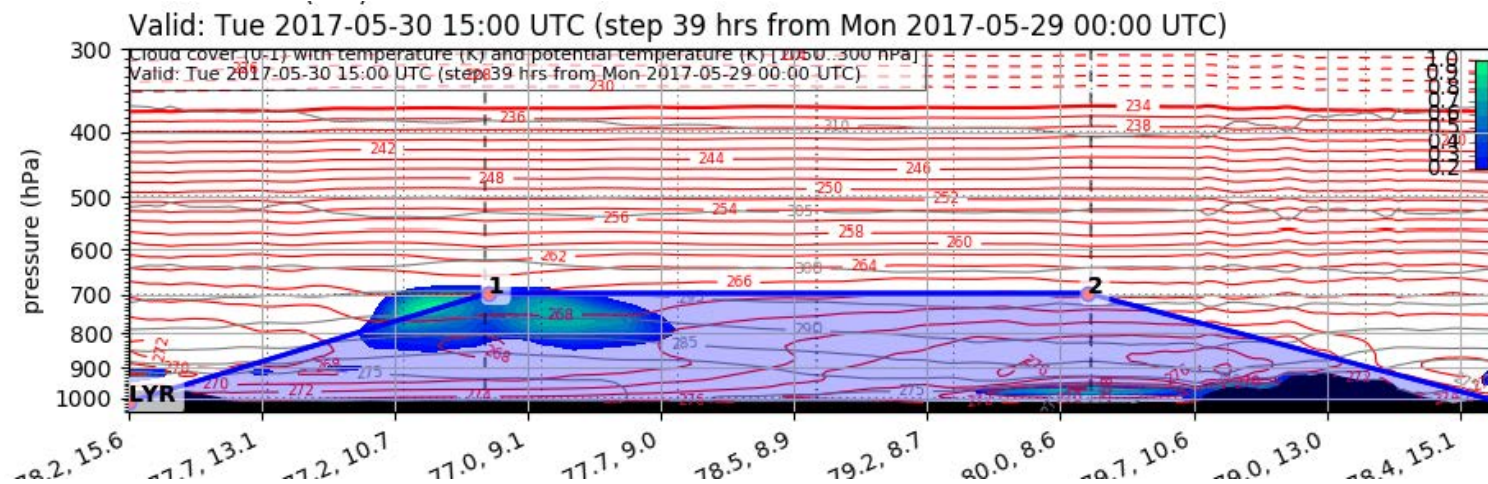
Forecast Tomorrow 15 UTC

Cloud Cover (0-1) (Total Cloud Cover)

Valid: Tue 2017-05-30 15:00 UTC (step 39 hrs from Mon 2017-05-29 00:00 UTC)



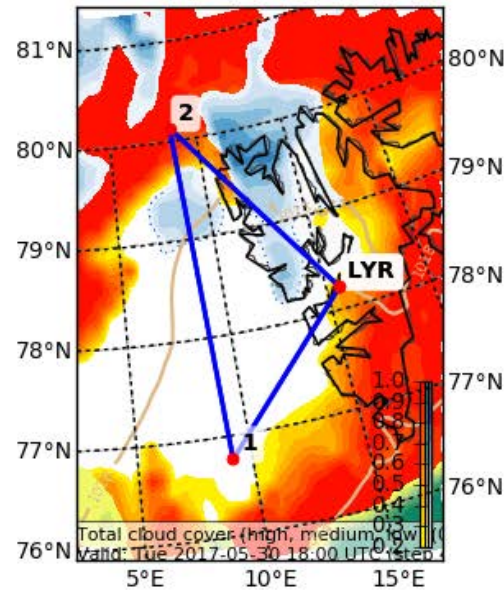
EPSG:77790000



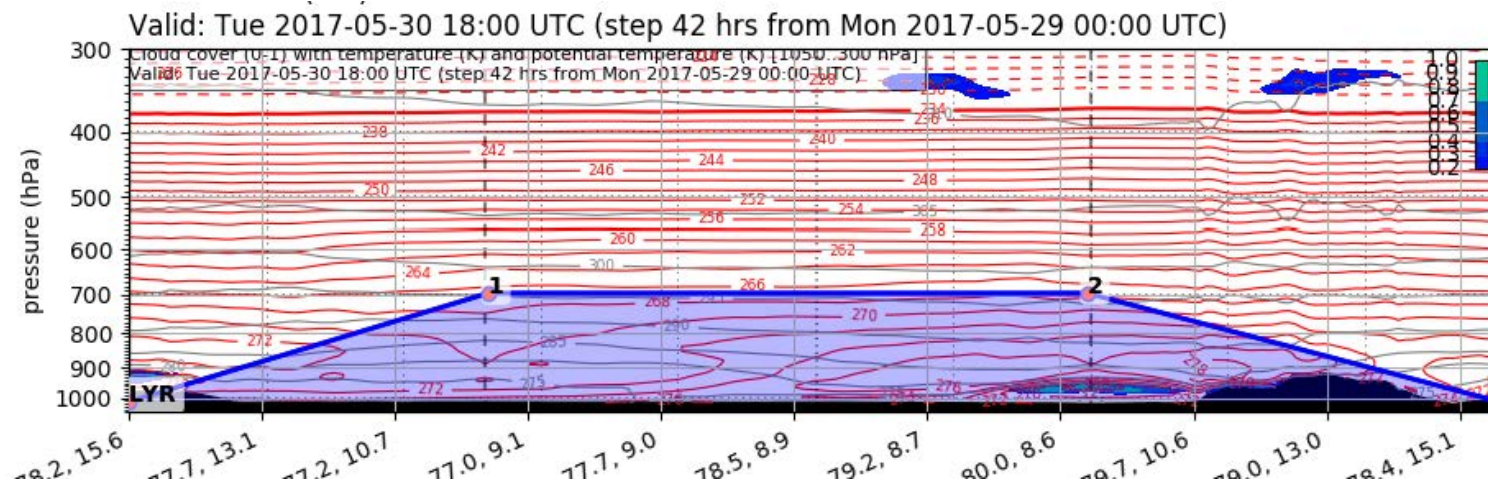
Forecast Tomorrow 18 UTC

Cloud Cover (0-1) (Total Cloud Cover)

Valid: Tue 2017-05-30 18:00 UTC (step 42 hrs from Mon 2017-05-29 00:00 UTC)



EPSG:77790000

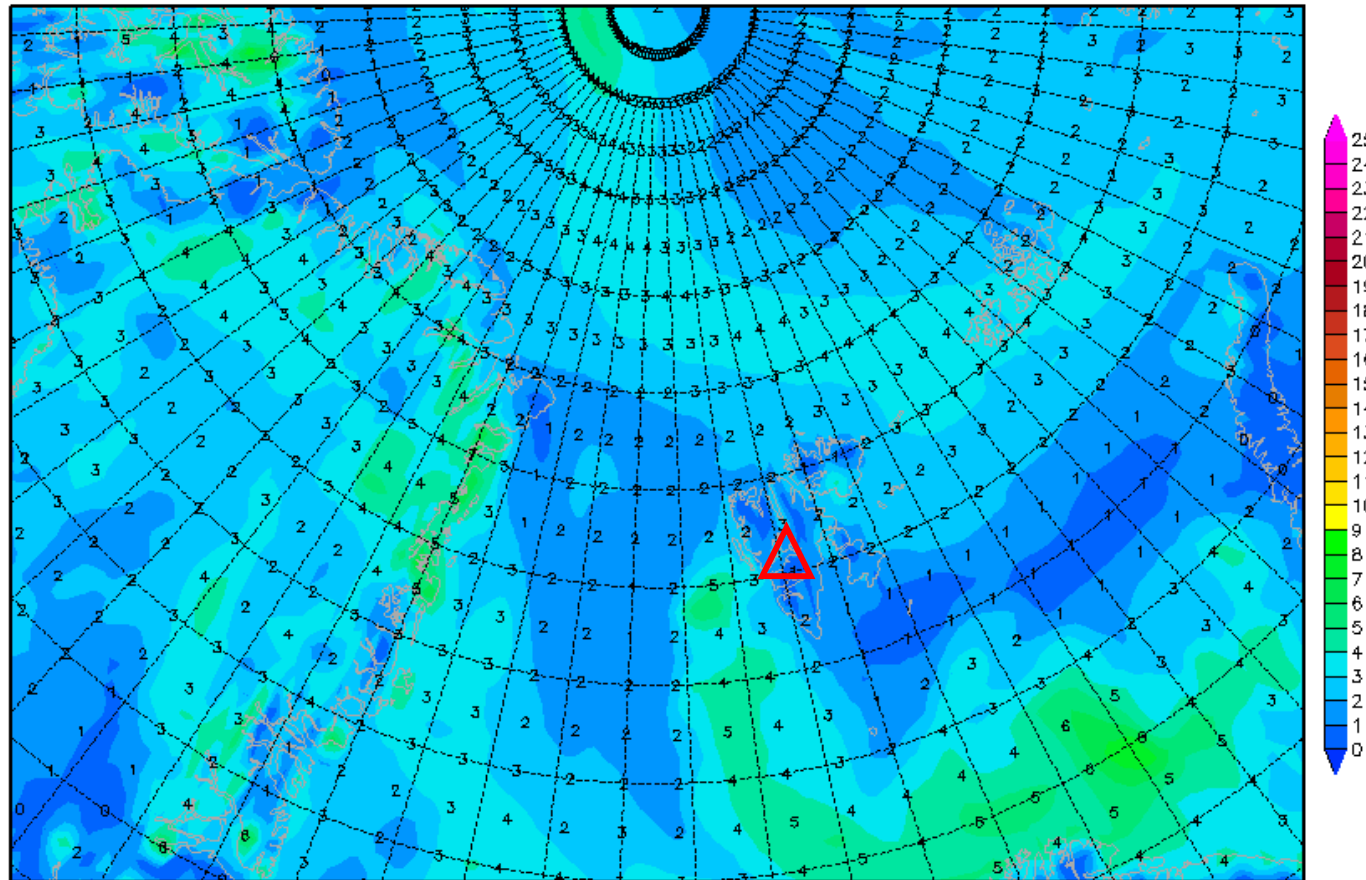


2-m dew point diff. 30 May 2017 @ 12 UTC

Init : Mon,29MAY2017 00Z

Valid: Tue,30MAY2017 12Z

2m (Temperatur-Taupunkt)

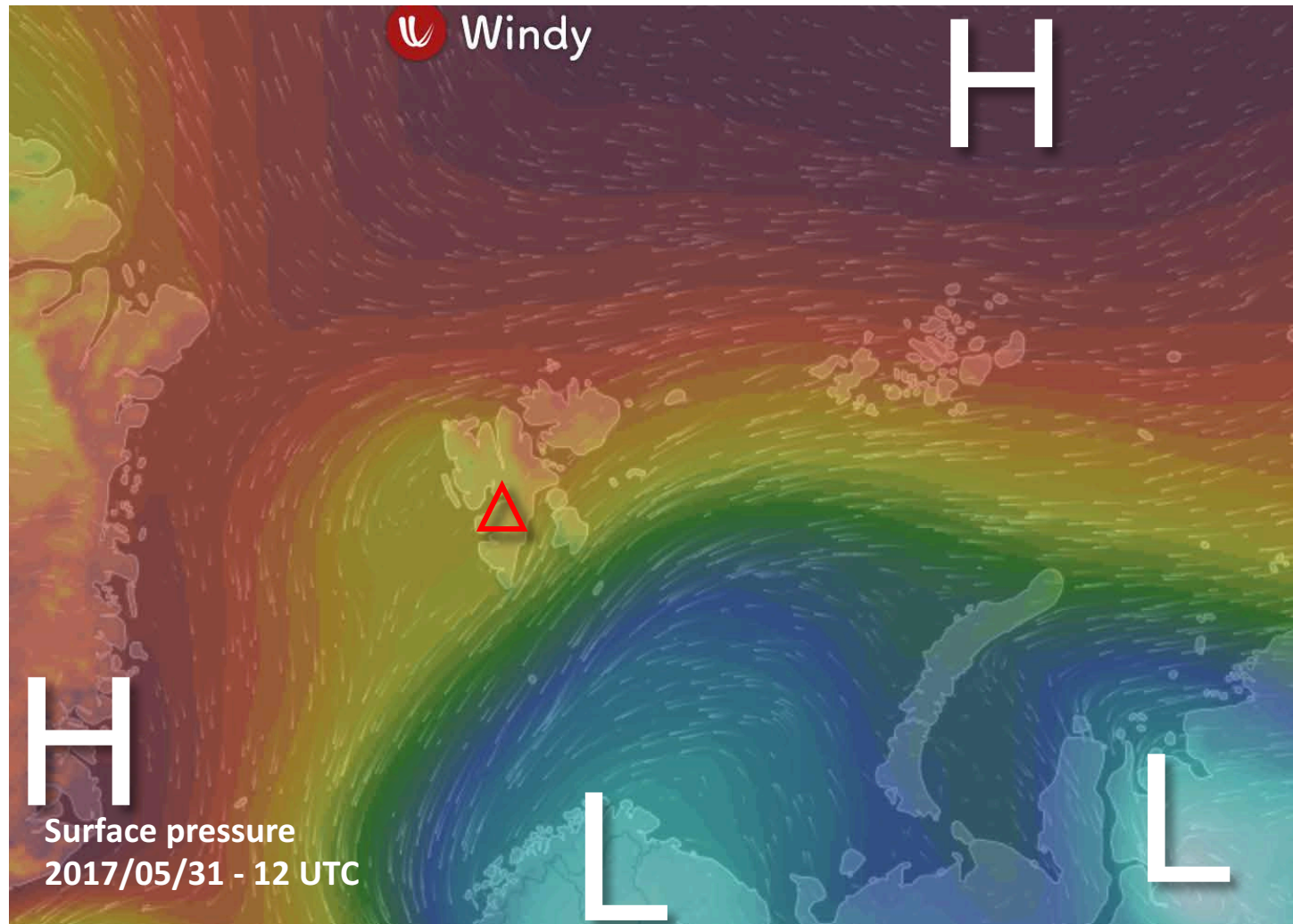


Daten: GFS
(C) Wetterzentrale
www.wetterzentrale.de

Outlook

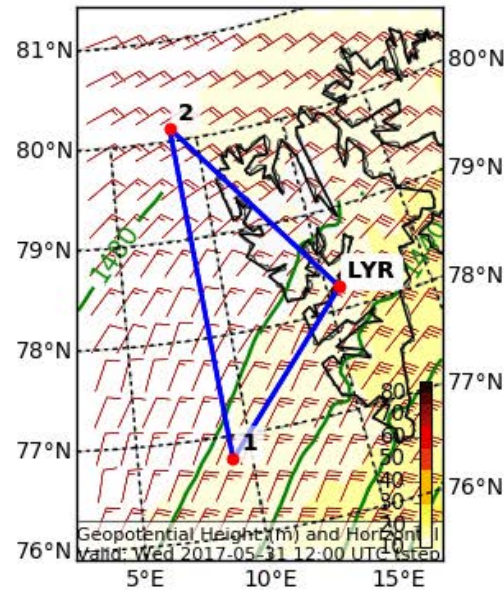
Wed 31 May – Thu 1 June 2017

General Situation Wed 31 May 2017



Wind, After Tomorrow 12 UTC

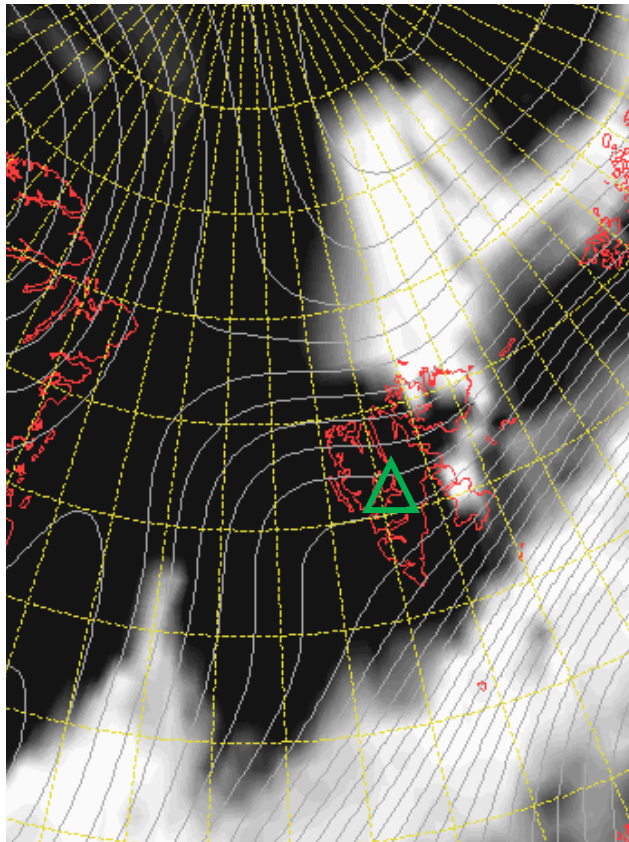
Geopotential Height (m) and Horizontal Wind (m/s) (Wind Speed 10-85 m
Valid: Wed 2017-05-31 12:00 UTC (step 60 hrs from Mon 2017-05-29 00:00 UTC)



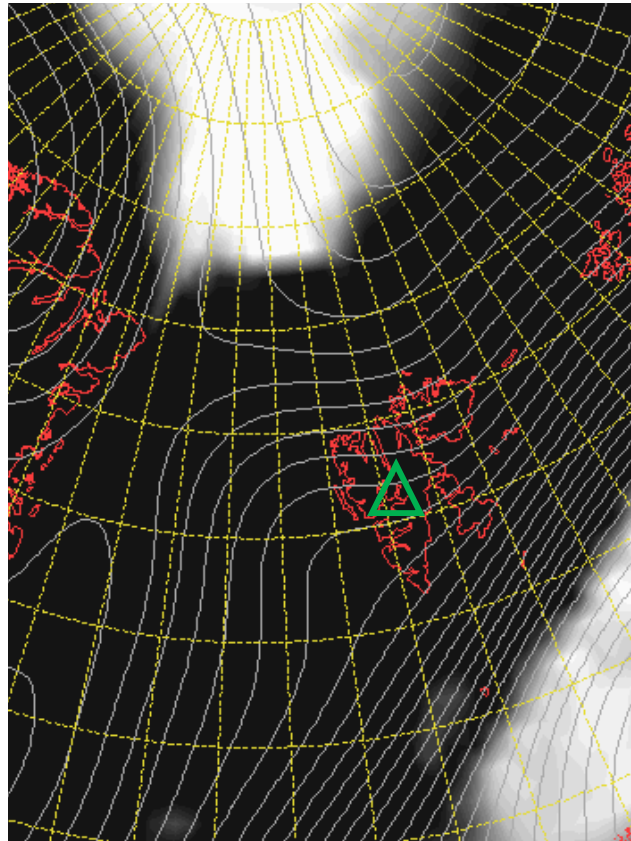
EPSG:77790000

Cloud Cover 31 May 2017 @ 12 UTC

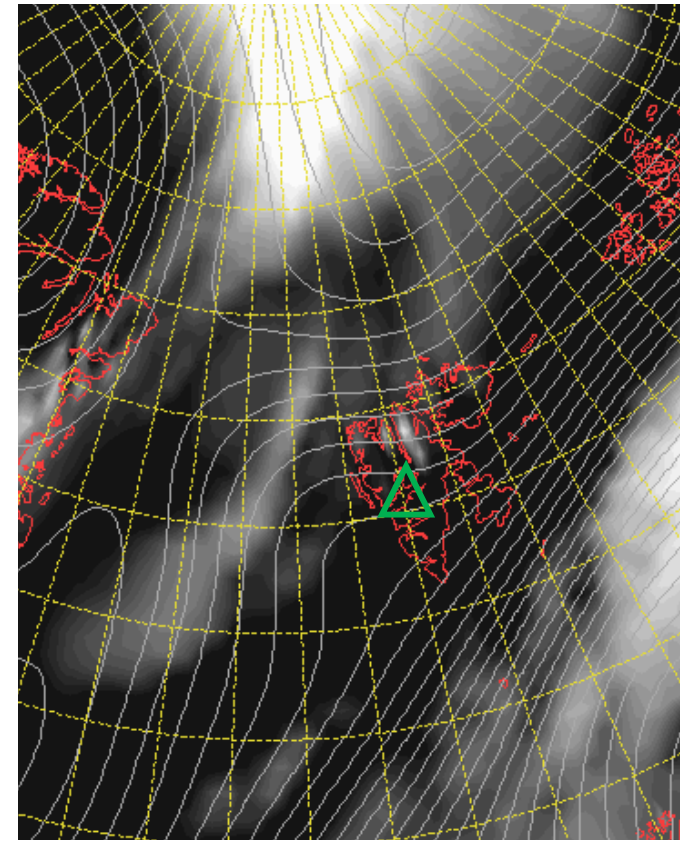
L



M



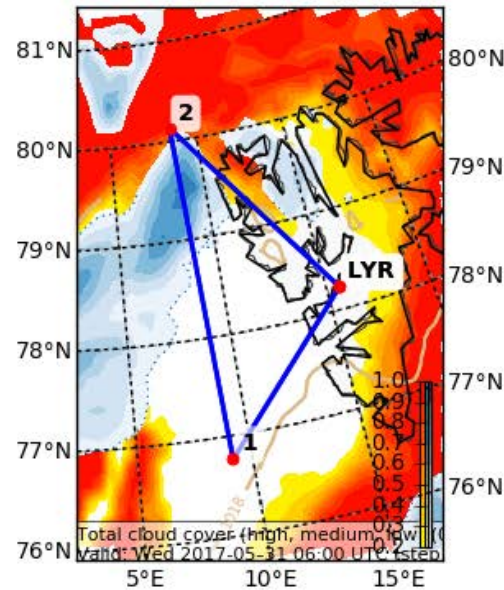
H



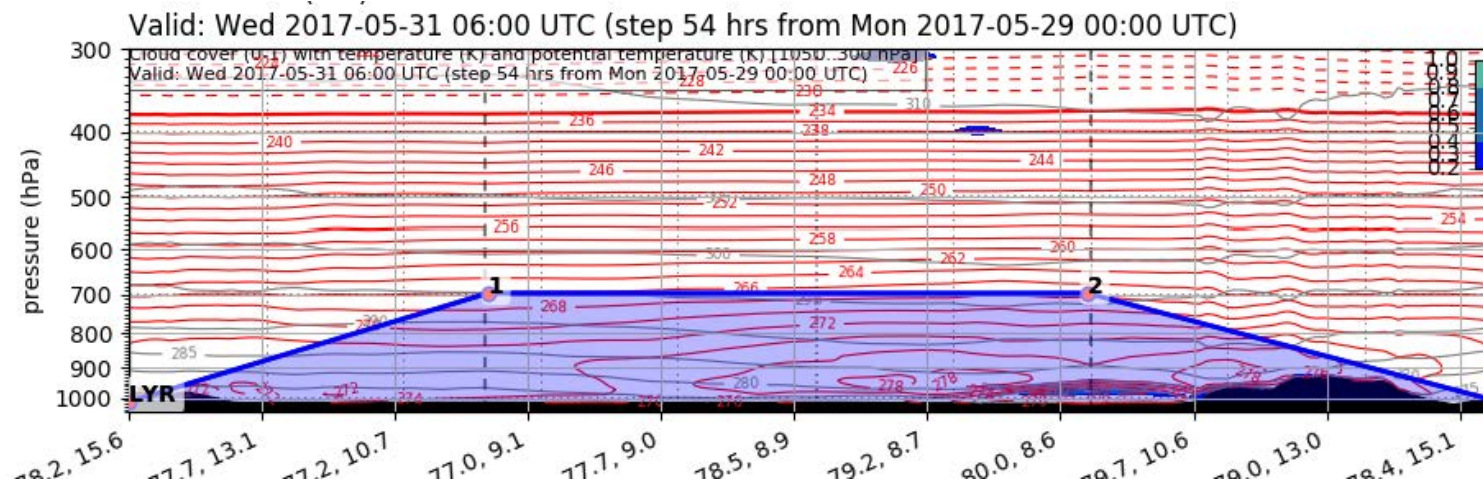
Forecast After Tomorrow 06 UTC

Cloud Cover (0-1) (Total Cloud Cover)

Valid: Wed 2017-05-31 06:00 UTC (step 54 hrs from Mon 2017-05-29 00:00 UTC)



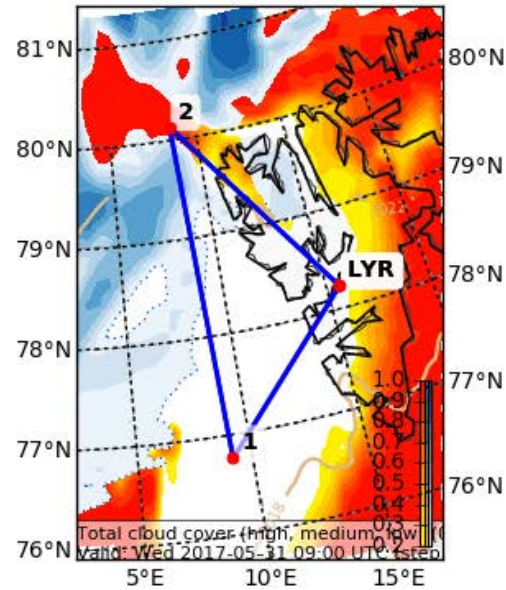
EPSG:77790000



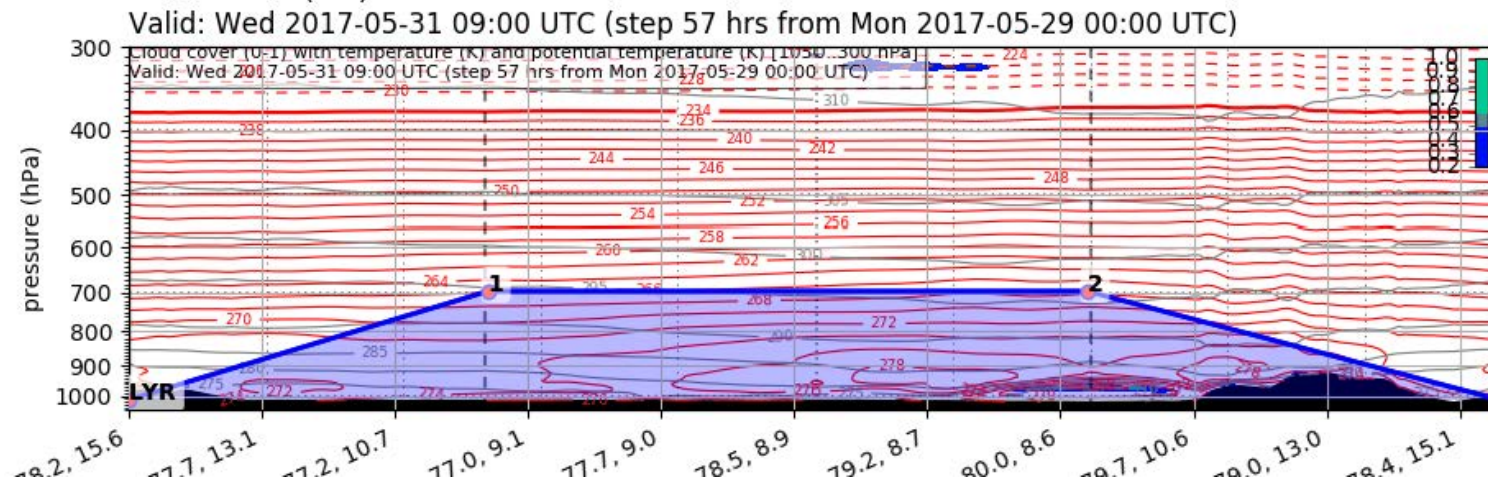
Forecast After Tomorrow 09 UTC

Cloud Cover (0-1) (Total Cloud Cover)

Valid: Wed 2017-05-31 09:00 UTC (step 57 hrs from Mon 2017-05-29 00:00 UTC)



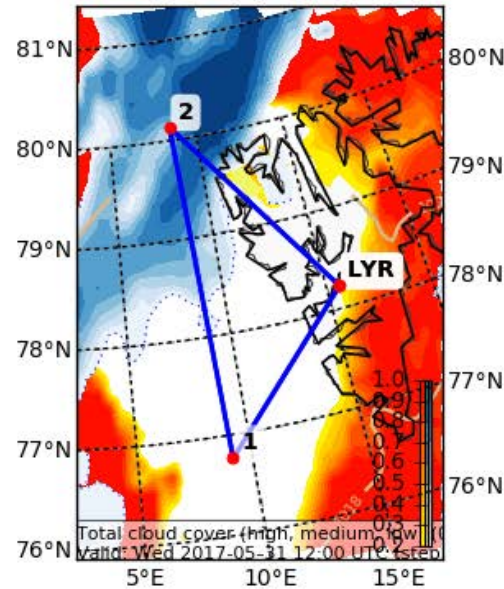
EPSG:77790000



Forecast After Tomorrow 12 UTC

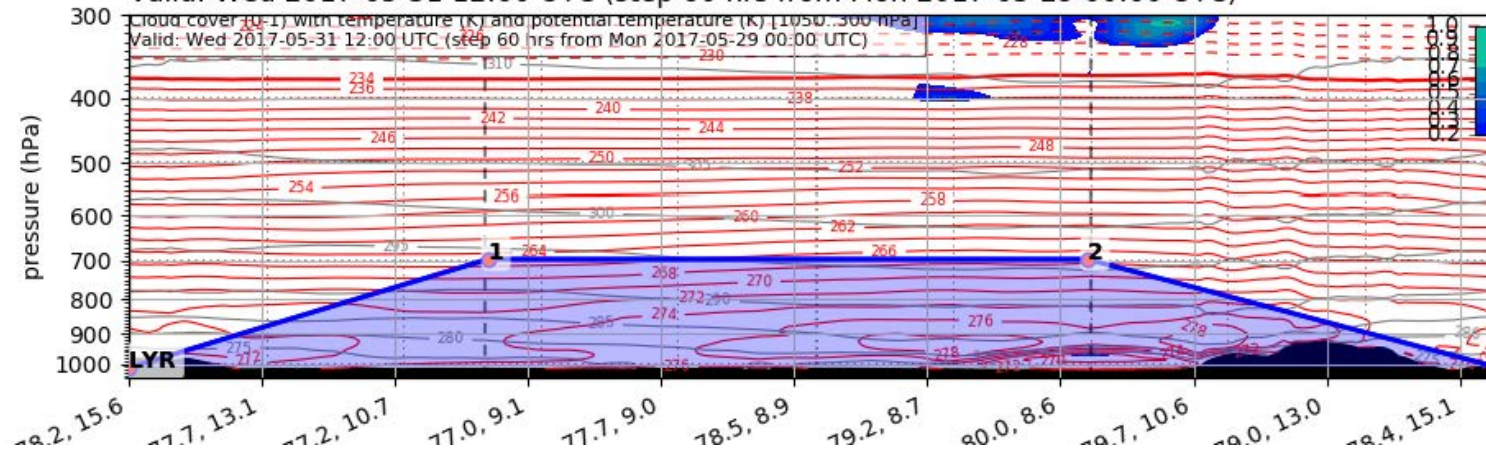
Cloud Cover (0-1) (Total Cloud Cover)

Valid: Wed 2017-05-31 12:00 UTC (step 60 hrs from Mon 2017-05-29 00:00 UTC)



EPSG:77790000

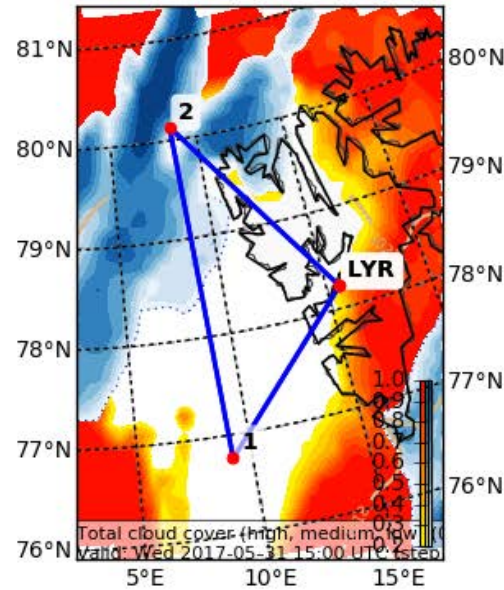
Valid: Wed 2017-05-31 12:00 UTC (step 60 hrs from Mon 2017-05-29 00:00 UTC)



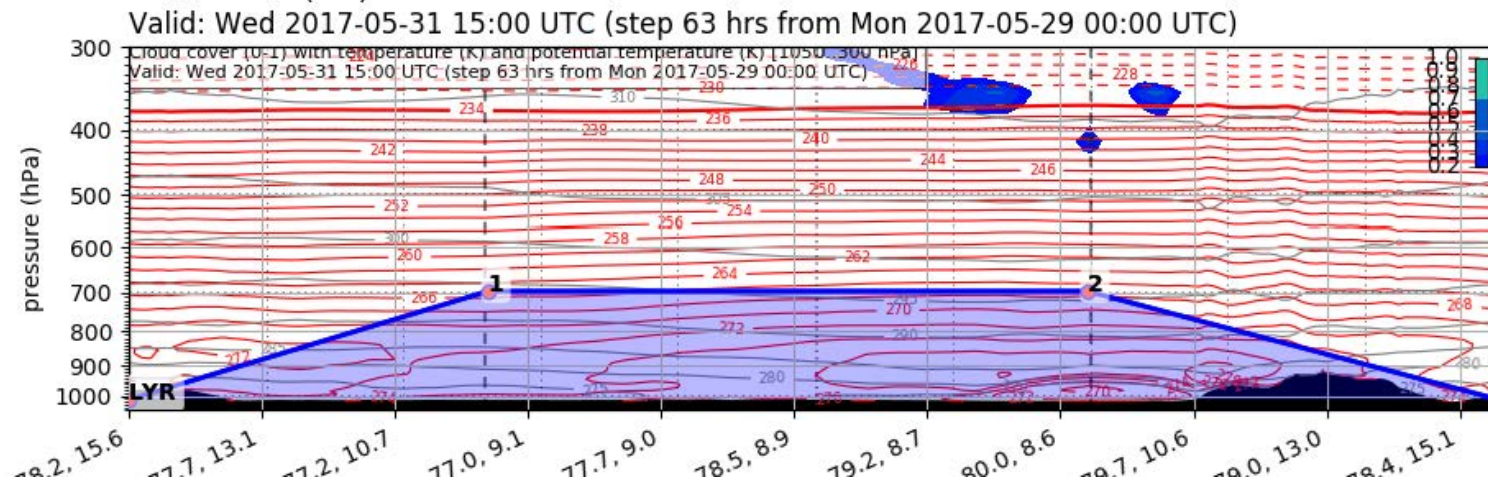
Forecast After Tomorrow 15 UTC

Cloud Cover (0-1) (Total Cloud Cover)

Valid: Wed 2017-05-31 15:00 UTC (step 63 hrs from Mon 2017-05-29 00:00 UTC)



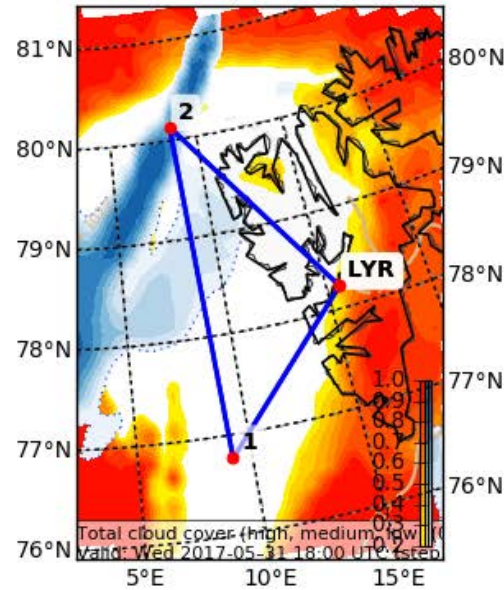
EPSG:77790000



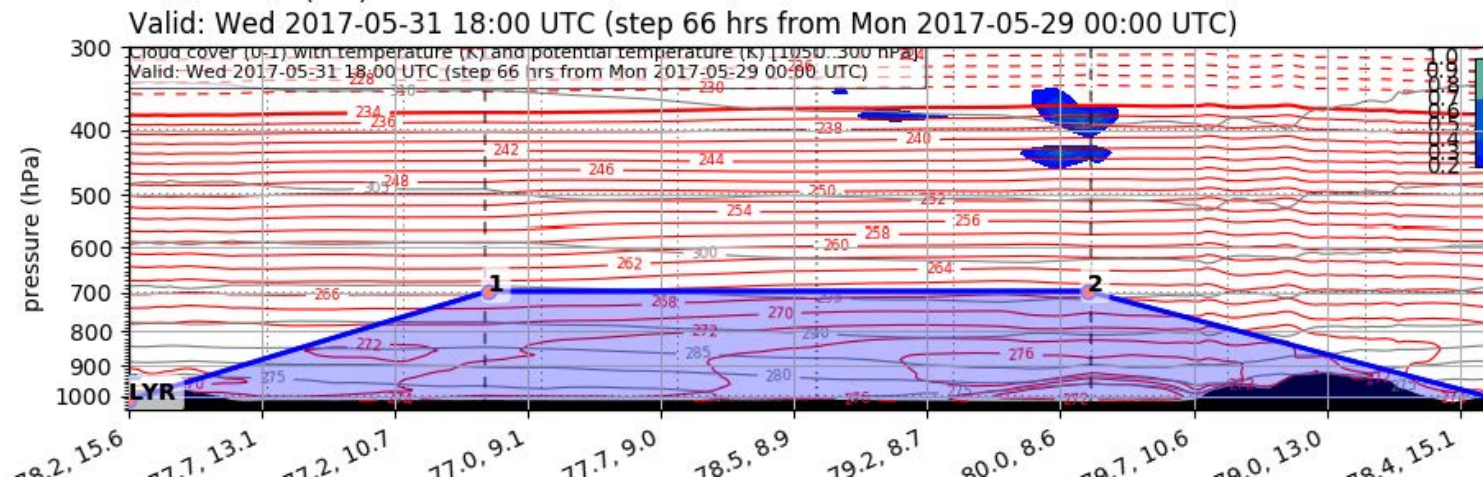
Forecast After Tomorrow 18 UTC

Cloud Cover (0-1) (Total Cloud Cover)

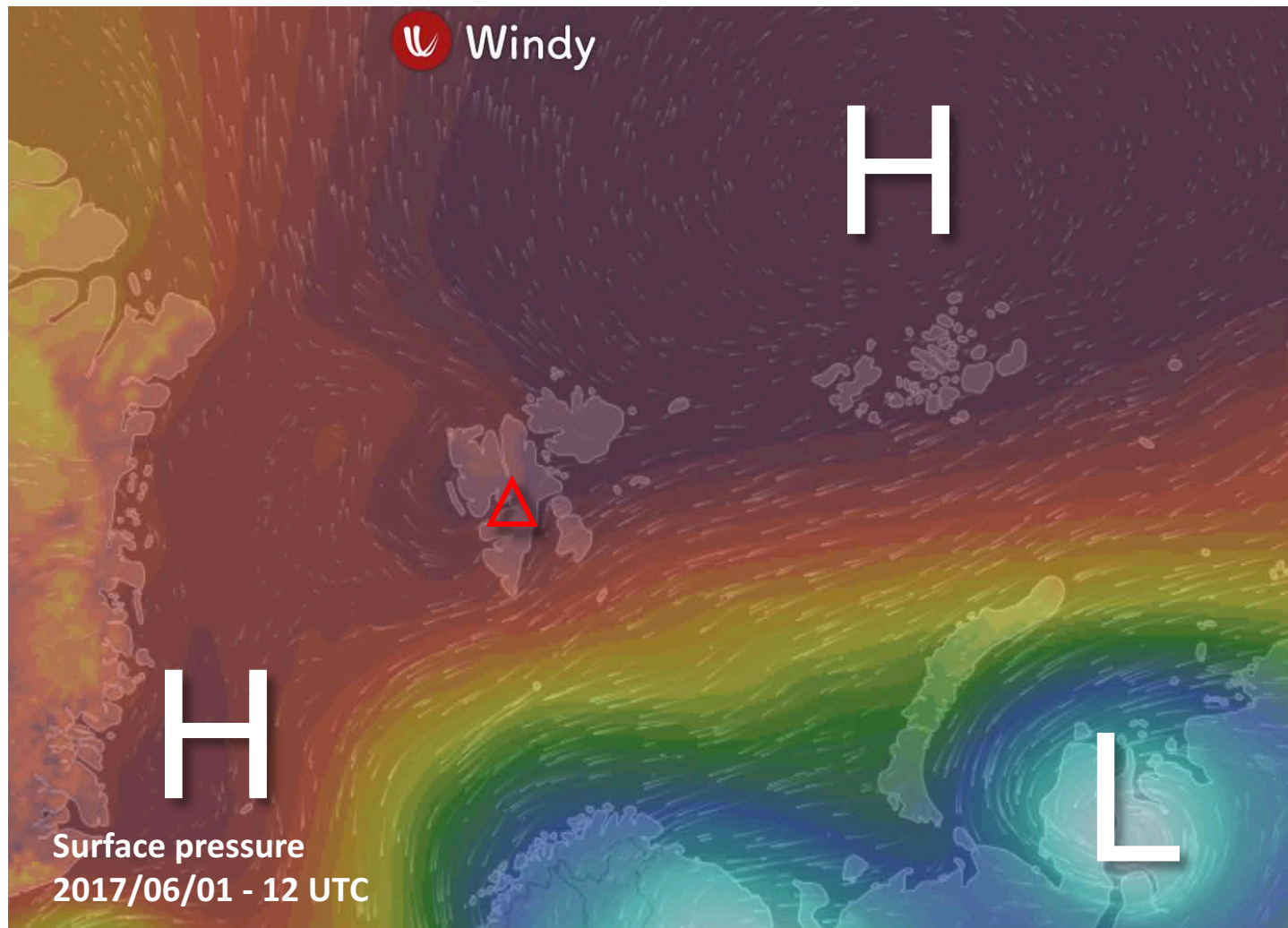
Valid: Wed 2017-05-31 18:00 UTC (step 66 hrs from Mon 2017-05-29 00:00 UTC)



EPSG:77790000

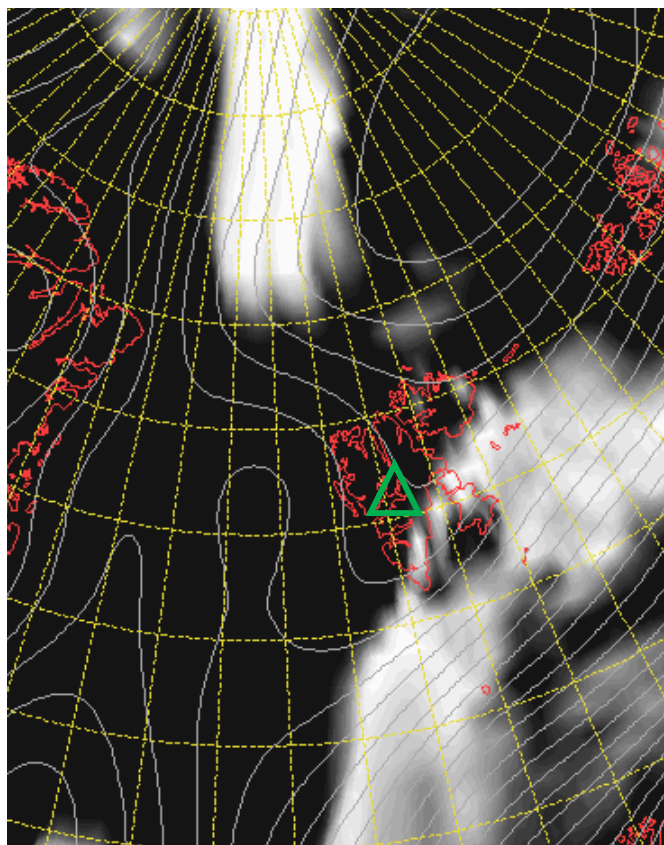


General Situation Thu 1 June 2017

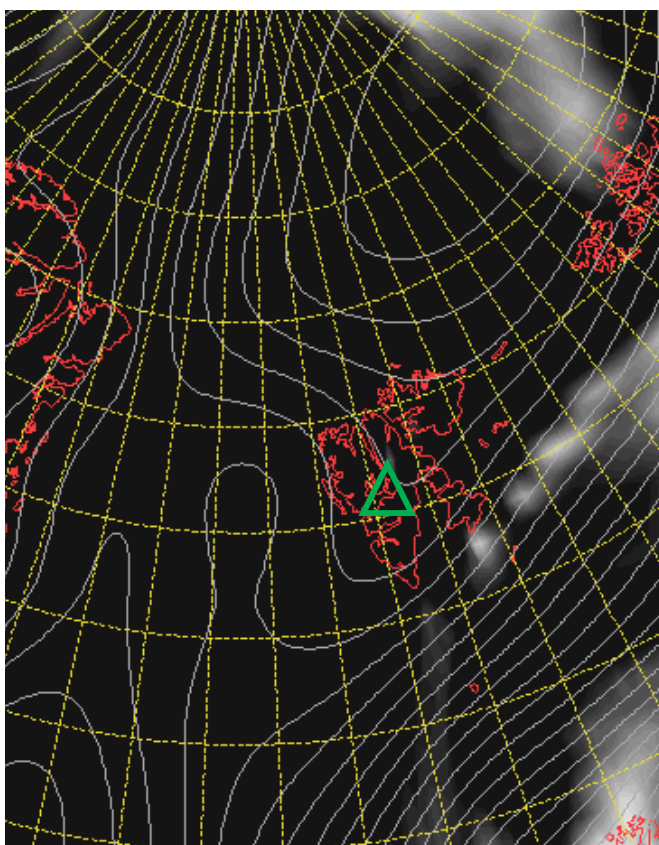


Cloud Cover 1 June 2017 @ 12 UTC

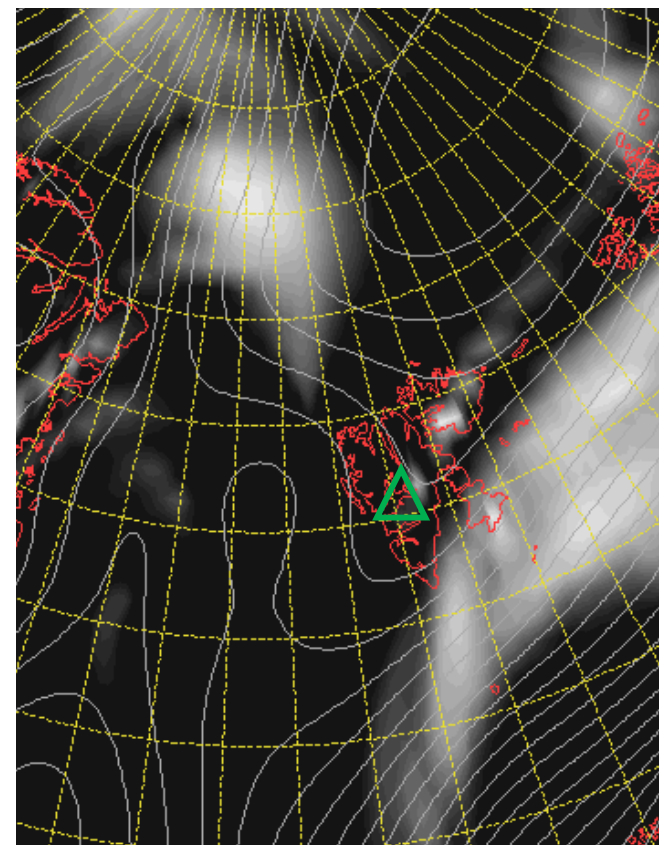
L



M



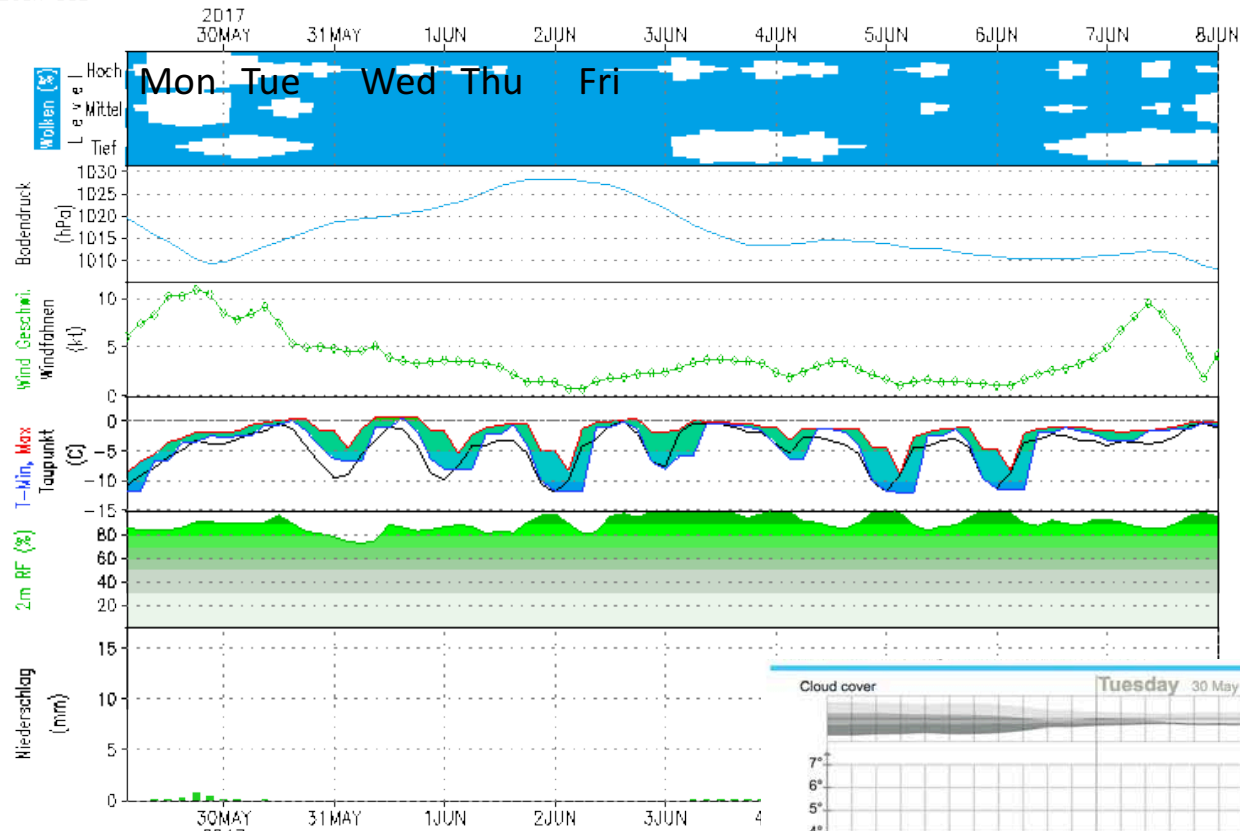
H



GFS – Meteogramm

Lon: 15.63 Lat: 78.22 Hgt: 331m

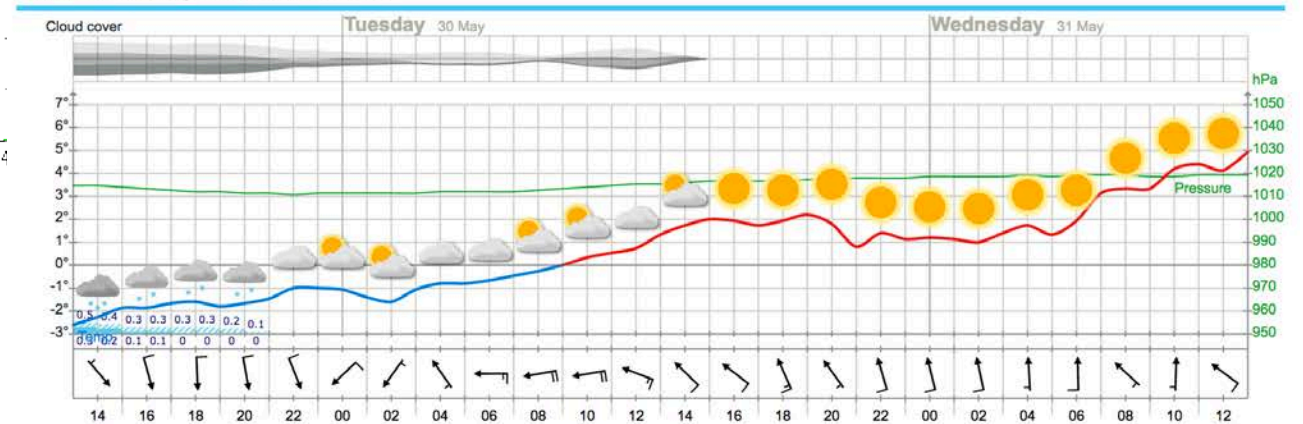
Lauf: 00Z



Heute kein Sonnenaufgang
Heute kein Sonnenuntergang

Outlook – Meteogram

YR.no



Sounding Longyearbyen 29 May 2017 @ 12 UTC

