

Weather briefing

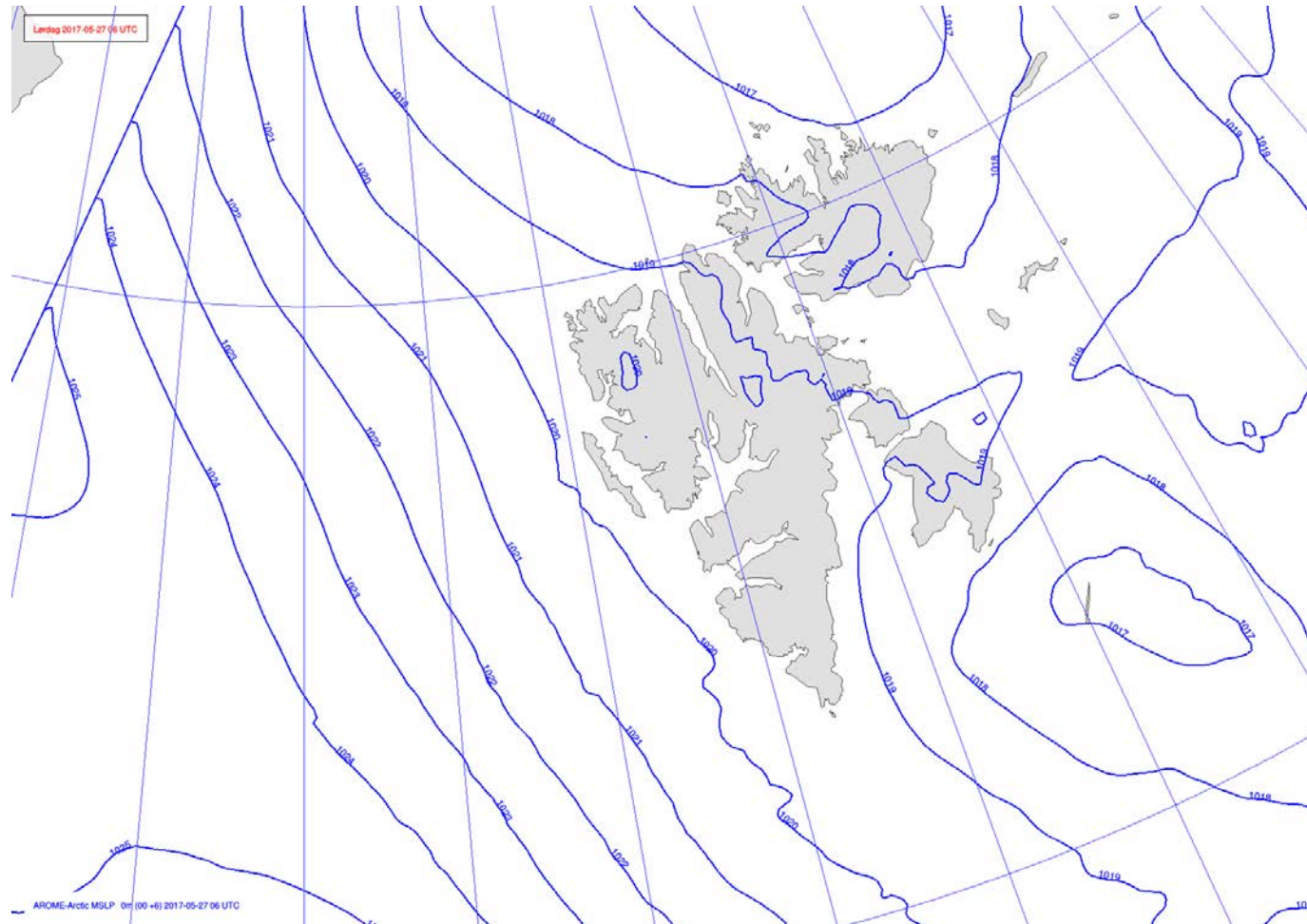
ACLOUD Longyearbyen, Svalbard

Sat 27 May 2017 – **Sun 28 May** – Tue 30 May 2017

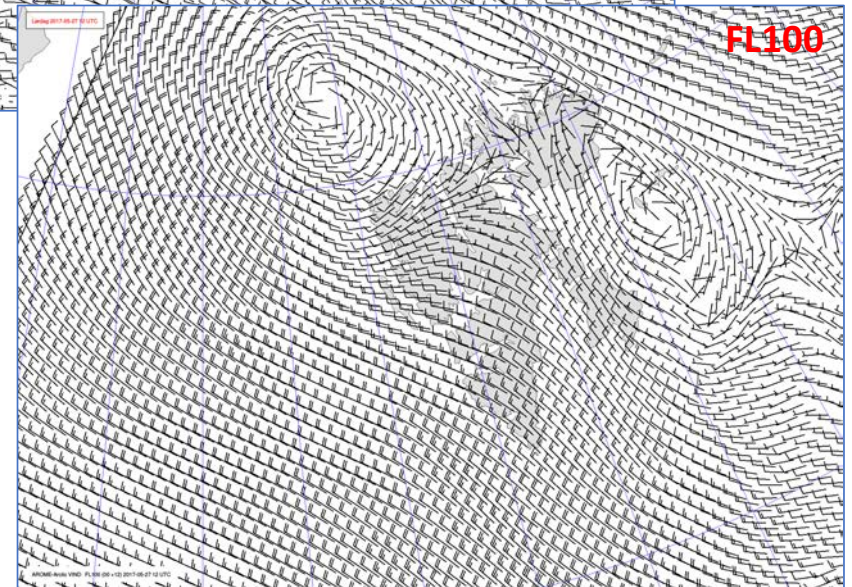
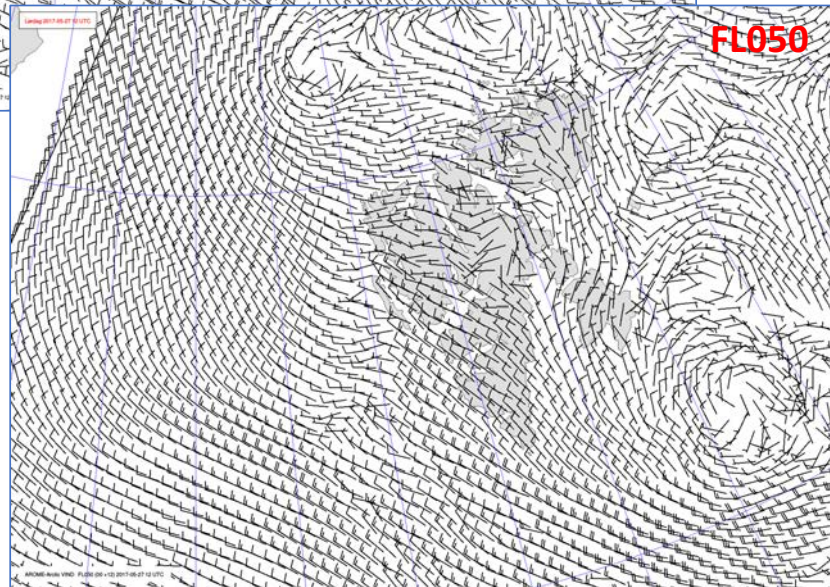
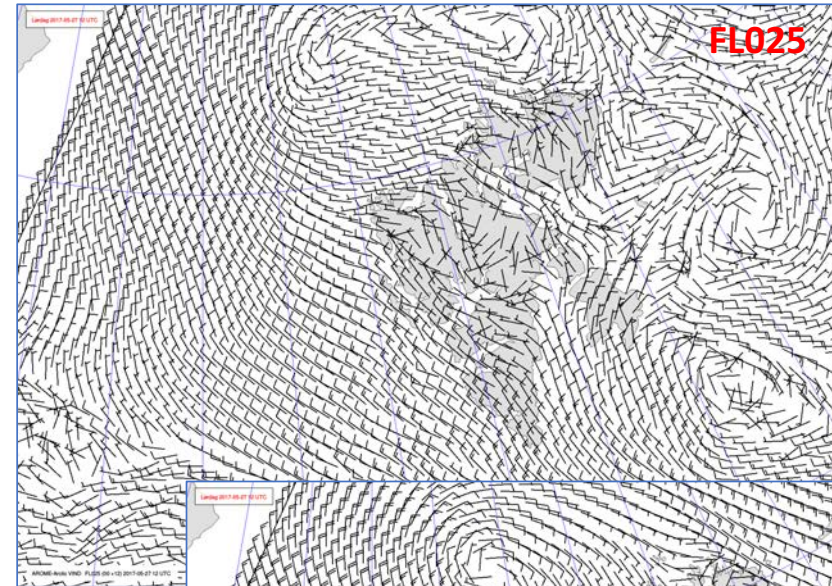
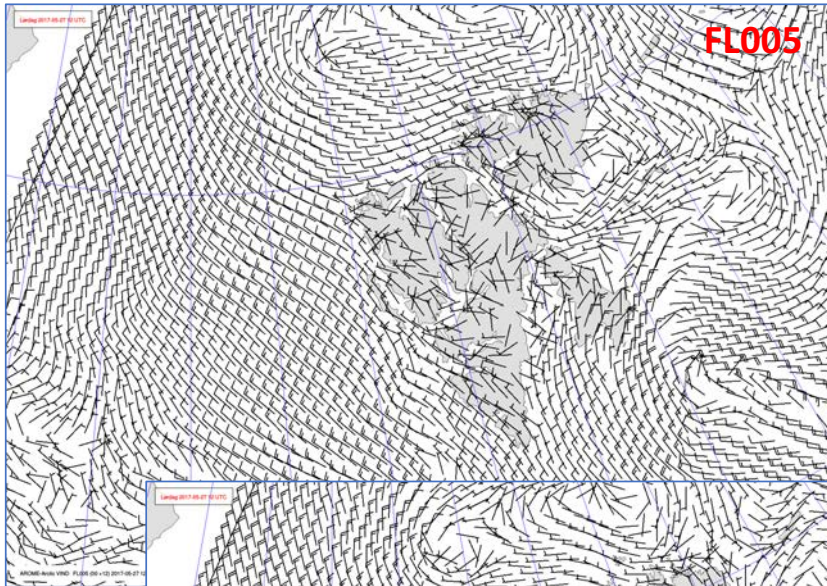
Summary

A weakening low northeast of Spitsbergen directs a northwesterly airflow west and northwest of Svalbard – on-going, but weaker cold-air-outbreak.

Analysis 27 May 2017 @ 00 UTC

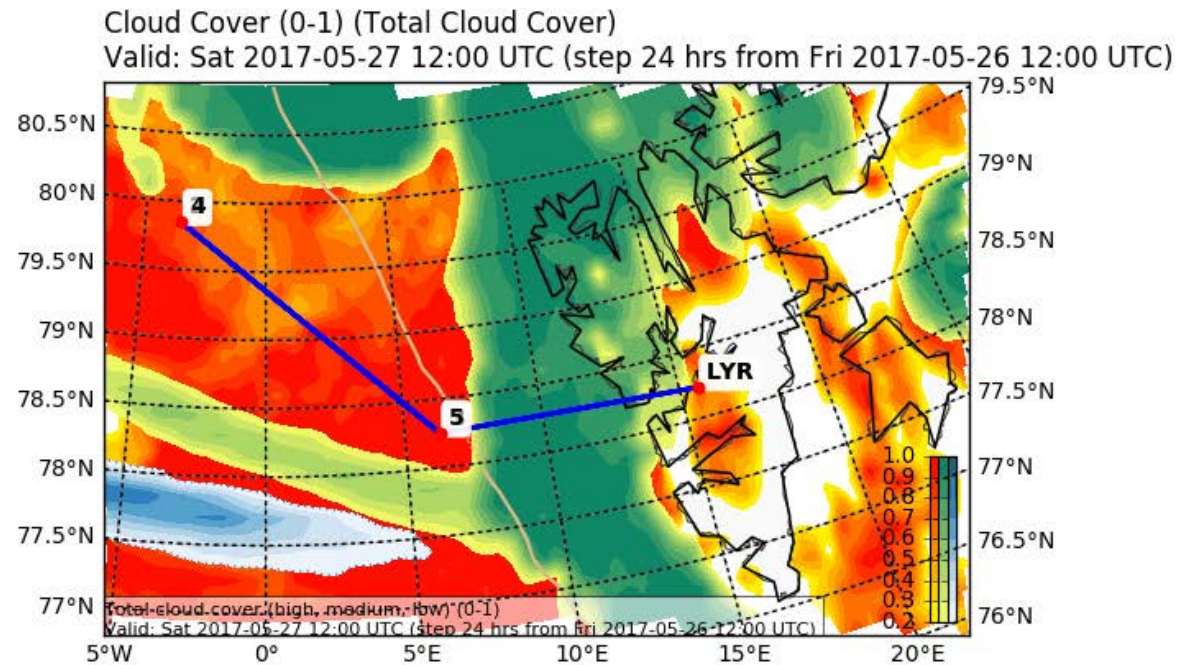


Wind 27 May 2017 @ 12 UTC

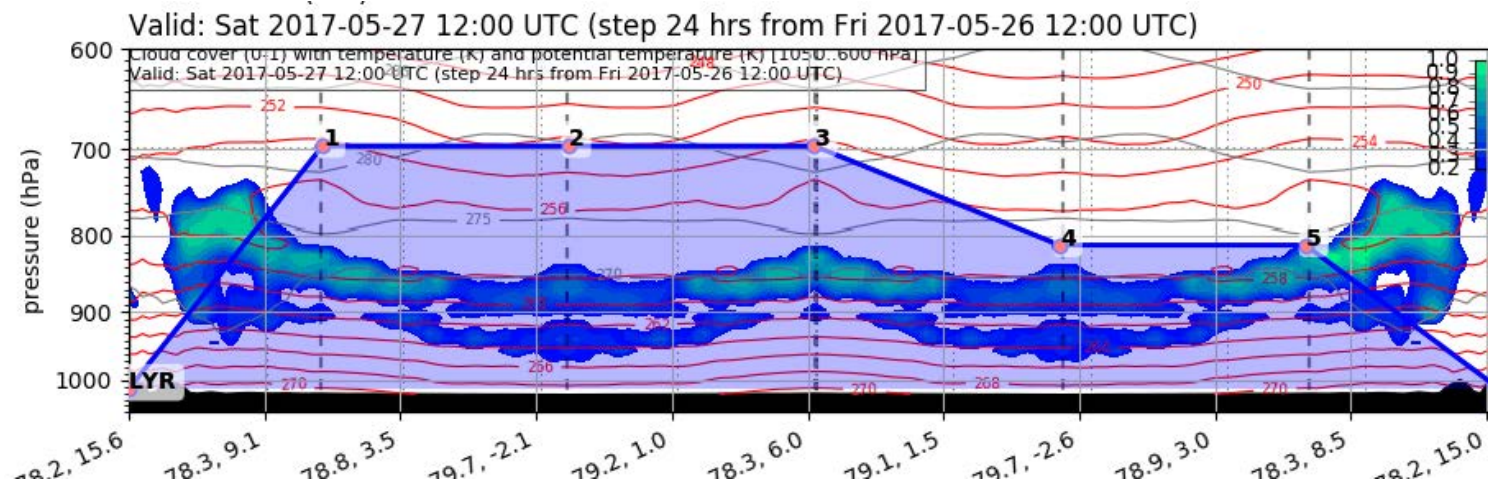


Clouds

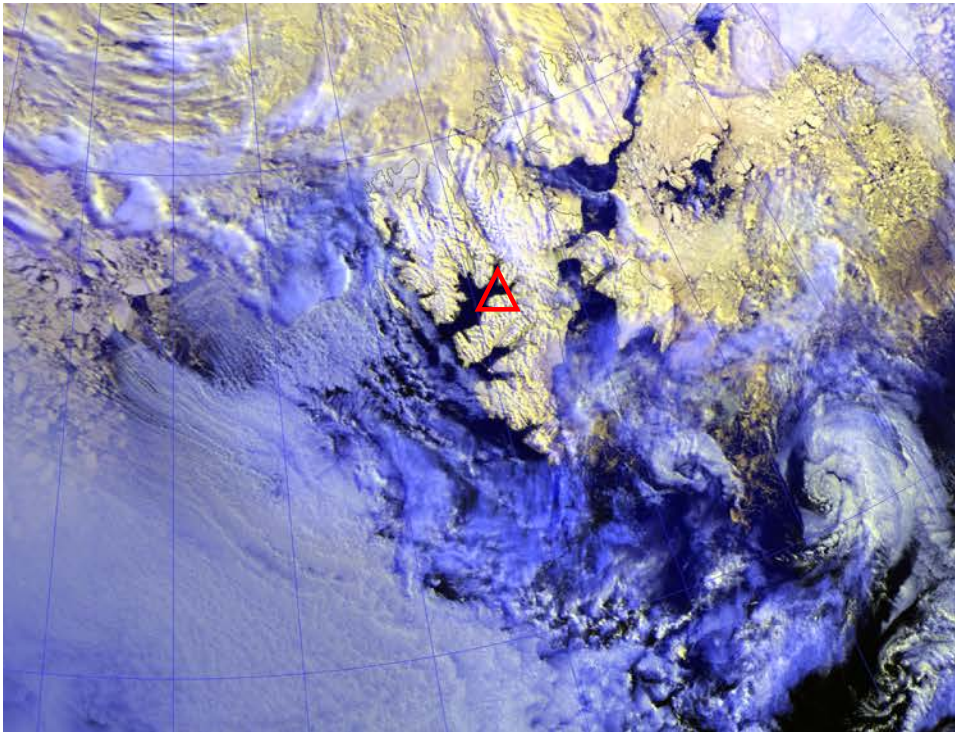
Today 12 UTC



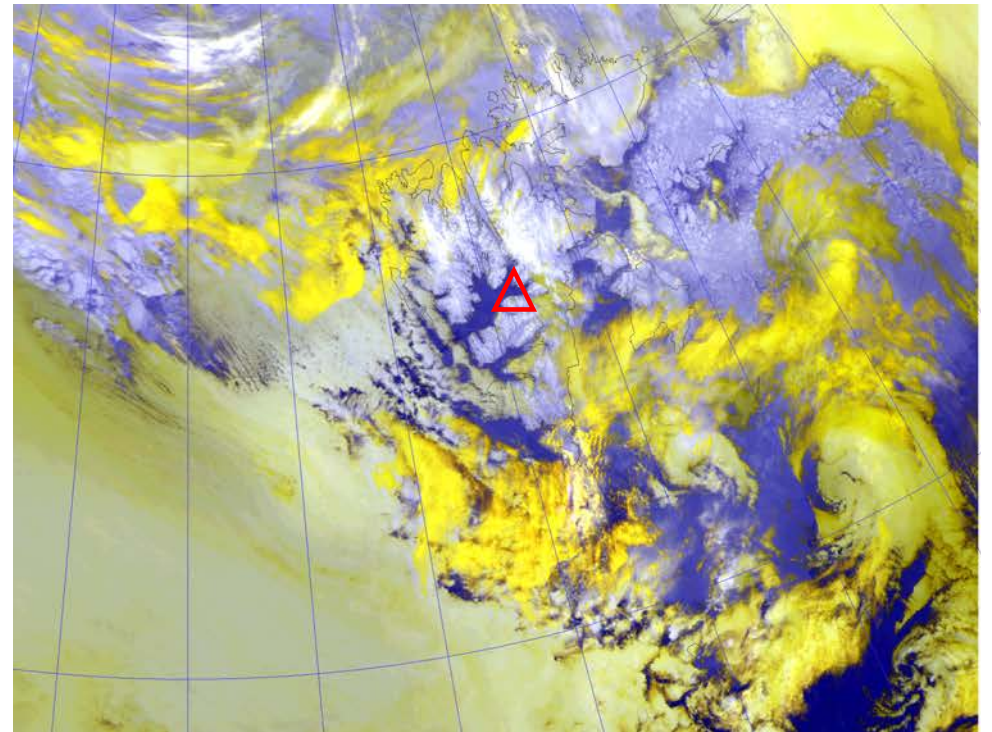
EPSG:77790000



NOAA-19 27 May 2017 @ 0405 UTC

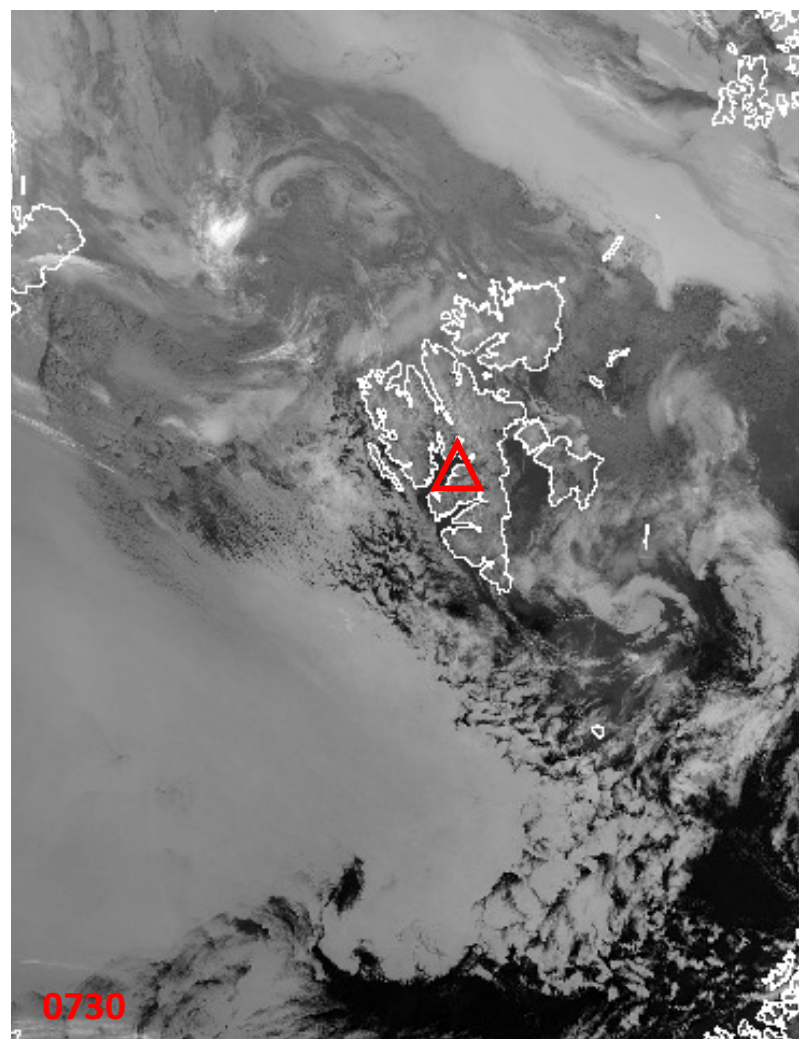


10.8 μm

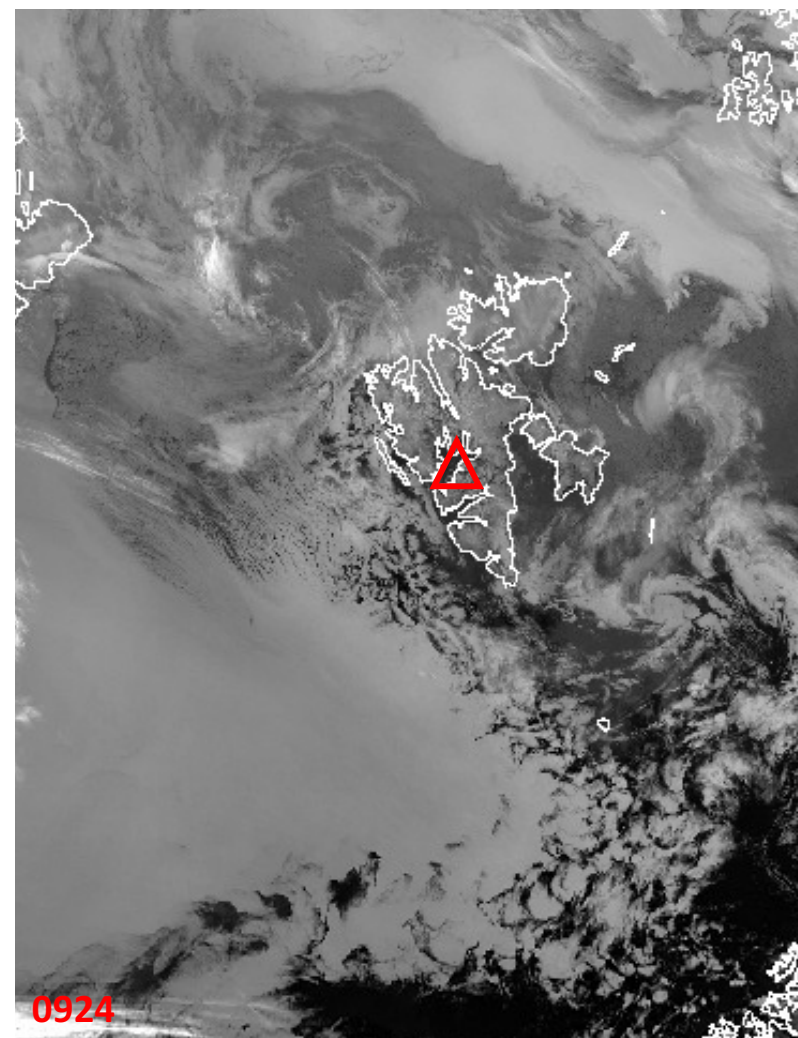


IR, Ch 5+4+3

NOAA-19 27 May 2017 @ 0730 & 0912 UTC

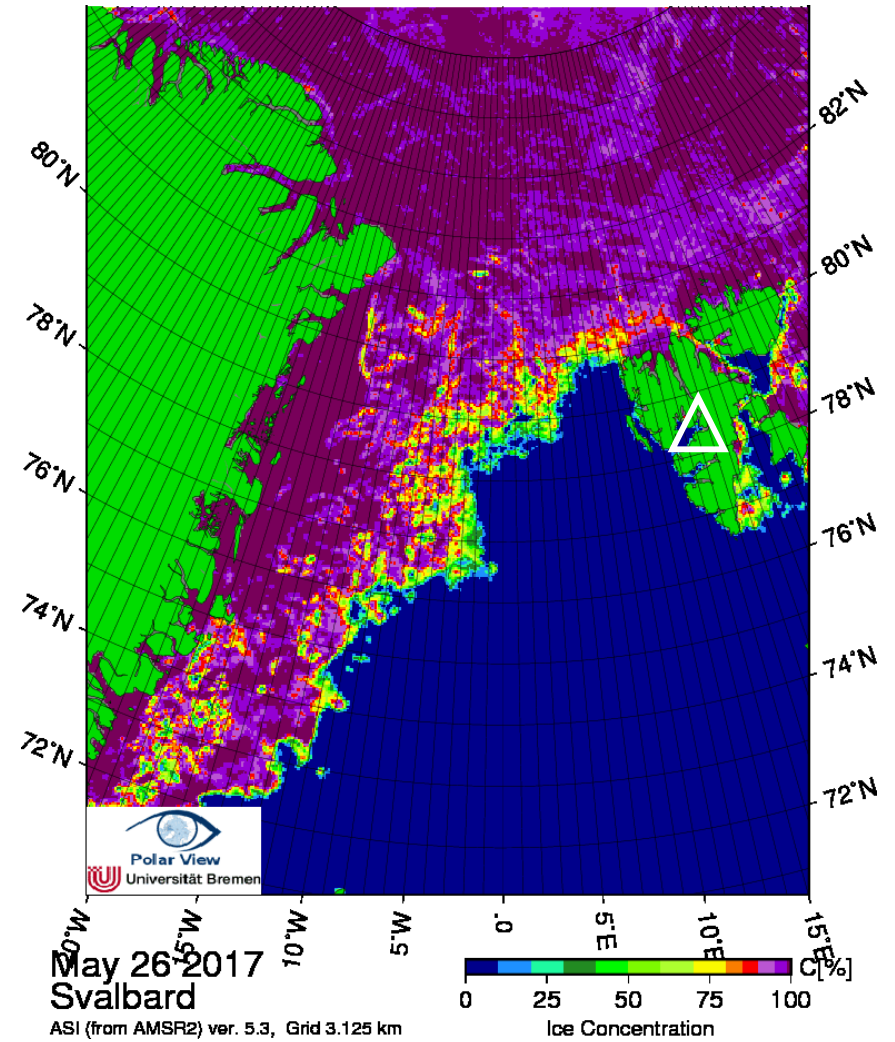
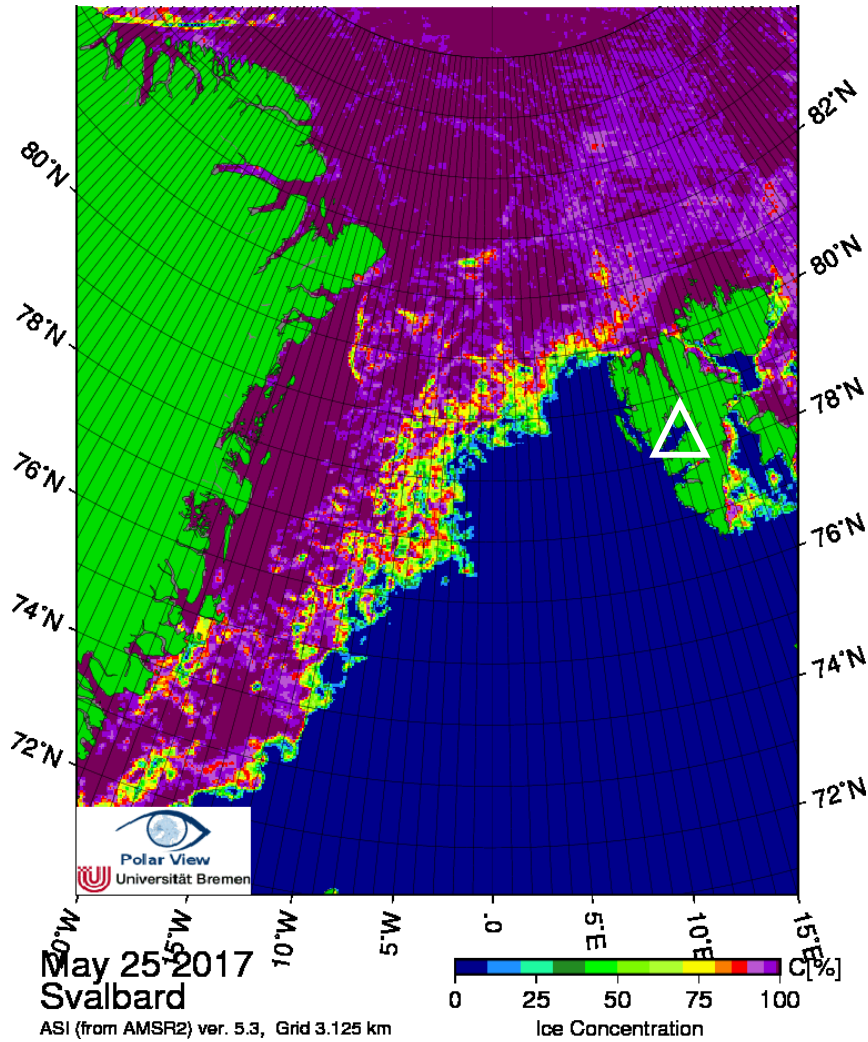


10.8 μm



10.8 μm

Arctic sea ice 25 & 26 May 2017



Flight Day

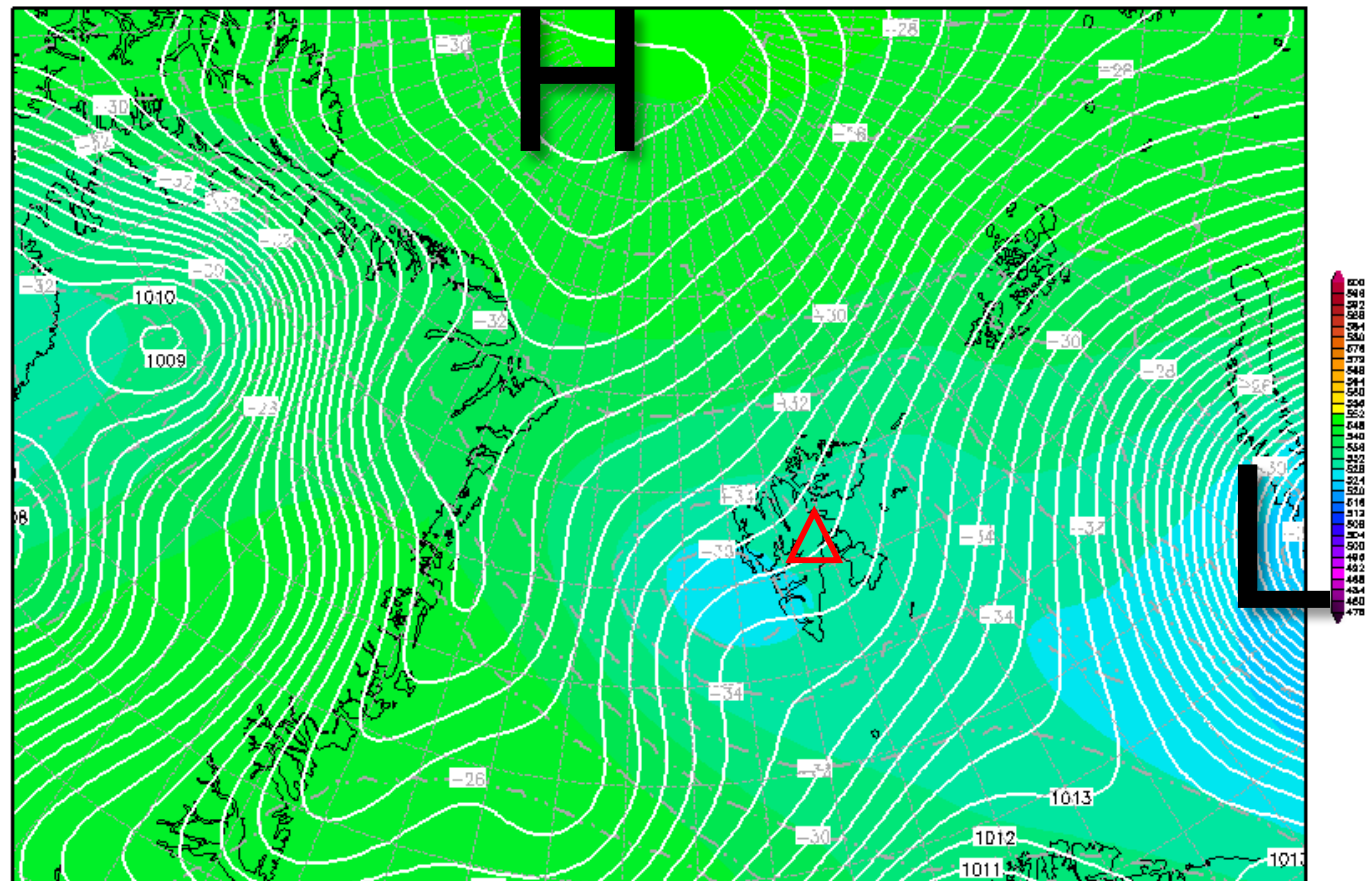
Sun 28 May 2017

500-hPa Geopotential 28 May 2017 @ 12 UTC

Init : Sat,27MAY2017 00Z

Valid: Sun,28MAY2017 12Z

500 hPa Geopot.(gpdm), T (C) und Bodendr. (hPa)

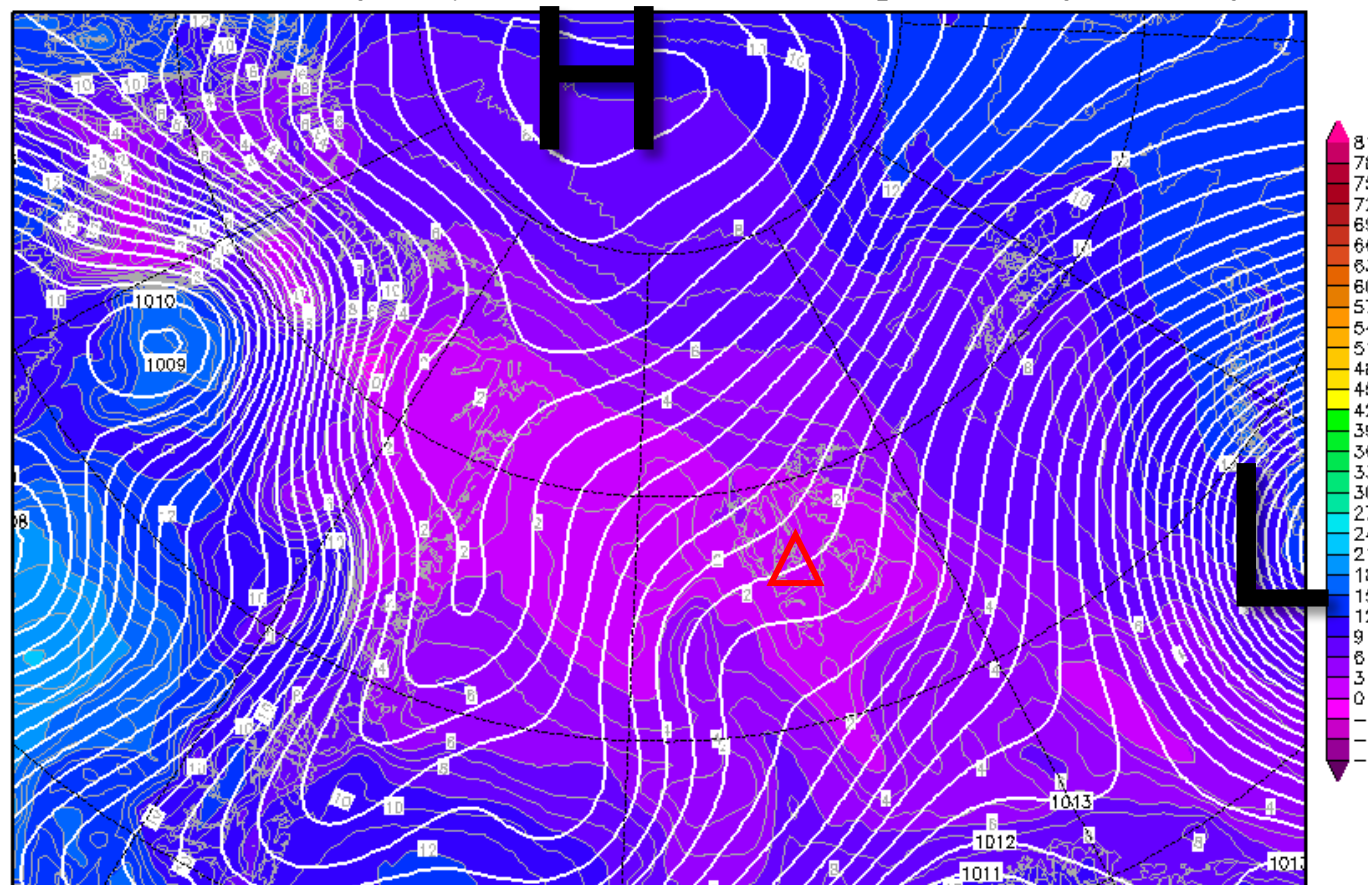


850-hPa Theta Equiv. 28 May 2017 @ 12 UTC

Init : Sat,27MAY2017 00Z

Valid: Sun,28MAY2017 12Z

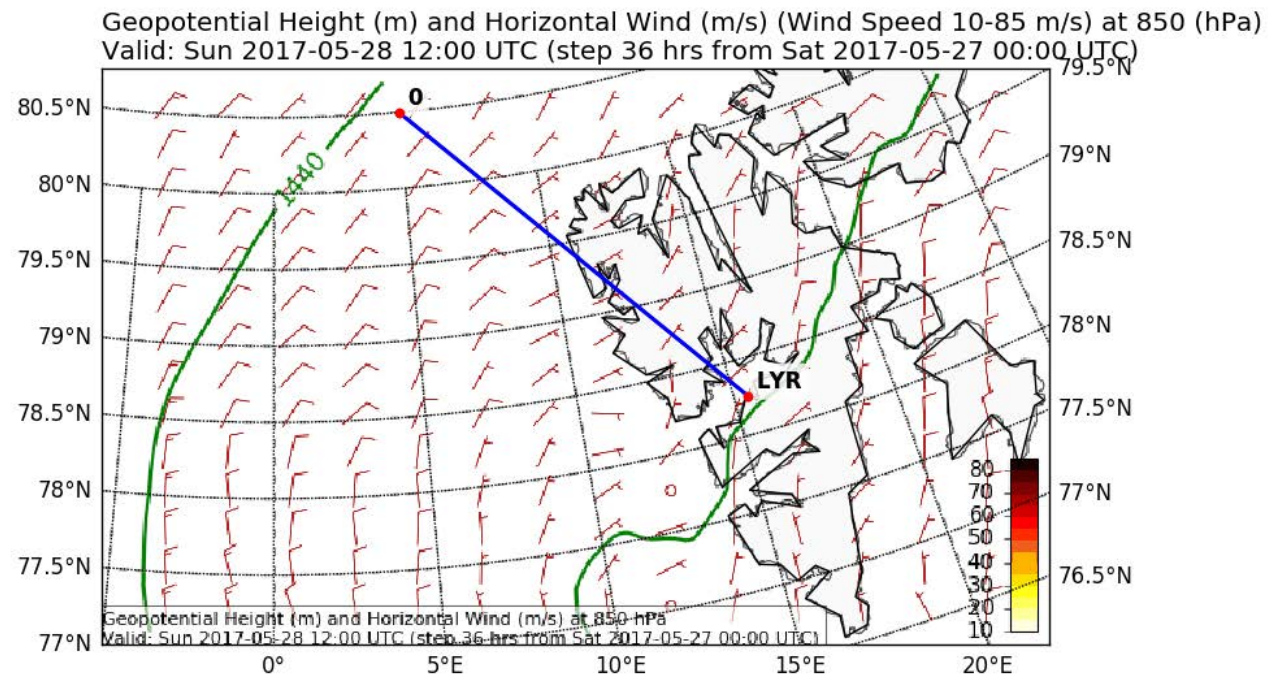
Bodendruck (hPa) und 850 hPa Aeq.Pot.T. (Grad C)



Daten: GFS-Modell des amerikanischen Wetterdienstes
(C) Wetterzentrale
www.wetterzentrale.de

Wind

Tomorrow 12 UTC



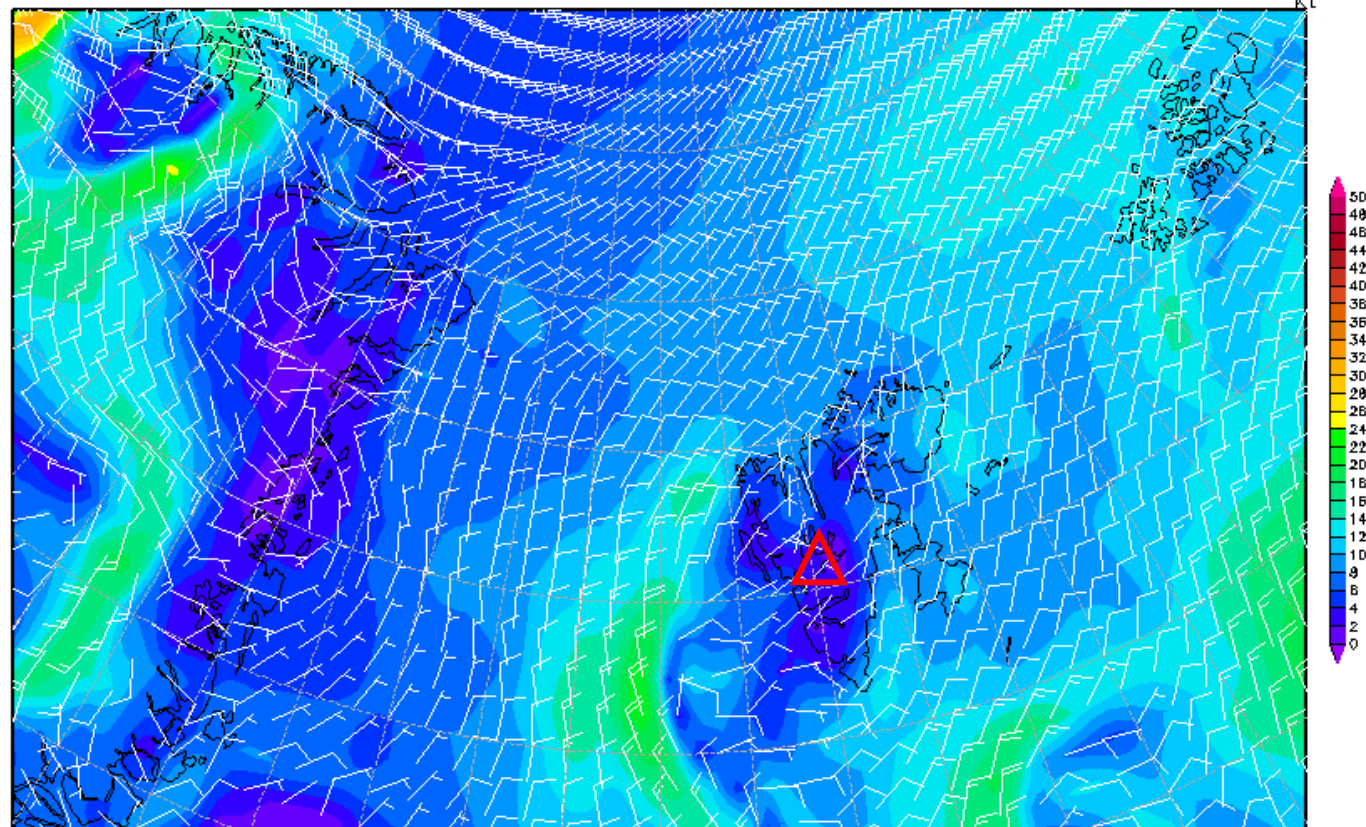
EPSG:77790000

10-m Wind 28 May 2017 @ 12 UTC

Init : Sat,27MAY2017 00Z

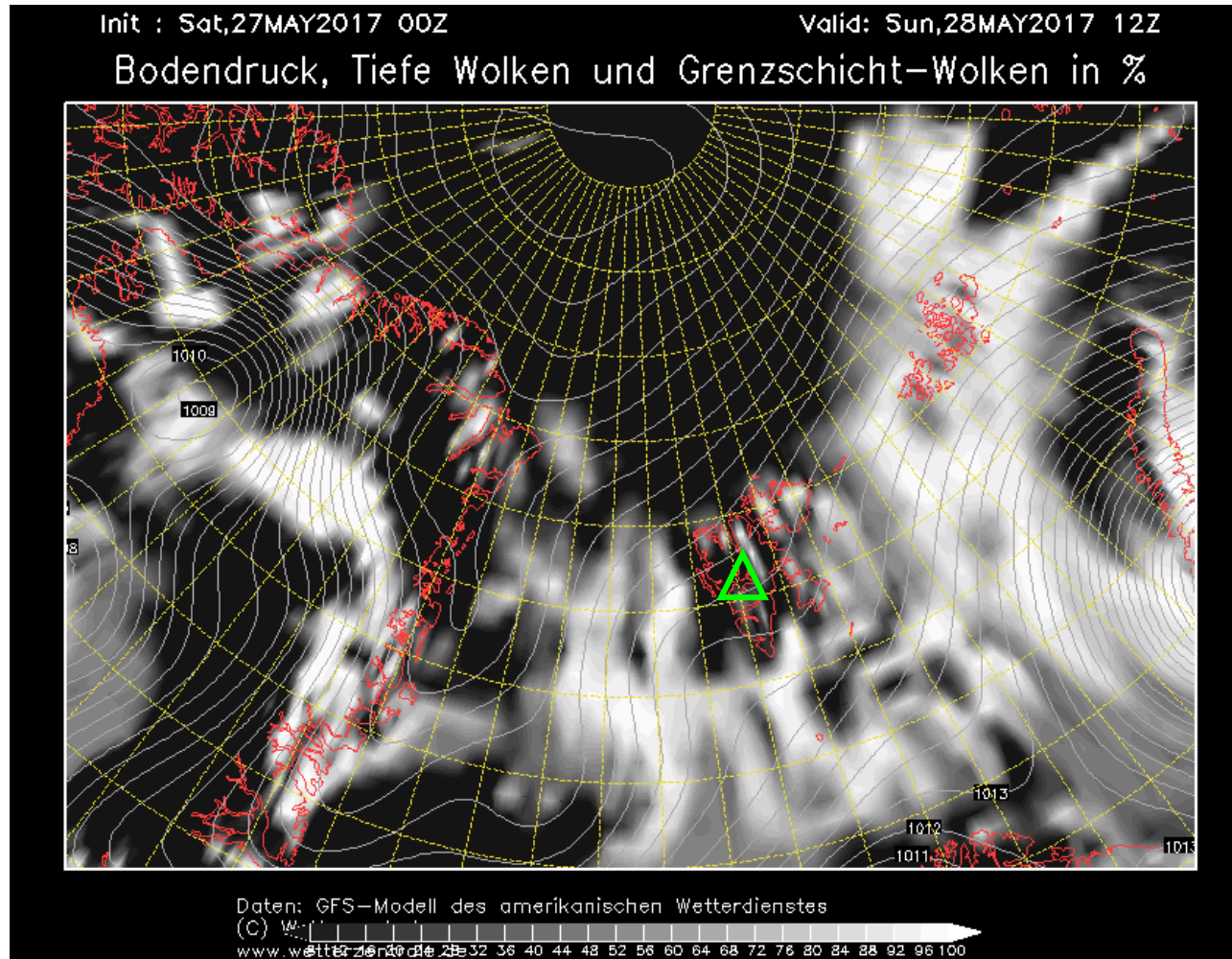
Valid: Sun,28MAY2017 12Z

10m Wind (kt)

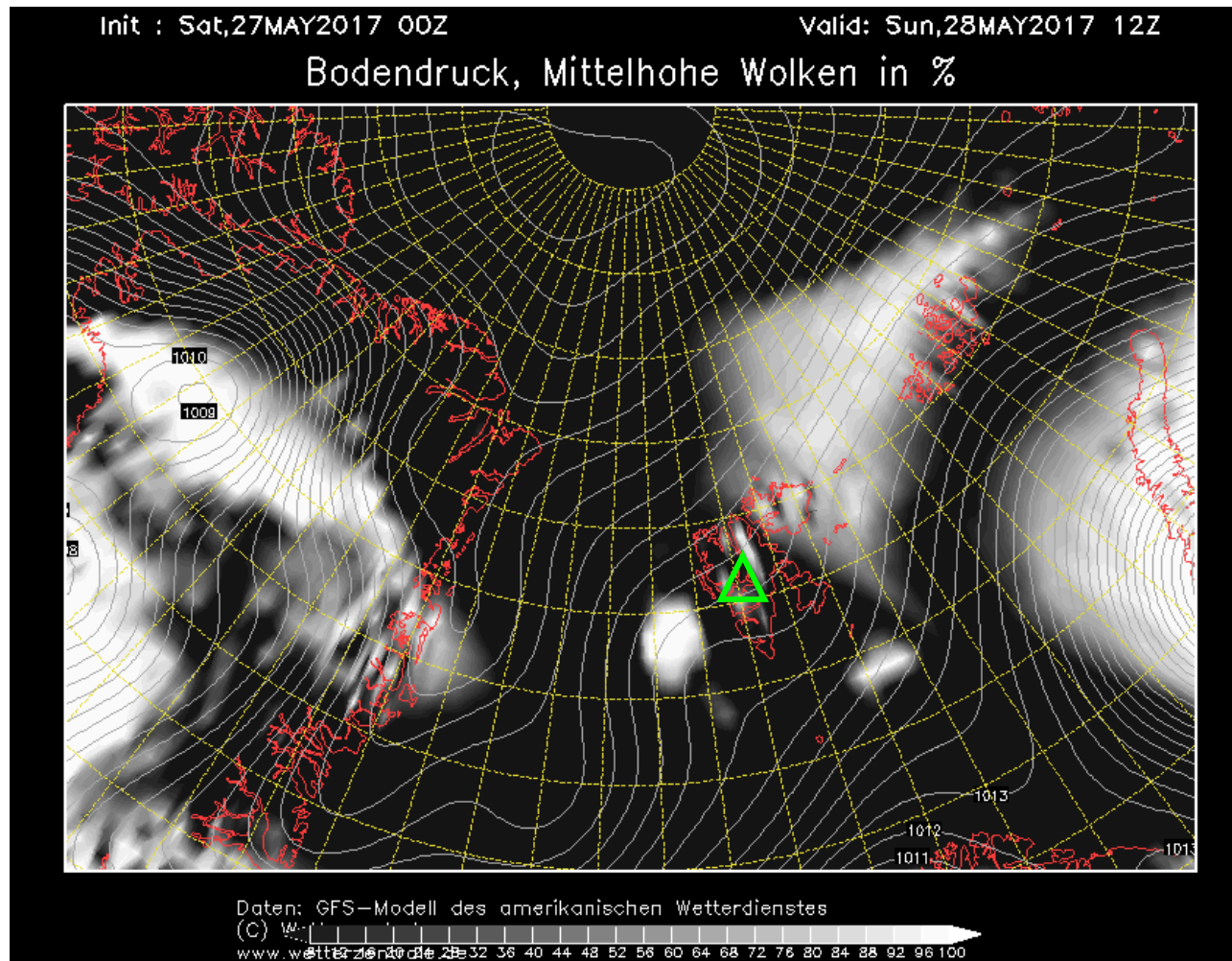


Daten: GFS-Modell des amerikanischen Wetterdienstes
(C) Wetterzentrale
www.wetterzentrale.de

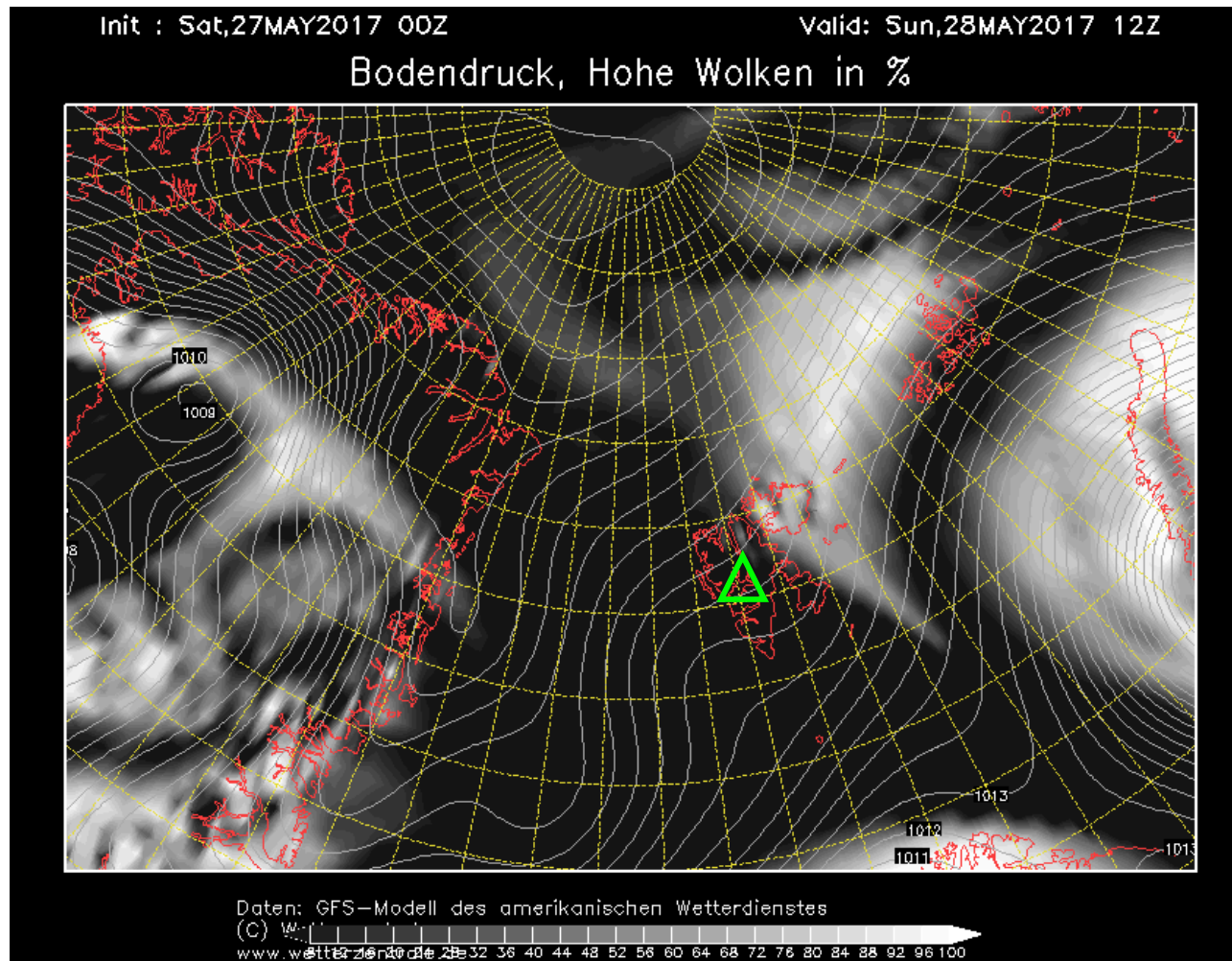
Low-level cloud cover 28 May 2017 @ 12 UTC



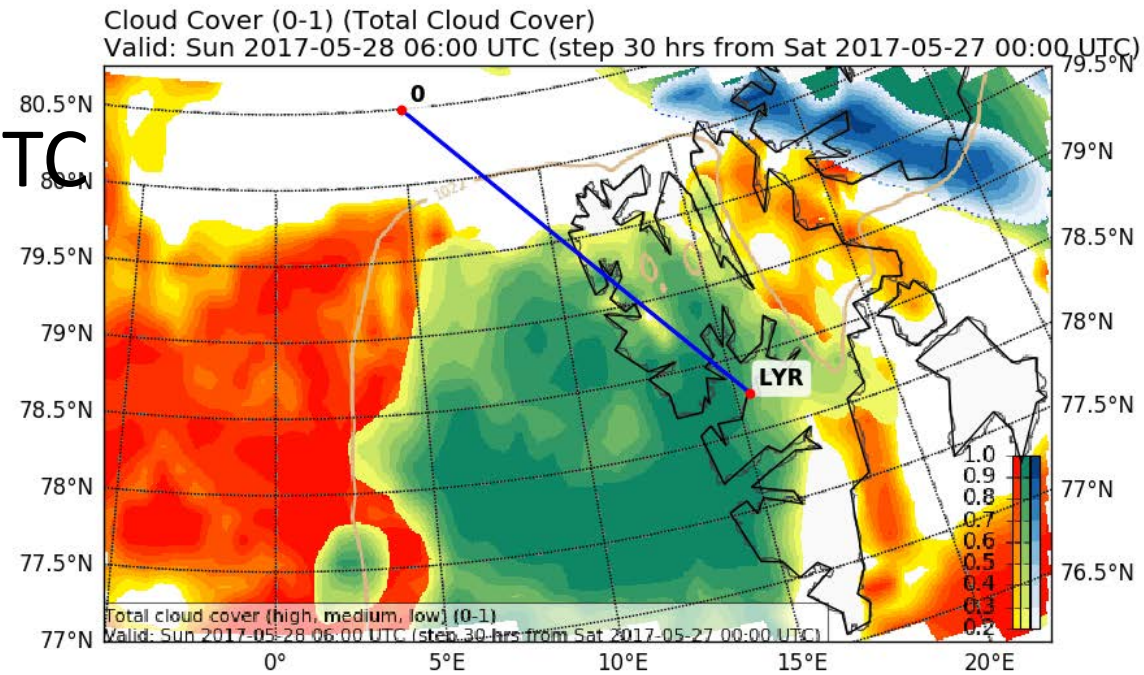
Mid-level cloud cover 28 May 2017 @ 12 UTC



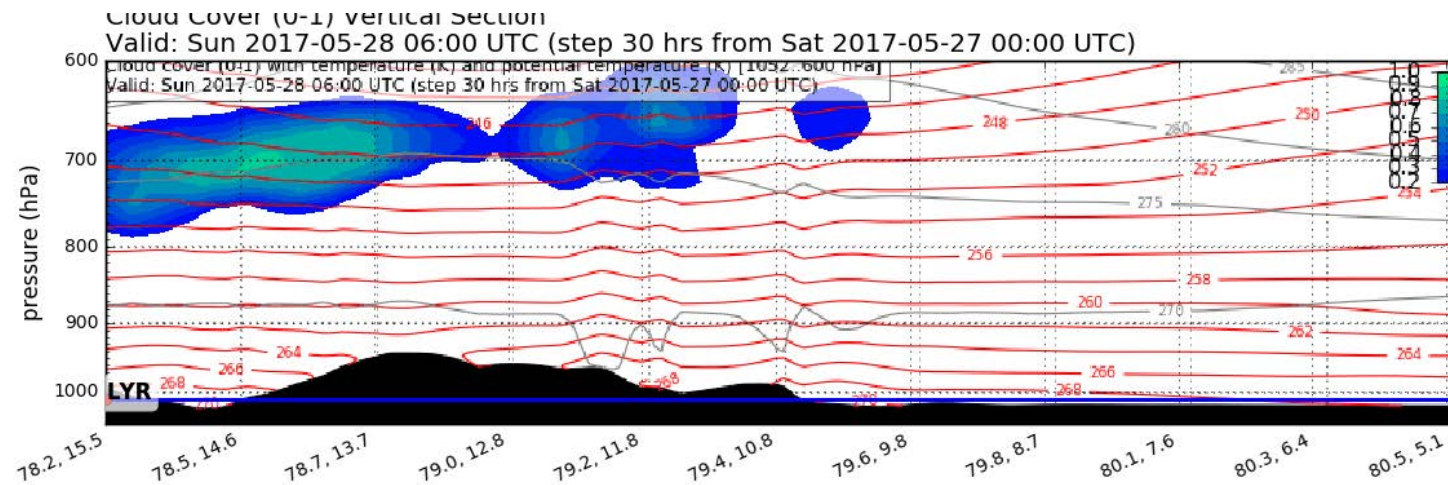
High-level cloud cover 28 May 2017 @ 12 UTC



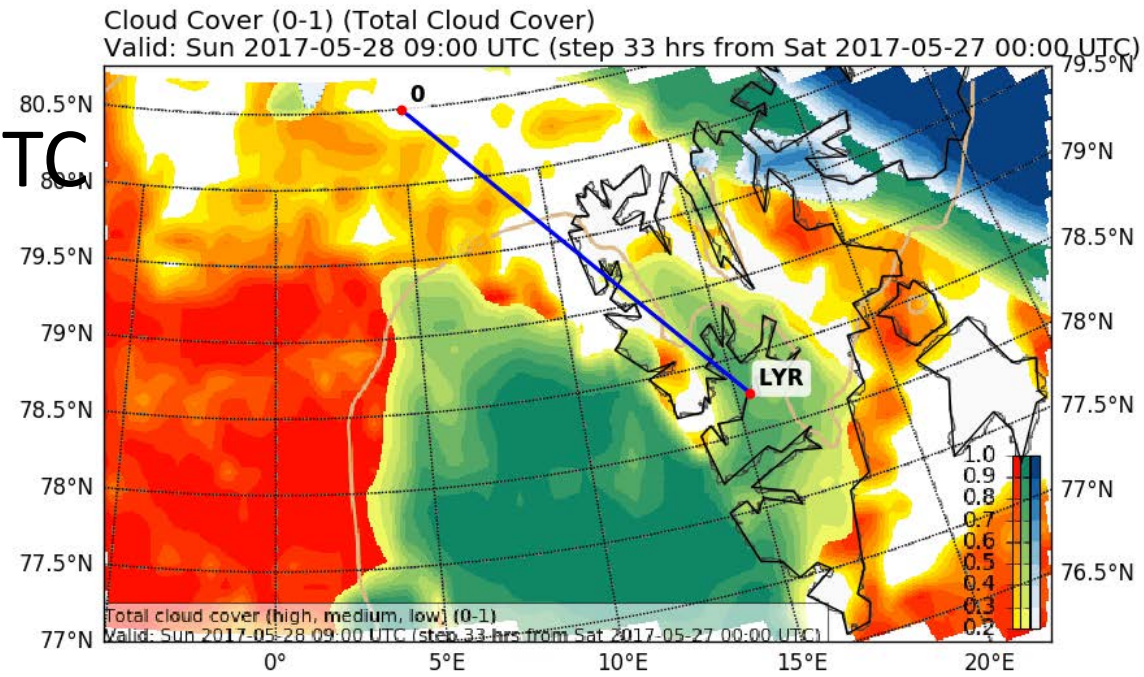
Forecast Tomorrow 06 UTC



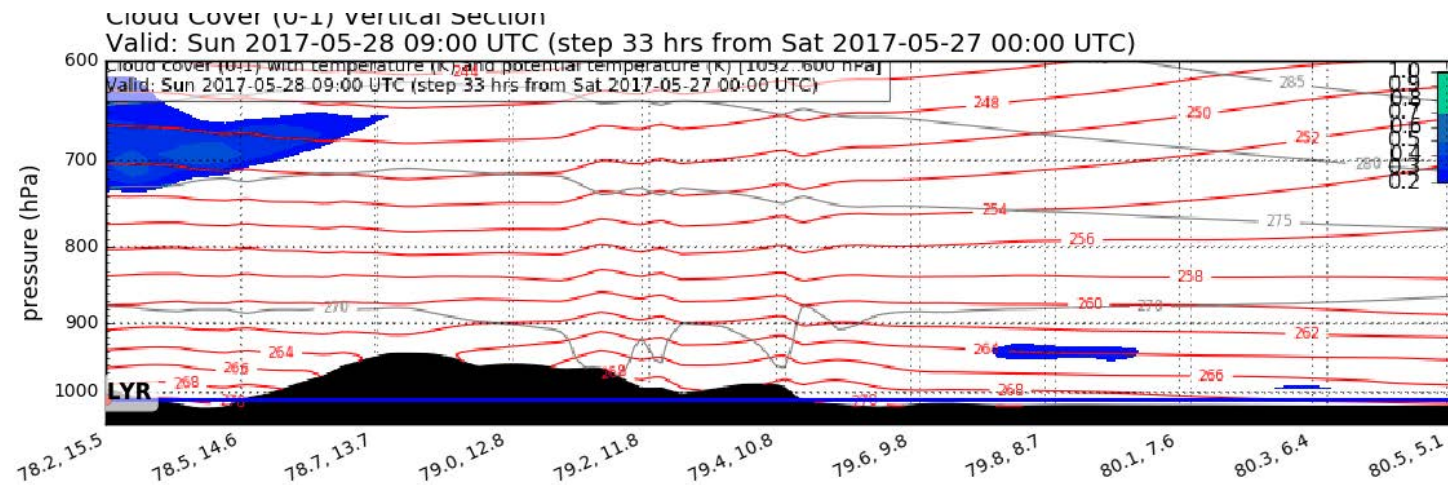
EPSG:77790000



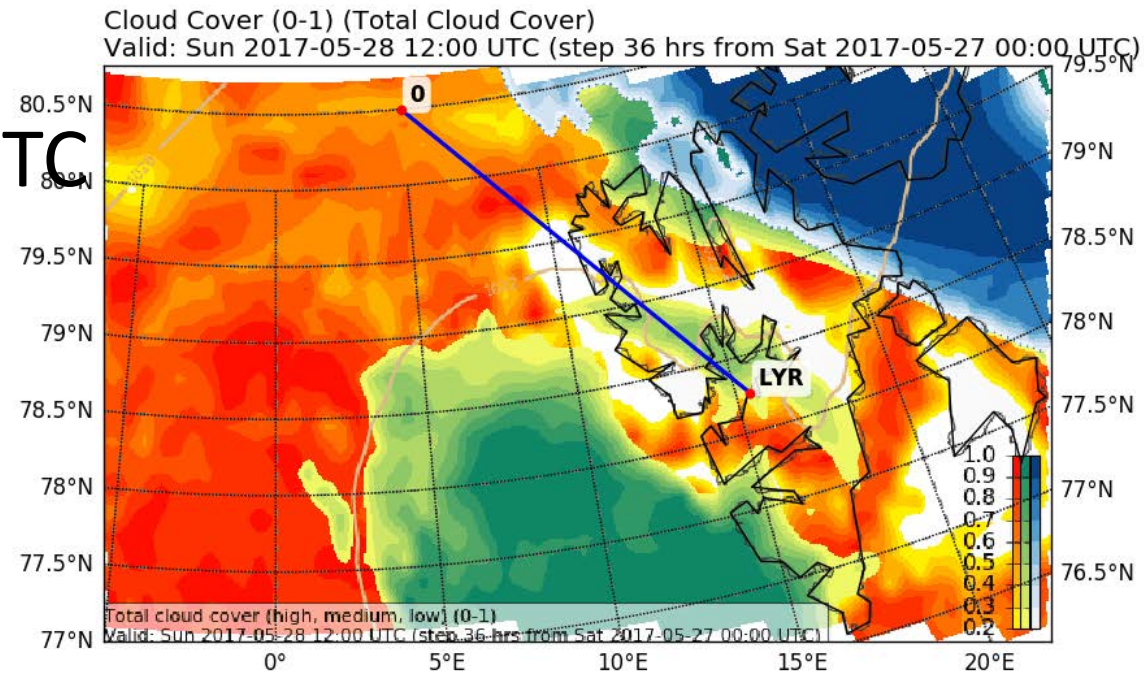
Forecast Tomorrow 09 UTC



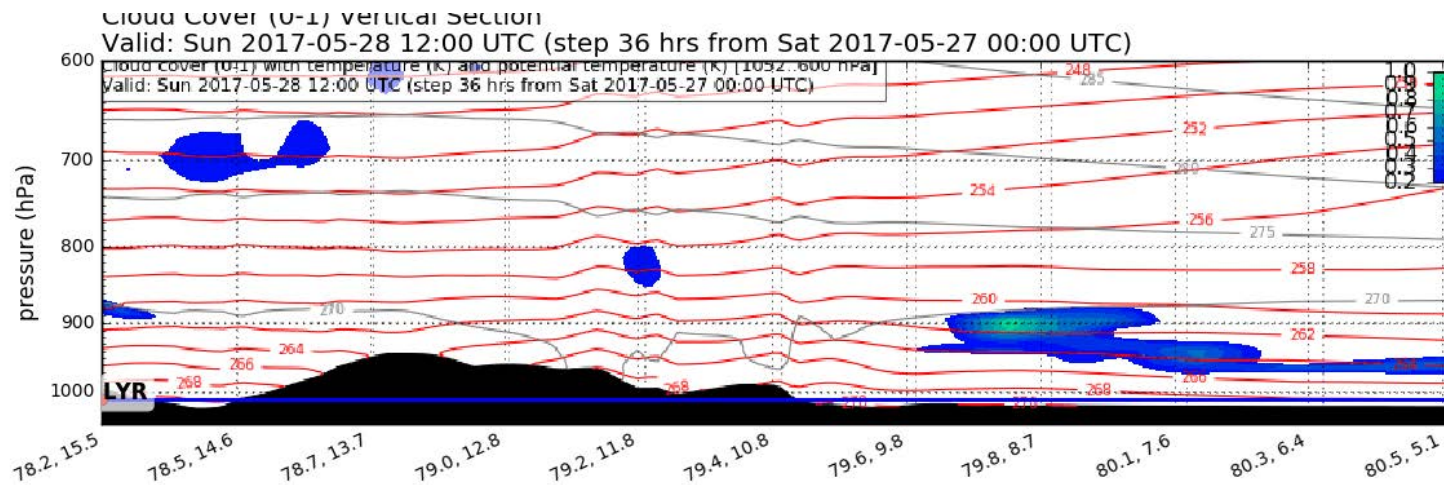
EPSG:77790000



Forecast Tomorrow 12 UTC

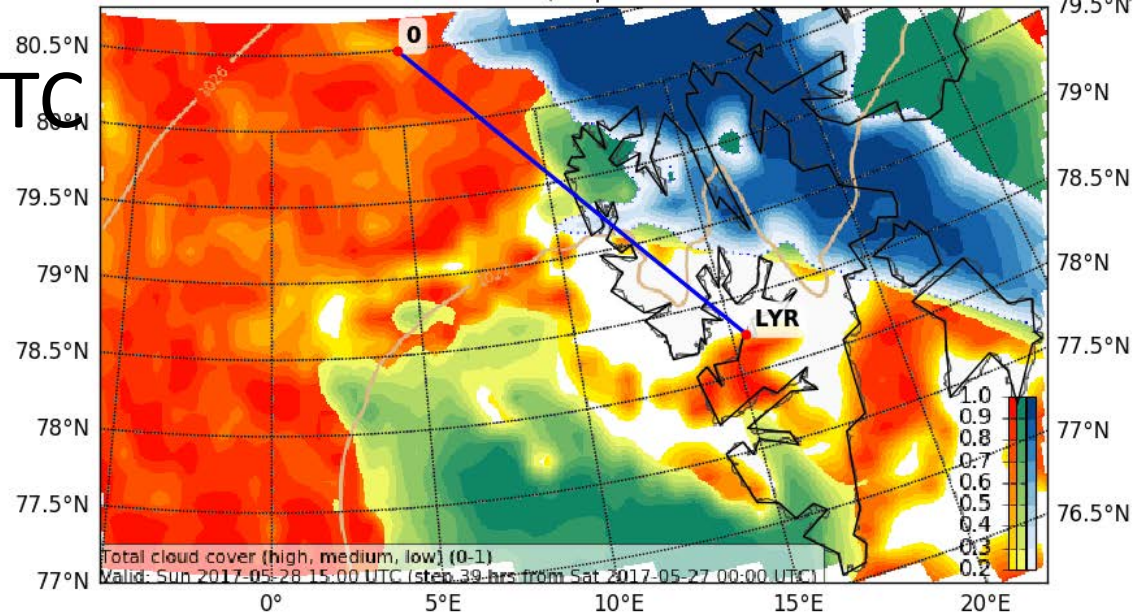


EPSG:77790000

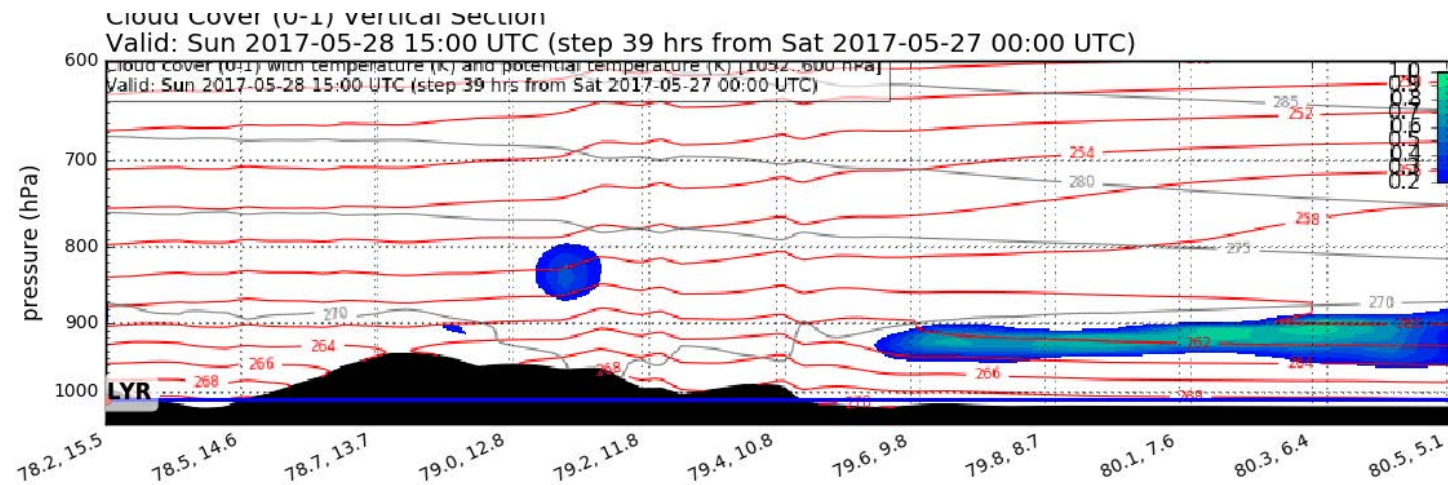


Forecast Tomorrow 15 UTC

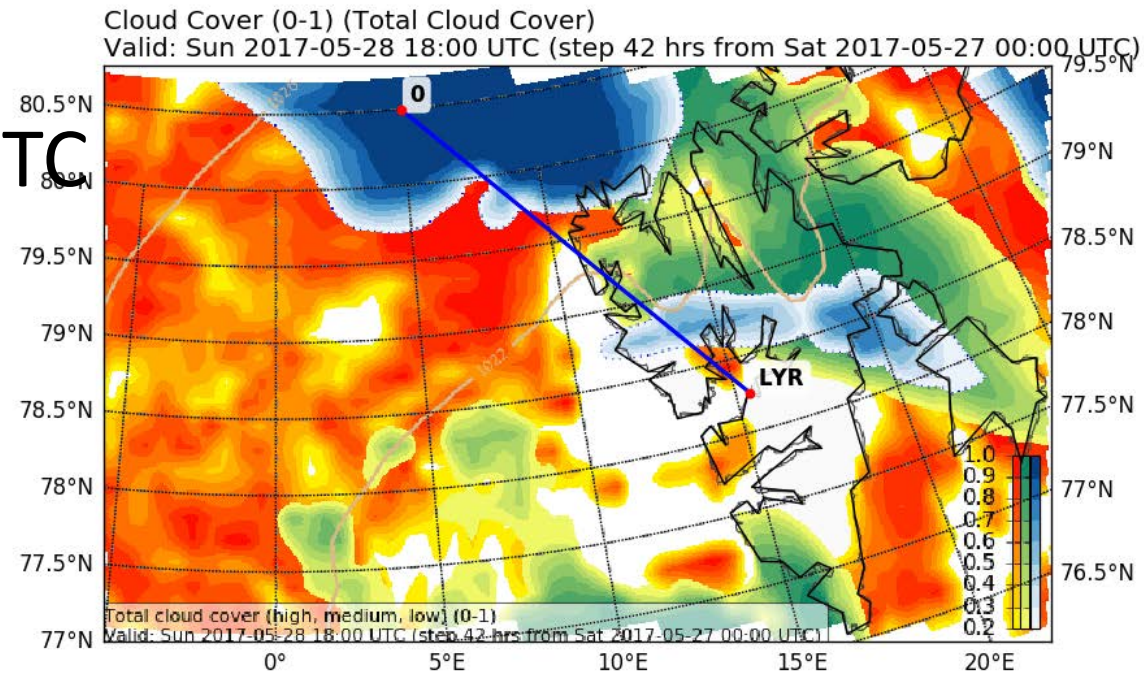
Cloud Cover (0-1) (Total Cloud Cover)
Valid: Sun 2017-05-28 15:00 UTC (step 39 hrs from Sat 2017-05-27 00:00 UTC)



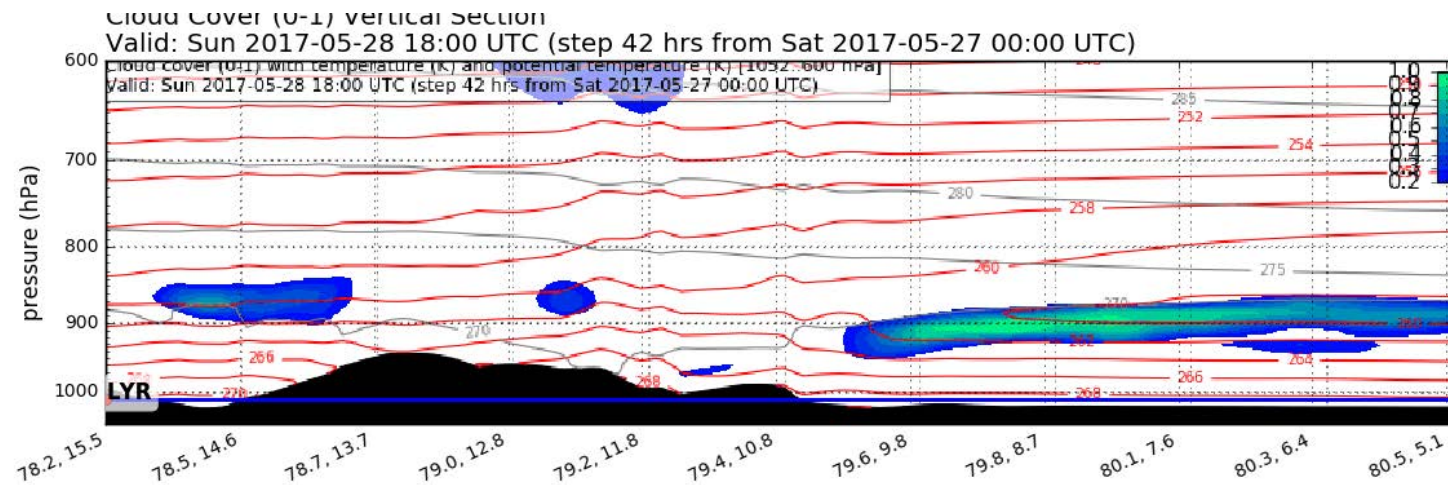
EPSG:77790000



Forecast Tomorrow 18 UTC



EPSG:77790000

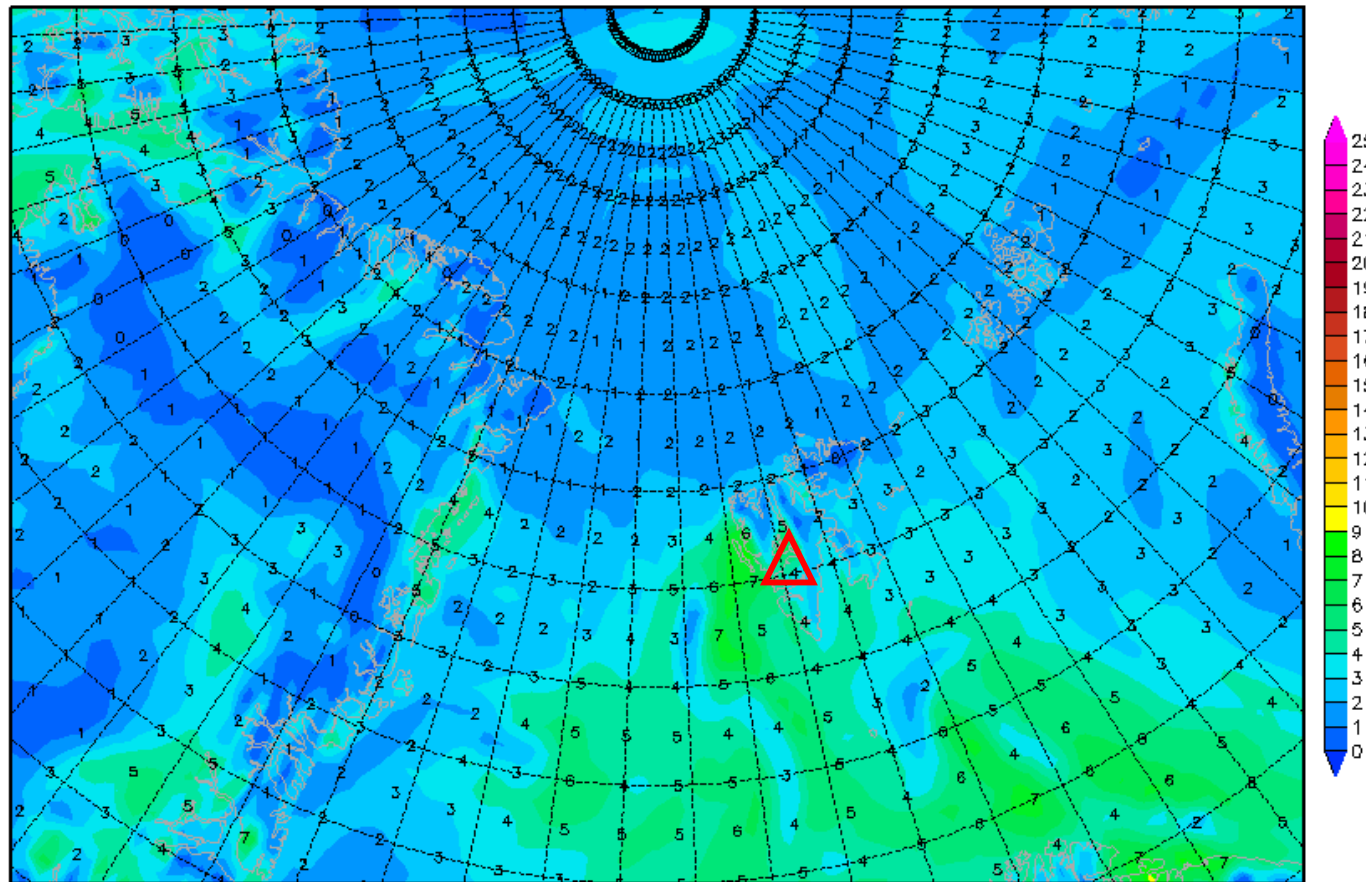


2-m dew point diff. 28 May 2017 @ 12 UTC

Init : Sat,27MAY2017 00Z

Valid: Sun,28MAY2017 12Z

2m (Temperatur-Taupunkt)



Daten: GFS
(C) Wetterzentrale
www.wetterzentrale.de

Outlook

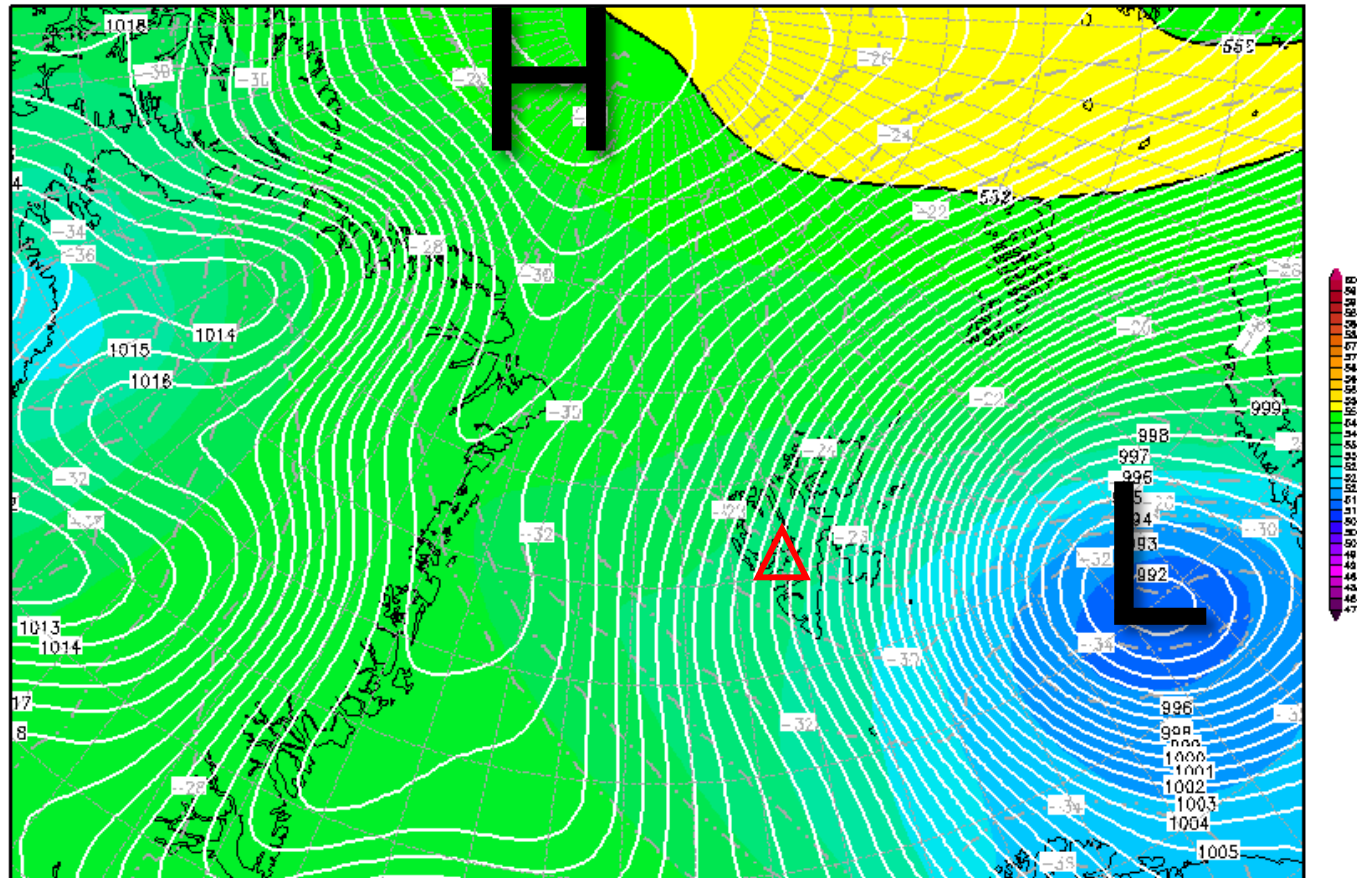
Mon 29 May – Tue 30 May 2017

Mon 29 May 2017

Init : Sat,27MAY2017 00Z

Valid: Mon,29MAY2017 12Z

500 hPa Geopot.(gpdm), T (C) und Bodendr. (hPa)



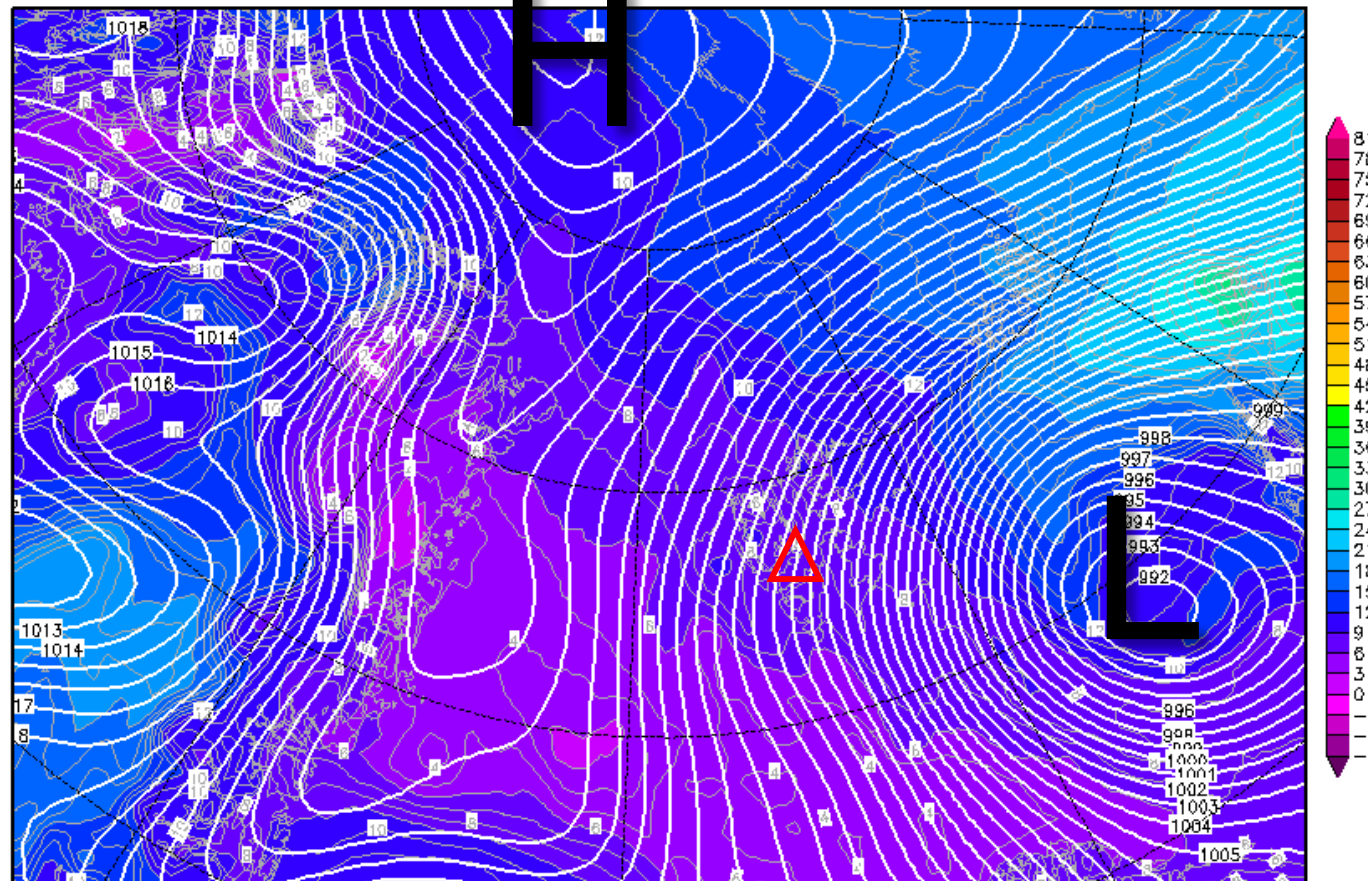
Surf. Pressure &
500-hPa Theta Equiv.
29 May 2017 @ 12 UTC

850-hPa Theta Equiv. 29 May 2017 @ 12 UTC

Init : Sat,27MAY2017 00Z

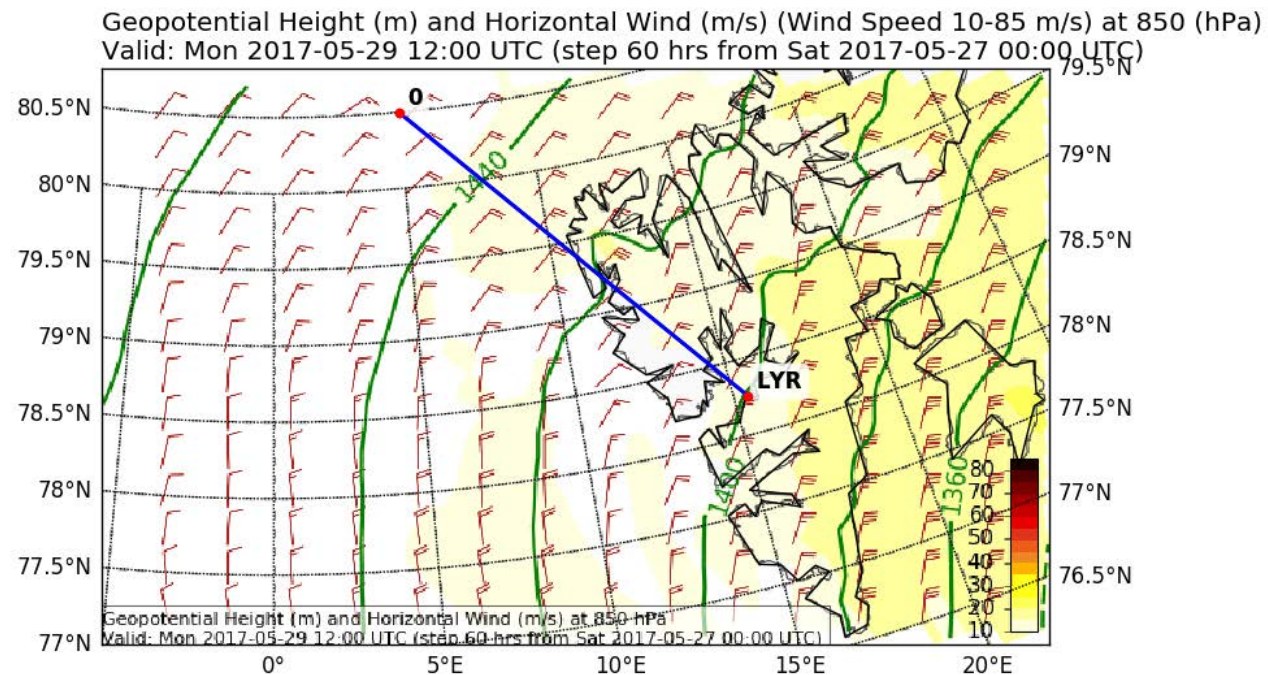
Valid: Mon,29MAY2017 12Z

Bodendruck (hPa) und 850 hPa Aeq.Pot.T. (Grad C)



Daten: GFS-Modell des amerikanischen Wetterdienstes
(C) Wetterzentrale
www.wetterzentrale.de

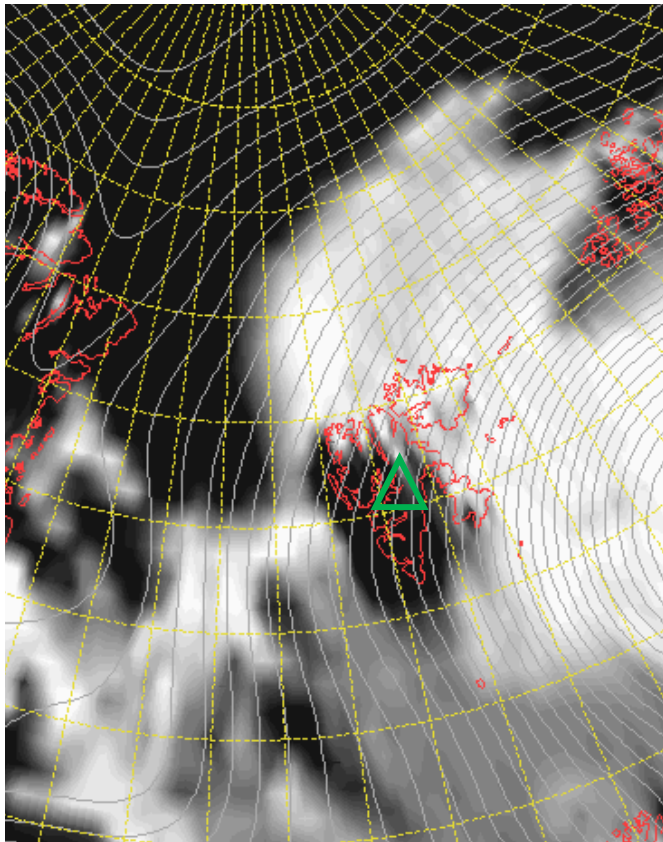
Wind, After Tomorrow 12 UTC



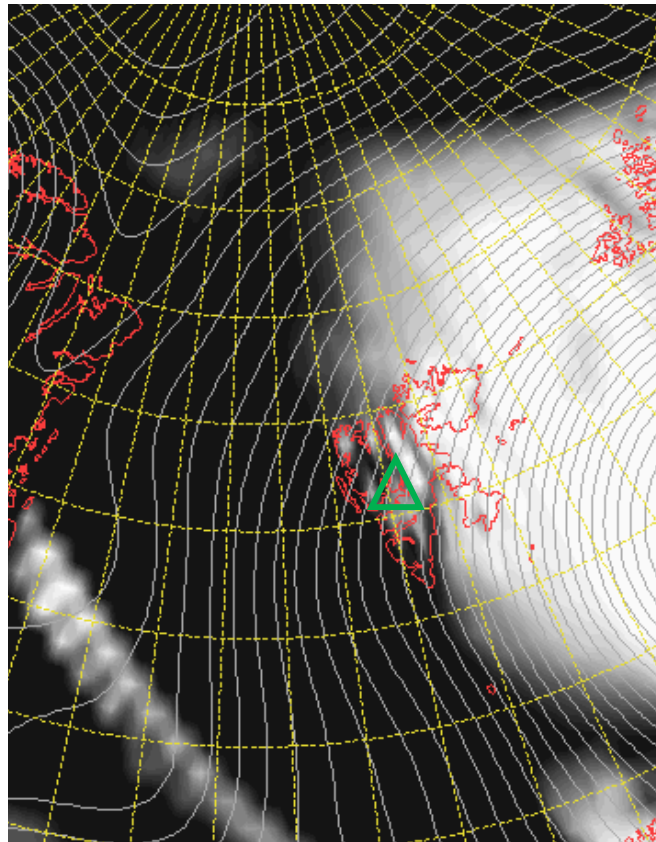
EPSG:77790000

Cloud Cover 29 May 2017 @ 12 UTC

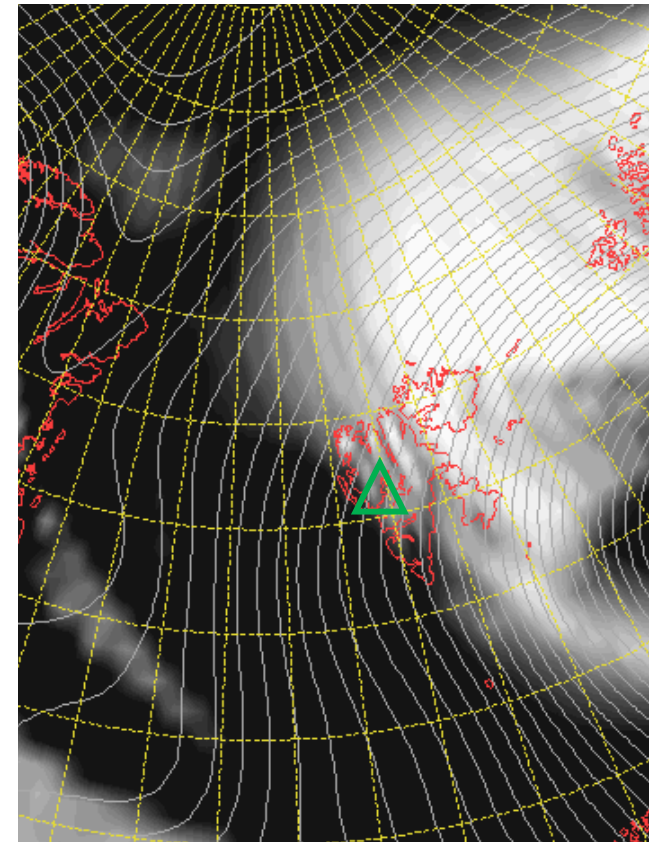
L



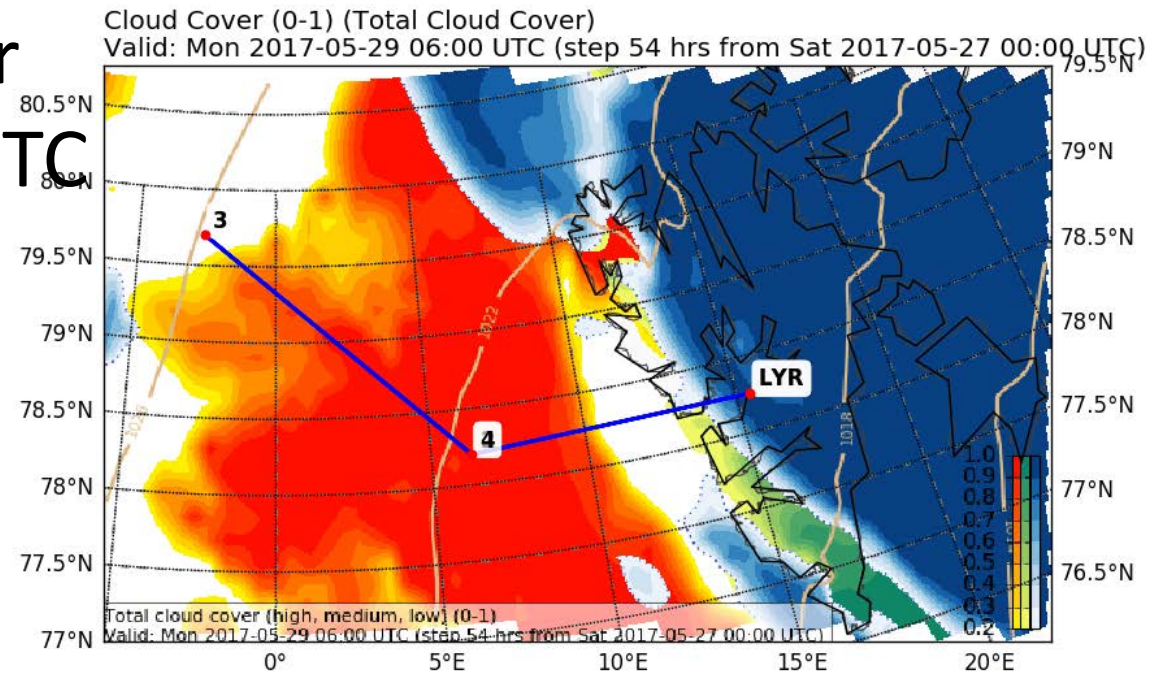
M



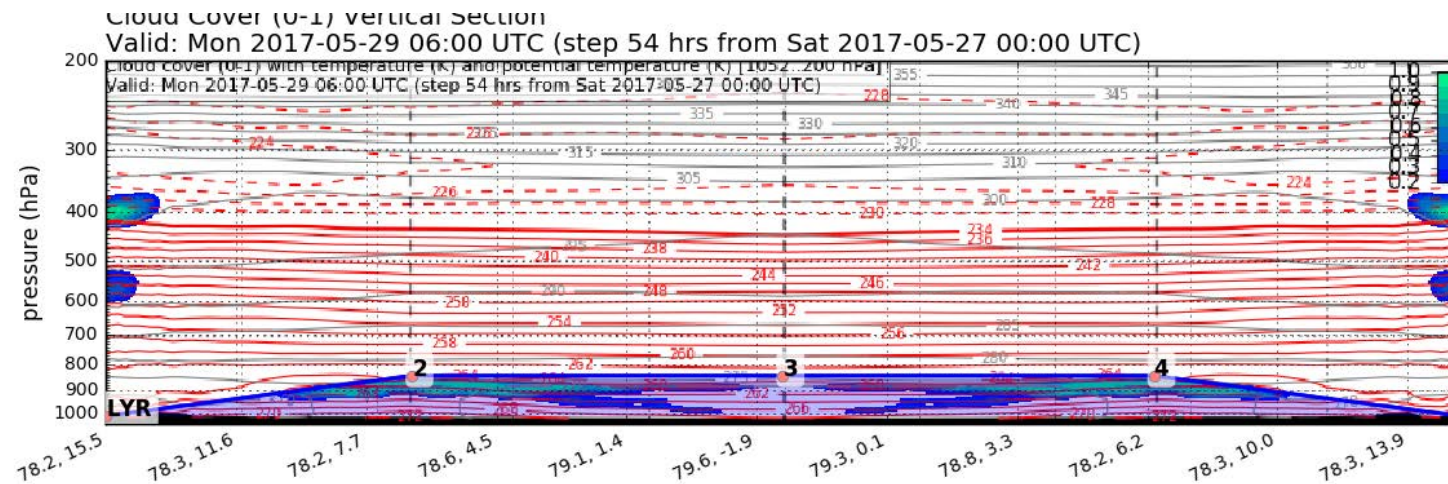
H



Forecast After Tomorrow 06 UTC



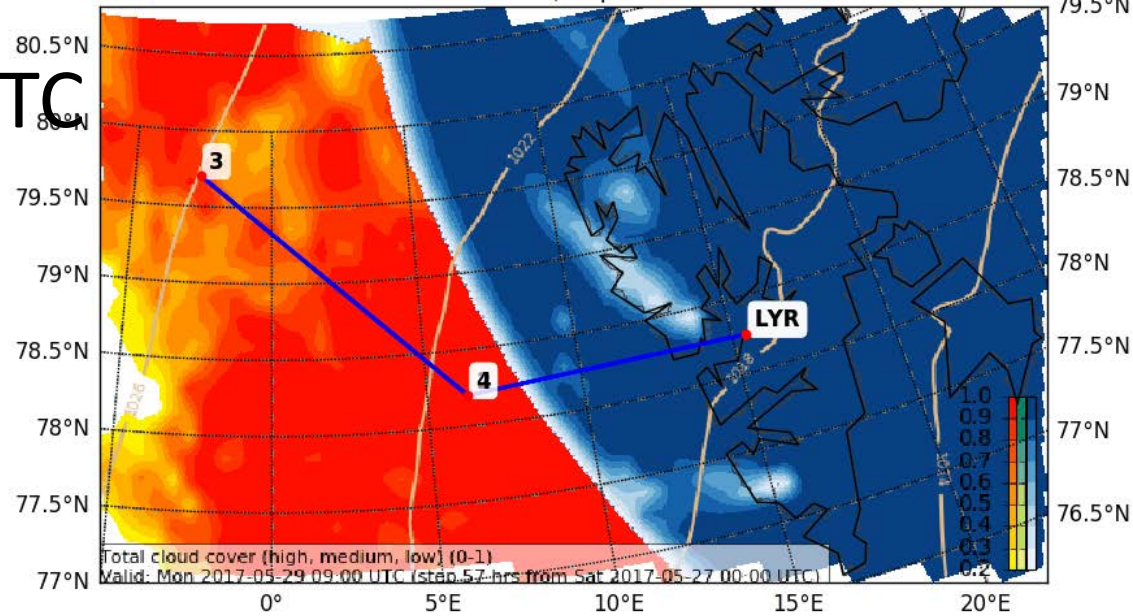
EPSG:77790000



Forecast After Tomorrow 09 UTC

Cloud Cover (0-1) (Total Cloud Cover)

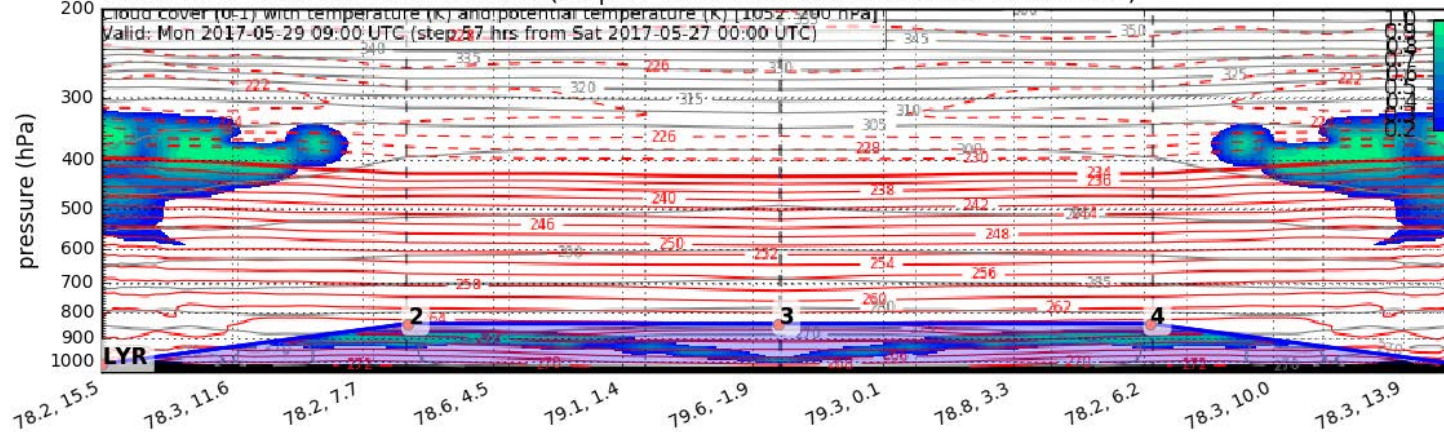
Valid: Mon 2017-05-29 09:00 UTC (step 57 hrs from Sat 2017-05-27 00:00 UTC)



EPSG:77790000

Cloud Cover (0-1) vertical section

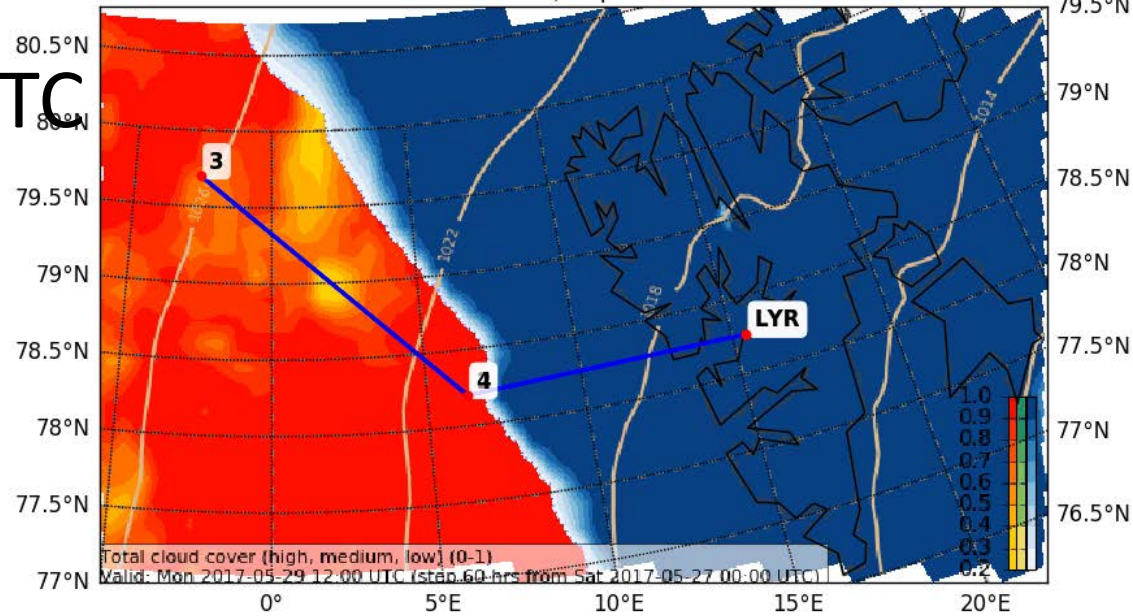
Valid: Mon 2017-05-29 09:00 UTC (step 57 hrs from Sat 2017-05-27 00:00 UTC)



Forecast After Tomorrow 12 UTC

Cloud Cover (0-1) (Total Cloud Cover)

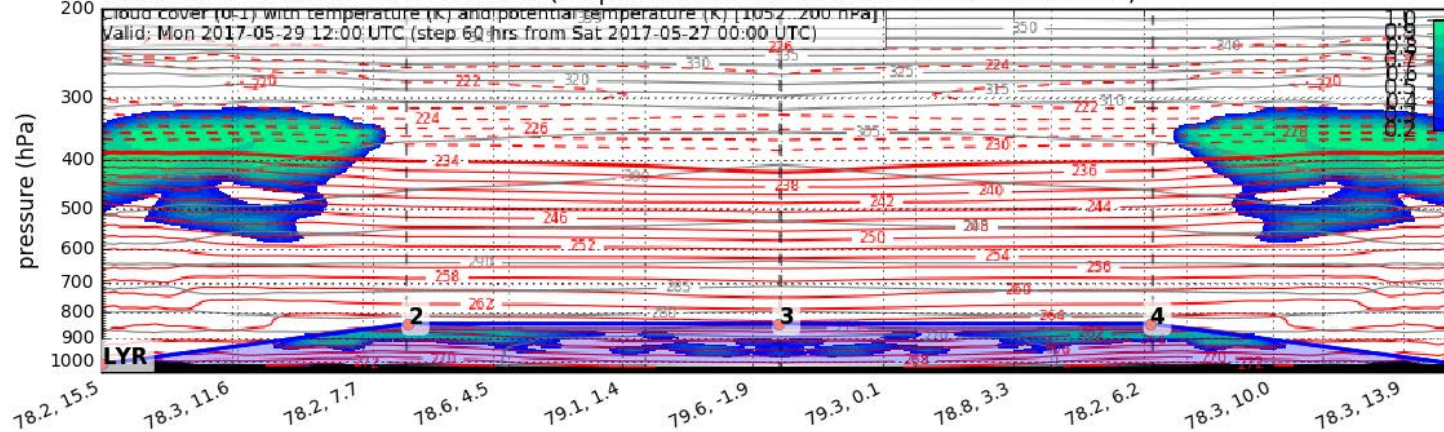
Valid: Mon 2017-05-29 12:00 UTC (step 60 hrs from Sat 2017-05-27 00:00 UTC)



EPSG:77790000

Cloud Cover (0-1) vertical section

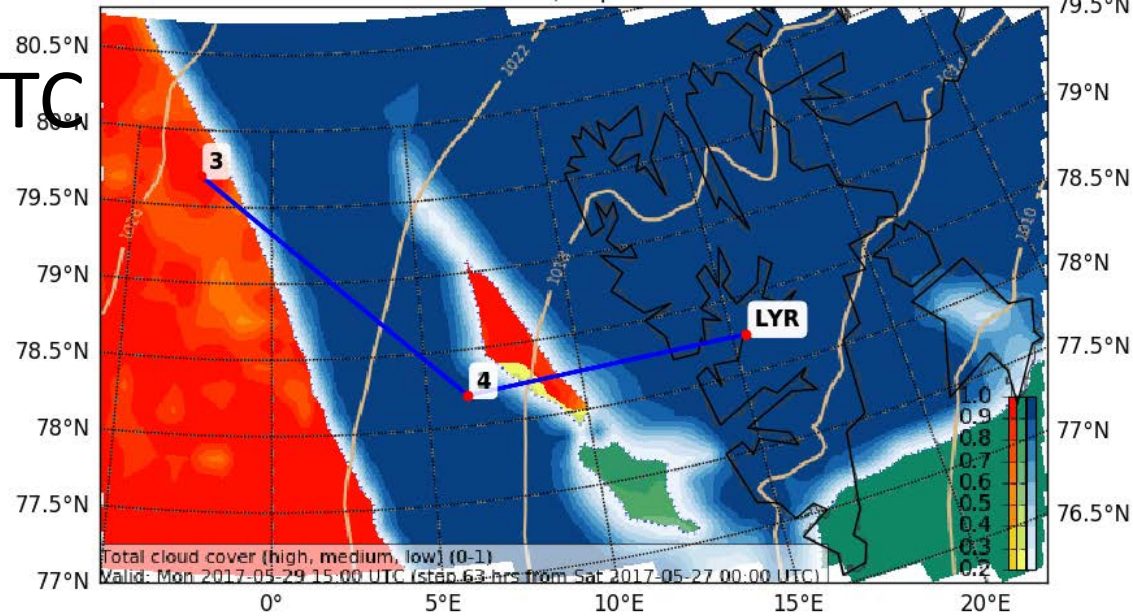
Valid: Mon 2017-05-29 12:00 UTC (step 60 hrs from Sat 2017-05-27 00:00 UTC)



Forecast After Tomorrow 15 UTC

Cloud Cover (0-1) (Total Cloud Cover)

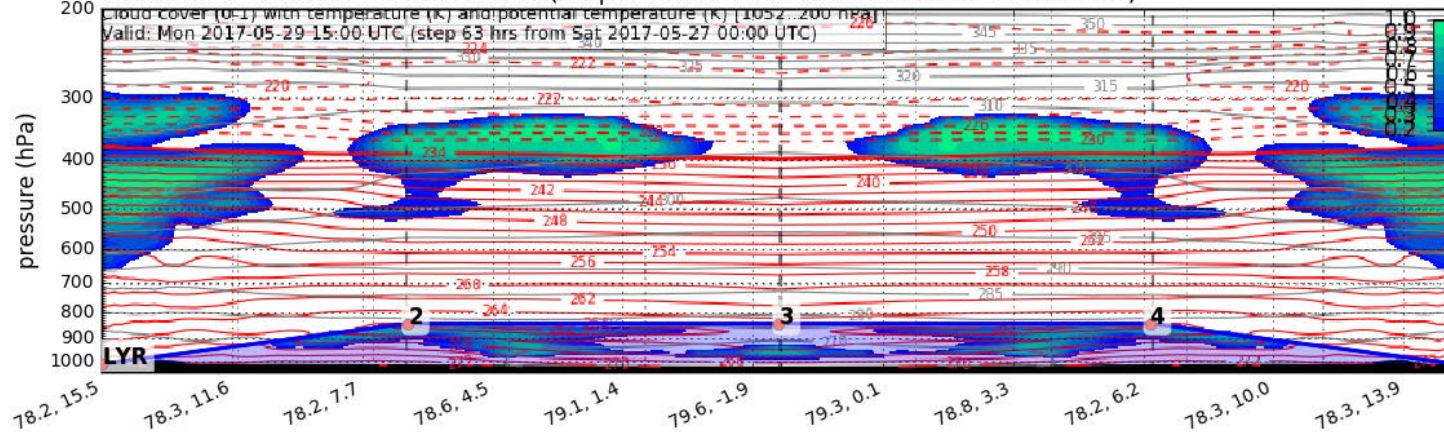
Valid: Mon 2017-05-29 15:00 UTC (step 63 hrs from Sat 2017-05-27 00:00 UTC)



EPSG:77790000

Cloud Cover (0-1) vertical section

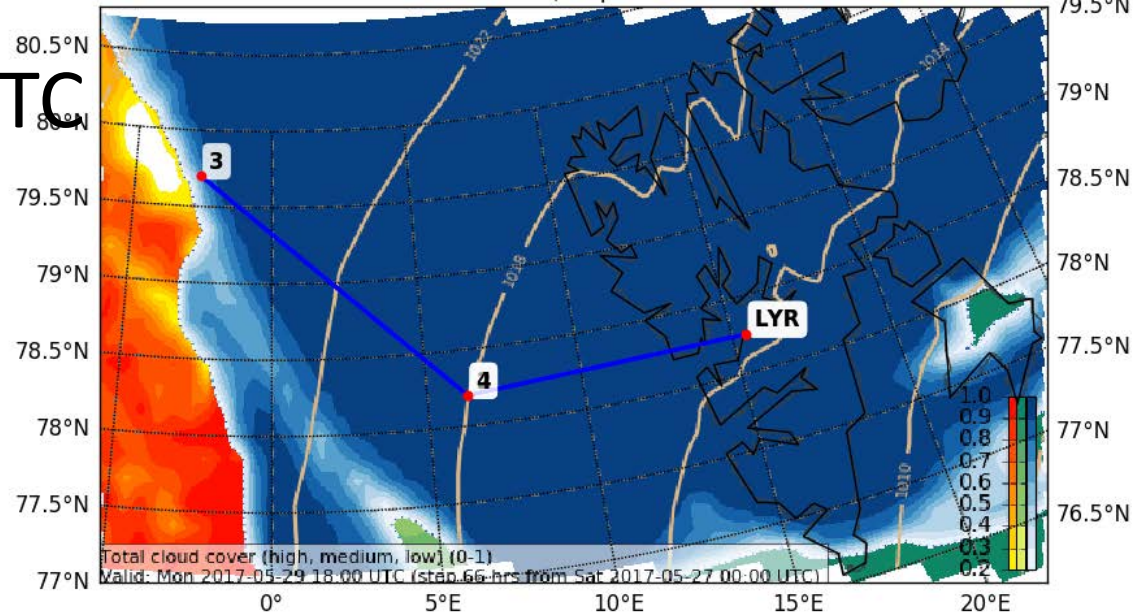
Valid: Mon 2017-05-29 15:00 UTC (step 63 hrs from Sat 2017-05-27 00:00 UTC)



Forecast After Tomorrow 18 UTC

Cloud Cover (0-1) (Total Cloud Cover)

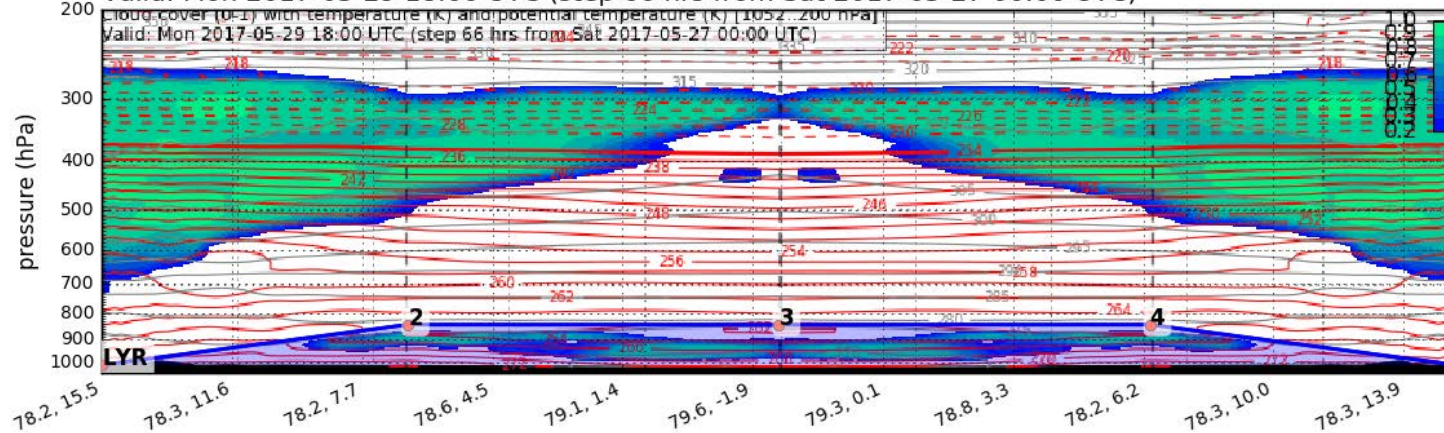
Valid: Mon 2017-05-29 18:00 UTC (step 66 hrs from Sat 2017-05-27 00:00 UTC)



EPSG:77790000

Cloud Cover (0-1) vertical section

Valid: Mon 2017-05-29 18:00 UTC (step 66 hrs from Sat 2017-05-27 00:00 UTC)

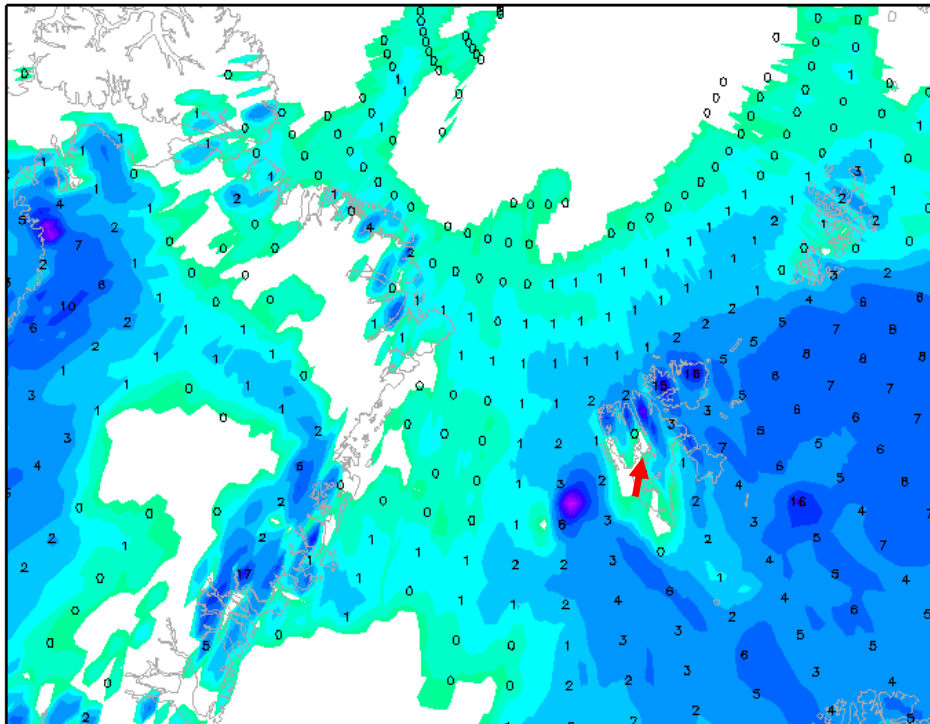


Precipitation 29 May 2017 @ 15 & 18 UTC (GFS)

Init : Sat,27MAY2017 00Z

Valid: Mon,29MAY2017 15Z

Gesamtniederschlag bis zum Termin (mm)

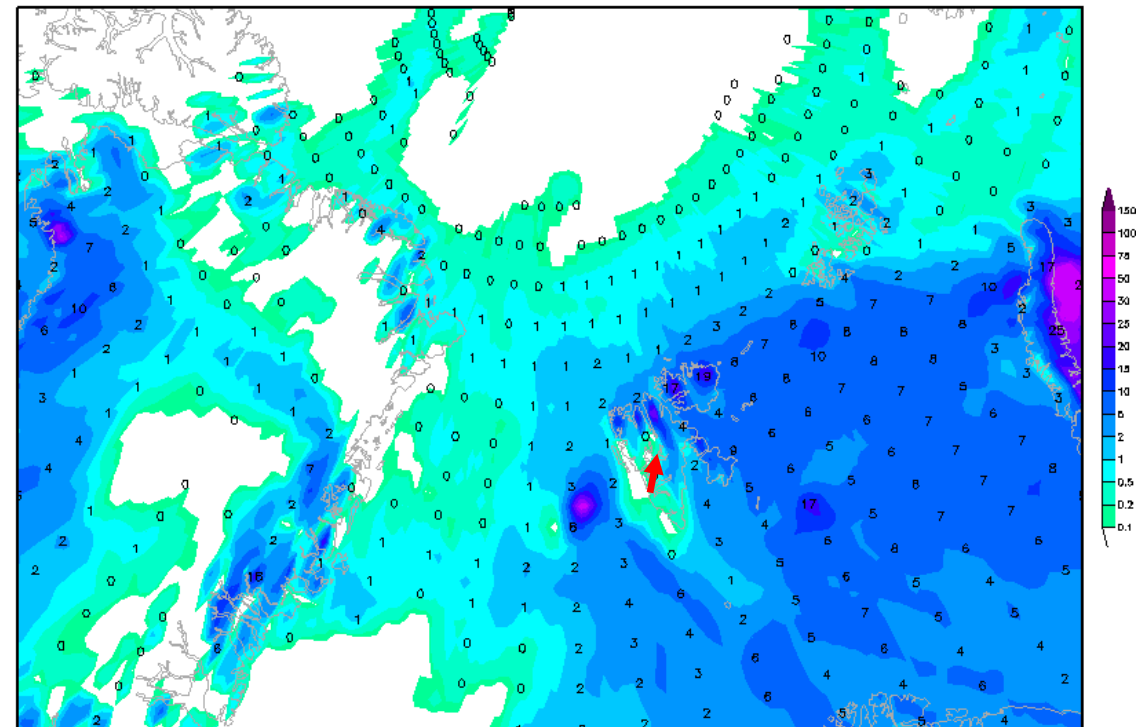


Daten: GFS-Modell des US-Wetterdienstes
(C) Wetterzentrale
www.wetterzentrale.de

Init : Sat,27MAY2017 00Z

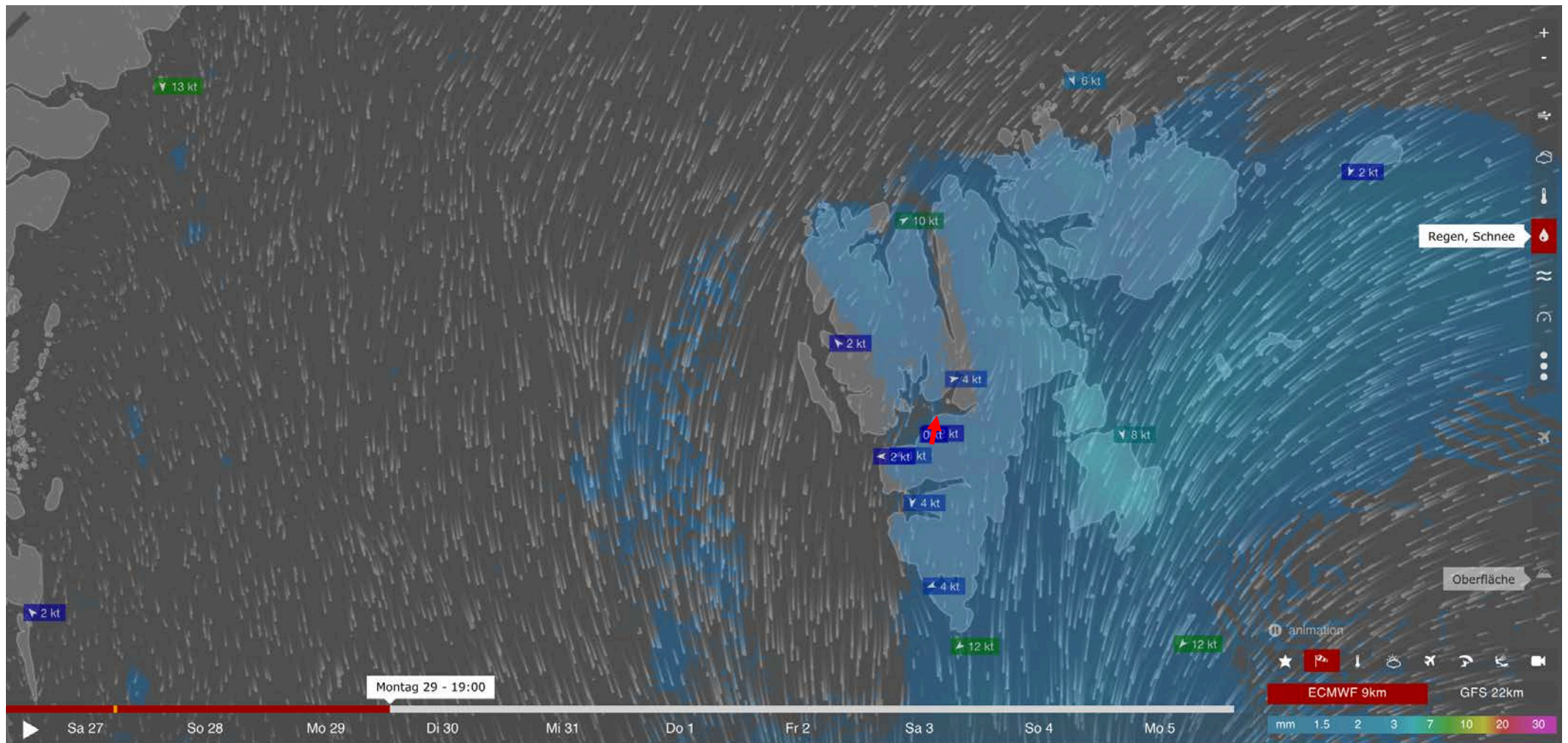
Valid: Mon,29MAY2017 18Z

Gesamtniederschlag bis zum Termin (mm)



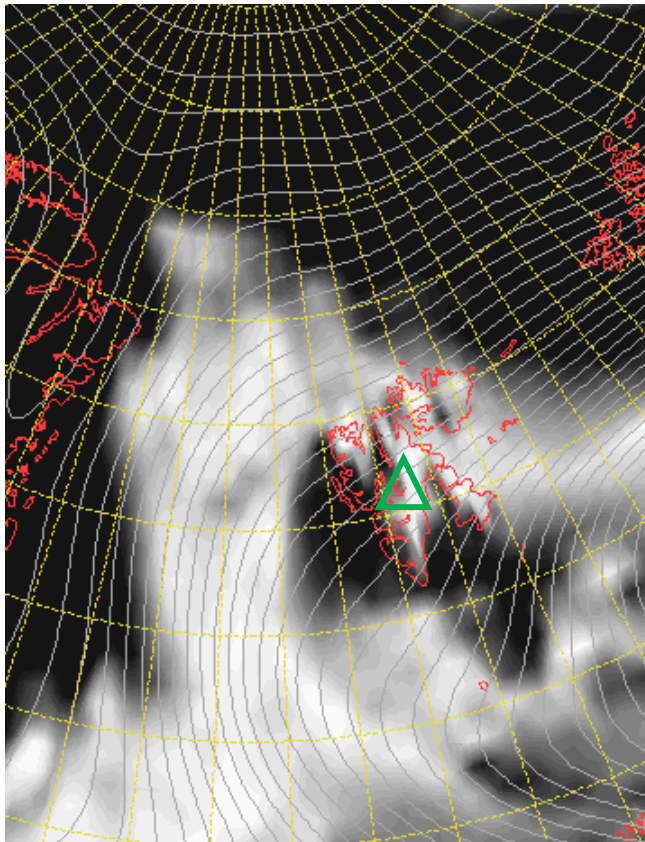
Daten: GFS-Modell des US-Wetterdienstes
(C) Wetterzentrale
www.wetterzentrale.de

Precipitation 29 May 2017 @ 19 LT (9-km ECMWF)

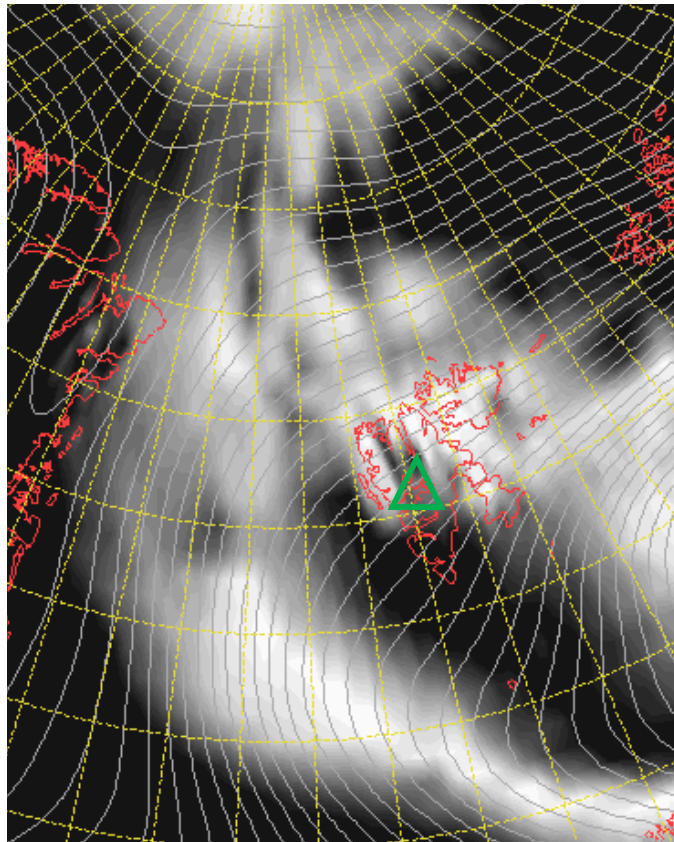


Cloud Cover 30 May 2017 @ 12 UTC

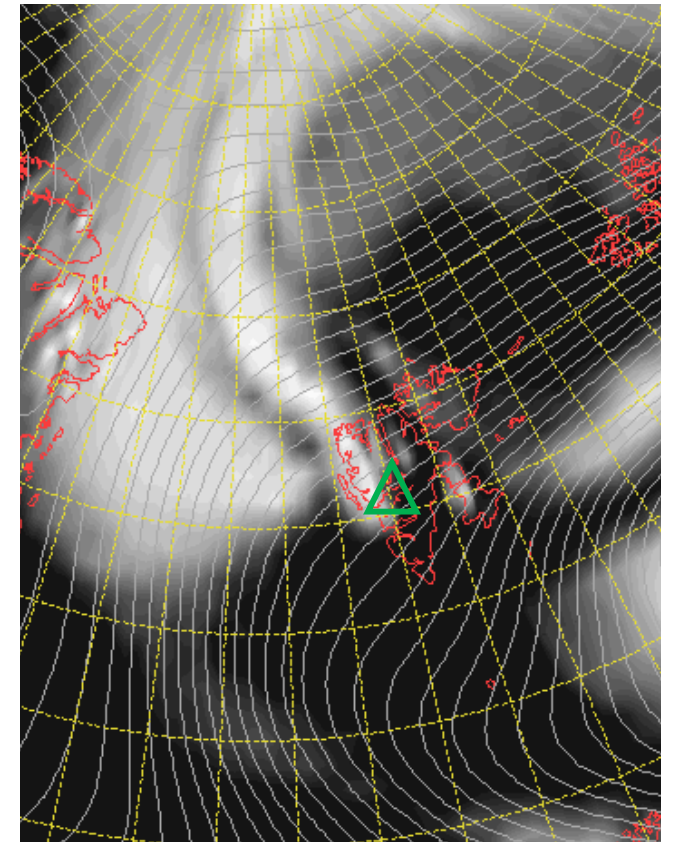
L



M



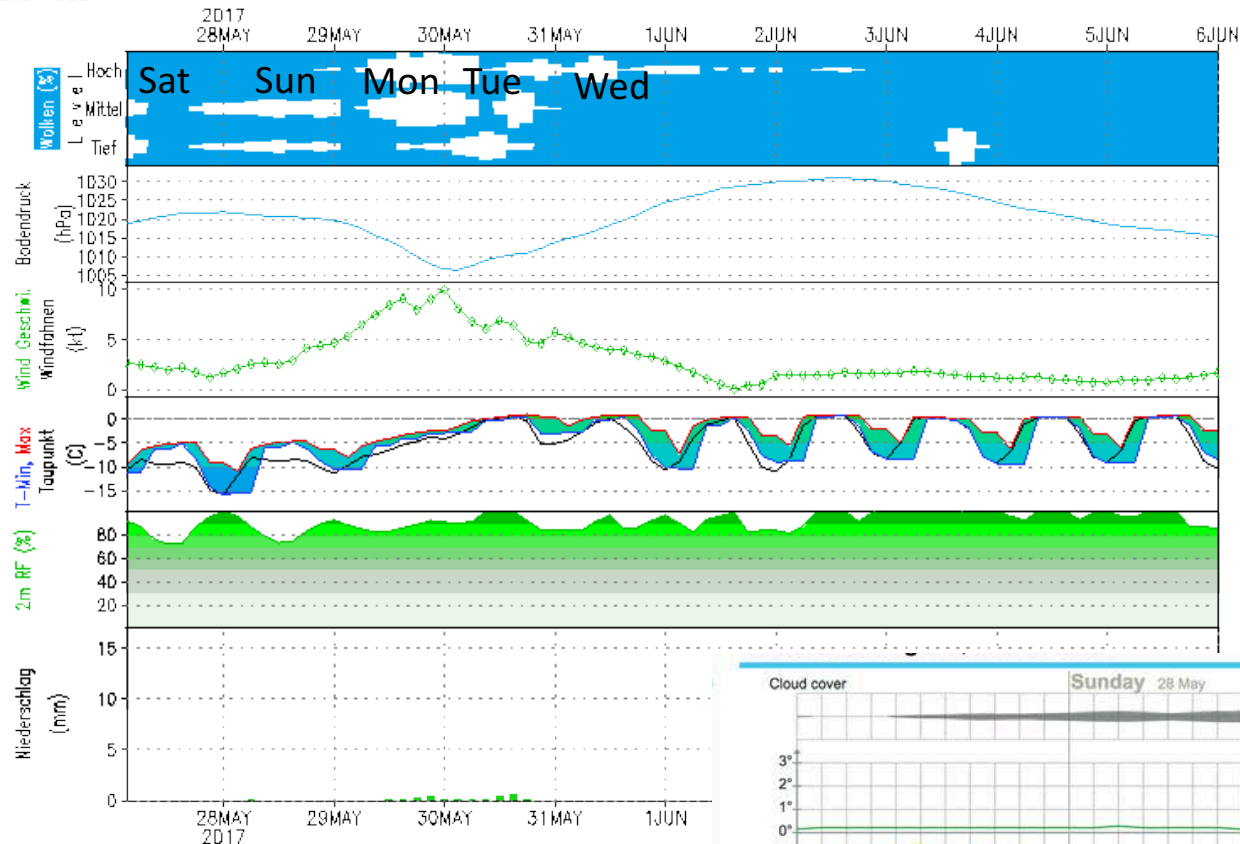
H



GFS – Meteogramm

Lon: 15.63 Lat: 78.22 Hgt: 331m

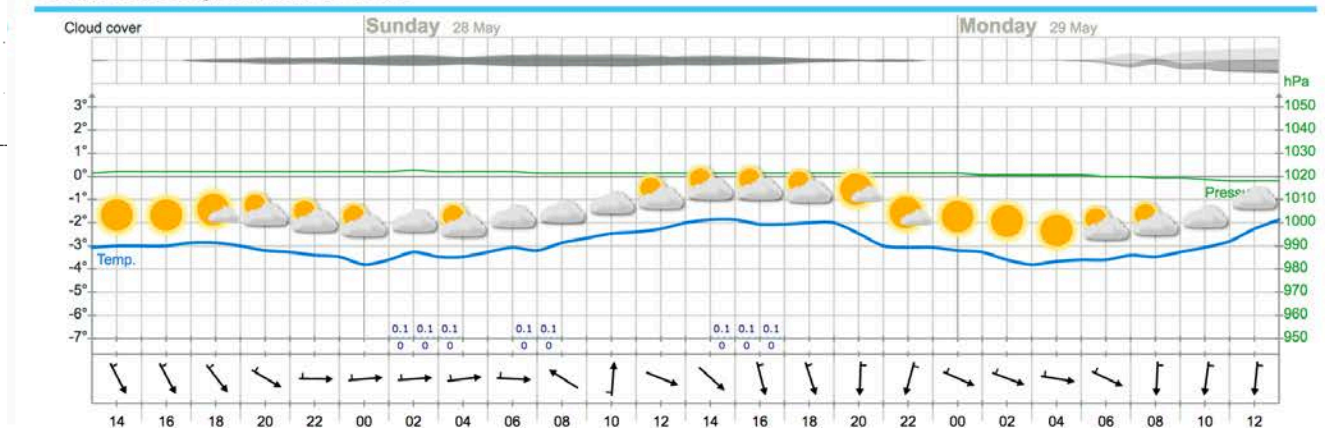
Lauf: 00Z



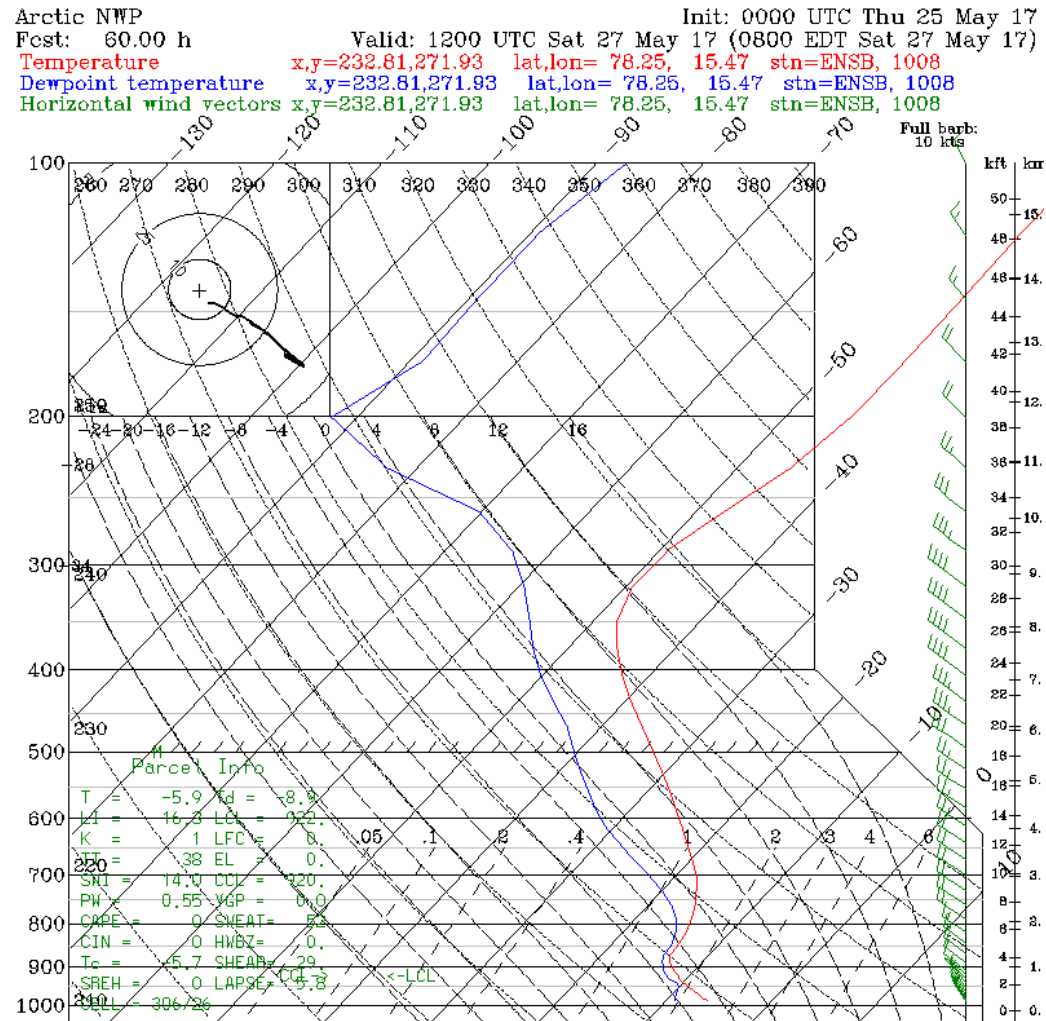
Heute kein Sonnenaufgang
Heute kein Sonnenuntergang

Outlook – Meteogram

YR.no



Sounding Longyearbyen 27 May 2017 @ 12 UTC



Precip. Water 27 May 2017

GFS 0.25°x0.25°
Daily Average

Precipitable Water
Saturday, May 27, 2017

