

# Weather briefing

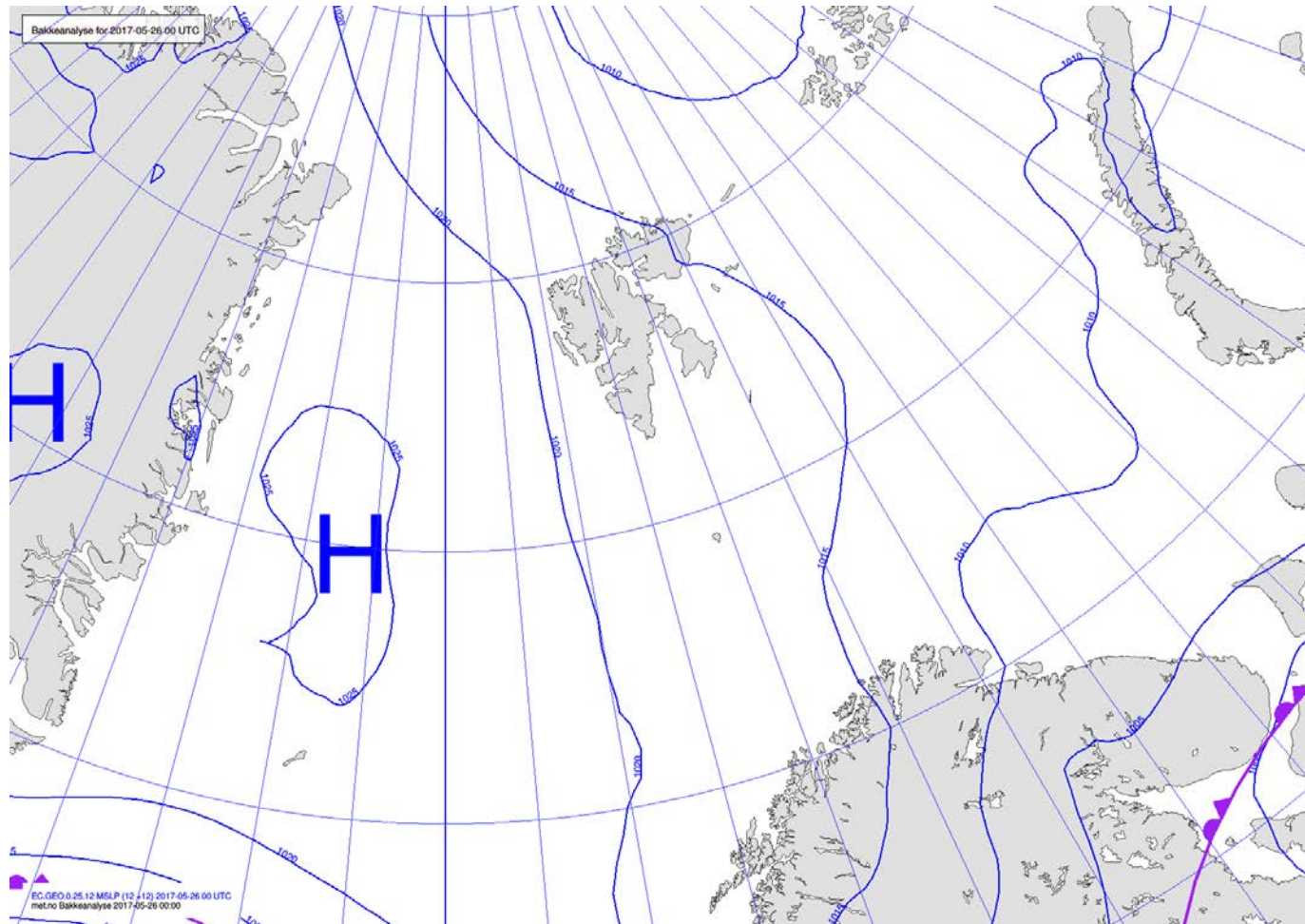
ACLOUD Longyearbyen, Svalbard

Fri 26 May 2017 – **Sat 27 May** – Mon 29 May 2017

## Summary

A low pressure system northeast of Spitsbergen directs a northwesterly airflow over Svalbard – on-going cold-air-outbreak. Dominating frontal cloudiness over our area. Snow in north and northwest areas and along the west coast. In central regions cloudy or partly cloudy and mainly dry. On the east coast cloudy and dry.

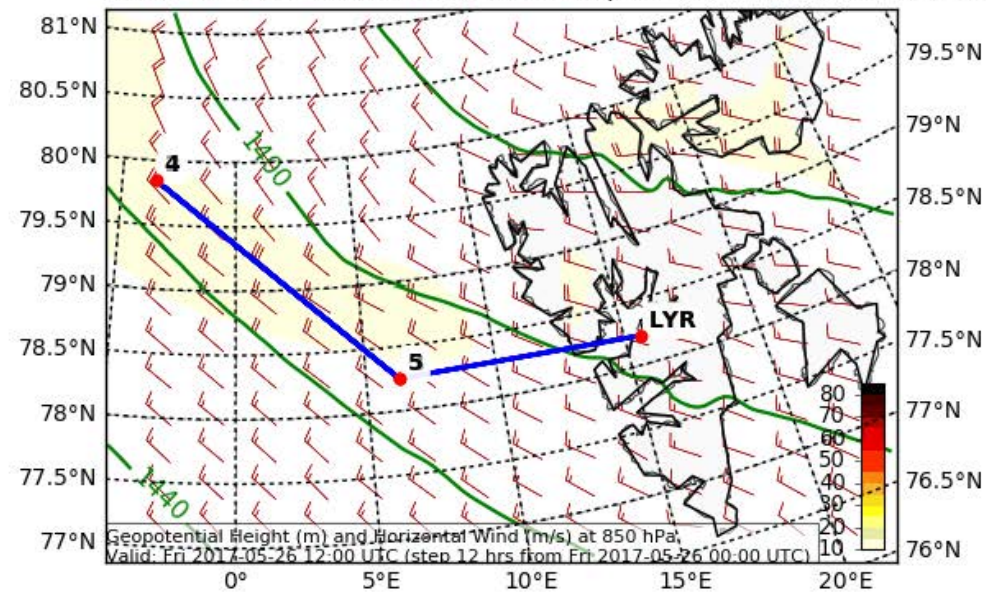
## Analysis 26 May 2017 @ 00 UTC



# Wind

## Today 12 UTC

Geopotential Height (m) and Horizontal Wind (m/s) (Wind Speed 10-85 m/s) at 850 (hPa)  
Valid: Fri 2017-05-26 12:00 UTC (step 12 hrs from Fri 2017-05-26 00:00 UTC)



EPSG:77790000

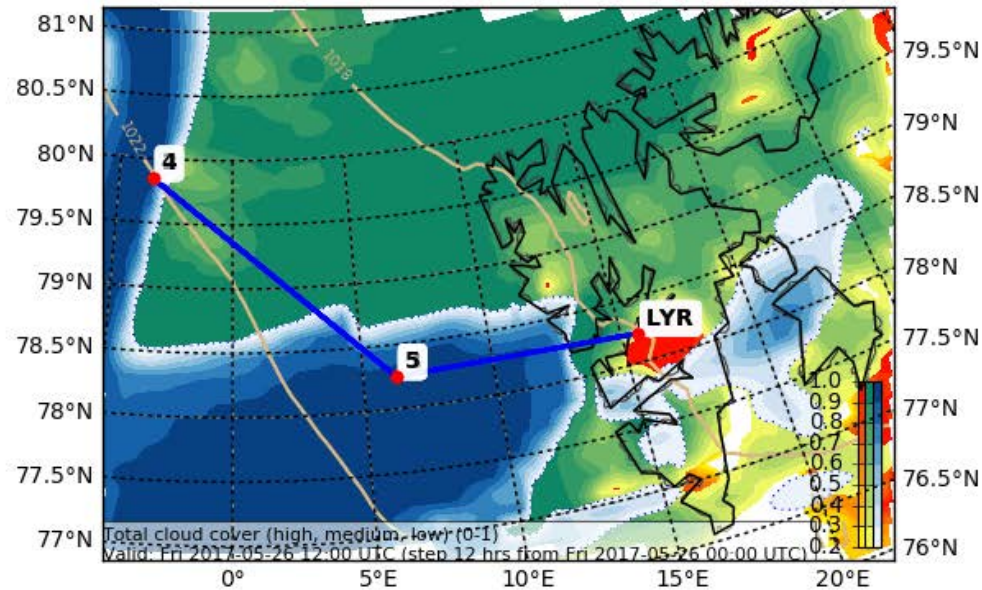


# Clouds

## Today 12 UTC

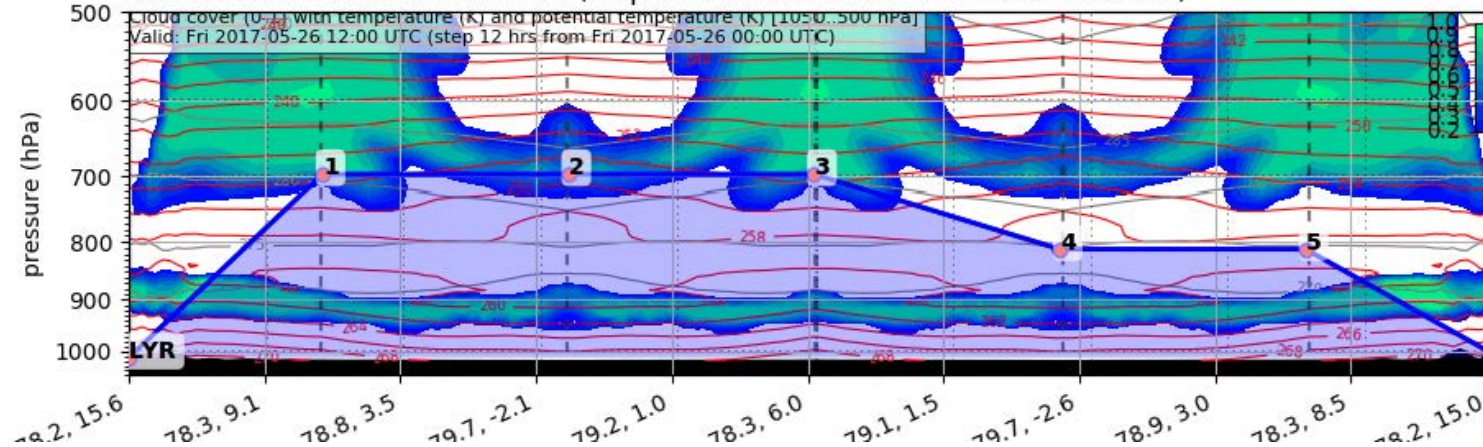
Cloud Cover (0-1) (Total Cloud Cover)

Valid: Fri 2017-05-26 12:00 UTC (step 12 hrs from Fri 2017-05-26 00:00 UTC)

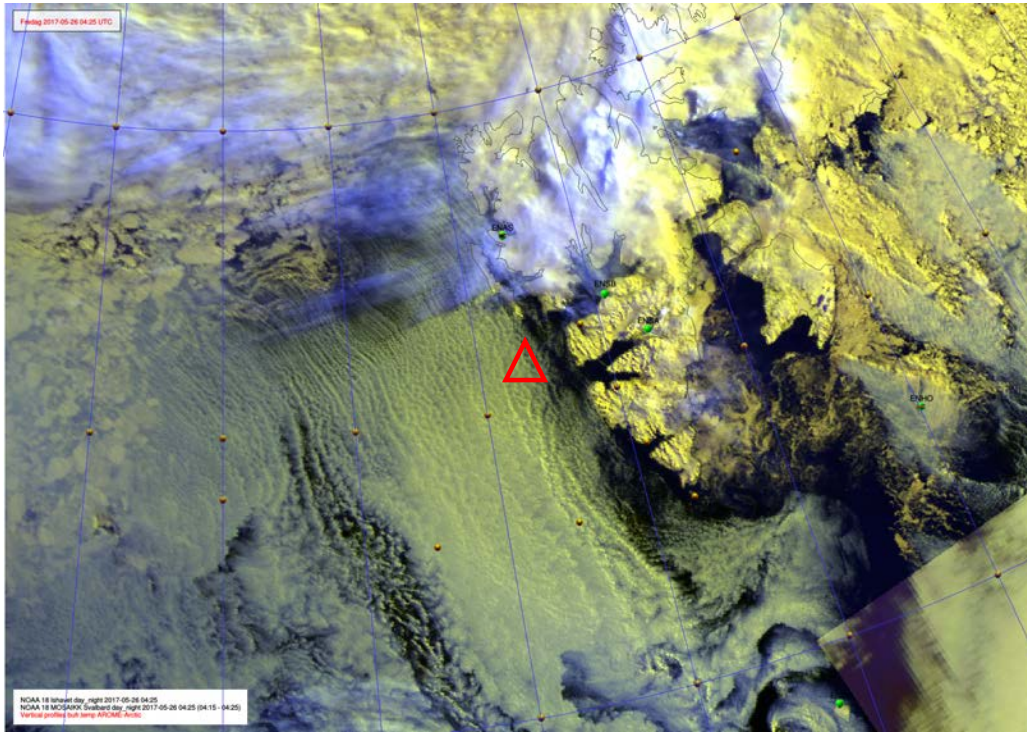


EPSG:77790000

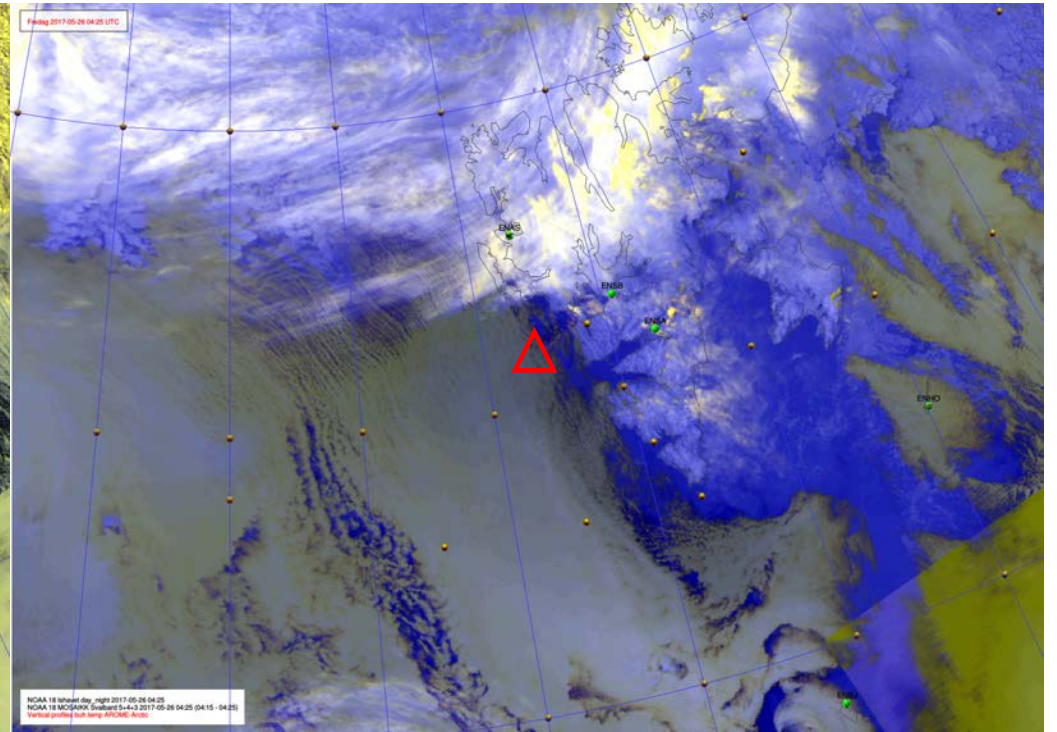
Valid: Fri 2017-05-26 12:00 UTC (step 12 hrs from Fri 2017-05-26 00:00 UTC)



# NOAA-19 26 May 2017 @ 0425 UTC



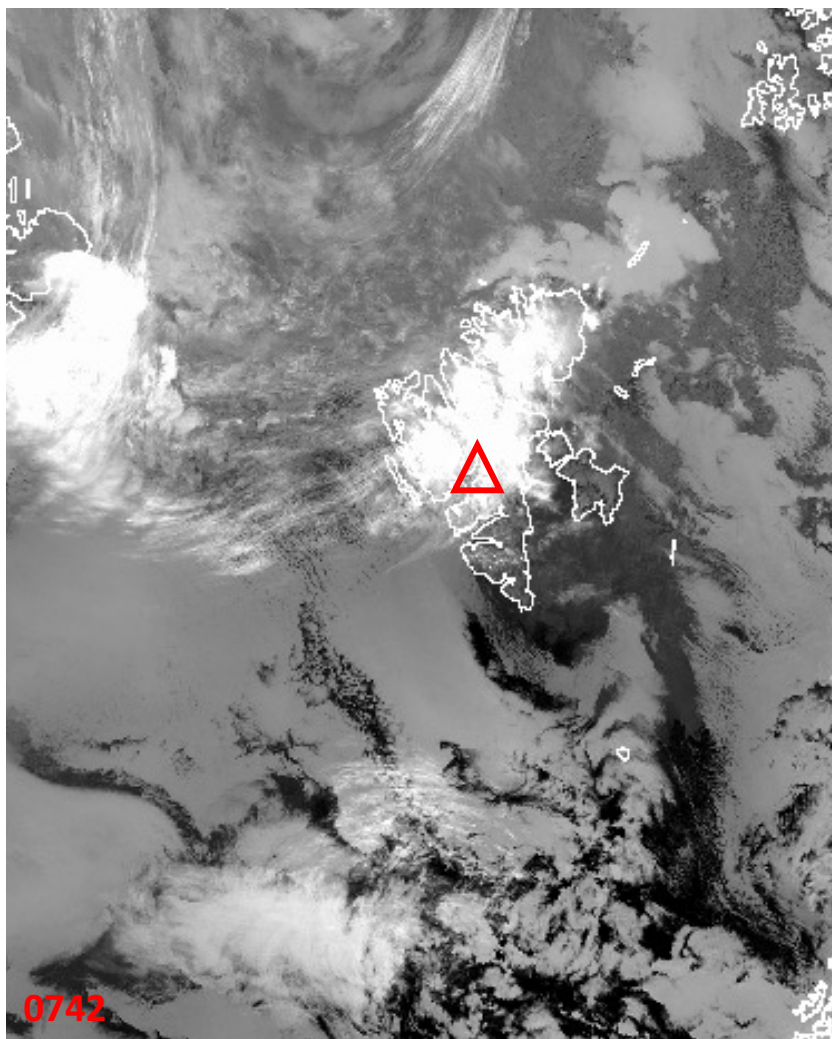
10.8  $\mu\text{m}$



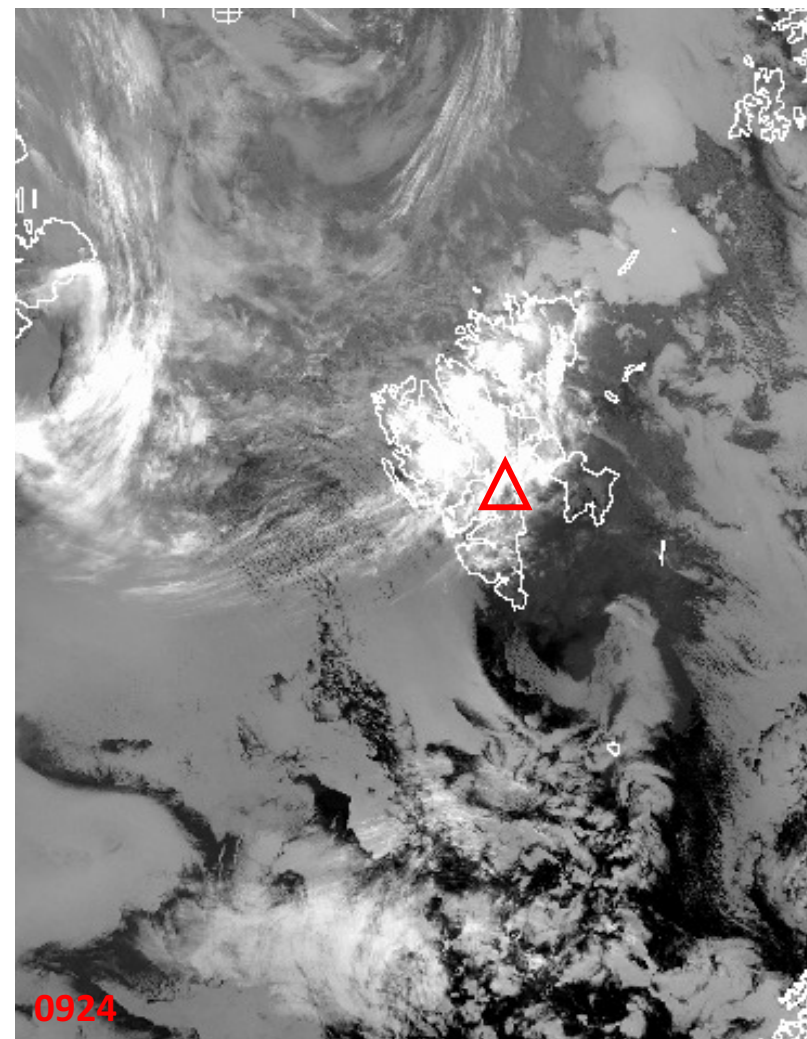
IR, Ch 5+4+3



# NOAA-19 26 May 2017 @ 07420 & 924 UTC



10.8  $\mu\text{m}$



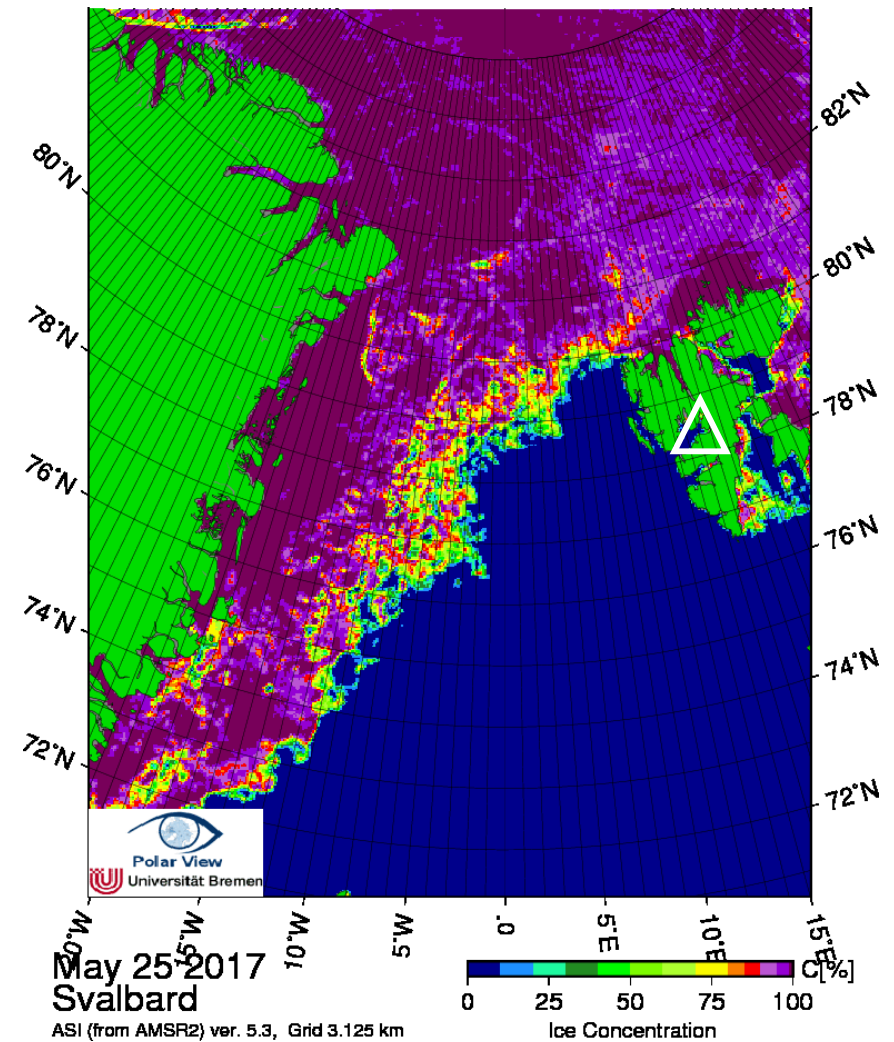
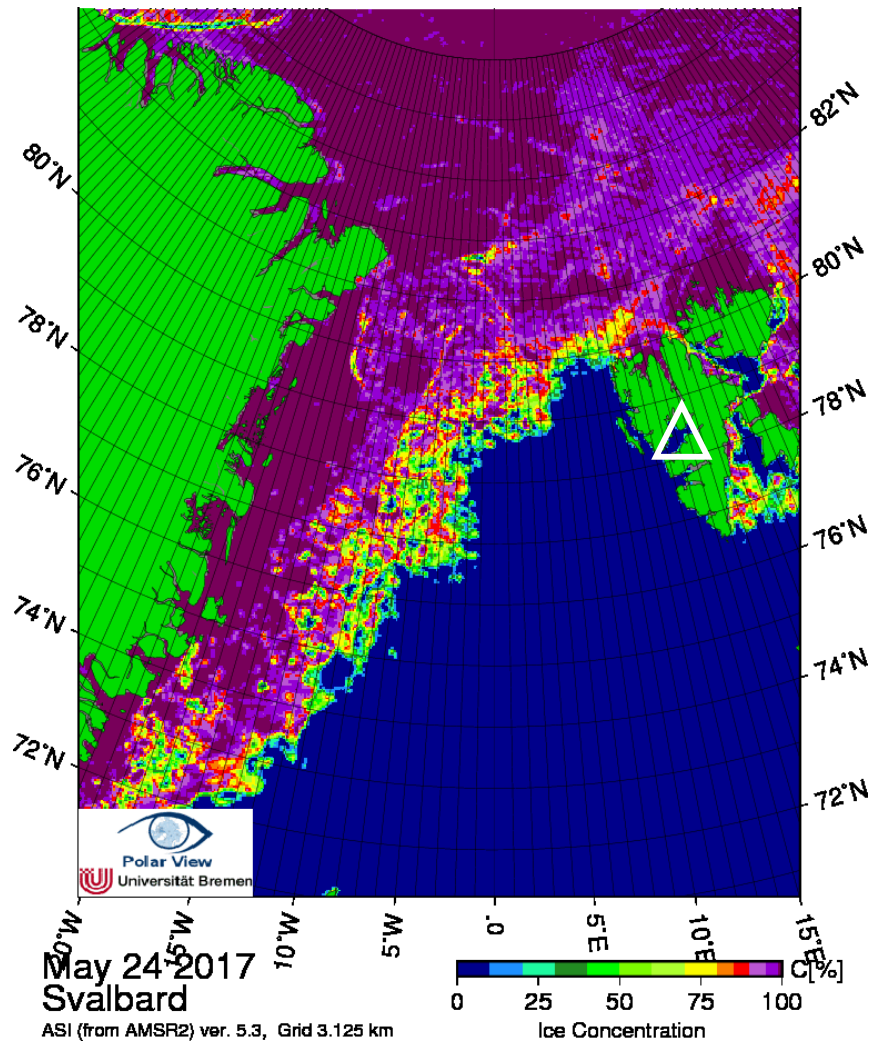
10.8  $\mu\text{m}$

**NOAA 26 May 2017 @ 0300-1200 UTC**

**20170526\_0000**



## Arctic sea ice 24 & 25 May 2017



# Flight Day

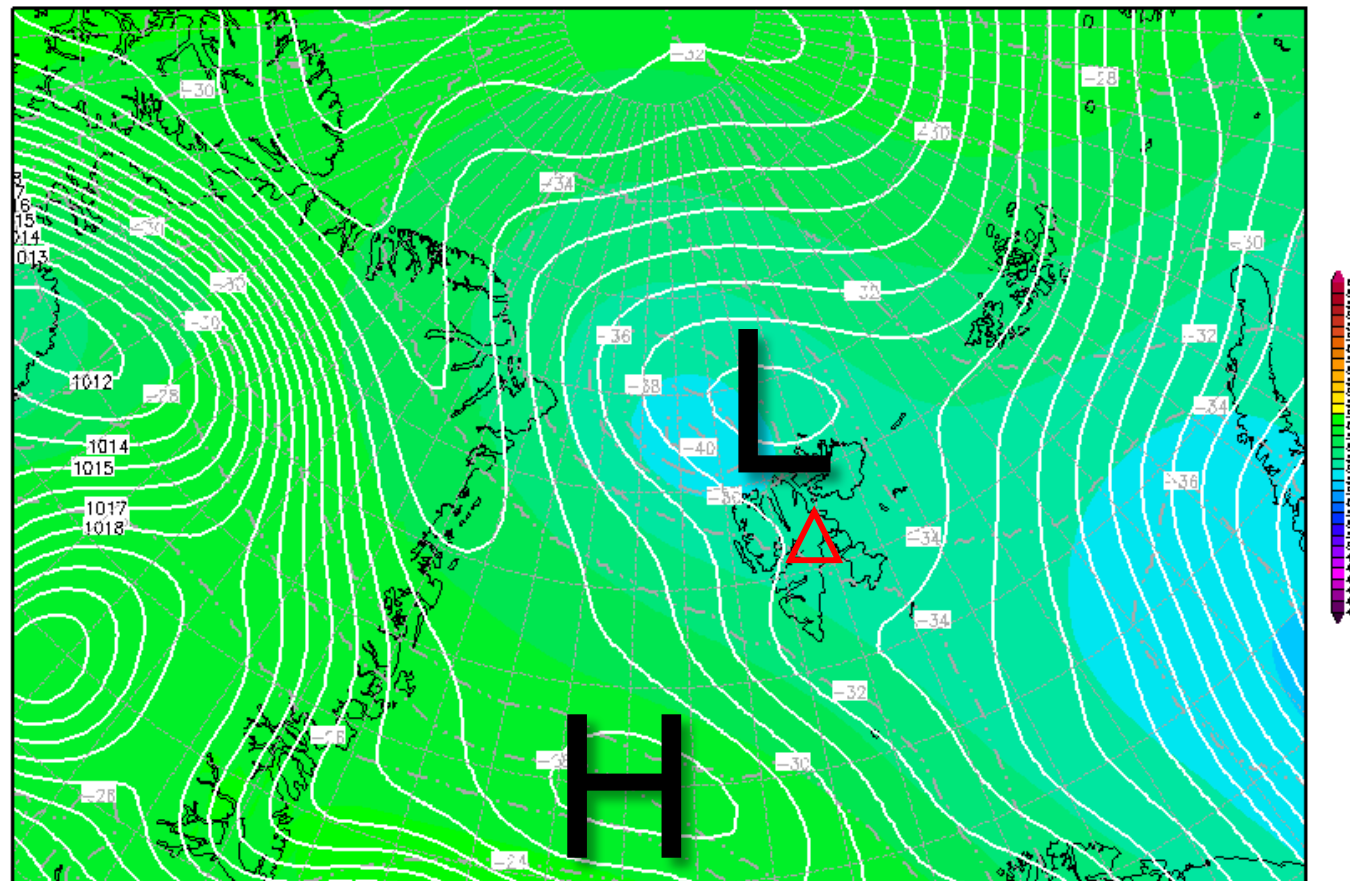
**Sat 27 May 2017**

# 500-hPa Geopotential 27 May 2017 @ 12 UTC

Init : Fri,26MAY2017 00Z

Valid: Sat,27MAY2017 12Z

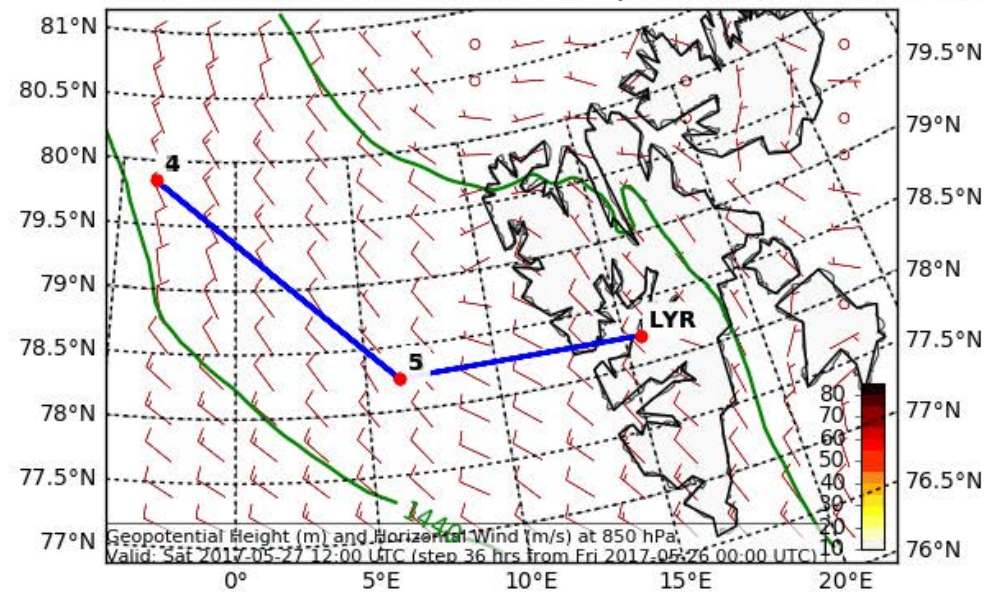
*500 hPa Geopot.(gpdm), T (C) und Bodendr. (hPa)*



# Wind

## Tomorrow 12 UTC

Geopotential Height (m) and Horizontal Wind (m/s) (Wind Speed 10-85 m/s) at 850 (hPa)  
Valid: Sat 2017-05-27 12:00 UTC (step 36 hrs from Fri 2017-05-26 00:00 UTC)



EPSG:77790000

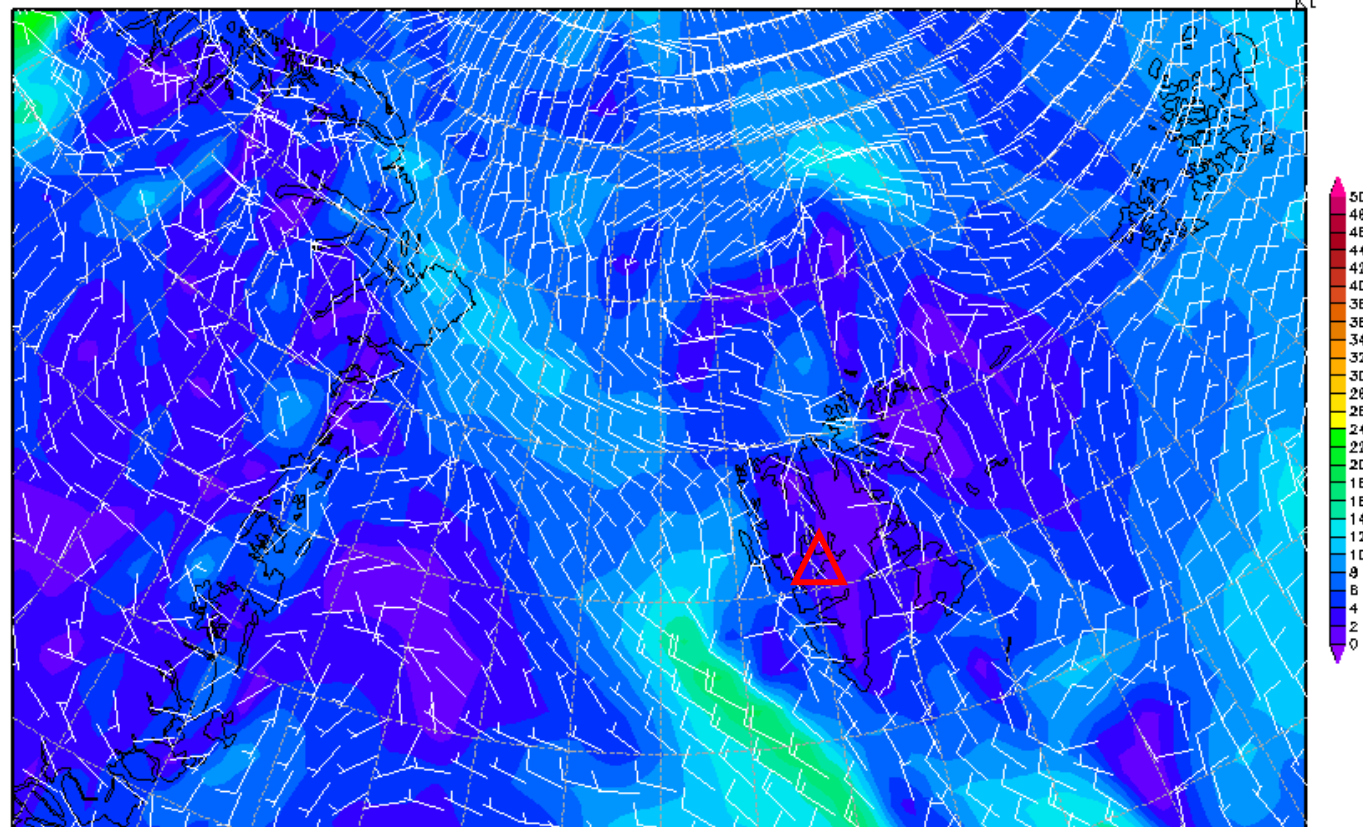


# 10-m Wind 27 May 2017 @ 12 UTC

Init : Fri,26MAY2017 00Z

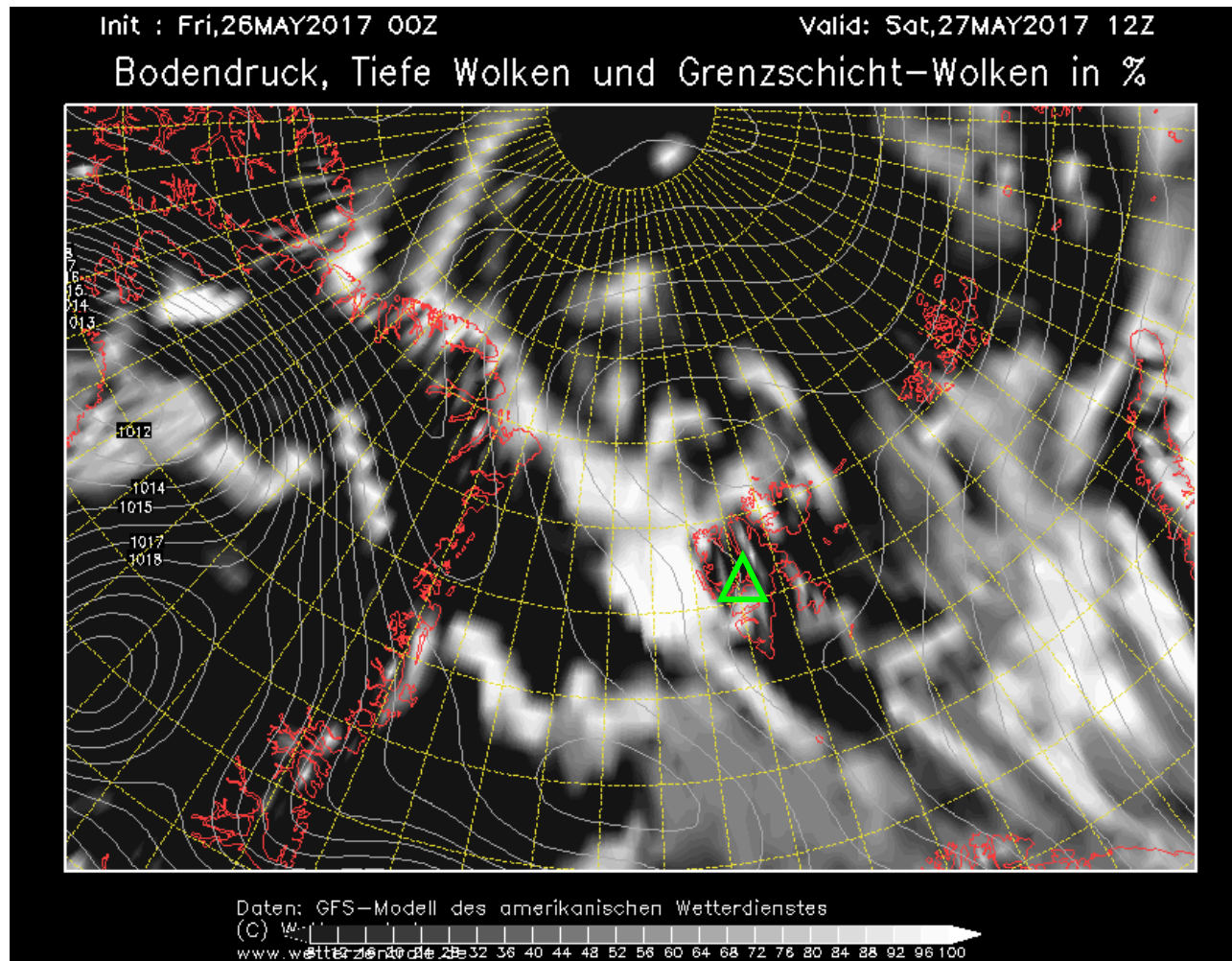
Valid: Sat,27MAY2017 12Z

10m Wind (kt)

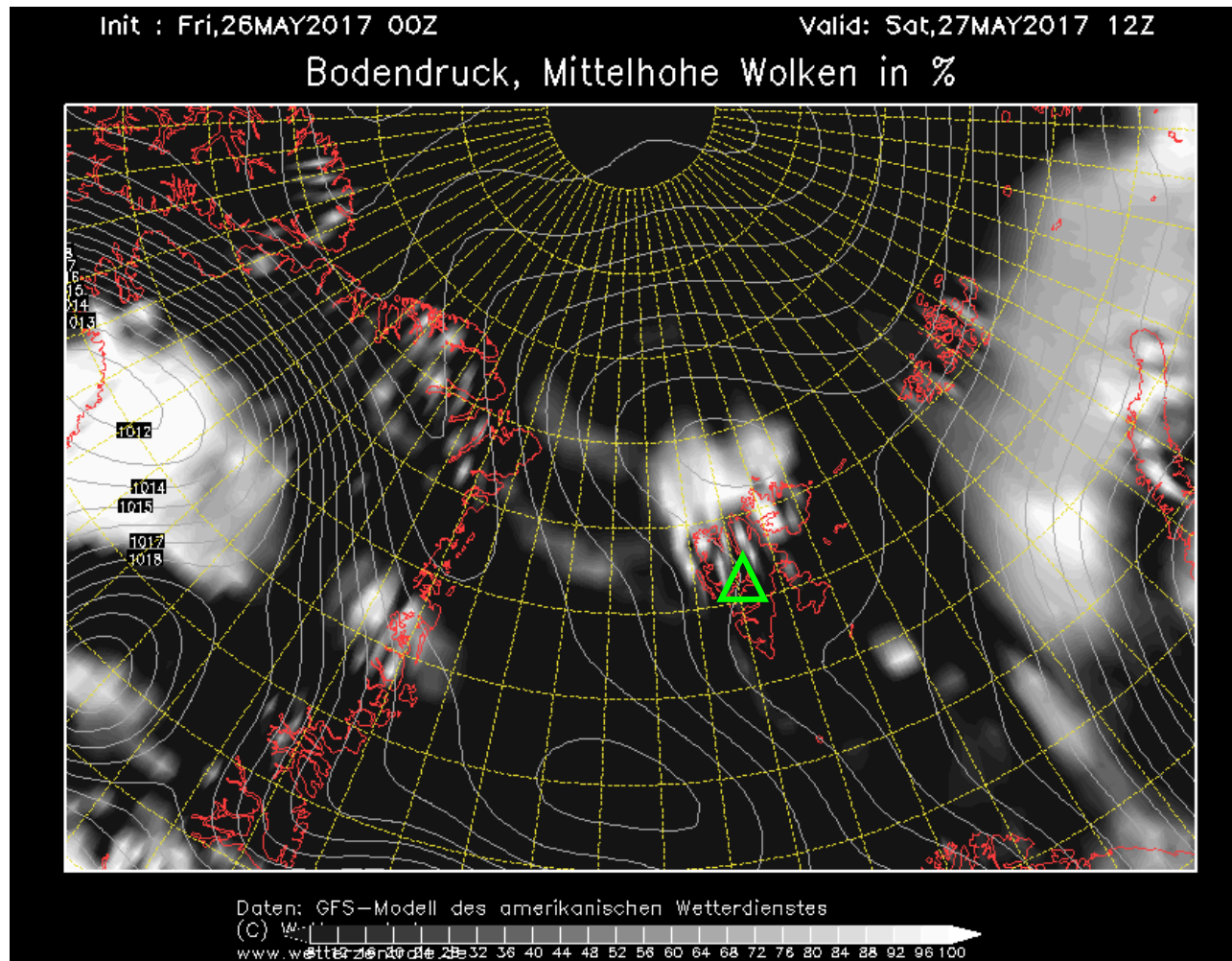


Daten: GFS-Modell des amerikanischen Wetterdienstes  
(C) Wetterzentrale  
[www.wetterzentrale.de](http://www.wetterzentrale.de)

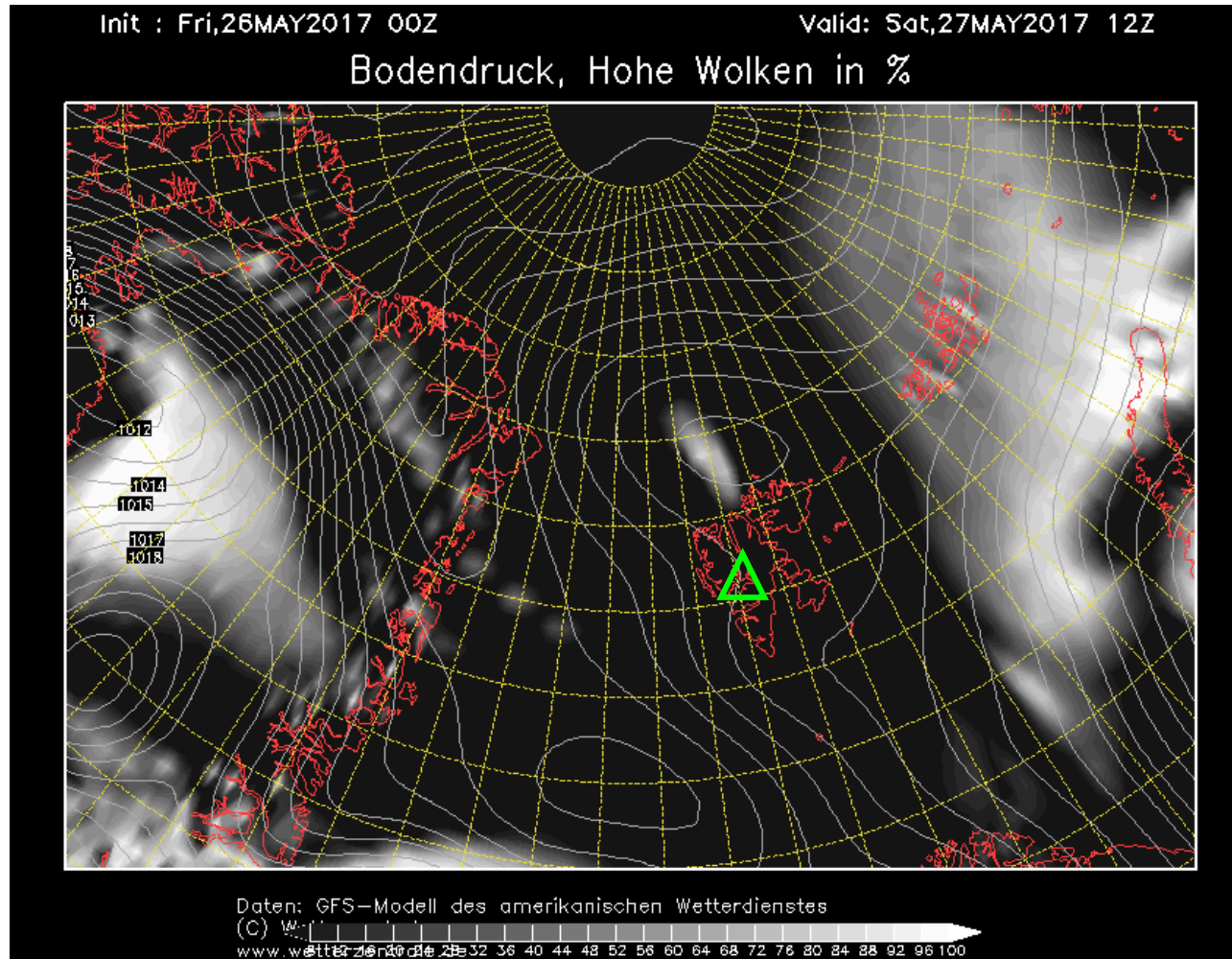
## Low-level cloud cover 27 May 2017 @ 12 UTC



## Mid-level cloud cover 27 May 2017 @ 12 UTC



# High-level cloud cover 27 May 2017 @ 12 UTC

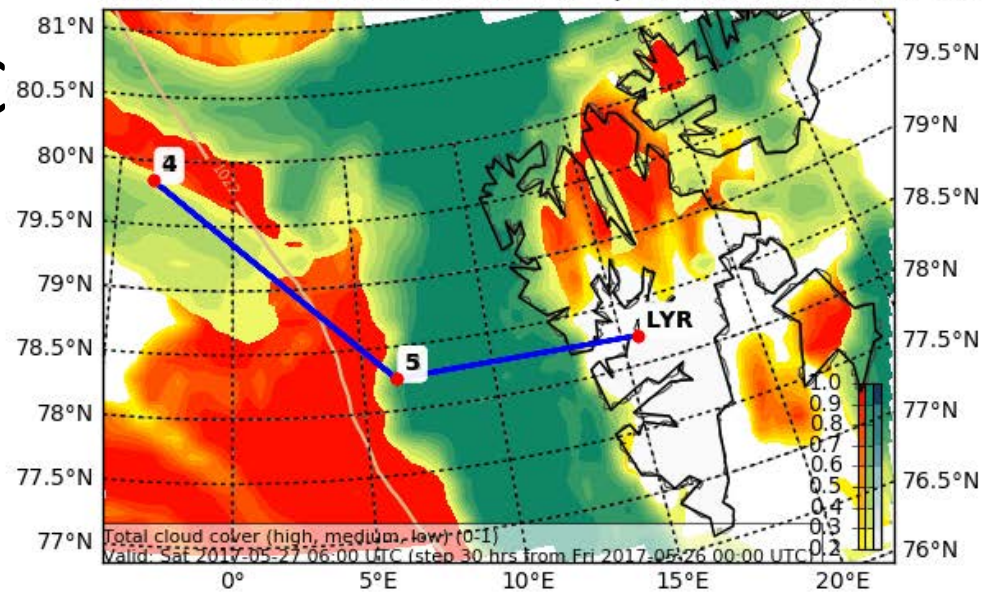




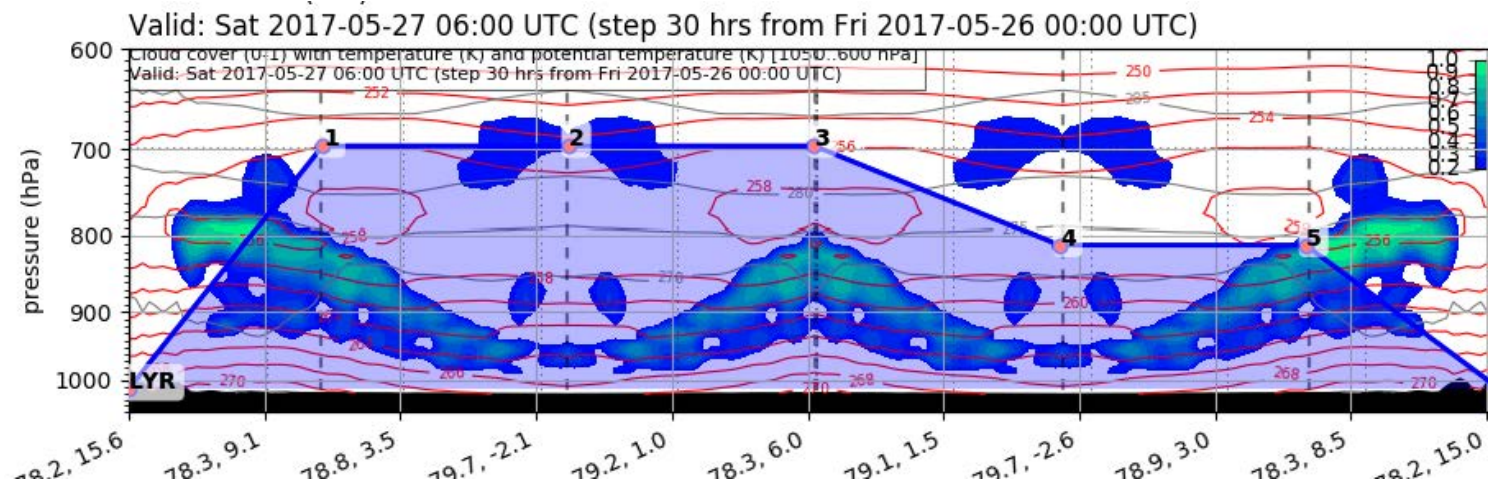
# Forecast Tomorrow 06 UTC

Cloud Cover (0-1) (Total Cloud Cover)

Valid: Sat 2017-05-27 06:00 UTC (step 30 hrs from Fri 2017-05-26 00:00 UTC)



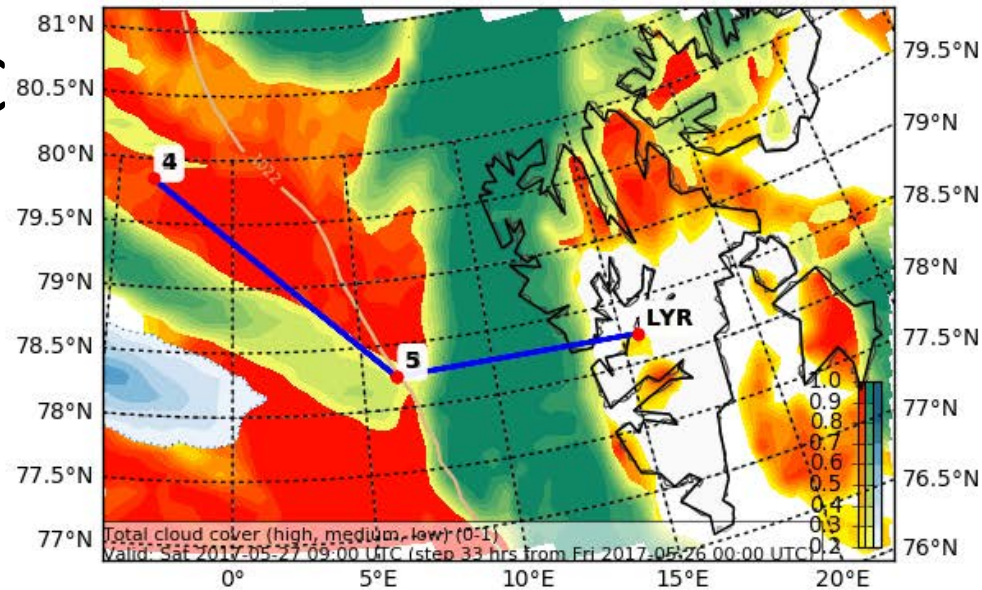
EPSG:77790000



# Forecast Tomorrow 09 UTC

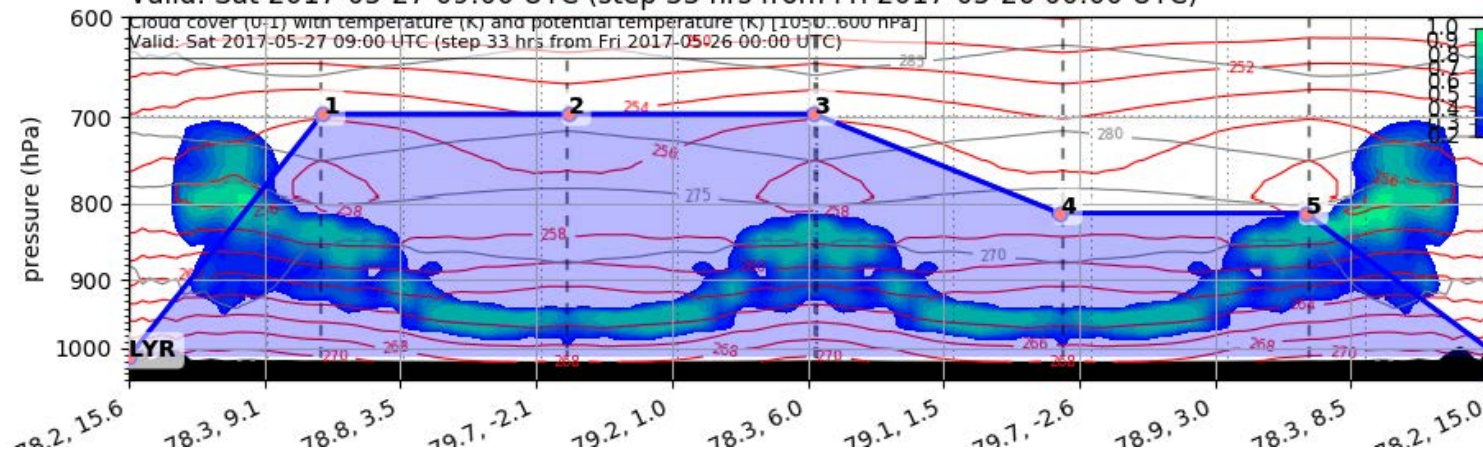
Cloud Cover (0-1) (Total Cloud Cover)

Valid: Sat 2017-05-27 09:00 UTC (step 33 hrs from Fri 2017-05-26 00:00 UTC)



EPSG:77790000

Valid: Sat 2017-05-27 09:00 UTC (step 33 hrs from Fri 2017-05-26 00:00 UTC)

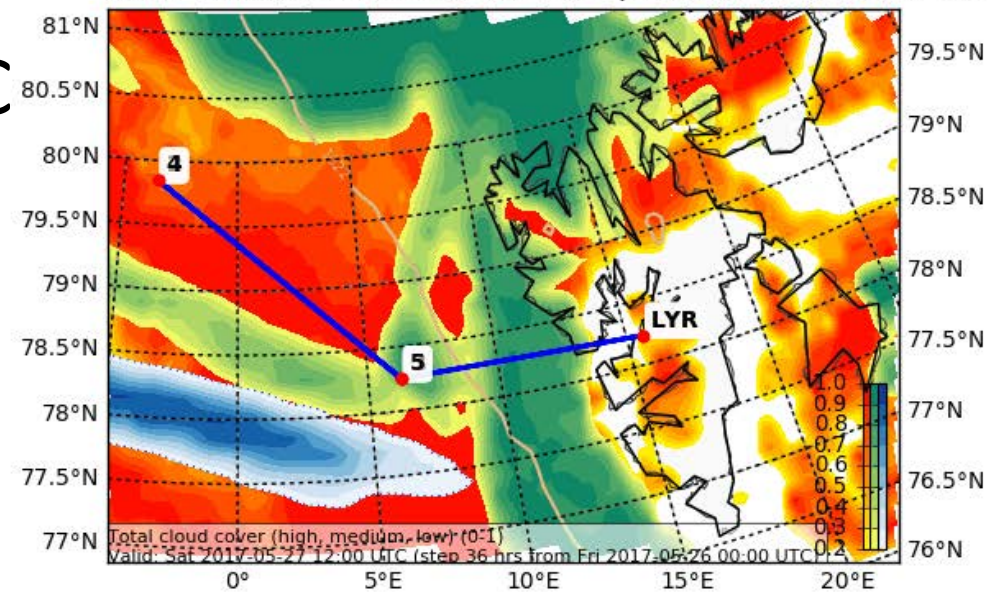




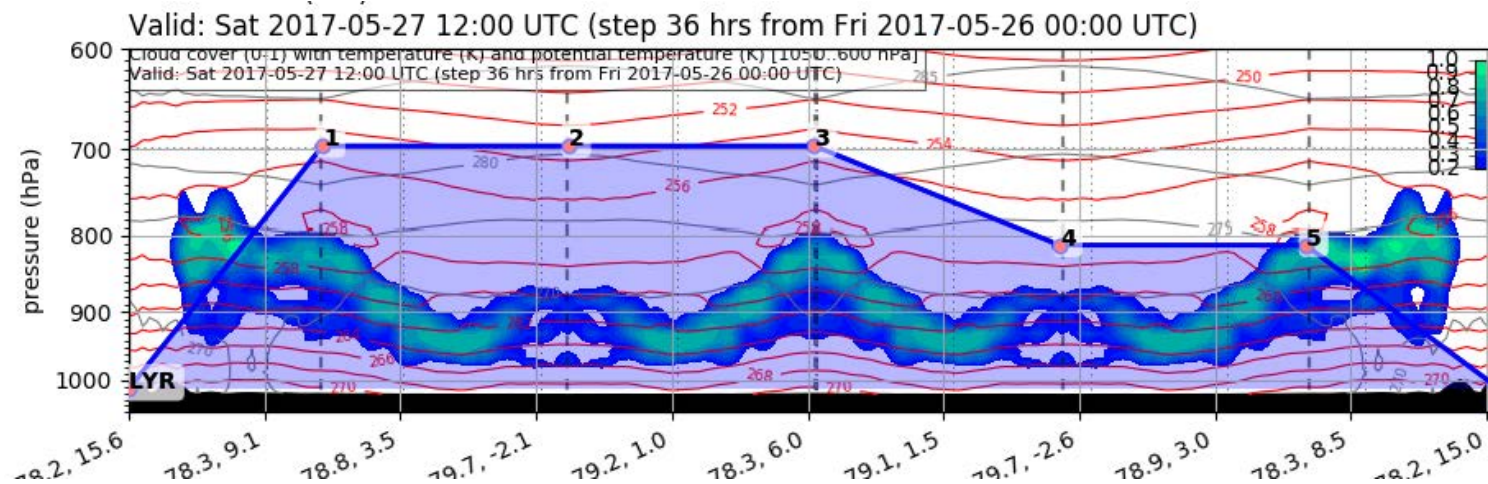
# Forecast Tomorrow 12 UTC

Cloud Cover (0-1) (Total Cloud Cover)

Valid: Sat 2017-05-27 12:00 UTC (step 36 hrs from Fri 2017-05-26 00:00 UTC)



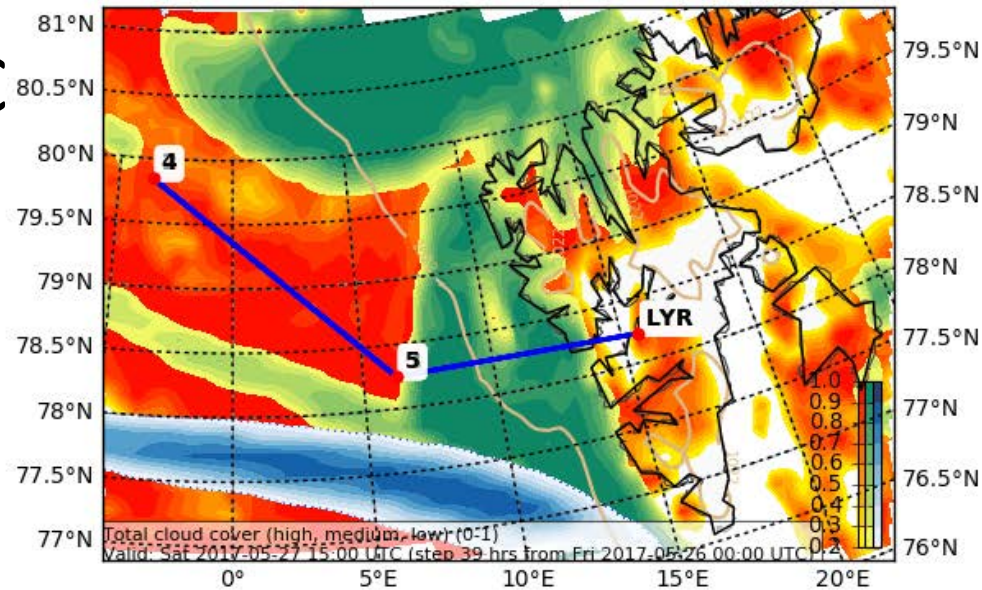
EPSG:77790000



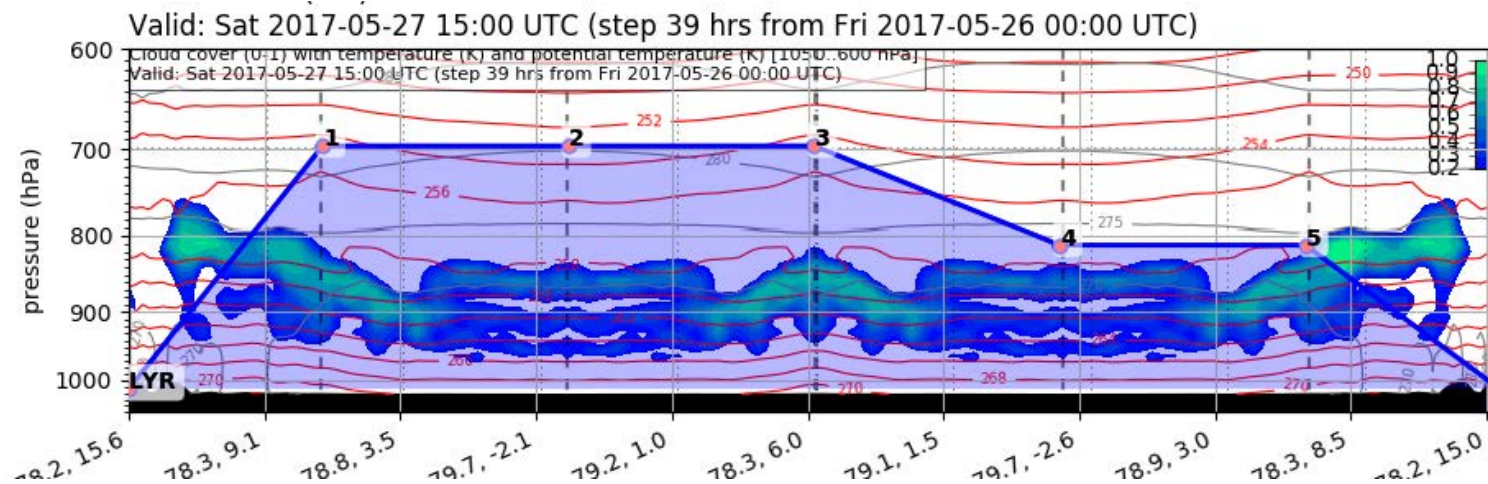
# Forecast Tomorrow 15 UTC

Cloud Cover (0-1) (Total Cloud Cover)

Valid: Sat 2017-05-27 15:00 UTC (step 39 hrs from Fri 2017-05-26 00:00 UTC)



EPSG:77790000

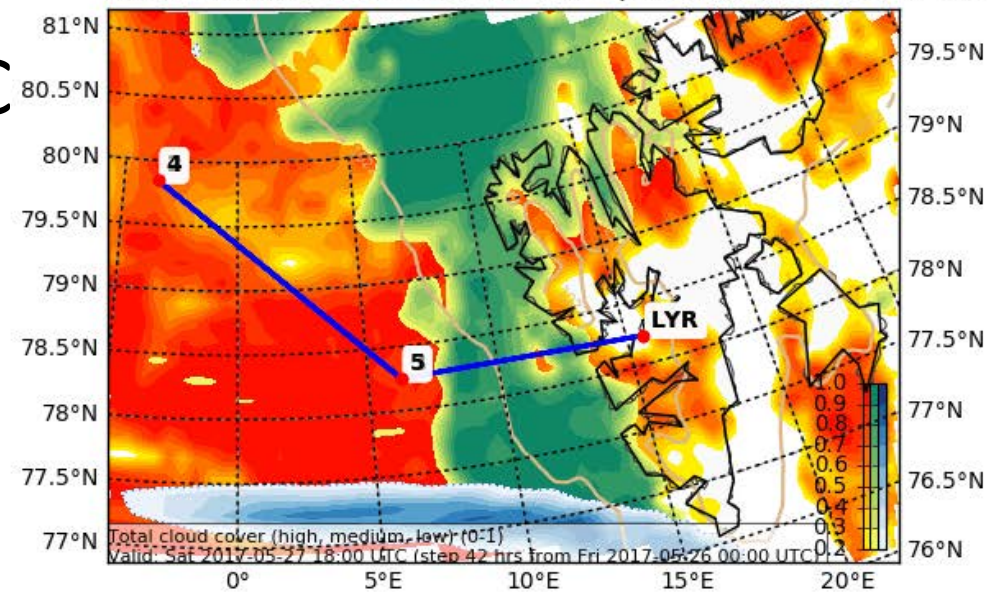




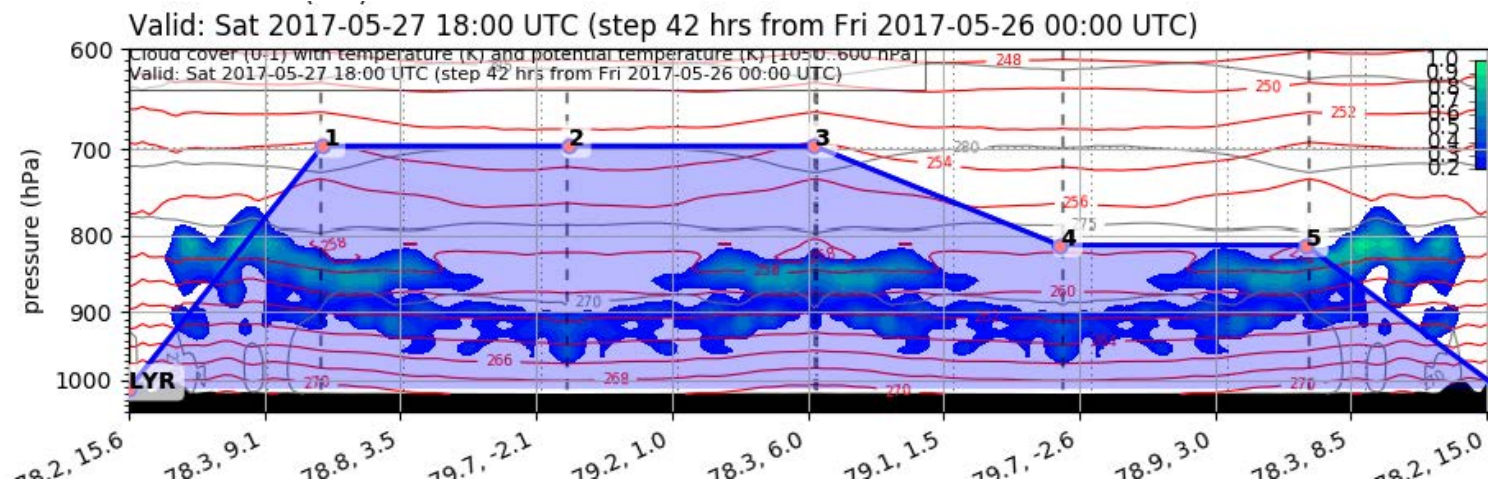
# Forecast Tomorrow 18 UTC

Cloud Cover (0-1) (Total Cloud Cover)

Valid: Sat 2017-05-27 18:00 UTC (step 42 hrs from Fri 2017-05-26 00:00 UTC)



EPSG:77790000

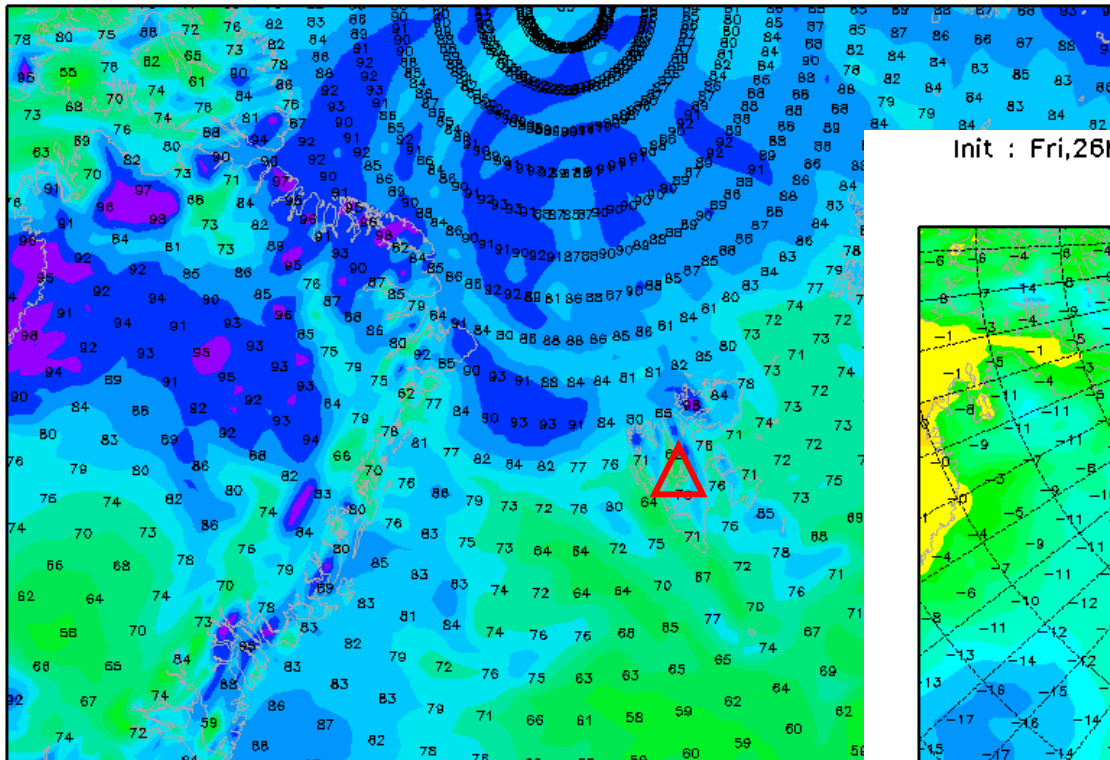


# 2-m rel. hum. & temp. 27 May 2017 @ 12 UTC

Init : Fri,26MAY2017 00Z

Valid: Sat,27MAY2017 12Z

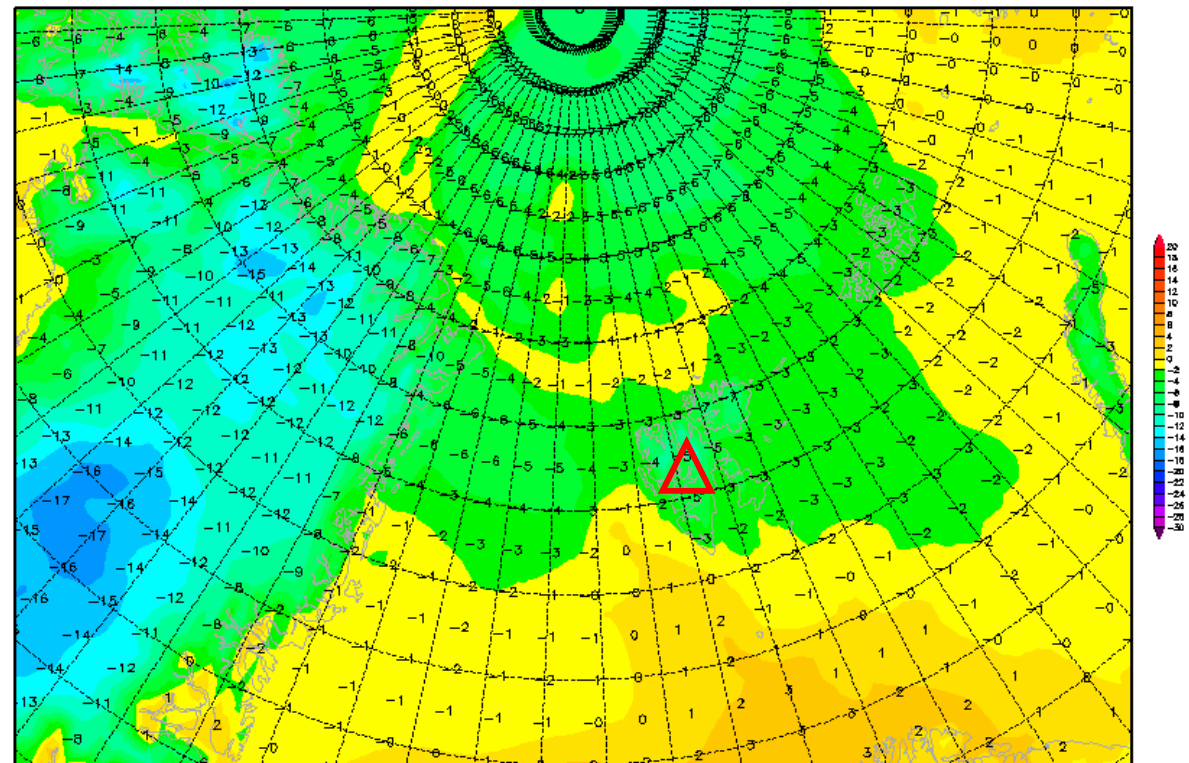
*2m Rel. Feuchte in %*



Init : Fri,26MAY2017 00Z

Valid: Sat,27MAY2017 12Z

*2m Temperatur (°C)*

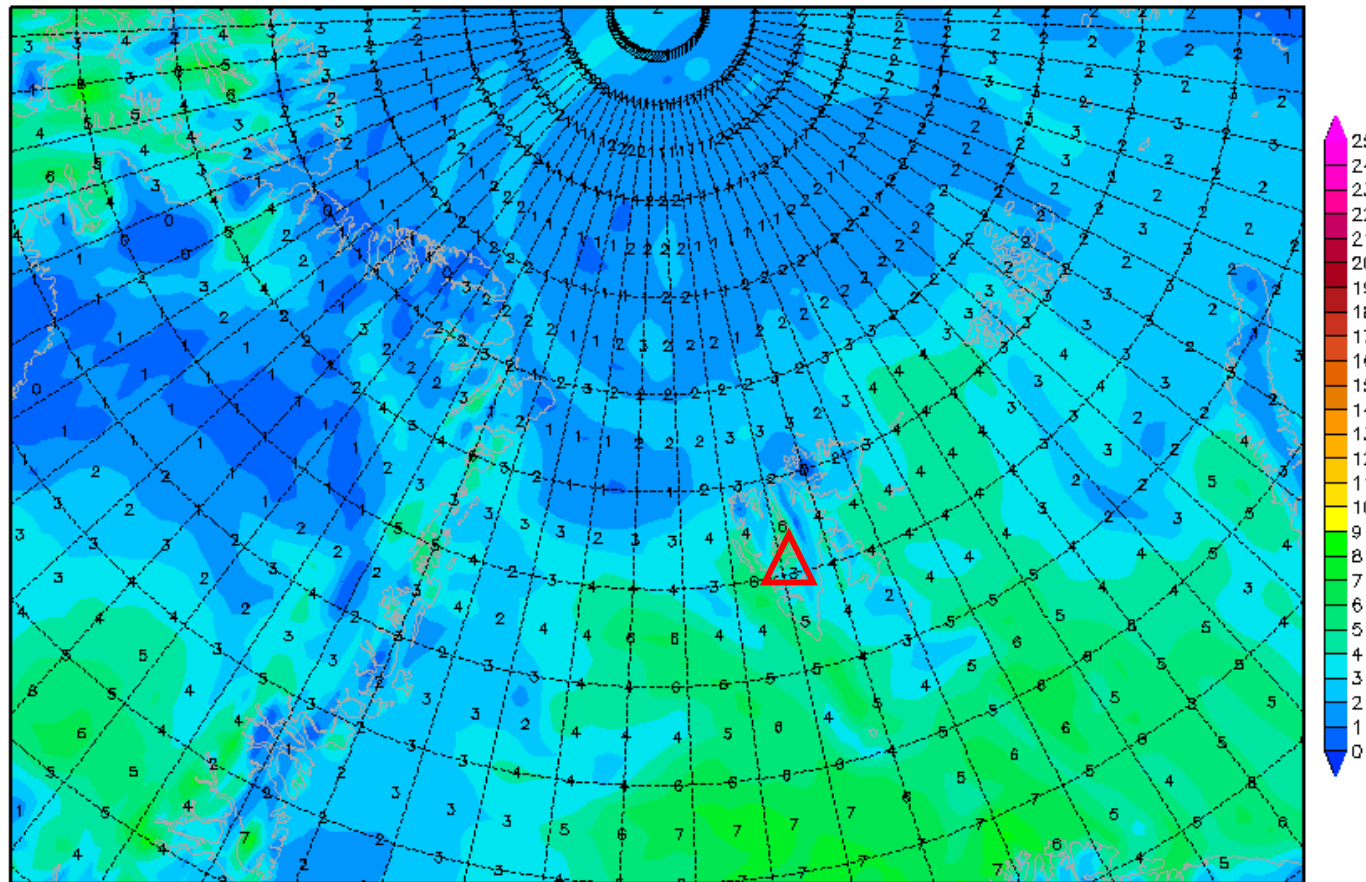


# 2-m dew point diff. 27 May 2017 @ 12 UTC

Init : Fri,26MAY2017 00Z

Valid: Sat,27MAY2017 12Z

*2m (Temperatur-Taupunkt)*



Daten: GFS  
(C) Wetterzentrale  
[www.wetterzentrale.de](http://www.wetterzentrale.de)

# Outlook

**Sun 28 May – Mon 29 May 2017**

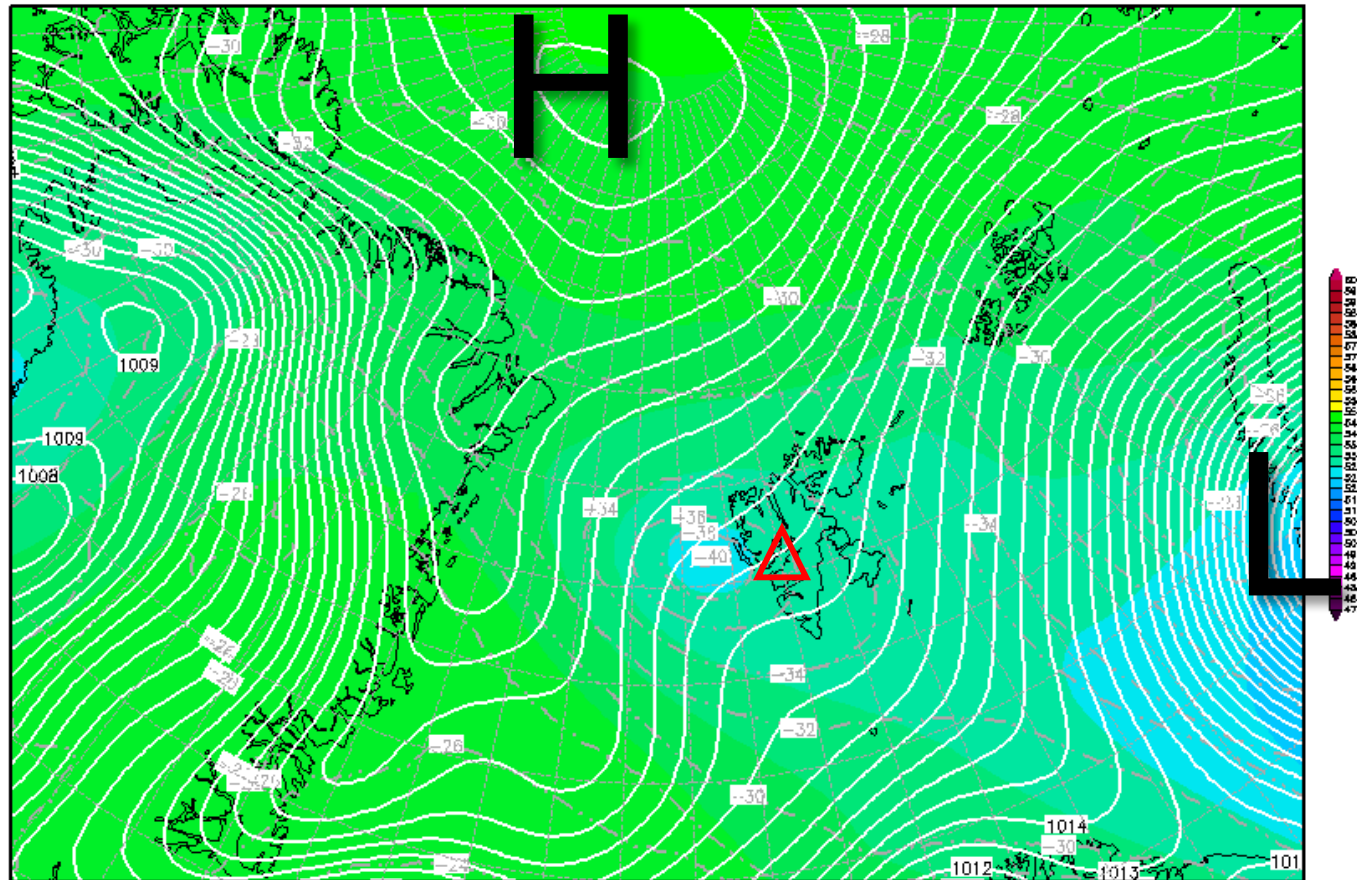


Sun 28 May 2017

Init : Fri,26MAY2017 00Z

Valid: Sun,28MAY2017 12Z

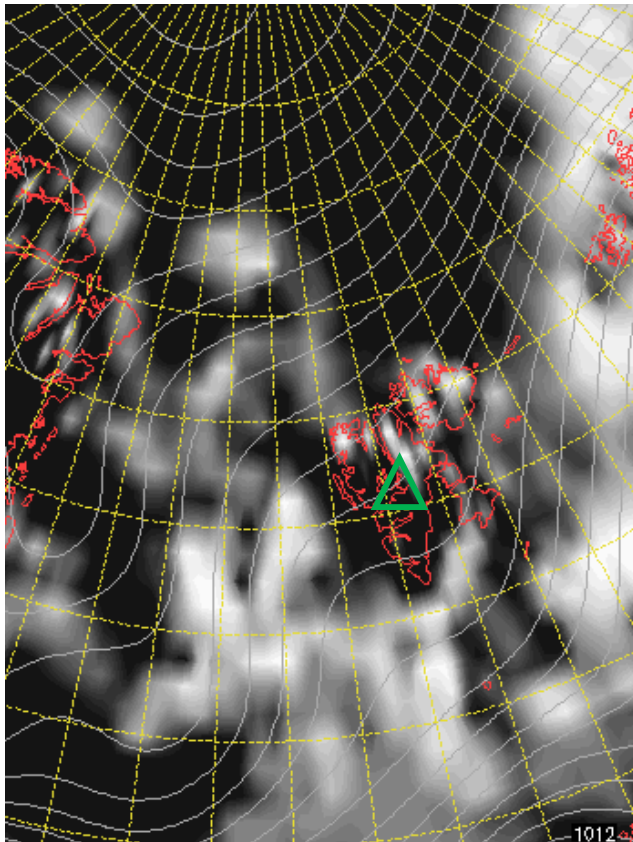
500 hPa Geopot.(gpdm), T (C) und Bodendr. (hPa)



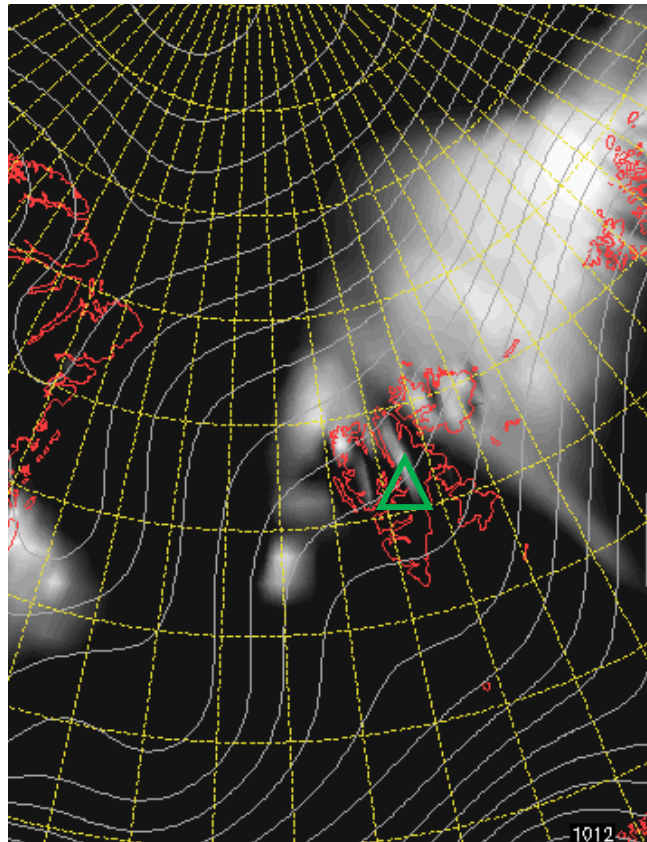
Surf. Pressure &  
500-hPa Theta Equiv.  
28 May 2017 @ 12 UTC

## Cloud Cover 28 May 2017 @ 12 UTC

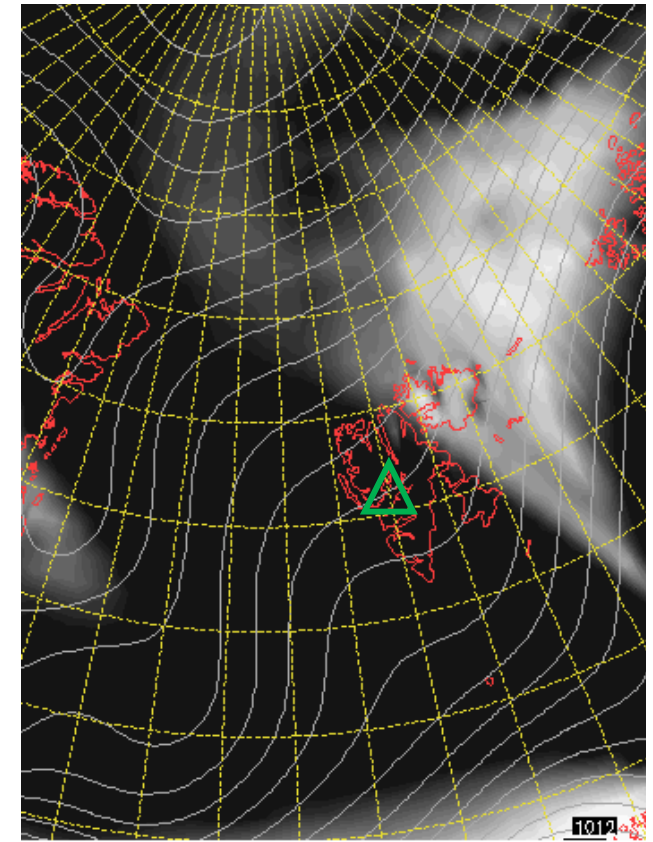
L



M



H

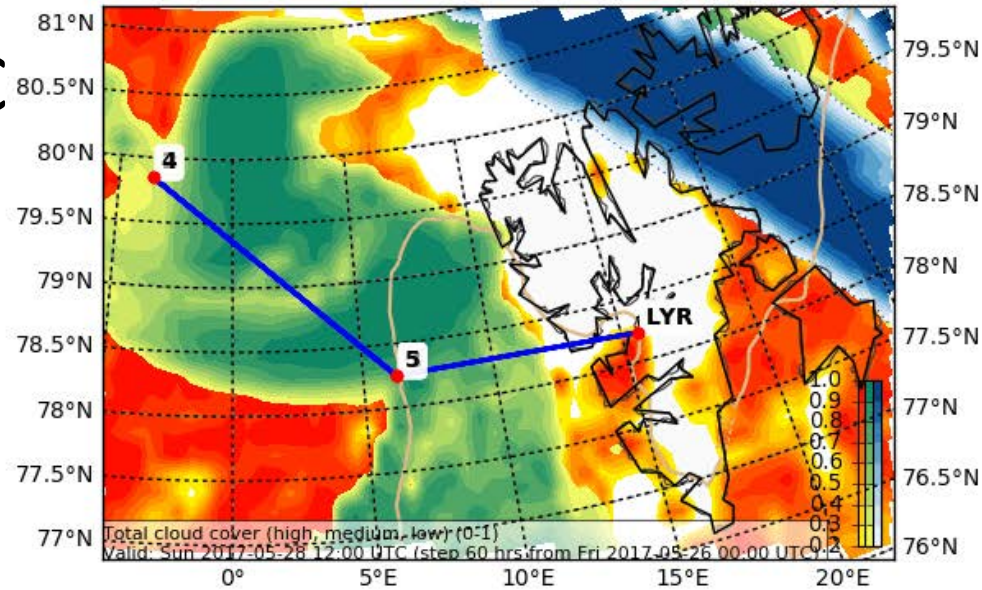




# Forecast After Tomorrow 12 UTC

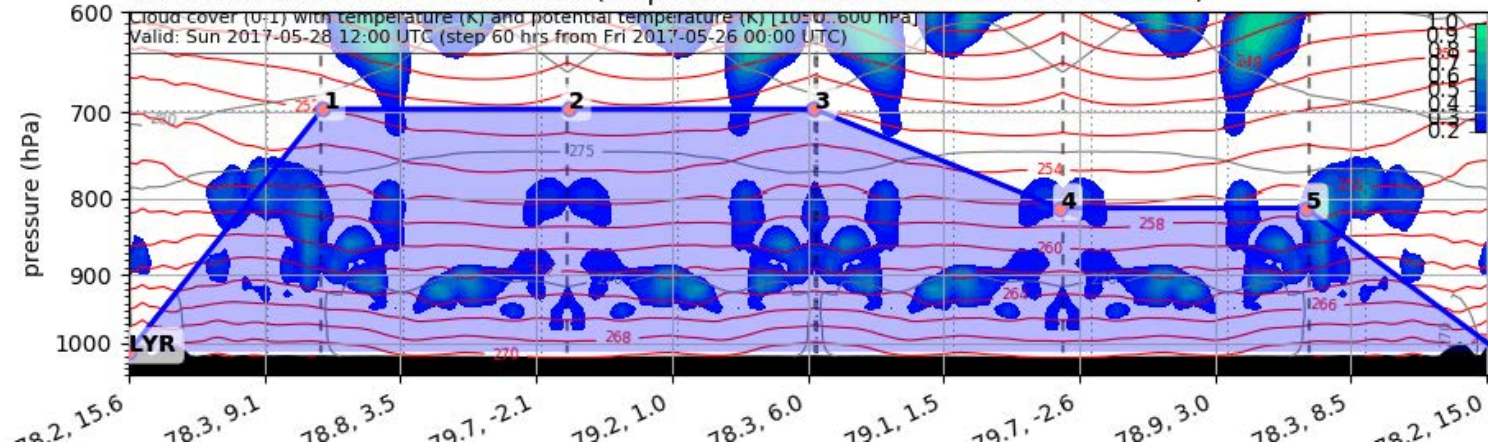
Cloud Cover (0-1) (Total Cloud Cover)

Valid: Sun 2017-05-28 12:00 UTC (step 60 hrs from Fri 2017-05-26 00:00 UTC)



EPSG:77790000

Valid: Sun 2017-05-28 12:00 UTC (step 60 hrs from Fri 2017-05-26 00:00 UTC)

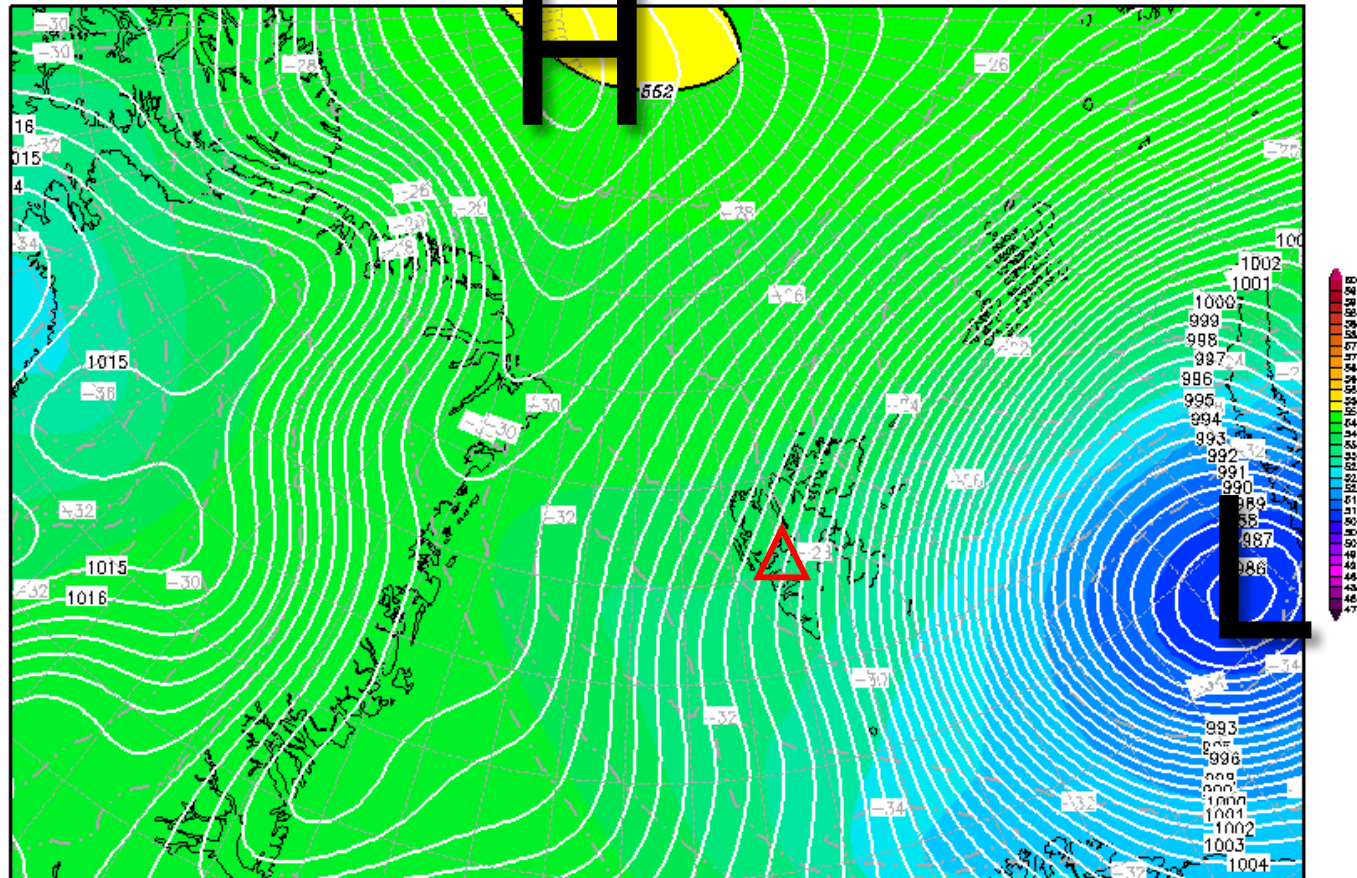


# Mon 29 May 2017

Init : Fri,26MAY2017 00Z

Valid: Mon,29MAY2017 12Z

500 hPa Geopot.(gpm), T (C) und Bodendr. (hPa)

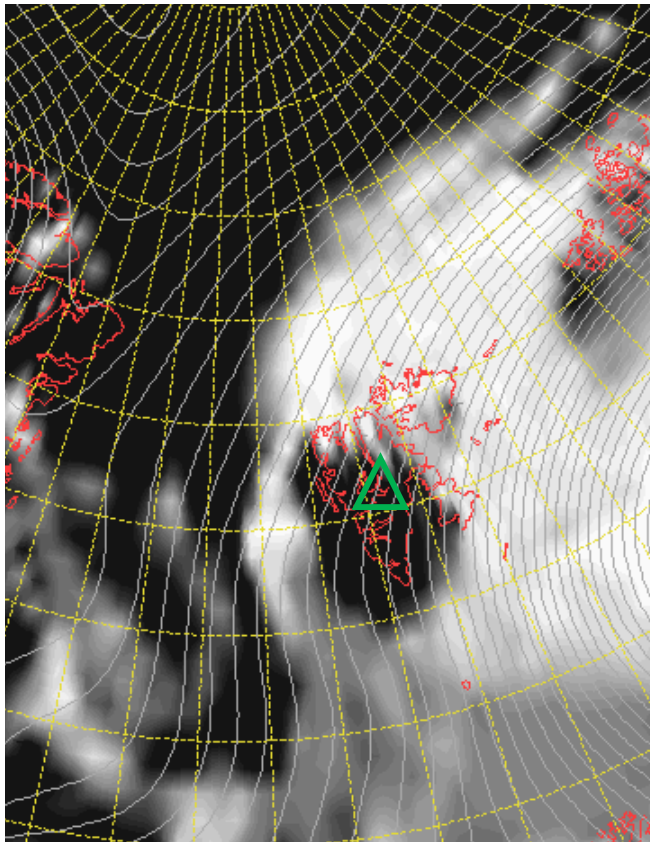


Surf. Pressure &  
500-hPa Geopot.  
29 May 2017 @ 12 UTC

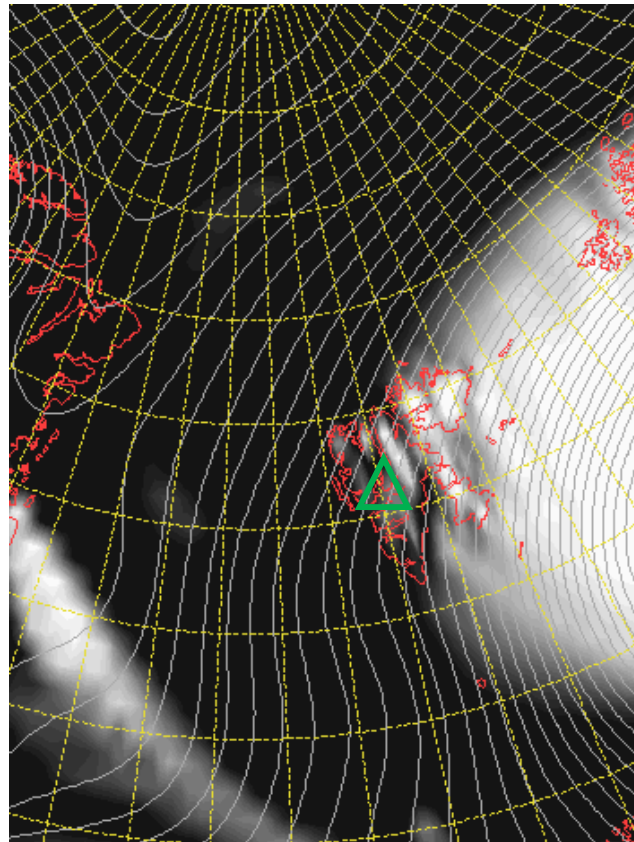


## Cloud Cover 29 May 2017 @ 12 UTC

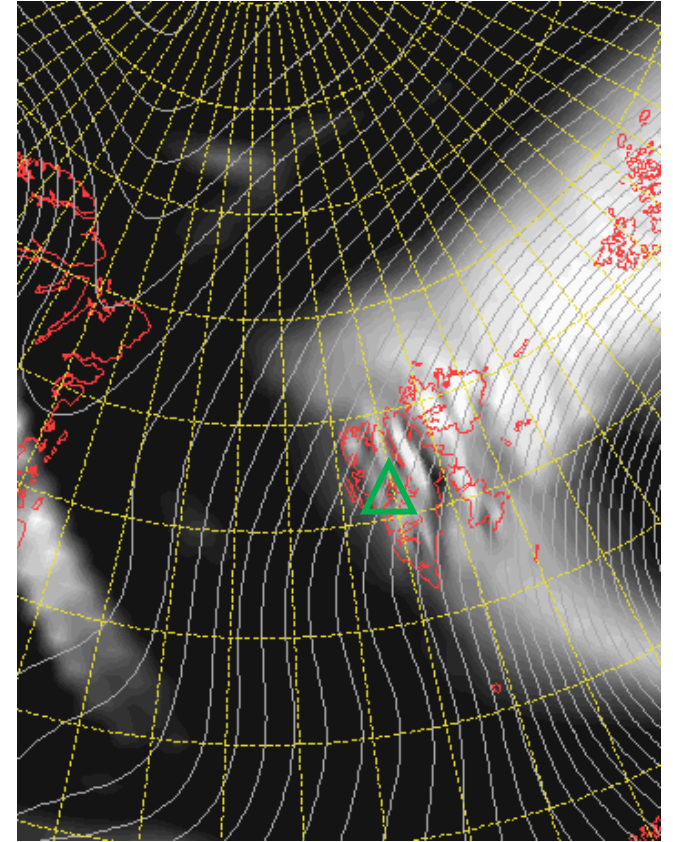
L



M



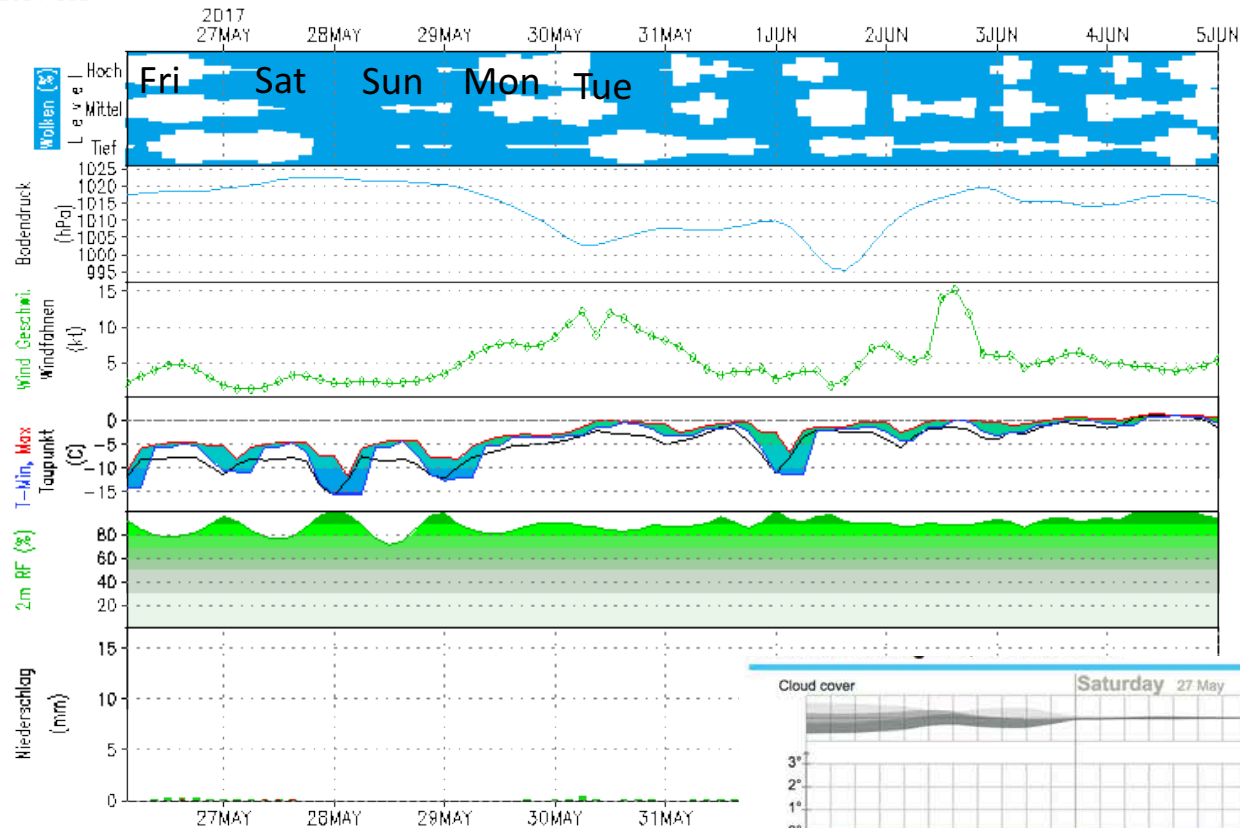
H



# GFS – Meteogramm

Lon: 15.63 Lat: 78.22 Hgt: 331m

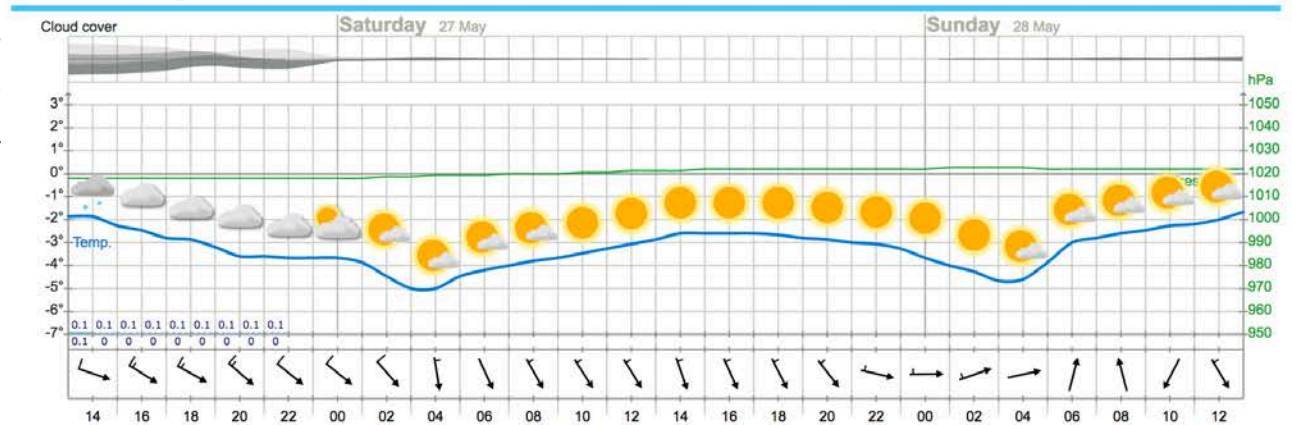
Lauf: 00Z



Heute kein Sonnenaufgang  
Heute kein Sonnenuntergang

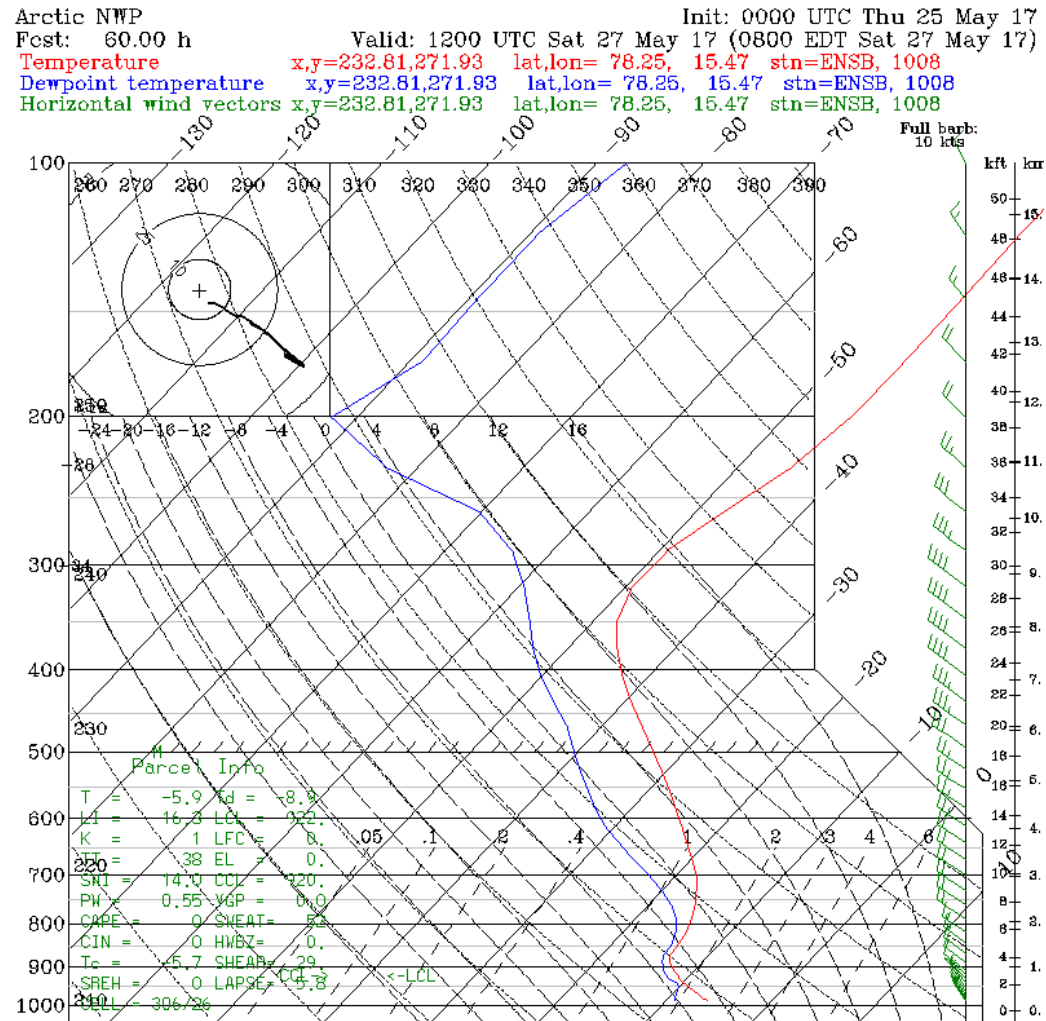
## Outlook – Meteogram

YR.no





# Sounding Longyearbyen 27 May 2017 @ 12 UTC





# Precip. Water 26 May 2017

GFS 0.25°x0.25°  
Daily Average

Precipitable Water  
Friday, May 26, 2017

