

# Weather briefing

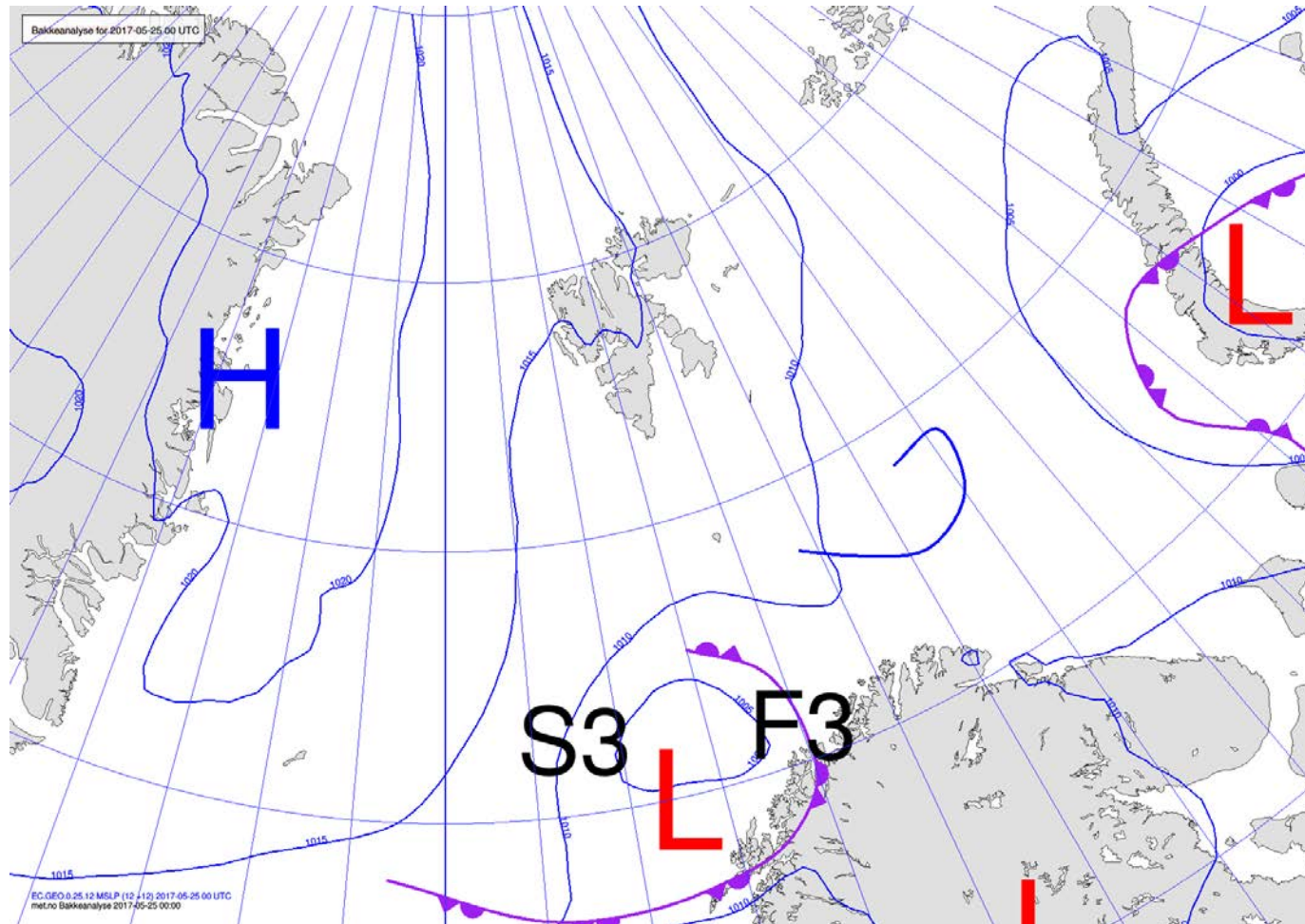
ACLOUD Longyearbyen, Svalbard

Thu 25 May 2017 – **Frihu 26 May** – Sun 28 May 2017

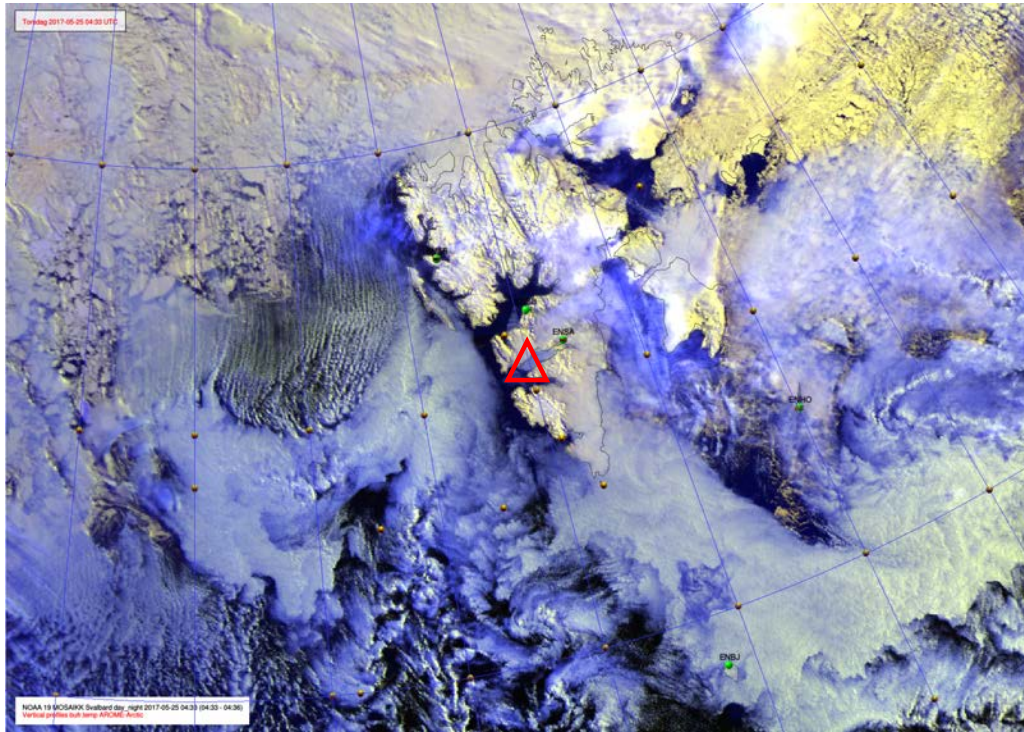
## **Summary**

A high on Greenland directs a northerly airflow over Svalbard area – Arctic cold-air-outbreak. Scattered snow showers in north areas, in central regions cloudy or fair and dry. On the east coast cloudy and dry.

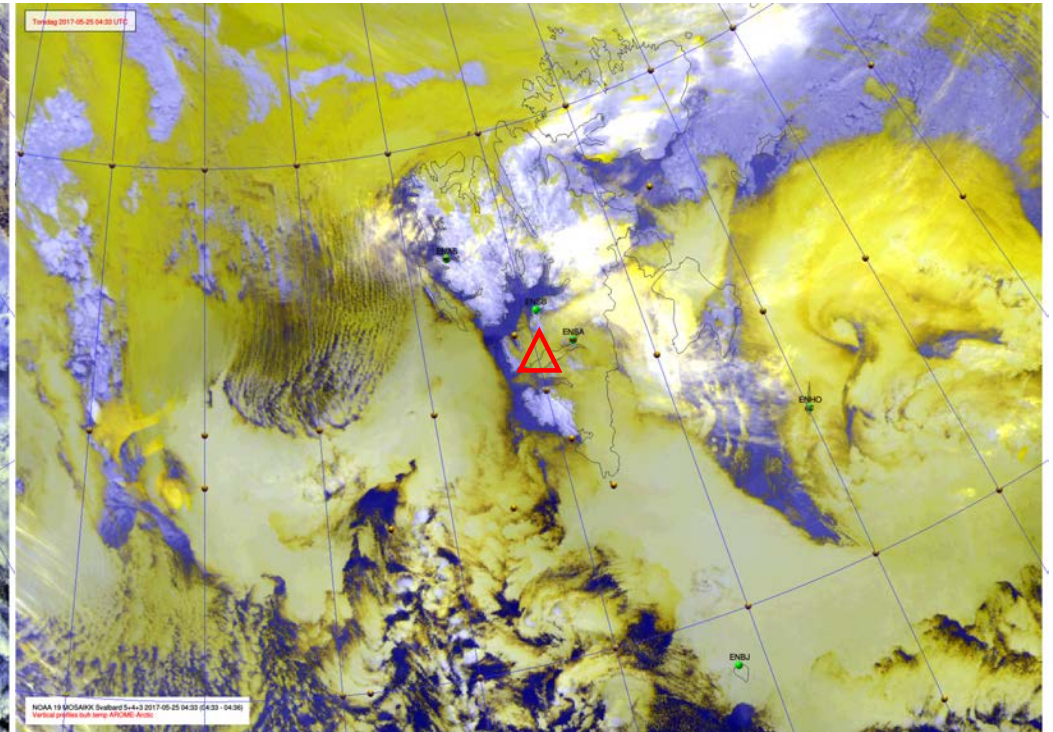
## Analysis 25 May 2017 @ 00 UTC



# NOAA-19 25 May 2017 @ 0433 UTC



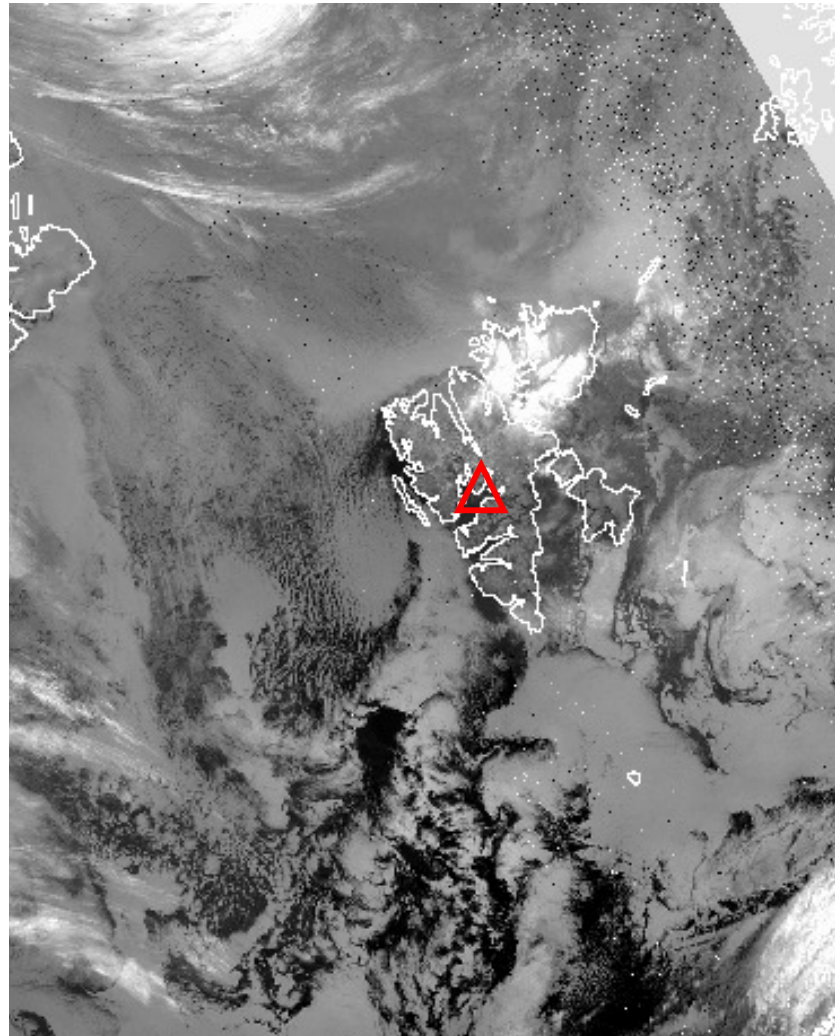
10.8  $\mu\text{m}$



IR, Ch 5+4+3

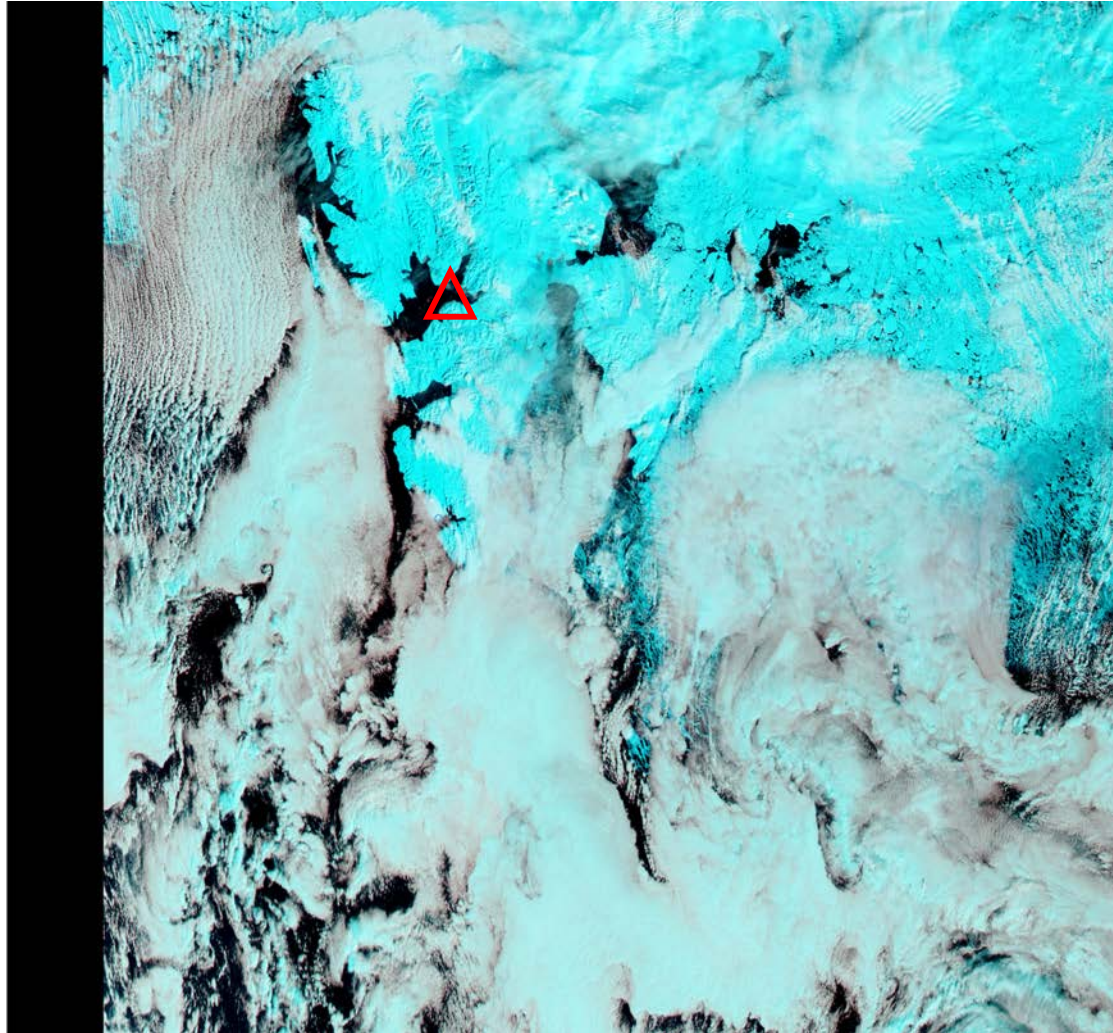


**NOAA-19 25 May 2017 @ 1012 UTC**



**10.8  $\mu\text{m}$**

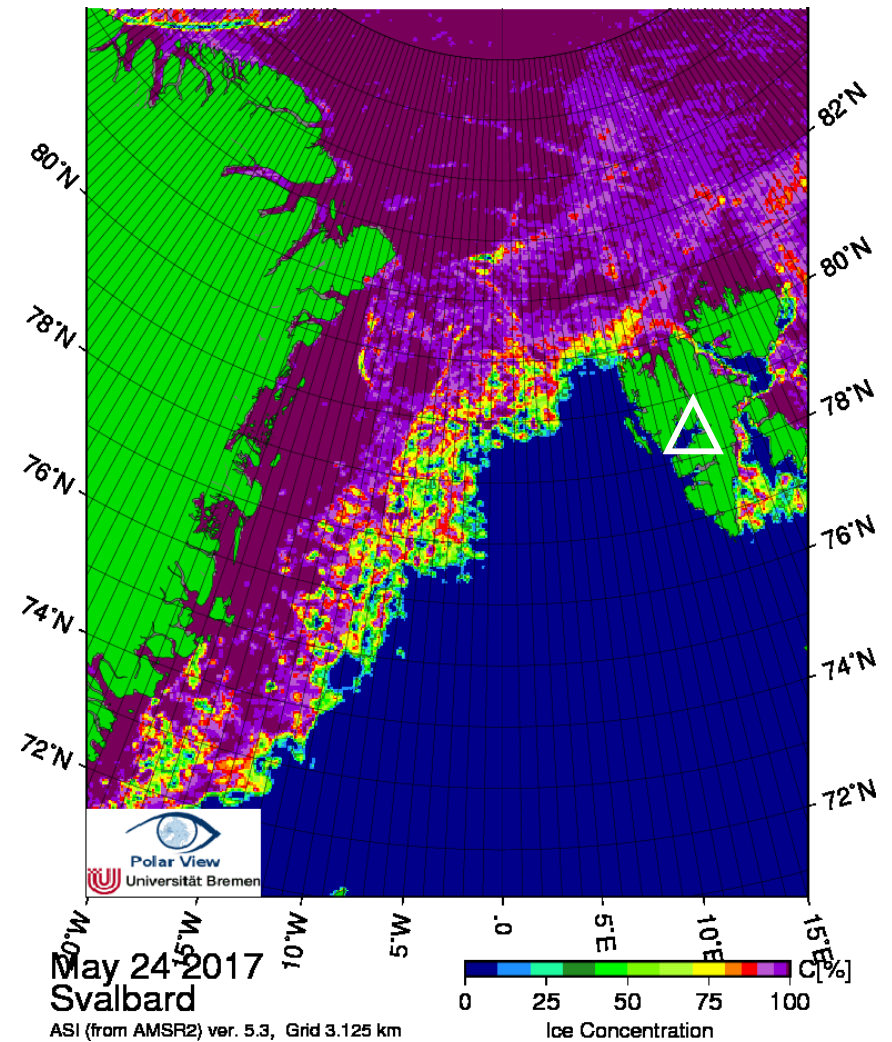
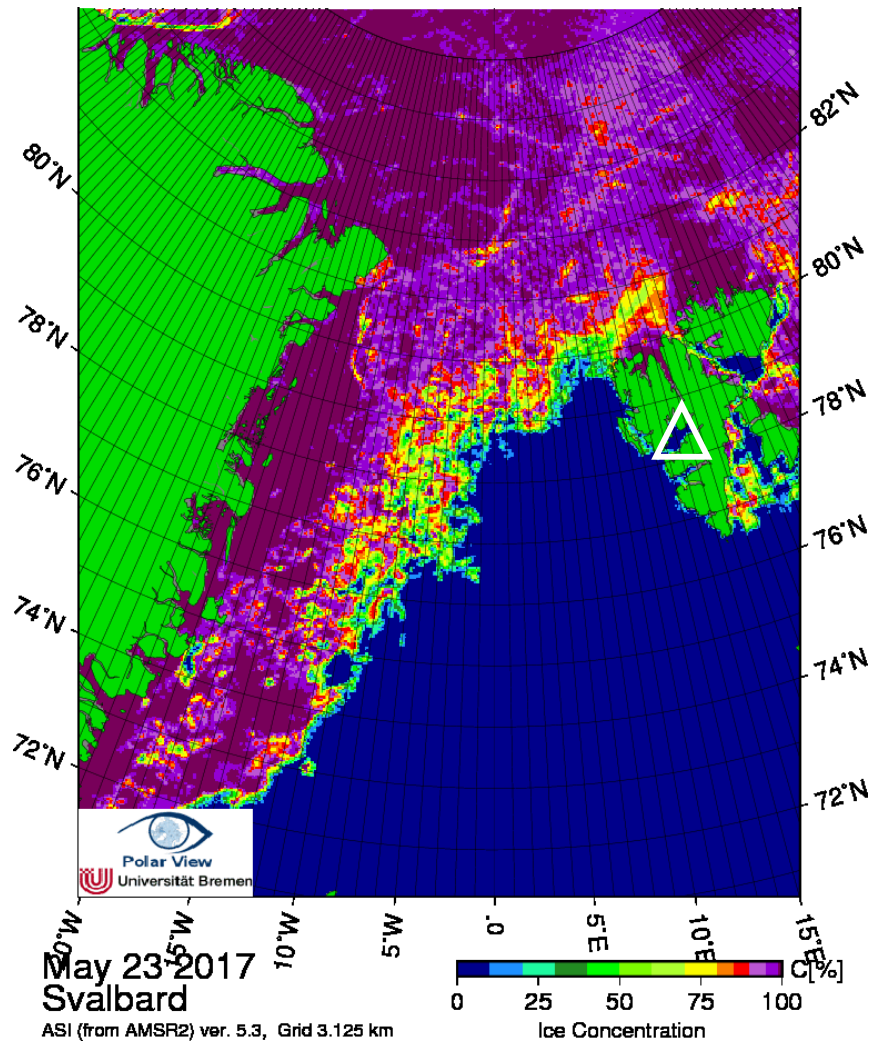
**MODIS 25 May 2017 @ 1200 UTC**



**NOAA 25 May 2017 @ 0300-1200 UTC**

**20170525\_0000**

## Arctic sea ice 23 & 24 May 2017





# Flight Day

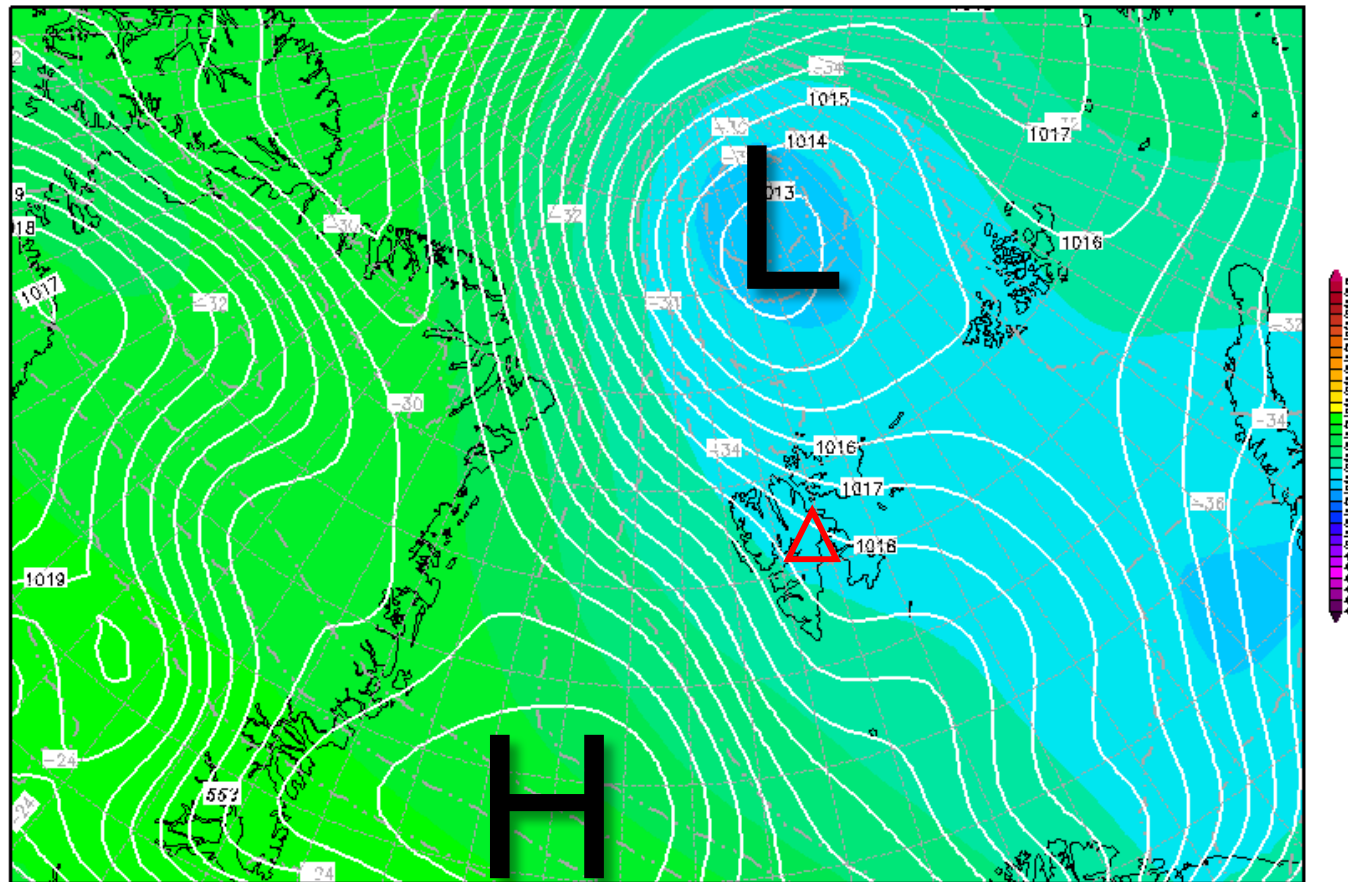
**Fri 26 May 2017**

# 500-hPa Geopotential 26 May 2017 @ 12 UTC

Init : Thu,25MAY2017 00Z

Valid: Fri,26MAY2017 12Z

*500 hPa Geopot.(gpdm), T (C) und Bodendr. (hPa)*

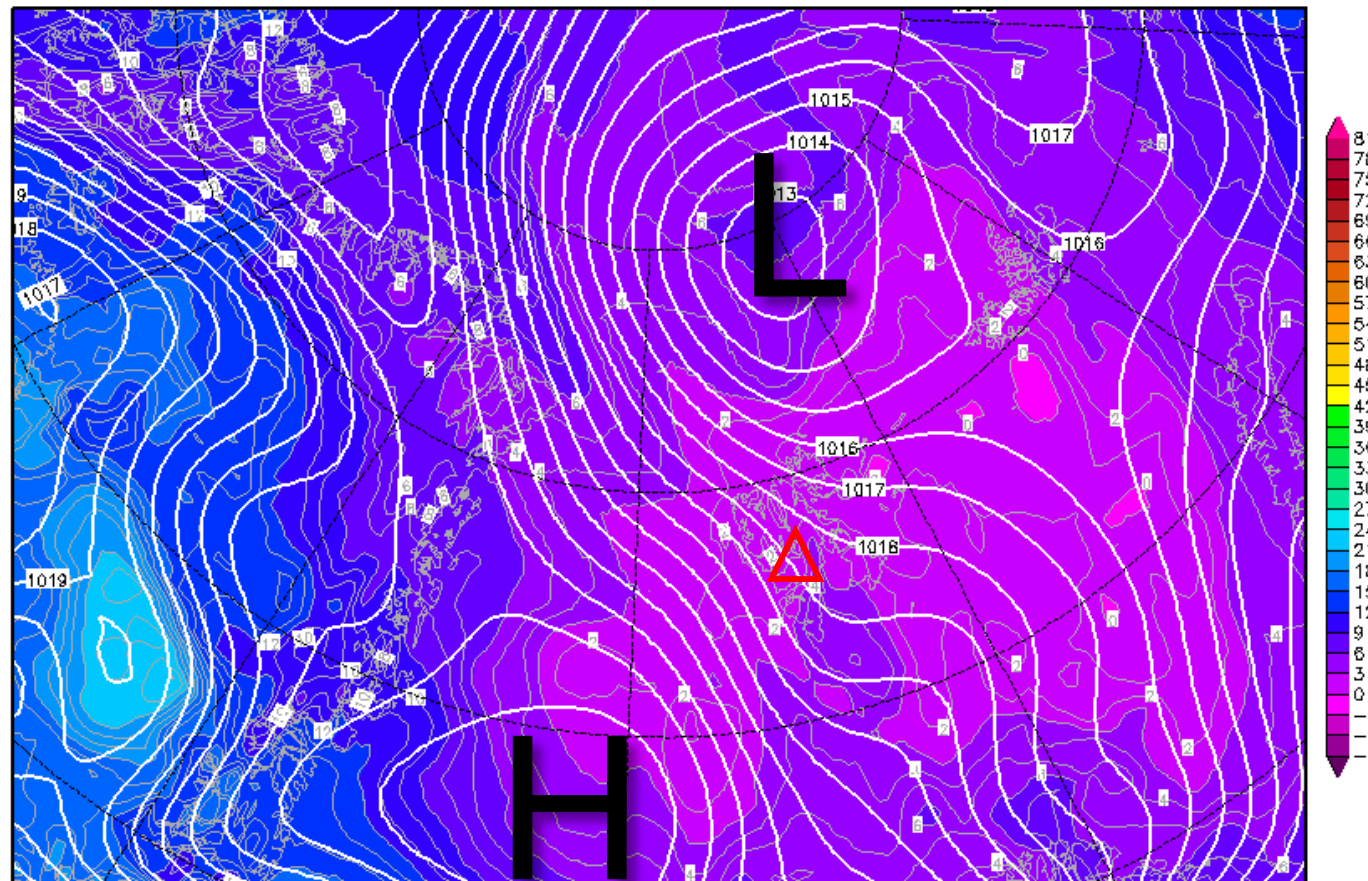


# 850-hPa Theta Equiv. 26 May 2017 @ 12 UTC

Init : Thu,25MAY2017 00Z

Valid: Fri,26MAY2017 12Z

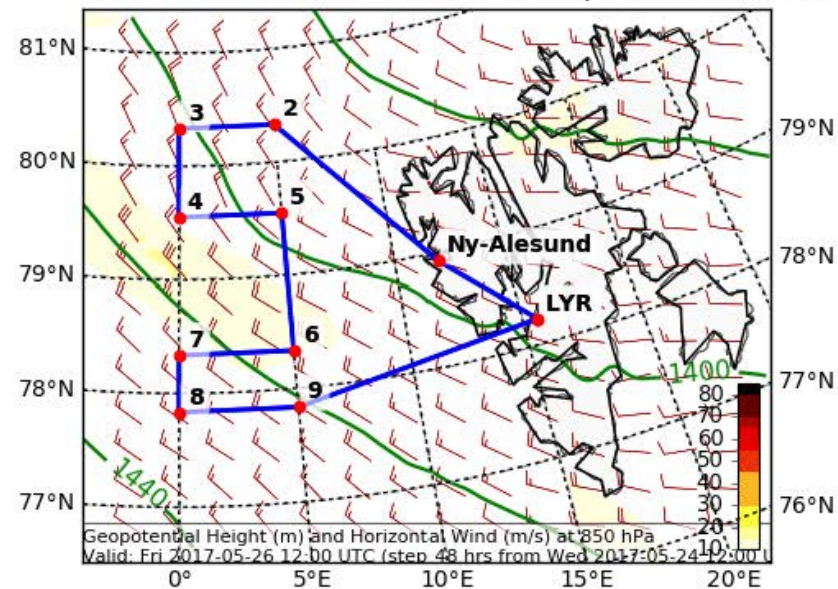
*Bodendruck (hPa) und 850 hPa Aeq.Pot.T. (Grad C)*



Daten: GFS—Modell des amerikanischen Wetterdienstes  
(C) Wetterzentrale  
[www.wetterzentrale.de](http://www.wetterzentrale.de)

# Forecast Tomorrow 12 UTC

Geopotential Height (m) and Horizontal Wind (m/s) (Wind Speed 10-85 m/s) at 850 (hPa)  
Valid: Fri 2017-05-26 12:00 UTC (step 48 hrs from Wed 2017-05-24 12:00 UTC)



EPSG:77790000

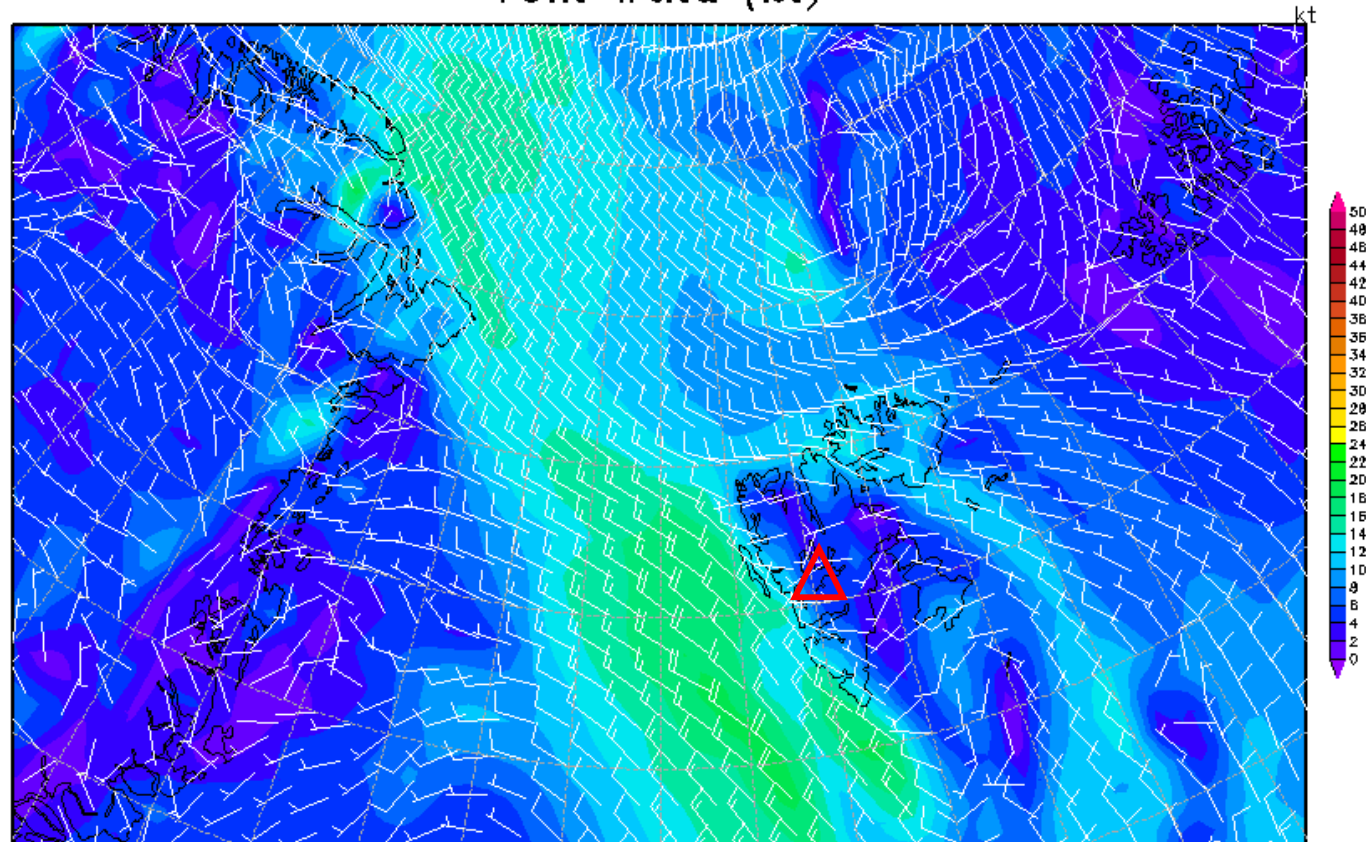


# 10-m Wind 26 May 2017 @ 12 UTC

Init : Thu,25MAY2017 00Z

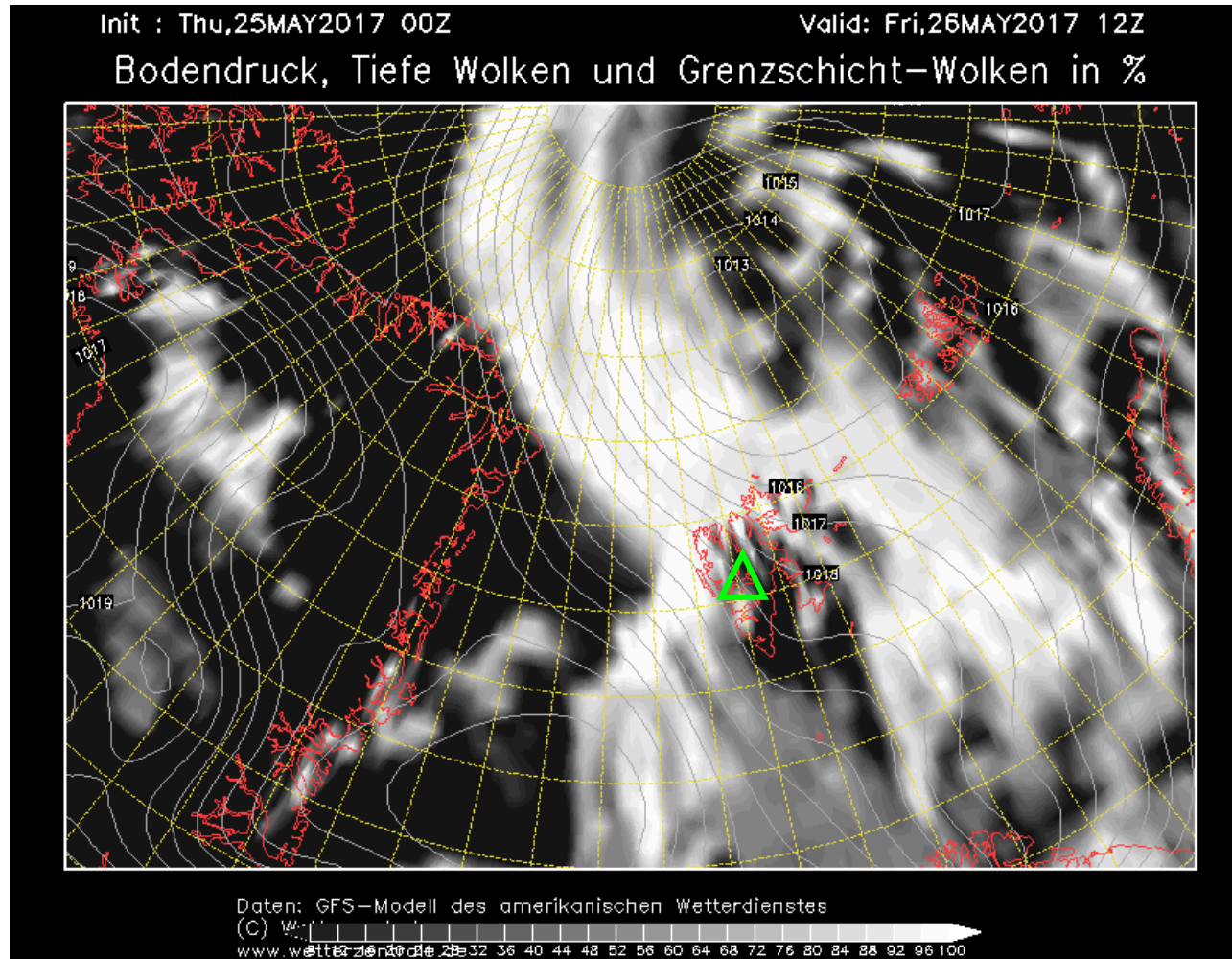
Valid: Fri,26MAY2017 12Z

*10m Wind (kt)*

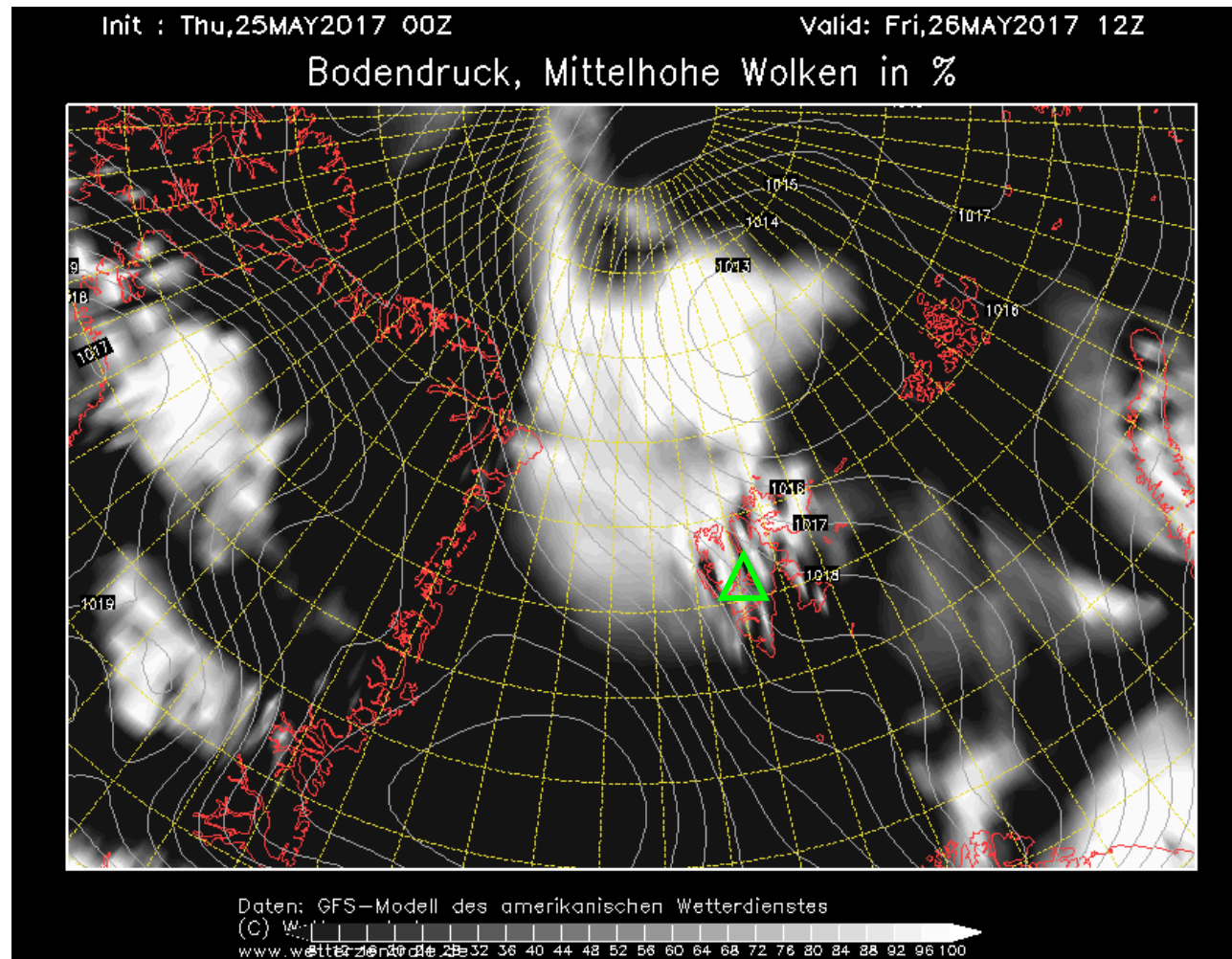


Daten: GFS—Modell des amerikanischen Wetterdienstes  
(C) Wetterzentrale  
[www.wetterzentrale.de](http://www.wetterzentrale.de)

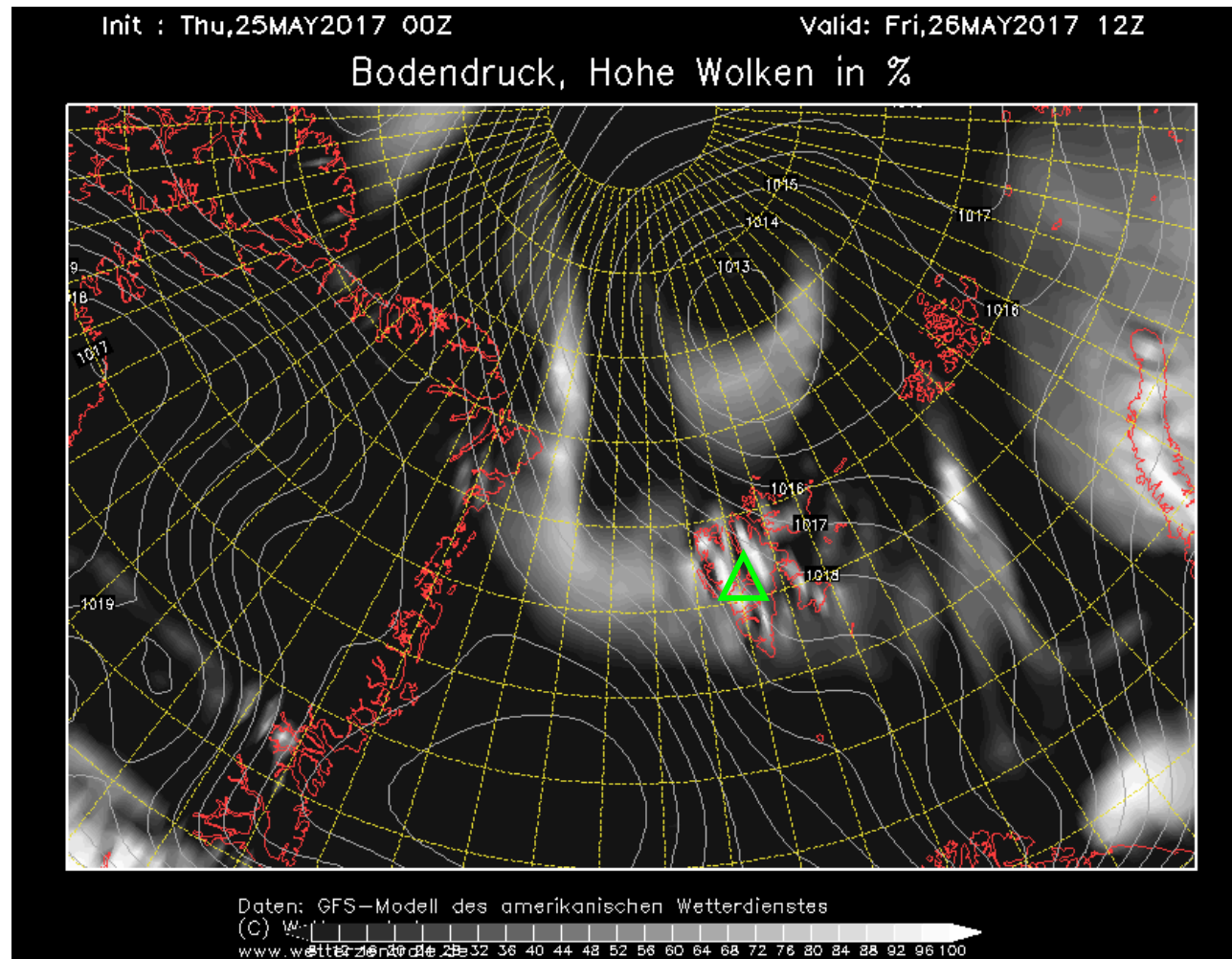
# Low-level cloud cover 26 May 2017 @ 12 UTC



## Mid-level cloud cover 26 May 2017 @ 12 UTC

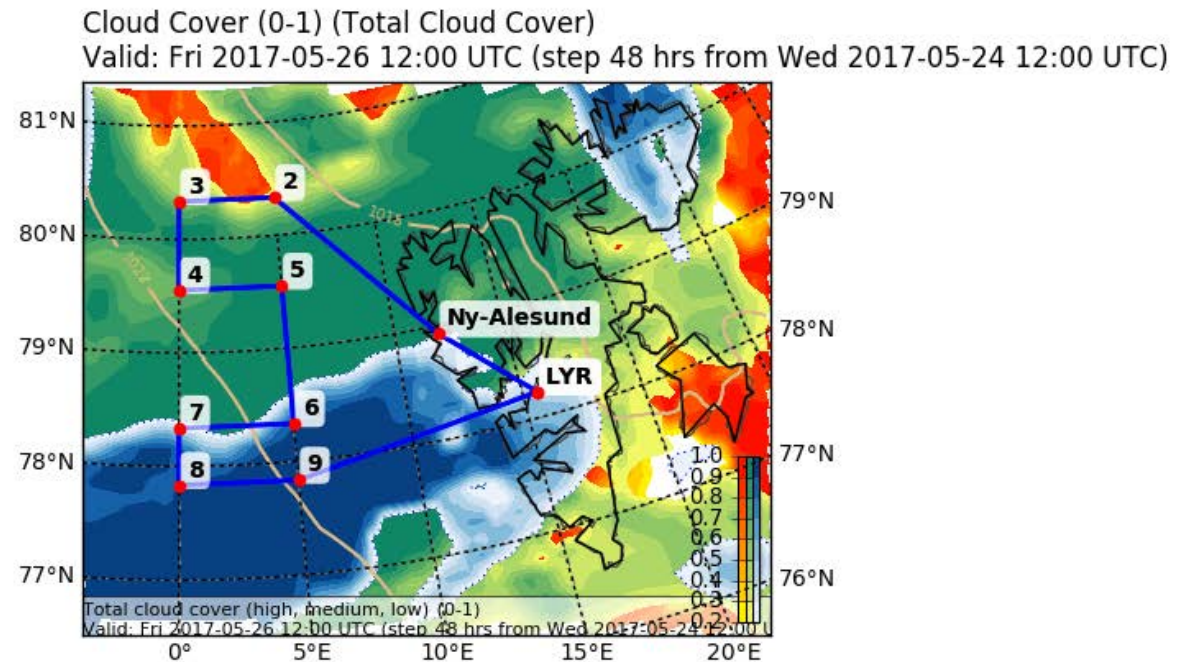


# High-level cloud cover 26 May 2017 @ 12 UTC





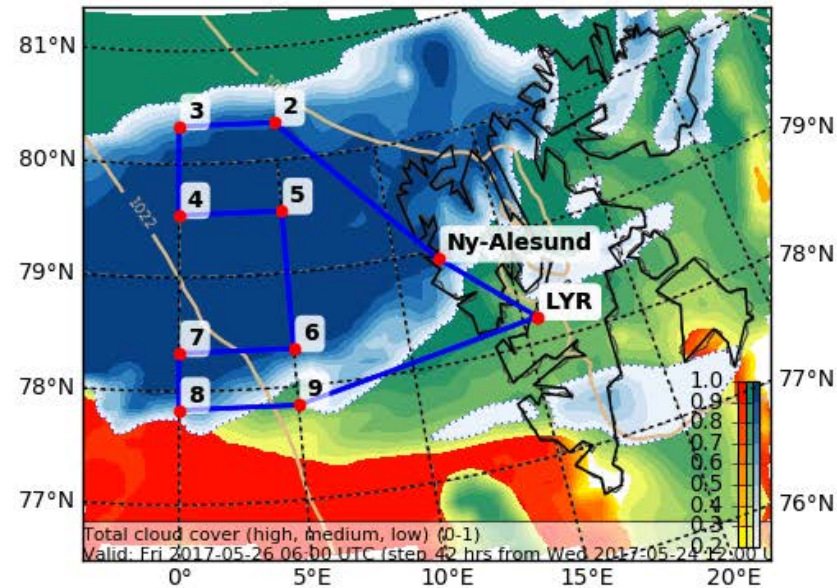
# Forecast Tomorrow 12 UTC



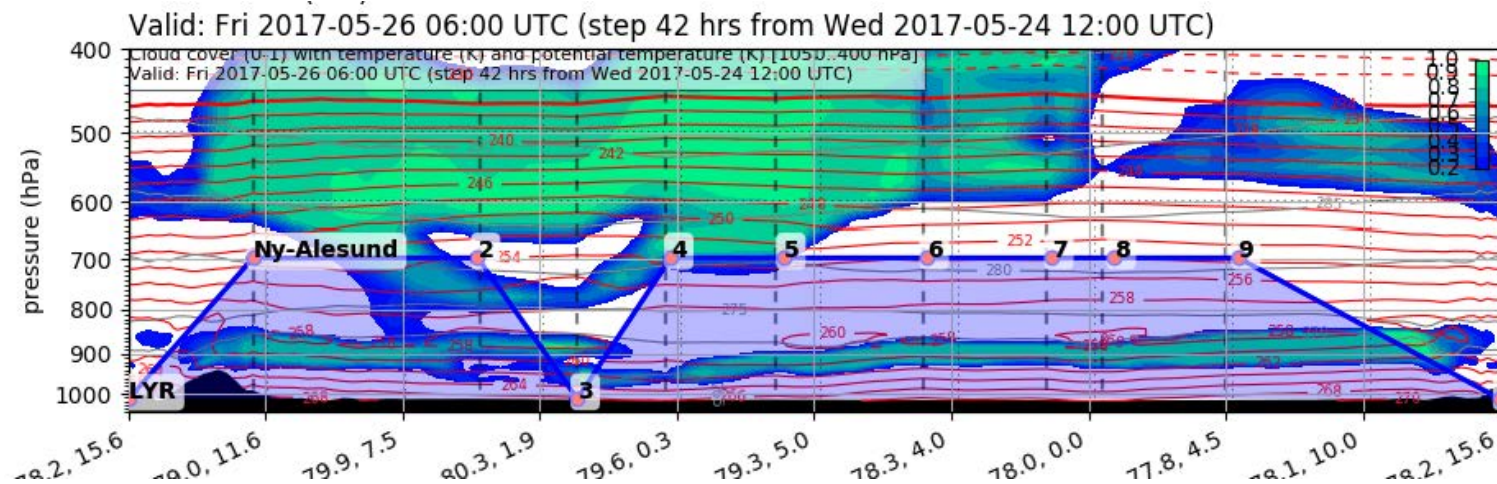
EPSG:77790000

# Forecast Tomorrow 06 UTC

Cloud Cover (0-1) (Total Cloud Cover)  
Valid: Fri 2017-05-26 06:00 UTC (step 42 hrs from Wed 2017-05-24 12:00 UTC)



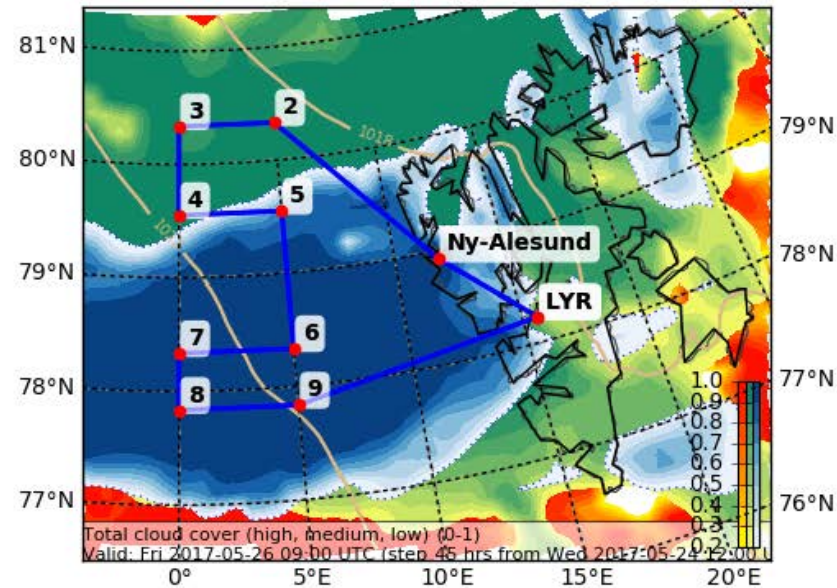
EPSG:77790000



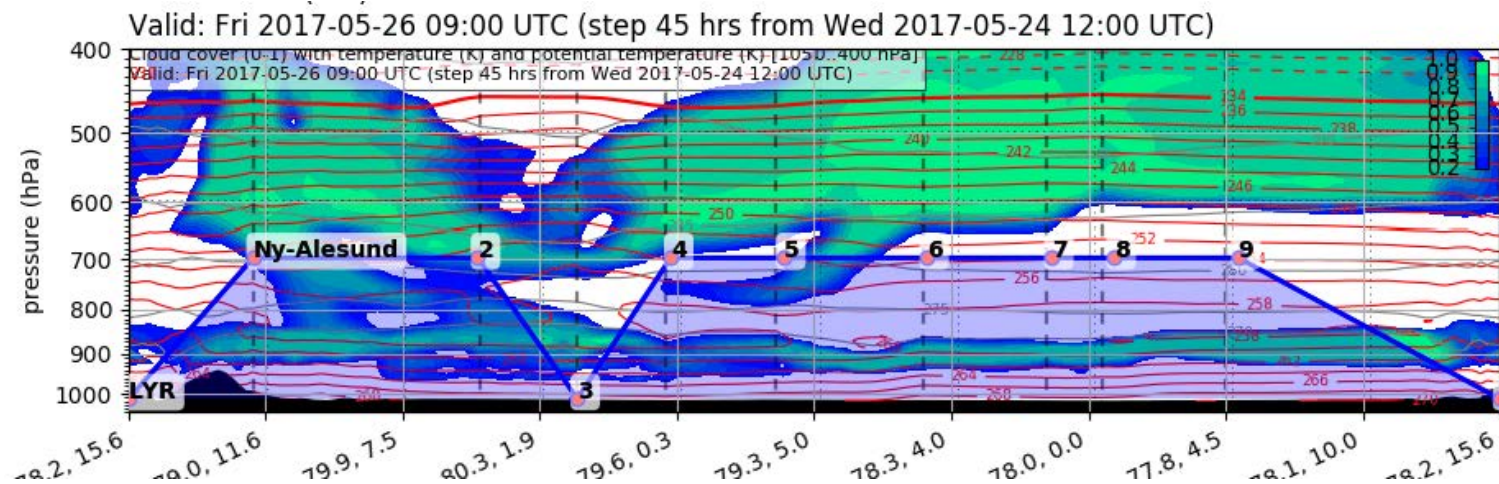


# Forecast Tomorrow 09 UTC

Cloud Cover (0-1) (Total Cloud Cover)  
Valid: Fri 2017-05-26 09:00 UTC (step 45 hrs from Wed 2017-05-24 12:00 UTC)

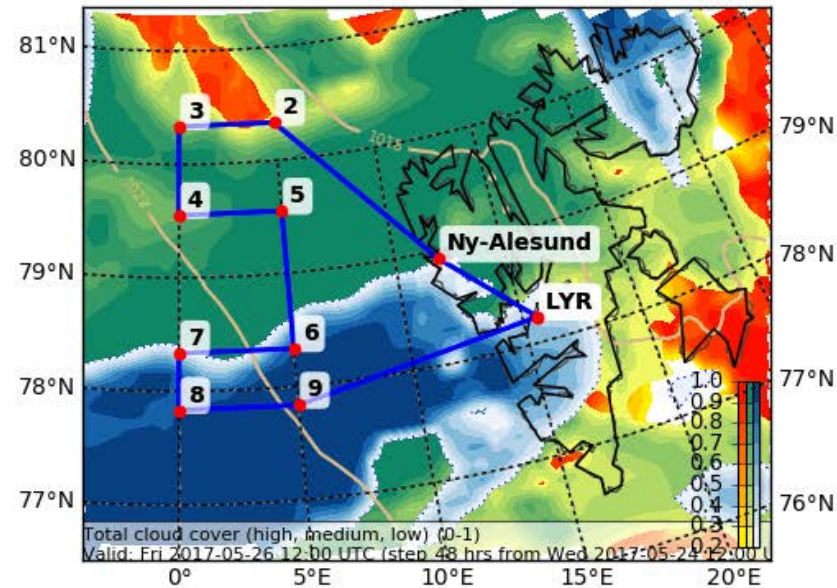


EPSG:77790000

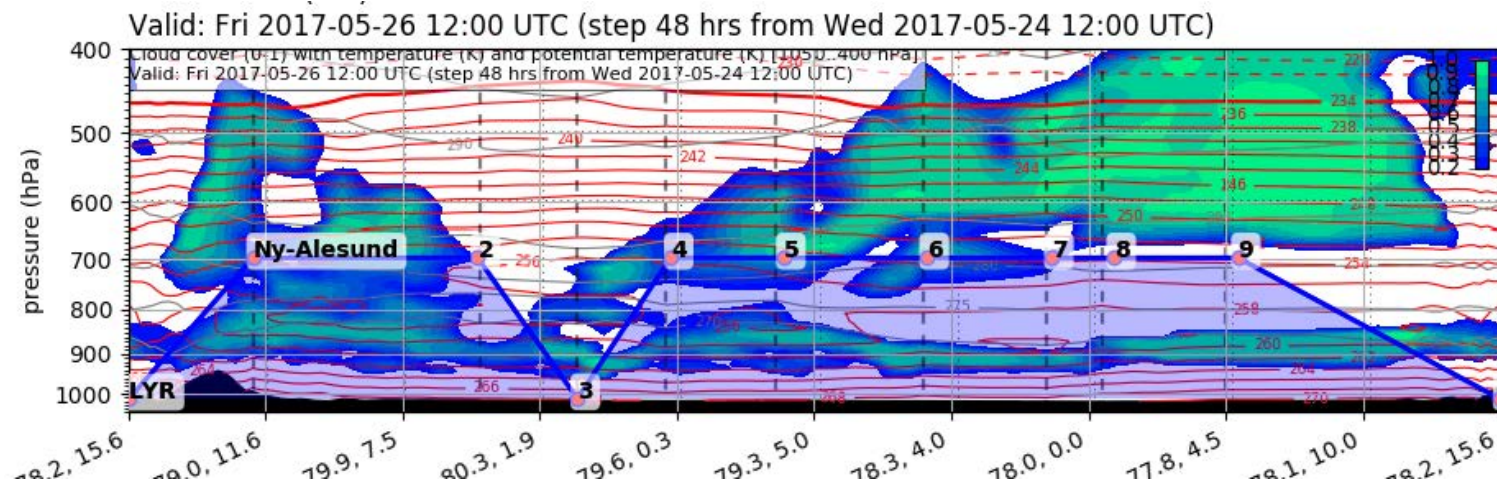


# Forecast Tomorrow 12 UTC

Cloud Cover (0-1) (Total Cloud Cover)  
Valid: Fri 2017-05-26 12:00 UTC (step 48 hrs from Wed 2017-05-24 12:00 UTC)



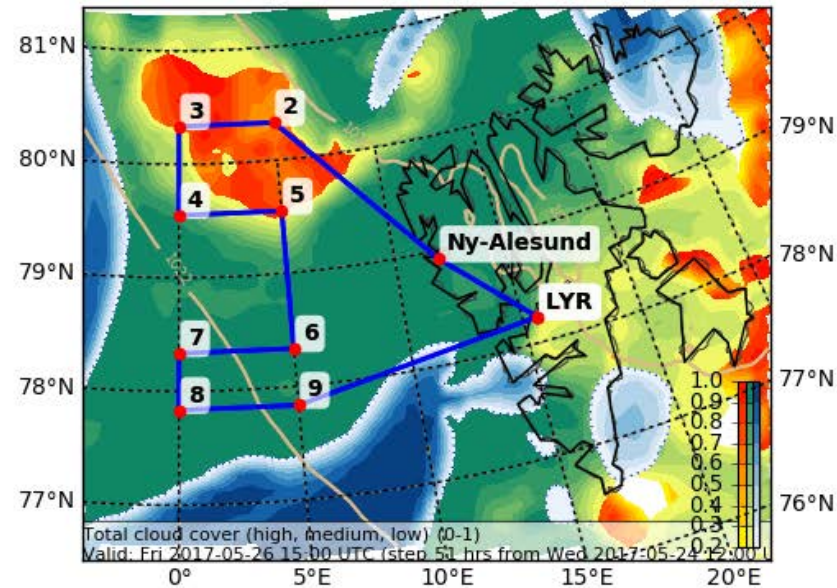
EPSG:77790000



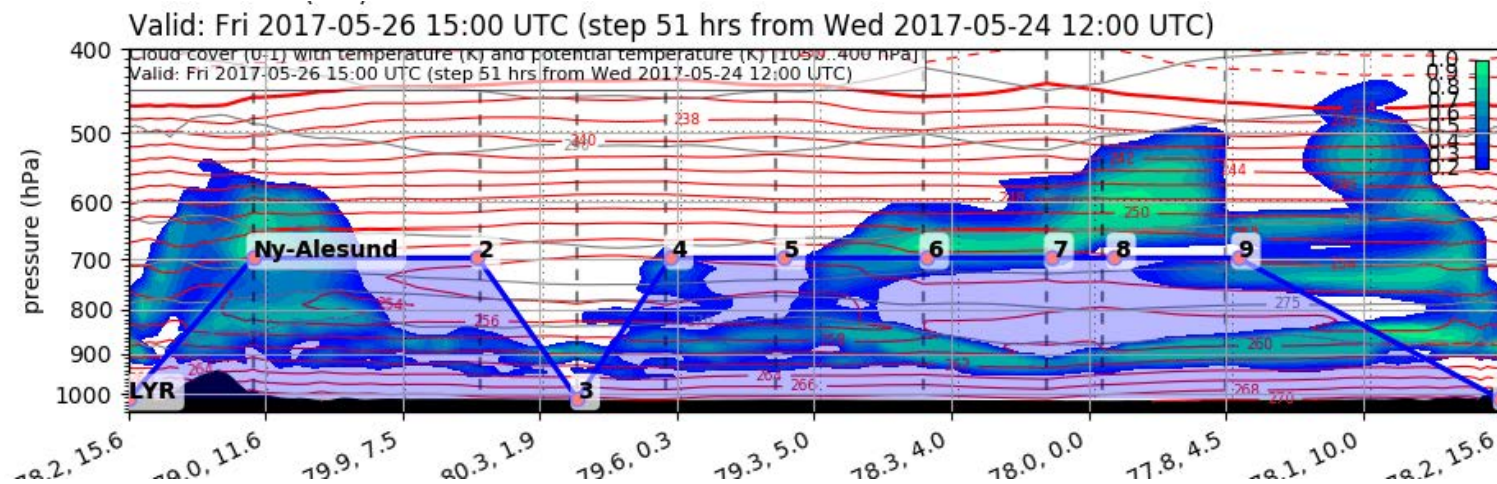


# Forecast Tomorrow 15 UTC

Cloud Cover (0-1) (Total Cloud Cover)  
Valid: Fri 2017-05-26 15:00 UTC (step 51 hrs from Wed 2017-05-24 12:00 UTC)

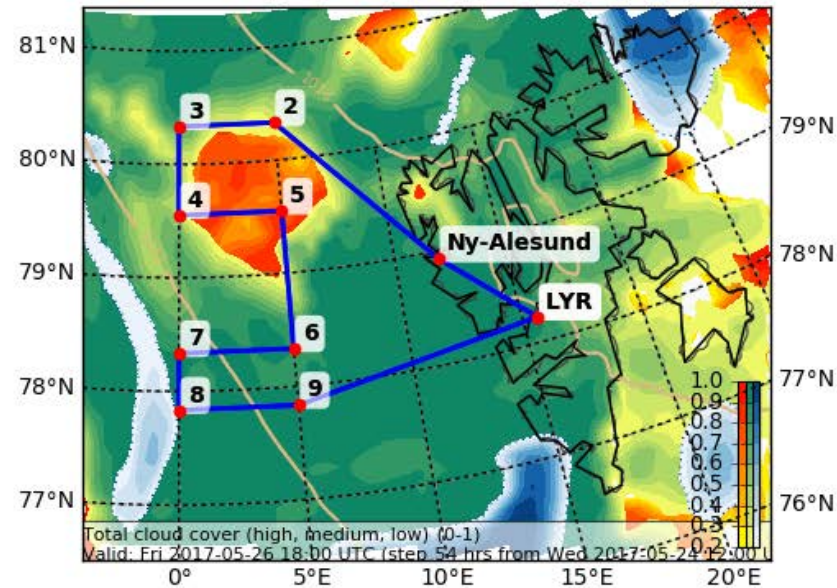


EPSG:77790000

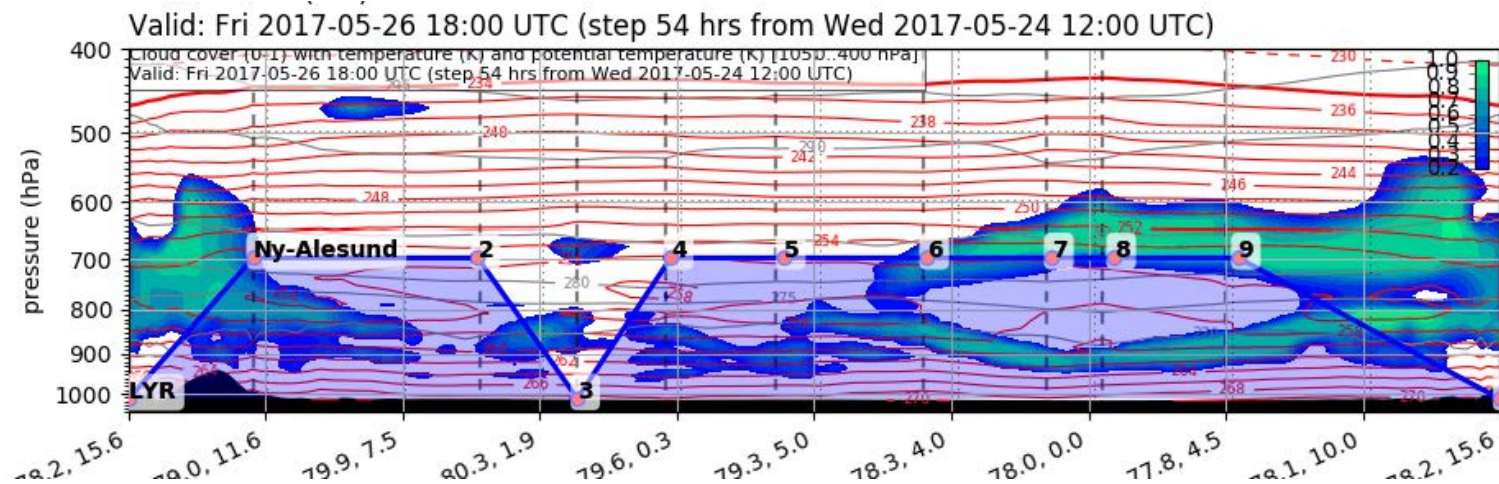


# Forecast Tomorrow 18 UTC

Cloud Cover (0-1) (Total Cloud Cover)  
Valid: Fri 2017-05-26 18:00 UTC (step 54 hrs from Wed 2017-05-24 12:00 UTC)



EPSG:77790000



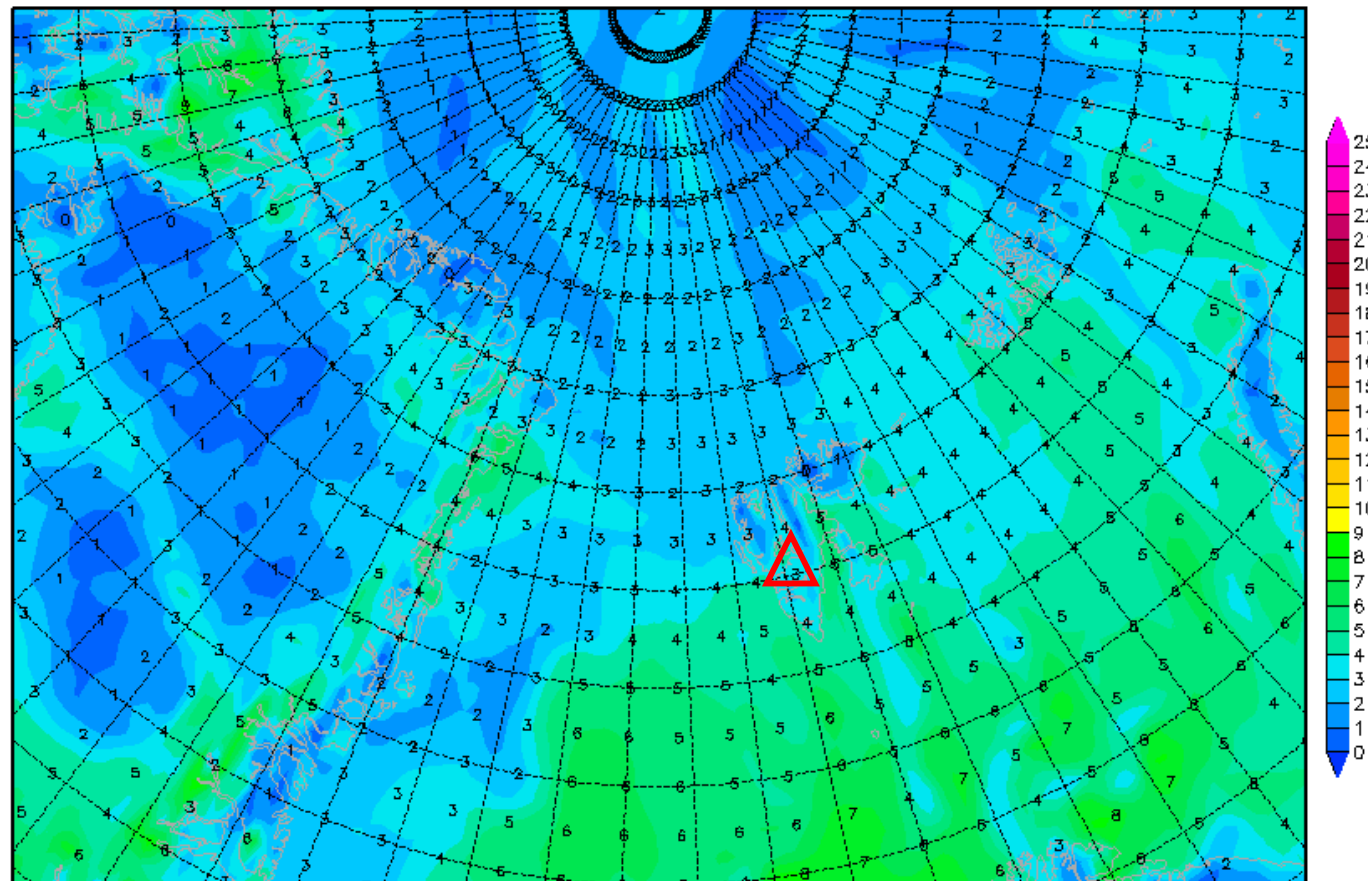


# 2-m dew point diff. 26 May 2017 @ 12 UTC

Init : Thu,25MAY2017 00Z

Valid: Fri,26MAY2017 12Z

*2m (Temperatur-Taupunkt)*



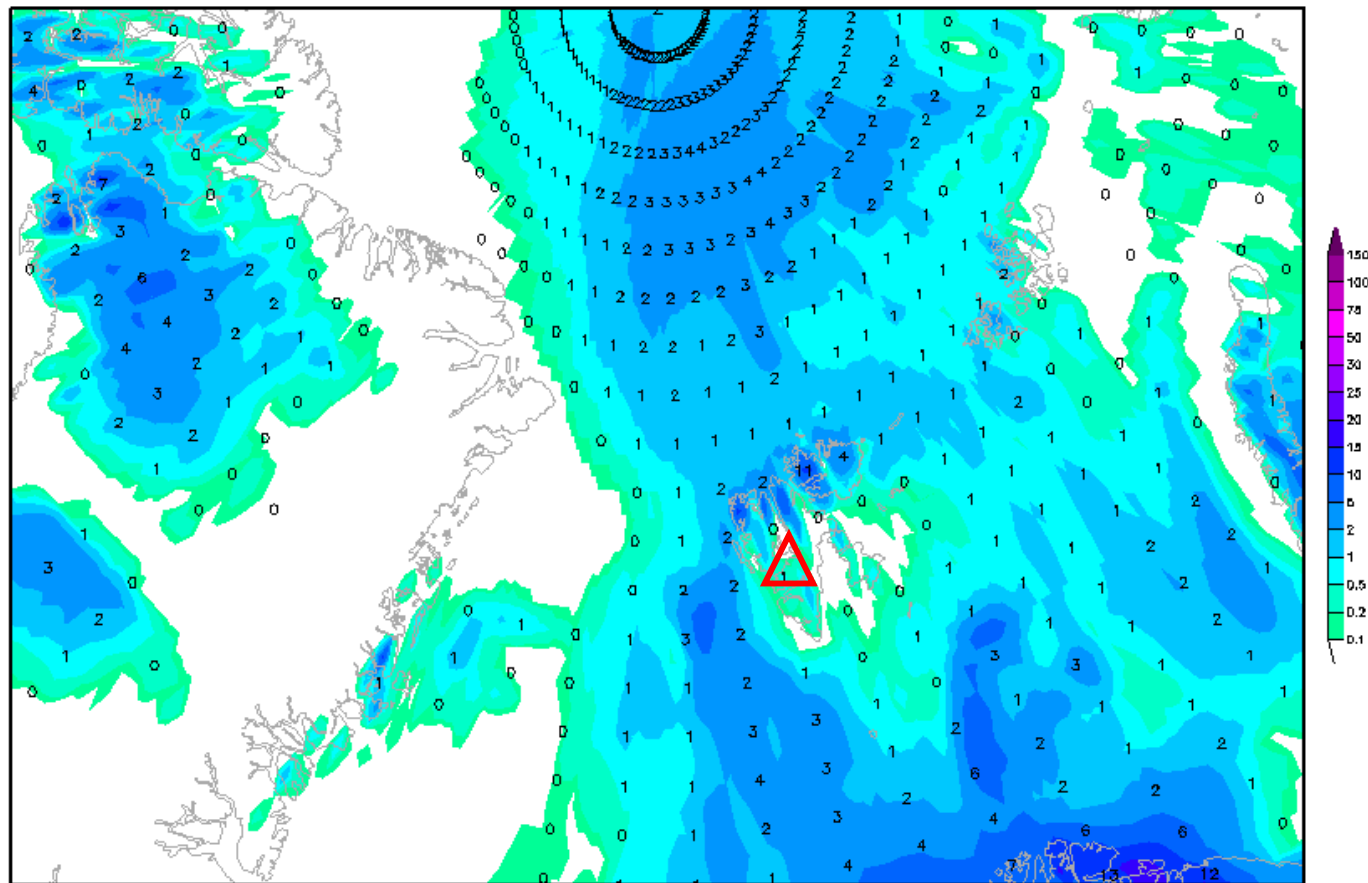
Daten: GFS  
(C) Wetterzentrale  
[www.wetterzentrale.de](http://www.wetterzentrale.de)

# Precipitation 26 May 2017 @ 12 UTC

Init : Thu,25MAY2017 00Z

Valid: Fri,26MAY2017 12Z

*Gesamtniederschlag bis zum Termin (mm)*



Daten: GFS-Modell des US-Wetterdienstes  
(C) Wetterzentrale  
[www.wetterzentrale.de](http://www.wetterzentrale.de)



# Outlook

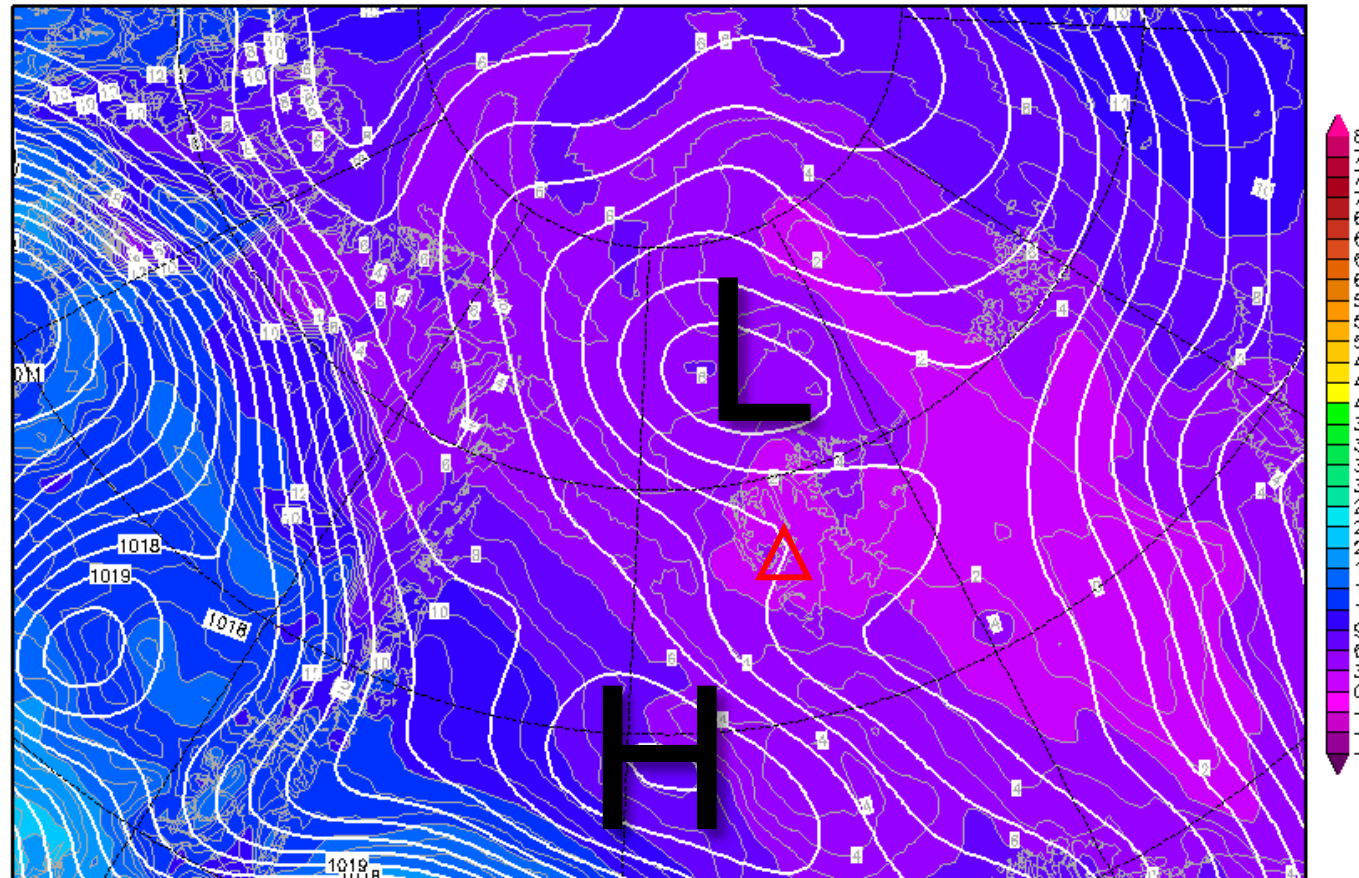
**Sat 27 May – Sun 28 May 2017**

# Sat 27 May 2017

Init : Thu,25MAY2017 00Z

Valid: Sat,27MAY2017 12Z

*Bodendruck (hPa) und 850 hPa Aeq.Pot.T. (Grad C)*

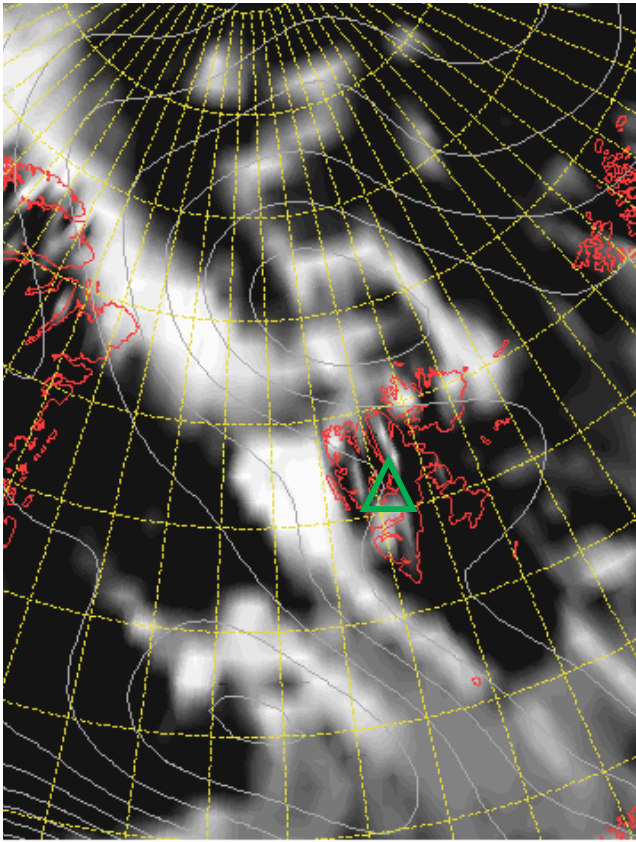


**Surf. Pressure &  
850-hPa Theta Equiv.  
27 May 2017 @ 12 UTC**

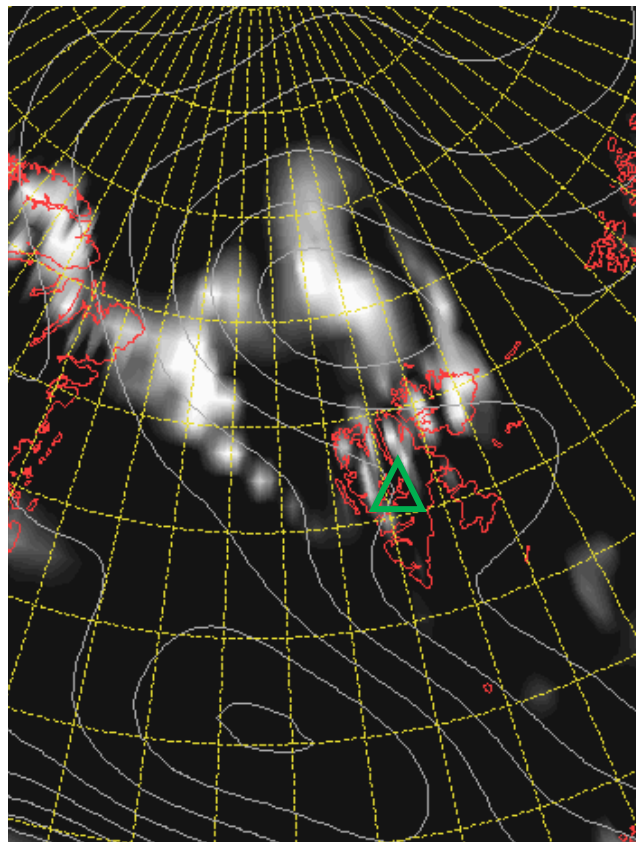
Daten: GFS-Modell des amerikanischen Wetterdienstes  
(C) Wetterzentrale  
[www.wetterzentrale.de](http://www.wetterzentrale.de)

## Cloud Cover 27 May 2017 @ 12 UTC

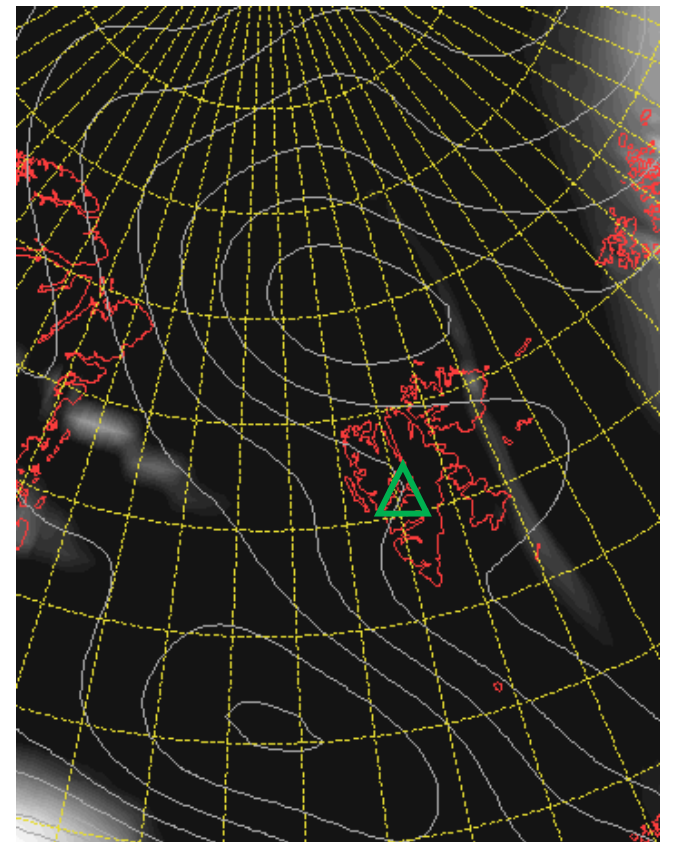
L



M



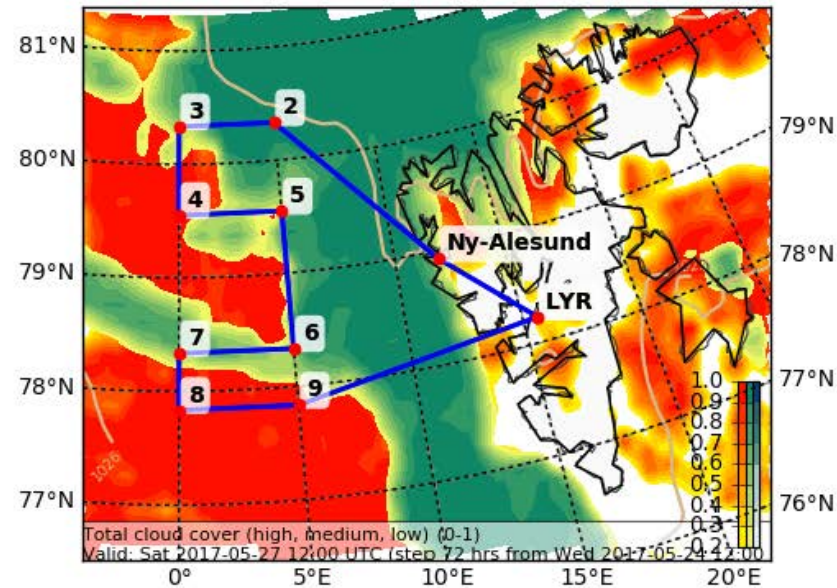
H



# Forecast After Tomorrow 12 UTC

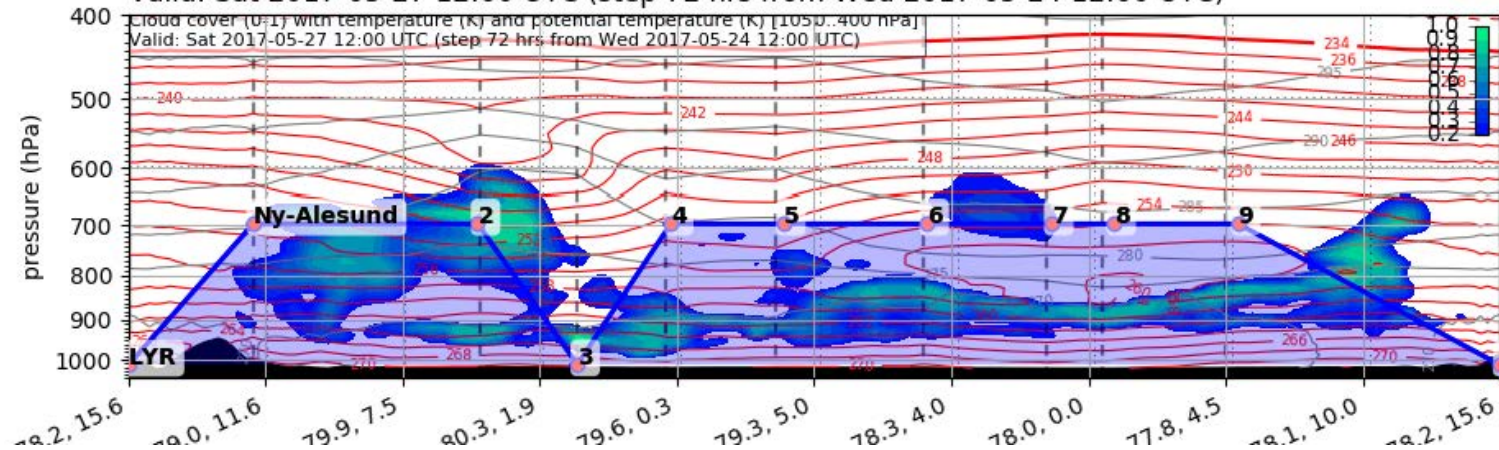
Cloud Cover (0-1) (Total Cloud Cover)

Valid: Sat 2017-05-27 12:00 UTC (step 72 hrs from Wed 2017-05-24 12:00 UTC)



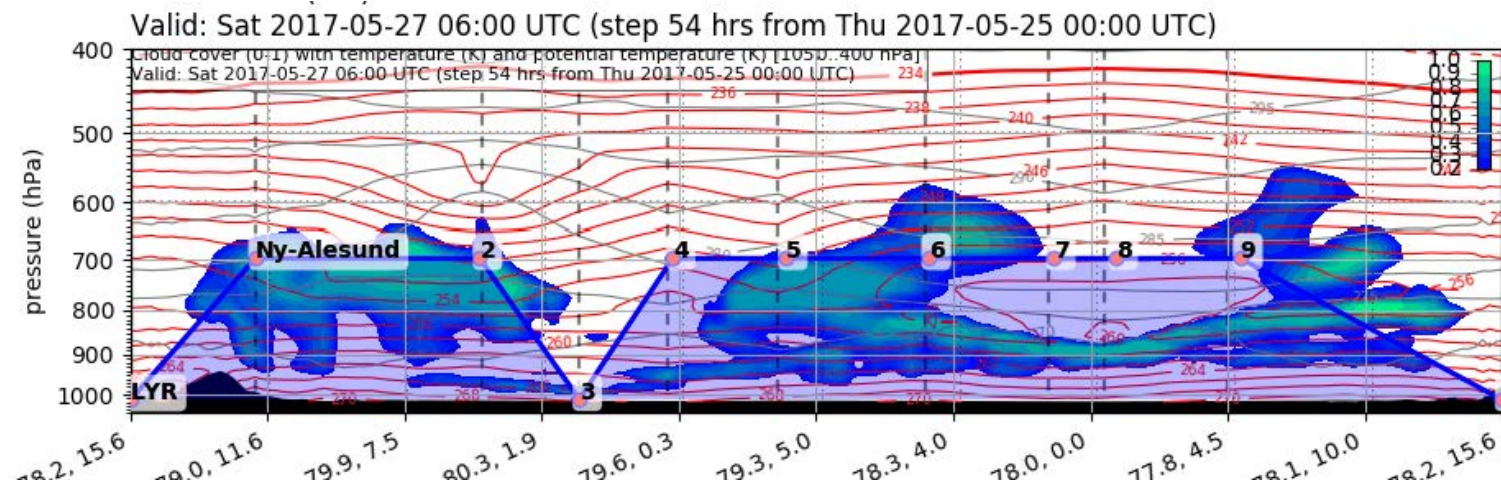
EPSG:77790000

Valid: Sat 2017-05-27 12:00 UTC (step 72 hrs from Wed 2017-05-24 12:00 UTC)

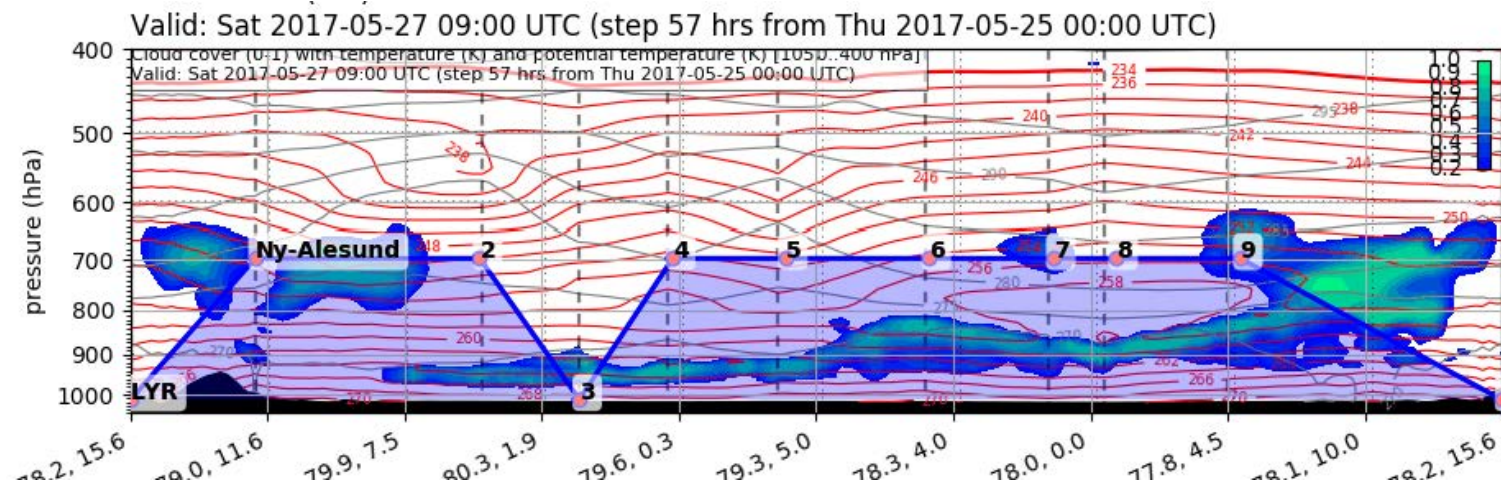




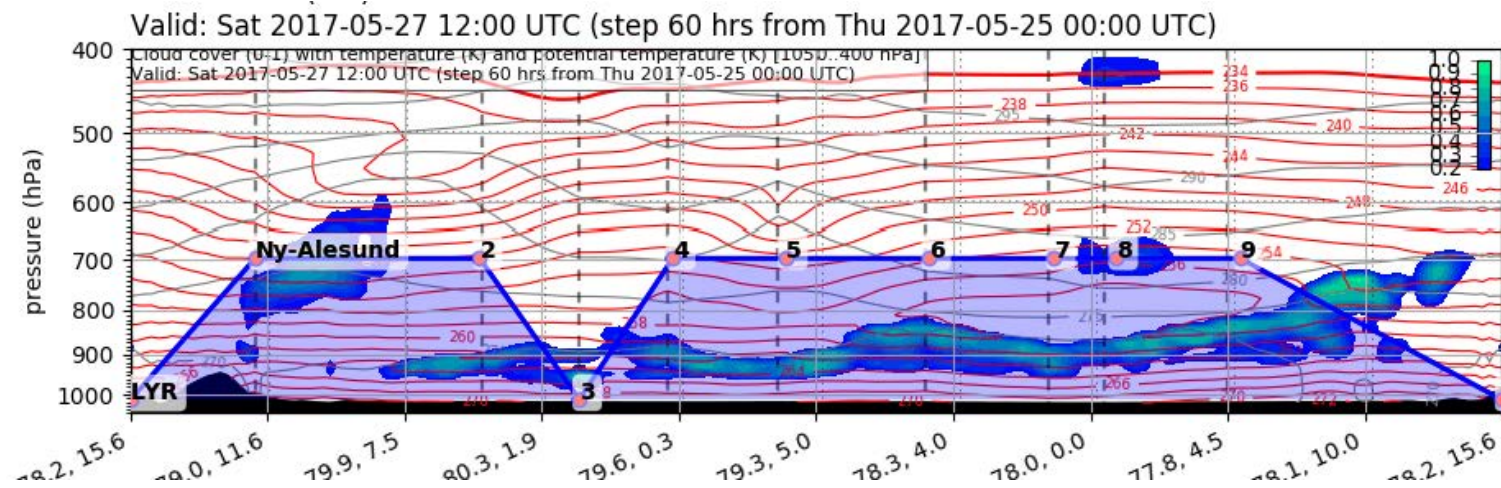
# Forecast After Tomorrow 06 UTC



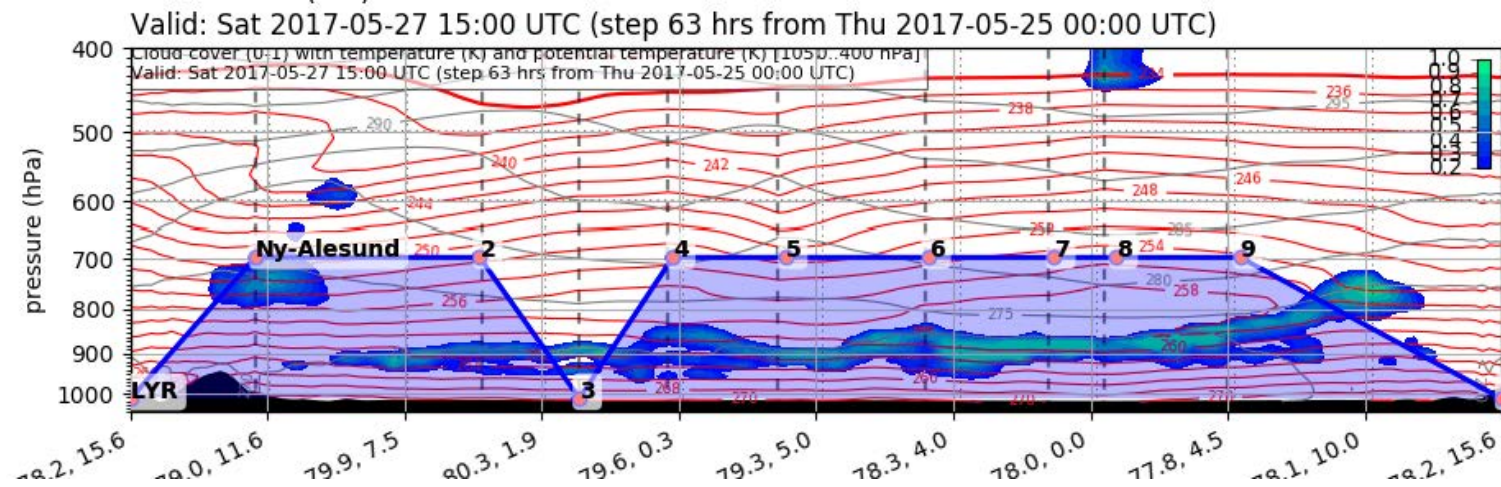
# Forecast After Tomorrow 09 UTC



# Forecast After Tomorrow 12 UTC

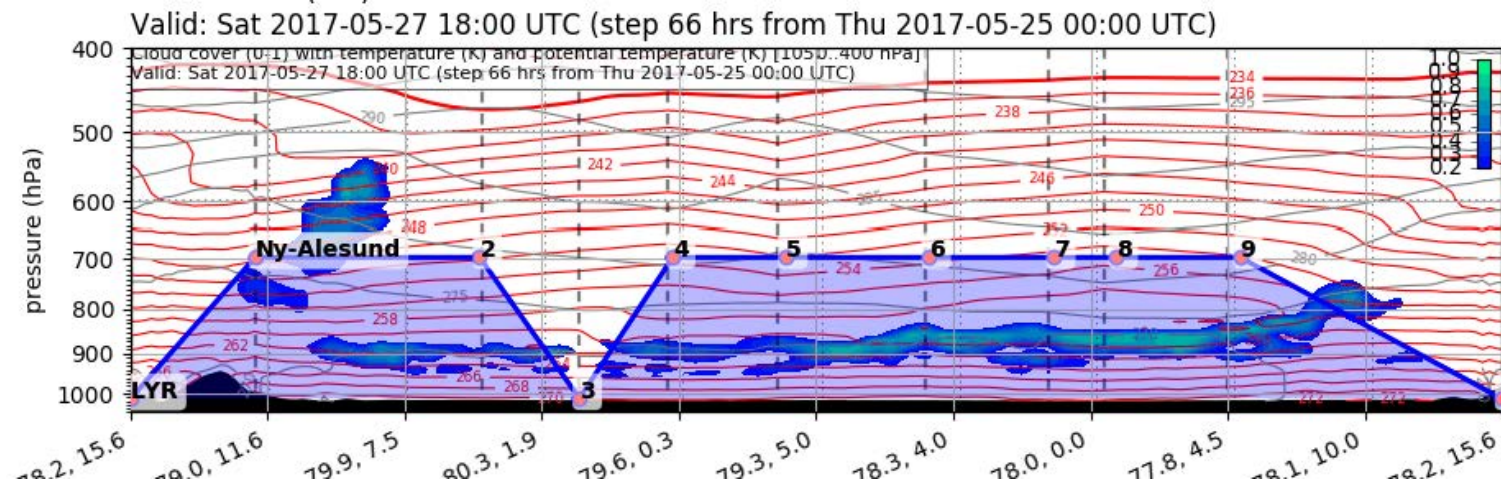


# Forecast After Tomorrow 15 UTC





# Forecast After Tomorrow 18 UTC

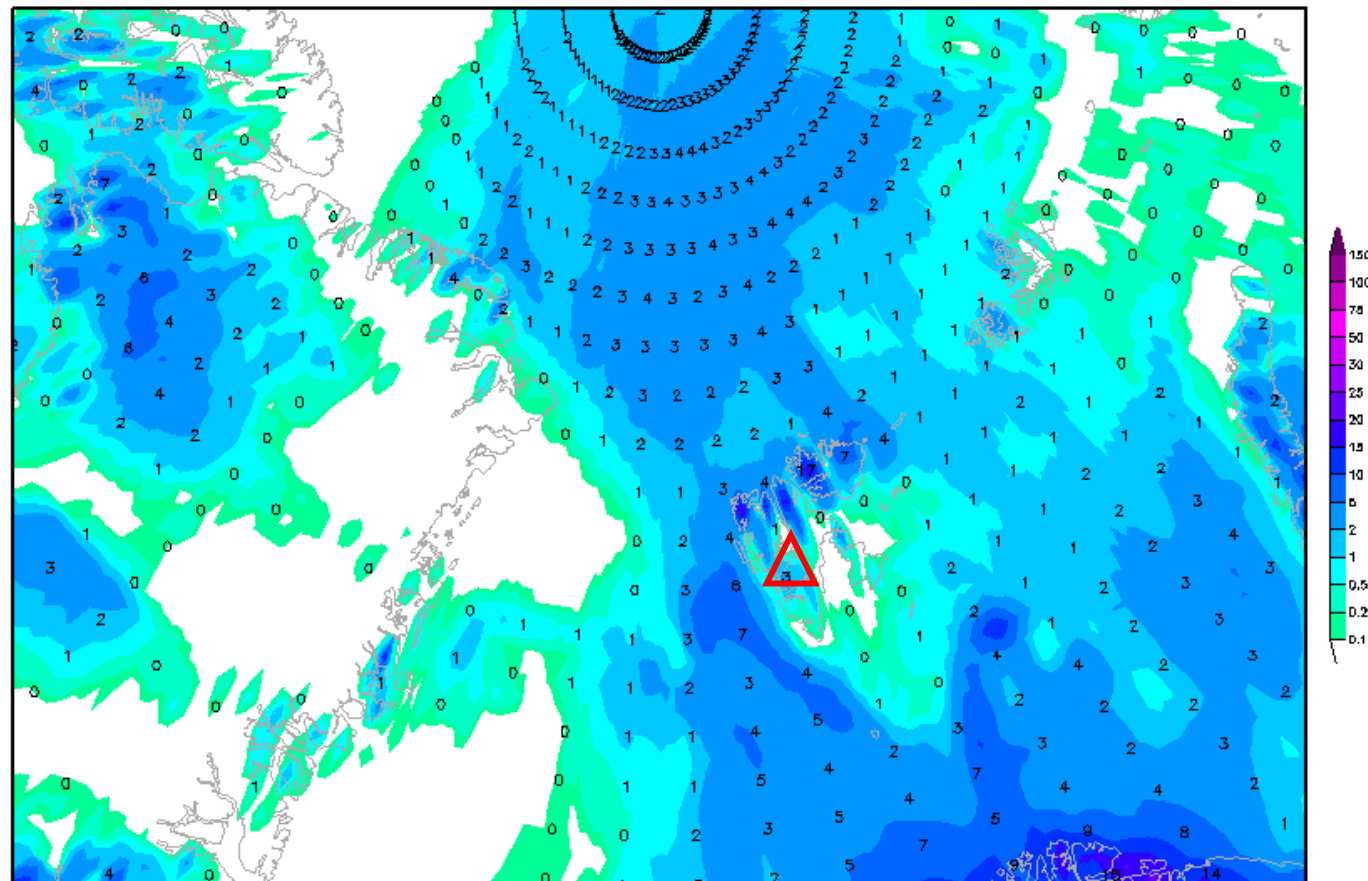


# Precipitation 27 May 2017 @ 12 UTC

Init : Thu,25MAY2017 00Z

Valid: Sat,27MAY2017 12Z

*Gesamtniederschlag bis zum Termin (mm)*



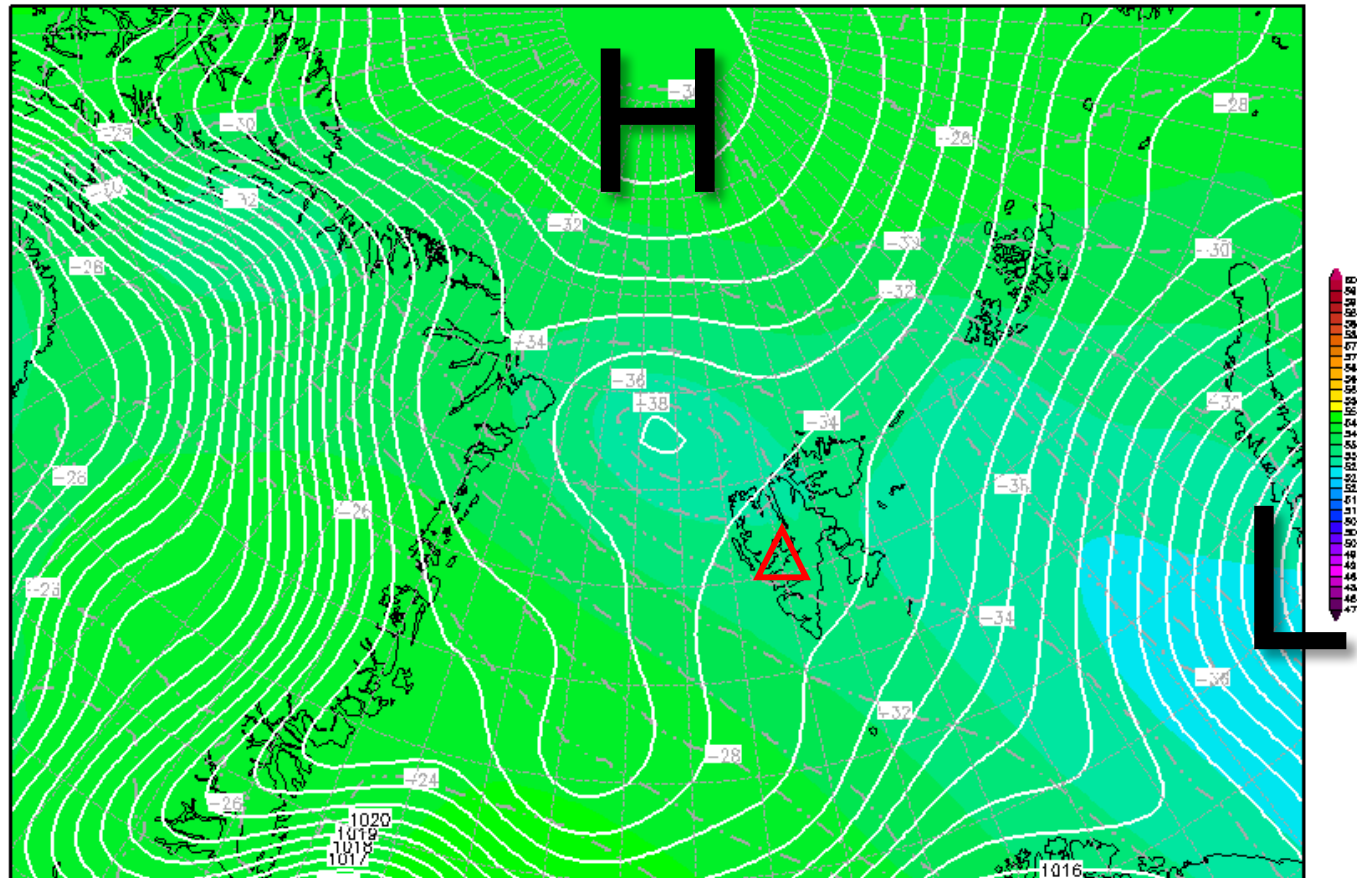
Daten: GFS-Modell des US-Wetterdienstes  
(C) Wetterzentrale  
[www.wetterzentrale.de](http://www.wetterzentrale.de)

Sun 28 May 2017

Init : Thu,25MAY2017 00Z

Valid: Sun,28MAY2017 12Z

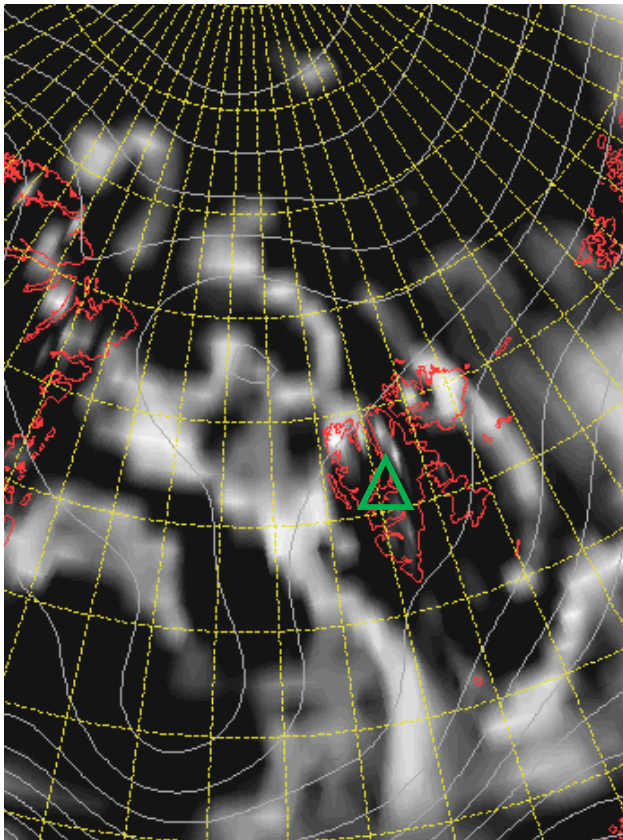
500 hPa Geopot.(gpm), T (C) und Bodendr. (hPa)



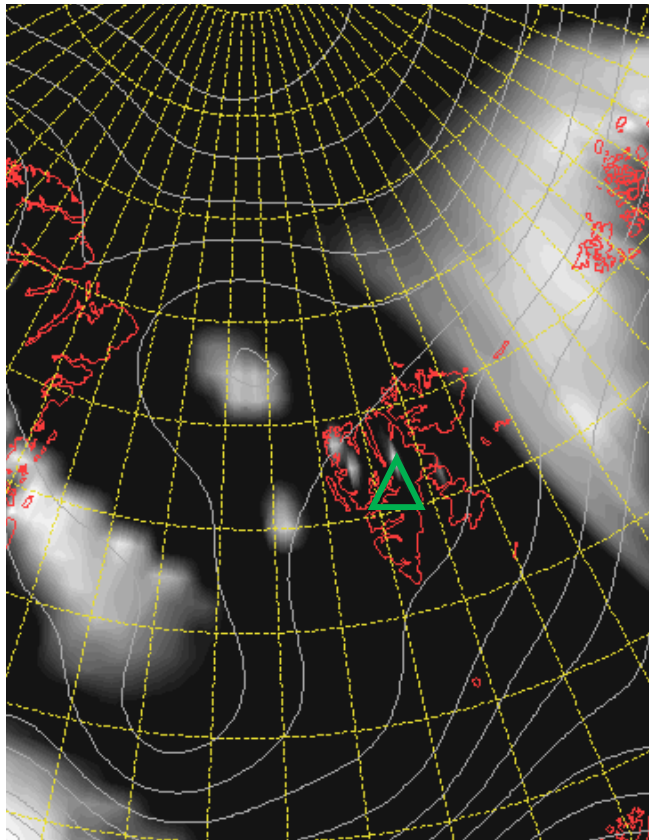
Surf. Pressure &  
500-hPa Geopot.  
28 May 2017 @ 12 UTC

## Cloud Cover 28 May 2017 @ 12 UTC

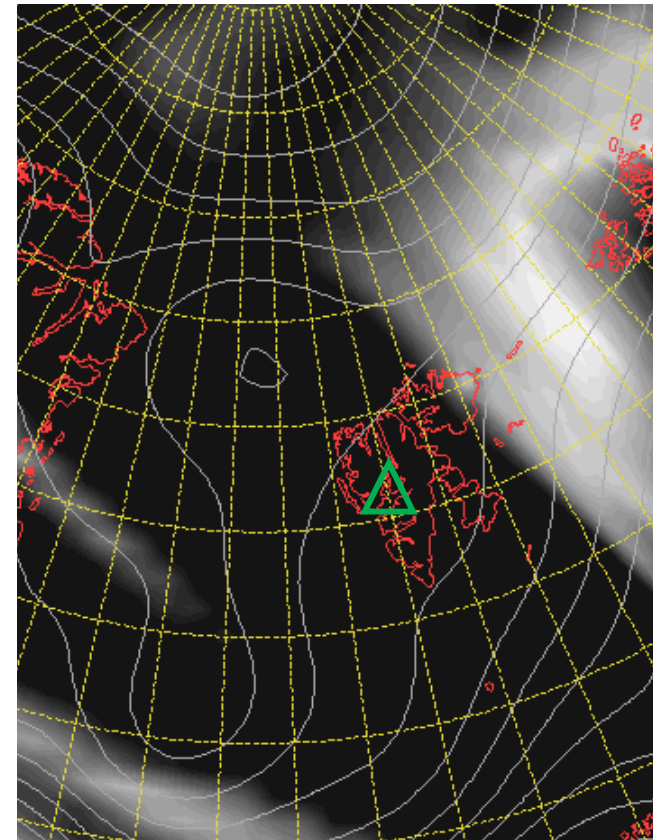
L



M



H

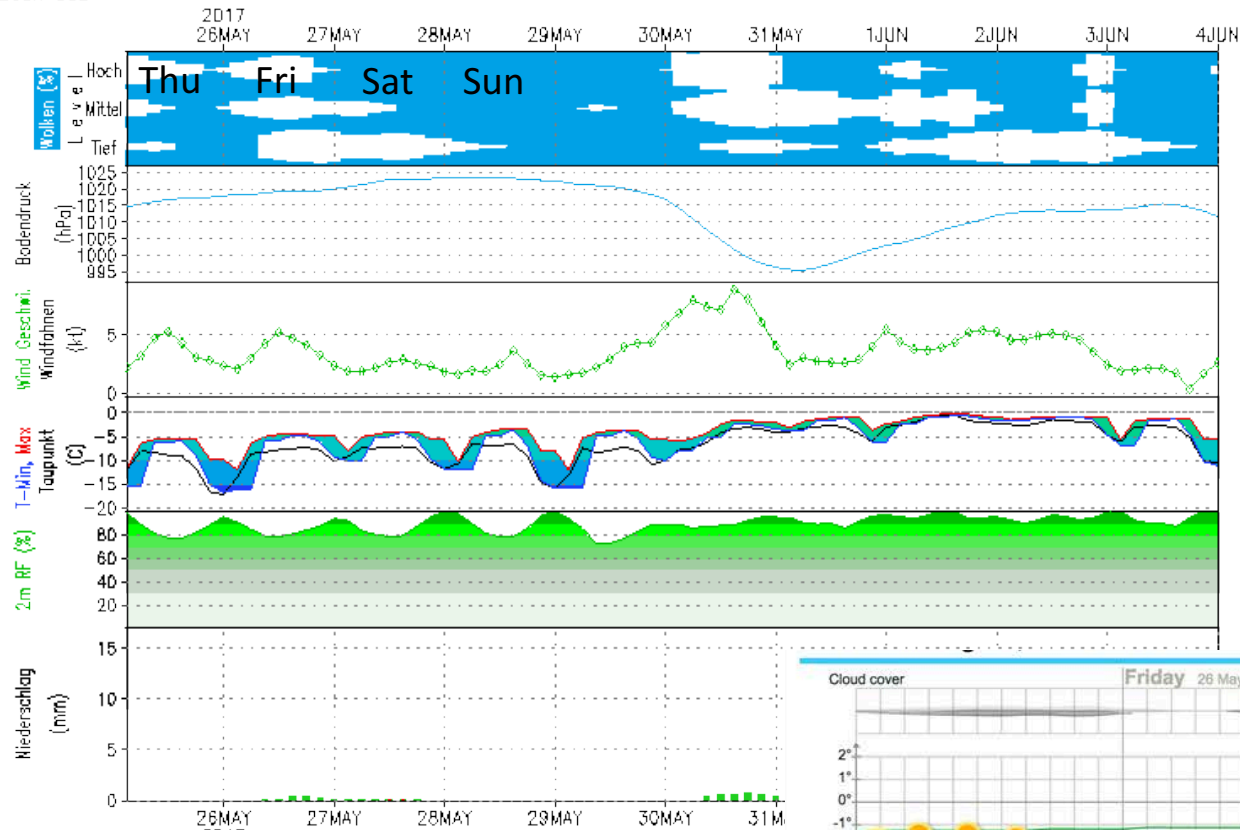




# GFS – Meteogramm

Lon: 15.63 Lat: 78.22 Hgt: 331m

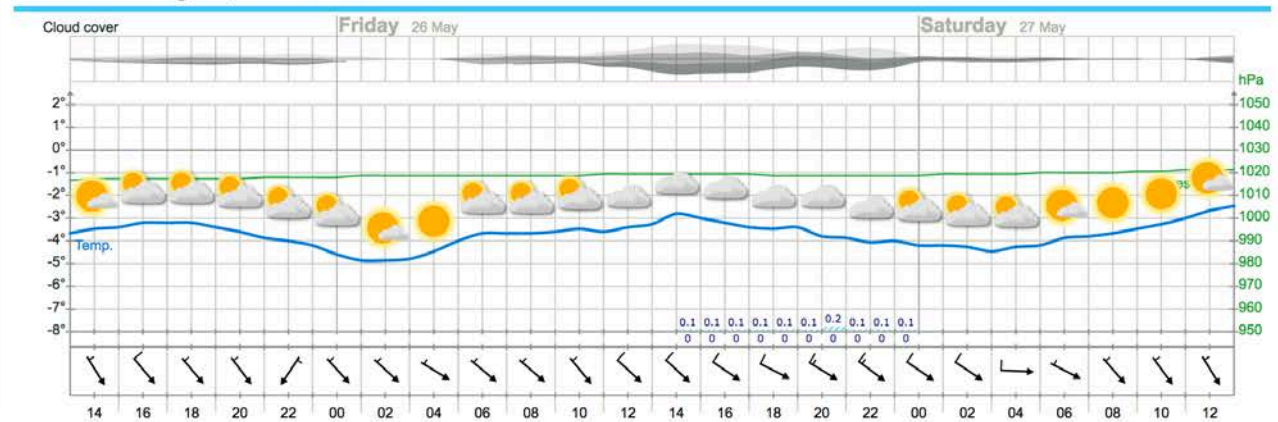
Lauf: 00Z



Heute kein Sonnenaufgang  
Heute kein Sonnenuntergang

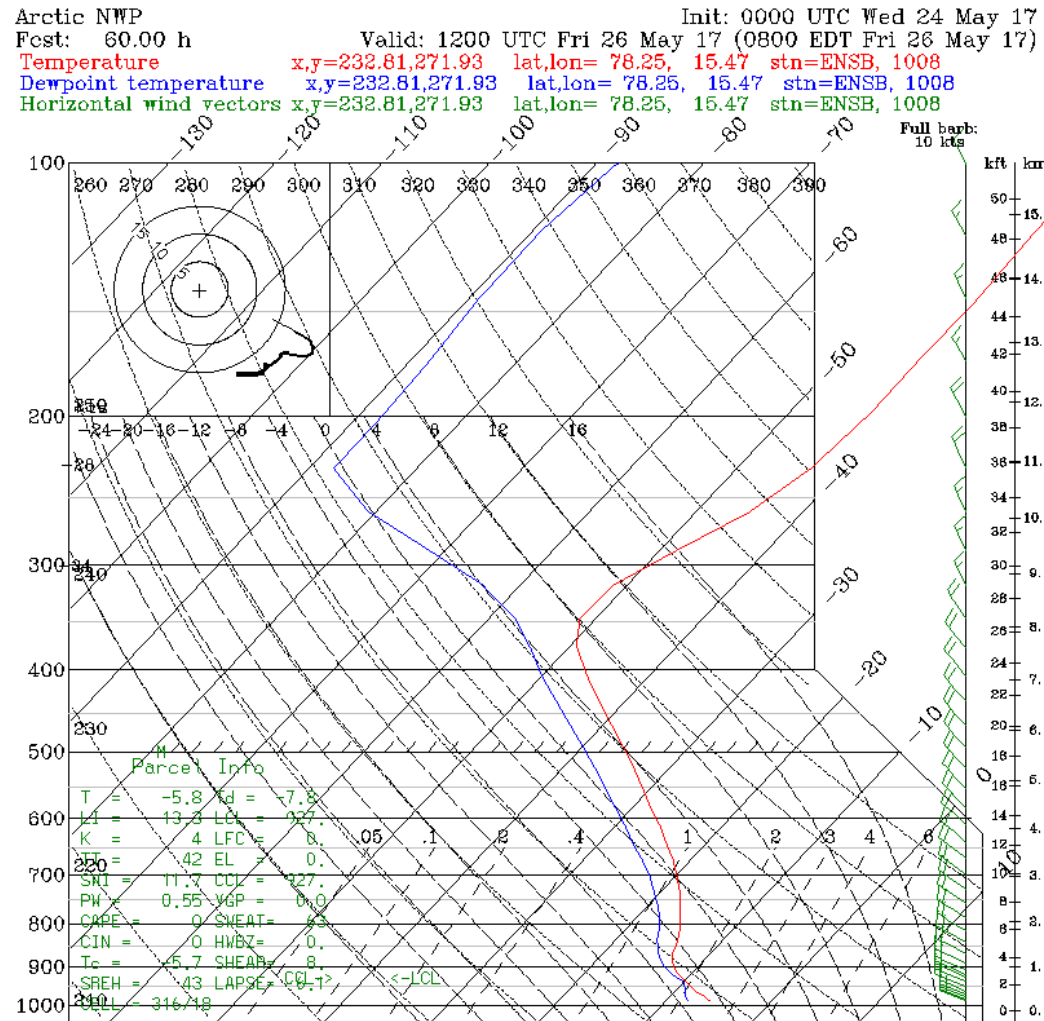
# Outlook – Meteogram

YR.no





# Sounding Longyearbyen 26 May 2017 @ 12 UTC





# Precip. Water 25 May 2017

GFS 0.25°x0.25°  
Daily Average

Precipitable Water  
Thursday, May 25, 2017

