

Weather briefing

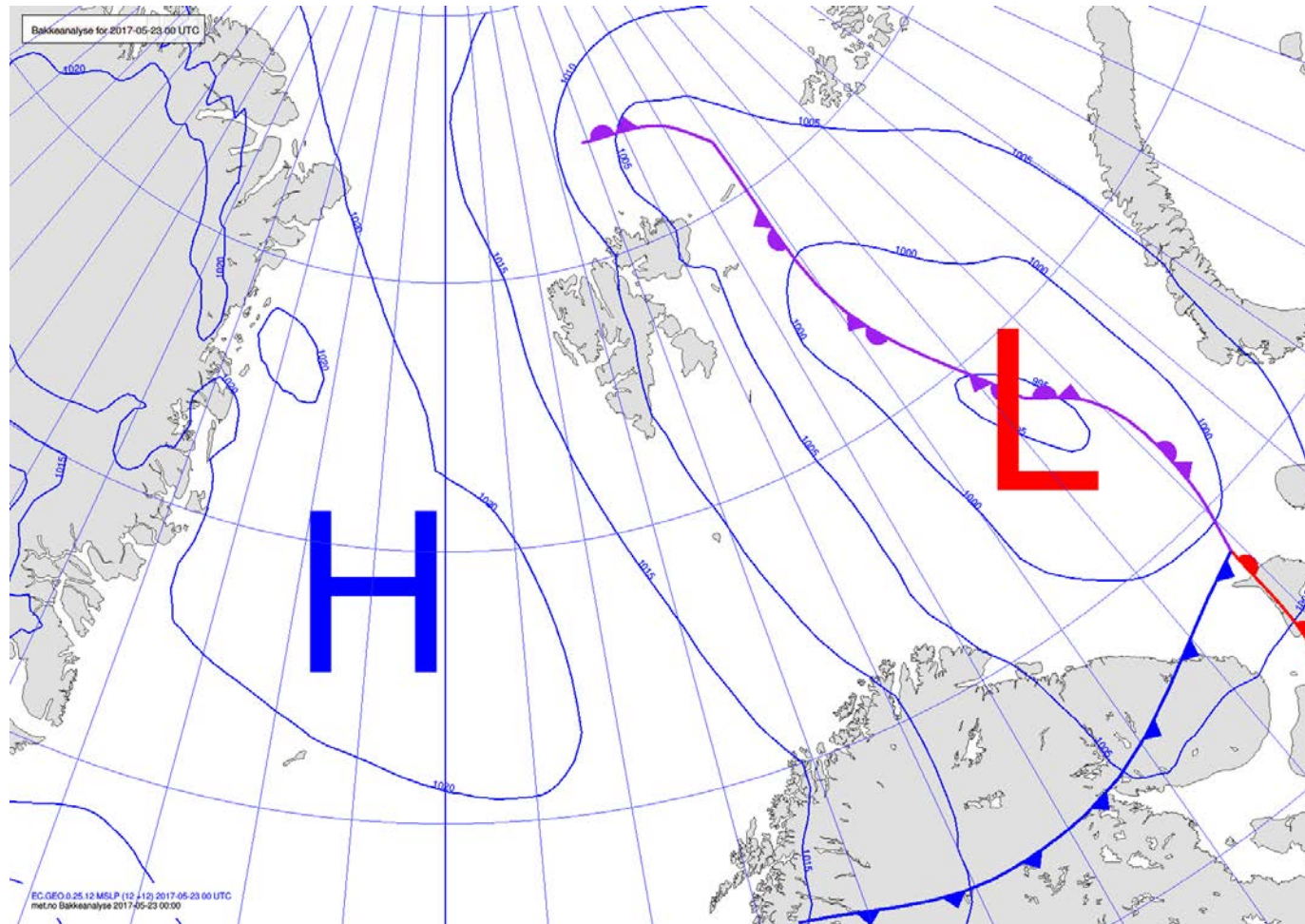
ACLOUD Longyearbyen, Svalbard

Tue 23 May 2017 – **Wed 24 May** – Fri 26 May 2017

Summary

A low pressure system with center in the Barents sea is slowly moving eastwards, directing a northwesterly airflow over Svalbard area – Arctic cold-air-outbreak in the Fram Strait.

Analysis 23 May 2017 @ 00 UTC

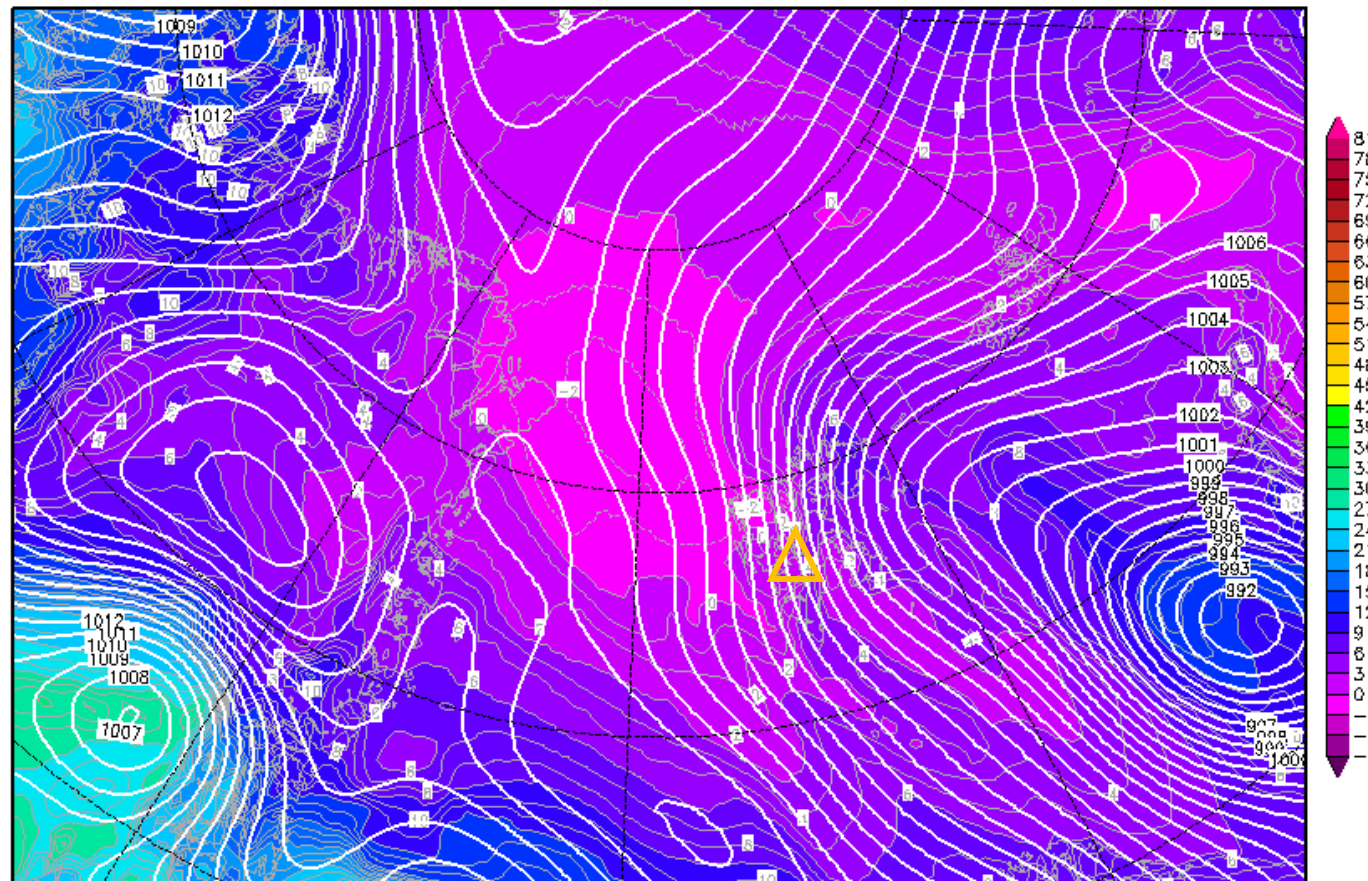


850-hPa Theta Equiv. 22 May 2017 @ 12 UTC

Init : Mon,22MAY2017 18Z

Valid: Tue,23MAY2017 12Z

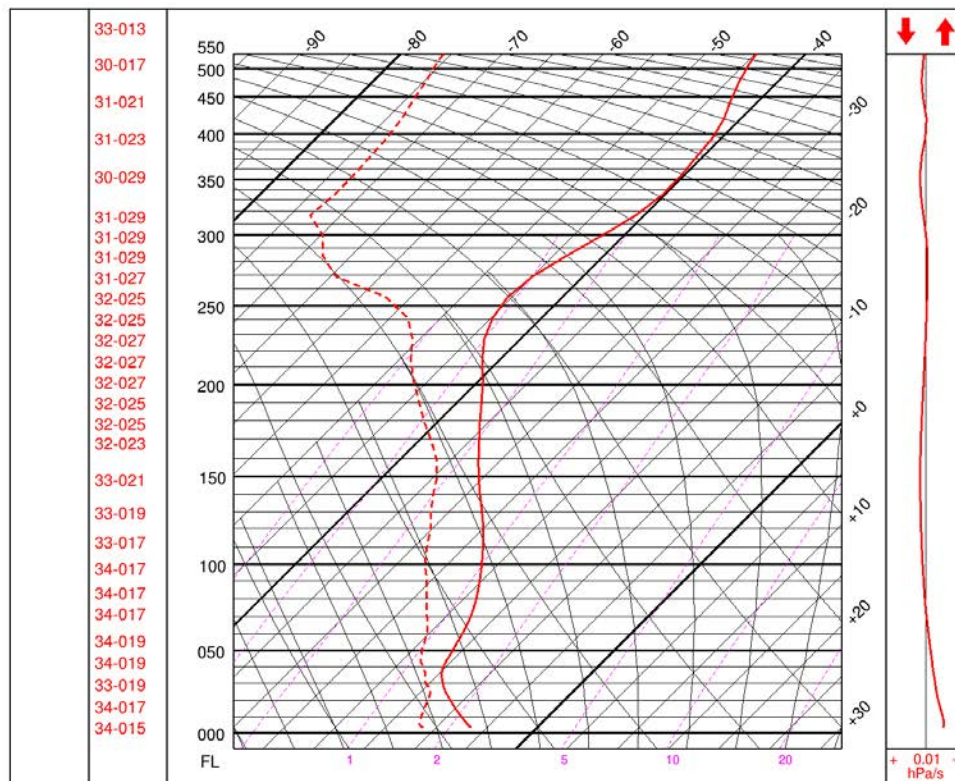
Bodendruck (hPa) und 850 hPa Aeq.Pot.T. (Grad C)



Daten: GFS-Modell des amerikanischen Wetterdienstes
(C) Wetterzentrale
www.wetterzentrale.de

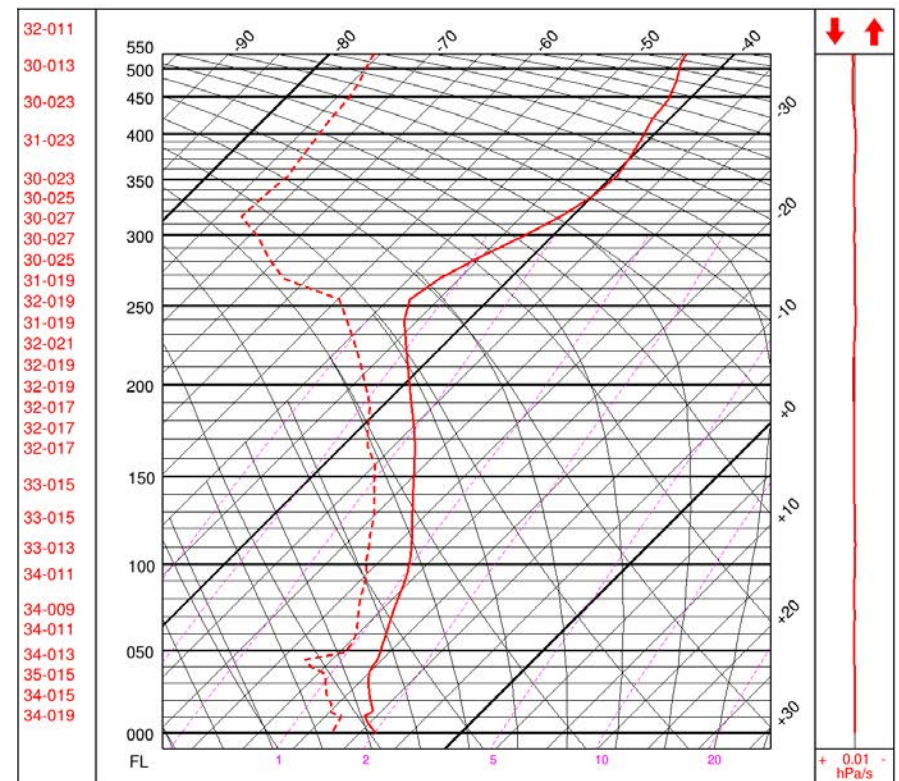
Soundings 23 May 2017 @ 00 UTC

Ny-Alesund



AROME-Arctic NY-ÅLESUND - 01004/ENAS (+12) 2017-05-23 12:00 UTC (78.9233N 11.9221E) K=-4

80°N 5°E

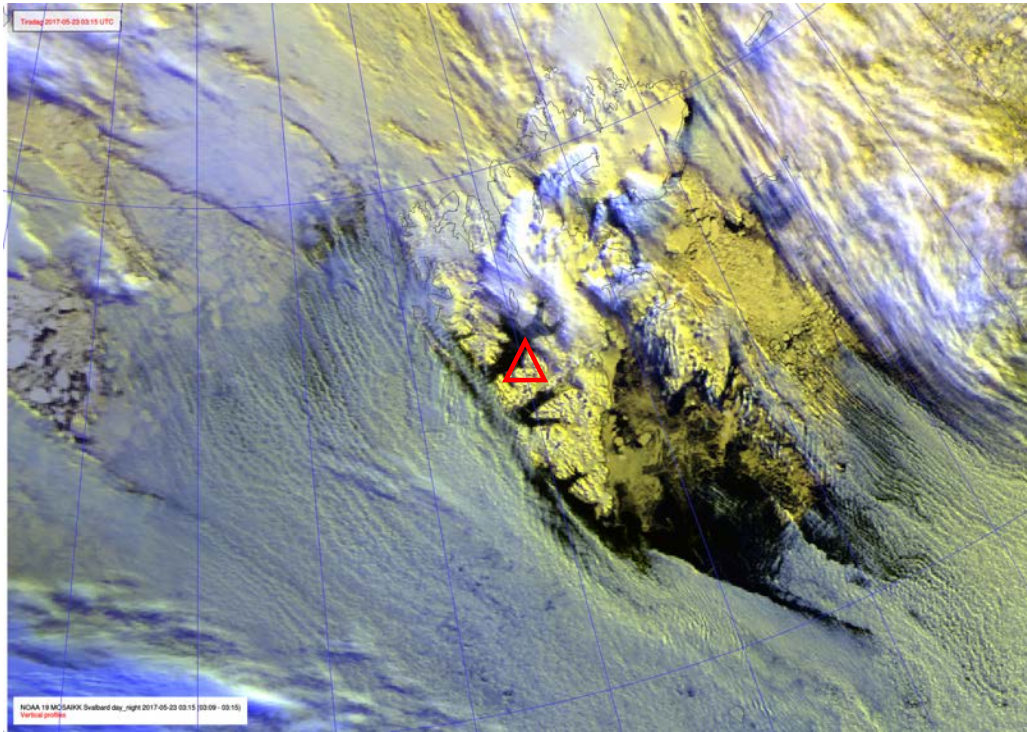


vrctic N8000 E00500 (+12) 2017-05-23 12:00 UTC (80N 5E) K=-4

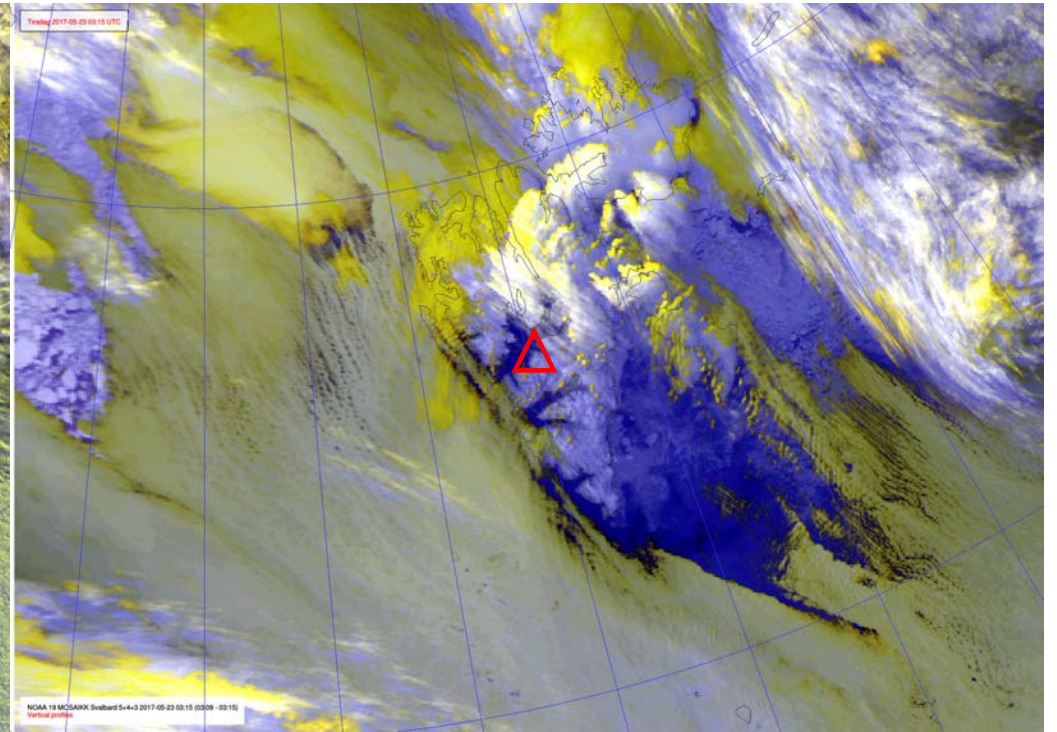
NOAA 23 May 2017 @ 0300-1200 UTC

20170523_0000

NOAA-19 23 May 2017 @ 0515 UTC

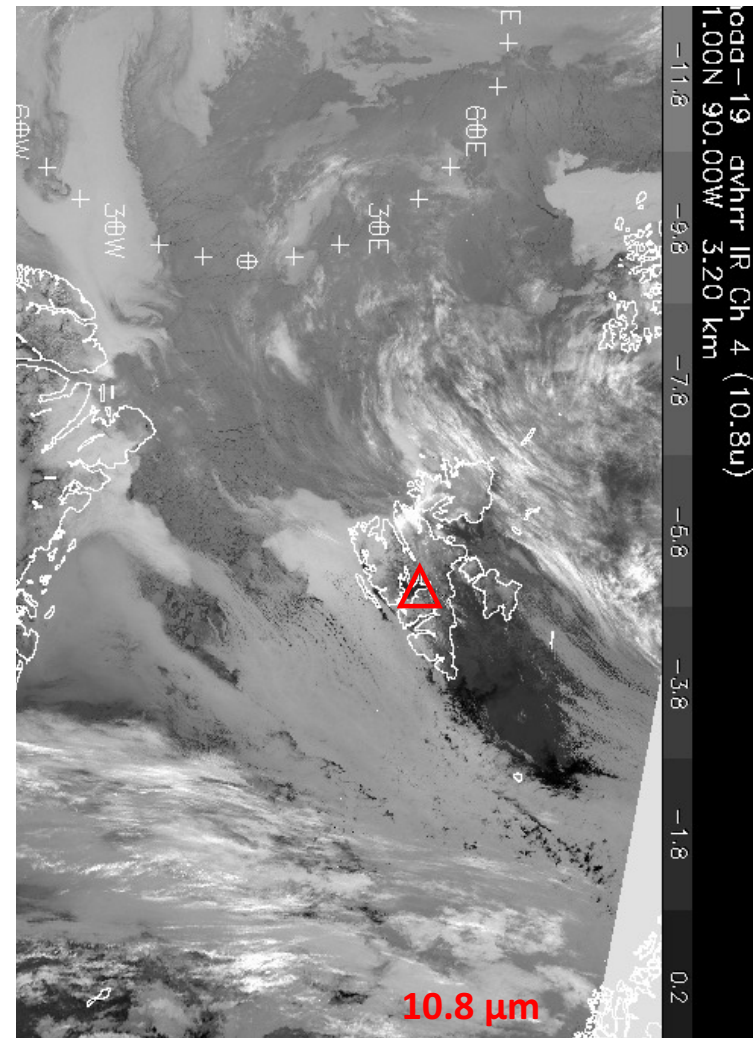
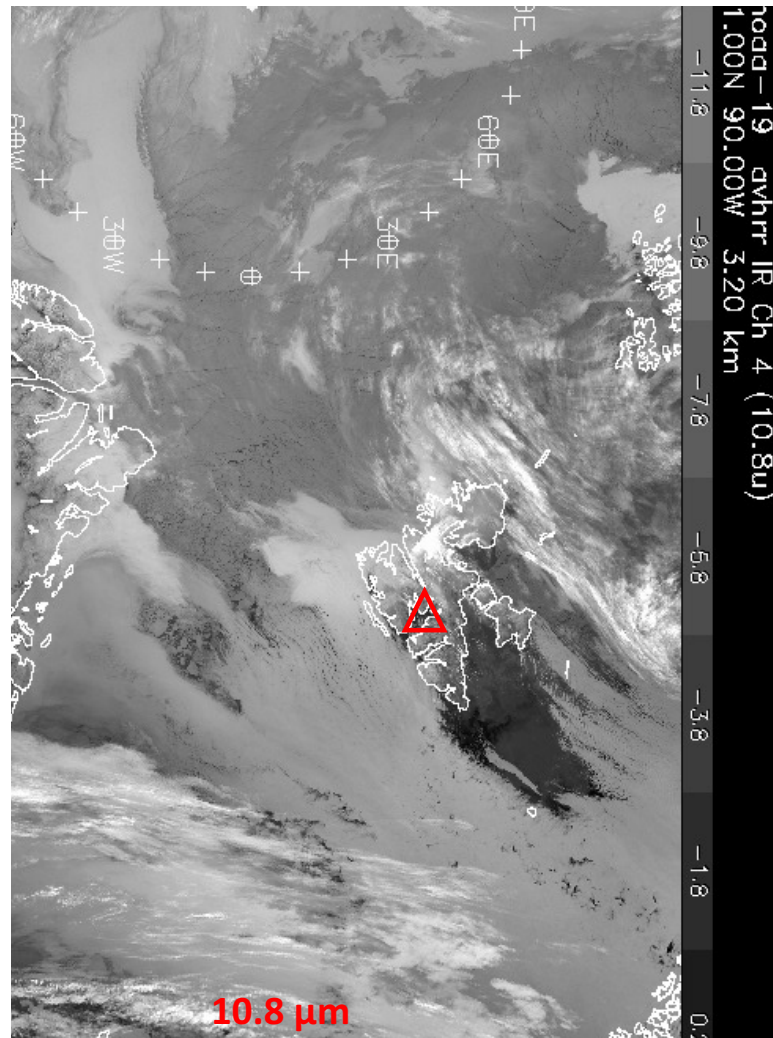


10.8 μm

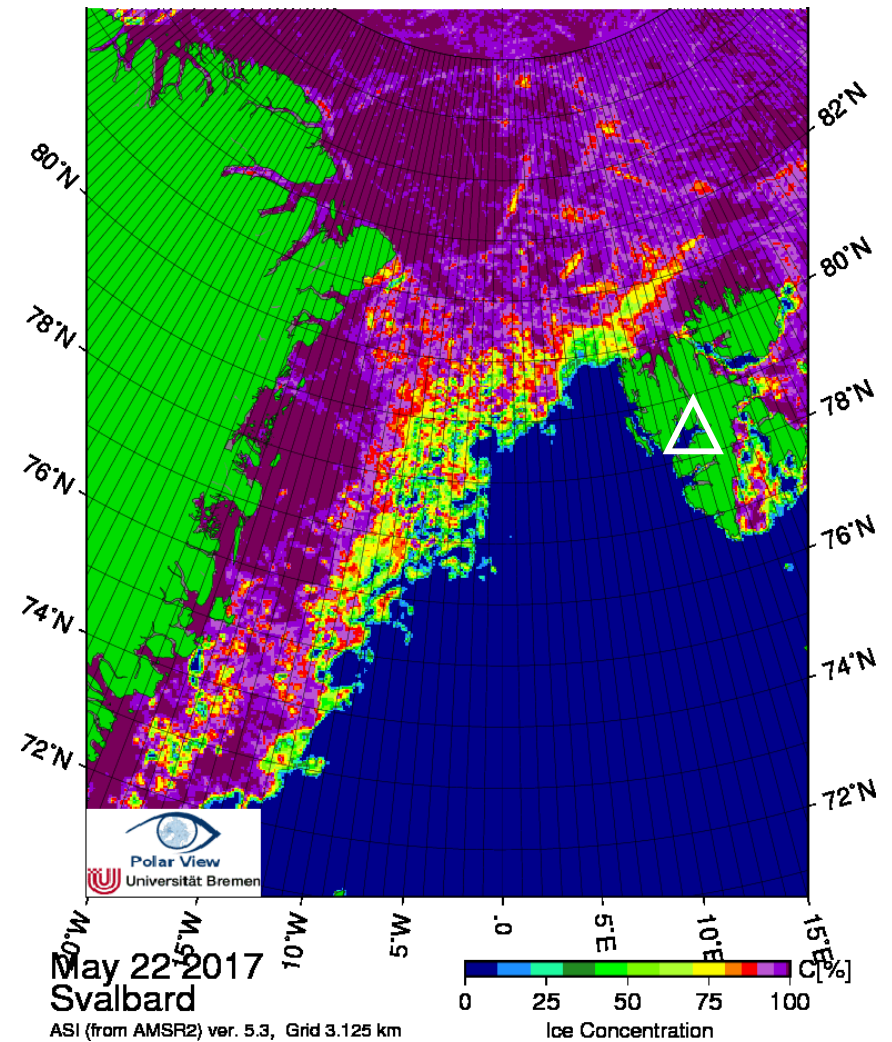
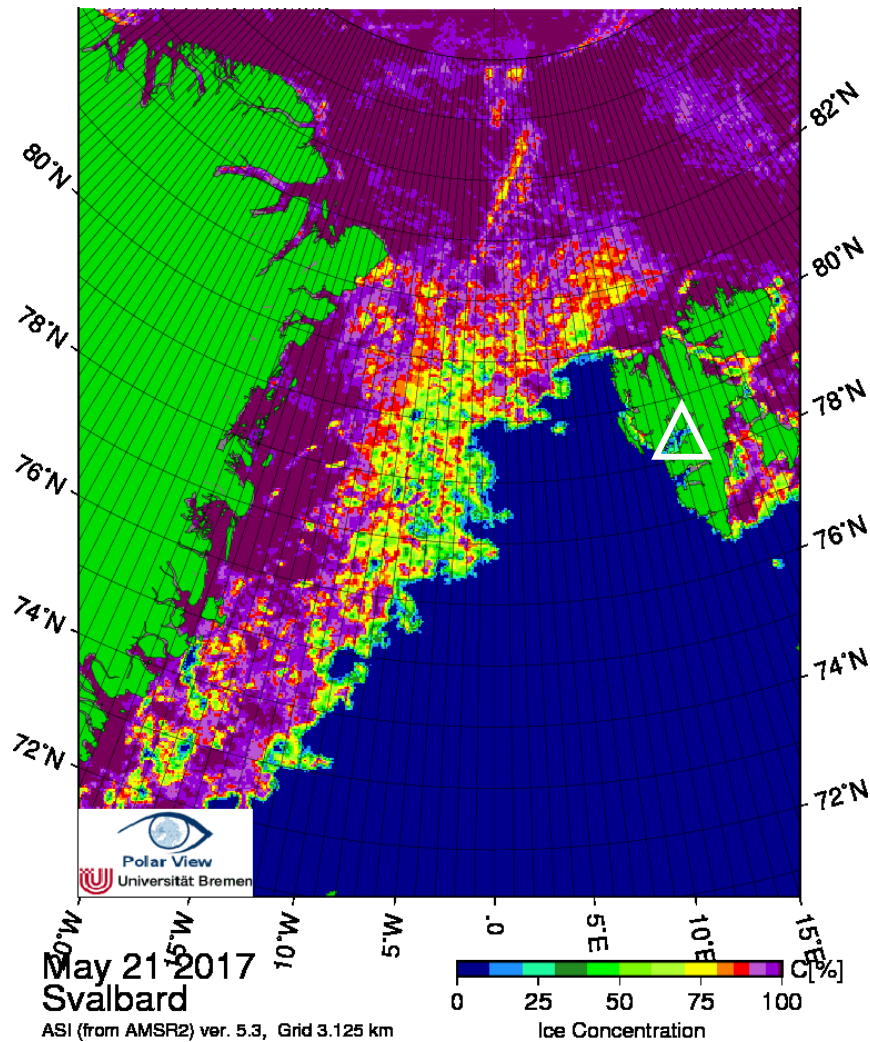


IR, Ch 5+4+3

NOAA-19 22 May 2017 @ 0817 & 0958 UTC



Arctic sea ice 21 & 22 May 2017



Flight Day

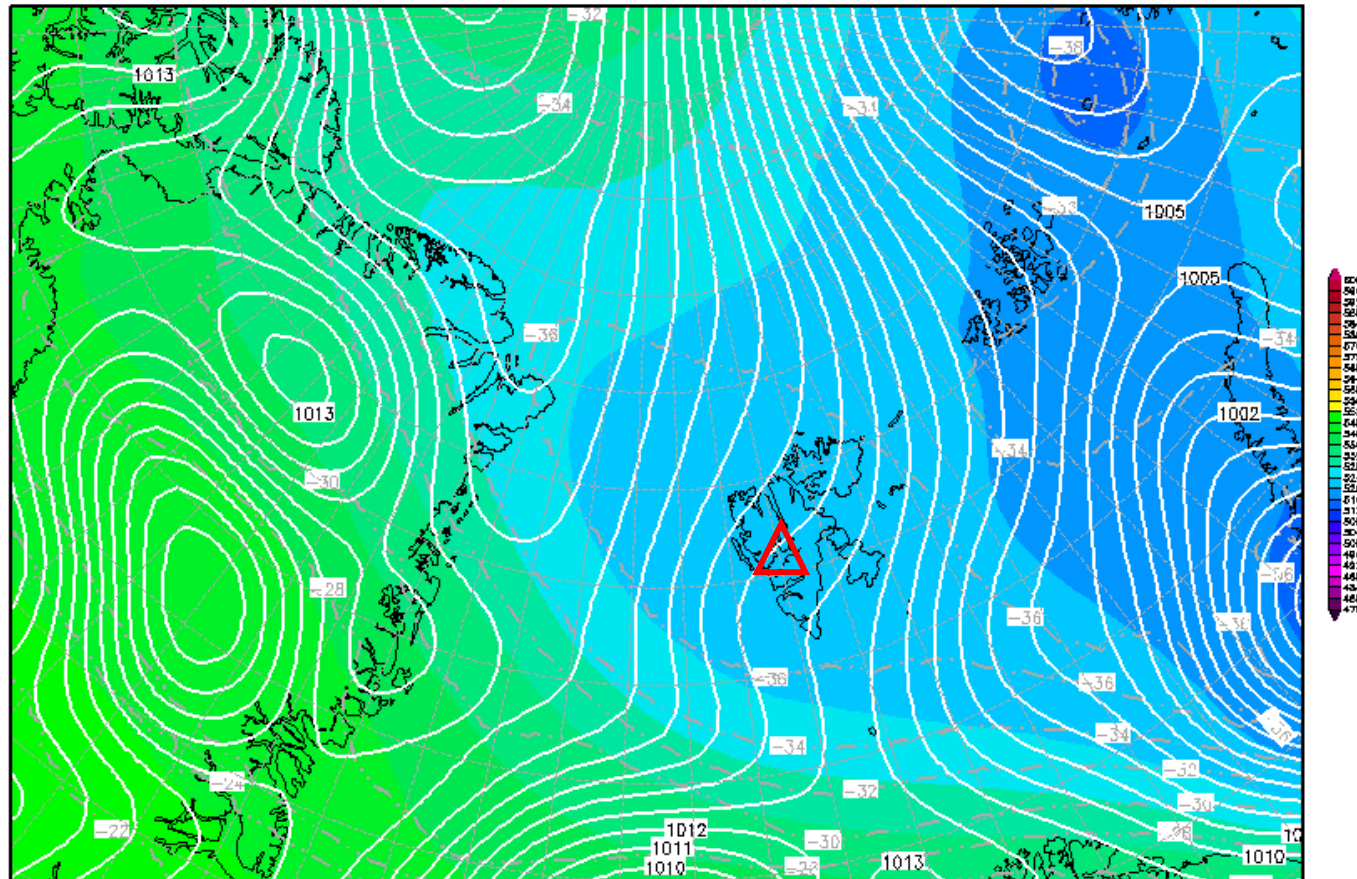
Wed 24 May 2017

500-hPa Geopotential 24 May 2017 @ 12 UTC

Init : Mon,22MAY2017 18Z

Valid: Wed,24MAY2017 12Z

500 hPa Geopot.(gpm), T (C) und Bodendr. (hPa)

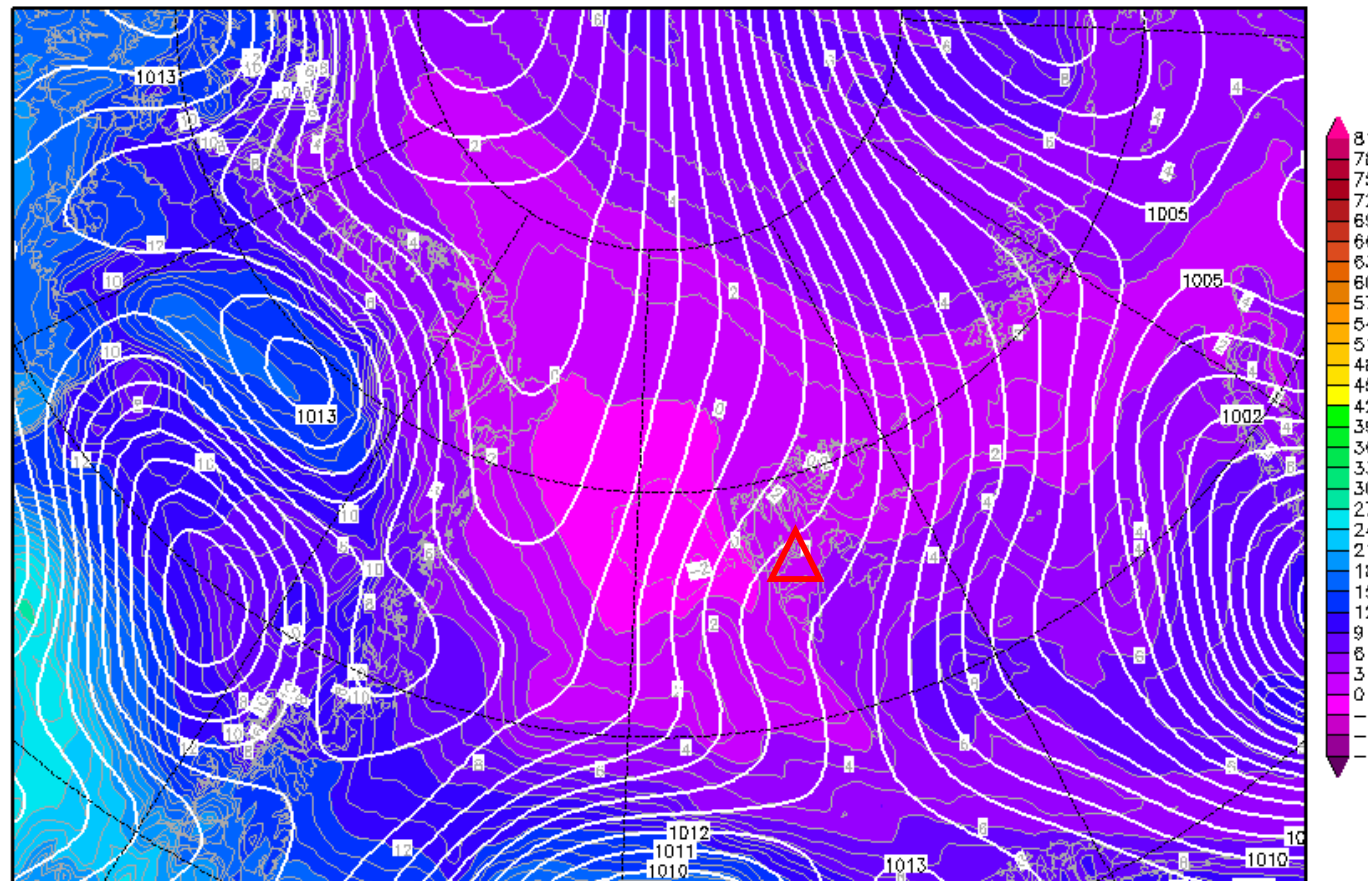


850-hPa Theta Equiv. 24 May 2017 @ 12 UTC

Init : Mon,22MAY2017 18Z

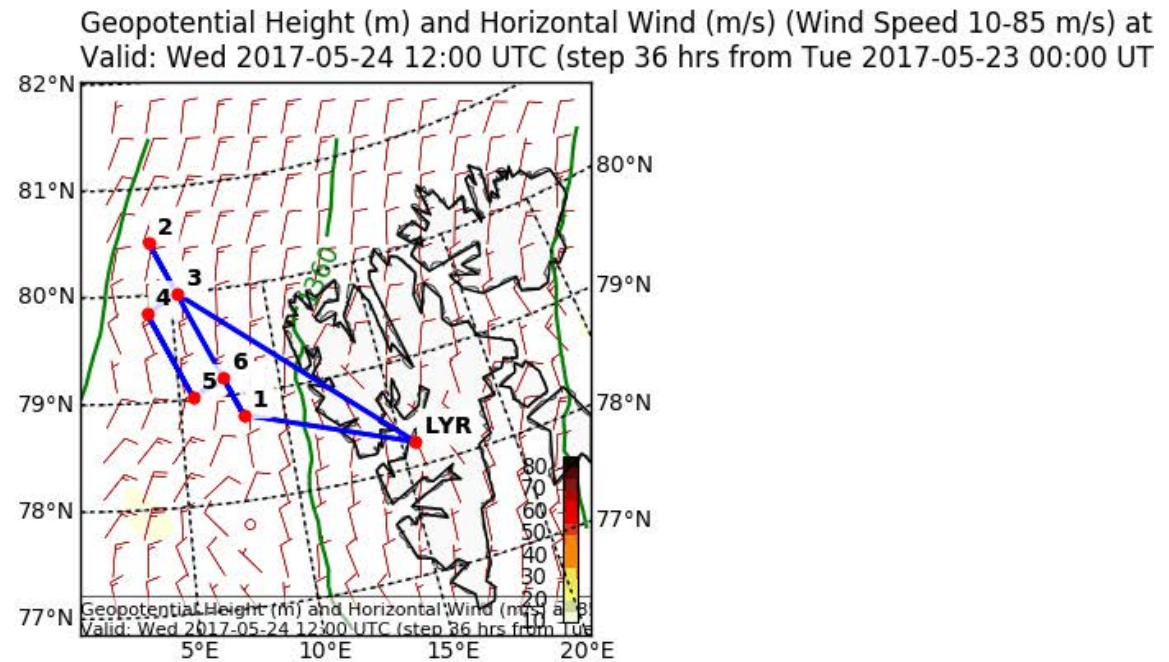
Valid: Wed,24MAY2017 12Z

Bodendruck (hPa) und 850 hPa Aeq.Pot.T. (Grad C)



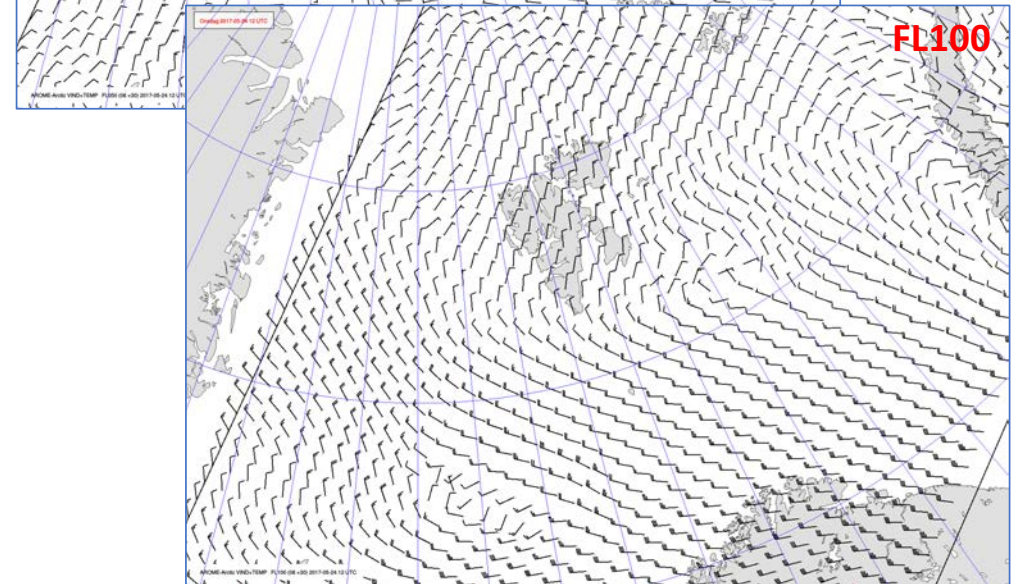
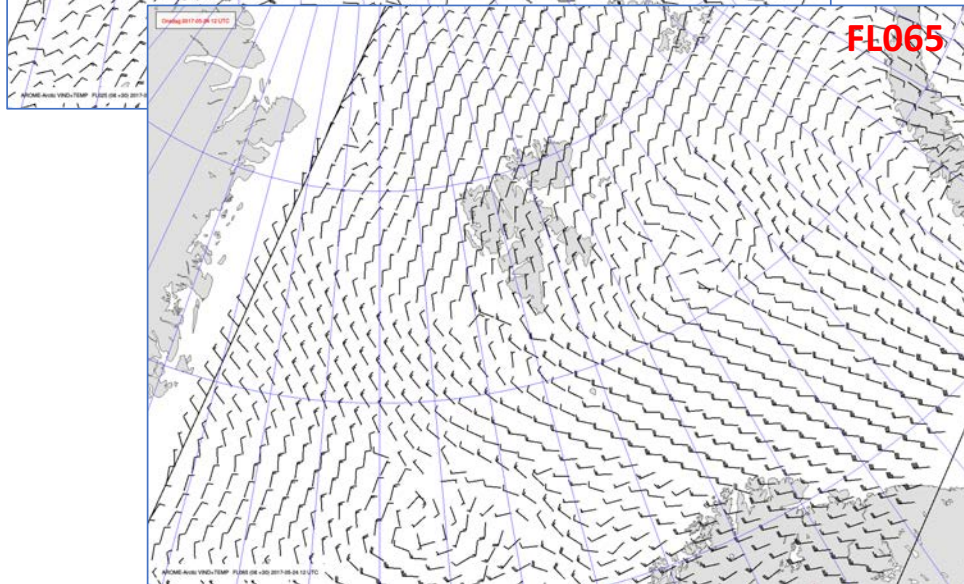
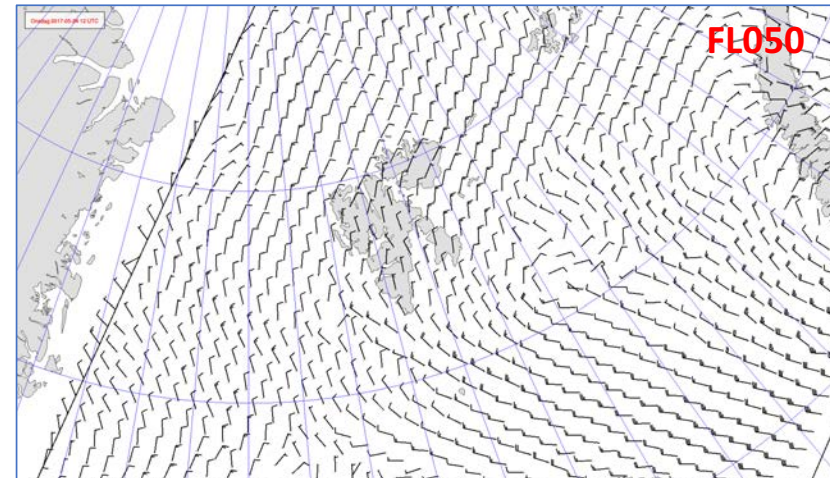
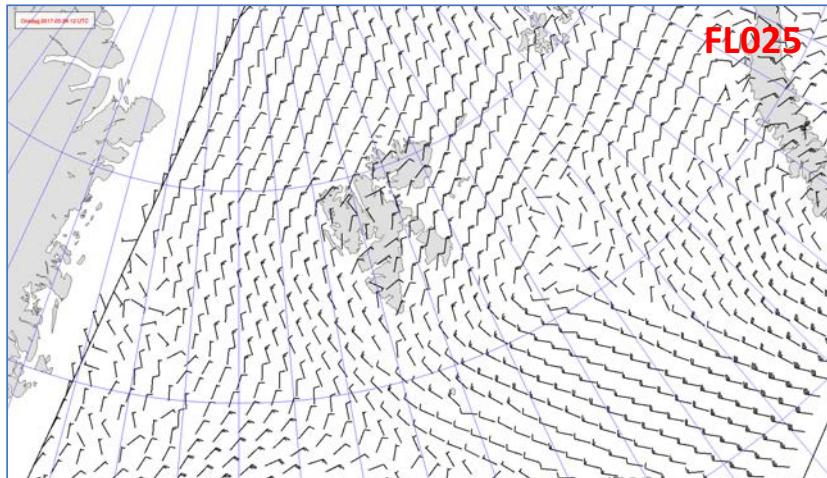
Daten: GFS—Modell des amerikanischen Wetterdienstes
(C) Wetterzentrale
www.wetterzentrale.de

Forecast Tomorrow 12 UTC

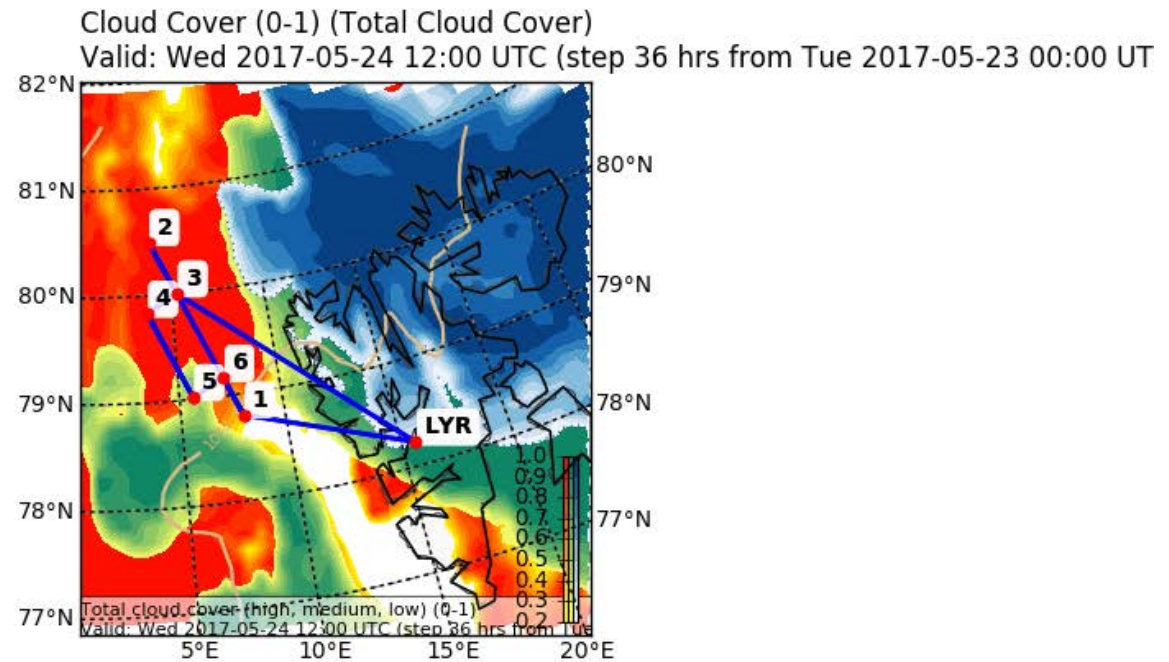


EPSG:77790000

Wind 24 May 2017 @ 12 UTC



Forecast Tomorrow 12 UTC

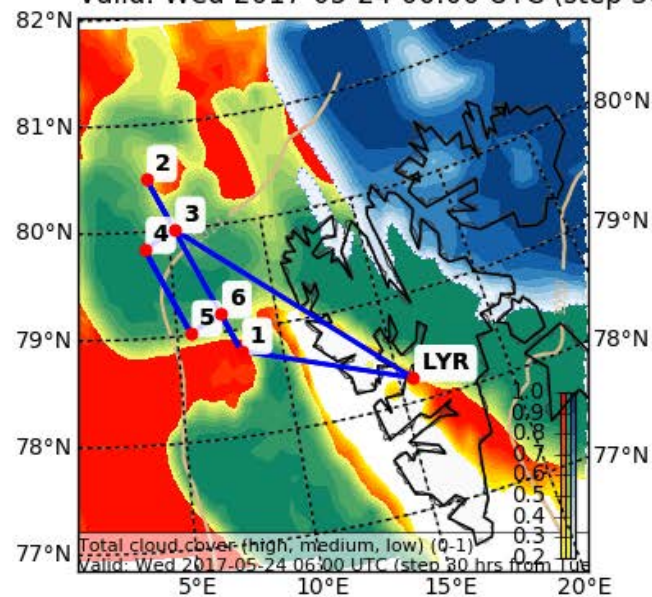


EPSG:77790000

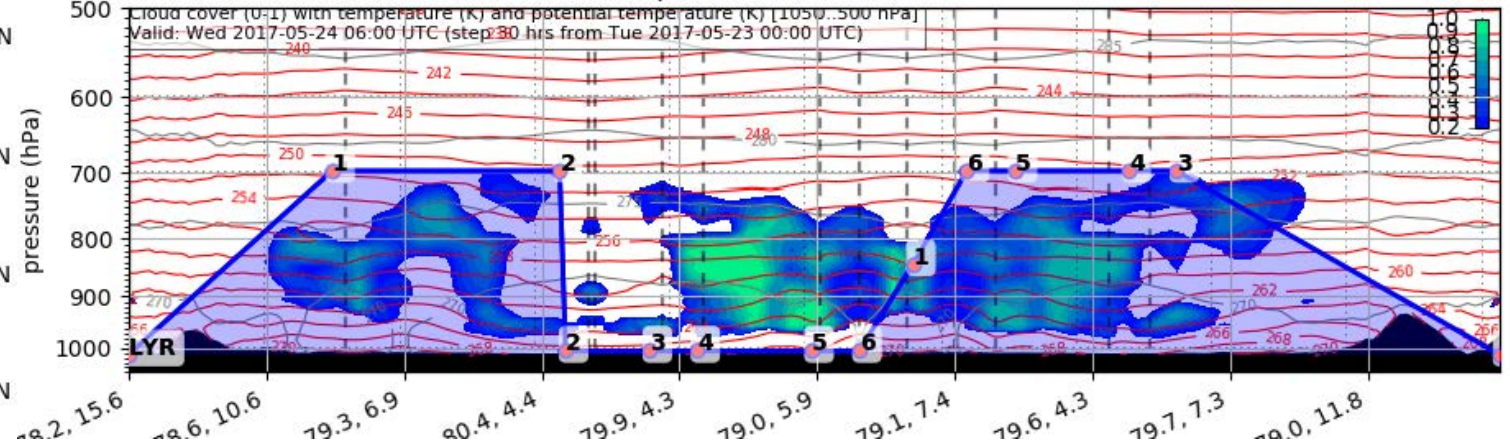
Forecast Tomorrow 06 UTC

Cloud Cover (0-1) (Total Cloud Cover)

Valid: Wed 2017-05-24 06:00 UTC (step 30)

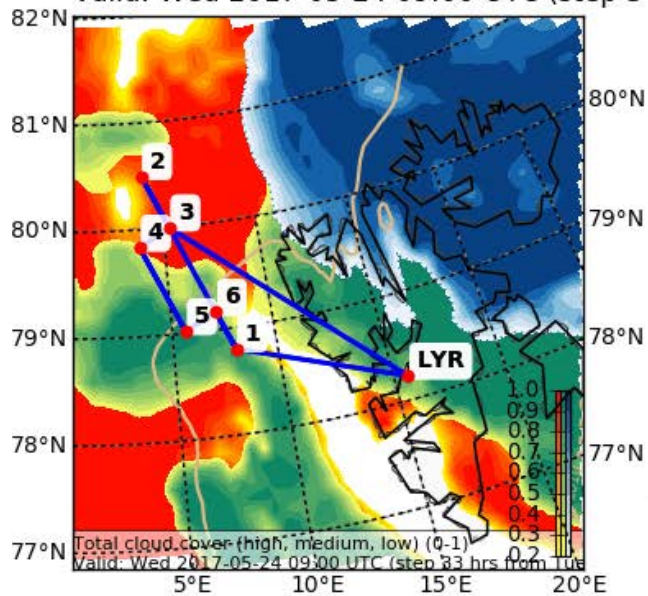


Valid: Wed 2017-05-24 06:00 UTC (step 30 hrs from Tue 2017-05-23 00:00 UTC)

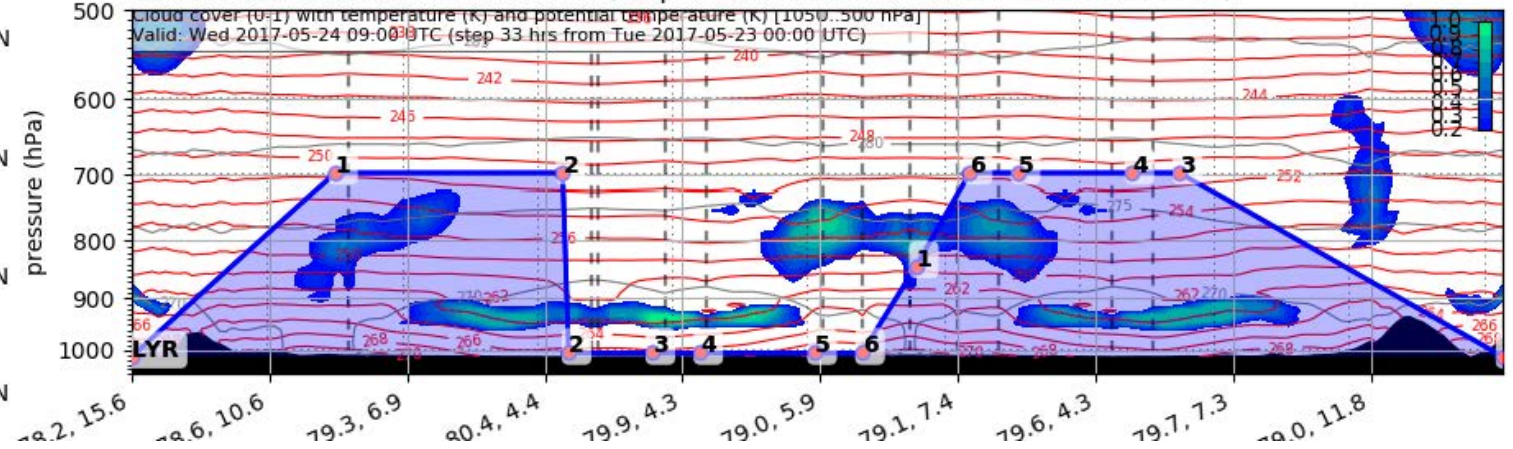


Forecast Tomorrow 09 UTC

Cloud Cover (0-1) (Total Cloud Cover)
Valid: Wed 2017-05-24 09:00 UTC (step 3)

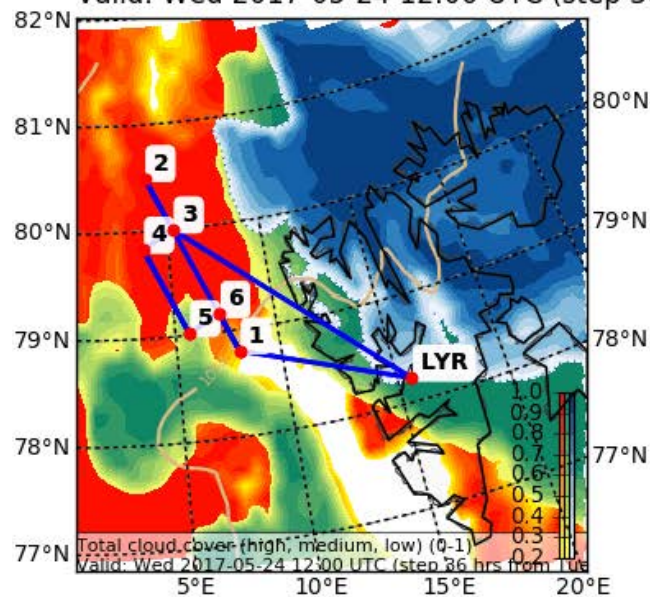


Valid: Wed 2017-05-24 09:00 UTC (step 33 hrs from Tue 2017-05-23 00:00 UTC)

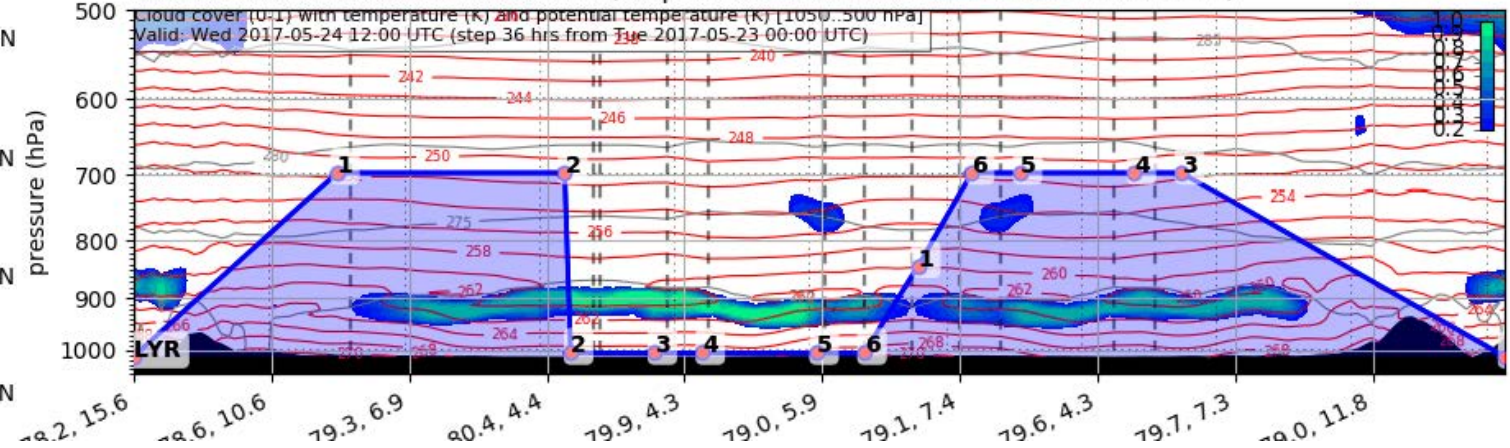


Forecast Tomorrow 12 UTC

Cloud Cover (0-1) (Total Cloud Cover)
Valid: Wed 2017-05-24 12:00 UTC (step 3)

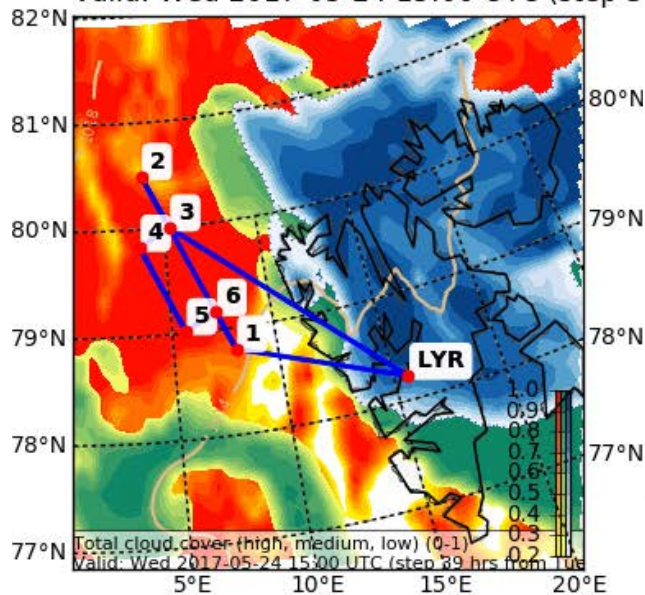


Valid: Wed 2017-05-24 12:00 UTC (step 36 hrs from Tue 2017-05-23 00:00 UTC)

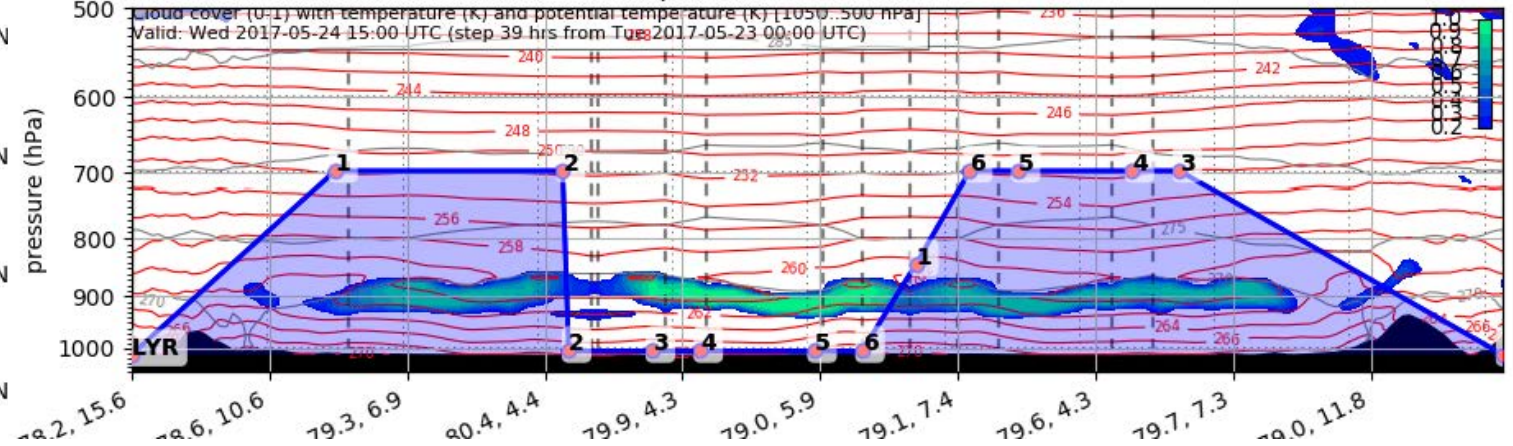


Forecast Tomorrow 15 UTC

Cloud Cover (0-1) (Total Cloud Cover)
Valid: Wed 2017-05-24 15:00 UTC (step 3)

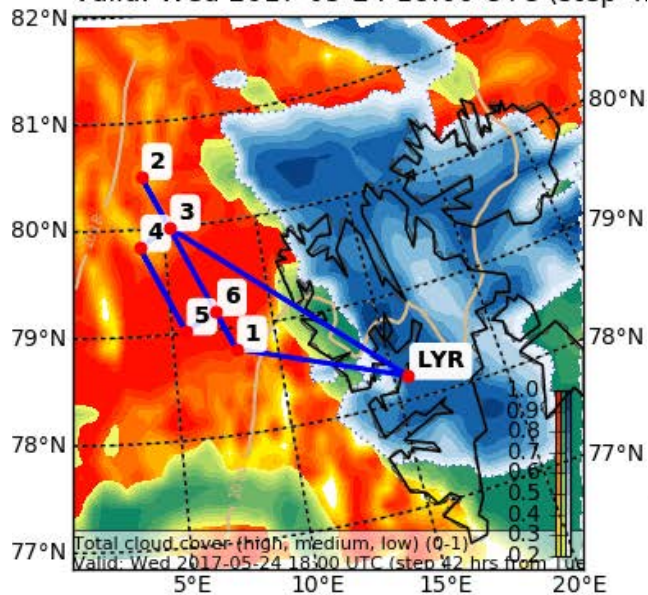


Valid: Wed 2017-05-24 15:00 UTC (step 39 hrs from Tue 2017-05-23 00:00 UTC)

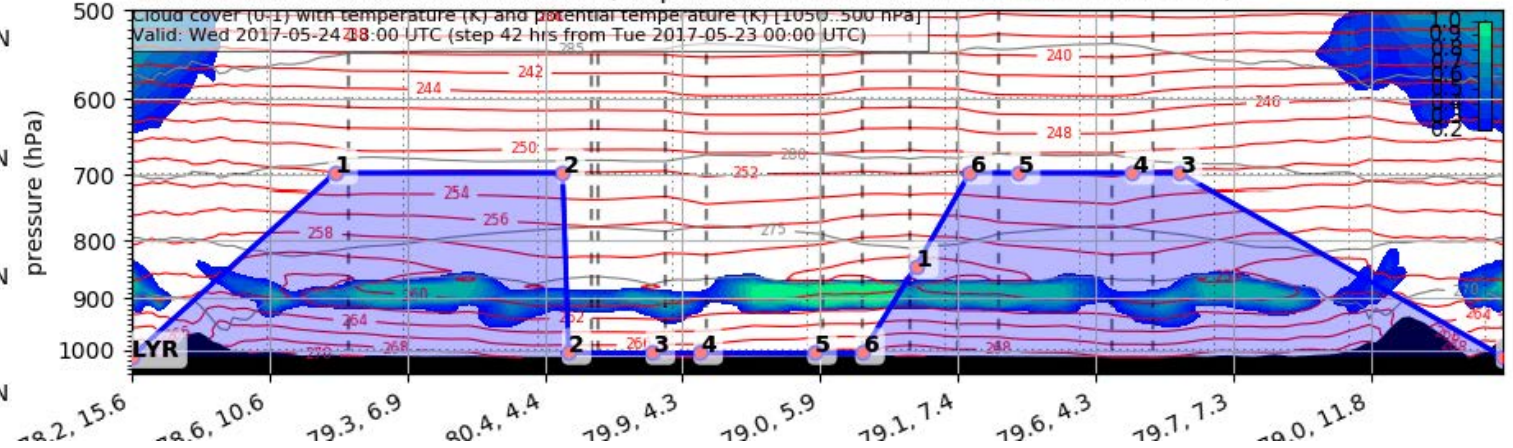


Forecast Tomorrow 18 UTC

Cloud Cover (0-1) (Total Cloud Cover)
Valid: Wed 2017-05-24 18:00 UTC (step 4)



Valid: Wed 2017-05-24 18:00 UTC (step 42 hrs from Tue 2017-05-23 00:00 UTC)

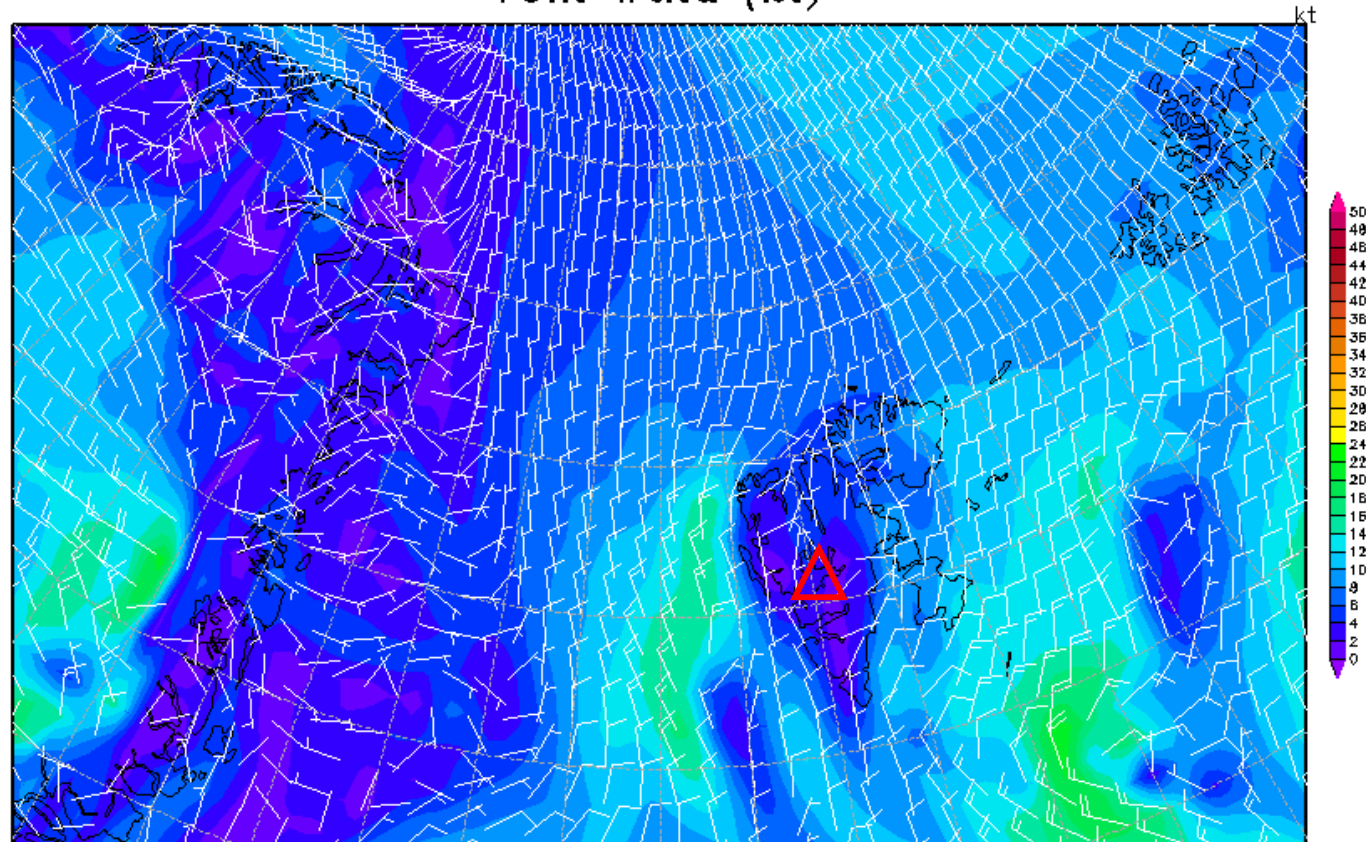


10-m Wind 24 May 2017 @ 12 UTC

Init : Mon,22MAY2017 18Z

Valid: Wed,24MAY2017 12Z

10m Wind (kt)



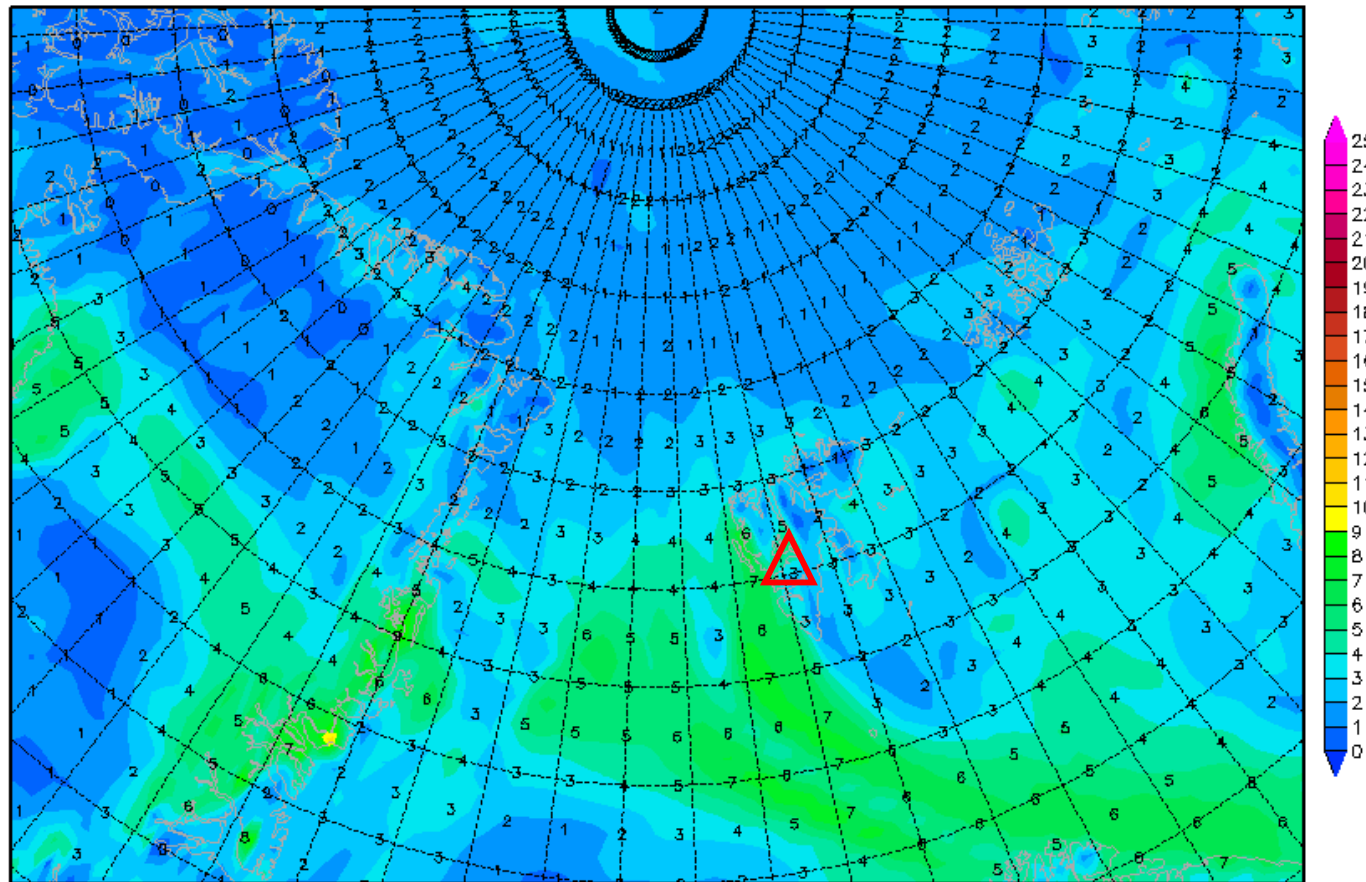
Daten: GFS-Modell des amerikanischen Wetterdienstes
(C) Wetterzentrale
www.wetterzentrale.de

2-m dew point diff. 24 May 2017 @ 12 UTC

Init : Mon,22MAY2017 18Z

Valid: Wed,24MAY2017 12Z

2m (Temperatur-Taupunkt)



Daten: GFS
(C) Wetterzentrale
www.wetterzentrale.de

Outlook

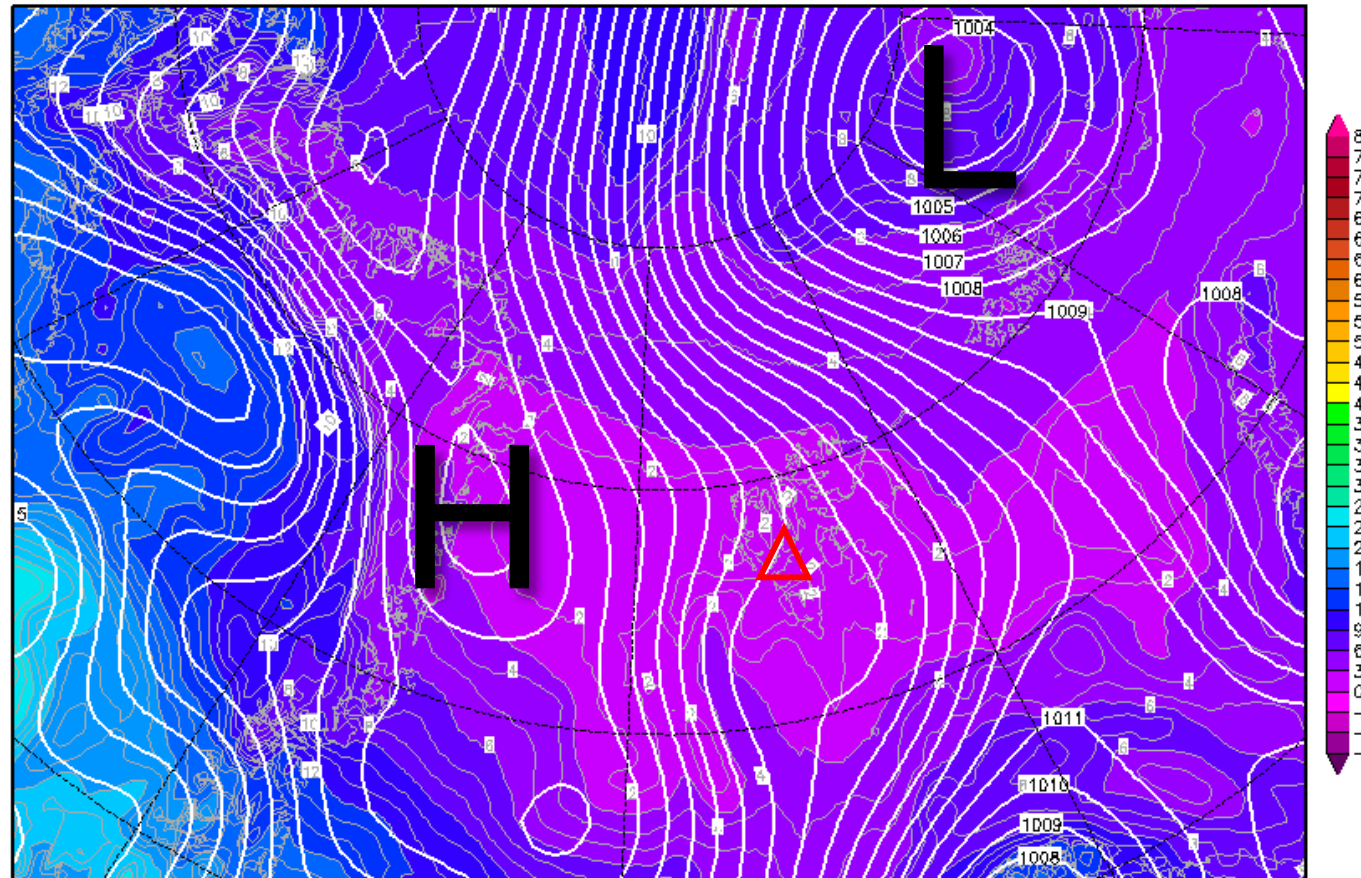
Thu 25 May – Fri 26 May 2017

Outlook – General Weather Situation

Init : Mon,22MAY2017 18Z

Valid: Thu,25MAY2017 12Z

Bodendruck (hPa) und 850 hPa Aeq.Pot.T. (Grad C)

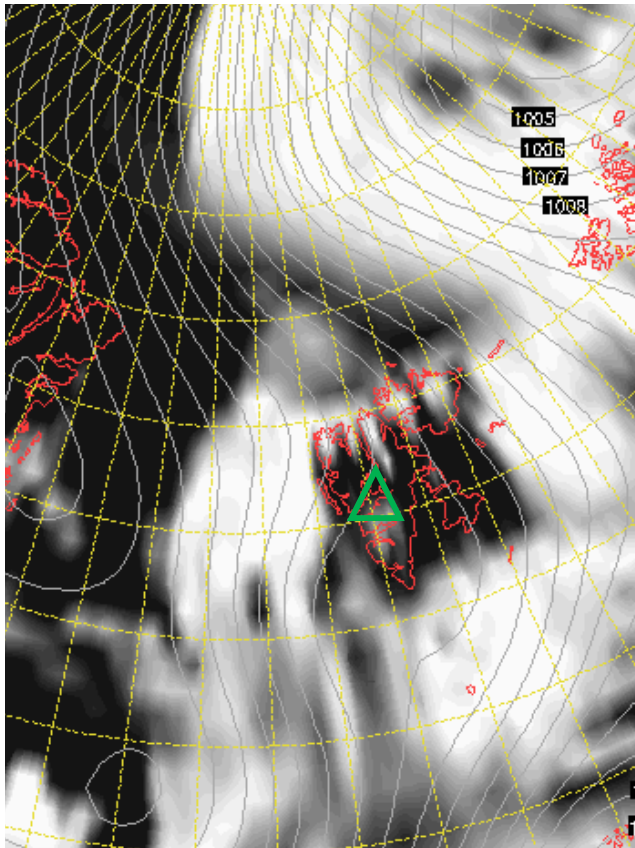


Surf. Pressure &
850-hPa Theta Equiv.
25 May 2017 @ 12 UTC

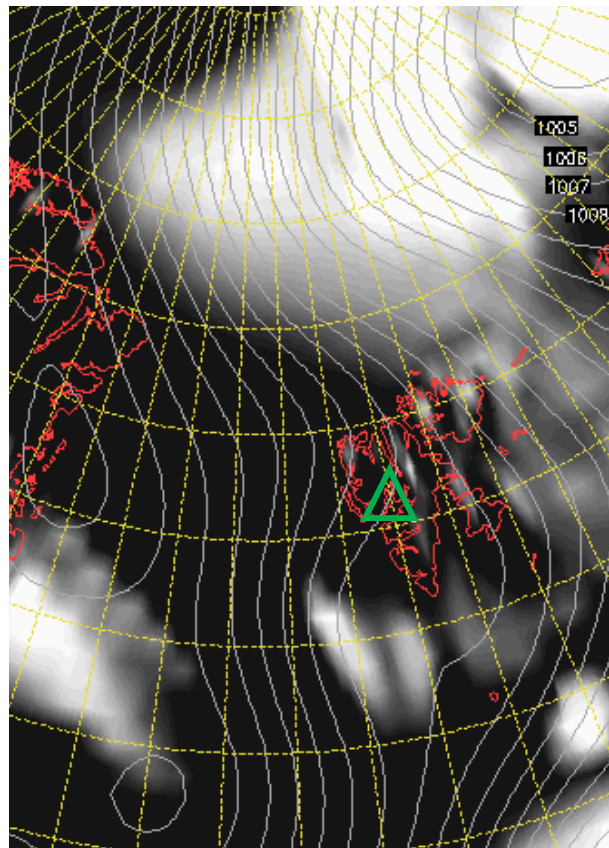
Daten: GFS-Modell des amerikanischen Wetterdienstes
(C) Wetterzentrale
www.wetterzentrale.de

Cloud Cover 25 May 2017 @ 12 UTC

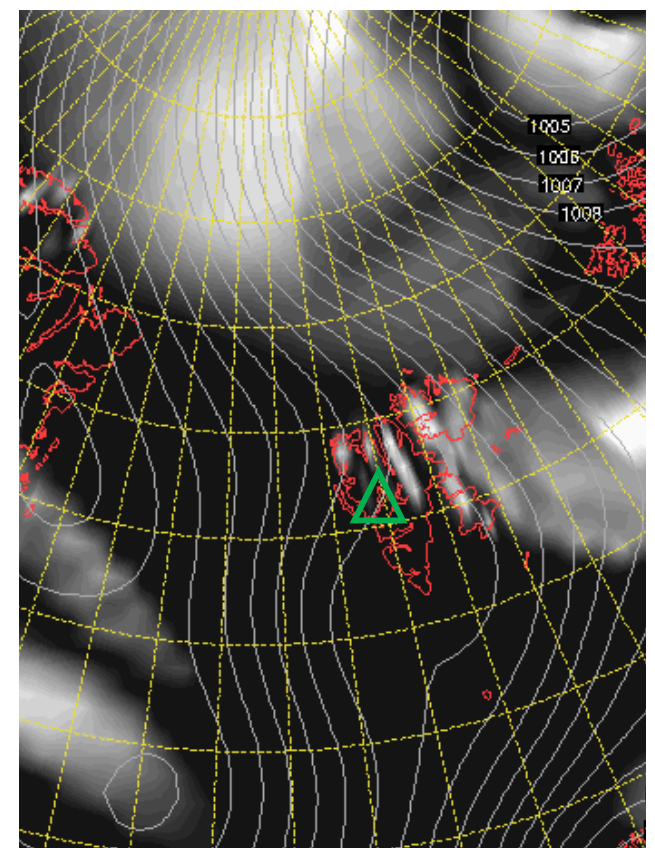
L



M

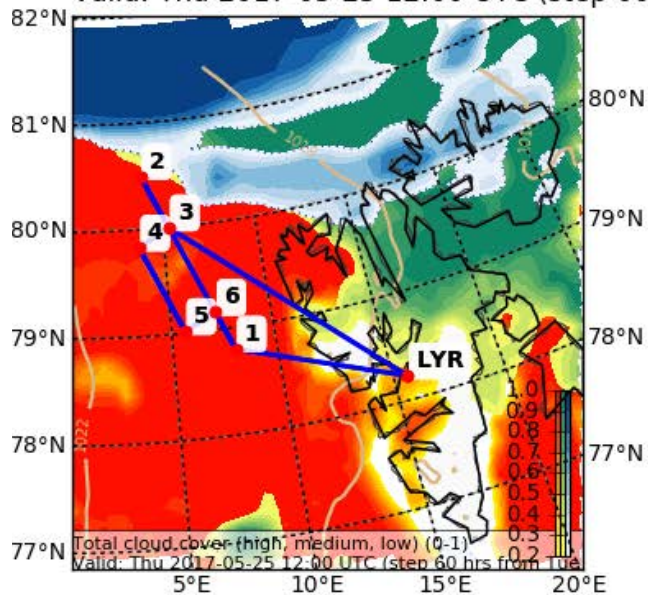


H

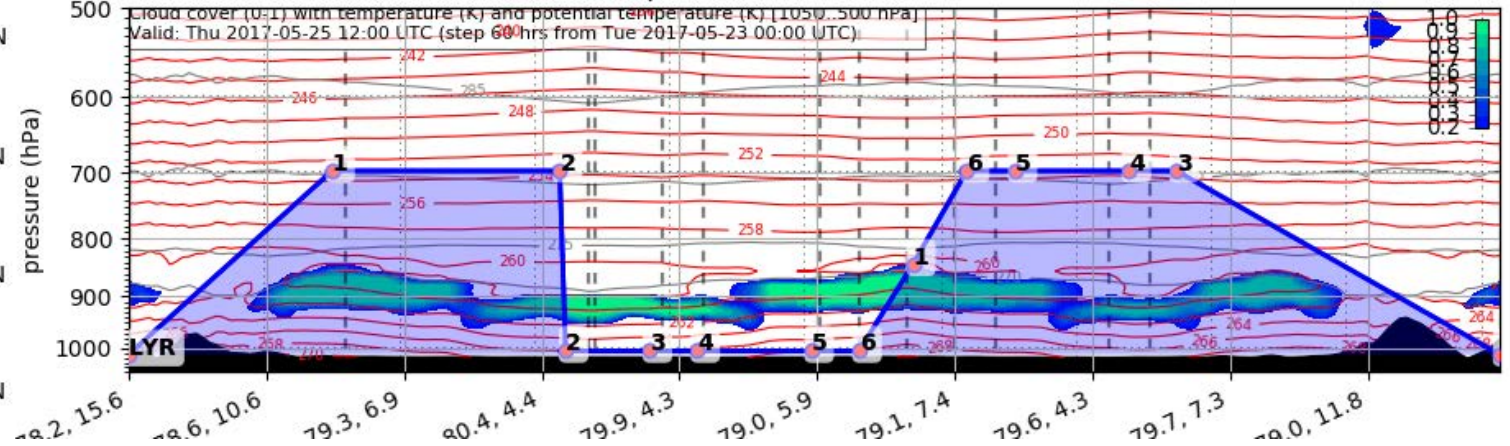


Forecast After Tomorrow 12 UTC

Cloud Cover (0-1) (Total Cloud Cover)
Valid: Thu 2017-05-25 12:00 UTC (step 60)



Valid: Thu 2017-05-25 12:00 UTC (step 60 hrs from Tue 2017-05-23 00:00 UTC)

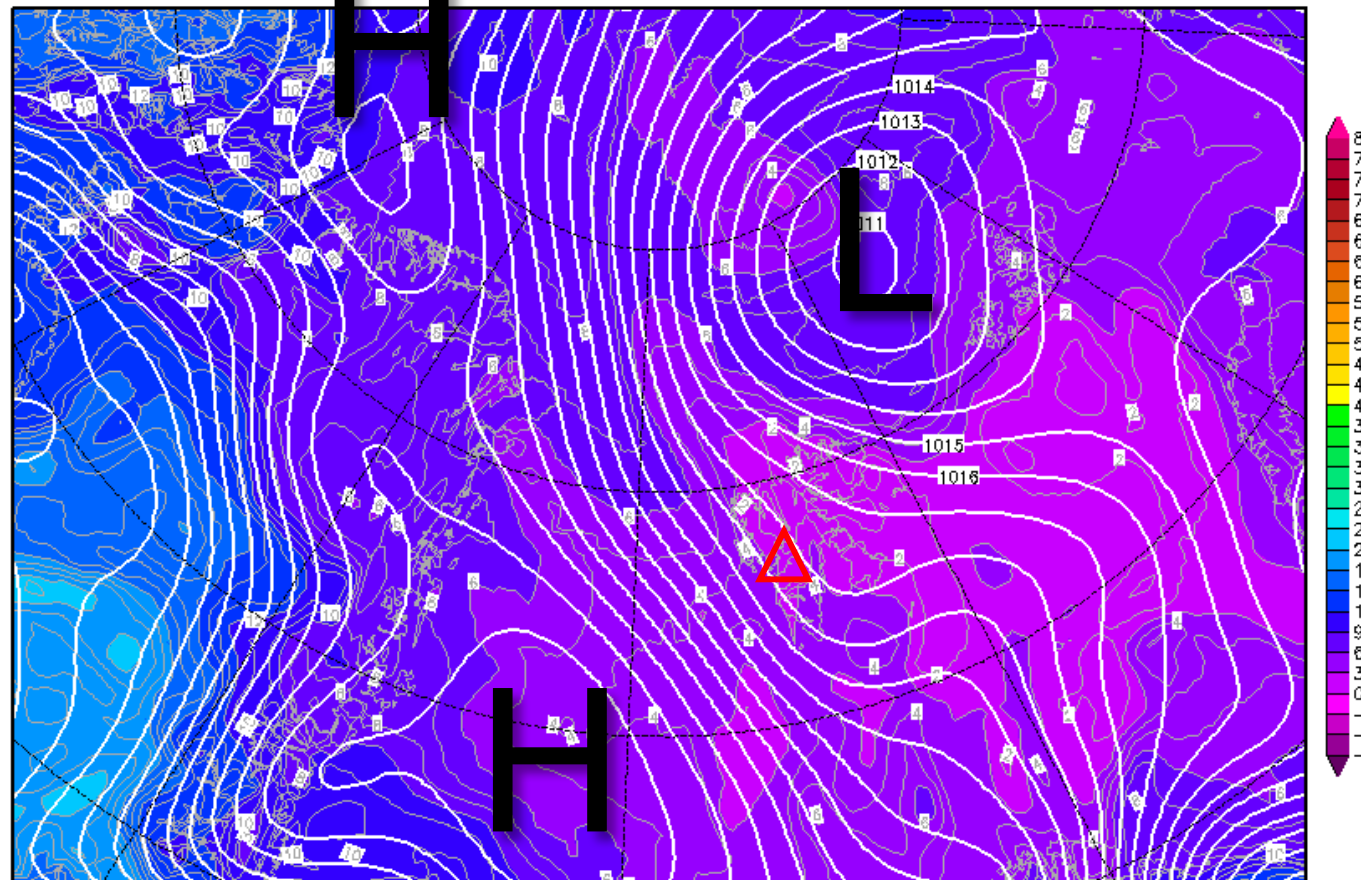


Outlook – General Weather Situation

Init : Mon,22MAY2017 18Z

Valid: Fri,26MAY2017 12Z

Bodendruck (hPa) und 850 hPa Aeq.Pot.T. (Grad C)



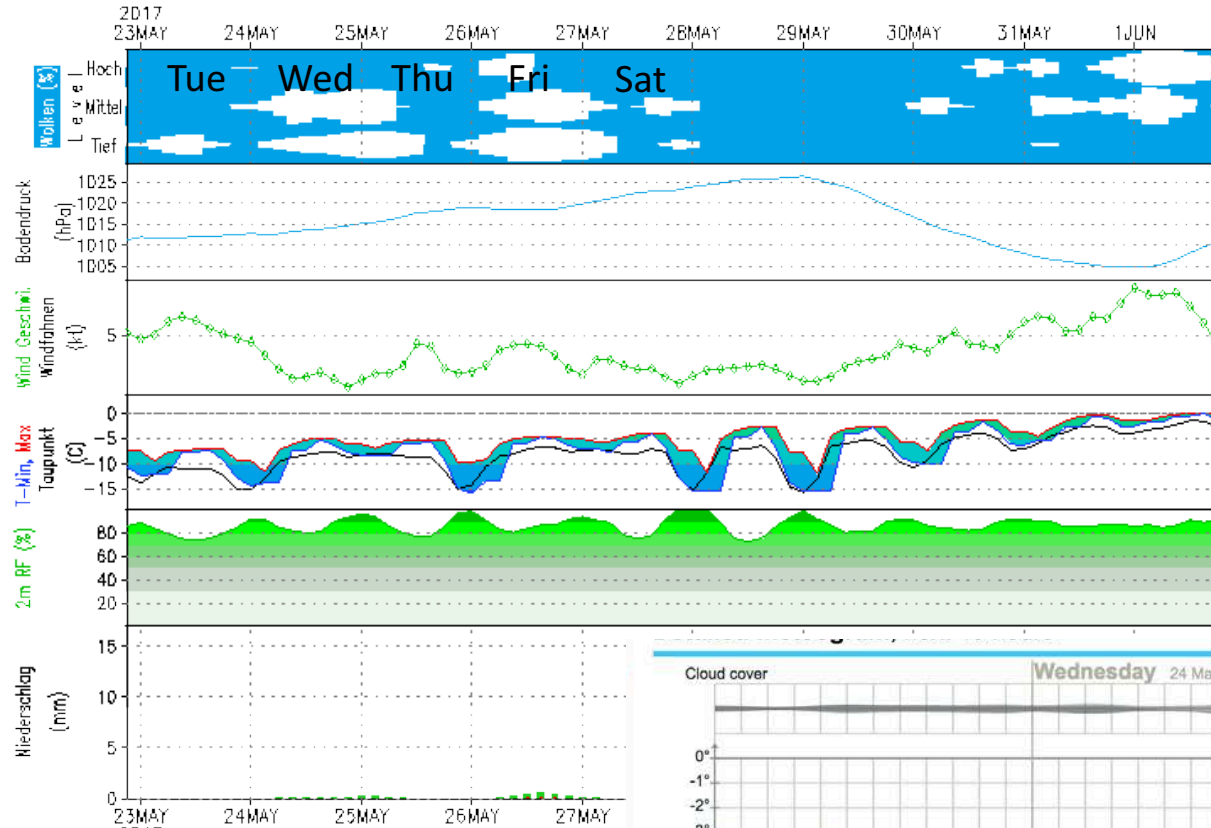
Surf. Pressure &
850-hPa Theta Equiv.
25 May 2017 @ 12 UTC

Daten: GFS-Modell des amerikanischen Wetterdienstes
(C) Wetterzentrale
www.wetterzentrale.de

GFS – Meteogramm

Lon: 15.63 Lat: 78.22 Hgt: 331m

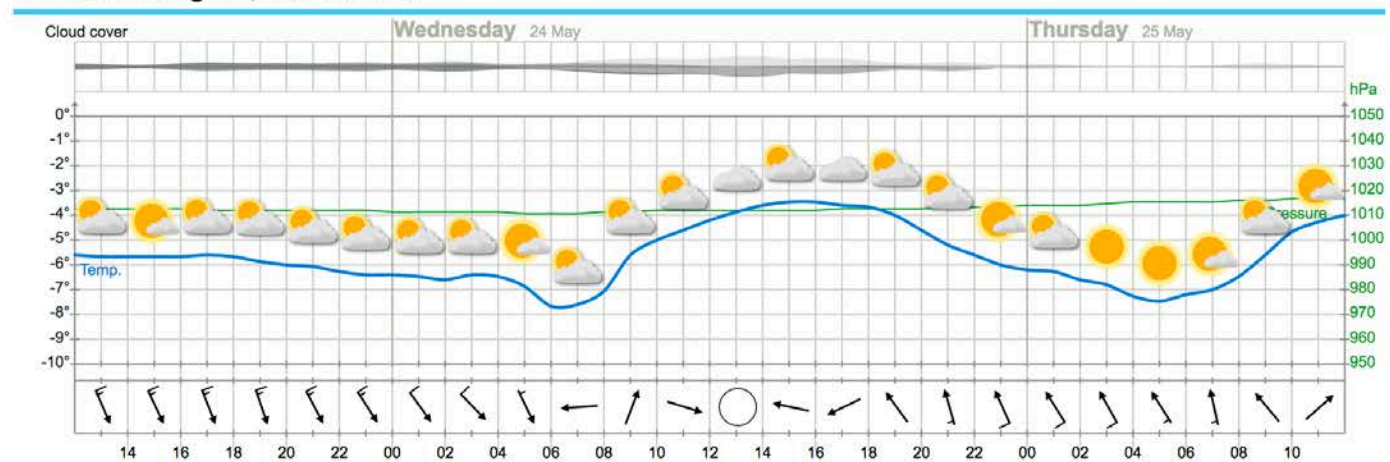
Lauf: 182



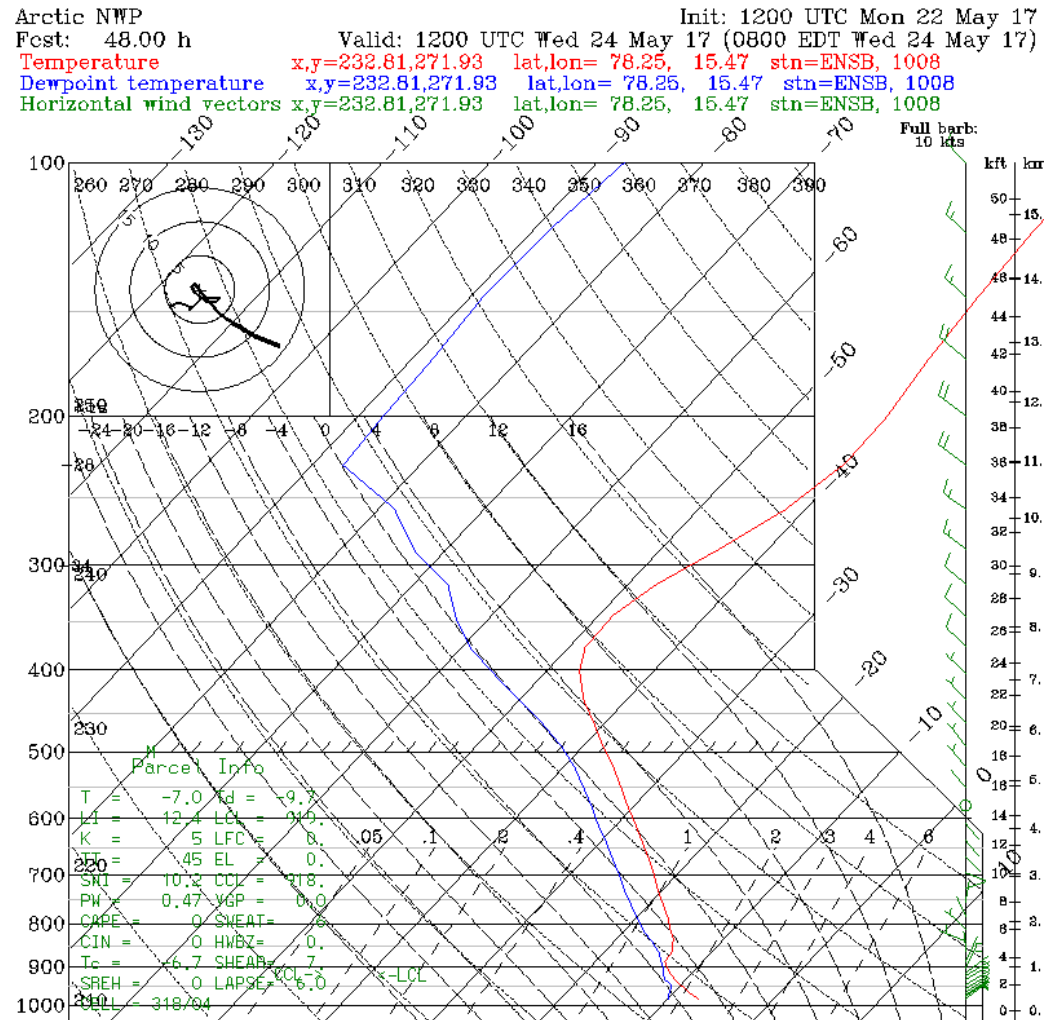
Heute kein Sonnenaufgang
Heute kein Sonnenuntergang

Outlook – Meteogram

YR.no



Sounding Longyearbyen 24 May 2017 @ 12 UTC



Precip. Water 23 May 2017

GFS 0.25°x0.25°
Daily Average

Precipitable Water
Tuesday, May 23, 2017

