

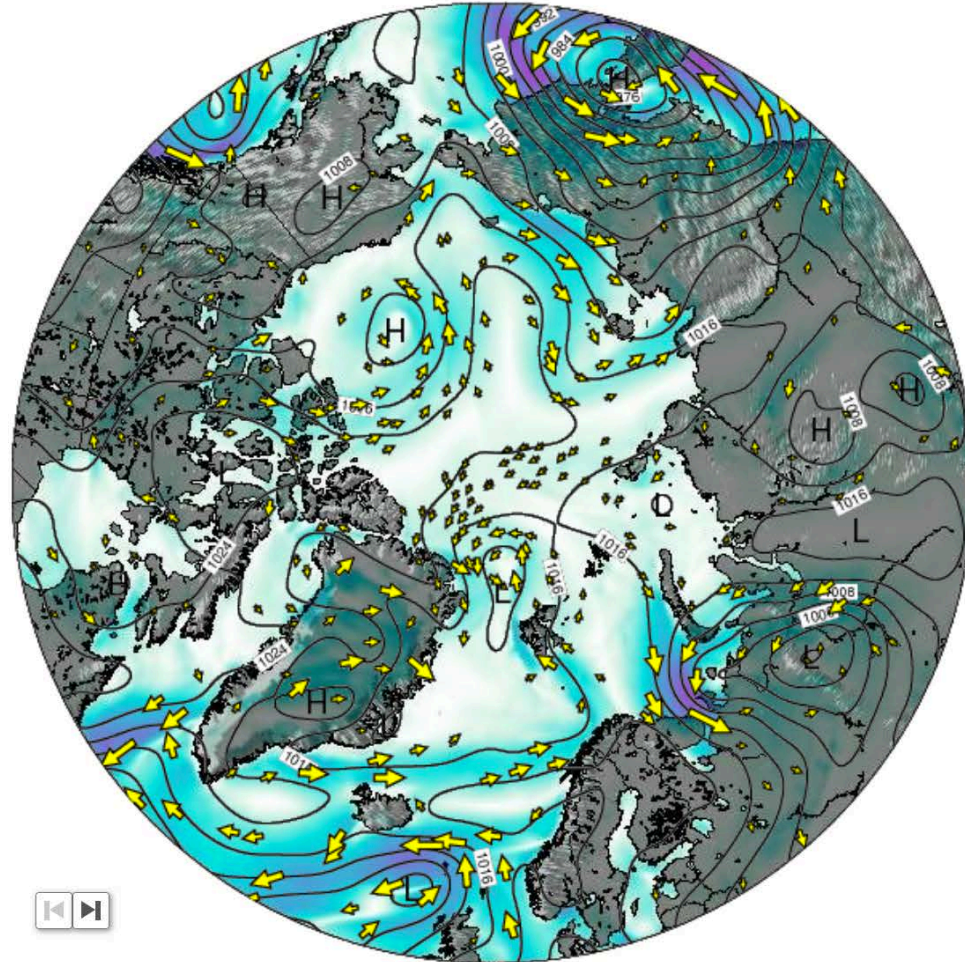
Weather briefing

ACLOUD Longyearbyen, Svalbard

Sun 21 May 2017 – **Mon 22 May** – Wed 24 May 2017

General Weather Situation 21 May 2017

Surface Wind on Sunday 21 May at 12am UTC

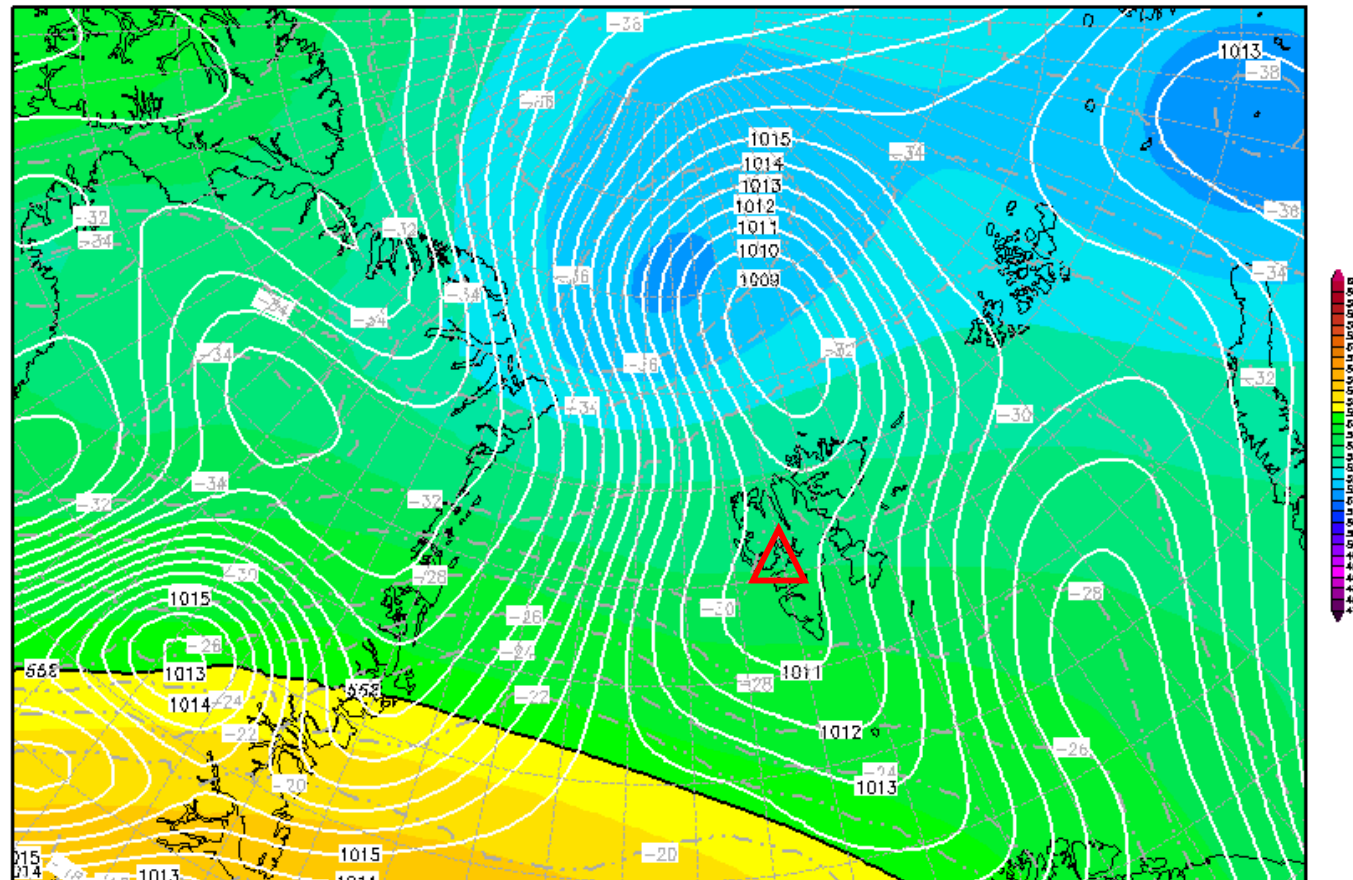


500-hPa Geopotential 21 May 2017 @ 12 UTC

Init : Sun,21MAY2017 00Z

Valid: Sun,21MAY2017 12Z

500 hPa Geopot.(gpdm), T (C) und Bodendr. (hPa)

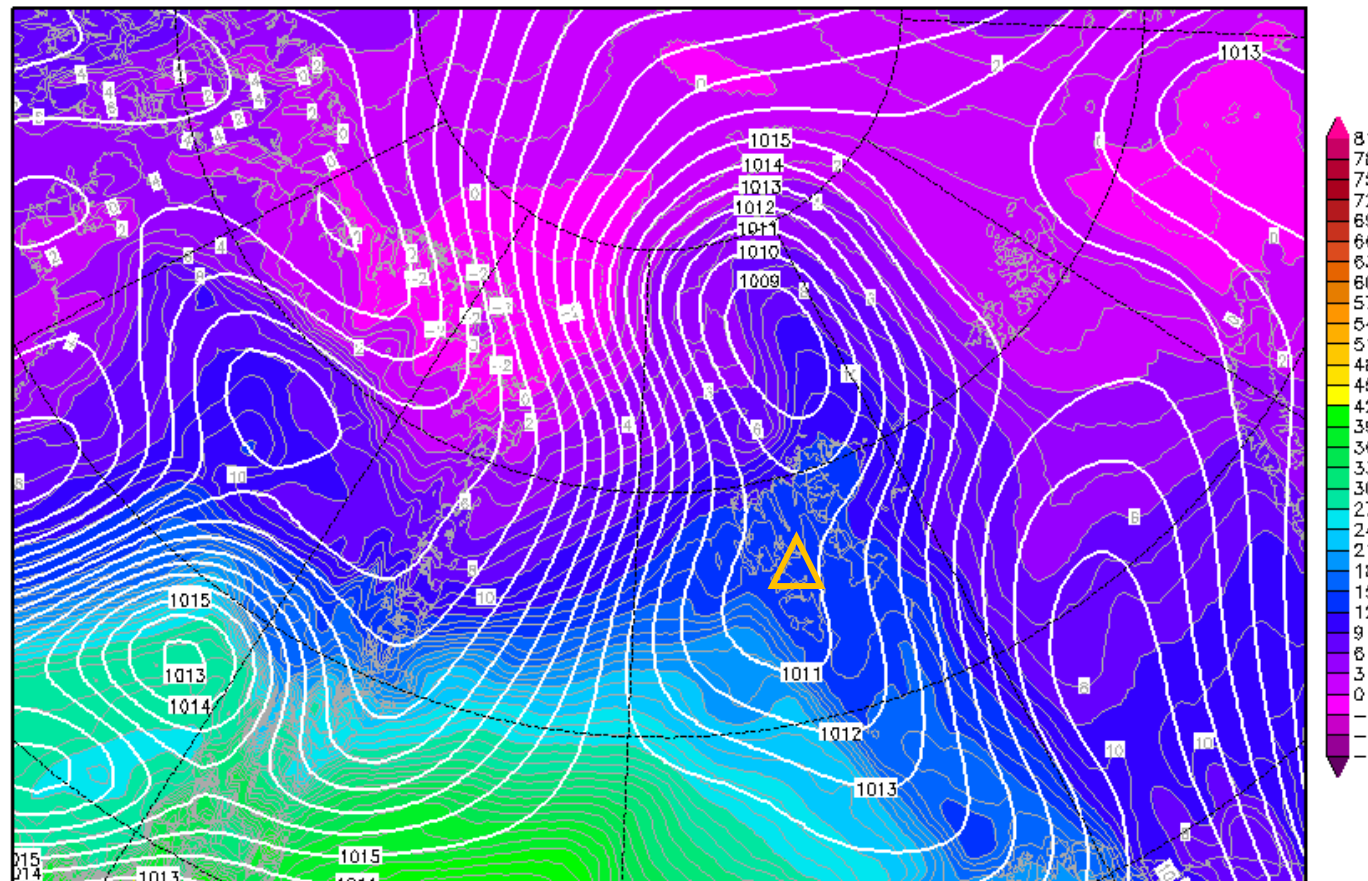


850-hPa Theta Equiv. 21 May 2017 @ 12 UTC

Init : Sun,21MAY2017 00Z

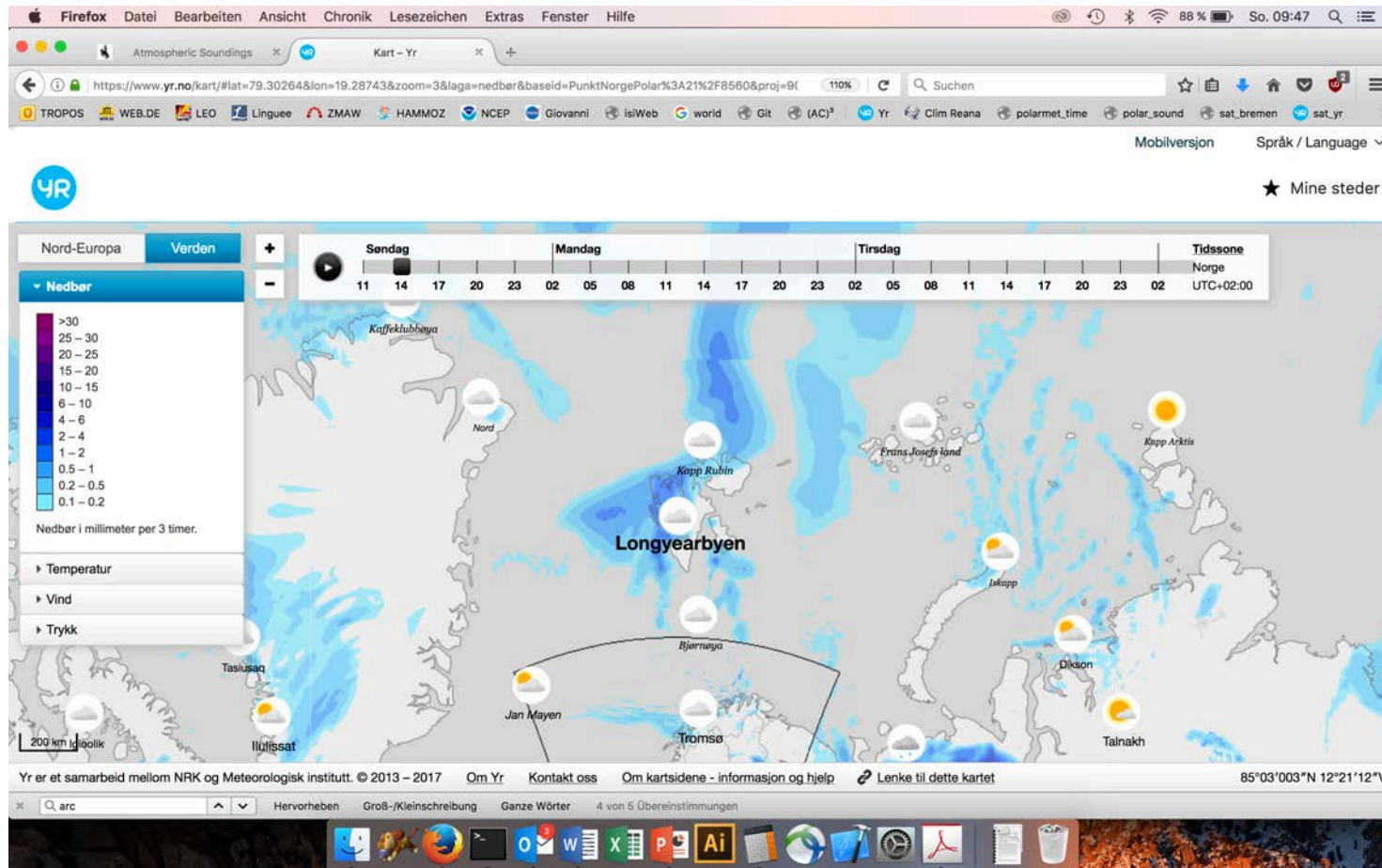
Valid: Sun,21MAY2017 12Z

Bodendruck (hPa) und 850 hPa Aeq.Pot.T. (Grad C)



Daten: GFS-Modell des amerikanischen Wetterdienstes
(C) Wetterzentrale
www.wetterzentrale.de

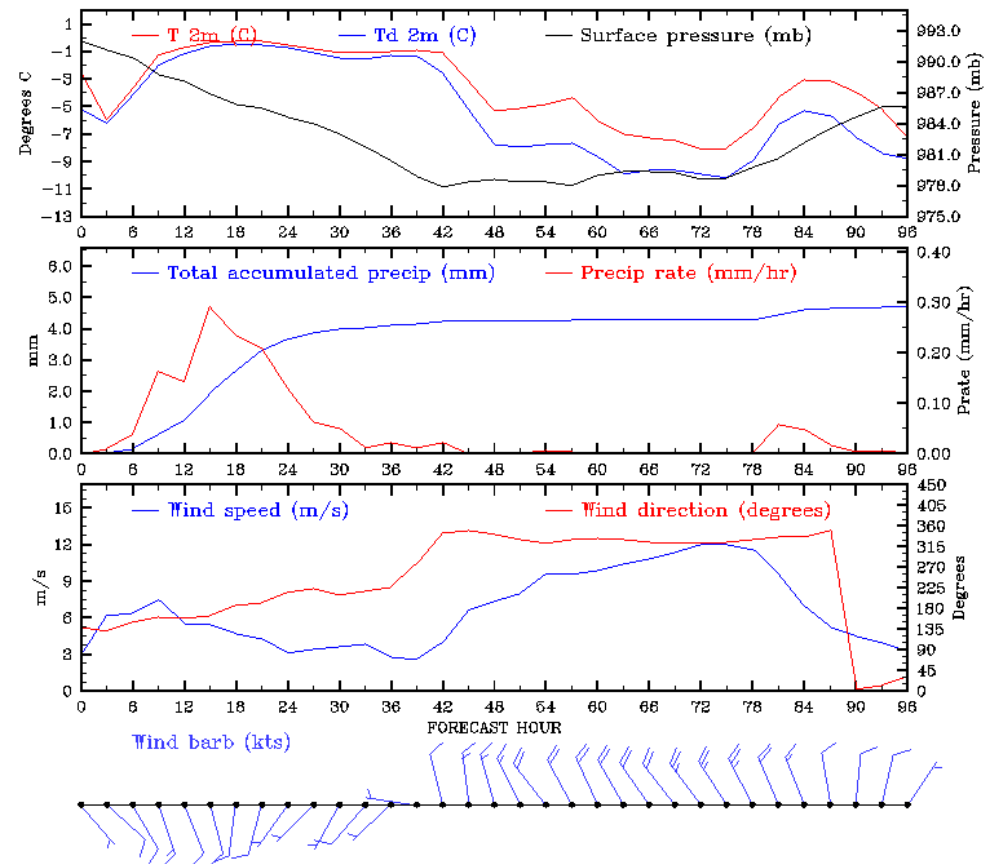
Precipitation 21 May 2017 12 UTC



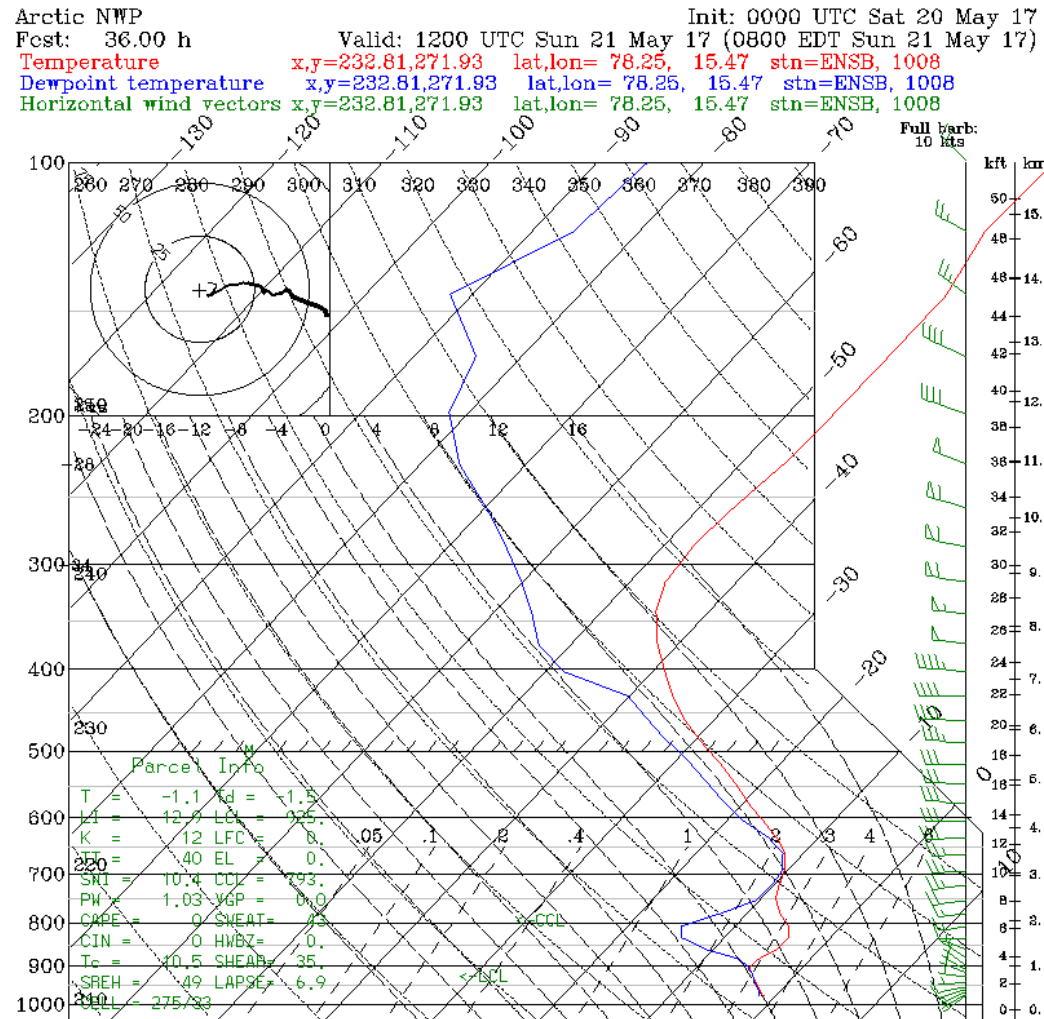
To be replaced by NMI plots during campaign

Outlook – Meteogram

2017052000 UTC Time Series Forecast for Svalbard, NOR



Sounding Longyearbyen 21 May 2017 @ 12 UTC

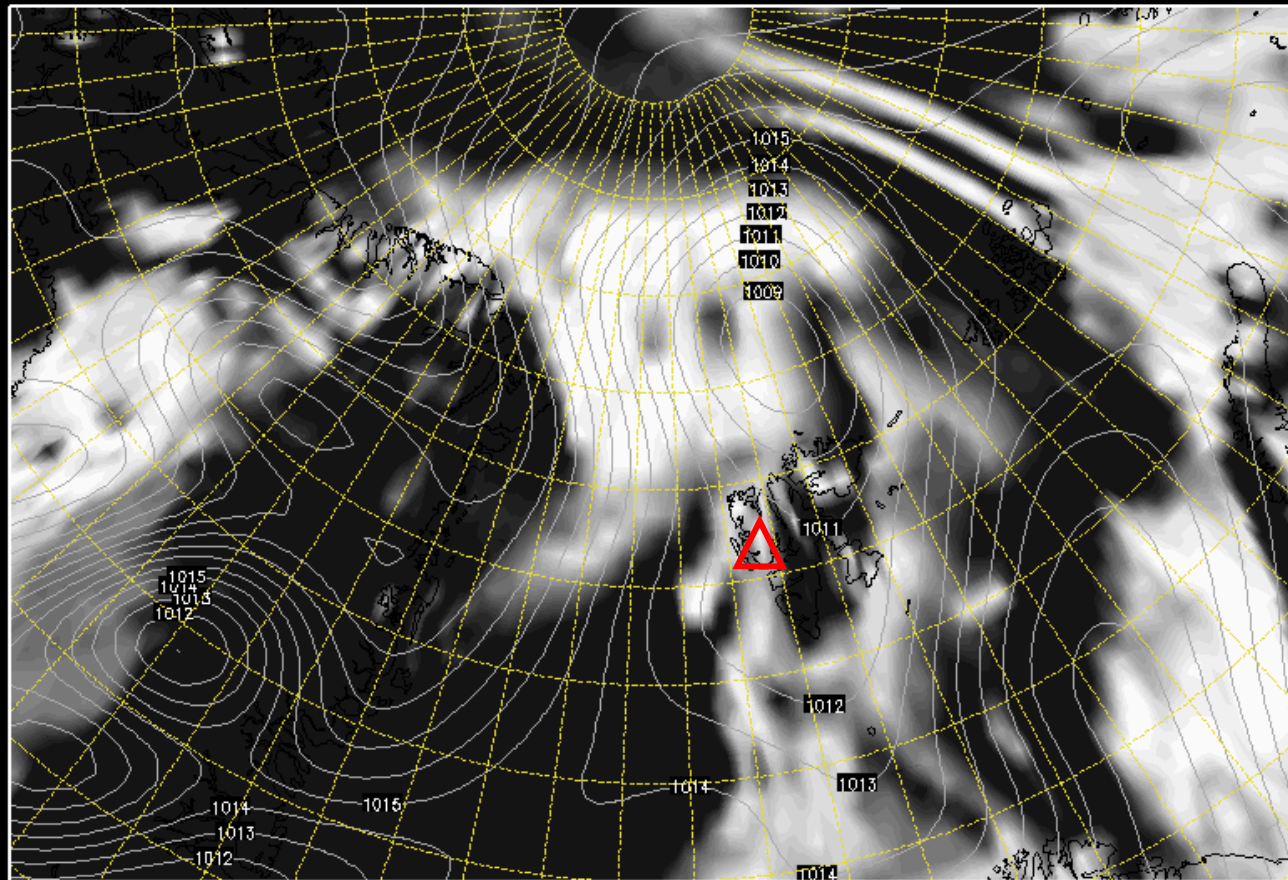


Low-level cloud cover 21 May 2017 @ 12 UTC

Init : Sat,20MAY2017 06Z

Valid: Sun,21MAY2017 12Z

Bodendruck, Tiefe Wolken und Grenzschicht-Wolken in %



Daten: GFS-Modell des amerikanischen Wetterdienstes

(C) W.

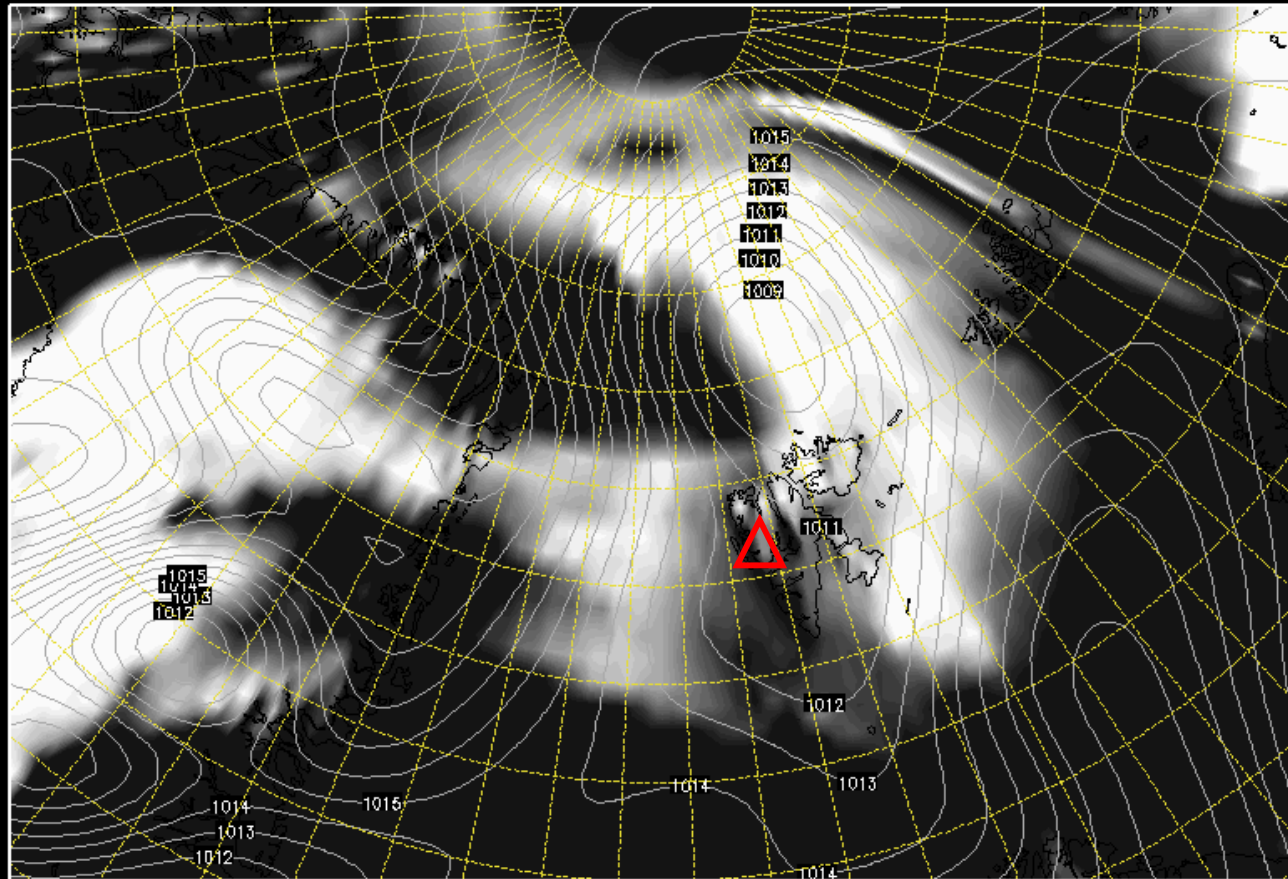
www.wetterzone.de 28 32 36 40 44 48 52 56 60 64 68 72 76 80 84 88 92 96 100

Mid-level cloud cover 21 May 2017 @ 12 UTC

Init : Sat,20MAY2017 06Z

Valid: Sun,21MAY2017 12Z

Bodendruck, Mittelhohe Wolken in %



Daten: GFS-Modell des amerikanischen Wetterdienstes

(C) W.

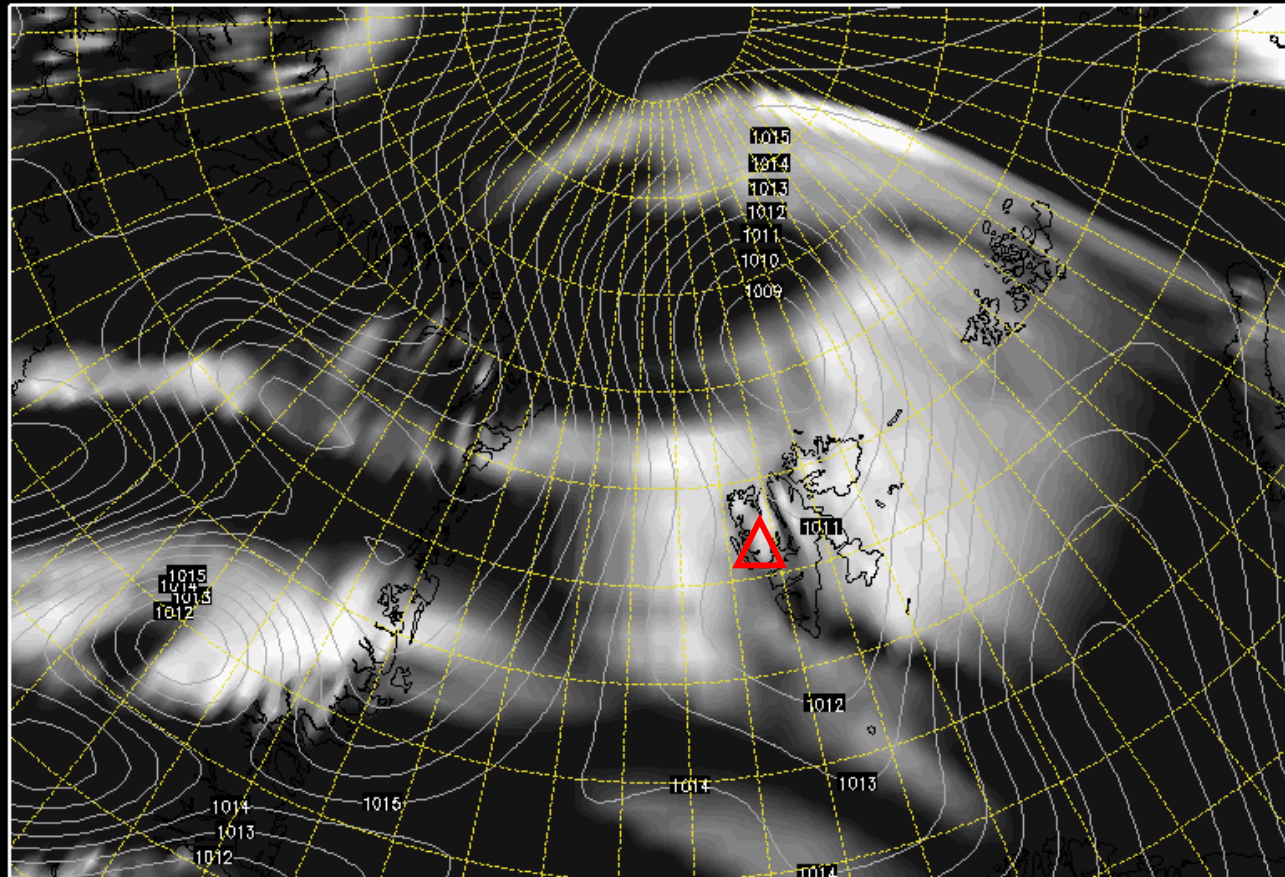
www.wetterzone.de 28 32 36 40 44 48 52 56 60 64 68 72 76 80 84 88 92 96 100

Mid-level cloud cover 21 May 2017 @ 12 UTC


Init : Sat,20MAY2017 06Z

Valid: Sun,21MAY2017 12Z

Bodendruck, Hohe Wolken in %

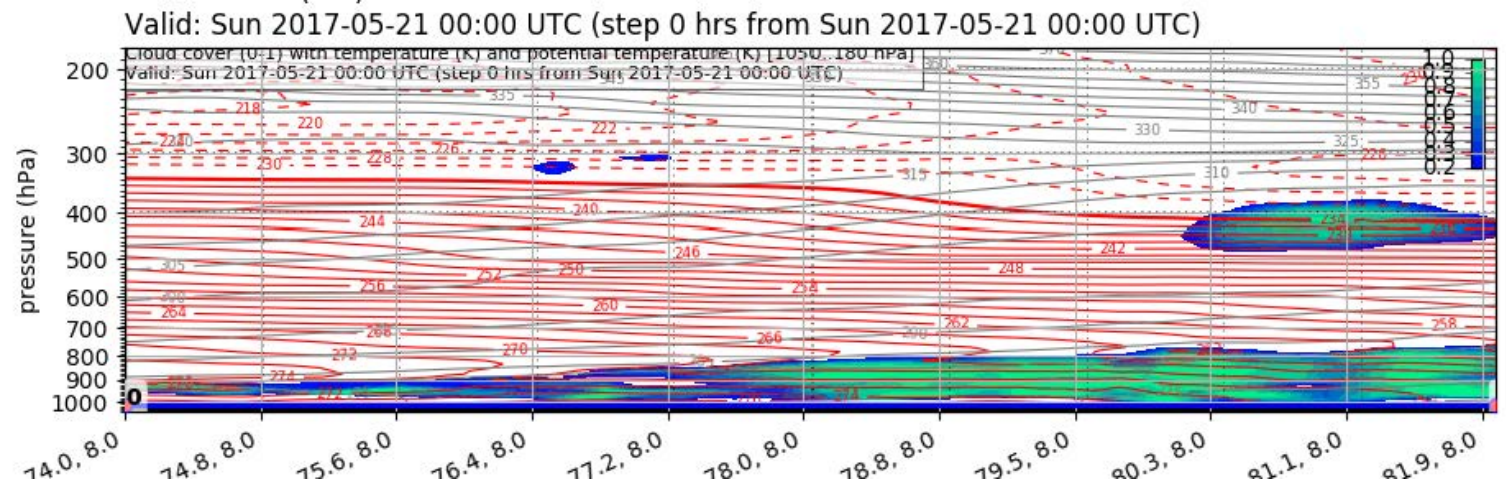
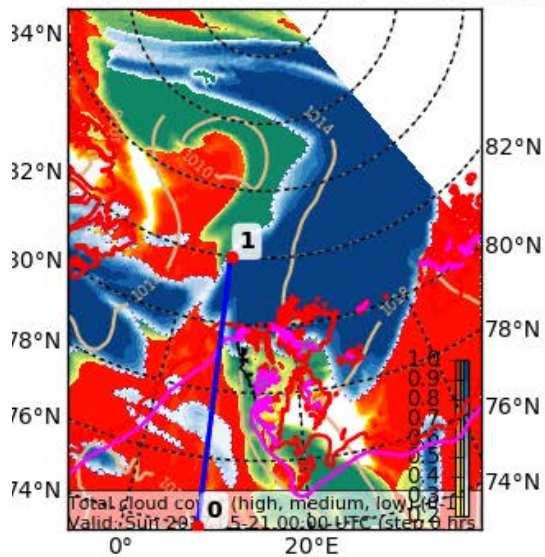


Daten: GFS-Modell des amerikanischen Wetterdienstes

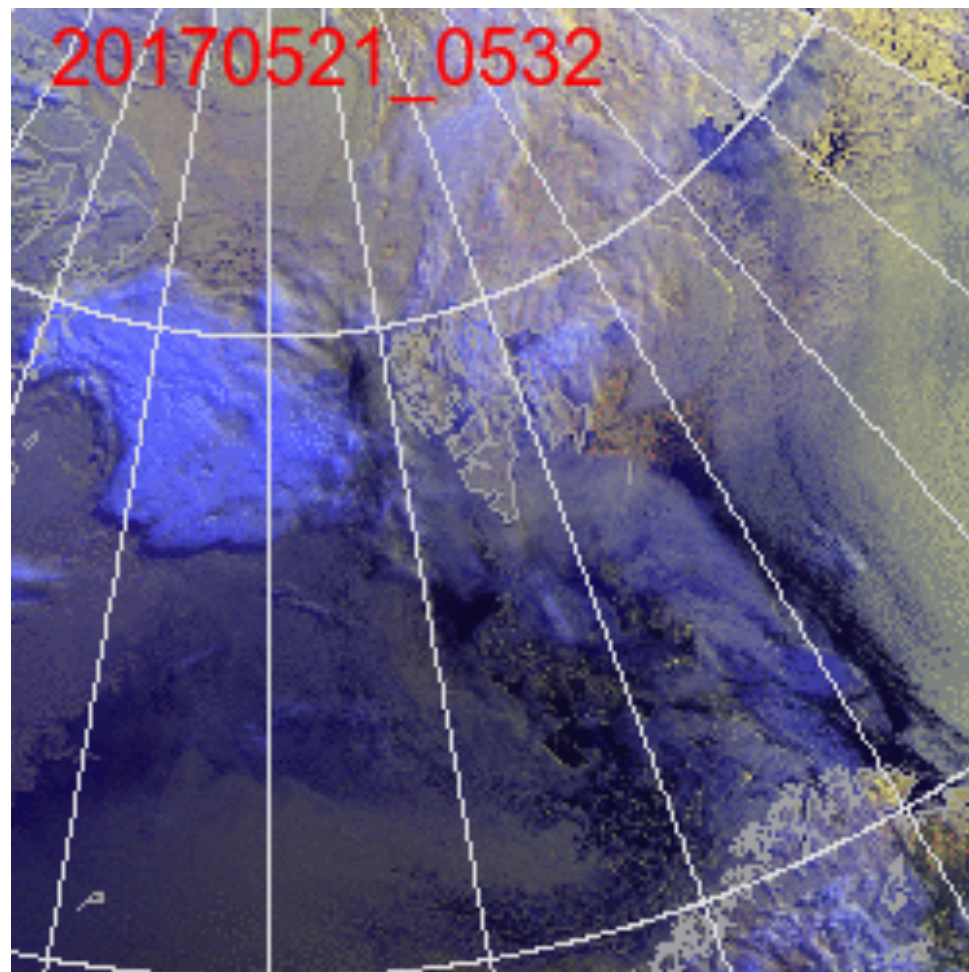
(C)  www.witten-labs.com/le2000/

Analysis Today 00 UTC

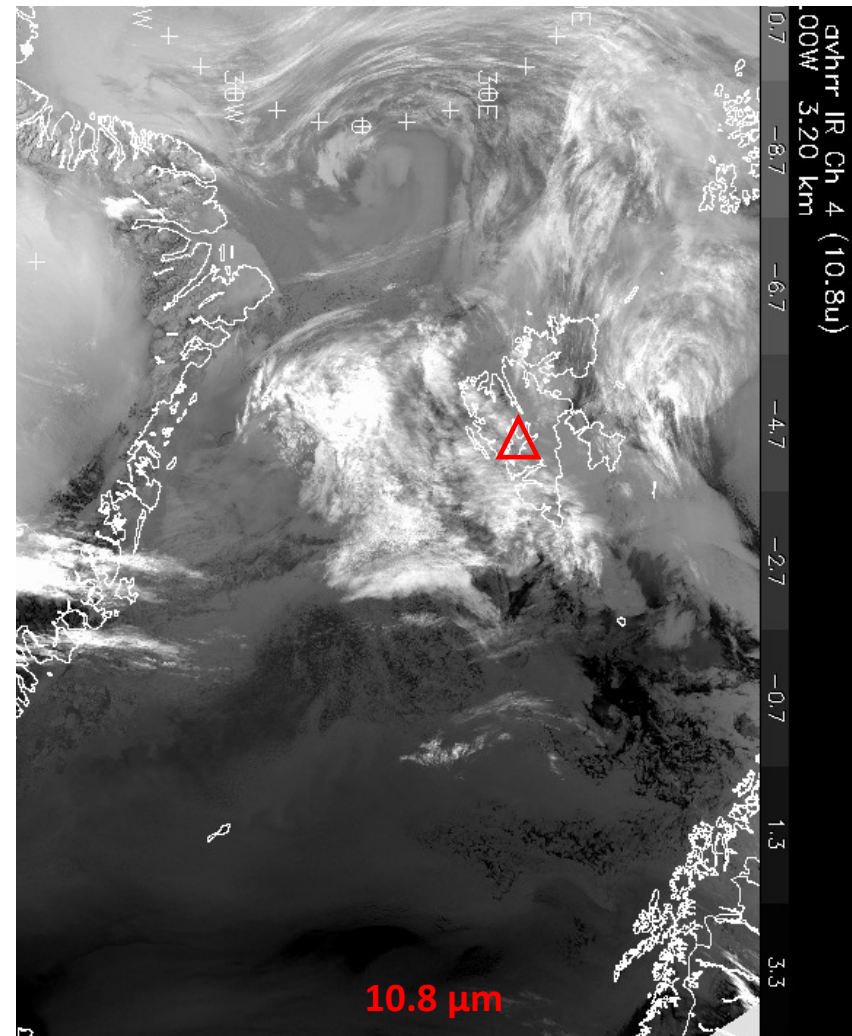
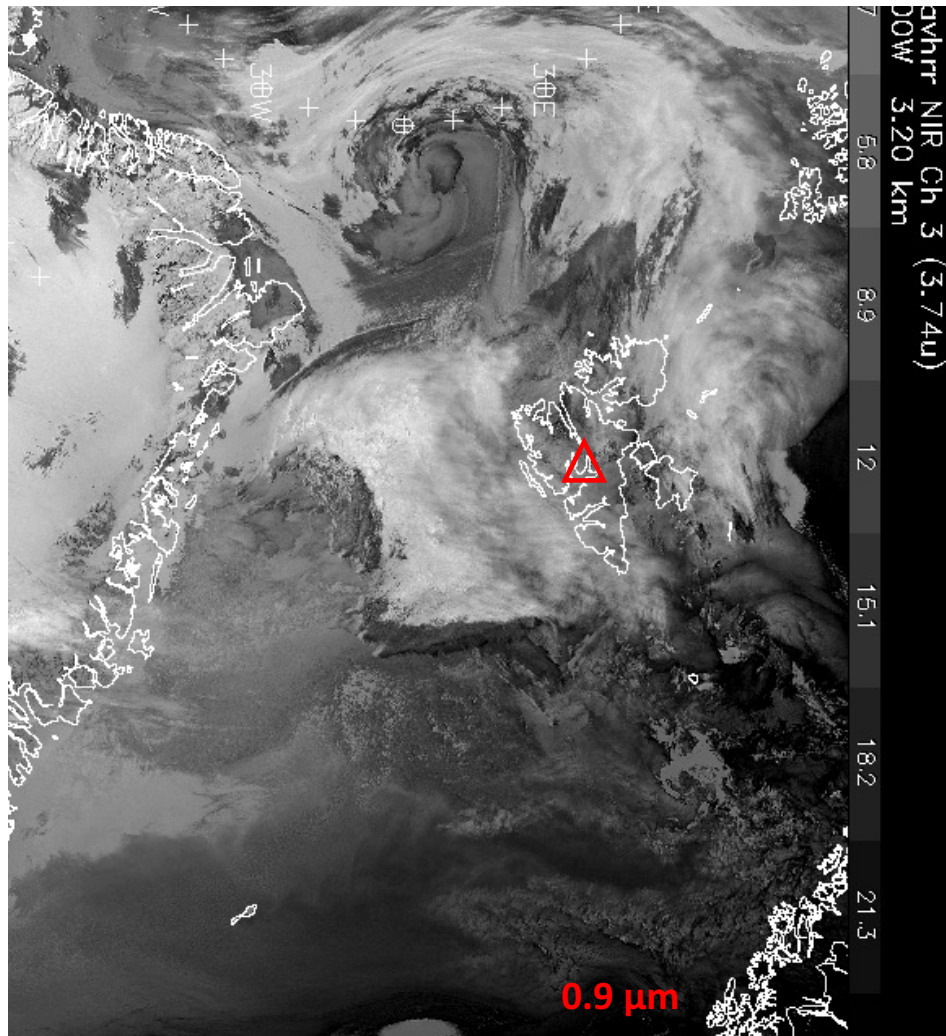
Cloud Cover (0-1) (Total Cloud Cover)
Valid: Sun 2017-05-21 00:00 UTC (step 0 hrs from Sun 2017-05-21 00:00 UTC)



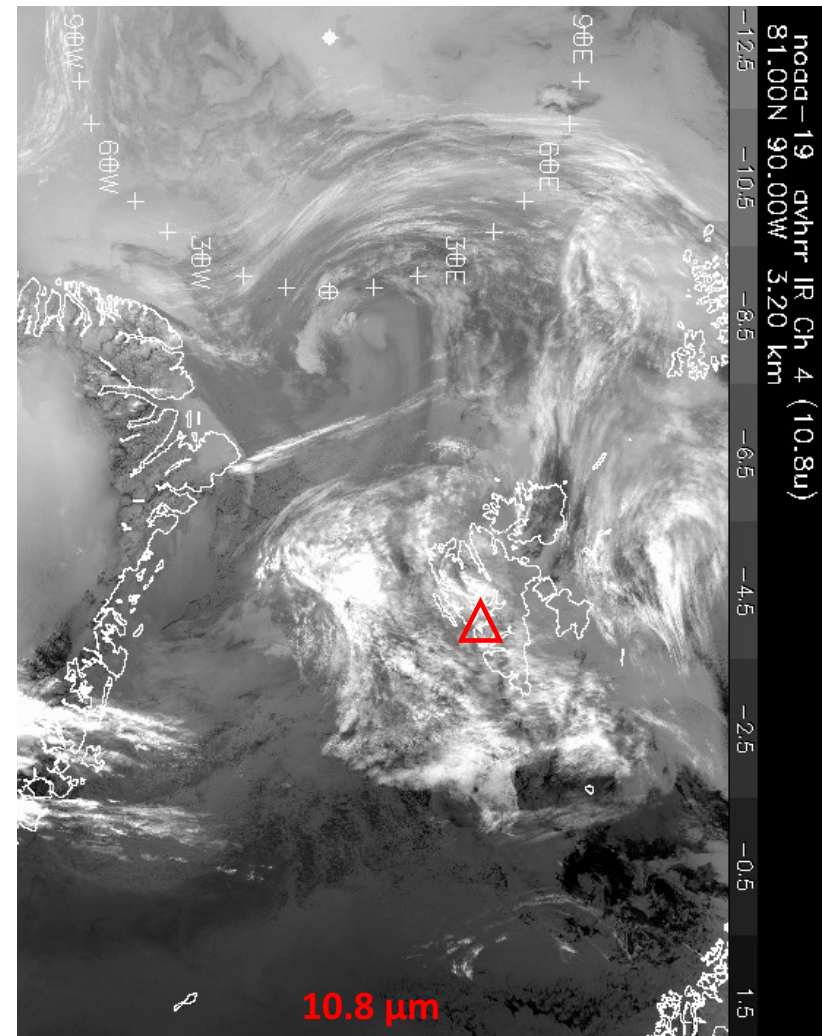
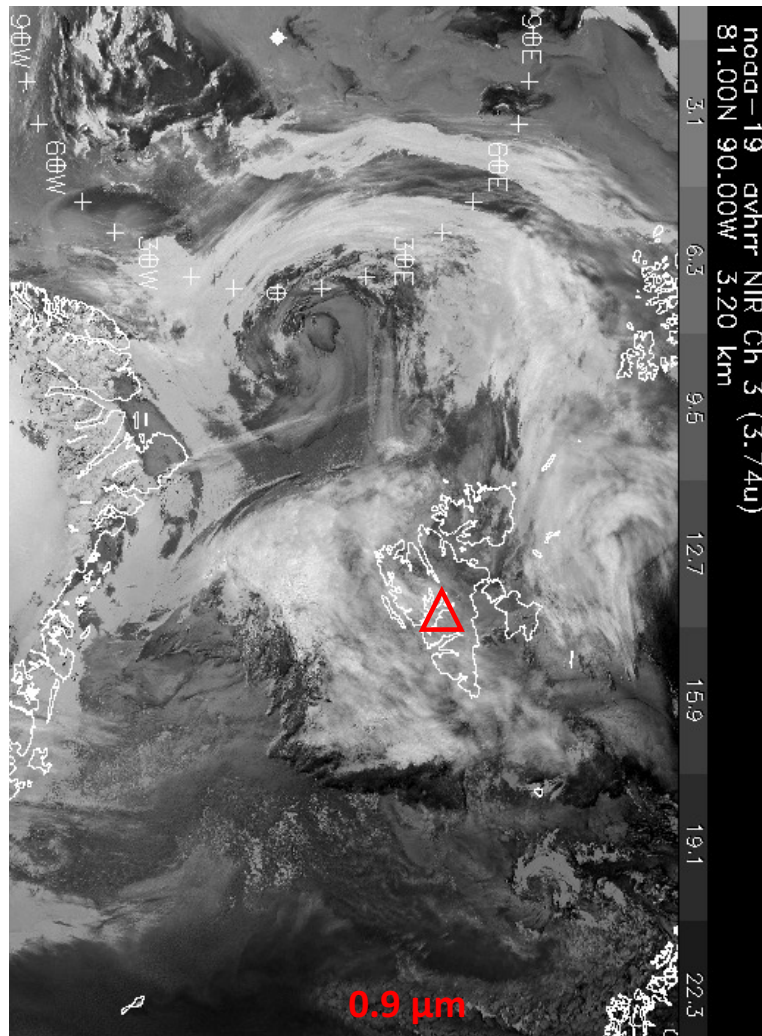
NOAA 21 May 2017 @ 0300-1200 UTC



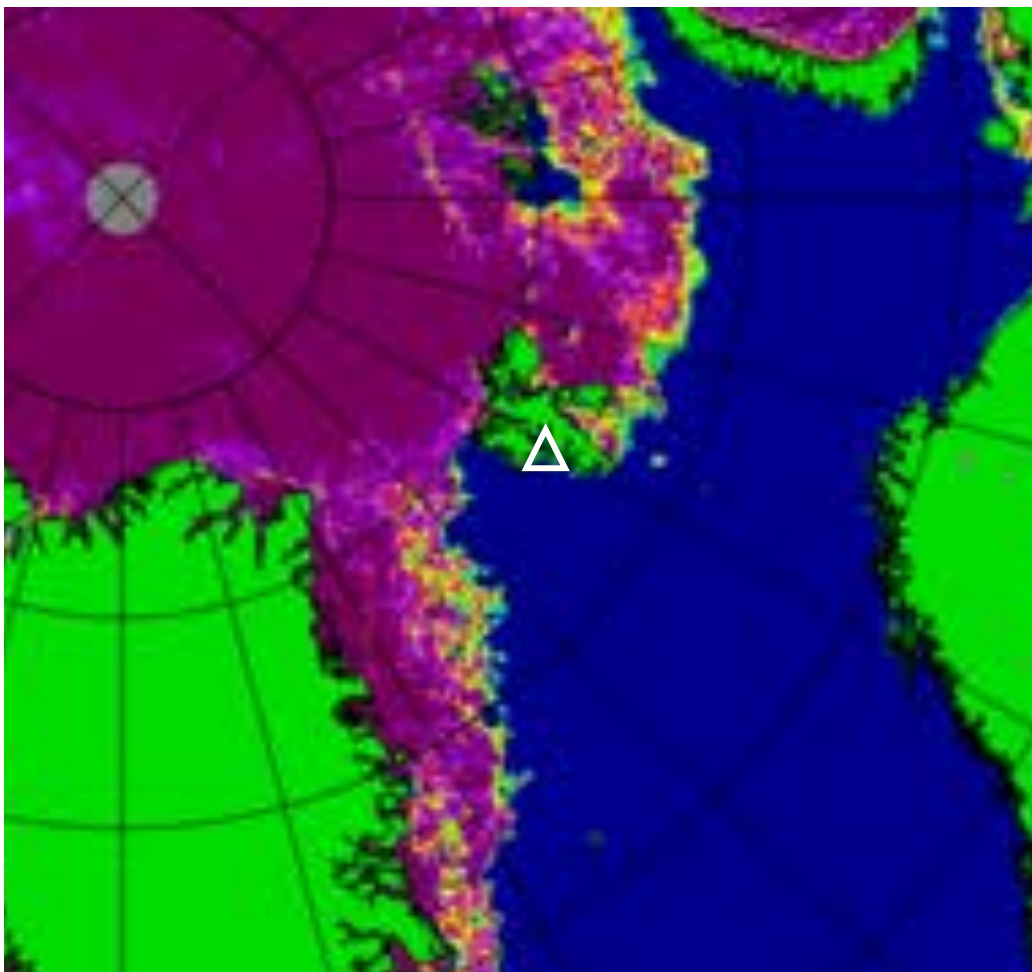
NOAA-19 21 May 2017 @ 0658 UTC



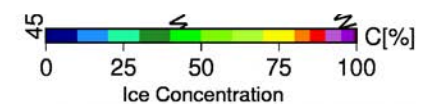
NOAA-19 21 May 2017 @ 0840 UTC



Arctic sea ice 20 May 2017



May 20 2017 60
Arctic
ASI (from AMSR2) ver. 5.3, Grid 6.25 km



Flight Day

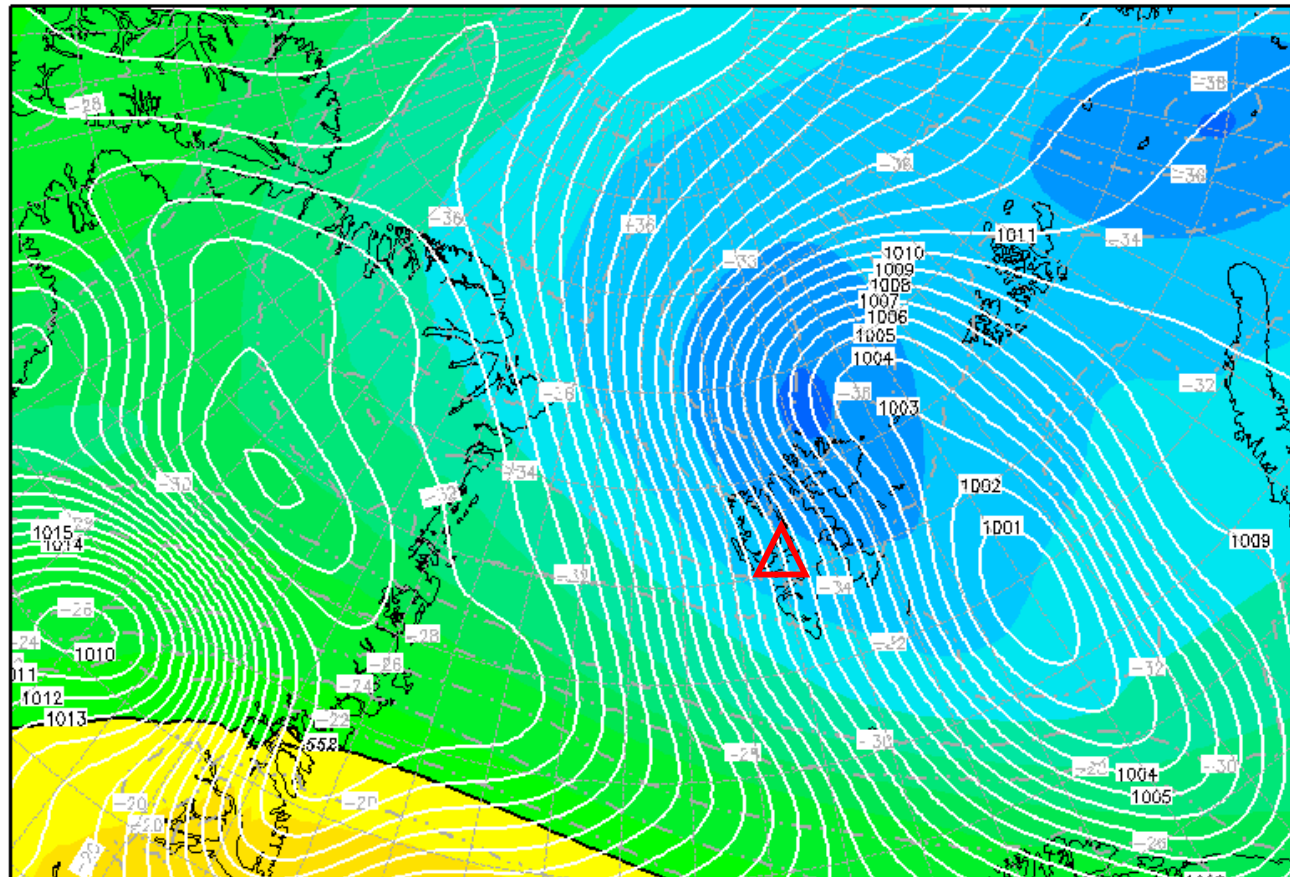
Mon 22 May 2017

500-hPa Geopotential 22 May 2017 @ 12 UTC

Init : Sun,21MAY2017 00Z

Valid: Mon,22MAY2017 12Z

500 hPa Geopot.(gpdm), T (C) und Bodendr. (hPa)

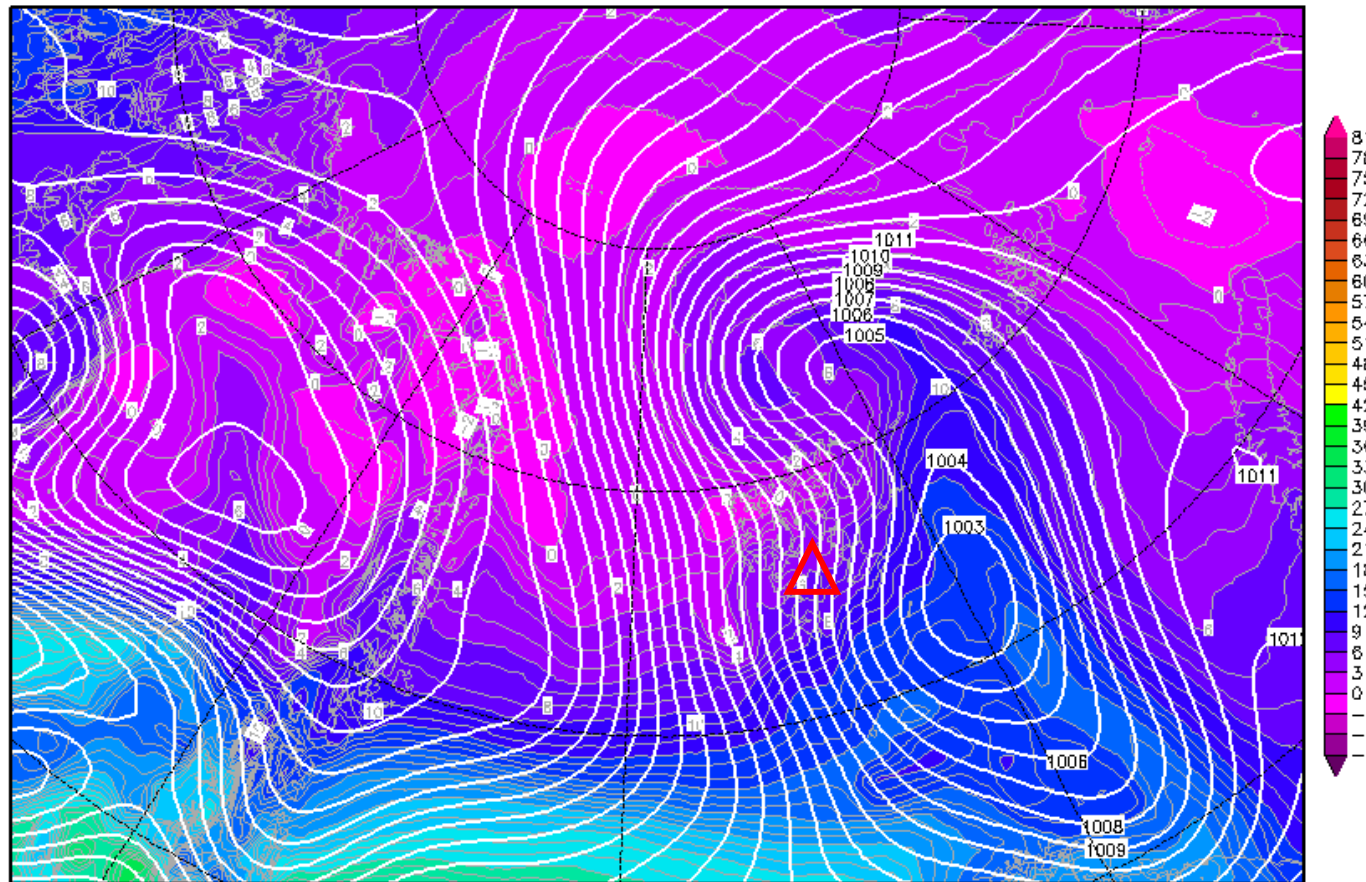


850-hPa Theta Equiv. 22 May 2017 @ 06 UTC

Init : Sun,21MAY2017 00Z

Valid: Mon,22MAY2017 06Z

Bodendruck (hPa) und 850 hPa Aeq.Pot.T. (Grad C)

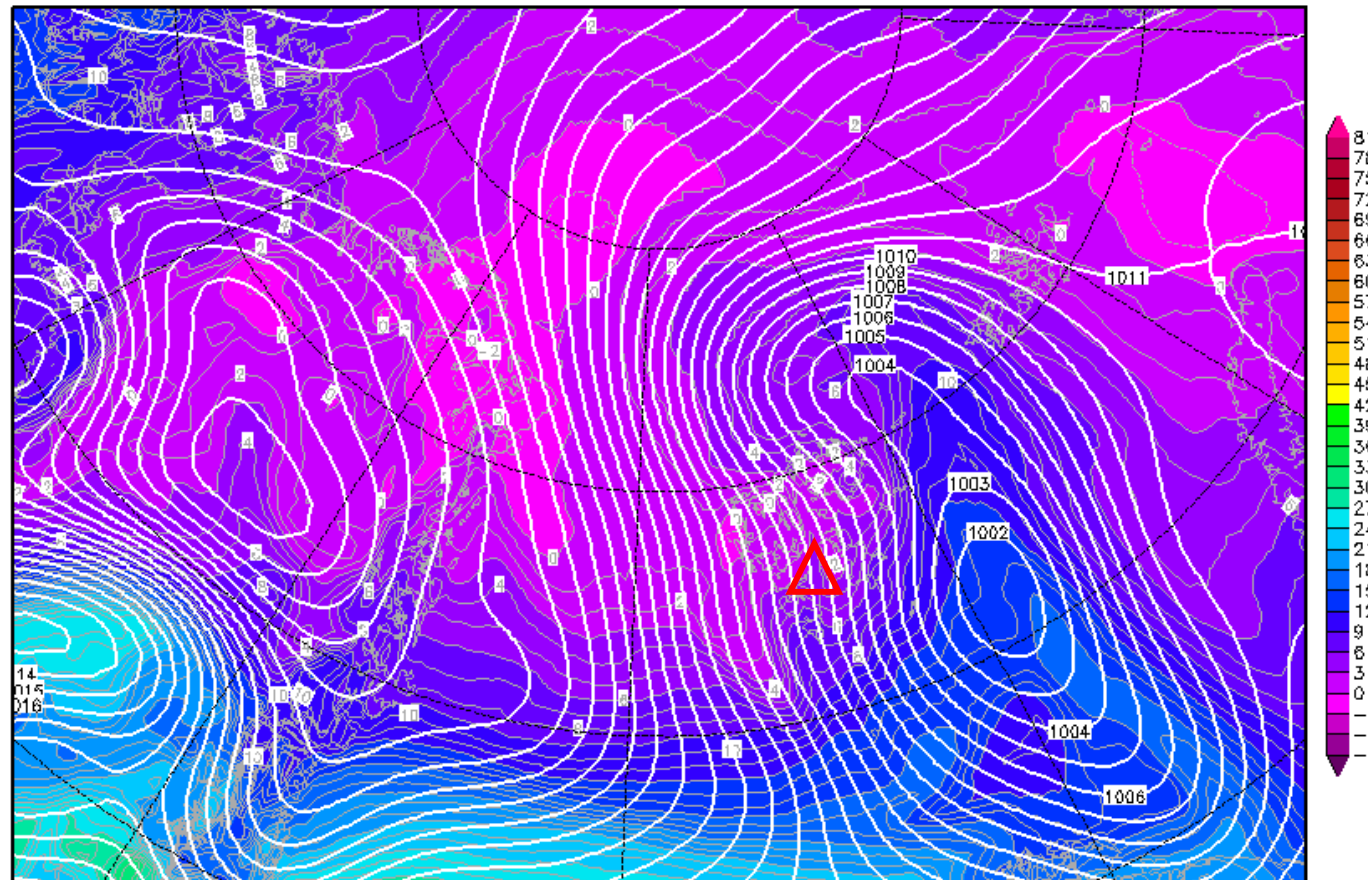


850-hPa Theta Equiv. 22 May 2017 @ 09 UTC

Init : Sun,21MAY2017 00Z

Valid: Mon,22MAY2017 09Z

Bodendruck (hPa) und 850 hPa Aeq.Pot.T. (Grad C)



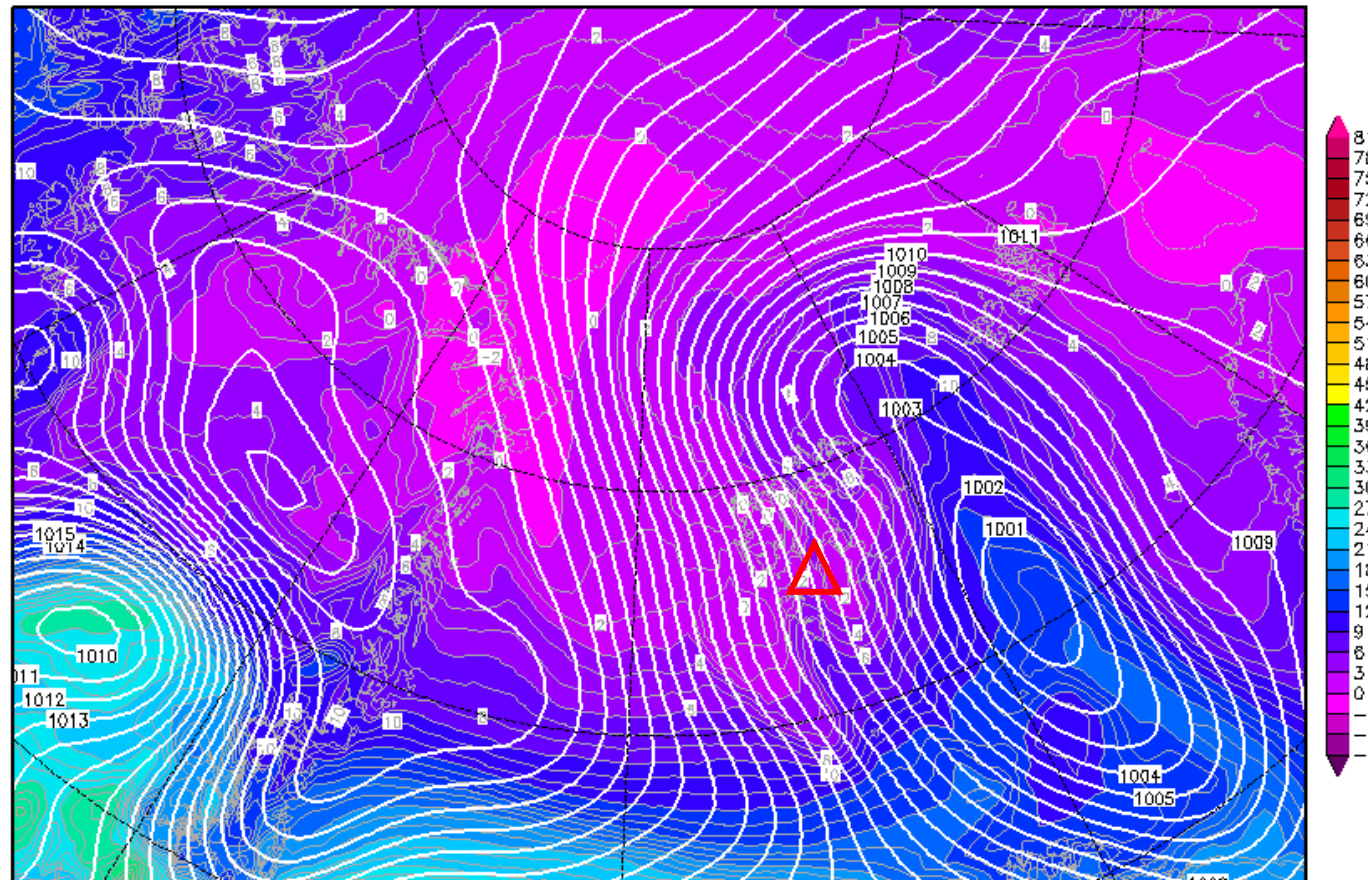
Daten: GFS-Modell des amerikanischen Wetterdienstes
(C) Wetterzentrale
www.wetterzentrale.de

850-hPa Theta Equiv. 22 May 2017 @ 12 UTC

Init : Sun,21MAY2017 00Z

Valid: Mon,22MAY2017 12Z

Bodendruck (hPa) und 850 hPa Aeq.Pot.T. (Grad C)



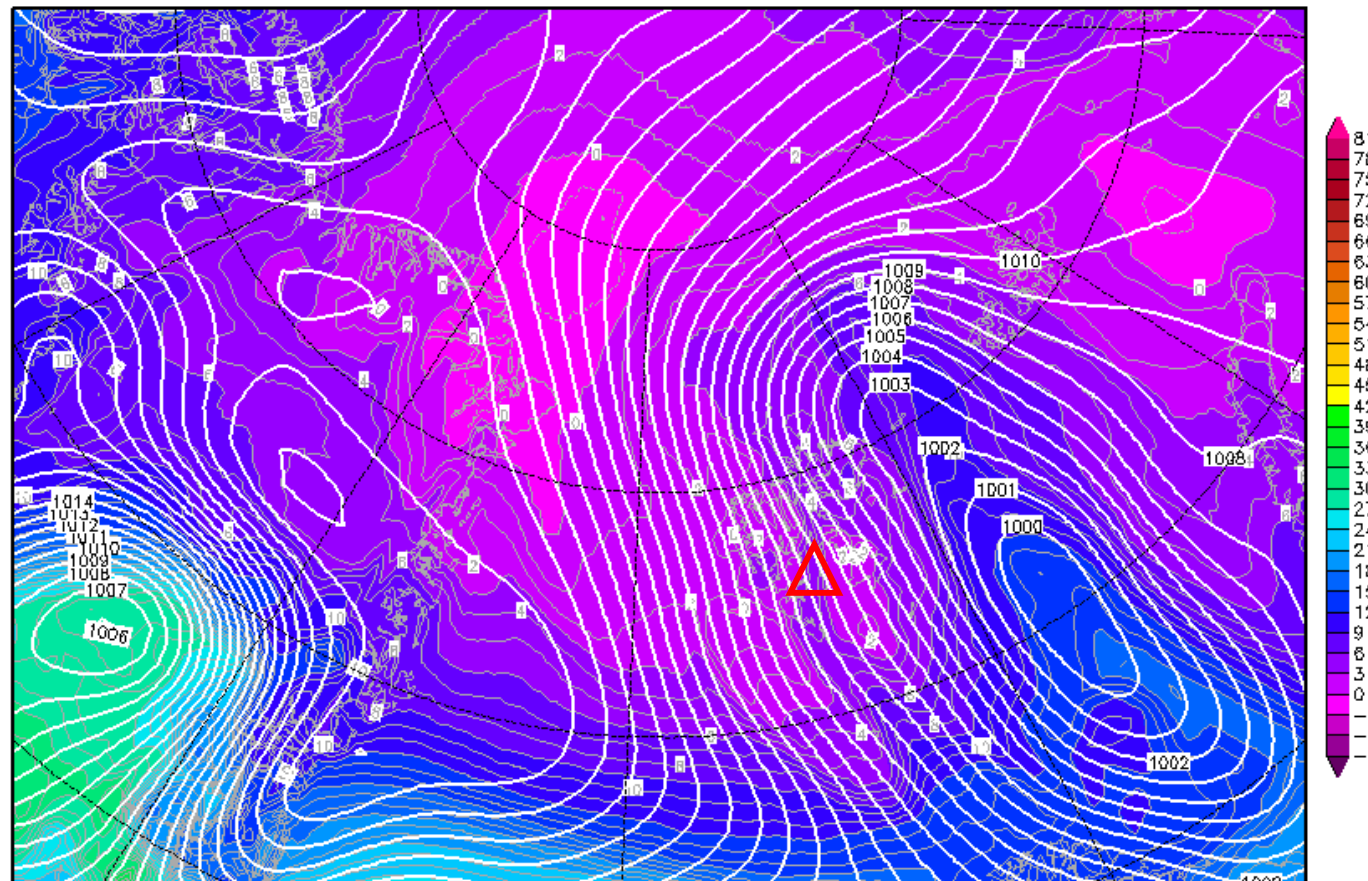
Daten: GFS-Modell des amerikanischen Wetterdienstes
(C) Wetterzentrale
www.wetterzentrale.de

850-hPa Theta Equiv. 22 May 2017 @ 15 UTC

Init : Sun,21MAY2017 00Z

Valid: Mon,22MAY2017 15Z

Bodendruck (hPa) und 850 hPa Aeq.Pot.T. (Grad C)

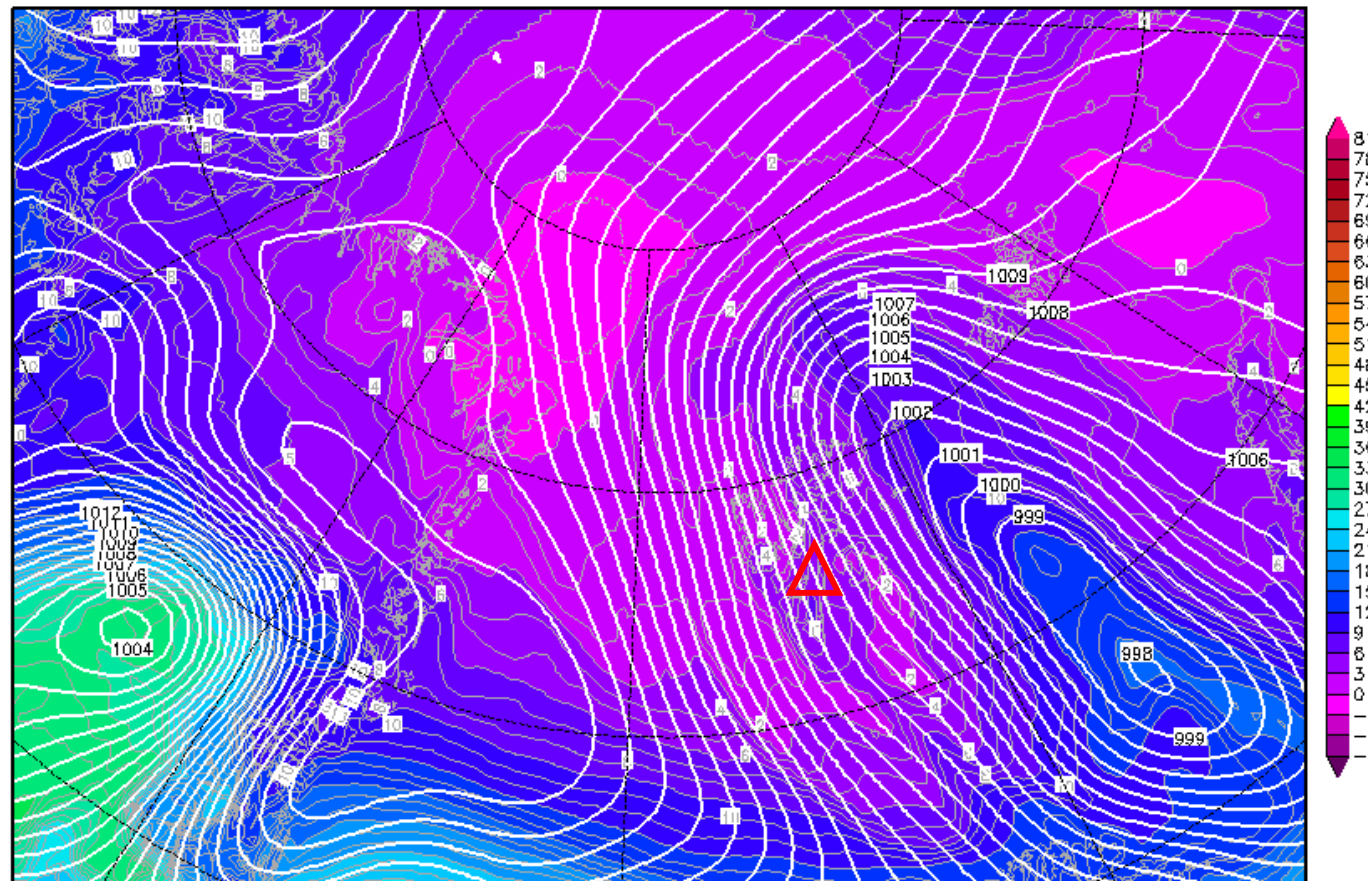


850-hPa Theta Equiv. 22 May 2017 @ 18 UTC

Init : Sun,21MAY2017 00Z

Valid: Mon,22MAY2017 18Z

Bodendruck (hPa) und 850 hPa Aeq.Pot.T. (Grad C)



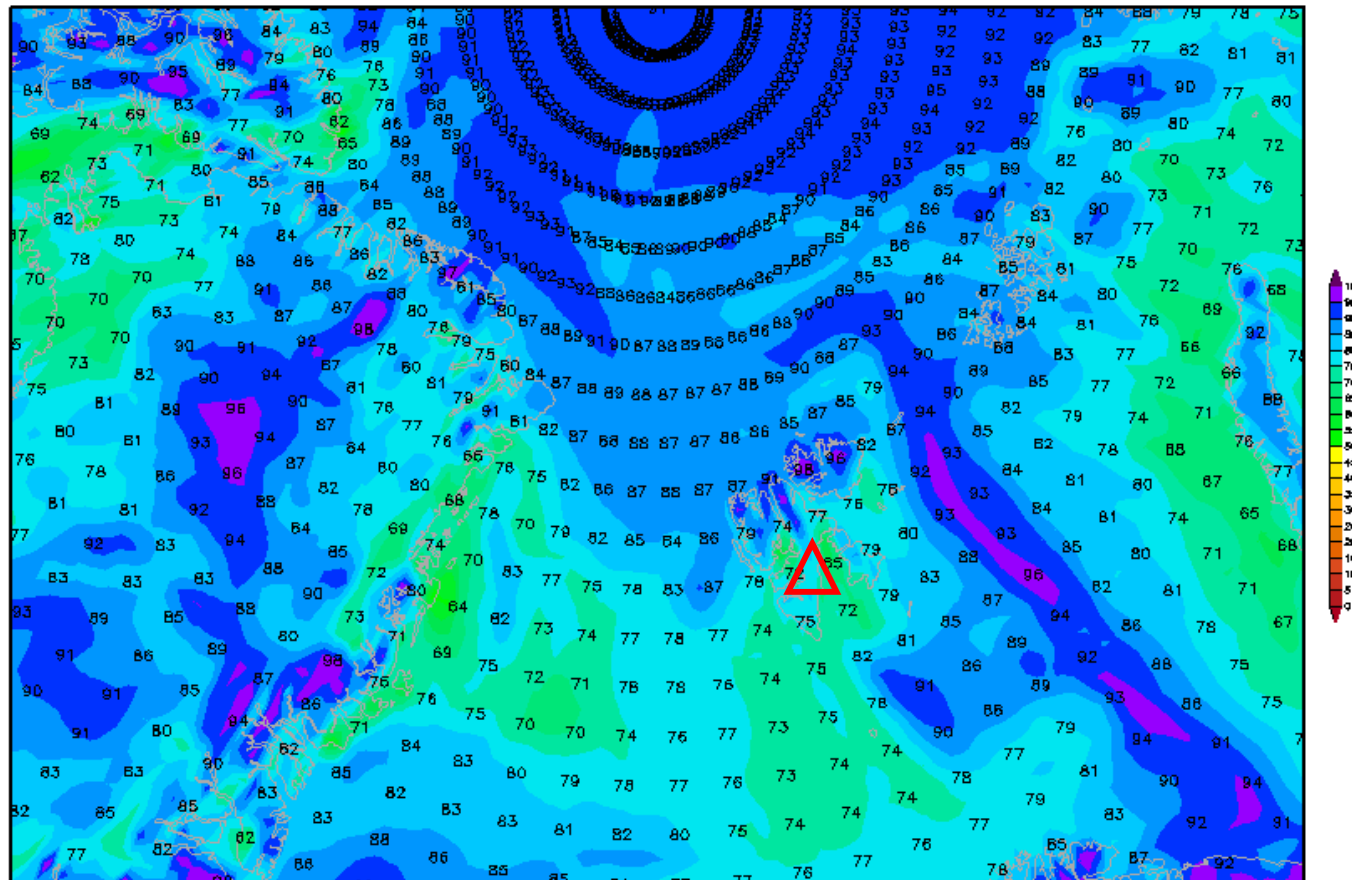
Daten: GFS—Modell des amerikanischen Wetterdienstes
(C) Wetterzentrale
www.wetterzentrale.de

2-m Rel. hum. 22 May 2017 @ 12 UTC

Init : Sun,21MAY2017 00Z

Valid: Mon,22MAY2017 12Z

2m Rel. Feuchte in %

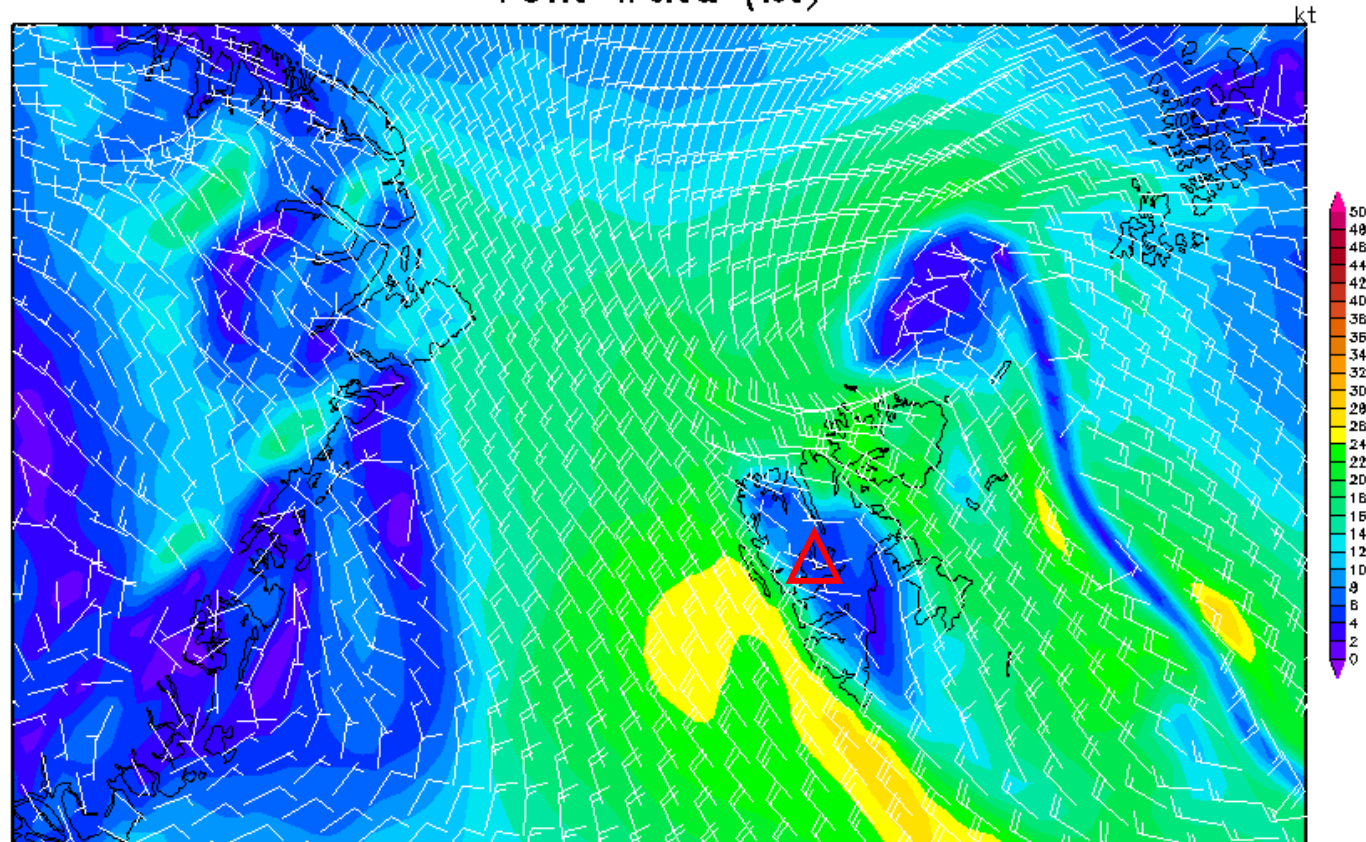


10-m Wind 22 May 2017 @ 12 UTC

Init : Sun,21MAY2017 00Z

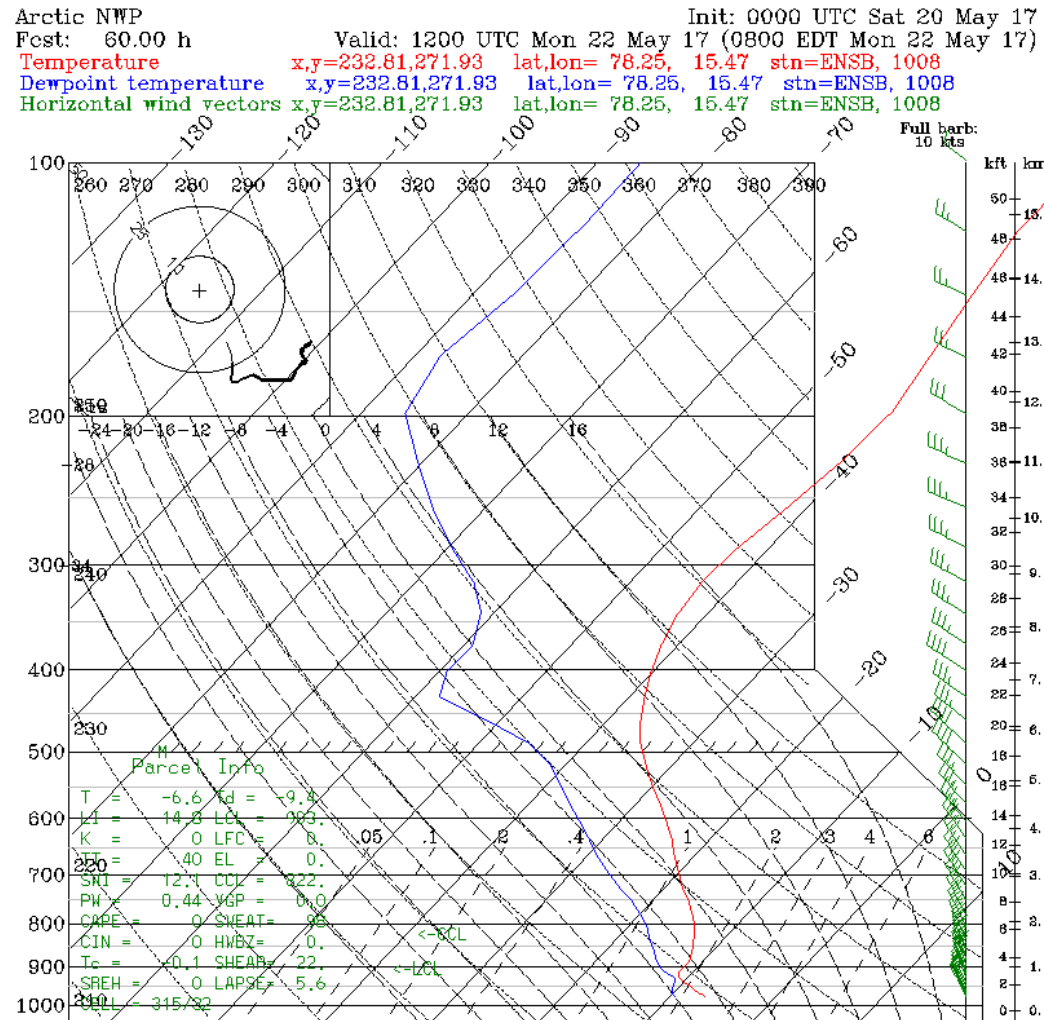
Valid: Mon,22MAY2017 12Z

10m Wind (kt)



Daten: GFS—Modell des amerikanischen Wetterdienstes
(C) Wetterzentrale
www.wetterzentrale.de

Sounding Longyearbyen 22 May 2017 @ 12 UTC



Weather in a nut shell – 22 May 2017

Firefox | Datei | Bearbeiten | Ansicht | Chronik | Lesezeichen | Extras | Fenster | Hilfe

Wetter : Wetterzentrale : Top | METAR TAF : Svalbard Airpor | Kart - Yr

en.allmetsat.com/metar-taf/europe.php?icao=ENSB

TROPOS | WEB.DE | LEO | Linguee | ZMAW | HAMMOZ | NCEP | Giovanni | isiWeb | world | Git | (AC)³ | Yr | Clim Reana | polarimet_time | polar_sound | sat_bremen | sat_yr

Satellite images | 10-day forecasts | Climate | Marine weather | Cyclones | Lightning | Airports | FAQ | Languages | Contact | Newsletter | About

METAR-TAF: Europe | Africa | North America | South America | Asia | Australia-Oceania | Others

METAR-TAF

Google Custom Search | Search

Airports : Longyearbyen | Europe

Longyearbyen, Norway

Svalbard Airport
latitude: 78-15N, longitude: 015-28E,
elevation: 2 m

Current weather observation

The report was made 1 hour and 7 minutes ago, at 08:50 UTC

Wind 4 kt from the West/Northwest

Temperature 1°C

Humidity 86%

Pressure 1012 hPa

Visibility 10 km or more

Few clouds at a height of 2300 ft
Broken clouds at a height of 4700 ft

[Change units](#)

METAR: ENSB 210850Z 29004KT 9999 FEW023 BKN047 01/M01 Q1012 RMK WIND 1400FT VRB02KT

Time: 11:57 (09:57 UTC)

Forecast

Forecast valid from 21 at 06 UTC to 22 at 06 UTC

Wind 8 kt from the West

Visibility 10 km or more

Few clouds at a height of 1500 ft
Broken clouds at a height of 3500 ft

Temporary
from 21 at 12 UTC to 21 at 24 UTC

Visibility: 4000 m
at a height of 800 ft

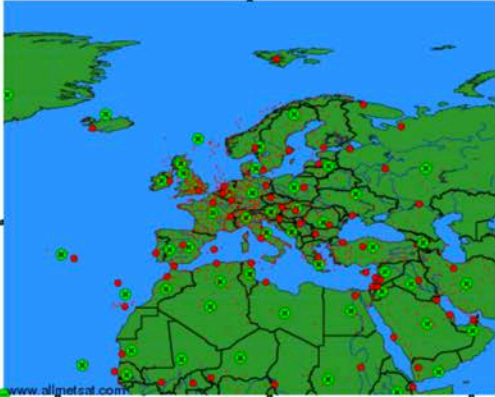
light snow, rain

Becoming
from 21 at 18 UTC to 21 at 21 UTC

Wind 15 kt from the North/Northeast

TAF: ENSB 2106/2206 26008KT 9999 FEW015 BKN035 TEMPO 2112/2124 4000 -SNRA VV008 BECMG 2118/2121 03015KT

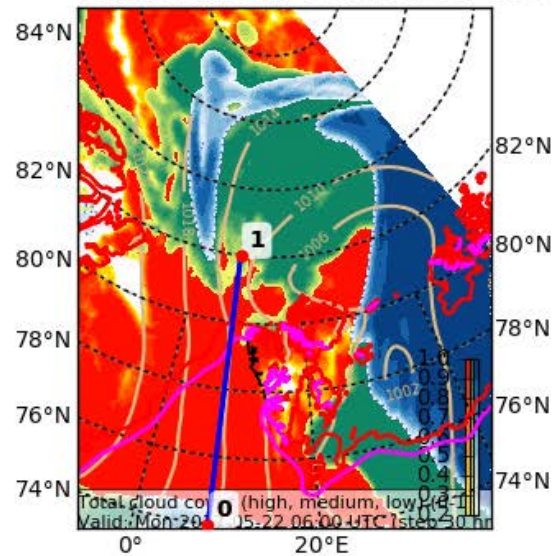
Weather observations and forecasts of more than 4000 airports (METAR and TAF reports).
The available stations are represented by yellow and red dots on the map.
Hover mouse over dot to see the name of the station.
Then click to see weather observations and forecasts.



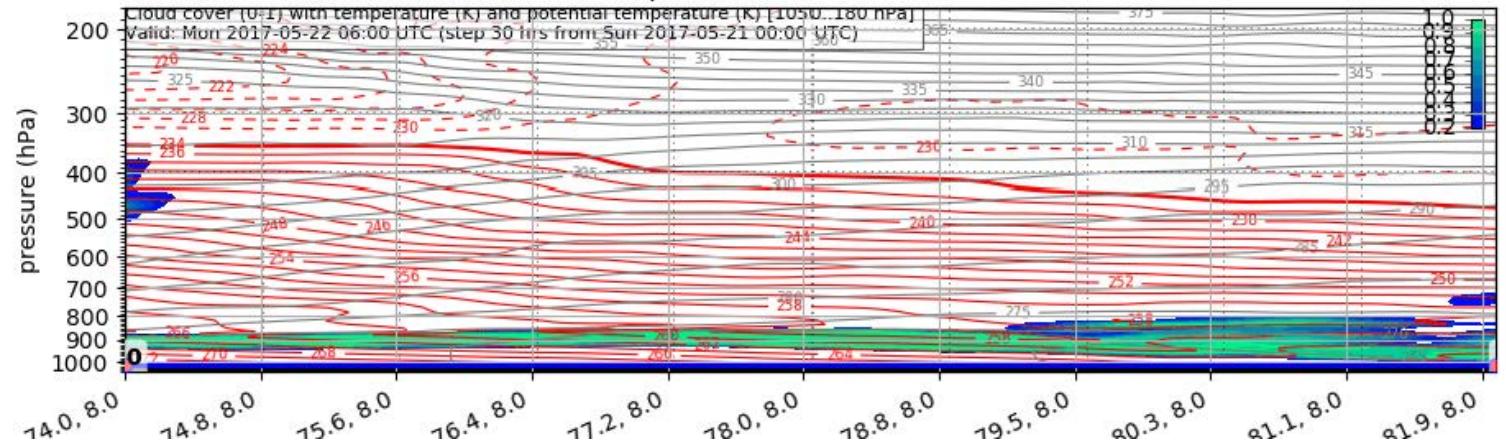
To change the map : click on the green buttons with a black

Forecast Tomorrow 06 UTC

Cloud Cover (0-1) (Total Cloud Cov
Valid: Mon 2017-05-22 06:00 UTC

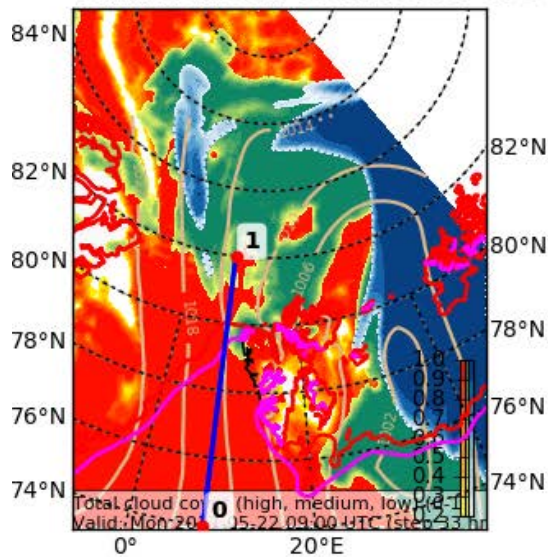


Valid: Mon 2017-05-22 06:00 UTC (step 30 hrs from Sun 2017-05-21 00:00 UTC)

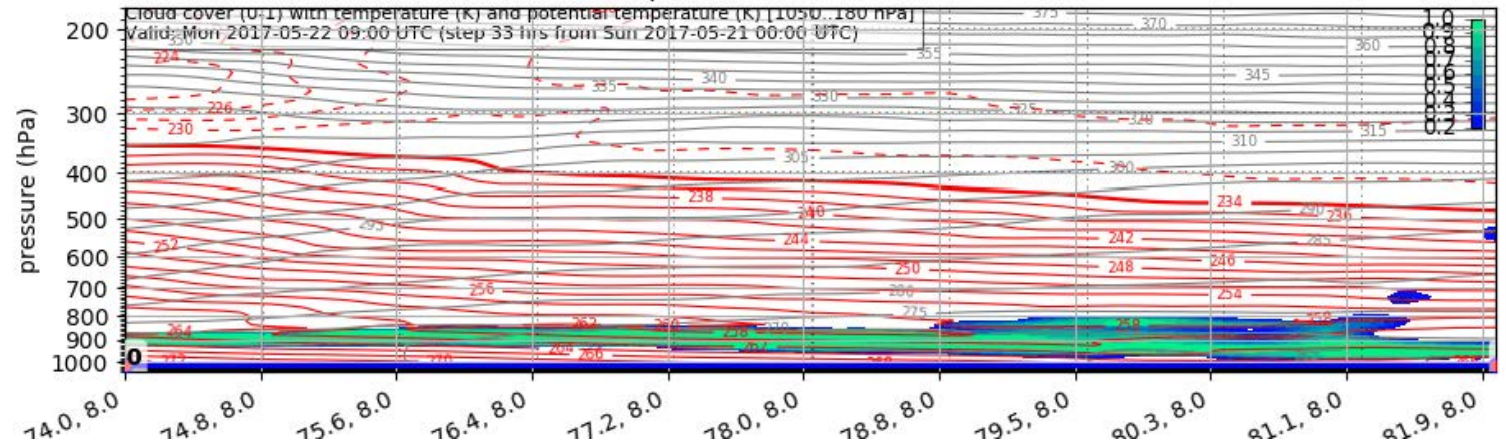


Forecast Tomorrow 09 UTC

Cloud Cover (0-1) (Total Cloud Cov
Valid: Mon 2017-05-22 09:00 UTC

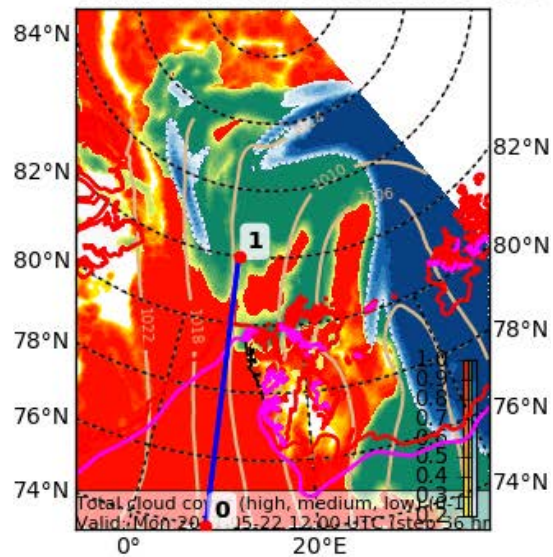


Valid: Mon 2017-05-22 09:00 UTC (step 33 hrs from Sun 2017-05-21 00:00 UTC)

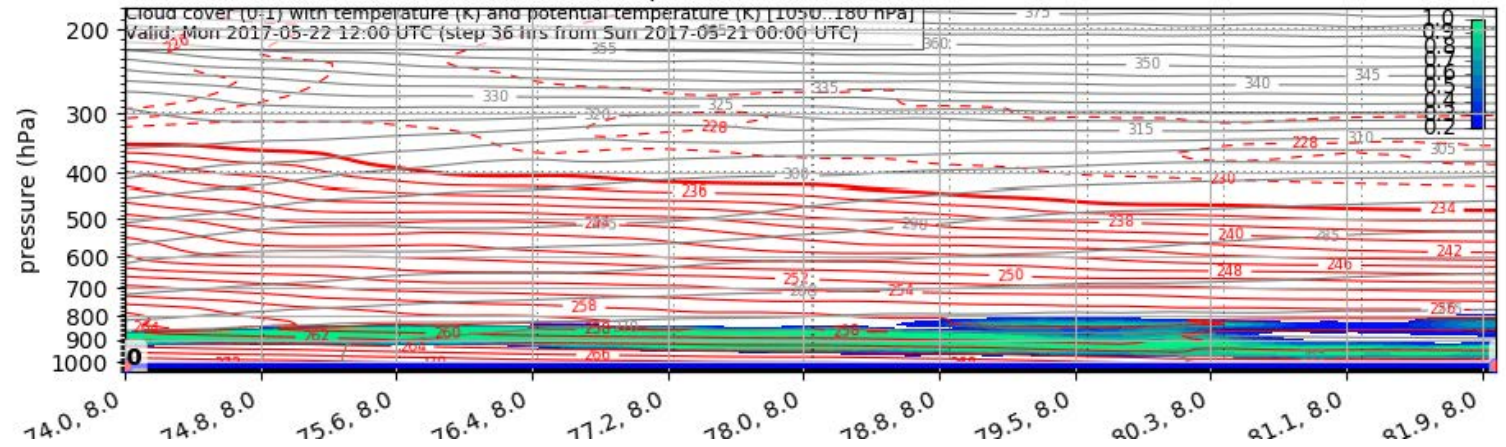


Forecast Tomorrow 12 UTC

Cloud Cover (0-1) (Total Cloud Cov
Valid: Mon 2017-05-22 12:00 UTC

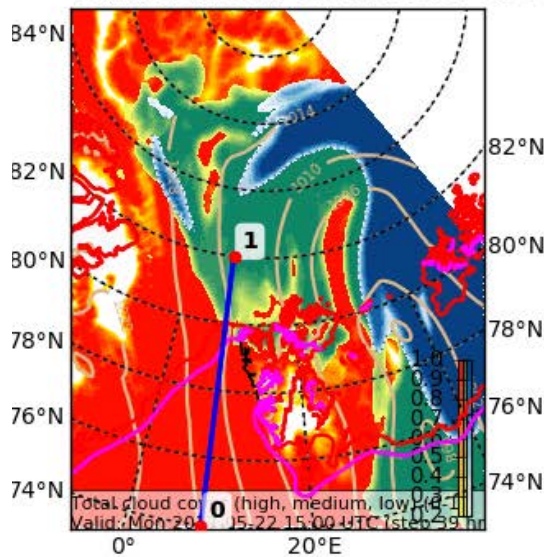


Valid: Mon 2017-05-22 12:00 UTC (step 36 hrs from Sun 2017-05-21 00:00 UTC)

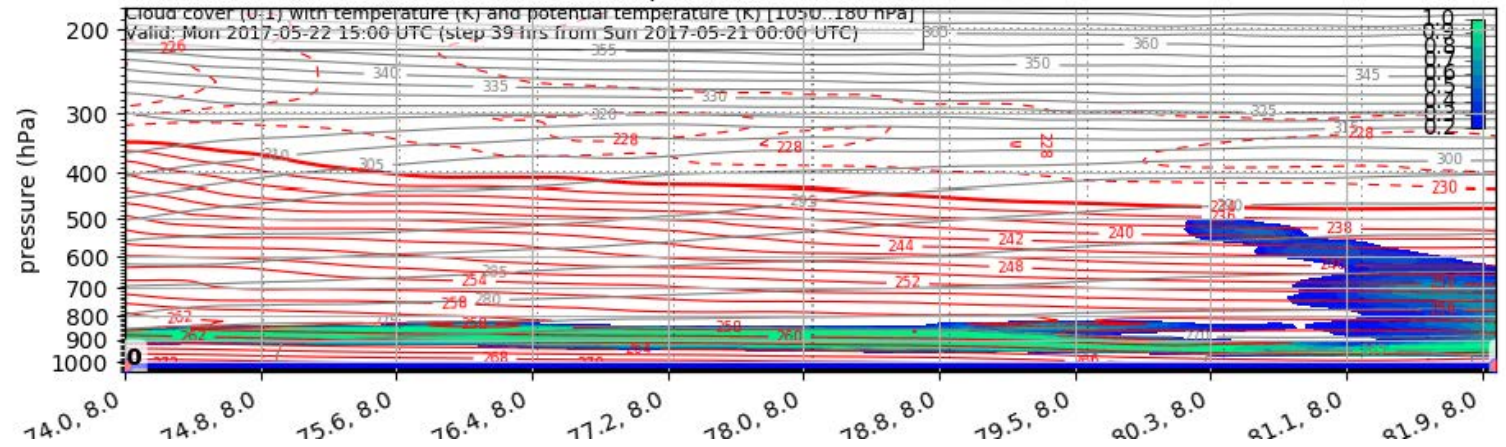


Forecast Tomorrow 15 UTC

Cloud Cover (0-1) (Total Cloud Cov
Valid: Mon 2017-05-22 15:00 UTC

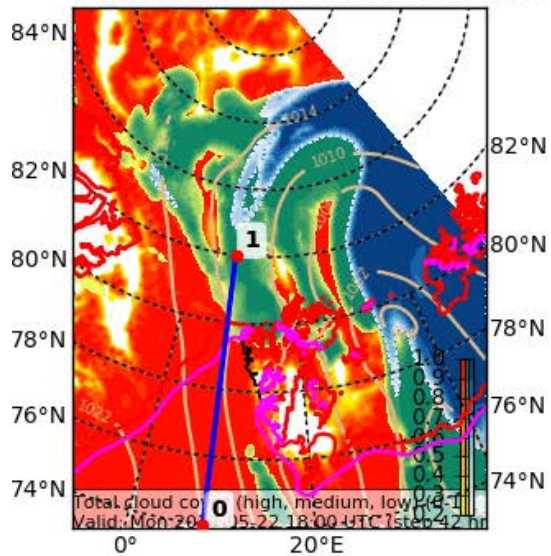


Valid: Mon 2017-05-22 15:00 UTC (step 39 hrs from Sun 2017-05-21 00:00 UTC)

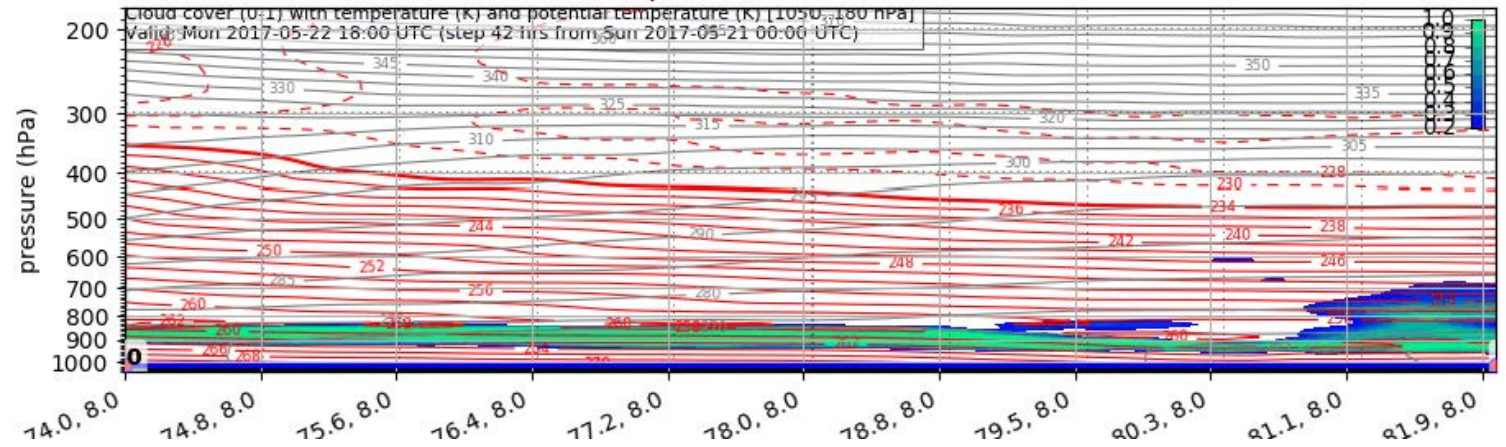


Forecast Tomorrow 18 UTC

Cloud Cover (0-1) (Total Cloud Cov
Valid: Mon 2017-05-22 18:00 UTC (



Valid: Mon 2017-05-22 18:00 UTC (step 42 hrs from Sun 2017-05-21 00:00 UTC)

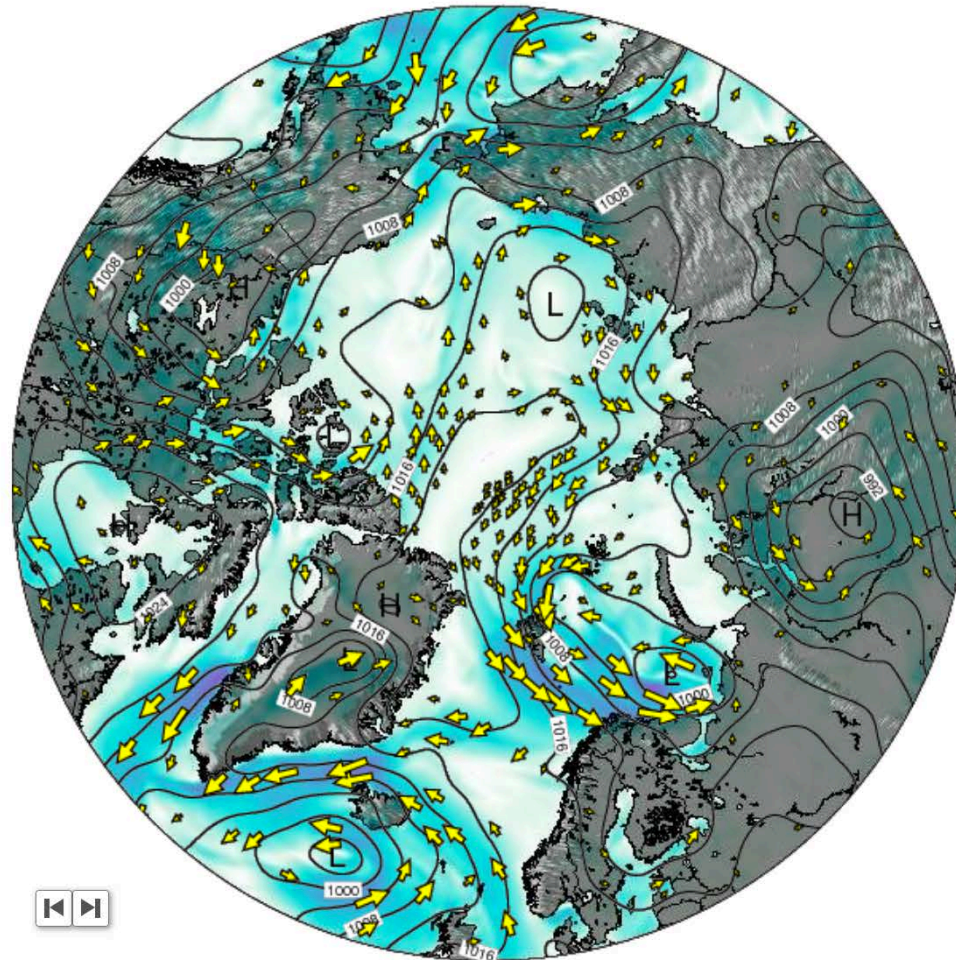


Outlook

Tue 23 May – Wed 24 May 2017

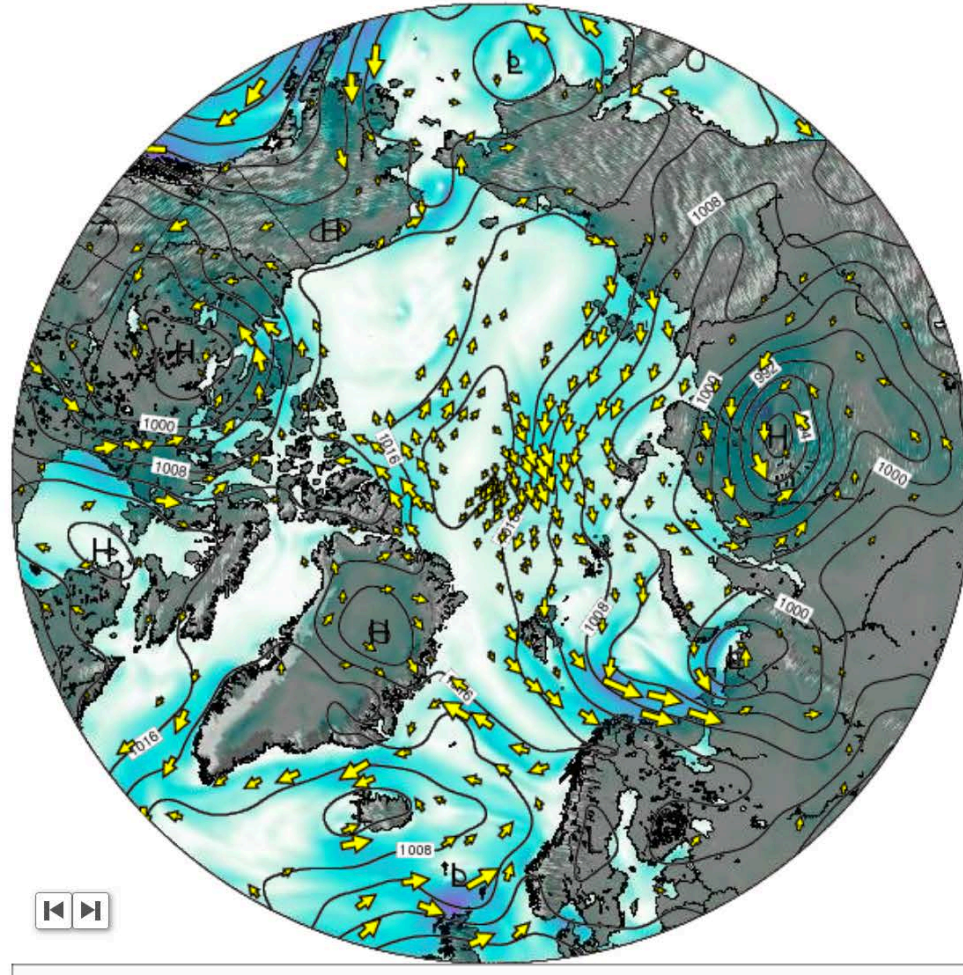
Outlook – General Weather Situation

Surface Wind on Tuesday 23 May at 12am UTC



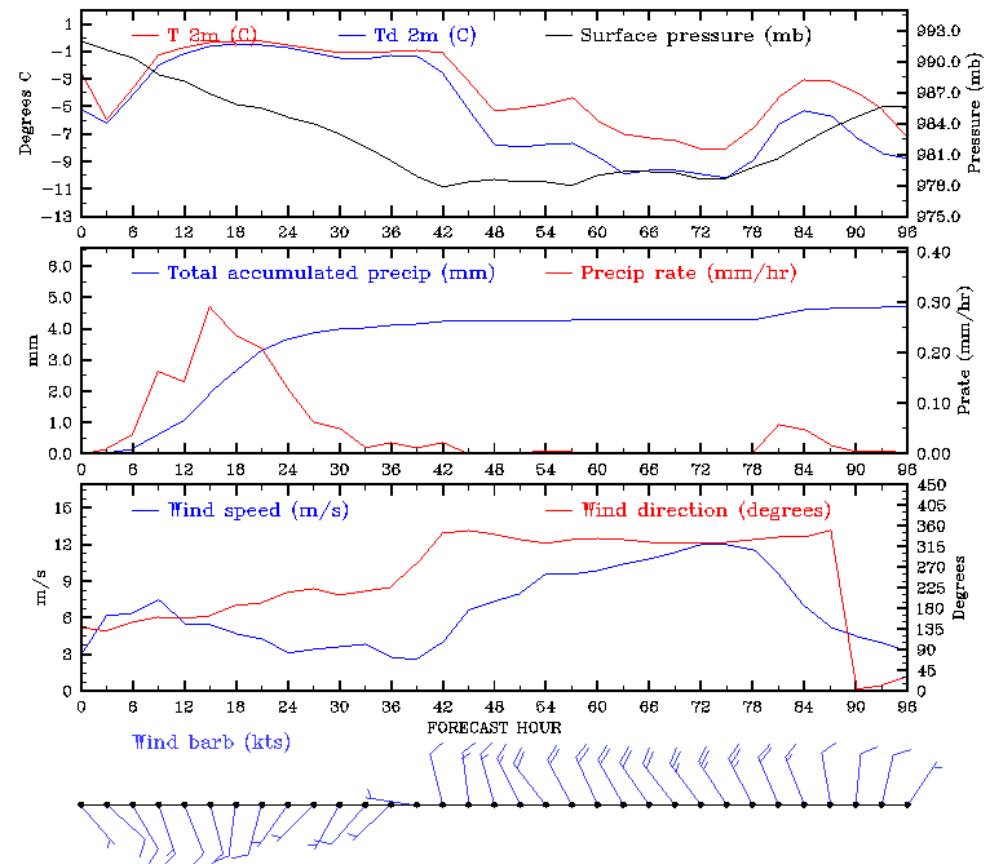
Outlook – General Weather Situation

Surface Wind on Wednesday 24 May at 12am UTC



Outlook – Meteogram

2017052000 UTC Time Series Forecast for Svalbard, NOR

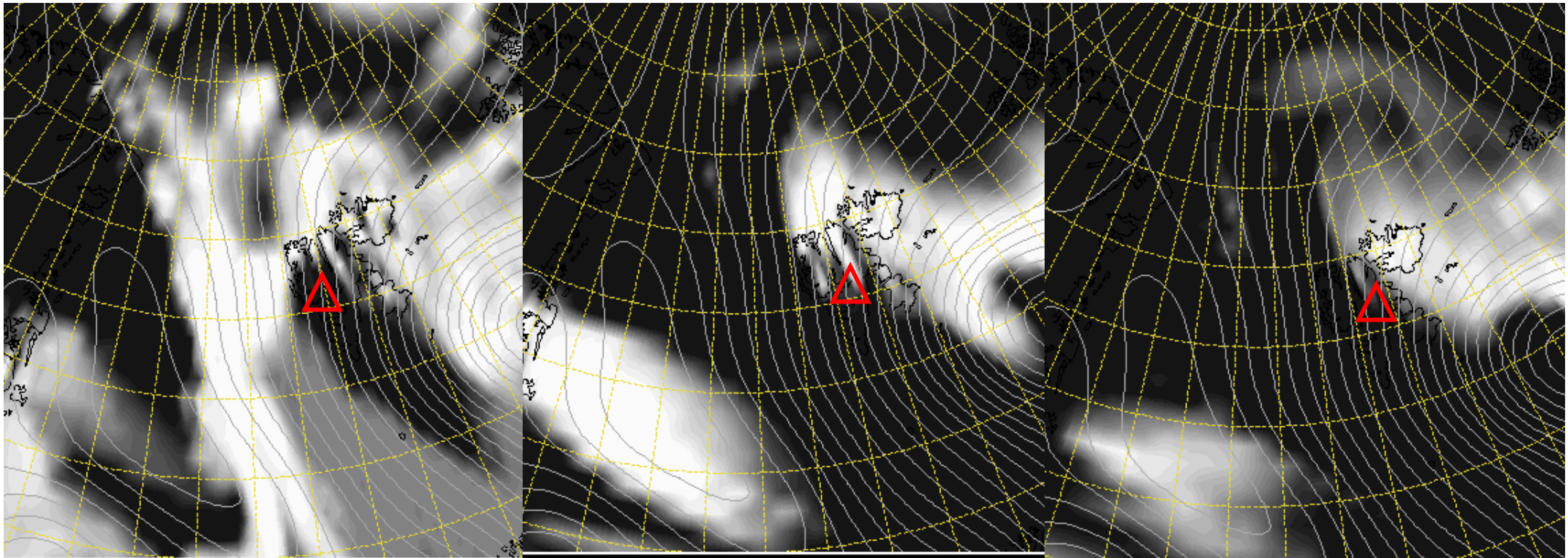


Cloud Cover 23 May 2017 @ 12 UTC

L

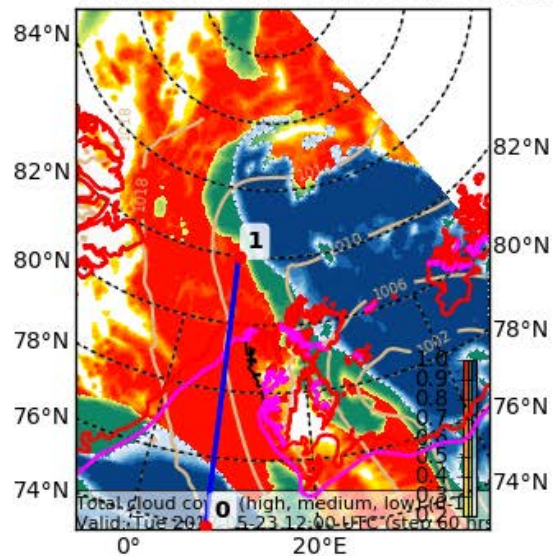
M

H

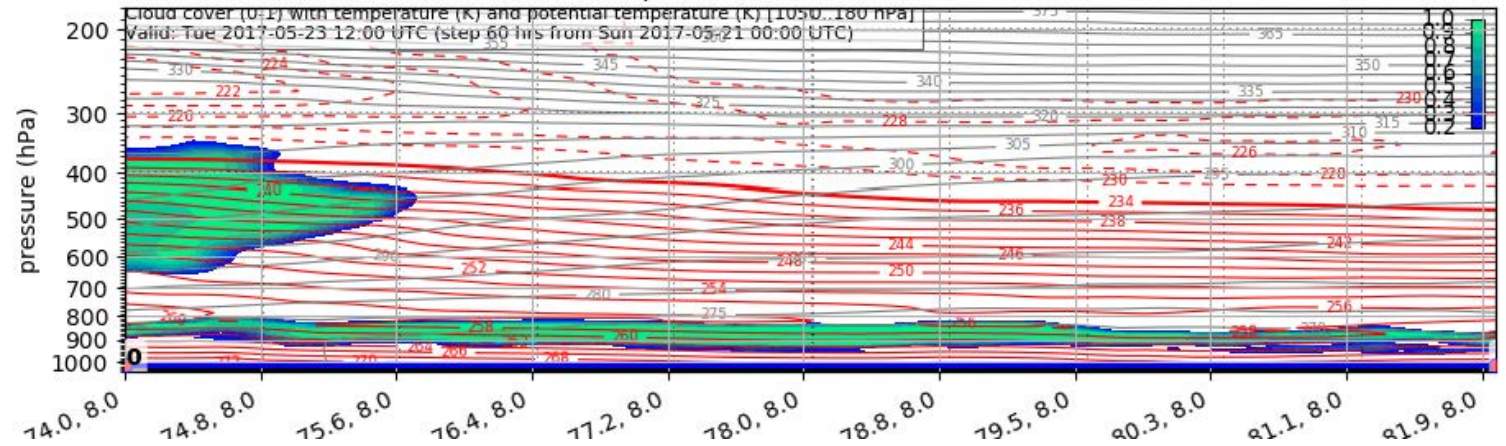


Forecast After Tomorrow 12 UTC

Cloud Cover (0-1) (Total Cloud Cover)
Valid: Tue 2017-05-23 12:00 UTC (step 60 hrs from Sun 2017-05-21 00:00 UTC)



Valid: Tue 2017-05-23 12:00 UTC (step 60 hrs from Sun 2017-05-21 00:00 UTC)



Precip. Water 21 May 2017

GFS 0.25°x0.25°
Daily Average

Precipitable Water
Saturday, May 20, 2017

